

V&V Reference Report

L2 ASCDS Version : 10.4.1

Observation 17690 - L2 Version 1
Chandra X-Ray Center

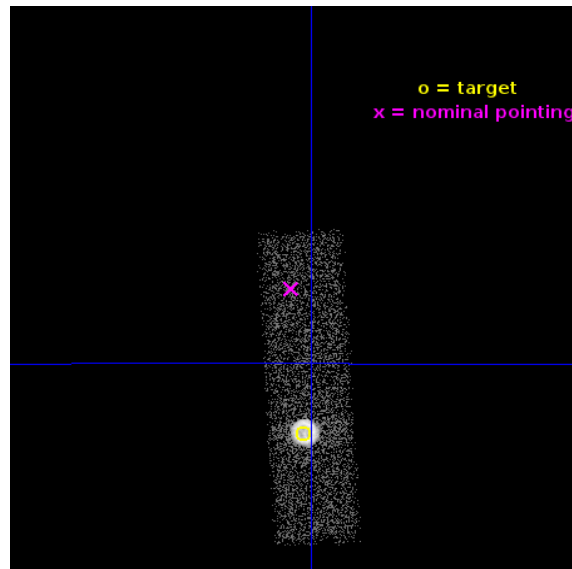
L2 Processing Date : Jul 18 2015

Contents

1	Front	2
2	OBI	3
2.1	OBI	3
2.1.1	Images	3
2.1.2	Bias	3
2.1.3	Parameters	4
2.1.4	Events	4
2.2	Compared Parameters	5
2.3	Aspect	6
2.4	Star Slots	9
2.4.1	Slot 3	9
2.4.2	Slot 4	10
2.4.3	Slot 5	11
2.4.4	Slot 6	12
2.4.5	Slot 7	13
2.5	FID Slots	14
2.5.1	Slot 0	14
2.5.2	Slot 1	15
2.5.3	Slot 2	16
A	Summary	17
A.1	Status	17
A.2	Comments	17

1 Front

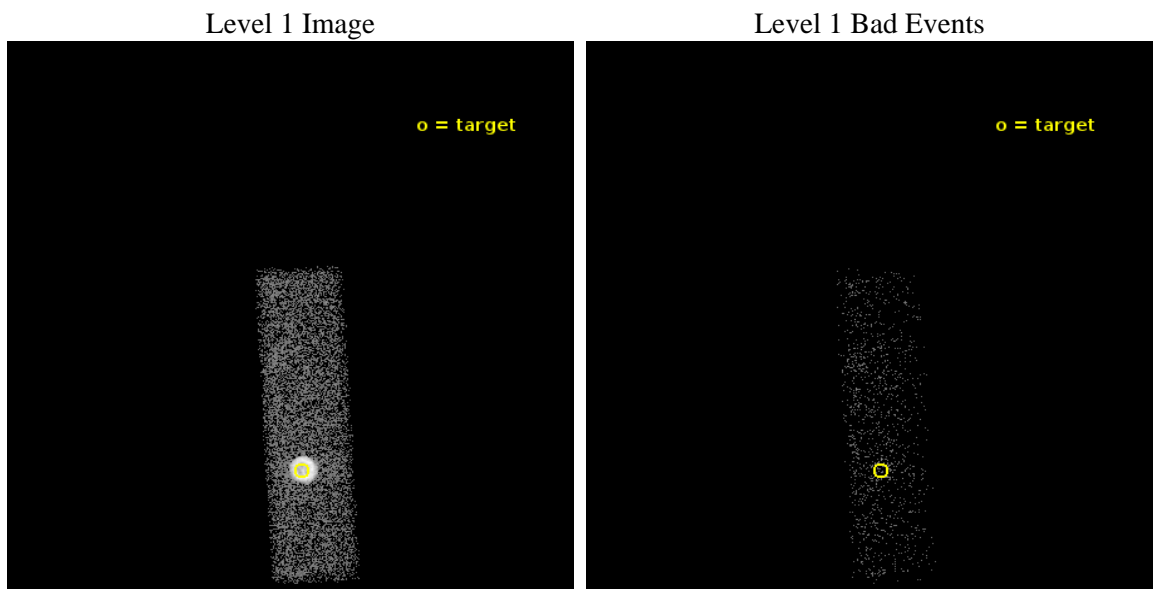
seq_num	590545	Sequence number
obs_id	17690	Observation id
title	Measuring the Spatial Distribution of the ACIS contaminant with E0102-72	Proposal title
observer	Dr. CXC Calibration	Principal investigator
object	E0102-72	Source name
dtcycle	0	
cycle	P	events from which exps? Prim/Second/Both
ra_targ	16.01	Observer's specified target RA [deg]
dec_targ	-72.032028	Observer's specified target Dec [deg]
ra_nom	16.027689780485	Nominal RA [deg]
dec_nom	-71.96623765719	Nominal Dec [deg]
roll_nom	86.768630592451	Nominal Roll [deg]
revision	1	Processing version of data
ontime	10063.199400187	Sum of GTIs [s]
livetime	9572.1481976473	Livetime [s]
ontime7	10063.199400187	Sum of GTIs [s]
l2events	28565	Number of level 2 events



2 OBI

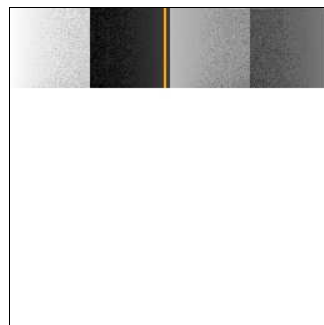
2.1 OBI

2.1.1 Images



2.1.2 Bias

Chip 7



2.1.3 Parameters

obi_num	0	Obi number	sched_exp_time	10000.000000	[s] Scheduled observation exposure time
ascdsver	10.4.1	Processing system revision	ontime	10063.199400187	Sum of GTIs [s]
caldsver	4.6.8	 	ontime7	10063.199400187	Sum of GTIs [s]
date	2015-07-18T19:32:09	Date and time of file creation	l1events	36282	Number of level 1 events
revision	1	Processing version of data			

2.1.4 Events

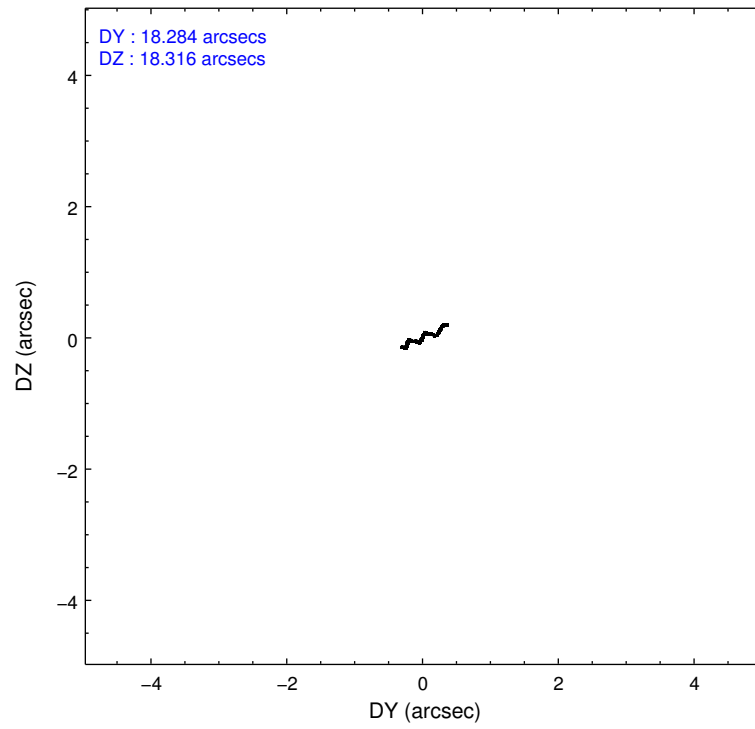
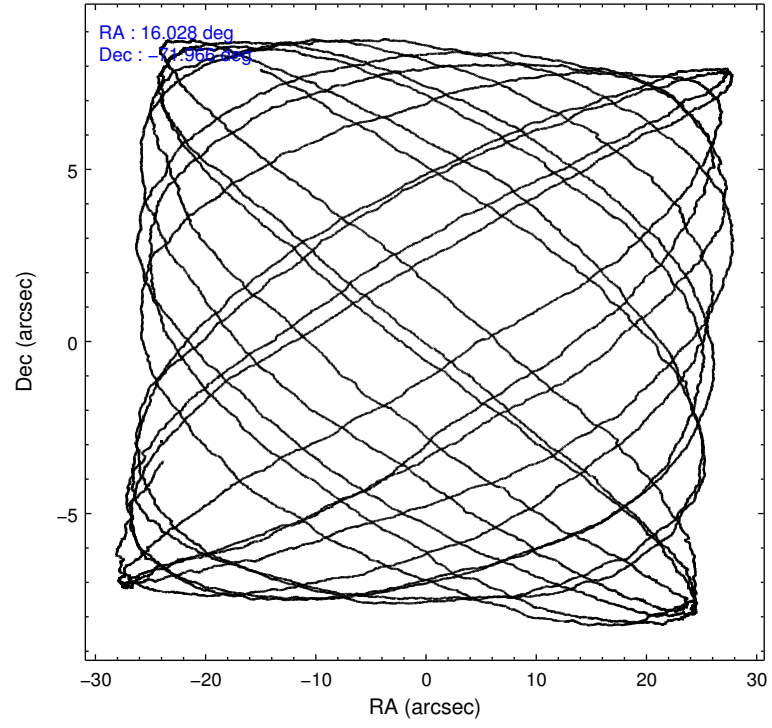
	ccd 7
level 1 events	36282
rejected events	7425
rejected %	20%

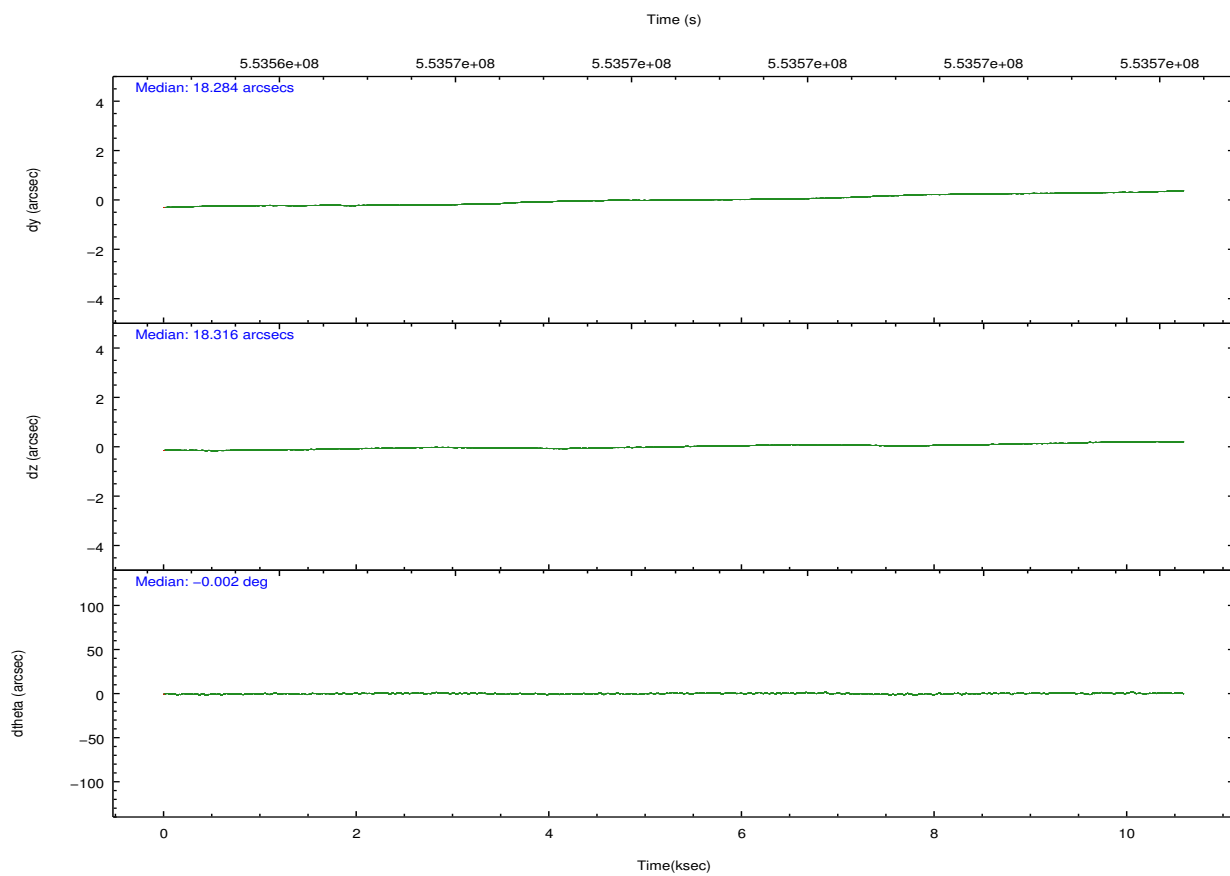
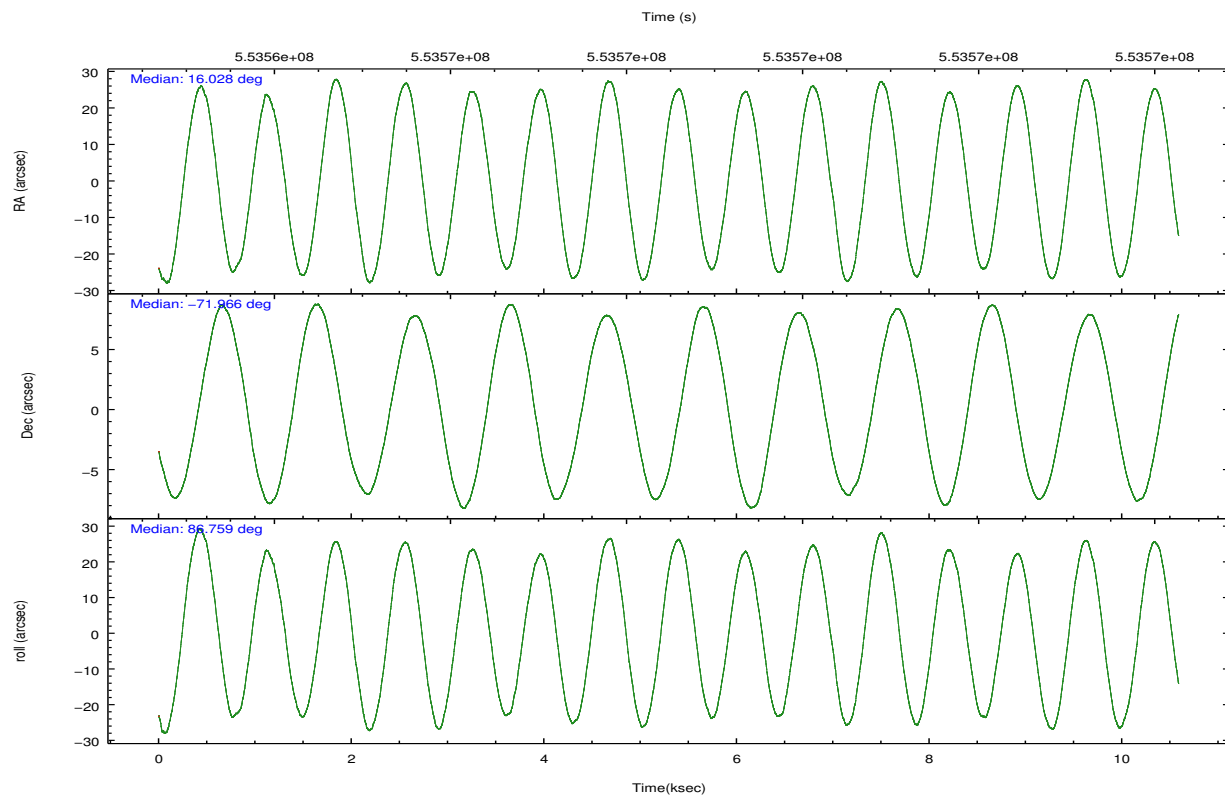
	ccd 7
grade 0 events	8283
	22%
grade 1 events	40
	0%
grade 2 events	7532
	20%
grade 3 events	3377
	9%
grade 4 events	3358
	9%
grade 5 events	1846
	5%
grade 6 events	6309
	17%
grade 7 events	5537
	15%

2.2 Compared Parameters

Parameter	Planned	Actual	Parameter	Planned	Actual
Instrument	ACIS	ACIS	Obspar format version number	7	7
Detector	ACIS-7	ACIS-7	Obspar file type	PREDICTED	ACTUAL
Grating	NONE	NONE	Obspar update status	NONE	UPDATED
Data mode	VFAINT	VFAINT	Number of optional ACIS chips dropped	0	0
Observation mode	POINTING	POINTING	On-chip summing requested	N	N
[deg] Pointing RA	16.068745	16.02768978048486	Subarray requested	CUSTOM	1/4
[deg] Pointing Dec	-71.990547	-71.96623765719039	Subarray start row	769	769
[deg] Pointing Roll	86.651045	86.76863059245059	Subarray row count	256	256
[mm] SIM focus pos	-0.684267	-0.6828225247311905	Alternating exposures requested	N	N
[mm] SIM defocus	0	0.001444936568705701	[s] Primary exposure time	0.000000	0.8
[mm] SIM translation stage pos	-200.662523	-200.6599612715989			
[mm] SIM translation stage offset	10.53	10.5274386885911			
[s] Observation start time (MET)	553563793.184000	553563011.41021			
Observation start date	2015-07-17T23:42:05	2015-07-17T23:30:11			
[s] Observation end time (MET)	553573793.184000	553573926.63582			
Observation end date	2015-07-18T02:28:45	2015-07-18T02:32:06			
Read mode	TIMED	TIMED			

2.3 Aspect



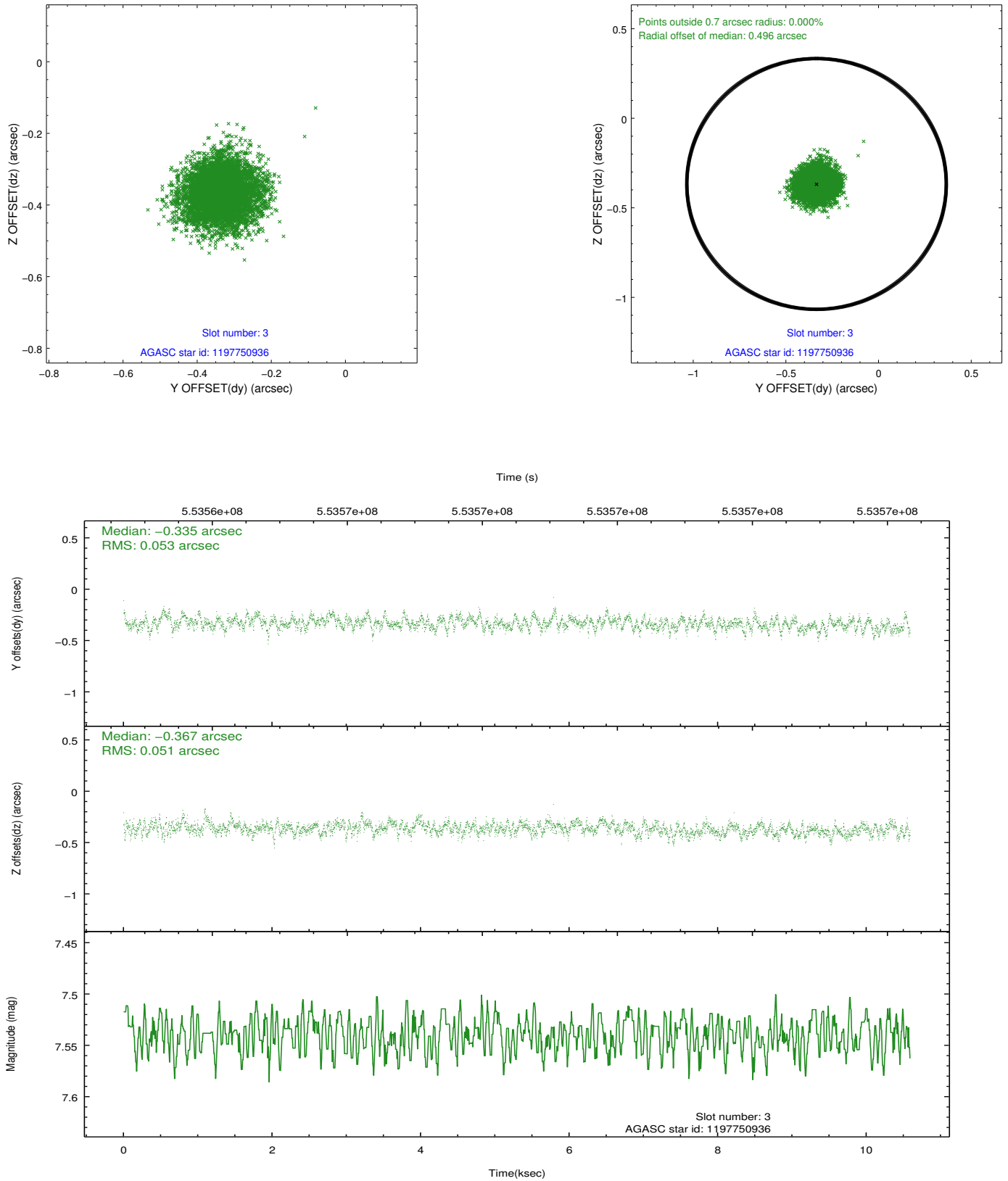


Slot Statistics

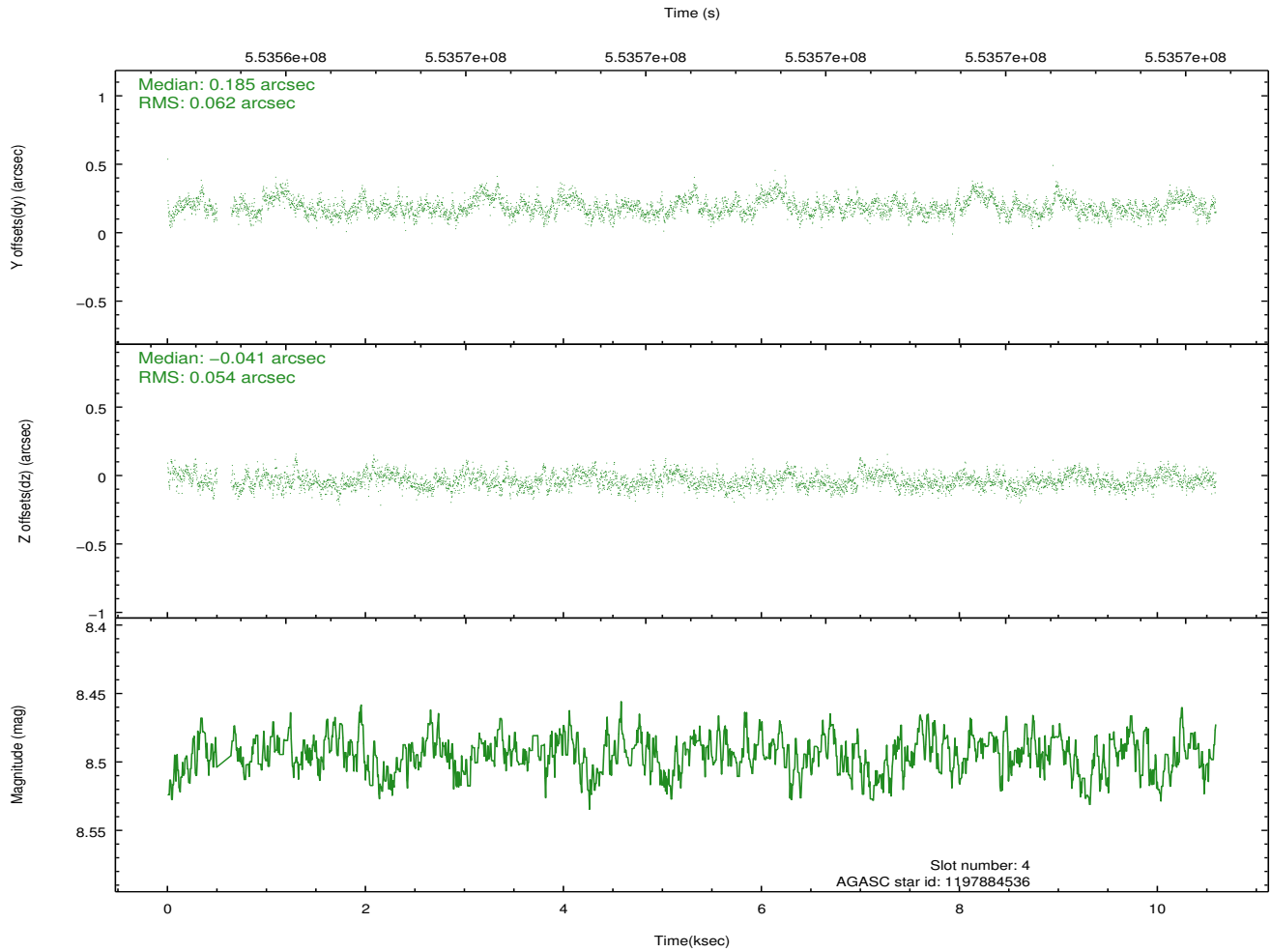
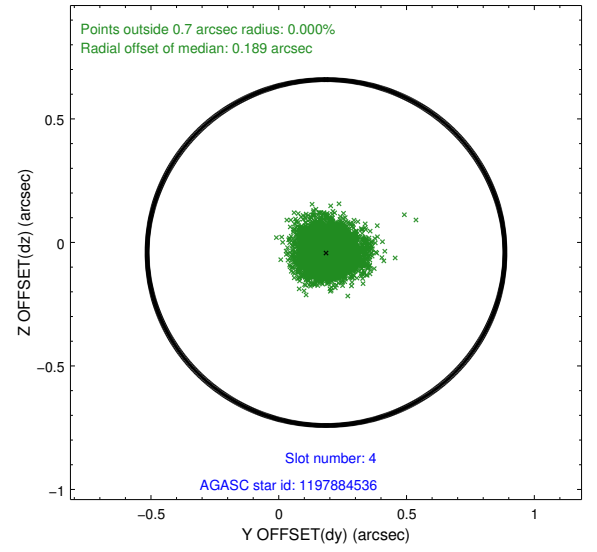
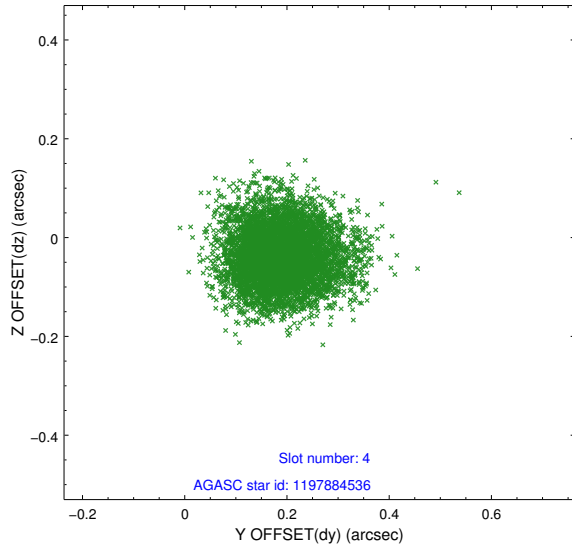
slot	status	used	id	mag	n_pts	med_dy	med_dz	dr1	dr2	ra	dec	mean_y	mean_z
0	FID		ACIS-S-2	7.08	2583	-0.052	0.128	0.014	0.021	0.000000	0.000000	-772.08	-1522.61
1	FID		ACIS-S-4	7.13	2582	0.333	-0.008	0.006	0.010	0.000000	0.000000	2141.42	385.23
2	FID		ACIS-S-5	7.14	2583	-0.313	-0.109	0.014	0.025	0.000000	0.000000	-1824.49	379.48
3	GUIDE	used	1197750936	7.54	5166	-0.335	-0.367	0.079	0.126	15.387940	-71.549550	1534.43	866.74
4	GUIDE	used	1197884536	8.49	5094	0.185	-0.041	0.088	0.144	17.160729	-71.835289	619.61	-1190.93
5	GUIDE	used	1197885104	9.34	5159	0.276	0.182	0.132	0.216	17.845067	-72.189368	-629.08	-1995.22
6	GUIDE	used	1197885328	7.24	5165	-0.185	0.031	0.080	0.128	16.283090	-71.733943	936.79	-189.03
7	GUIDE	used	1198283128	7.89	5165	0.064	0.188	0.069	0.110	17.272580	-72.642428	-2279.37	-1428.53

2.4 Star Slots

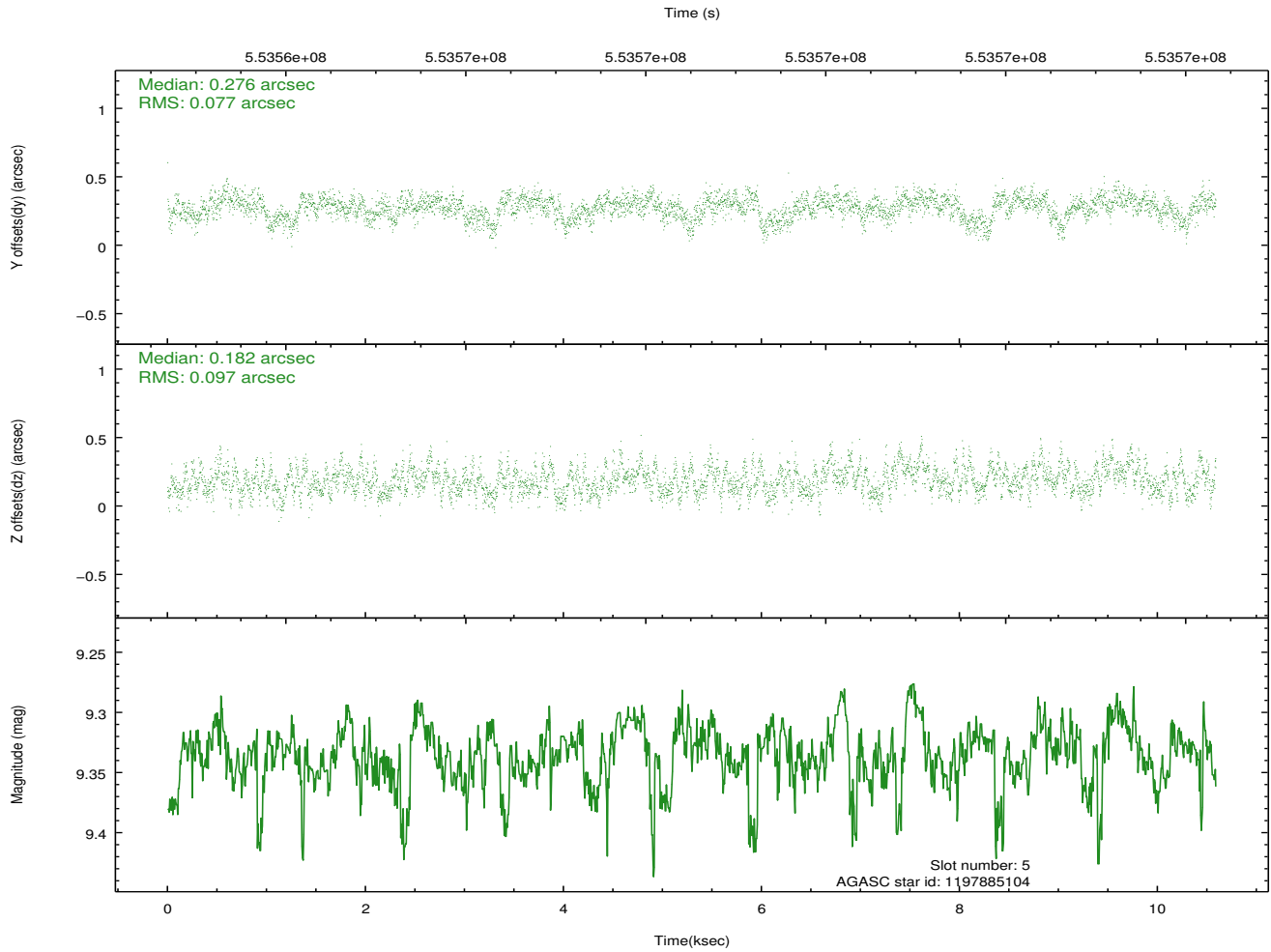
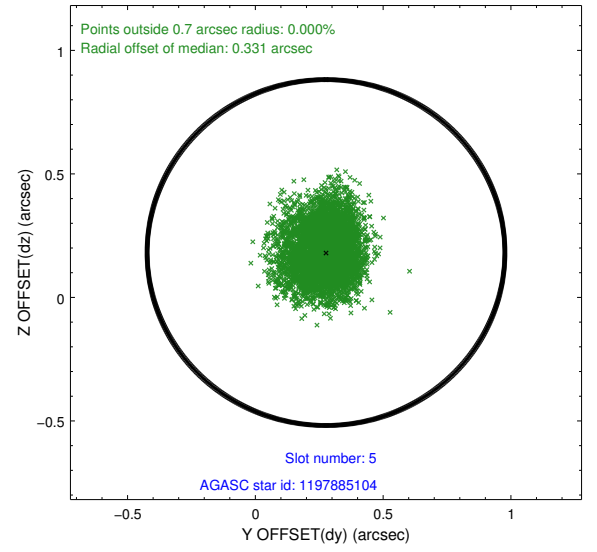
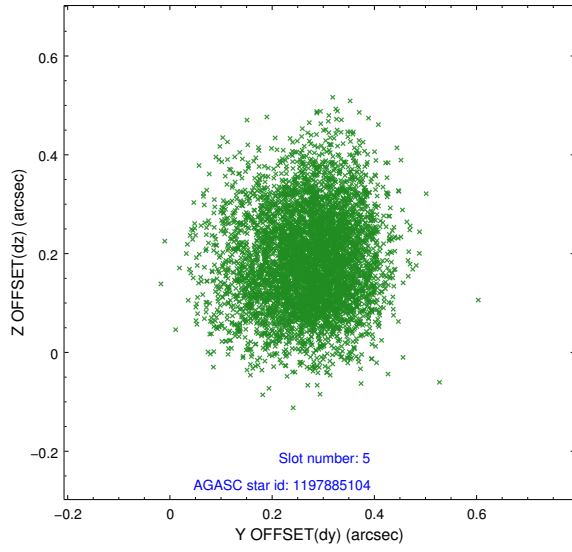
2.4.1 Slot 3



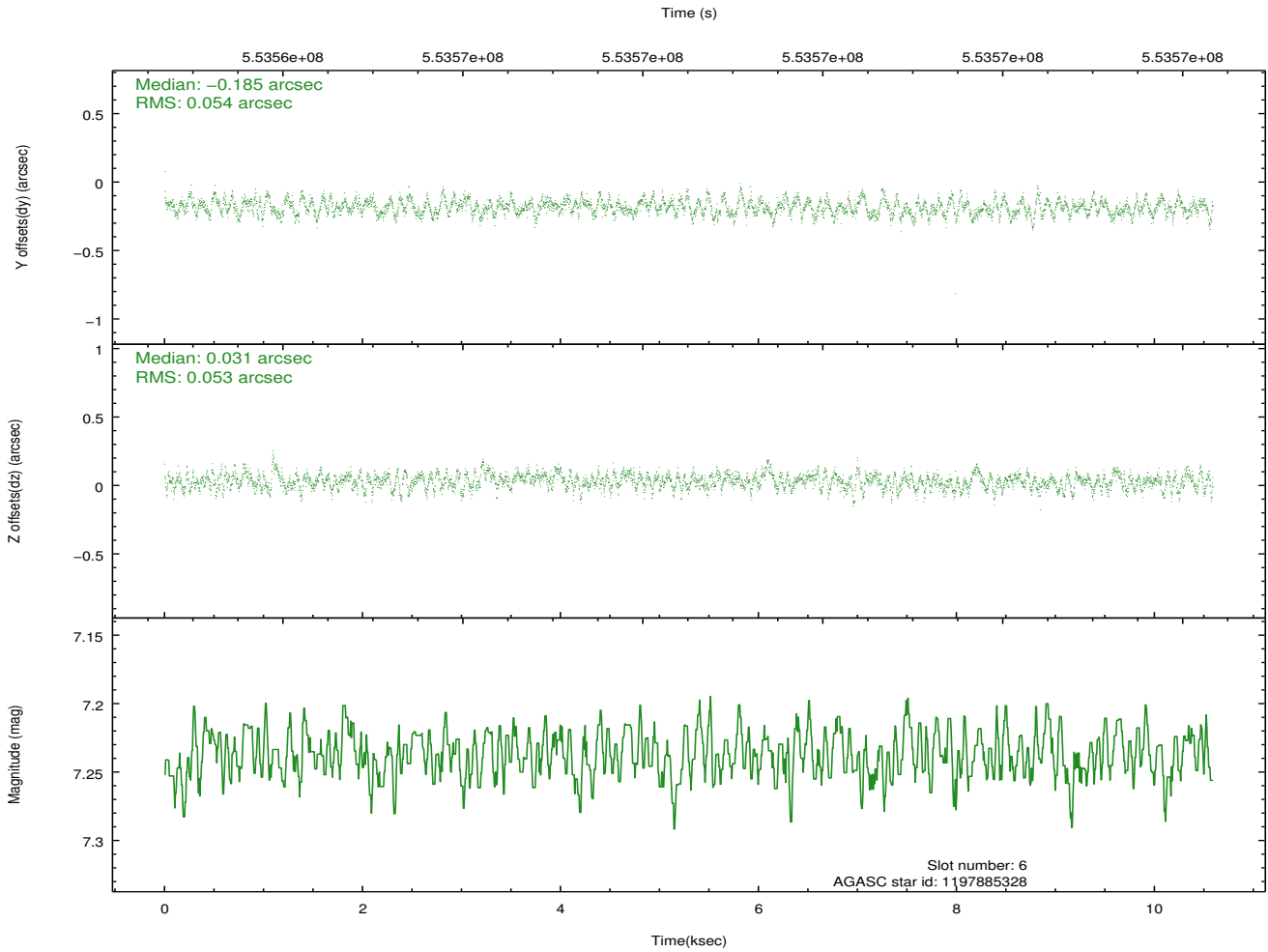
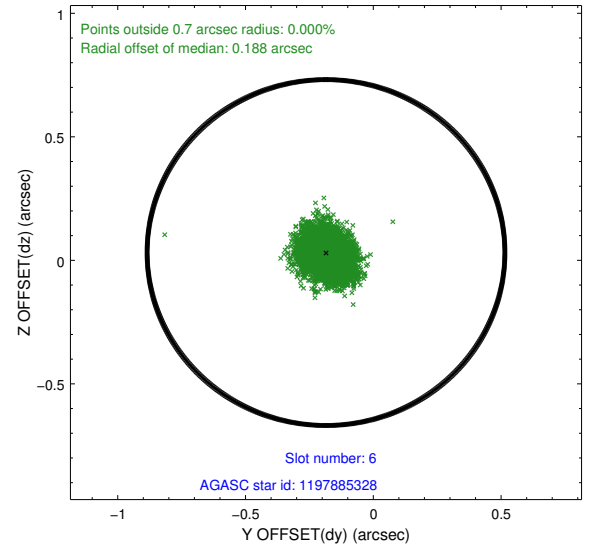
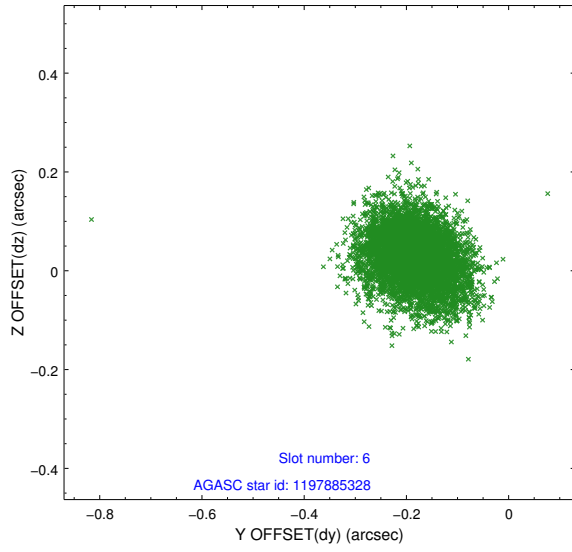
2.4.2 Slot 4



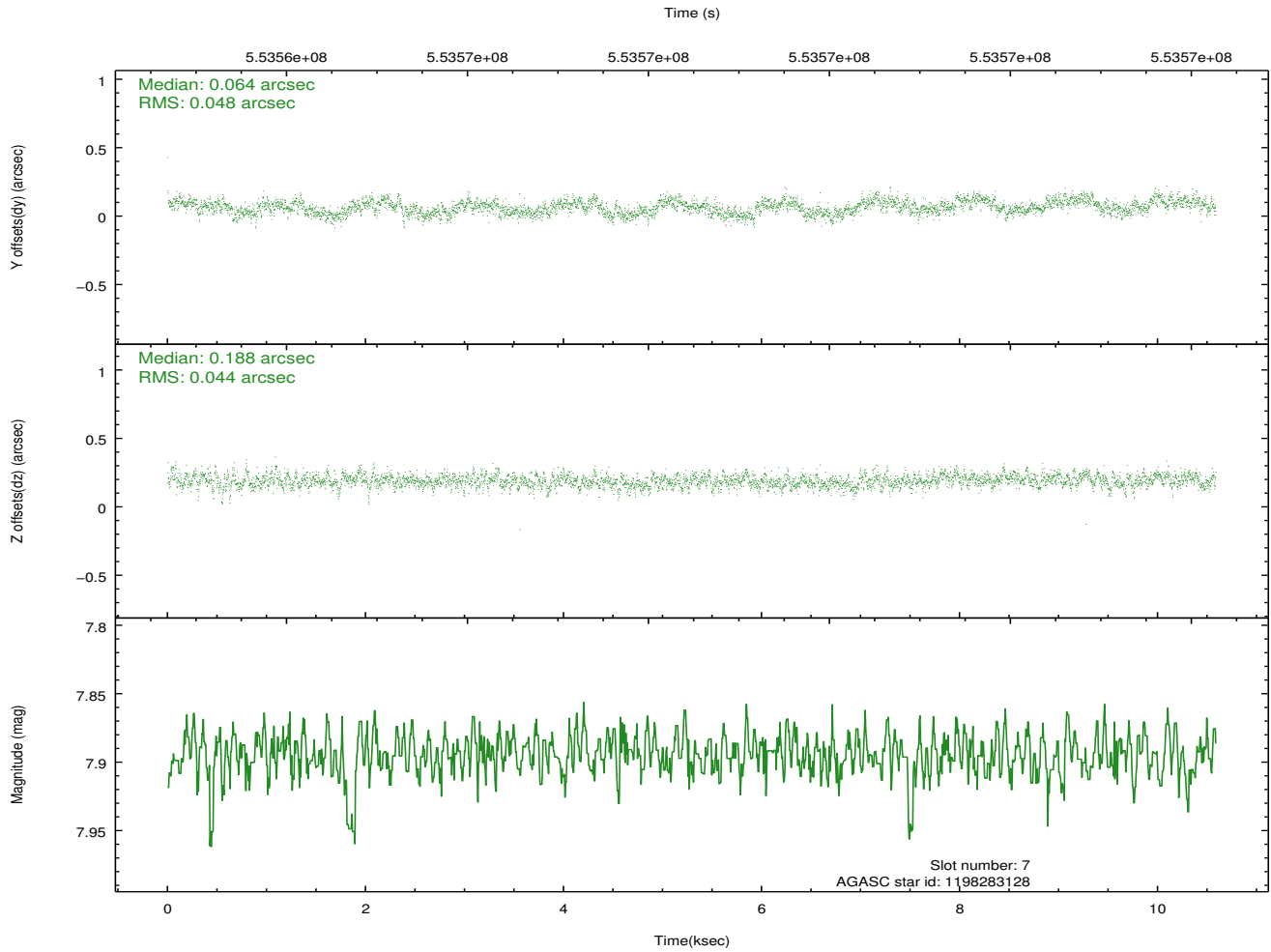
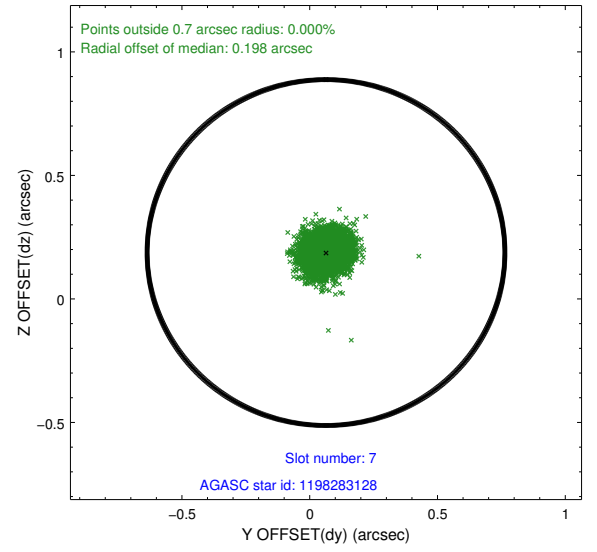
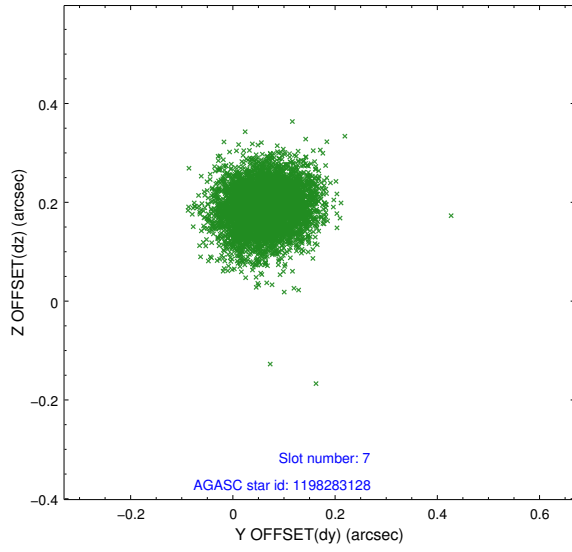
2.4.3 Slot 5



2.4.4 Slot 6

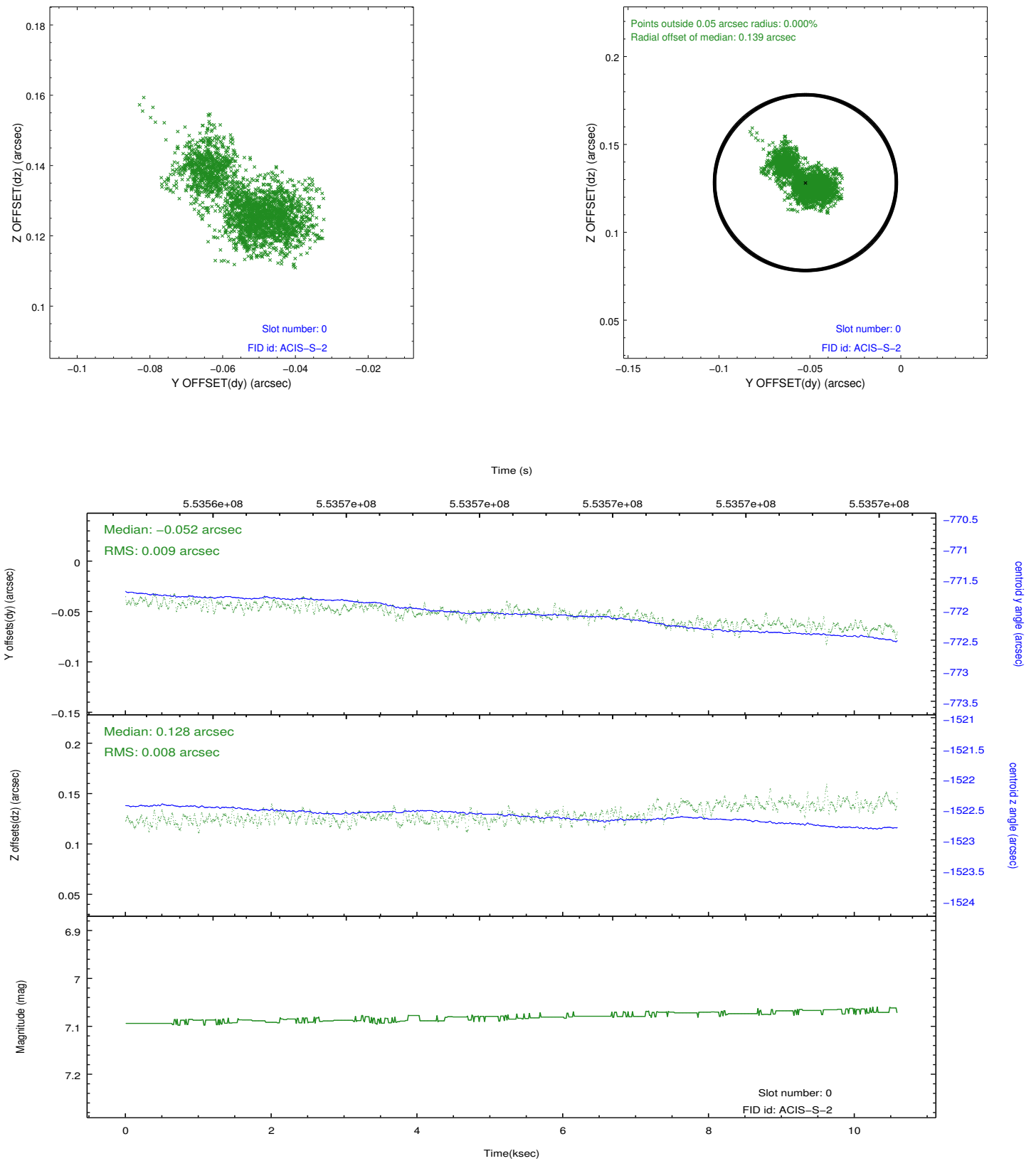


2.4.5 Slot 7

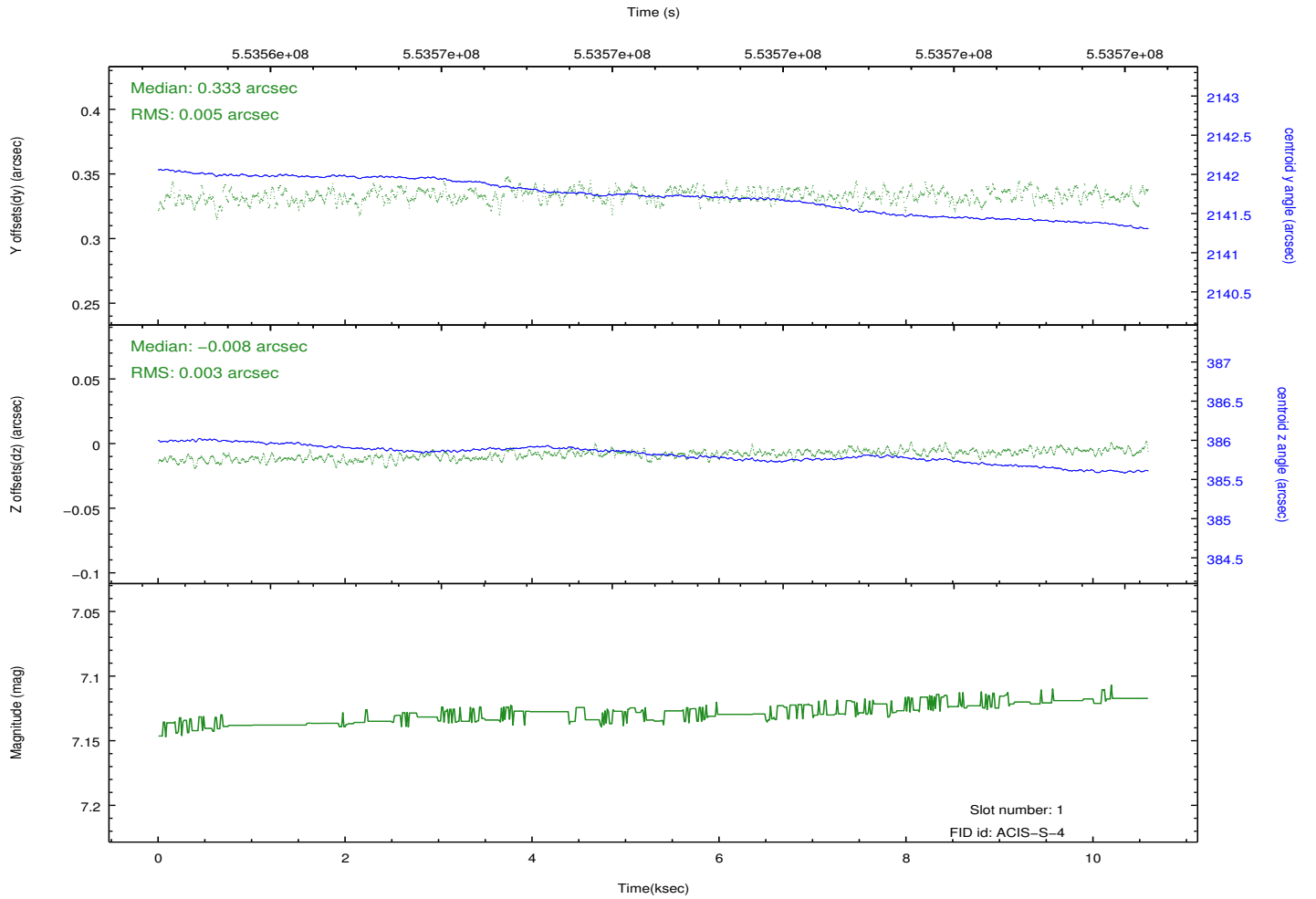
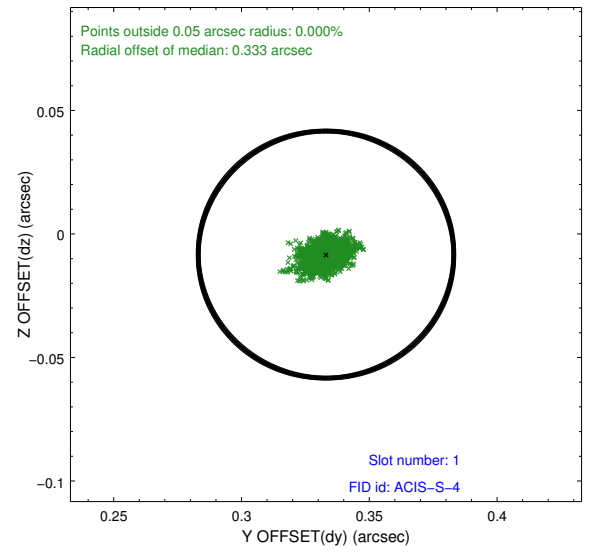
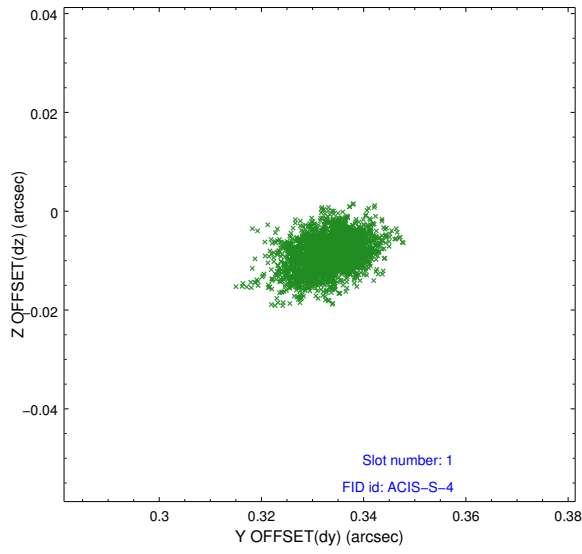


2.5 FID Slots

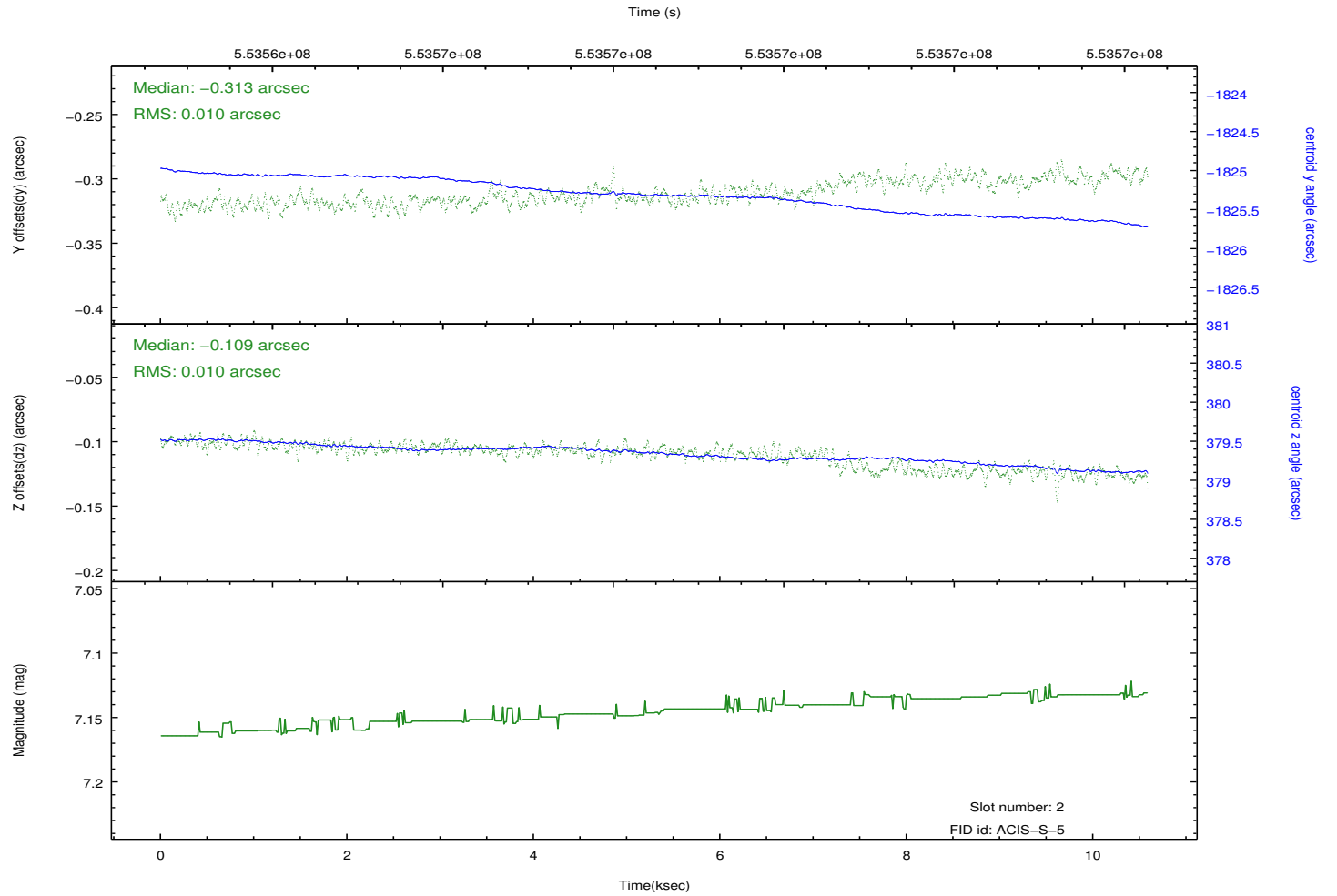
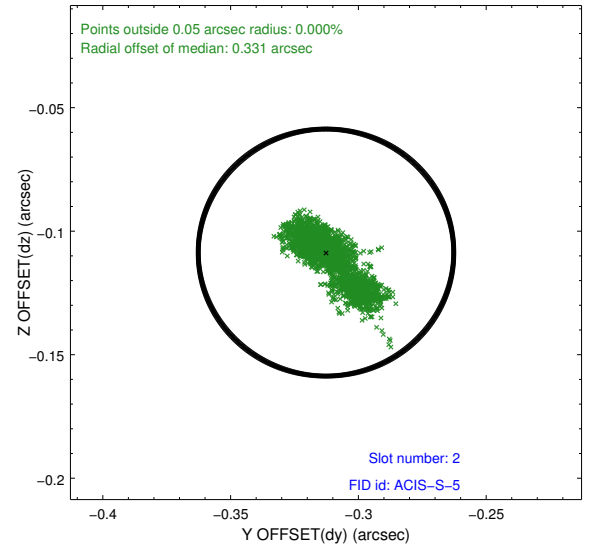
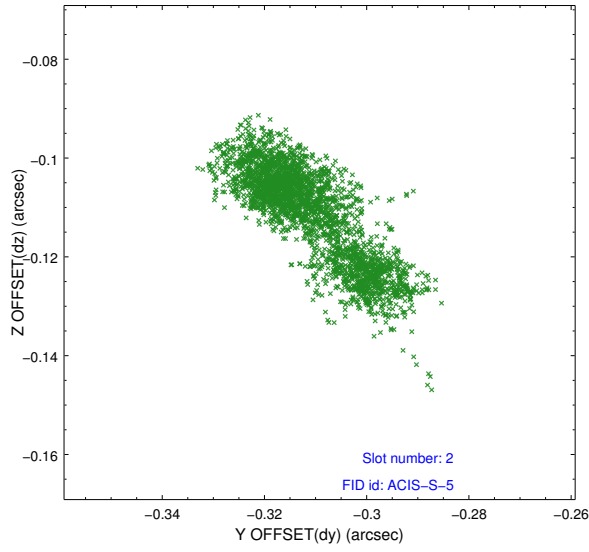
2.5.1 Slot 0



2.5.2 Slot 1



2.5.3 Slot 2



A Summary

A.1 Status

V&V Scientist	Beth Sundheim
V&V Date (YYYY-MM-DD)	2015.07.19
V&V Edition	1
V&V Disposition and Status	OK
V&V Charge Time	10.063199400187

A.2 Comments