

V&V Reference Report

L2 ASCDS Version : 8.5.1.1

Observation 15485 - L2 Version 2
Chandra X-Ray Center

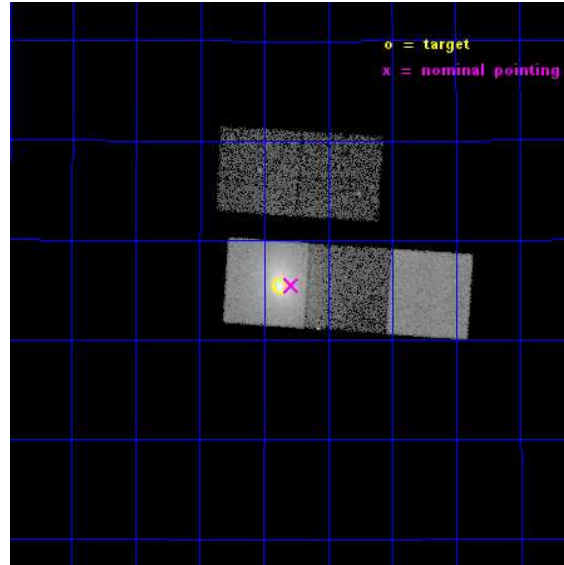
L2 Processing Date : Dec 2 2014

Contents

1	Front	2
2	OBI	3
2.1	OBI	3
2.1.1	Images	3
2.1.2	Bias	3
2.1.3	Parameters	4
2.1.4	Events	4
2.2	Compared Parameters	5
2.3	Aspect	6
2.4	Star Slots	9
2.4.1	Slot 3	9
2.4.2	Slot 4	10
2.4.3	Slot 5	11
2.4.4	Slot 6	12
2.4.5	Slot 7	13
2.5	FID Slots	14
2.5.1	Slot 0	14
2.5.2	Slot 1	15
2.5.3	Slot 2	16
A	Summary	17
A.1	Status	17
A.2	Comments	17

1 Front

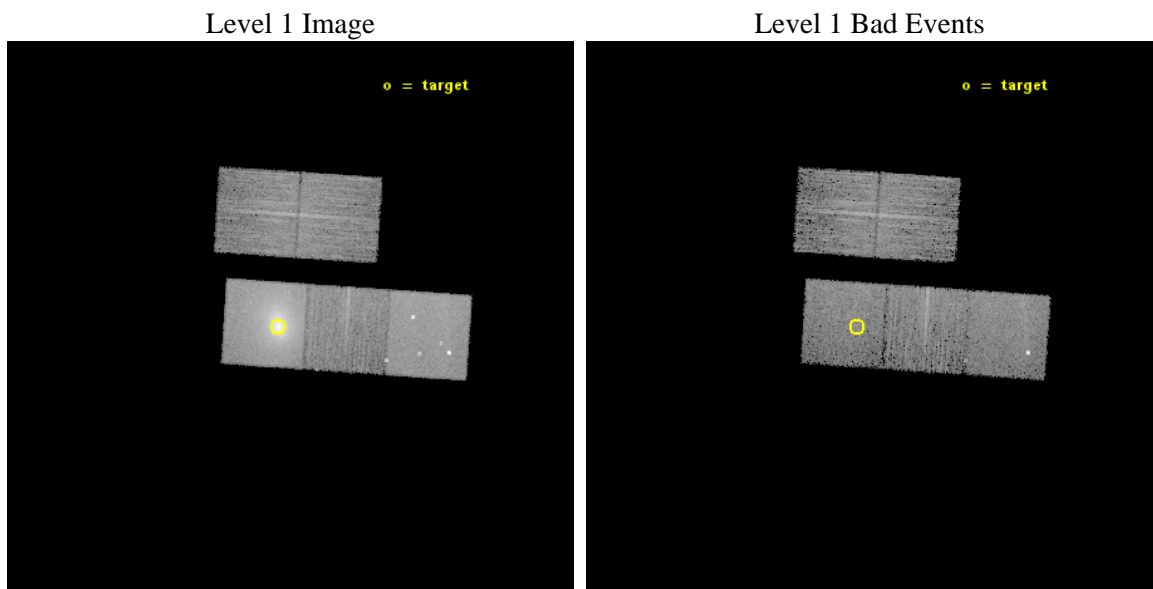
seq_num	890071	Sequence number
obs_id	15485	Observation id
title	AO-14 Calibration Observations of A1795	Proposal title
observer	Dr. CXC Calibration	Principal investigator
object	A1795	Source name
dtcycle	0	
cycle	P	events from which exps? Prim/Second/Both
ra_targ	207.219583	Observer's specified target RA [deg]
dec_targ	26.590833	Observer's specified target Dec [deg]
ra_nom	207.19630991757	Nominal RA [deg]
dec_nom	26.591161270597	Nominal Dec [deg]
roll_nom	183.78571502848	Nominal Roll [deg]
revision	2	Processing version of data
ontime	10067.595177293	Sum of GTIs [s]
livetime	9936.0546346457	Livetime [s]
ontime2	10067.43101728	Sum of GTIs [s]
ontime3	10061.190076292	Sum of GTIs [s]
ontime5	10067.55413729	Sum of GTIs [s]
ontime6	10067.513097286	Sum of GTIs [s]
ontime7	10067.595177293	Sum of GTIs [s]
l2events	190938	Number of level 2 events



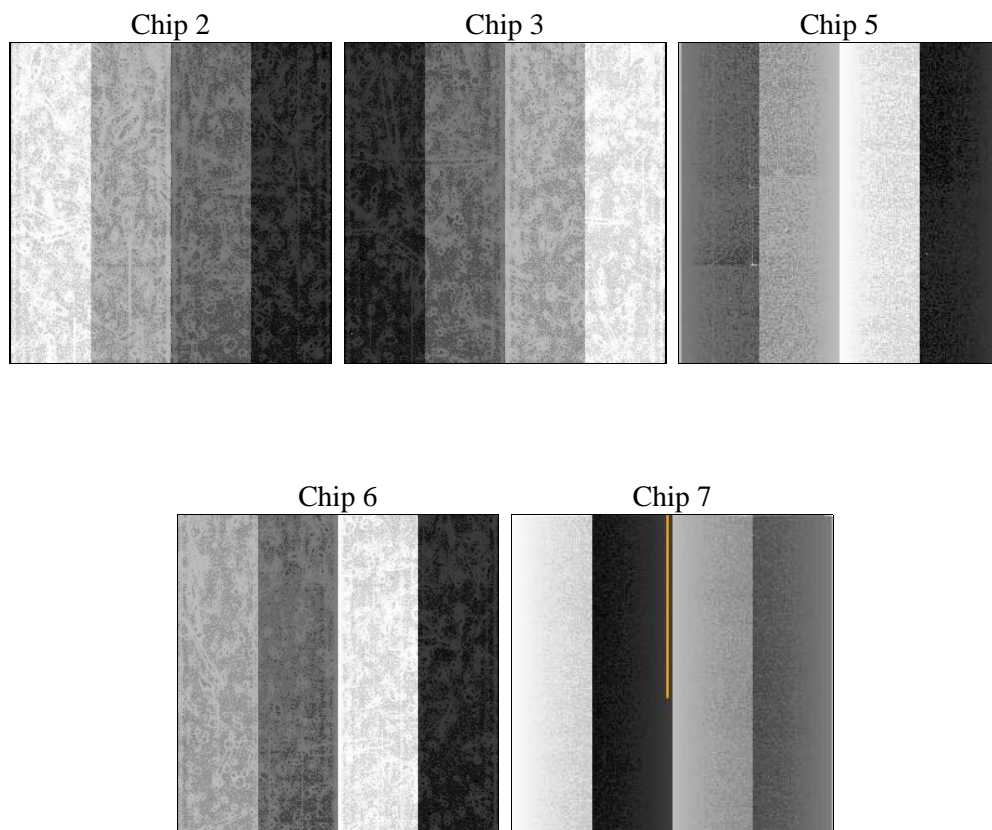
2 OBI

2.1 OBI

2.1.1 Images



2.1.2 Bias



2.1.3 Parameters

obi_num	0	Obi number	sched_exp_time	10000.000000	[s] Scheduled observation exposure time
ascdsver	10.3	Processing system revision	ontime	10067.595177293	Sum of GTIs [s]
caldsver	4.6.4	 	ontime2	10067.43101728	Sum of GTIs [s]
date	2014-12-02T21:59:07	Date and time of file creation	ontime3	10061.190076292	Sum of GTIs [s]
revision	2	Processing version of data	ontime5	10067.55413729	Sum of GTIs [s]
			ontime6	10067.513097286	Sum of GTIs [s]
			ontime7	10067.595177293	Sum of GTIs [s]
			l1events	428791	Number of level 1 events

2.1.4 Events

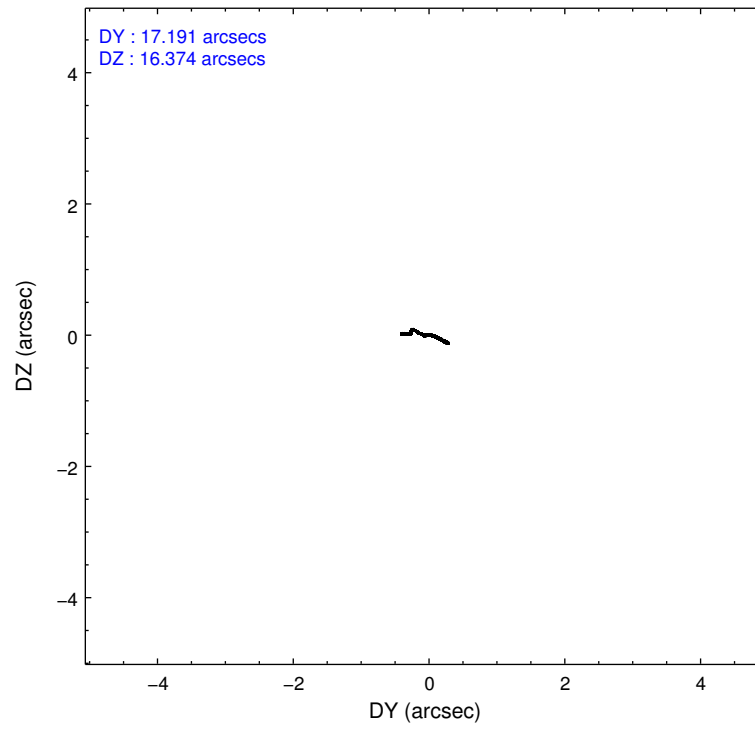
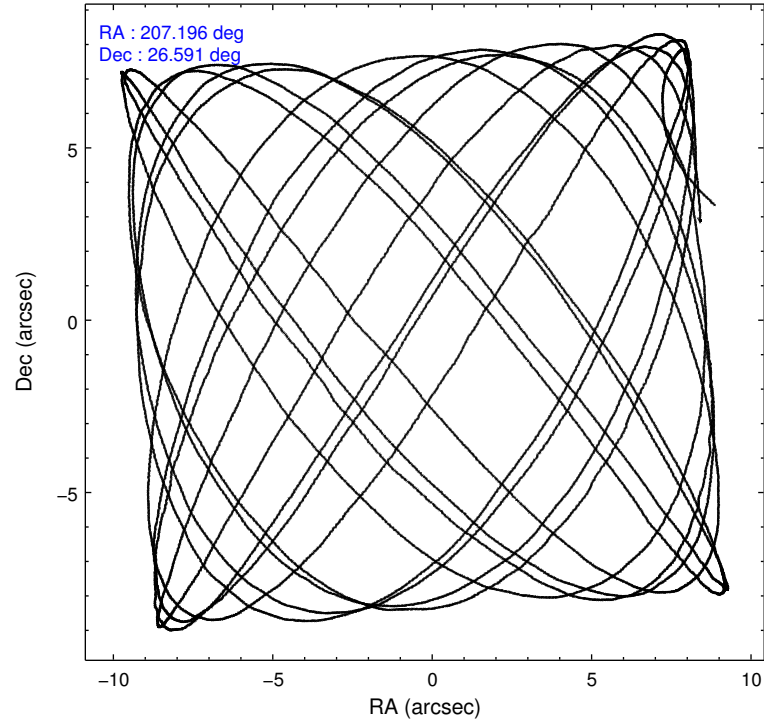
	ccd 2	ccd 3	ccd 5	ccd 6	ccd 7
level 1 events	54309	52713	94167	56568	171034
rejected events	47359	45819	48462	45036	41321
rejected %	87%	86%	51%	79%	24%

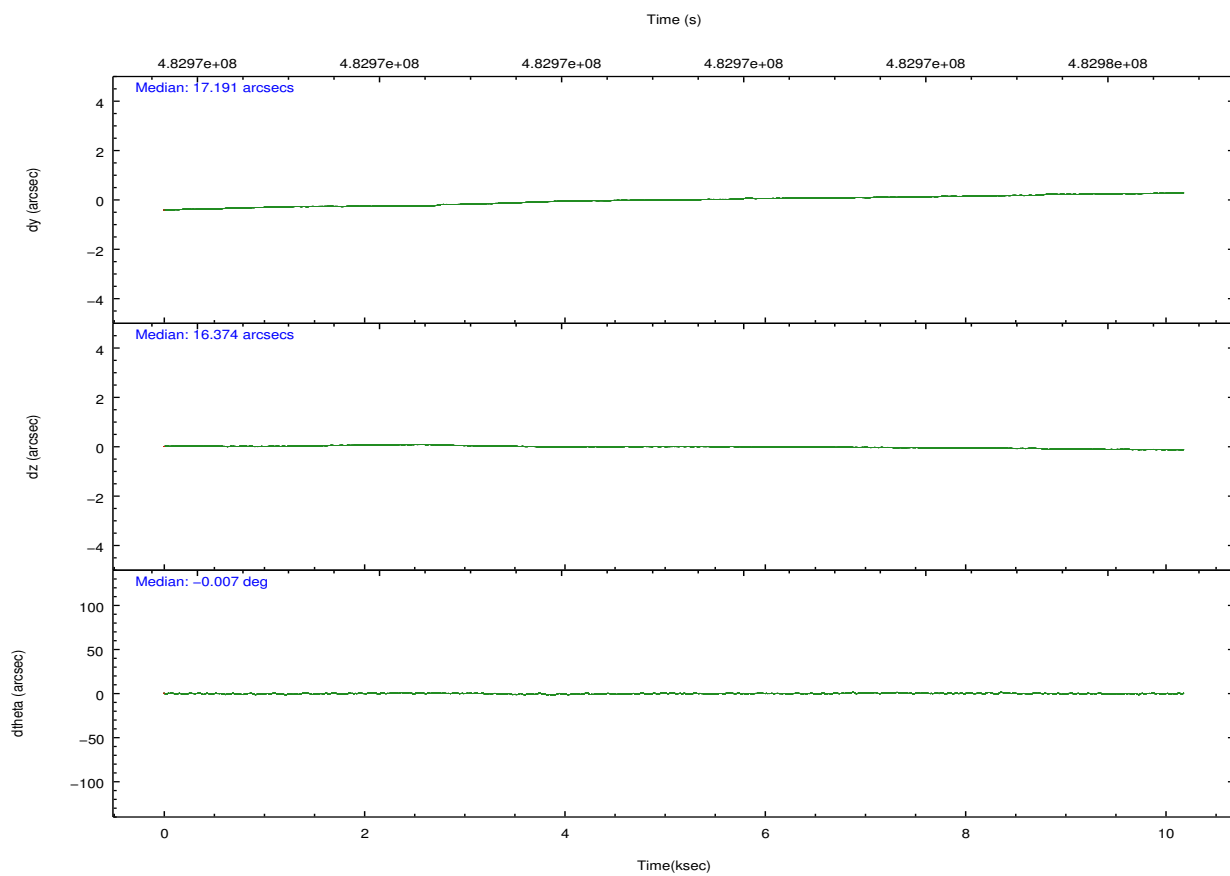
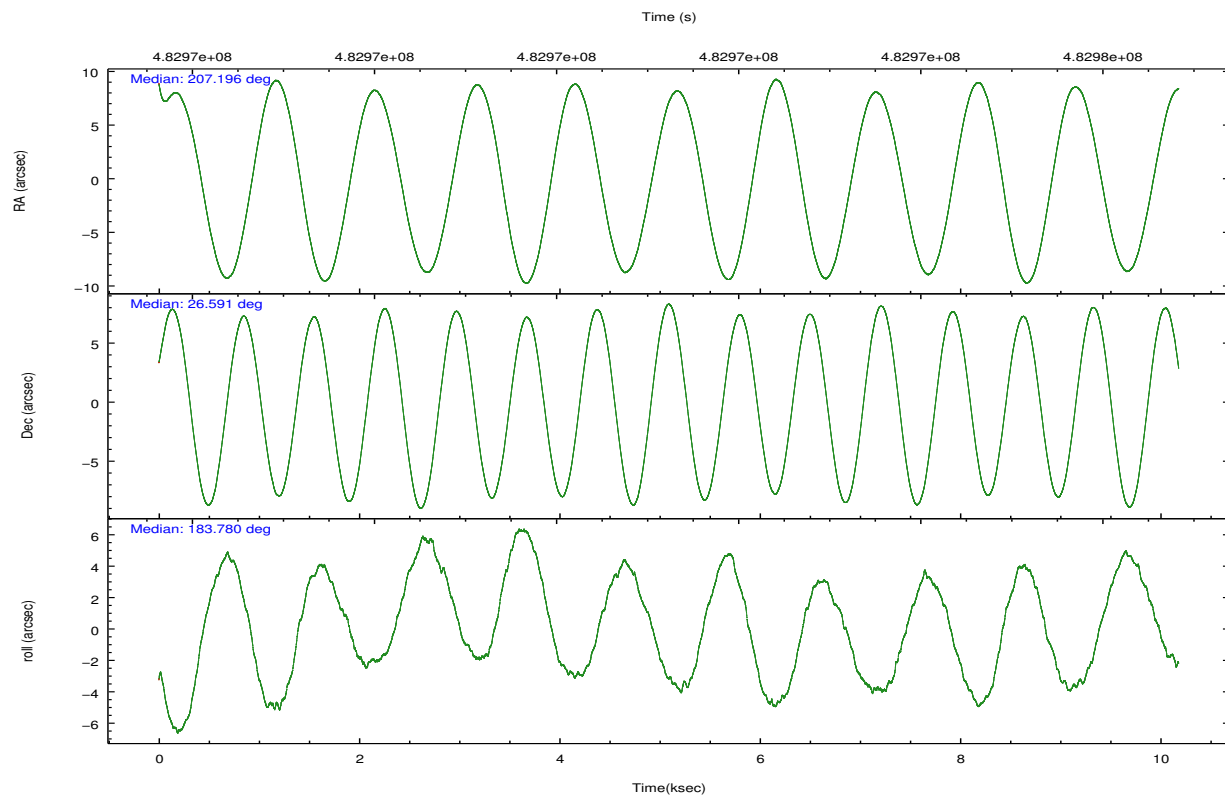
	ccd 2	ccd 3	ccd 5	ccd 6	ccd 7
grade 0 events	2845	2867	6405	6191	32787
	5%	5%	6%	10%	19%
grade 1 events	29	26	295	41	116
	0%	0%	0%	0%	0%
grade 2 events	1586	1387	13439	2028	32494
	2%	2%	14%	3%	18%
grade 3 events	623	633	1619	852	13884
	1%	1%	1%	1%	8%
grade 4 events	677	676	1416	802	13602
	1%	1%	1%	1%	7%
grade 5 events	2235	2870	6909	2786	7929
	4%	5%	7%	4%	4%
grade 6 events	1221	1333	22849	1668	37025
	2%	2%	24%	2%	21%
grade 7 events	45093	42921	41235	42200	33197
	83%	81%	43%	74%	19%

2.2 Compared Parameters

Parameter	Planned	Actual	Parameter	Planned	Actual
Instrument	ACIS	ACIS	Obspar format version number	7	7
Detector	ACIS-23567	ACIS-23567	Obspar file type	PREDICTED	ACTUAL
Grating	NONE	NONE	Obspar update status	NONE	UPDATED
Data mode	VFAINT	VFAINT	Number of optional ACIS chips dropped	0	0
Observation mode	POINTING	POINTING	On-chip summing requested	N	N
[deg] Pointing RA	207.221457	207.1963099175742	Subarray requested	NONE	NONE
[deg] Pointing Dec	26.606637	26.59116127059719	Alternating exposures requested	N	N
[deg] Pointing Roll	183.617824	183.7857150284805	[s] Primary exposure time	0.000000	3.1
[mm] SIM focus pos	-0.684267	-0.6828225247311905			
[mm] SIM defocus	0	0.001444936568705701			
[mm] SIM translation stage pos	-190.132523	-190.1400660498719			
[mm] SIM translation stage offset	0	0.00754346686406393			
[s] Observation start time (MET)	482966320.184000	482965313.53394			
Observation start date	2013-04-21T21:17:33	2013-04-21T21:01:53			
[s] Observation end time (MET)	482976320.184000	482976454.25954			
Observation end date	2013-04-22T00:04:13	2013-04-22T00:07:34			
Read mode	TIMED	TIMED			

2.3 Aspect



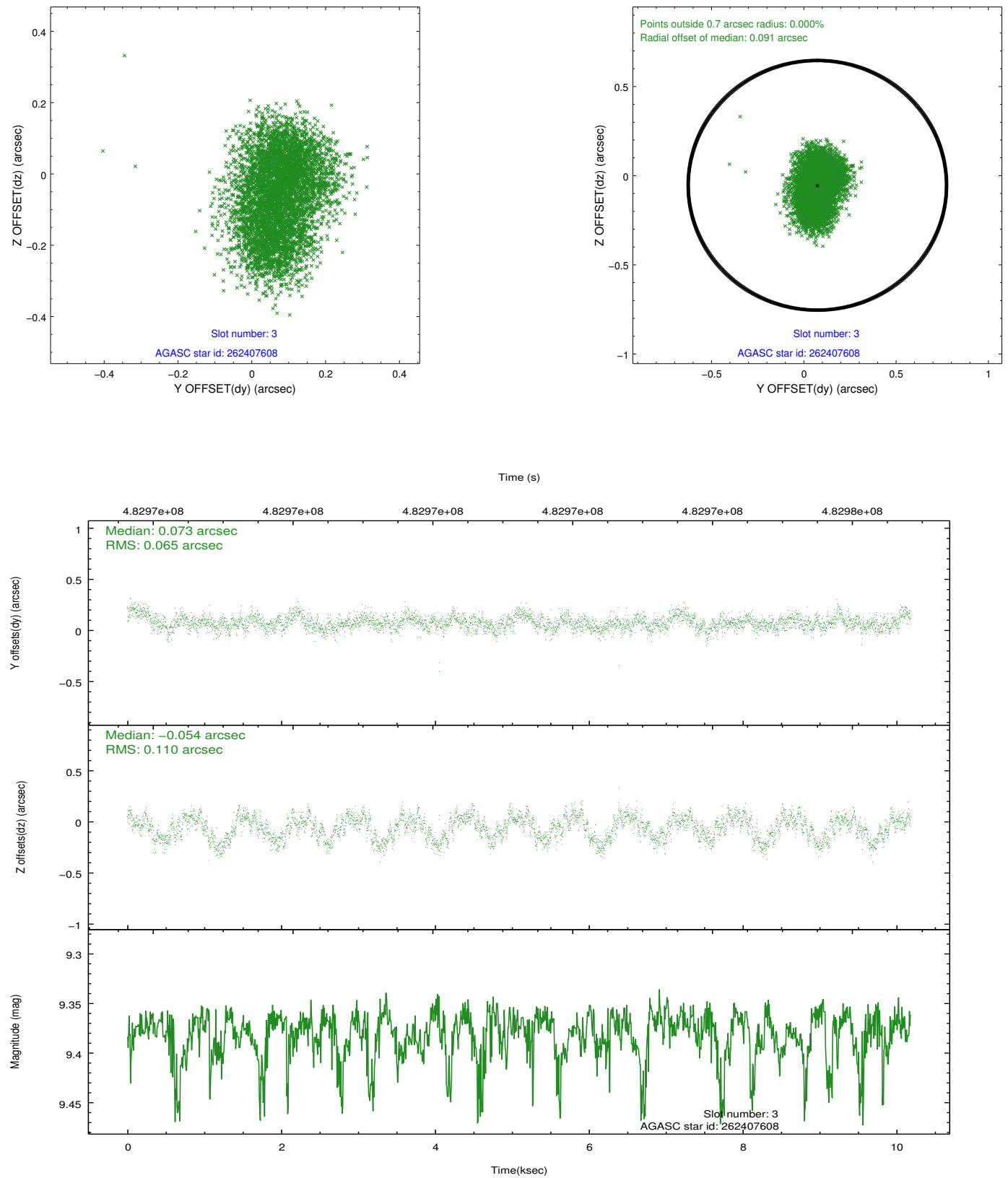


Slot Statistics

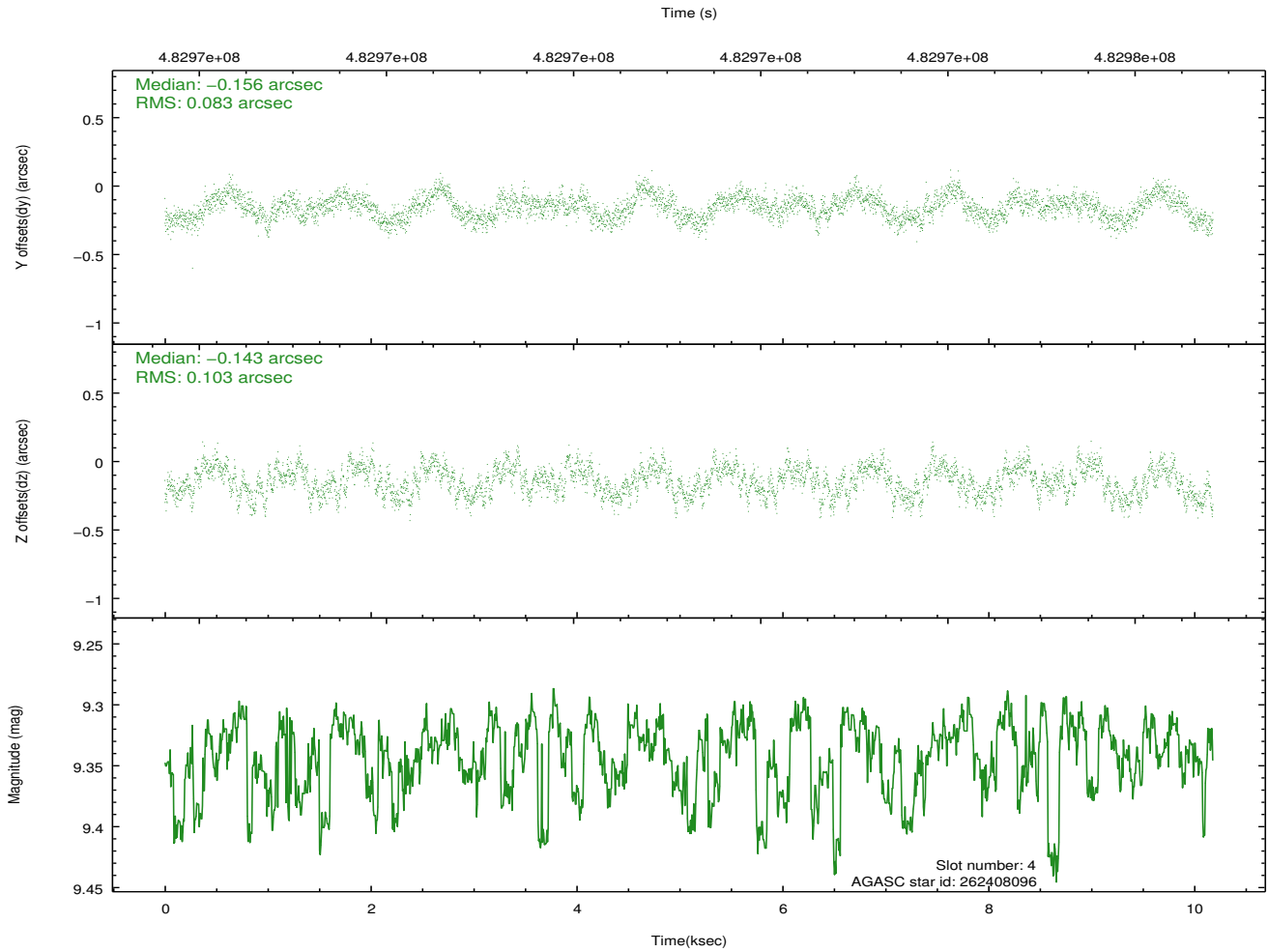
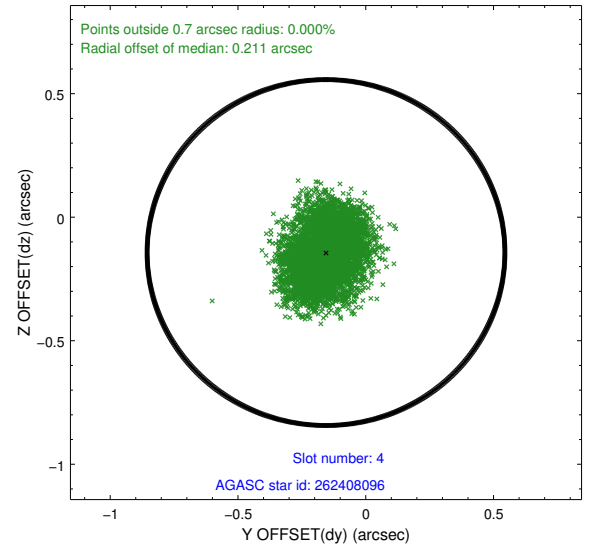
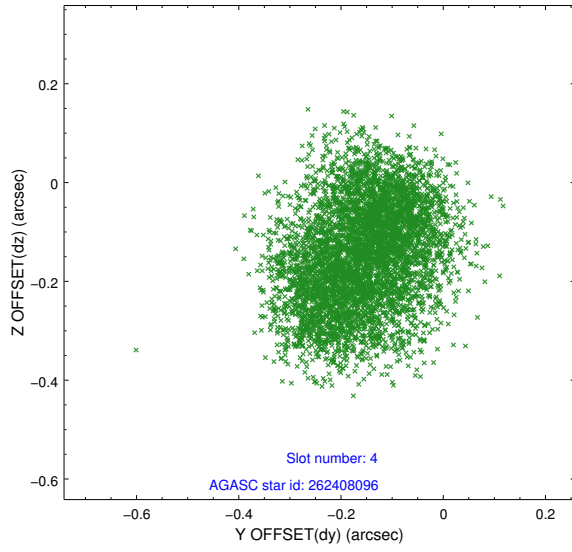
slot	status	used	id	mag	n_pts	med_dy	med_dz	dr1	dr2	ra	dec	mean_y	mean_z
0	FID		ACIS-S-1	7.01	2484	0.099	-0.119	0.010	0.018	0.000000	0.000000	925.98	-1733.51
1	FID		ACIS-S-5	7.05	2484	-0.143	0.058	0.013	0.021	0.000000	0.000000	-1823.01	163.63
2	FID		ACIS-S-6	7.14	2484	0.020	0.073	0.011	0.018	0.000000	0.000000	390.84	808.24
3	GUIDE	used	262407608	9.38	4959	0.073	-0.054	0.139	0.214	207.378401	26.435507	-465.75	646.84
4	GUIDE	used	262408096	9.34	4946	-0.156	-0.143	0.145	0.216	207.011678	26.515421	695.76	284.76
5	GUIDE	used	262408512	7.98	4965	-0.138	0.152	0.072	0.114	207.800210	27.128796	-1968.89	-1762.88
6	GUIDE	used	262409552	8.19	4967	0.047	0.123	0.083	0.144	206.584269	27.192805	1903.38	-2239.36
7	GUIDE	used	262275256	7.74	4964	0.170	-0.063	0.088	0.158	206.467522	27.226414	2268.79	-2386.19

2.4 Star Slots

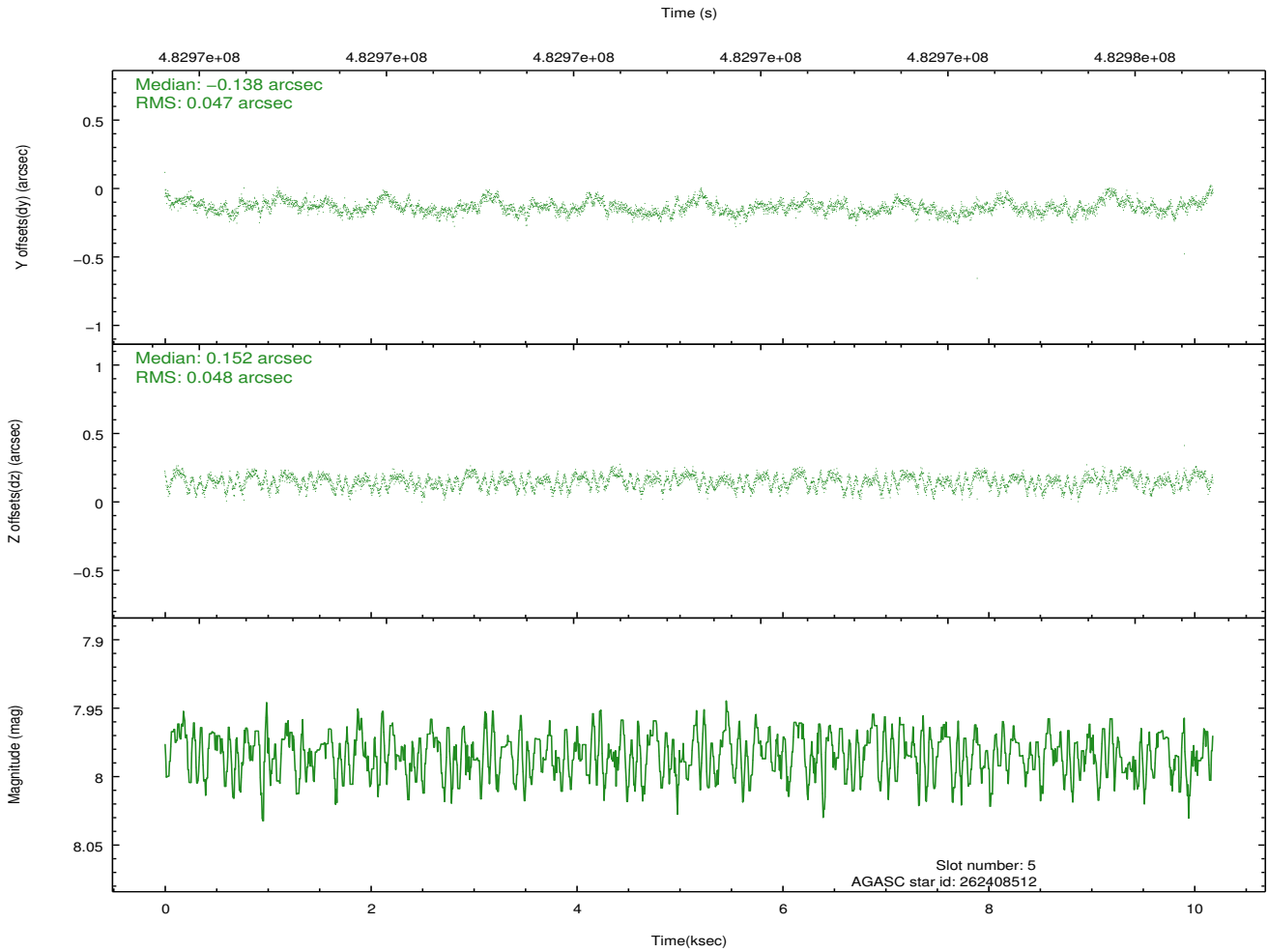
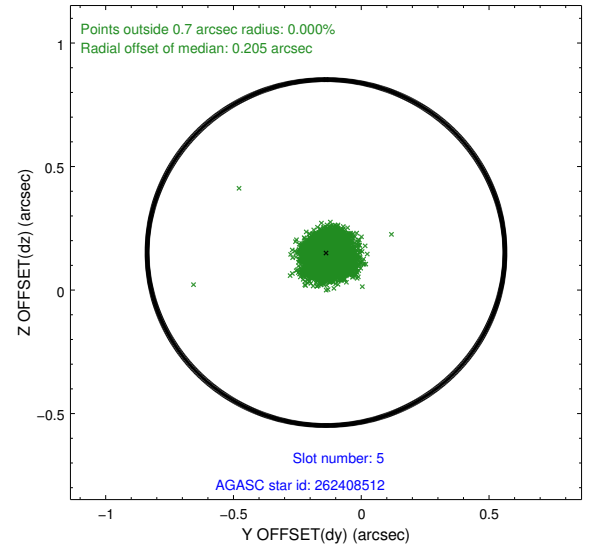
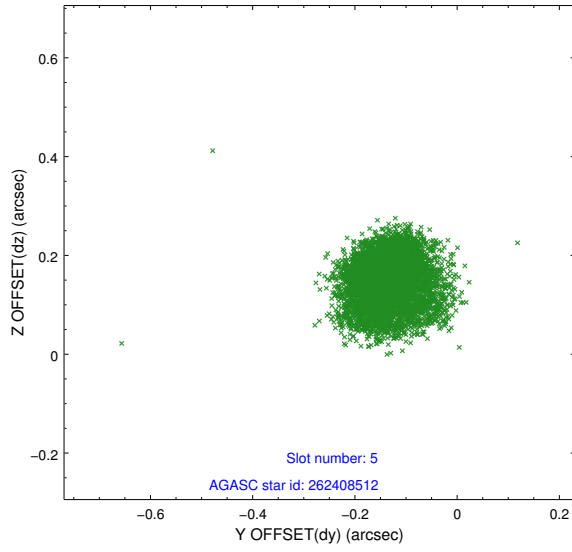
2.4.1 Slot 3



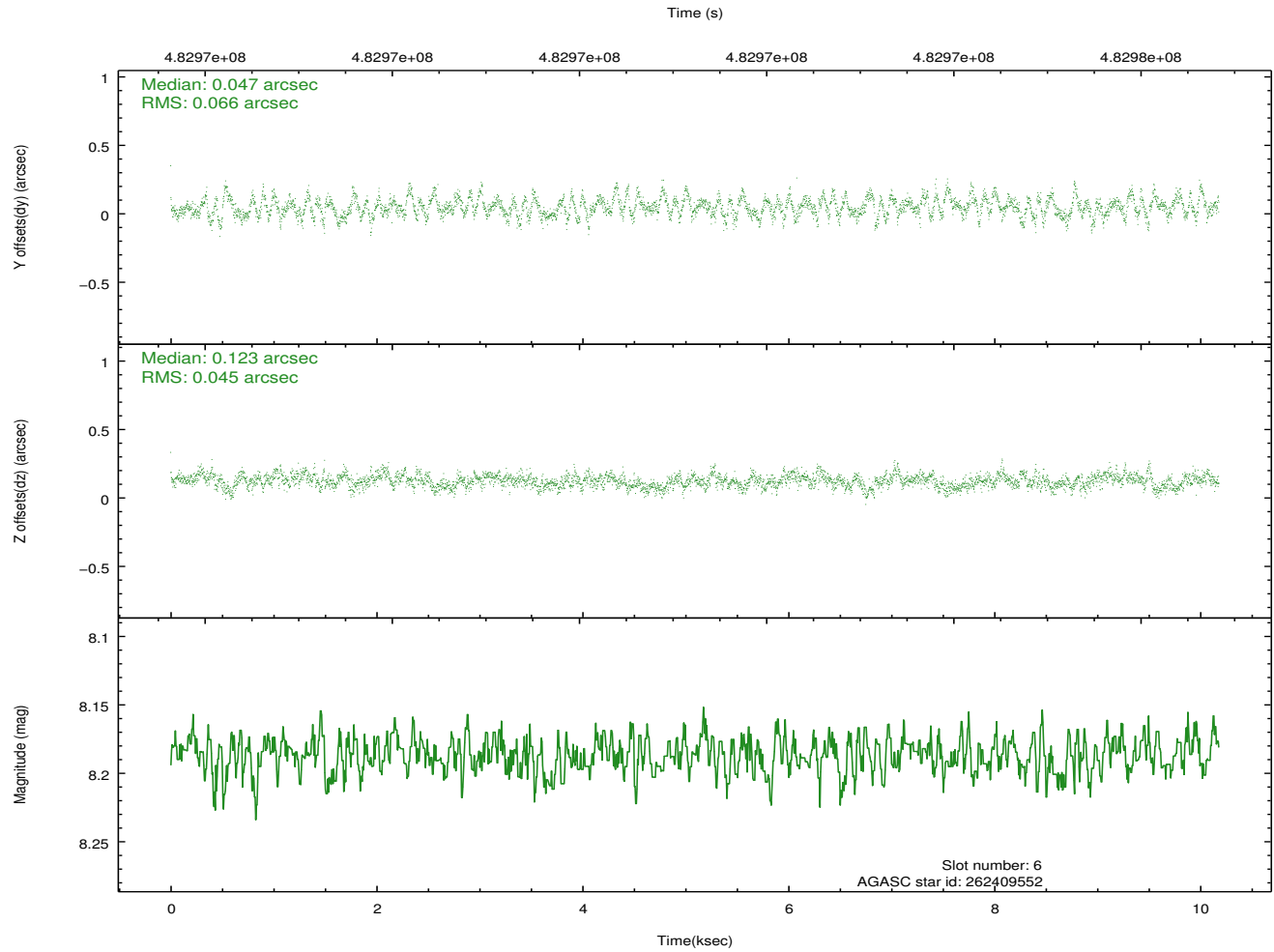
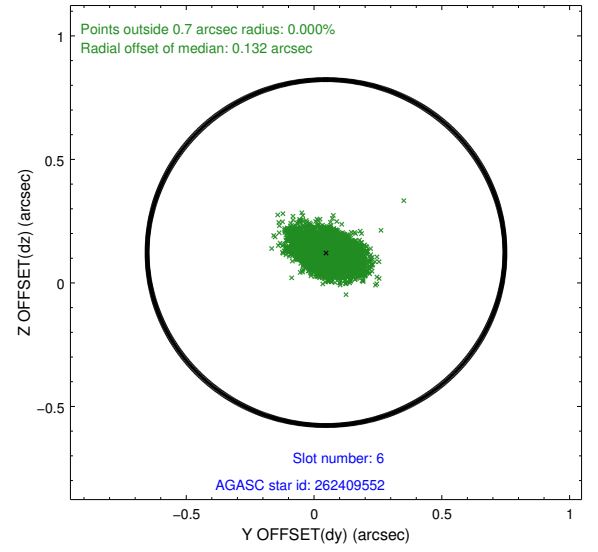
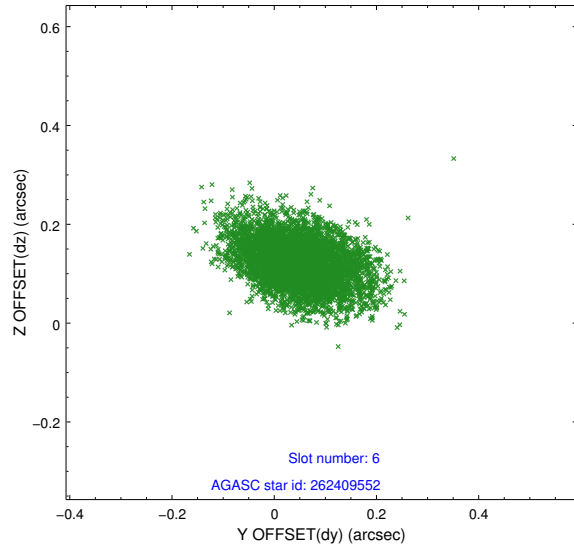
2.4.2 Slot 4



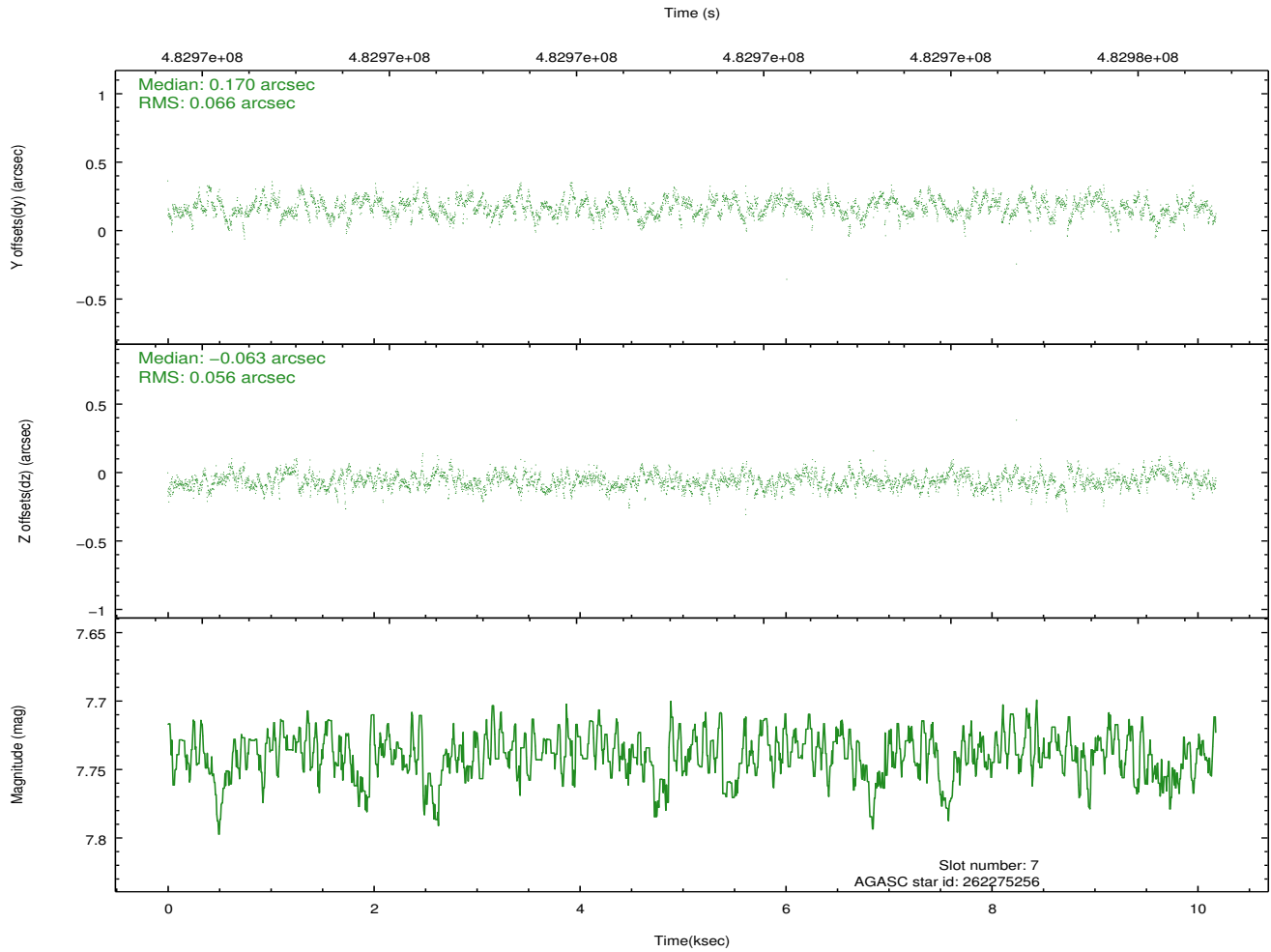
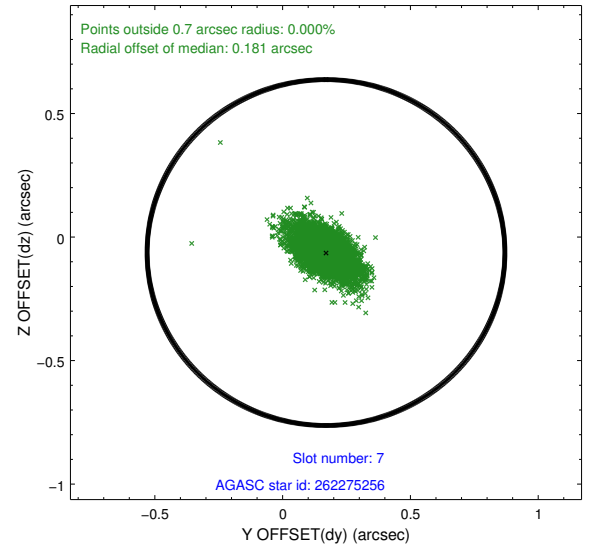
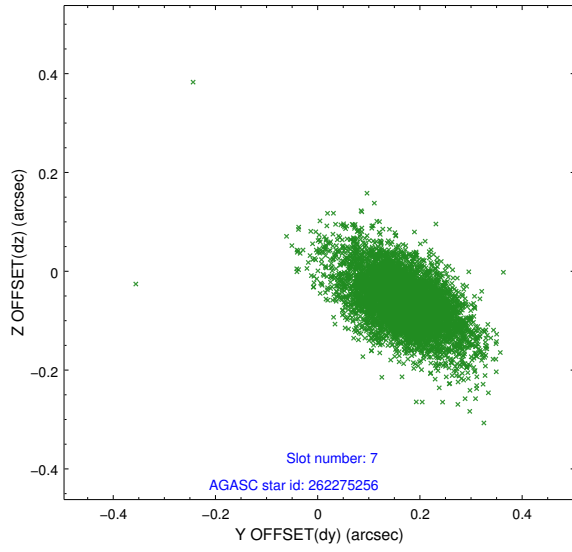
2.4.3 Slot 5



2.4.4 Slot 6

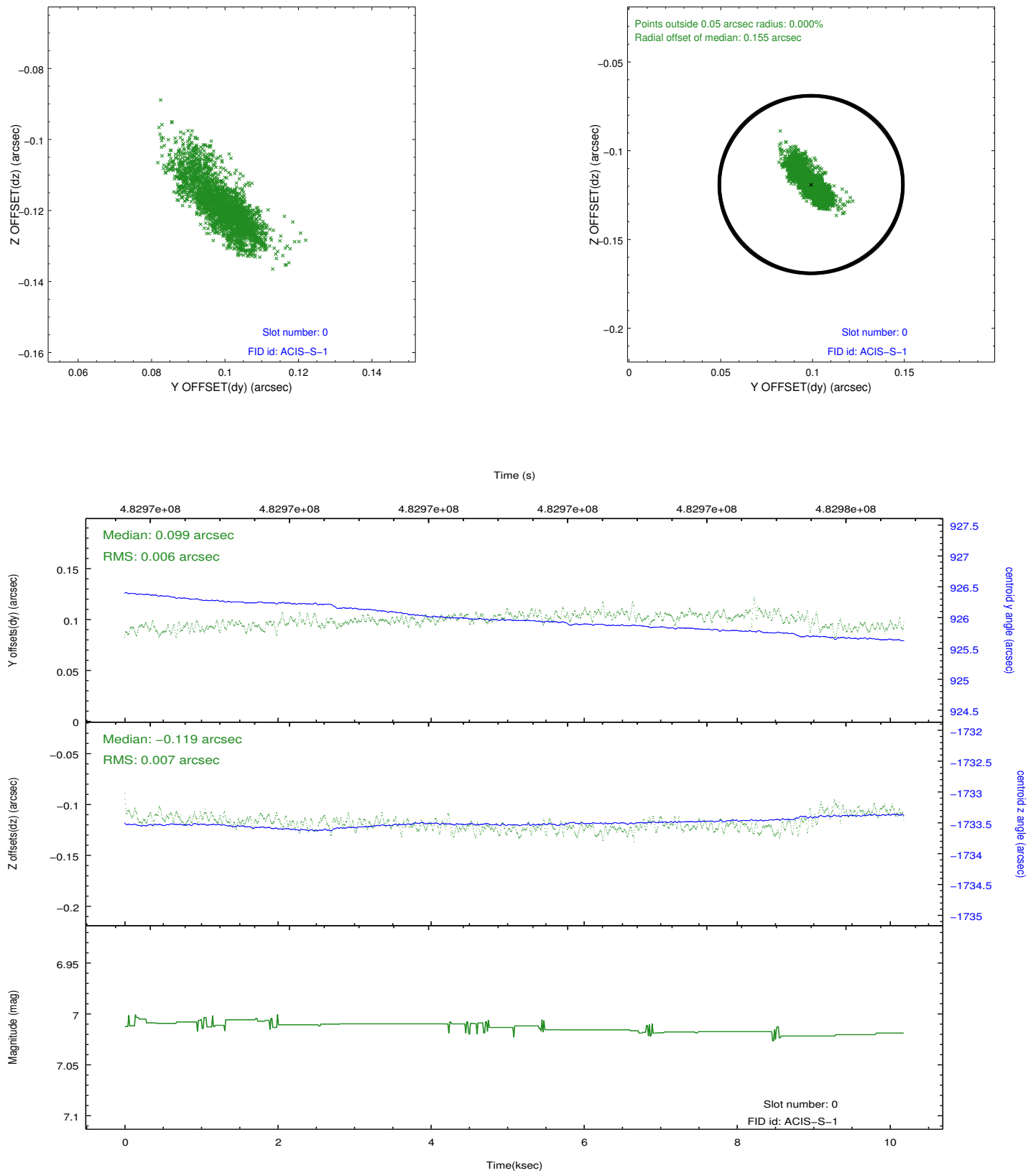


2.4.5 Slot 7

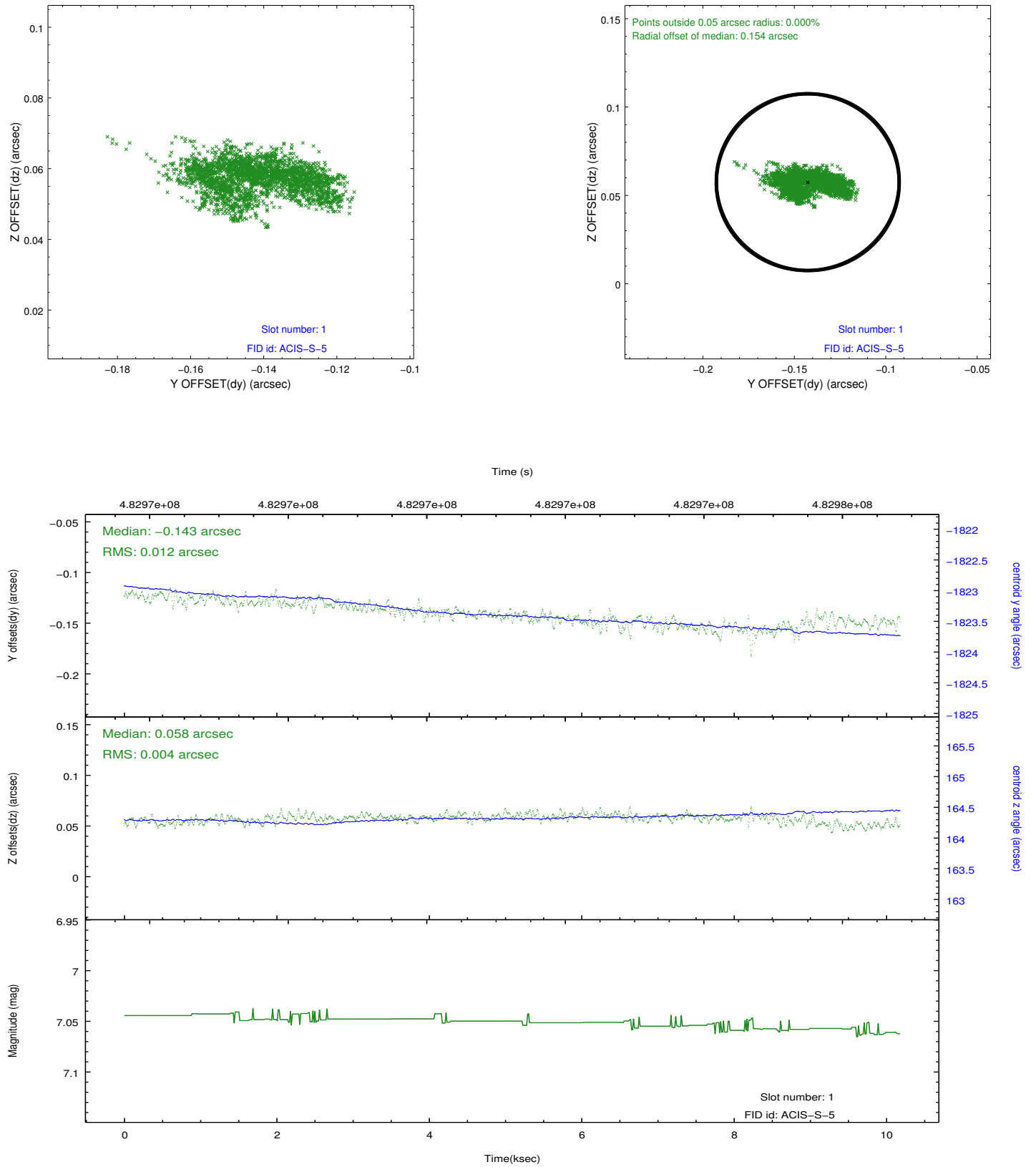


2.5 FID Slots

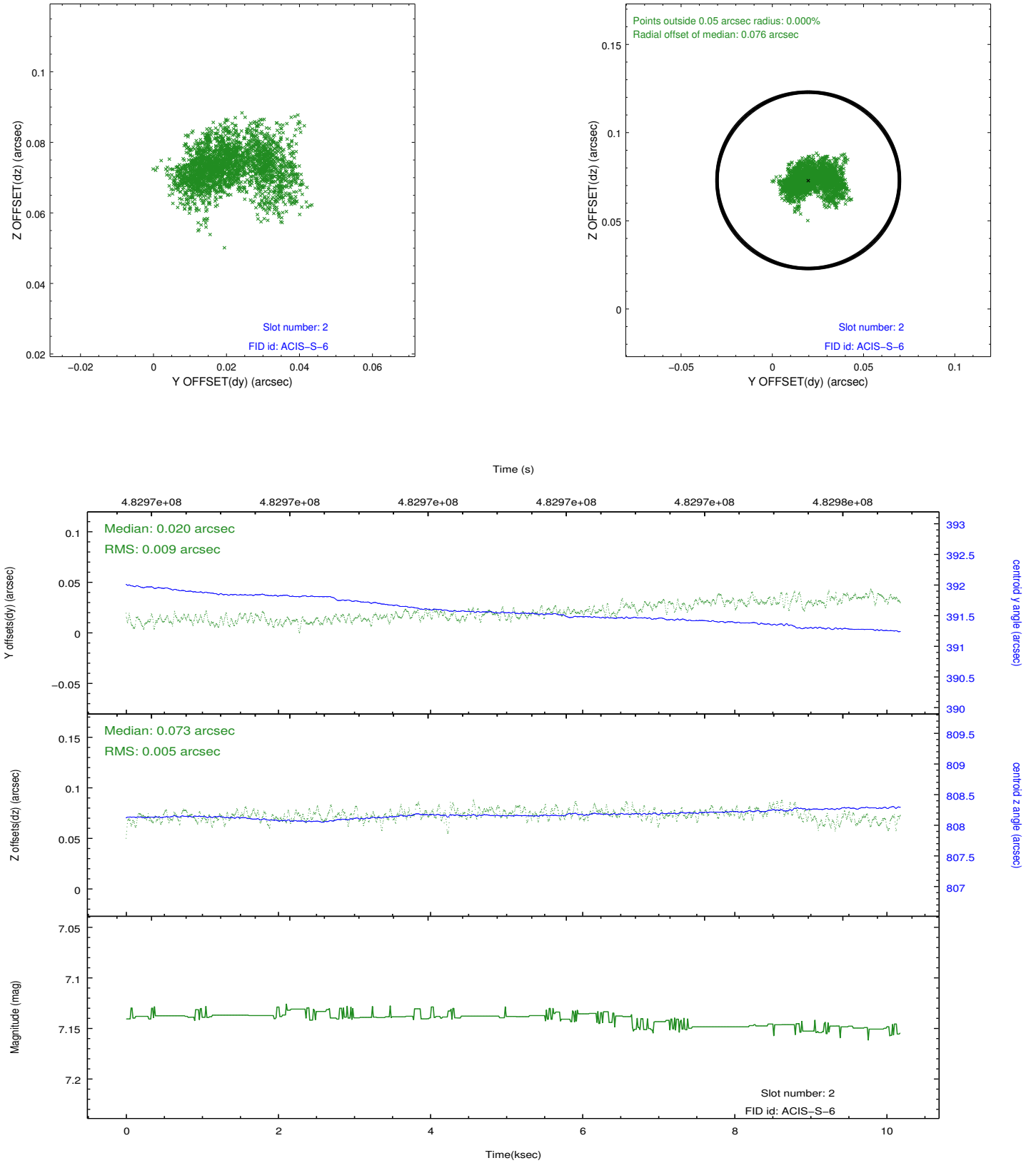
2.5.1 Slot 0



2.5.2 Slot 1



2.5.3 Slot 2



A Summary

A.1 Status

V&V Scientist	Beth Sundheim
V&V Date (YYYY-MM-DD)	2014.12.10
V&V Edition	1
V&V Disposition and Status	OK
V&V Charge Time	10.067595177293

A.2 Comments

These data have been reprocessed with new aspect alignment calibration files that correct small mean offsets (up to 0.4 arcsecs) and improve overall astrometric accuracy. The new calibration was determined using data from the time period being reprocessed and was performed using cross-correlation of X-ray sources with radio and optical counterparts.