

V&V Reference Report

L2 ASCDS Version : 8.4.5

Observation 14322 - L2 Version 3
Chandra X-Ray Center

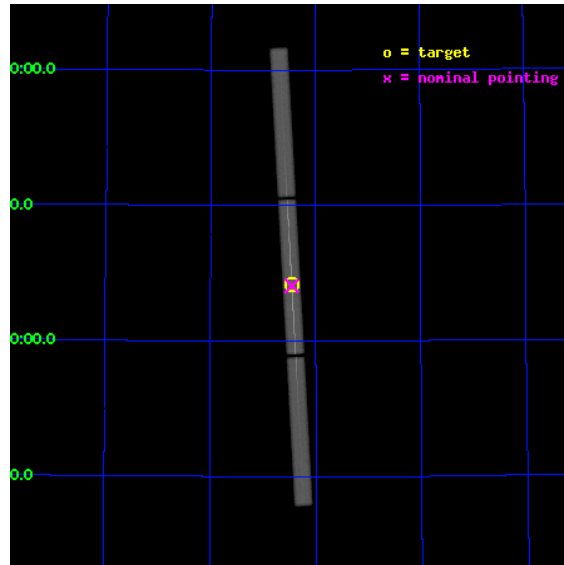
L2 Processing Date : Aug 10 2012

Contents

1	Front	2
2	OBI	3
2.1	OBI	3
2.1.1	Images	3
2.1.2	Parameters	4
2.1.3	Events	4
2.2	Compared Parameters	5
2.3	Aspect	6
2.4	Star Slots	9
2.4.1	Slot 3	9
2.4.2	Slot 4	10
2.4.3	Slot 5	11
2.4.4	Slot 6	12
2.4.5	Slot 7	13
2.5	FID Slots	14
2.5.1	Slot 0	14
2.5.2	Slot 1	15
2.5.3	Slot 2	16
3	Gratings	17
3.1	LETG Arm	17
A	Summary	19
A.1	Status	19
A.2	Comments	19

1 Front

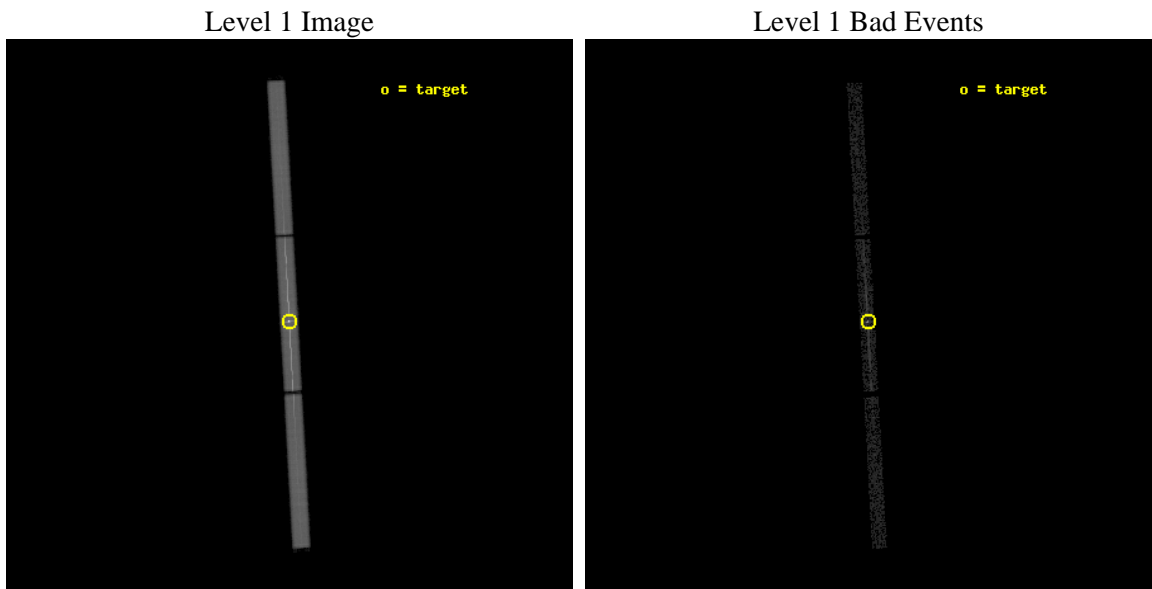
seq_num	790241	Sequence number
obs_id	14322	Observation id
title	AO-13 Calibration Observations of Mkn421 to Calibrate the New HRC-S HV Setting	Proposal title
observer	Dr. CXC Calibration	Principal investigator
object	MKN421[Voltage:current default]	Source name
ra_targ	166.113333	Observer's specified target RA [deg]
dec_targ	38.208806	Observer's specified target Dec [deg]
ra_nom	166.1130402768	Nominal RA [deg]
dec_nom	38.203947902921	Nominal Dec [deg]
roll_nom	266.76335877892	Nominal Roll [deg]
revision	3	Processing version of data
ontime	10013.481784344	[s]
livetime	9917.579584432	Ontime multiplied by DTCOR
l2events	844185	Number of level 2 events



2 OBI

2.1 OBI

2.1.1 Images



2.1.2 Parameters

obi_num	0	Obi number	sched_exp_time	10000.000000	[s] Scheduled observation exposure time
ascdsver	8.4.5	Processing system revision	ontime	10013.481784344	[s]
caldsver	4.5.1.1	 	l1events	1103437	Number of level 1 events
date	2012-08-10T06:24:26	Date and time of file creation			
revision	3	Processing version of data			

2.1.3 Events

Level 1 Events

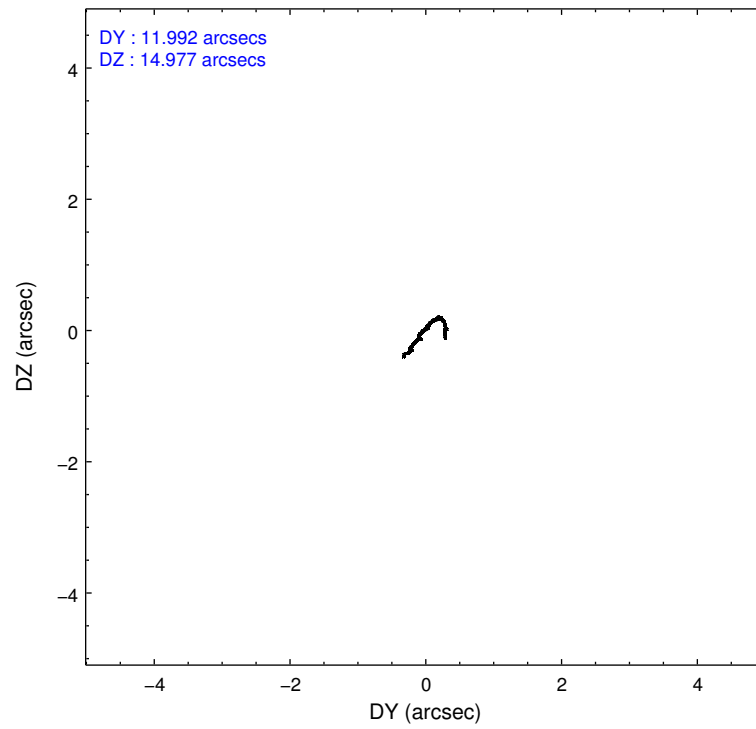
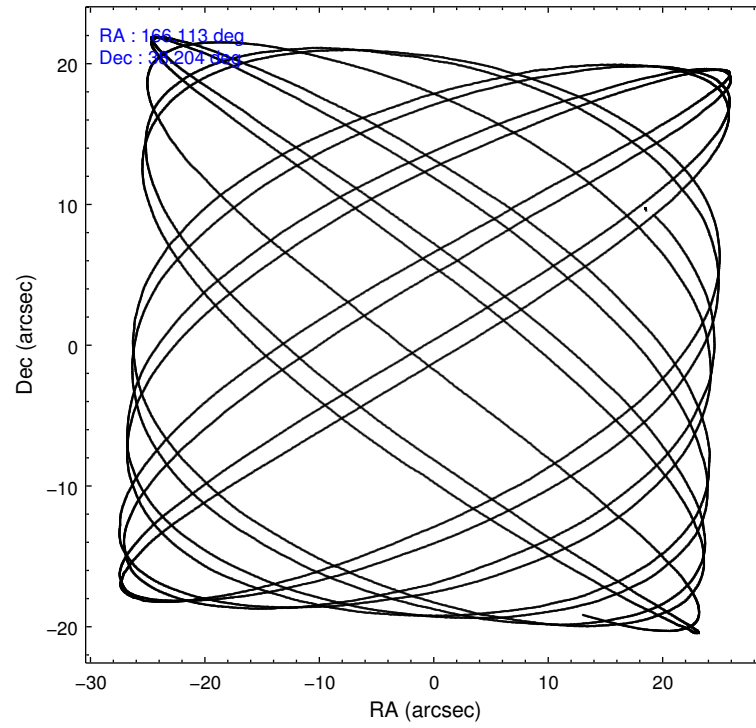
	segment 1	segment 2	segment 3
level 1 events	317026	468430	317981
rejected events	5036	8023	5188
rejected %	1%	1%	1%

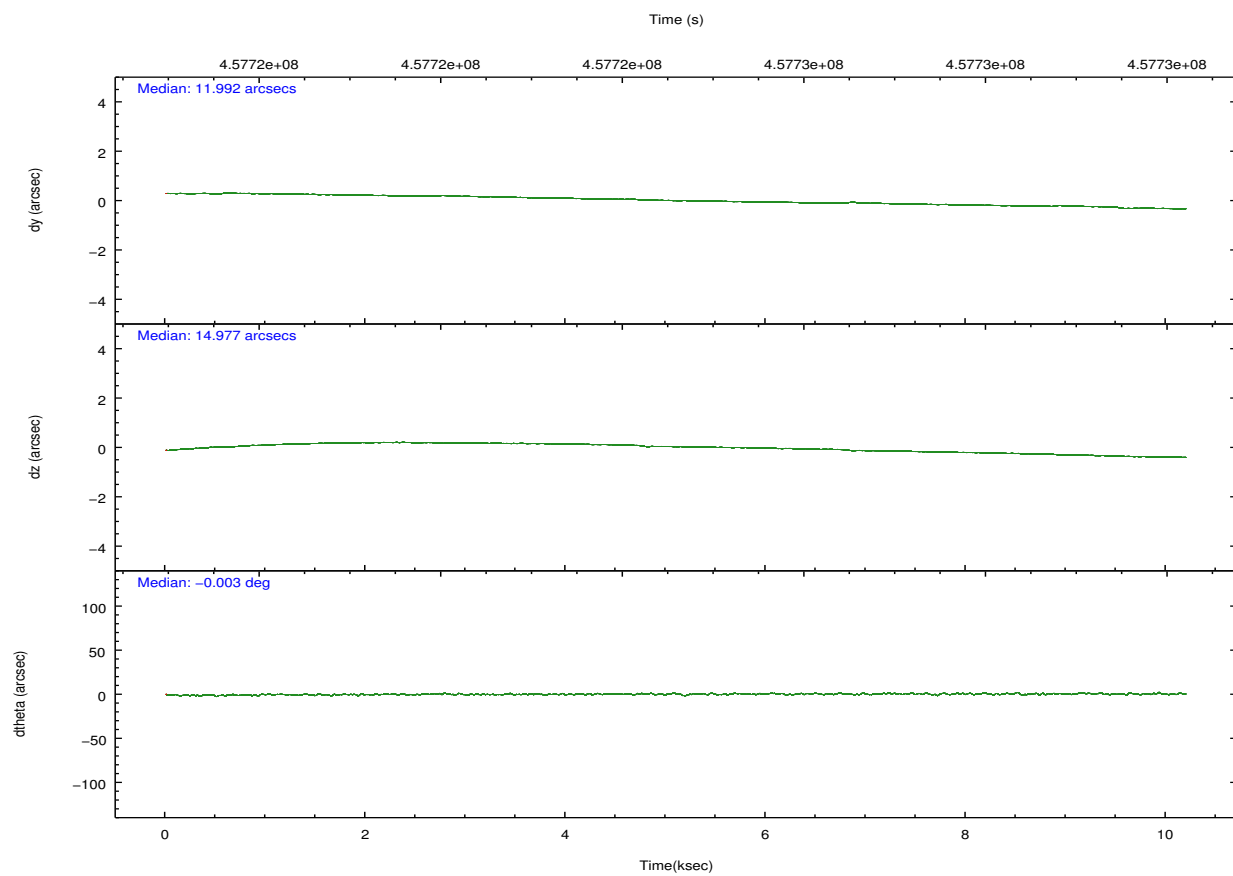
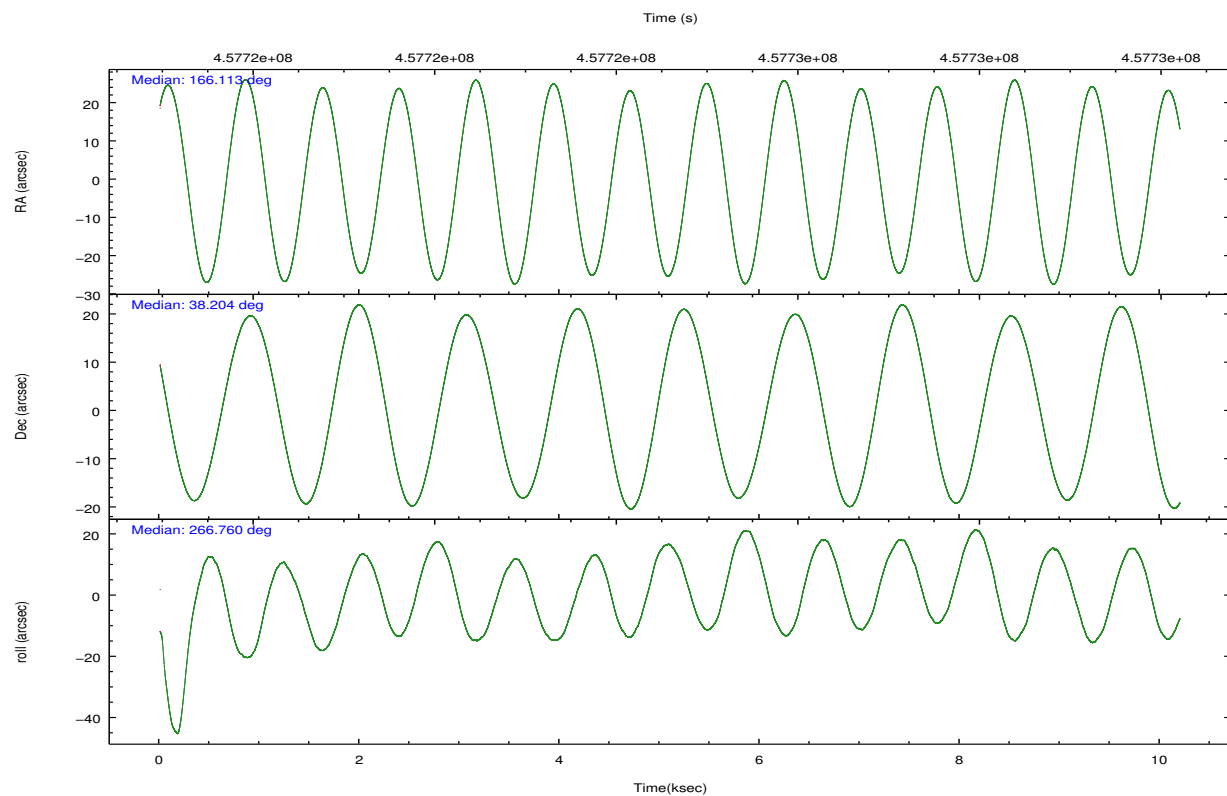
2.2 Compared Parameters

Parameter	Planned	Actual
Instrument	HRC	HRC
Detector	HRC-S	HRC-S
Grating	LETG	LETG
Data mode	OBSERVING	OBSERVING
Observation mode	POINTING	POINTING
[deg] Pointing RA	166.094844	166.1130402768038
[deg] Pointing Dec	38.229005	38.2039479029207
[deg] Pointing Roll	266.707431	266.7633587789207
[mm] SIM focus pos	-1.4281808131	-1.4281808131
[mm] SIM defocus	0.1051557500557434	0.1051557500557434
[mm] SIM translation stage pos	250.4660330802	250.4660330802
[mm] SIM translation stage offset	-0.01005726120527584	-0.01005726120527584
[s] Observation start time (MET)	457718936.41366	457718936.41366
Observation start date	2012-07-03T16:20:31	2012-07-03T16:08:56
[s] Observation end time (MET)	457729831.13924	457729831.13924
Observation end date	2012-07-03T19:07:11	2012-07-03T19:10:31

Parameter	Planned	Actual
Obspar format version number	7	7
Obspar file type	PREDICTED	ACTUAL
Obspar update status	OVERRIDE	OVERRIDE

2.3 Aspect



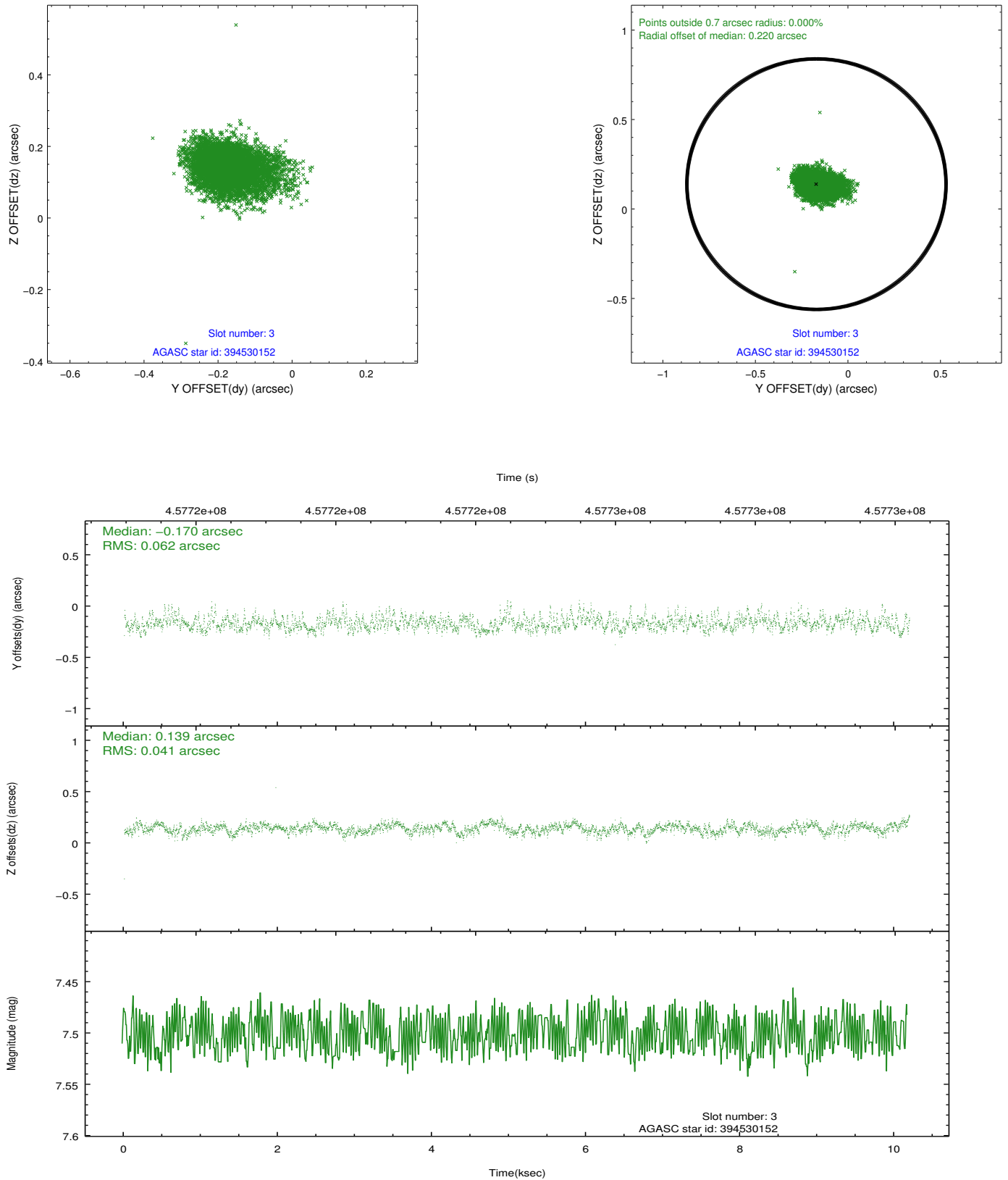


Slot Statistics

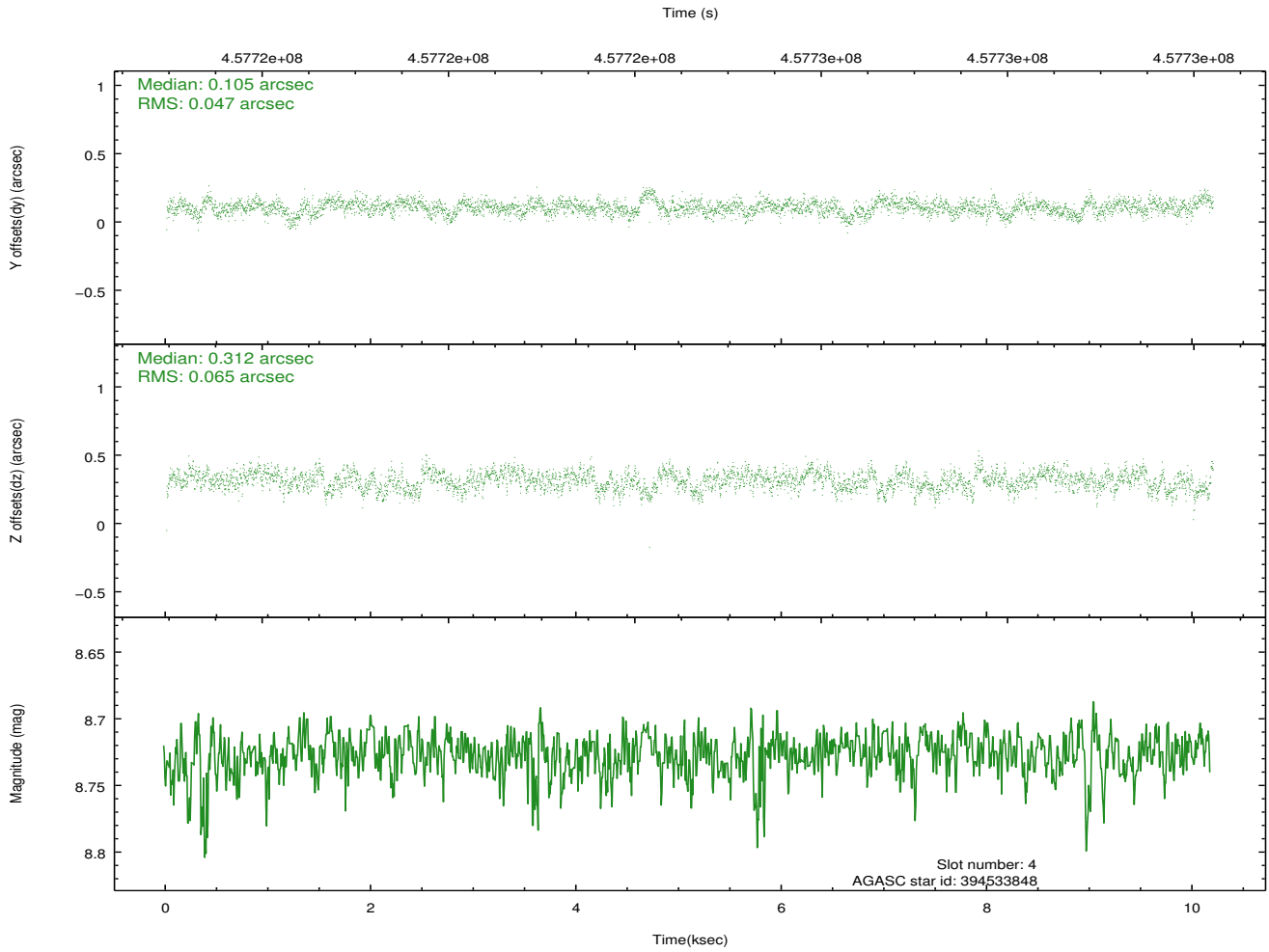
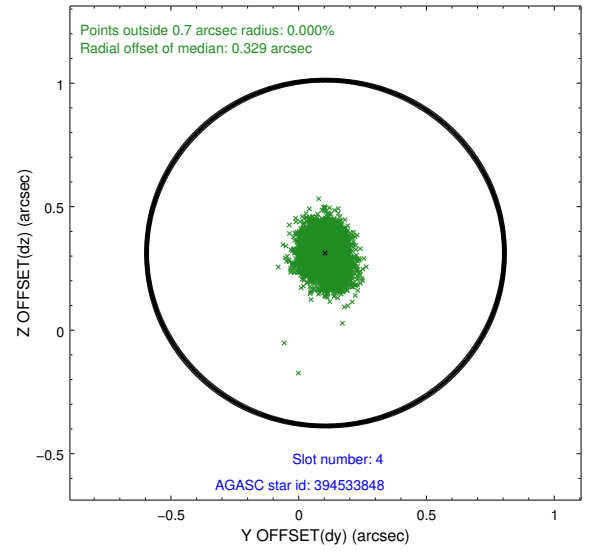
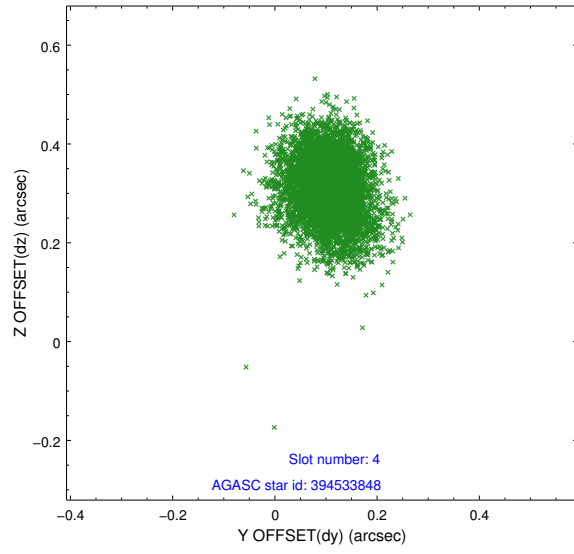
slot	status	id	mag	n_pts	med_dy	med_dz	dr1	dr2	ra	dec	mean_y	mean_z
0	FID	HRC-S-1	7.01	2487	0.056	-0.193	0.007	0.011	0.000000	0.000000	-1166.35	-463.82
1	FID	HRC-S-2	7.00	2487	0.283	-0.134	0.005	0.010	0.000000	0.000000	1233.09	-456.59
2	FID	HRC-S-3	7.01	2486	0.051	0.024	0.007	0.012	0.000000	0.000000	-1168.58	565.74
3	GUIDE	394530152	7.50	4972	-0.170	0.139	0.076	0.131	166.075805	38.868252	-2294.71	-185.65
4	GUIDE	394533848	8.73	4973	0.105	0.312	0.084	0.137	166.382906	38.276007	-218.01	798.81
5	GUIDE	394543960	9.80	4942	0.168	0.211	0.154	0.245	165.802757	37.787371	1633.72	-738.08
6	GUIDE	394546712	6.60	4973	-0.182	0.278	0.076	0.130	166.451462	38.394357	-653.79	969.22
7	GUIDE	394546720	6.42	4970	0.068	-0.936	0.110	0.177	166.130115	38.241361	-50.35	96.10

2.4 Star Slots

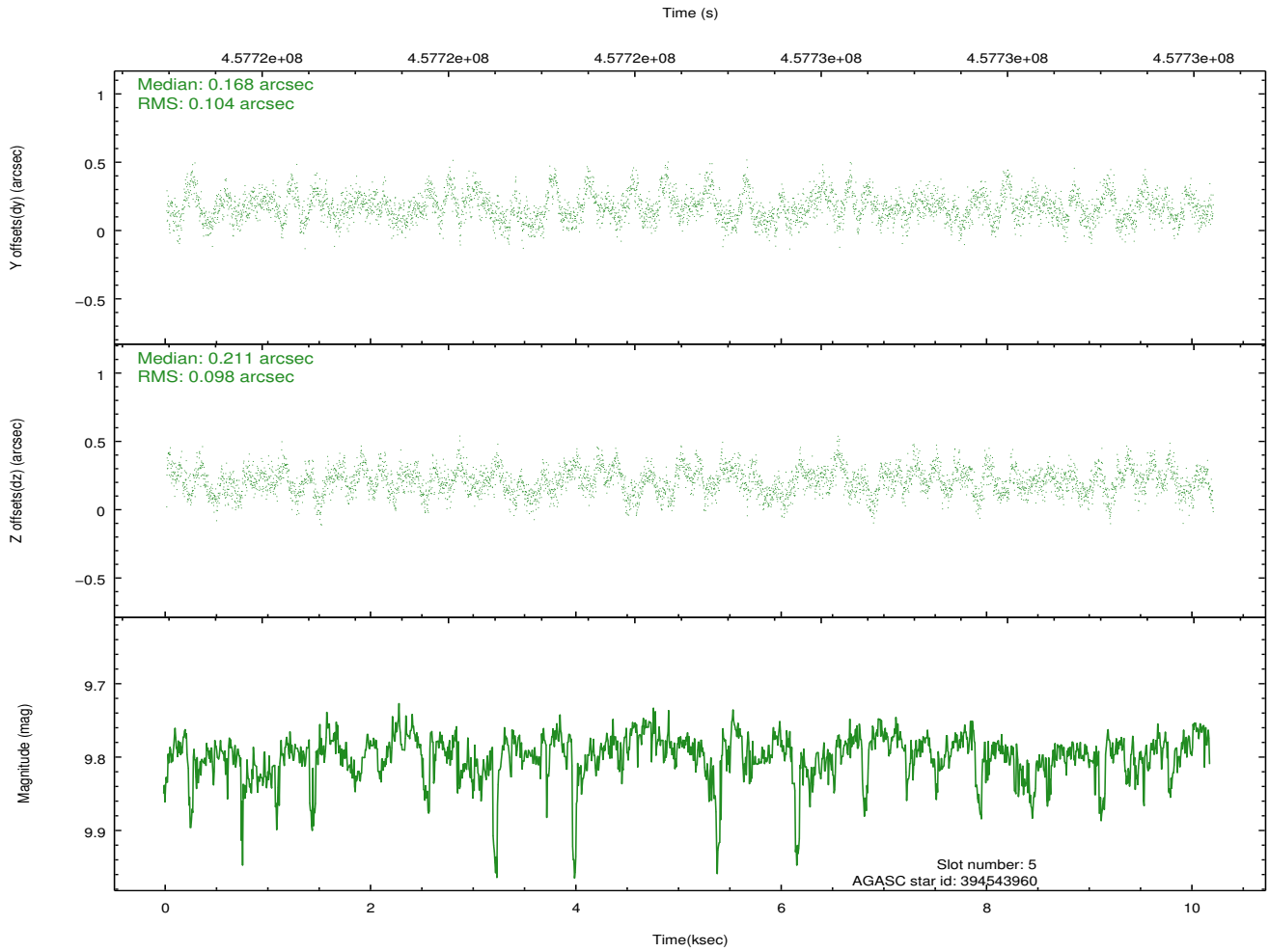
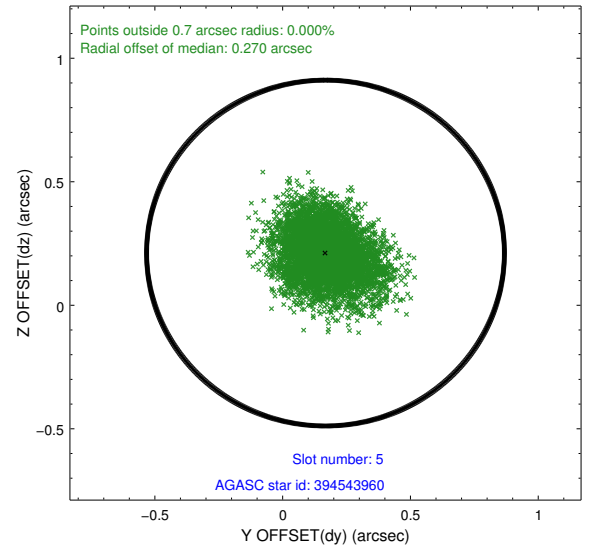
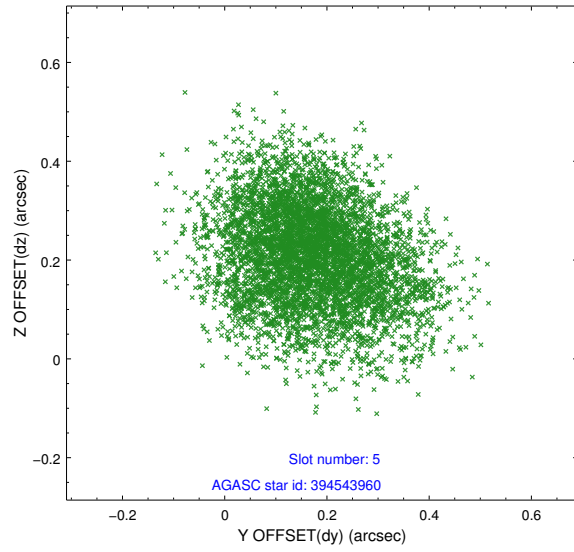
2.4.1 Slot 3



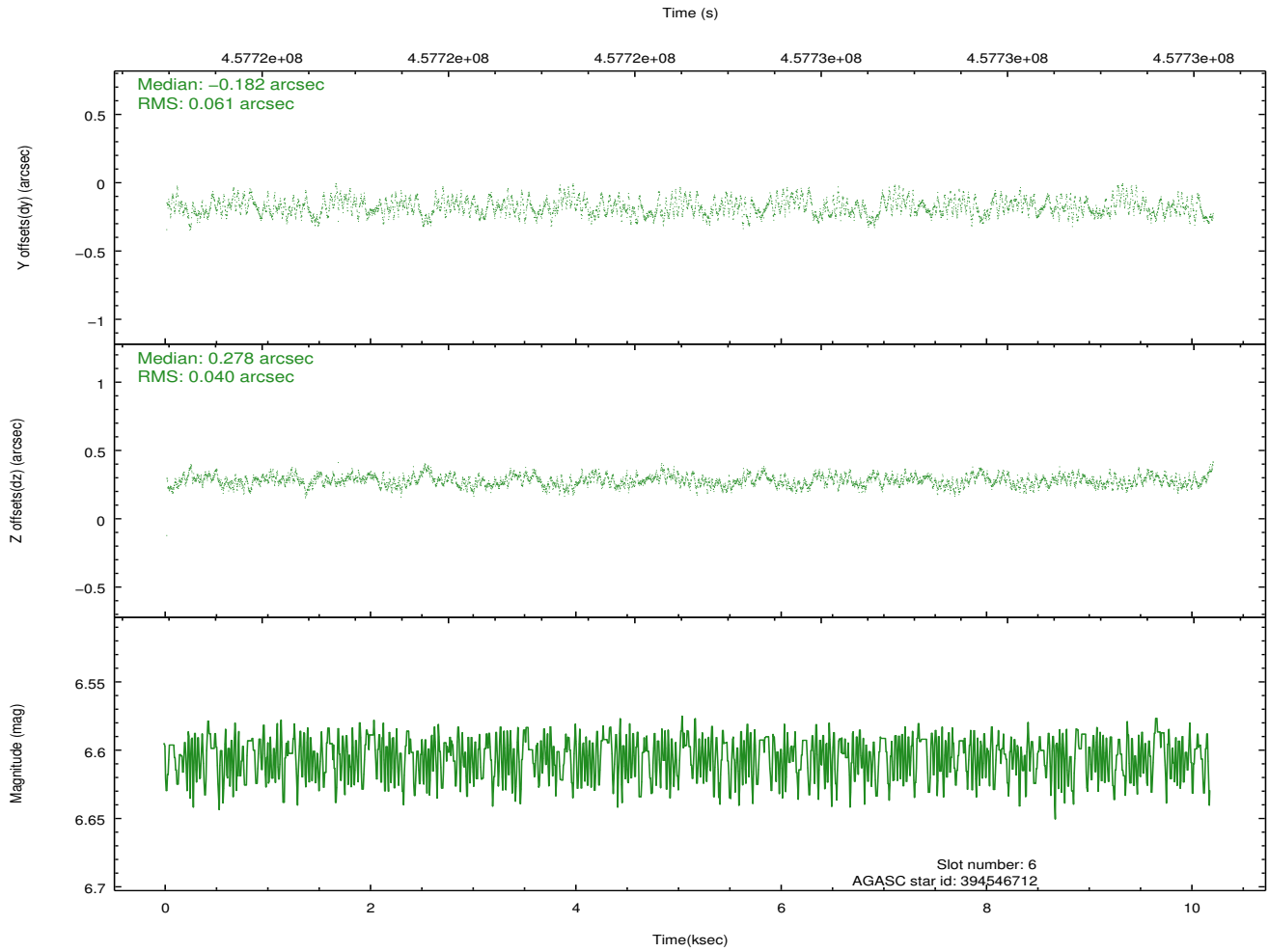
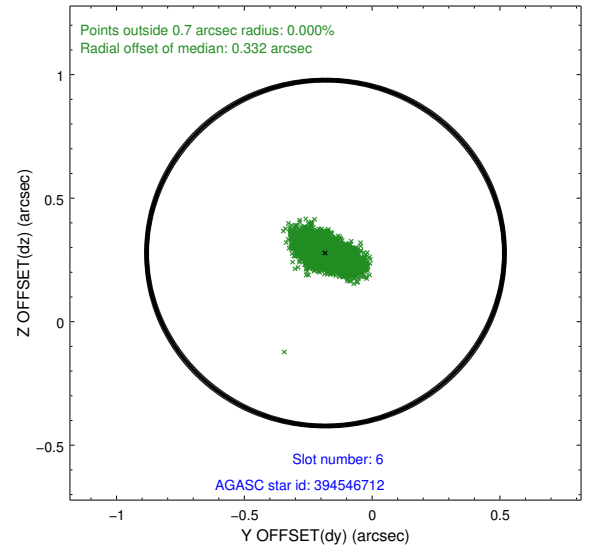
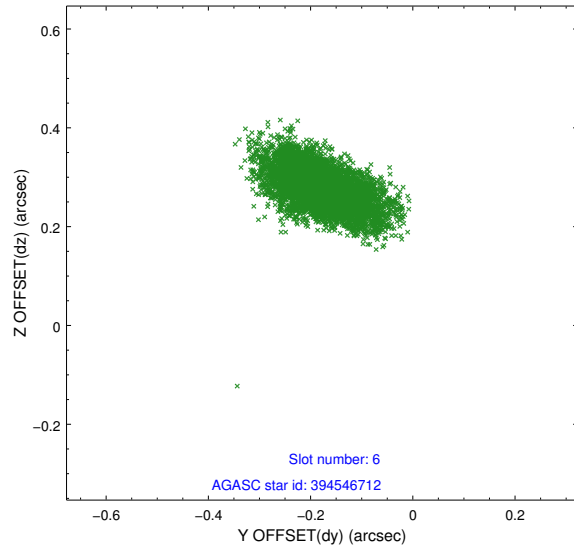
2.4.2 Slot 4



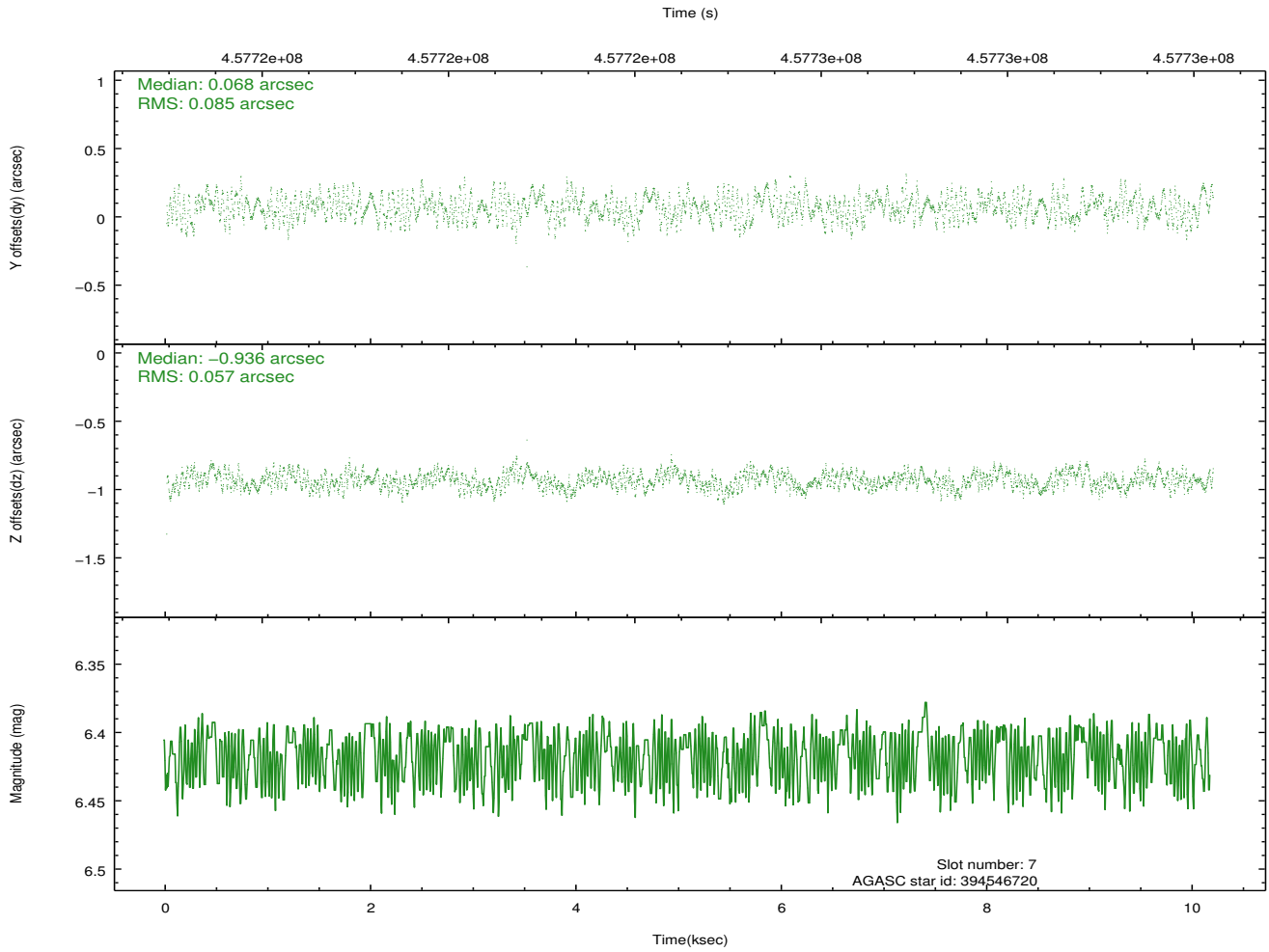
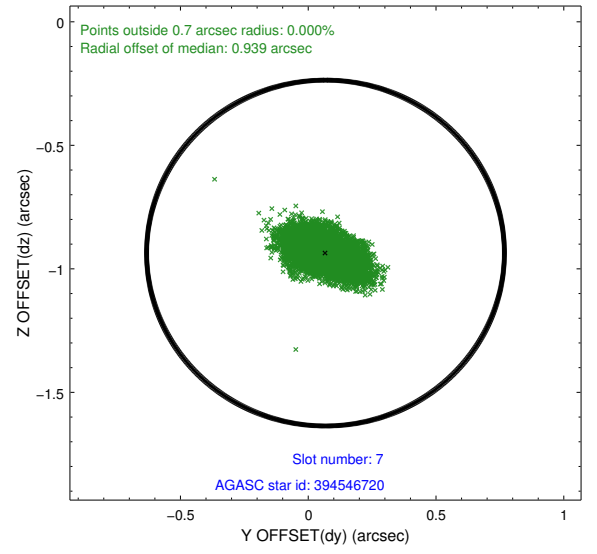
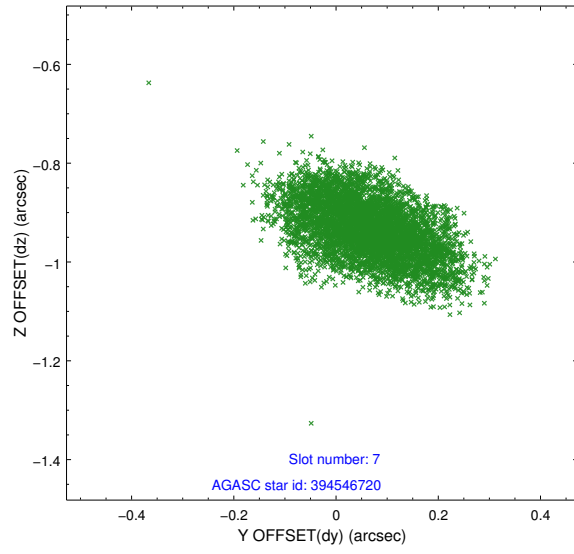
2.4.3 Slot 5



2.4.4 Slot 6

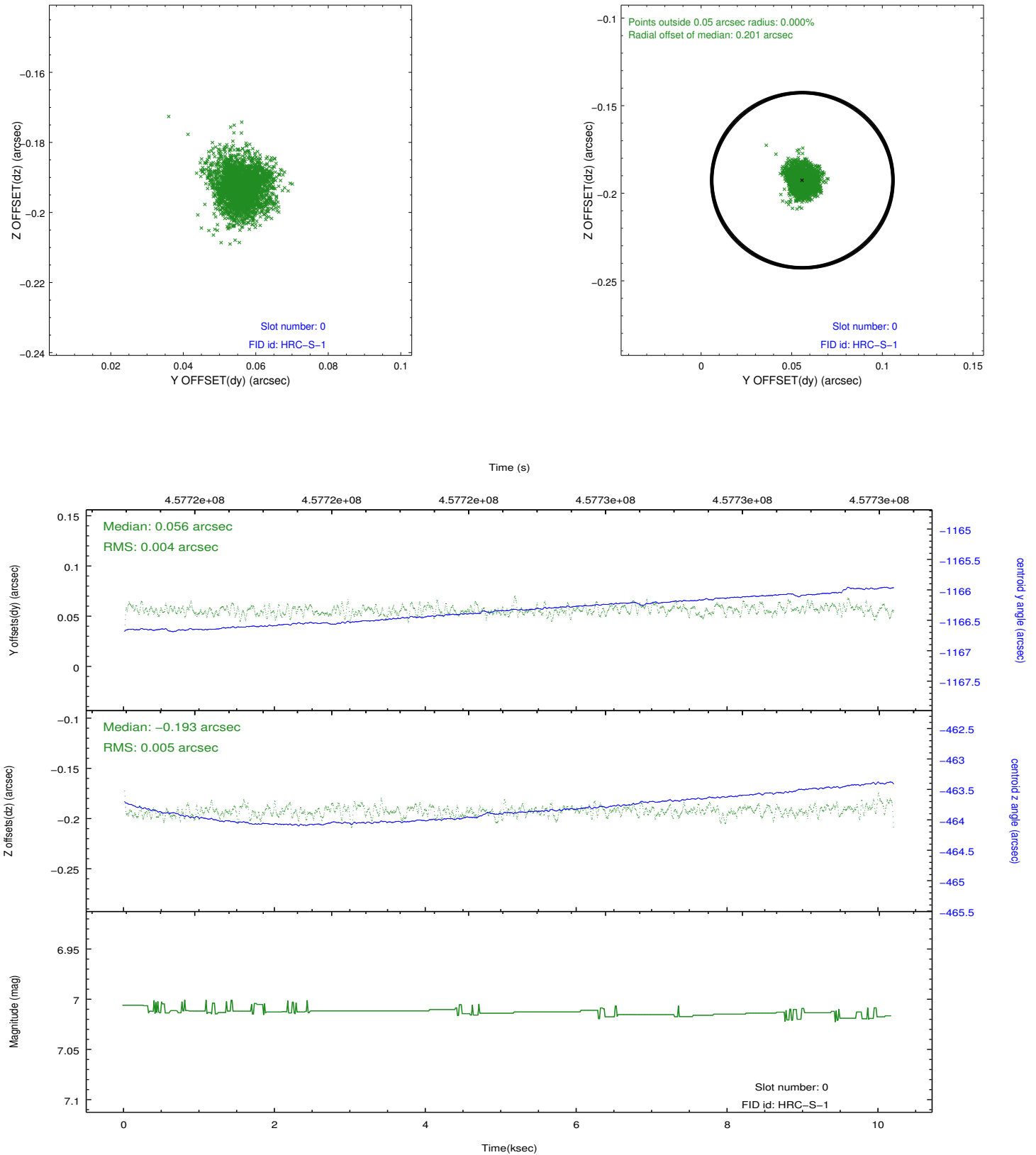


2.4.5 Slot 7

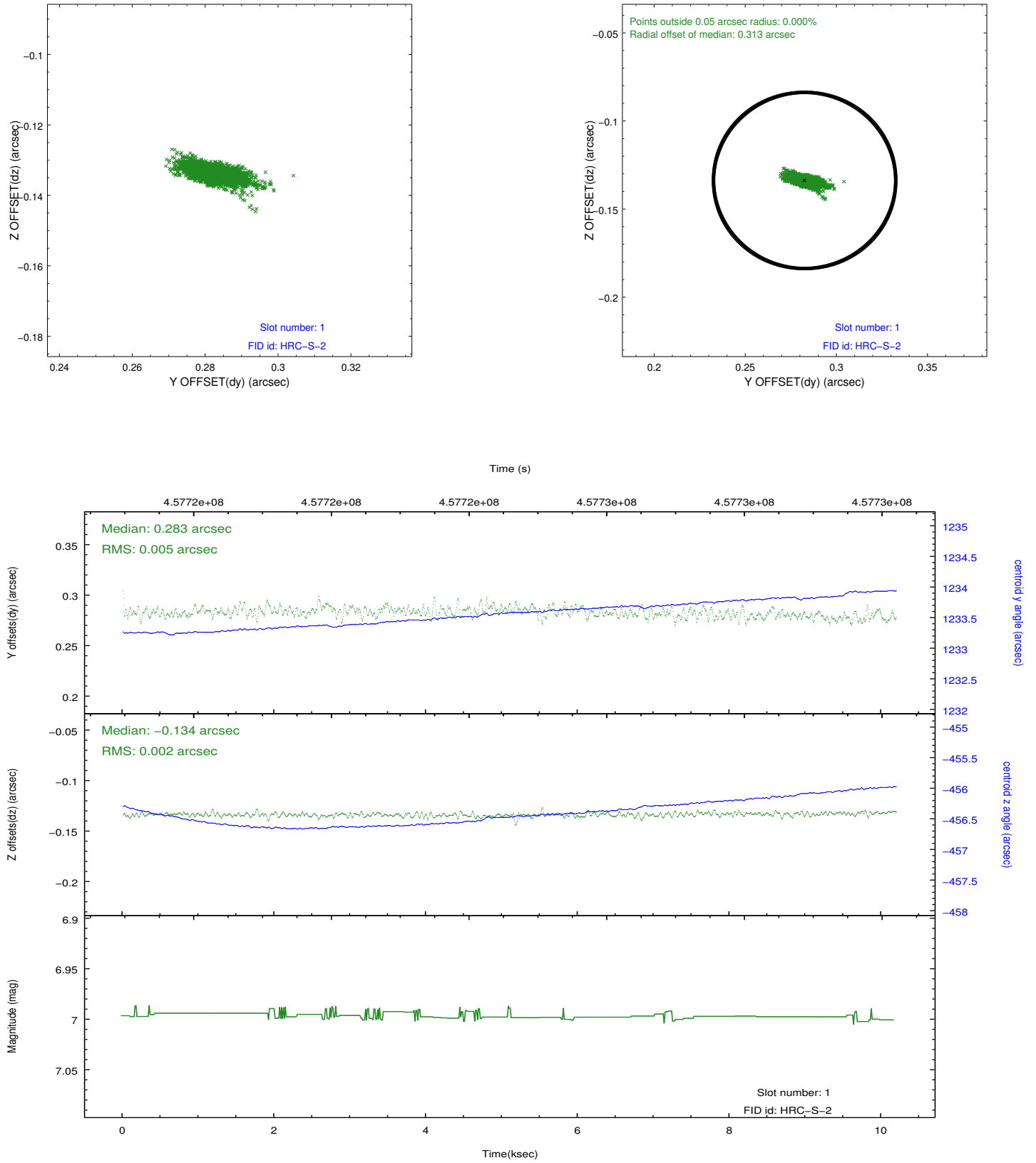


2.5 FID Slots

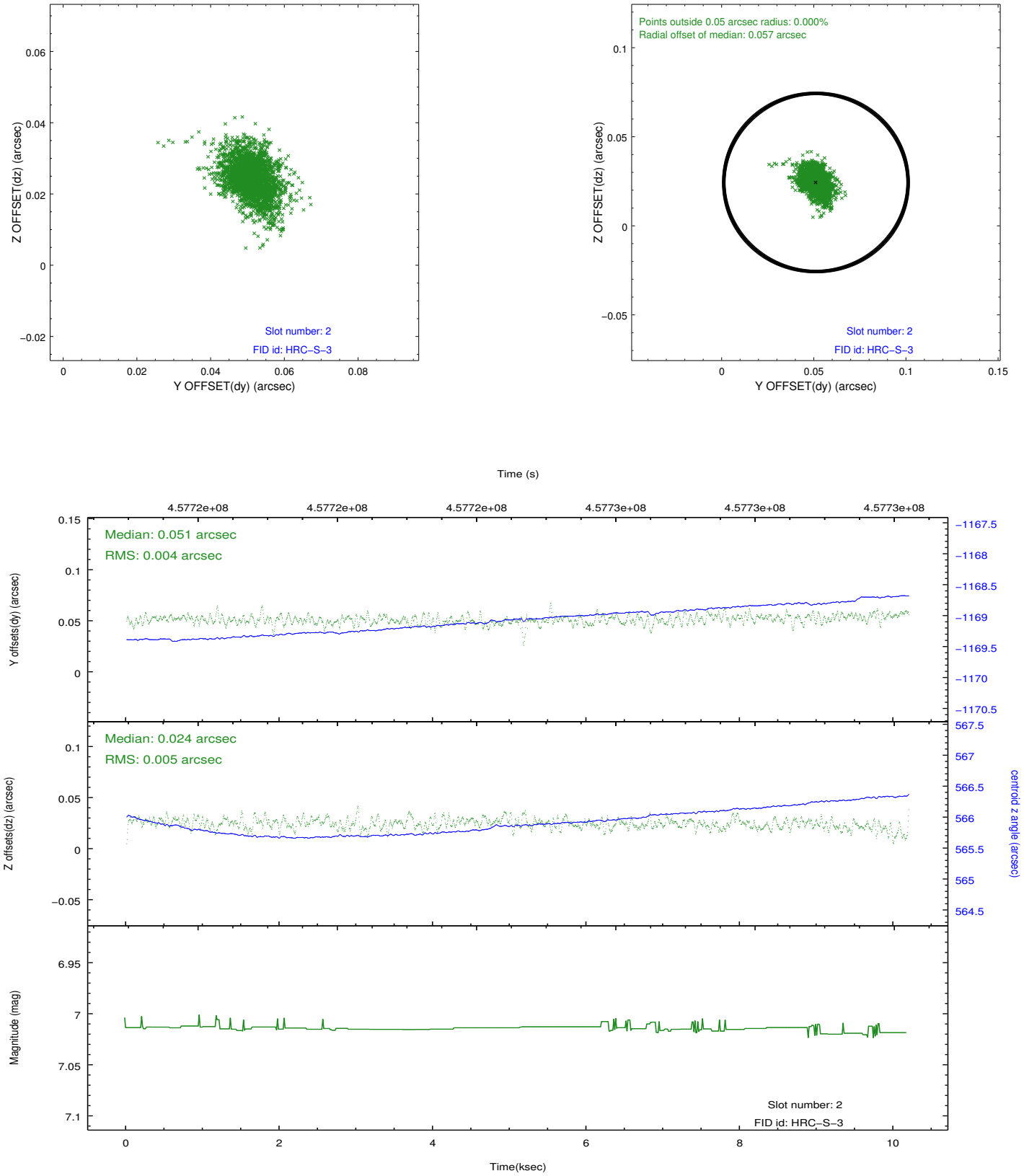
2.5.1 Slot 0



2.5.2 Slot 1

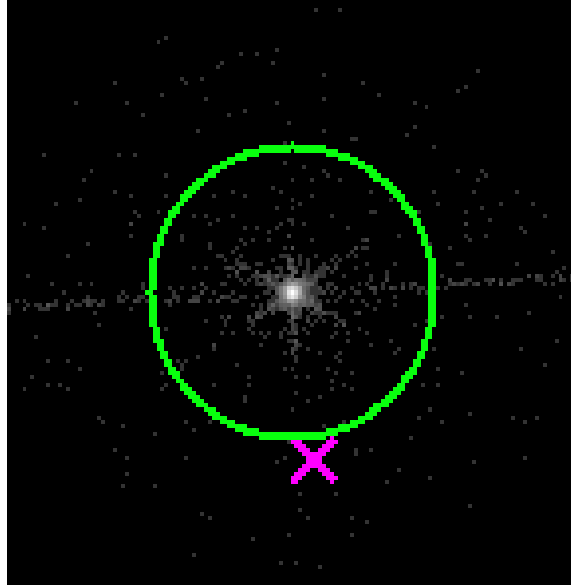


2.5.3 Slot 2

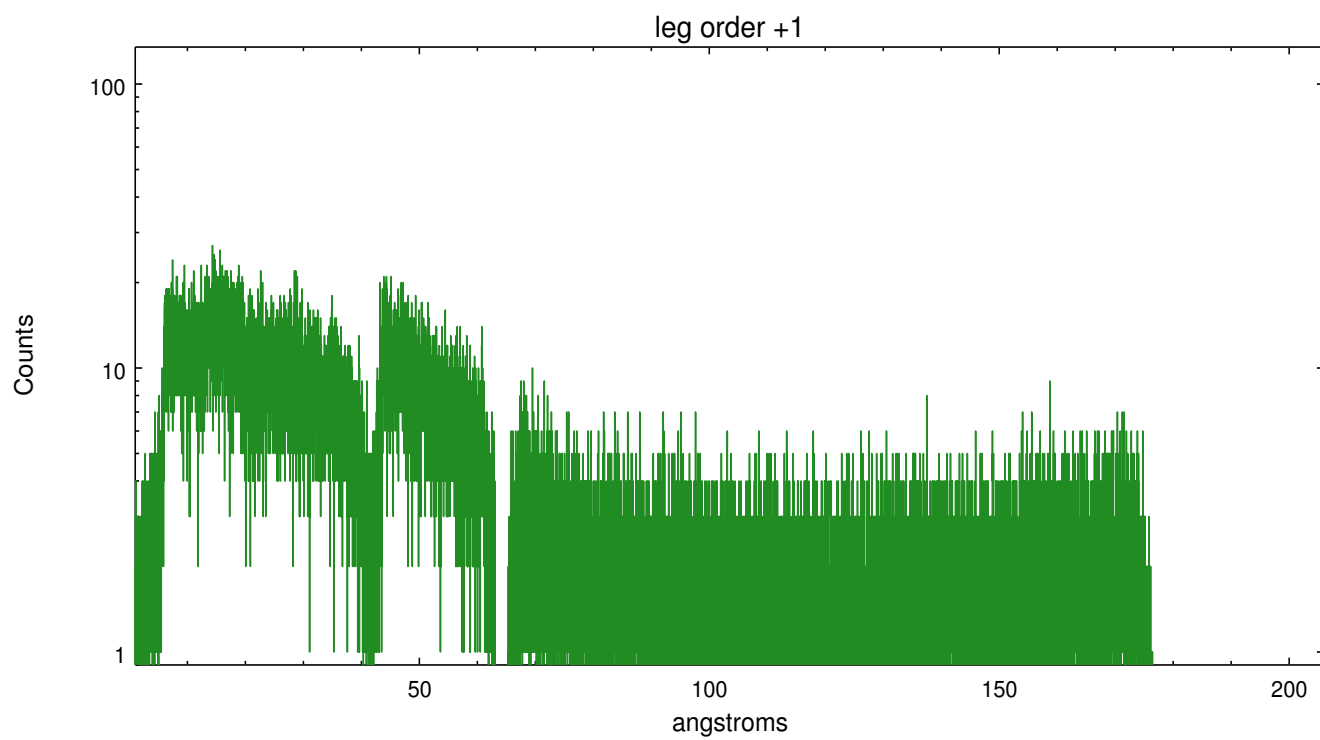
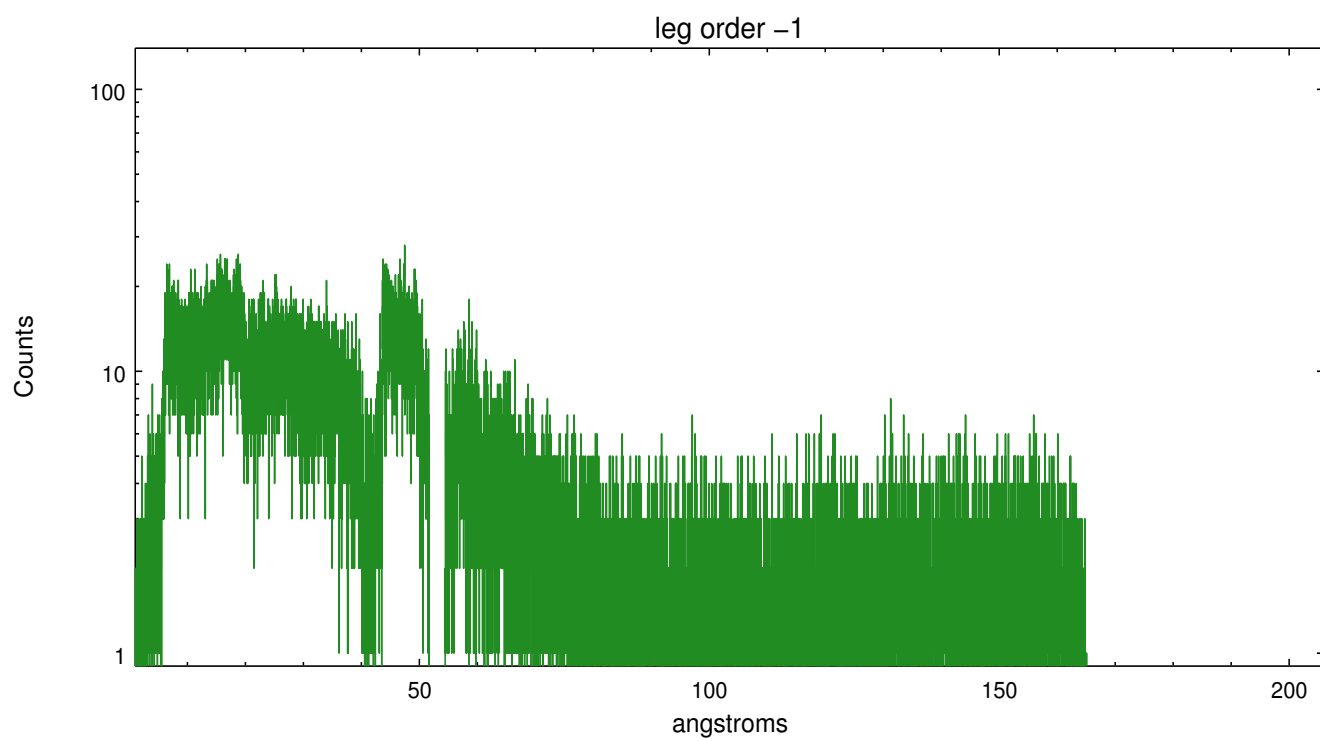


3 Gratings

3.1 LETG Arm



LETG Zero Order



A Summary

A.1 Status

V&V Scientist	Joy Nichols
V&V Date (YYYY-MM-DD)	2012.08.10
V&V Edition	1
V&V Disposition and Status	OK
V&V Charge Time	10.013481784344

A.2 Comments