

# V&V Reference Report

## L2 ASCDS Version : 8.4.5

Observation 10669 - L2 Version 2  
Chandra X-Ray Center

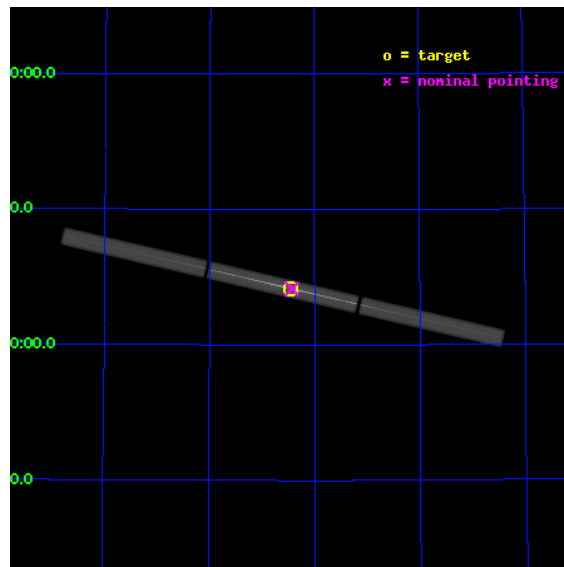
L2 Processing Date : Jun 27 2012

## Contents

<b>1</b>	<b>Front</b>	<b>2</b>
<b>2</b>	<b>OBI</b>	<b>3</b>
2.1	OBI . . . . .	3
2.1.1	Images . . . . .	3
2.1.2	Parameters . . . . .	4
2.1.3	Events . . . . .	4
2.2	Compared Parameters . . . . .	5
2.3	Aspect . . . . .	6
2.4	Star Slots . . . . .	9
2.4.1	Slot 3 . . . . .	9
2.4.2	Slot 4 . . . . .	10
2.4.3	Slot 5 . . . . .	11
2.4.4	Slot 6 . . . . .	12
2.4.5	Slot 7 . . . . .	13
2.5	FID Slots . . . . .	14
2.5.1	Slot 0 . . . . .	14
2.5.2	Slot 1 . . . . .	15
2.5.3	Slot 2 . . . . .	16
<b>3</b>	<b>Gratings</b>	<b>17</b>
3.1	LETG Arm . . . . .	17
<b>A</b>	<b>Summary</b>	<b>19</b>
A.1	Status . . . . .	19
A.2	Comments . . . . .	19

# 1 Front

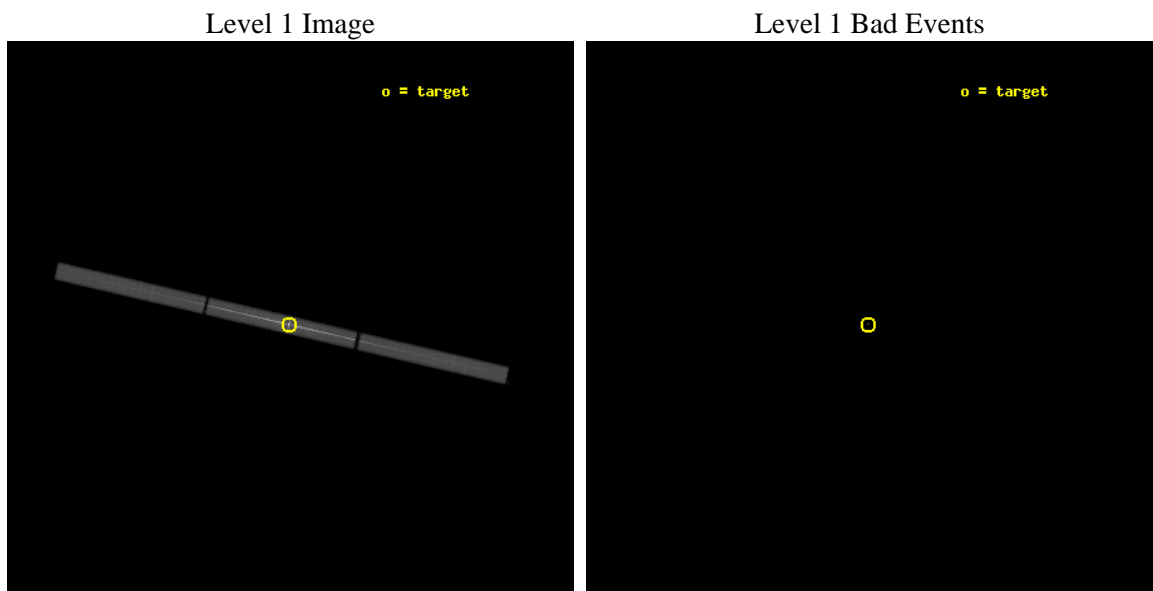
seq_num	790206	Sequence number
obs_id	10669	Observation id
title	AO-10 Calibration Observations of PKS2155-304	Proposal title
observer	Dr. CXC Calibration	Principal investigator
object	Mkn421	Source name
ra_targ	166.113333	Observer's specified target RA [deg]
dec_targ	38.208806	Observer's specified target Dec [deg]
ra_nom	166.10721017932	Nominal RA [deg]
dec_nom	38.207698874685	Nominal Dec [deg]
roll_nom	192.9030678469	Nominal Roll [deg]
revision	2	Processing version of data
ontime	10183.631766796	[s]
liveltime	10045.591231817	Ontime multiplied by DTCOR
l2events	1370358	Number of level 2 events



## 2 OBI

### 2.1 OBI

#### 2.1.1 Images



### 2.1.2 Parameters

obi_num	0	Obi number	sched_exp_time	10000.000000	[s] Scheduled observation exposure time
ascdsver	8.4.5	Processing system revision	ontime	10183.631766796	[s]
caldsver	4.5.0	&#160	l1events	1663242	Number of level 1 events
date	2012-06-27T18:09:41	Date and time of file creation			
revision	2	Processing version of data			

### 2.1.3 Events

Level 1 Events

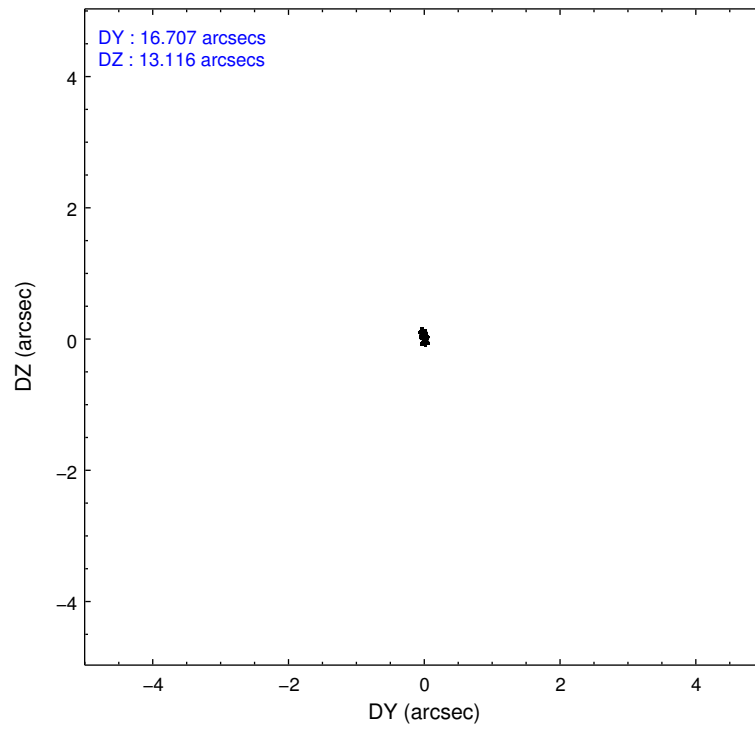
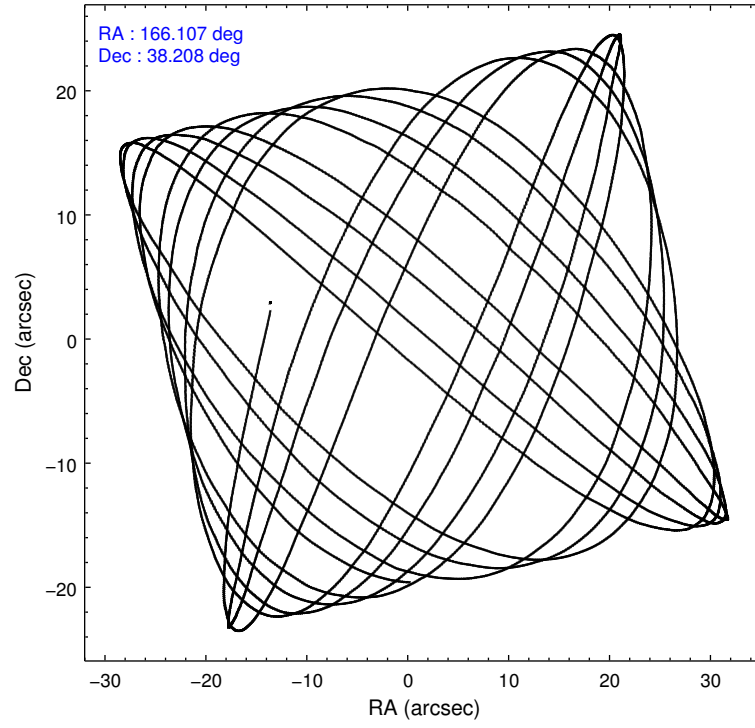
	<b>segment 1</b>	<b>segment 2</b>	<b>segment 3</b>
level 1 events	399823	853811	409608
rejected events	10799	17567	10875
rejected %	2%	2%	2%

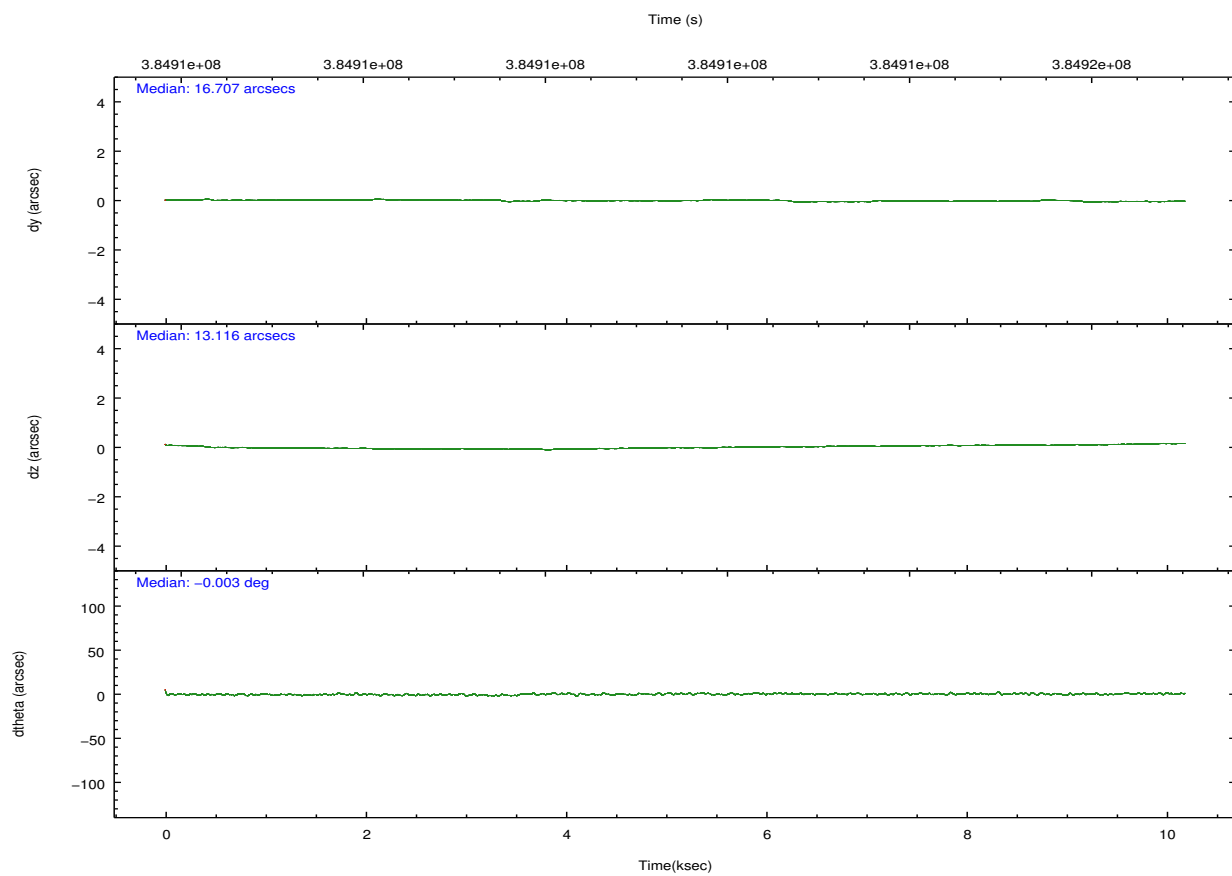
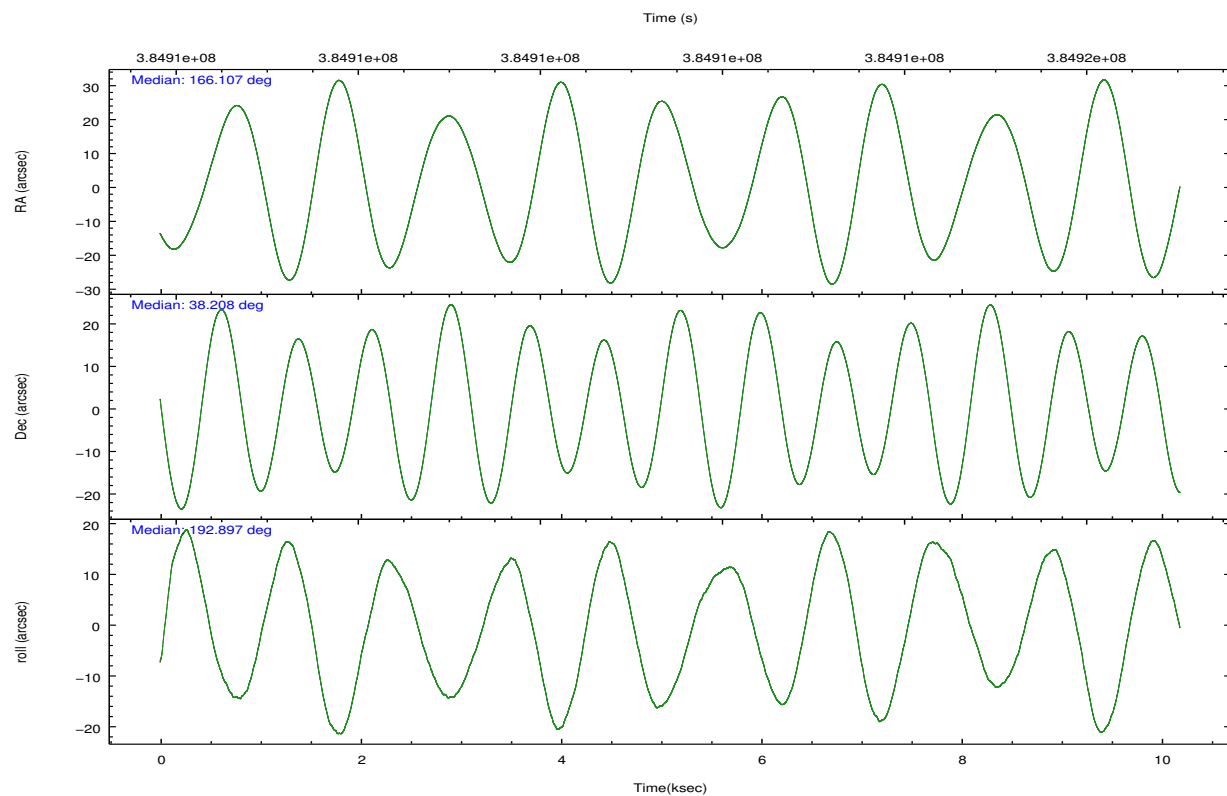


## 2.2 Compared Parameters

Parameter	Planned	Actual	Parameter	Planned	Actual
Instrument	HRC	HRC	Obspar format version number	7	7
Detector	HRC-S	HRC-S	Obspar file type	PREDICTED	ACTUAL
Grating	LETG	LETG	Obspar update status	NONE	UPDATED
Data mode	OBSERVING	OBSERVING			
Observation mode	POINTING	POINTING			
[deg] Pointing RA	166.132907	166.1072101793173			
[deg] Pointing Dec	38.228379	38.20769887468472			
[deg] Pointing Roll	192.819829	192.9030678469005			
[mm] SIM focus pos	-1.429586	-1.428180813131781			
[mm] SIM defocus	0.1037507710433287	0.1051558262725154			
[mm] SIM translation stage pos	250.455976	250.466033080201			
[mm] SIM translation stage offset	0	-0.01005468664627074			
[s] Observation start time (MET)	384906511.184000	384906045.11404			
Observation start date	2010-03-13T22:27:25	2010-03-13T22:20:45			
[s] Observation end time (MET)	384916511.184000	384916772.76458			
Observation end date	2010-03-14T01:14:05	2010-03-14T01:19:32			

## 2.3 Aspect



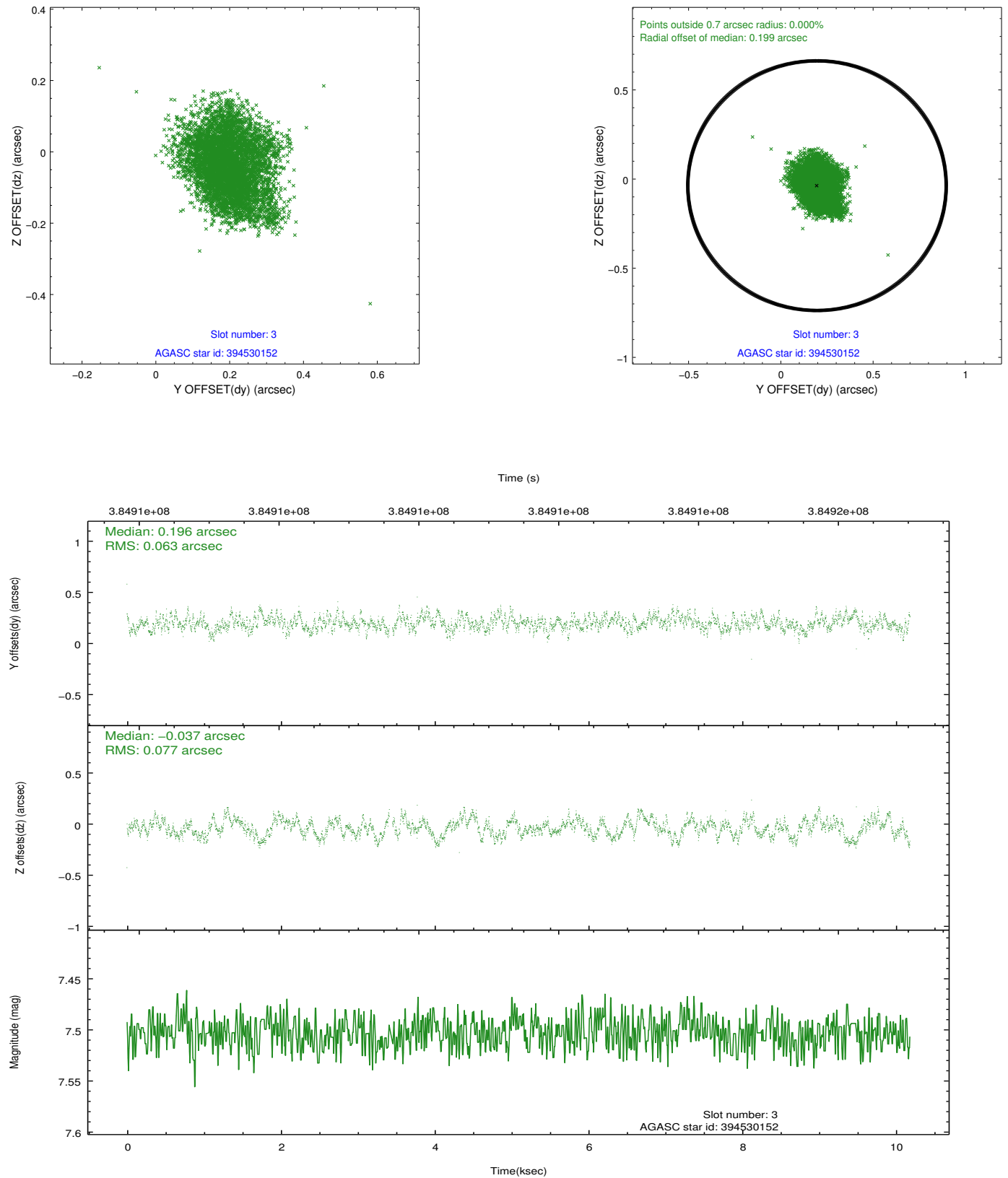


### Slot Statistics

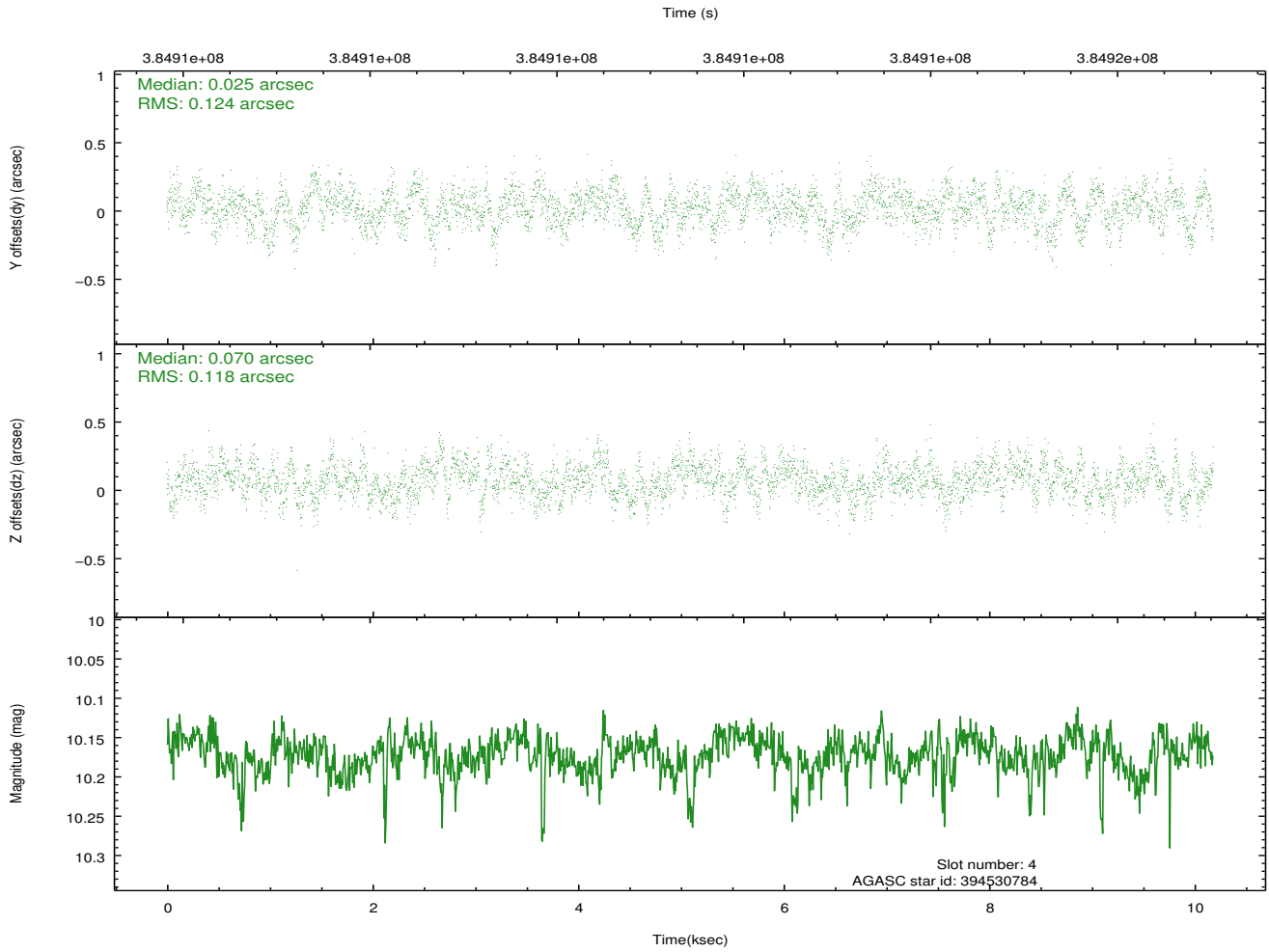
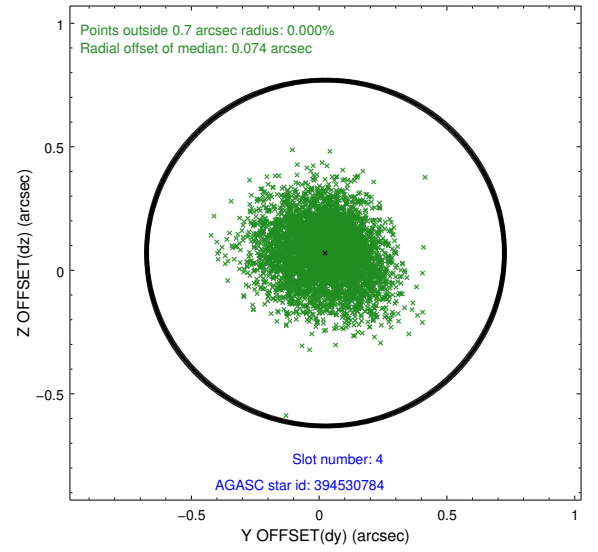
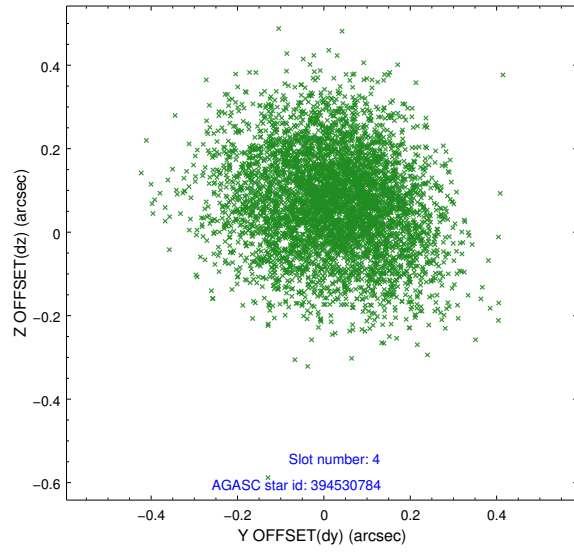
slot	status	id	mag	n_pts	med_dy	med_dz	dr1	dr2	ra	dec	mean_y	mean_z
0	FID	HRC-S-2	6.98	2485	0.207	-0.076	0.009	0.015	0.000000	0.000000	1228.64	-454.51
1	FID	HRC-S-3	7.02	2485	-0.041	-0.068	0.006	0.010	0.000000	0.000000	-1173.50	567.51
2	FID	HRC-S-4	6.95	2485	0.239	-0.152	0.009	0.016	0.000000	0.000000	1226.79	570.37
3	GUIDE	394530152	7.50	4946	0.196	-0.037	0.107	0.170	166.075805	38.868252	-354.76	-2281.77
4	GUIDE	394530784	10.17	4948	0.025	0.070	0.184	0.293	165.569172	38.418674	1397.16	-1025.81
5	GUIDE	394543960	9.80	4967	0.078	0.015	0.137	0.232	165.802757	37.787371	1267.80	1337.94
6	GUIDE	394546712	6.62	4965	-0.251	0.185	0.095	0.145	166.451462	38.394357	-1008.72	-384.39
7	GUIDE	394528824	10.04	4955	-0.045	-0.228	0.209	0.336	165.824970	38.140431	919.62	113.66

## 2.4 Star Slots

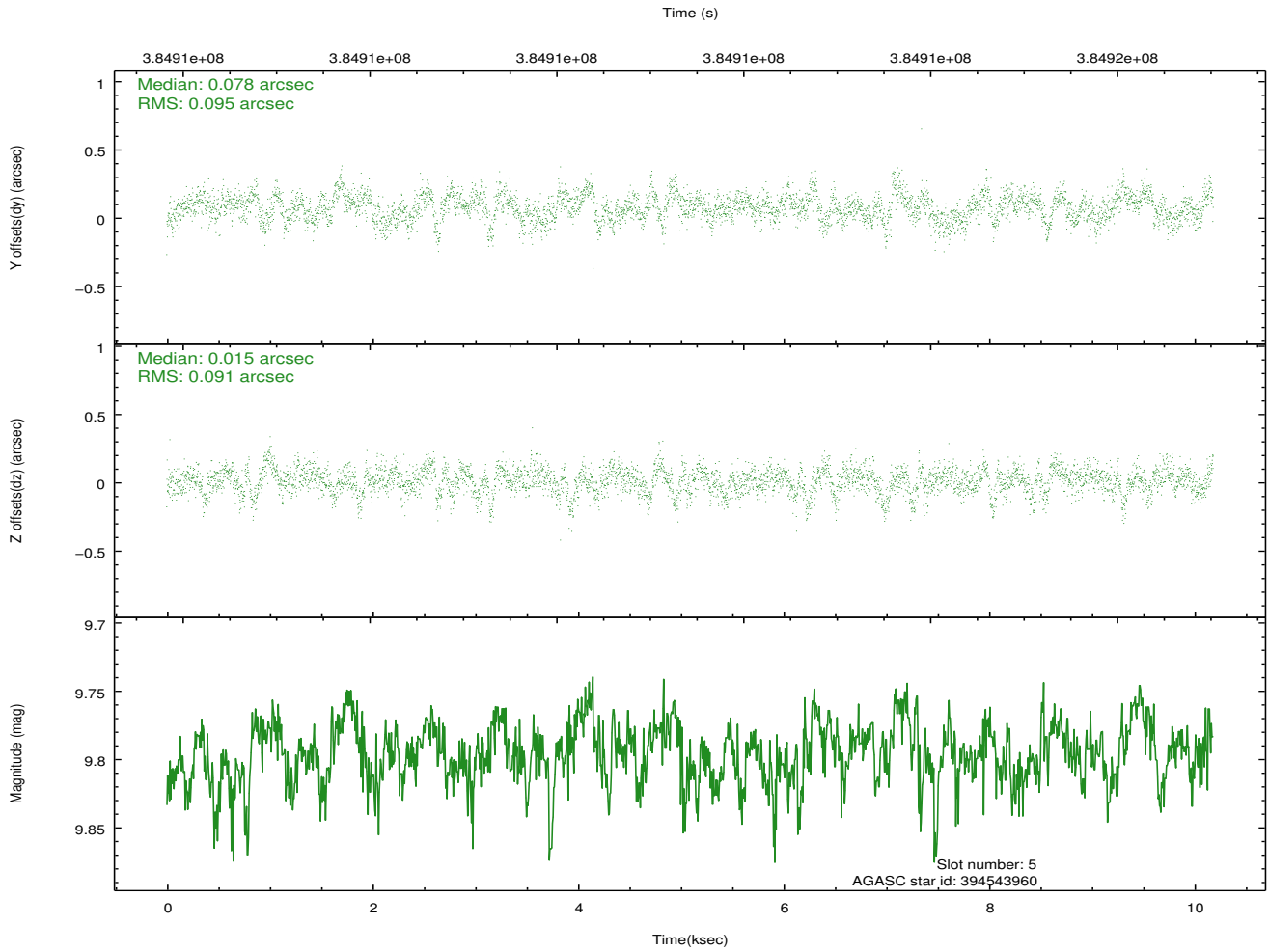
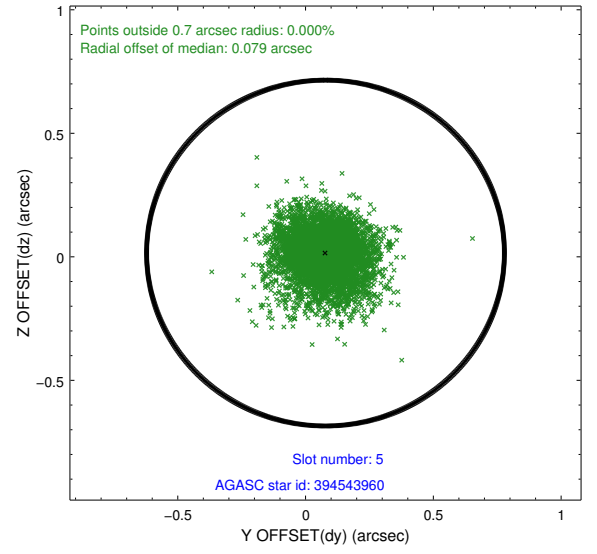
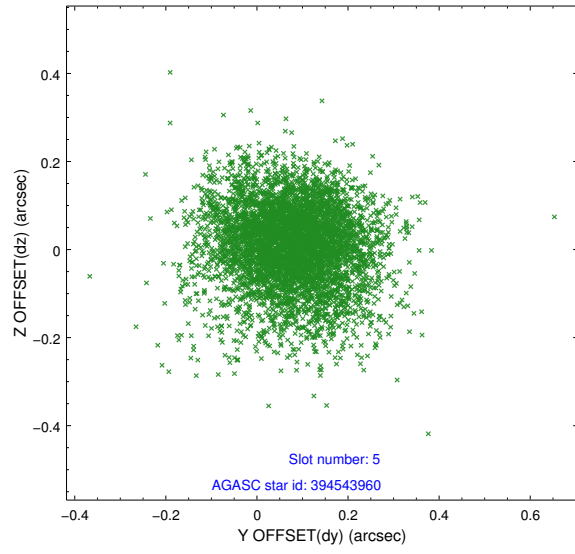
### 2.4.1 Slot 3



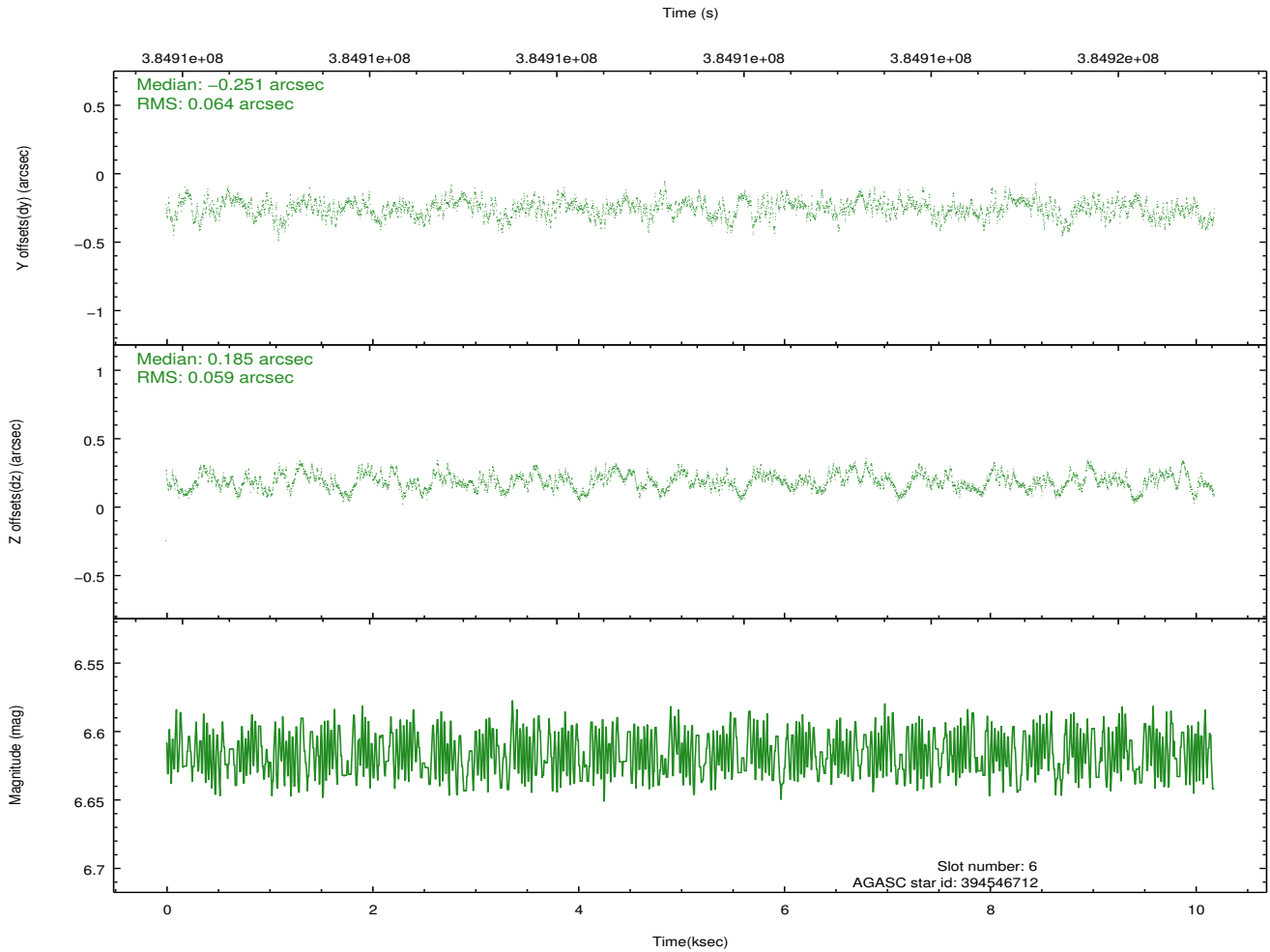
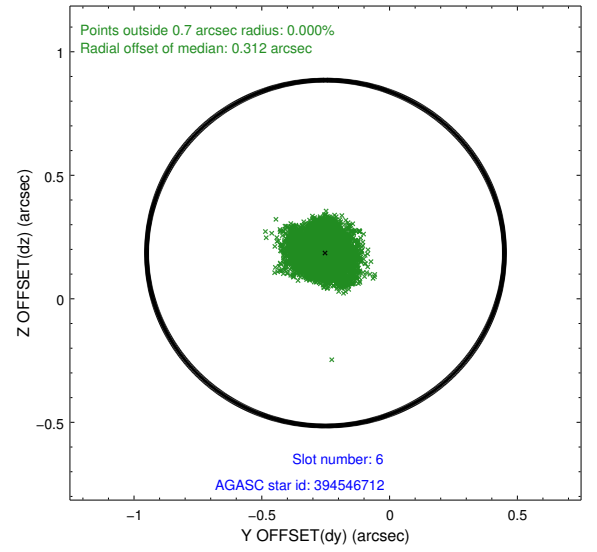
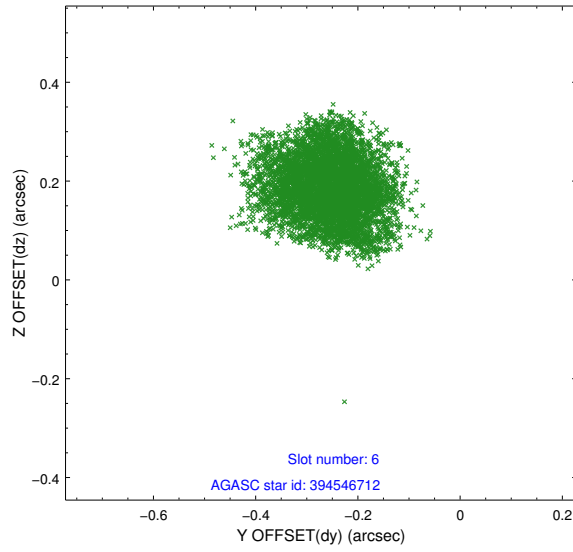
## 2.4.2 Slot 4



### 2.4.3 Slot 5

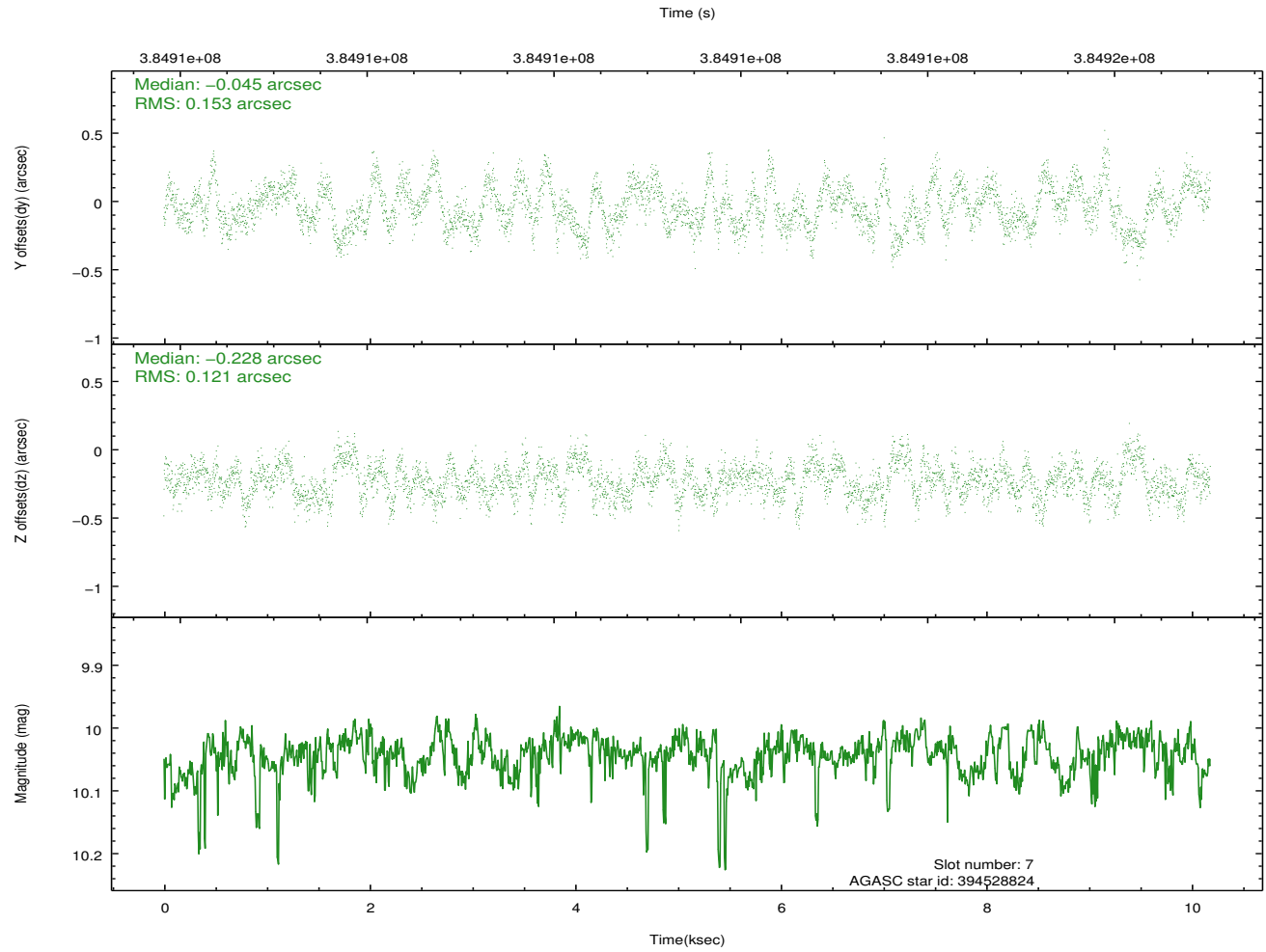
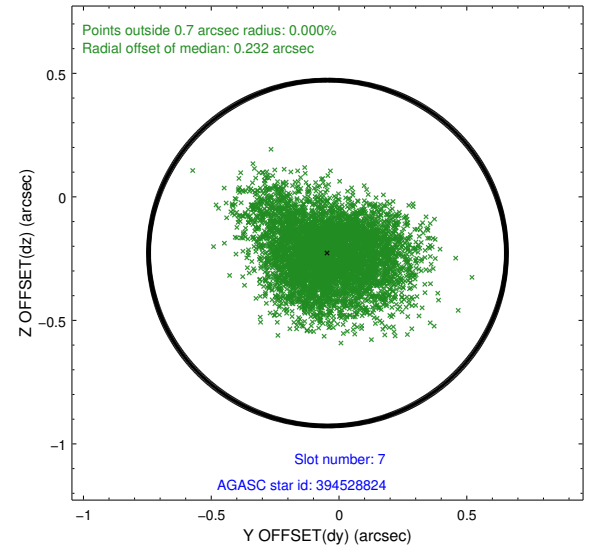
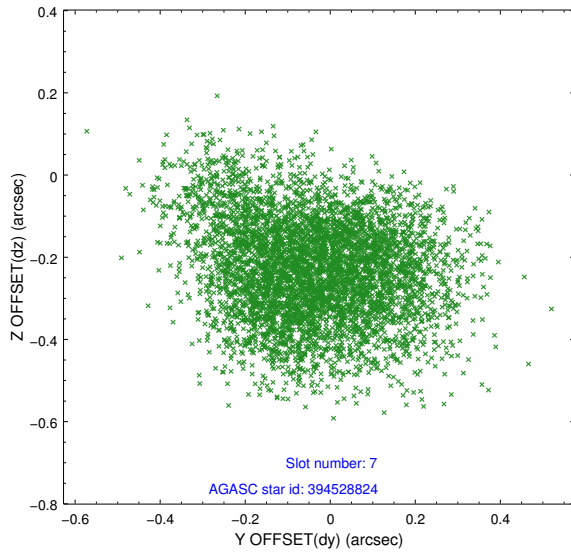


## 2.4.4 Slot 6



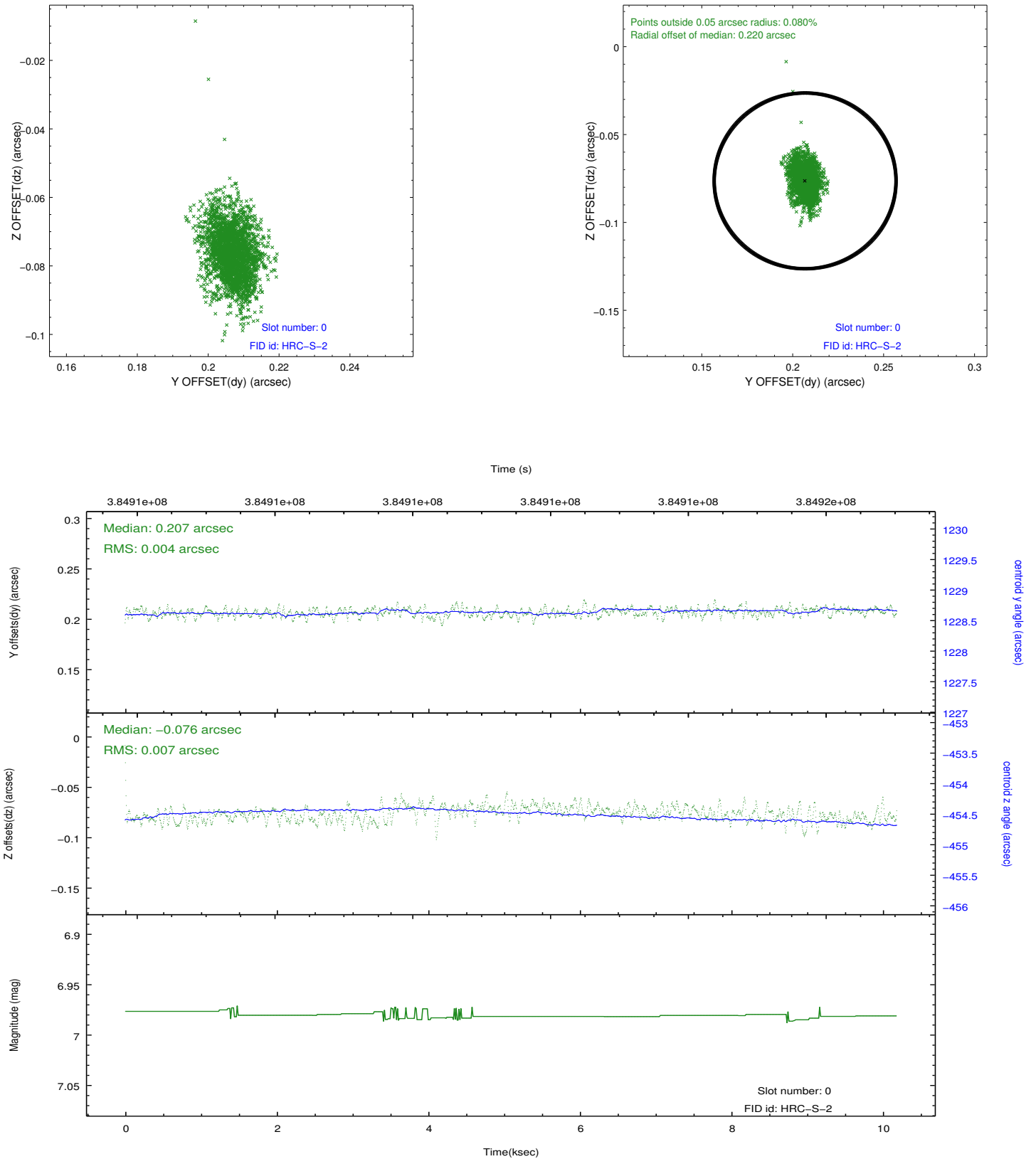


## 2.4.5 Slot 7

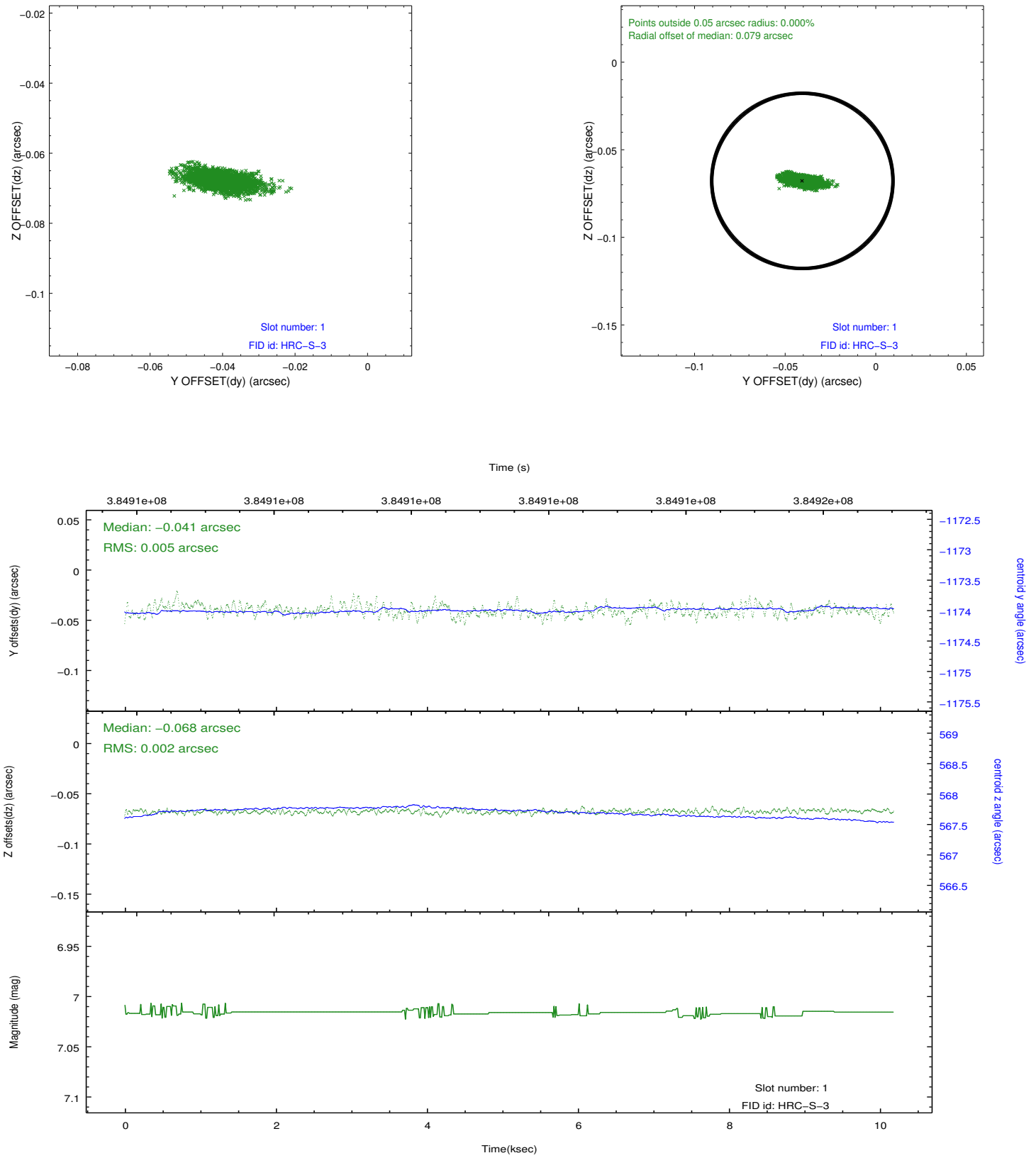


## 2.5 FID Slots

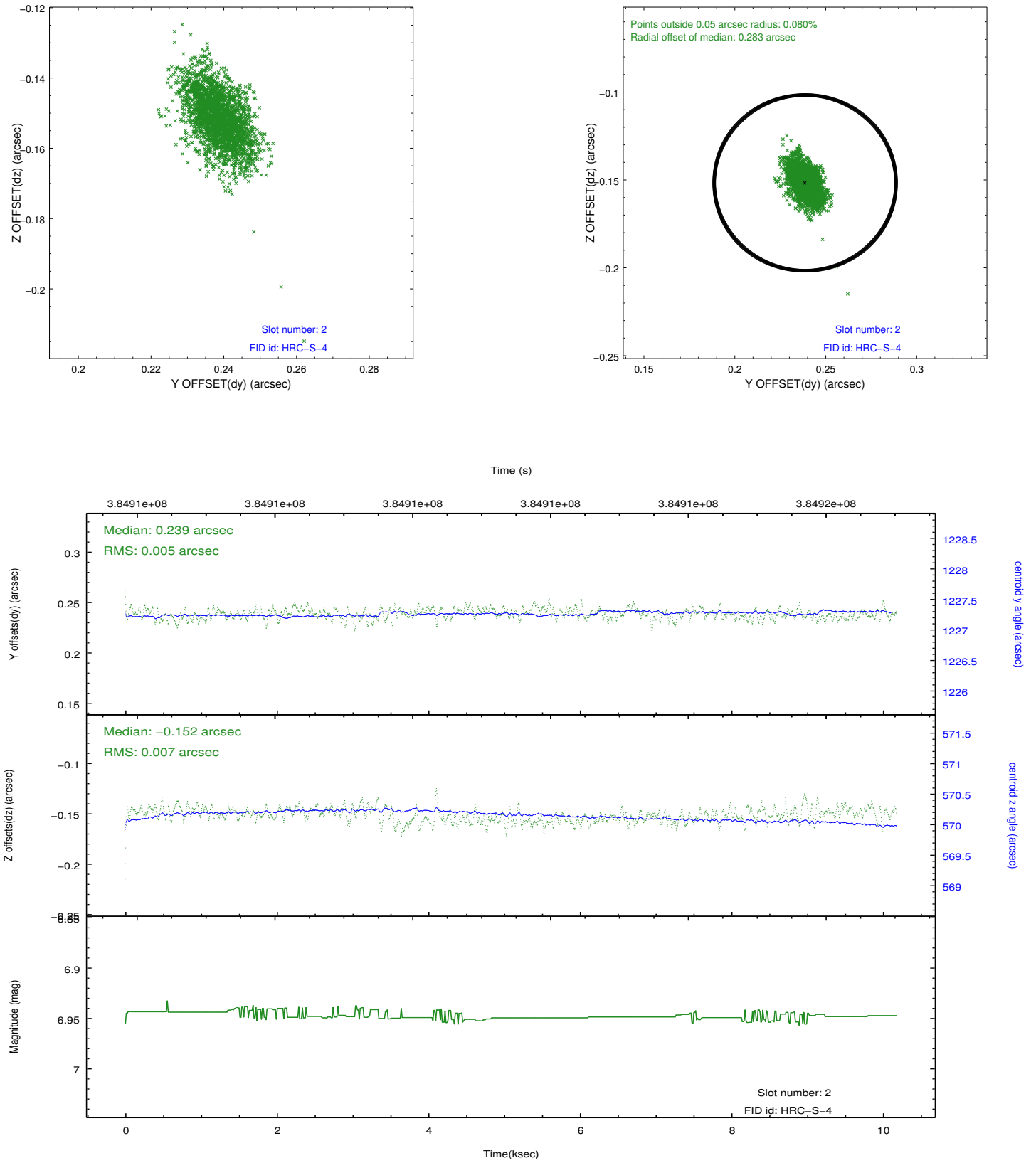
### 2.5.1 Slot 0



## 2.5.2 Slot 1

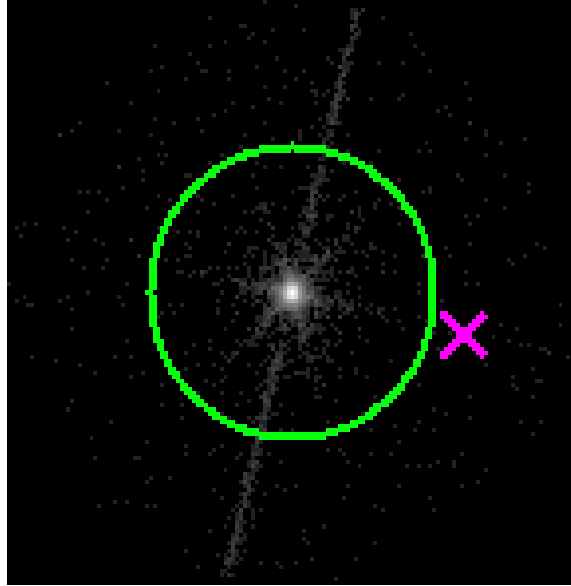


### 2.5.3 Slot 2

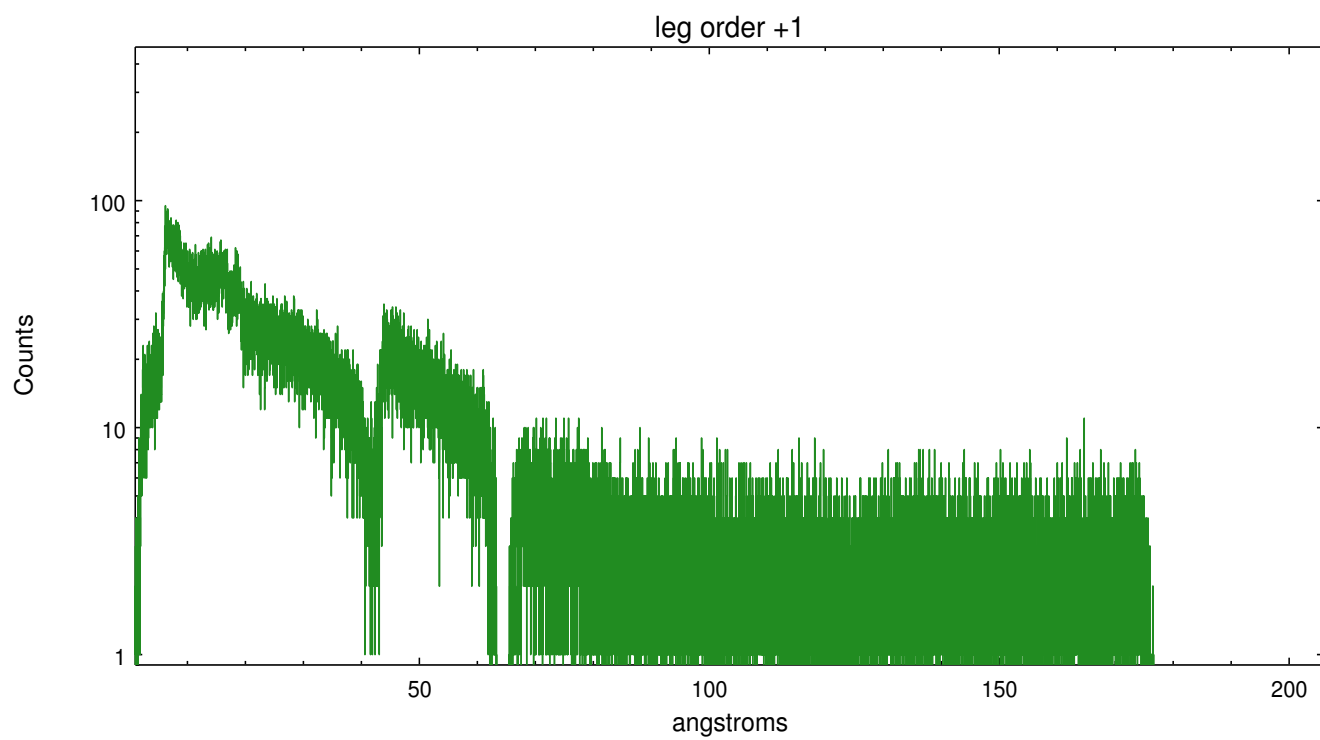
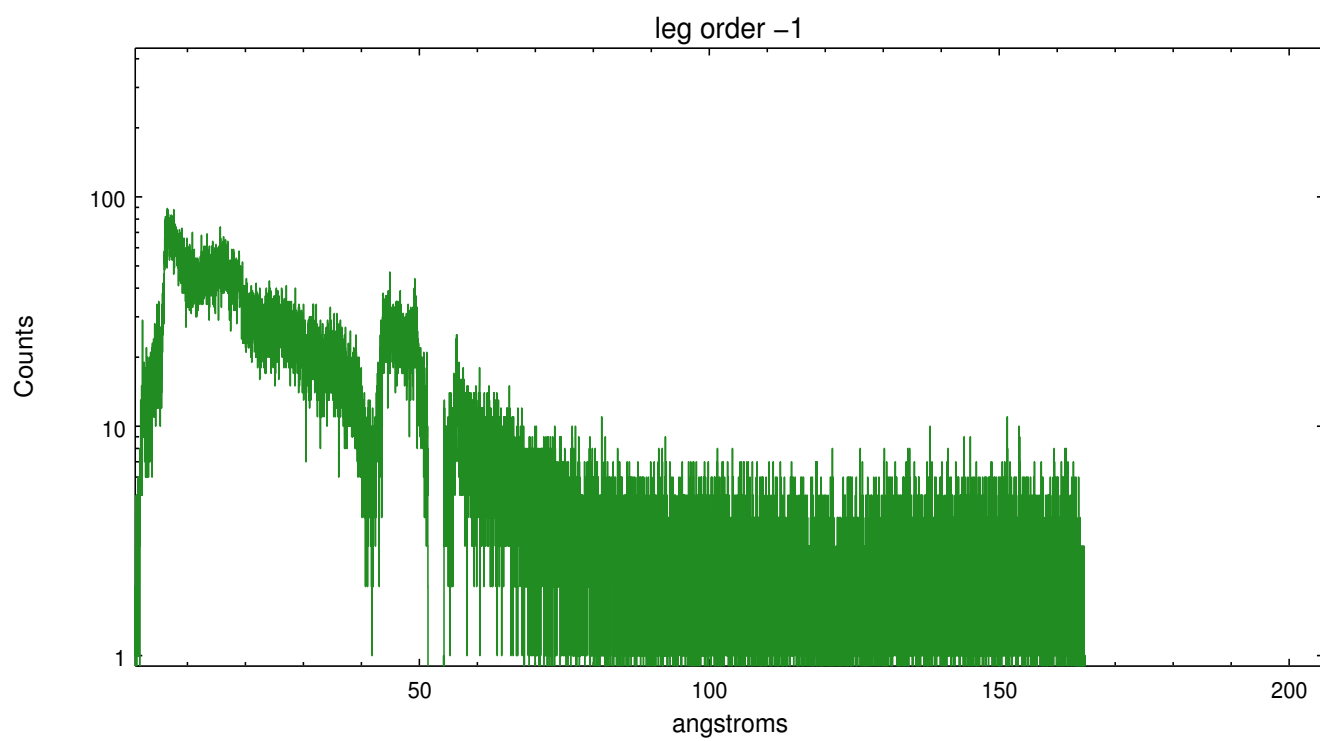


## 3 Gratings

### 3.1 LETG Arm



LETG Zero Order



## A Summary

### A.1 Status

V&V Scientist	Joy Nichols
V&V Date (YYYY-MM-DD)	2012.07.02
V&V Edition	1
V&V Disposition and Status	OK
V&V Charge Time	10.183631767094

### A.2 Comments