

V&V Reference Report

L2 ASCDS Version : 8.4.5

Observation 10618 - L2 Version 3
Chandra X-Ray Center

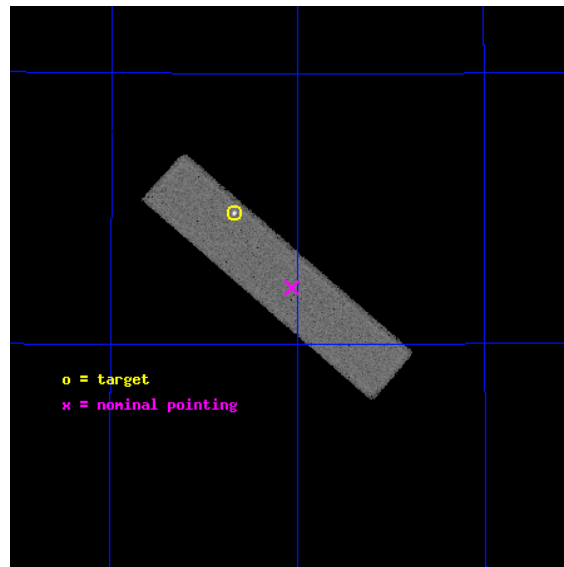
L2 Processing Date : Aug 13 2012

Contents

1	Front	2
2	OBI	3
2.1	OBI	3
2.1.1	Images	3
2.1.2	Parameters	4
2.1.3	Events	4
2.2	Compared Parameters	5
2.3	Aspect	6
2.4	Star Slots	9
2.4.1	Slot 3	9
2.4.2	Slot 4	10
2.4.3	Slot 5	11
2.4.4	Slot 6	12
2.4.5	Slot 7	13
2.5	FID Slots	14
2.5.1	Slot 0	14
2.5.2	Slot 1	15
2.5.3	Slot 2	16
A	Summary	17
A.1	Status	17
A.2	Comments	17

1 Front

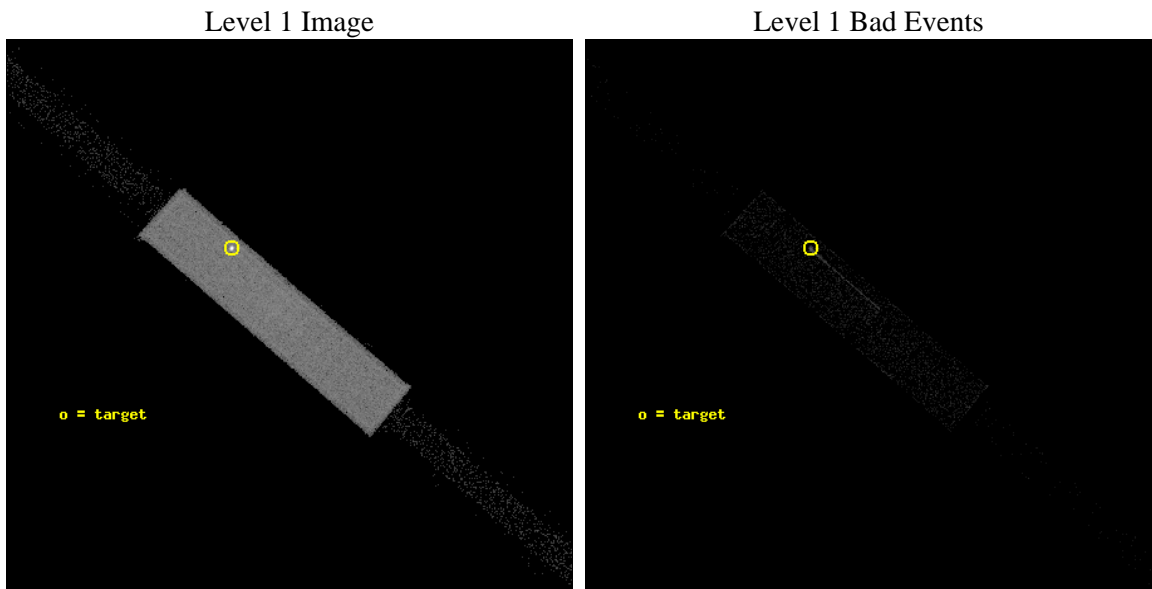
seq_num	290854	Sequence number
obs_id	10618	Observation id
title	AO-10 Calibration Observations to Monitor the Spatial Variations in the HRC-S Gain	Proposal title
observer	Dr. CXC Calibration	Principal investigator
object	ArLac	Source name
ra_targ	332.17	Observer's specified target RA [deg]
dec_targ	45.742306	Observer's specified target Dec [deg]
ra_nom	332.01548167506	Nominal RA [deg]
dec_nom	45.604854252352	Nominal Dec [deg]
roll_nom	220.67626315228	Nominal Roll [deg]
revision	3	Processing version of data
ontime	1180.0313093066	[s]
livetime	1168.6146118414	Ontime multiplied by DTCOR
l2events	82097	Number of level 2 events



2 OBI

2.1 OBI

2.1.1 Images



2.1.2 Parameters

obi_num	0	Obi number	sched_exp_time	1000.000000	[s] Scheduled observation exposure time
ascdsver	8.4.5	Processing system revision	ontime	1180.0313093066	[s]
caldsver	4.5.1.1	 	l1events	126237	Number of level 1 events
date	2012-08-13T16:25:18	Date and time of file creation			
revision	3	Processing version of data			

2.1.3 Events

Level 1 Events

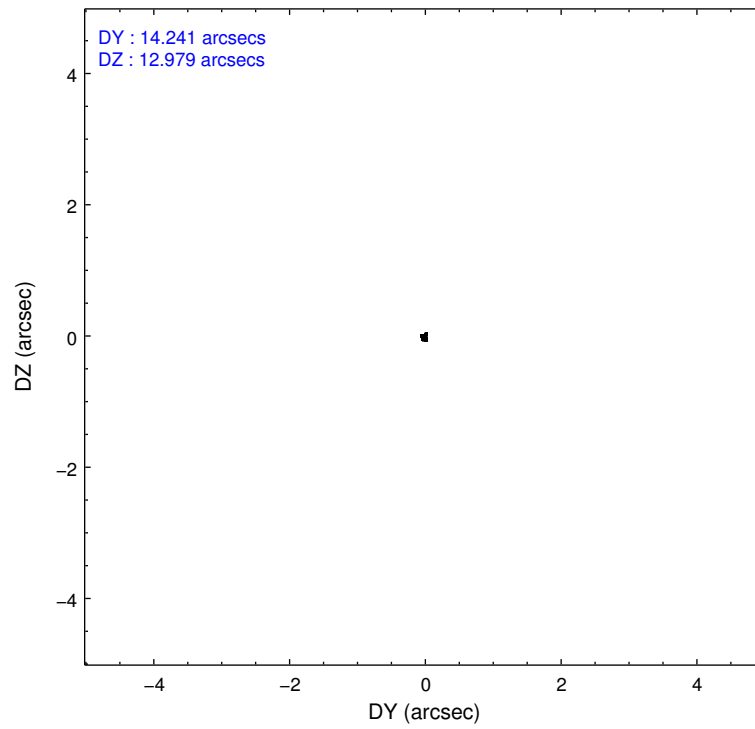
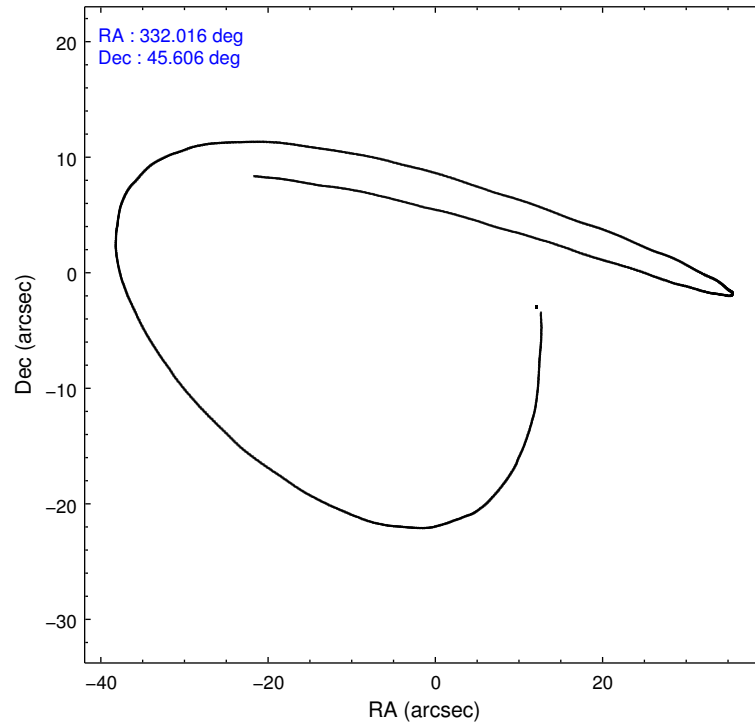
	segment 1	segment 2	segment 3
level 1 events	1156	123889	1192
rejected events	1156	26273	1192
rejected %	100%	21%	100%

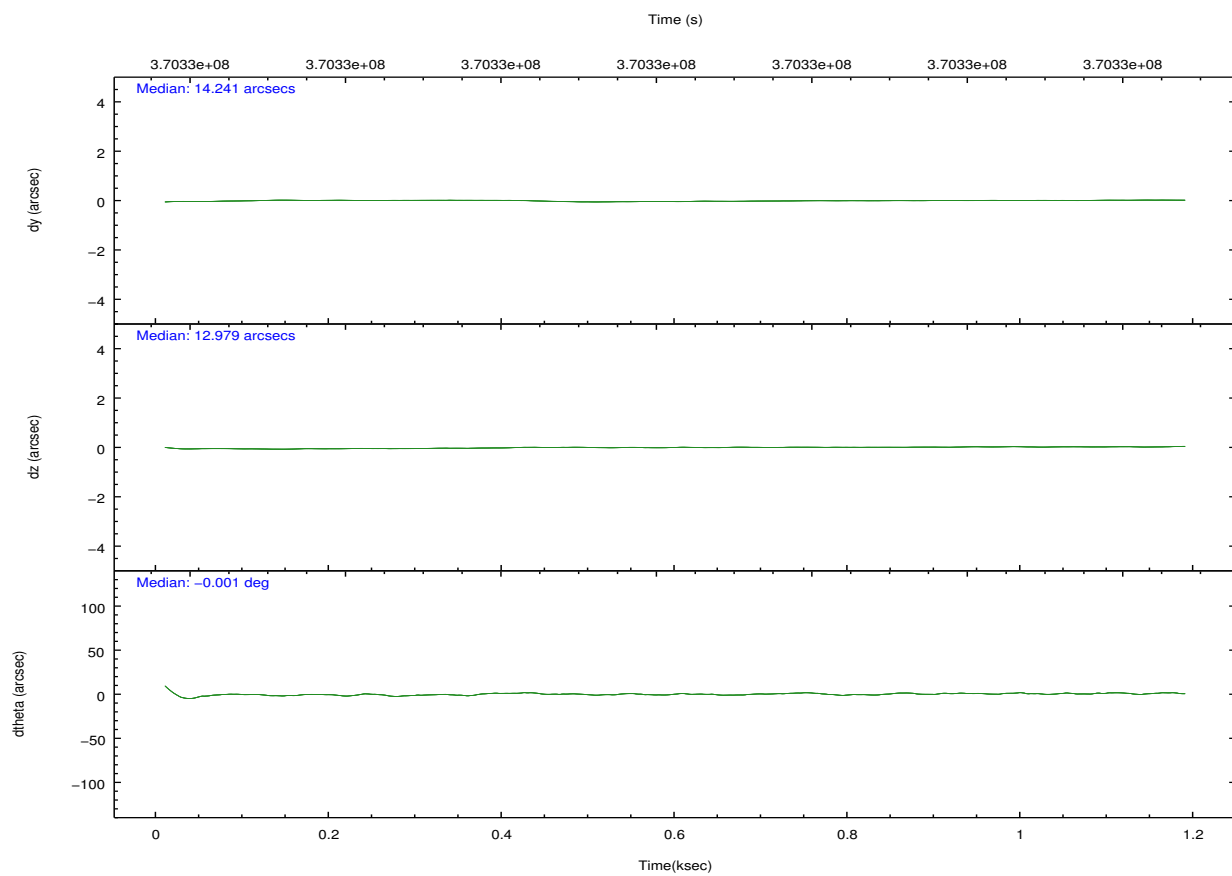
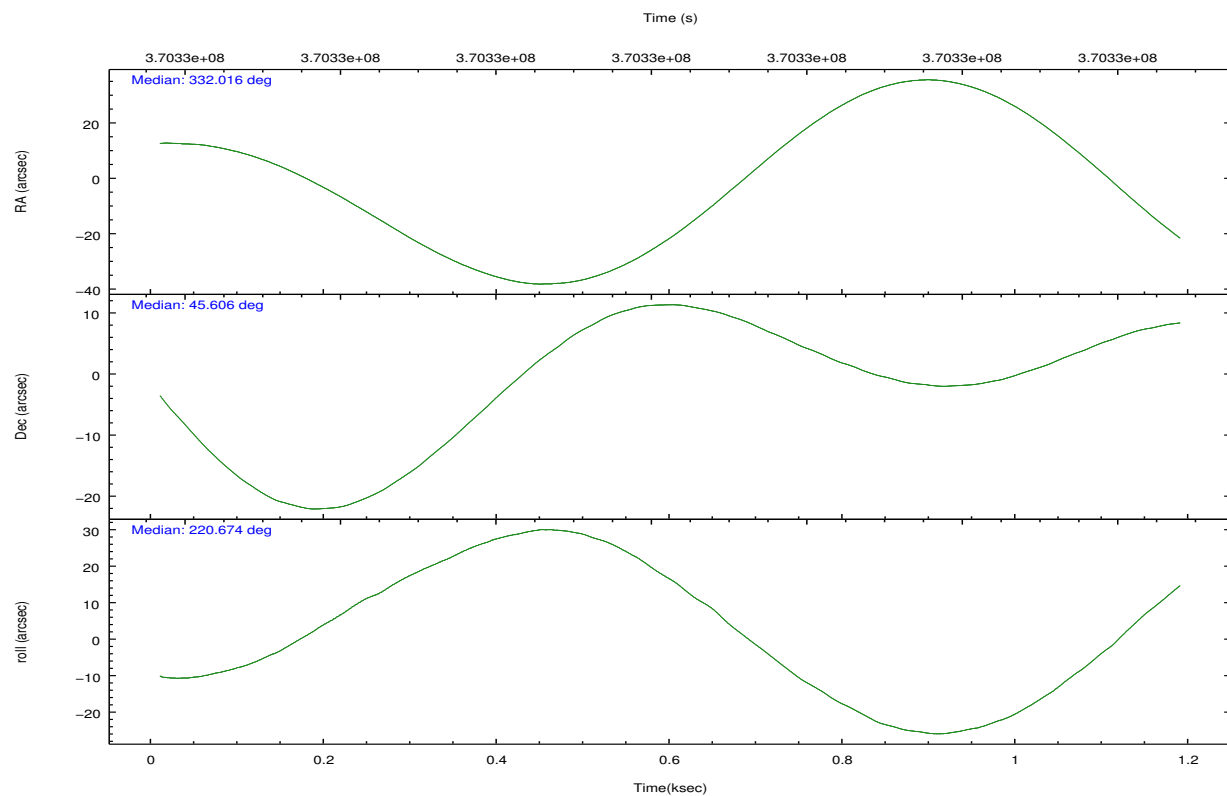
2.2 Compared Parameters

Parameter	Planned	Actual
Instrument	HRC	HRC
Detector	HRC-S	HRC-S
Grating	NONE	NONE
Data mode	OBSERVING	OBSERVING
Observation mode	POINTING	POINTING
[deg] Pointing RA	332.026194	332.0154816750629
[deg] Pointing Dec	45.633097	45.60485425235179
[deg] Pointing Roll	220.601273	220.6762631522756
[mm] SIM focus pos	-1.533336	-1.526339935833849
[mm] SIM defocus	7.710433287538843e-07	0.006996703570447904
[mm] SIM translation stage pos	250.455976	250.466033080201
[mm] SIM translation stage offset	0	-0.01005468664627074
[s] Observation start time (MET)	370331423.184000	370331047.14027
Observation start date	2009-09-26T05:49:17	2009-09-26T05:44:07
[s] Observation end time (MET)	370332423.184000	370332556.96535
Observation end date	2009-09-26T06:05:57	2009-09-26T06:09:16

Parameter	Planned	Actual
Obspar format version number	7	7
Obspar file type	PREDICTED	ACTUAL
Obspar update status	NONE	UPDATED

2.3 Aspect



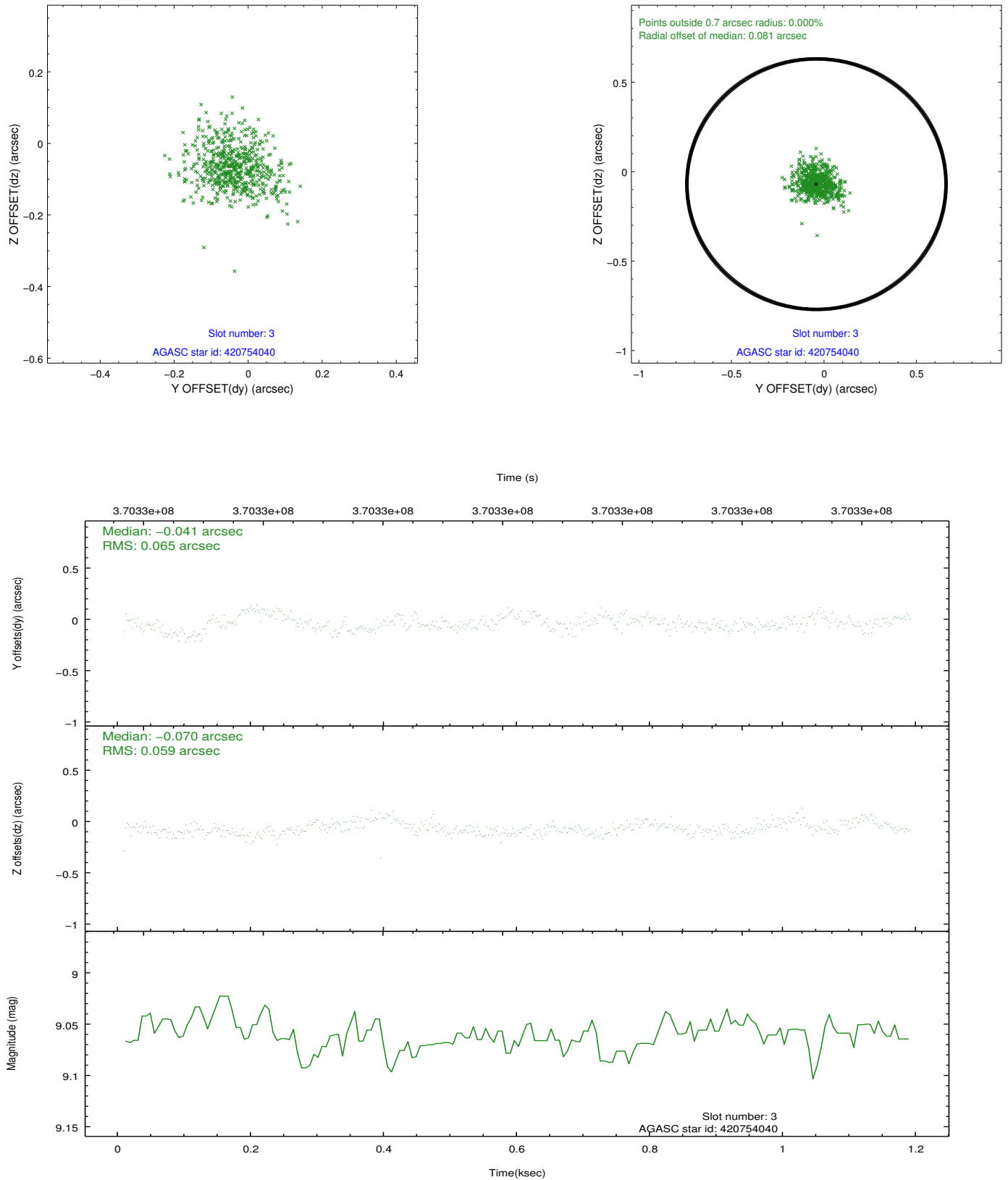


Slot Statistics

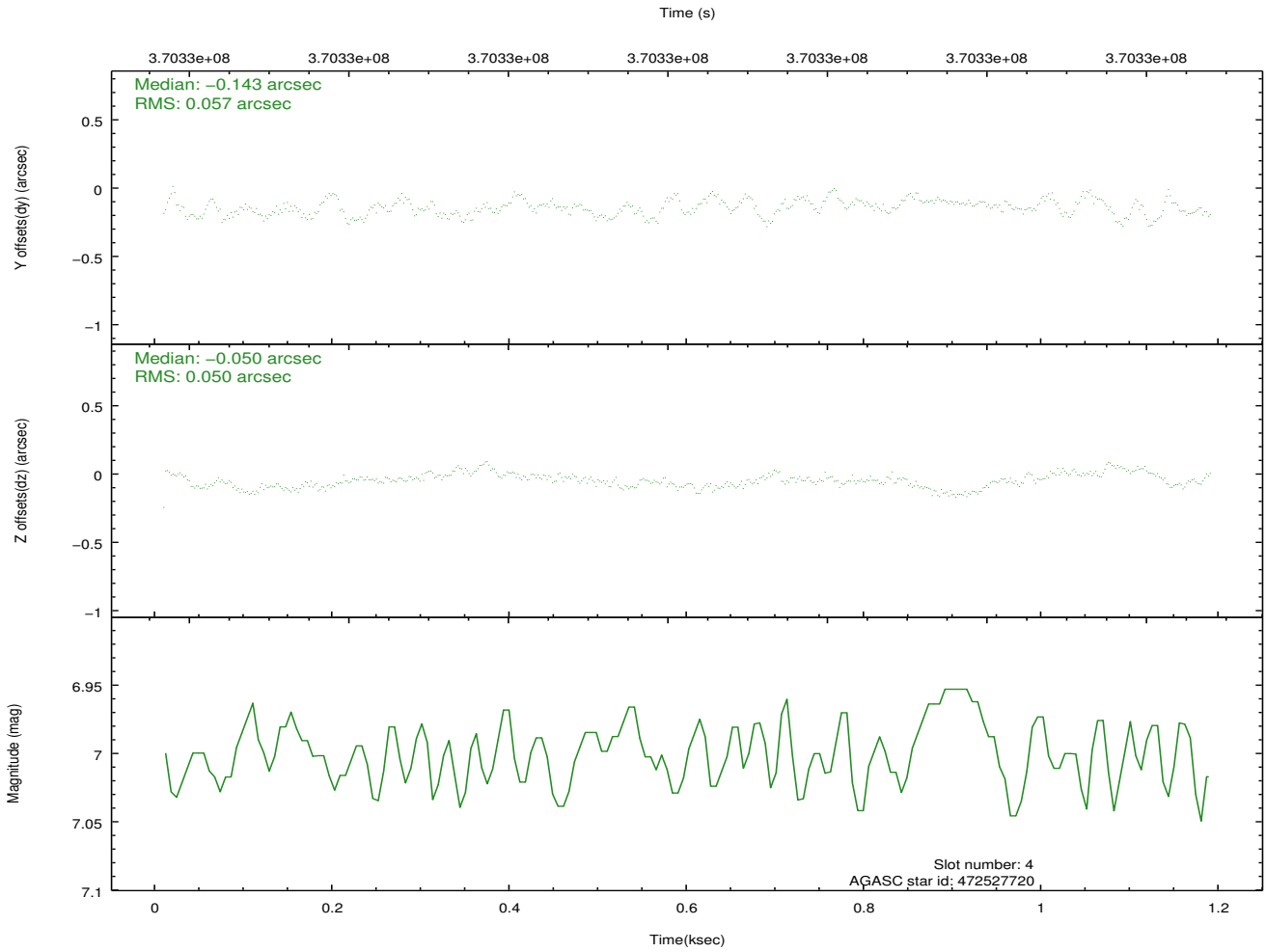
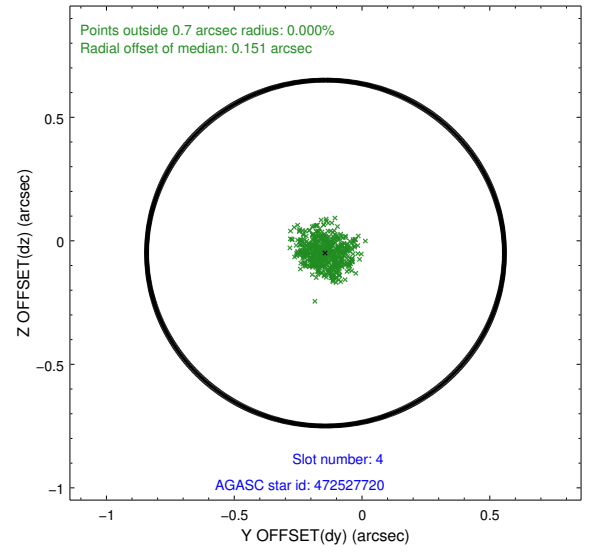
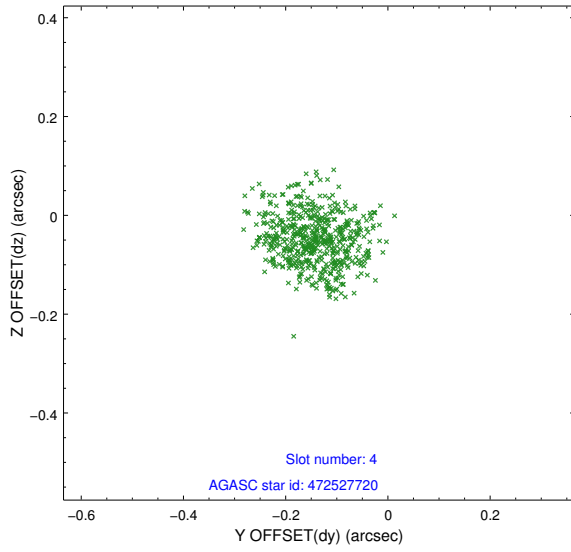
slot	status	id	mag	n_pts	med_dy	med_dz	dr1	dr2	ra	dec	mean_y	mean_z
0	FID	HRC-S-1	7.00	288	0.075	-0.157	0.007	0.011	0.000000	0.000000	-1168.64	-461.70
1	FID	HRC-S-3	6.99	288	0.050	-0.063	0.007	0.012	0.000000	0.000000	-1175.40	566.31
2	FID	HRC-S-4	6.92	288	0.263	-0.077	0.005	0.012	0.000000	0.000000	1225.75	572.32
3	GUIDE	420754040	9.06	577	-0.041	-0.070	0.094	0.154	331.917939	44.882543	1967.41	1868.92
4	GUIDE	472527720	7.00	577	-0.143	-0.050	0.084	0.126	331.460205	45.112509	2311.96	483.34
5	GUIDE	472533912	9.14	577	-0.083	0.116	0.129	0.217	331.791136	46.368695	-1276.11	-2393.64
6	GUIDE	472655152	9.43	575	-0.042	-0.078	0.114	0.180	332.504239	45.862991	-1452.49	141.37
7	GUIDE	472661712	10.03	570	0.300	0.089	0.156	0.253	331.914954	46.059715	-790.24	-1350.12

2.4 Star Slots

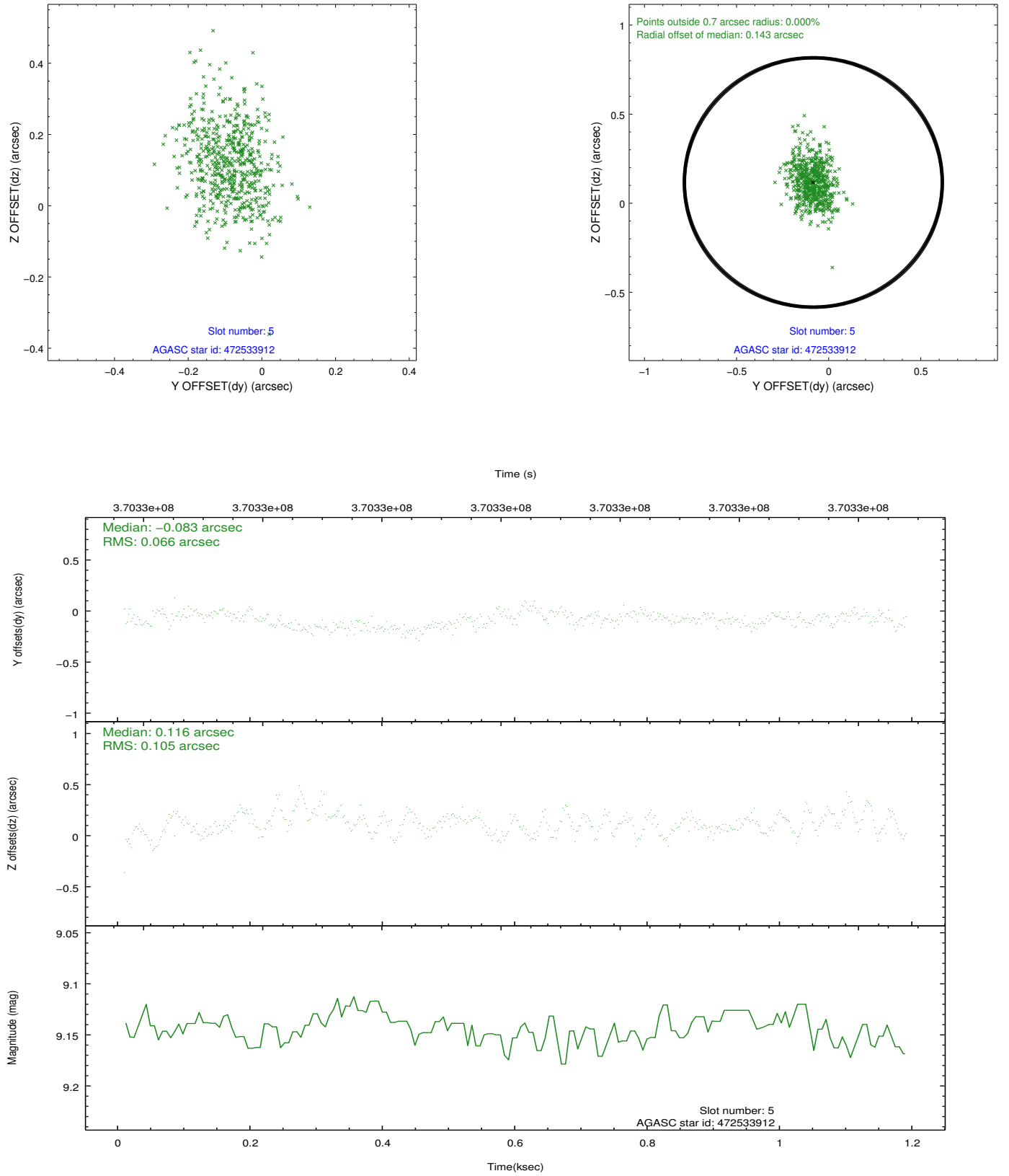
2.4.1 Slot 3



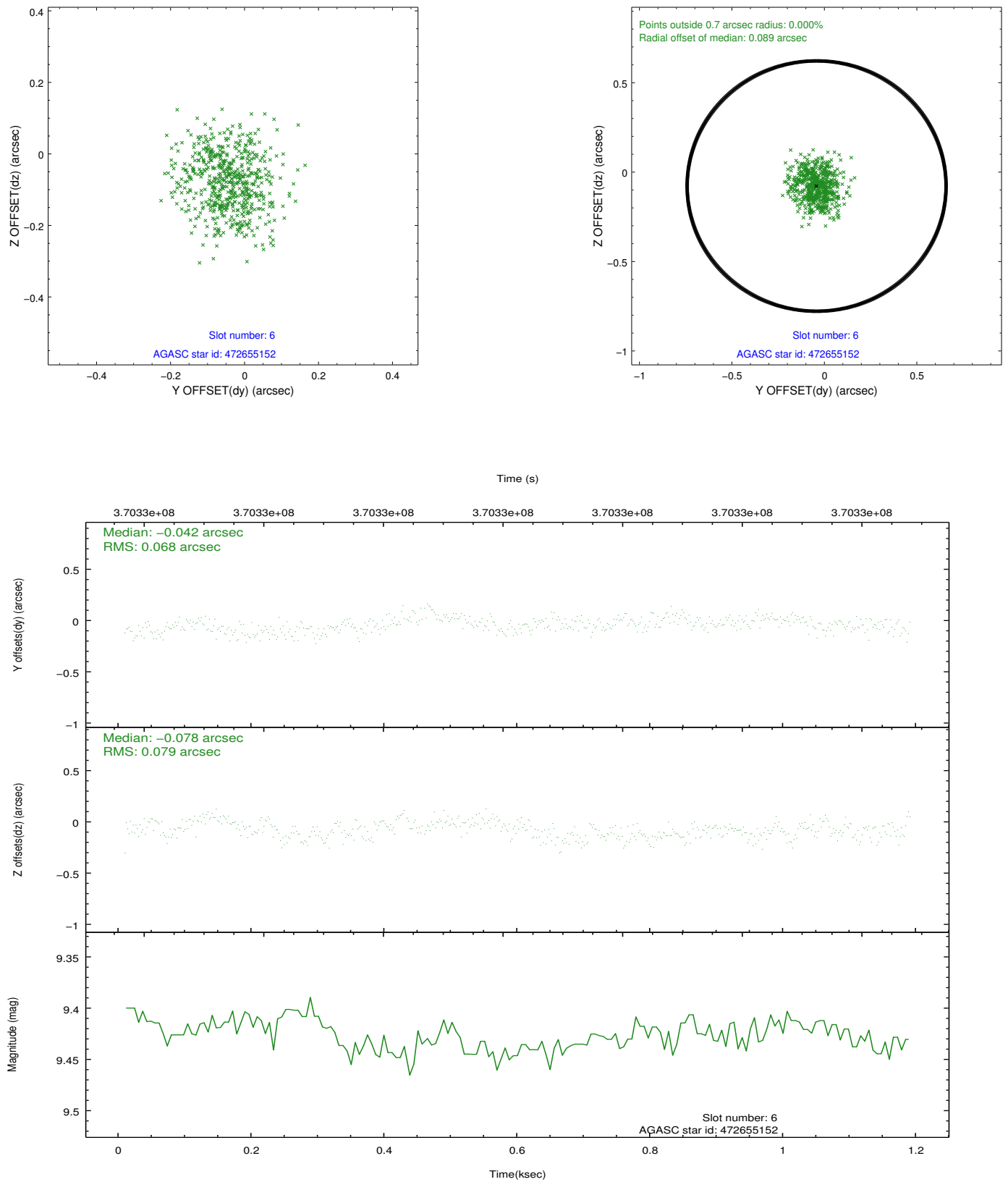
2.4.2 Slot 4



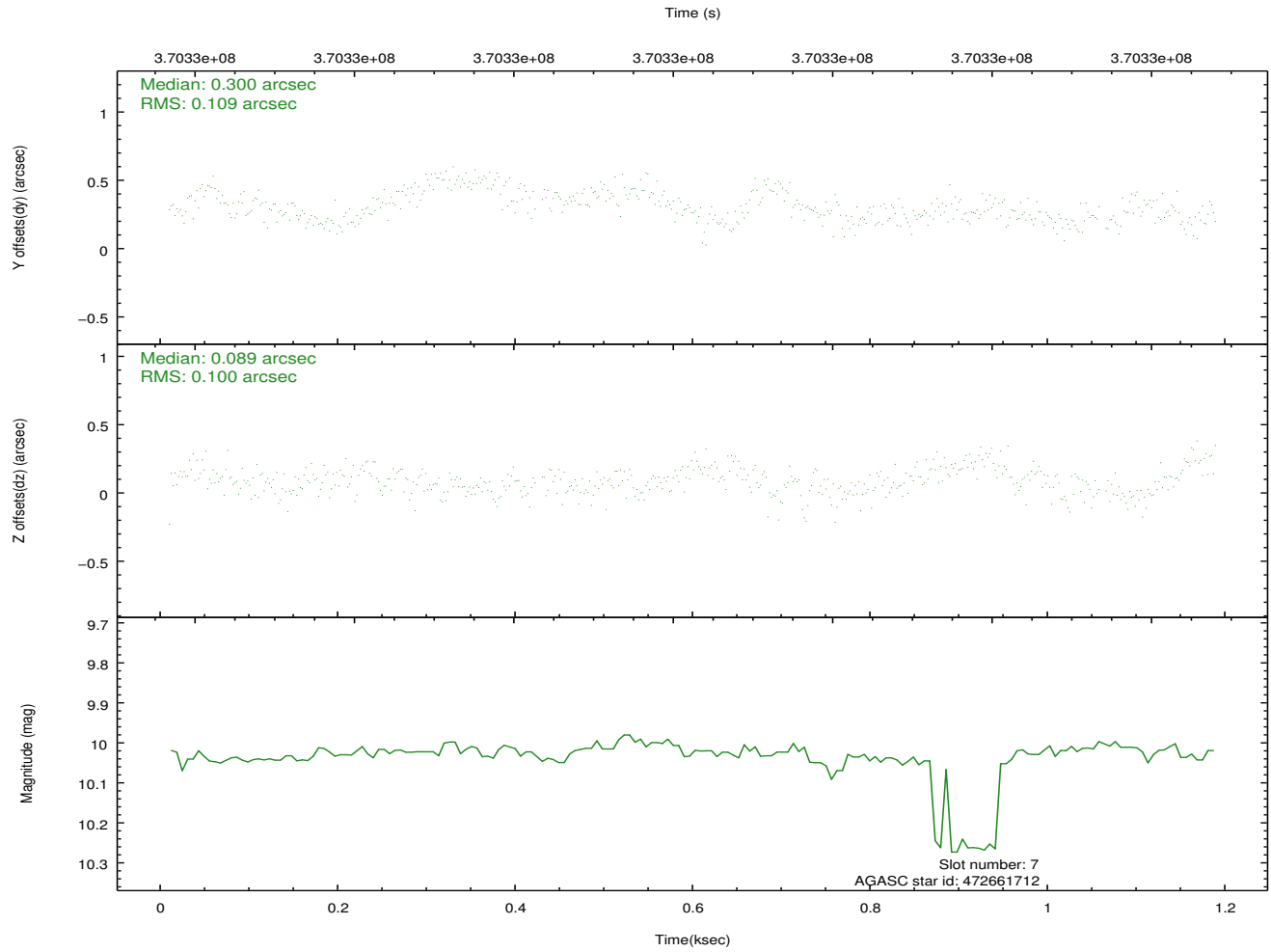
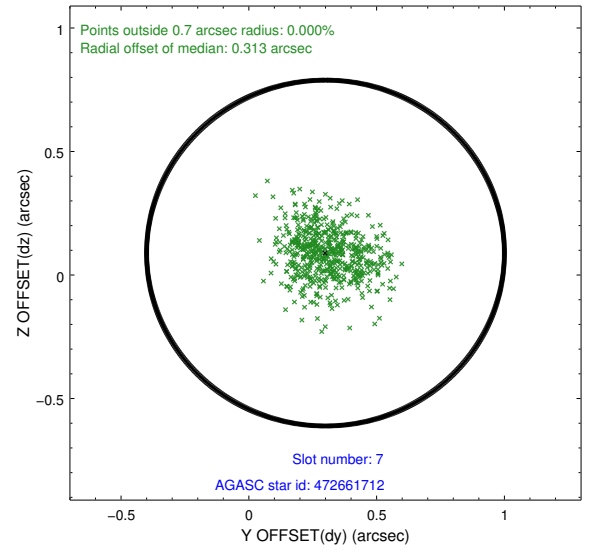
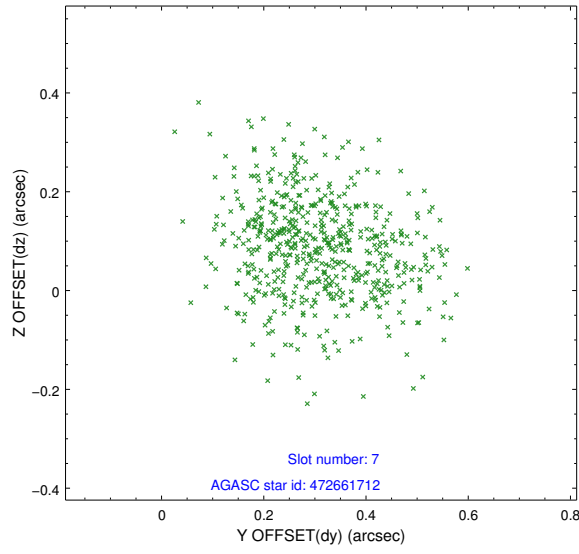
2.4.3 Slot 5



2.4.4 Slot 6

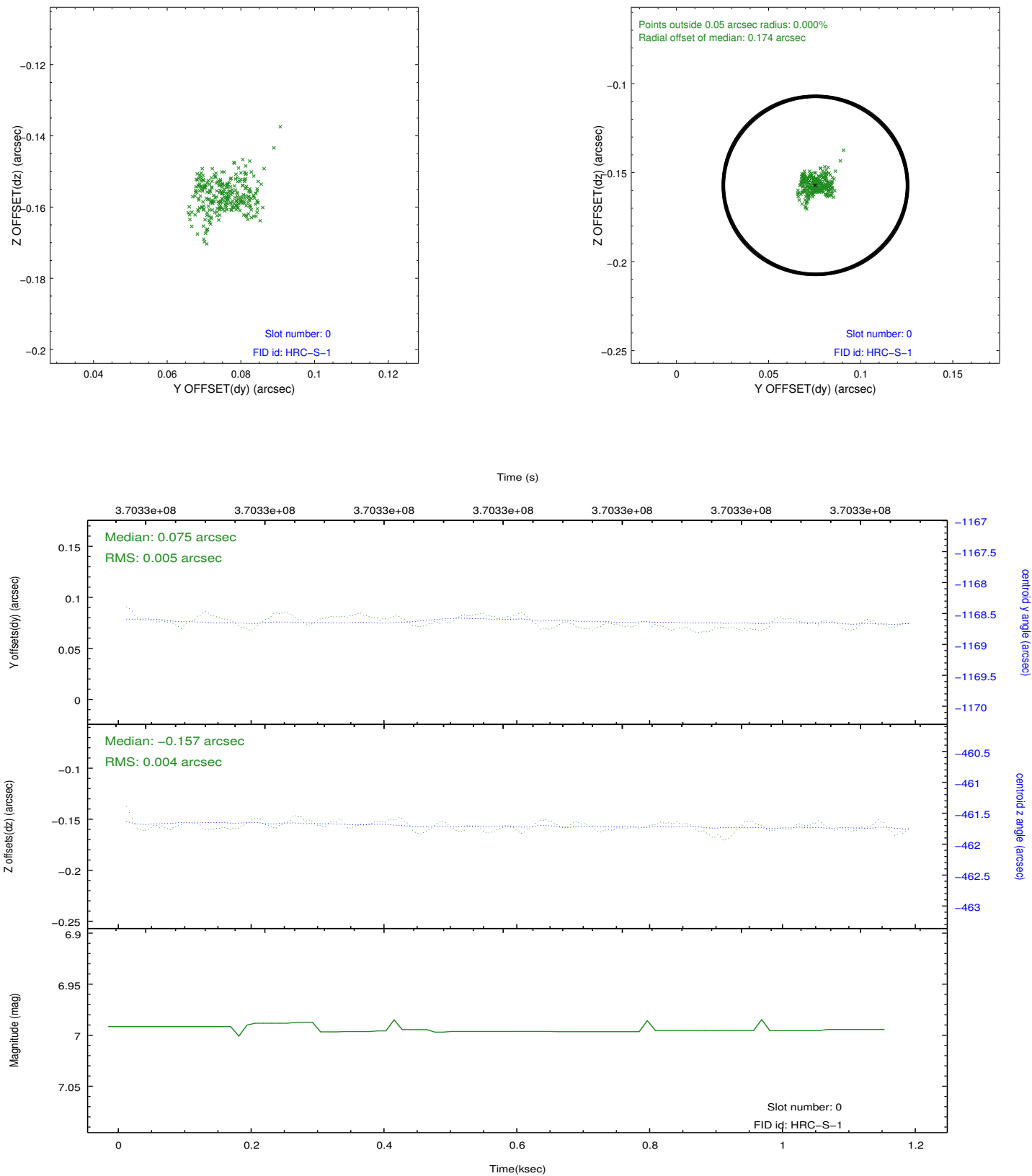


2.4.5 Slot 7

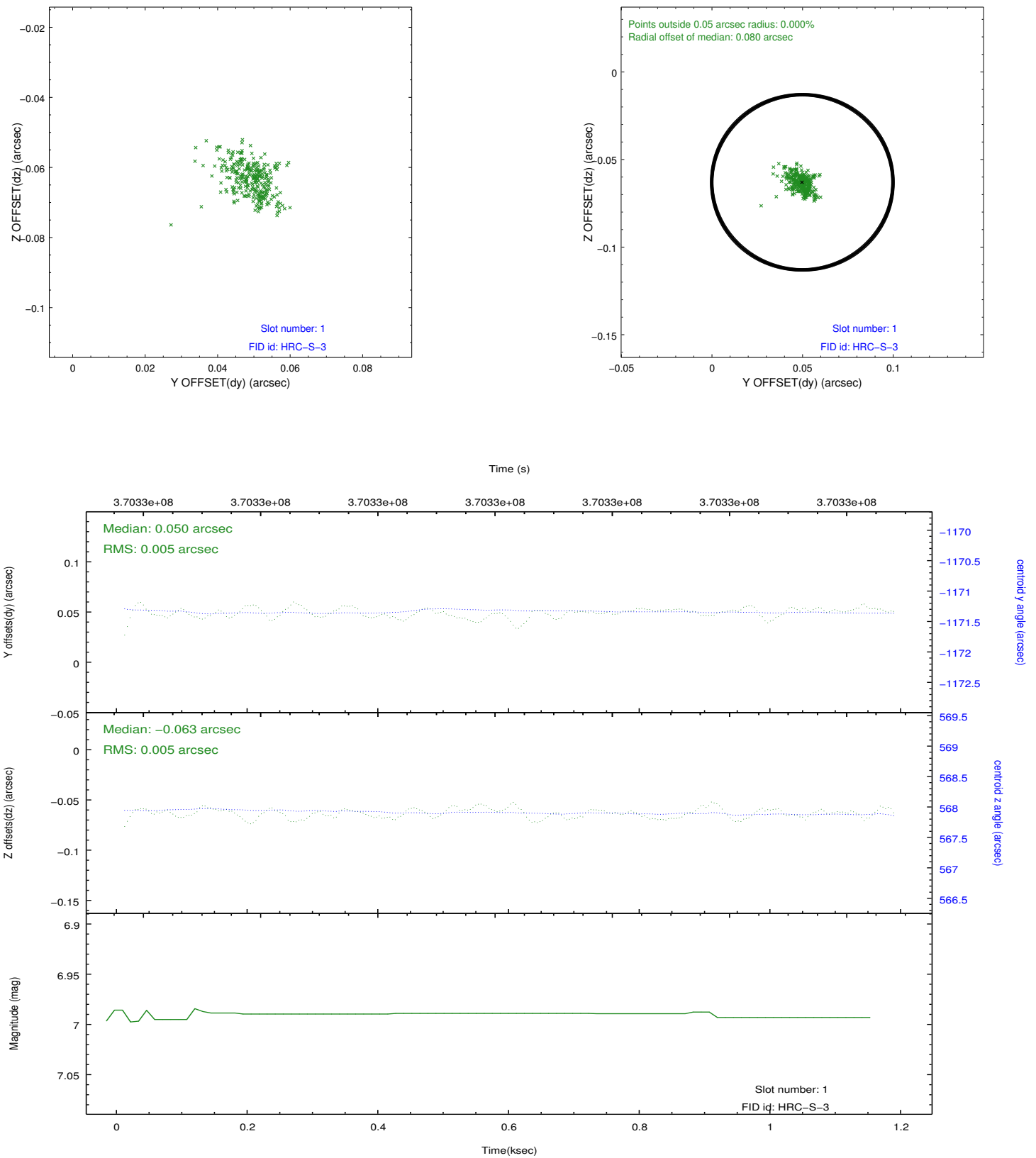


2.5 FID Slots

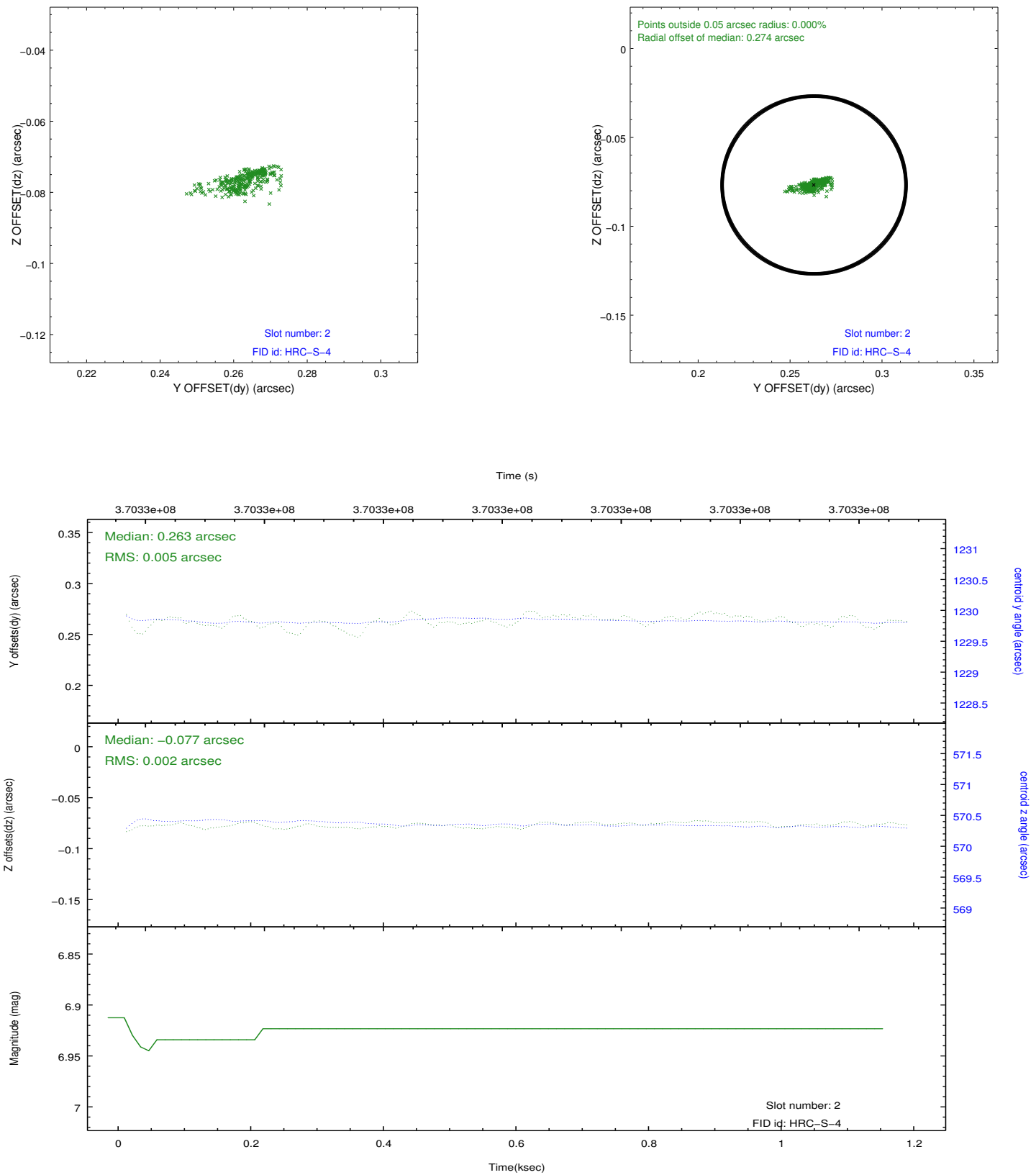
2.5.1 Slot 0



2.5.2 Slot 1



2.5.3 Slot 2



A Summary

A.1 Status

V&V Scientist	Jen Lauer
V&V Date (YYYY-MM-DD)	2012.08.22
V&V Edition	1
V&V Disposition and Status	OK
V&V Charge Time	1.1797750592828

A.2 Comments