

V&V Reference Report

L2 ASCDS Version : 8.4.4

Observation 9690 - L2 Version 2
Chandra X-Ray Center

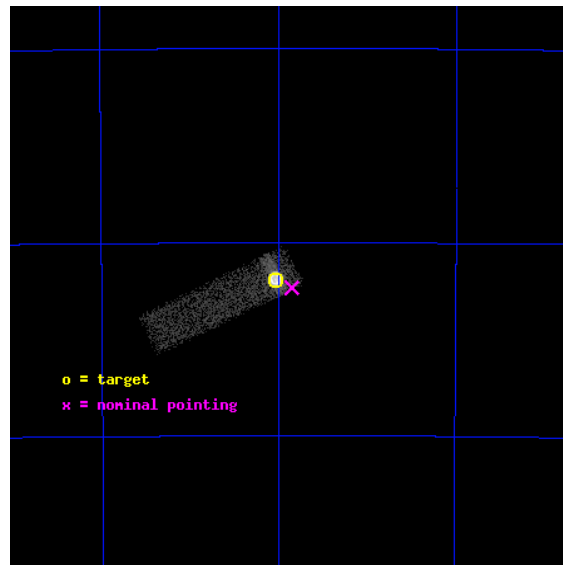
L2 Processing Date : May 9 2012

Contents

1	Front	2
2	OBI	3
2.1	OBI	3
2.1.1	Images	3
2.1.2	Bias	3
2.1.3	Parameters	4
2.1.4	Events	4
2.2	Compared Parameters	5
2.3	Aspect	6
2.4	Star Slots	9
2.4.1	Slot 3	9
2.4.2	Slot 4	10
2.4.3	Slot 5	11
2.4.4	Slot 6	12
2.4.5	Slot 7	13
2.5	FID Slots	14
2.5.1	Slot 0	14
2.5.2	Slot 1	15
2.5.3	Slot 2	16
A	Summary	17
A.1	Status	17
A.2	Comments	17

1 Front

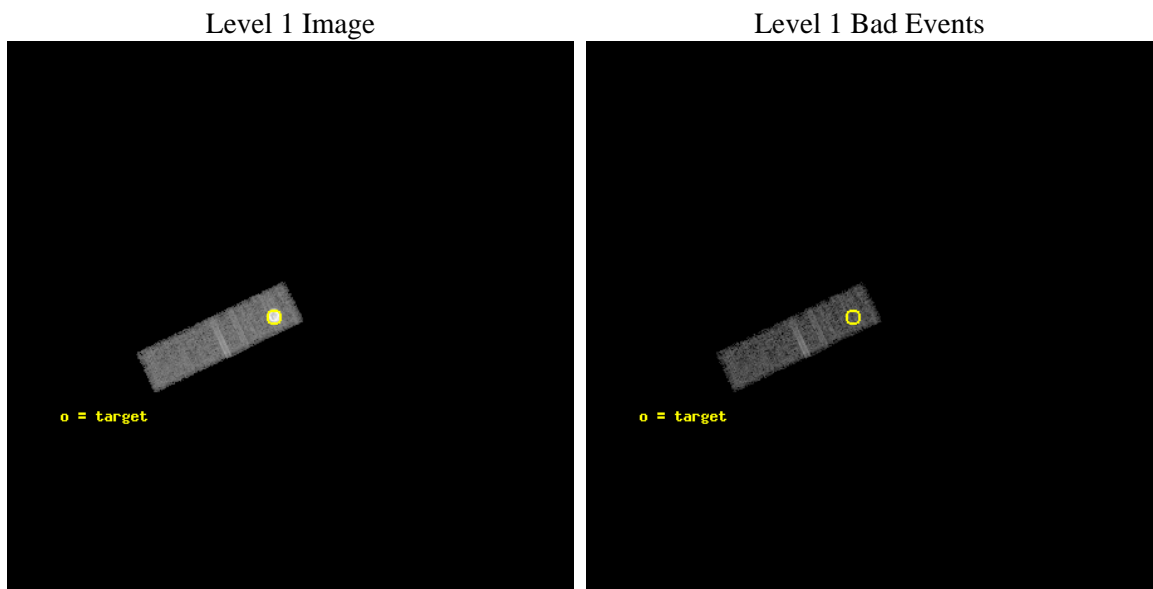
seq_num	590468	Sequence number
obs_id	9690	Observation id
title	AO9 Calibration Observations of E0102-72	Proposal title
observer	Dr. CXC Calibration	Principal investigator
object	E0102-72 I3,-120,-0.5,0.5,0	Source name
dtcycle	0	
cycle	P	events from which exps? Prim/Second/Both
ra_targ	16.01	Observer's specified target RA [deg]
dec_targ	-72.032028	Observer's specified target Dec [deg]
ra_nom	15.962706315011	Nominal RA [deg]
dec_nom	-72.039120117819	Nominal Dec [deg]
roll_nom	244.58188981995	Nominal Roll [deg]
revision	2	Processing version of data
ontime	20176.000300705	Sum of GTIs [s]
livetime	19191.477504714	Livetime [s]
ontime3	20176.000300705	Sum of GTIs [s]
l2events	66358	Number of level 2 events



2 OBI

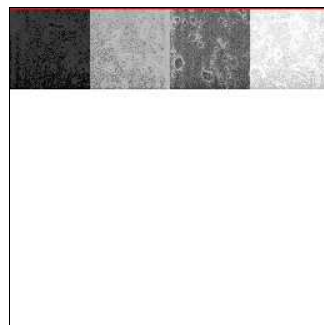
2.1 OBI

2.1.1 Images



2.1.2 Bias

Chip 3



2.1.3 Parameters

obi_num	0	Obi number	sched_exp_time	20000.000000	[s] Scheduled observation exposure time
ascdsver	8.4.4	Processing system revision	ontime	20176.000300705	Sum of GTIs [s]
caldsver	4.4.9	 	ontime3	20176.000300705	Sum of GTIs [s]
date	2012-05-09T03:23:32	Date and time of file creation	l1events	115977	Number of level 1 events
revision	2	Processing version of data			

2.1.4 Events

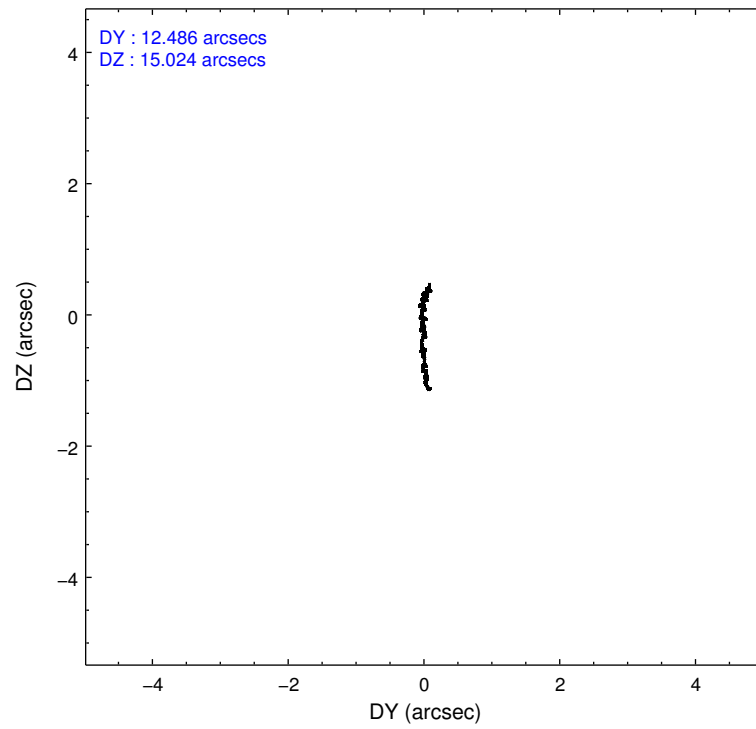
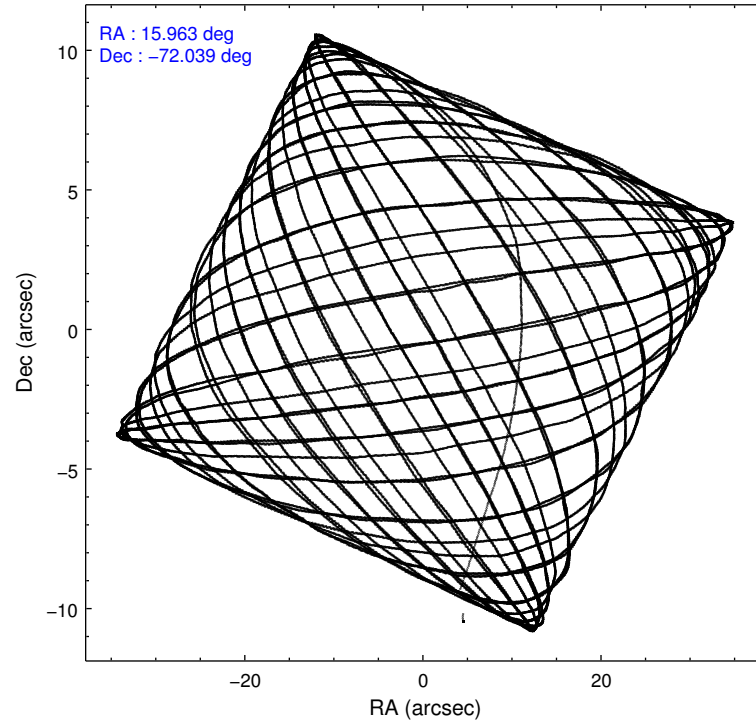
	ccd 3
level 1 events	115977
rejected events	48716
rejected %	42%

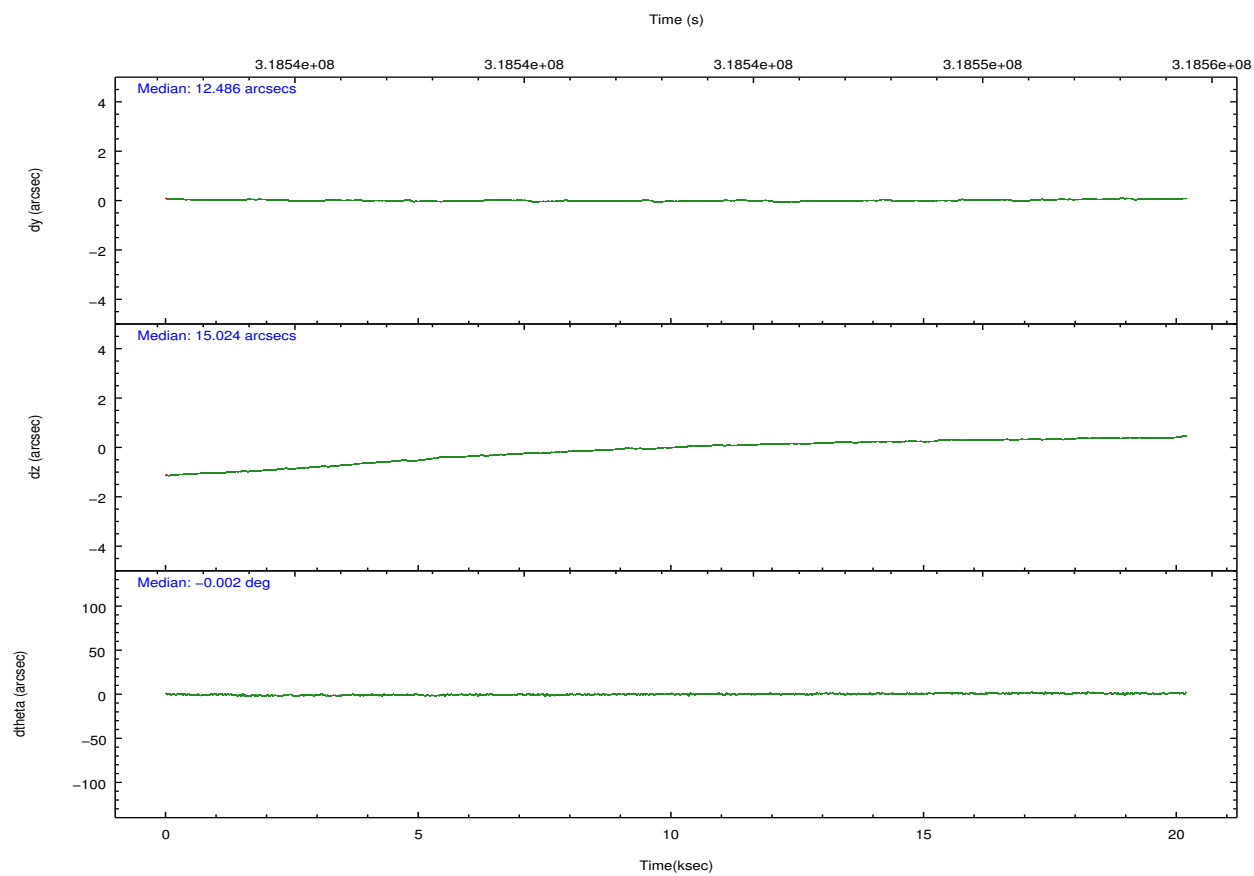
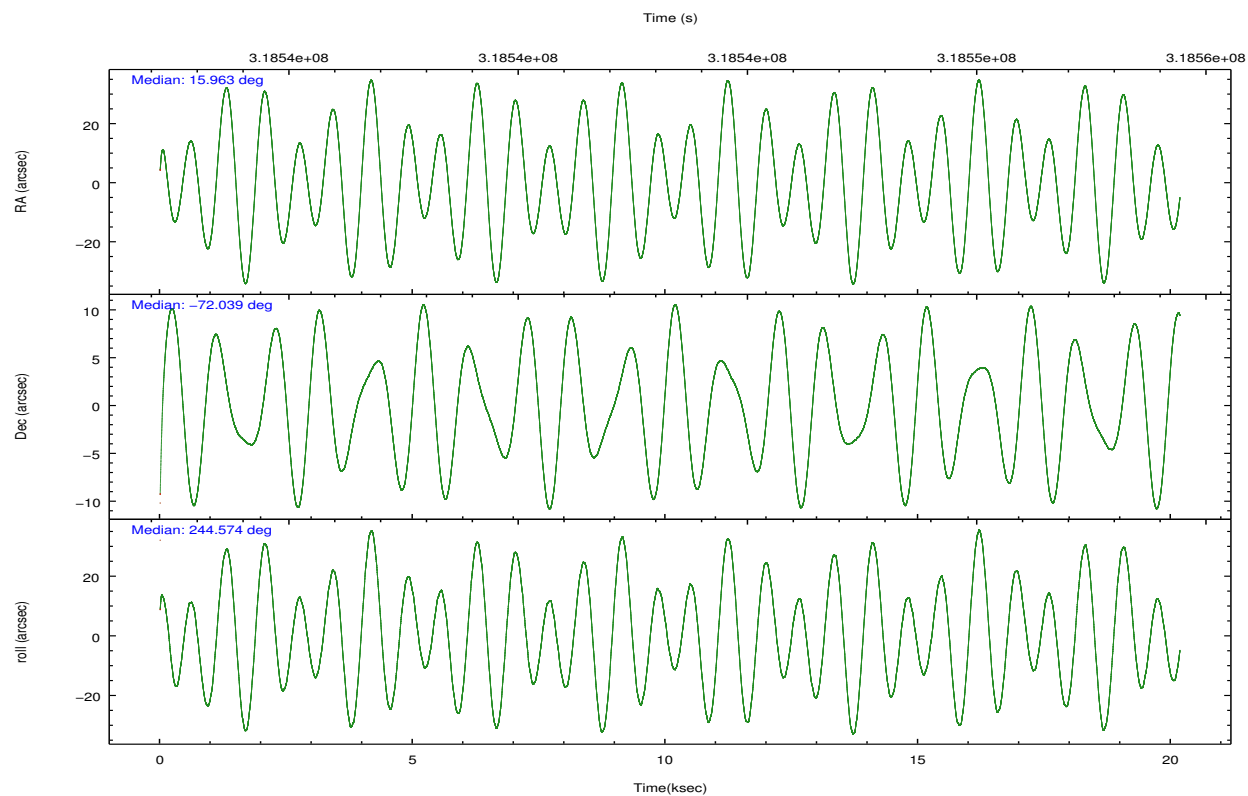
	ccd 3
grade 0 events	58614
	50%
grade 1 events	175
	0%
grade 2 events	4768
	4%
grade 3 events	1763
	1%
grade 4 events	1694
	1%
grade 5 events	1601
	1%
grade 6 events	1047
	0%
grade 7 events	46315
	39%

2.2 Compared Parameters

Parameter	Planned	Actual	Parameter	Planned	Actual
Instrument	ACIS	ACIS	Obspar format version number	7	7
Detector	ACIS-3	ACIS-3	Obspar file type	PREDICTED	ACTUAL
Grating	NONE	NONE	Obspar update status	NONE	UPDATED
Data mode	VFAINT	VFAINT	Number of optional ACIS chips dropped	0	0
Observation mode	POINTING	POINTING	On-chip summing requested	N	N
[deg] Pointing RA	15.955302	15.96270631501108	Subarray requested	CUSTOM	1/4
[deg] Pointing Dec	-72.011729	-72.03912011781894	Subarray start row	768	768
[deg] Pointing Roll	244.366160	244.5818898199481	Subarray row count	256	256
[s] Window start time (MET)	312854465.184000	312854465.184000	Alternating exposures requested	N	N
[s] Window stop time (MET)	325900865.184000	325900865.184000	[s] Primary exposure time	0.000000	0.8
[mm] SIM focus pos	-0.782348	-0.7809083437167272			
[mm] SIM defocus	0	0.001439871863259334			
[mm] SIM translation stage pos	-233.592463	-233.5874344608287			
[mm] SIM translation stage offset	0	-0.005018542100998502			
[s] Observation start time (MET)	318533408.184000	318532241.87325			
Observation start date	2008-02-04T17:29:03	2008-02-04T17:10:41			
[s] Observation end time (MET)	318553408.184000	318553541.37429			
Observation end date	2008-02-04T23:02:23	2008-02-04T23:05:41			
Read mode	TIMED	TIMED			

2.3 Aspect



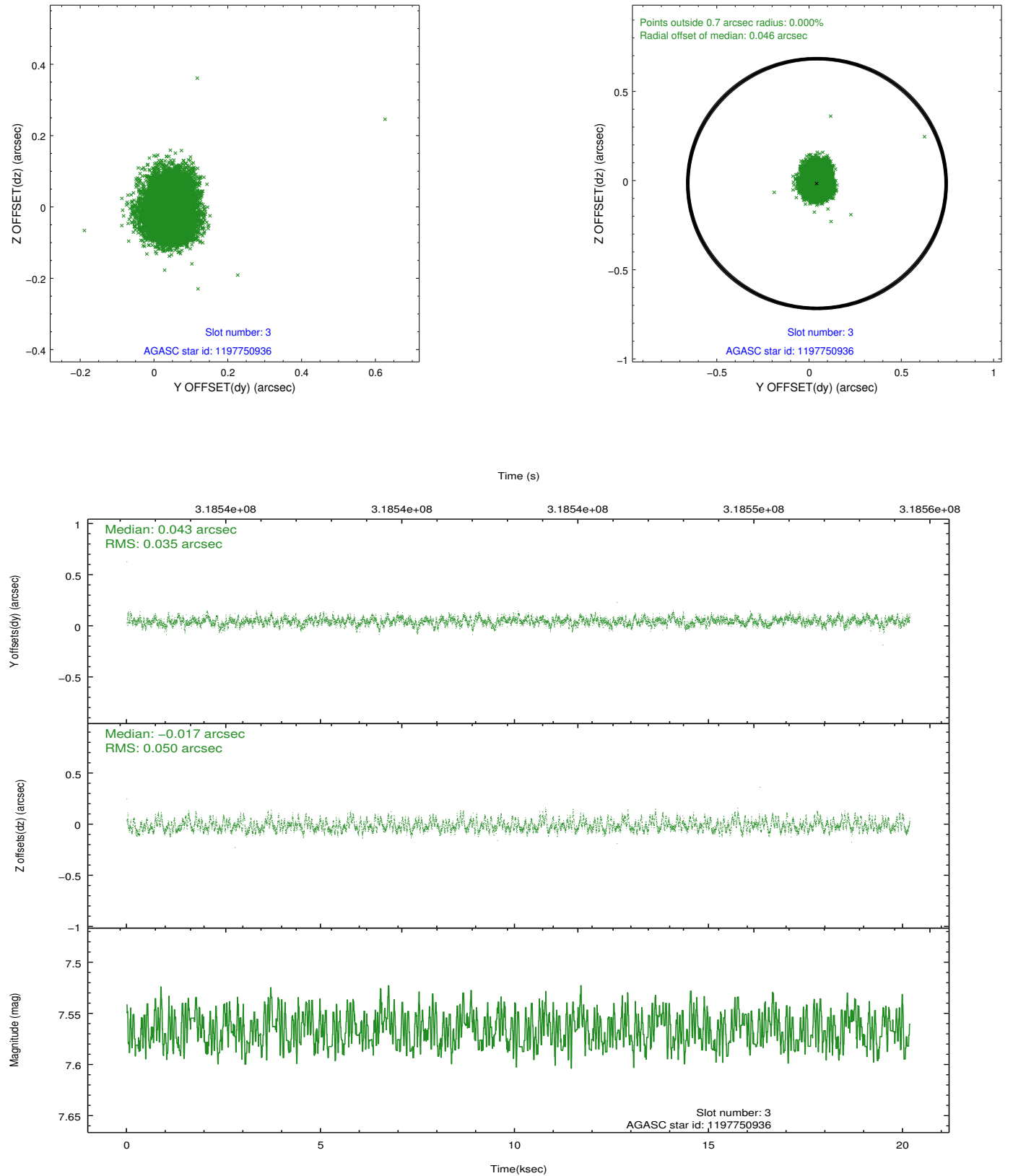


Slot Statistics

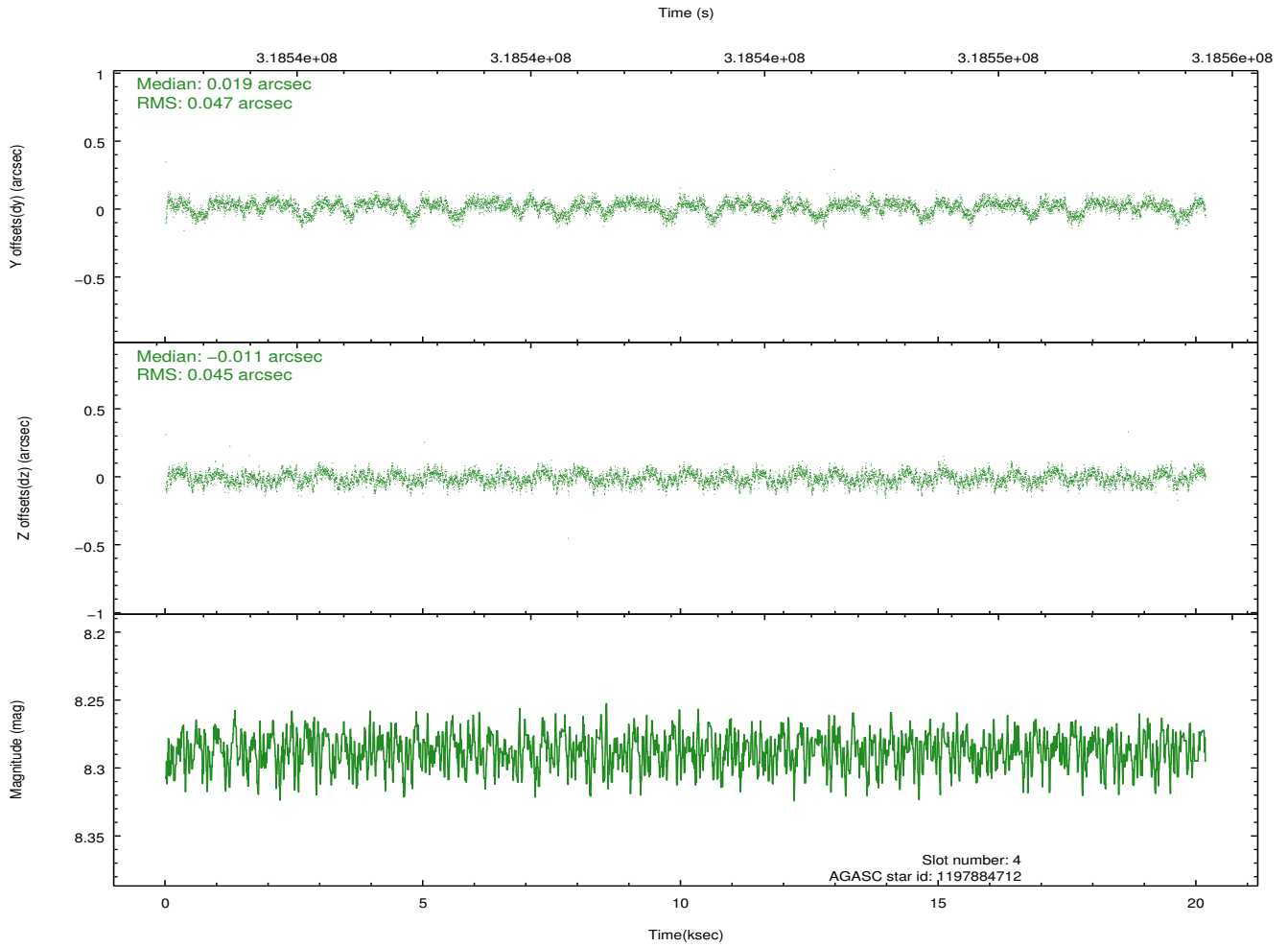
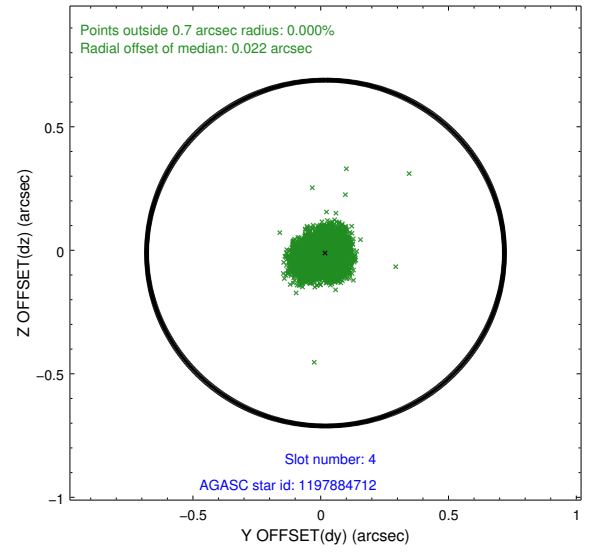
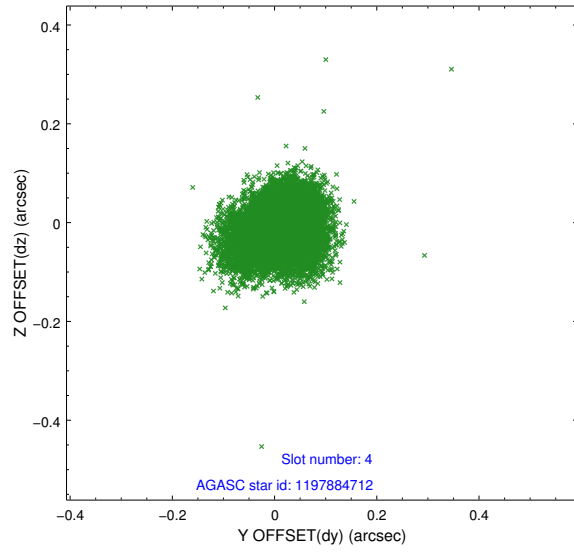
slot	status	id	mag	n_pts	med_dy	med_dz	dr1	dr2	ra	dec	mean_y	mean_z
0	FID	ACIS-I-1	7.00	4922	0.010	0.008	0.016	0.028	0.000000	0.000000	927.04	-838.47
1	FID	ACIS-I-5	6.99	4922	-0.154	0.032	0.007	0.012	0.000000	0.000000	-1821.12	1058.95
2	FID	ACIS-I-6	7.00	4922	0.053	0.030	0.013	0.028	0.000000	0.000000	392.44	1703.65
3	GUIDE	1197750936	7.57	9844	0.043	-0.017	0.065	0.104	15.387940	-71.549550	-1216.92	-1301.05
4	GUIDE	1197884712	8.29	9843	0.019	-0.011	0.069	0.111	16.087398	-72.252690	719.66	506.25
5	GUIDE	1197885104	9.37	9826	0.075	-0.089	0.113	0.180	17.845067	-72.189368	-293.35	2166.62
6	GUIDE	1197885328	7.25	9838	0.024	0.170	0.083	0.128	16.283090	-71.733943	-1061.12	-97.70
7	GUIDE	1198283128	7.84	9838	-0.140	-0.049	0.109	0.159	17.272580	-72.642428	1448.78	2264.78

2.4 Star Slots

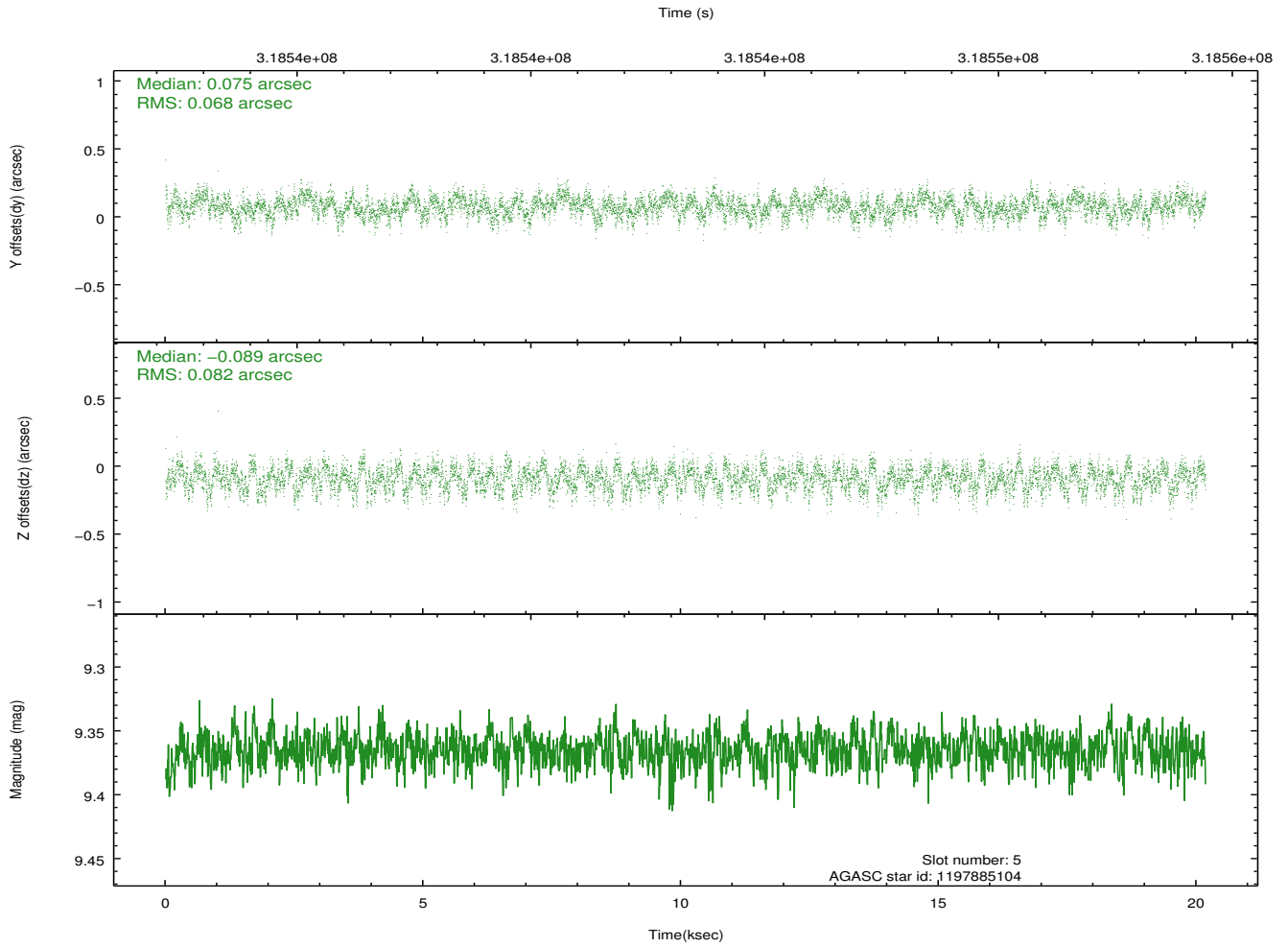
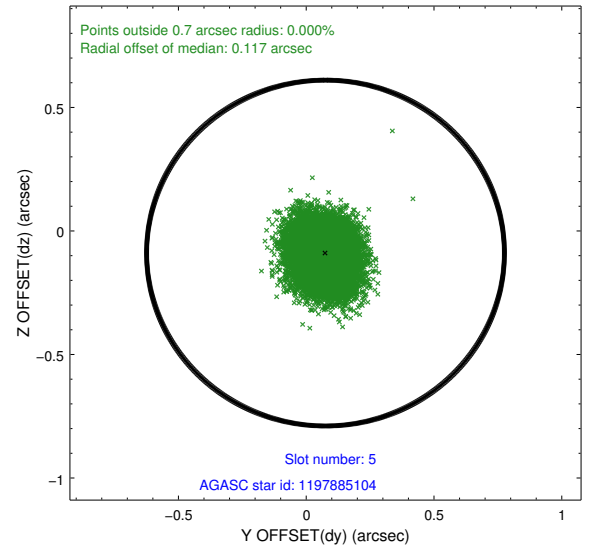
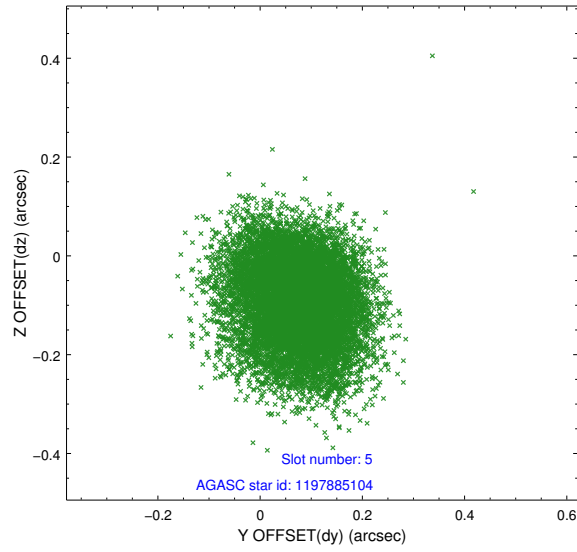
2.4.1 Slot 3



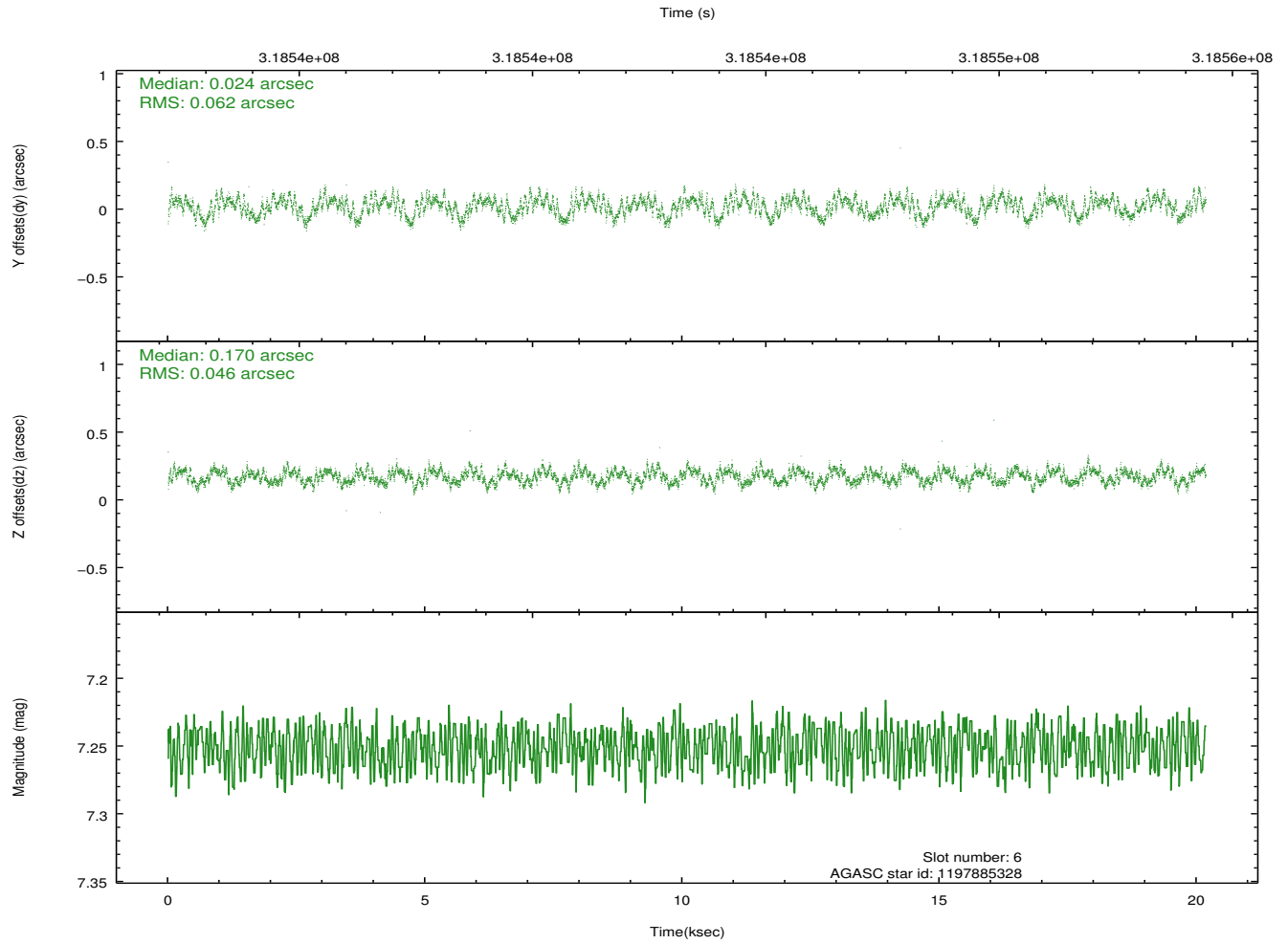
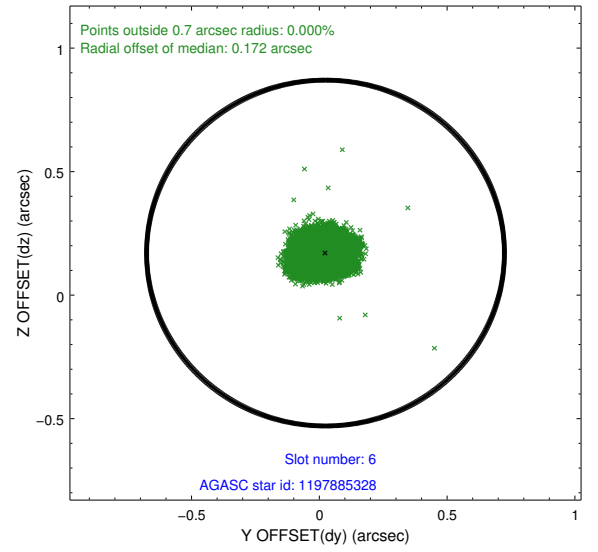
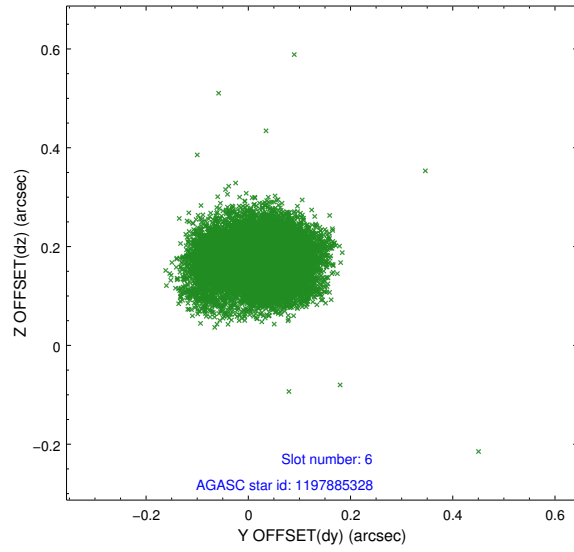
2.4.2 Slot 4



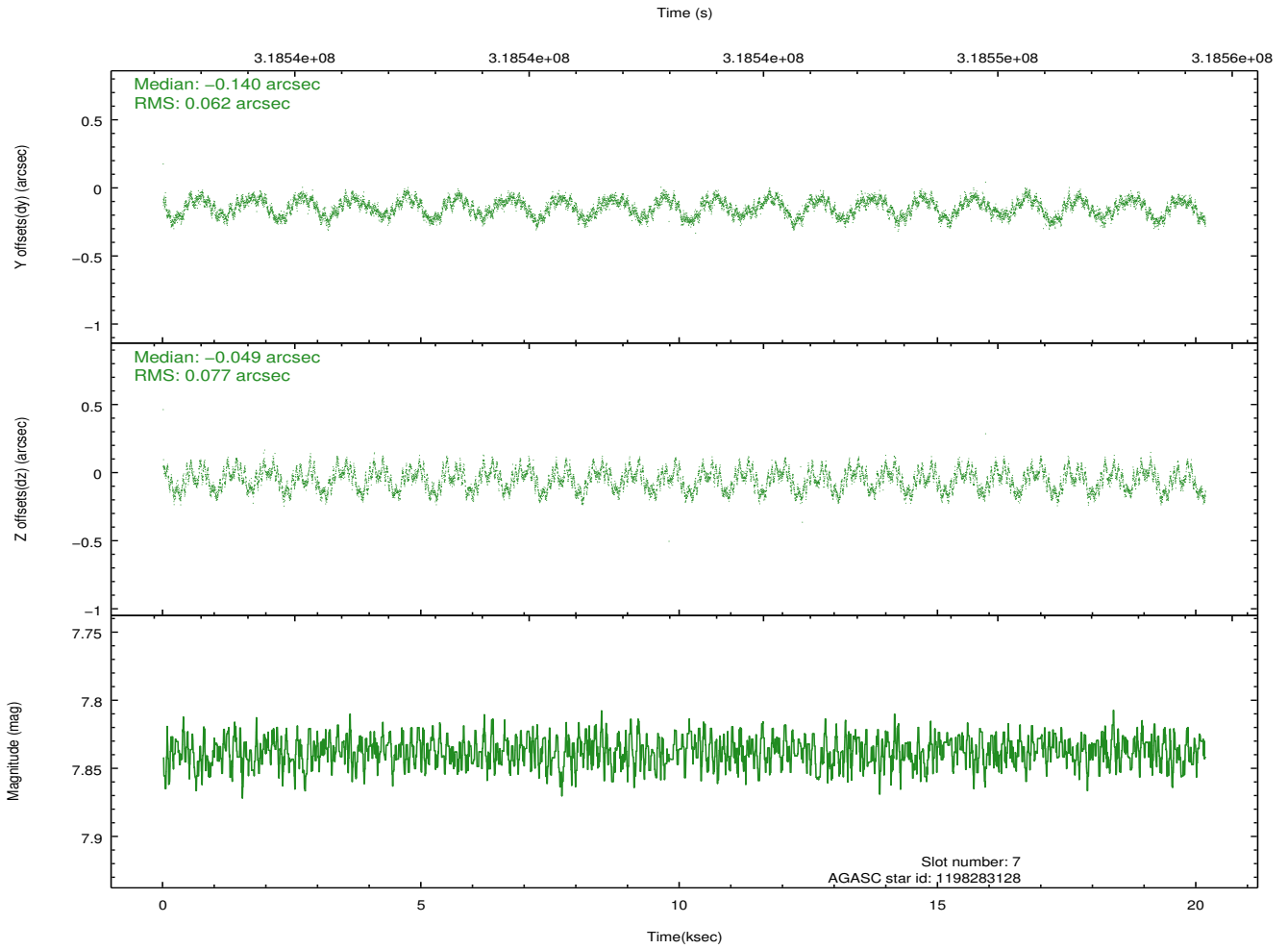
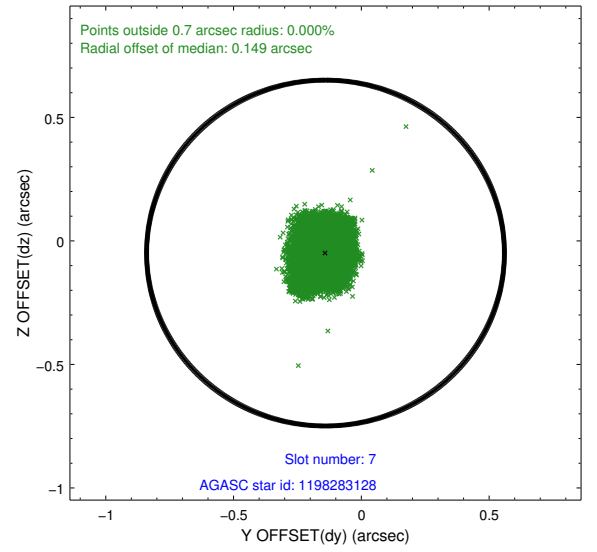
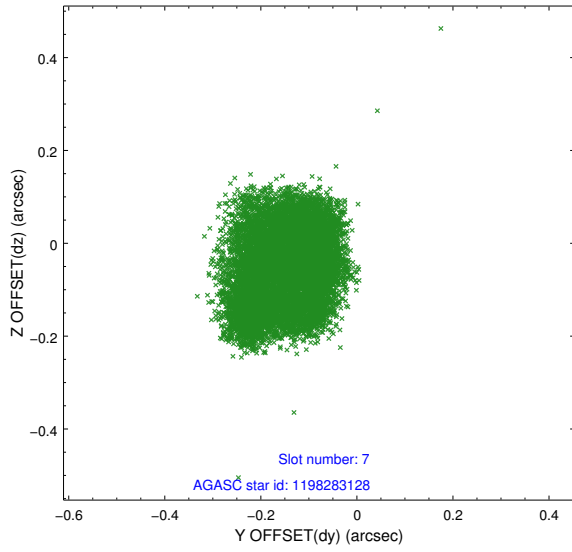
2.4.3 Slot 5



2.4.4 Slot 6

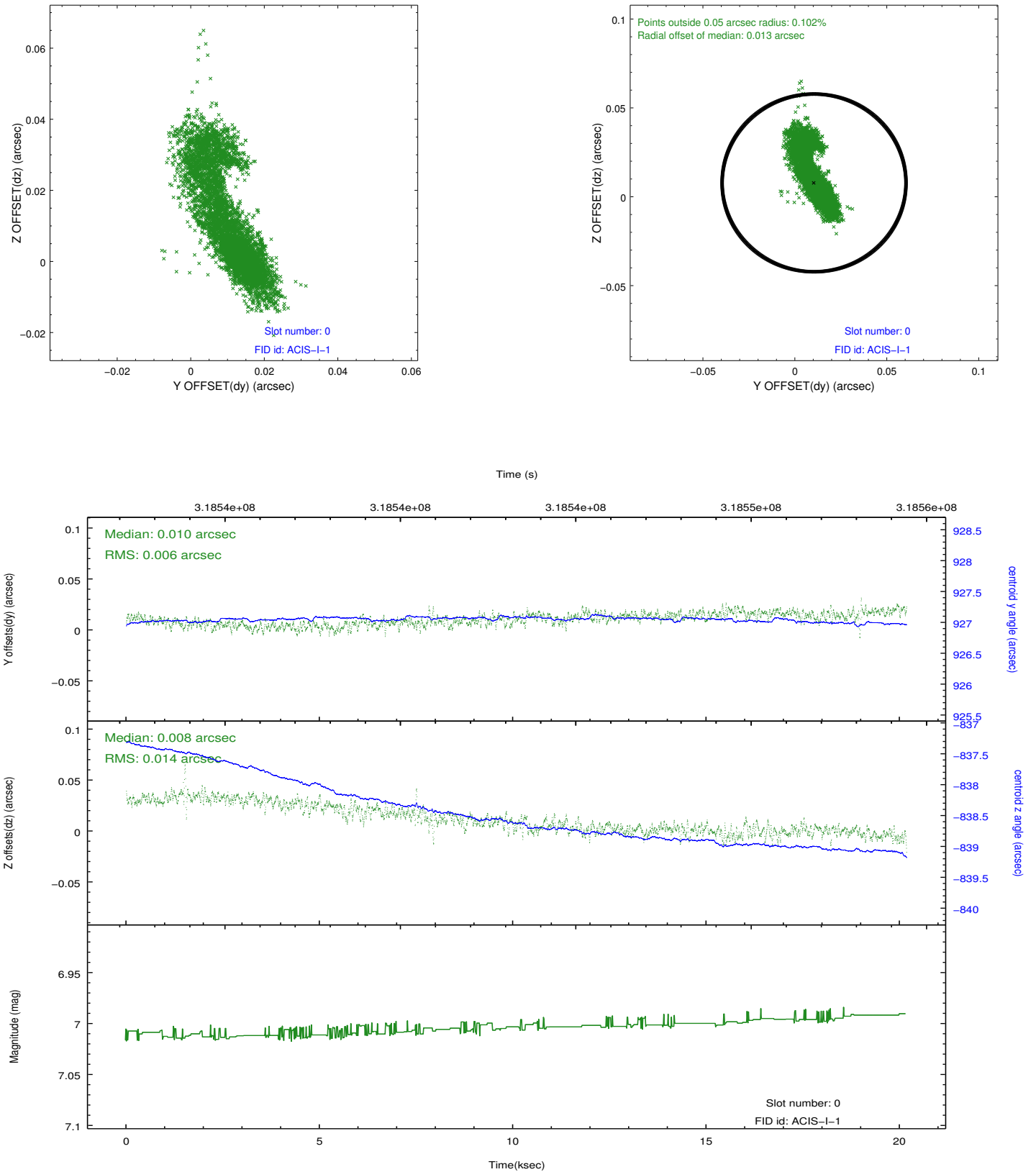


2.4.5 Slot 7

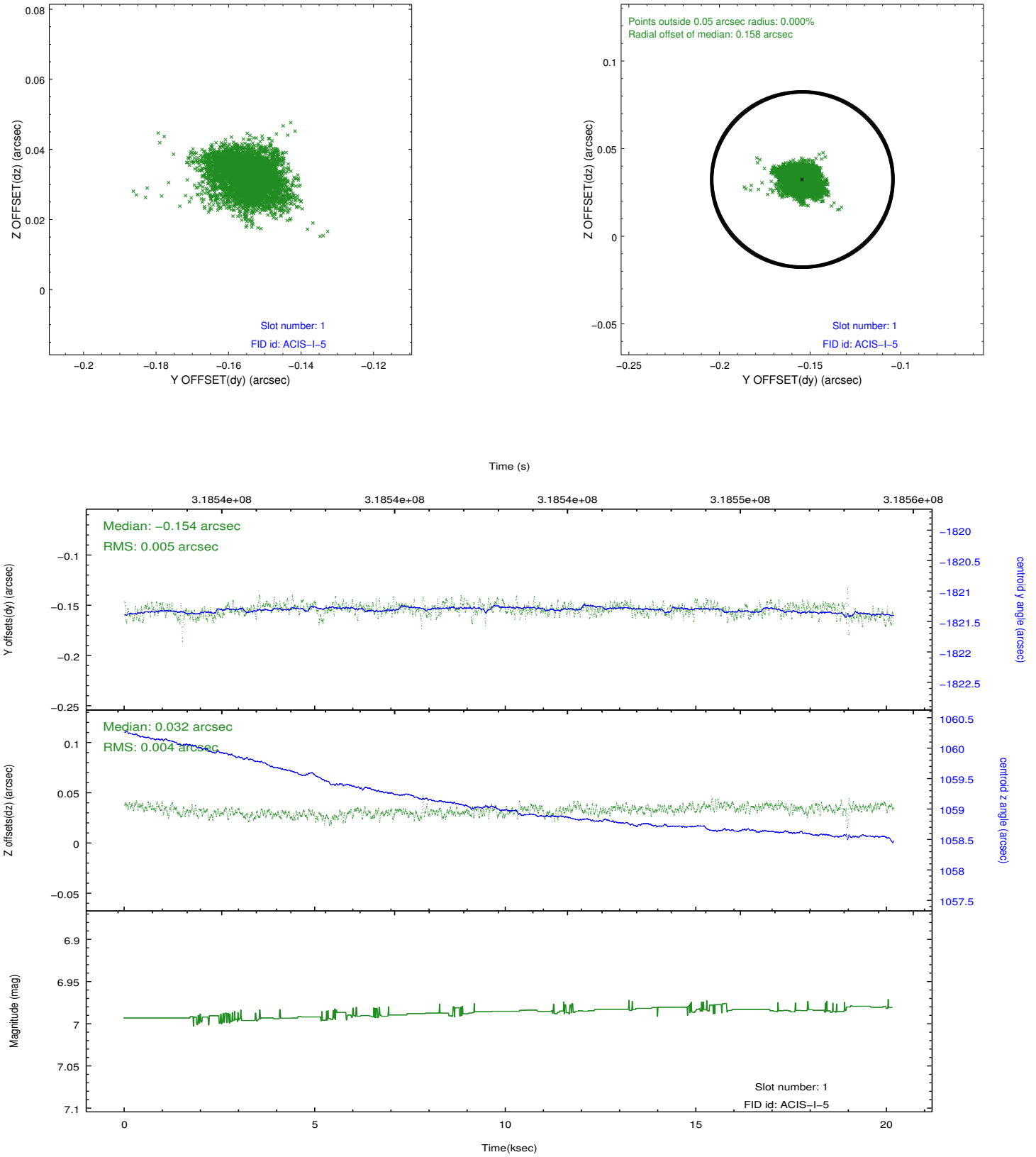


2.5 FID Slots

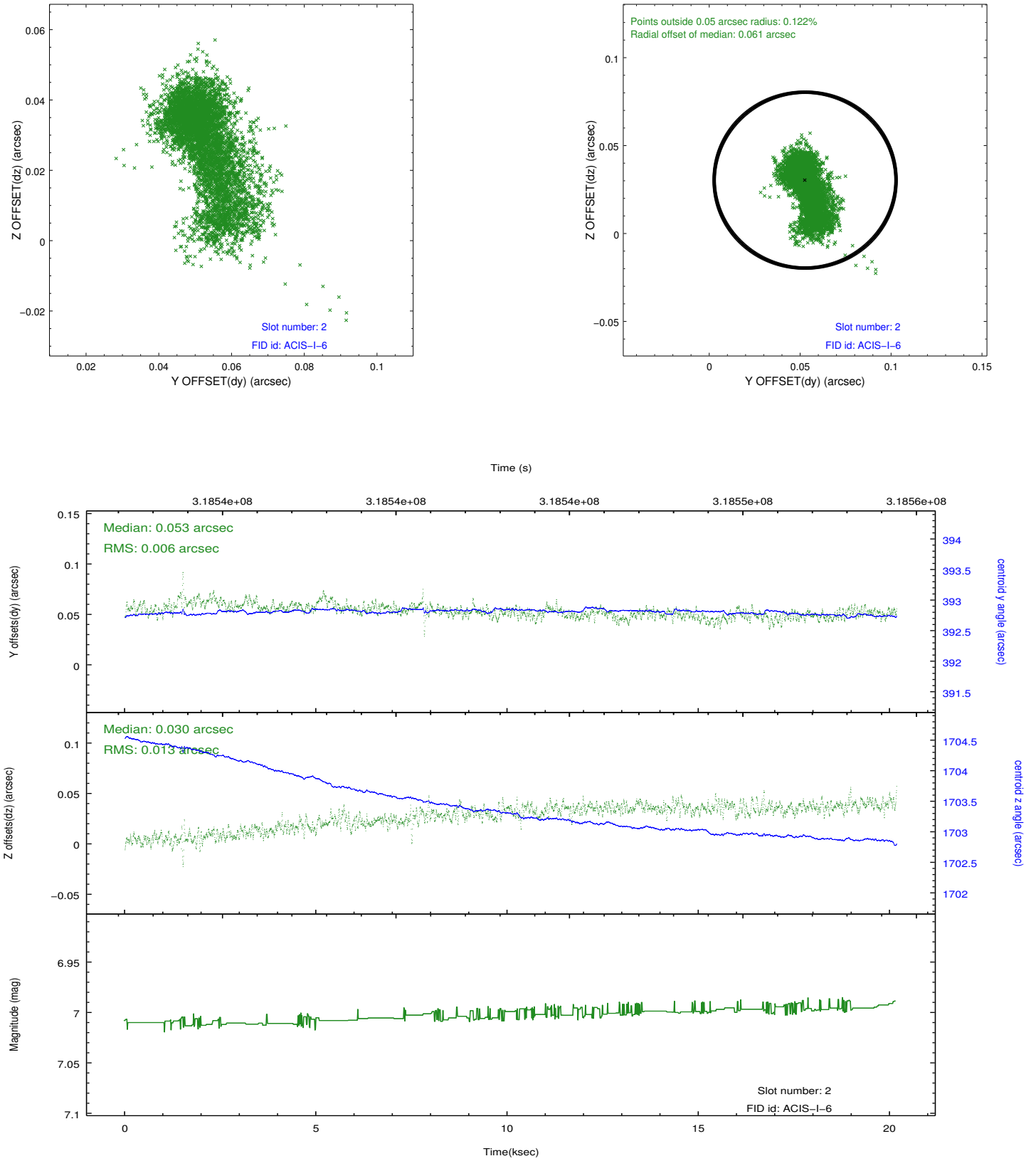
2.5.1 Slot 0



2.5.2 Slot 1



2.5.3 Slot 2



A Summary

A.1 Status

V&V Scientist	Beth Sundheim
V&V Date (YYYY-MM-DD)	2012.05.11
V&V Edition	1
V&V Disposition and Status	OK
V&V Charge Time	20.1760003

A.2 Comments

Window preference met.