

V&V Reference Report

L2 ASCDS Version : 8.4.4

Observation 9683 - L2 Version 3
Chandra X-Ray Center

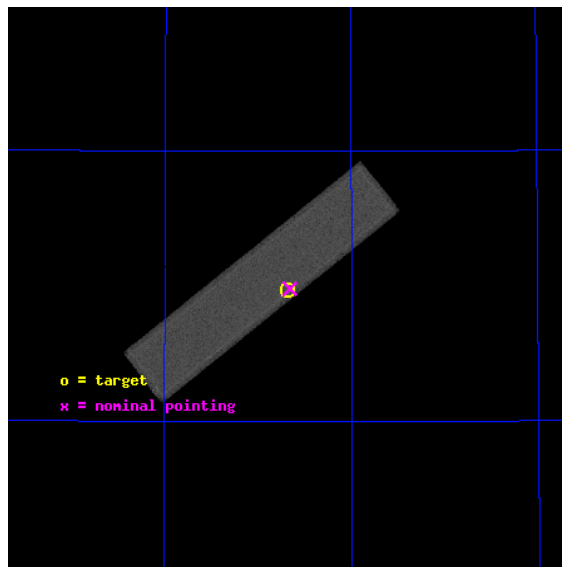
L2 Processing Date : Aug 12 2012

Contents

1	Front	2
2	OBI	3
2.1	OBI	3
2.1.1	Images	3
2.1.2	Parameters	4
2.1.3	Events	4
2.2	Compared Parameters	5
2.3	Aspect	6
2.4	Star Slots	9
2.4.1	Slot 3	9
2.4.2	Slot 4	10
2.4.3	Slot 5	11
2.4.4	Slot 6	12
2.4.5	Slot 7	13
2.5	FID Slots	14
2.5.1	Slot 0	14
2.5.2	Slot 1	15
2.5.3	Slot 2	16
A	Summary	17
A.1	Status	17
A.2	Comments	17

1 Front

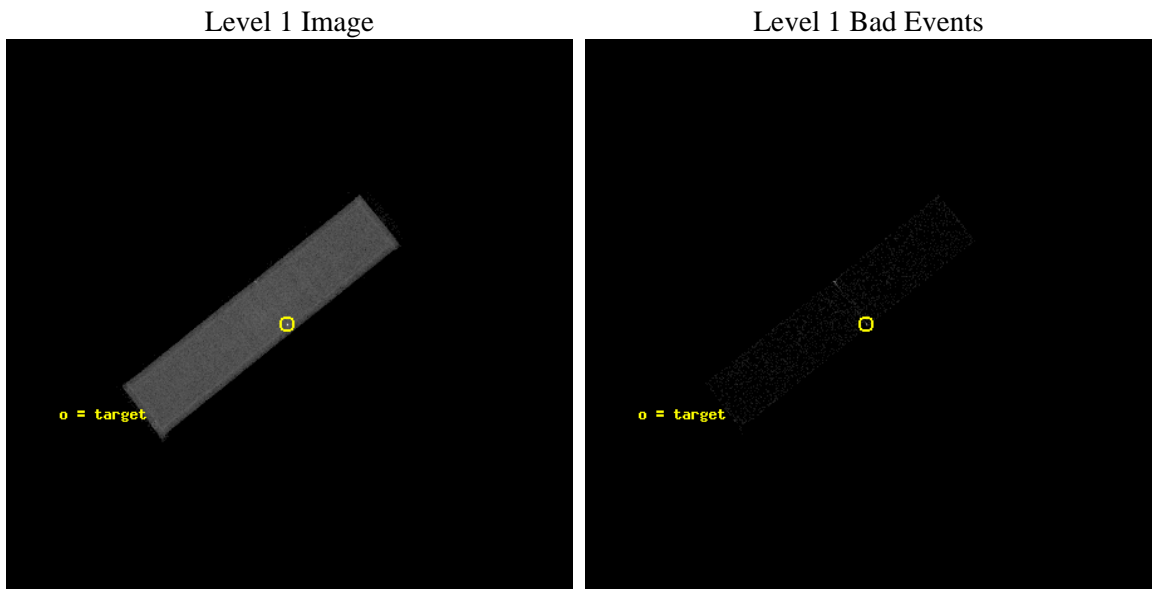
seq_num	290806	Sequence number
obs_id	9683	Observation id
title	AO9 Calibration Observations to Measure the Relative Alignment of the 4 Focal Plane Detectors	Proposal title
observer	Dr. CXC Calibration	Principal investigator
object	ArLac	Source name
ra_targ	332.17	Observer's specified target RA [deg]
dec_targ	45.742306	Observer's specified target Dec [deg]
ra_nom	332.16495849619	Nominal RA [deg]
dec_nom	45.745438309086	Nominal Dec [deg]
roll_nom	141.37102476199	Nominal Roll [deg]
revision	3	Processing version of data
ontime	3184.9314058423	[s]
livetime	3157.5214175615	Ontime multiplied by DTCOR
l2events	194202	Number of level 2 events



2 OBI

2.1 OBI

2.1.1 Images



2.1.2 Parameters

obi_num	0	Obi number	sched_exp_time	3000.000000	[s] Scheduled observation exposure time
ascdsver	8.4.5	Processing system revision	ontime	3184.9314058423	[s]
caldsver	4.5.1.1	 	l1events	300412	Number of level 1 events
date	2012-08-12T14:48:47	Date and time of file creation			
revision	3	Processing version of data			

2.1.3 Events

Level 1 Events

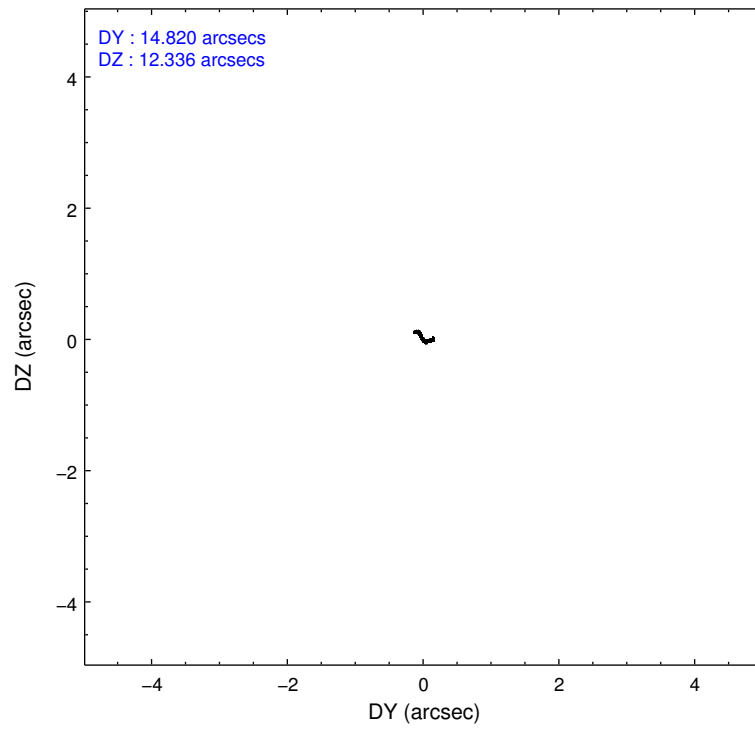
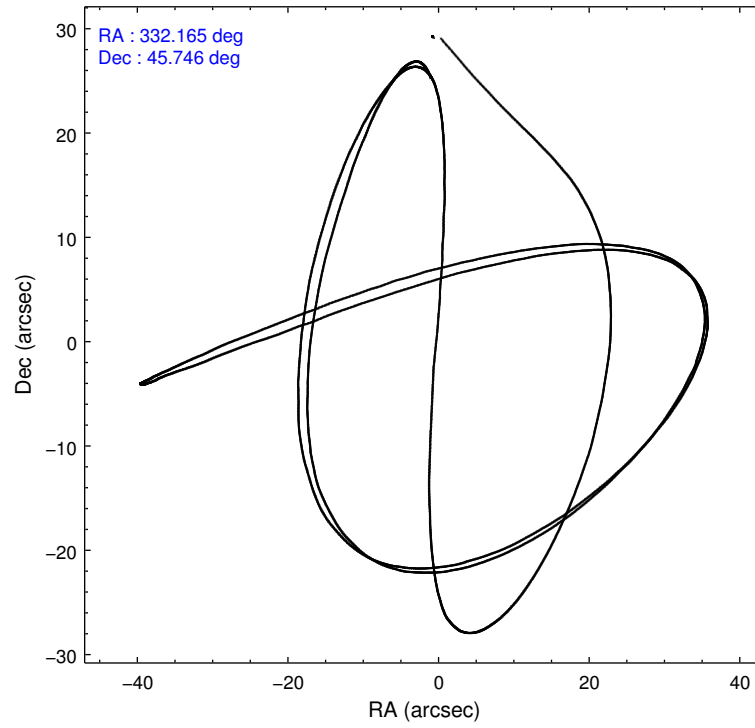
	segment 1	segment 2	segment 3
level 1 events	0	300412	0
rejected events	0	66687	0
rejected %	0%	22%	0%

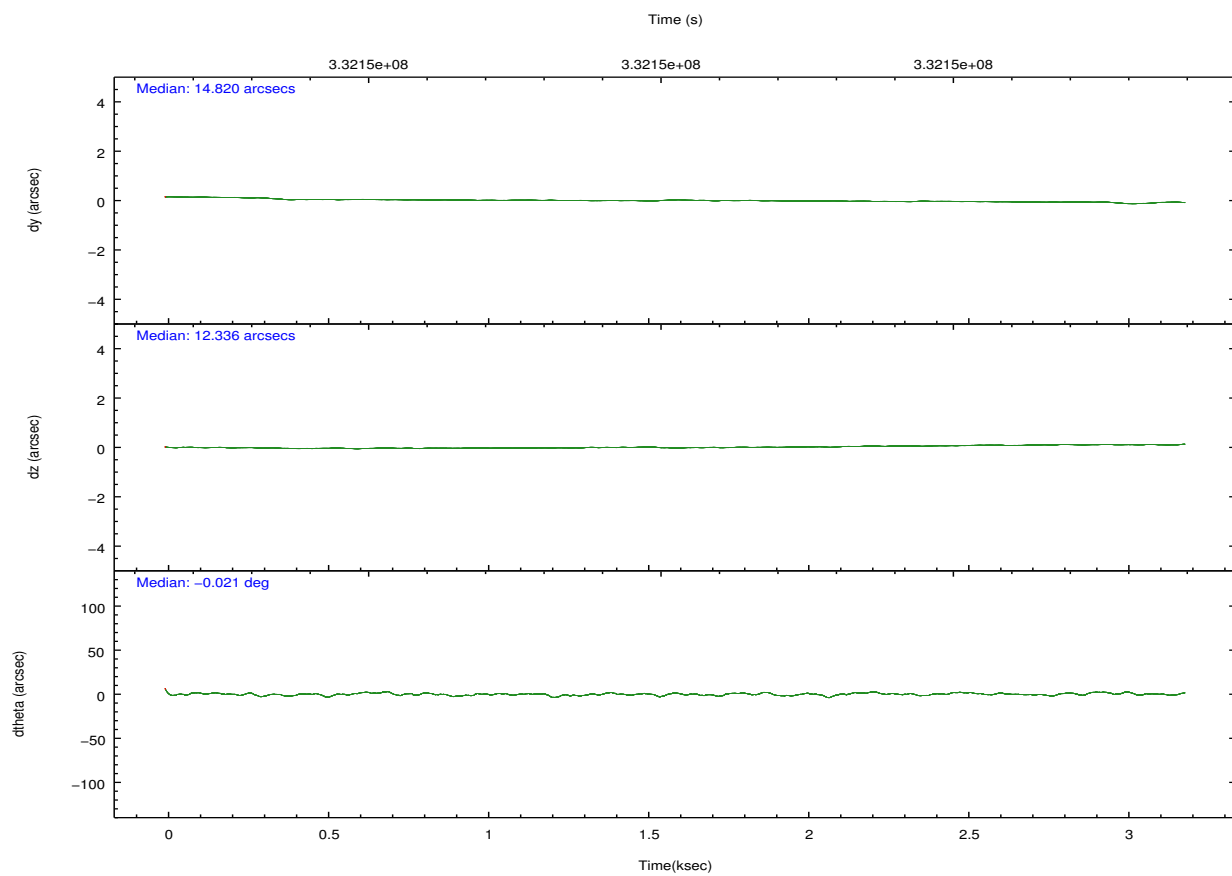
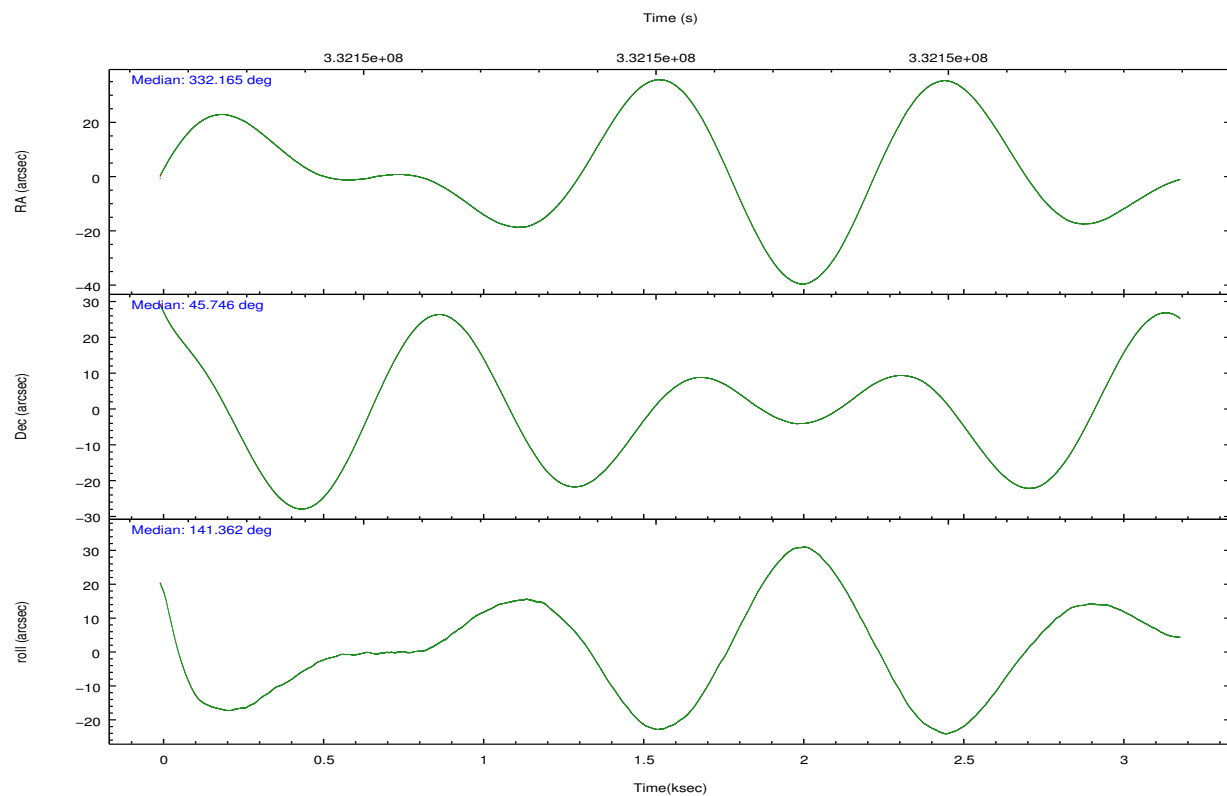
2.2 Compared Parameters

Parameter	Planned	Actual
Instrument	HRC	HRC
Detector	HRC-S	HRC-S
Grating	NONE	NONE
Data mode	OBSERVING	OBSERVING
Observation mode	POINTING	POINTING
[deg] Pointing RA	332.205657	332.164958496188
[deg] Pointing Dec	45.742426	45.74543830908636
[deg] Pointing Roll	141.274464	141.3710247619875
[mm] SIM focus pos	-1.533336	-1.526339935833849
[mm] SIM defocus	7.710433287538843e-07	0.006996703570447904
[mm] SIM translation stage pos	258.455976	258.4514984779555
[mm] SIM translation stage offset	-8	-7.995520084400823
[s] Observation start time (MET)	332150639.184000	332149649.41176
Observation start date	2008-07-11T08:02:54	2008-07-11T07:47:29
[s] Observation end time (MET)	332153639.184000	332153772.98696
Observation end date	2008-07-11T08:52:54	2008-07-11T08:56:12

Parameter	Planned	Actual
Obspar format version number	7	7
Obspar file type	PREDICTED	ACTUAL
Obspar update status	NONE	UPDATED

2.3 Aspect



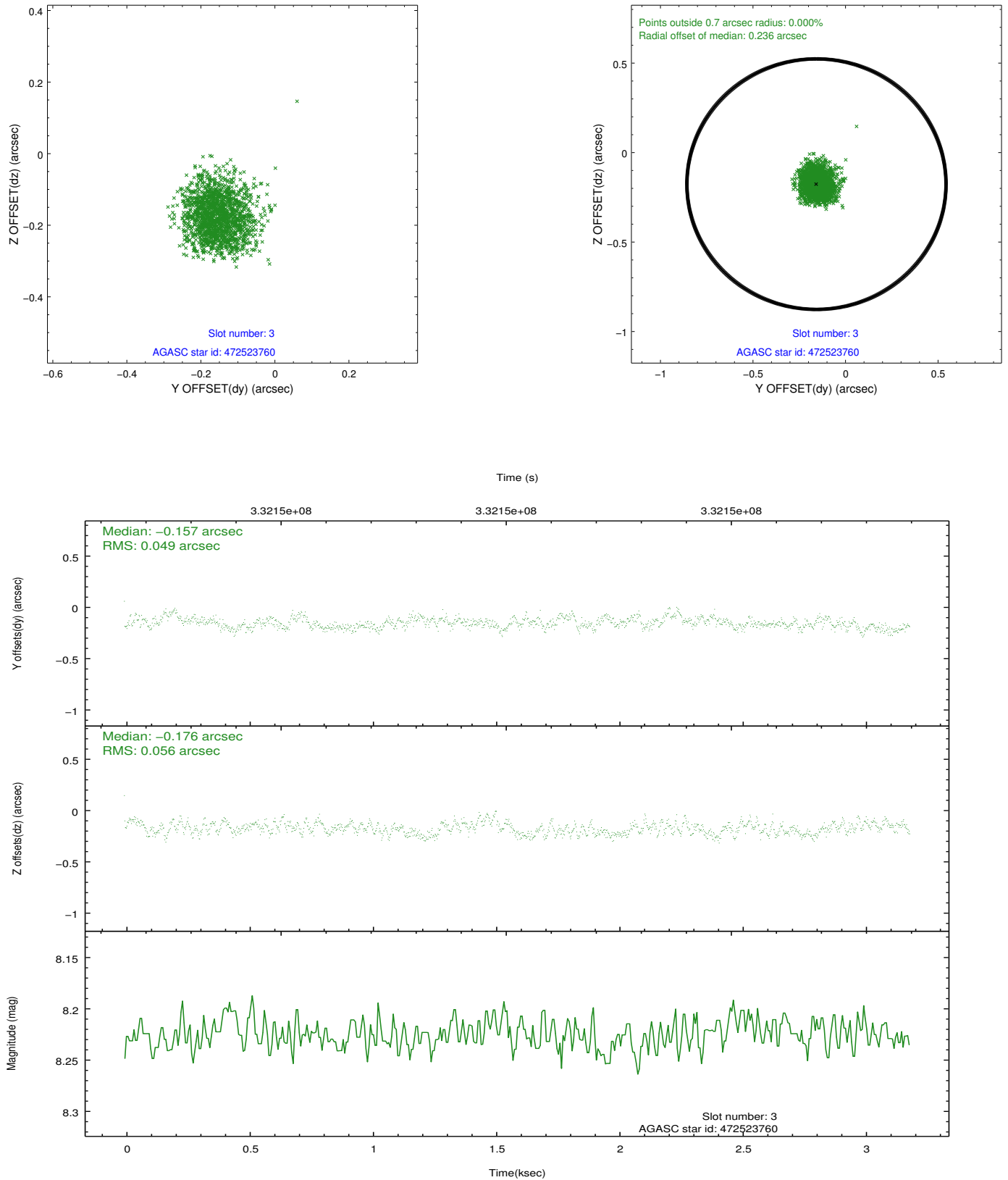


Slot Statistics

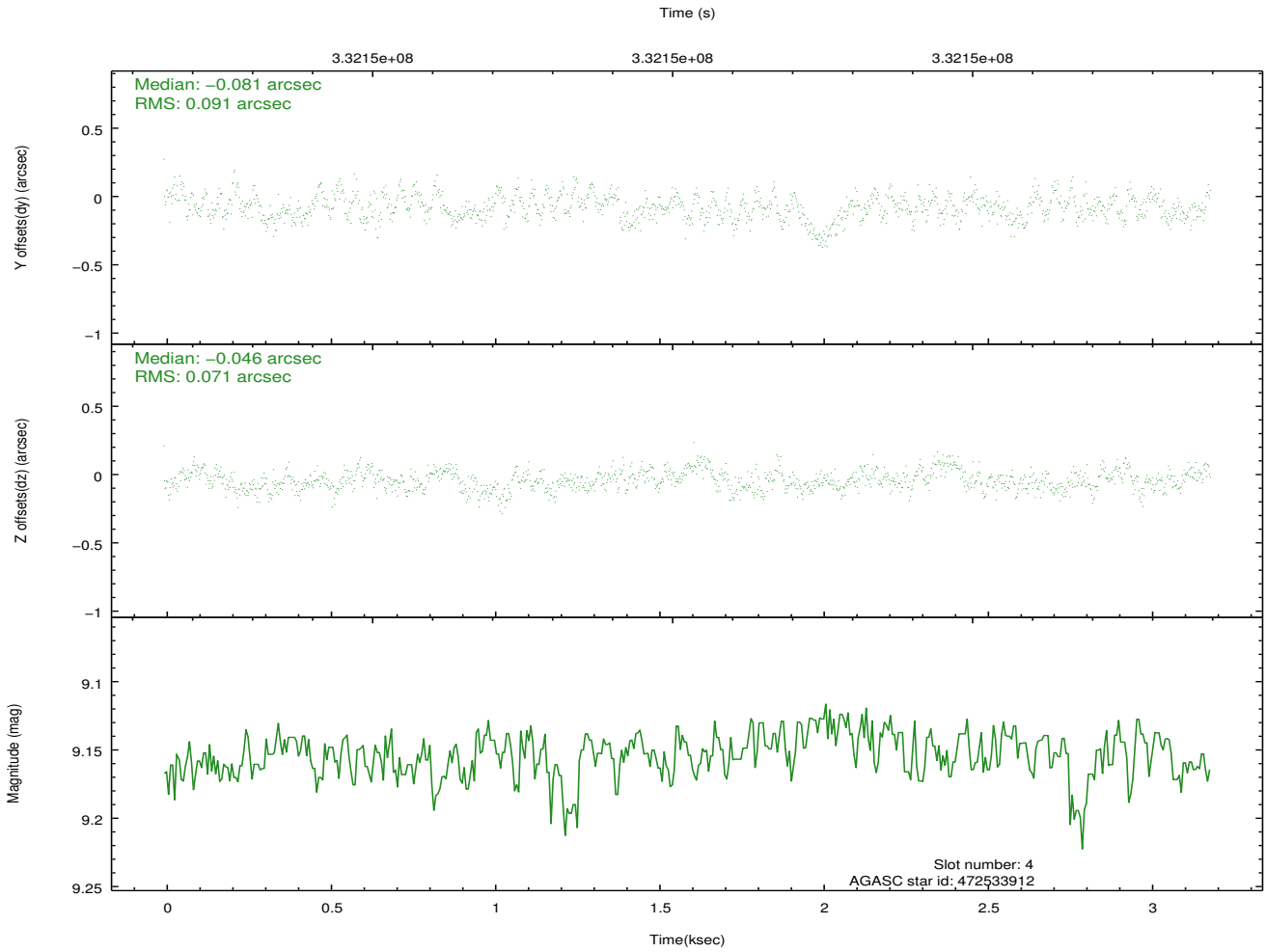
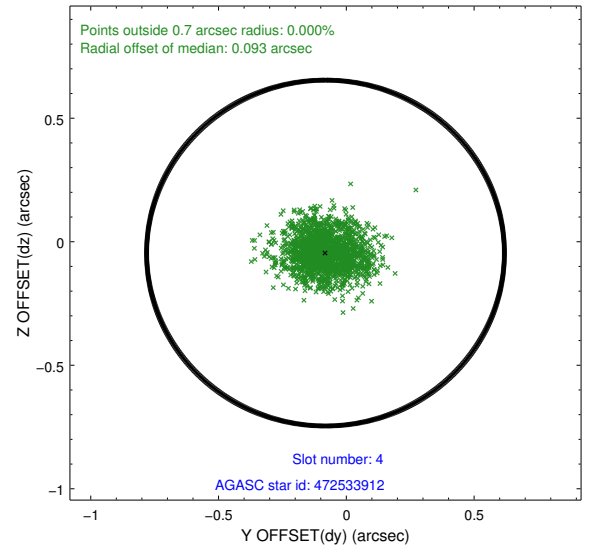
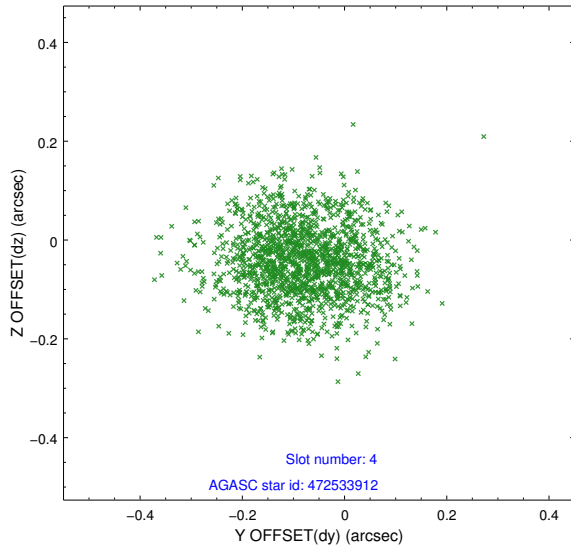
slot	status	id	mag	n_pts	med_dy	med_dz	dr1	dr2	ra	dec	mean_y	mean_z
0	FID	HRC-S-1	6.99	778	-0.190	0.077	0.009	0.019	0.000000	0.000000	-1168.67	-625.50
1	FID	HRC-S-3	7.01	778	0.454	-0.413	0.010	0.020	0.000000	0.000000	-1172.57	402.72
2	FID	HRC-S-4	6.91	778	0.123	0.036	0.005	0.009	0.000000	0.000000	1228.05	407.81
3	GUIDE	472523760	8.22	1554	-0.157	-0.176	0.079	0.126	331.645363	45.403260	344.21	1835.58
4	GUIDE	472533912	9.15	1554	-0.081	-0.046	0.123	0.199	331.791136	46.368695	2216.27	-1114.46
5	GUIDE	472654568	9.42	1548	0.104	-0.112	0.119	0.189	332.194449	45.063576	-1504.96	1924.30
6	GUIDE	472655152	9.42	1555	0.175	0.017	0.117	0.190	332.504239	45.862991	-311.85	-805.81
7	GUIDE	472665256	9.01	1553	-0.044	0.307	0.094	0.158	332.808125	46.195041	-147.78	-2214.14

2.4 Star Slots

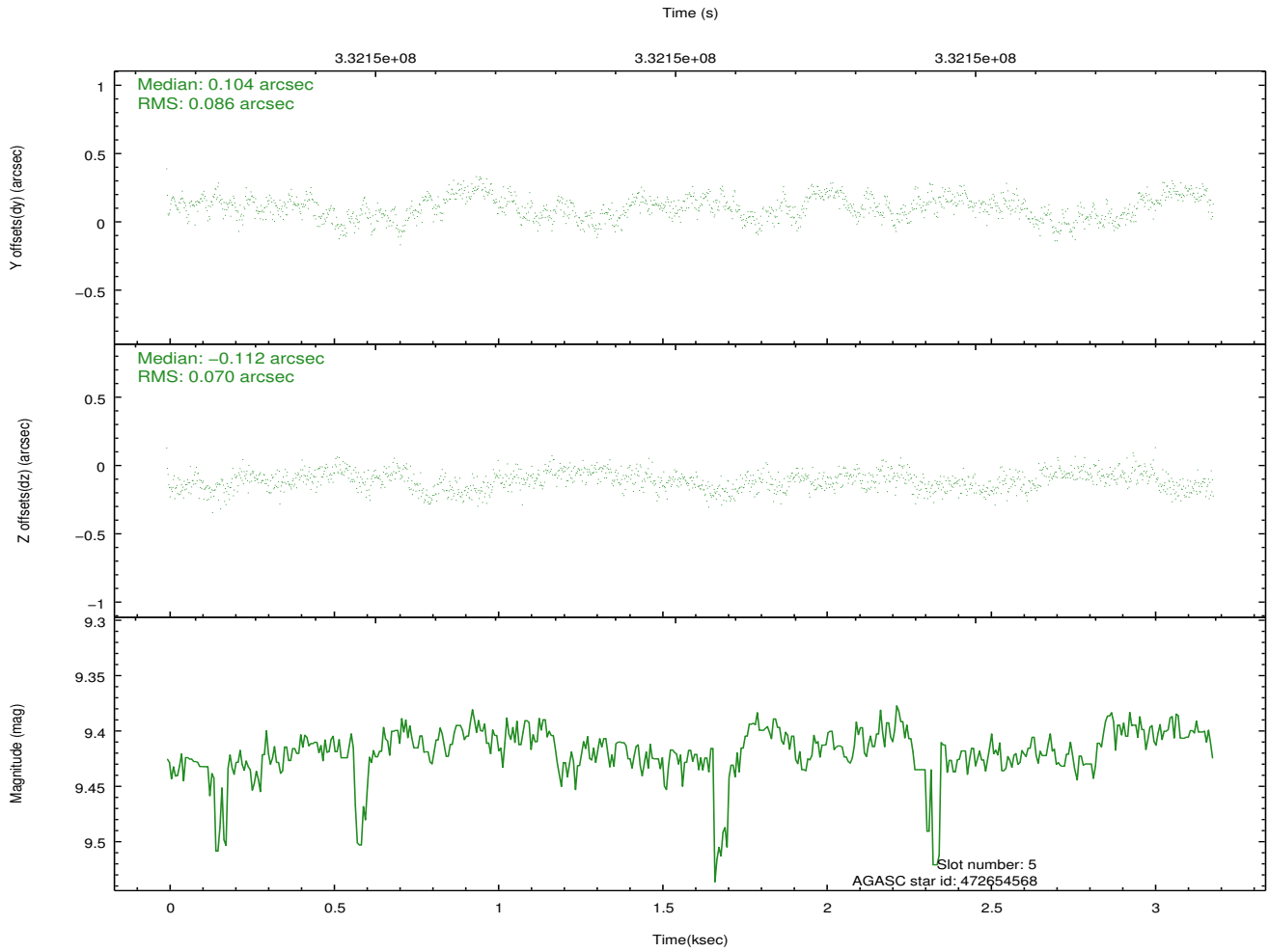
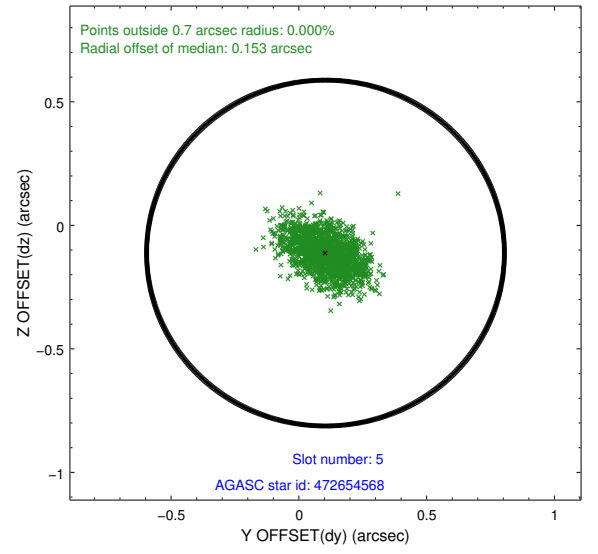
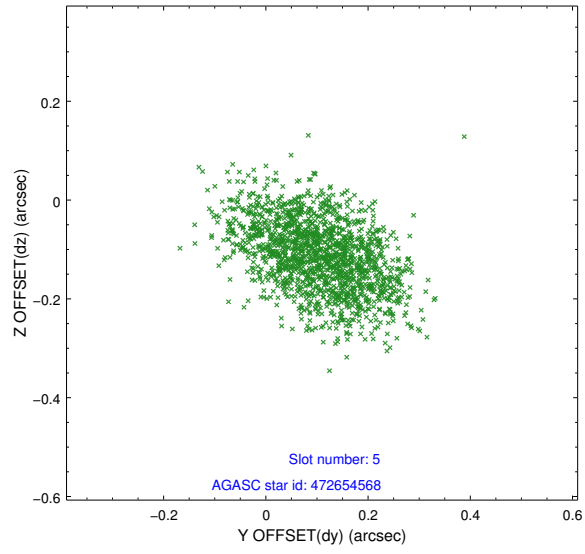
2.4.1 Slot 3



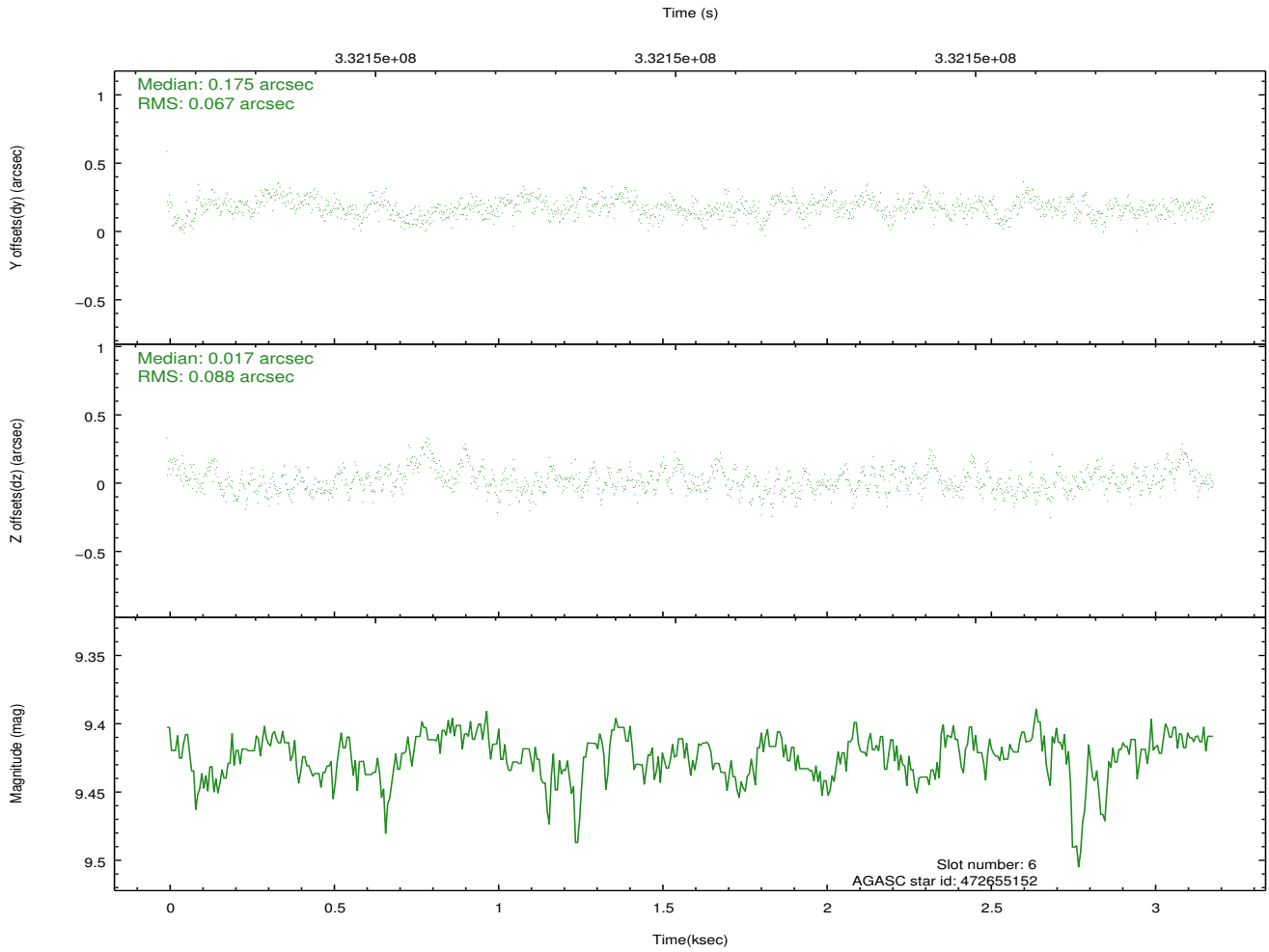
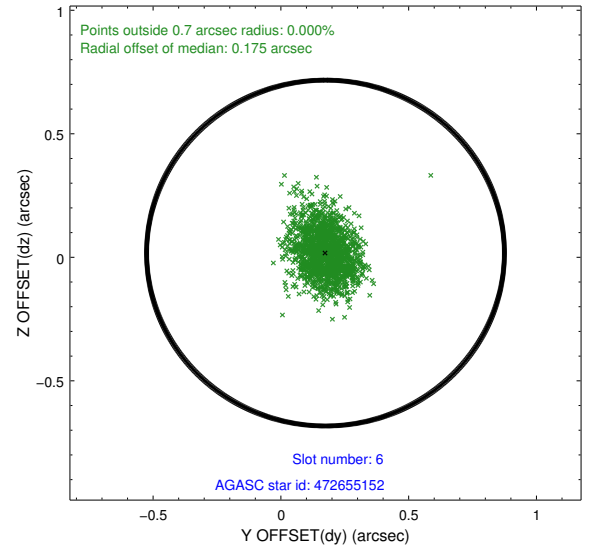
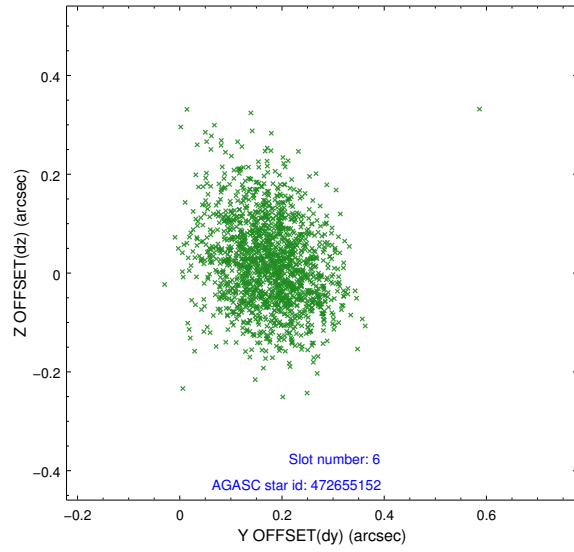
2.4.2 Slot 4



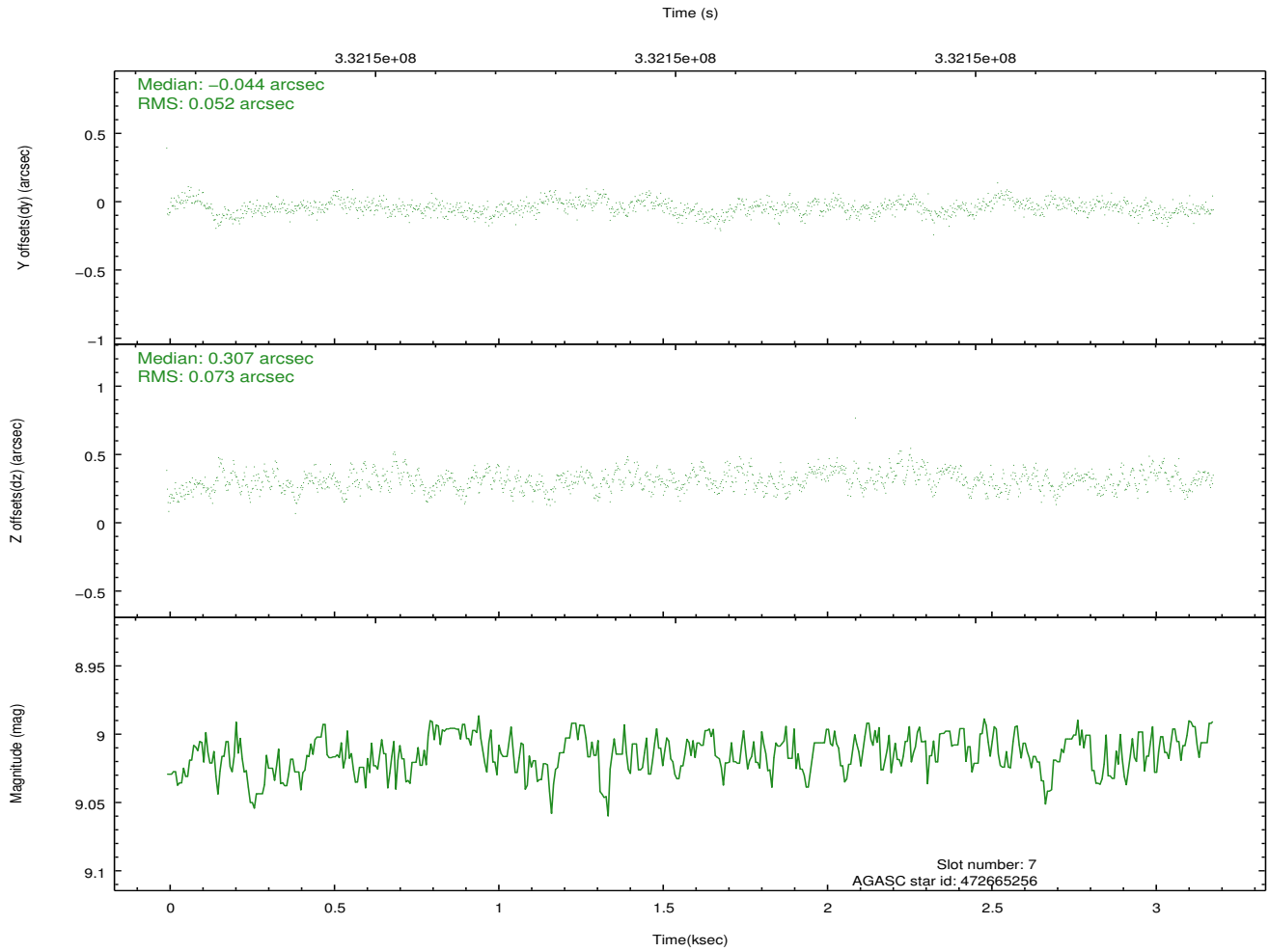
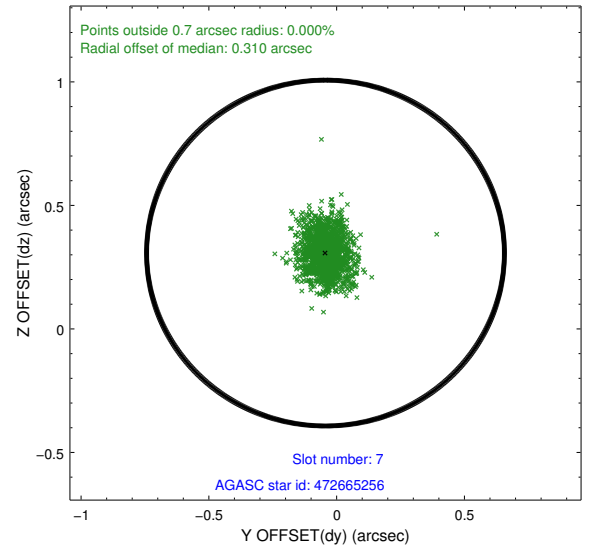
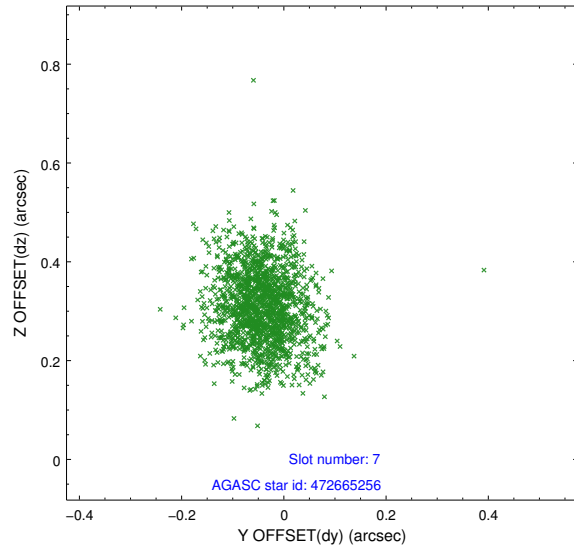
2.4.3 Slot 5



2.4.4 Slot 6

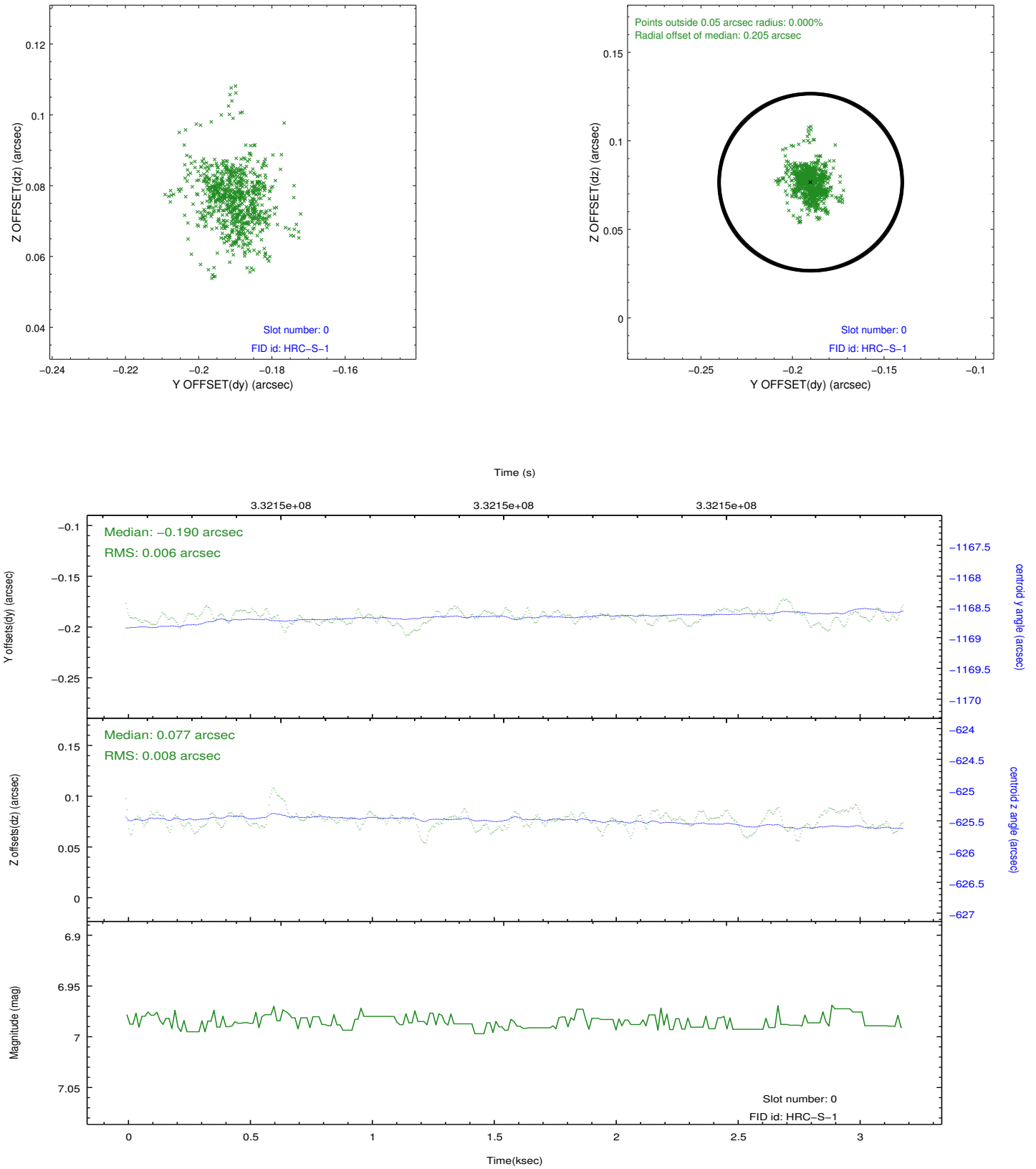


2.4.5 Slot 7

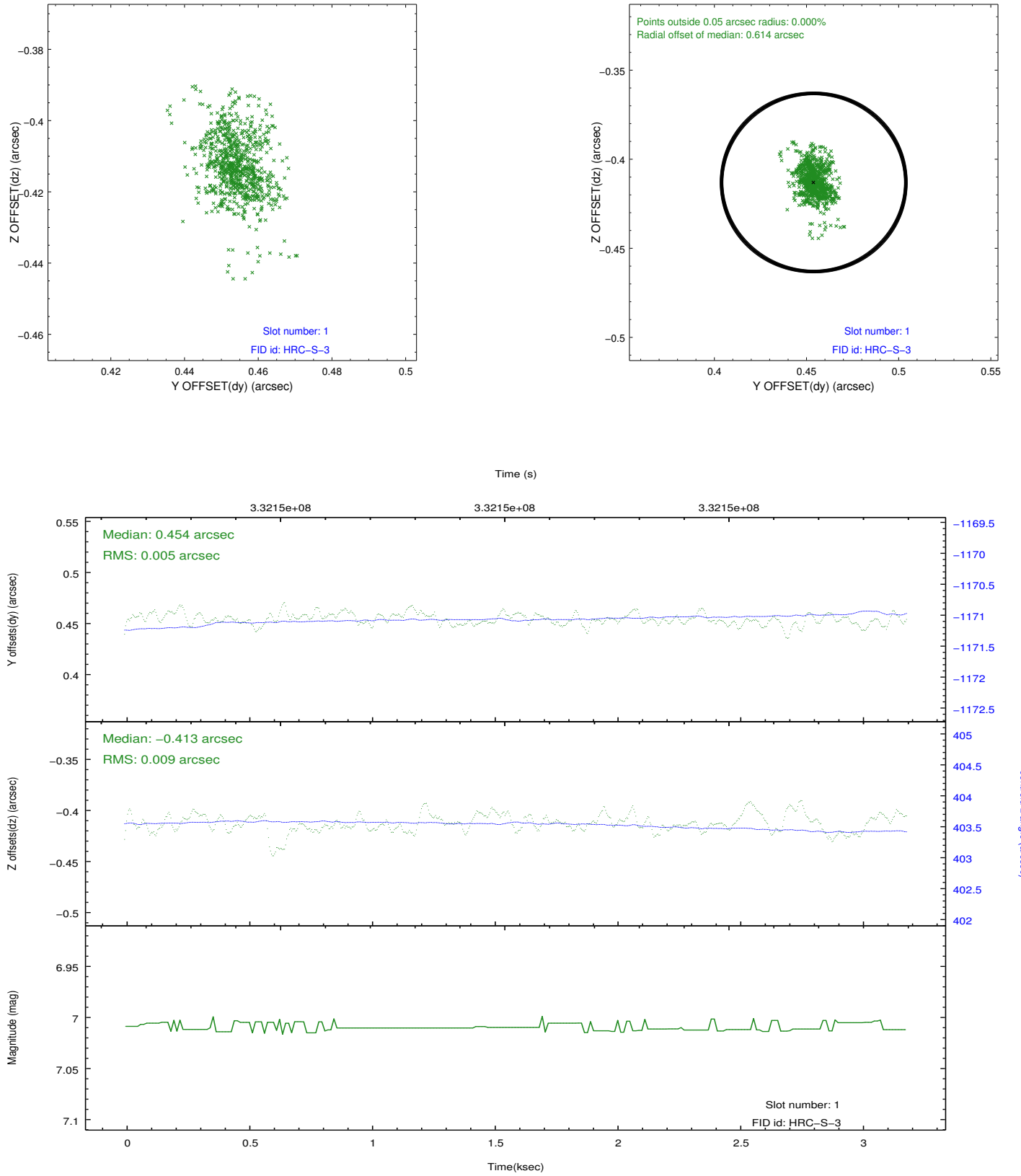


2.5 FID Slots

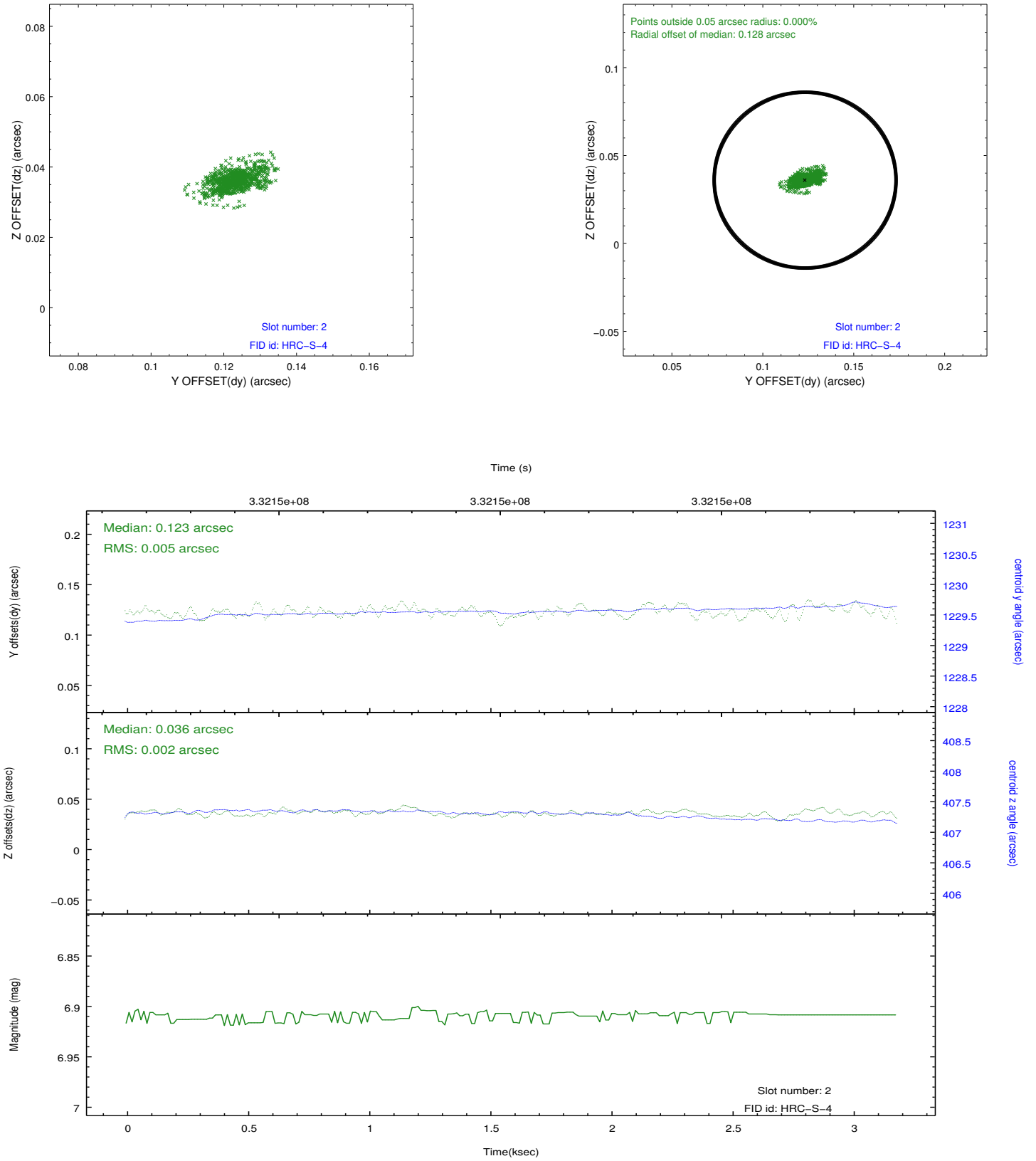
2.5.1 Slot 0



2.5.2 Slot 1



2.5.3 Slot 2



A Summary

A.1 Status

V&V Scientist	Joy Nichols
V&V Date (YYYY-MM-DD)	2012.08.23
V&V Edition	1
V&V Disposition and Status	OK
V&V Charge Time	3.1849314

A.2 Comments

Obsid 9683 is a 3ks HRC-S CAL observation with a SIM offset of -7.99 [mm]. The fid median radial offset of 0.614 arcsec (slot 1) is acceptable for Aspect.