

V&V Reference Report

L2 ASCDS Version : 8.4.4

Observation 9634 - L2 Version 3
Chandra X-Ray Center

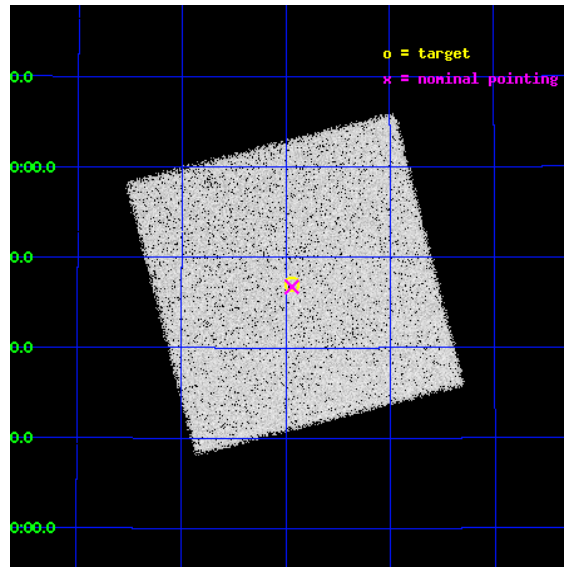
L2 Processing Date : Aug 12 2012

Contents

1	Front	2
2	OBI	3
2.1	OBI	3
2.1.1	Images	3
2.1.2	Parameters	4
2.1.3	Events	4
2.2	Compared Parameters	5
2.3	Aspect	6
2.4	Star Slots	9
2.4.1	Slot 3	9
2.4.2	Slot 4	10
2.4.3	Slot 5	11
2.4.4	Slot 6	12
2.4.5	Slot 7	13
2.5	FID Slots	14
2.5.1	Slot 0	14
2.5.2	Slot 1	15
2.5.3	Slot 2	16
A	Summary	17
A.1	Status	17
A.2	Comments	17

1 Front

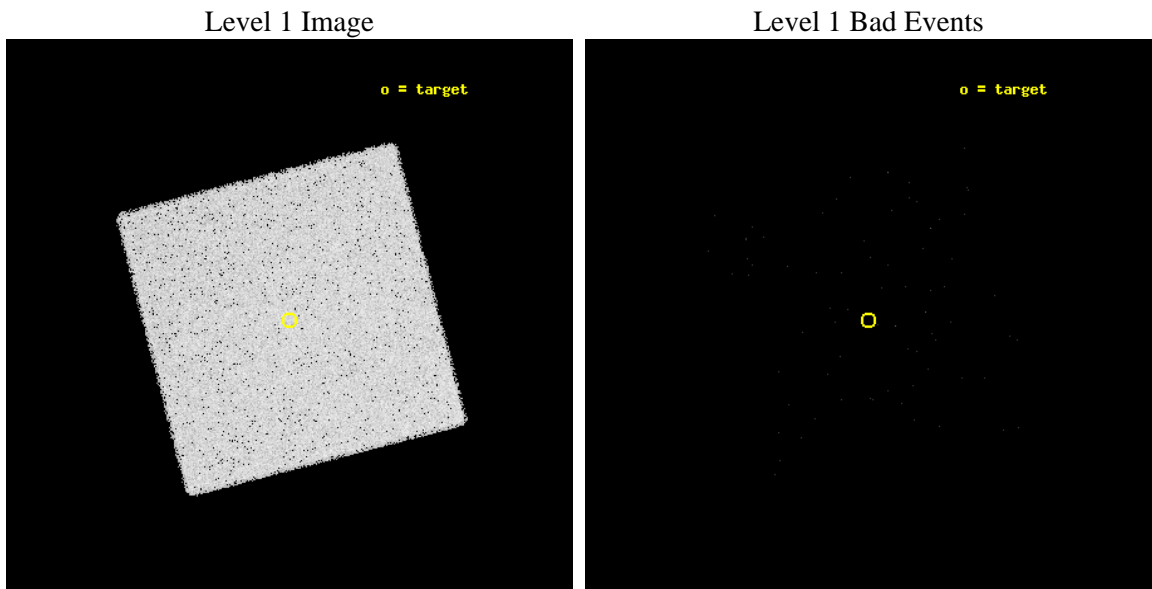
seq_num	290757	Sequence number
obs_id	9634	Observation id
title	AO9 Measurements of the optical/UV Transmission of the HRC Filters.	
observer	Dr. CXC Calibration	Principal investigator
object	Vega	Source name
ra_targ	279.235	Observer's specified target RA [deg]
dec_targ	38.783778	Observer's specified target Dec [deg]
ra_nom	279.2356240195	Nominal RA [deg]
dec_nom	38.779443849885	Nominal Dec [deg]
roll_nom	300.53451674959	Nominal Roll [deg]
revision	3	Processing version of data
ontime	2162.7501066923	[s]
liveltime	2139.2319428955	Ontime multiplied by DTCOR
l2events	142240	Number of level 2 events



2 OBI

2.1 OBI

2.1.1 Images



2.1.2 Parameters

obi_num	0	Obi number	sched_exp_time	2000.000000	[s] Scheduled observation exposure time
ascdsver	8.4.5	Processing system revision	ontime	2162.7501066923	[s]
caldbver	4.5.1.1	 	l1events	301992	Number of level 1 events
date	2012-08-12T22:17:30	Date and time of file creation			
revision	3	Processing version of data			

2.1.3 Events

Level 1 Events

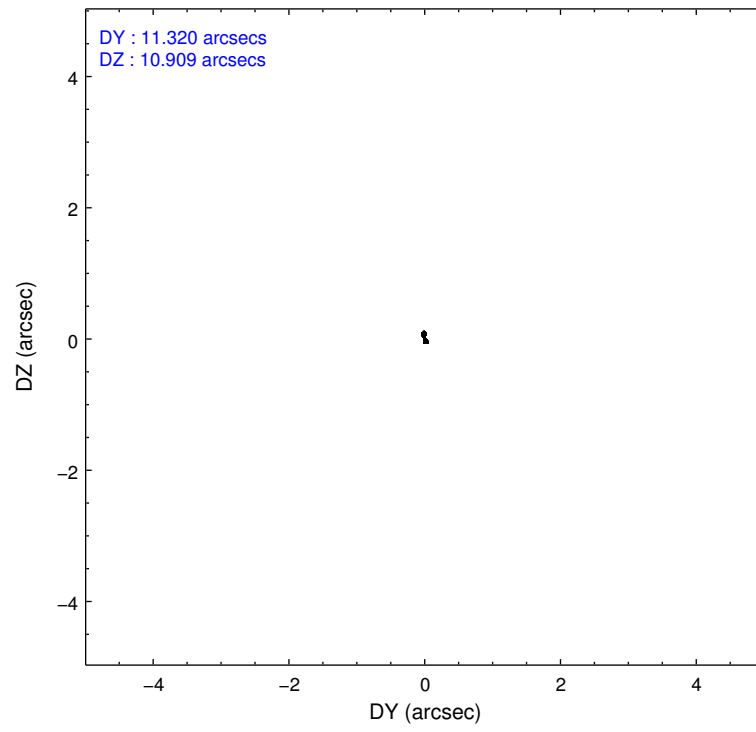
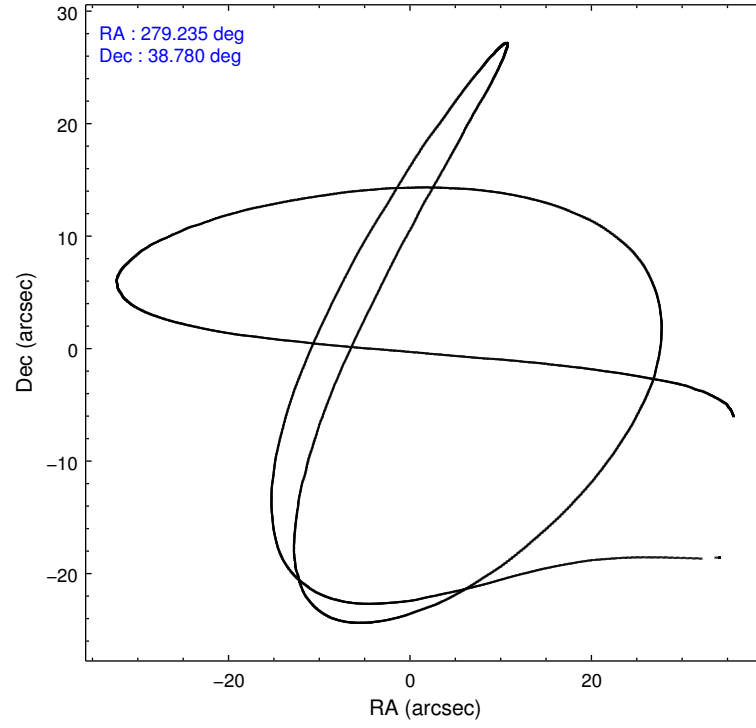
	segment 0
level 1 events	301992
rejected events	94509
rejected %	31%

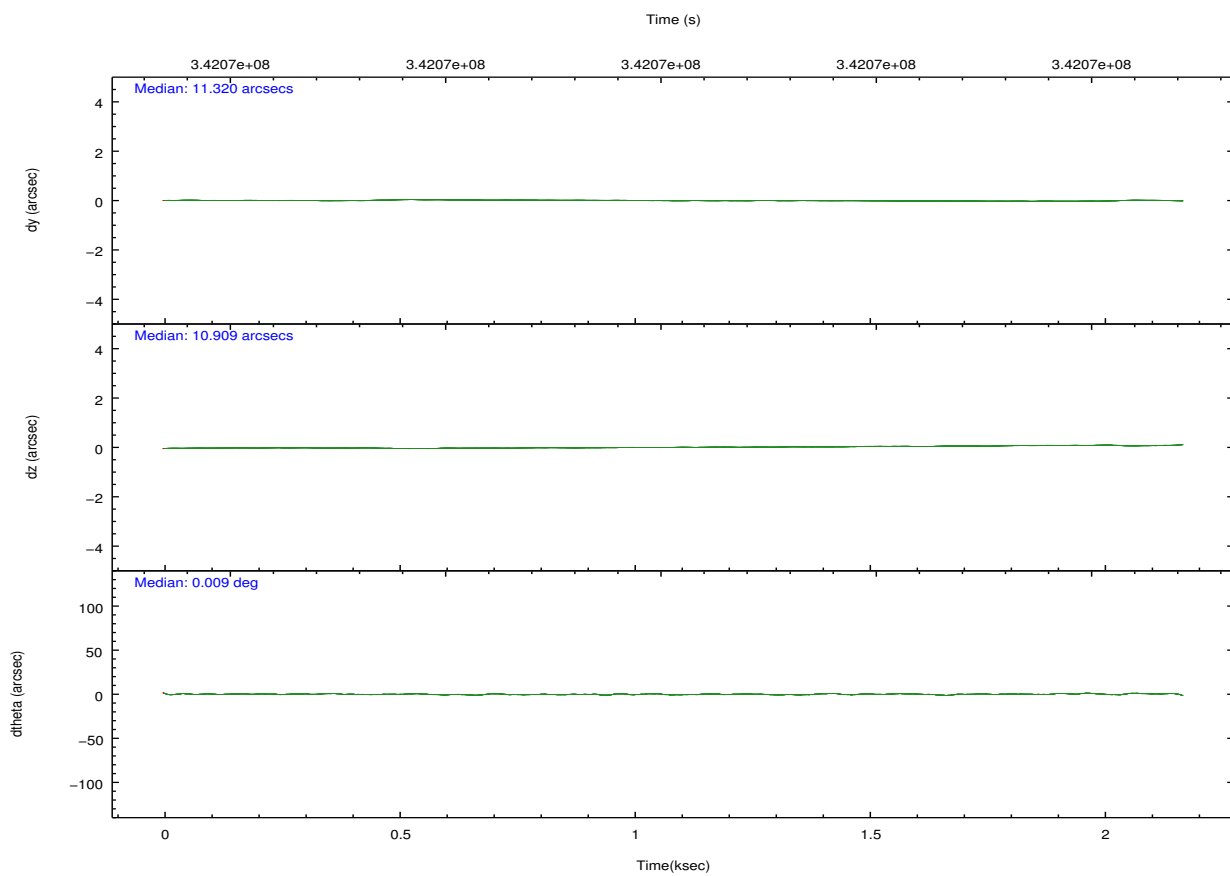
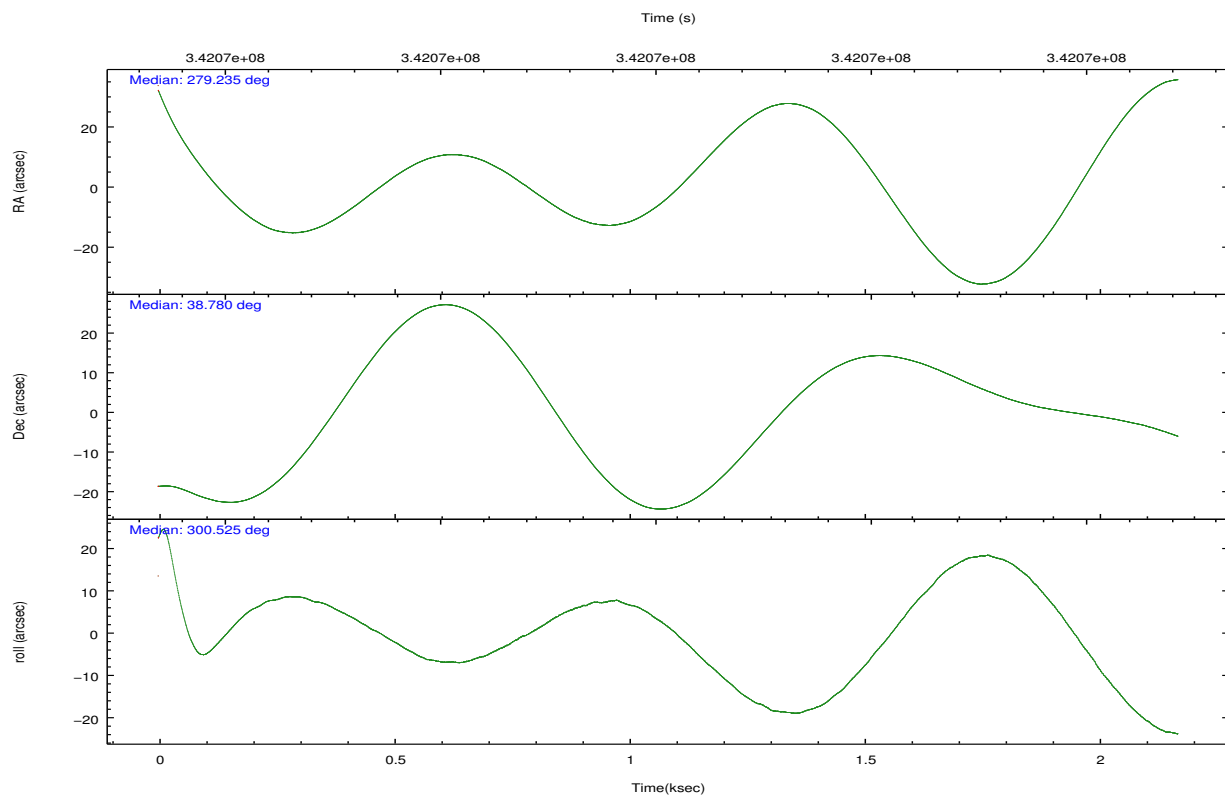
2.2 Compared Parameters

Parameter	Planned	Actual
Instrument	HRC	HRC
Detector	HRC-I	HRC-I
Grating	NONE	NONE
Data mode	OBSERVING	OBSERVING
Observation mode	POINTING	POINTING
[deg] Pointing RA	279.205063	279.2356240195
[deg] Pointing Dec	38.792431	38.77944384988512
[deg] Pointing Roll	300.648862	300.5345167495916
[s] Window start time (MET)	336614465.184000	336614465.184000
[s] Window stop time (MET)	344390465.184000	344390465.184000
[mm] SIM focus pos	-1.040293	-1.038866356238299
[mm] SIM defocus	0	0.001426264420575141
[mm] SIM translation stage pos	126.985494	126.9854943052878
[mm] SIM translation stage offset	0	-5.413686238853188e-06
[s] Observation start time (MET)	342065604.184000	342064496.19624
Observation start date	2008-11-03T02:12:19	2008-11-03T01:54:56
[s] Observation end time (MET)	342067604.184000	342067741.8589
Observation end date	2008-11-03T02:45:39	2008-11-03T02:49:01

Parameter	Planned	Actual
Obspar format version number	7	7
Obspar file type	PREDICTED	ACTUAL
Obspar update status	NONE	UPDATED

2.3 Aspect



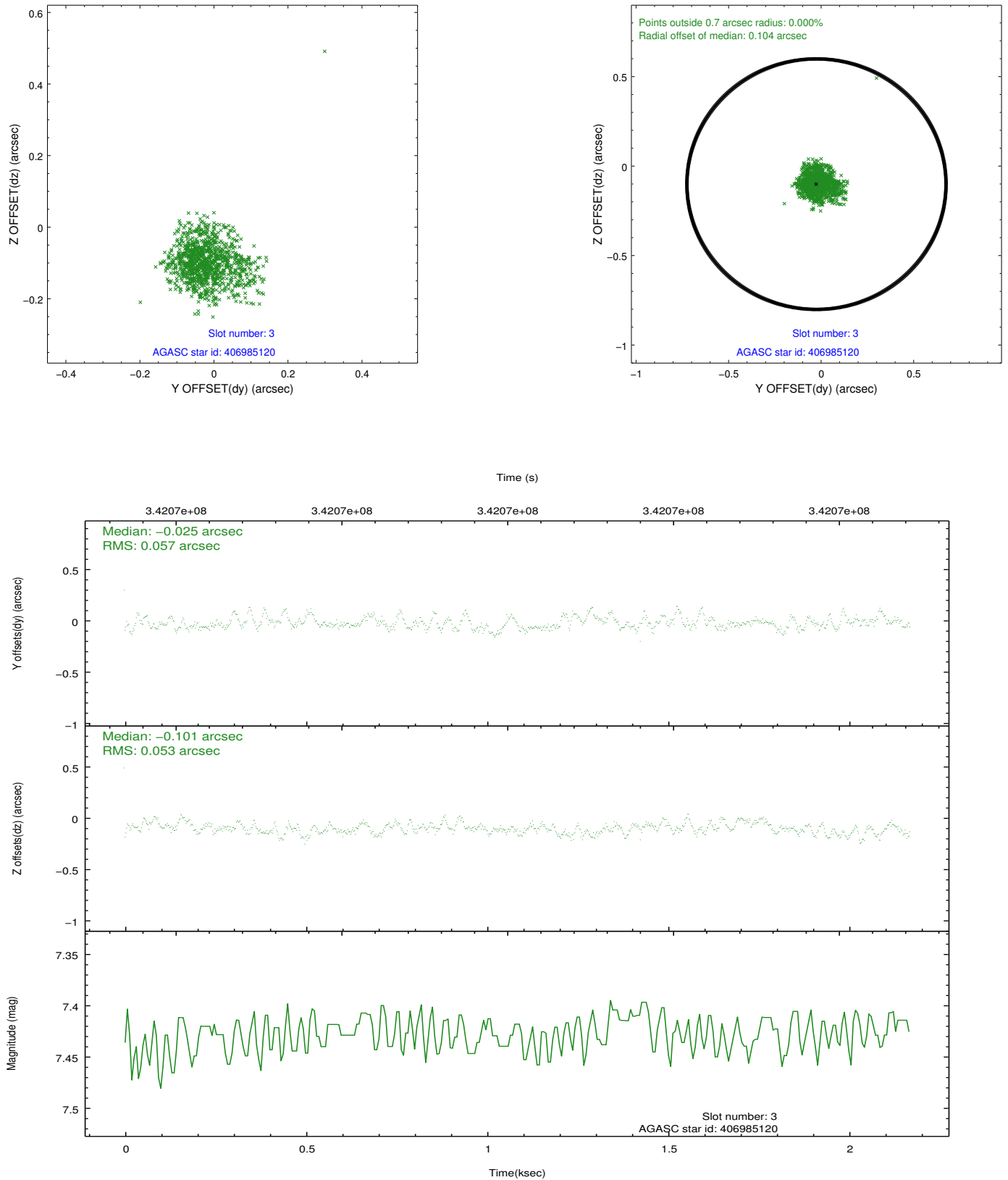


Slot Statistics

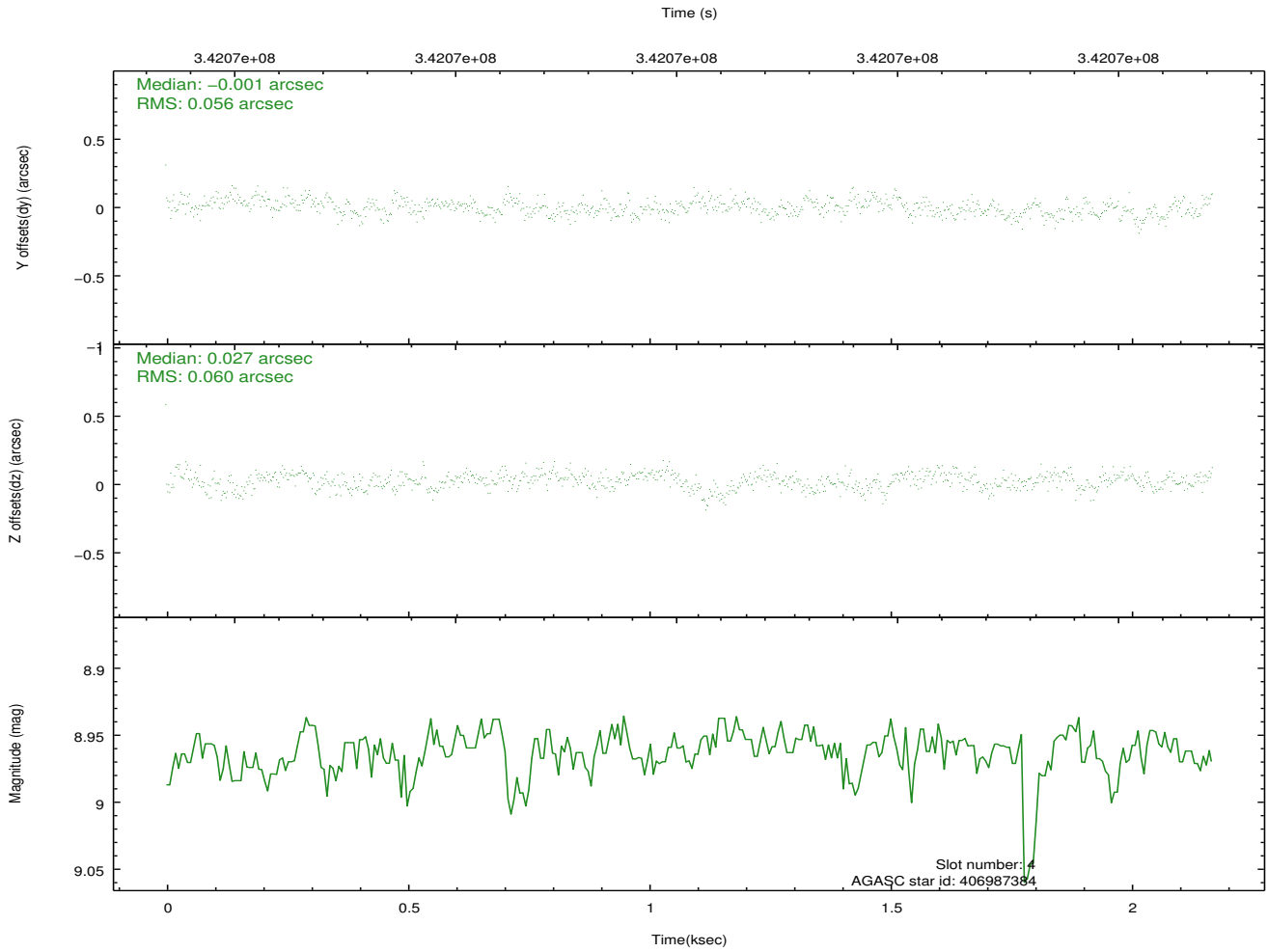
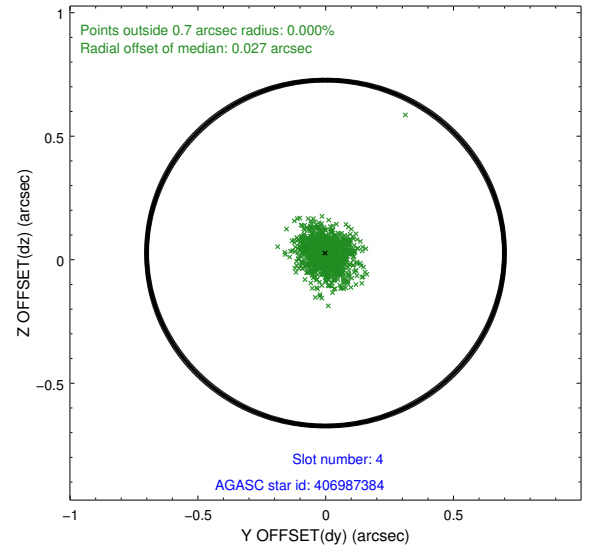
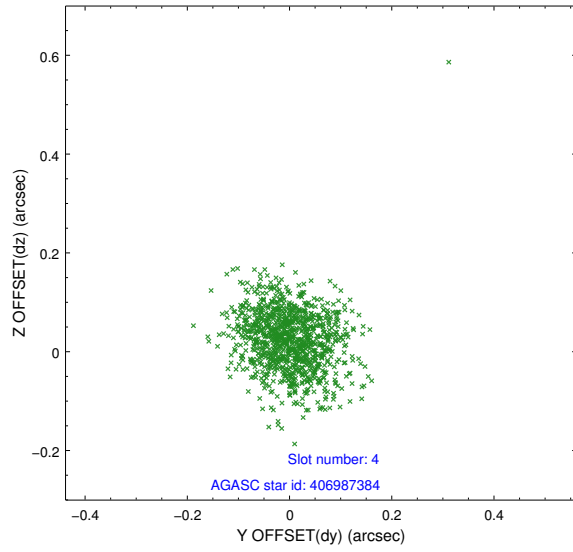
slot	status	id	mag	n_pts	med_dy	med_dz	dr1	dr2	ra	dec	mean_y	mean_z
0	FID	HRC-I-2	7.05	530	0.075	-0.110	0.006	0.010	0.000000	0.000000	845.68	-1300.61
1	FID	HRC-I-3	7.12	530	-0.144	0.018	0.006	0.011	0.000000	0.000000	-1194.06	1003.20
2	FID	HRC-I-4	7.04	530	0.187	0.005	0.006	0.009	0.000000	0.000000	1273.71	1005.13
3	GUIDE	406985120	7.43	1059	-0.025	-0.101	0.083	0.129	278.839732	38.894839	-840.42	-690.81
4	GUIDE	406987384	8.96	1058	-0.001	0.027	0.085	0.141	278.815518	38.115336	1532.41	-2189.98
5	GUIDE	406989616	8.22	1059	0.115	0.050	0.068	0.106	279.202881	38.520843	839.88	-504.50
6	GUIDE	407521232	8.64	1059	0.021	-0.059	0.087	0.145	279.628883	39.431715	-1380.92	2188.81
7	GUIDE	406987272	6.94	1058	-0.120	0.086	0.062	0.106	278.536588	38.437504	131.11	-2266.23

2.4 Star Slots

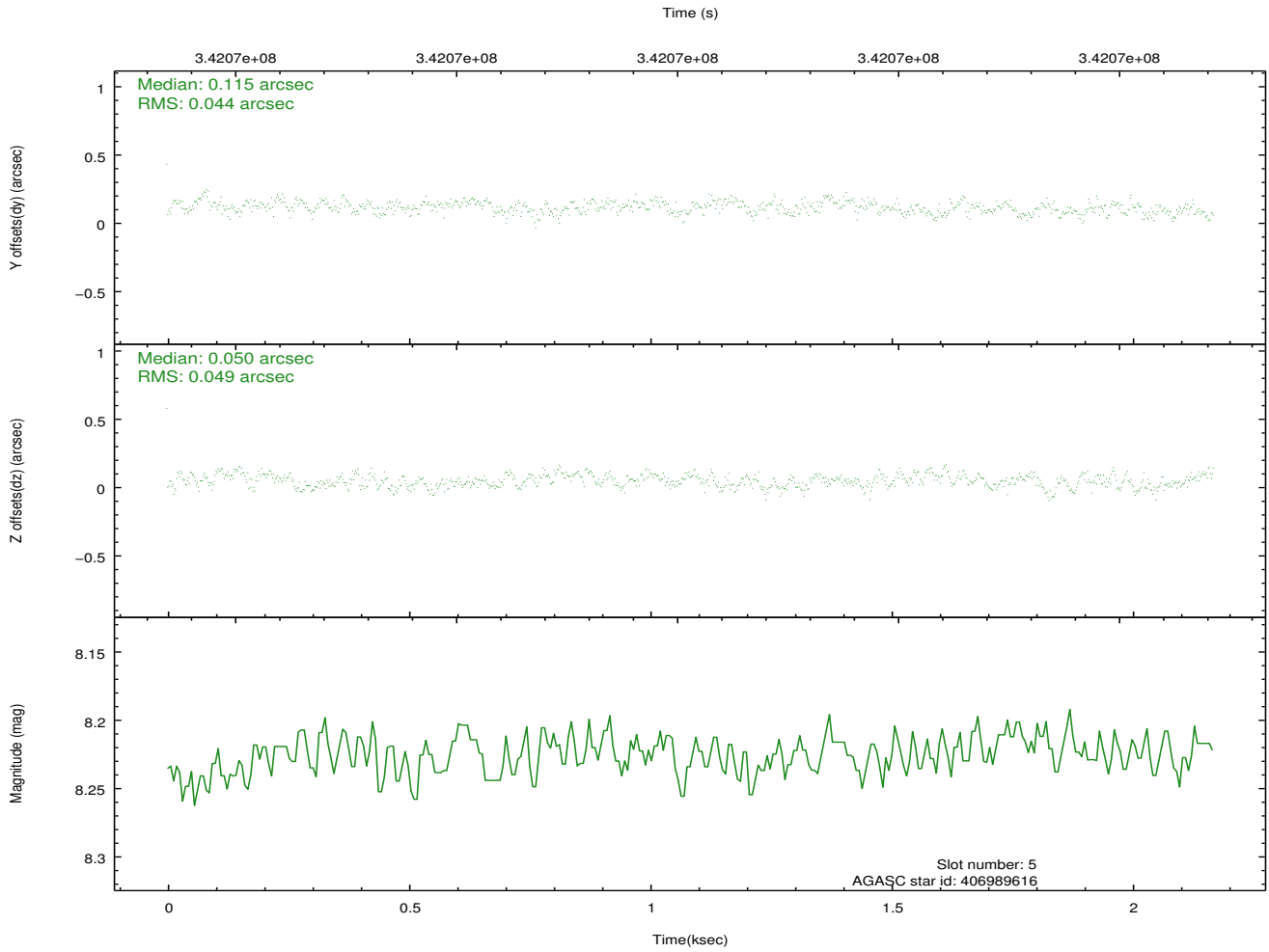
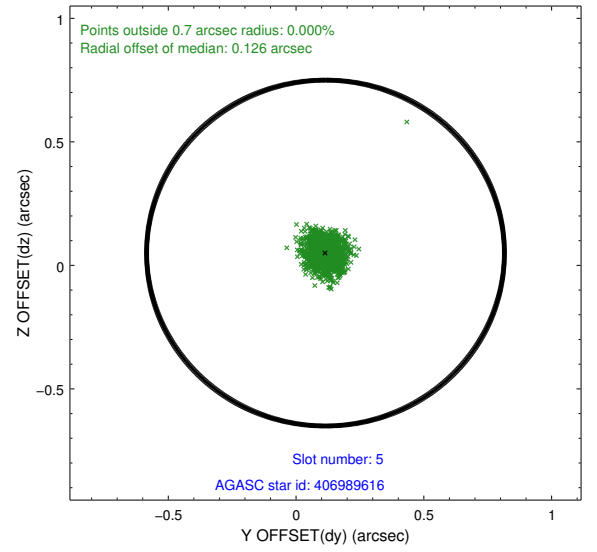
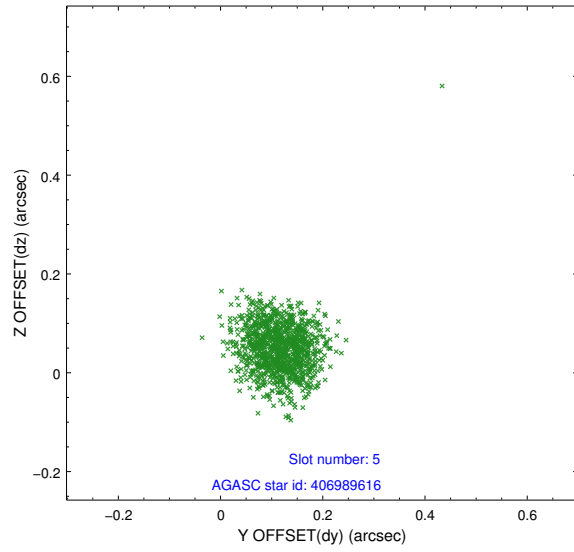
2.4.1 Slot 3



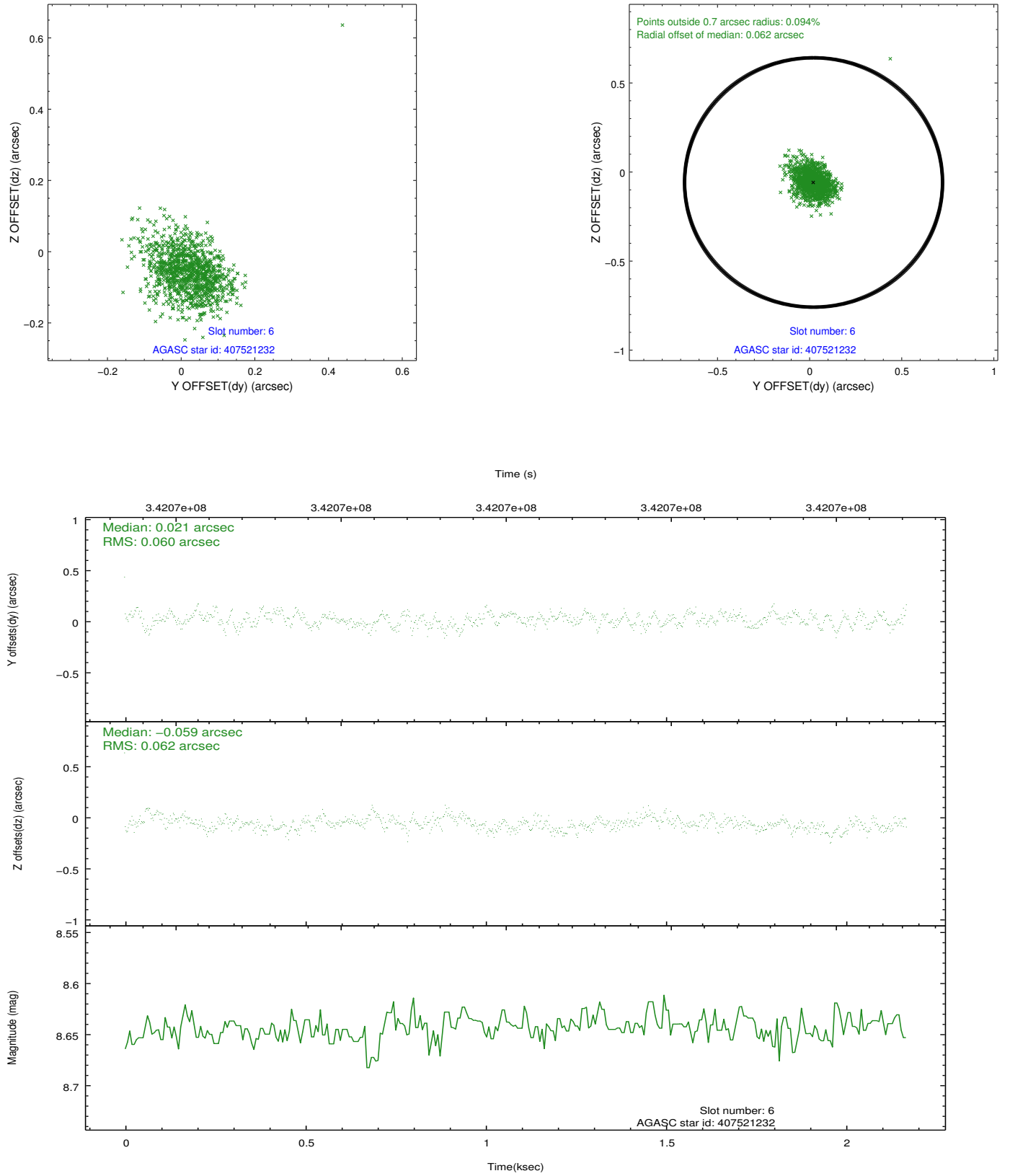
2.4.2 Slot 4



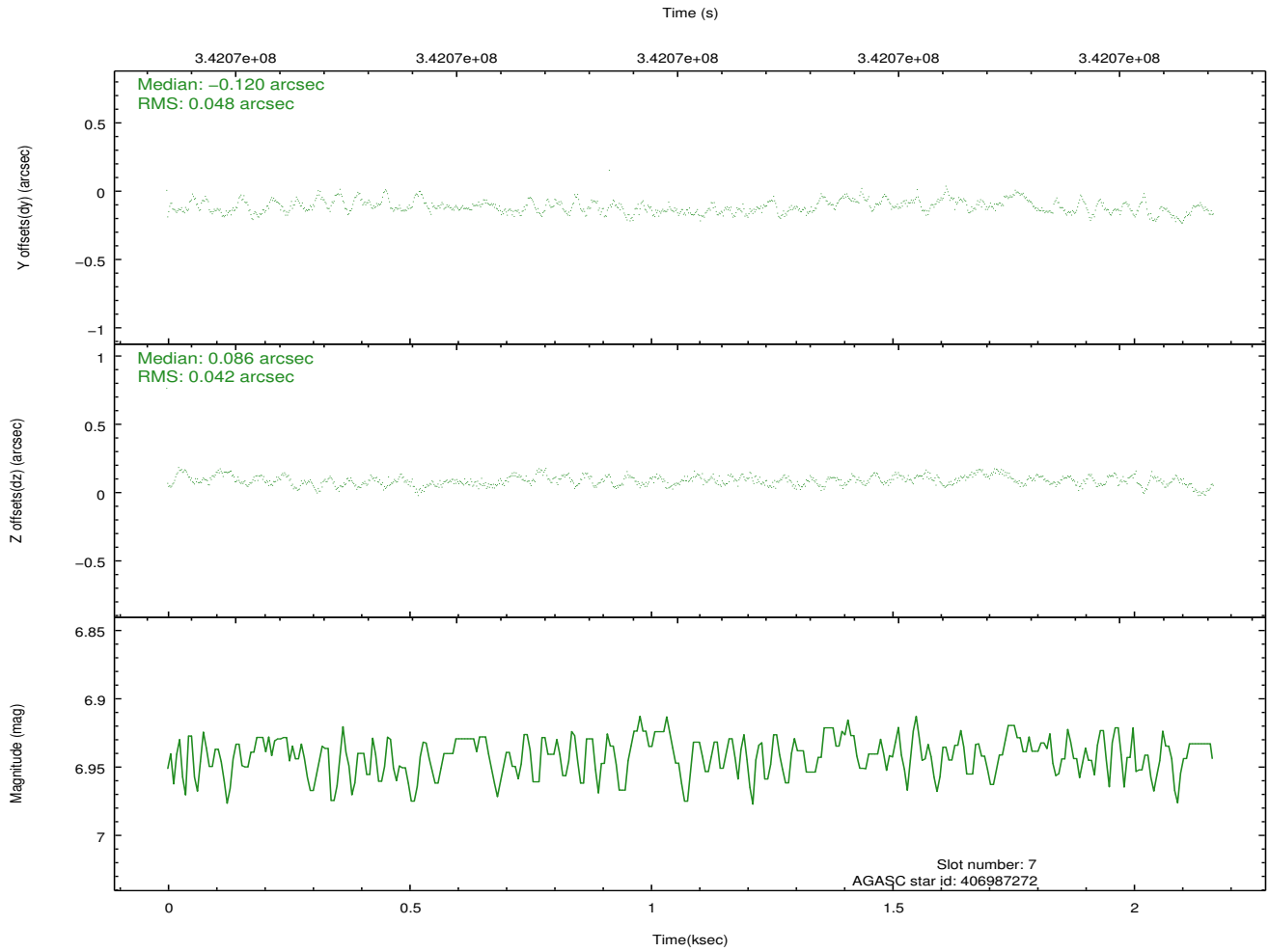
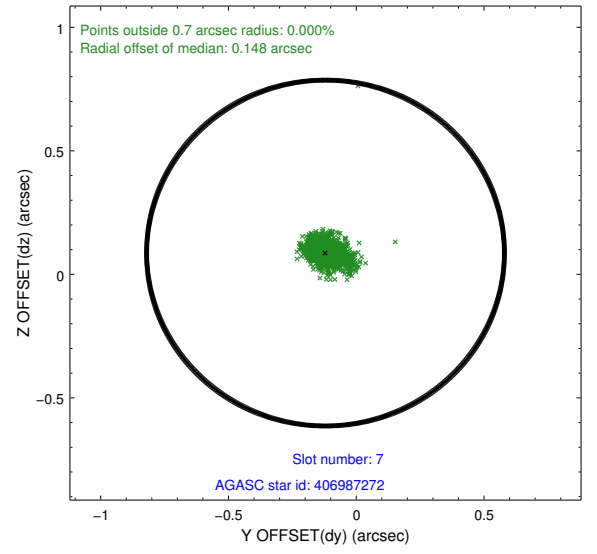
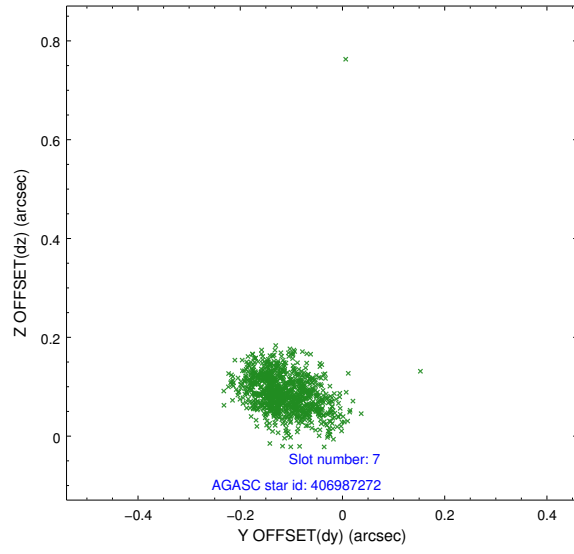
2.4.3 Slot 5



2.4.4 Slot 6

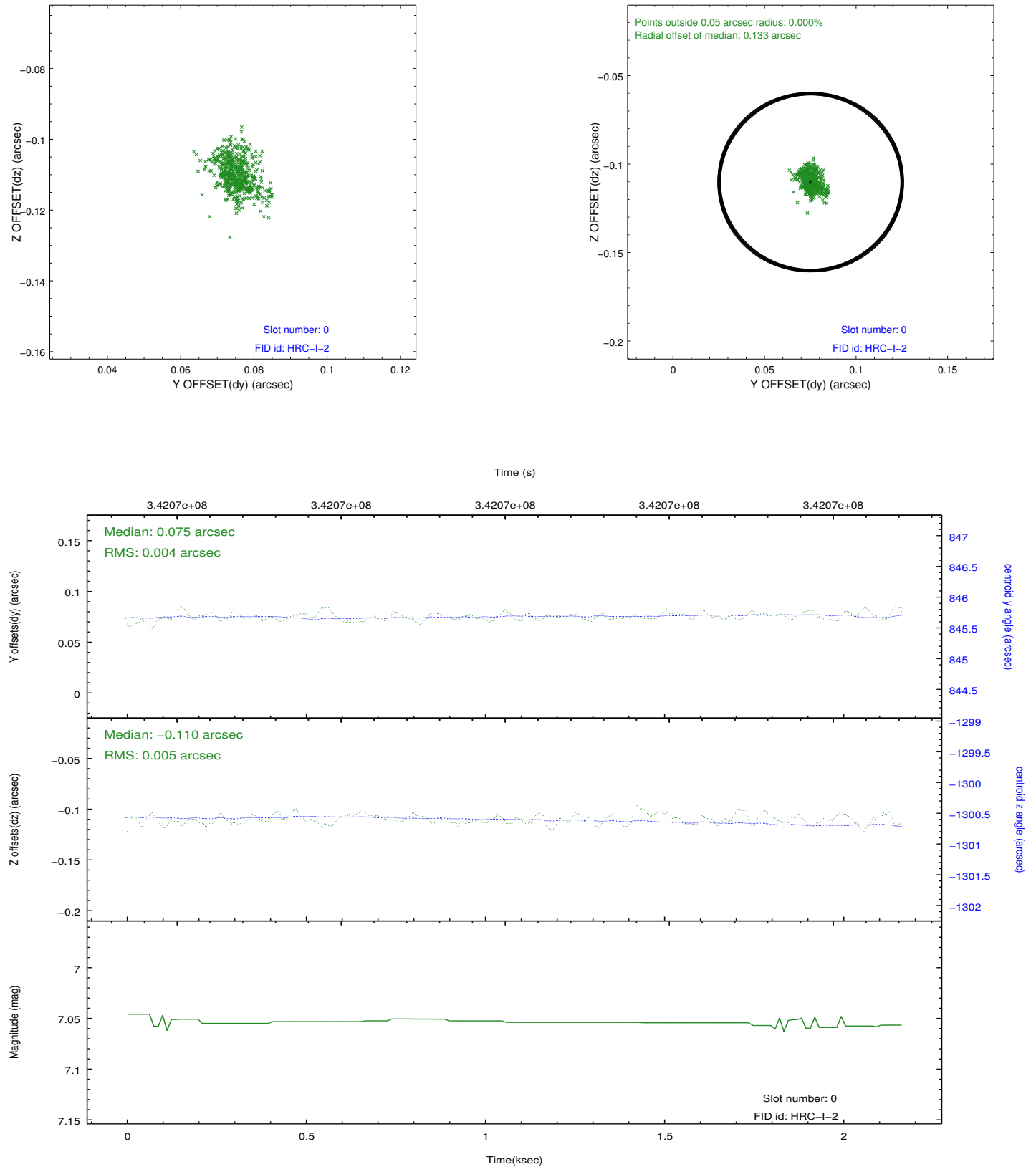


2.4.5 Slot 7

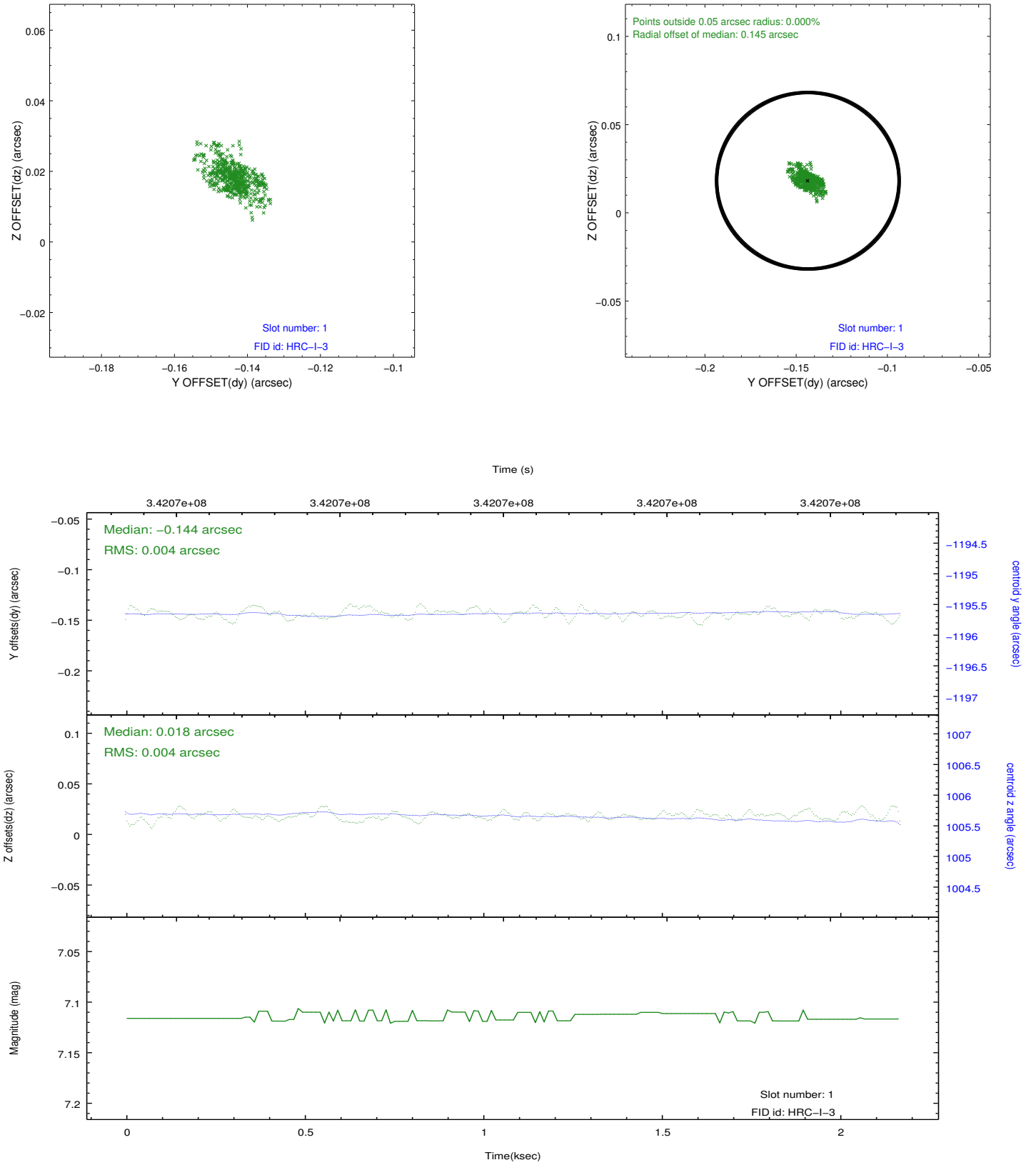


2.5 FID Slots

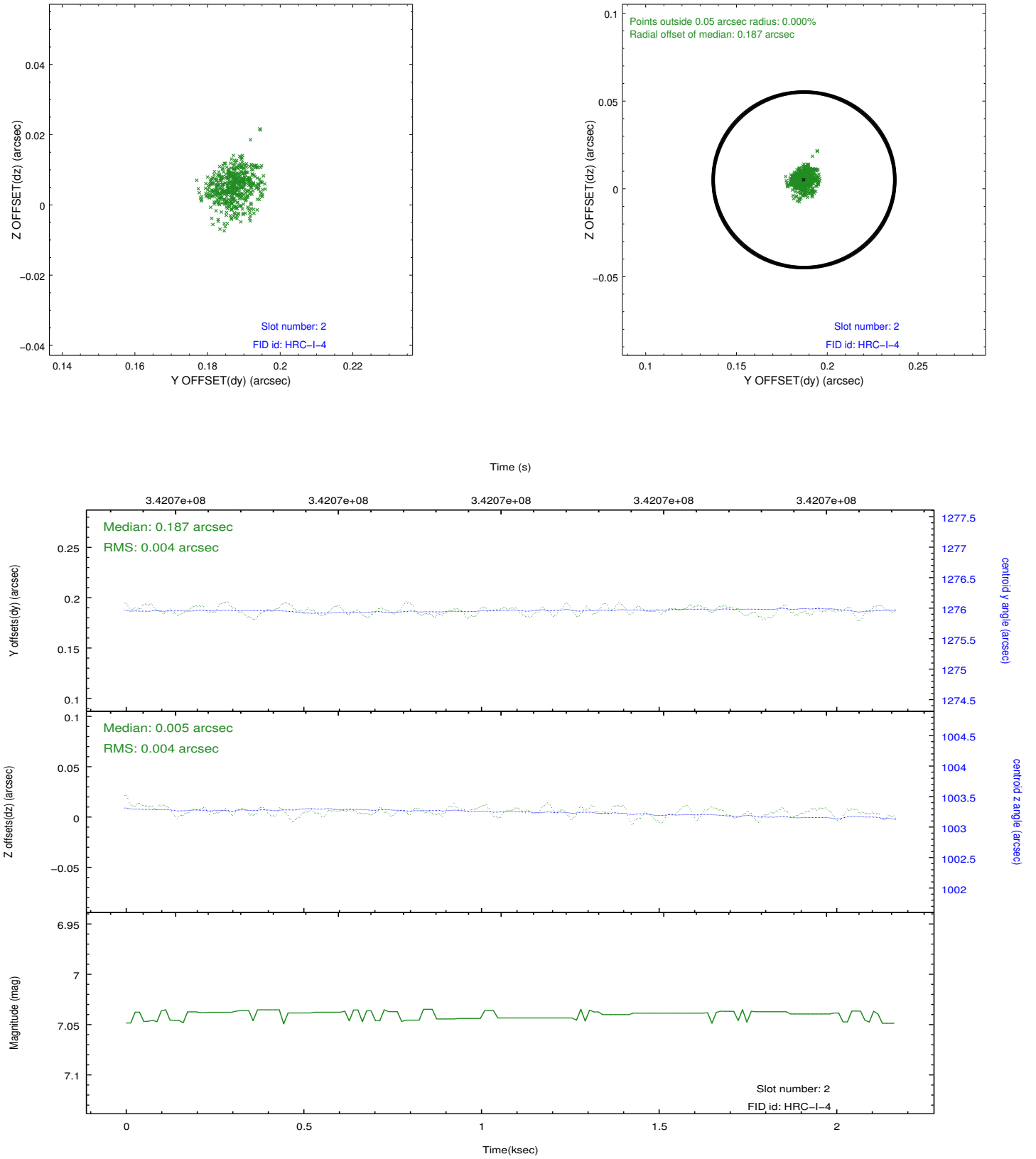
2.5.1 Slot 0



2.5.2 Slot 1



2.5.3 Slot 2



A Summary

A.1 Status

V&V Scientist	Jen Lauer
V&V Date (YYYY-MM-DD)	2012.08.20
V&V Edition	1
V&V Disposition and Status	OK
V&V Charge Time	2.1627501

A.2 Comments

Window preference met.