

V&V Reference Report

L2 ASCDS Version : 8.4.4

Observation 9619 - L2 Version 3
Chandra X-Ray Center

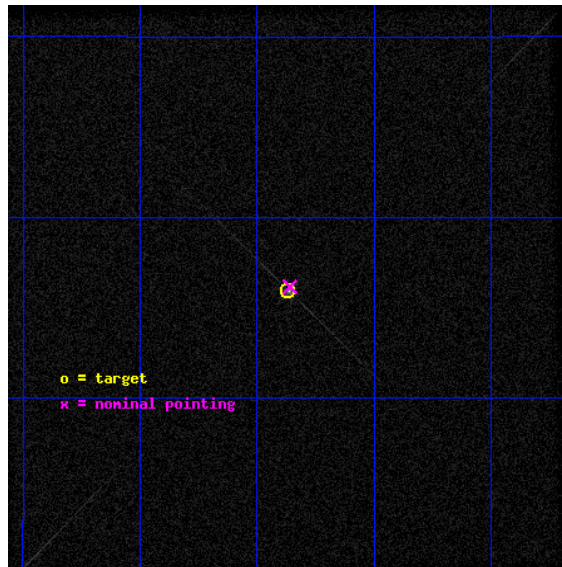
L2 Processing Date : Aug 12 2012

Contents

1	Front	2
2	OBI	3
2.1	OBI	3
2.1.1	Images	3
2.1.2	Parameters	4
2.1.3	Events	4
2.2	Compared Parameters	5
2.3	Aspect	6
2.4	Star Slots	9
2.4.1	Slot 3	9
2.4.2	Slot 4	10
2.4.3	Slot 5	11
2.4.4	Slot 6	12
2.4.5	Slot 7	13
2.5	FID Slots	14
2.5.1	Slot 0	14
2.5.2	Slot 1	15
2.5.3	Slot 2	16
3	Gratings	17
3.1	LETG Arm	17
A	Summary	19
A.1	Status	19
A.2	Comments	19

1 Front

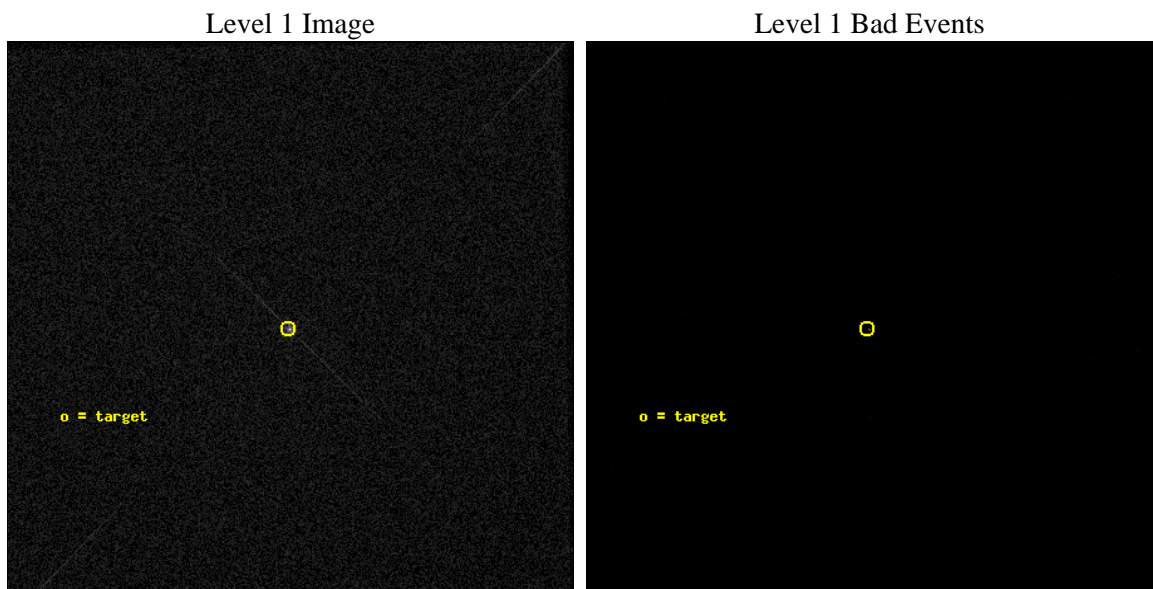
seq_num	290742	Sequence number
obs_id	9619	Observation id
title	AO9 Calibration Observations of HZ43	Proposal title
observer	Dr. CXC Calibration	Principal investigator
object	HZ43	Source name
ra_targ	199.092083	Observer's specified target RA [deg]
dec_targ	29.099	Observer's specified target Dec [deg]
ra_nom	199.09007128071	Nominal RA [deg]
dec_nom	29.102697798588	Nominal Dec [deg]
roll_nom	134.00163882106	Nominal Roll [deg]
revision	3	Processing version of data
ontime	2184.5313562155	[s]
livetime	2161.8683835156	Ontime multiplied by DTCOR
l2events	139037	Number of level 2 events



2 OBI

2.1 OBI

2.1.1 Images



2.1.2 Parameters

obi_num	0	Obi number	sched_exp_time	2000.000000	[s] Scheduled observation exposure time
ascdsver	8.4.5	Processing system revision	ontime	2184.5313562155	[s]
caldbver	4.5.1.1	 	l1events	293541	Number of level 1 events
date	2012-08-12T10:14:17	Date and time of file creation			
revision	3	Processing version of data			

2.1.3 Events

Level 1 Events

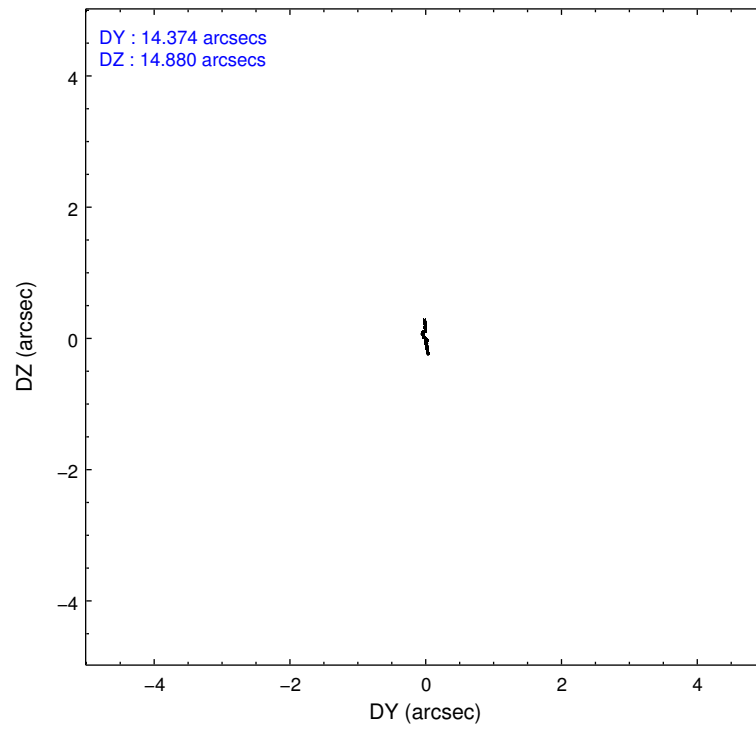
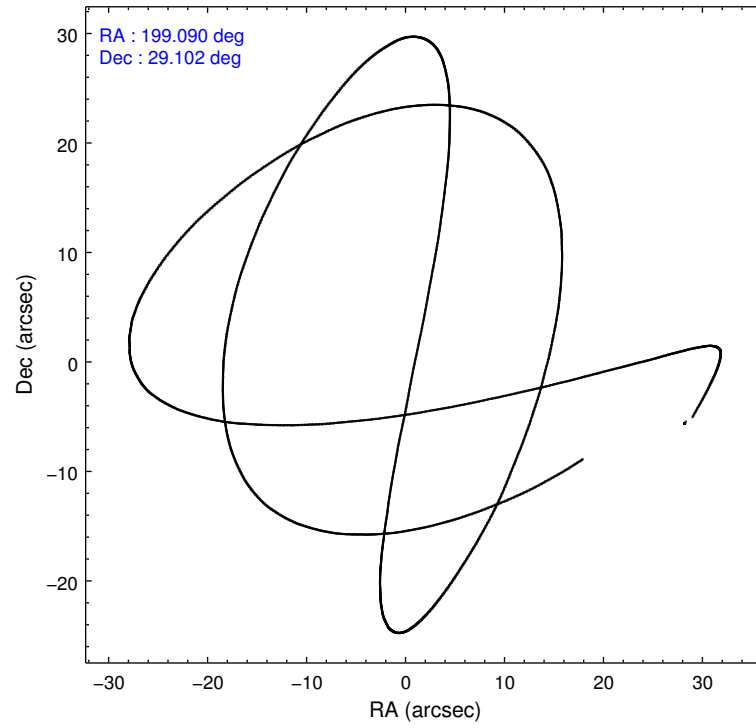
	segment 0
level 1 events	293541
rejected events	93367
rejected %	31%

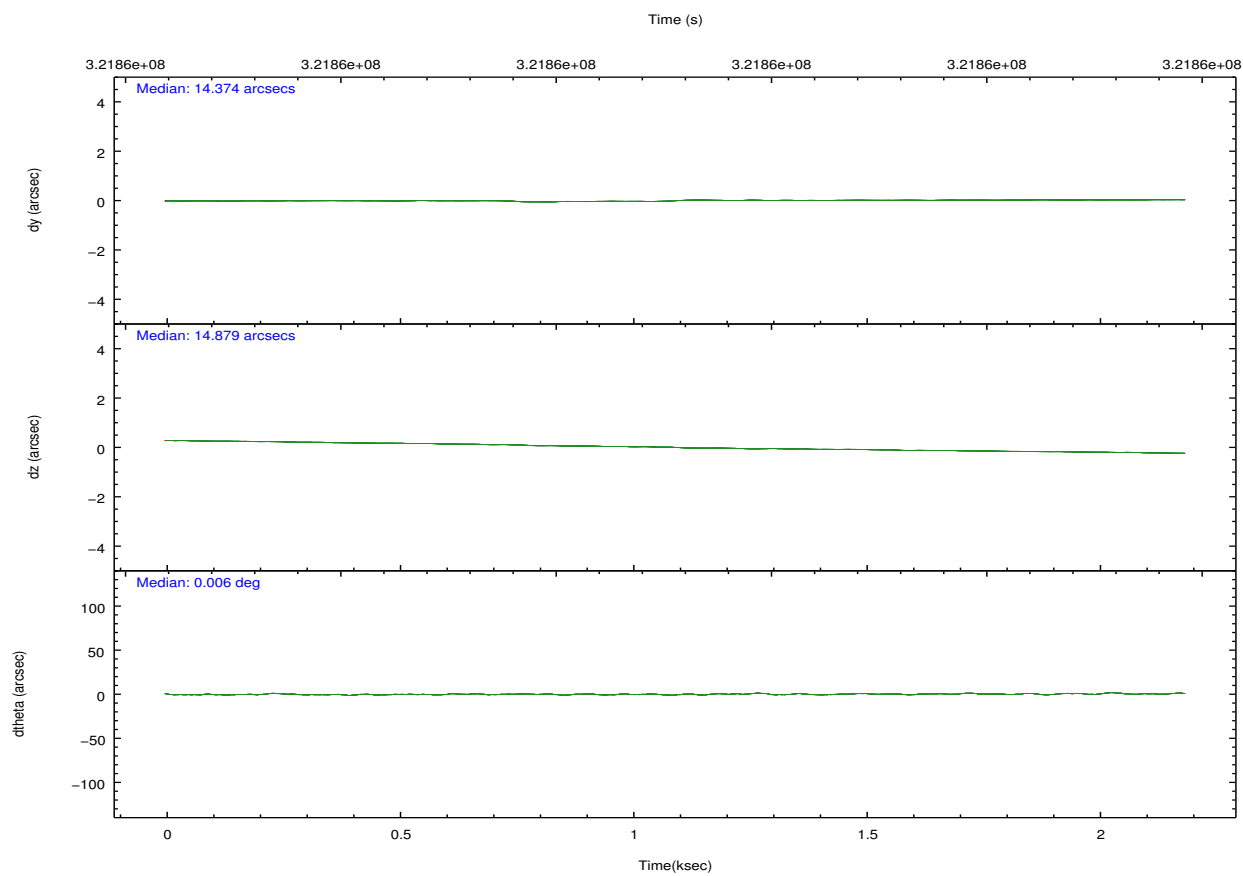
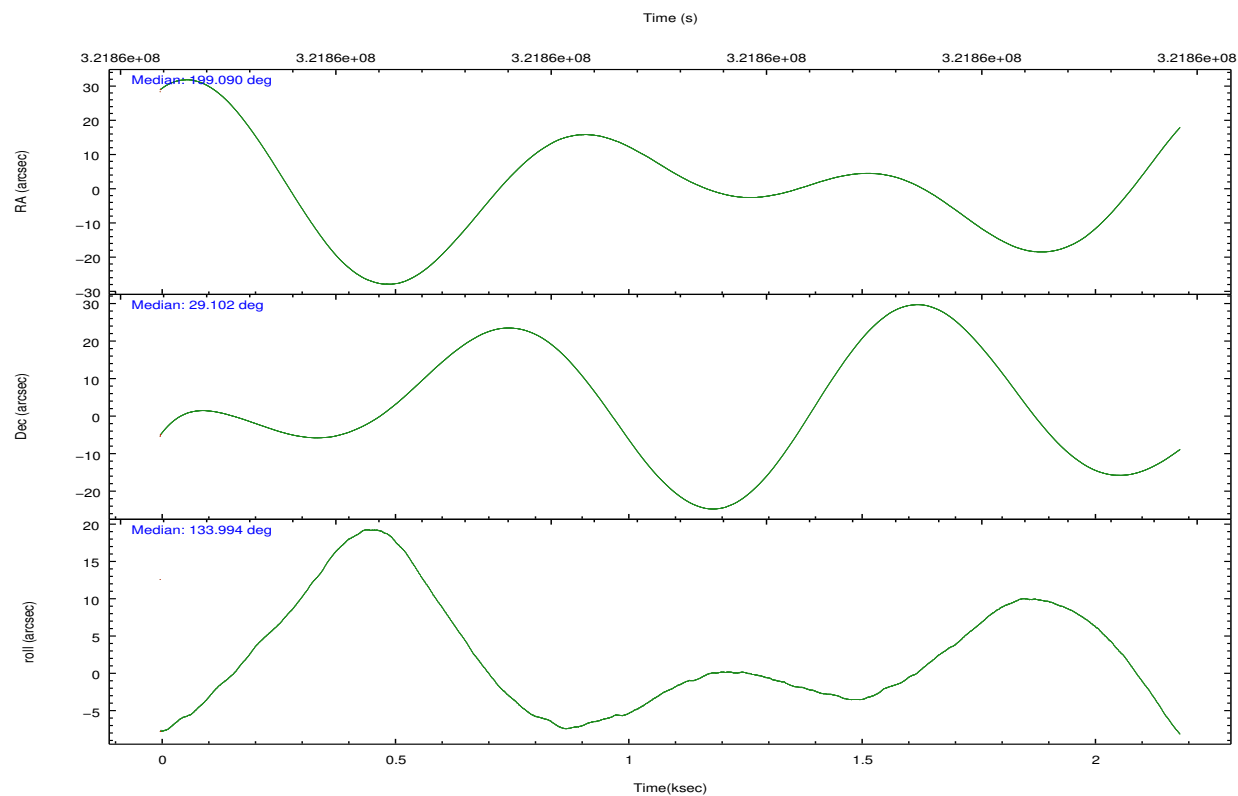
2.2 Compared Parameters

Parameter	Planned	Actual
Instrument	HRC	HRC
Detector	HRC-I	HRC-I
Grating	LETG	LETG
Data mode	OBSERVING	OBSERVING
Observation mode	POINTING	POINTING
[deg] Pointing RA	199.120358	199.0900712807085
[deg] Pointing Dec	29.096020	29.10269779858793
[deg] Pointing Roll	134.082398	134.0016388210564
[s] Window start time (MET)	318211265.184000	318211265.184000
[s] Window stop time (MET)	325900865.184000	325900865.184000
[mm] SIM focus pos	-1.040293	-1.038866356238299
[mm] SIM defocus	0	0.001426264420575141
[mm] SIM translation stage pos	126.985494	126.9829799899862
[mm] SIM translation stage offset	0	0.002508901615314585
[s] Observation start time (MET)	321862870.184000	321861642.93494
Observation start date	2008-03-14T06:20:05	2008-03-14T06:00:42
[s] Observation end time (MET)	321864870.184000	321865093.59761
Observation end date	2008-03-14T06:53:25	2008-03-14T06:58:13

Parameter	Planned	Actual
Obspar format version number	7	7
Obspar file type	PREDICTED	ACTUAL
Obspar update status	NONE	UPDATED

2.3 Aspect



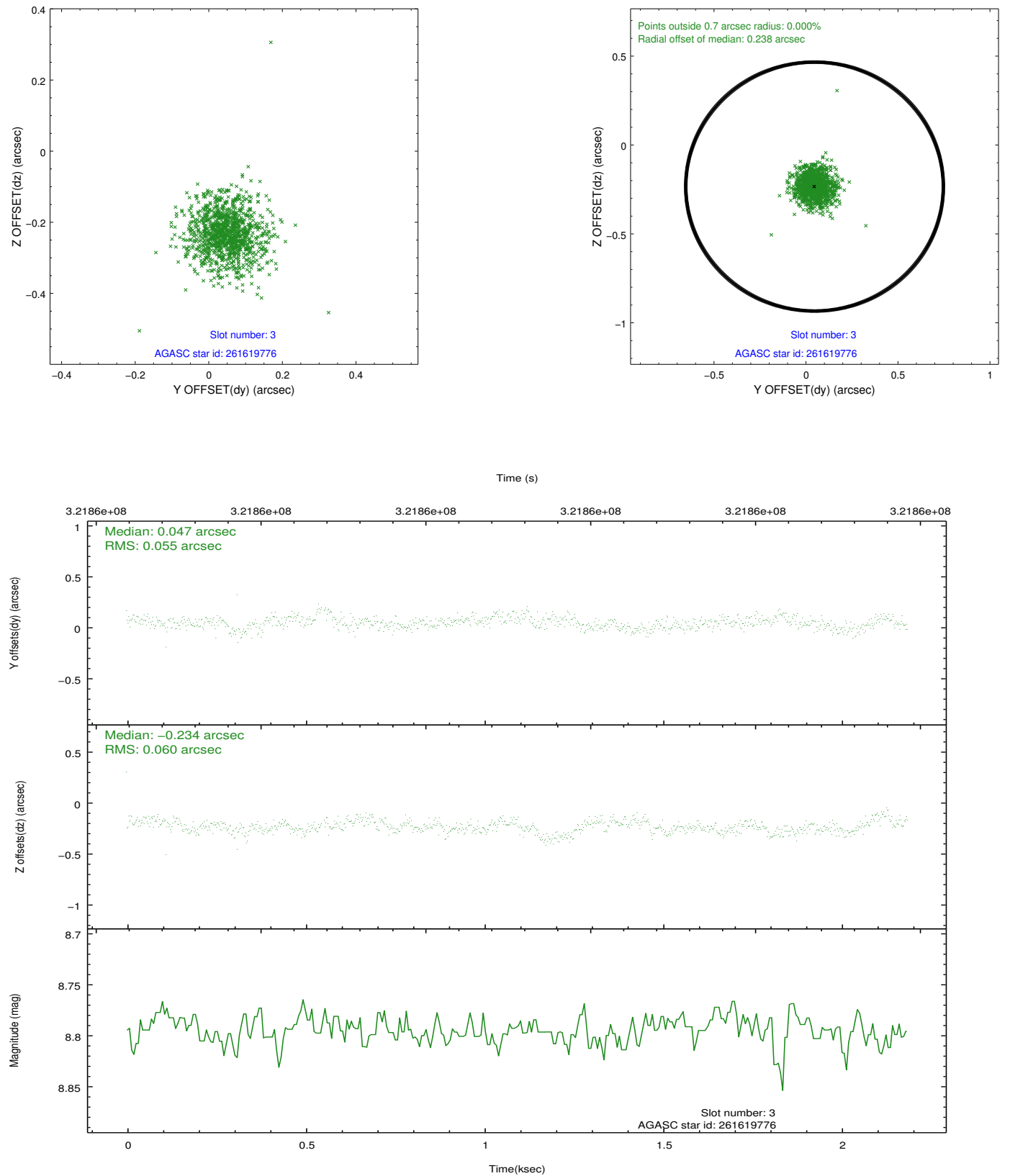


Slot Statistics

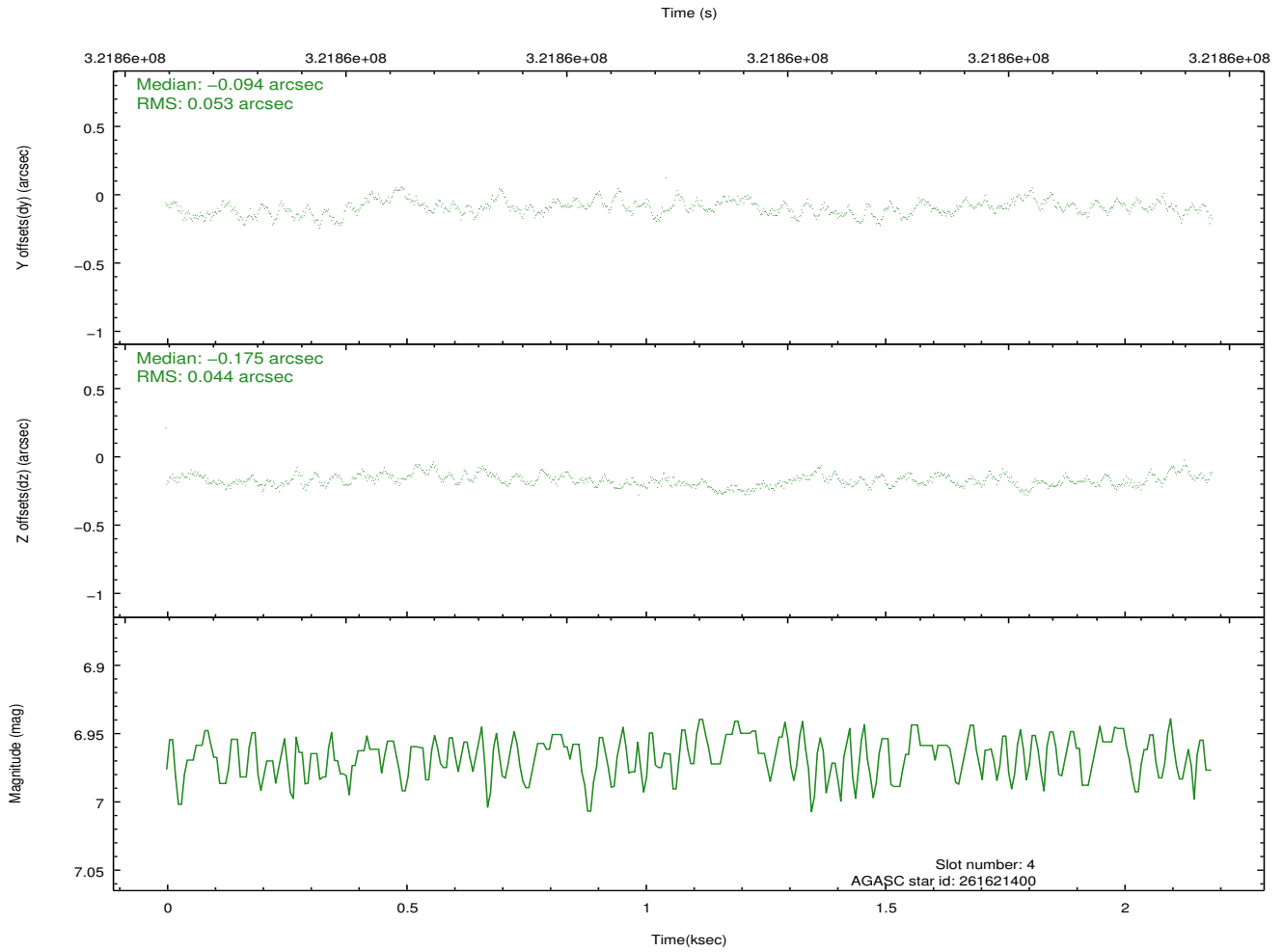
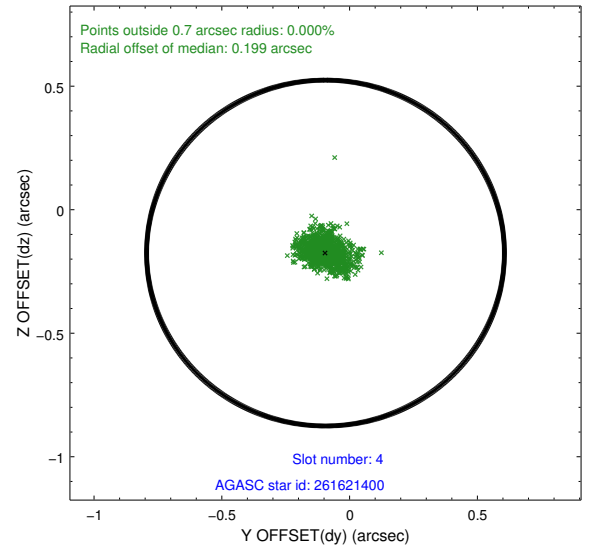
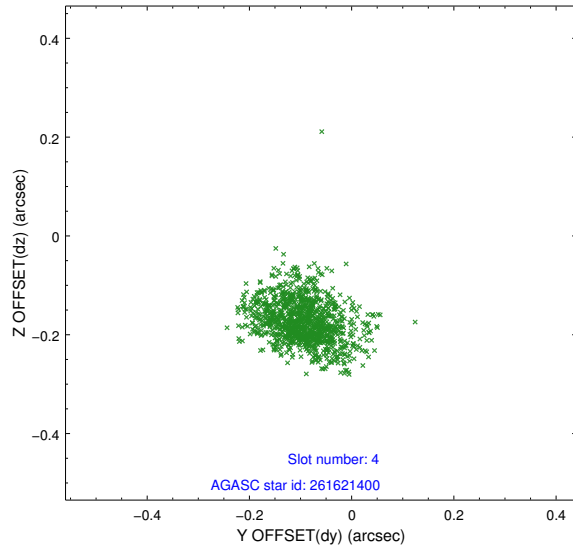
slot	status	id	mag	n_pts	med_dy	med_dz	dr1	dr2	ra	dec	mean_y	mean_z
0	FID	HRC-I-1	7.00	534	-0.094	0.014	0.008	0.014	0.000000	0.000000	-770.19	-1302.99
1	FID	HRC-I-2	7.04	534	0.219	-0.091	0.006	0.010	0.000000	0.000000	841.31	-1307.04
2	FID	HRC-I-3	7.10	534	-0.006	-0.012	0.006	0.012	0.000000	0.000000	-1197.11	999.09
3	GUIDE	261619776	8.80	1063	0.047	-0.234	0.086	0.138	198.654383	29.401174	1807.96	282.69
4	GUIDE	261621400	6.96	1067	-0.094	-0.175	0.072	0.122	198.901600	28.741982	-432.59	1381.66
5	GUIDE	261626376	9.69	1065	0.121	0.064	0.179	0.298	198.947288	29.347445	1028.80	-239.00
6	GUIDE	261629720	8.11	1067	0.085	0.194	0.071	0.115	199.236176	29.044452	-385.27	-133.70
7	GUIDE	261623040	9.14	1065	-0.154	0.136	0.109	0.175	198.792686	29.757643	2424.52	-922.93

2.4 Star Slots

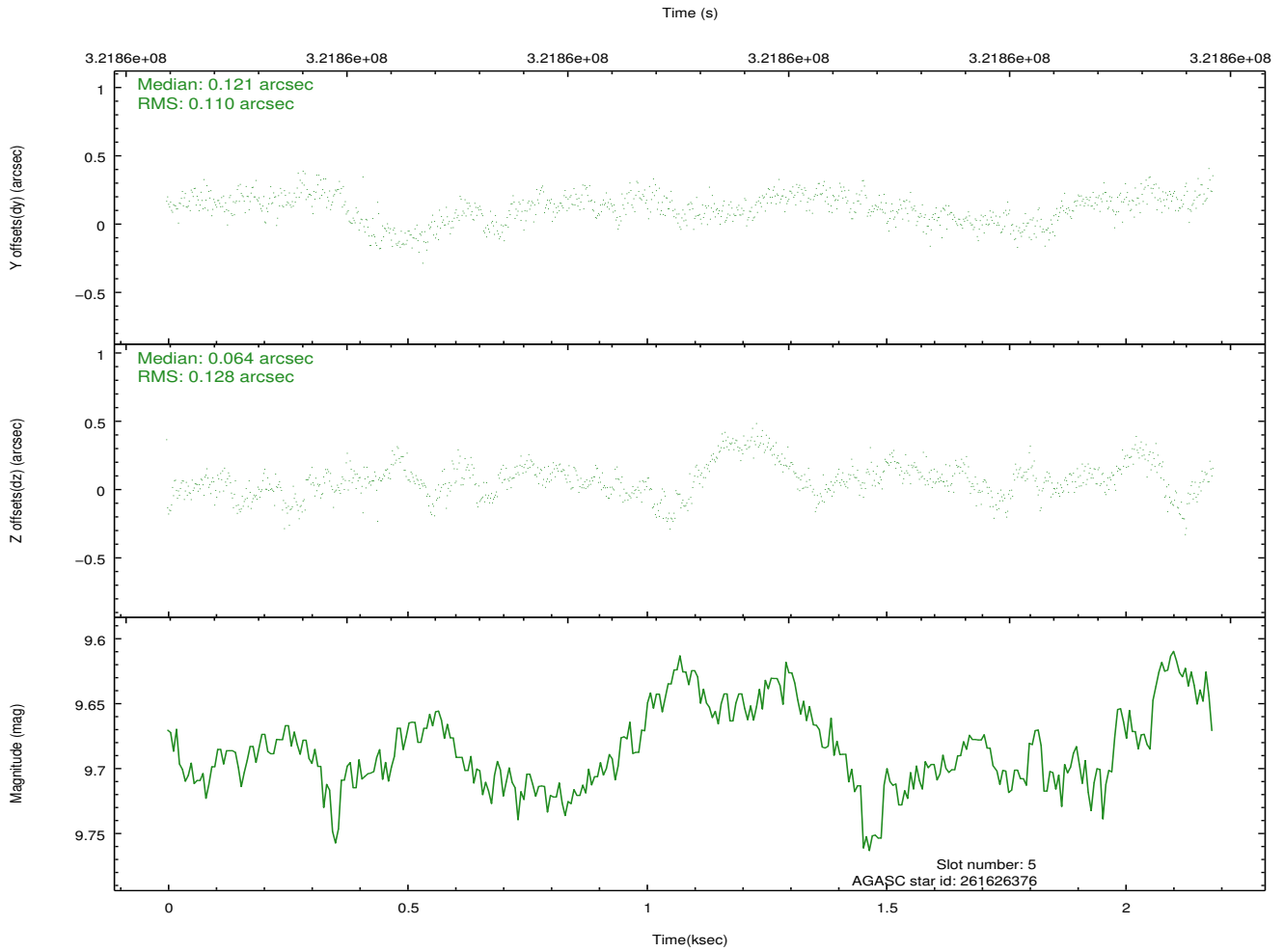
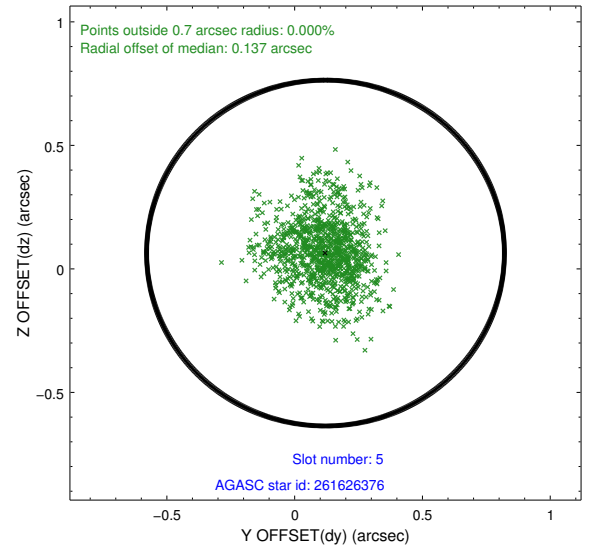
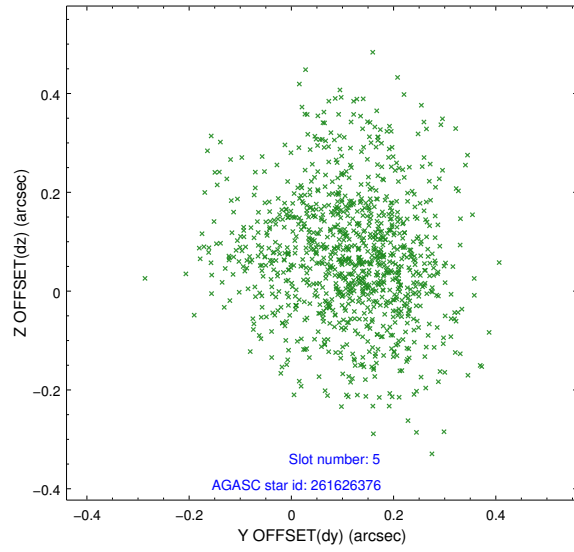
2.4.1 Slot 3



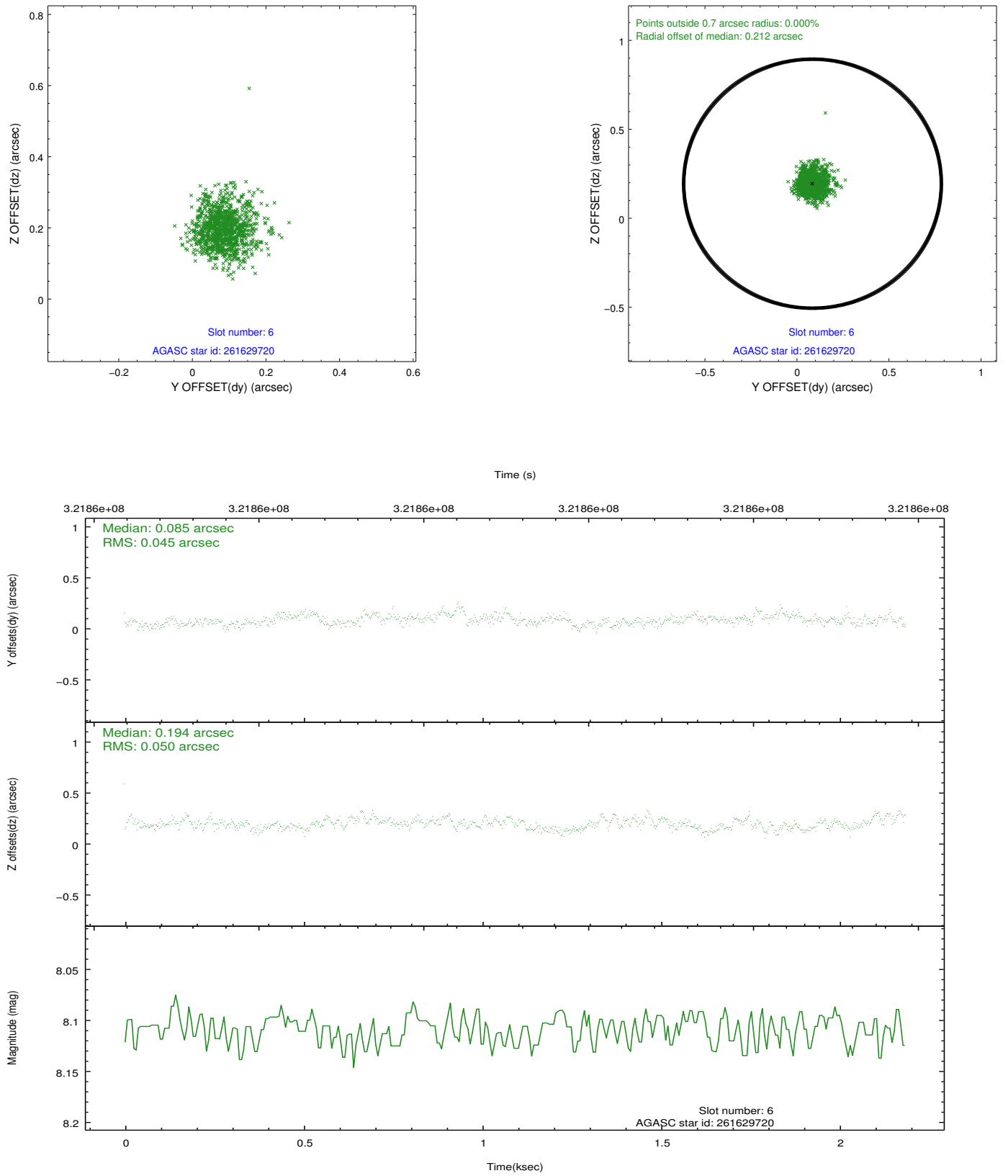
2.4.2 Slot 4



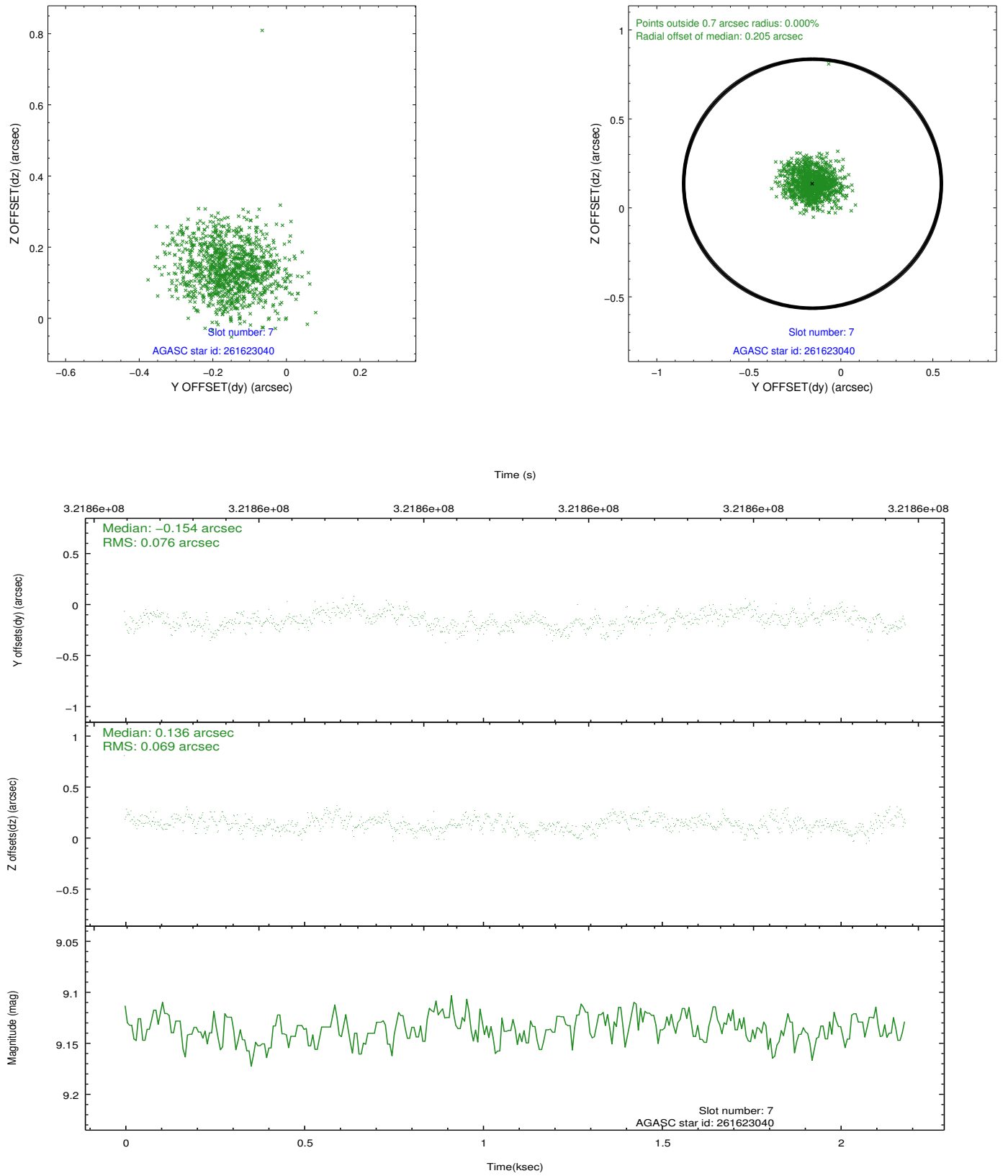
2.4.3 Slot 5



2.4.4 Slot 6

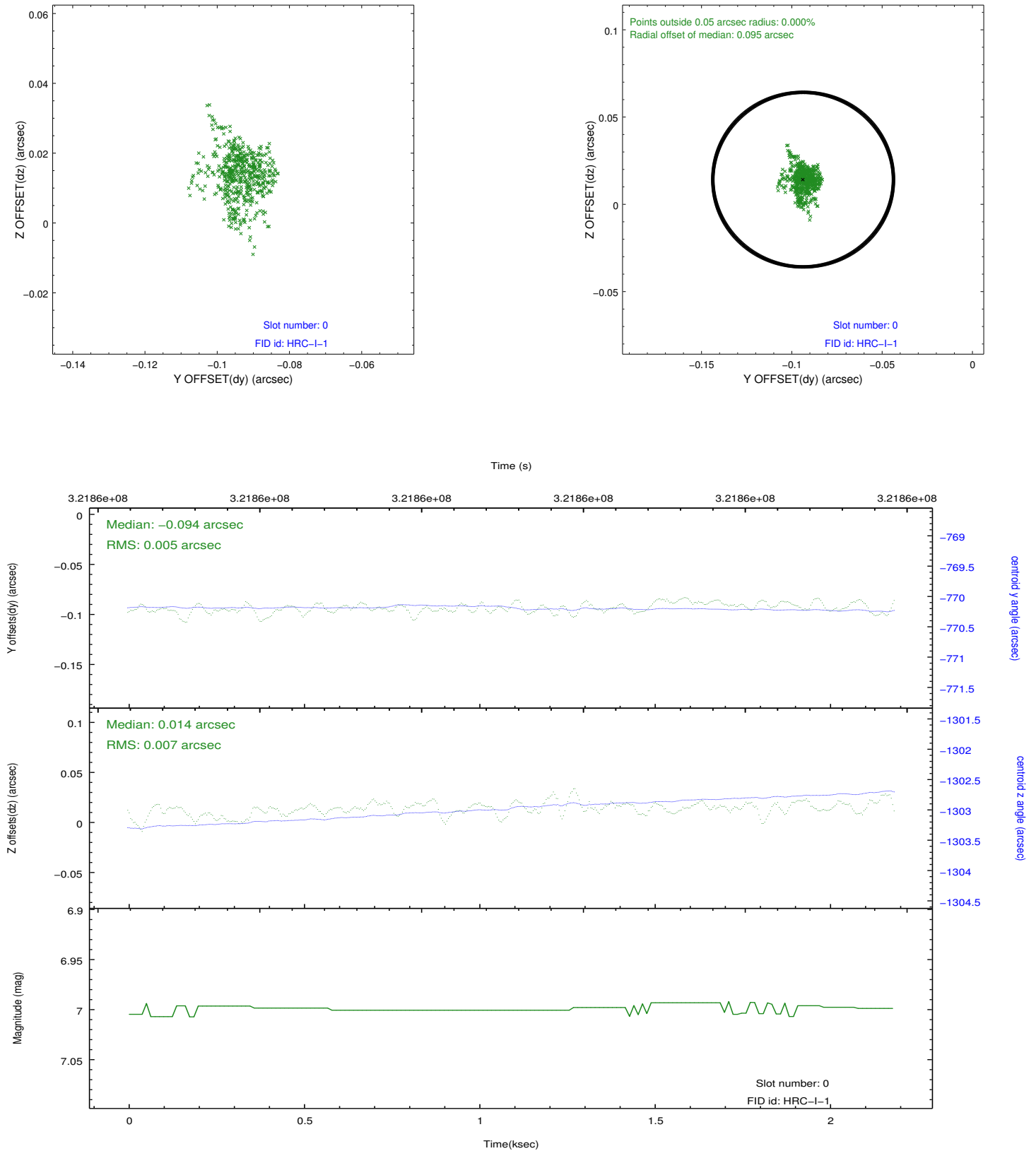


2.4.5 Slot 7

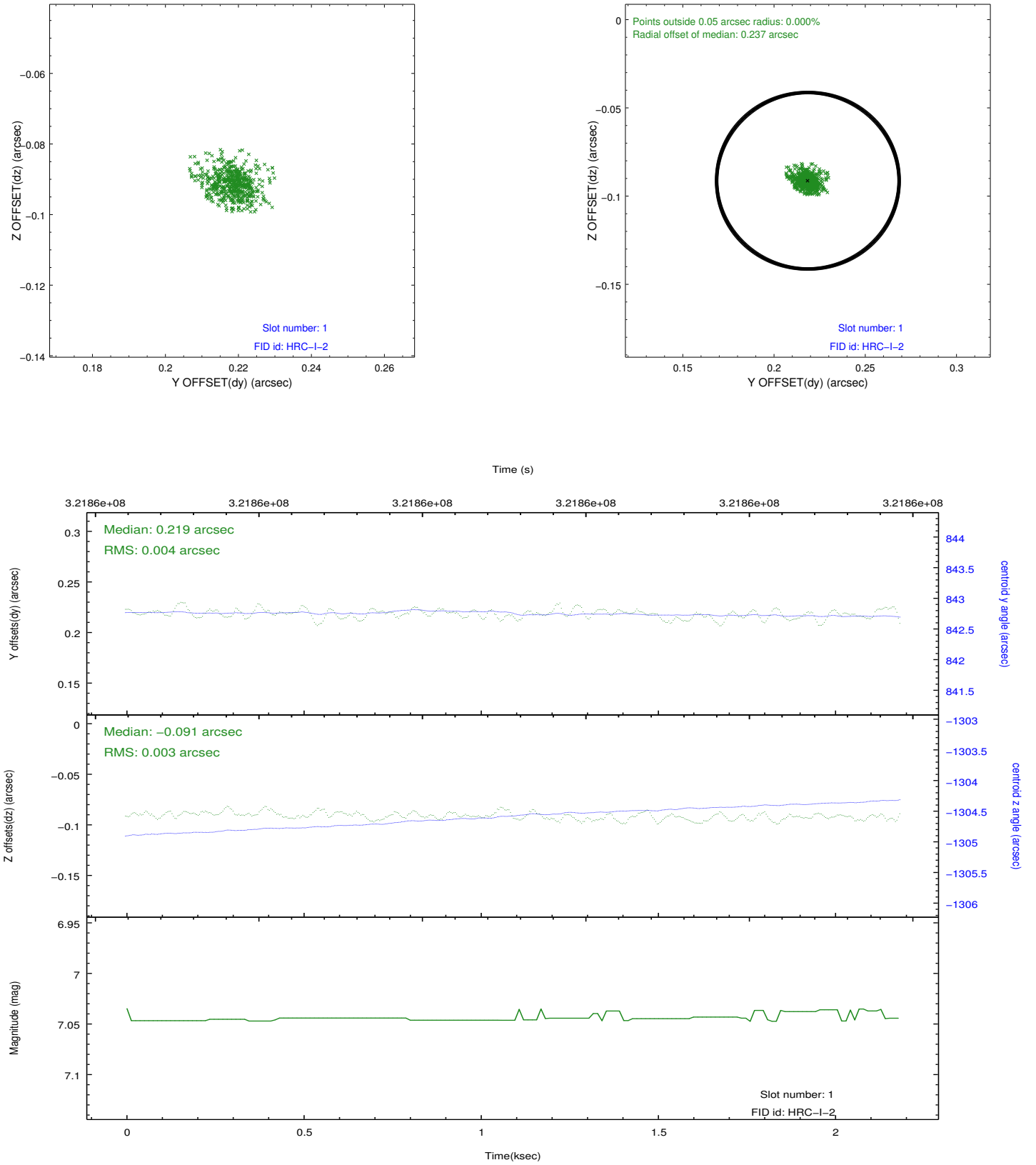


2.5 FID Slots

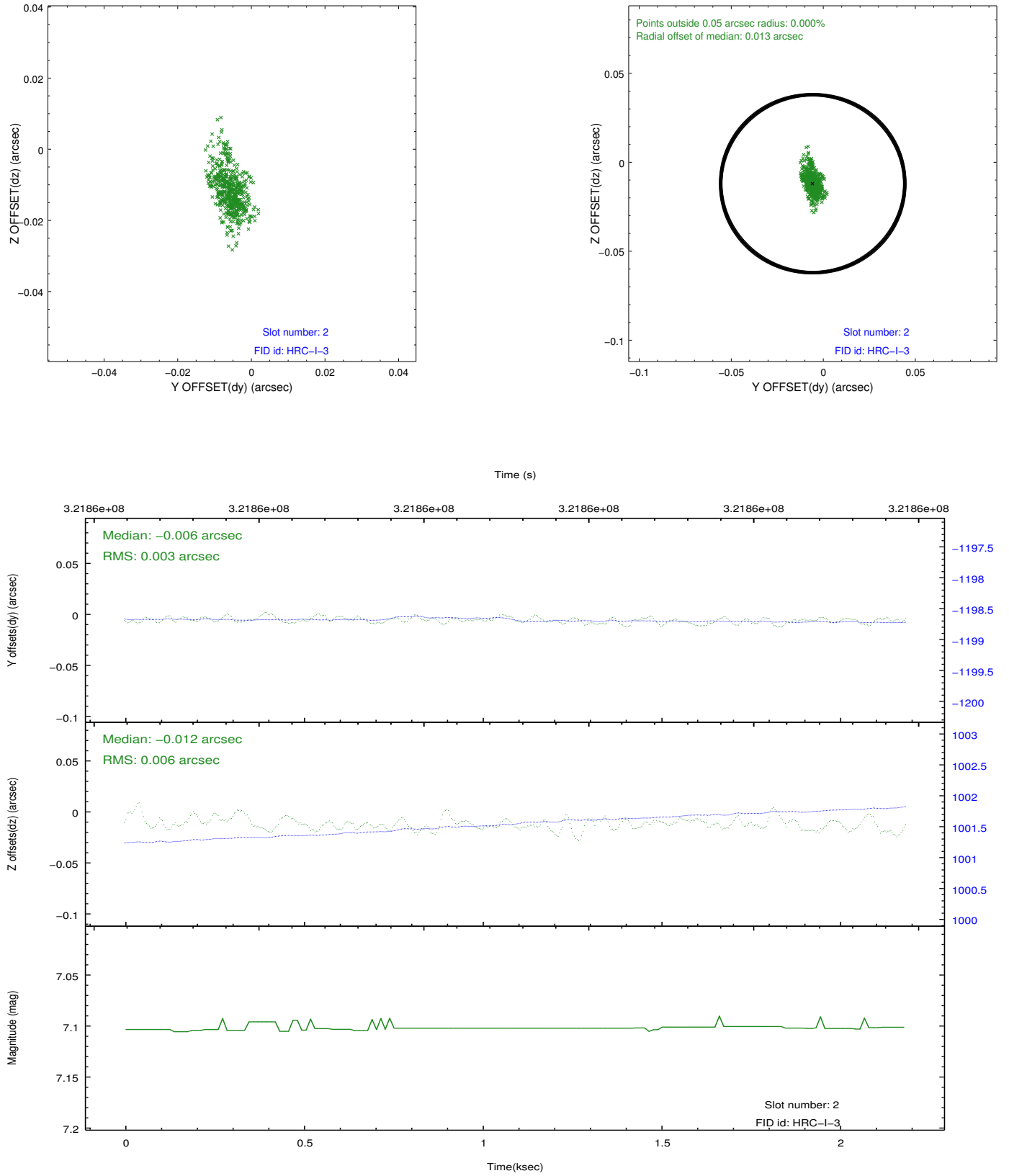
2.5.1 Slot 0



2.5.2 Slot 1

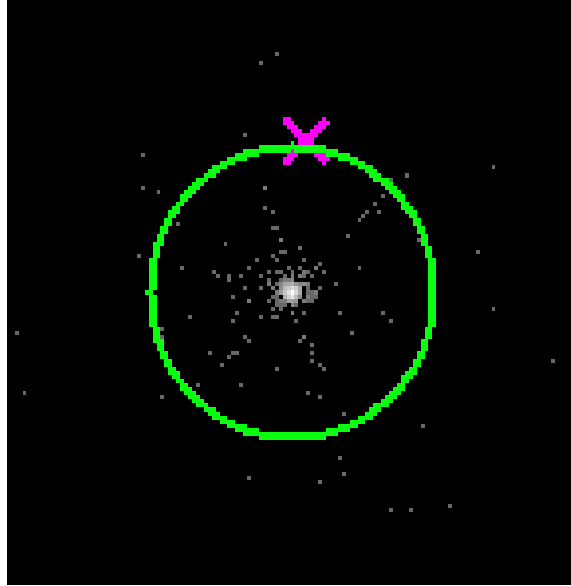


2.5.3 Slot 2

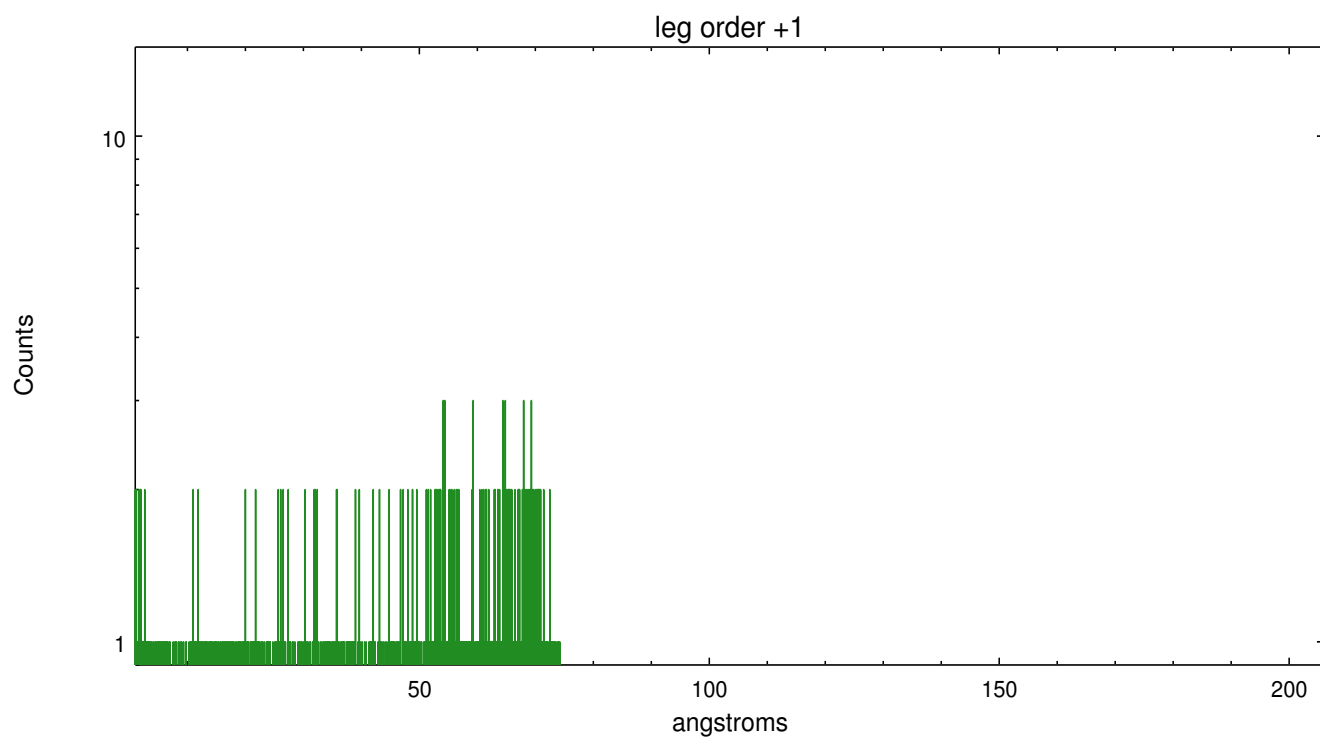
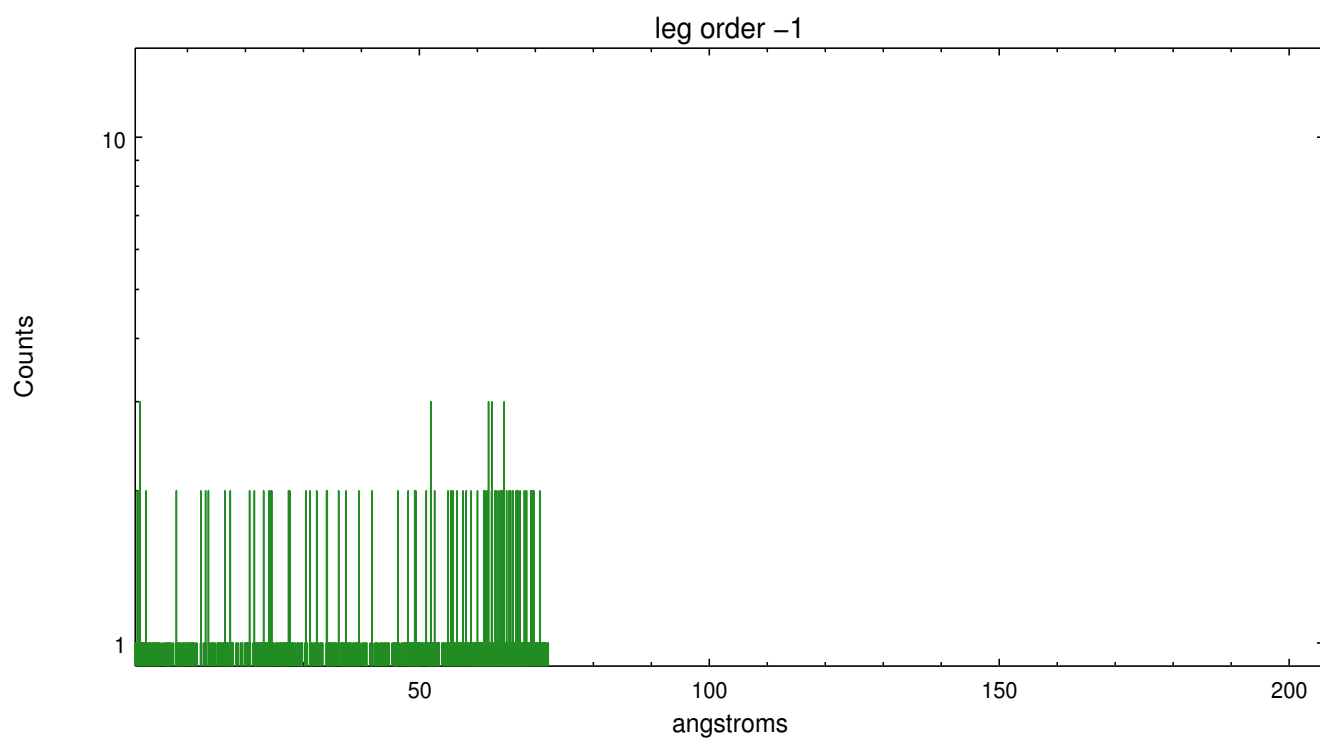


3 Gratings

3.1 LETG Arm



LETG Zero Order



A Summary

A.1 Status

V&V Scientist	Joy Nichols
V&V Date (YYYY-MM-DD)	2012.08.22
V&V Edition	1
V&V Disposition and Status	OK
V&V Charge Time	2.18453135

A.2 Comments

SIMBAD 2000 coordinates are $ra = 13\ 16\ 21.8533$, $dec = +29\ 05\ 55.440$. Proper motion in SIMBAD is $-157.97\ -103.59$ mas/yr. The observer requested coordinates $ra = 13:16:22.10$, $dec = +29:05:56.40$. However, the target is located at $ra = 13\ 16\ 21.73$, $dec = +29\ 05\ 54.5$. It appears the proper motion correction might have been applied with the wrong sign. The software tool `tgdetect` found the source accurately and extracted the spectrum correctly.