

V&V Reference Report

L2 ASCDS Version : 8.4.4

Observation 8349 - L2 Version 5
Chandra X-Ray Center

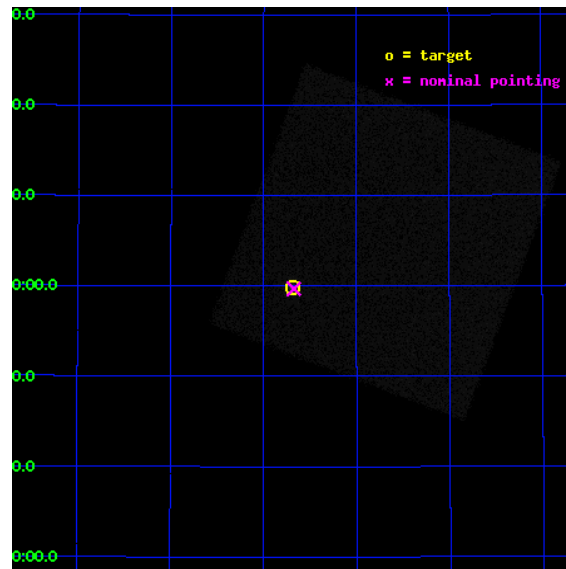
L2 Processing Date : Aug 11 2012

Contents

1	Front	2
2	OBI	3
2.1	OBI	3
2.1.1	Images	3
2.1.2	Parameters	4
2.1.3	Events	4
2.2	Compared Parameters	5
2.3	Aspect	6
2.4	Star Slots	9
2.4.1	Slot 3	9
2.4.2	Slot 4	10
2.4.3	Slot 5	11
2.4.4	Slot 6	12
2.4.5	Slot 7	13
2.5	FID Slots	14
2.5.1	Slot 0	14
2.5.2	Slot 1	15
2.5.3	Slot 2	16
A	Summary	17
A.1	Status	17
A.2	Comments	17

1 Front

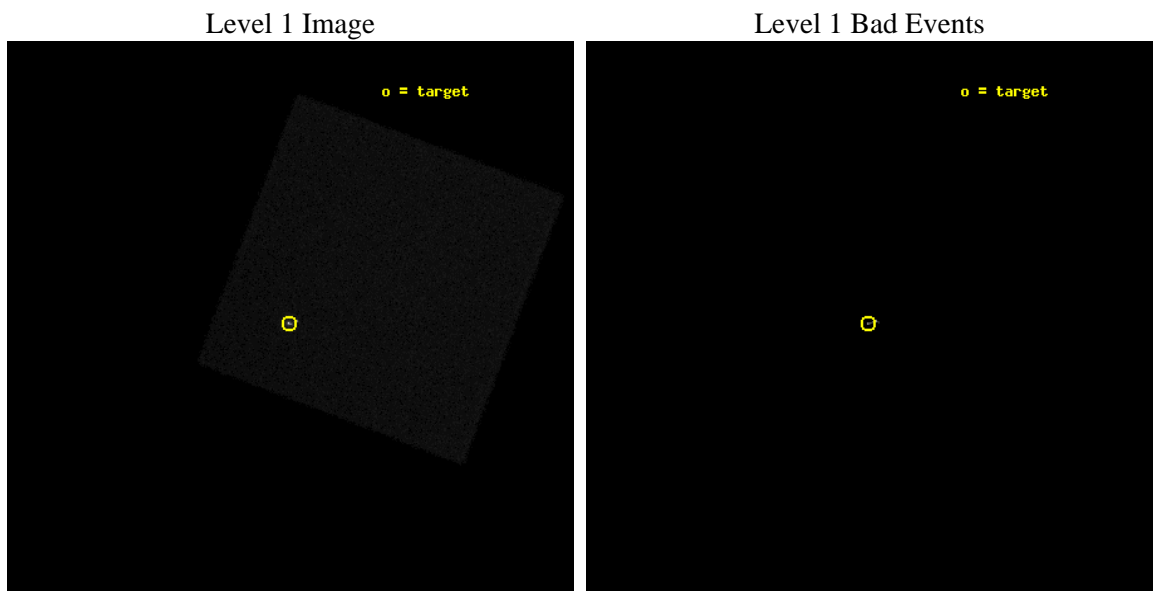
seq_num	290728	Sequence number
obs_id	8349	Observation id
title	Improving the De-Gap Corrections for the HRC-I	Proposal title
observer	Dr. CXC Calibration	Principal investigator
object	Capella	Source name
ra_targ	79.1725	Observer's specified target RA [deg]
dec_targ	45.998	Observer's specified target Dec [deg]
ra_nom	79.168403471573	Nominal RA [deg]
dec_nom	45.994972065445	Nominal Dec [deg]
roll_nom	245.6538460659	Nominal Roll [deg]
revision	5	Processing version of data
ontime	5185.4752458334	[s]
livetime	5131.4641911258	Ontime multiplied by DTCOR
l2events	366646	Number of level 2 events



2 OBI

2.1 OBI

2.1.1 Images



2.1.2 Parameters

obi_num	0	Obi number	sched_exp_time	5000.000000	[s] Scheduled observation exposure time
ascdsver	8.4.5	Processing system revision	ontime	5185.4752458334	[s]
caldbver	4.5.1.1	 	l1events	526491	Number of level 1 events
date	2012-08-11T16:51:22	Date and time of file creation			
revision	5	Processing version of data			

2.1.3 Events

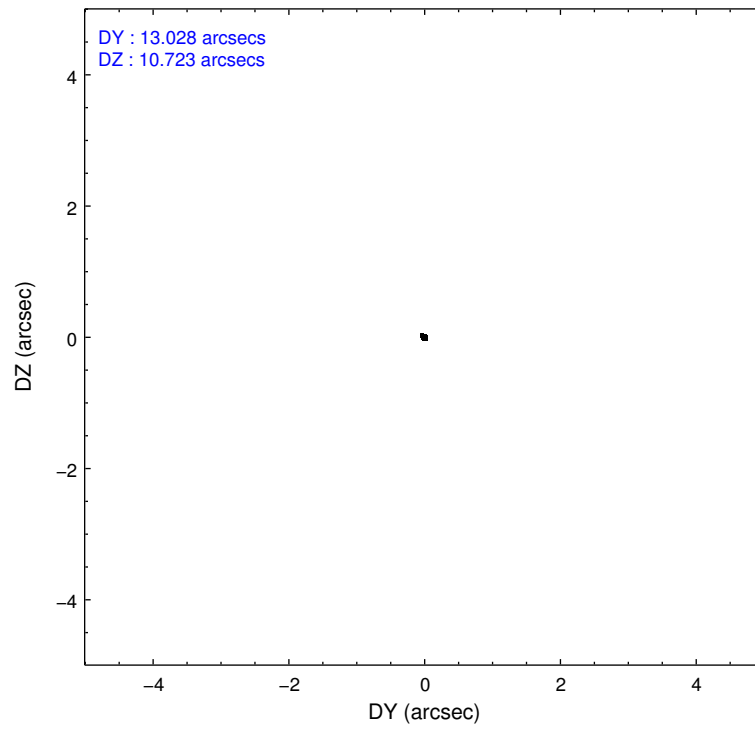
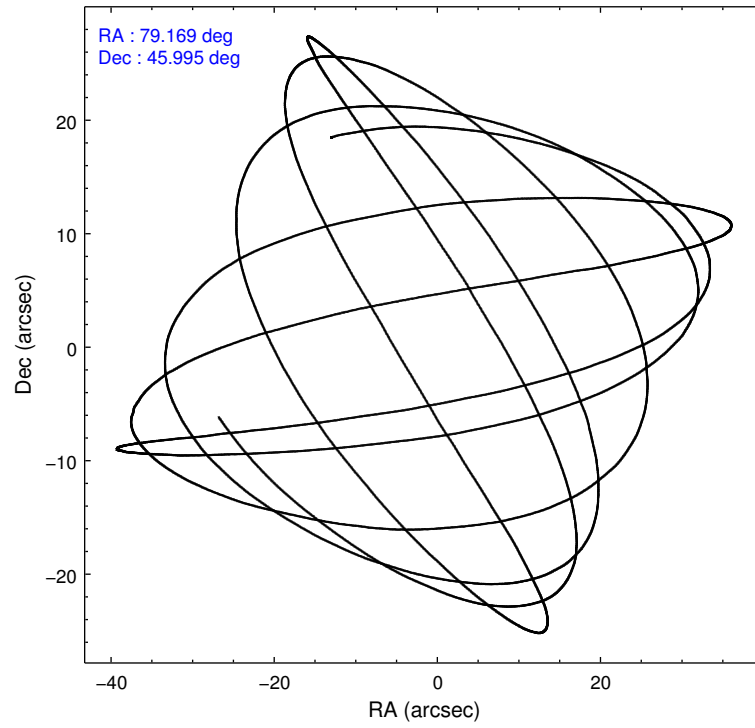
Level 1 Events

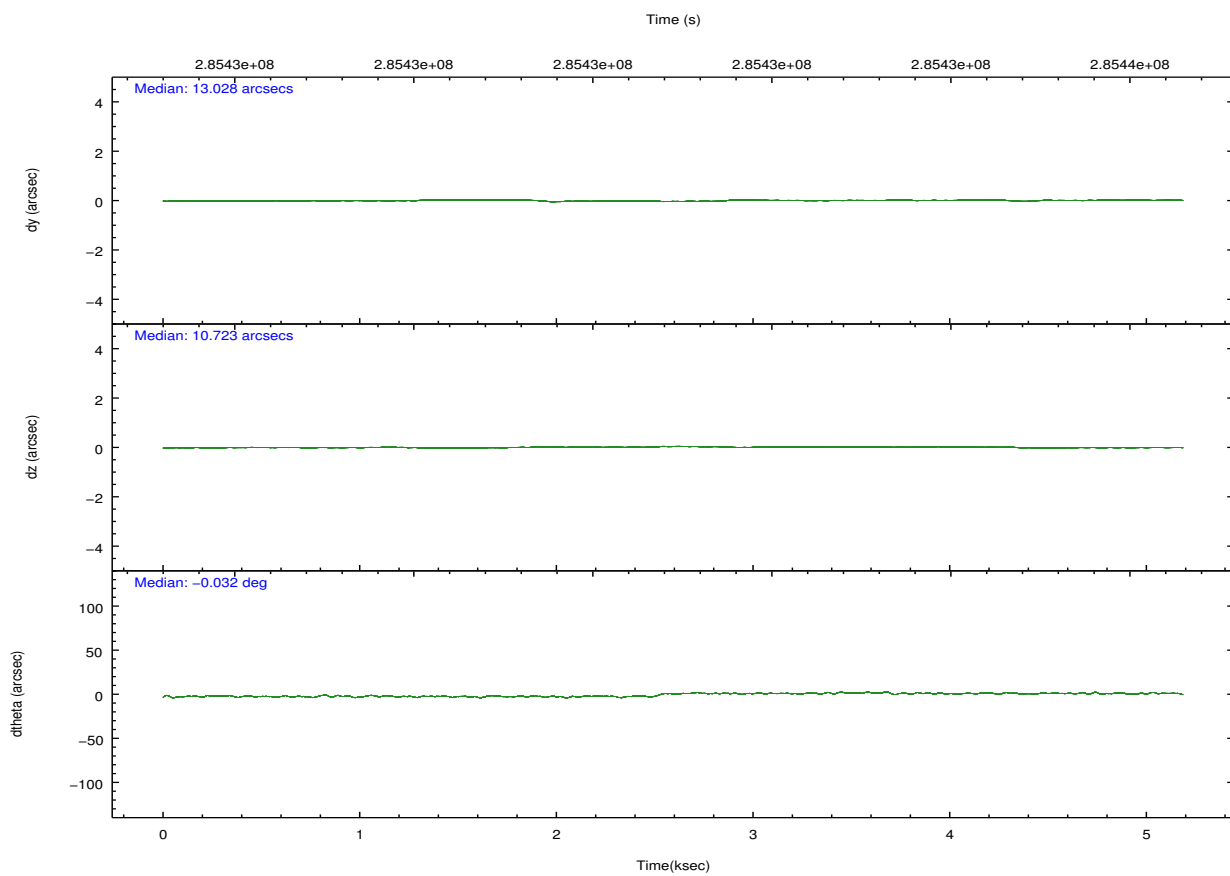
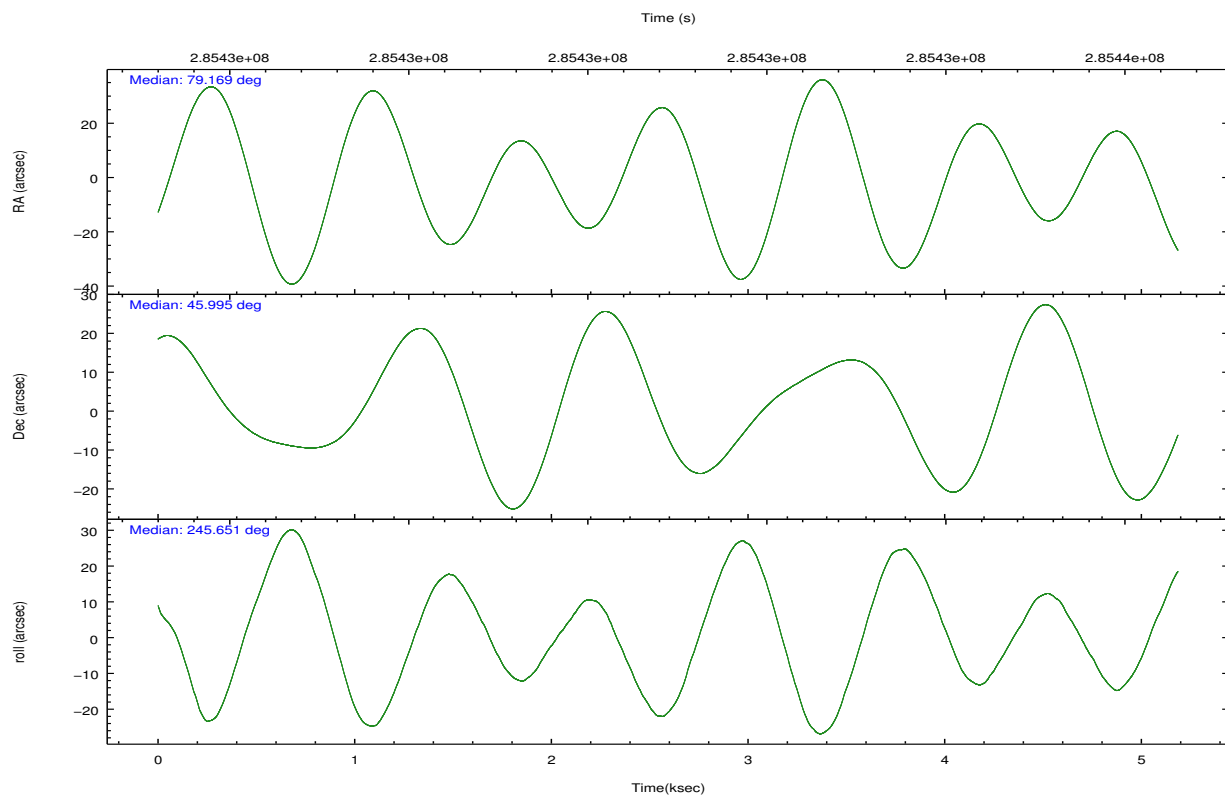
	segment 0
level 1 events	526491
rejected events	30496
rejected %	5%

2.2 Compared Parameters

Parameter	Planned	Actual	Parameter	Planned	Actual
Instrument	HRC	HRC	Obspar format version number	7	7
Detector	HRC-I	HRC-I	Obspar file type	PREDICTED	ACTUAL
Grating	NONE	NONE	Obspar update status	NONE	UPDATED
Data mode	OBSERVING	OBSERVING			
Observation mode	POINTING	POINTING			
[deg] Pointing RA	79.163365	79.16840347157328			
[deg] Pointing Dec	46.022071	45.9949720654453			
[deg] Pointing Roll	245.752956	245.6538460658957			
[mm] SIM focus pos	-1.040293	-1.038866356238299			
[mm] SIM defocus	0	0.001426264420575141			
[mm] SIM translation stage pos	159.985494	159.9934255841675			
[mm] SIM translation stage offset	-33	-33.00793669256592			
[s] Observation start time (MET)	285430042.184000	285429665.92298			
Observation start date	2007-01-17T14:06:17	2007-01-17T14:01:05			
[s] Observation end time (MET)	285435042.184000	285435175.81074			
Observation end date	2007-01-17T15:29:37	2007-01-17T15:32:55			

2.3 Aspect



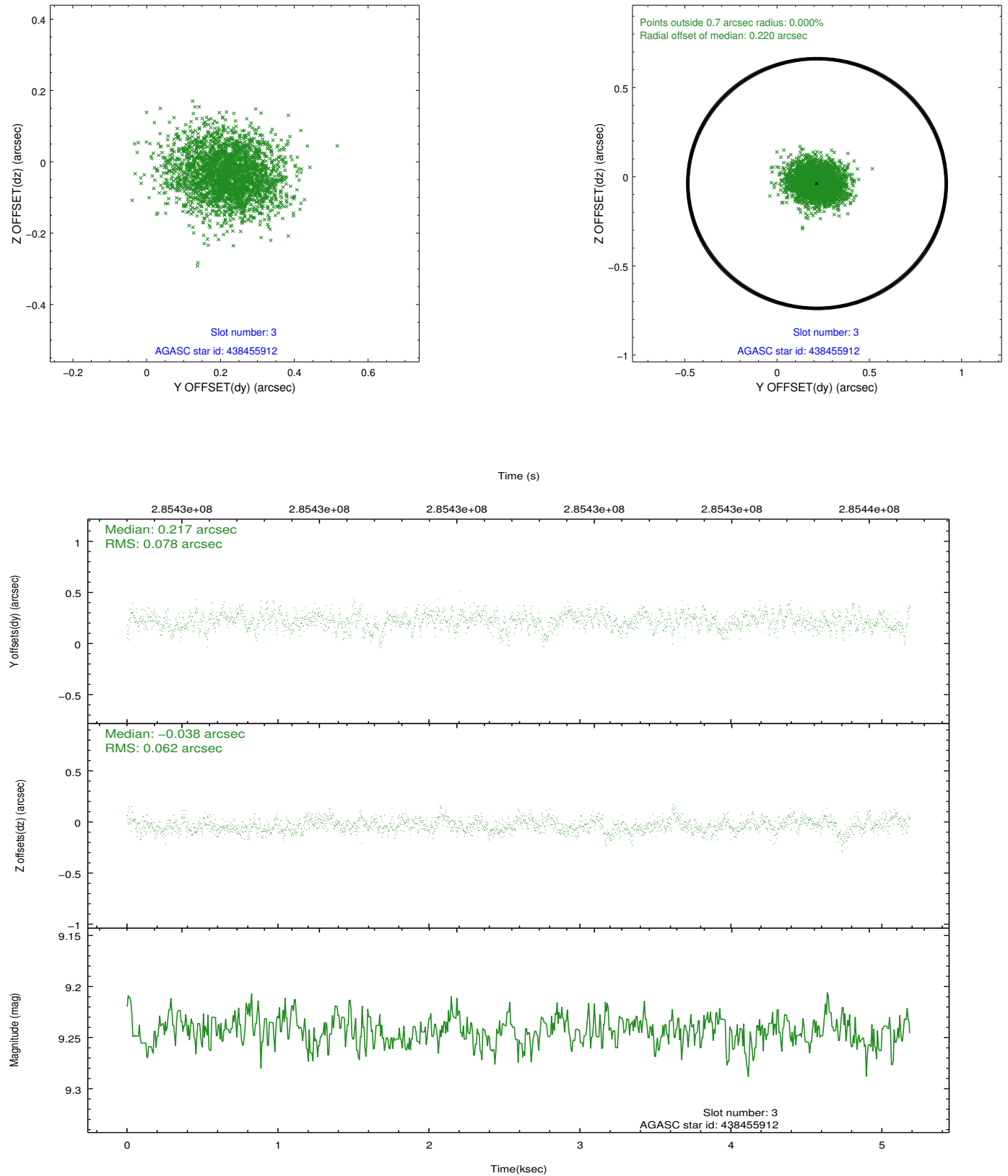


Slot Statistics

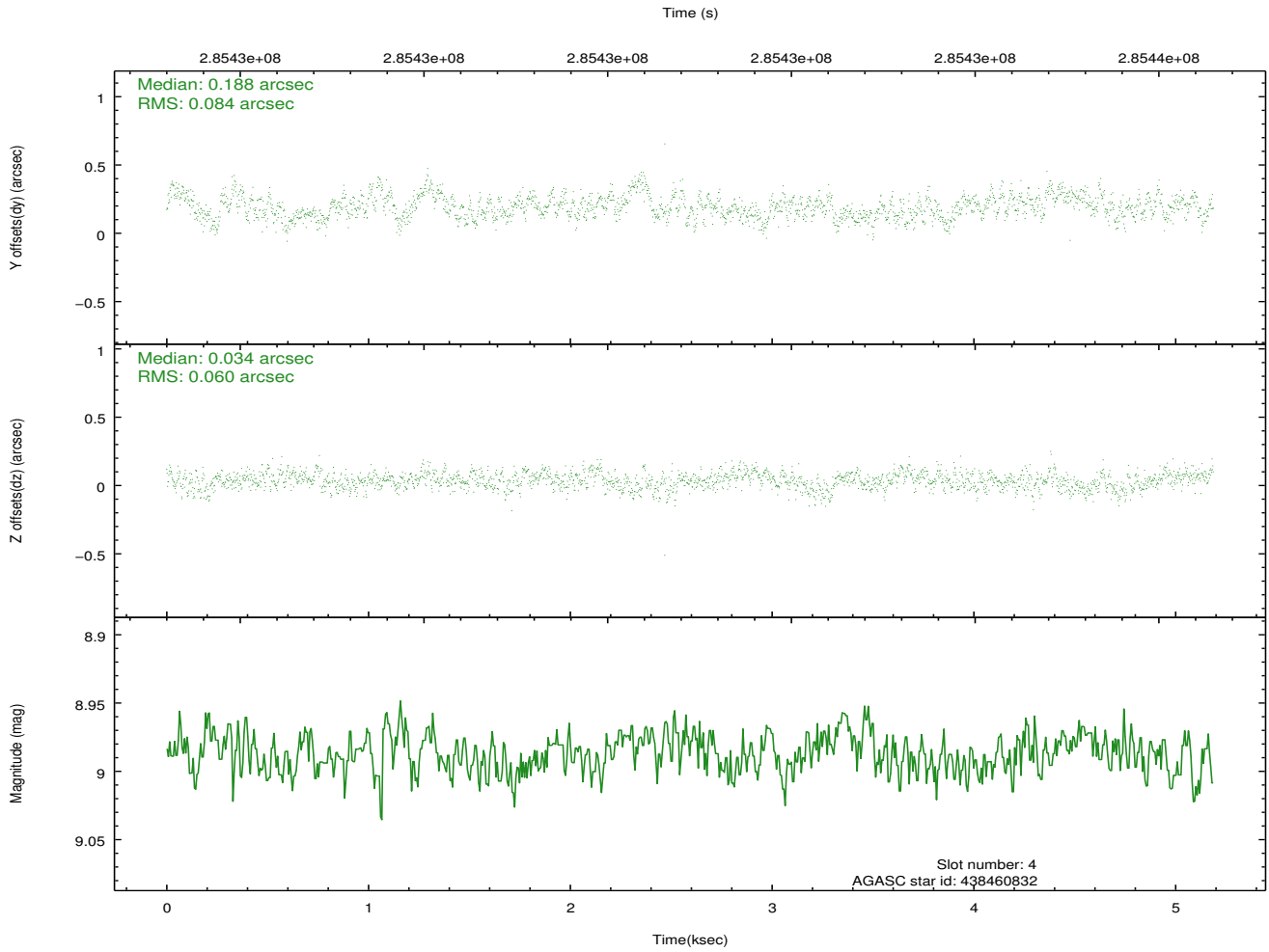
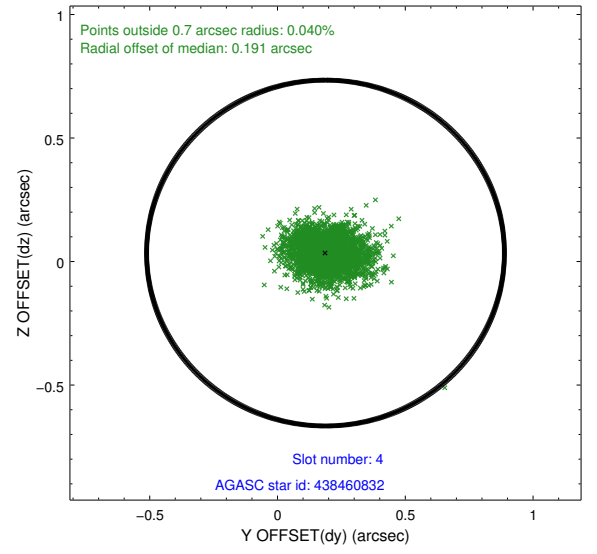
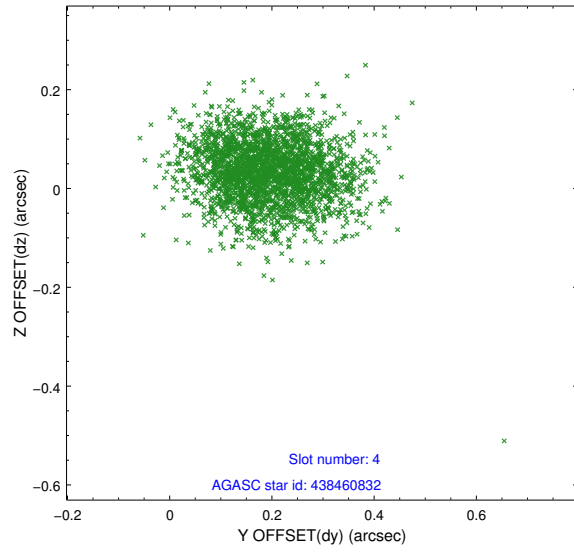
slot	status	id	mag	n_pts	med_dy	med_dz	dr1	dr2	ra	dec	mean_y	mean_z
0	FID	HRC-I-2	7.04	1265	-0.378	-1.516	0.031	0.040	0.000000	0.000000	845.56	-1979.86
1	FID	HRC-I-3	7.14	1266	0.884	-0.162	0.016	0.023	0.000000	0.000000	-1195.27	324.57
2	FID	HRC-I-4	6.96	1265	-0.388	1.586	0.035	0.045	0.000000	0.000000	1273.12	327.52
3	GUIDE	438455912	9.24	2531	0.217	-0.038	0.106	0.173	78.251946	45.690923	2017.03	-1606.09
4	GUIDE	438460832	8.99	2531	0.188	0.034	0.107	0.176	78.414614	45.554782	2302.57	-1034.70
5	GUIDE	440140240	9.98	2528	-0.174	0.058	0.147	0.244	78.889349	46.726437	-2034.18	-1659.44
6	GUIDE	440150048	7.14	2531	-0.204	-0.009	0.071	0.109	79.112838	46.416060	-1242.30	-698.12
7	GUIDE	440163960	8.88	2530	-0.031	-0.049	0.082	0.131	79.298370	45.827072	500.51	596.17

2.4 Star Slots

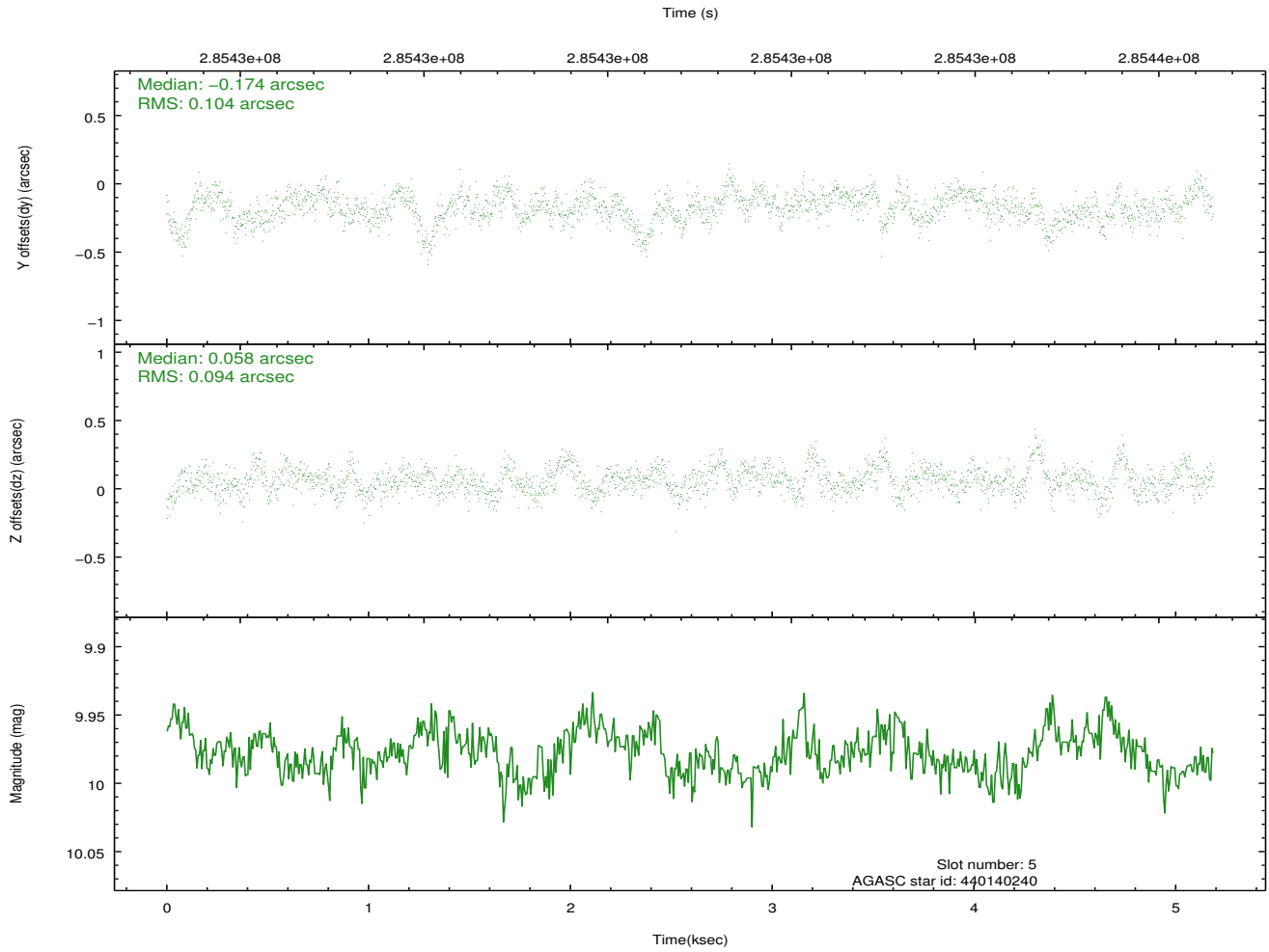
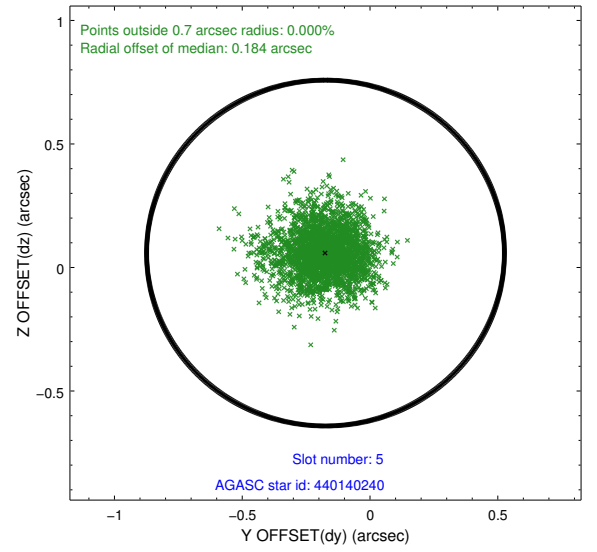
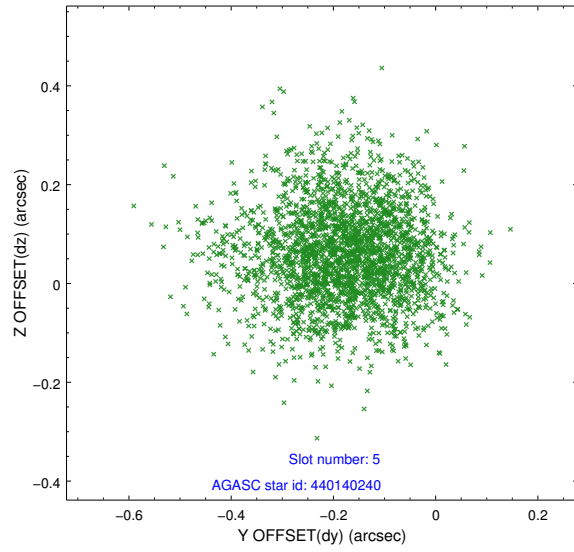
2.4.1 Slot 3



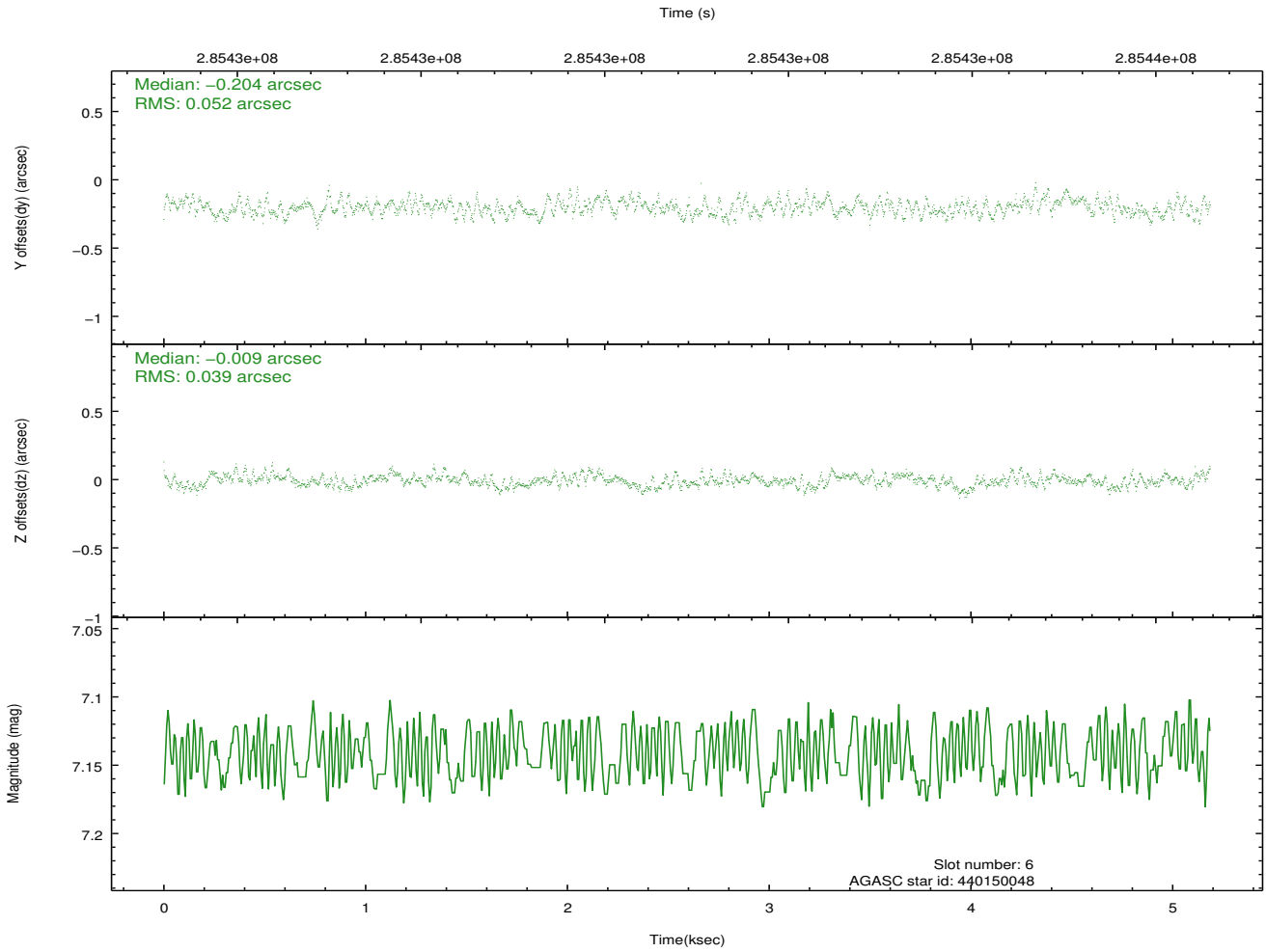
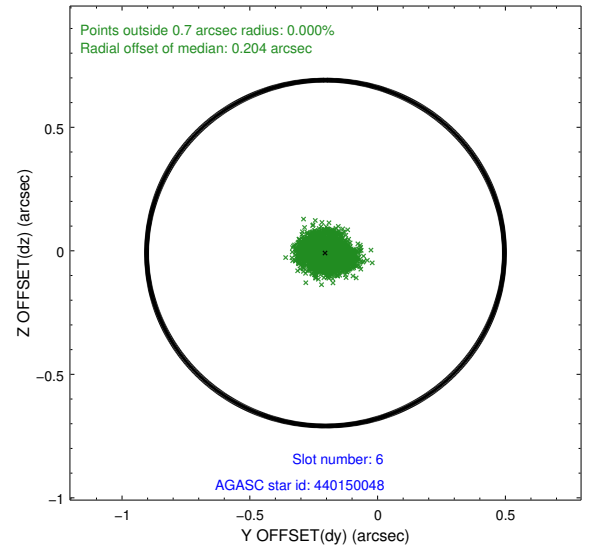
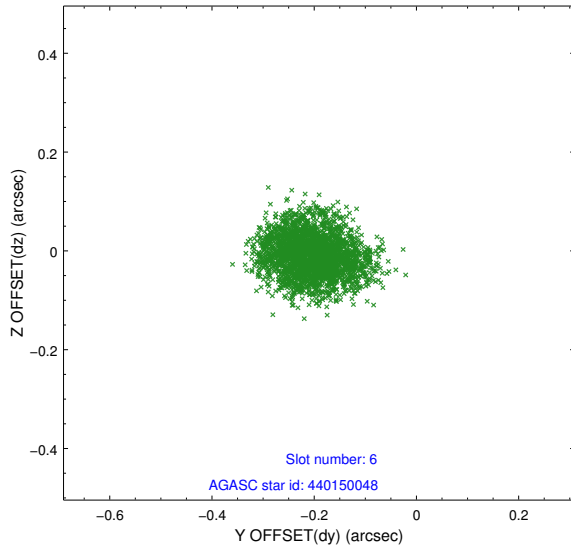
2.4.2 Slot 4



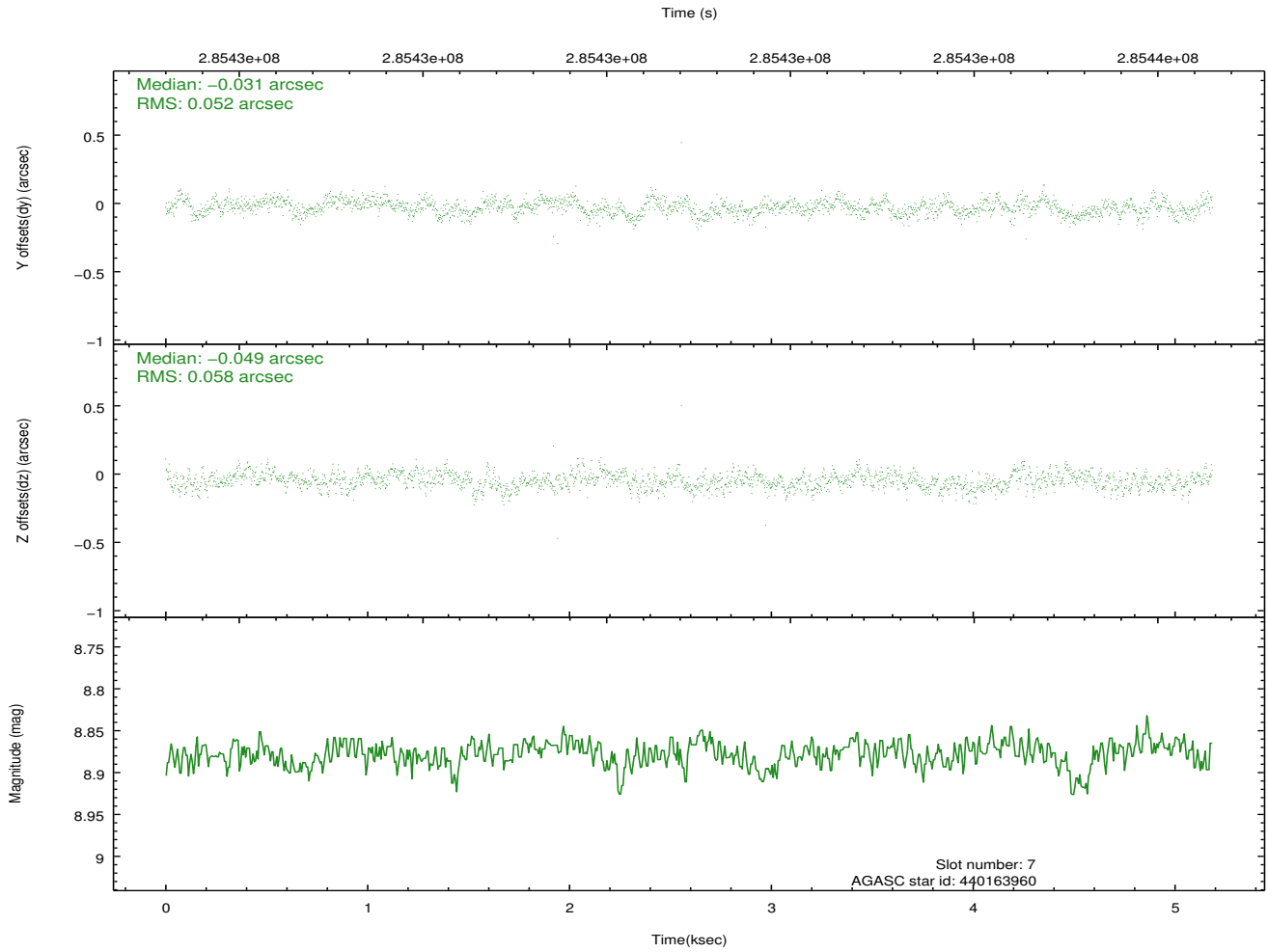
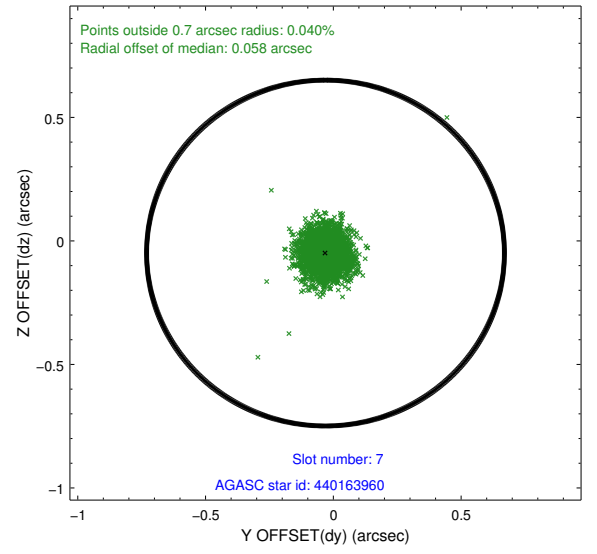
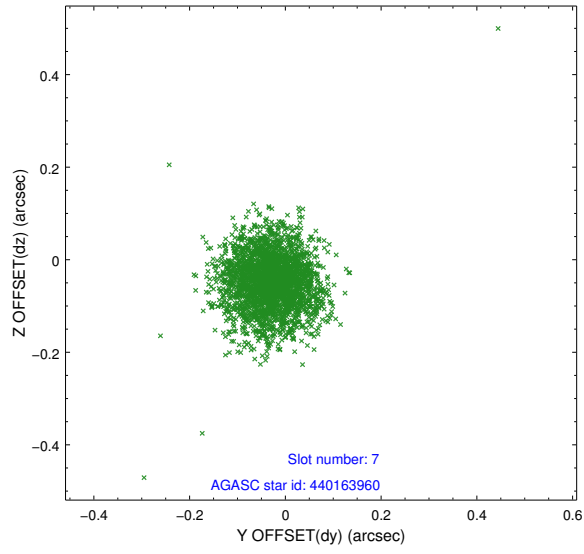
2.4.3 Slot 5



2.4.4 Slot 6

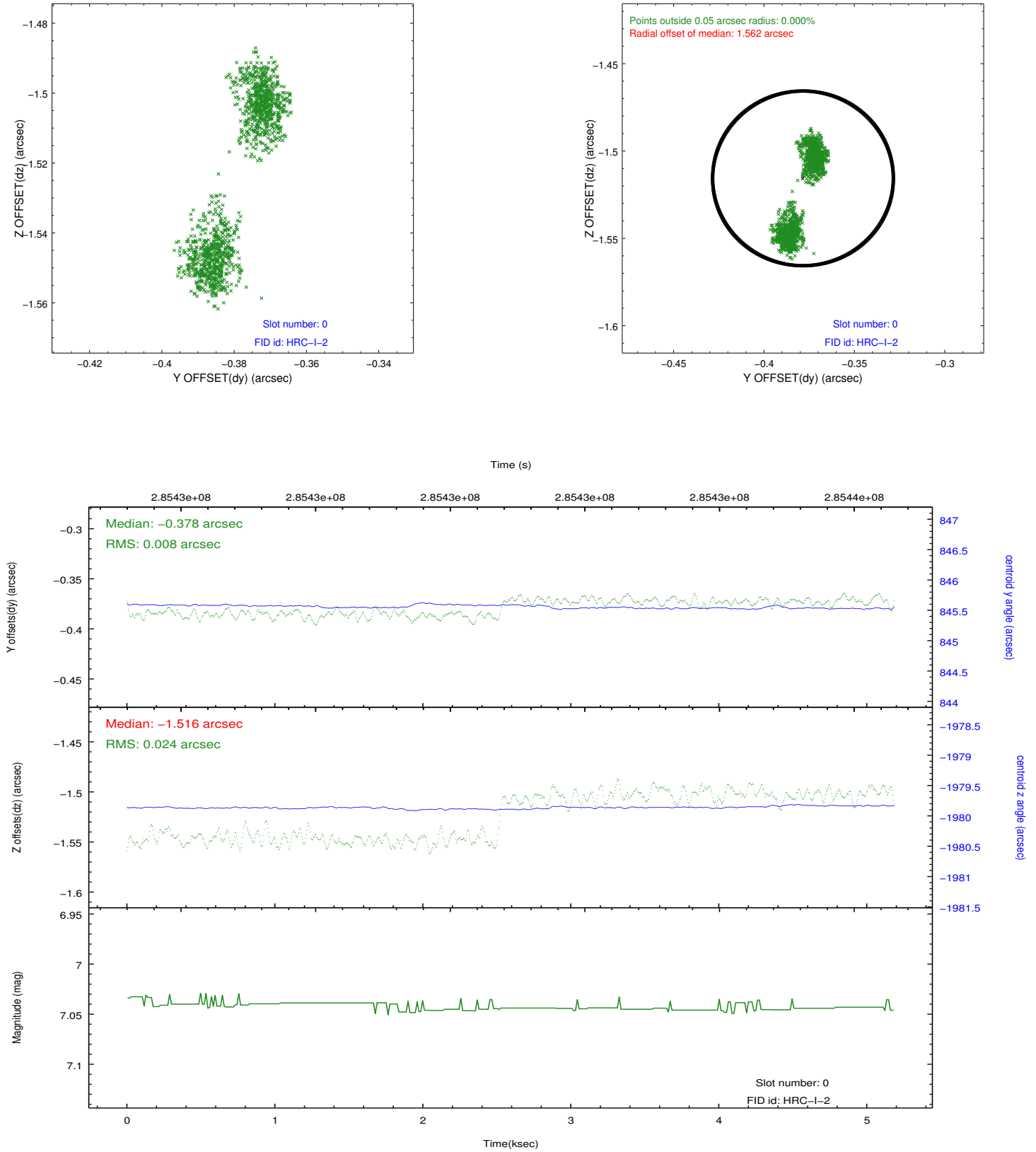


2.4.5 Slot 7

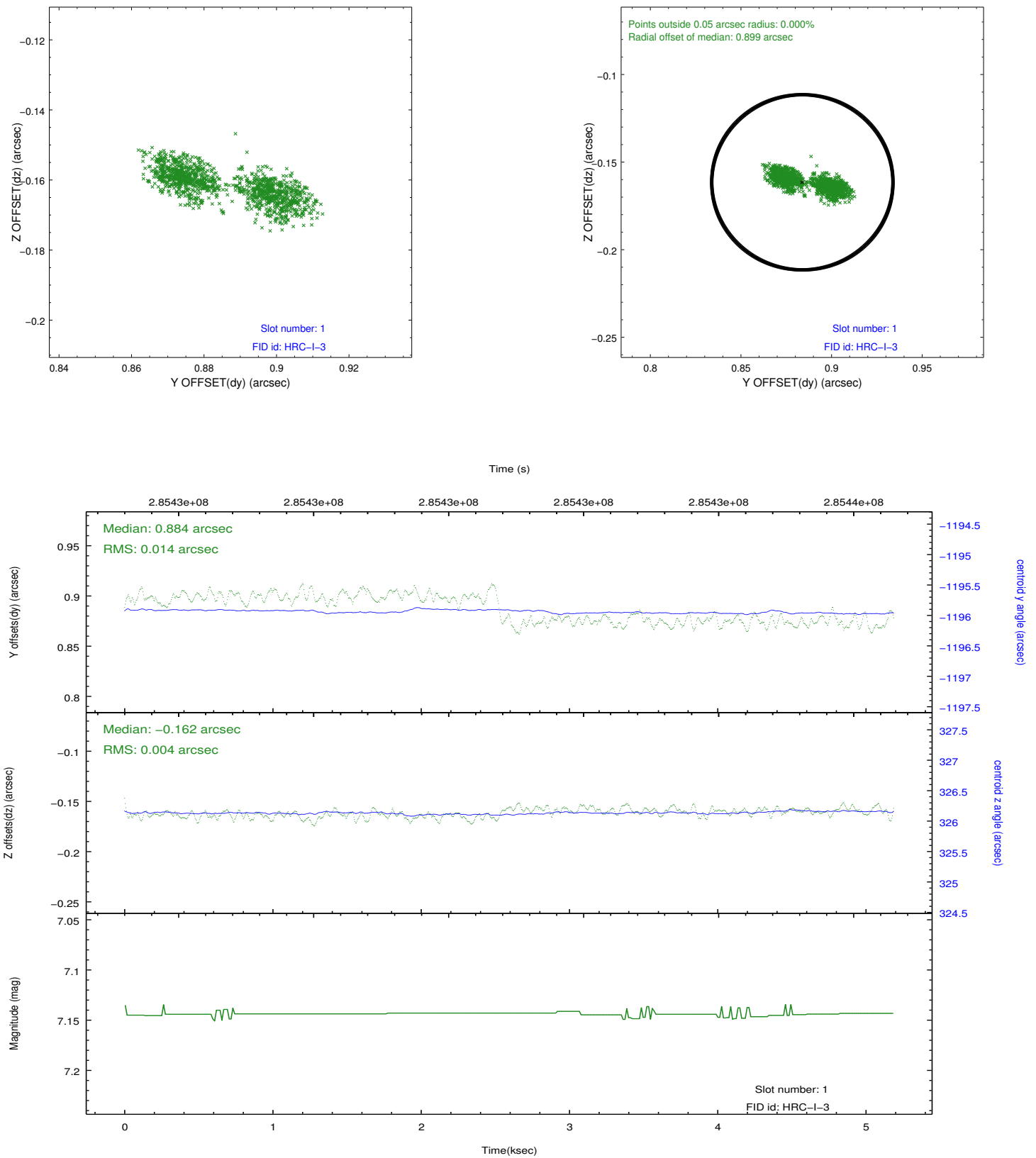


2.5 FID Slots

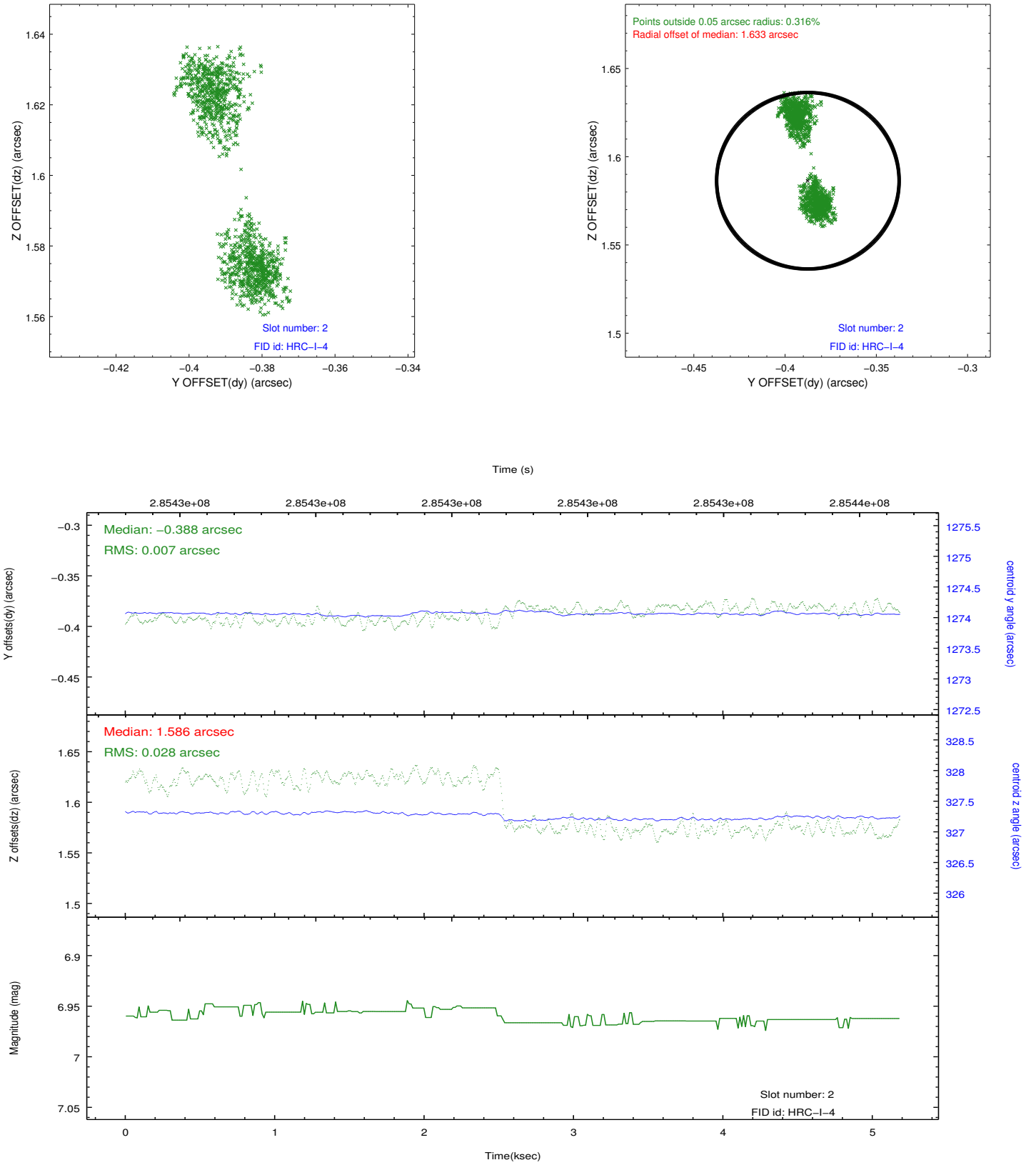
2.5.1 Slot 0



2.5.2 Slot 1



2.5.3 Slot 2



A Summary

A.1 Status

V&V Scientist	Joy Nichols
V&V Date (YYYY-MM-DD)	2012.08.23
V&V Edition	1
V&V Disposition and Status	OK
V&V Charge Time	5.18547524

A.2 Comments

This observation has a `sim_z_offset` of -33.00 [mm], and the fid radial offsets of 1.562 arcsec (slot 0), 0.899 arcsec (slot 1), and 1.633 arcsec (slot 2) are ok for Aspect.