

# V&V Reference Report

## L2 ASCDS Version : 8.4.4

Observation 8336 - L2 Version 3  
Chandra X-Ray Center

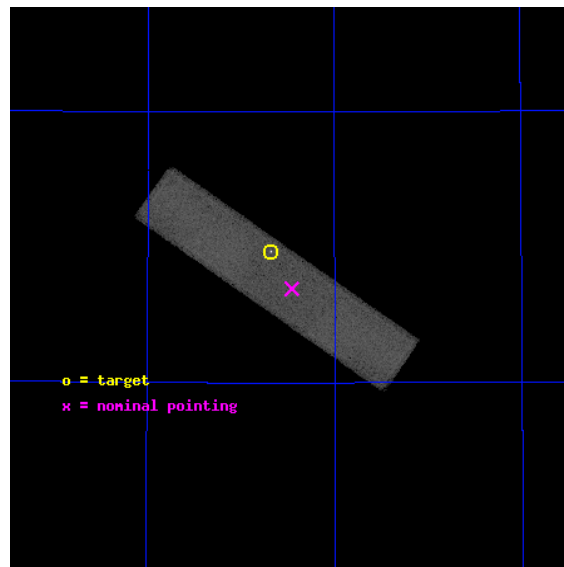
L2 Processing Date : Aug 12 2012

## Contents

<b>1</b>	<b>Front</b>	<b>2</b>
<b>2</b>	<b>OBI</b>	<b>3</b>
2.1	OBI . . . . .	3
2.1.1	Images . . . . .	3
2.1.2	Parameters . . . . .	4
2.1.3	Events . . . . .	4
2.2	Compared Parameters . . . . .	5
2.3	Aspect . . . . .	6
2.4	Star Slots . . . . .	9
2.4.1	Slot 3 . . . . .	9
2.4.2	Slot 4 . . . . .	10
2.4.3	Slot 5 . . . . .	11
2.4.4	Slot 6 . . . . .	12
2.4.5	Slot 7 . . . . .	13
2.5	FID Slots . . . . .	14
2.5.1	Slot 0 . . . . .	14
2.5.2	Slot 1 . . . . .	15
2.5.3	Slot 2 . . . . .	16
<b>A</b>	<b>Summary</b>	<b>17</b>
A.1	Status . . . . .	17
A.2	Comments . . . . .	17

# 1 Front

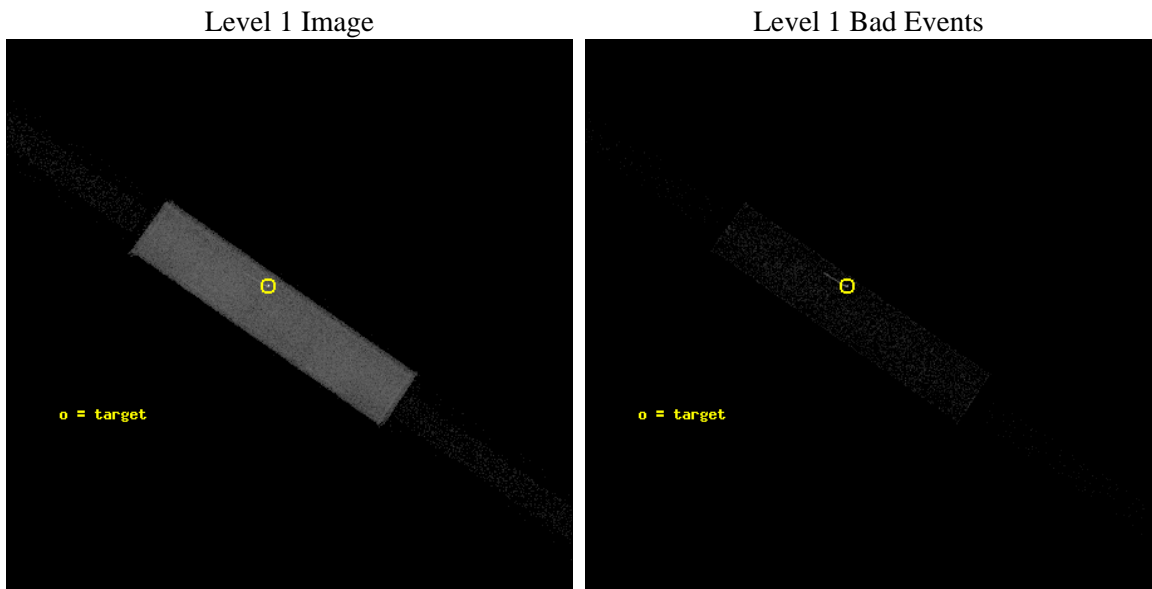
seq_num	290715	Sequence number
obs_id	8336	Observation id
title	AO8 Calibration Observations to Monitor the Spatial Variations in the HRC-S Gain	Proposal title
observer	Dr. CXC Calibration	Principal investigator
object	ArLac	Source name
ra_targ	332.17	Observer's specified target RA [deg]
dec_targ	45.742306	Observer's specified target Dec [deg]
ra_nom	332.11392587471	Nominal RA [deg]
dec_nom	45.673584991019	Nominal Dec [deg]
roll_nom	214.65596087011	Nominal Roll [deg]
revision	3	Processing version of data
ontime	1153.3813055158	[s]
livetime	1134.9388670922	Ontime multiplied by DTCOR
l2events	112909	Number of level 2 events



## 2 OBI

### 2.1 OBI

#### 2.1.1 Images



### 2.1.2 Parameters

obi_num	0	Obi number	sched_exp_time	1000.000000	[s] Scheduled observation exposure time
ascdsver	8.4.5	Processing system revision	ontime	1153.3813055158	[s]
caldbver	4.5.1.1	&#160	l1events	161688	Number of level 1 events
date	2012-08-12T04:30:19	Date and time of file creation			
revision	3	Processing version of data			

### 2.1.3 Events

Level 1 Events

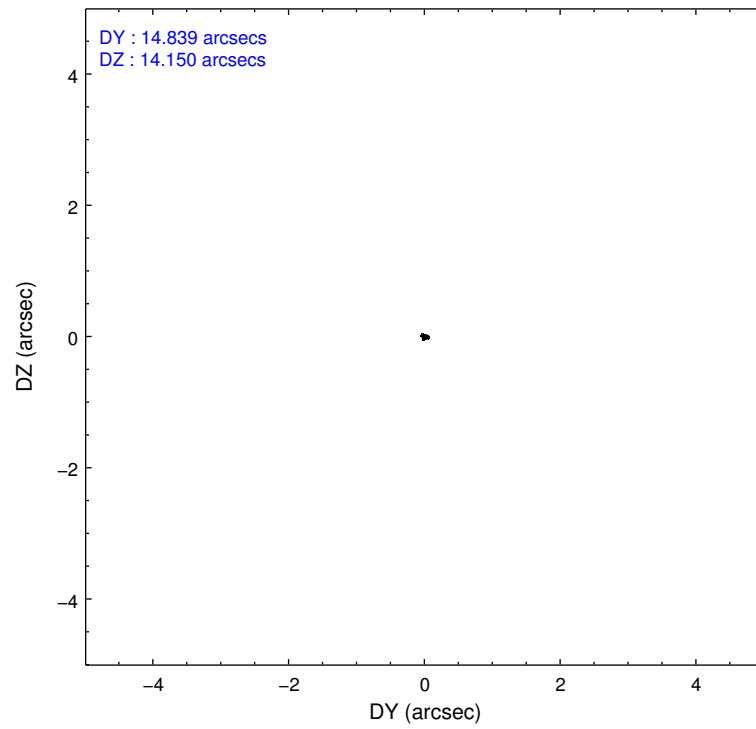
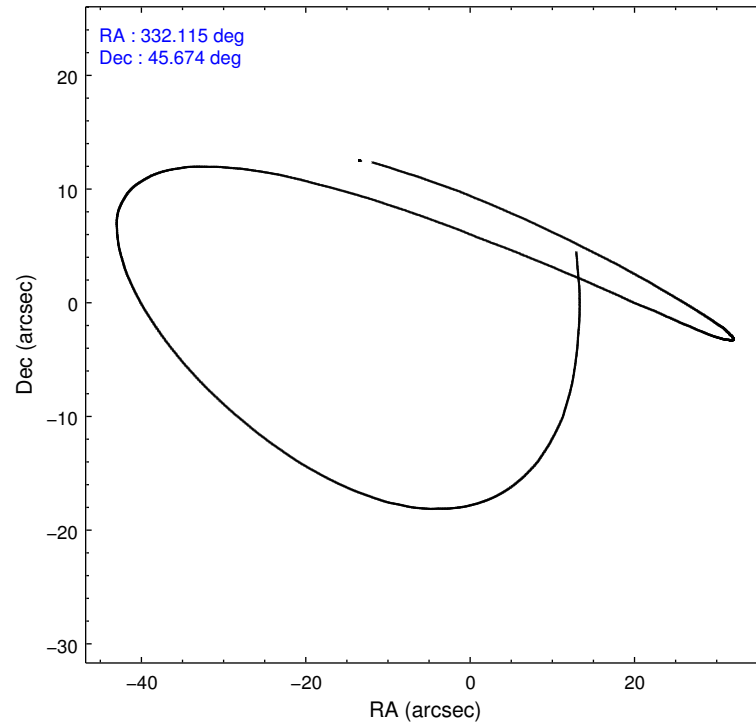
	segment 1	segment 2	segment 3
level 1 events	1573	158646	1469
rejected events	1573	31199	1469
rejected %	100%	19%	100%

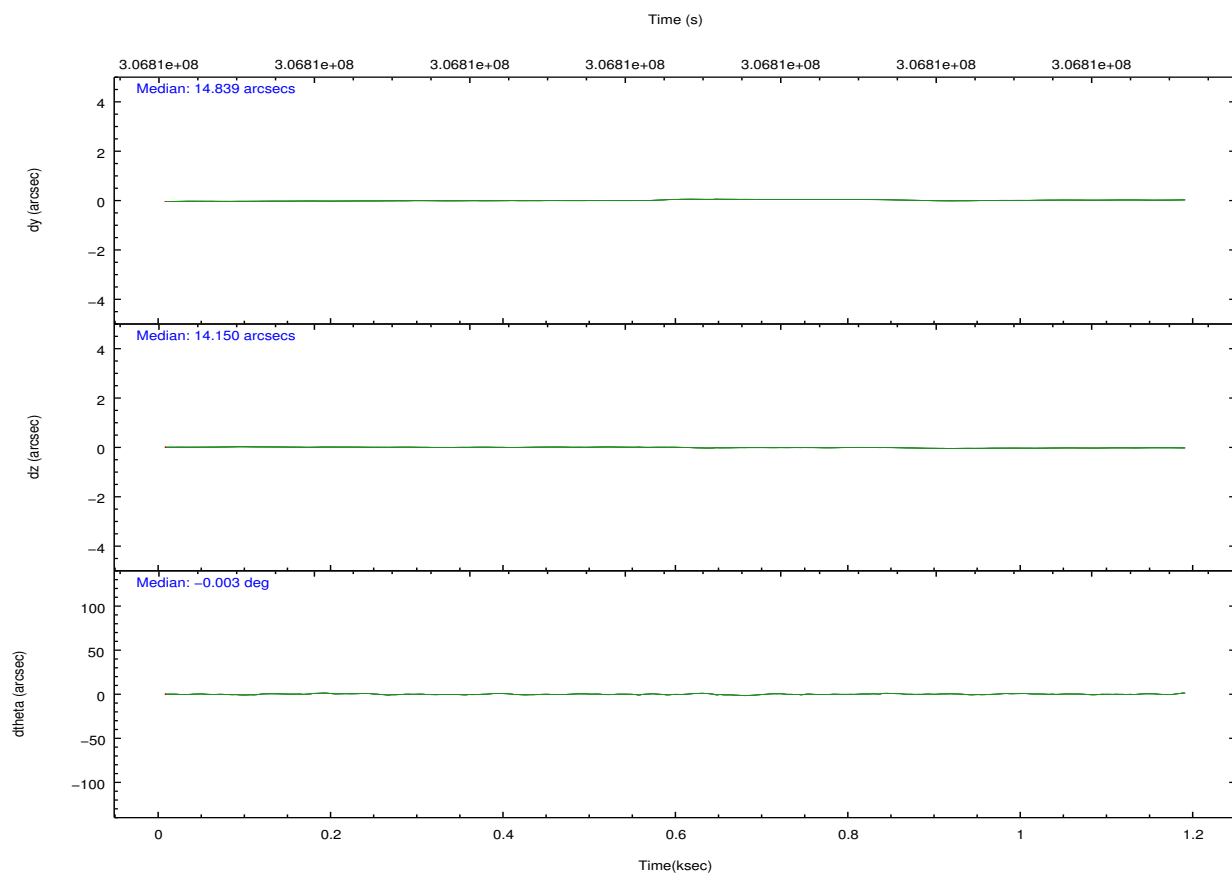
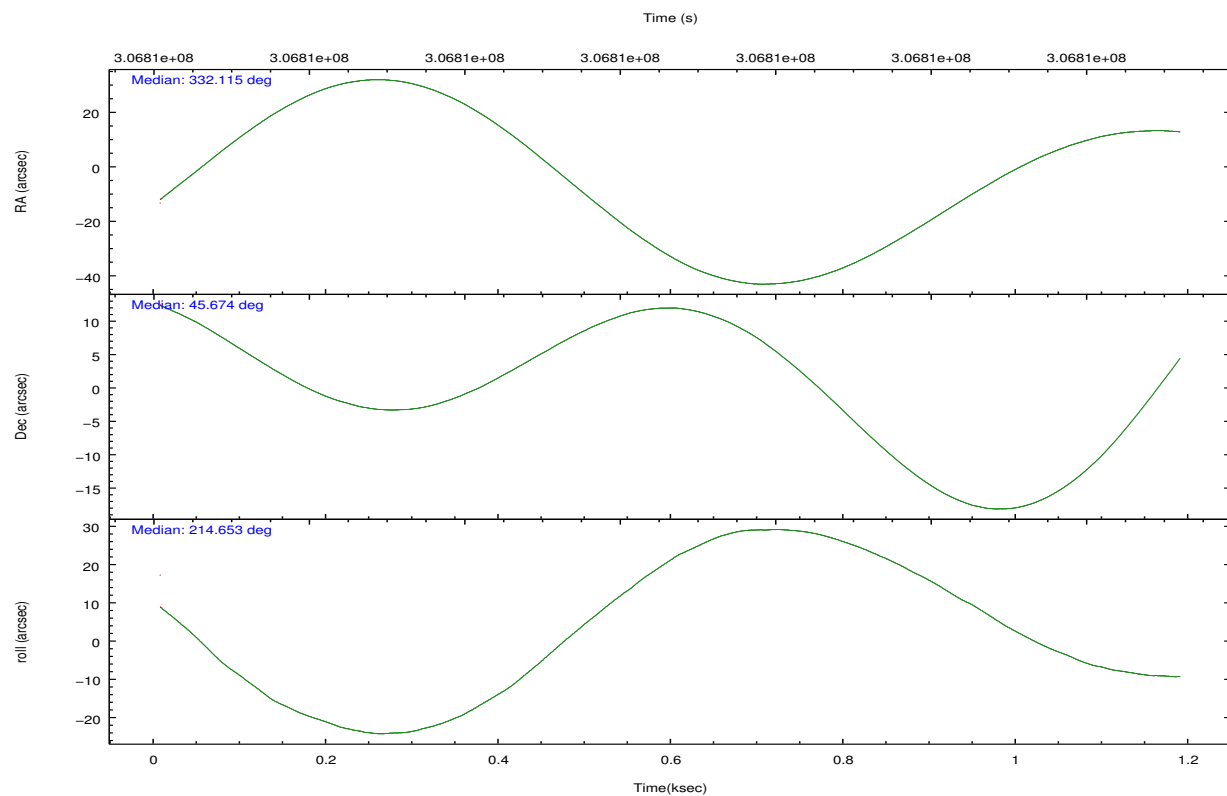
## 2.2 Compared Parameters

Parameter	Planned	Actual
Instrument	HRC	HRC
Detector	HRC-S	HRC-S
Grating	NONE	NONE
Data mode	OBSERVING	OBSERVING
Observation mode	POINTING	POINTING
[deg] Pointing RA	332.128525	332.1139258747099
[deg] Pointing Dec	45.700914	45.67358499101865
[deg] Pointing Roll	214.578161	214.6559608701138
[mm] SIM focus pos	-1.533336	-1.526339935833849
[mm] SIM defocus	7.710433287538843e-07	0.006996703570447904
[mm] SIM translation stage pos	250.455976	250.466033080201
[mm] SIM translation stage offset	0	-0.01005468664627074
[s] Observation start time (MET)	306808863.184000	306808488.10669
Observation start date	2007-09-22T00:39:58	2007-09-22T00:34:48
[s] Observation end time (MET)	306809863.184000	306809997.93176
Observation end date	2007-09-22T00:56:38	2007-09-22T00:59:57

Parameter	Planned	Actual
Obspar format version number	7	7
Obspar file type	PREDICTED	ACTUAL
Obspar update status	NONE	UPDATED

## 2.3 Aspect





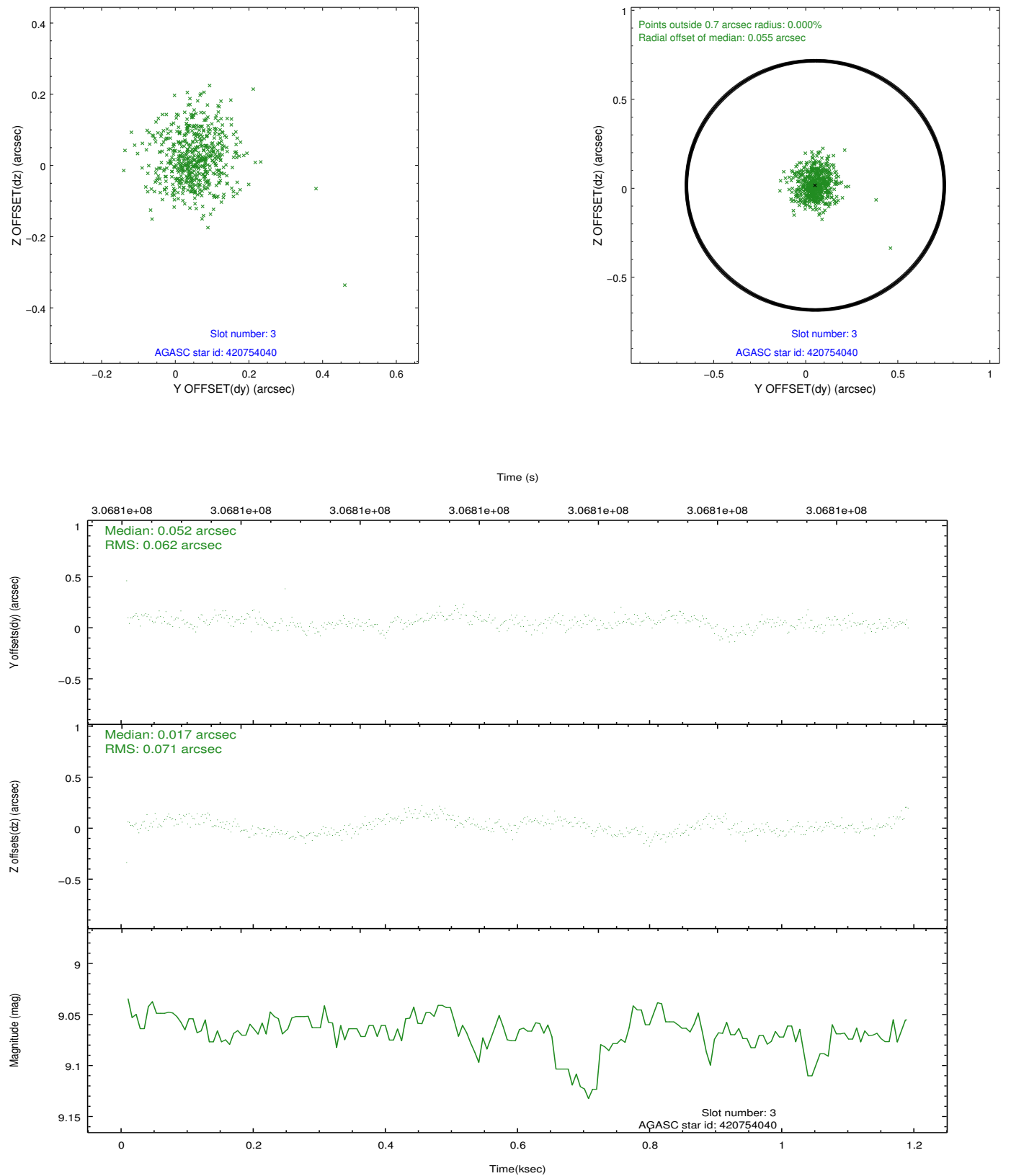
### Slot Statistics

slot	status	id	mag	n_pts	med_dy	med_dz	dr1	dr2	ra	dec	mean_y	mean_z
0	FID	HRC-S-1	7.07	289	0.096	-0.220	0.007	0.014	0.000000	0.000000	-1169.22	-463.02
1	FID	HRC-S-2	7.05	289	0.172	-0.103	0.004	0.008	0.000000	0.000000	1226.46	-457.16
2	FID	HRC-S-3	7.06	289	0.123	0.022	0.007	0.013	0.000000	0.000000	-1167.67	565.16
3	GUIDE	420754040	9.07	577	0.052	0.017	0.096	0.157	331.917939	44.882543	2114.04	2116.96
4	GUIDE	472523760	8.23	578	0.056	-0.091	0.066	0.107	331.645363	45.403260	1616.37	186.01
5	GUIDE	472525528	6.64	578	-0.238	0.001	0.074	0.136	331.551102	45.248694	2129.47	502.16
6	GUIDE	472655152	9.41	578	0.073	-0.093	0.130	0.228	332.504239	45.862991	-1103.14	49.38
7	GUIDE	472533912	9.16	577	0.038	0.159	0.121	0.187	331.791136	46.368695	-676.11	-2460.03

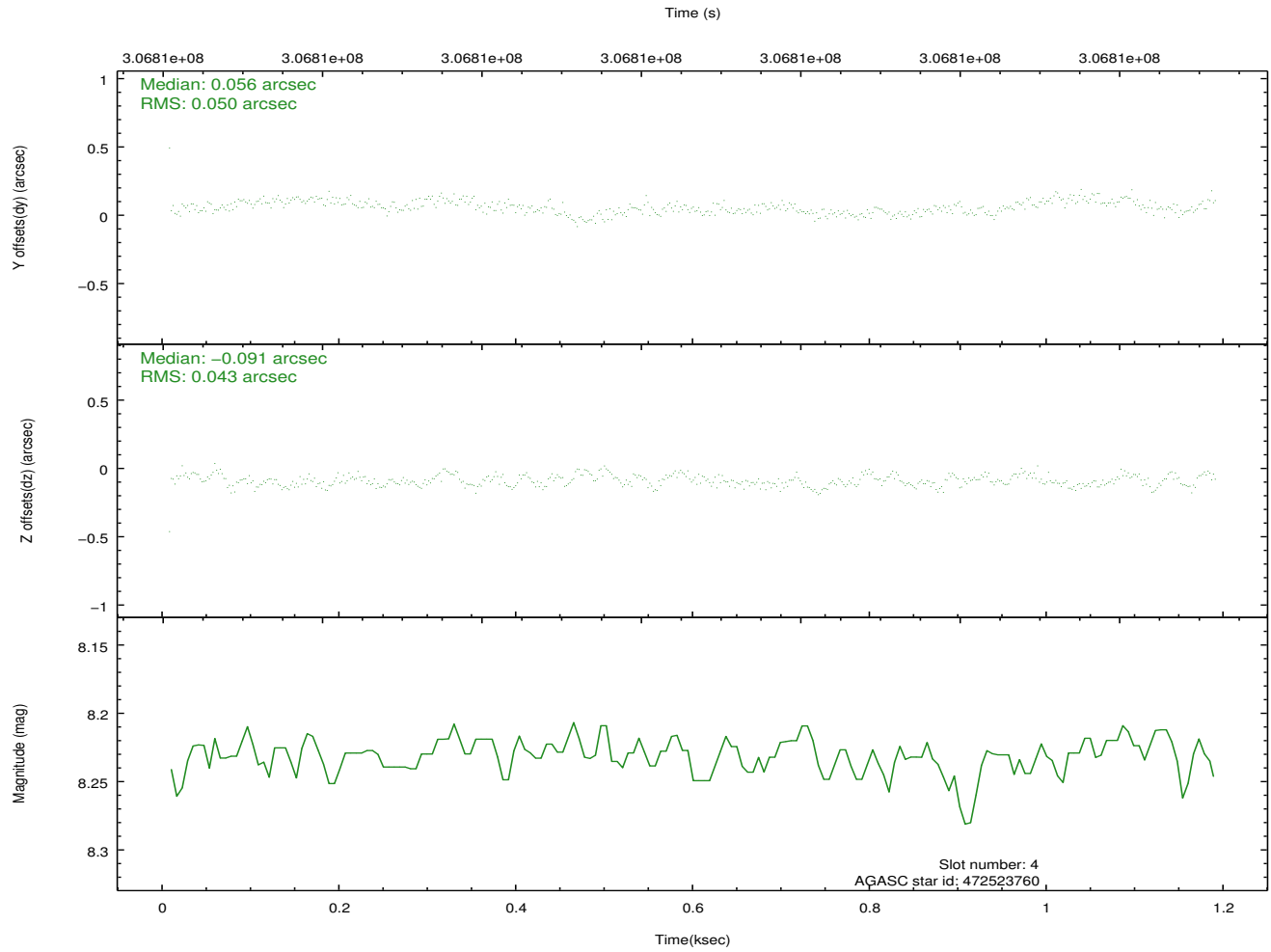
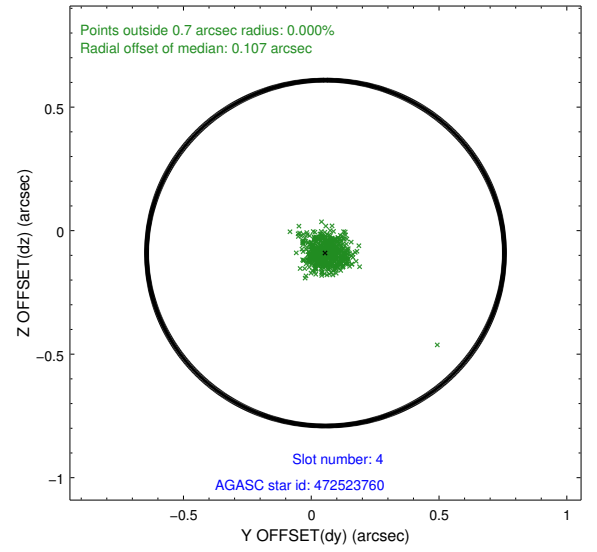
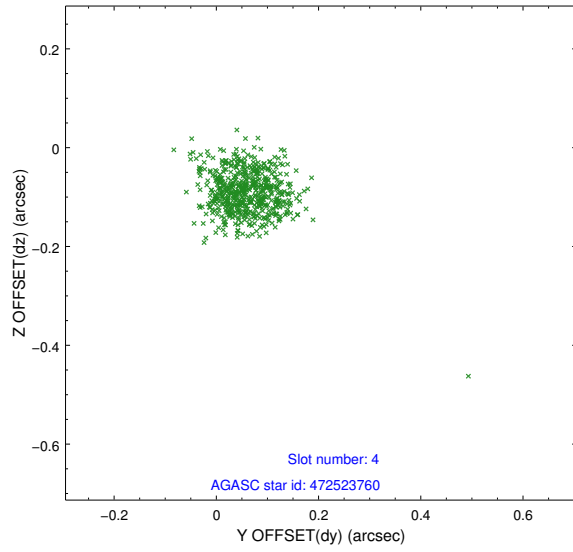


## 2.4 Star Slots

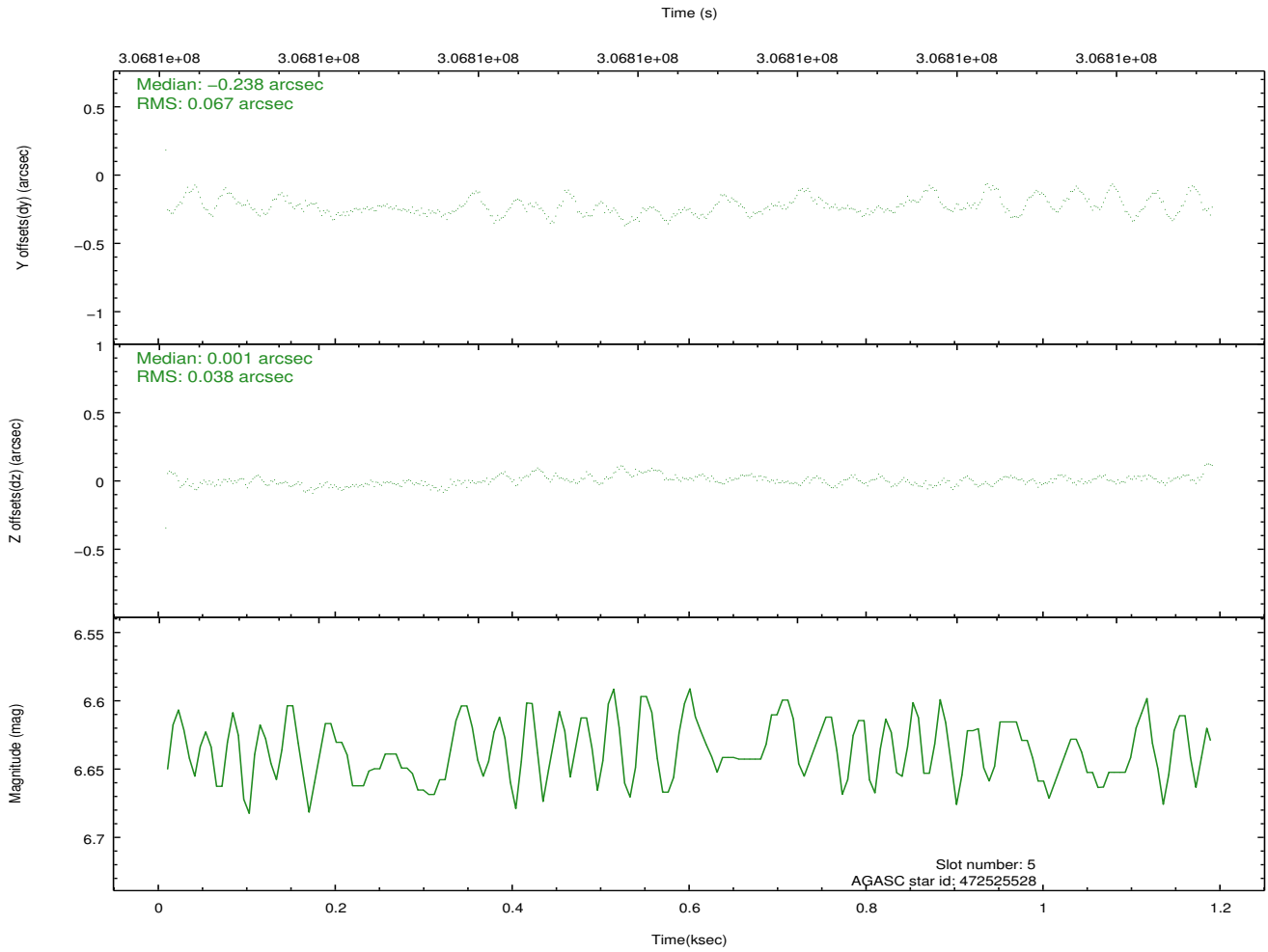
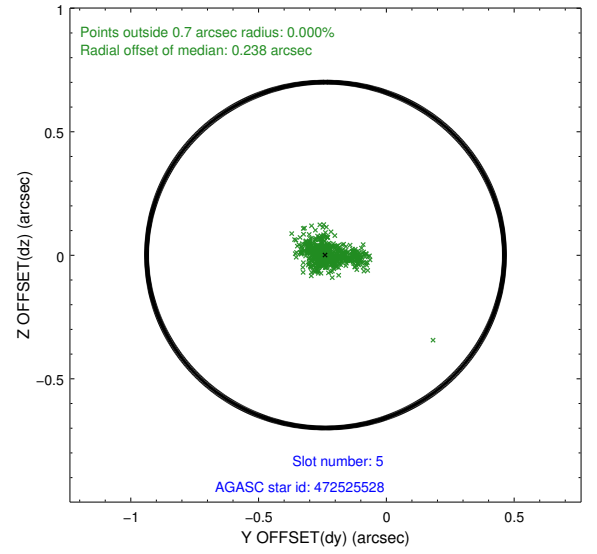
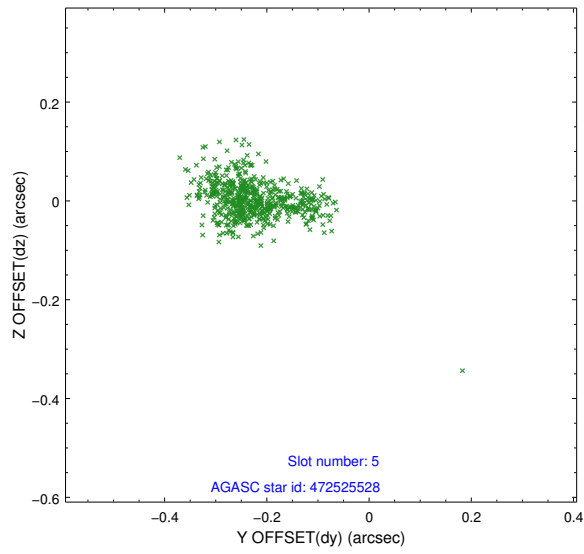
### 2.4.1 Slot 3



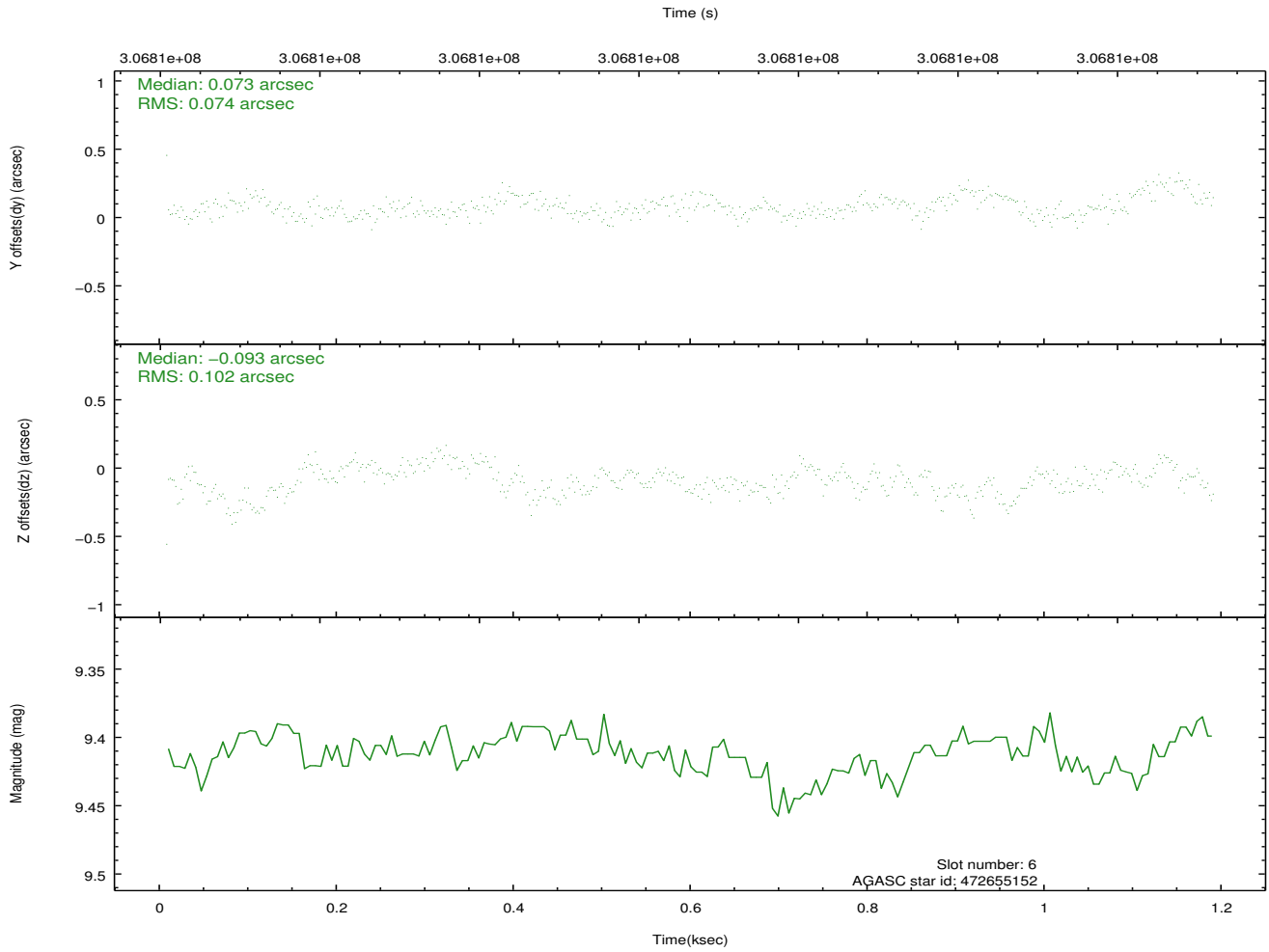
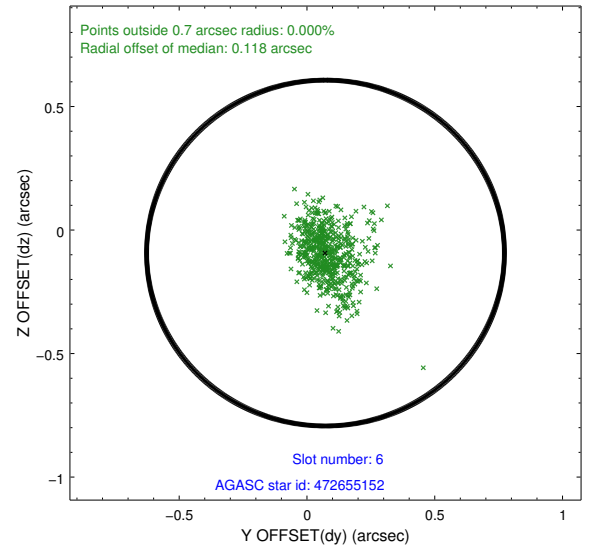
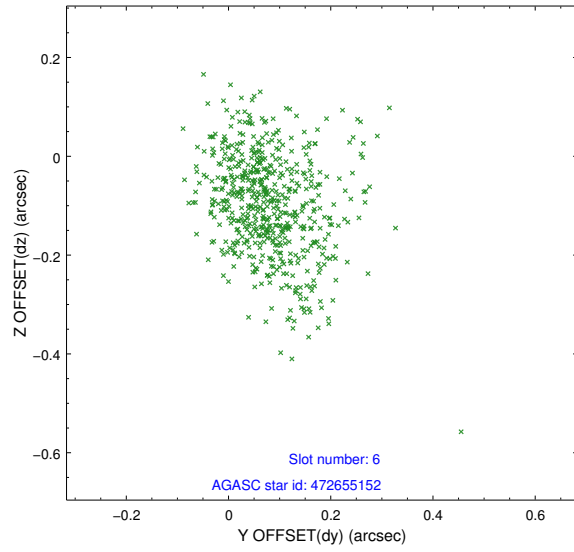
## 2.4.2 Slot 4



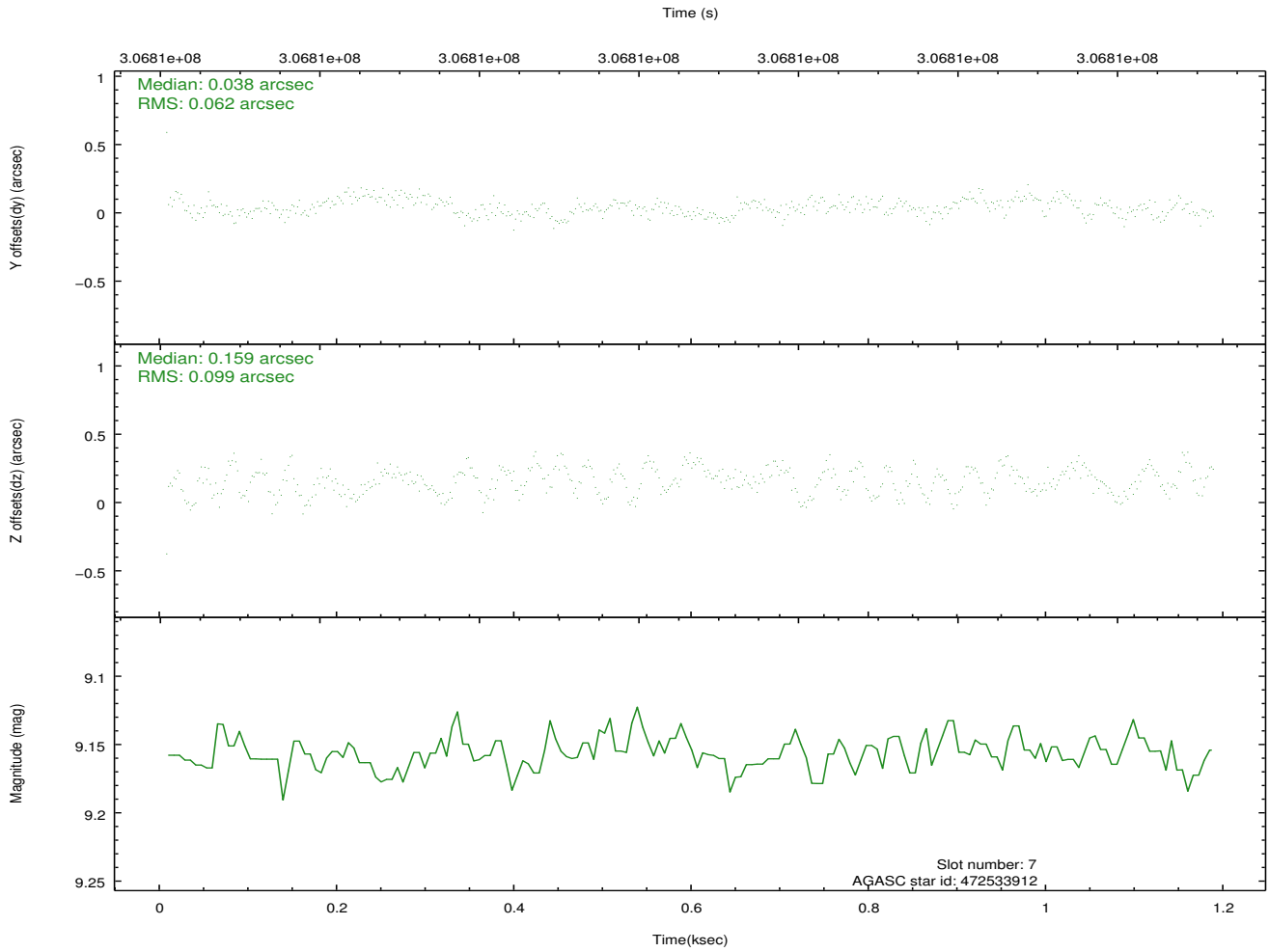
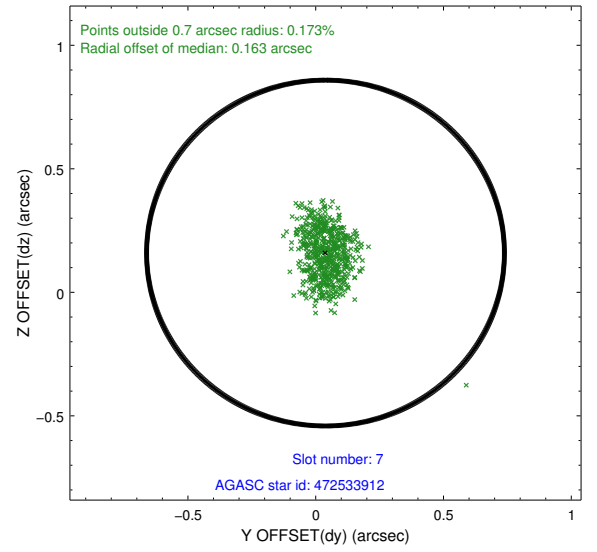
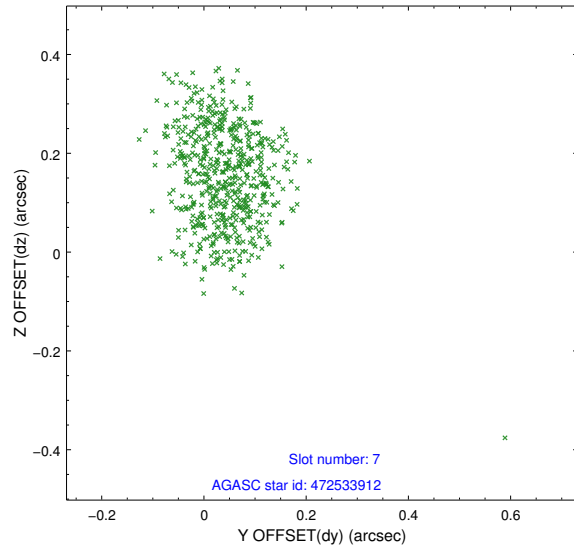
### 2.4.3 Slot 5



## 2.4.4 Slot 6

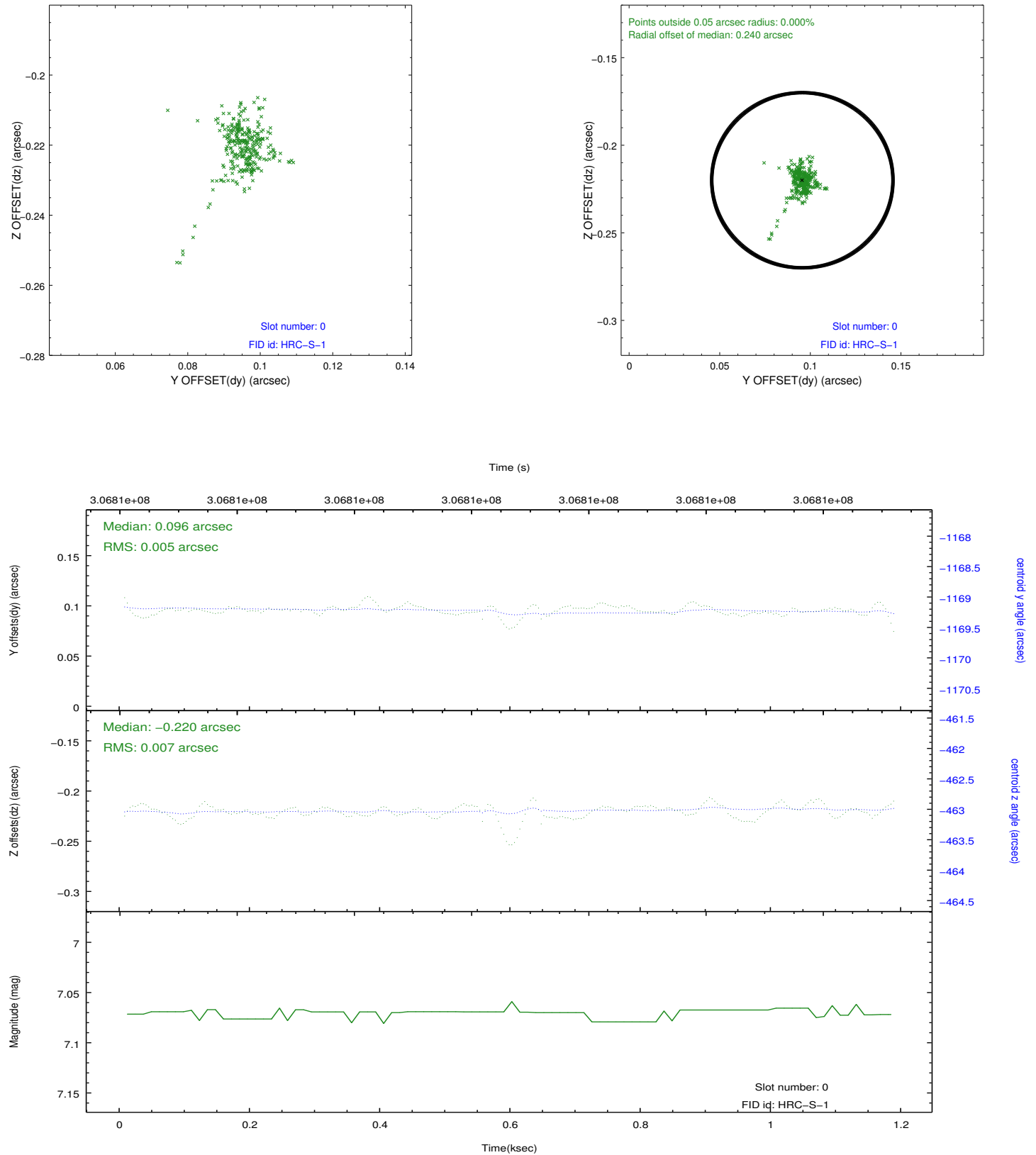


## 2.4.5 Slot 7

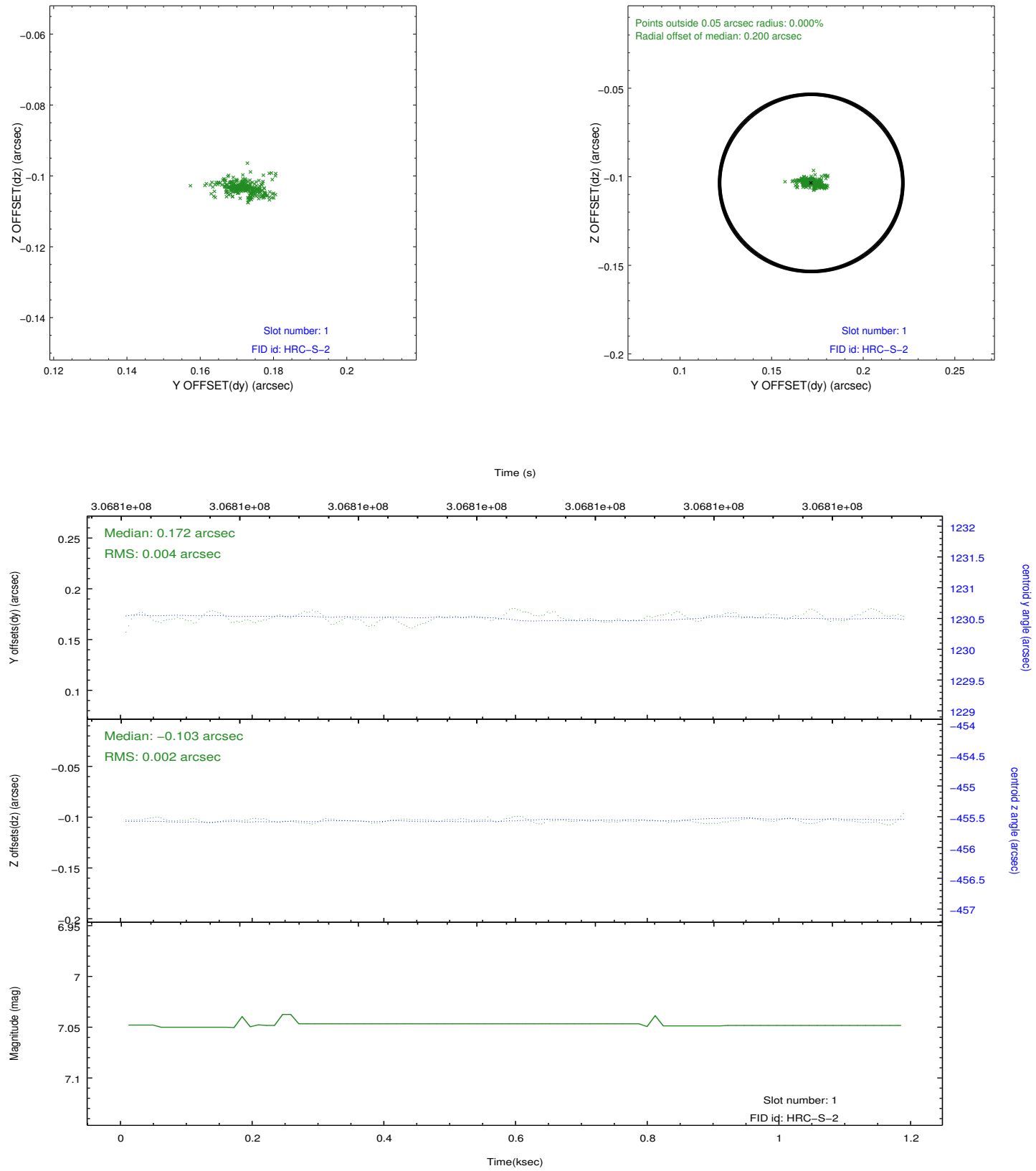


## 2.5 FID Slots

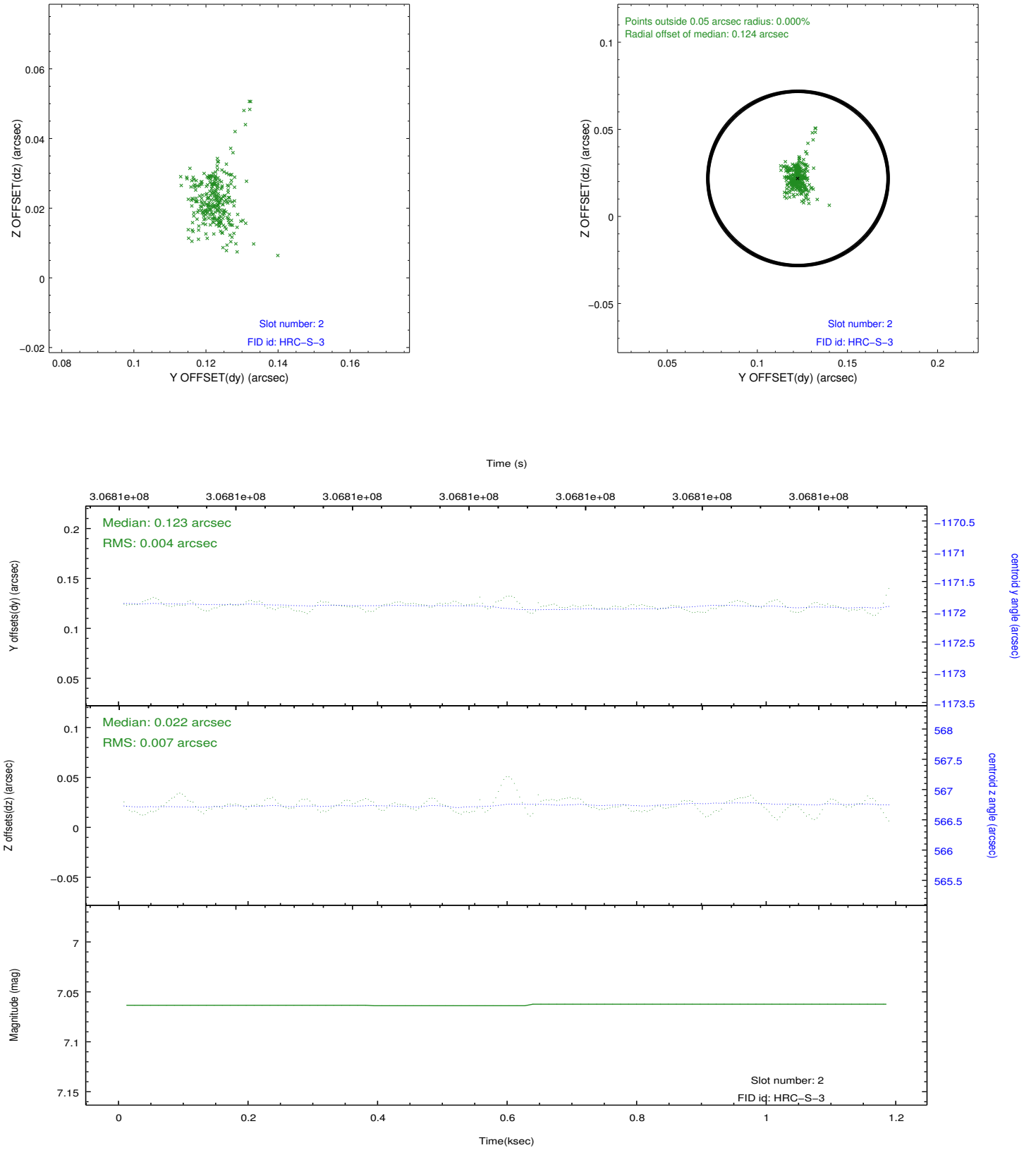
### 2.5.1 Slot 0



## 2.5.2 Slot 1



### 2.5.3 Slot 2





## A Summary

### A.1 Status

V&V Scientist	Jen Lauer
V&V Date (YYYY-MM-DD)	2012.08.15
V&V Edition	1
V&V Disposition and Status	OK
V&V Charge Time	1.1533813

### A.2 Comments