

V&V Reference Report

L2 ASCDS Version : 8.5.1.1

Observation 6082 - L2 Version 3
Chandra X-Ray Center

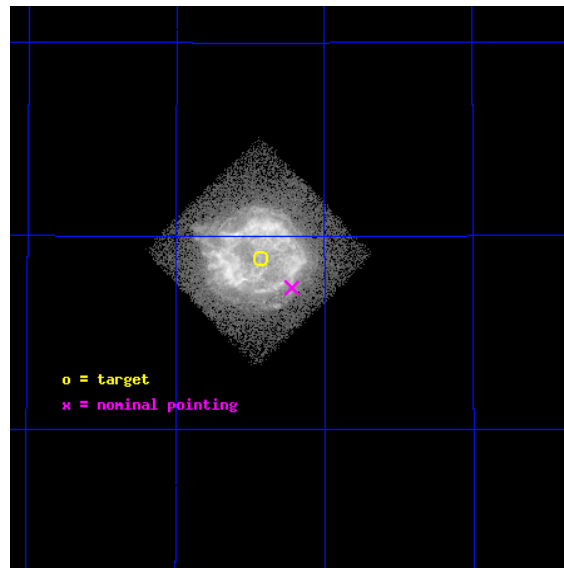
L2 Processing Date : Dec 30 2012

Contents

1	Front	2
2	OBI	3
2.1	OBI	3
2.1.1	Images	3
2.1.2	Bias	3
2.1.3	Parameters	4
2.1.4	Events	4
2.2	Compared Parameters	5
2.3	Aspect	6
2.4	Star Slots	9
2.4.1	Slot 3	9
2.4.2	Slot 4	10
2.4.3	Slot 5	11
2.4.4	Slot 6	12
2.4.5	Slot 7	13
2.5	FID Slots	14
2.5.1	Slot 0	14
2.5.2	Slot 1	15
2.5.3	Slot 2	16
A	Summary	17
A.1	Status	17
A.2	Comments	17

1 Front

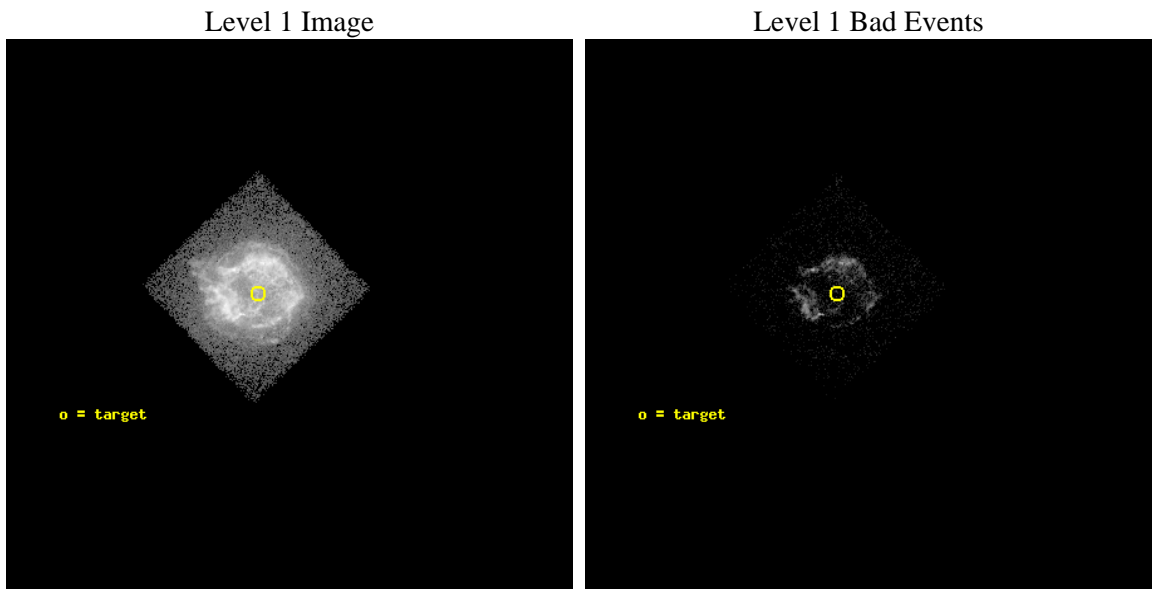
seq_num	590409	Sequence number
obs_id	6082	Observation id
title	AO6B Observations of the Standard Candles Cas A and G21.5-09	Propo
observer	Dr. CXC Calibration	Principal investigator
object	Cas A[S3,-120,-2.0,0,0]	Source name
dtcycle	0	
cycle	P	events from which exps? Prim/Second/Both
ra_targ	350.8575	Observer's specified target RA [deg]
dec_targ	58.814833	Observer's specified target Dec [deg]
ra_nom	350.80493795874	Nominal RA [deg]
dec_nom	58.789043448277	Nominal Dec [deg]
roll_nom	226.2090295127	Nominal Roll [deg]
revision	3	Processing version of data
ontime	1244.1440755725	Sum of GTIs [s]
livetime	1228.389974154	Livetime [s]
ontime2	1986.3716340959	Sum of GTIs [s]
ontime3	2041.3042989671	Sum of GTIs [s]
ontime5	2041.3863789737	Sum of GTIs [s]
ontime6	2041.3453389704	Sum of GTIs [s]
ontime7	1244.1440755725	Sum of GTIs [s]
ontime8	2041.2632589936	Sum of GTIs [s]
l2events	366109	Number of level 2 events



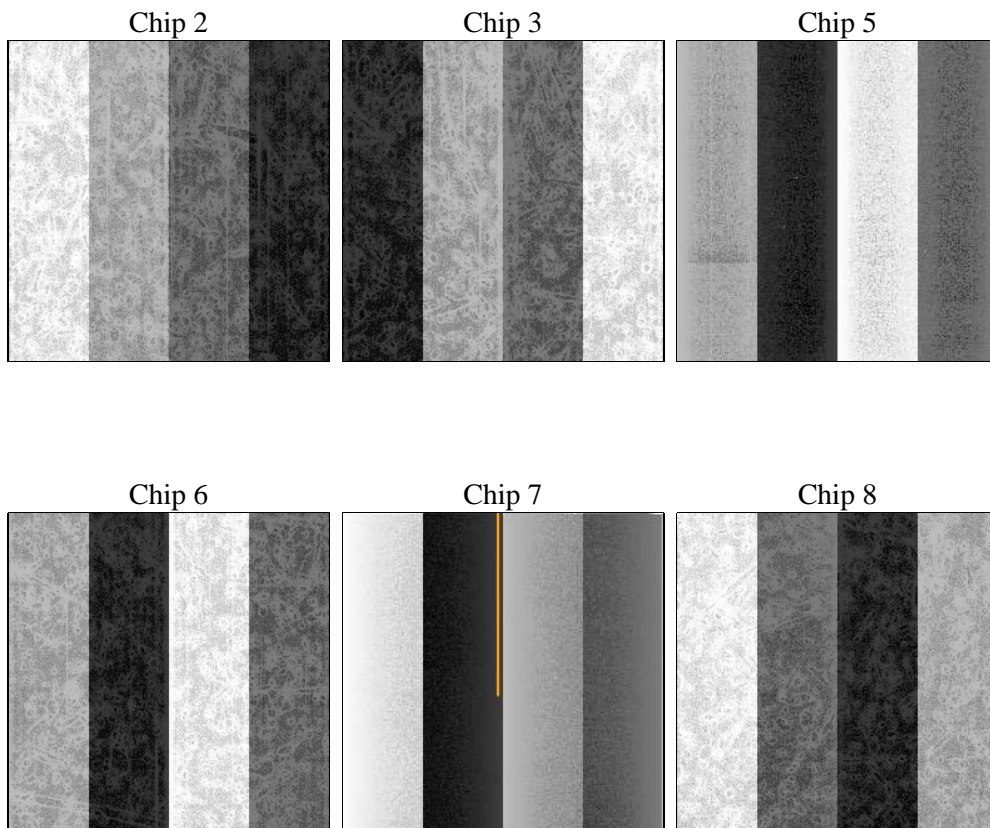
2 OBI

2.1 OBI

2.1.1 Images



2.1.2 Bias



2.1.3 Parameters

obi_num	0	Obi number	sched_exp_time	2000.000000	[s] Scheduled observation exposure time
ascdsver	8.5.1.1	Processing system revision	ontime	1244.1440755725	Sum of GTIs [s]
caldbver	4.5.5	 	ontime2	1986.3716340959	Sum of GTIs [s]
date	2012-12-30T22:08:08	Date and time of file creation	ontime3	2041.3042989671	Sum of GTIs [s]
revision	3	Processing version of data	ontime5	2041.3863789737	Sum of GTIs [s]
			ontime6	2041.3453389704	Sum of GTIs [s]
			ontime7	1244.1440755725	Sum of GTIs [s]
			ontime8	2041.2632589936	Sum of GTIs [s]
			l1events	391818	Number of level 1 events

2.1.4 Events

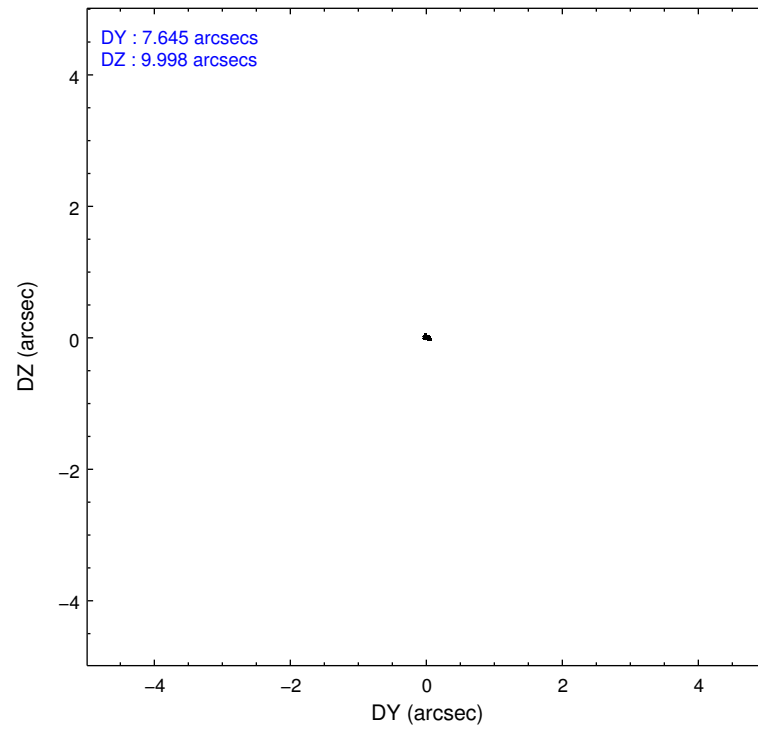
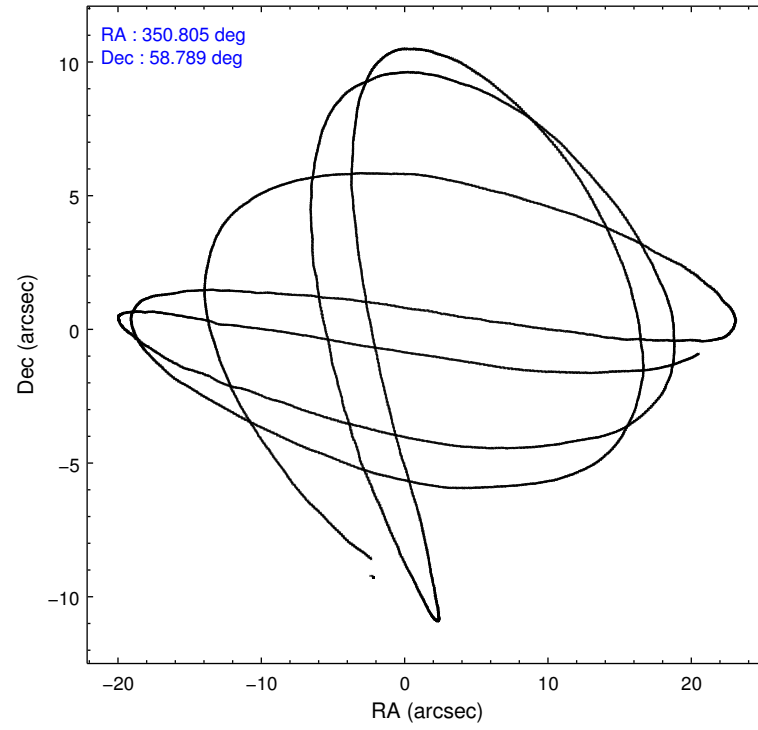
	ccd 2	ccd 3	ccd 5	ccd 6	ccd 7	ccd 8
level 1 events	0	0	0	0	391818	0
rejected events	0	0	0	0	21596	0
rejected %	0%	0%	0%	0%	5%	0%

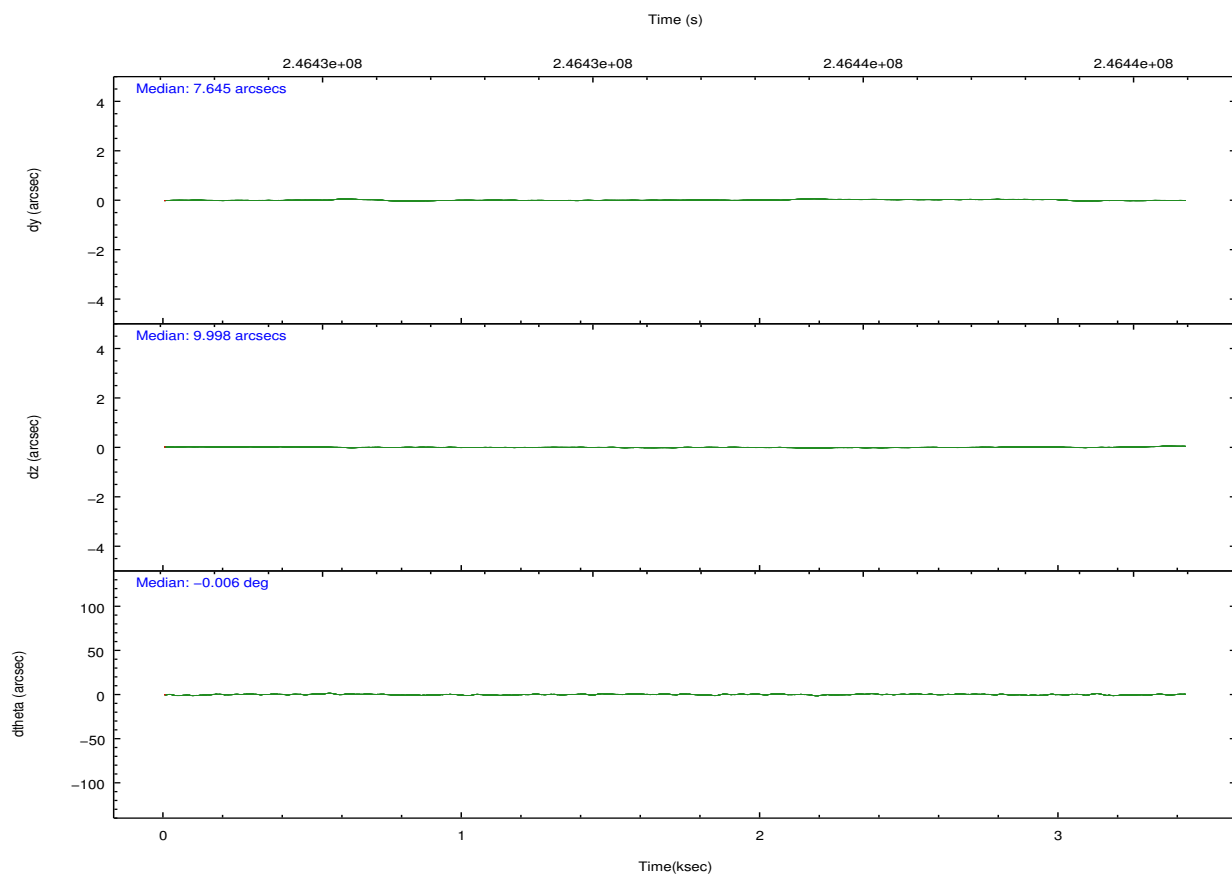
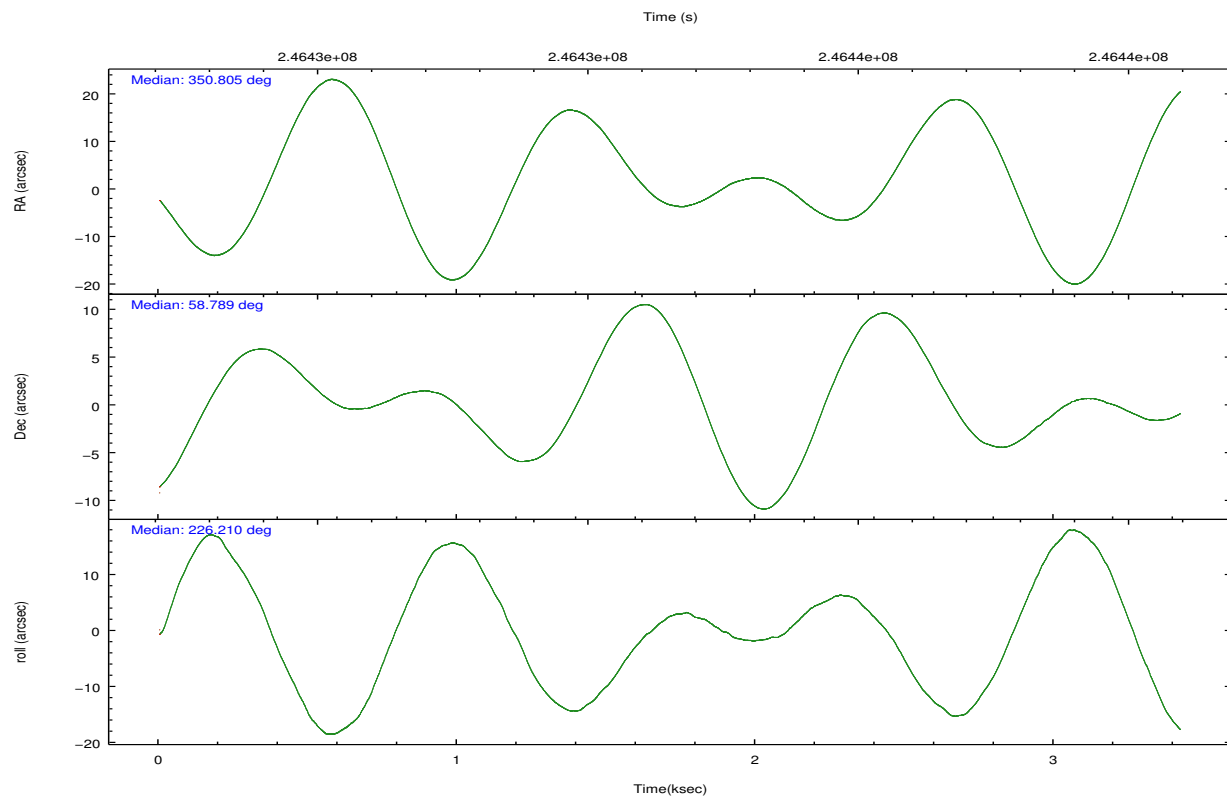
	ccd 2	ccd 3	ccd 5	ccd 6	ccd 7	ccd 8
grade 0 events	0	0	0	0	94525	0
	0%	0%	0%	0%	24%	0%
grade 1 events	0	0	0	0	1923	0
	0%	0%	0%	0%	0%	0%
grade 2 events	0	0	0	0	99200	0
	0%	0%	0%	0%	25%	0%
grade 3 events	0	0	0	0	43466	0
	0%	0%	0%	0%	11%	0%
grade 4 events	0	0	0	0	43150	0
	0%	0%	0%	0%	11%	0%
grade 5 events	0	0	0	0	7385	0
	0%	0%	0%	0%	1%	0%
grade 6 events	0	0	0	0	90800	0
	0%	0%	0%	0%	23%	0%
grade 7 events	0	0	0	0	11369	0
	0%	0%	0%	0%	2%	0%

2.2 Compared Parameters

Parameter	Planned	Actual	Parameter	Planned	Actual
Instrument	ACIS	ACIS	Obspar format version number	7	7
Detector	ACIS-235678	ACIS-235678	Obspar file type	PREDICTED	ACTUAL
Grating	NONE	NONE	Obspar update status	NONE	UPDATED
Data mode	FAINT	FAINT	Number of optional ACIS chips dropped	0	0
Observation mode	POINTING	POINTING	On-chip summing requested	N	N
[deg] Pointing RA	350.816947	350.8049379587438	Subarray requested	NONE	NONE
[deg] Pointing Dec	58.815633	58.78904344827702	Alternating exposures requested	N	N
[deg] Pointing Roll	226.042116	226.2090295127004	[s] Primary exposure time	0.000000	3.2
[s] Window start time (MET)	241920064.184000	241920064.184000			
[s] Window stop time (MET)	249696064.184000	249696064.184000			
[mm] SIM focus pos	-0.684267	-0.6828225247311905			
[mm] SIM defocus	0	0.001444936568705701			
[mm] SIM translation stage pos	-190.132523	-190.1425803651734			
[mm] SIM translation stage offset	0	0.01005778216563158			
[s] Observation start time (MET)	246434020.184000	246432399.29992			
Observation start date	2005-10-23T05:52:36	2005-10-23T05:26:39			
[s] Observation end time (MET)	246436020.184000	246436209.73759			
Observation end date	2005-10-23T06:25:56	2005-10-23T06:30:09			
Read mode	TIMED	TIMED			

2.3 Aspect



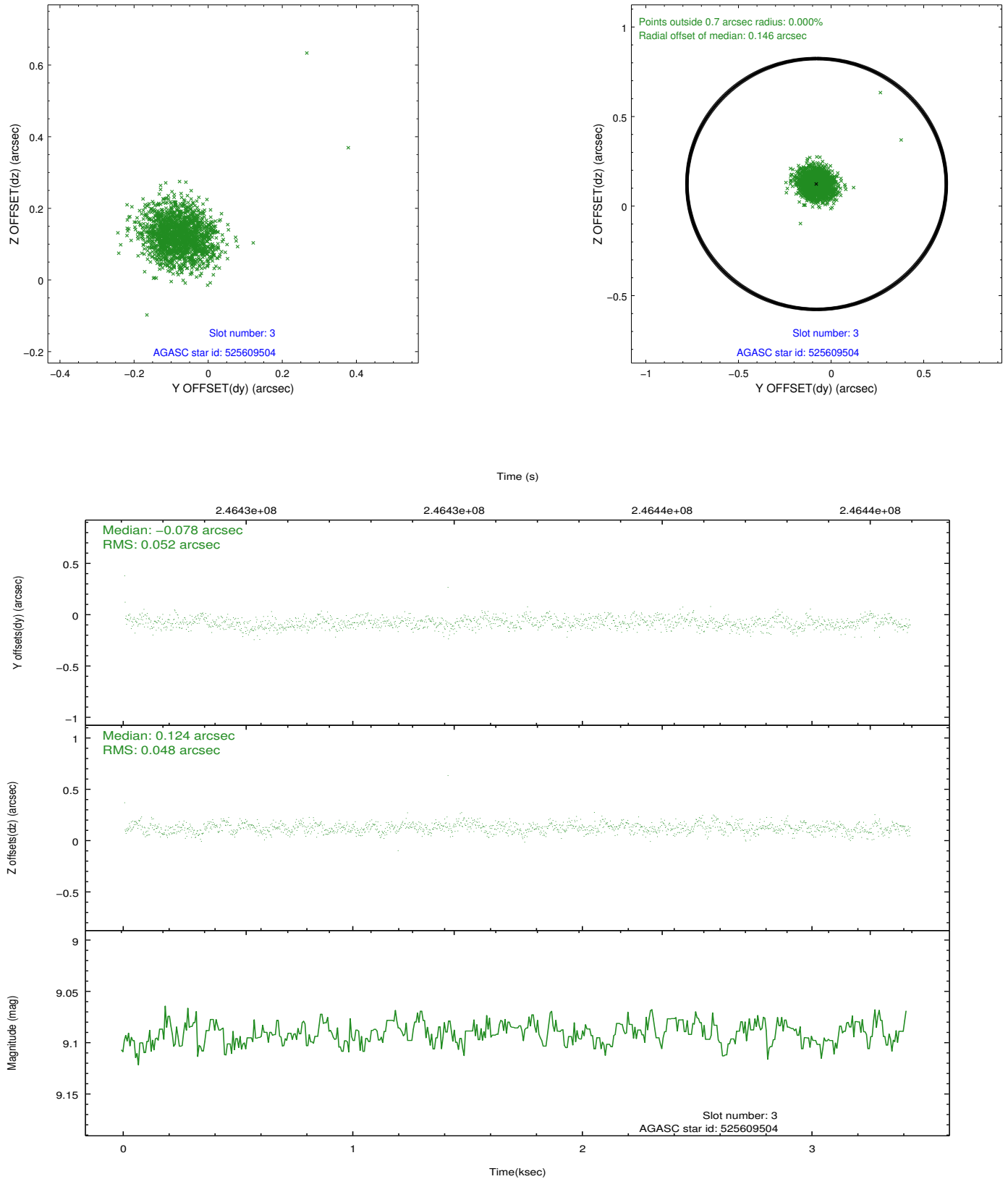


Slot Statistics

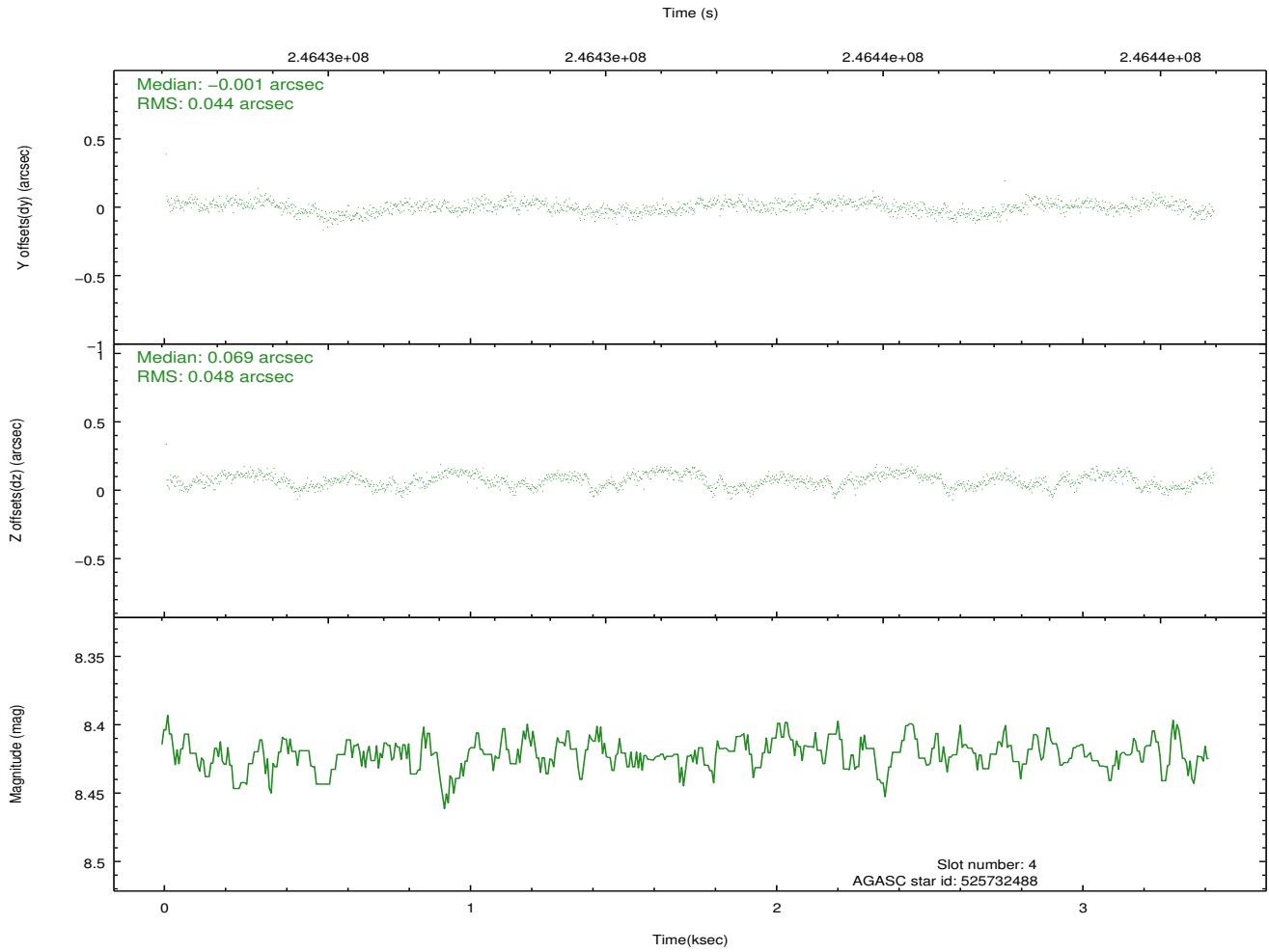
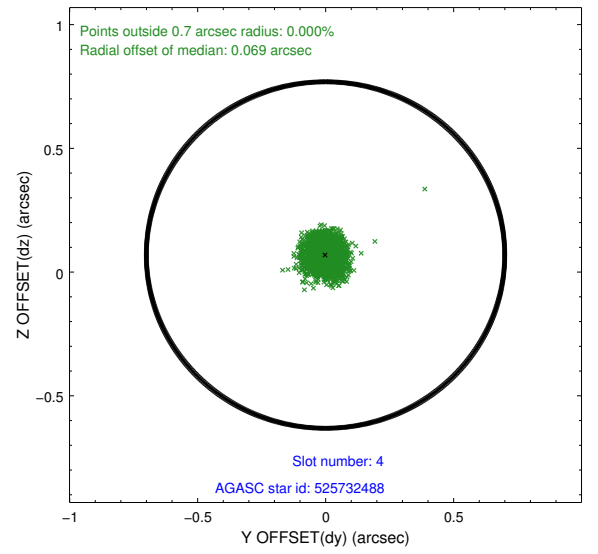
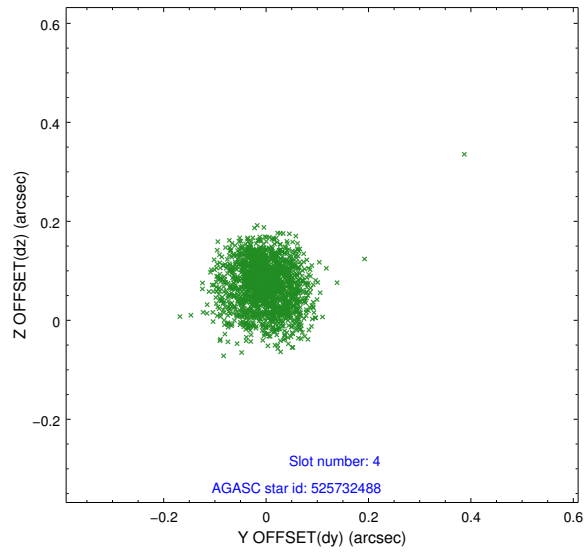
slot	status	id	mag	n_pts	med_dy	med_dz	dr1	dr2	ra	dec	mean_y	mean_z
0	FID	ACIS-S-2	7.11	835	-0.053	-0.023	0.008	0.013	0.000000	0.000000	-760.42	-1731.24
1	FID	ACIS-S-4	7.21	835	0.112	0.031	0.007	0.012	0.000000	0.000000	2152.13	175.46
2	FID	ACIS-S-5	7.23	835	-0.090	0.000	0.009	0.015	0.000000	0.000000	-1810.98	171.10
3	GUIDE	525609504	9.09	1668	-0.078	0.124	0.073	0.114	349.896632	58.356658	2387.40	-112.31
4	GUIDE	525732488	8.42	1670	-0.001	0.069	0.069	0.106	350.087090	58.516915	1722.59	-246.17
5	GUIDE	525732528	9.37	1668	0.183	-0.005	0.090	0.146	351.607241	59.298932	-2265.58	-167.87
6	GUIDE	525735456	6.78	1664	-0.085	-0.030	0.043	0.071	350.628183	59.307249	-1034.95	-1478.34
7	GUIDE	525735976	8.85	1669	-0.016	-0.155	0.066	0.105	350.142956	58.277622	2274.65	420.83

2.4 Star Slots

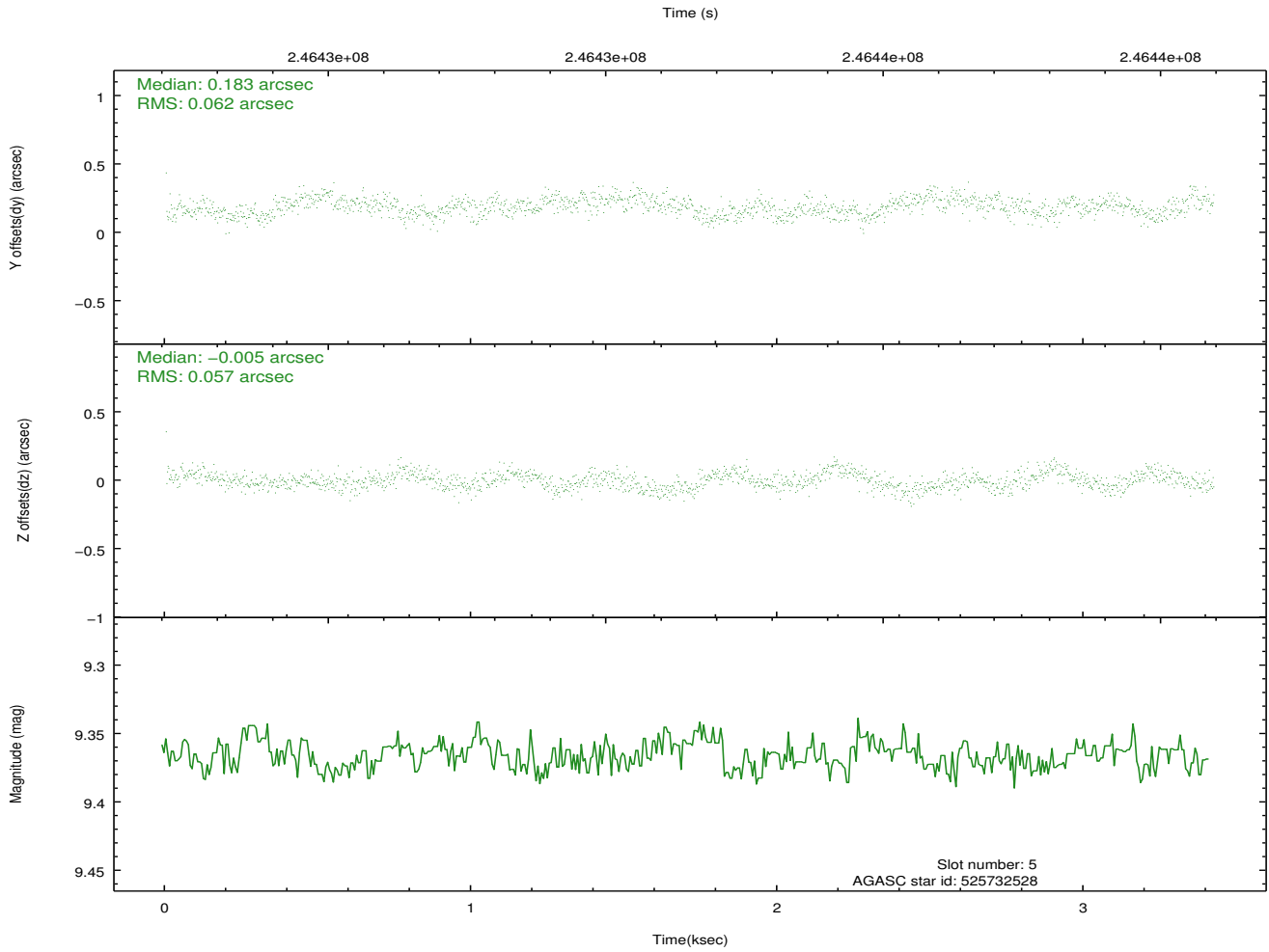
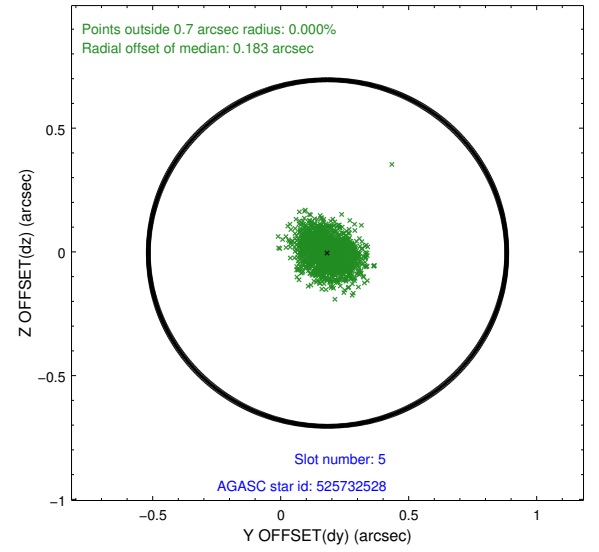
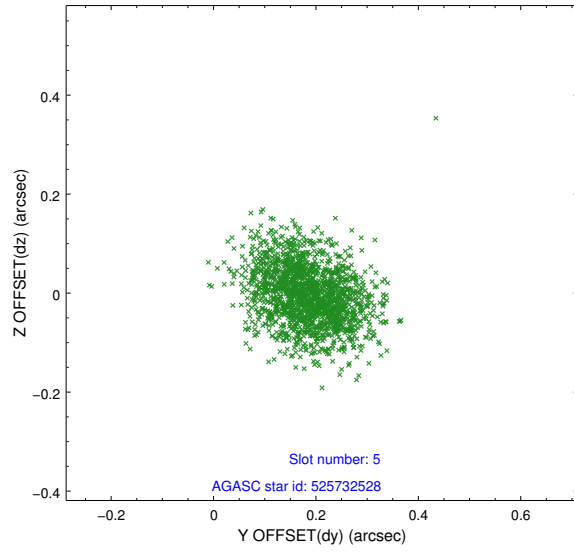
2.4.1 Slot 3



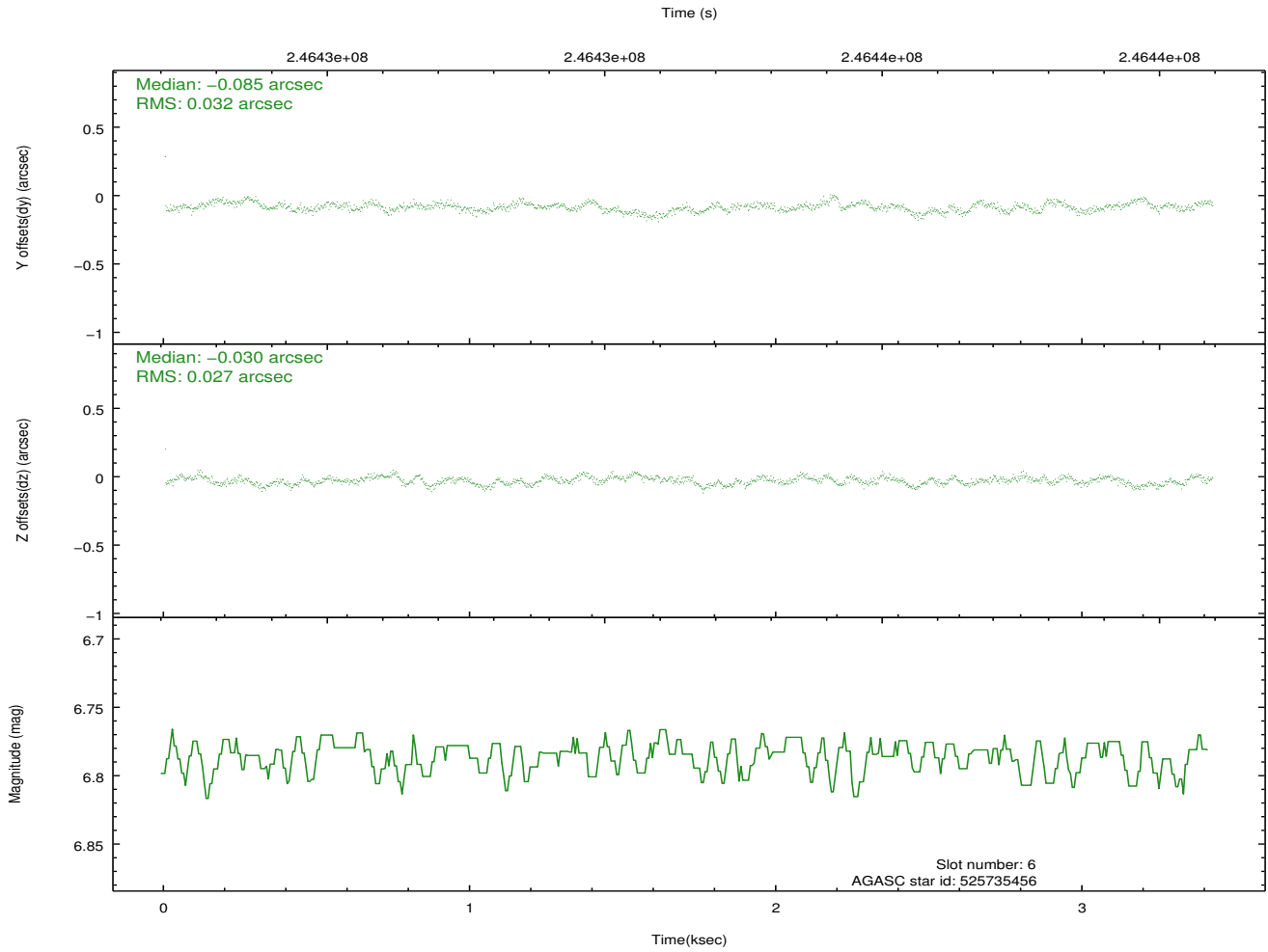
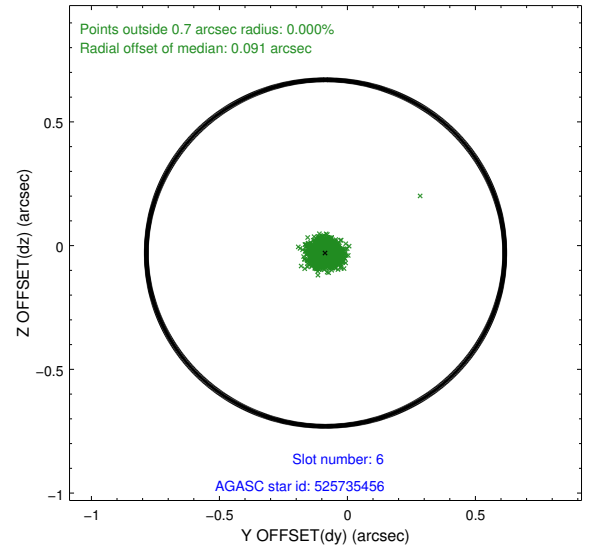
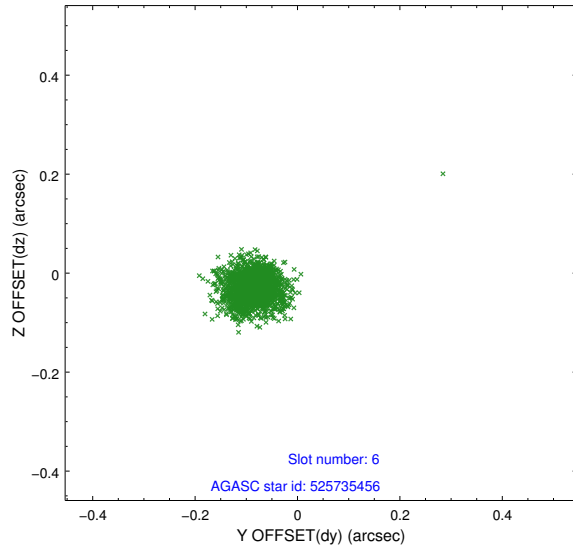
2.4.2 Slot 4



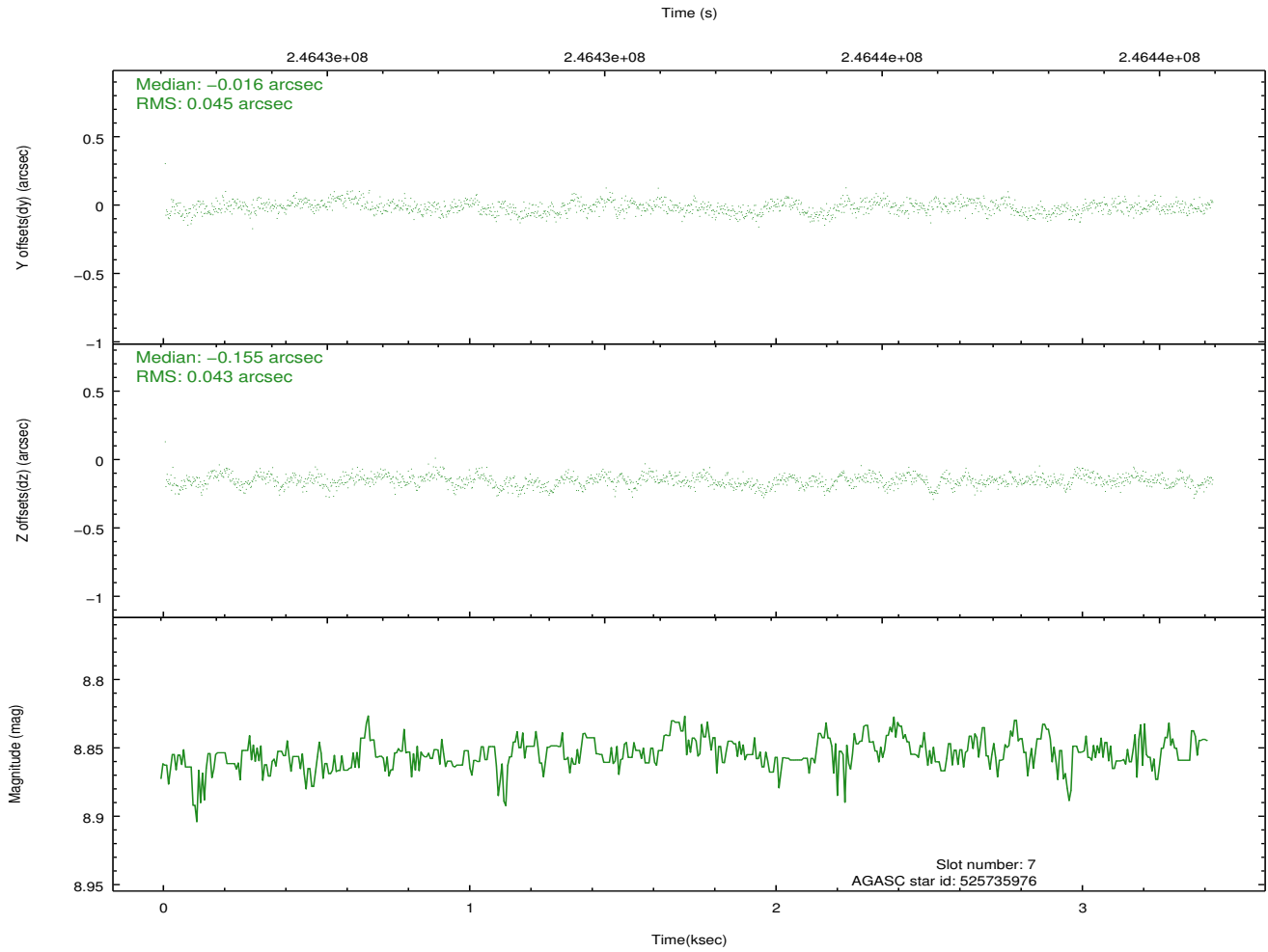
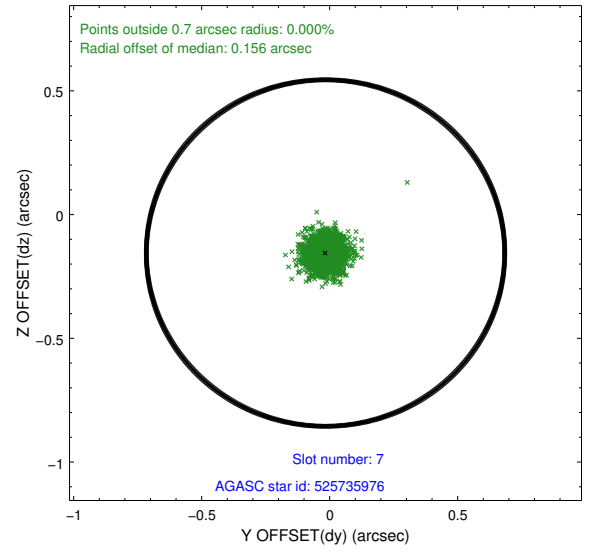
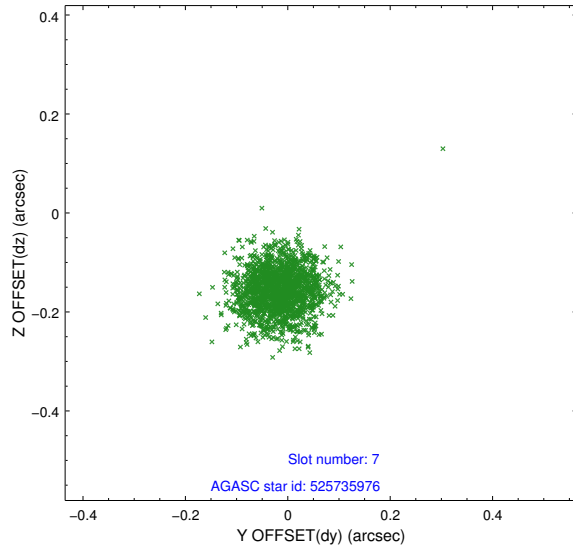
2.4.3 Slot 5



2.4.4 Slot 6

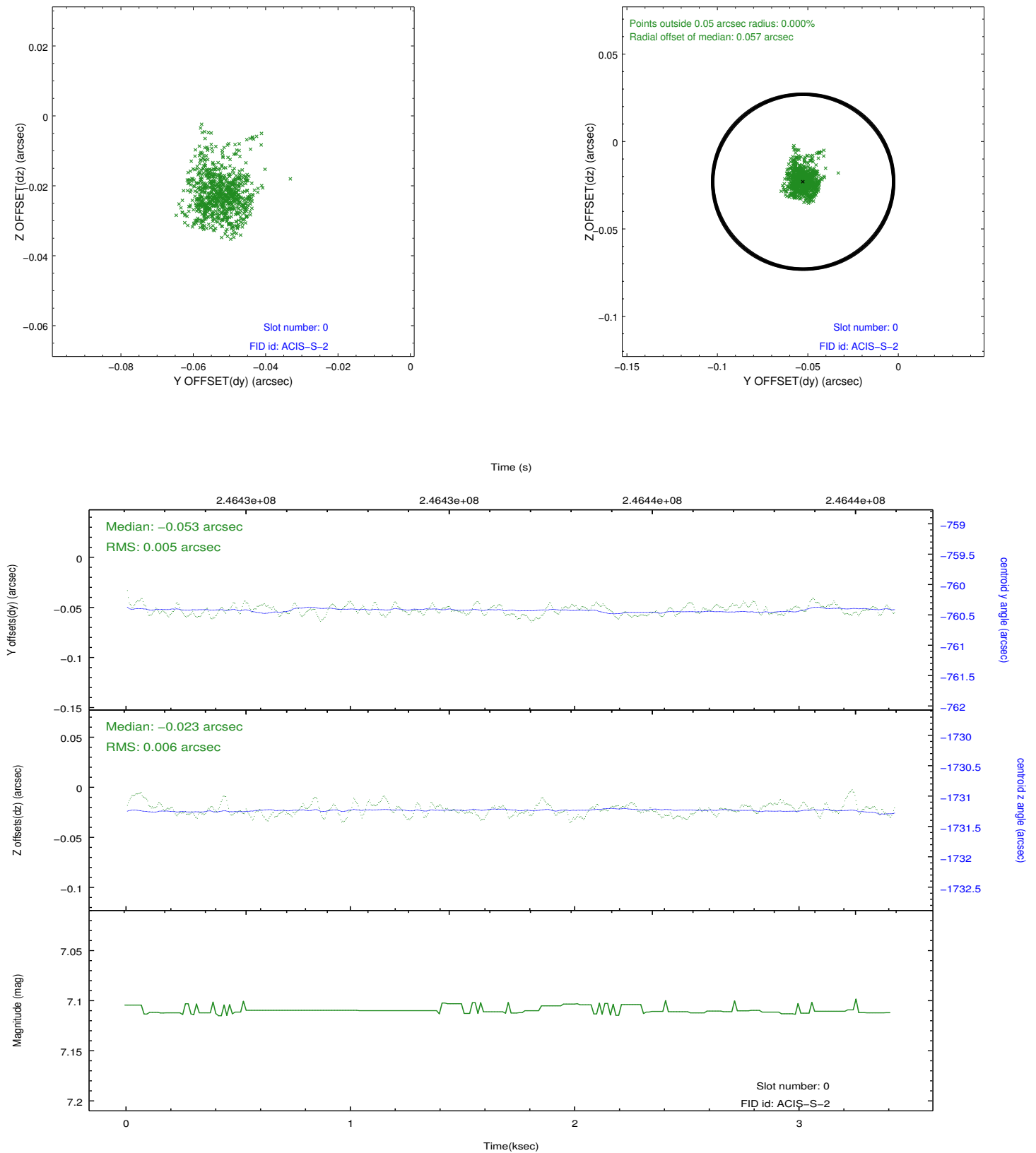


2.4.5 Slot 7

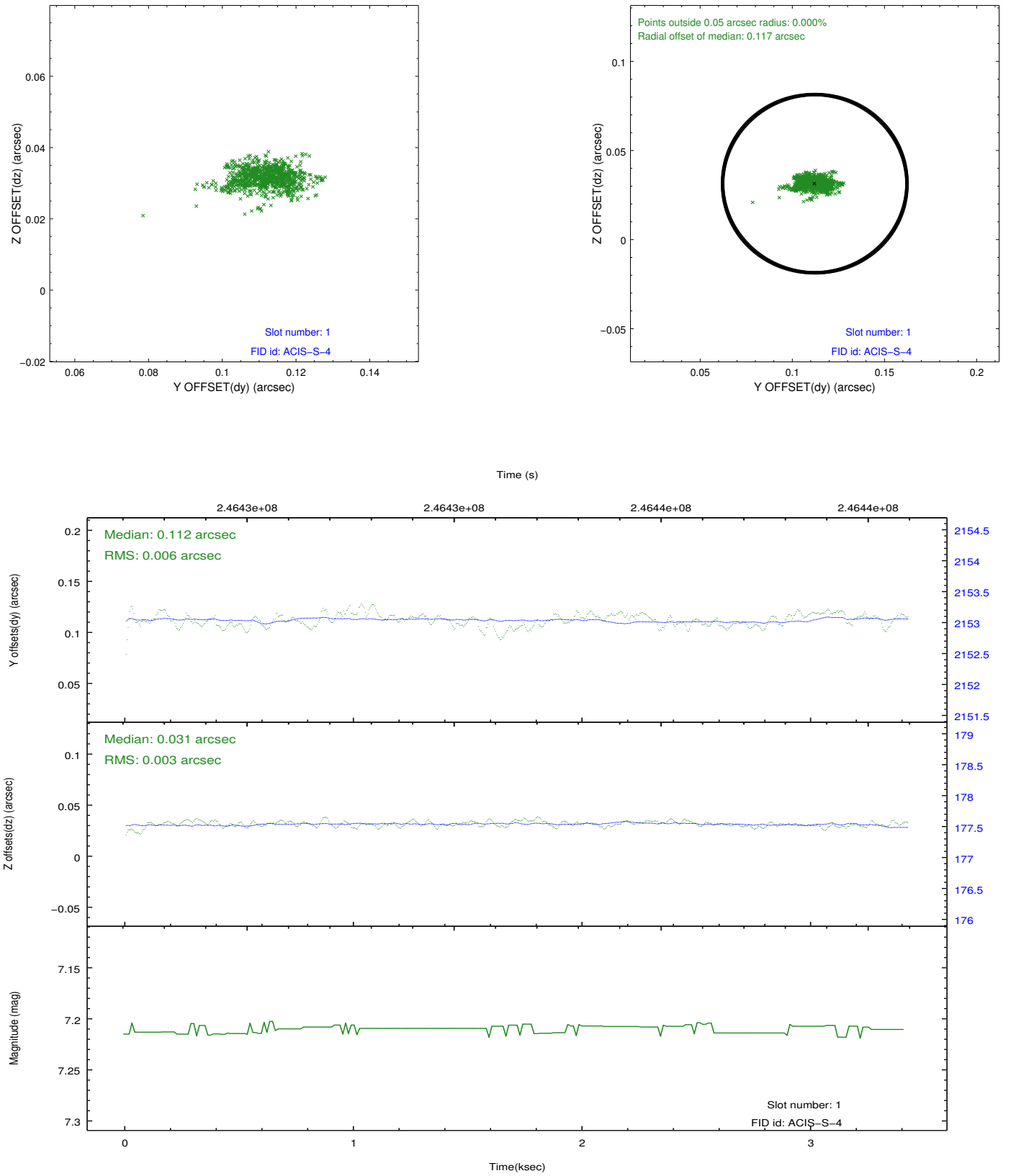


2.5 FID Slots

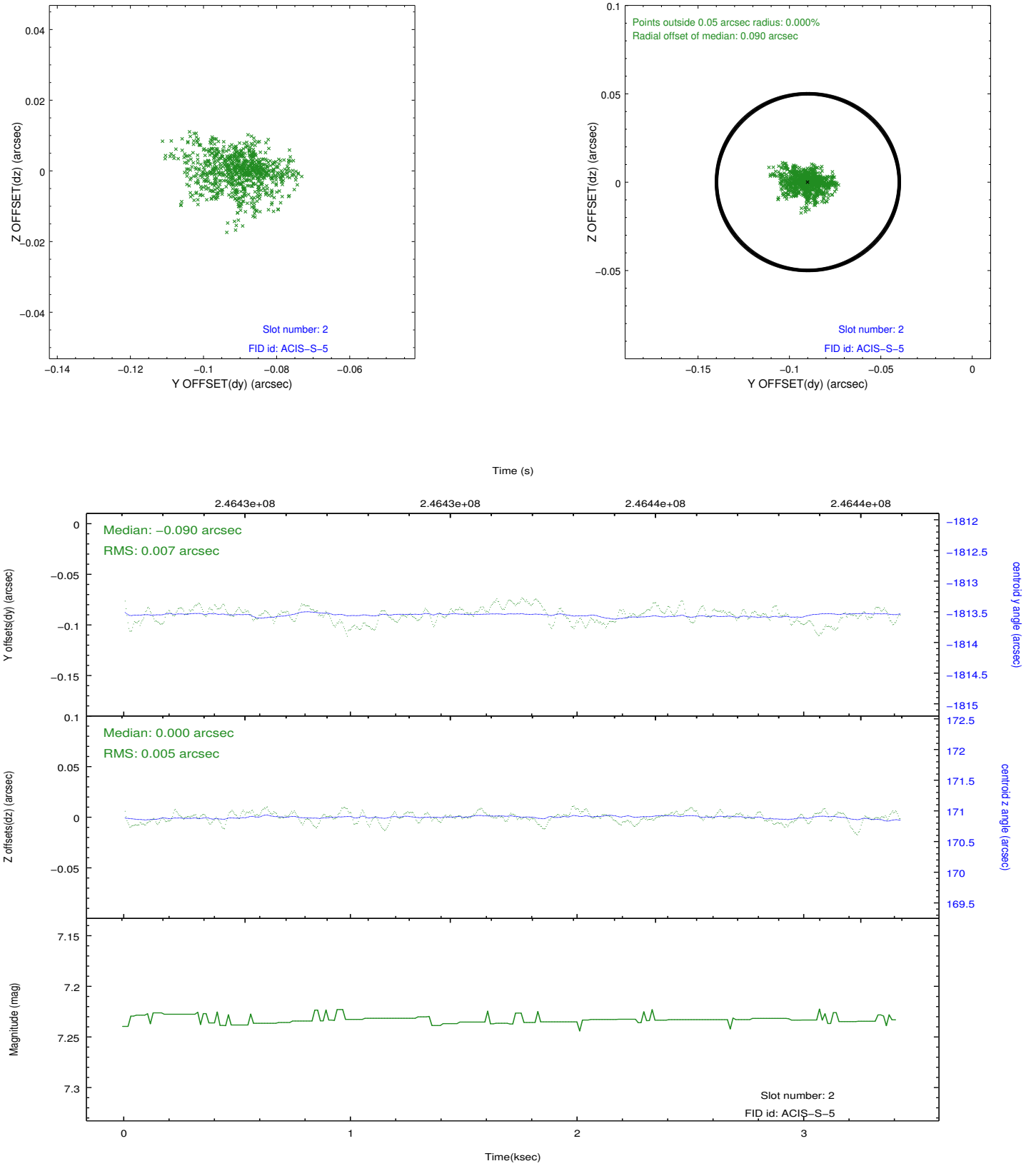
2.5.1 Slot 0



2.5.2 Slot 1



2.5.3 Slot 2



A Summary

A.1 Status

V&V Scientist	Beth Sundheim
V&V Date (YYYY-MM-DD)	2013.01.27
V&V Edition	1
V&V Disposition and Status	OK
V&V Charge Time	1.244316

A.2 Comments

The high count rate resulted in telemetry saturation and a number of dropped exposures. The ONTIME value reflects the lost exposure time. Window preference met.