

# V&V Reference Report

## L2 ASCDS Version : 7.6.7.1

Observation 6080 - L2 Version 002  
Chandra X-Ray Center

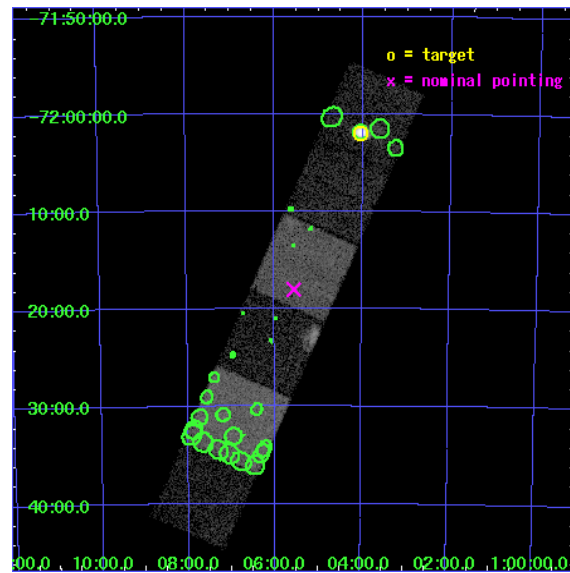
L2 Processing Date : Apr 7 2006

## Contents

<b>1</b>	<b>Front</b>	<b>2</b>
<b>2</b>	<b>OBI</b>	<b>3</b>
2.1	OBI . . . . .	3
2.1.1	Images . . . . .	3
2.1.2	Bias . . . . .	3
2.1.3	Parameters . . . . .	4
2.1.4	Events . . . . .	4
2.2	Compared Parameters . . . . .	5
2.3	Aspect . . . . .	6
2.4	Star Slots . . . . .	9
2.4.1	Slot 3 . . . . .	9
2.4.2	Slot 4 . . . . .	10
2.4.3	Slot 5 . . . . .	11
2.4.4	Slot 6 . . . . .	12
2.4.5	Slot 7 . . . . .	13
2.5	FID Slots . . . . .	14
2.5.1	Slot 0 . . . . .	14
2.5.2	Slot 1 . . . . .	15
2.5.3	Slot 2 . . . . .	16
<b>3</b>	<b>Point Sources</b>	<b>17</b>
<b>A</b>	<b>Summary</b>	<b>18</b>
A.1	Status . . . . .	18
A.2	Comments . . . . .	18

# 1 Front

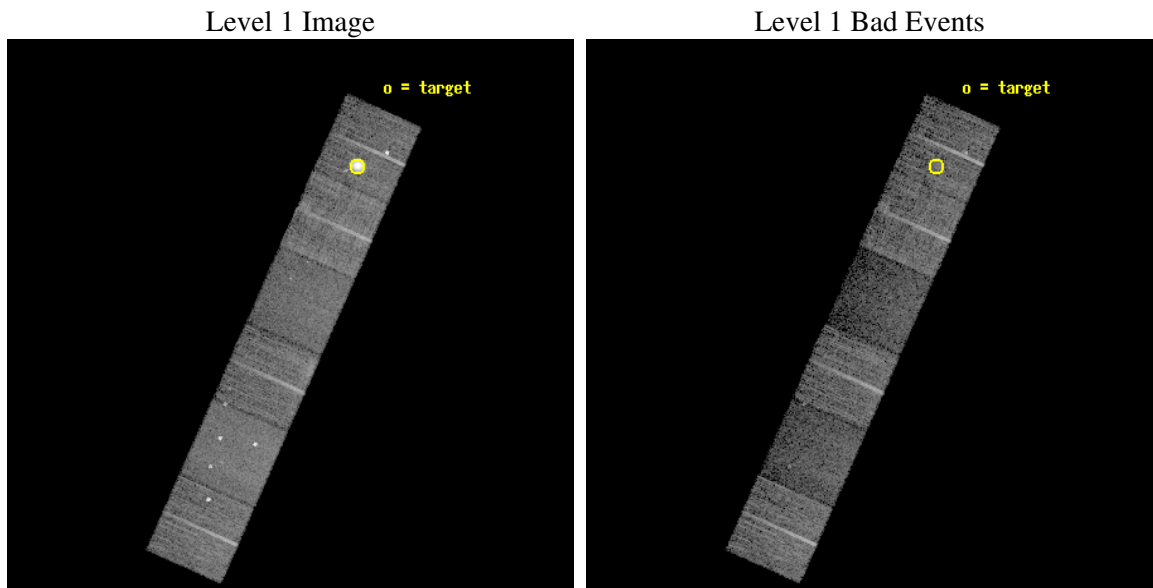
seq_num	590407
obs_id	6080
title	AO6A ACIS-S Calibration Observations of E0102-72
observer	Dr. CXC Calibration
object	E0102-72[S5,-120,-17.29,0,0]
dtcycle	0
cycle	P
ra_targ	16.01
dec_targ	-72.032028
ra_nom	16.387903975212
dec_nom	-72.300291559271
roll_nom	293.99159450736
revision	2
ontime	7753.5999711156
livetime	7655.4192196239
ontime4	7753.5999711156
ontime5	7753.5999711156
ontime6	7753.5999711156
ontime7	7753.5999711156
ontime8	7750.3590008318
ontime9	7753.5999711156
l2events	85366



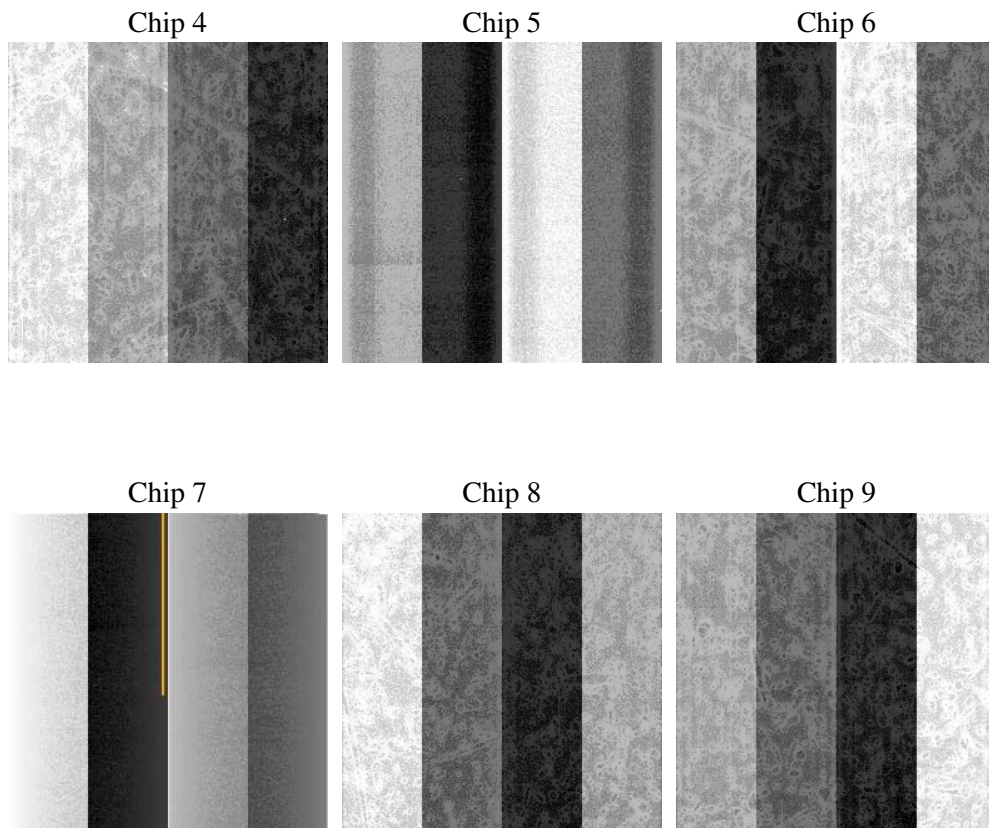
## 2 OBI

### 2.1 OBI

#### 2.1.1 Images



#### 2.1.2 Bias



### 2.1.3 Parameters

obi_num	1
ascdsver	7.6.7.1
caldsver	3.2.1
date	2006-04-07T07:58:58
revision	2

sched_exp_time	8000.000000
ontime	7758.9576197267
ontime4	7758.9576396048
ontime5	7758.9576396048
ontime6	7758.9576396048
ontime7	7758.9576396048
ontime8	7755.7166693211
ontime9	7758.9576197267
l1events	344333

### 2.1.4 Events

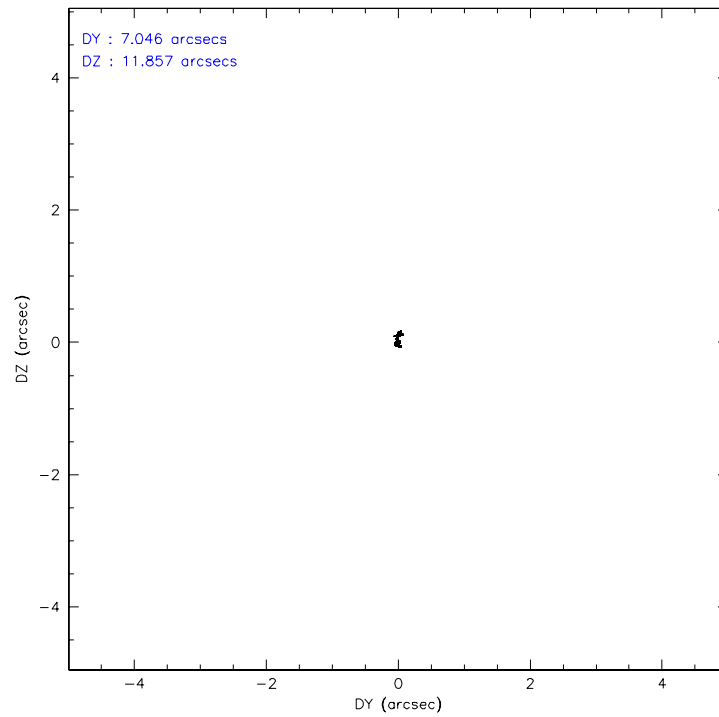
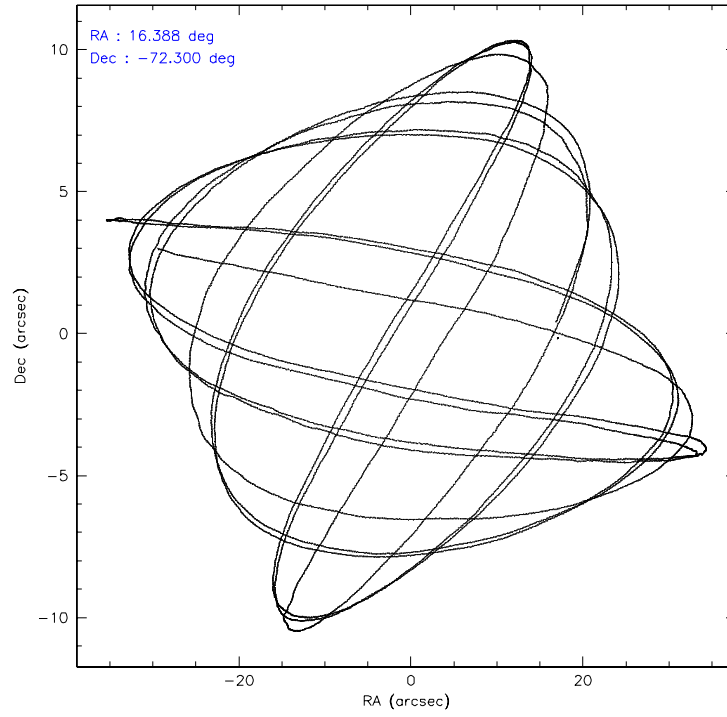
	ccd 4	ccd 5	ccd 6	ccd 7	ccd 8	ccd 9
level 1 events	56747	60454	51035	45160	61904	69033
rejected events	50147	28350	44616	24122	47481	41955
rejected %	88%	46%	87%	53%	76%	60%

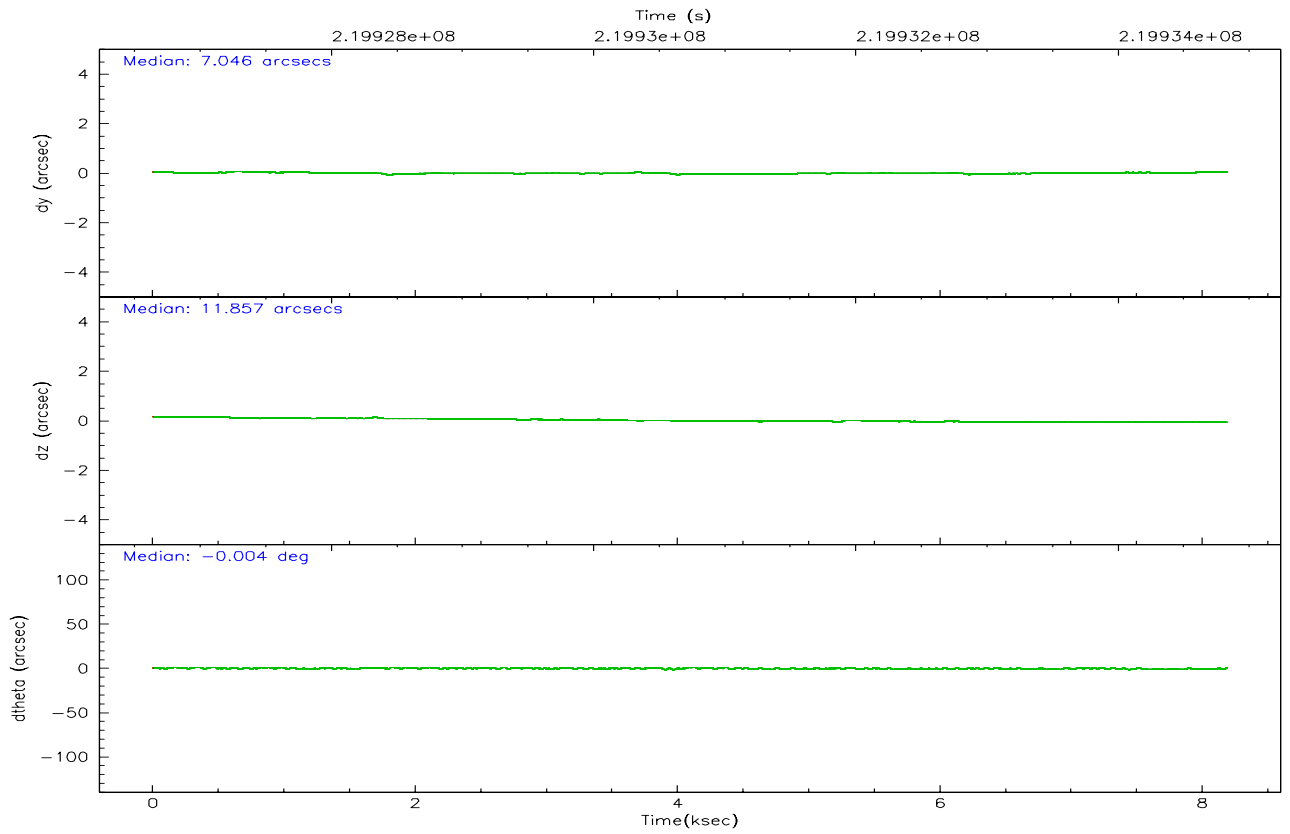
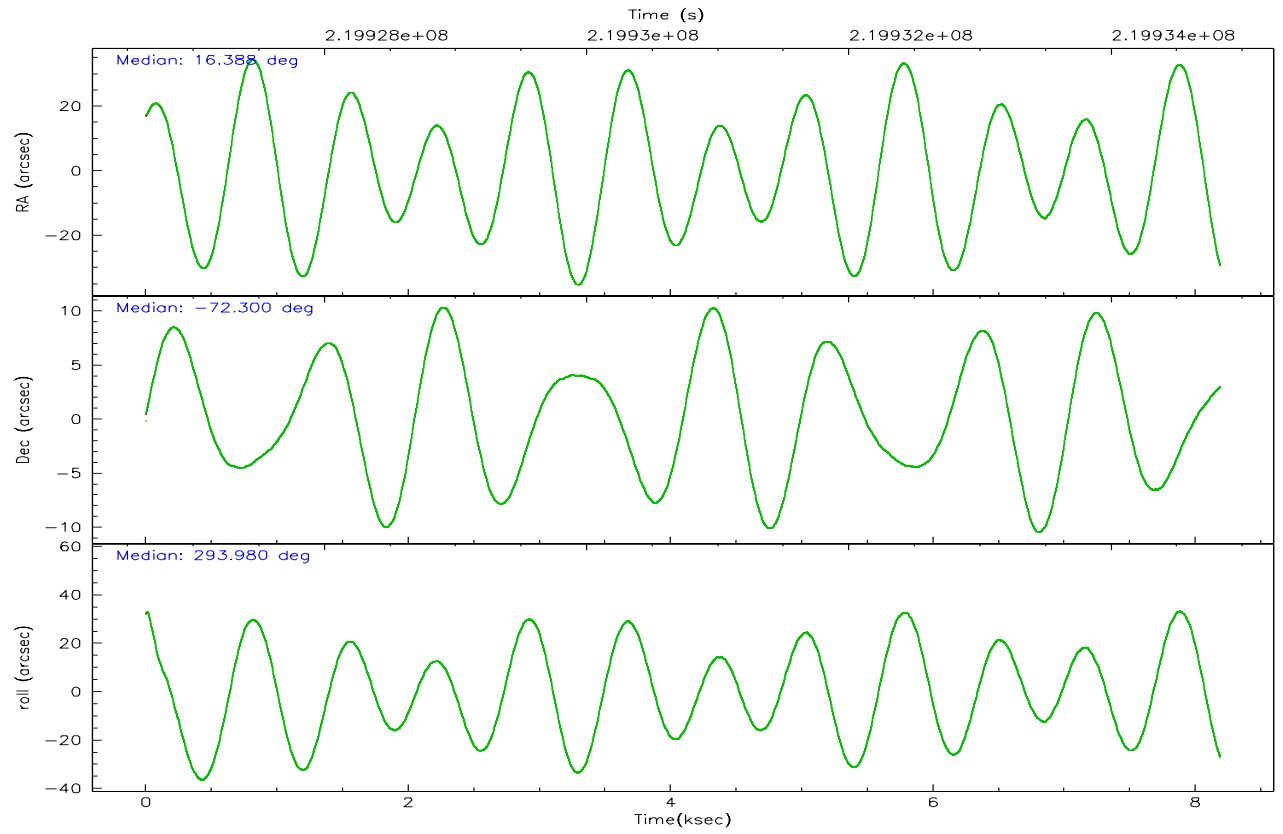
	ccd 4	ccd 5	ccd 6	ccd 7	ccd 8	ccd 9
grade 0 events	3540	5122	3145	1537	4342	19723
	6%	8%	6%	3%	7%	28%
grade 1 events	65	164	29	30	42	377
	0%	0%	0%	0%	0%	0%
grade 2 events	1164	9330	1171	5498	3052	4657
	2%	15%	2%	12%	4%	6%
grade 3 events	577	821	547	1341	1671	831
	1%	1%	1%	2%	2%	1%
grade 4 events	520	836	602	1307	1495	782
	0%	1%	1%	2%	2%	1%
grade 5 events	1545	3254	1665	3491	2383	1847
	2%	5%	3%	7%	3%	2%
grade 6 events	804	16008	956	11361	3867	1097
	1%	26%	1%	25%	6%	1%
grade 7 events	48532	24919	42920	20595	45052	39719
	85%	41%	84%	45%	72%	57%

## 2.2 Compared Parameters

Parameter	Planned	Actual	Parameter	Planned	Actual
Instrument	ACIS	ACIS	Obspar format version number	6	6
Detector	ACIS-456789	ACIS-456789	Obspar file type	PREDICTED	ACTUAL
Grating	NONE	NONE	Obspar update status	NONE	UPDATED
Data mode	VFAINT	VFAINT	On-chip summing requested	N	N
Observation mode	POINTING	POINTING	Subarray requested	NONE	NONE
Pointing RA	16.314719	16.38790397521171	Alternating exposures requested	N	N
Pointing Dec	-72.284628	-72.30029155927095	Primary exposure time	0.000000	3.2
Pointing Roll	293.765212	293.9915945073644			
Window start time	215654464.184000	215654464.184000			
Window stop time	220838464.184000	220838464.184000			
SIM focus pos (mm)	-0.684267	-0.6828225247311905			
SIM defocus (mm)	0	0.001444936568705701			
SIM translation stage pos (mm)	-190.132523	-190.1425803651734			
SIM translation stage offset (mm)	0	0.01005778216563158			
Observation start time	219926830.184000	219926454.15453			
Observation start date	2004-12-20T10:46:06	2004-12-20T10:40:54			
Observation end time	219934830.184000	219935676.59244			
Observation end date	2004-12-20T12:59:26	2004-12-20T13:14:36			
Read mode	TIMED	TIMED			

## 2.3 Aspect





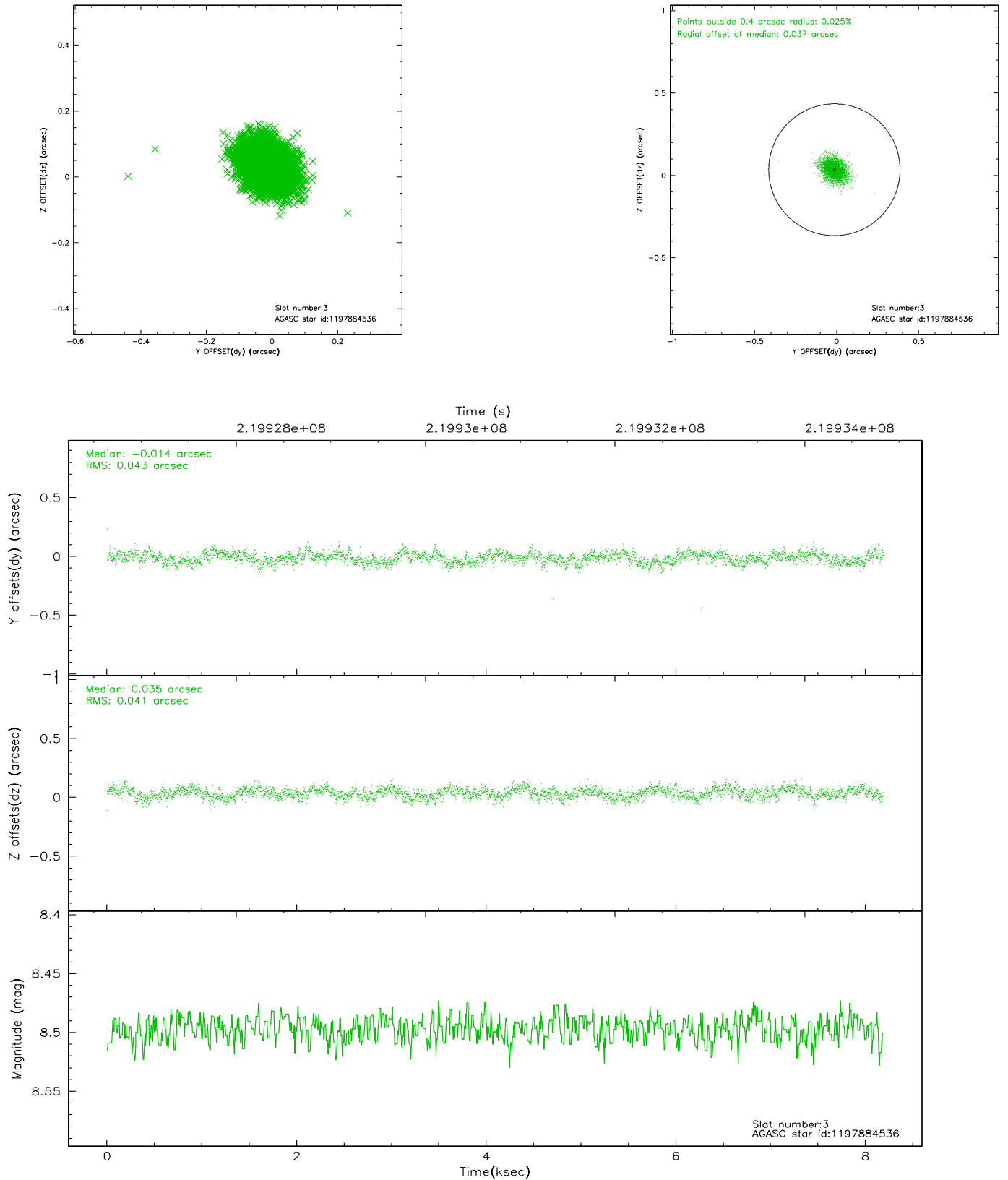
### Slot Statistics

slot	status	id	mag	n_pts	med_dy	med_dz	dr1	dr2	ra	dec	mean_y	mean_z
0	FID	ACIS-S-2	7.10	1998	-0.014	0.005	0.007	0.012	0.000000	0.000000	-759.81	-1733.12
1	FID	ACIS-S-4	7.20	1998	0.019	0.006	0.005	0.009	0.000000	0.000000	2153.19	174.66
2	FID	ACIS-S-5	7.23	1998	-0.036	-0.002	0.007	0.011	0.000000	0.000000	-1811.80	169.10
3	GUIDE	1197884536	8.50	3995	-0.014	0.035	0.062	0.102	17.160729	-71.835289	-1091.74	1518.06
4	GUIDE	1197884712	8.32	3993	0.108	0.085	0.078	0.124	16.087398	-72.252690	-205.09	-181.64
5	GUIDE	1197885104	9.35	3982	0.046	-0.008	0.098	0.153	17.845067	-72.189368	384.99	1671.43
6	GUIDE	1197885328	7.23	3995	-0.059	-0.105	0.049	0.078	16.283090	-71.733943	-1828.54	766.87
7	GUIDE	1198189696	7.37	3993	-0.085	-0.000	0.062	0.098	15.223750	-72.697522	899.59	-1671.79

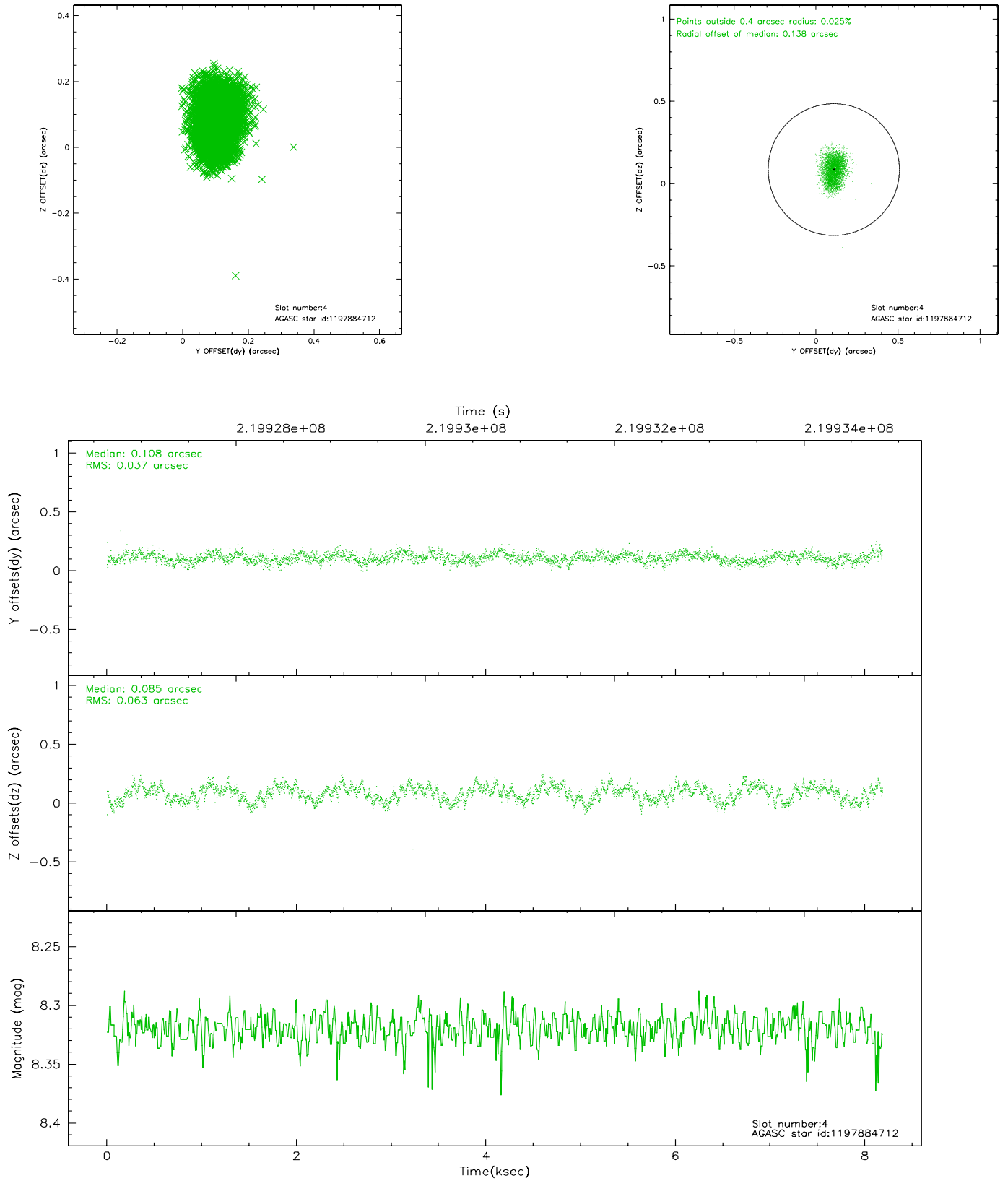


## 2.4 Star Slots

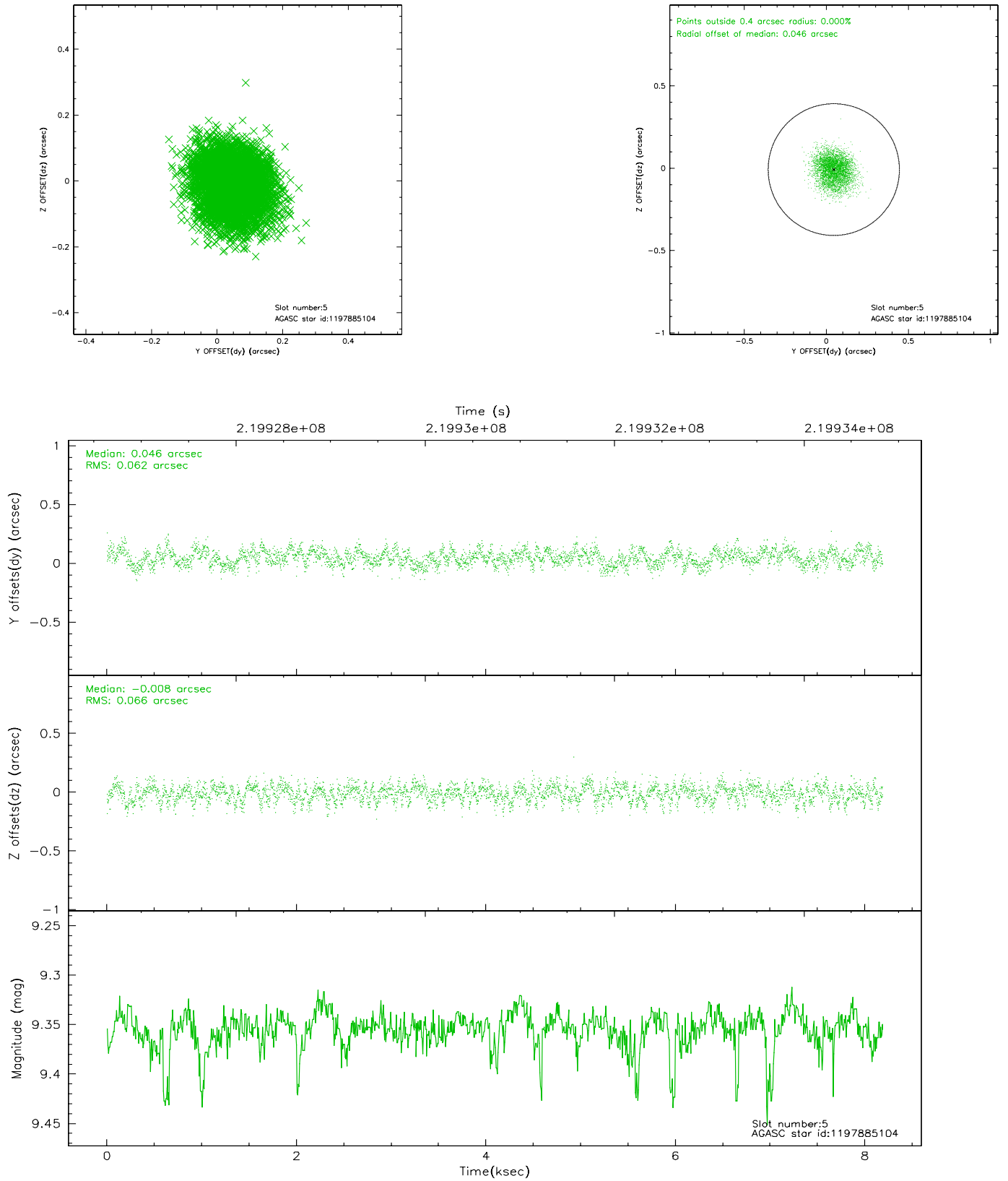
### 2.4.1 Slot 3



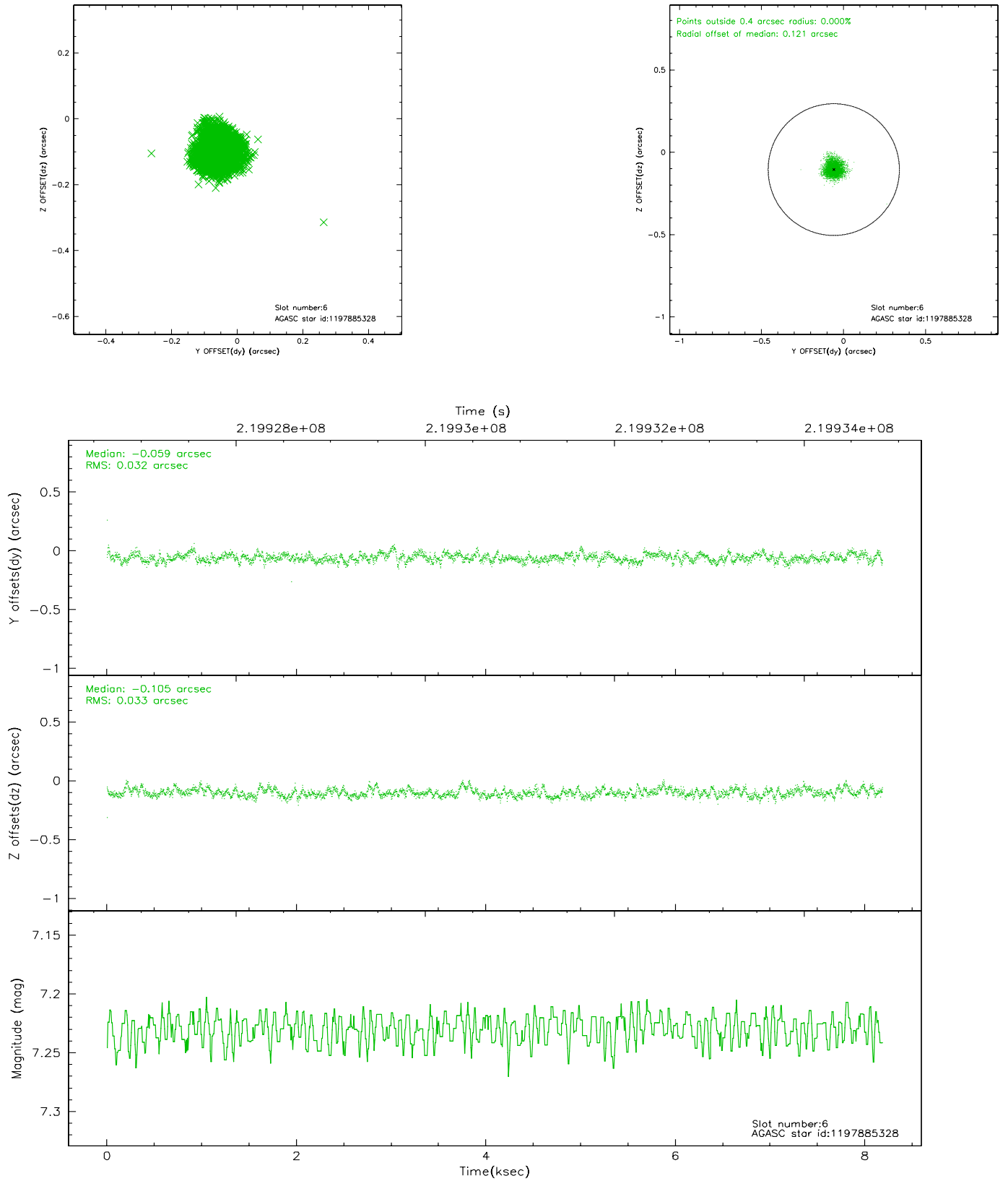
## 2.4.2 Slot 4



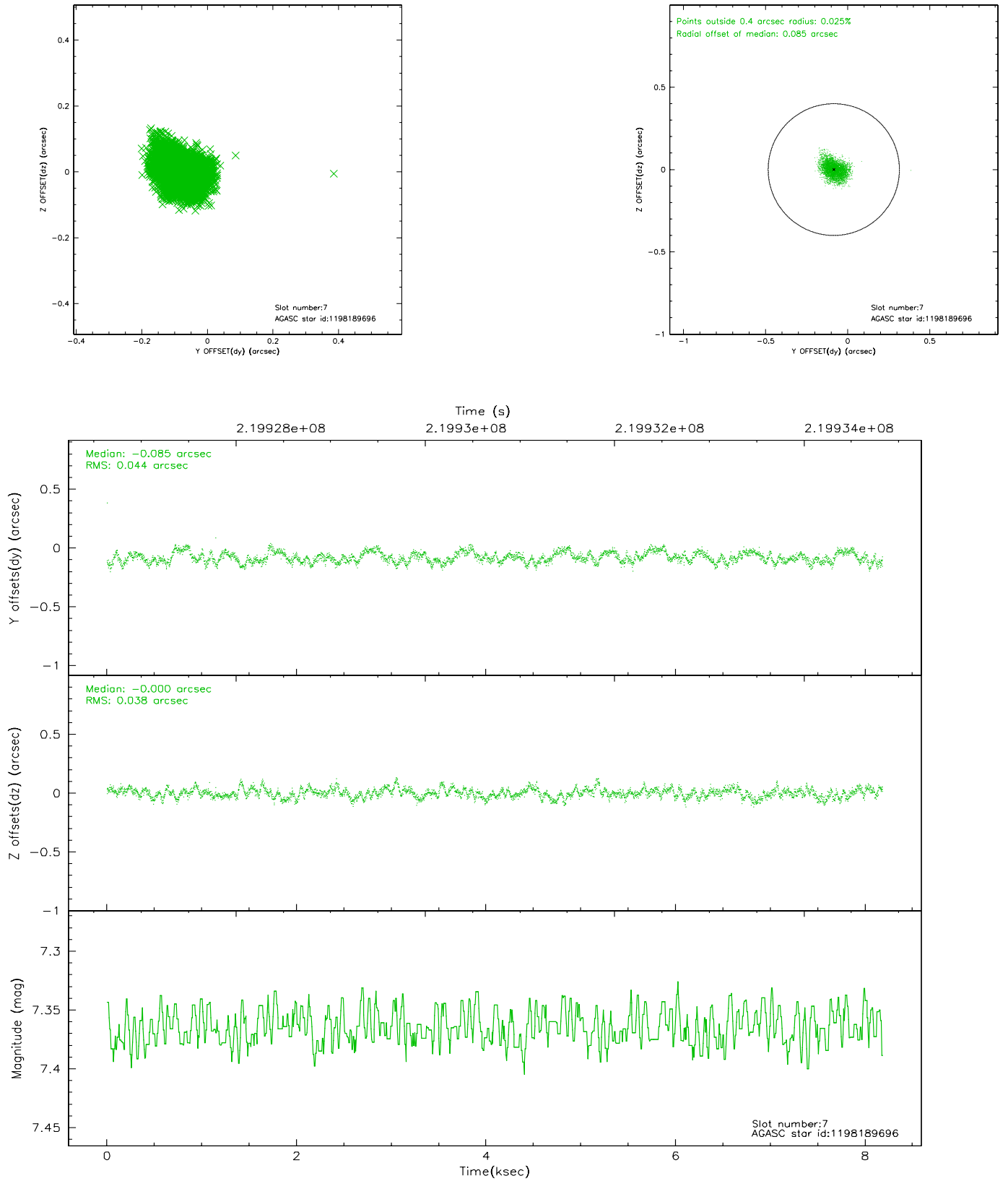
### 2.4.3 Slot 5



## 2.4.4 Slot 6

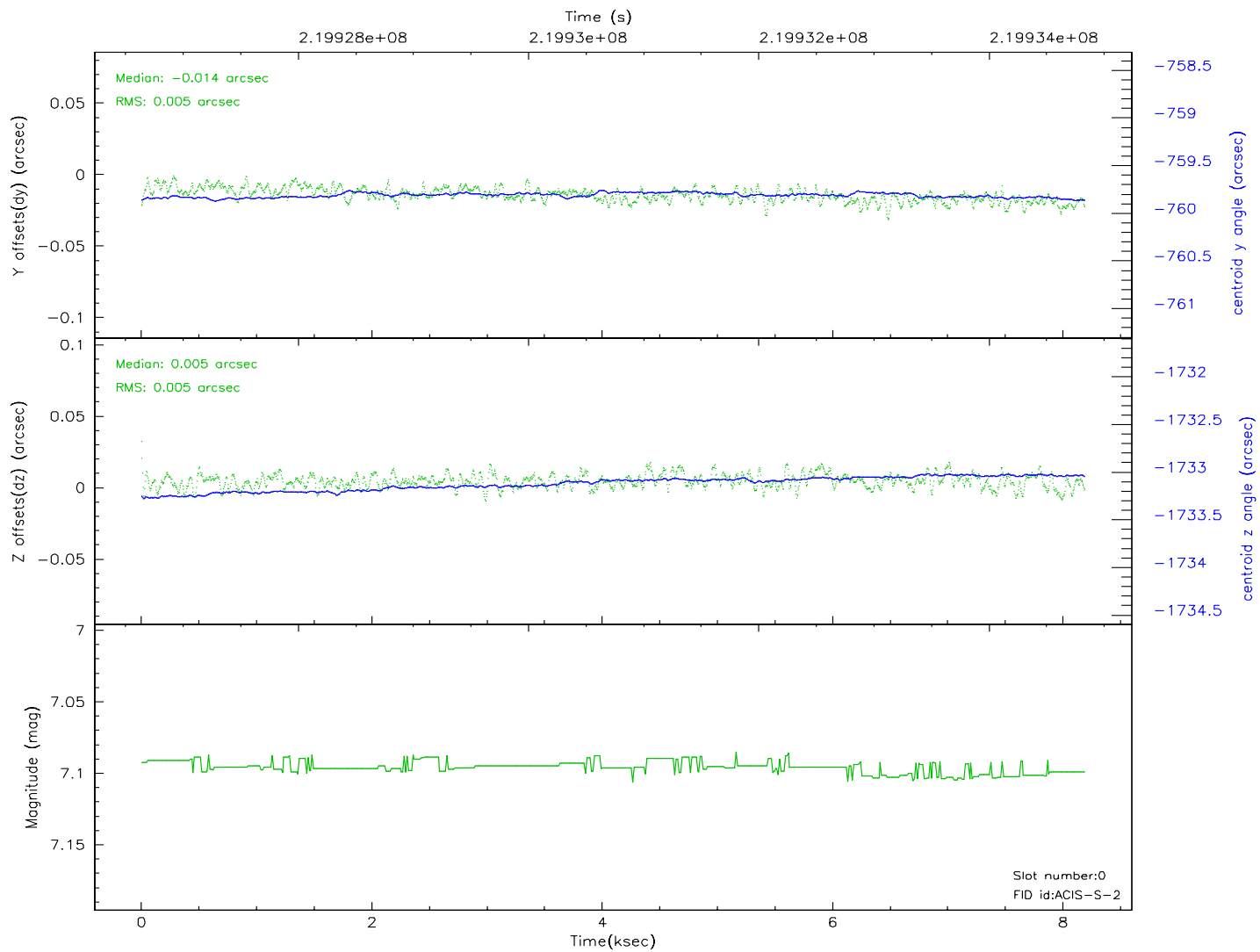
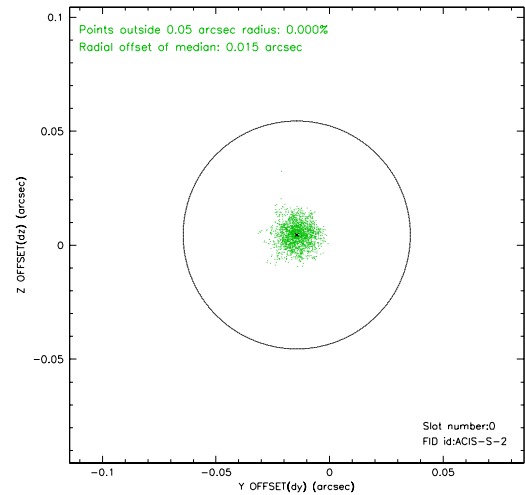
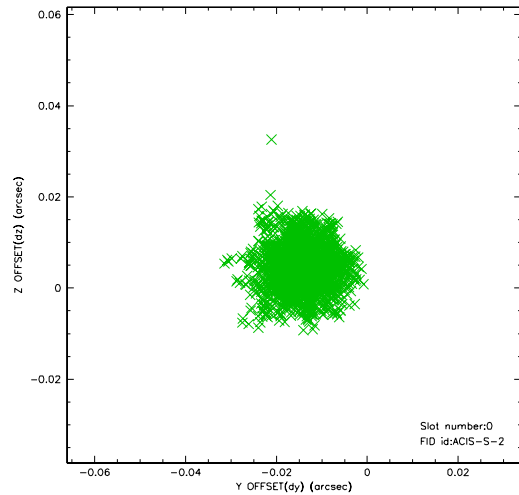


## 2.4.5 Slot 7

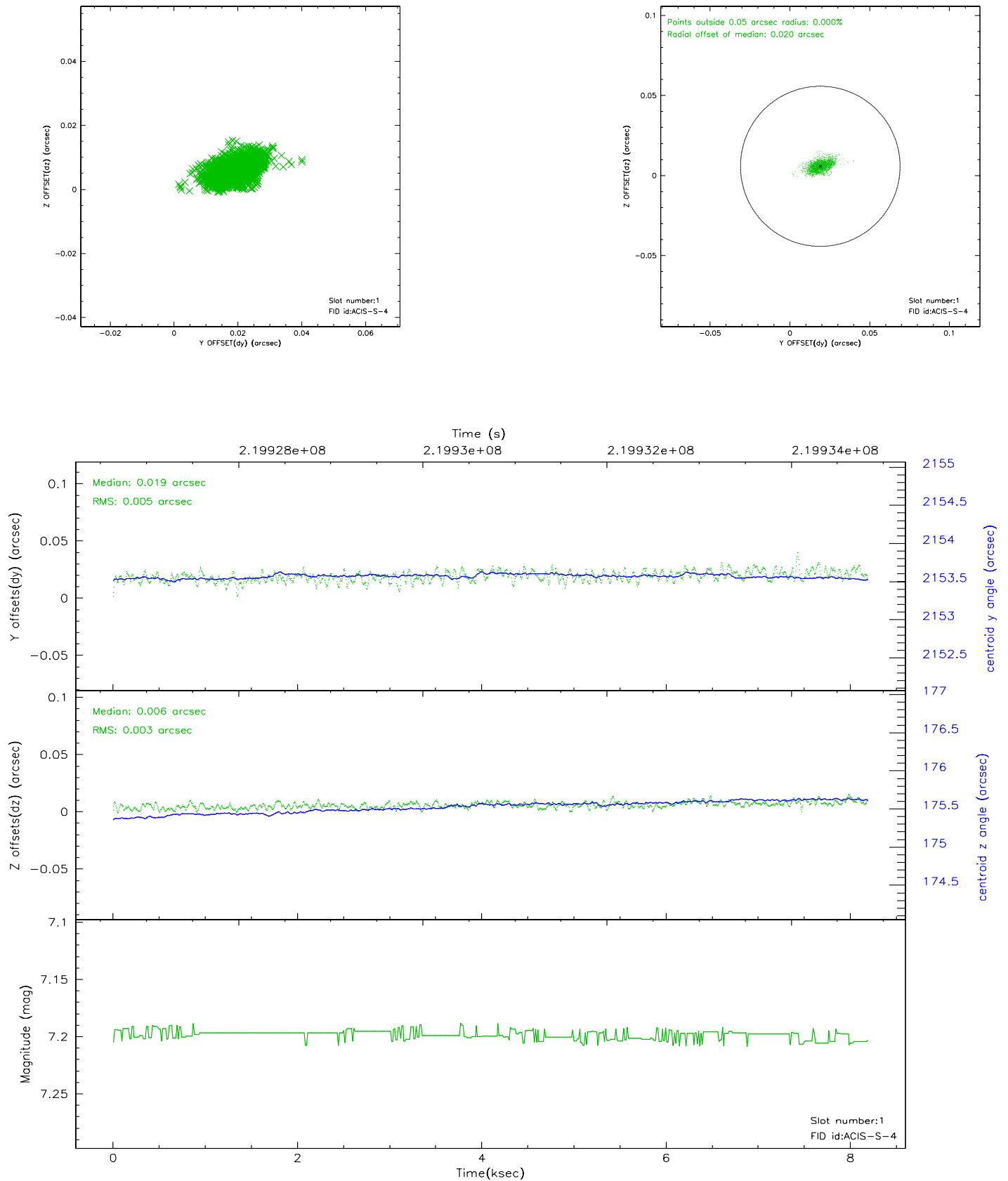


## 2.5 FID Slots

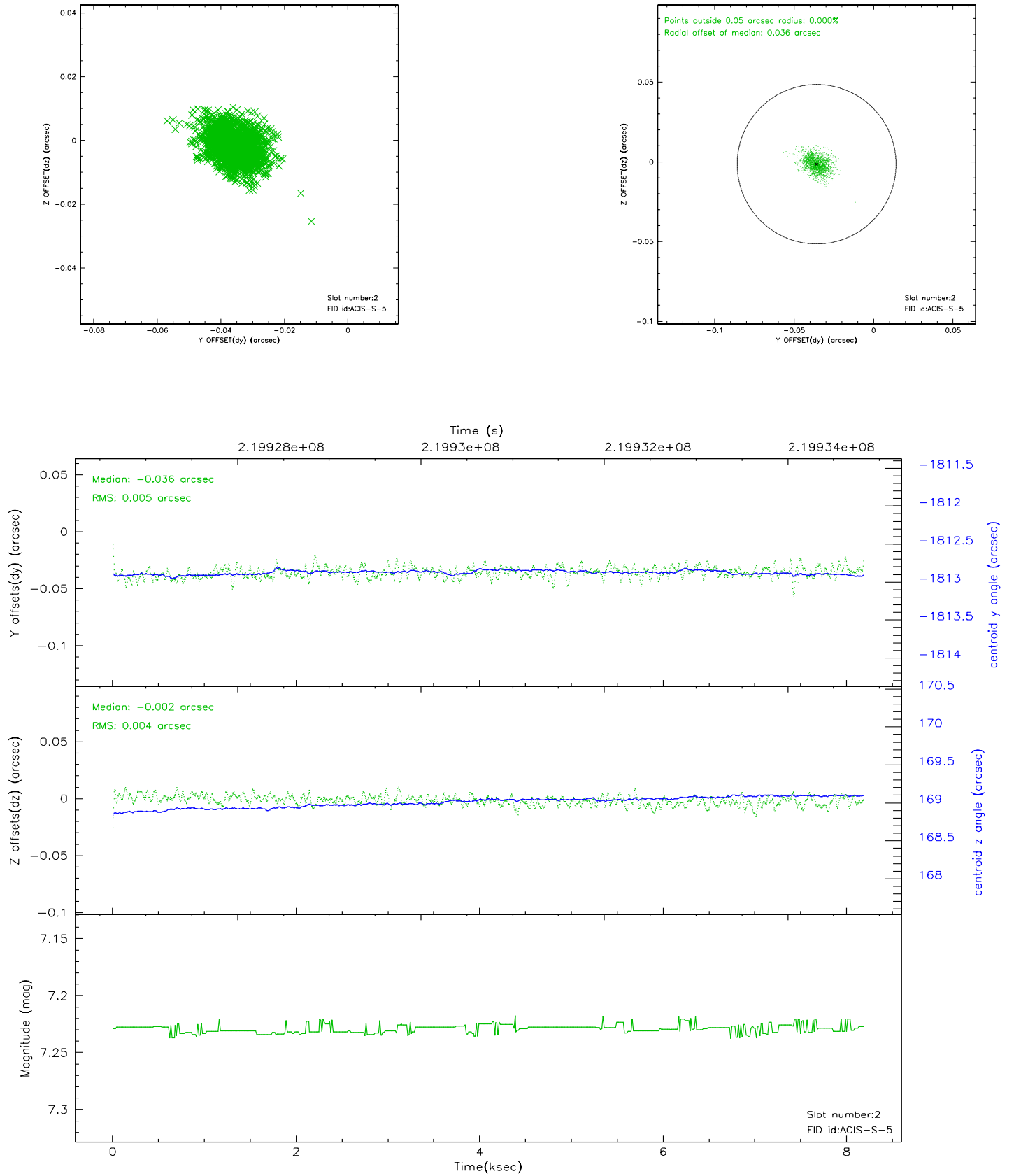
### 2.5.1 Slot 0



## 2.5.2 Slot 1

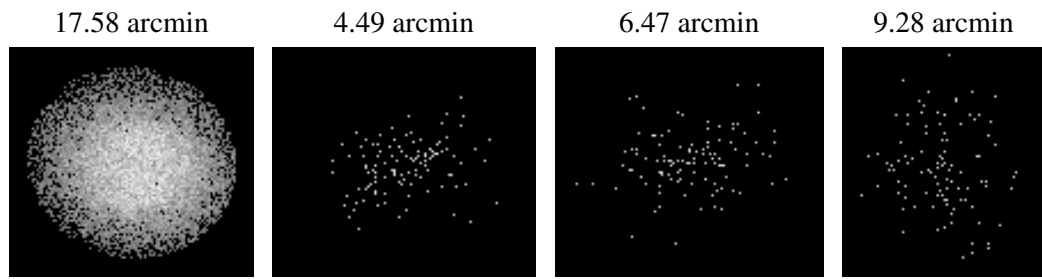


### 2.5.3 Slot 2





### 3 Point Sources



## A Summary

### A.1 Status

V&V Scientist	Beth Sundheim
V&V Date (YYYY-MM-DD)	2006.04.07
V&V Edition	1
V&V Disposition and Status	OK
V&V Charge Time	7.753599

### A.2 Comments

Window constraint satisfied.