

V&V Reference Report

L2 ASCDS Version : 7.6.7.1

Observation 6075 - L2 Version 002
Chandra X-Ray Center

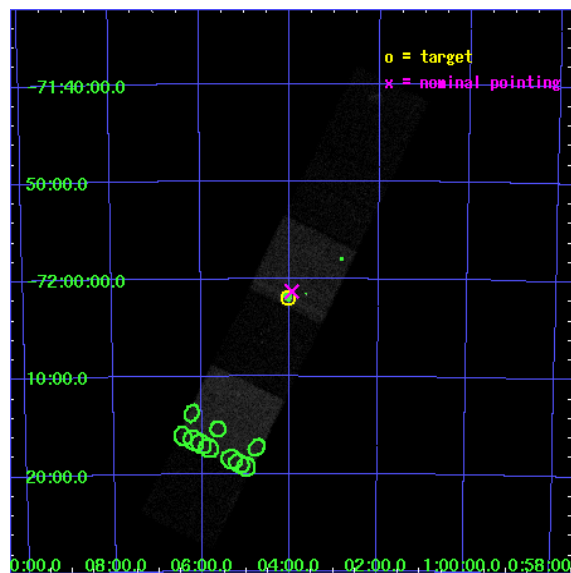
L2 Processing Date : Apr 8 2006

Contents

1	Front	2
2	OBI	3
2.1	OBI	3
2.1.1	Images	3
2.1.2	Bias	3
2.1.3	Parameters	4
2.1.4	Events	4
2.2	Compared Parameters	5
2.3	Aspect	6
2.4	Star Slots	9
2.4.1	Slot 3	9
2.4.2	Slot 4	10
2.4.3	Slot 5	11
2.4.4	Slot 6	12
2.4.5	Slot 7	13
2.5	FID Slots	14
2.5.1	Slot 0	14
2.5.2	Slot 1	15
2.5.3	Slot 2	16
3	Point Sources	17
A	Summary	18
A.1	Status	18
A.2	Comments	18

1 Front

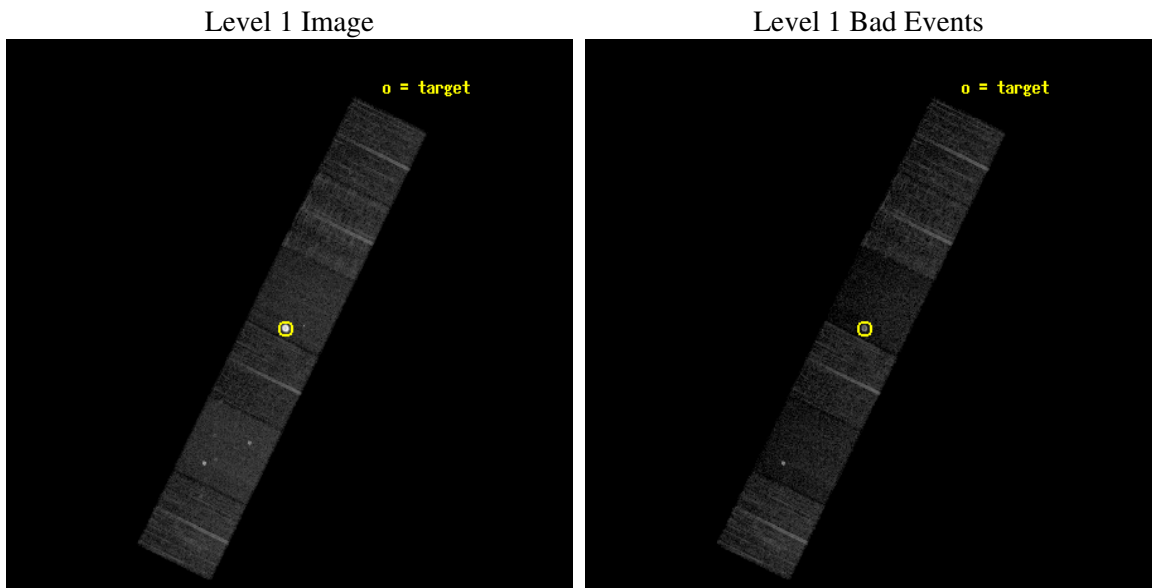
seq_num	590402
obs_id	6075
title	AO6A ACIS-S Calibration Observations of E0102-72
observer	Dr. CXC Calibration
object	E0102-72[S3,-120,-1,0,0]
dtcycle	0
cycle	P
ra_targ	16.01
dec_targ	-72.032028
ra_nom	15.9871438281
dec_nom	-72.021410706924
roll_nom	296.11211336691
revision	2
ontime	7955.1999703646
livetime	7854.4664382935
ontime4	7955.1999703646
ontime5	7955.1999703646
ontime6	7955.1999703646
ontime7	7955.1999703646
ontime8	7955.1999703646
ontime9	7955.1999703646
l2events	121070



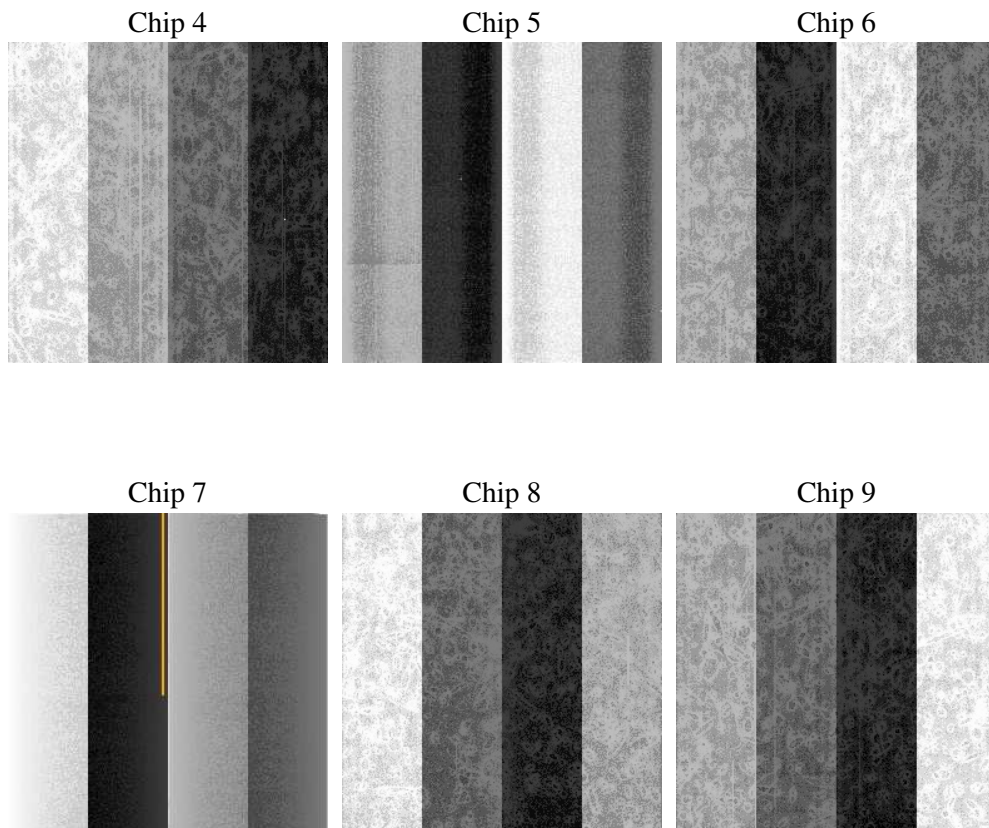
2 OBI

2.1 OBI

2.1.1 Images



2.1.2 Bias



2.1.3 Parameters

obi_num	1
ascdsver	7.6.7.1
caldbver	3.2.1
date	2006-04-08T10:44:38
revision	2

sched_exp_time	8000.000000
ontime	7959.8994987607
ontime4	7959.8994987607
ontime5	7959.8995186388
ontime6	7959.8994987607
ontime7	7959.8994987607
ontime8	7959.8994987607
ontime9	7959.8994987607
l1events	378746

2.1.4 Events

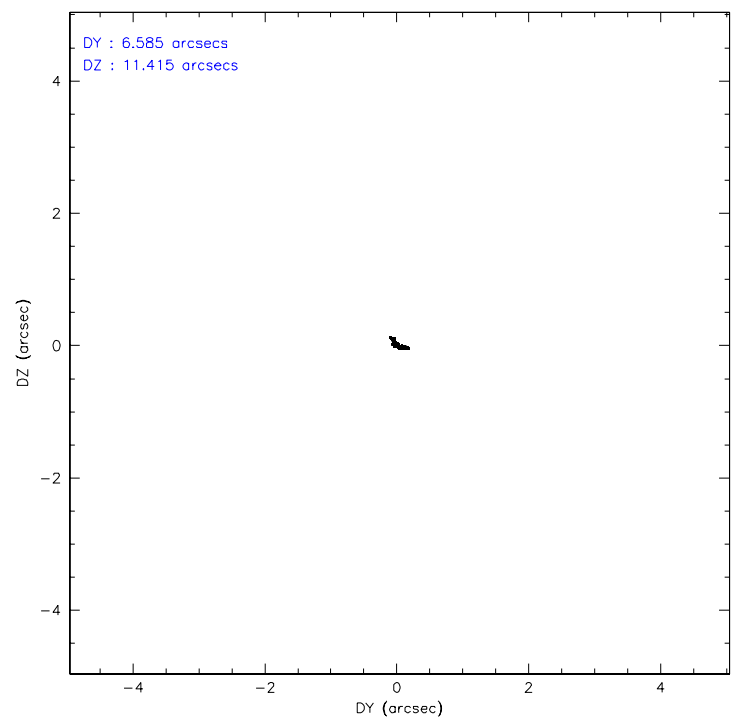
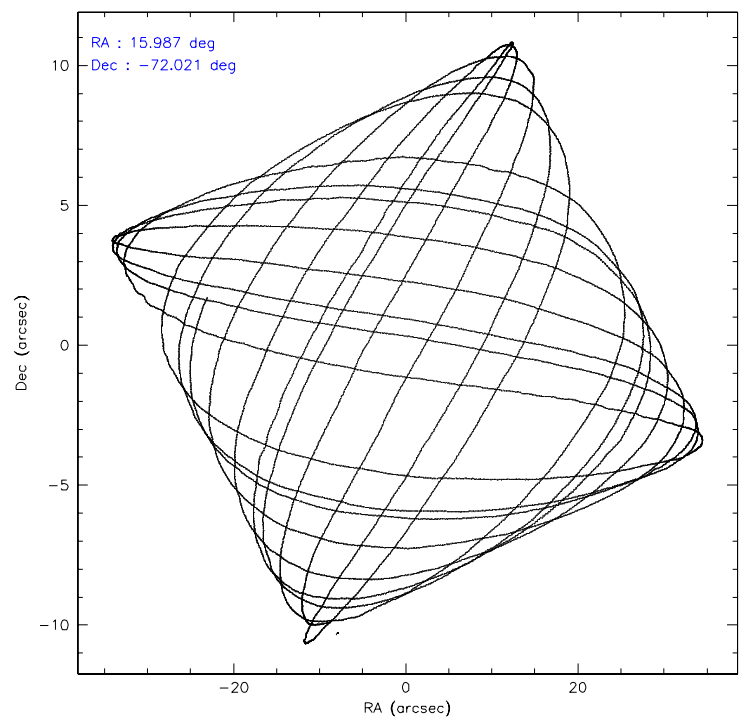
	ccd 4	ccd 5	ccd 6	ccd 7	ccd 8	ccd 9
level 1 events	58734	61240	49858	101746	60240	46928
rejected events	53431	29611	44374	26368	46850	41960
rejected %	90%	48%	89%	25%	77%	89%

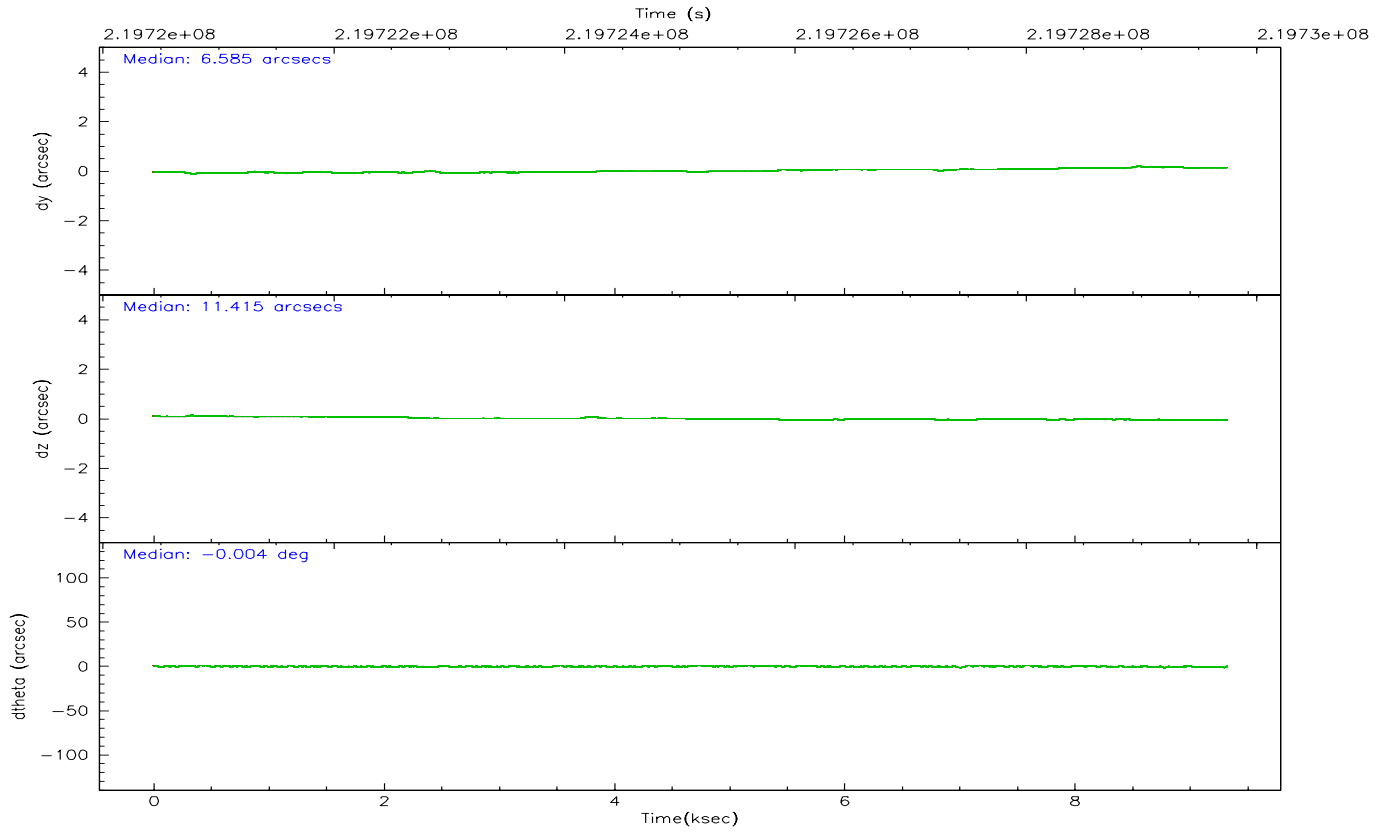
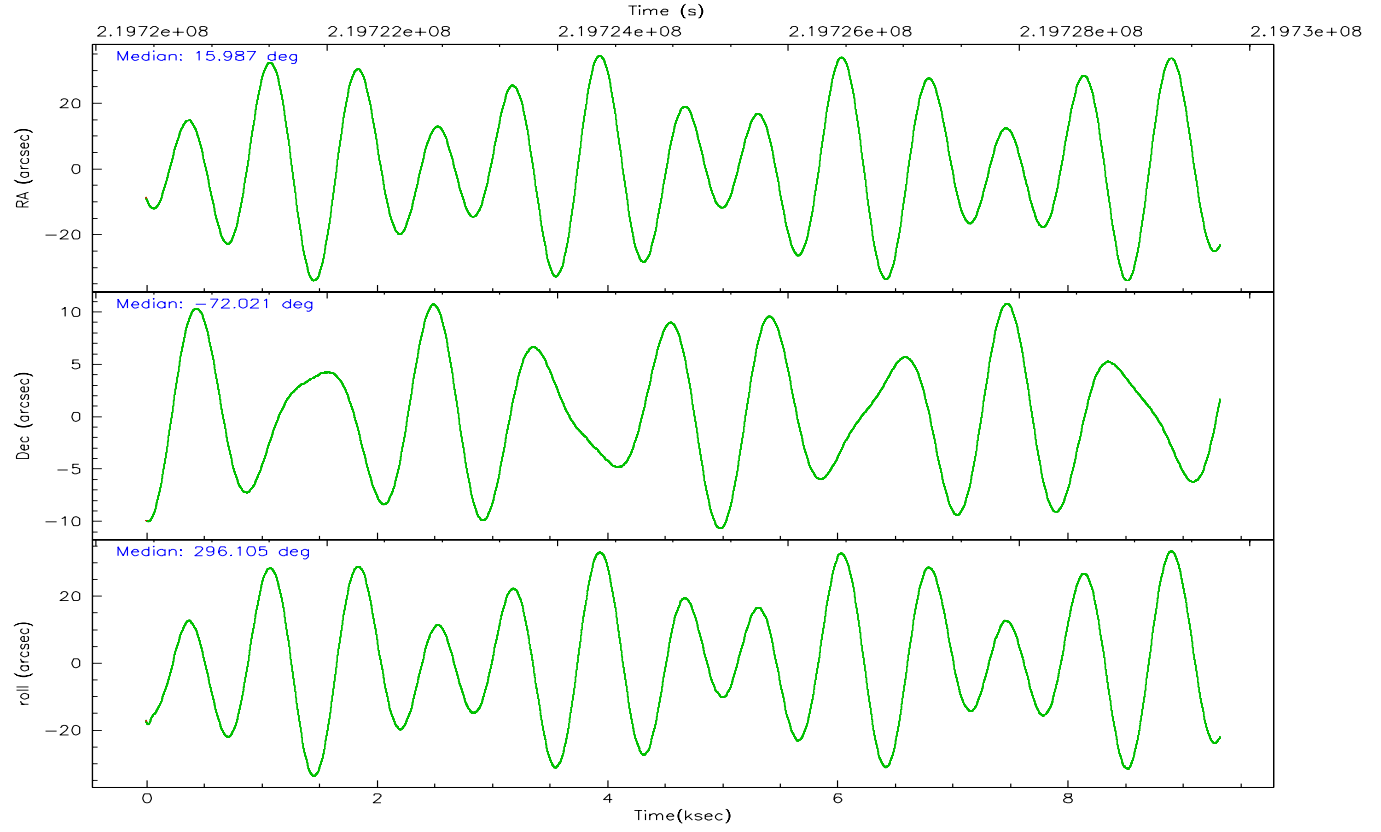
	ccd 4	ccd 5	ccd 6	ccd 7	ccd 8	ccd 9
grade 0 events	2136	2700	2300	17255	3791	1860
	3%	4%	4%	16%	6%	3%
grade 1 events	54	44	28	316	50	29
	0%	0%	0%	0%	0%	0%
grade 2 events	1192	10572	1126	21485	2978	1008
	2%	17%	2%	21%	4%	2%
grade 3 events	622	866	544	7783	1460	578
	1%	1%	1%	7%	2%	1%
grade 4 events	530	903	554	7627	1405	573
	0%	1%	1%	7%	2%	1%
grade 5 events	1591	3673	1575	4517	2413	1828
	2%	5%	3%	4%	4%	3%
grade 6 events	827	16594	966	21258	3757	950
	1%	27%	1%	20%	6%	2%
grade 7 events	51782	25888	42765	21505	44386	40102
	88%	42%	85%	21%	73%	85%

2.2 Compared Parameters

Parameter	Planned	Actual	Parameter	Planned	Actual
Instrument	ACIS	ACIS	Obspar format version number	6	6
Detector	ACIS-456789	ACIS-456789	Obspar file type	PREDICTED	ACTUAL
Grating	NONE	NONE	Obspar update status	NONE	UPDATED
Data mode	VFAINT	VFAINT	On-chip summing requested	N	N
Observation mode	POINTING	POINTING	Subarray requested	NONE	NONE
Pointing RA	15.913361	15.98714382810045	Alternating exposures requested	N	N
Pointing Dec	-72.006516	-72.02141070692355	Primary exposure time	0.000000	3.2
Pointing Roll	295.885307	296.1121133669072			
Window start time	215654464.184000	215654464.184000			
Window stop time	220838464.184000	220838464.184000			
SIM focus pos (mm)	-0.684267	-0.6828225247311905			
SIM defocus (mm)	0	0.001444936568705701			
SIM translation stage pos (mm)	-190.132523	-190.1425803651734			
SIM translation stage offset (mm)	0	0.01005778216563158			
Observation start time	219721753.184000	219720222.60774			
Observation start date	2004-12-18T01:48:09	2004-12-18T01:23:42			
Observation end time	219729753.184000	219730552.5582			
Observation end date	2004-12-18T04:01:29	2004-12-18T04:15:52			
Read mode	TIMED	TIMED			

2.3 Aspect



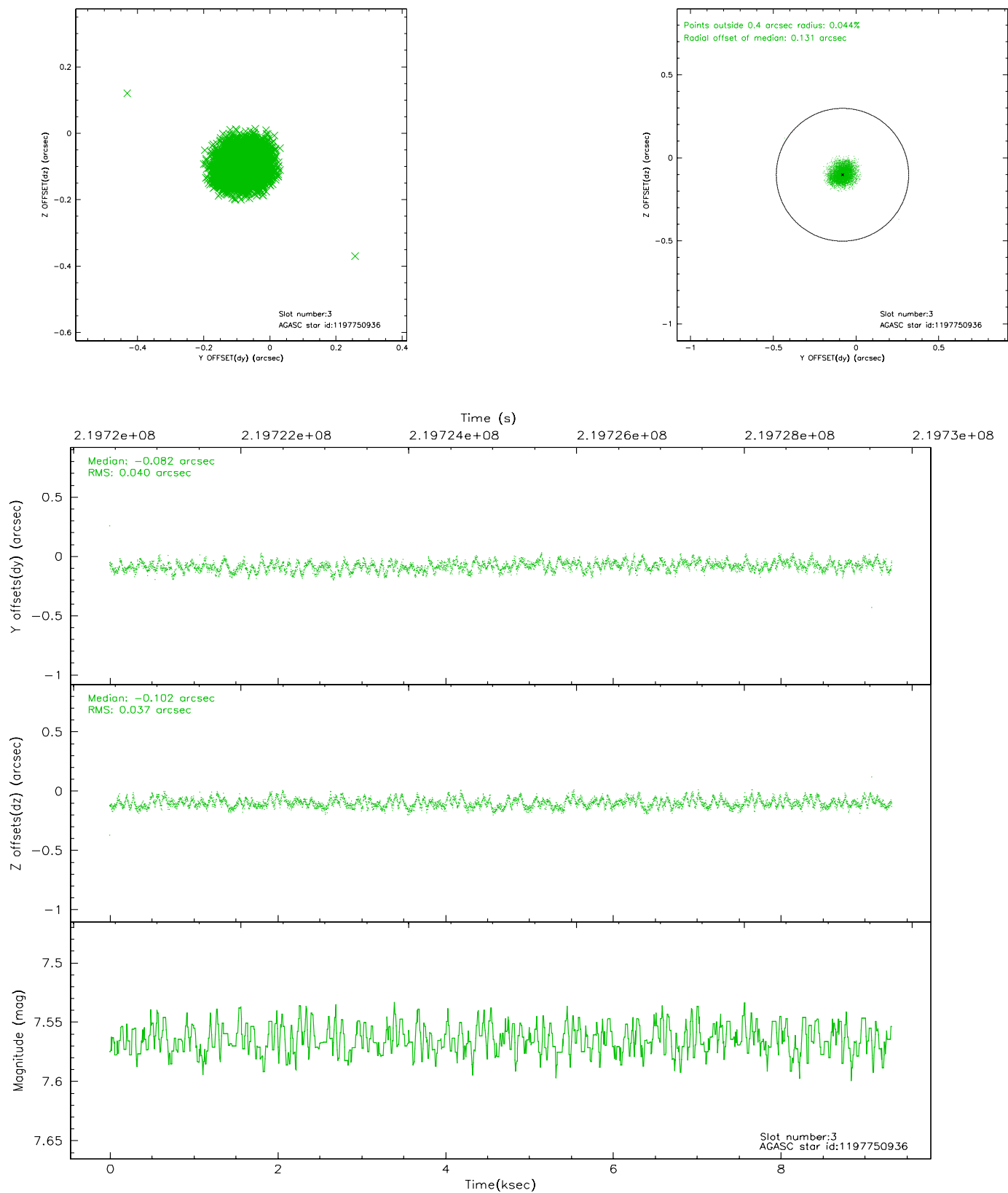


Slot Statistics

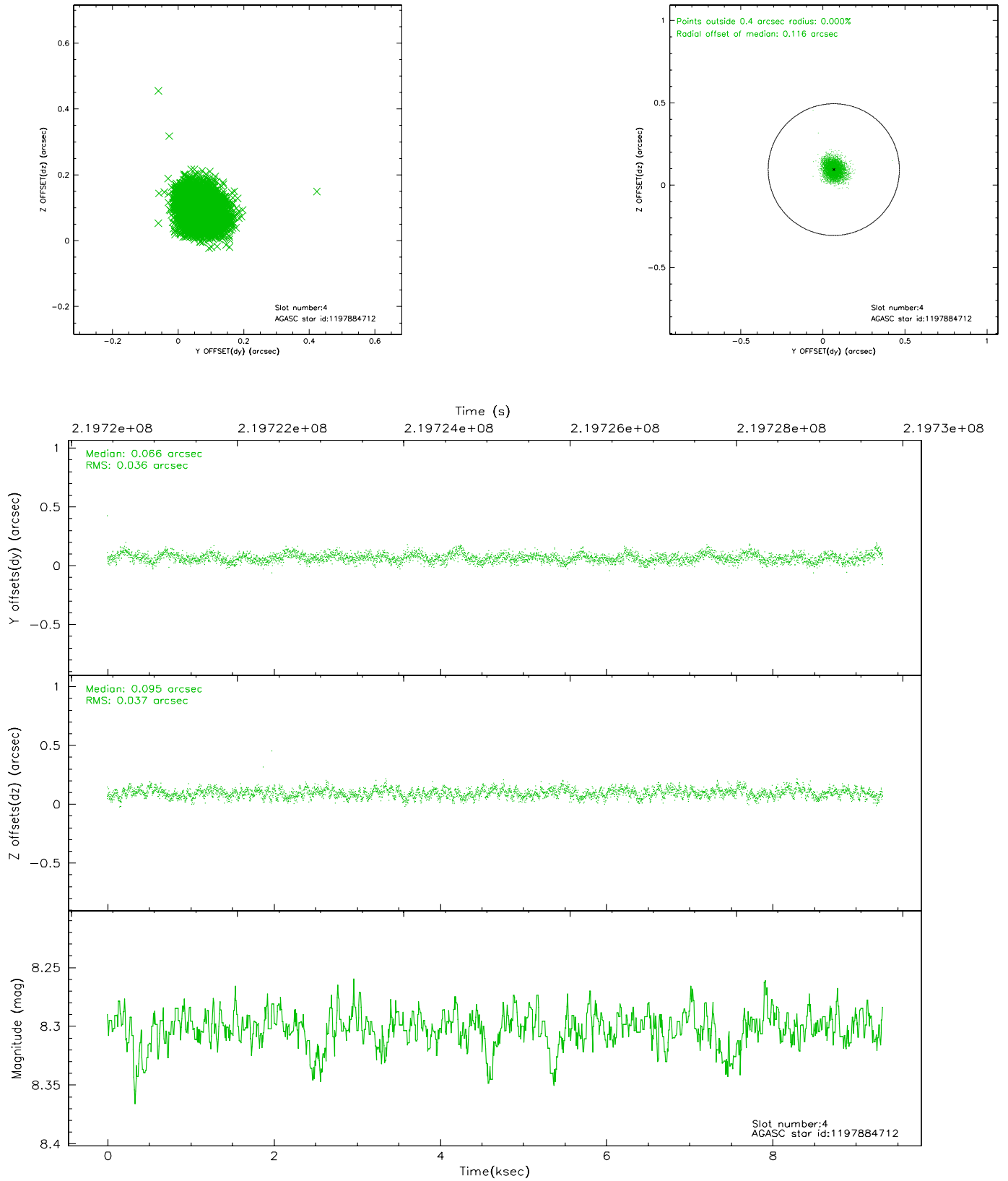
slot	status	id	mag	n_pts	med_dy	med_dz	dr1	dr2	ra	dec	mean_y	mean_z
0	FID	ACIS-S-2	7.10	2276	-0.029	-0.012	0.014	0.021	0.000000	0.000000	-759.37	-1732.68
1	FID	ACIS-S-4	7.20	2276	0.026	0.013	0.011	0.016	0.000000	0.000000	2153.70	175.24
2	FID	ACIS-S-6	7.35	2276	-0.024	0.008	0.009	0.014	0.000000	0.000000	403.36	813.29
3	GUIDE	1197750936	7.57	4551	-0.082	-0.102	0.058	0.091	15.387940	-71.549550	-1738.72	178.21
4	GUIDE	1197884712	8.30	4551	0.066	0.095	0.054	0.088	16.087398	-72.252690	880.88	-214.89
5	GUIDE	1197885104	9.35	4546	0.098	0.025	0.090	0.144	17.845067	-72.189368	1551.91	1611.02
6	GUIDE	1197885328	7.23	4550	0.009	-0.020	0.055	0.084	16.283090	-71.733943	-699.07	804.04
7	GUIDE	1198189696	7.39	4549	-0.090	0.001	0.057	0.093	15.223750	-72.697522	1919.79	-1751.68

2.4 Star Slots

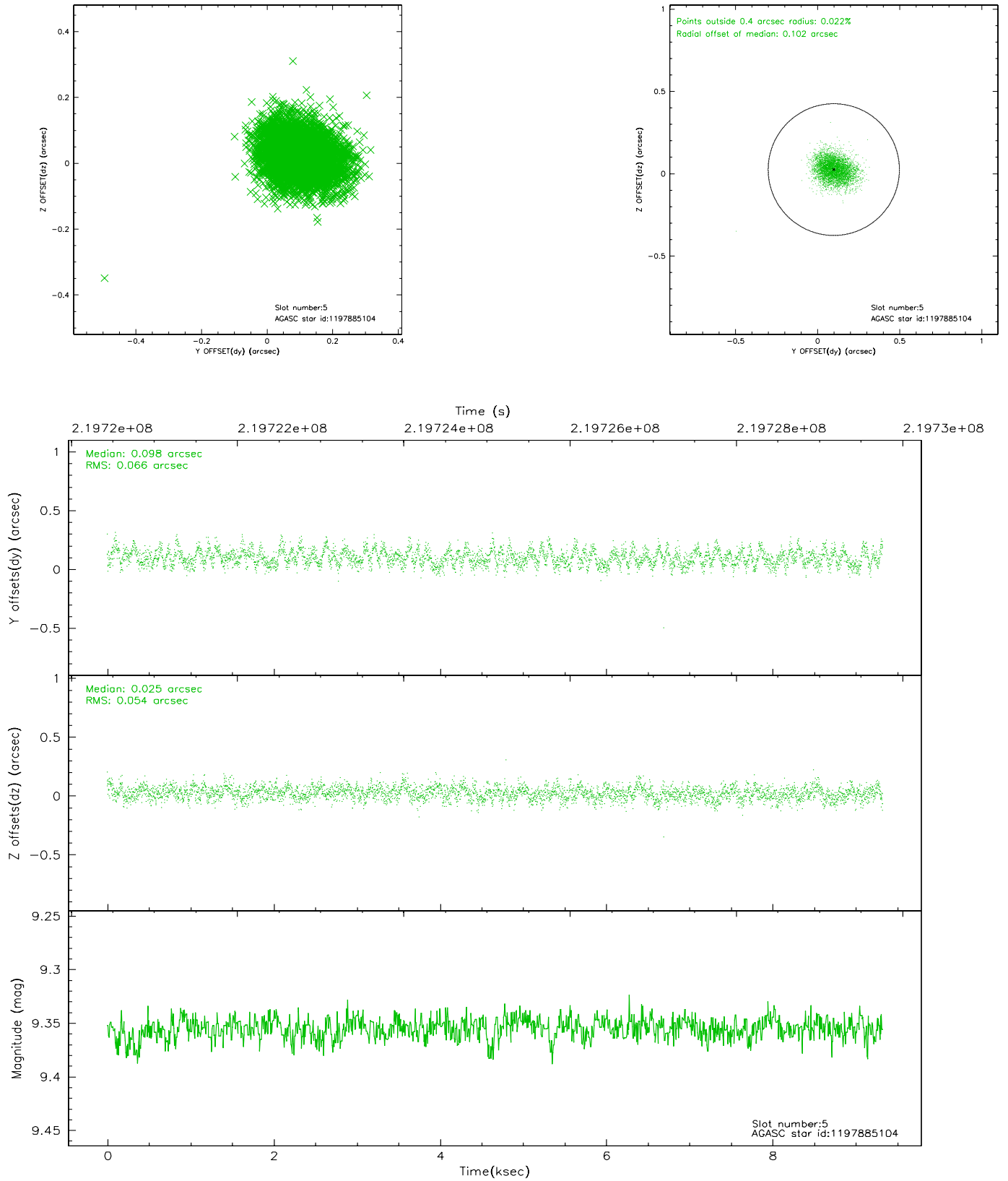
2.4.1 Slot 3



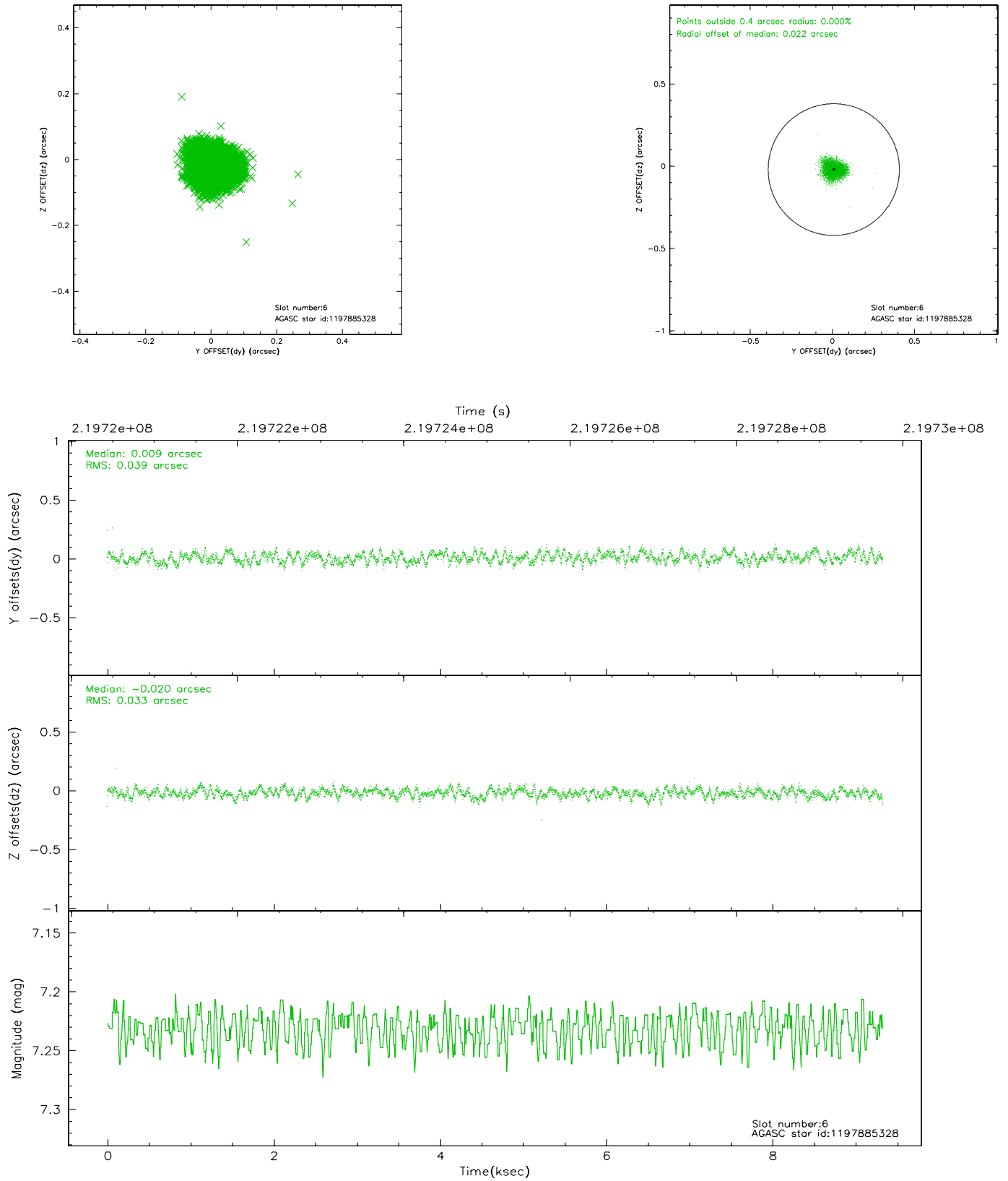
2.4.2 Slot 4



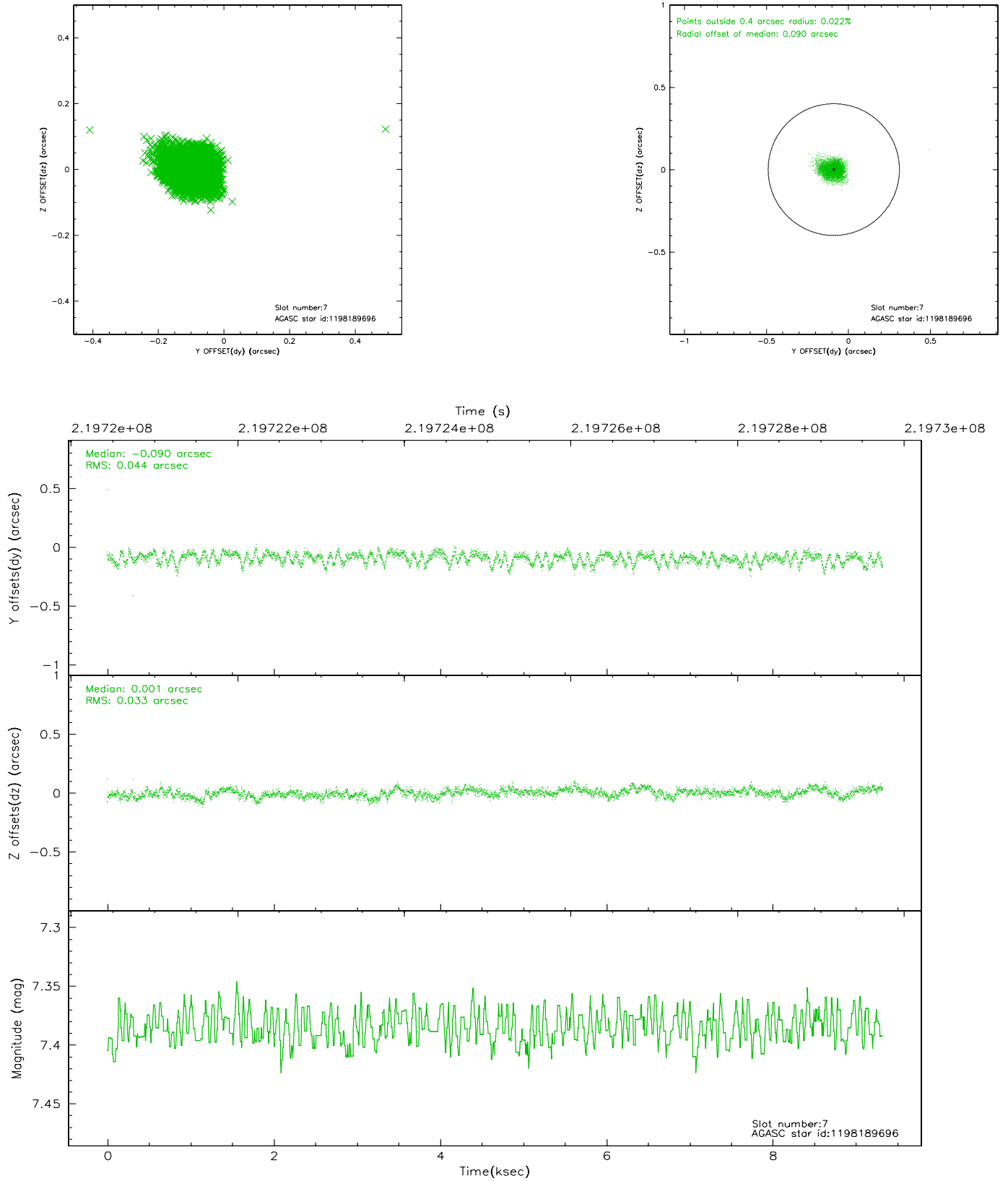
2.4.3 Slot 5



2.4.4 Slot 6

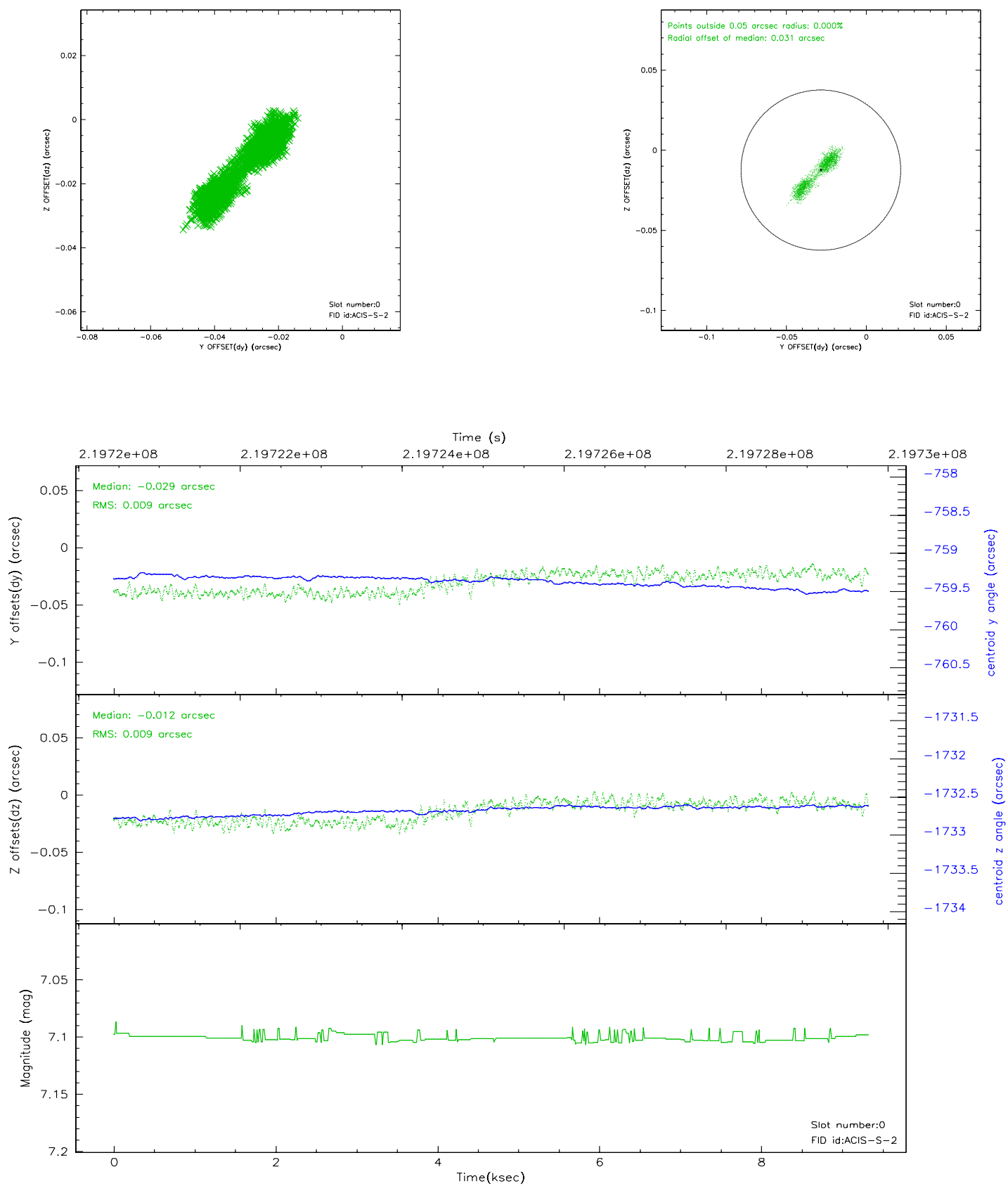


2.4.5 Slot 7

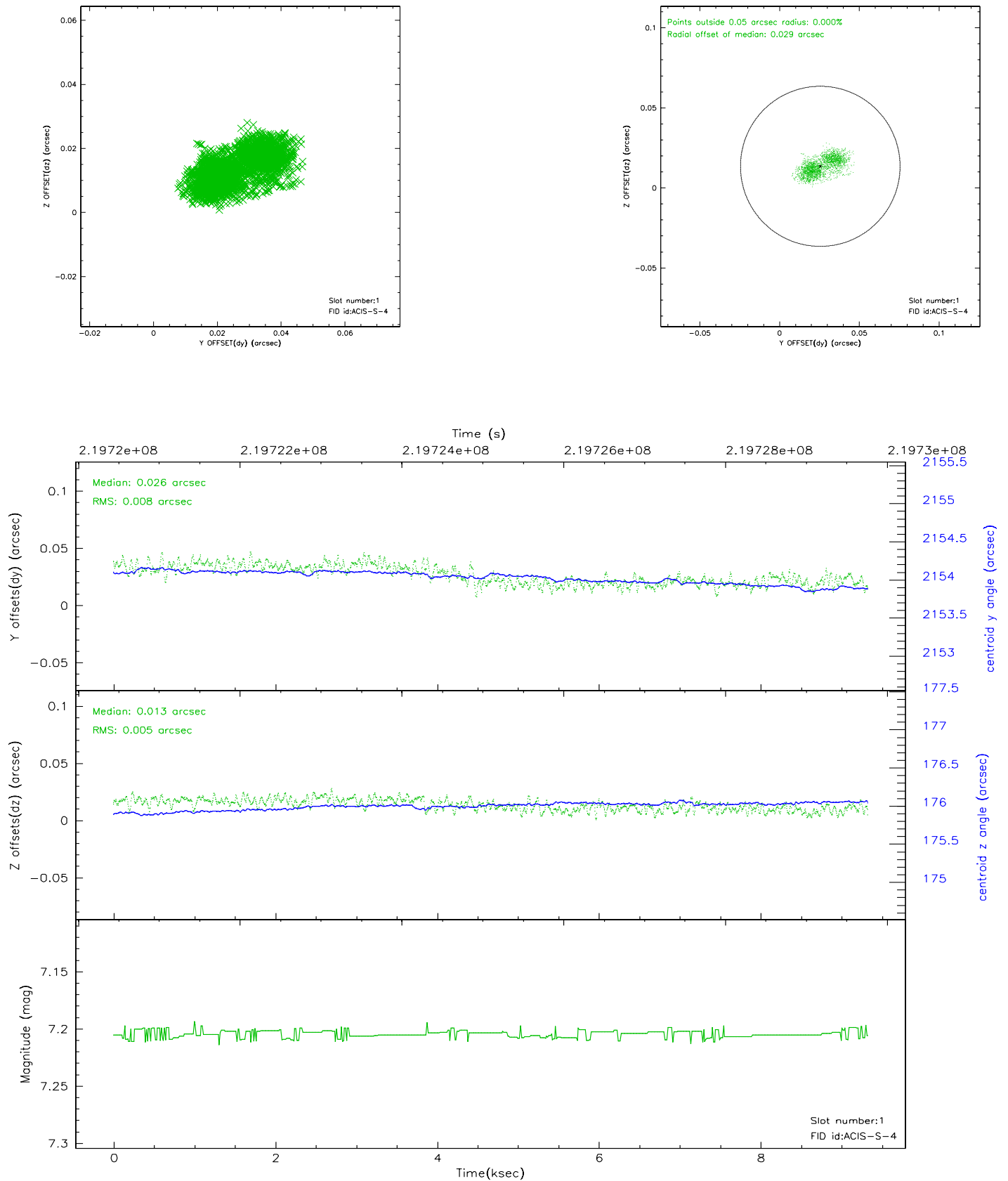


2.5 FID Slots

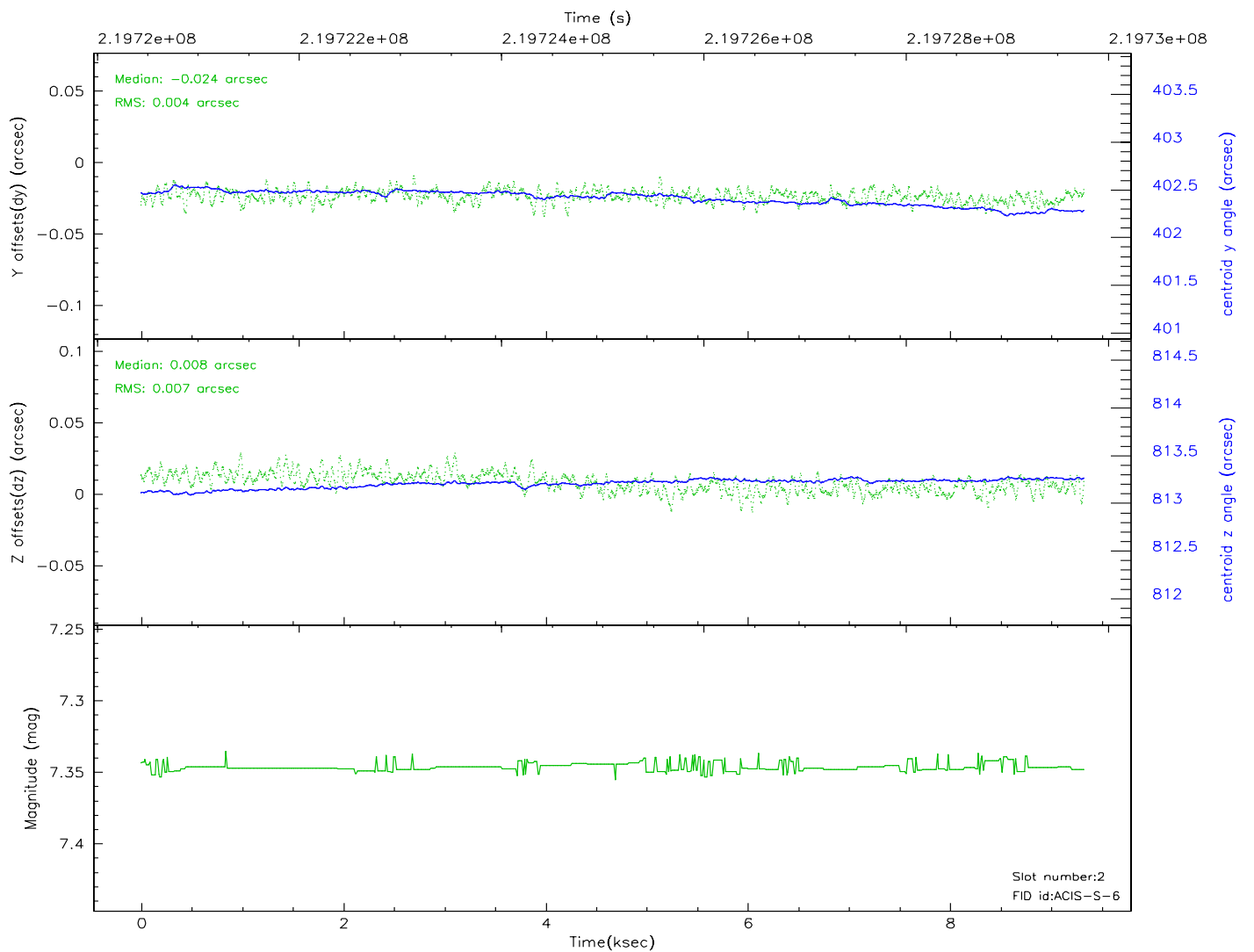
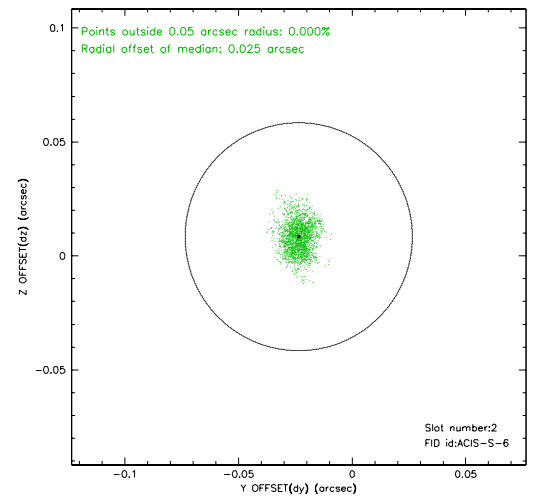
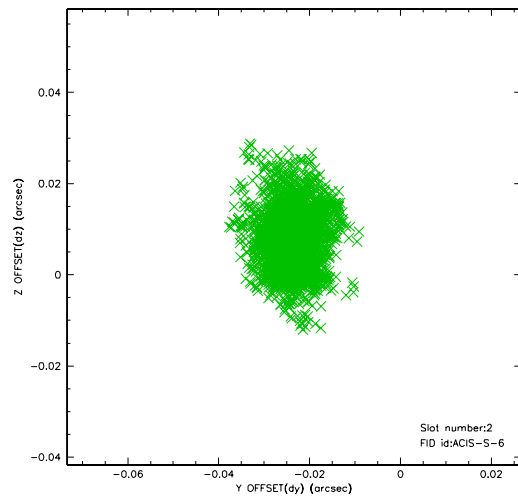
2.5.1 Slot 0



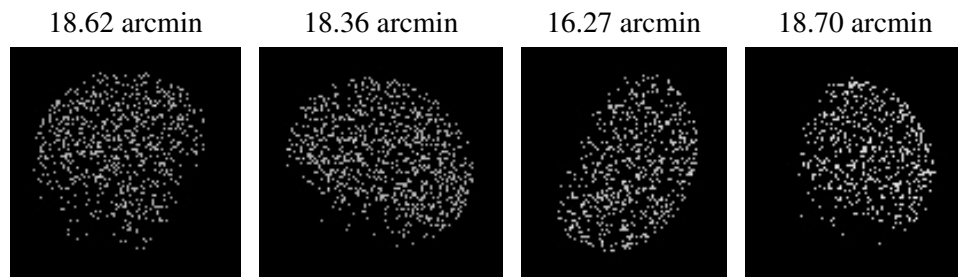
2.5.2 Slot 1



2.5.3 Slot 2



3 Point Sources



A Summary

A.1 Status

V&V Scientist	Jen Lauer
V&V Date (YYYY-MM-DD)	2006.04.10
V&V Edition	1
V&V Disposition and Status	OK
V&V Charge Time	7.955199

A.2 Comments

Window constraint met.