

# V&V Reference Report

## L2 ASCDS Version : 7.6.7

Observation 6071 - L2 Version 002  
Chandra X-Ray Center

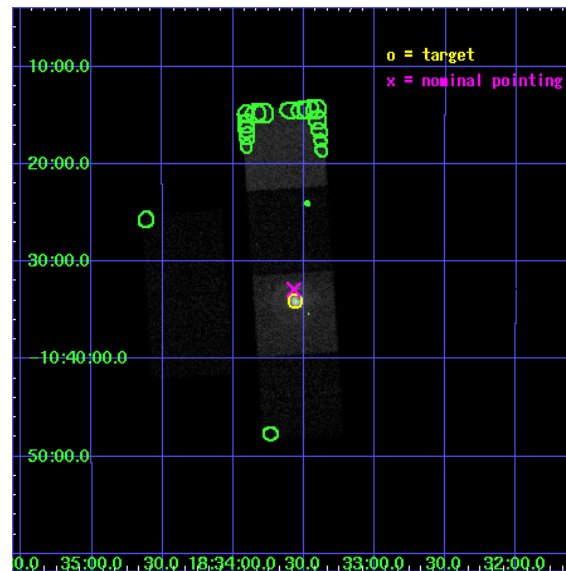
L2 Processing Date: Feb 25 2006

## Contents

<b>1</b>	<b>Front</b>	<b>2</b>
<b>2</b>	<b>OBI</b>	<b>3</b>
2.1	OBI . . . . .	3
2.1.1	Images . . . . .	3
2.1.2	Bias . . . . .	3
2.1.3	Parameters . . . . .	4
2.1.4	Events . . . . .	4
2.2	Compared Parameters . . . . .	5
2.3	Aspect . . . . .	6
2.4	Star Slots . . . . .	9
2.4.1	Slot 3 . . . . .	9
2.4.2	Slot 4 . . . . .	10
2.4.3	Slot 5 . . . . .	11
2.4.4	Slot 6 . . . . .	12
2.4.5	Slot 7 . . . . .	13
2.5	FID Slots . . . . .	14
2.5.1	Slot 0 . . . . .	14
2.5.2	Slot 1 . . . . .	15
2.5.3	Slot 2 . . . . .	16
<b>3</b>	<b>Point Sources</b>	<b>17</b>
<b>A</b>	<b>Summary</b>	<b>18</b>
A.1	Status . . . . .	18
A.2	Comments . . . . .	18

# 1 Front

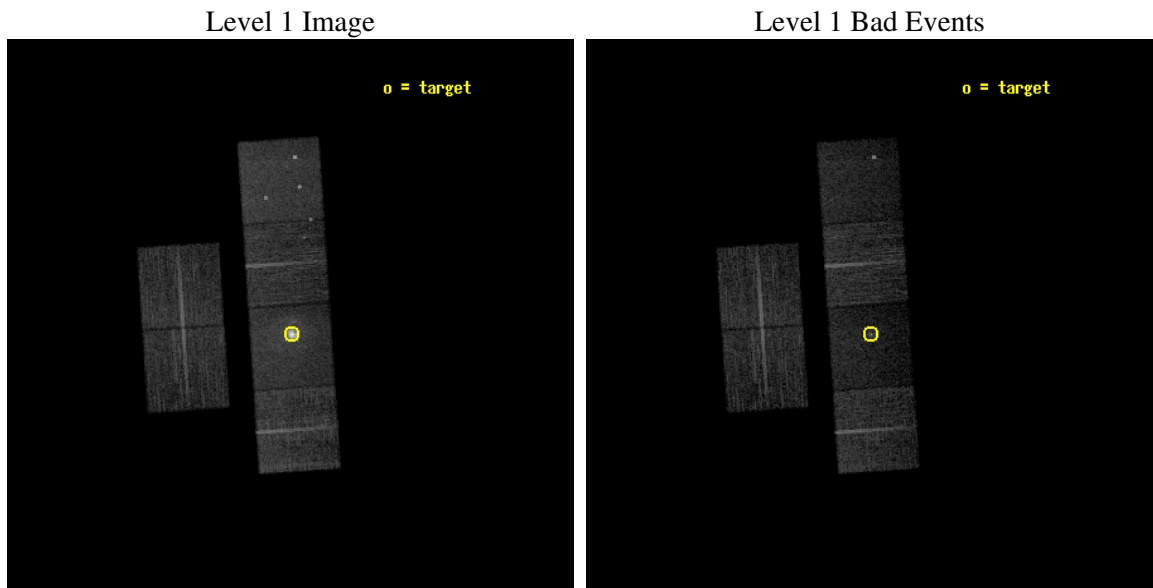
seq_num	590398
obs_id	6071
title	AO6A Observations of the Standard Candles Cas A and G21.5-09
observer	Dr. CXC Calibration
object	G21.5-09[S3,-120,-1.0,0,0]
dtcycle	0
cycle	P
ra_targ	278.389583
dec_targ	-10.568528
ra_nom	278.39277549858
dec_nom	-10.54802473601
roll_nom	86.157267470805
revision	2
ontime	9759.9999636412
livetime	9636.4129673351
ontime2	9759.9999636412
ontime3	9753.5180330276
ontime5	9759.9999636412
ontime6	9759.9999636412
ontime7	9759.9999636412
ontime8	9753.5180131495
l2events	113193



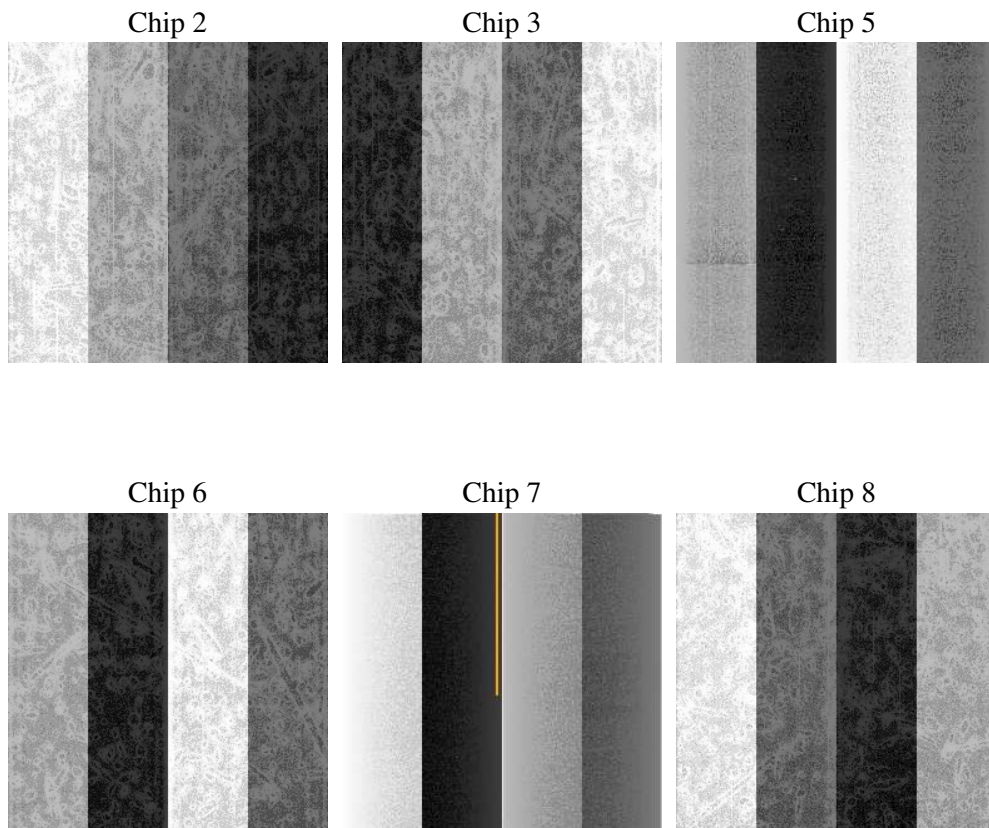
## 2 OBI

### 2.1 OBI

#### 2.1.1 Images



#### 2.1.2 Bias



### 2.1.3 Parameters

obi_num	0
ascdsver	7.6.7
caldbver	3.2.1
date	2006-02-25T08:51:12
revision	2

sched_exp_time	9800.000000
ontime	9765.1354024112
ontime2	9765.1354024112
ontime3	9758.6534717977
ontime5	9765.1354323328
ontime6	9765.1354024112
ontime7	9765.1354024112
ontime8	9758.6534519196
l1events	406918

### 2.1.4 Events

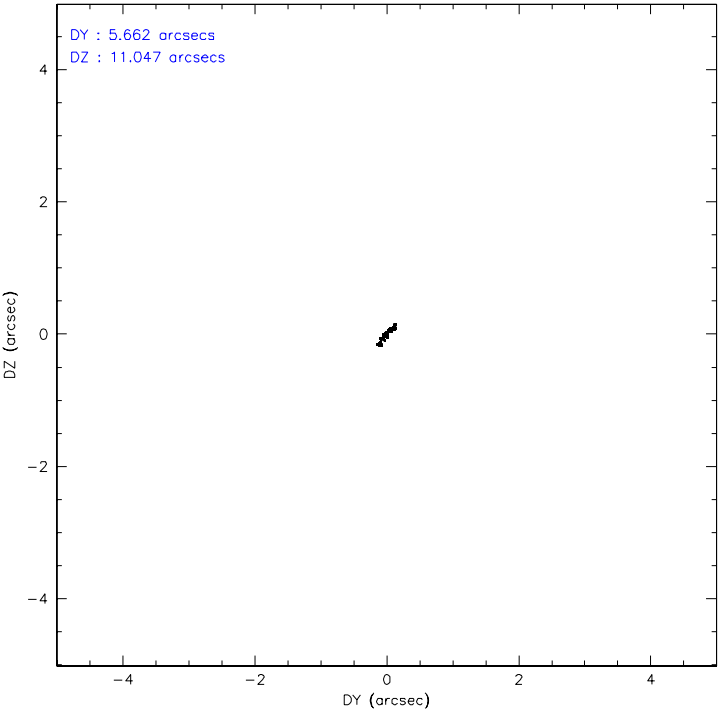
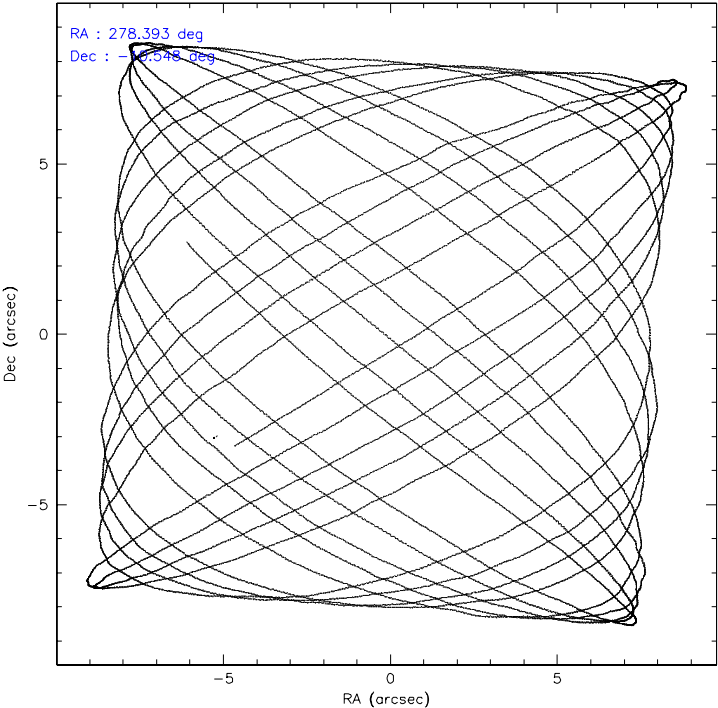
	ccd 2	ccd 3	ccd 5	ccd 6	ccd 7	ccd 8
level 1 events	58689	54090	72403	60127	90303	71306
rejected events	53088	48768	34933	53118	30870	53997
rejected %	90%	90%	48%	88%	34%	75%

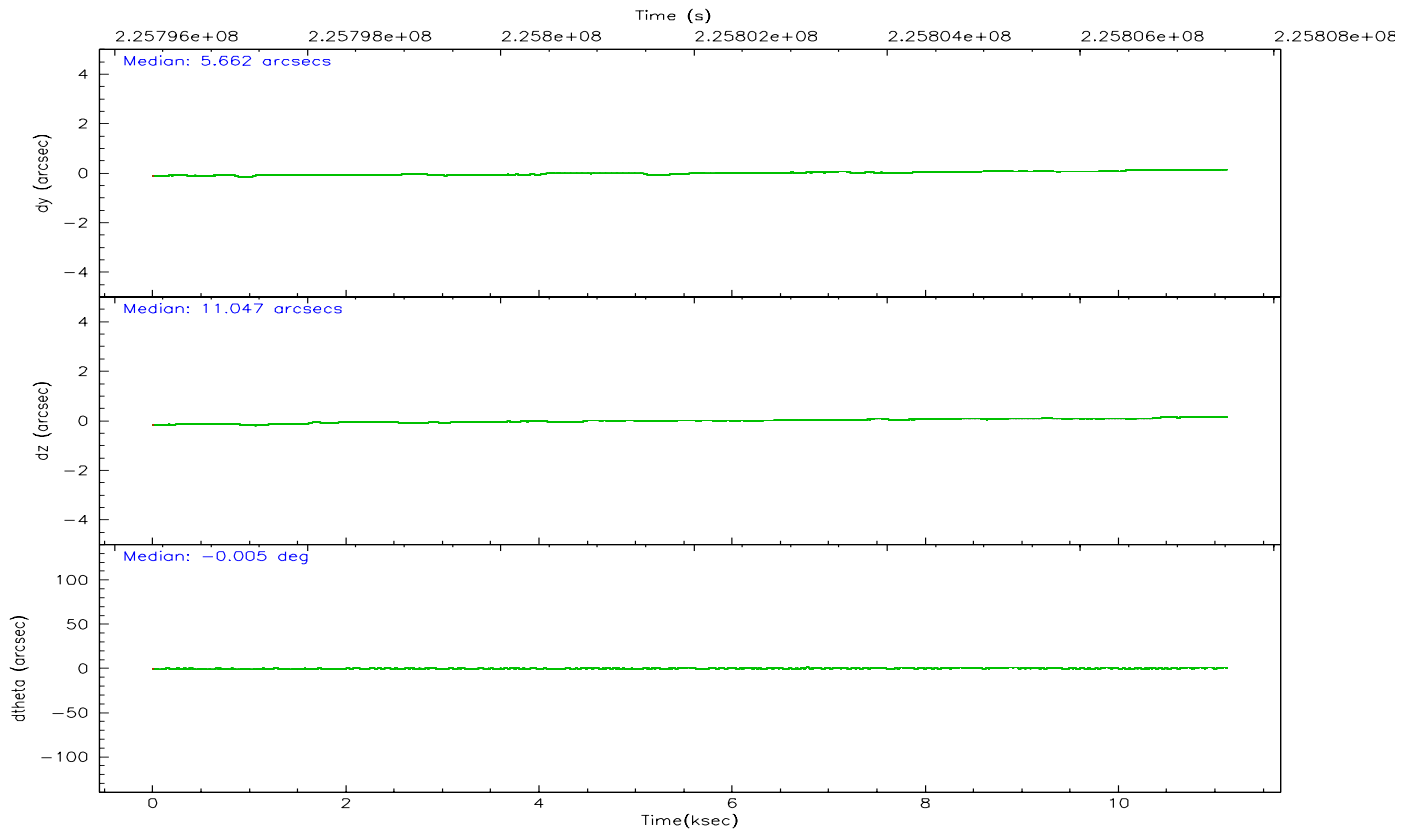
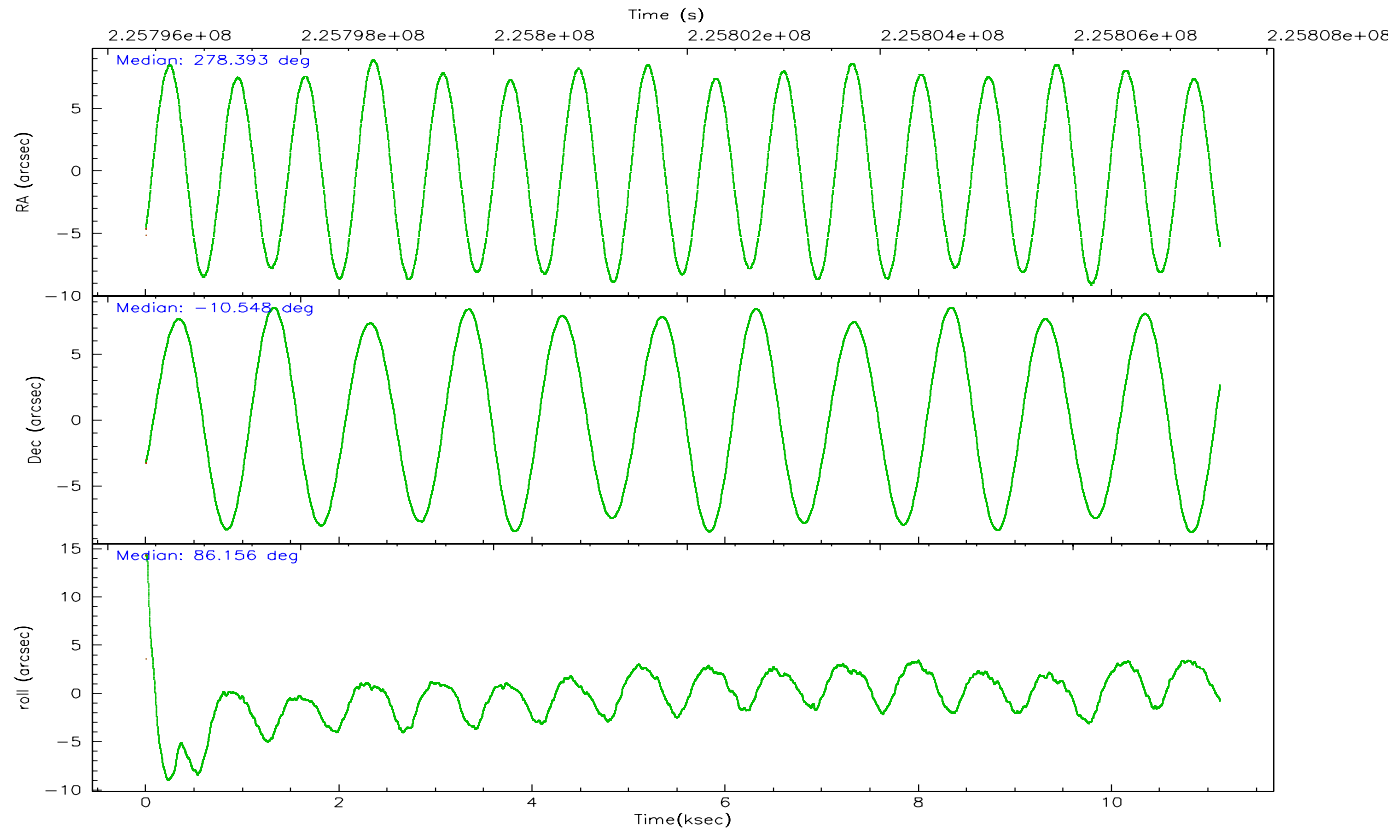
	ccd 2	ccd 3	ccd 5	ccd 6	ccd 7	ccd 8
grade 0 events	2150	2011	3819	2988	8696	5052
	3%	3%	5%	4%	9%	7%
grade 1 events	34	38	90	33	76	50
	0%	0%	0%	0%	0%	0%
grade 2 events	1304	1151	12092	1419	15988	3931
	2%	2%	16%	2%	17%	5%
grade 3 events	612	585	1031	691	5235	2107
	1%	1%	1%	1%	5%	2%
grade 4 events	588	614	977	693	4929	1874
	1%	1%	1%	1%	5%	2%
grade 5 events	1665	1872	4497	1907	4786	2872
	2%	3%	6%	3%	5%	4%
grade 6 events	948	966	19571	1222	24620	4371
	1%	1%	27%	2%	27%	6%
grade 7 events	51388	46853	30326	51174	25973	51049
	87%	86%	41%	85%	28%	71%

## 2.2 Compared Parameters

Parameter	Planned	Actual	Parameter	Planned	Actual
Instrument	ACIS	ACIS	Obspar format version number	6	6
Detector	ACIS-235678	ACIS-235678	Obspar file type	PREDICTED	ACTUAL
Grating	NONE	NONE	Obspar update status	NONE	UPDATED
Data mode	VFAINT	VFAINT	On-chip summing requested	N	N
Observation mode	POINTING	POINTING	Subarray requested	NONE	NONE
Pointing RA	278.405294	278.3927754985845	Alternating exposures requested	N	N
Pointing Dec	-10.572274	-10.54802473600969	Primary exposure time	0.000000	3.2
Pointing Roll	86.002918	86.15726747080507			
Window start time	223603264.184000	223603264.184000			
Window stop time	233884864.184000	233884864.184000			
SIM focus pos (mm)	-0.684267	-0.6828225247311905			
SIM defocus (mm)	0	0.001444936568705701			
SIM translation stage pos (mm)	-190.132523	-190.1425803651734			
SIM translation stage offset (mm)	0	0.01005778216563158			
Observation start time	225797727.184000	225796196.86957			
Observation start date	2005-02-26T09:34:23	2005-02-26T09:09:56			
Observation end time	225807527.184000	225807718.38259			
Observation end date	2005-02-26T12:17:43	2005-02-26T12:21:58			
Read mode	TIMED	TIMED			

2.3 Aspect





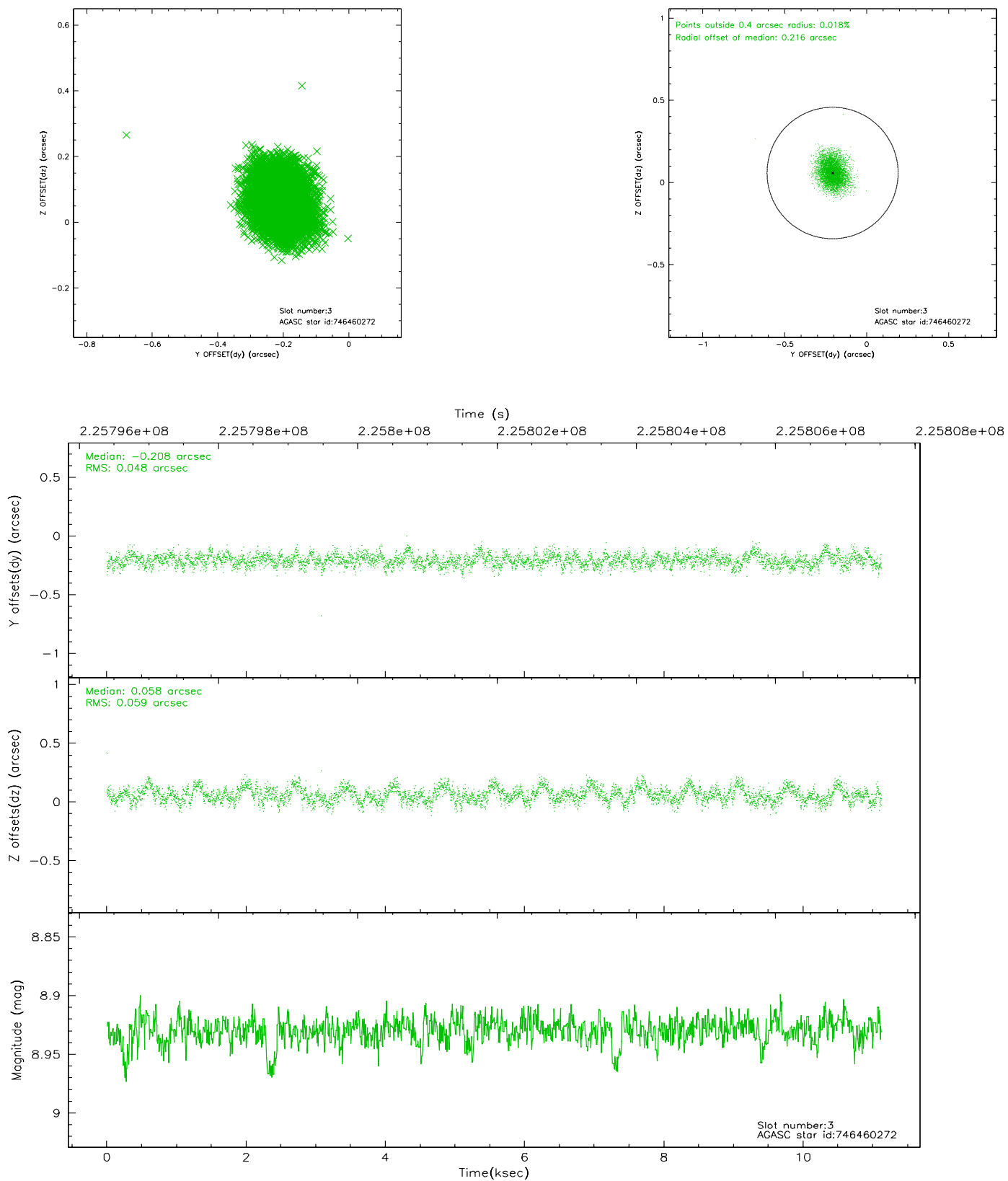
### Slot Statistics

slot	status	id	mag	n_pts	med_dy	med_dz	dr1	dr2	ra	dec	mean_y	mean_z
0	FID	ACIS-S-2	7.10	2714	-0.056	-0.001	0.006	0.010	0.000000	0.000000	-758.41	-1732.28
1	FID	ACIS-S-4	7.21	2714	0.063	0.027	0.006	0.011	0.000000	0.000000	2154.76	175.79
2	FID	ACIS-S-5	7.23	2714	-0.038	-0.018	0.007	0.011	0.000000	0.000000	-1810.66	169.90
3	GUIDE	746460272	8.93	5422	-0.208	0.058	0.082	0.131	278.847488	-10.152127	1617.48	-1457.41
4	GUIDE	746461728	9.76	5424	-0.040	0.064	0.115	0.184	278.986921	-10.530755	291.64	-2043.15
5	GUIDE	746462392	8.54	5424	0.082	0.048	0.078	0.126	279.038421	-10.890715	-990.03	-2313.59
6	GUIDE	746462456	8.38	5424	0.001	-0.168	0.064	0.102	278.652171	-10.530173	211.55	-861.57
7	GUIDE	746462680	9.02	5424	0.165	-0.005	0.077	0.122	278.660755	-10.782756	-692.43	-953.91

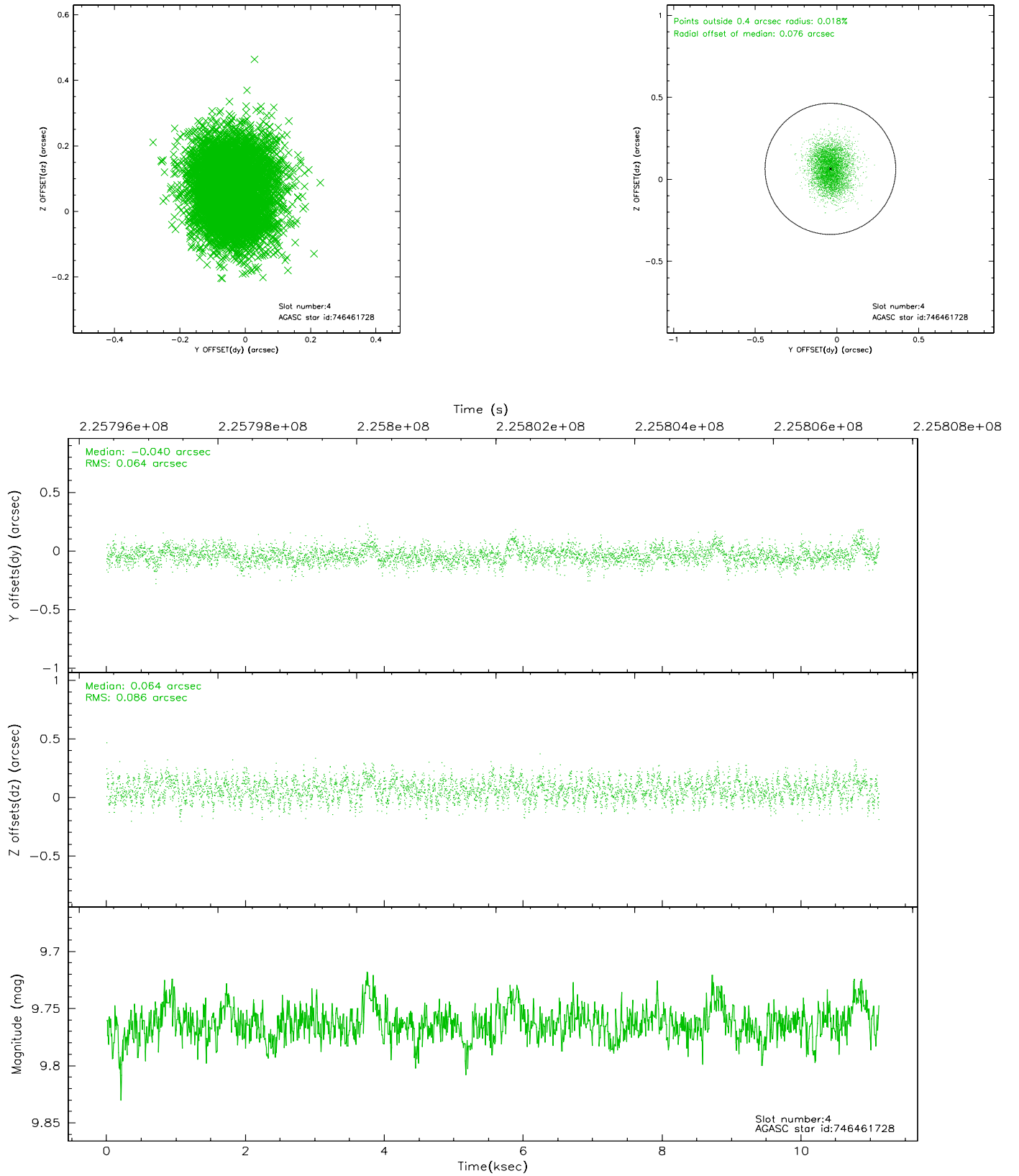


## 2.4 Star Slots

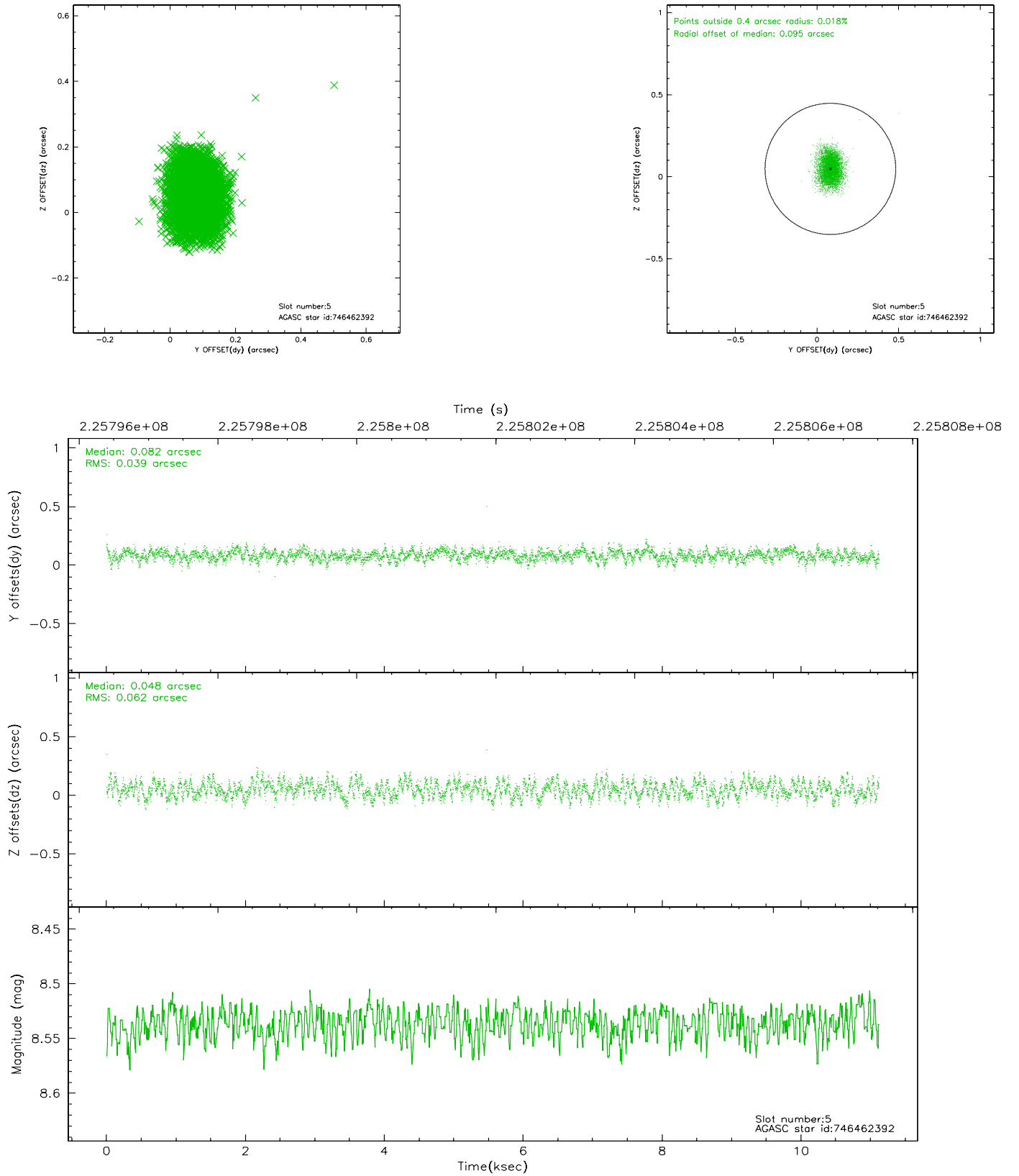
### 2.4.1 Slot 3



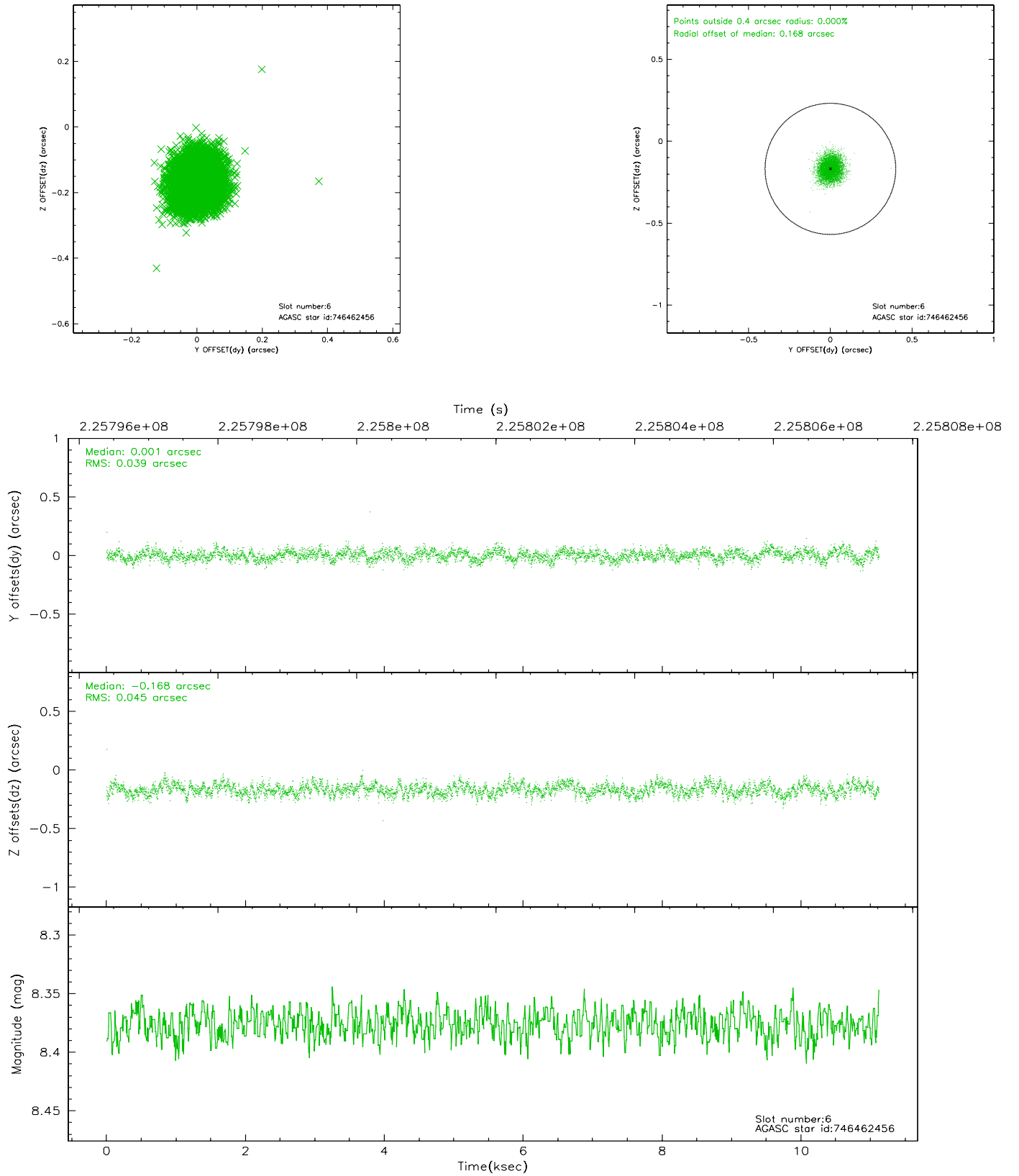
## 2.4.2 Slot 4



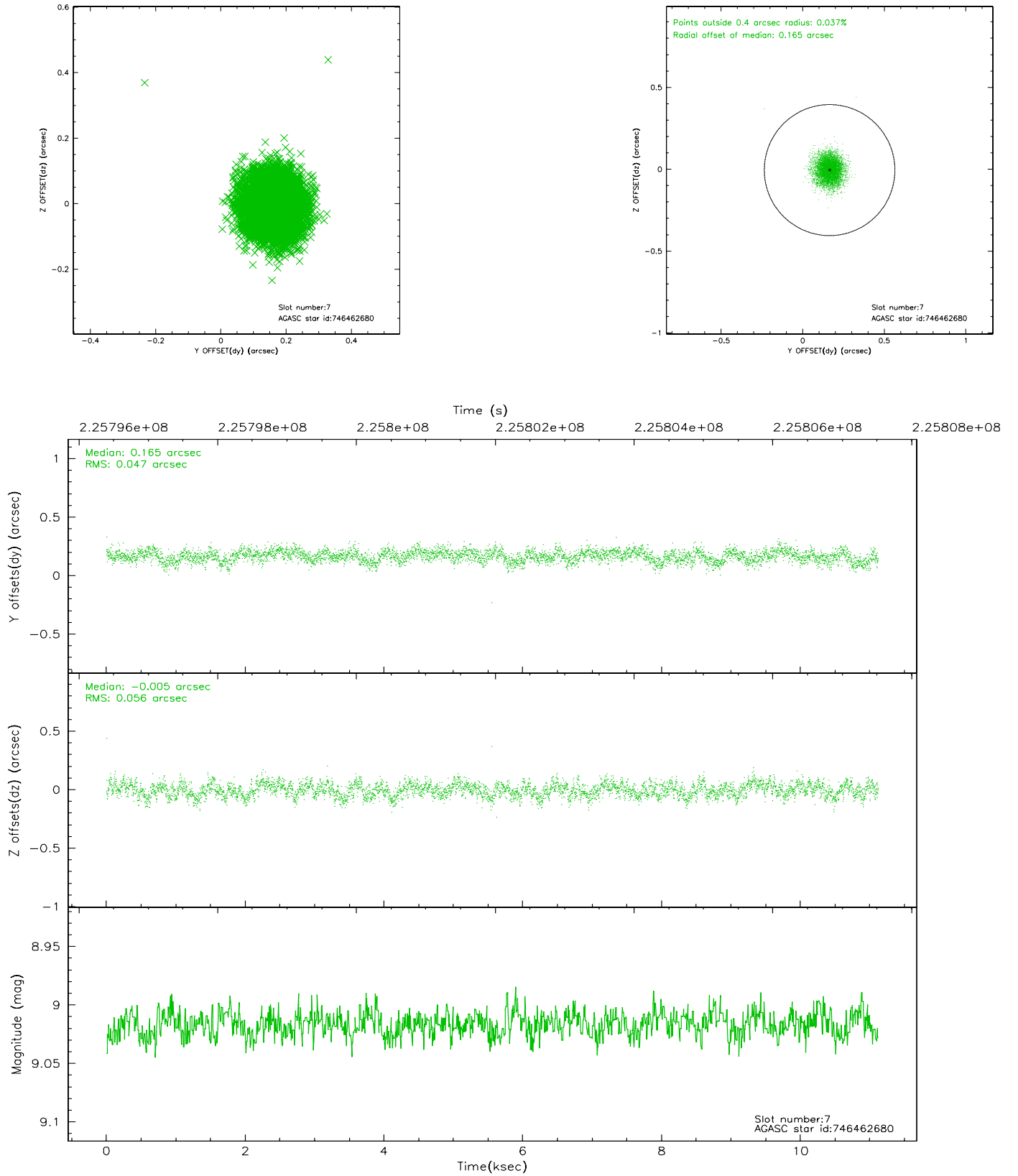
### 2.4.3 Slot 5



## 2.4.4 Slot 6

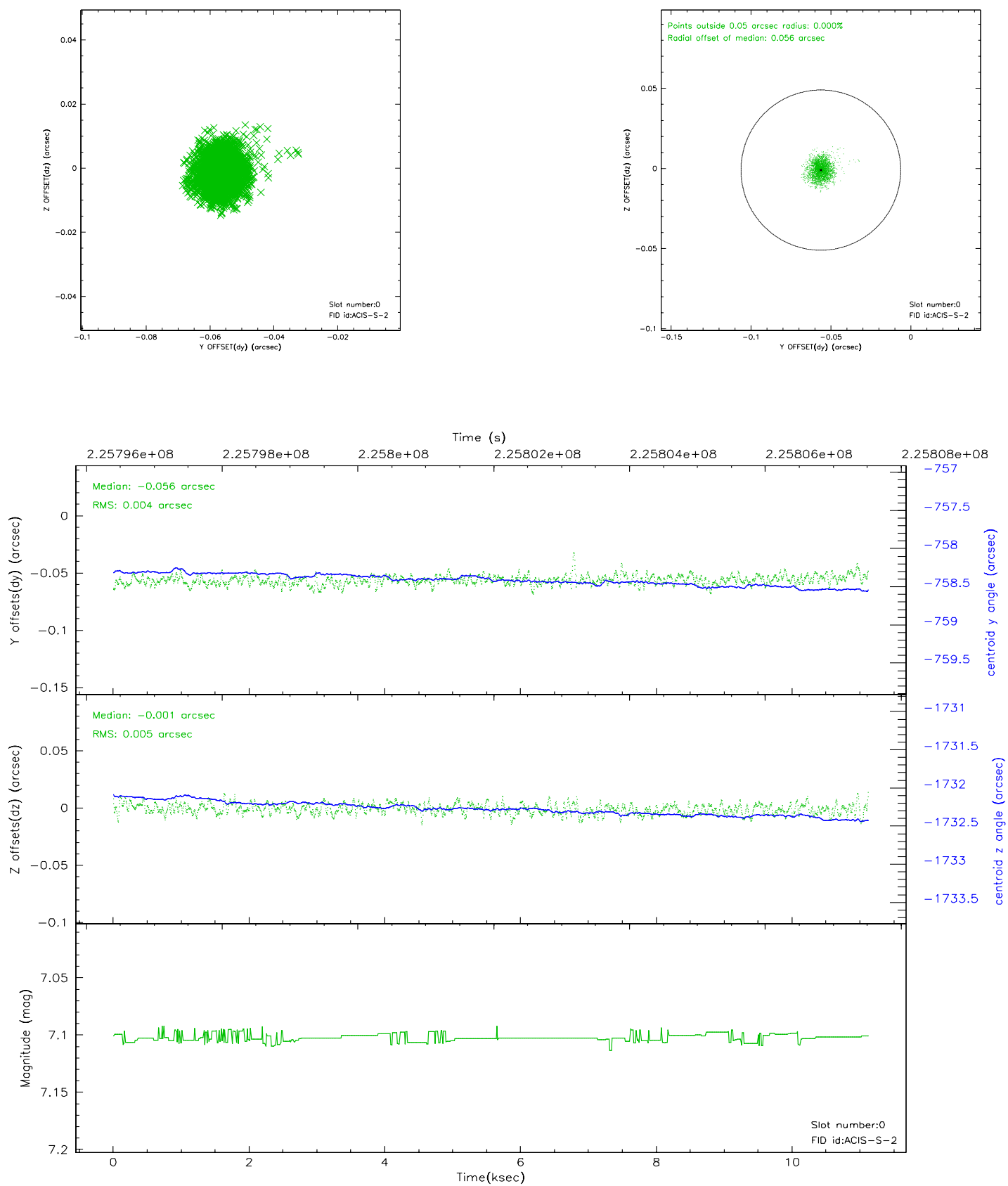


## 2.4.5 Slot 7

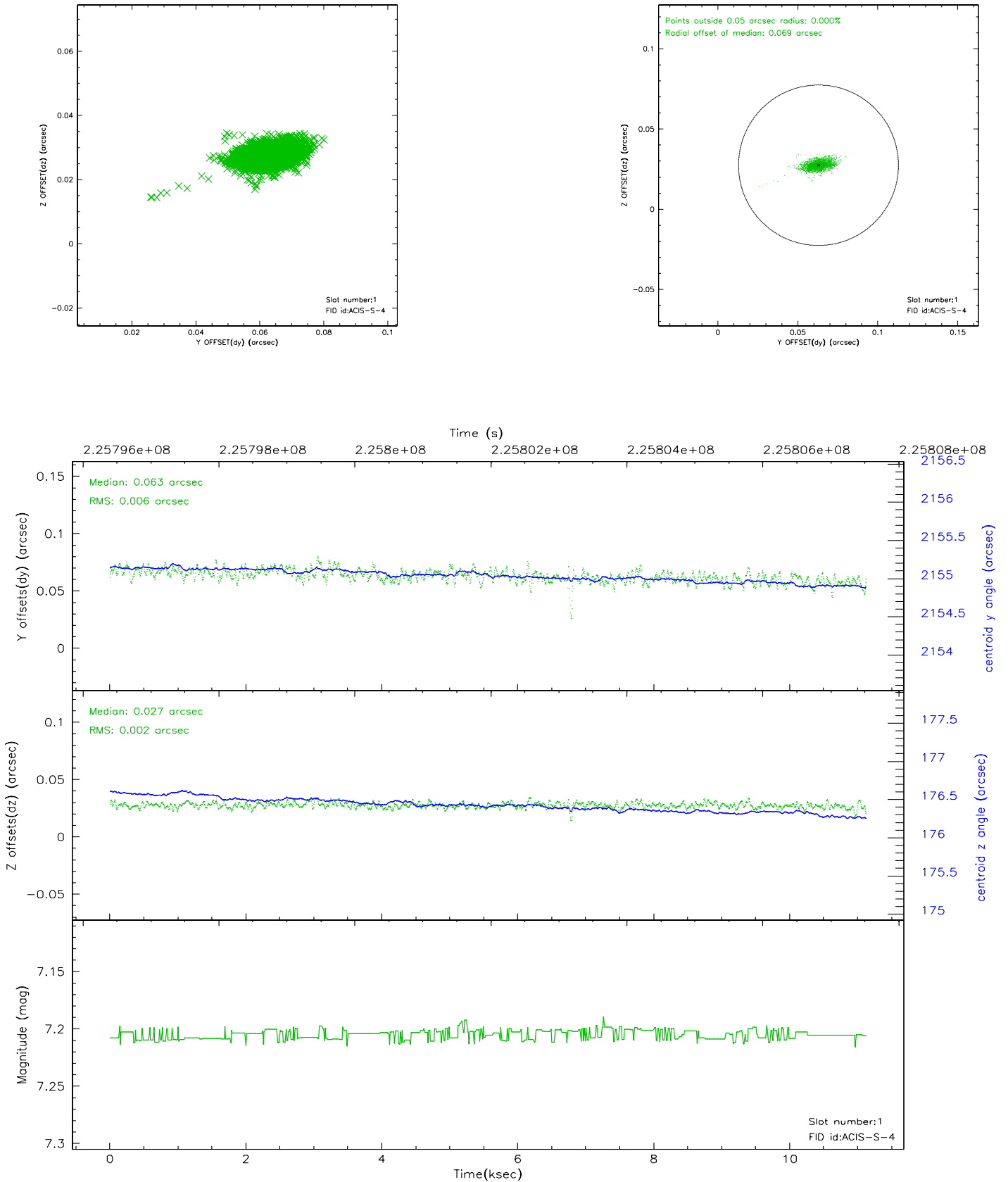


## 2.5 FID Slots

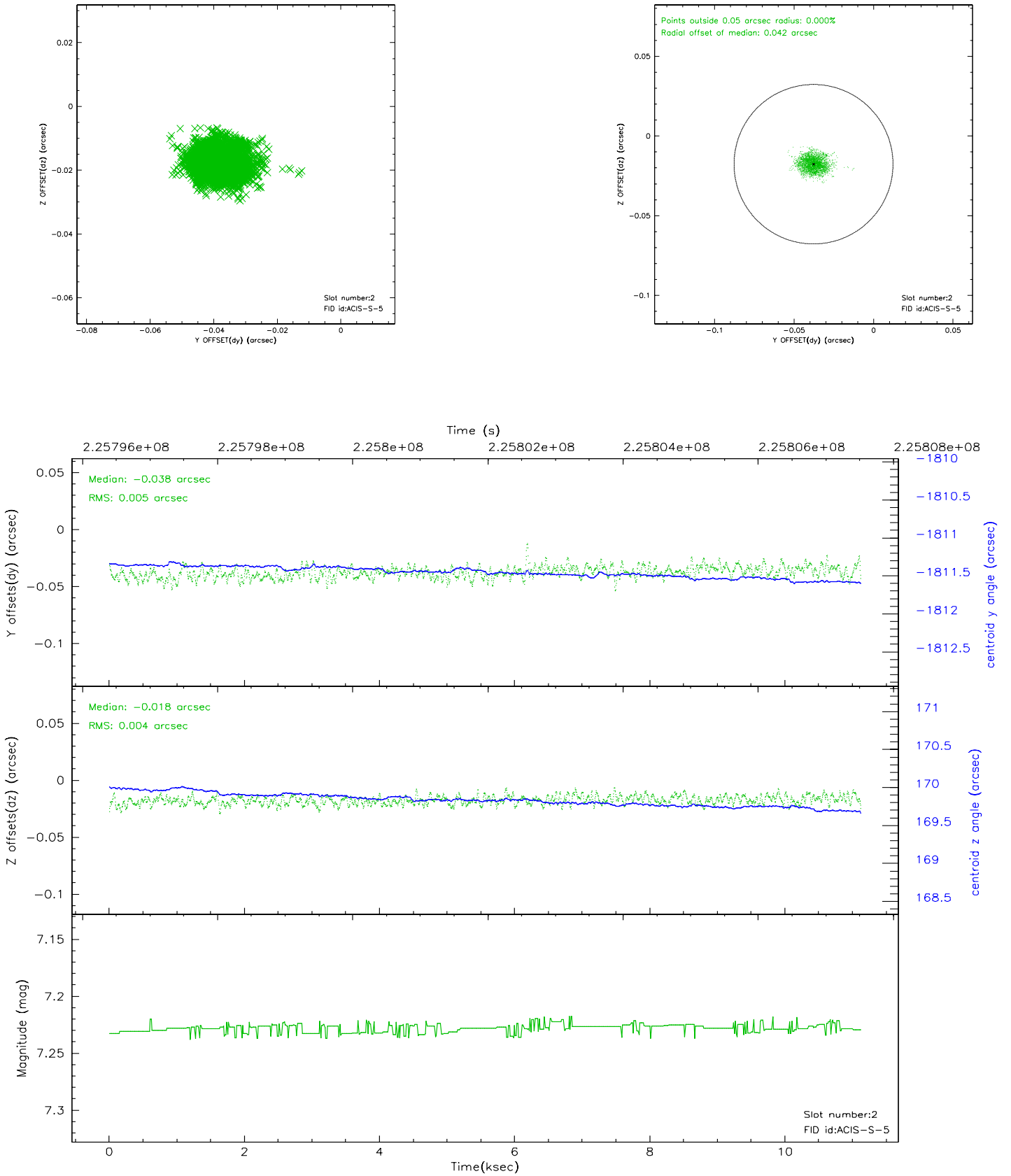
### 2.5.1 Slot 0



## 2.5.2 Slot 1

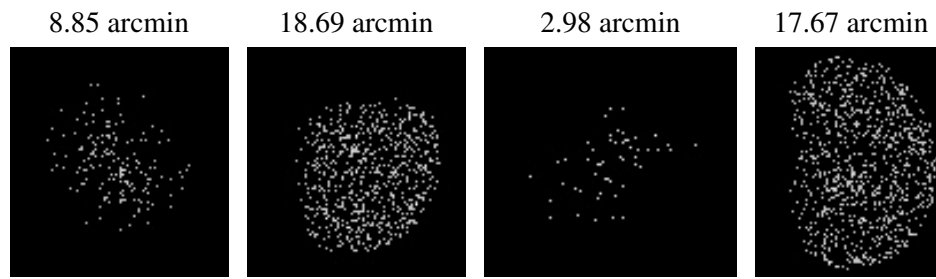


### 2.5.3 Slot 2





### 3 Point Sources



## A Summary

### A.1 Status

V&V Scientist	Jen Lauer
V&V Date (YYYY-MM-DD)	2006.02.27
V&V Edition	1
V&V Disposition and Status	OK
V&V Charge Time	9.759999

### A.2 Comments

Window constraint met.