

V&V Reference Report

L2 ASCDS Version : 7.6.7.1

Observation 6055 - L2 Version 002
Chandra X-Ray Center

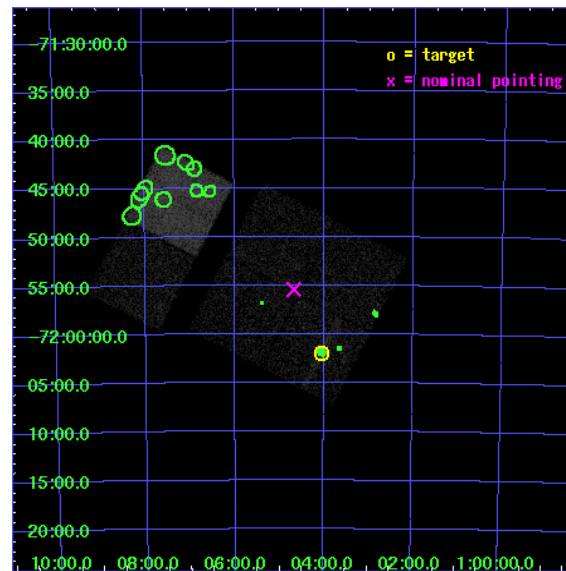
L2 Processing Date : Apr 8 2006

Contents

1	Front	2
2	OBI	3
2.1	OBI	3
2.1.1	Images	3
2.1.2	Bias	3
2.1.3	Parameters	4
2.1.4	Events	4
2.2	Compared Parameters	5
2.3	Aspect	6
2.4	Star Slots	9
2.4.1	Slot 3	9
2.4.2	Slot 4	10
2.4.3	Slot 5	11
2.4.4	Slot 6	12
2.4.5	Slot 7	13
2.5	FID Slots	14
2.5.1	Slot 0	14
2.5.2	Slot 1	15
2.5.3	Slot 2	16
3	Point Sources	17
A	Summary	18
A.1	Status	18
A.2	Comments	18

1 Front

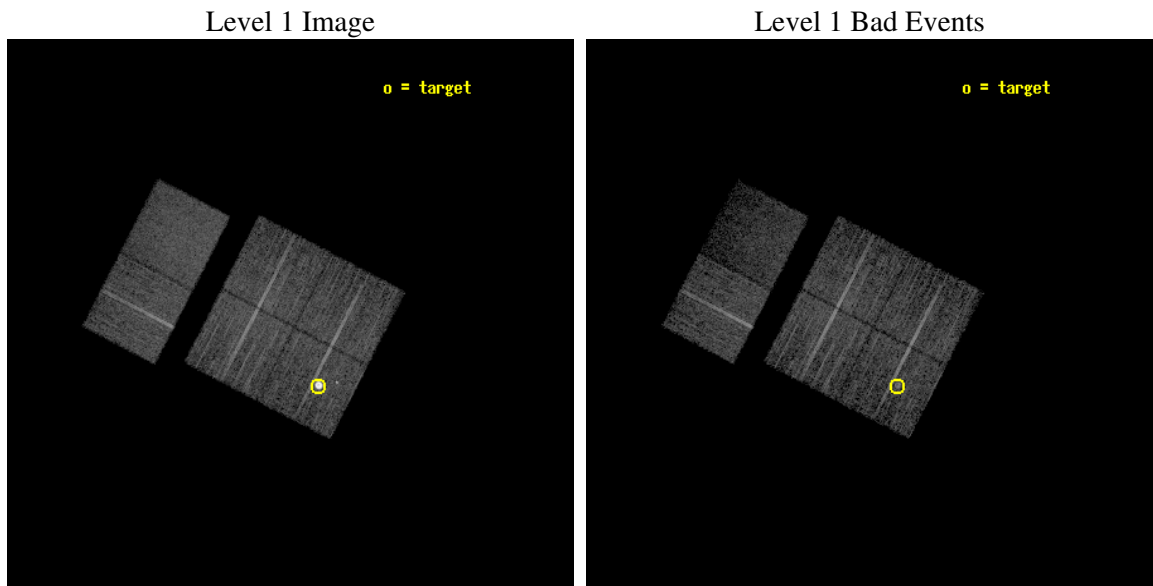
seq_num	590382
obs_id	6055
title	AO6A ACIS-I Calibration Observations of E0102-72
observer	Dr. CXC Calibration
object	E0102-72[I0,-120,4.7,-5.68,0]
dtcycle	0
cycle	P
ra_targ	16.01
dec_targ	-72.032028
ra_nom	16.168109080245
dec_nom	-71.92375305464
roll_nom	297.39250530647
revision	2
ontime	7955.1999703646
livetime	7854.4664382935
ontime0	7955.1999703646
ontime1	7955.1999703646
ontime2	7955.1999703646
ontime3	7955.1999703646
ontime6	7951.9589802027
ontime7	7955.1999703646
l2events	64111



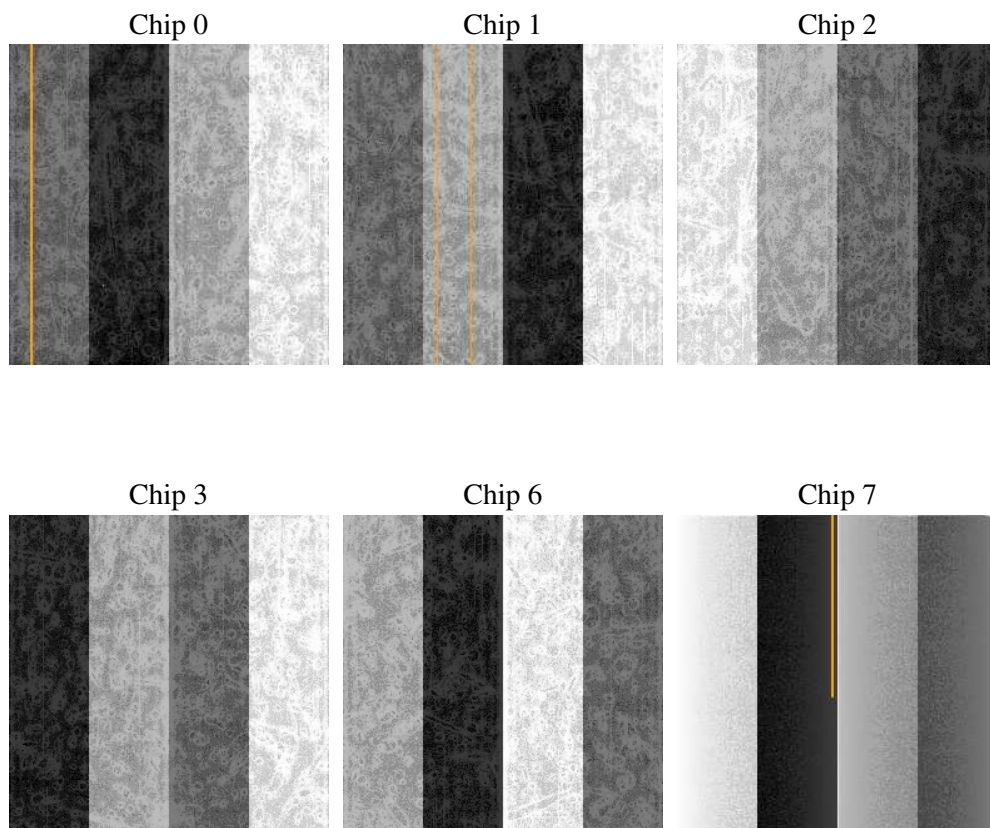
2 OBI

2.1 OBI

2.1.1 Images



2.1.2 Bias



2.1.3 Parameters

obi_num	1
ascdsver	7.6.7.1
caldbver	3.2.1
date	2006-04-08T21:29:44
revision	2

sched_exp_time	8000.000000
ontime	7959.8995685577
ontime0	7959.8995685577
ontime1	7959.8995685577
ontime2	7959.8995685577
ontime3	7959.8995685577
ontime6	7956.6585783958
ontime7	7959.8995685577
l1events	309429

2.1.4 Events

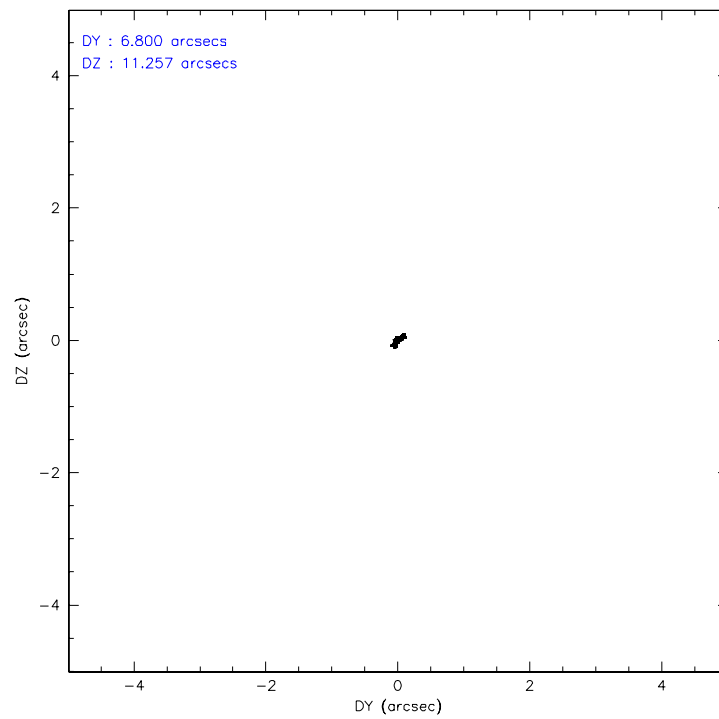
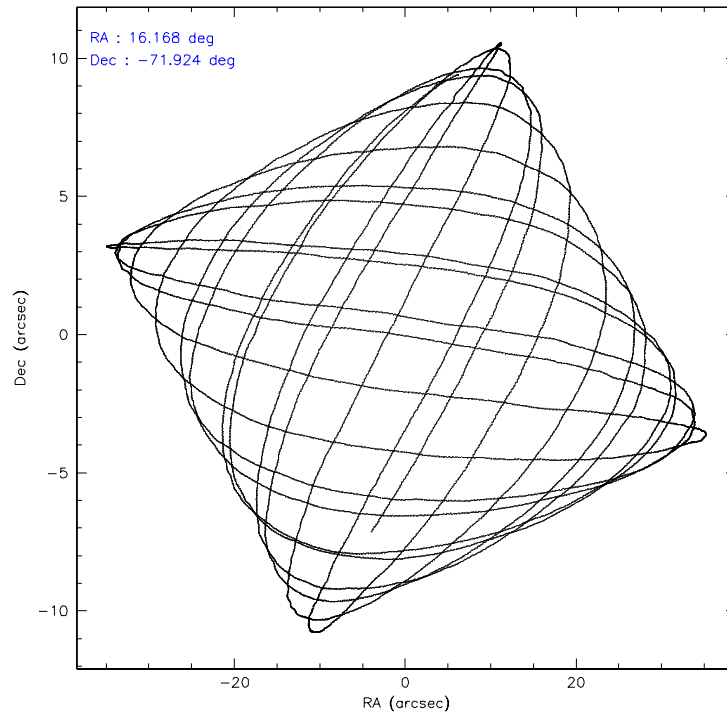
	ccd 0	ccd 1	ccd 2	ccd 3	ccd 6	ccd 7
level 1 events	67316	45992	52129	47330	49632	47030
rejected events	39781	40971	47413	43012	44540	24407
rejected %	59%	89%	90%	90%	89%	51%

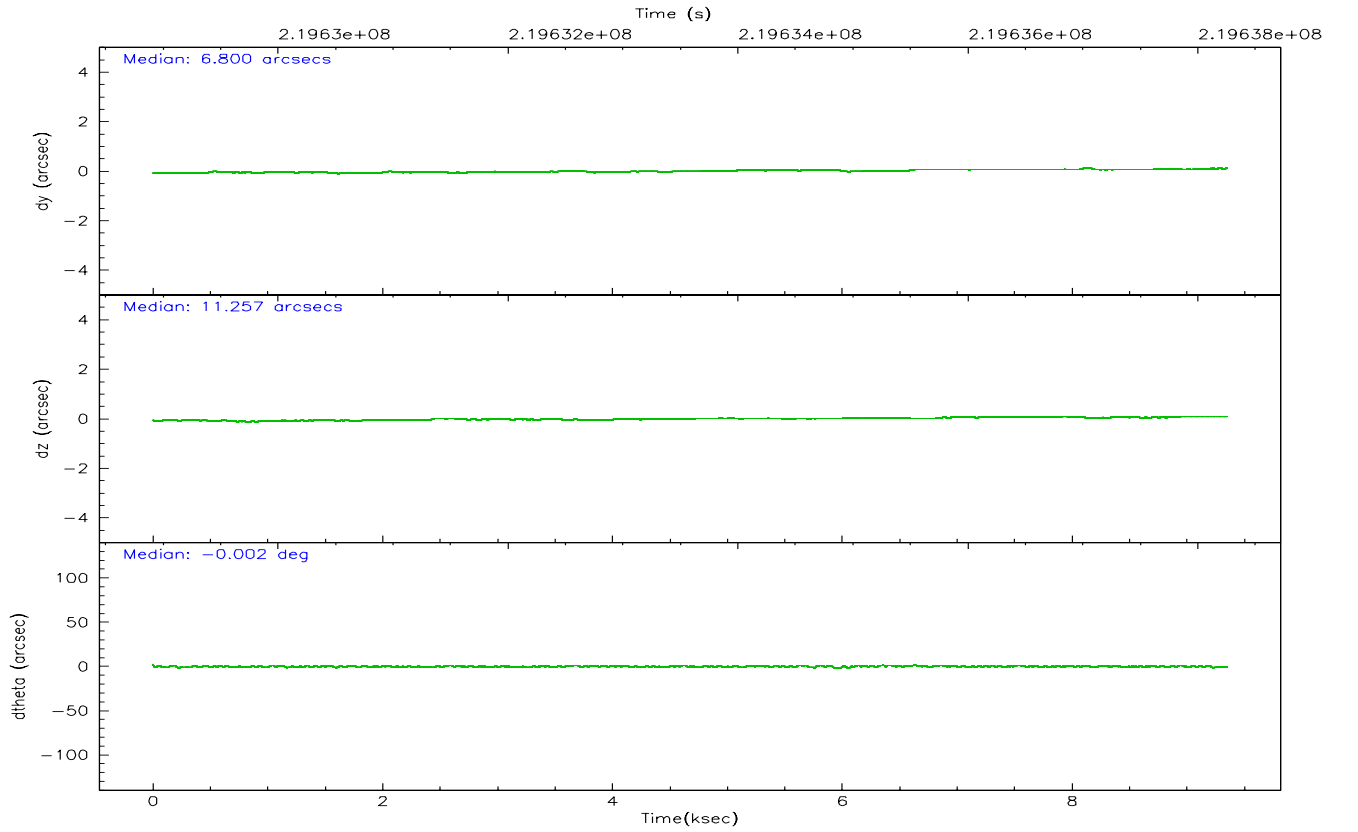
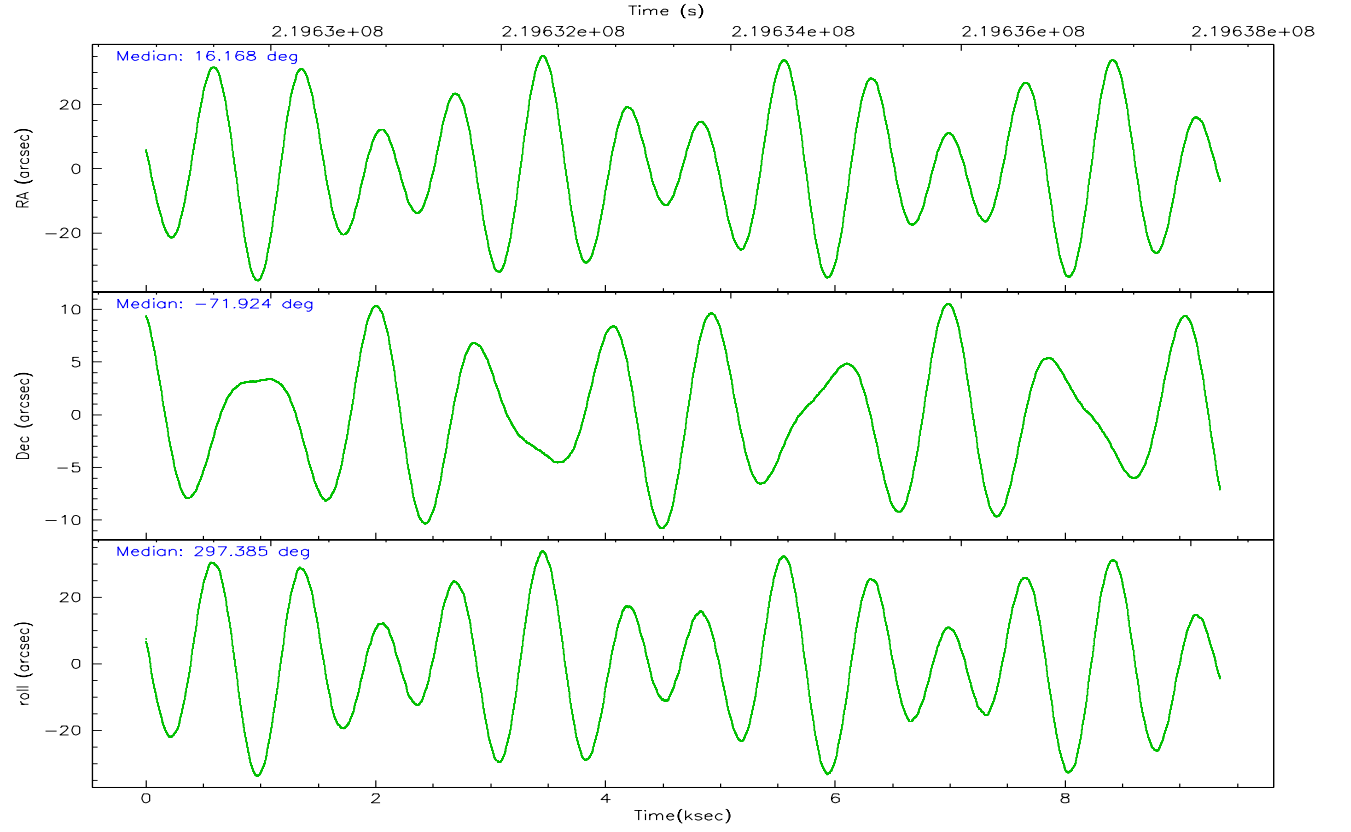
	ccd 0	ccd 1	ccd 2	ccd 3	ccd 6	ccd 7
grade 0 events	21901	1845	1841	1585	1862	1730
	32%	4%	3%	3%	3%	3%
grade 1 events	184	12	35	20	23	31
	0%	0%	0%	0%	0%	0%
grade 2 events	2784	1066	1013	913	1109	5763
	4%	2%	1%	1%	2%	12%
grade 3 events	923	642	520	511	571	1461
	1%	1%	0%	1%	1%	3%
grade 4 events	899	589	556	490	557	1397
	1%	1%	1%	1%	1%	2%
grade 5 events	1482	1553	1322	1573	1717	3599
	2%	3%	2%	3%	3%	7%
grade 6 events	1049	885	789	821	997	12288
	1%	1%	1%	1%	2%	26%
grade 7 events	38094	39400	46053	41417	42796	20761
	56%	85%	88%	87%	86%	44%

2.2 Compared Parameters

Parameter	Planned	Actual	Parameter	Planned	Actual
Instrument	ACIS	ACIS	Obspar format version number	6	6
Detector	ACIS-012367	ACIS-012367	Obspar file type	PREDICTED	ACTUAL
Grating	NONE	NONE	Obspar update status	NONE	UPDATED
Data mode	VFAINT	VFAINT	On-chip summing requested	N	N
Observation mode	POINTING	POINTING	Subarray requested	NONE	NONE
Pointing RA	16.093642	16.16810908024502	Alternating exposures requested	N	N
Pointing Dec	-71.909102	-71.9237530546403	Primary exposure time	0.000000	3.2
Pointing Roll	297.113033	297.3925053064675			
Window start time	215654464.184000	215654464.184000			
Window stop time	220838464.184000	220838464.184000			
SIM focus pos (mm)	-0.782348	-0.7809083437167272			
SIM defocus (mm)	0	0.001439871863259334			
SIM translation stage pos (mm)	-233.592463	-233.5874344608287			
SIM translation stage offset (mm)	0	-0.005018542100998502			
Observation start time	219630262.184000	219628716.24112			
Observation start date	2004-12-17T00:23:18	2004-12-16T23:58:36			
Observation end time	219638262.184000	219639549.4666			
Observation end date	2004-12-17T02:36:38	2004-12-17T02:59:09			
Read mode	TIMED	TIMED			

2.3 Aspect



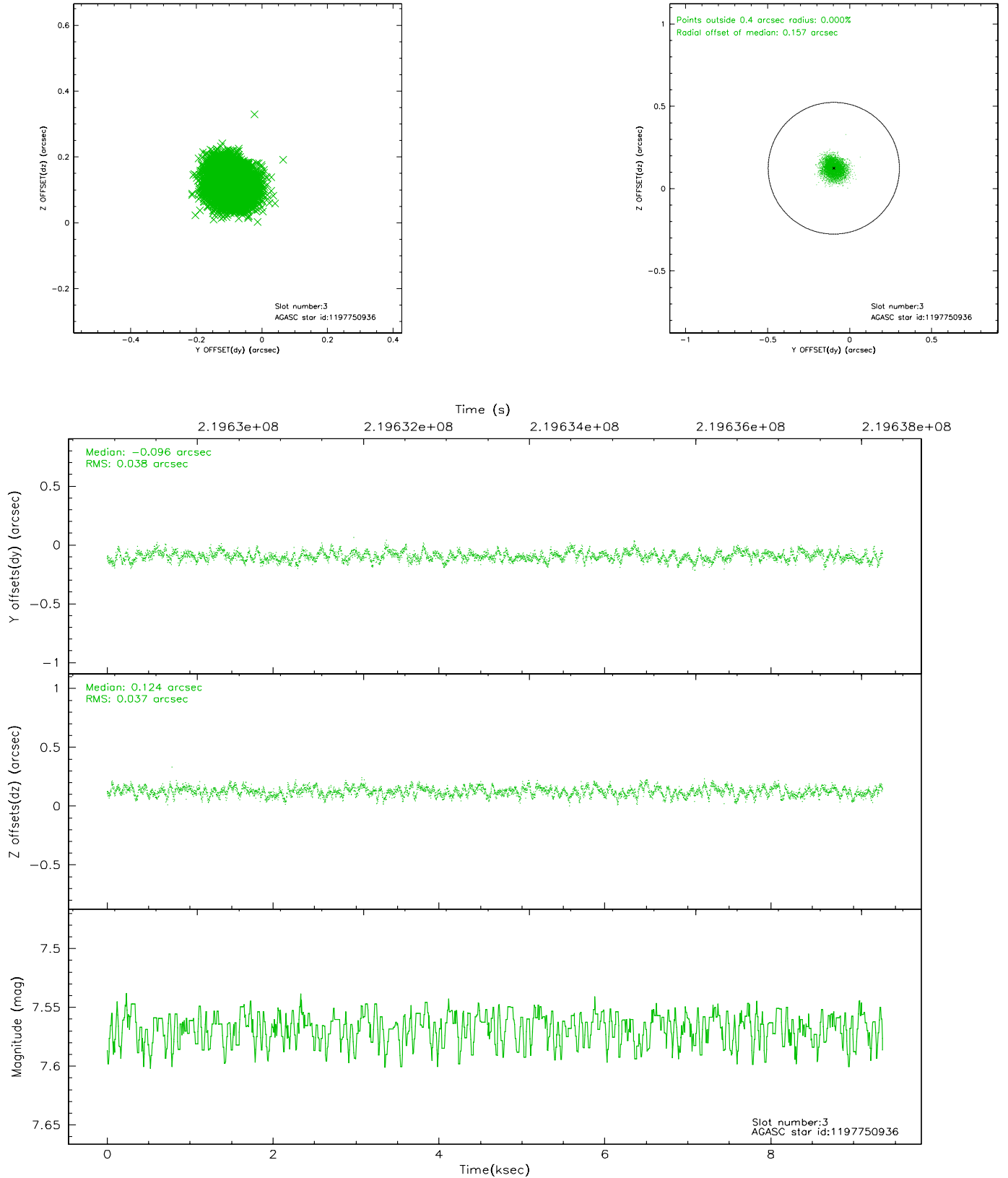


Slot Statistics

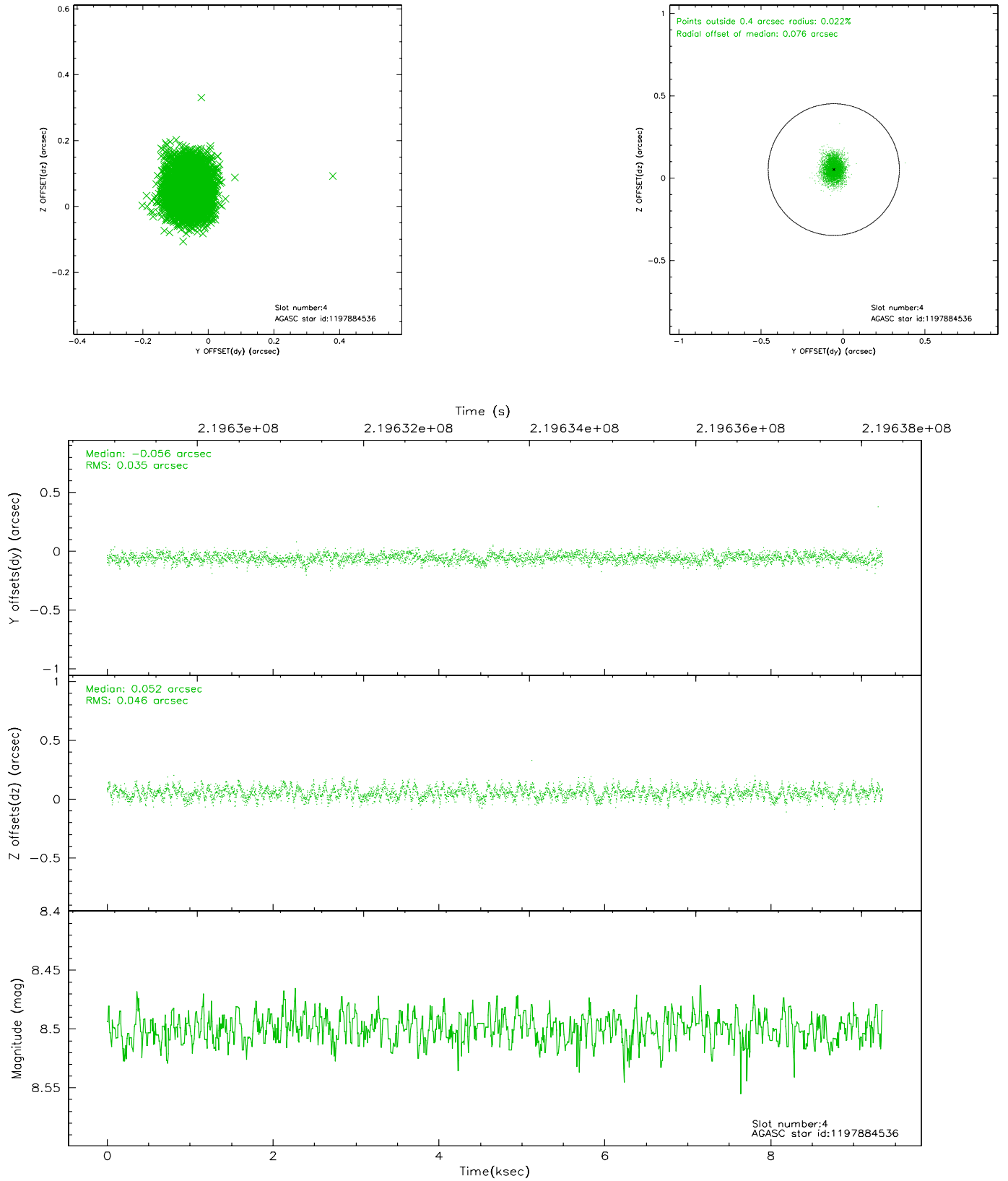
slot	status	id	mag	n_pts	med_dy	med_dz	dr1	dr2	ra	dec	mean_y	mean_z
0	FID	ACIS-I-1	7.24	2281	-0.017	-0.046	0.008	0.014	0.000000	0.000000	932.86	-834.81
1	FID	ACIS-I-4	7.18	2281	0.057	0.064	0.008	0.013	0.000000	0.000000	2153.31	1064.81
2	FID	ACIS-I-5	7.22	2281	-0.139	0.053	0.006	0.012	0.000000	0.000000	-1814.51	1063.33
3	GUIDE	1197750936	7.57	4562	-0.096	0.124	0.057	0.090	15.387940	-71.549550	-1513.91	-128.02
4	GUIDE	1197884536	8.50	4561	-0.056	0.052	0.061	0.100	17.160729	-71.835289	318.48	1182.28
5	GUIDE	1197884712	8.31	4562	0.102	0.009	0.067	0.109	16.087398	-72.252690	1098.50	-569.40
6	GUIDE	1197885328	7.23	4562	0.001	-0.128	0.052	0.083	16.283090	-71.733943	-463.01	477.75
7	GUIDE	1198189696	7.40	4560	0.053	-0.055	0.062	0.105	15.223750	-72.697522	2108.67	-2125.34

2.4 Star Slots

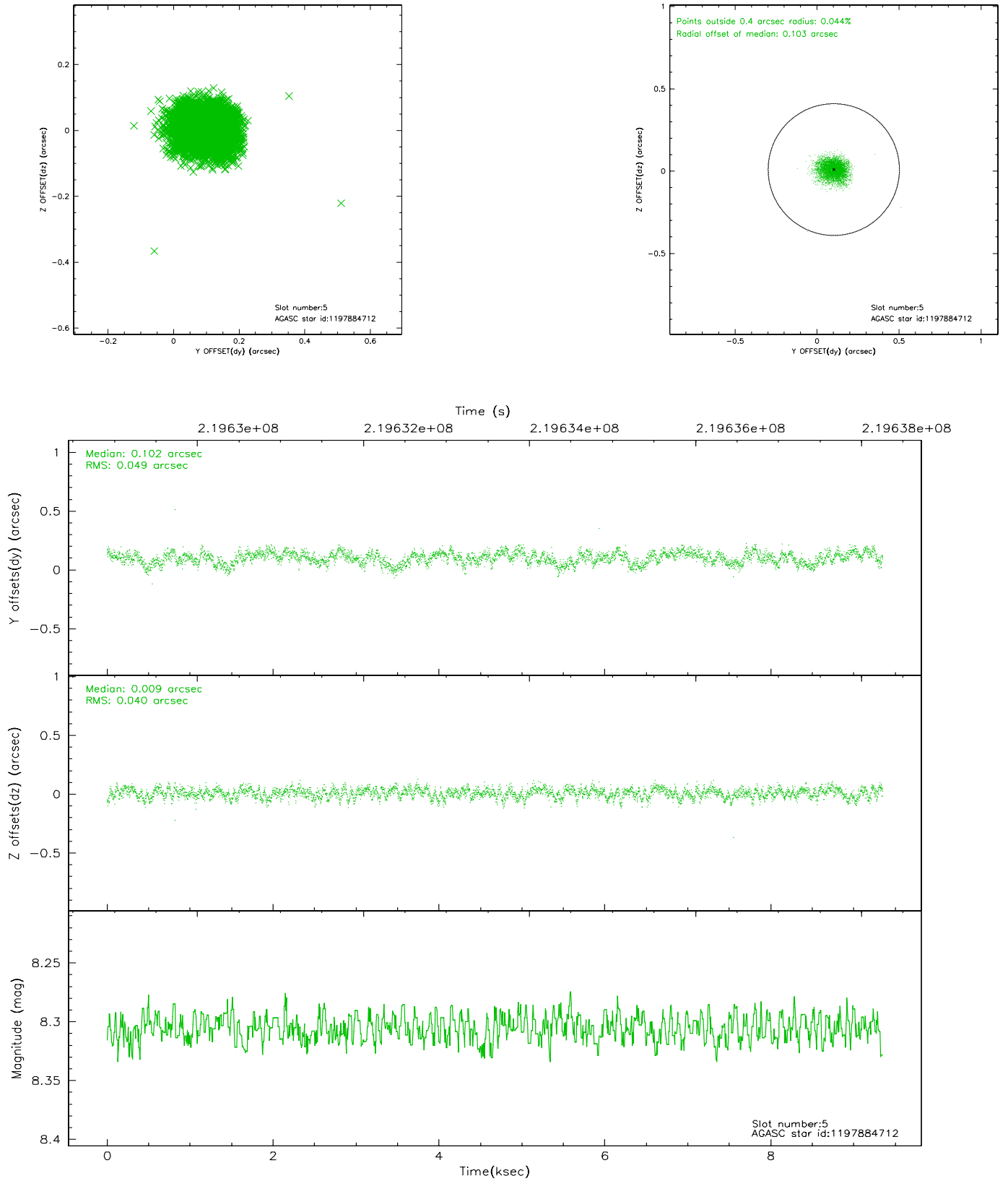
2.4.1 Slot 3



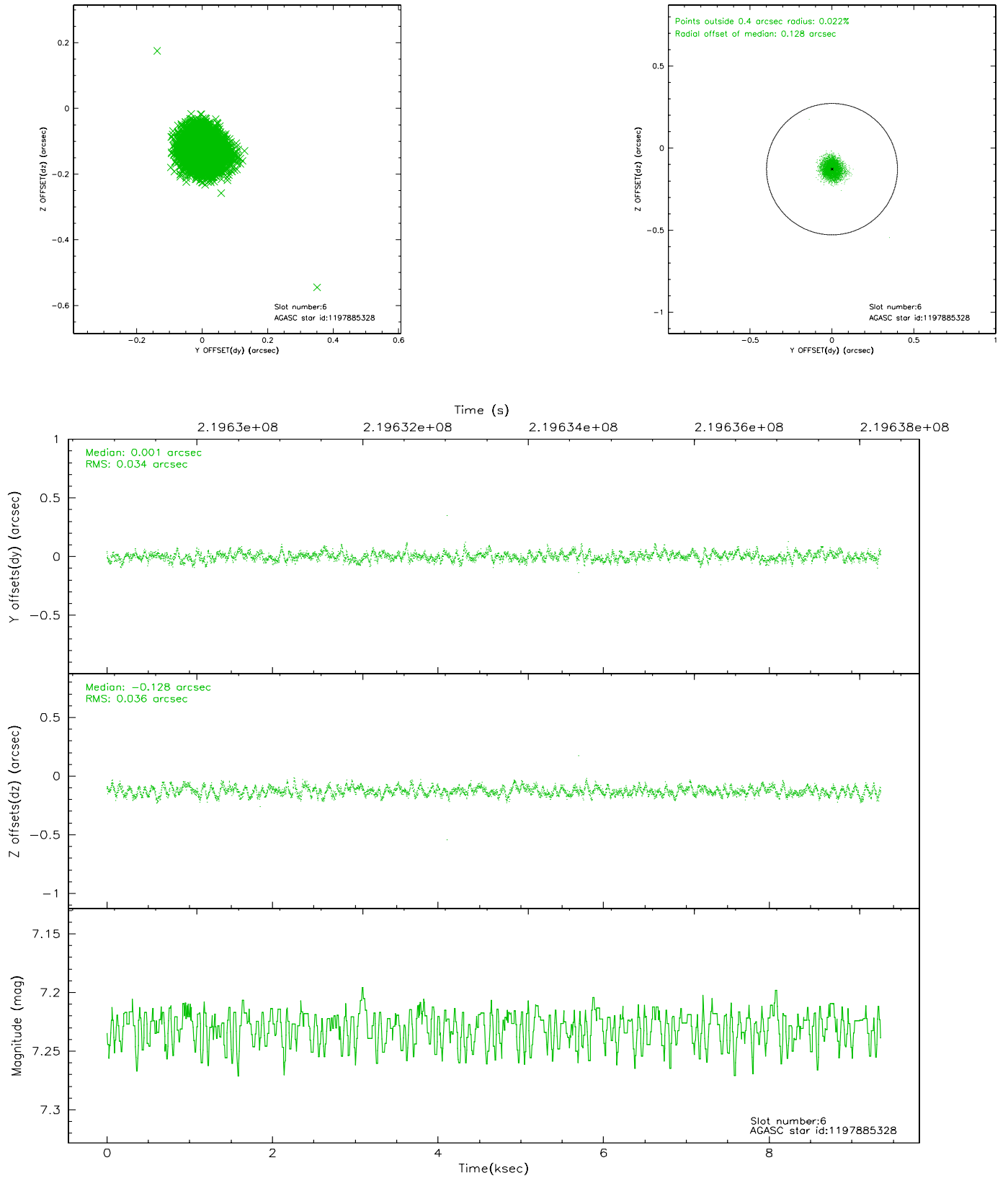
2.4.2 Slot 4



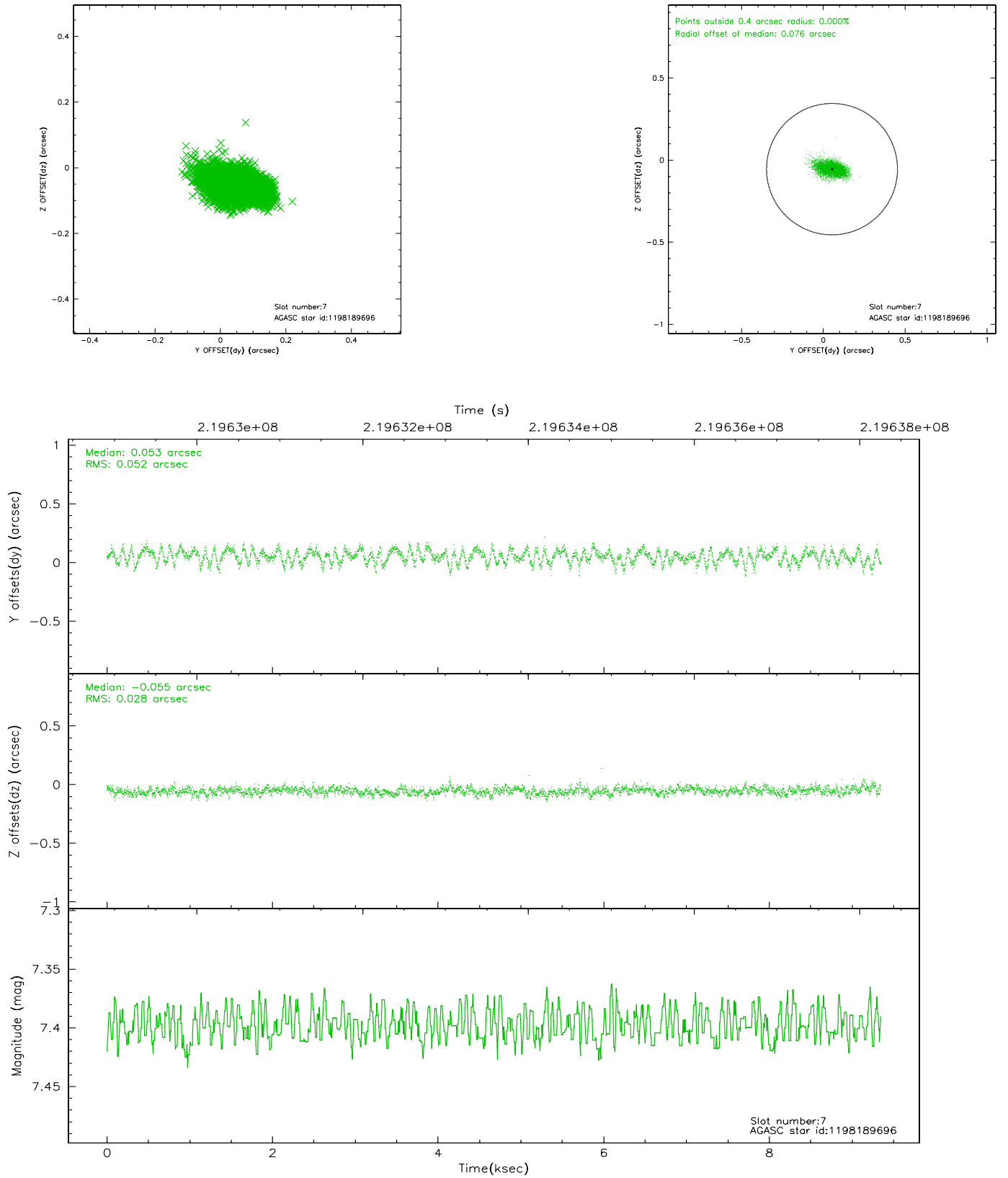
2.4.3 Slot 5



2.4.4 Slot 6

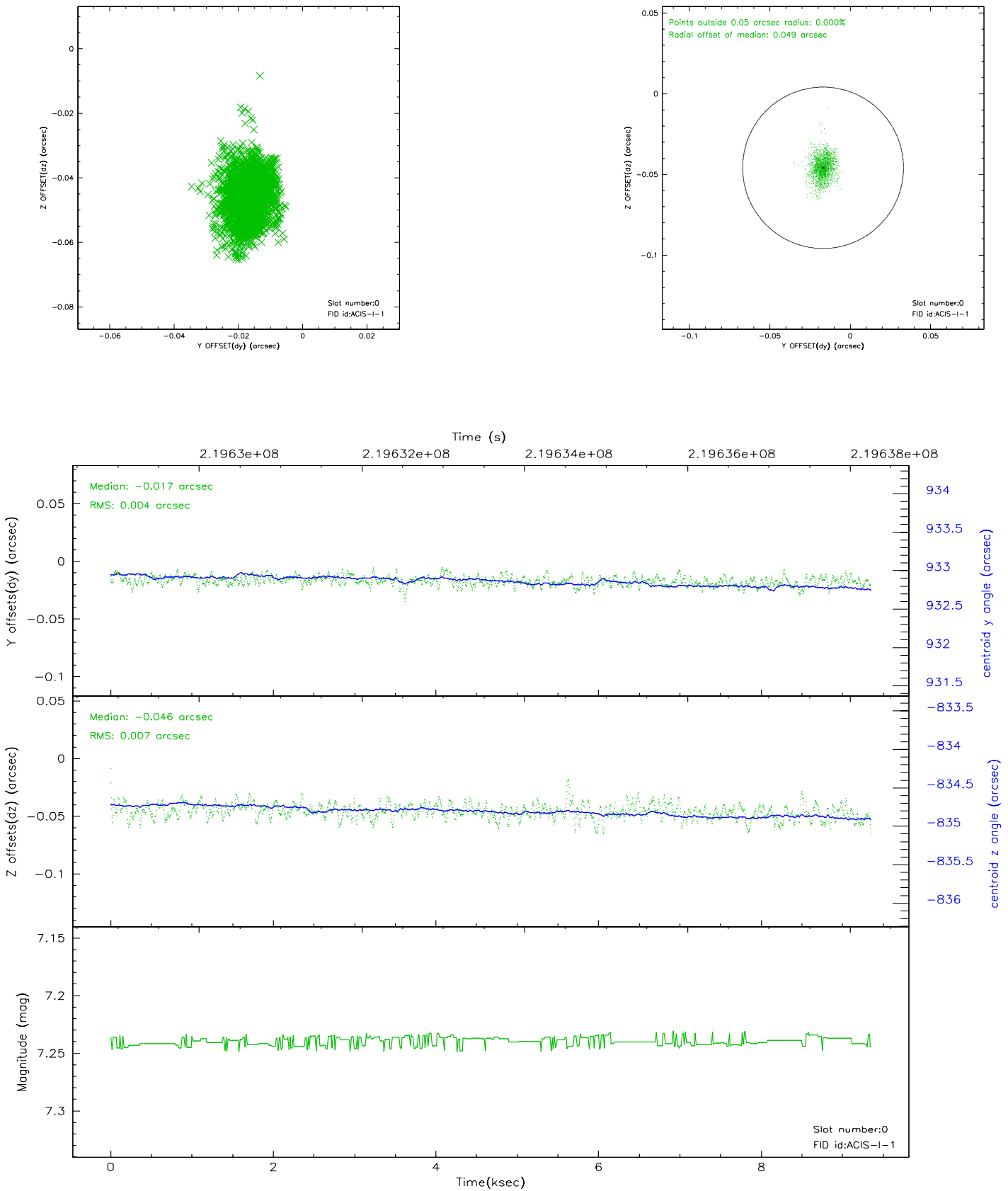


2.4.5 Slot 7

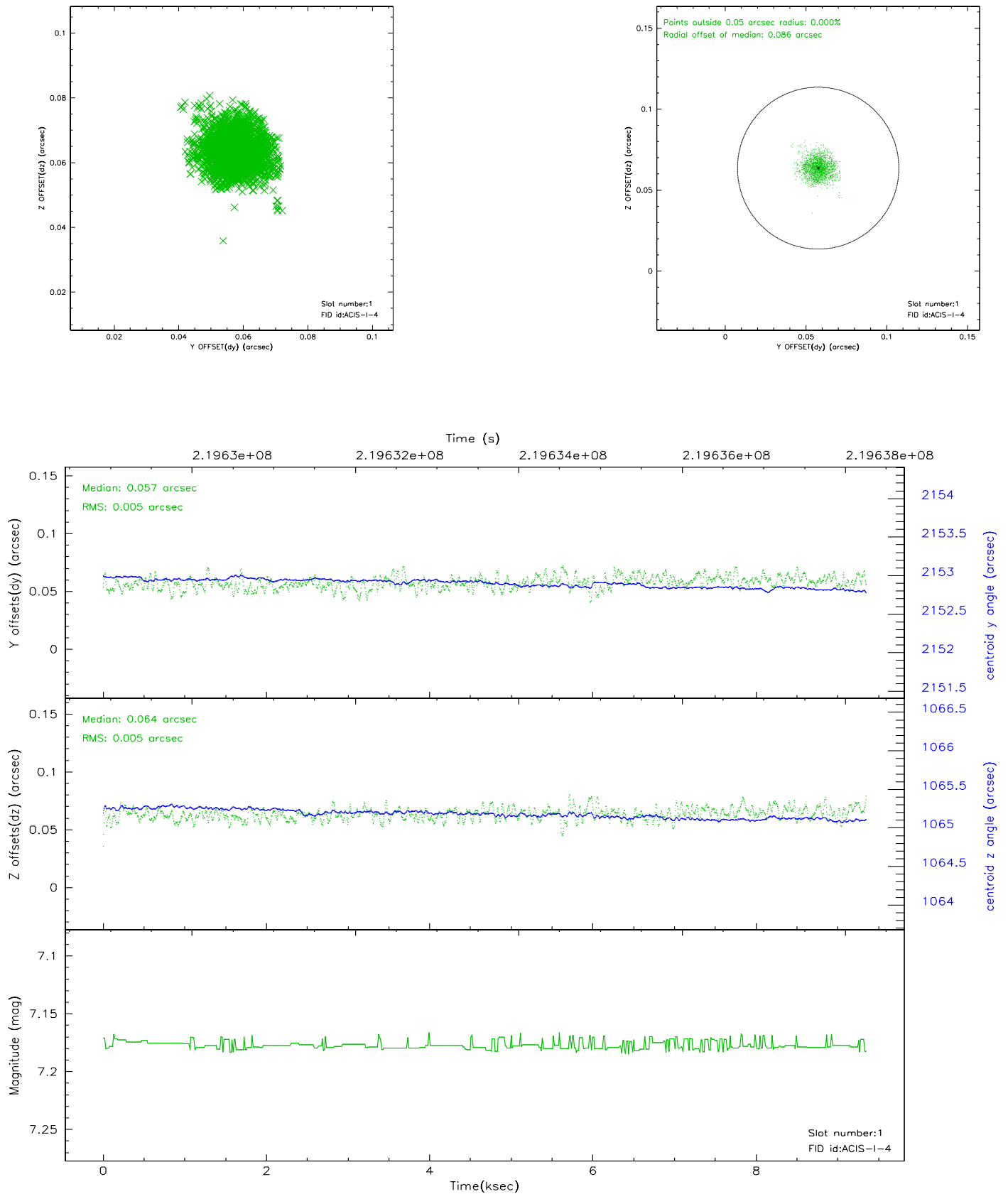


2.5 FID Slots

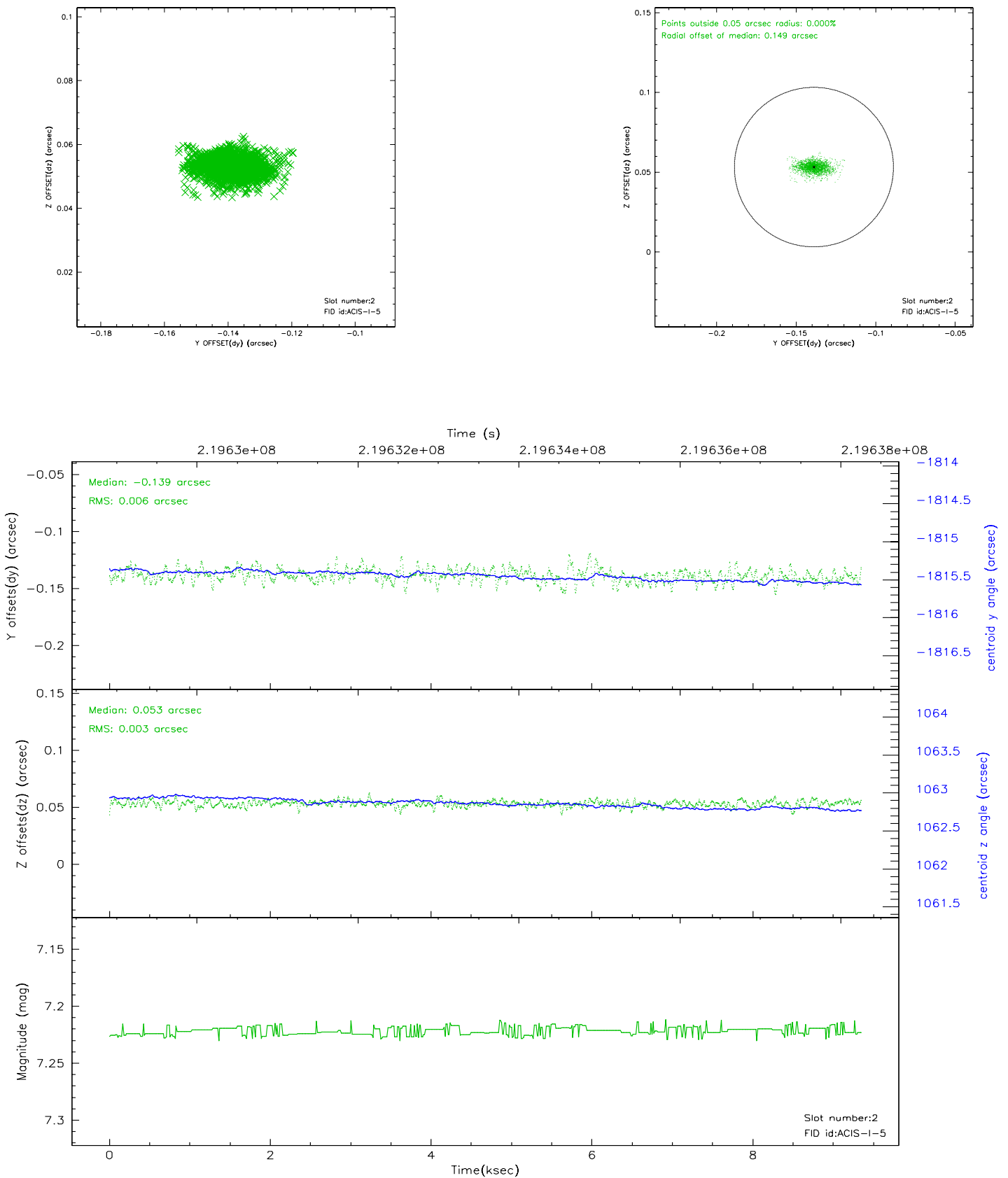
2.5.1 Slot 0



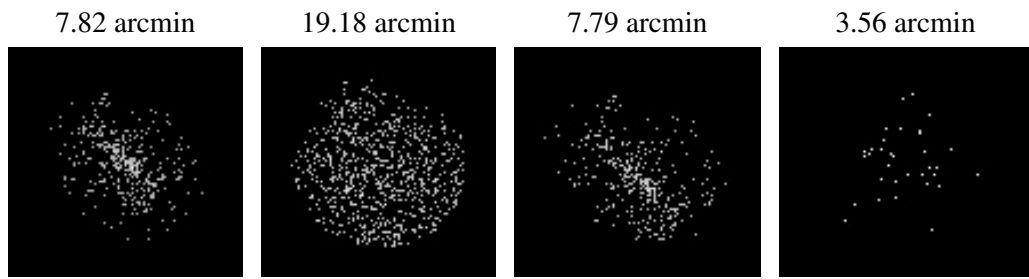
2.5.2 Slot 1



2.5.3 Slot 2



3 Point Sources



A Summary

A.1 Status

V&V Scientist	Beth Sundheim
V&V Date (YYYY-MM-DD)	2006.04.10
V&V Edition	1
V&V Disposition and Status	OK
V&V Charge Time	7.955199

A.2 Comments

Window constraint satisfied.