

V&V Reference Report

L2 ASCDS Version : 8.5.1

Observation 6032 - L2 Version 3
Chandra X-Ray Center

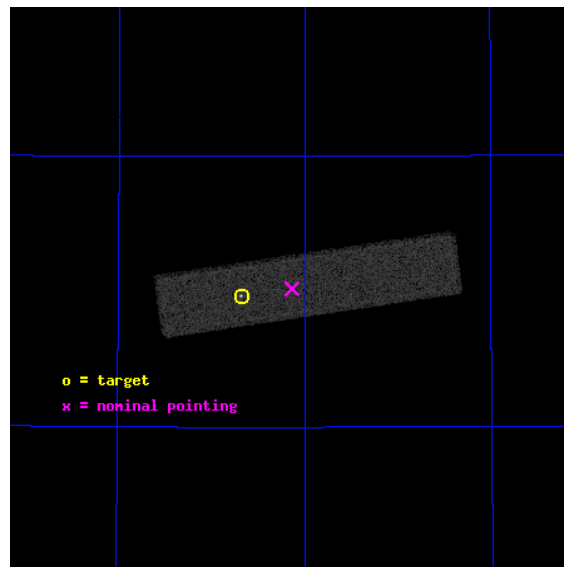
L2 Processing Date : Dec 18 2012

Contents

1	Front	2
2	OBI	3
2.1	OBI	3
2.1.1	Images	3
2.1.2	Parameters	4
2.1.3	Events	4
2.2	Compared Parameters	5
2.3	Aspect	6
2.4	Star Slots	9
2.4.1	Slot 3	9
2.4.2	Slot 4	10
2.4.3	Slot 5	11
2.4.4	Slot 6	12
2.4.5	Slot 7	13
2.5	FID Slots	14
2.5.1	Slot 0	14
2.5.2	Slot 1	15
2.5.3	Slot 2	16
A	Summary	17
A.1	Status	17
A.2	Comments	17

1 Front

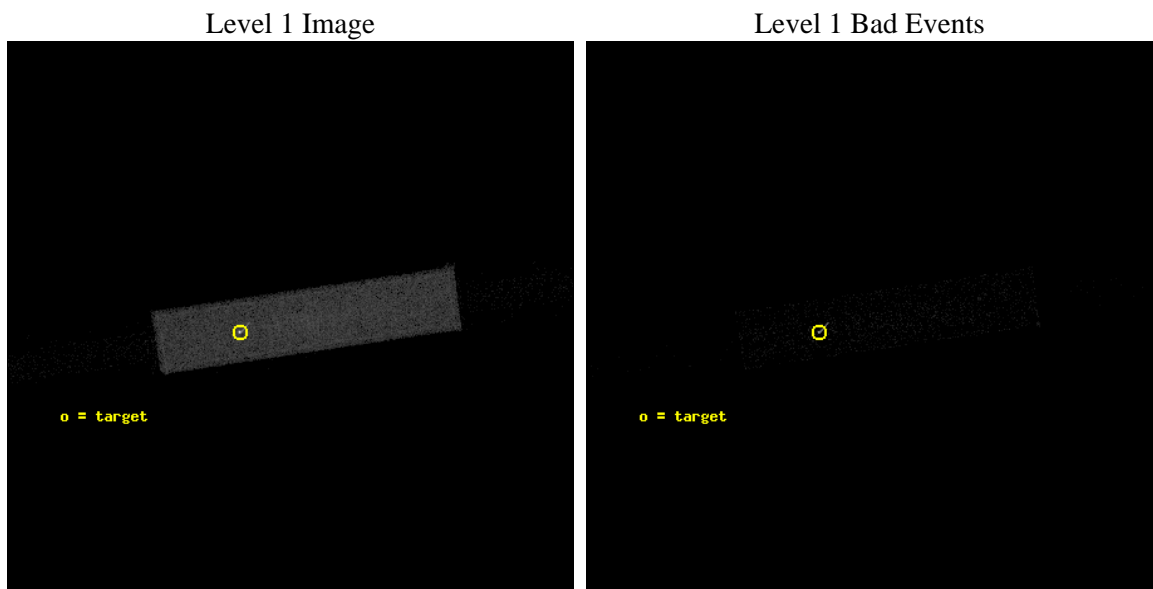
seq_num	290524	Sequence number
obs_id	6032	Observation id
title	AO6A Calibration Observations to Monitor the Spatial Variations in the HRC-S Gain	Proposal title
observer	Dr. CXC Calibration	Principal investigator
object	ArLac	Source name
ra_targ	332.17	Observer's specified target RA [deg]
dec_targ	45.742306	Observer's specified target Dec [deg]
ra_nom	332.03405059636	Nominal RA [deg]
dec_nom	45.755530197815	Nominal Dec [deg]
roll_nom	351.49680219776	Nominal Roll [deg]
revision	3	Processing version of data
ontime	1155.4313022792	[s]
livetime	1148.3100912205	Ontime multiplied by DTCOR
l2events	50703	Number of level 2 events



2 OBI

2.1 OBI

2.1.1 Images



2.1.2 Parameters

obi_num	0	Obi number	sched_exp_time	1000.000000	[s] Scheduled observation exposure time
ascdsver	8.5.1	Processing system revision	ontime	1155.4313022792	[s]
caldsver	4.5.5	 	l1events	81296	Number of level 1 events
date	2012-12-17T04:20:04	Date and time of file creation			
revision	3	Processing version of data			

2.1.3 Events

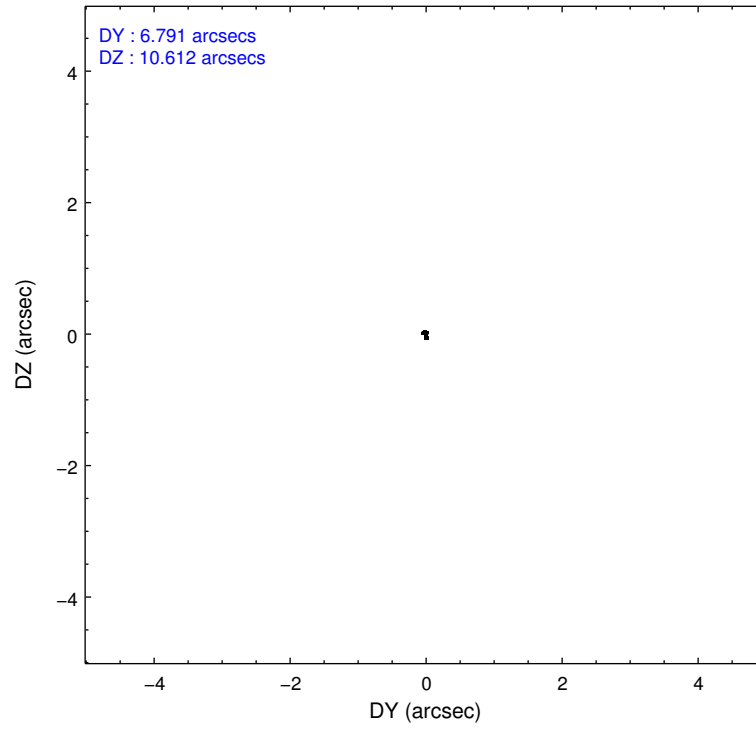
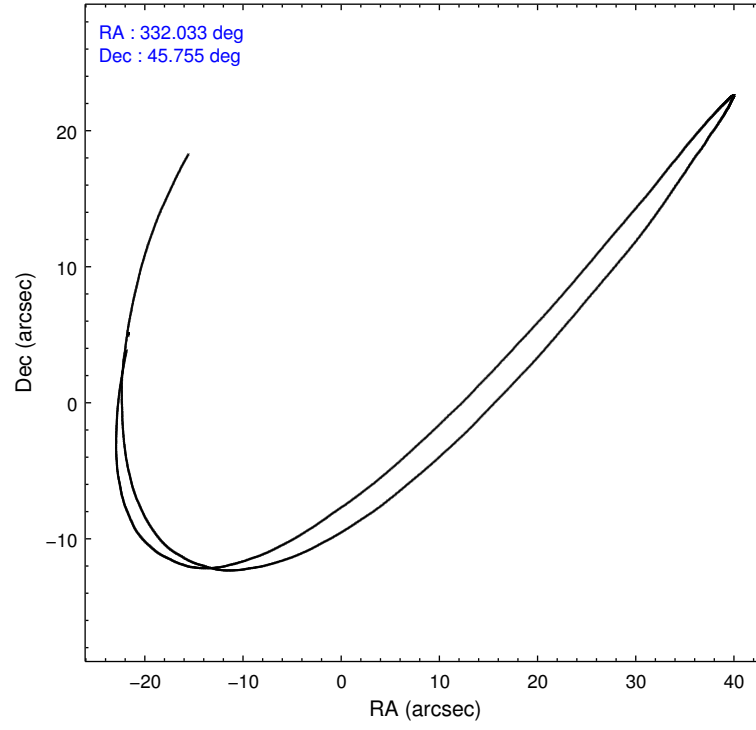
Level 1 Events

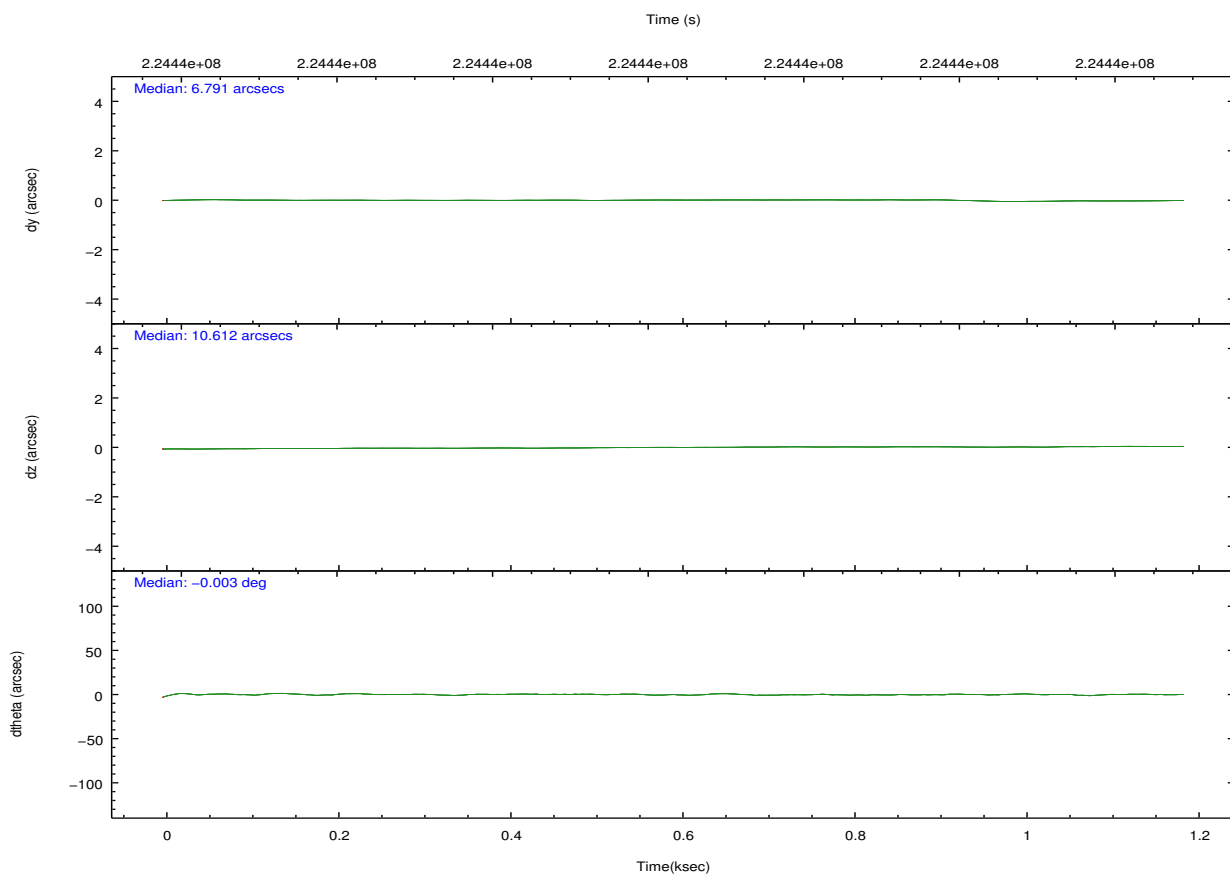
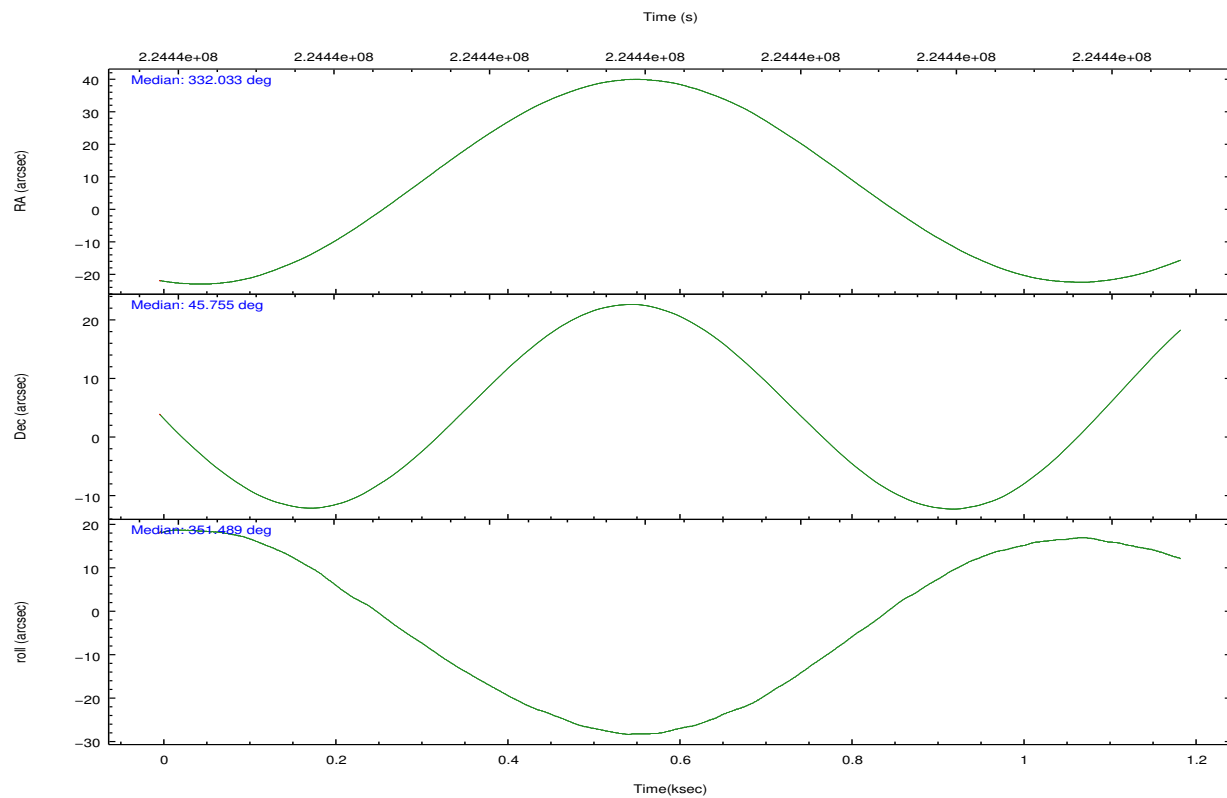
	segment 1	segment 2	segment 3
level 1 events	656	79960	680
rejected events	656	18287	680
rejected %	100%	22%	100%

2.2 Compared Parameters

Parameter	Planned	Actual	Parameter	Planned	Actual
Instrument	HRC	HRC	Obspar format version number	7	7
Detector	HRC-S	HRC-S	Obspar file type	PREDICTED	ACTUAL
Grating	NONE	NONE	Obspar update status	NONE	UPDATED
Data mode	OBSERVING	OBSERVING			
Observation mode	POINTING	POINTING			
[deg] Pointing RA	331.997575	332.0340505963578			
[deg] Pointing Dec	45.744671	45.75553019781482			
[deg] Pointing Roll	351.455611	351.4968021977563			
[mm] SIM focus pos	-1.429586	-1.428180813131781			
[mm] SIM defocus	0.1037507710433287	0.1051558262725154			
[mm] SIM translation stage pos	250.455976	250.466033080201			
[mm] SIM translation stage offset	0	-0.01005468664627074			
[s] Observation start time (MET)	224438823.184000	224438446.95812			
Observation start date	2005-02-10T16:05:59	2005-02-10T16:00:46			
[s] Observation end time (MET)	224439823.184000	224439956.78319			
Observation end date	2005-02-10T16:22:39	2005-02-10T16:25:56			

2.3 Aspect



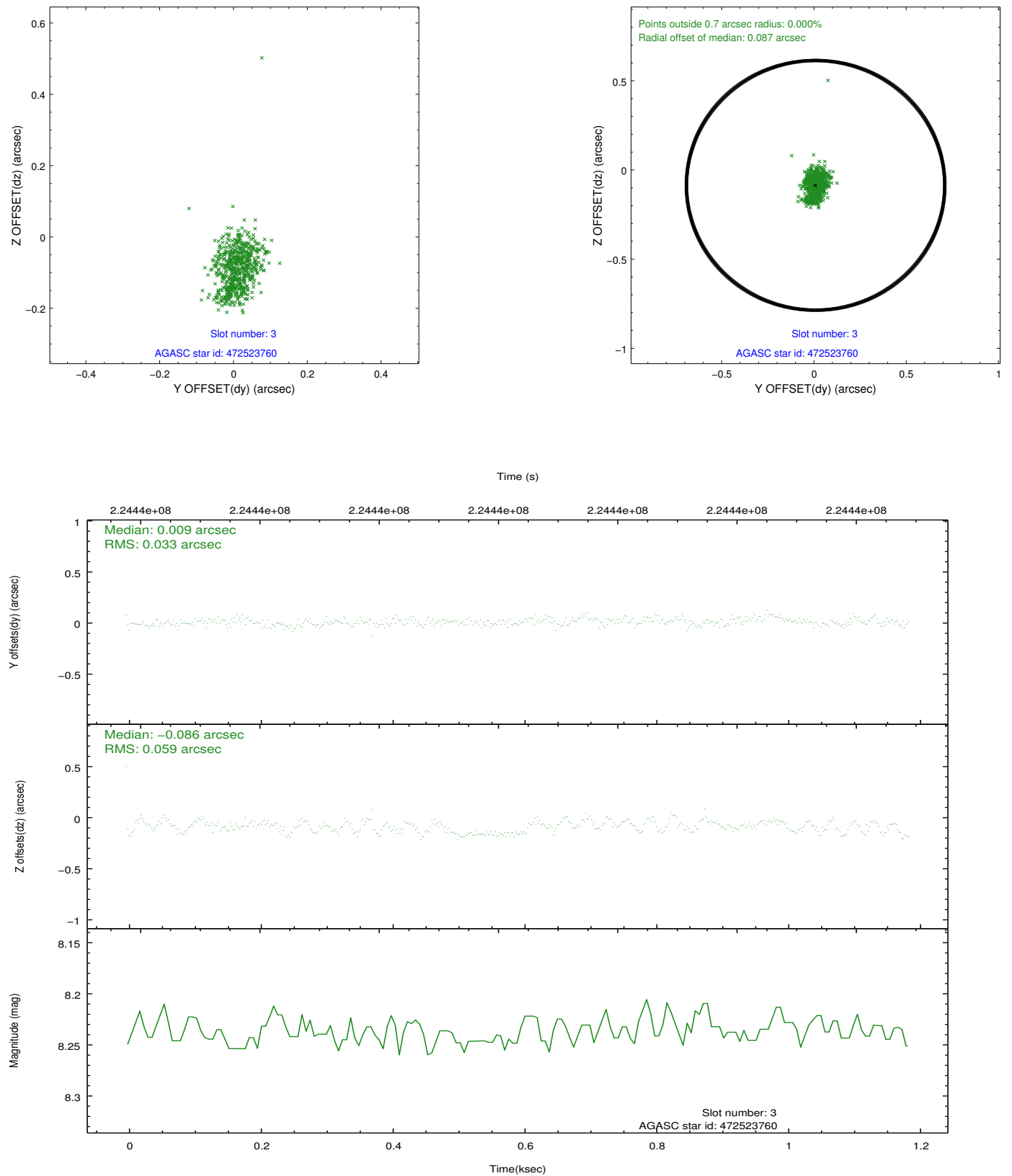


Slot Statistics

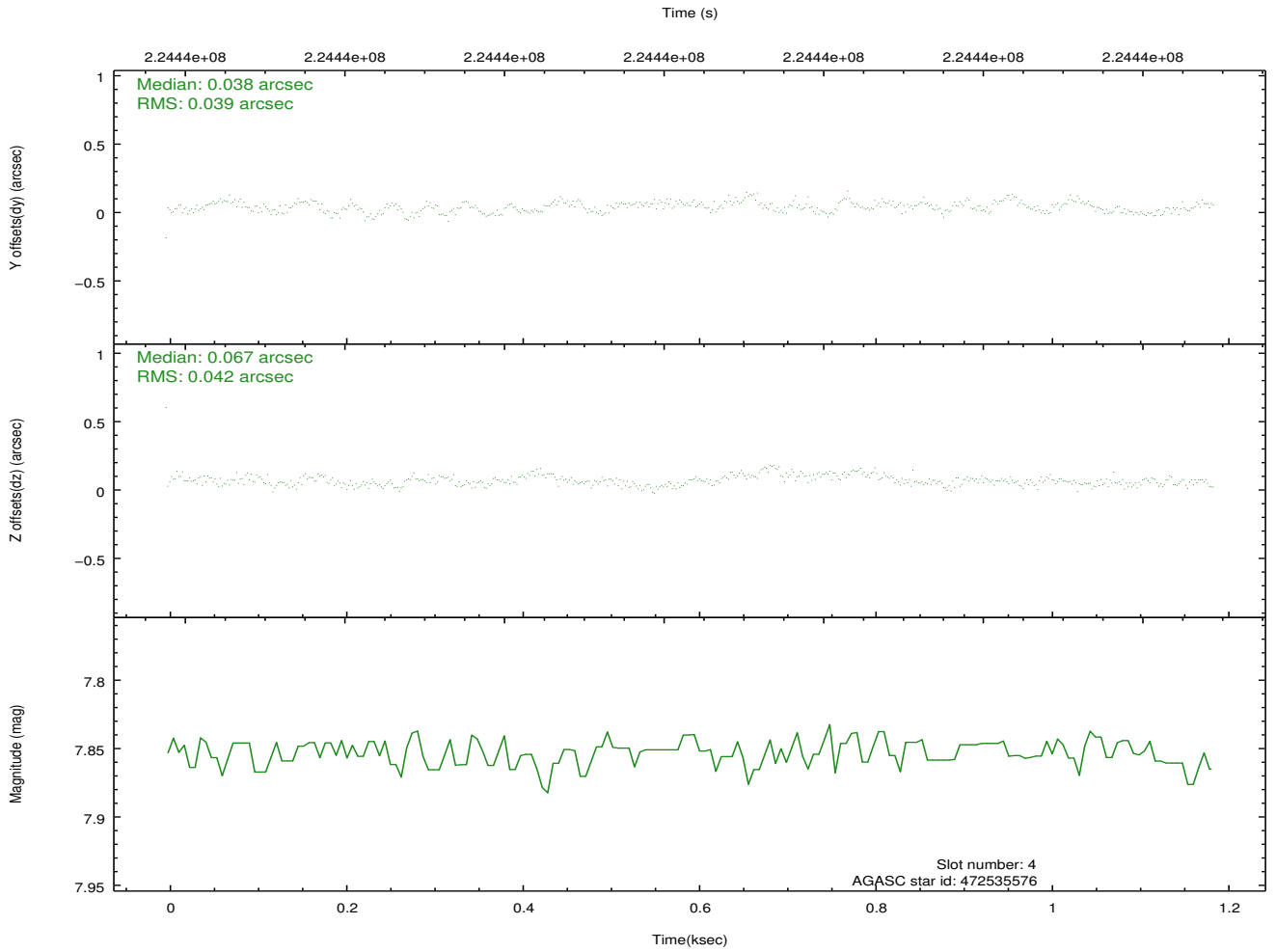
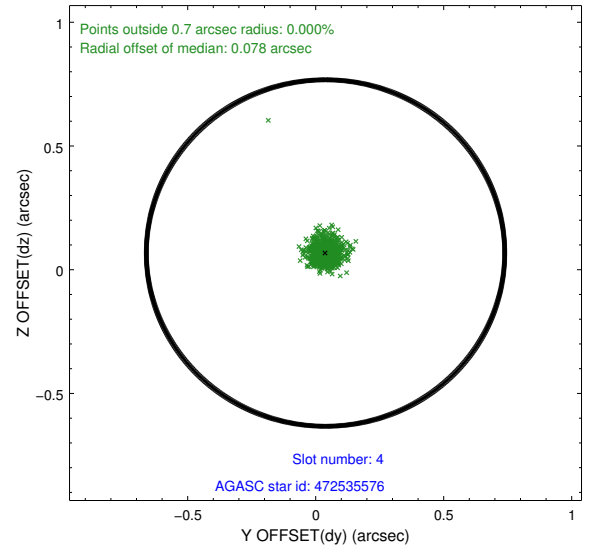
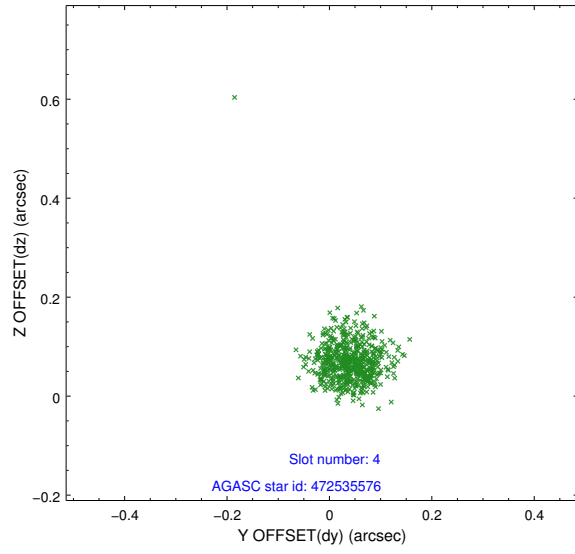
slot	status	id	mag	n_pts	med_dy	med_dz	dr1	dr2	ra	dec	mean_y	mean_z
0	FID	HRC-S-1	7.03	290	0.114	-0.183	0.007	0.011	0.000000	0.000000	-1160.95	-459.31
1	FID	HRC-S-2	7.02	290	0.185	-0.117	0.005	0.009	0.000000	0.000000	1234.80	-453.50
2	FID	HRC-S-3	7.04	290	0.092	-0.002	0.006	0.010	0.000000	0.000000	-1159.42	568.84
3	GUIDE	472523760	8.24	580	0.009	-0.086	0.068	0.105	331.645363	45.403260	-696.16	-1342.03
4	GUIDE	472535576	7.85	580	0.038	0.067	0.056	0.089	331.438373	46.291802	-1668.71	1747.48
5	GUIDE	472536328	8.13	580	-0.001	-0.007	0.066	0.123	331.496671	46.454831	-1610.53	2354.27
6	GUIDE	472665256	9.01	580	-0.027	0.034	0.103	0.198	332.808125	46.195041	1753.68	1921.96
7	GUIDE	472527720	6.99	579	-0.009	-0.017	0.074	0.109	331.460205	45.112509	-1007.61	-2441.71

2.4 Star Slots

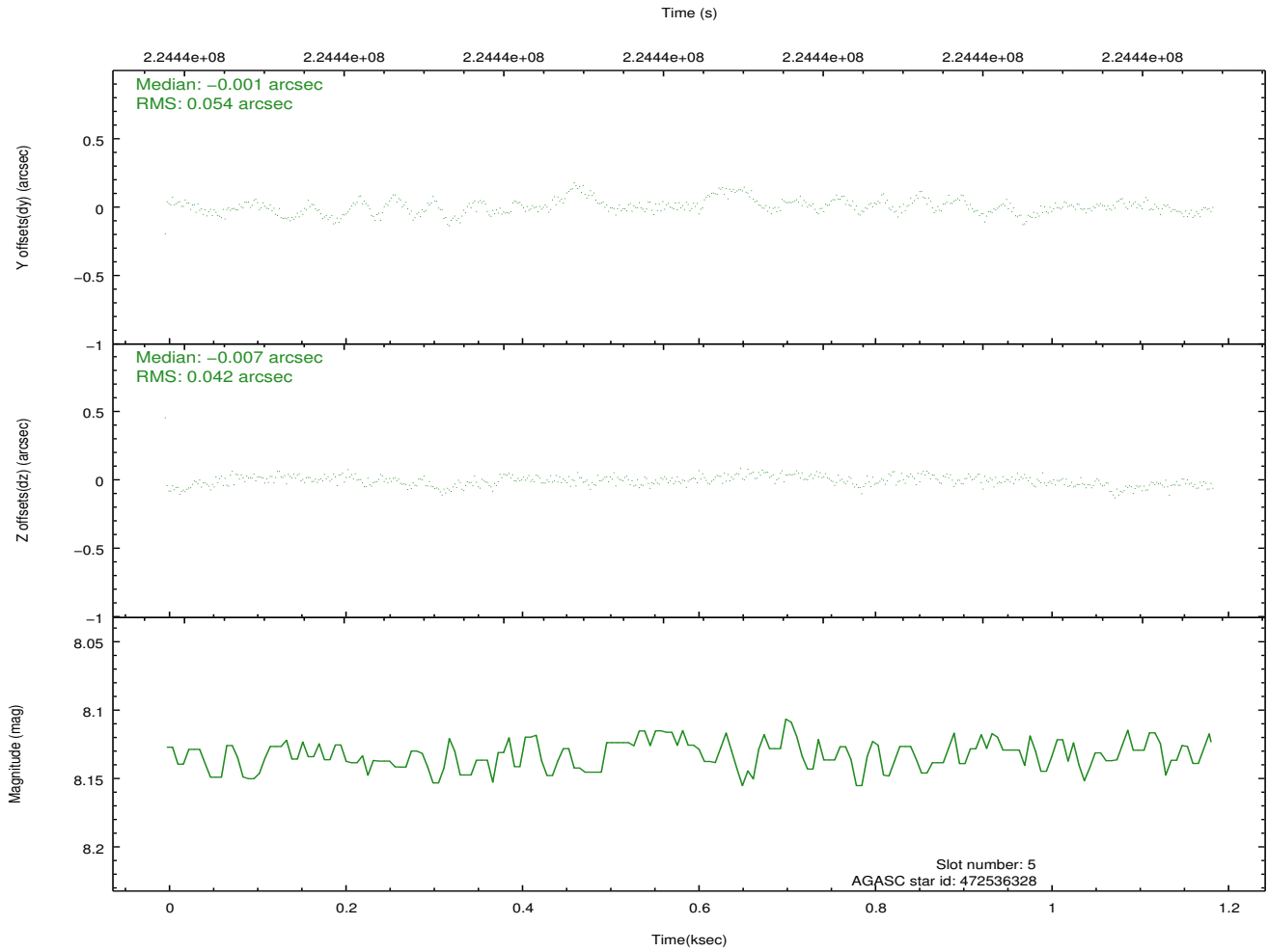
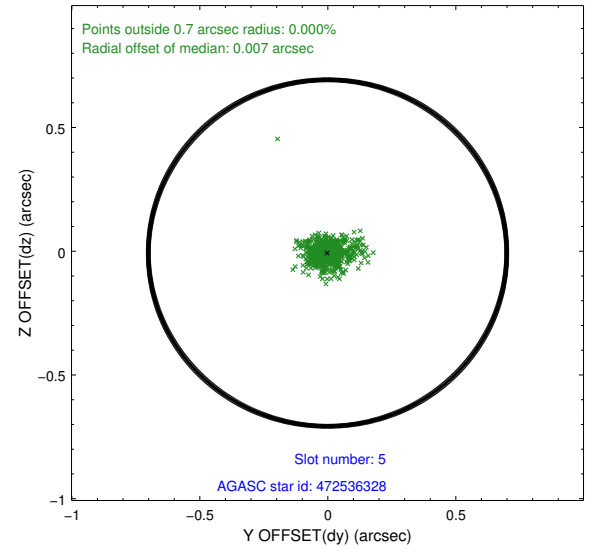
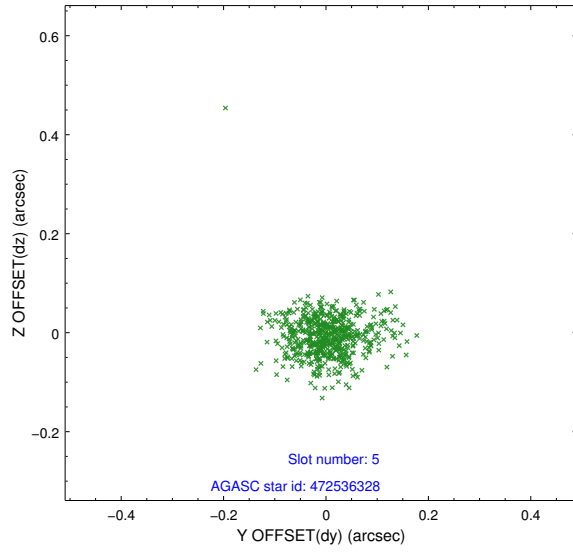
2.4.1 Slot 3



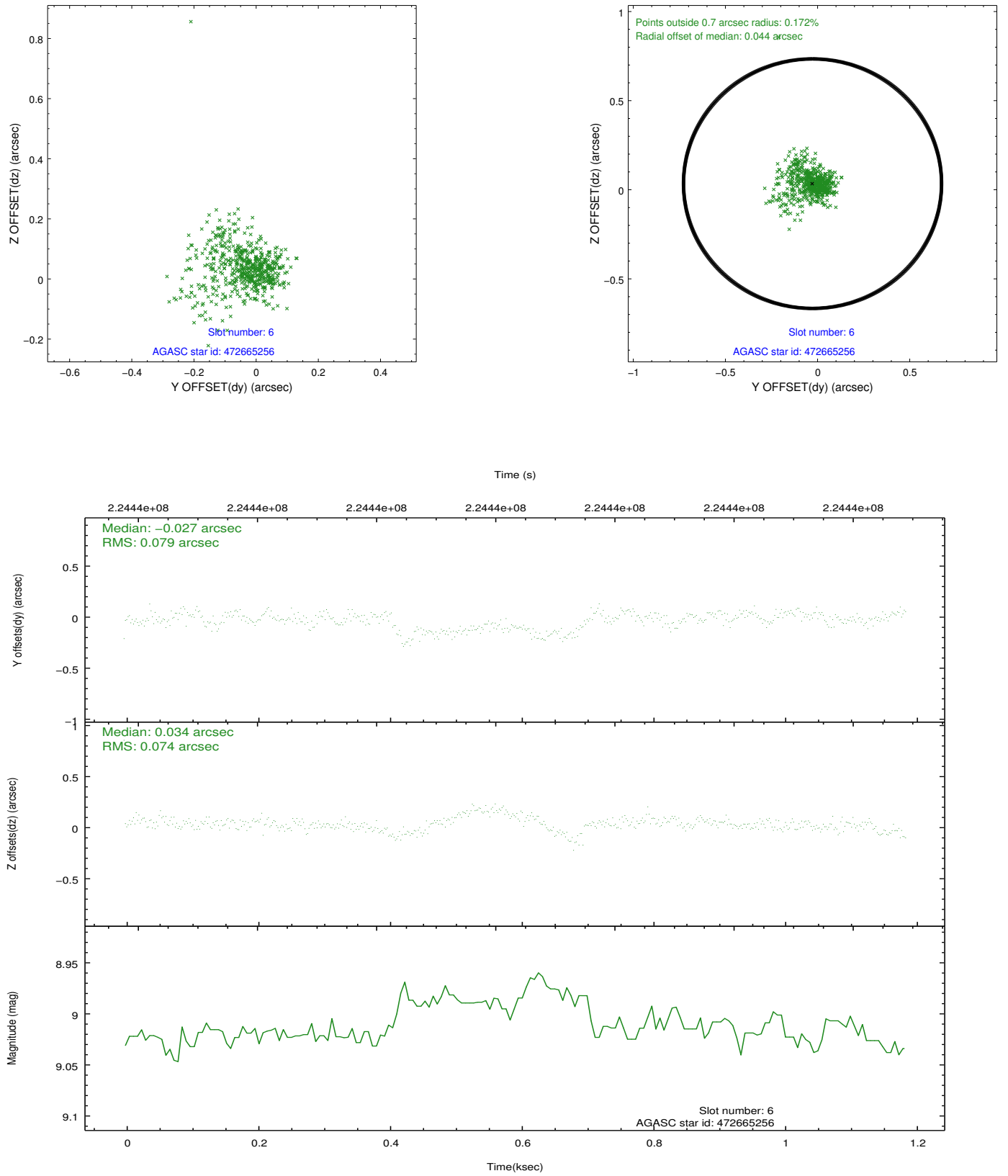
2.4.2 Slot 4



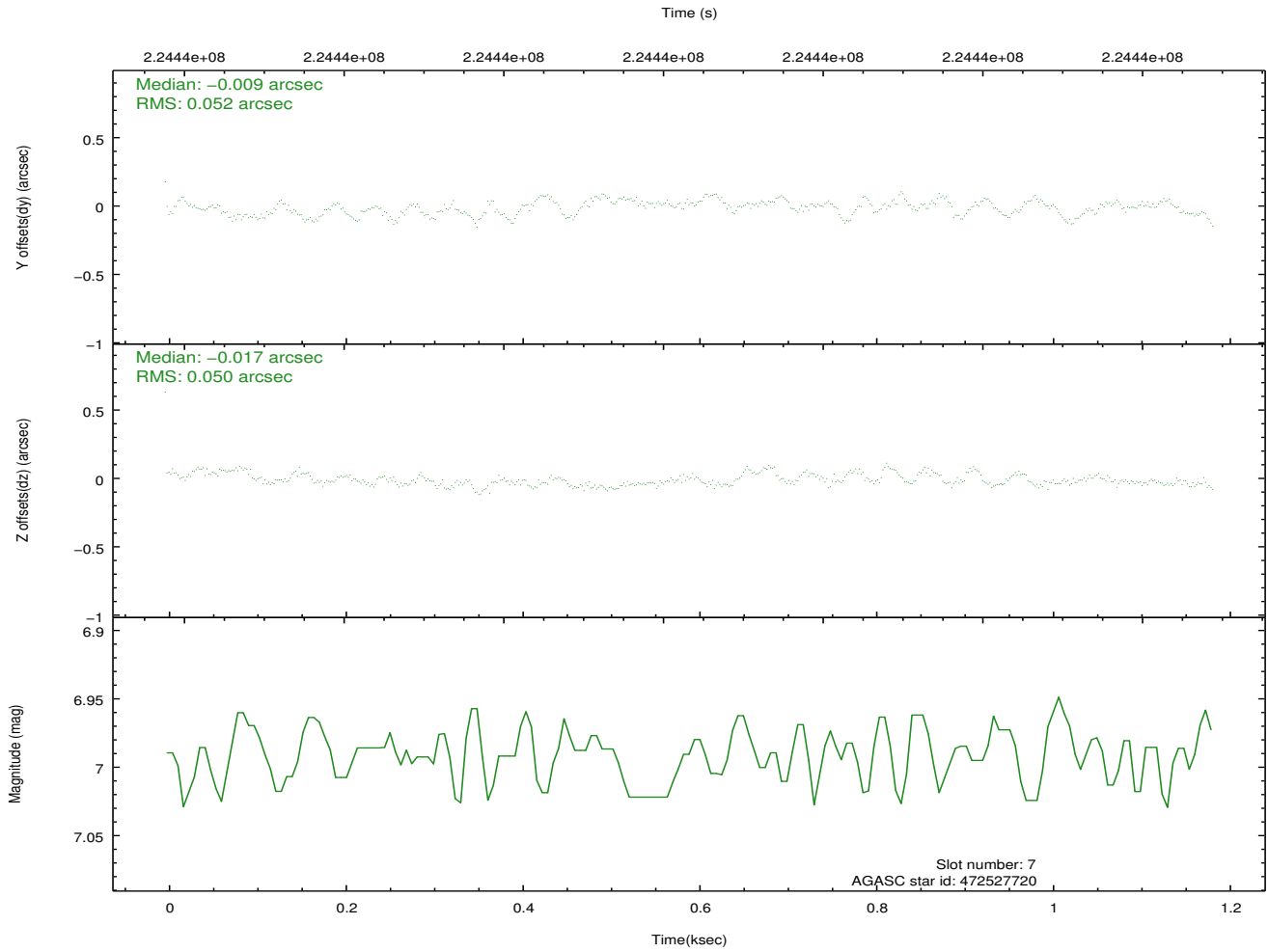
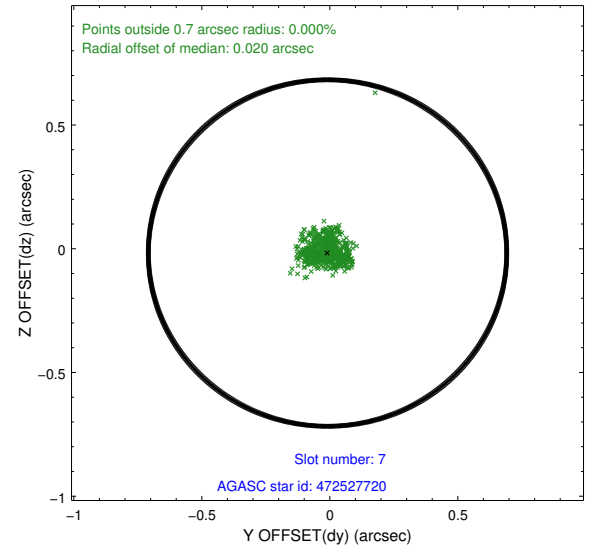
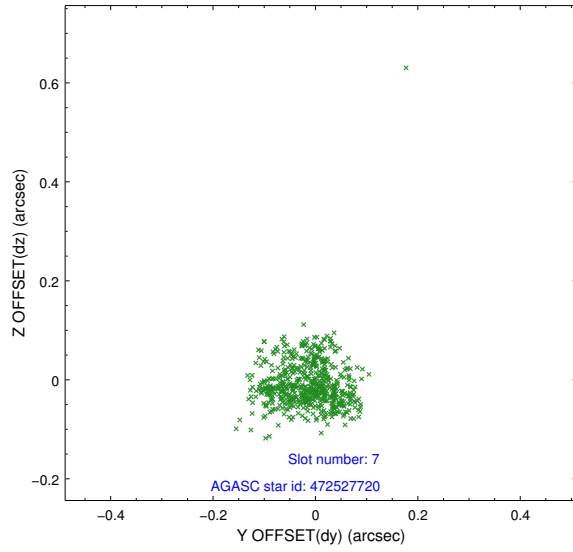
2.4.3 Slot 5



2.4.4 Slot 6

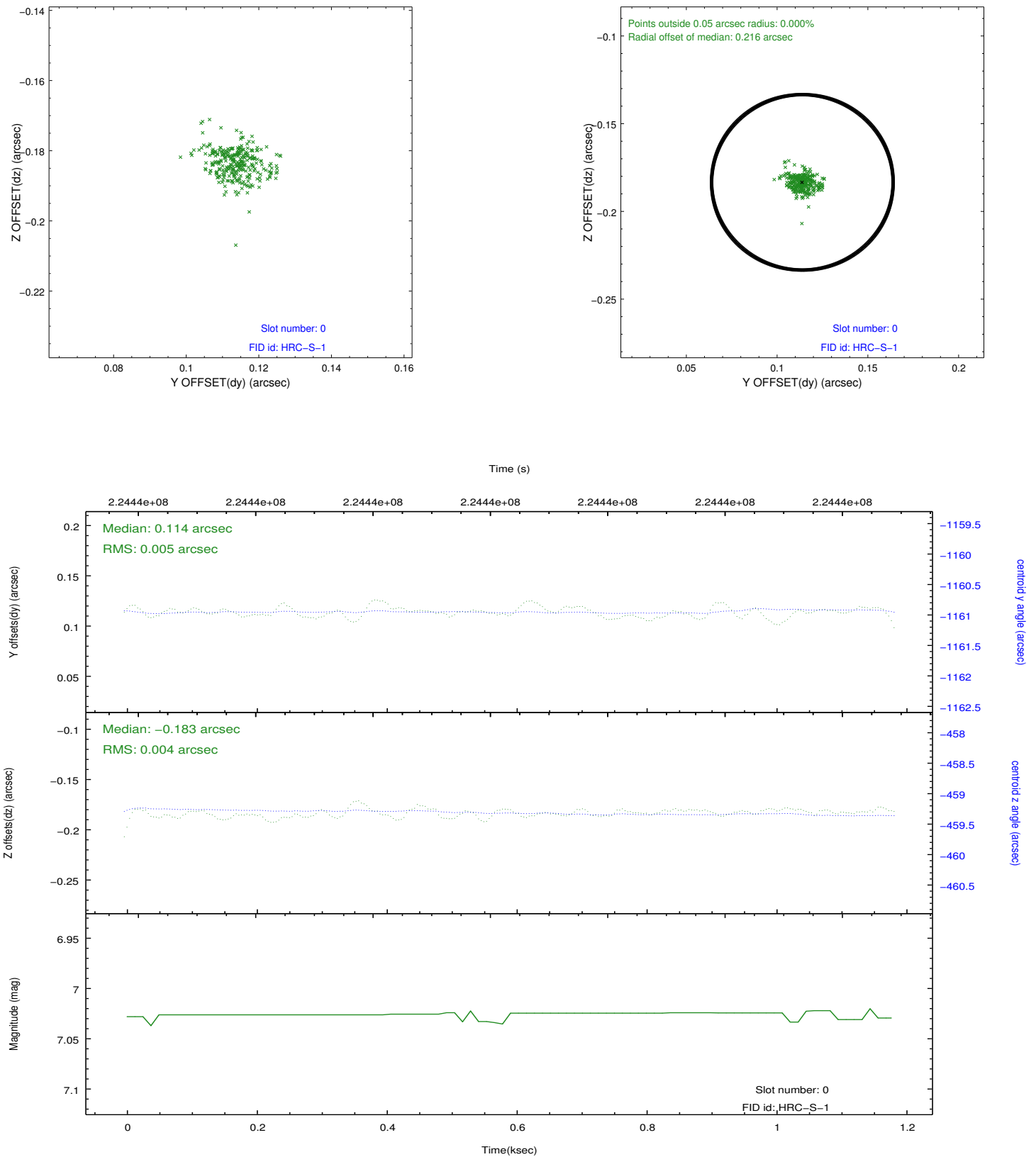


2.4.5 Slot 7

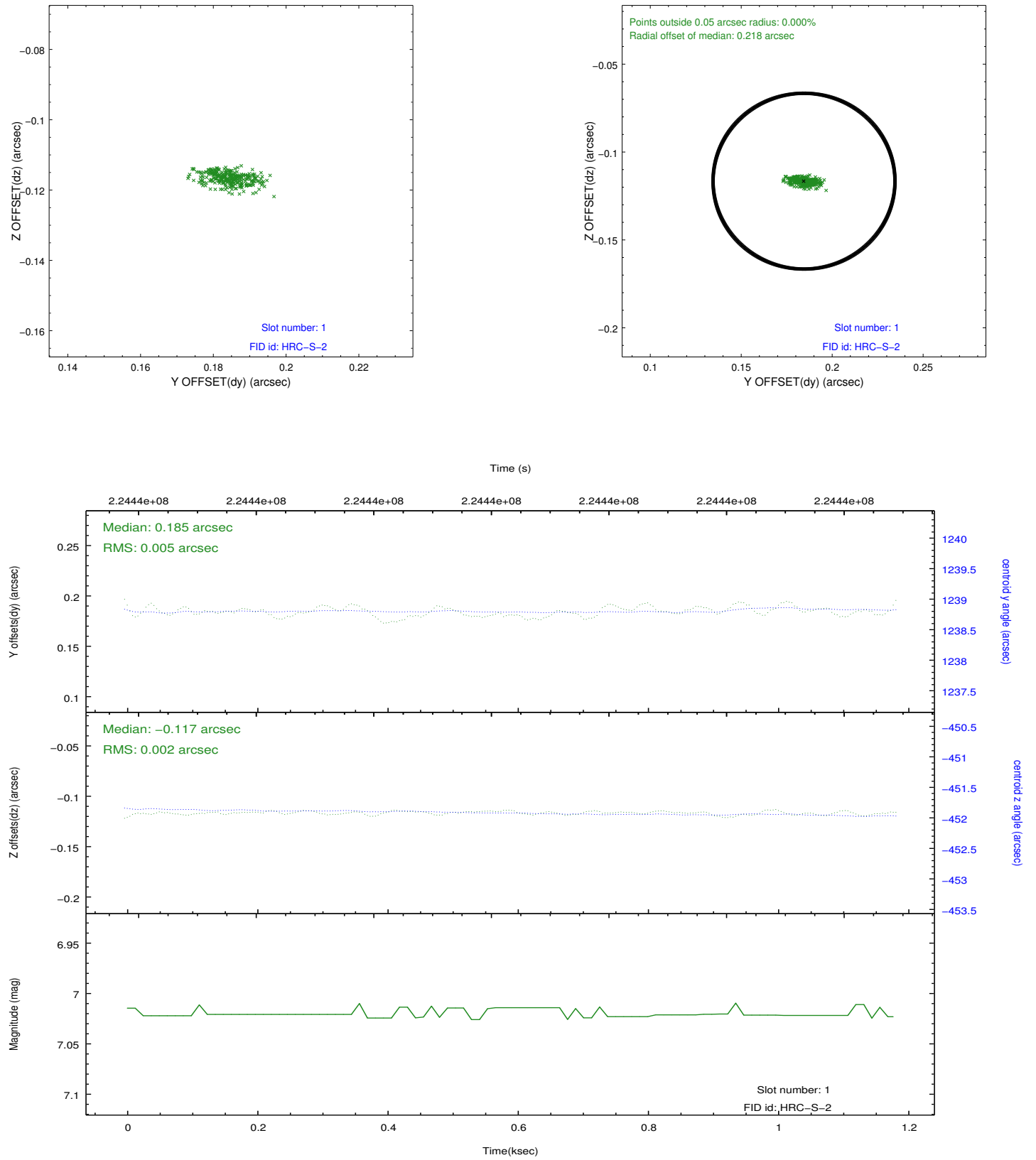


2.5 FID Slots

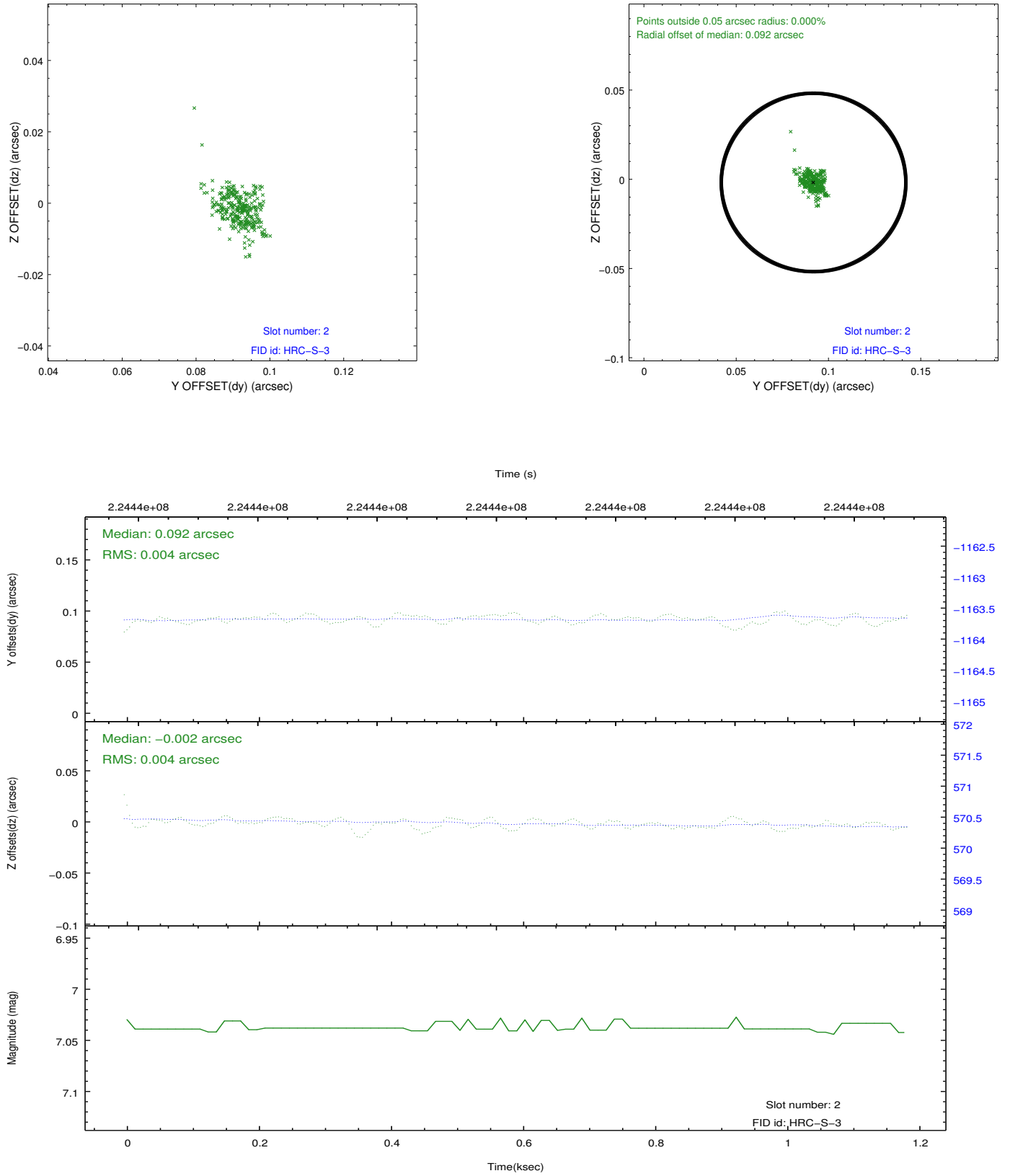
2.5.1 Slot 0



2.5.2 Slot 1



2.5.3 Slot 2



A Summary

A.1 Status

V&V Scientist	Jen Lauer
V&V Date (YYYY-MM-DD)	2013.01.11
V&V Edition	1
V&V Disposition and Status	OK
V&V Charge Time	1.155431

A.2 Comments