

V&V Reference Report

L2 ASCDS Version : 7.6.7.1

Observation 6162 - L2 Version 002
Chandra X-Ray Center

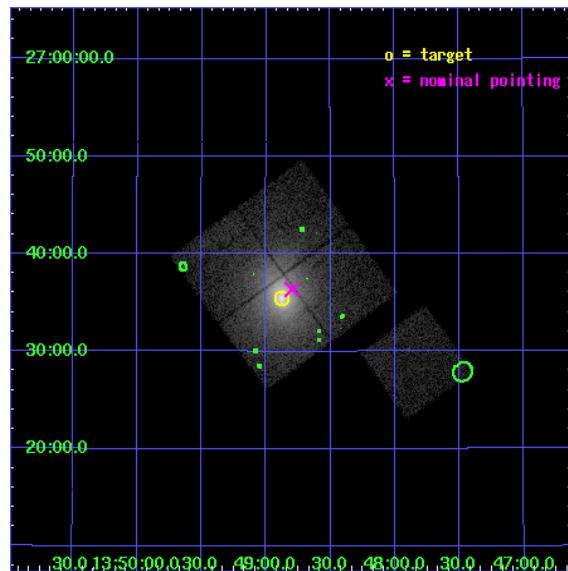
L2 Processing Date : Mar 17 2006

Contents

1	Front	2
2	OBI	3
2.1	OBI	3
2.1.1	Images	3
2.1.2	Bias	3
2.1.3	Parameters	4
2.1.4	Events	4
2.2	Compared Parameters	5
2.3	Aspect	6
2.4	Star Slots	9
2.4.1	Slot 3	9
2.4.2	Slot 4	10
2.4.3	Slot 5	11
2.4.4	Slot 6	12
2.4.5	Slot 7	13
2.5	FID Slots	14
2.5.1	Slot 0	14
2.5.2	Slot 1	15
2.5.3	Slot 2	16
3	Point Sources	17
A	Summary	18
A.1	Status	18
A.2	Comments	18

1 Front

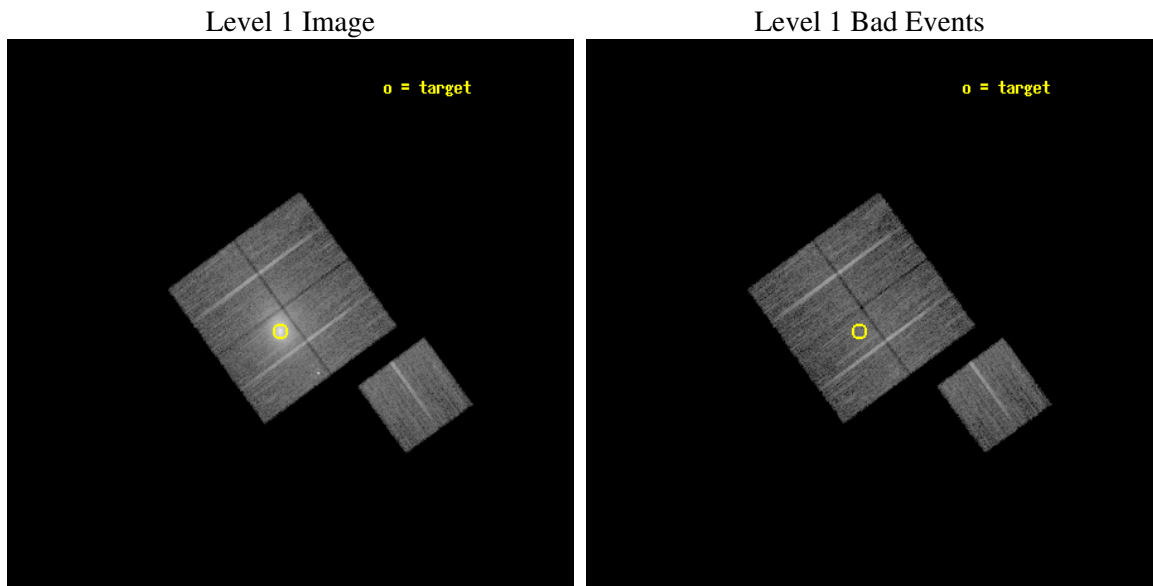
seq_num	890034
obs_id	6162
title	Monitoring the Spatial Variation of the ACIS Contaminant with Abell 1795
observer	Dr. CXC Calibration
object	A1795
dtcycle	0
cycle	P
ra_targ	207.219583
dec_targ	26.590833
ra_nom	207.19982875217
dec_nom	26.606038997492
roll_nom	143.86313101612
revision	2
ontime	13776.399973512
livetime	13596.40116582
ontime0	13773.258983254
ontime1	13770.117983133
ontime2	13776.399973512
ontime3	13776.399973512
ontime6	13776.399973512
l2events	154450



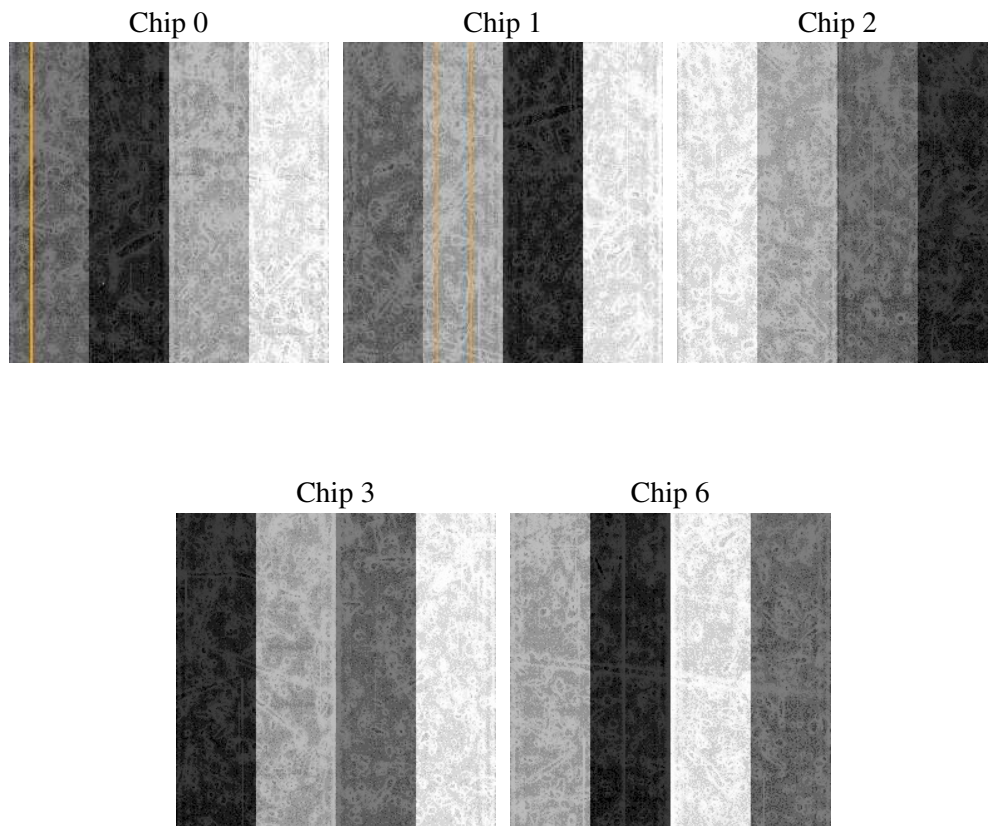
2 OBI

2.1 OBI

2.1.1 Images



2.1.2 Bias



2.1.3 Parameters

obi_num	0
ascdsver	7.6.7.1
caldsver	3.2.1
date	2006-03-17T17:44:55
revision	2

sched_exp_time	14000.000000
ontime	13779.627775222
ontime0	13776.486765027
ontime1	13773.345764905
ontime2	13779.627775222
ontime3	13779.627775222
ontime6	13782.768785387
l1events	544656

2.1.4 Events

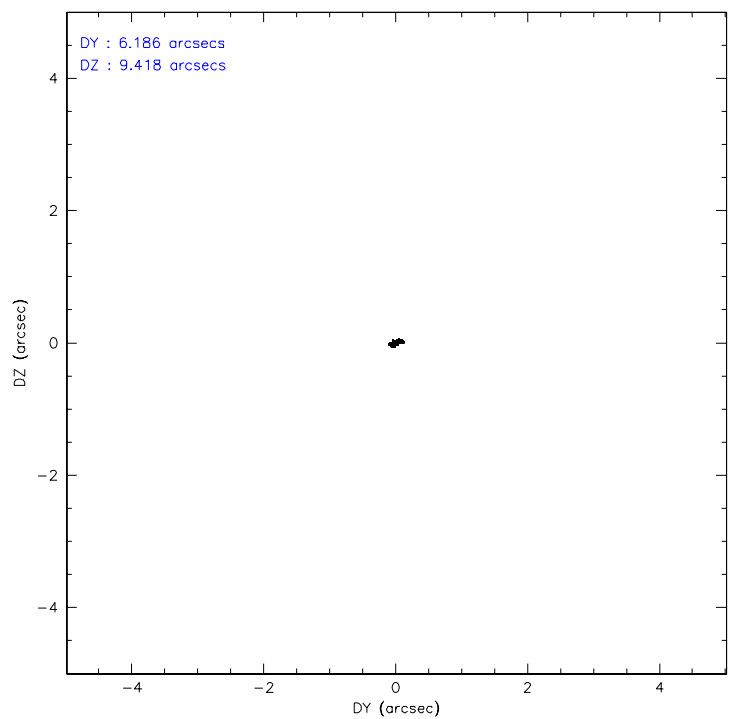
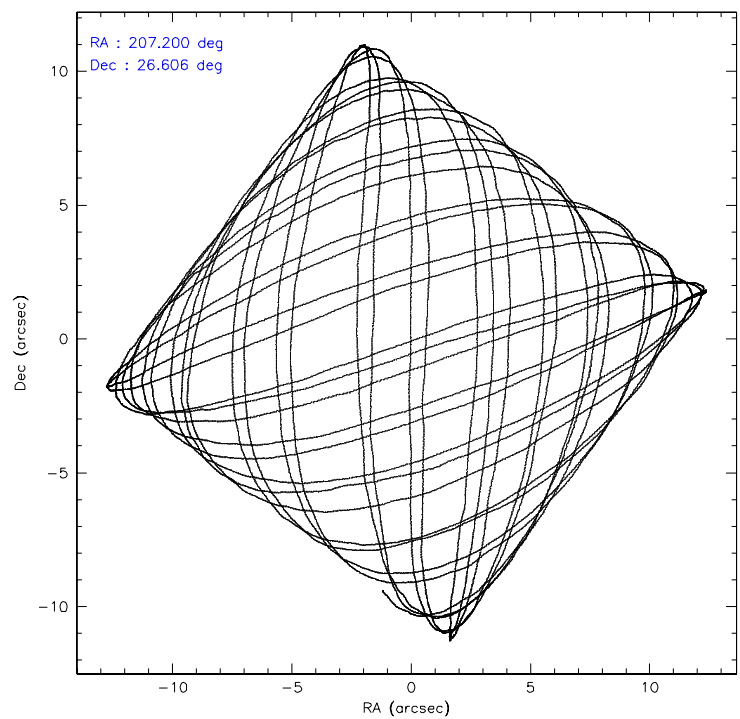
	ccd 0	ccd 1	ccd 2	ccd 3	ccd 6
level 1 events	85662	97251	101058	173304	87381
rejected events	69715	73233	79682	78080	78529
rejected %	81%	75%	78%	45%	89%

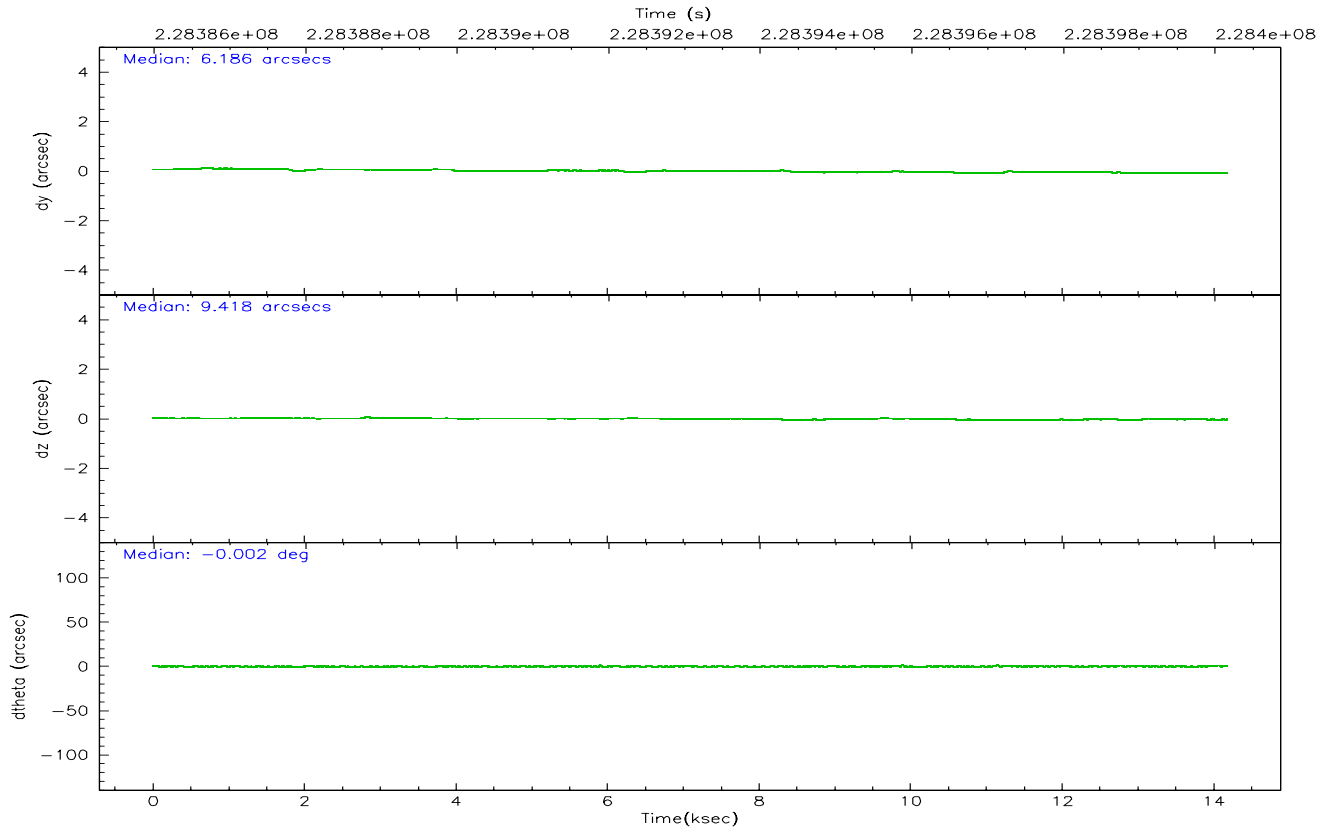
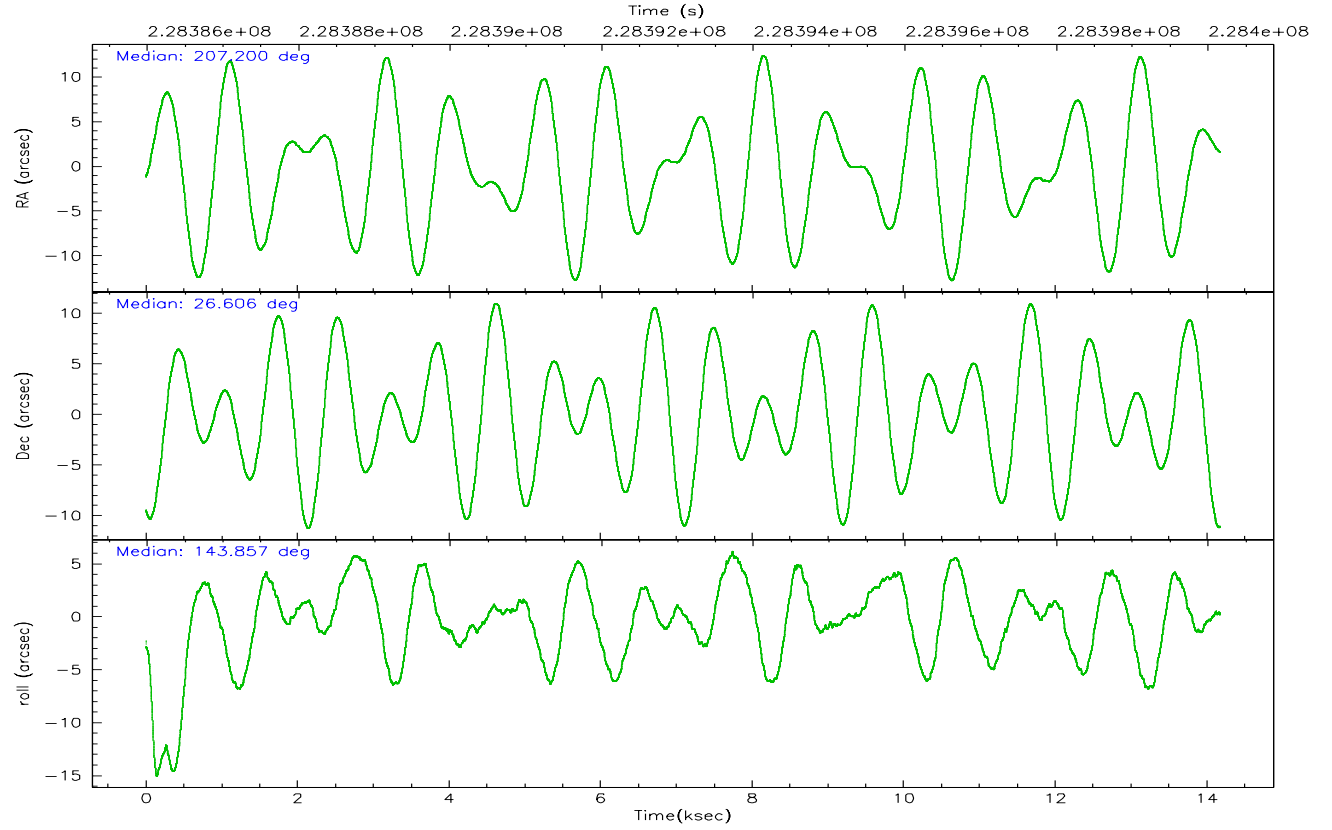
	ccd 0	ccd 1	ccd 2	ccd 3	ccd 6
grade 0 events	9171	15107	13790	74869	3239
	10%	15%	13%	43%	3%
grade 1 events	64	86	97	443	36
	0%	0%	0%	0%	0%
grade 2 events	2612	3525	3172	10021	1811
	3%	3%	3%	5%	2%
grade 3 events	1216	1547	1312	3431	976
	1%	1%	1%	1%	1%
grade 4 events	1105	1542	1281	3368	954
	1%	1%	1%	1%	1%
grade 5 events	3003	3297	2826	3633	3348
	3%	3%	2%	2%	3%
grade 6 events	1847	2304	1827	3556	1877
	2%	2%	1%	2%	2%
grade 7 events	66644	69843	76753	73983	75140
	77%	71%	75%	42%	85%

2.2 Compared Parameters

Parameter	Planned	Actual	Parameter	Planned	Actual
Instrument	ACIS	ACIS	Obspar format version number	6	6
Detector	ACIS-01236	ACIS-01236	Obspar file type	PREDICTED	ACTUAL
Grating	NONE	NONE	Obspar update status	NONE	UPDATED
Data mode	VFAINT	VFAINT	On-chip summing requested	N	N
Observation mode	POINTING	POINTING	Subarray requested	NONE	NONE
Pointing RA	207.230272	207.1998287521677	Alternating exposures requested	N	N
Pointing Dec	26.603260	26.60603899749248	Primary exposure time	0.000000	3.1
Pointing Roll	143.640814	143.8631310161184			
SIM focus pos (mm)	-0.782348	-0.7809083437167272			
SIM defocus (mm)	0	0.001439871863259334			
SIM translation stage pos (mm)	-230.252463	-230.2509380556586			
SIM translation stage offset (mm)	-3.34	-3.341514947271122			
Observation start time	228386164.184000	228385787.73698			
Observation start date	2005-03-28T08:35:00	2005-03-28T08:29:47			
Observation end time	228400164.184000	228401047.42517			
Observation end date	2005-03-28T12:28:20	2005-03-28T12:44:07			
Read mode	TIMED	TIMED			

2.3 Aspect



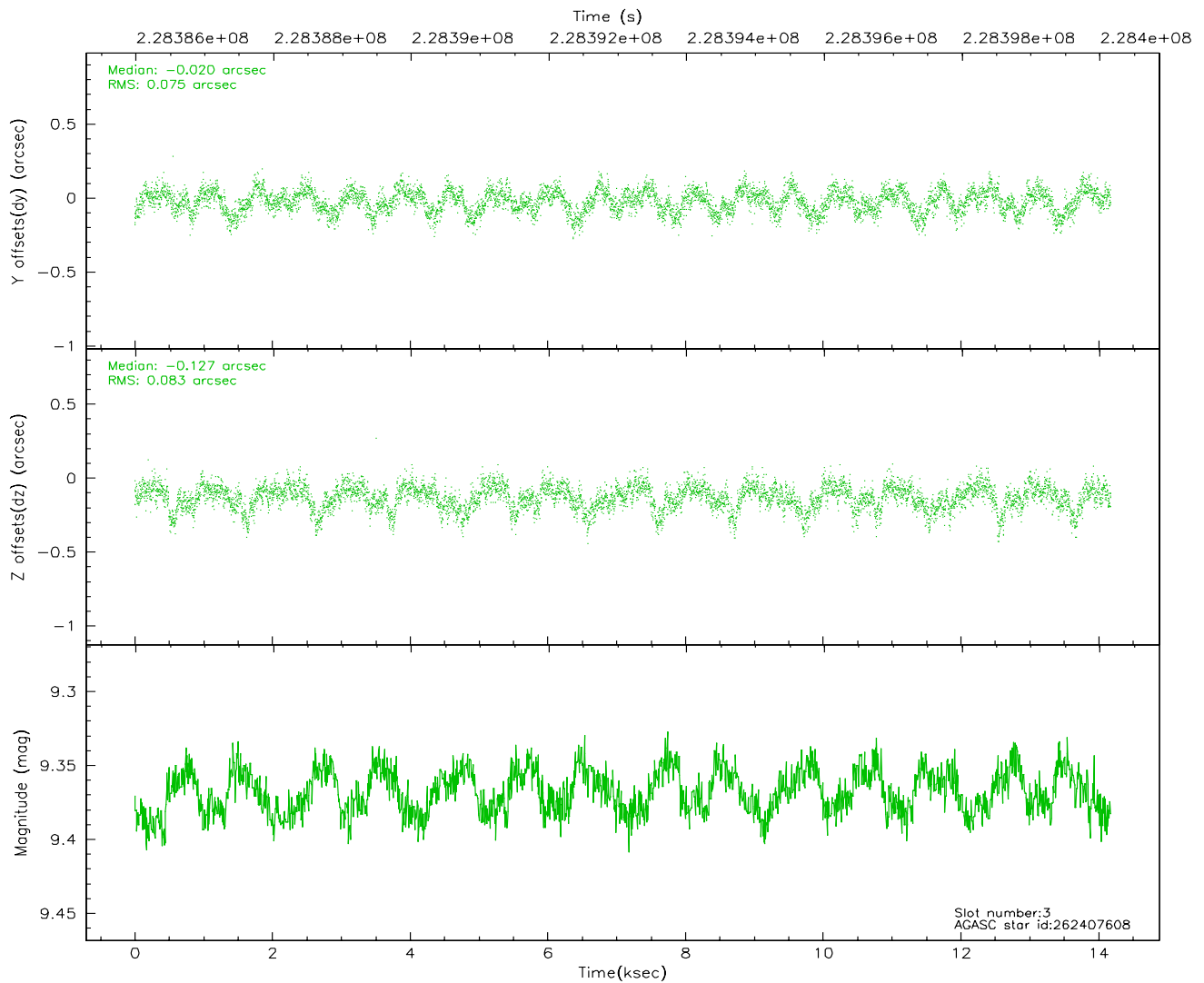
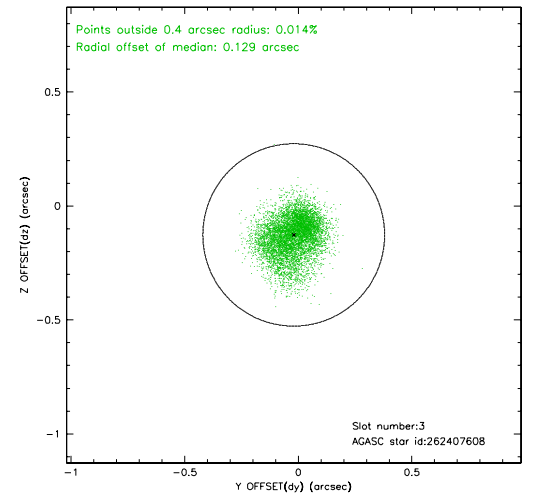
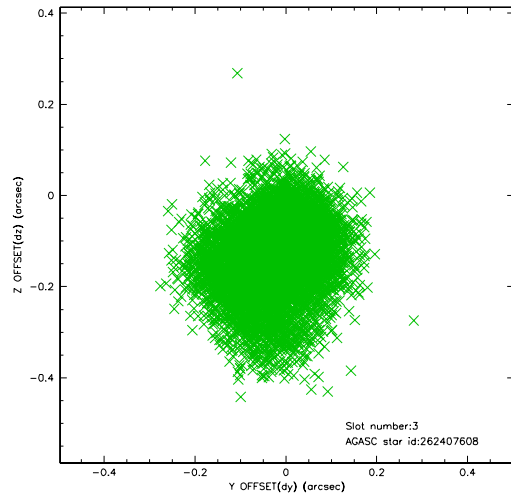


Slot Statistics

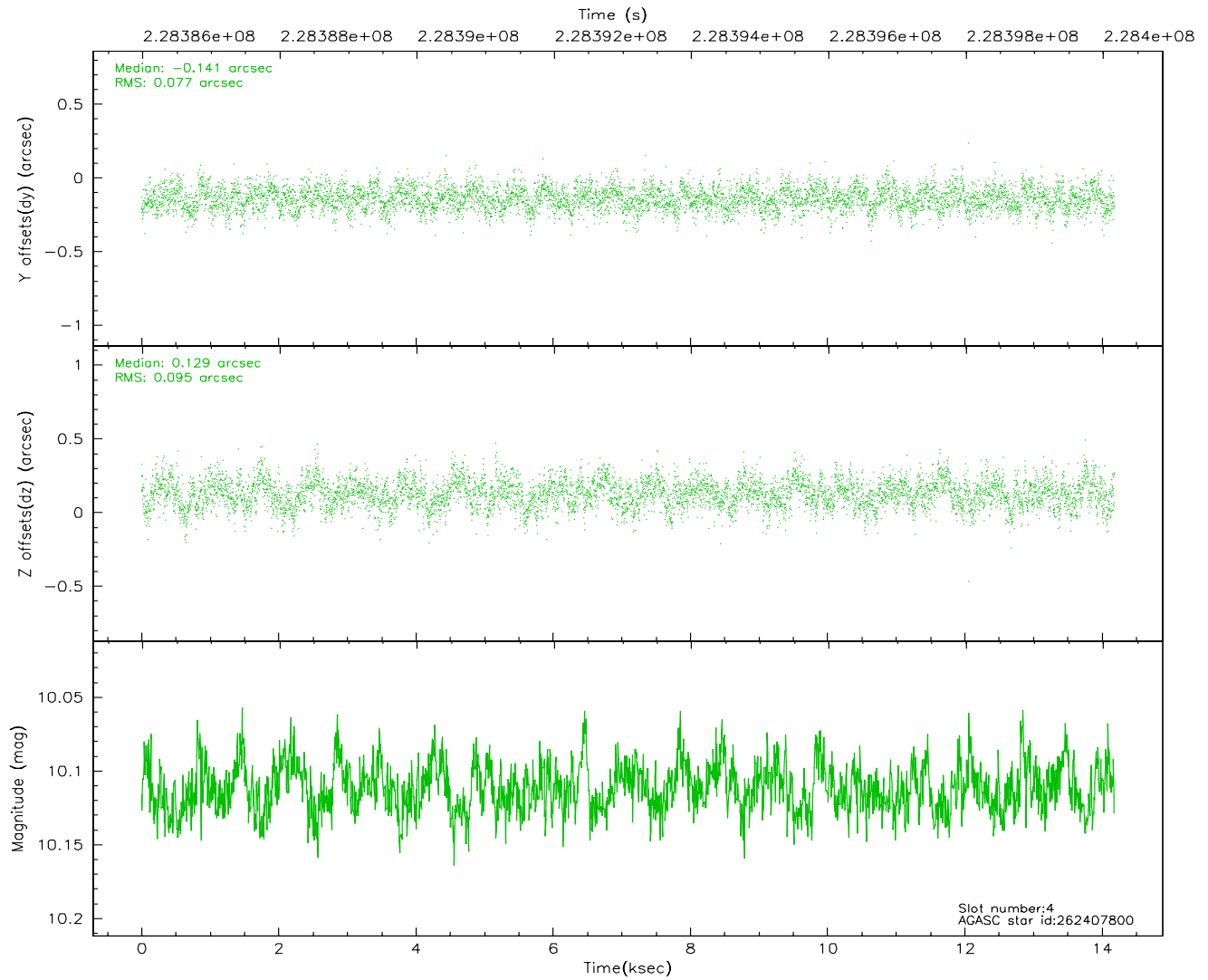
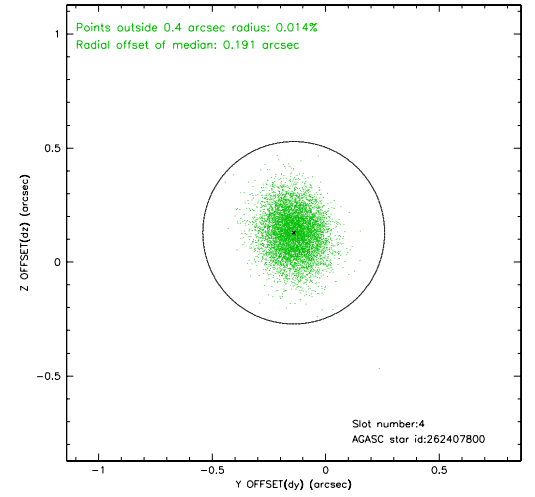
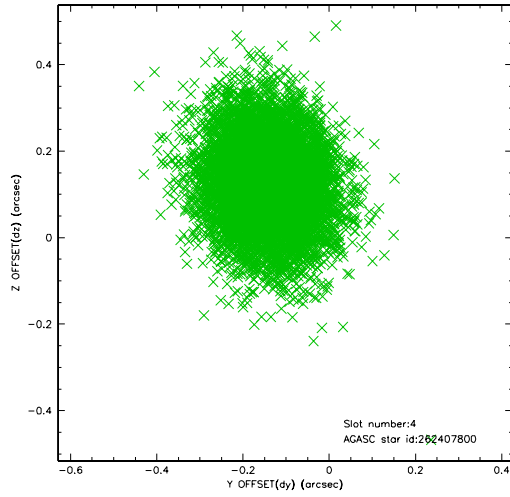
slot	status	id	mag	n_pts	med_dy	med_dz	dr1	dr2	ra	dec	mean_y	mean_z
0	FID	ACIS-I-1	7.24	3459	0.042	0.033	0.006	0.010	0.000000	0.000000	933.50	-901.38
1	FID	ACIS-I-5	7.23	3459	-0.184	0.065	0.006	0.010	0.000000	0.000000	-1814.65	995.96
2	FID	ACIS-I-6	7.26	3458	0.050	-0.028	0.007	0.011	0.000000	0.000000	398.69	1640.74
3	GUIDE	262407608	9.37	6916	-0.020	-0.127	0.119	0.191	207.378401	26.435507	-742.25	202.91
4	GUIDE	262407800	10.11	6907	-0.141	0.129	0.129	0.210	207.321181	27.251762	1150.80	-2051.56
5	GUIDE	262408096	9.34	6917	0.053	-0.029	0.108	0.182	207.011678	26.515421	380.57	671.52
6	GUIDE	262408936	9.68	6910	0.071	0.087	0.128	0.208	207.154731	26.726554	459.10	-213.15
7	GUIDE	262411960	9.69	6912	0.037	-0.060	0.132	0.205	207.327895	25.881727	-1794.39	1904.14

2.4 Star Slots

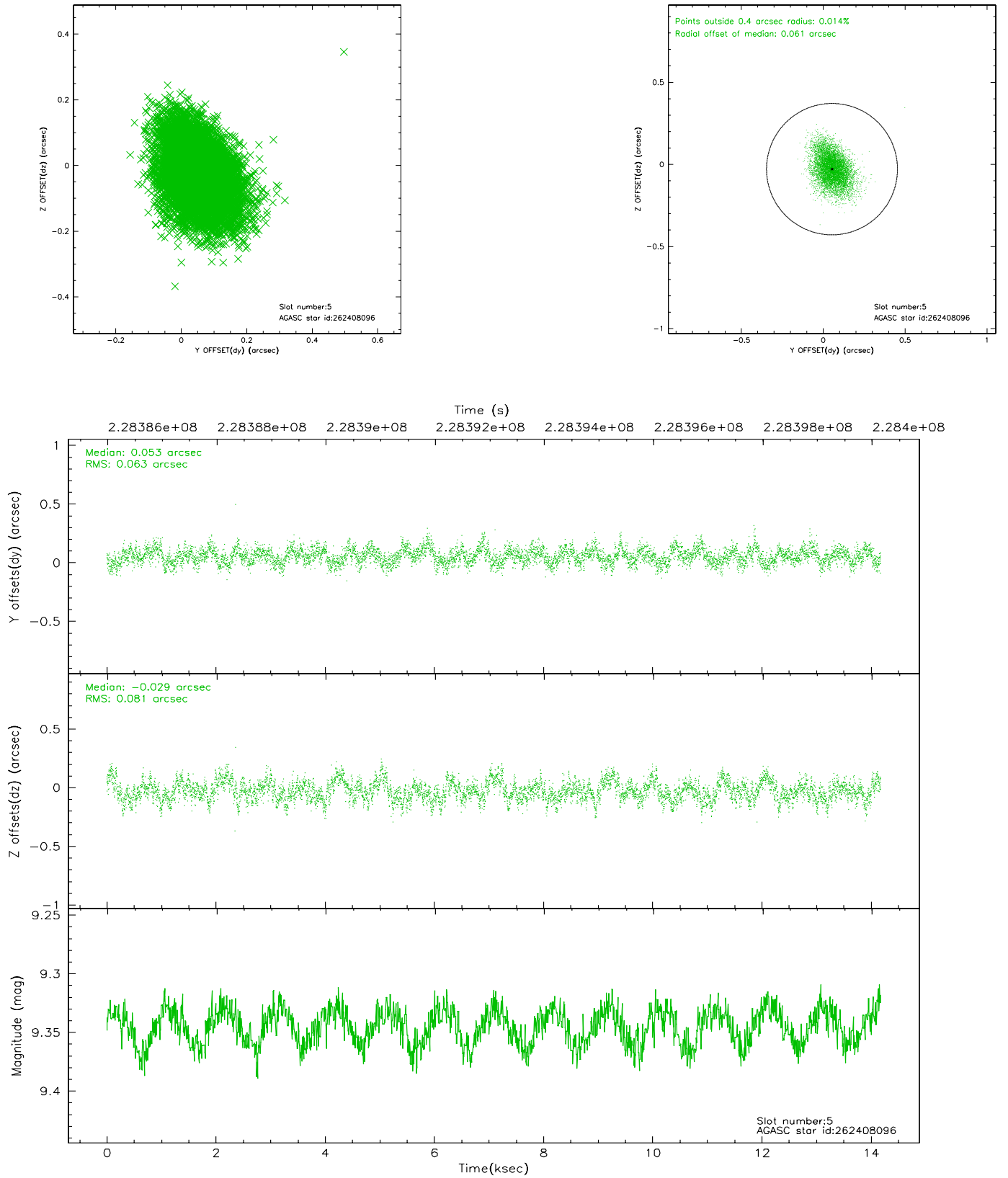
2.4.1 Slot 3



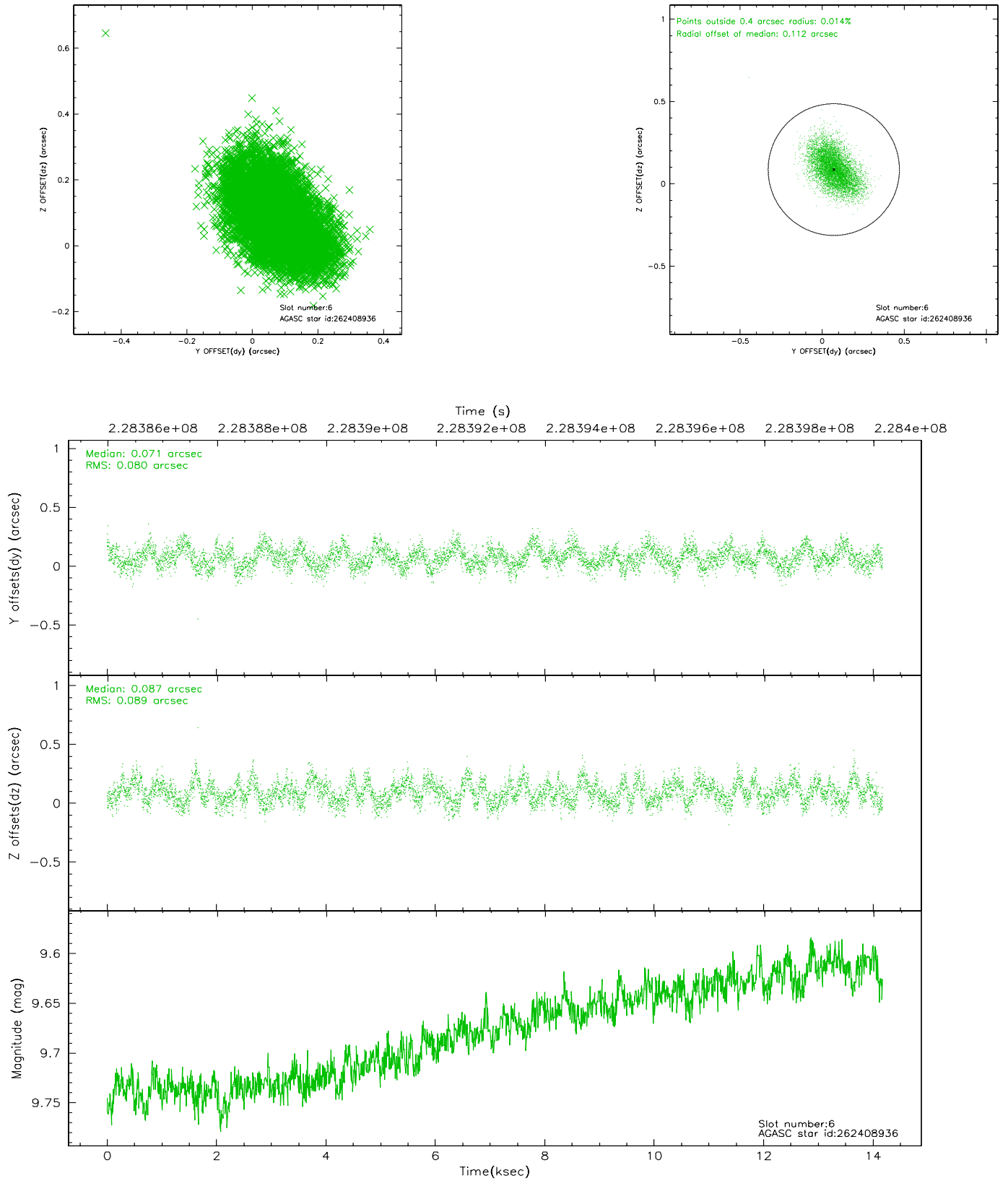
2.4.2 Slot 4



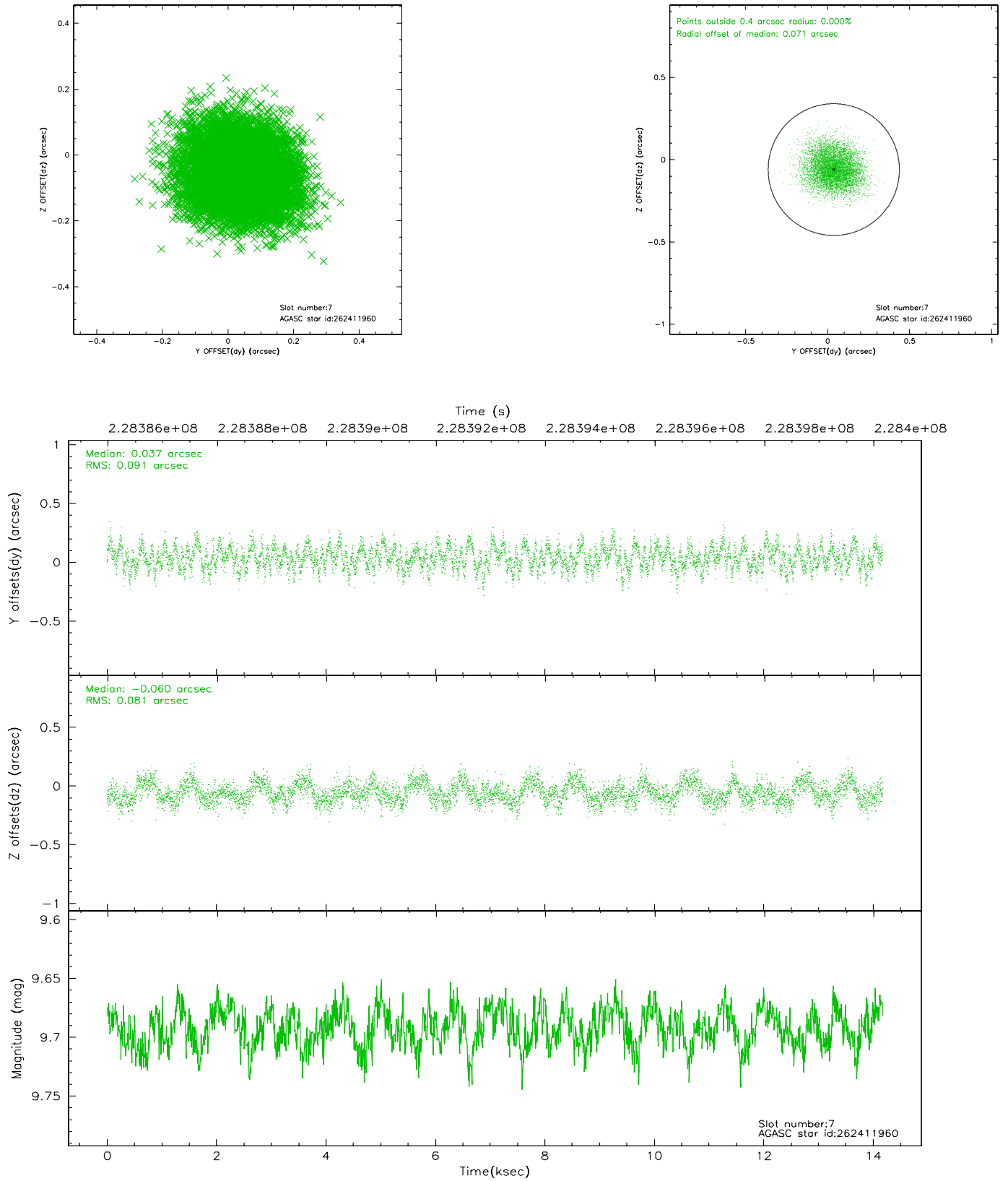
2.4.3 Slot 5



2.4.4 Slot 6

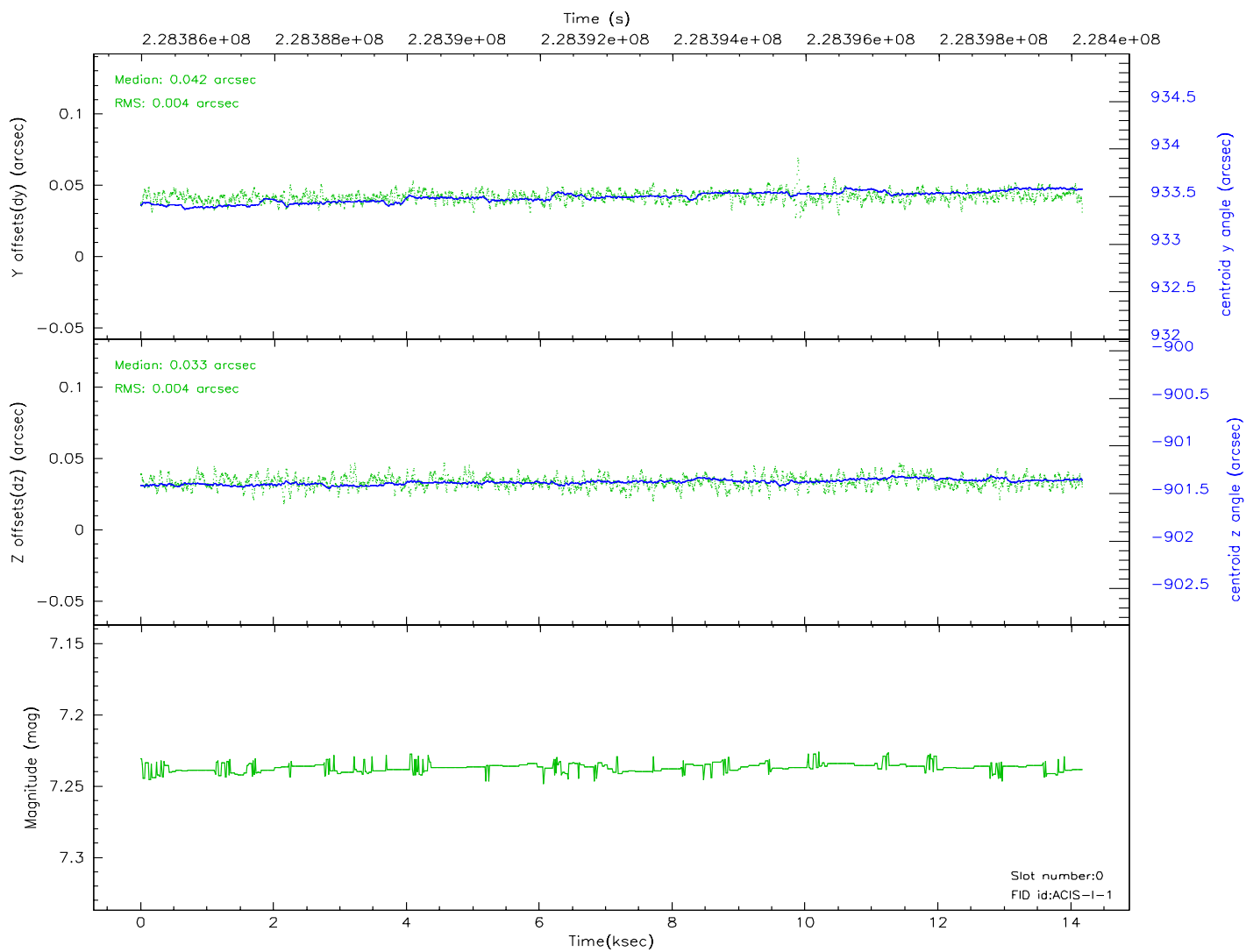
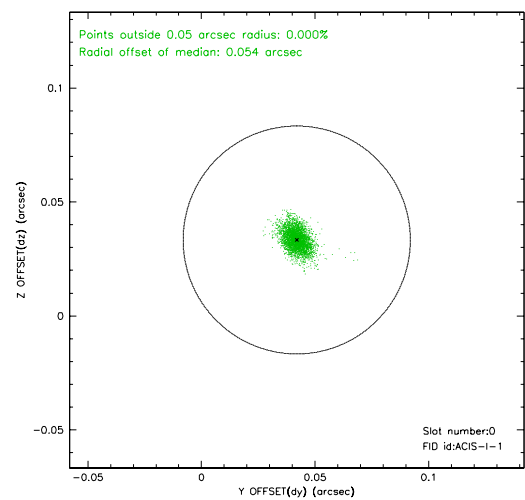
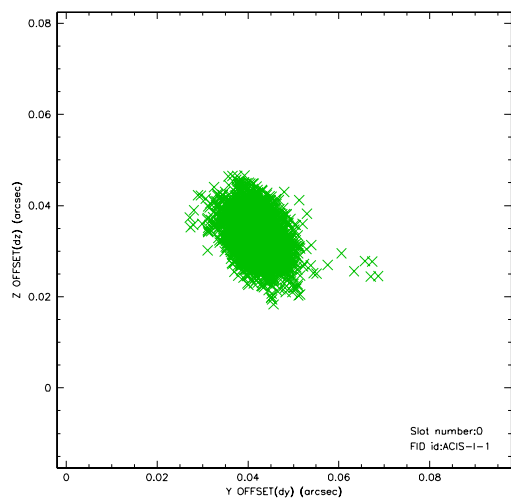


2.4.5 Slot 7

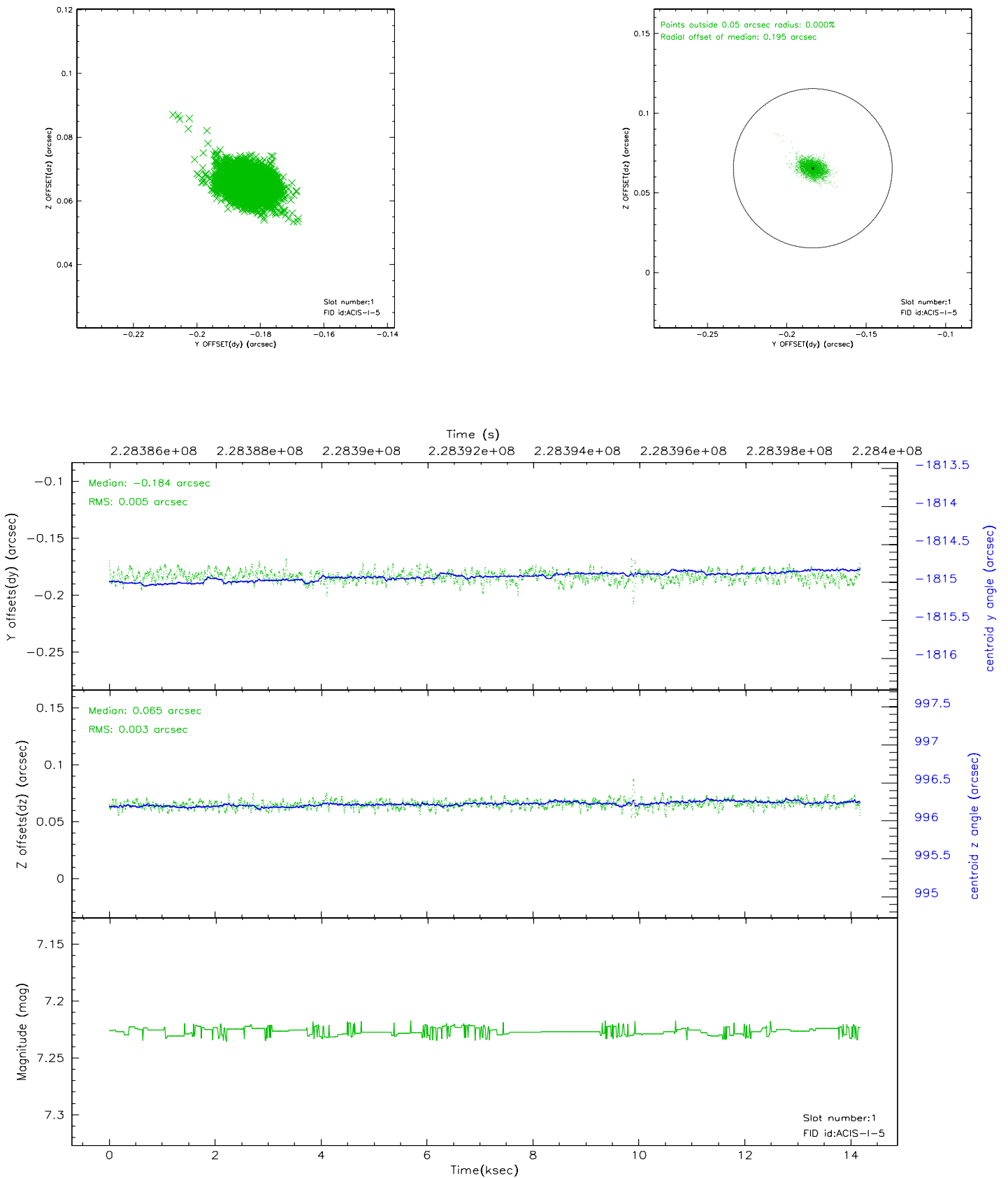


2.5 FID Slots

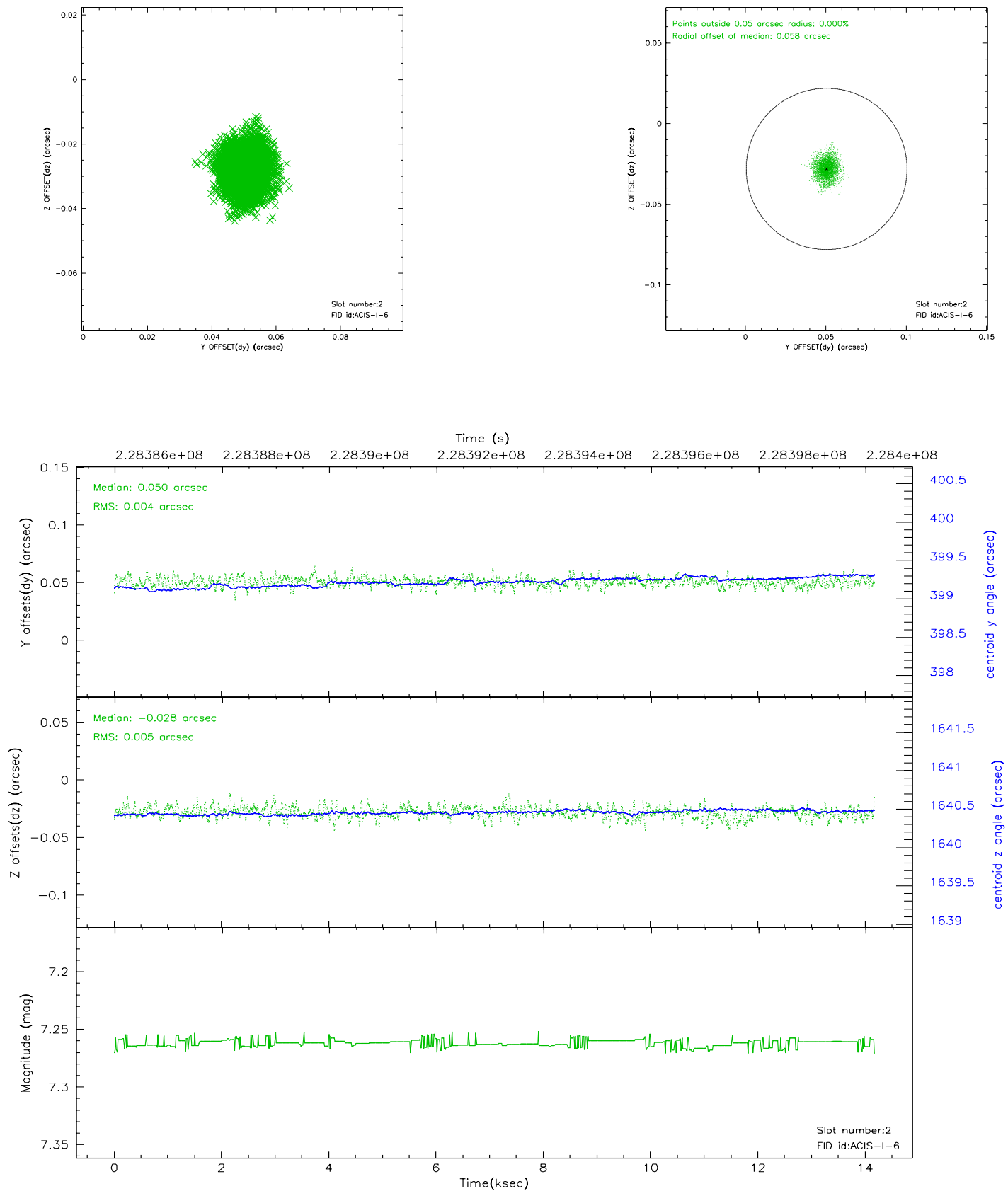
2.5.1 Slot 0



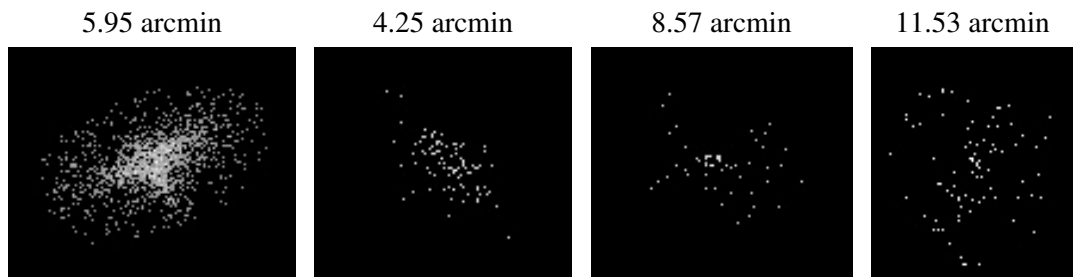
2.5.2 Slot 1



2.5.3 Slot 2



3 Point Sources



A Summary

A.1 Status

V&V Scientist	Beth Sundheim
V&V Date (YYYY-MM-DD)	2006.03.17
V&V Edition	1
V&V Disposition and Status	OK
V&V Charge Time	13.77639

A.2 Comments