

V&V Reference Report

L2 ASCDS Version : 7.6.7.2

Observation 5288 - L2 Version 001
Chandra X-Ray Center

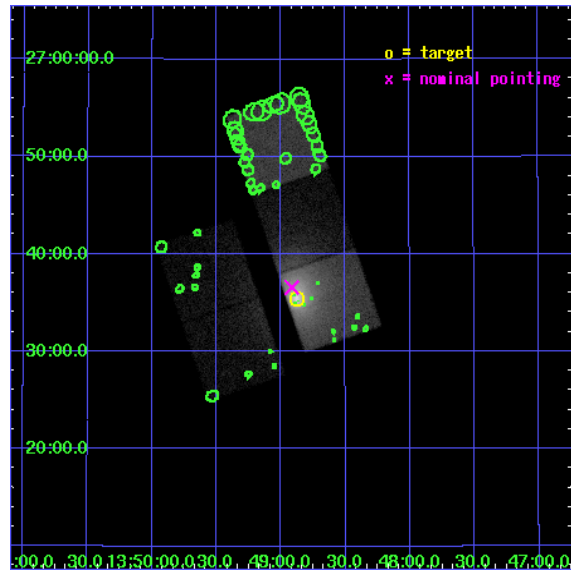
L2 Processing Date : Jun 6 2006

Contents

1	Front	2
2	OBI	3
2.1	OBI	3
2.1.1	Images	3
2.1.2	Bias	3
2.1.3	Parameters	4
2.1.4	Events	4
2.2	Compared Parameters	5
2.3	Aspect	6
2.4	Star Slots	9
2.4.1	Slot 3	9
2.4.2	Slot 4	10
2.4.3	Slot 5	11
2.4.4	Slot 6	12
2.4.5	Slot 7	13
2.5	FID Slots	14
2.5.1	Slot 0	14
2.5.2	Slot 1	15
2.5.3	Slot 2	16
3	Point Sources	17
A	Summary	18
A.1	Status	18
A.2	Comments	18

1 Front

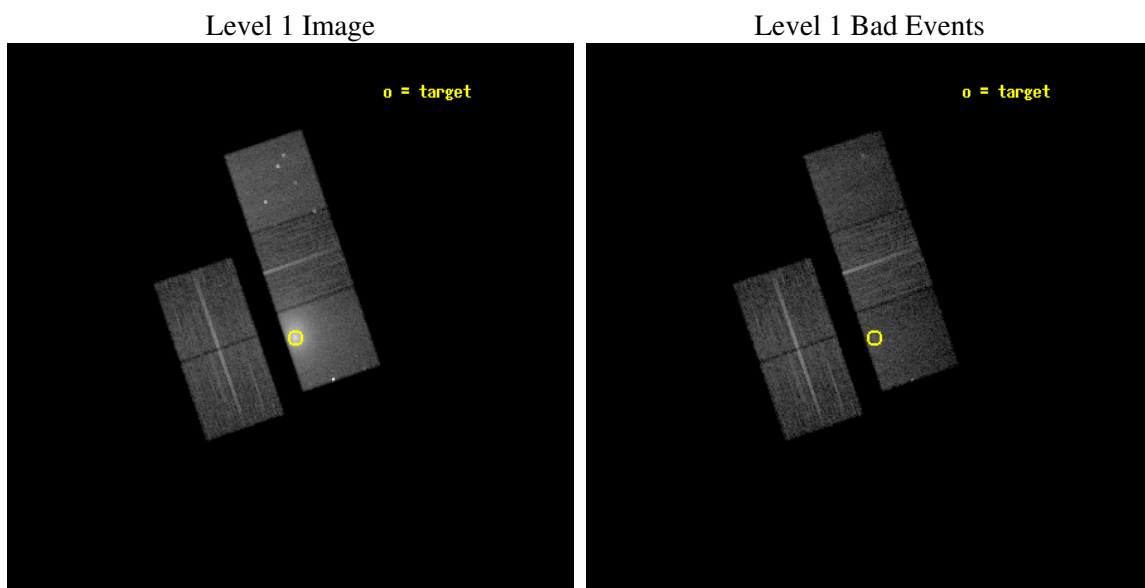
seq_num	890028
obs_id	5288
title	Mapping the Depth of the Contaminant on the ACIS Filters with Abell 11795
observer	Dr. CXC Calibration
object	A1795
dtcycle	0
cycle	P
ra_targ	207.219583
dec_targ	26.590833
ra_nom	207.22883390337
dec_nom	26.6098240025
roll_nom	71.182248427421
revision	2
ontime	14762.199971616
livetime	14569.320961214
ontime2	14759.058981478
ontime3	14762.199971616
ontime5	14762.199971616
ontime6	14762.199971616
ontime7	14762.199971616
l2events	268021



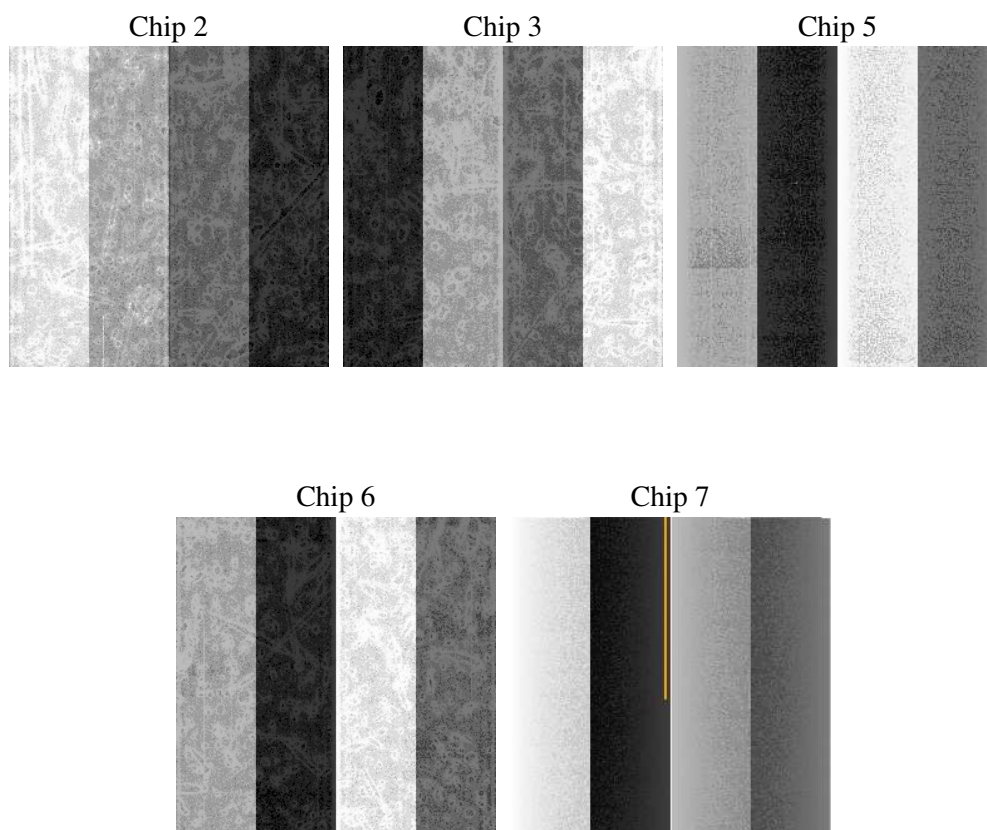
2 OBI

2.1 OBI

2.1.1 Images



2.1.2 Bias



2.1.3 Parameters

obi_num	1
ascdsver	7.6.7.2
caldbver	3.2.2
date	2006-06-06T20:01:37
revision	2

sched_exp_time	14641.000000
ontime	15023.416515142
ontime2	15023.416535079
ontime3	15026.557525218
ontime5	15023.41653505
ontime6	15023.416515142
ontime7	15023.416515142
l1events	605077

2.1.4 Events

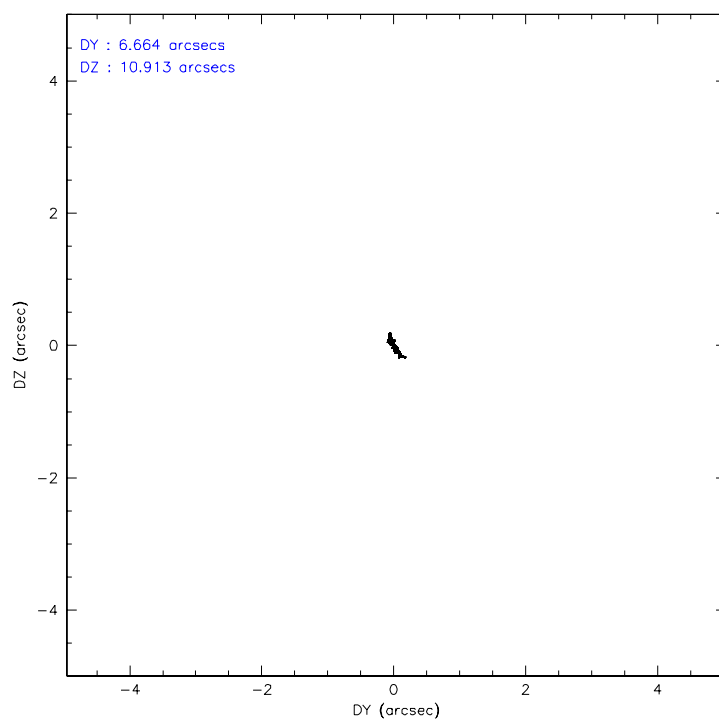
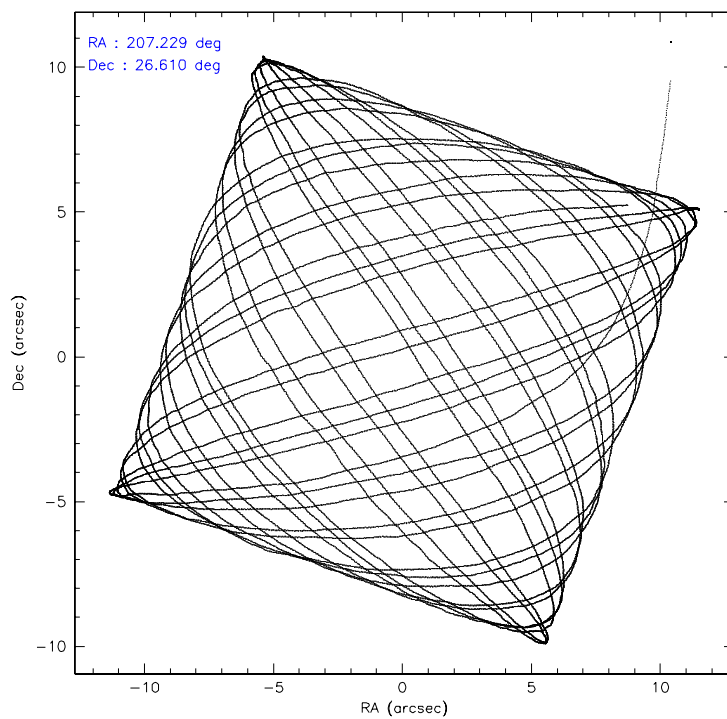
	ccd 2	ccd 3	ccd 5	ccd 6	ccd 7
level 1 events	81731	80836	109745	90161	242604
rejected events	71285	69485	56864	71134	56357
rejected %	87%	85%	51%	78%	23%

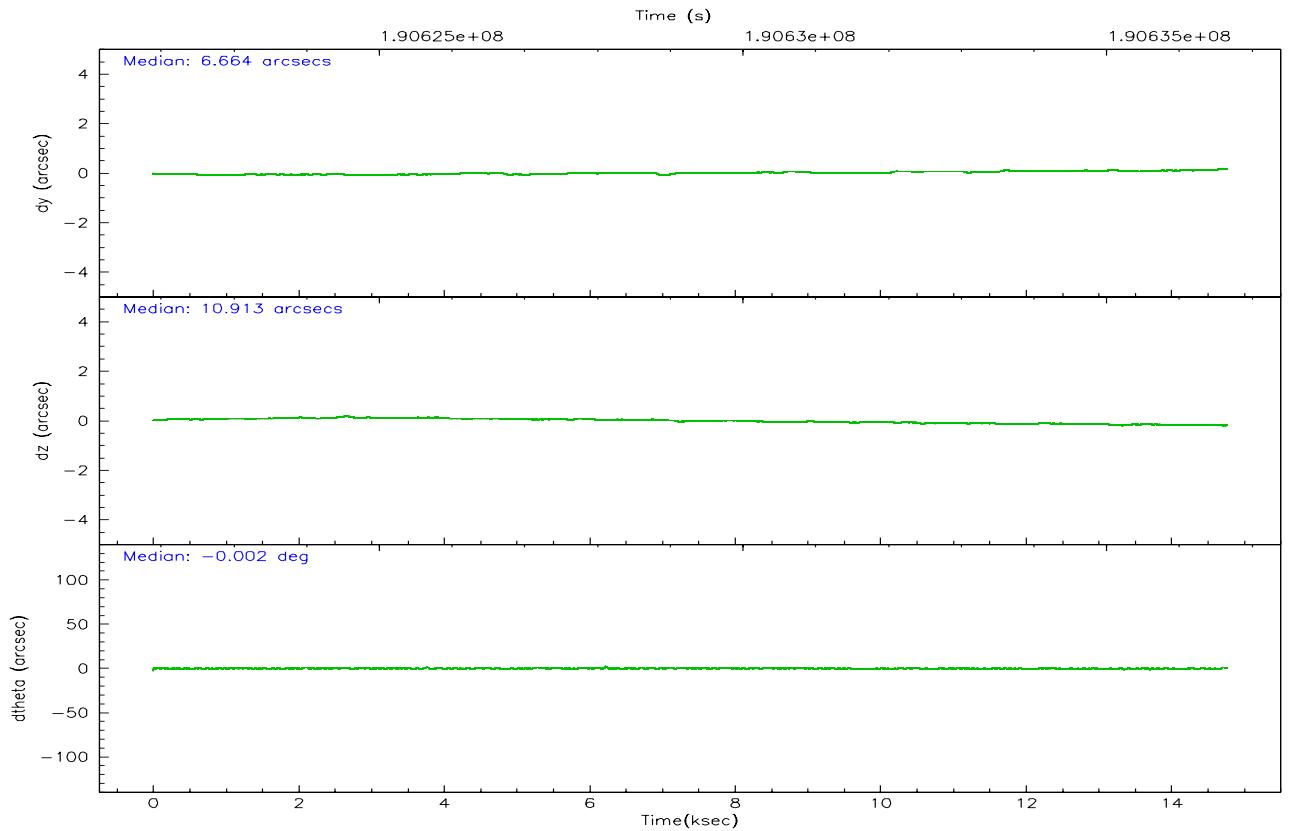
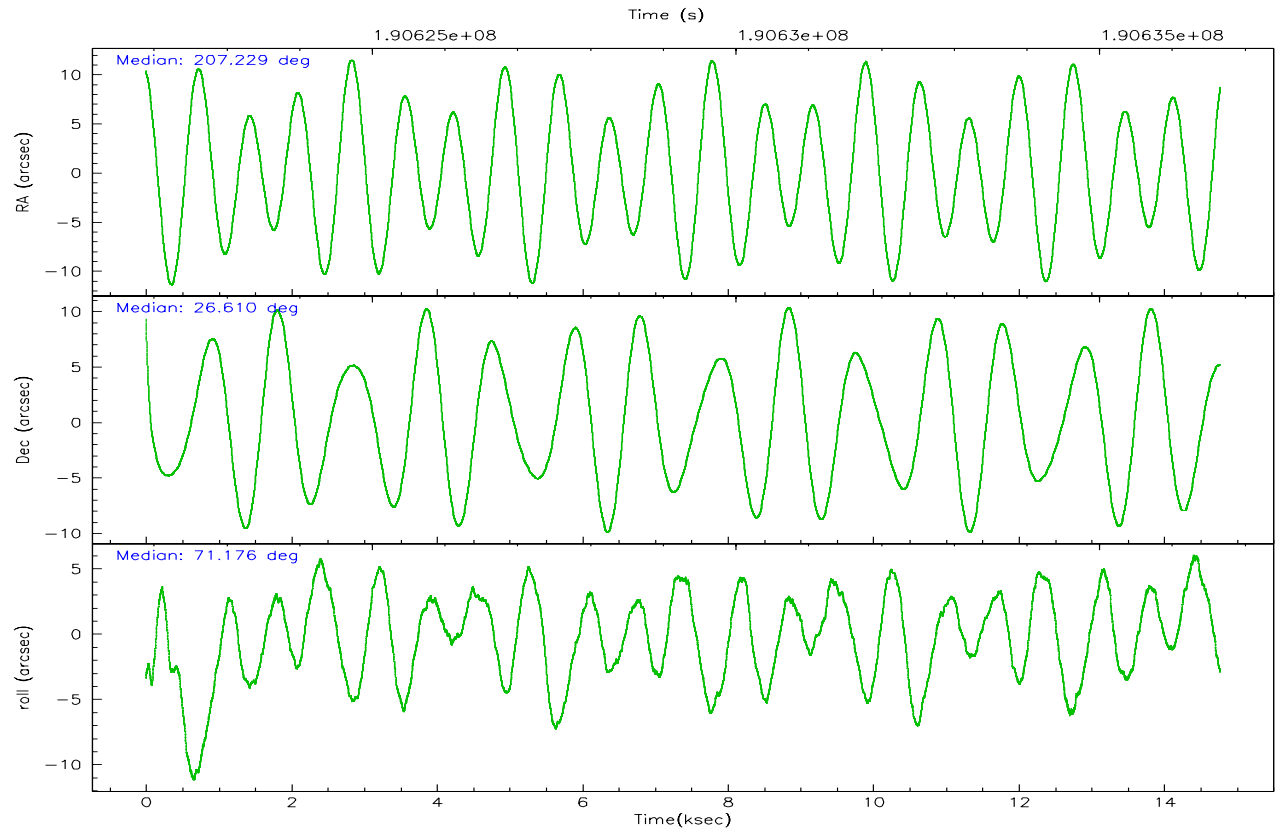
	ccd 2	ccd 3	ccd 5	ccd 6	ccd 7
grade 0 events	5324	5970	6320	12034	44640
	6%	7%	5%	13%	18%
grade 1 events	49	51	34	82	115
	0%	0%	0%	0%	0%
grade 2 events	1933	1999	16149	2898	54327
	2%	2%	14%	3%	22%
grade 3 events	918	985	1392	1222	17417
	1%	1%	1%	1%	7%
grade 4 events	959	1042	1279	1216	17056
	1%	1%	1%	1%	7%
grade 5 events	2498	3149	5730	3169	8004
	3%	3%	5%	3%	3%
grade 6 events	1485	1566	28744	1947	55319
	1%	1%	26%	2%	22%
grade 7 events	68565	66074	50097	67593	45726
	83%	81%	45%	74%	18%

2.2 Compared Parameters

Parameter	Planned	Actual	Parameter	Planned	Actual
Instrument	ACIS	ACIS	Obspar format version number	6	6
Detector	ACIS-23567	ACIS-23567	Obspar file type	PREDICTED	ACTUAL
Grating	NONE	NONE	Obspar update status	NONE	UPDATED
Data mode	VFAINT	VFAINT	On-chip summing requested	N	N
Observation mode	POINTING	POINTING	Subarray requested	NONE	NONE
Pointing RA	207.235177	207.2288339033674	Alternating exposures requested	N	N
Pointing Dec	26.583224	26.60982400250033	Primary exposure time	0.000000	3.1
Pointing Roll	71.022782	71.18224842742102			
SIM focus pos (mm)	-0.684267	-0.6828225247311905			
SIM defocus (mm)	0	0.001444936568705701			
SIM translation stage pos (mm)	-200.032523	-200.036411076812			
SIM translation stage offset (mm)	9.9	9.903888493804232			
Observation start time	190622011.184000	190620925.90536			
Observation start date	2004-01-16T06:32:27	2004-01-16T06:15:25			
Observation end time	190636652.184000	190637538.59358			
Observation end date	2004-01-16T10:36:28	2004-01-16T10:52:18			
Read mode	TIMED	TIMED			

2.3 Aspect



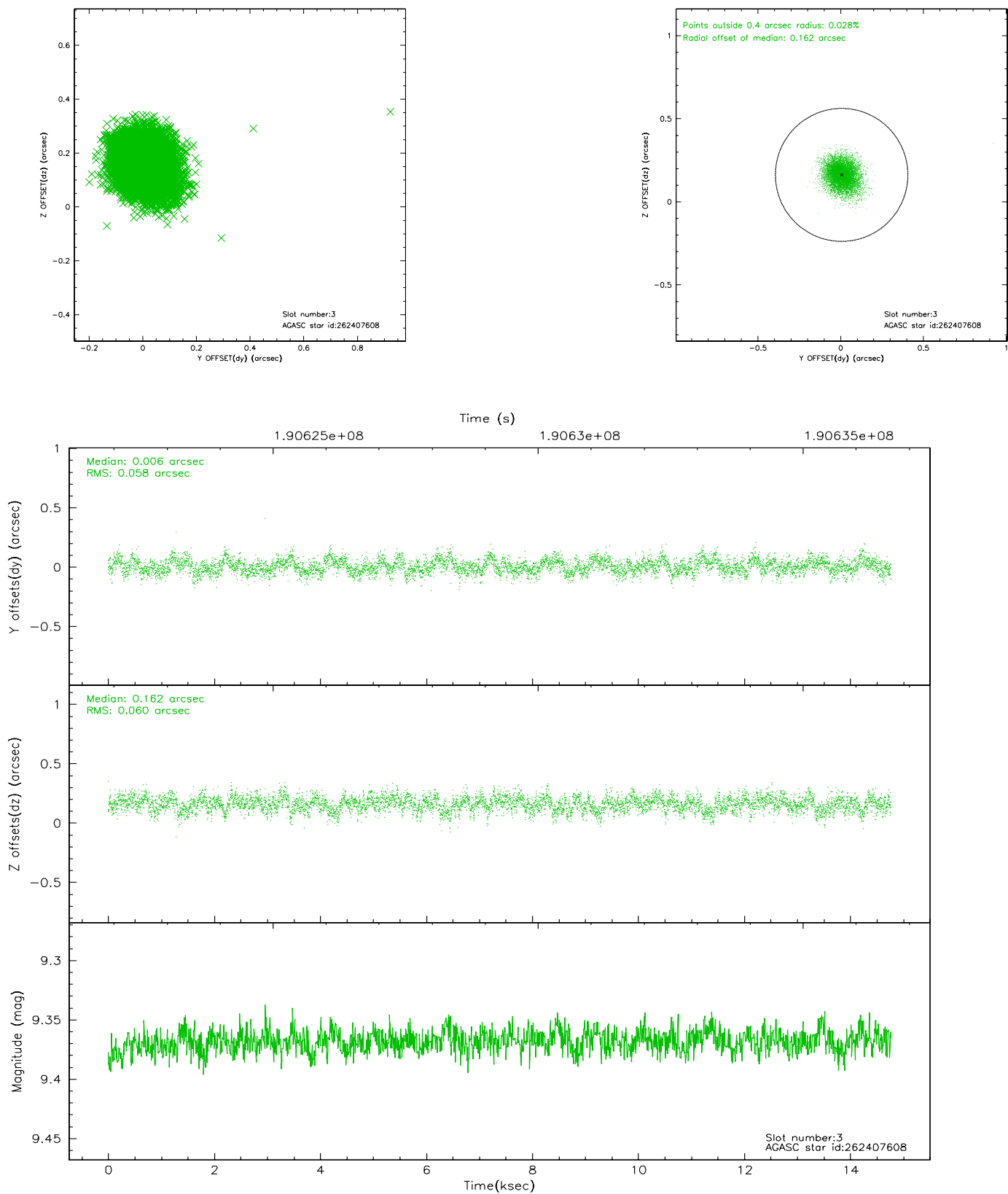


Slot Statistics

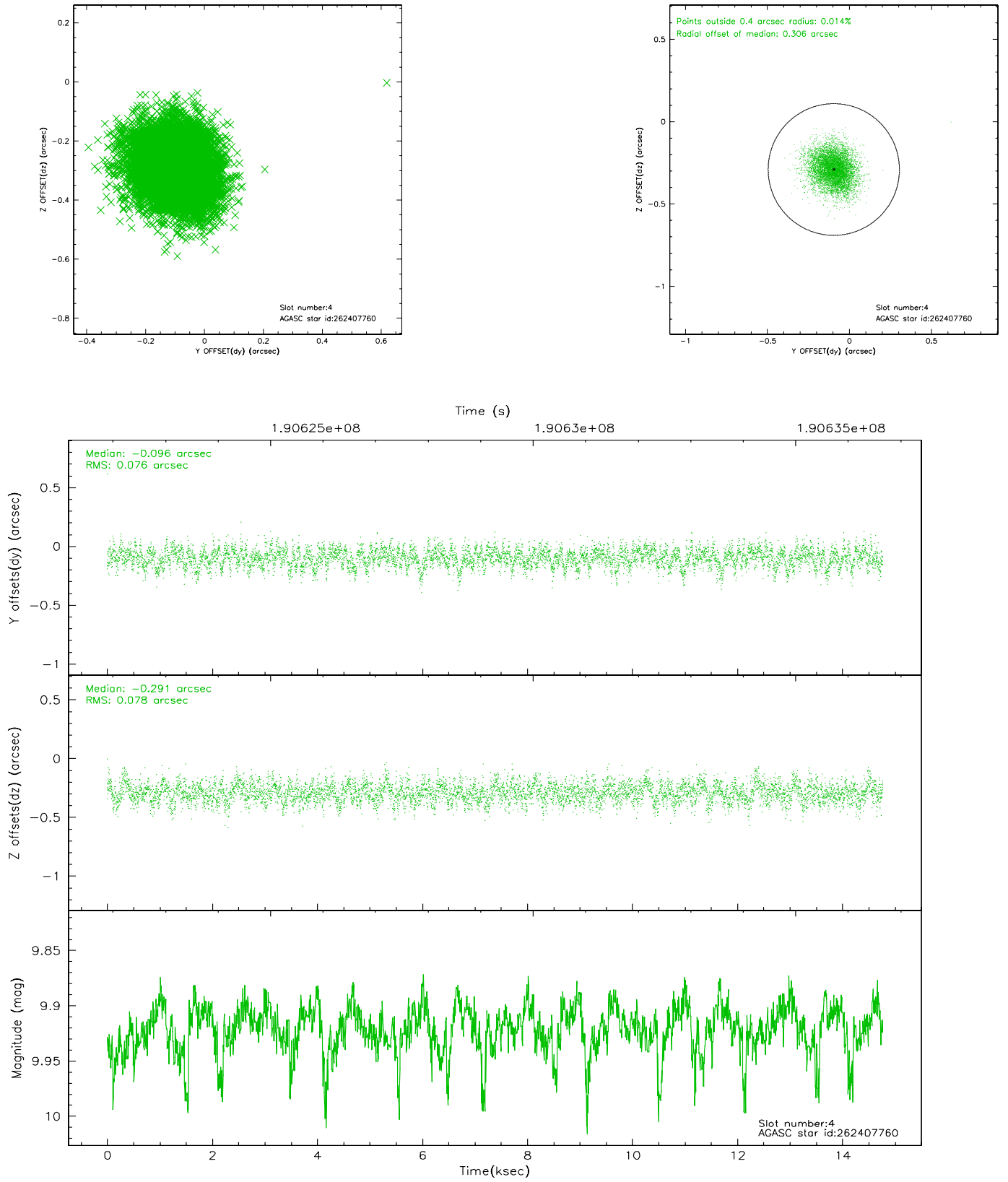
slot	status	id	mag	n_pts	med_dy	med_dz	dr1	dr2	ra	dec	mean_y	mean_z
0	FID	ACIS-S-2	7.13	3603	0.062	0.134	0.007	0.011	0.000000	0.000000	-760.01	-1527.86
1	FID	ACIS-S-4	7.22	3603	-0.003	-0.065	0.007	0.012	0.000000	0.000000	2153.14	380.06
2	FID	ACIS-S-5	7.22	3603	-0.090	-0.059	0.007	0.012	0.000000	0.000000	-1812.53	374.24
3	GUIDE	262407608	9.37	7201	0.006	0.162	0.088	0.142	207.378401	26.435507	-352.09	-609.20
4	GUIDE	262407760	9.92	7204	-0.096	-0.291	0.116	0.188	206.566773	26.577263	-714.88	2029.73
5	GUIDE	262408096	9.35	7203	0.000	-0.032	0.096	0.158	207.011678	26.515421	-464.18	602.20
6	GUIDE	262408936	9.64	7202	-0.040	-0.054	0.107	0.175	207.154731	26.726554	404.06	412.61
7	GUIDE	262411960	9.69	7199	0.126	0.217	0.103	0.172	207.327895	25.881727	-2289.74	-1105.04

2.4 Star Slots

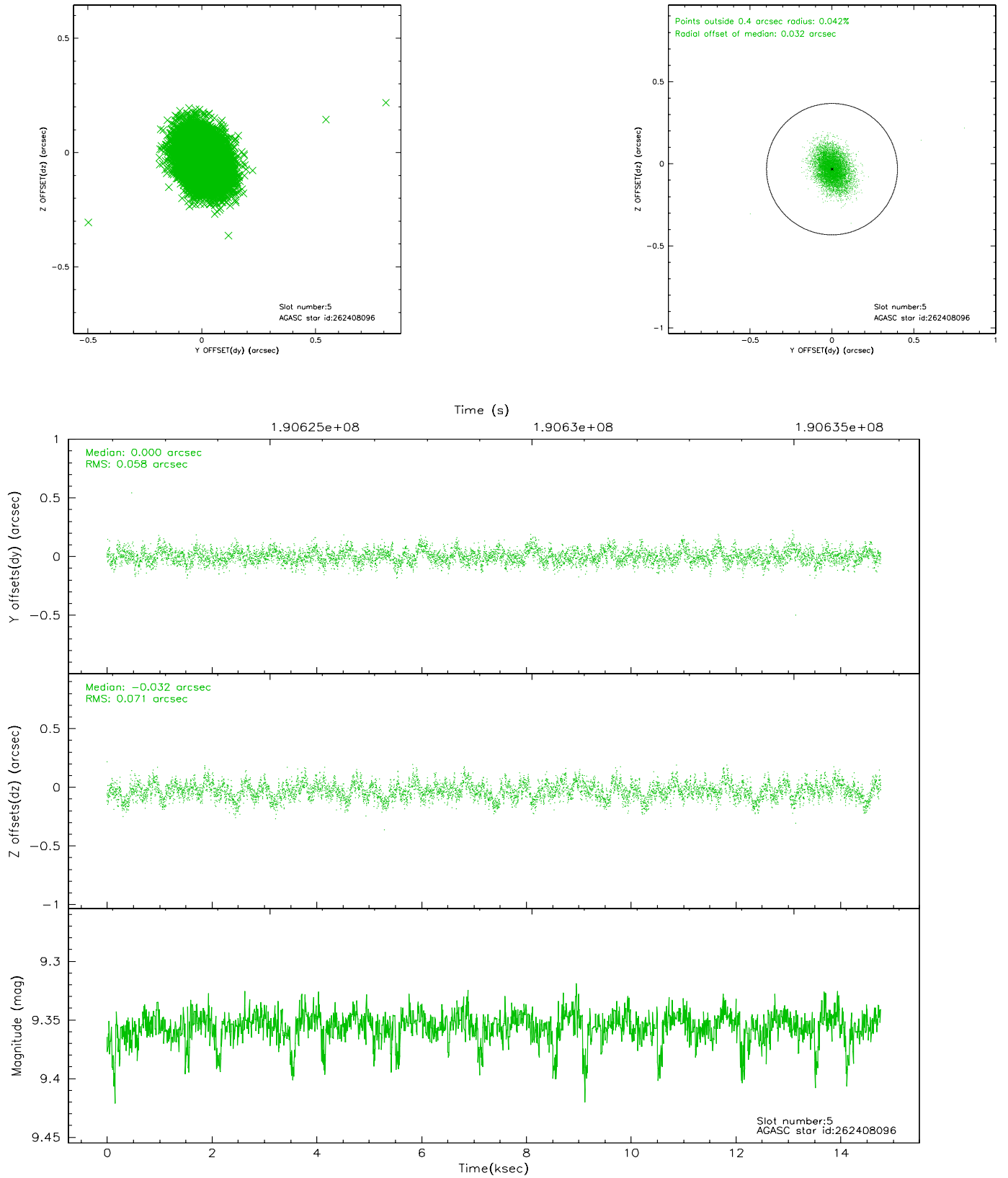
2.4.1 Slot 3



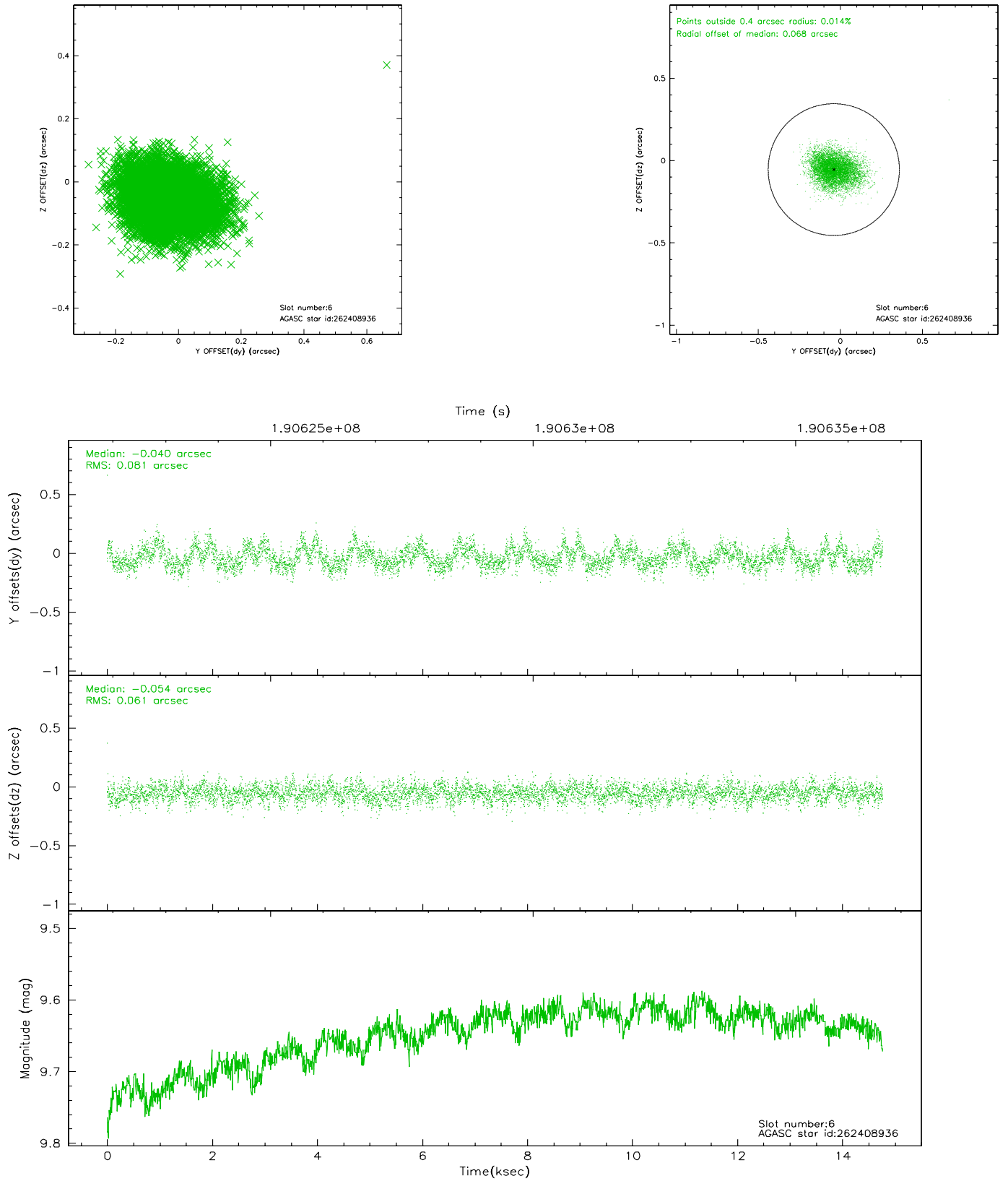
2.4.2 Slot 4



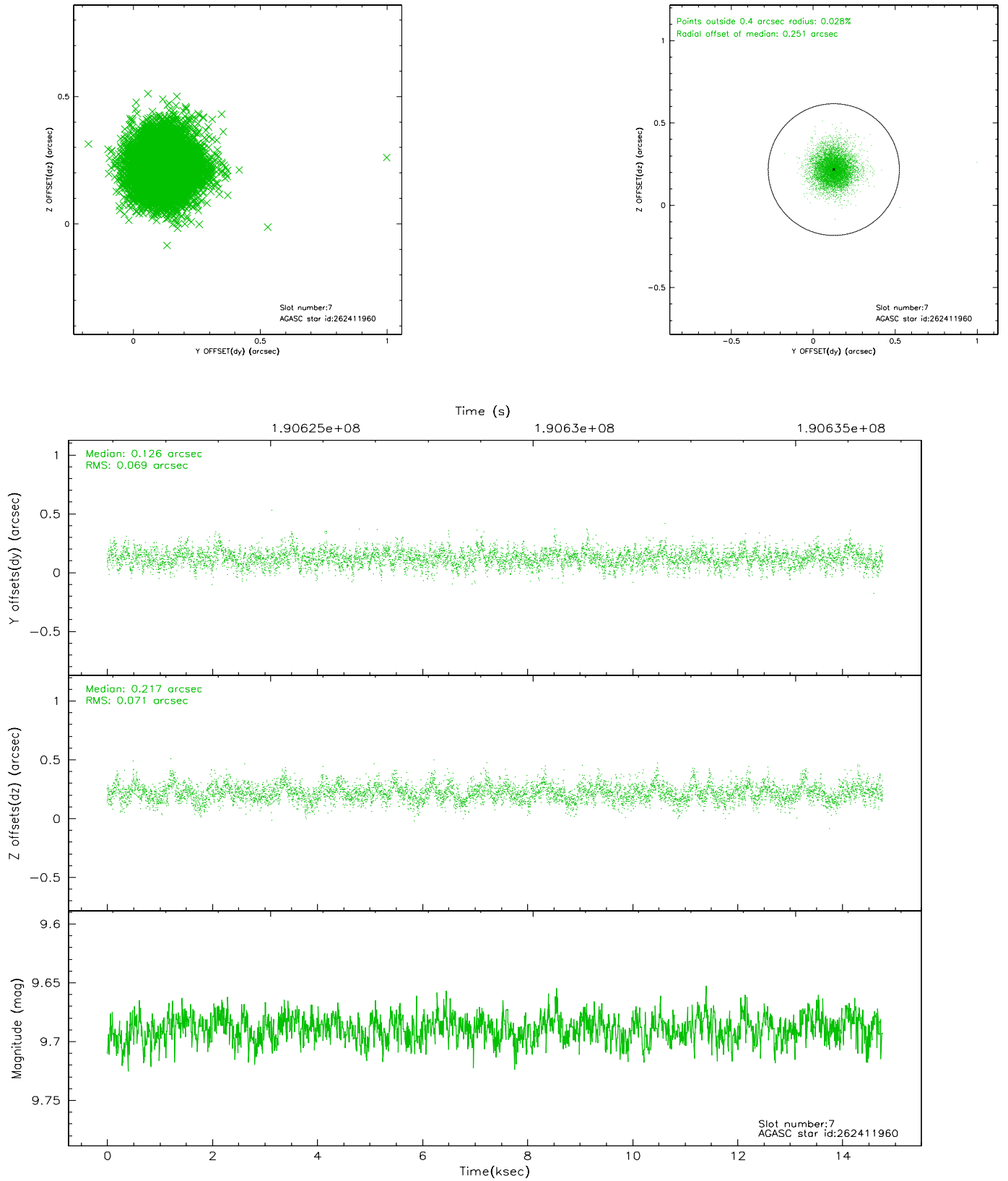
2.4.3 Slot 5



2.4.4 Slot 6

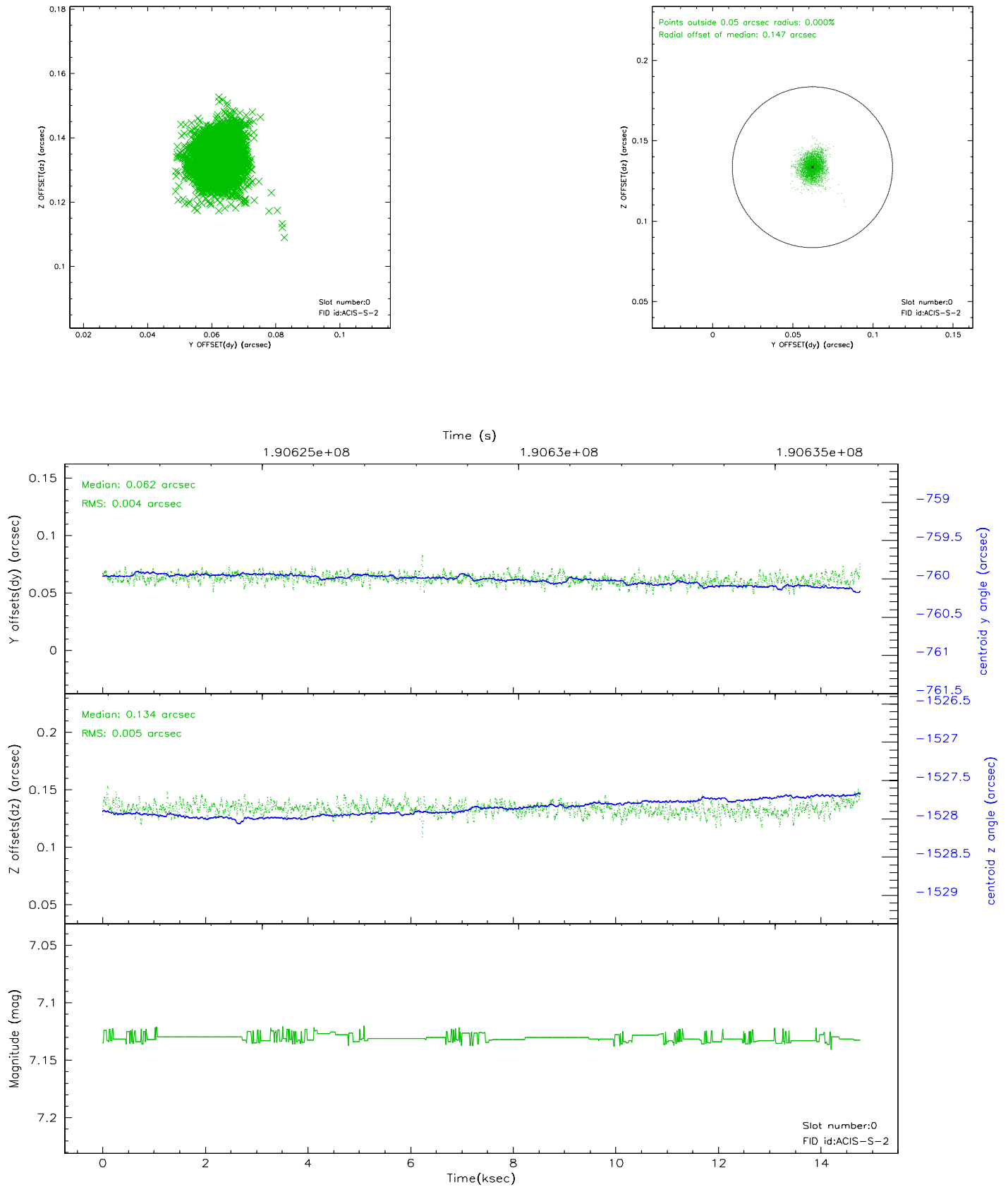


2.4.5 Slot 7

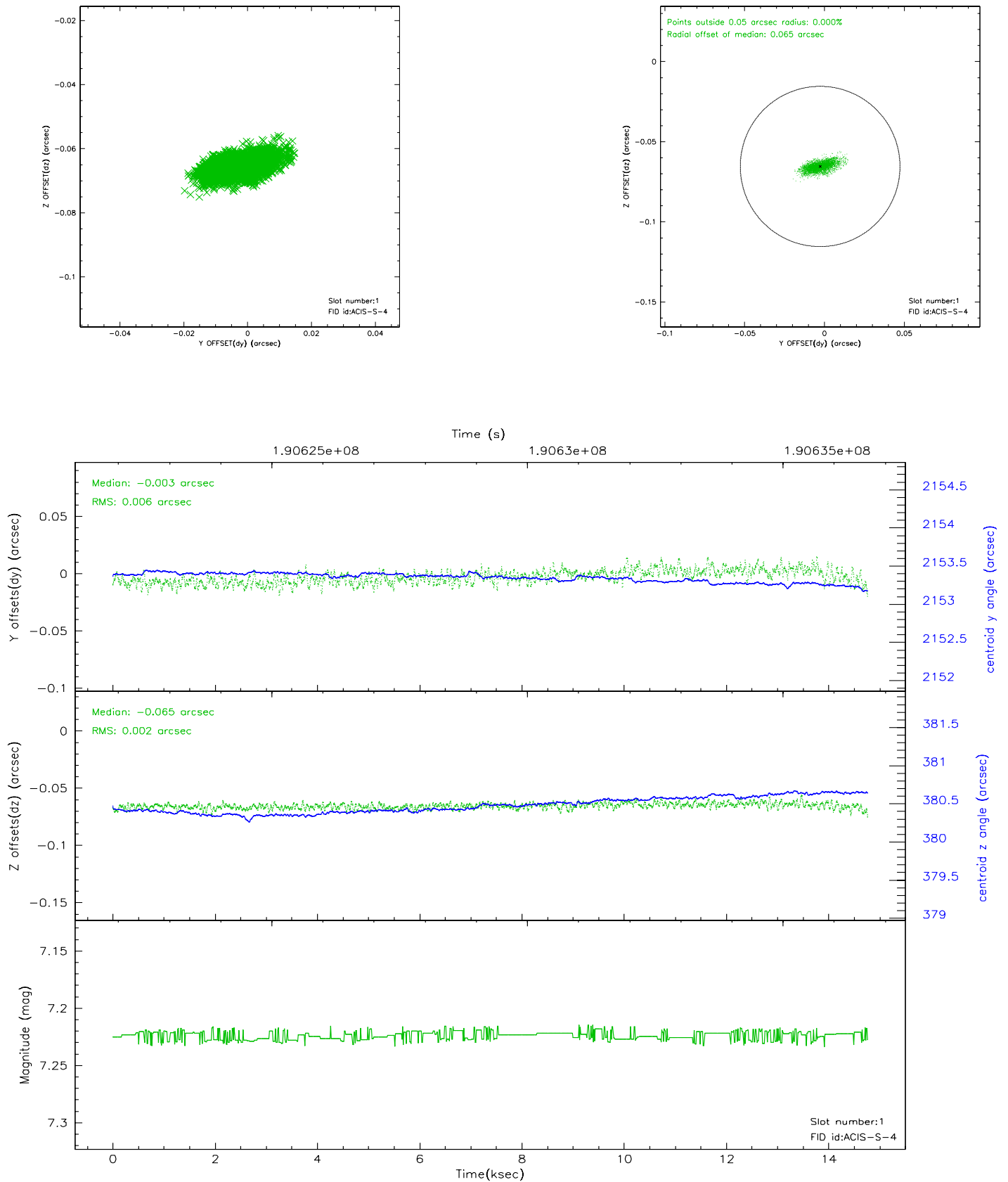


2.5 FID Slots

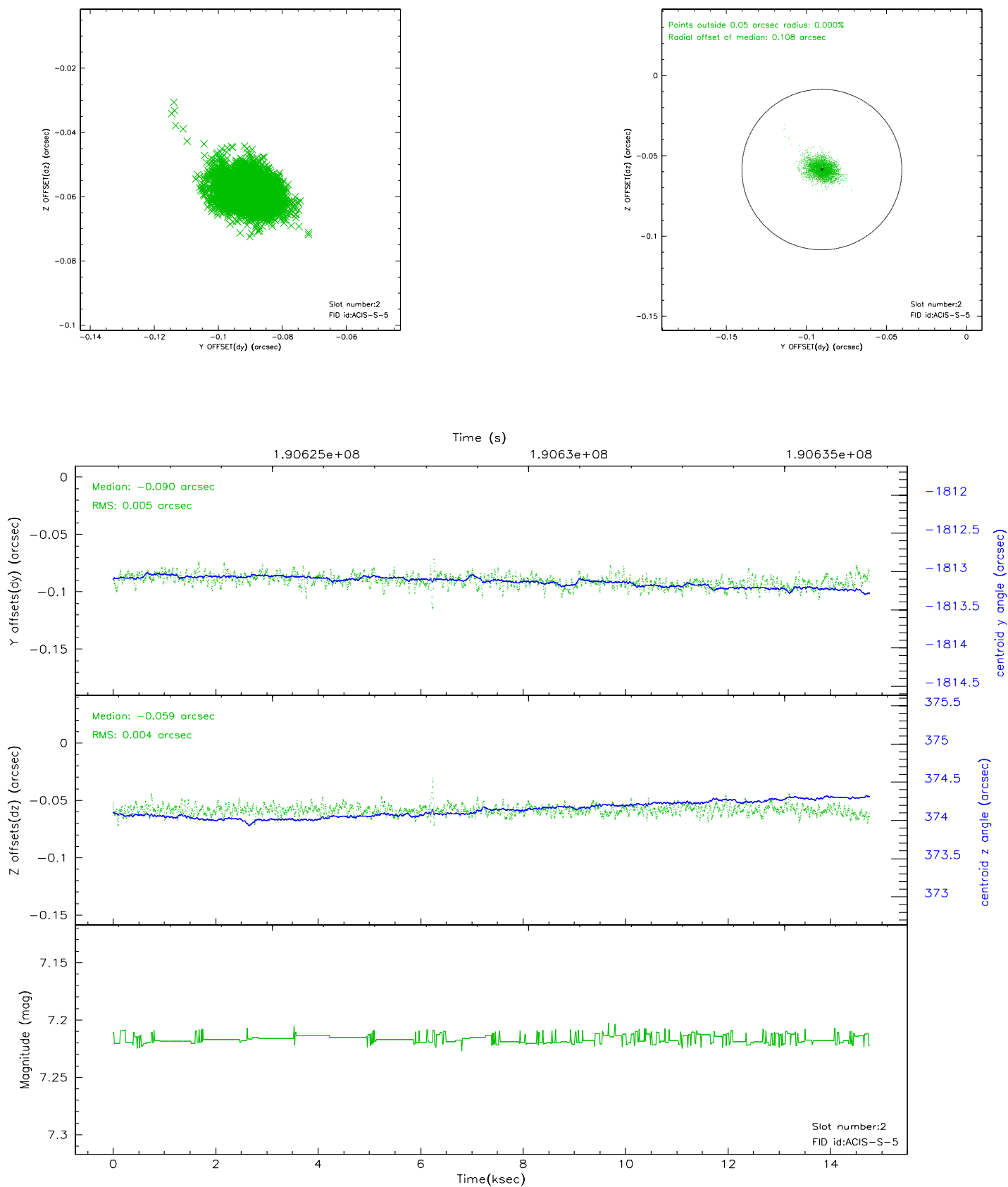
2.5.1 Slot 0



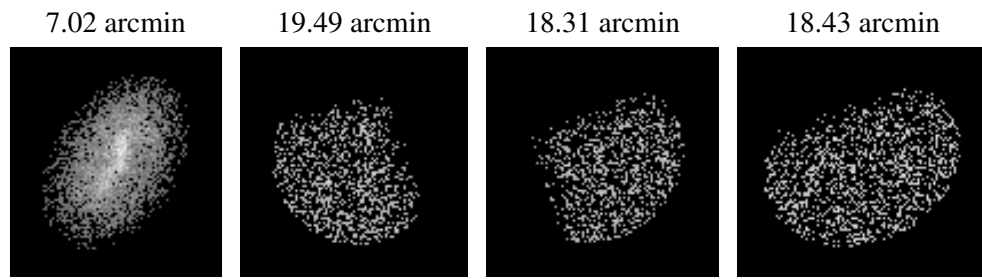
2.5.2 Slot 1



2.5.3 Slot 2



3 Point Sources



A Summary

A.1 Status

V&V Scientist	Jen Lauer
V&V Date (YYYY-MM-DD)	2006.06.07
V&V Edition	1
V&V Disposition and Status	OK
V&V Charge Time	14.762

A.2 Comments