

V&V Reference Report

L2 ASCDS Version : 8.5.1

Observation 6155 - L2 Version 3
Chandra X-Ray Center

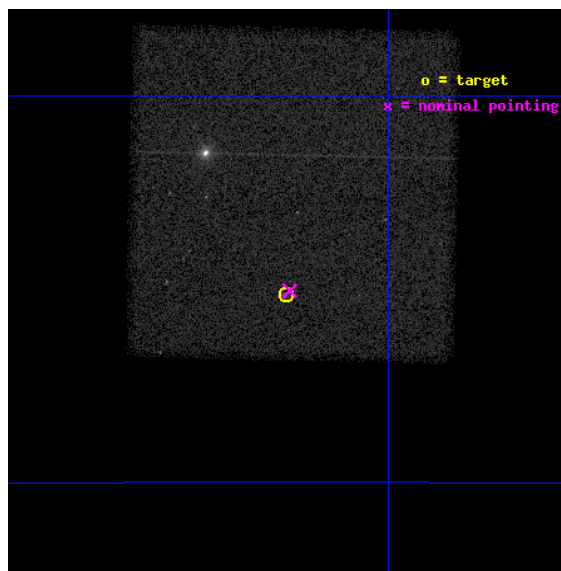
L2 Processing Date : Dec 18 2012

Contents

1	Front	2
2	OBI	3
2.1	OBI	3
2.1.1	Images	3
2.1.2	Bias	3
2.1.3	Parameters	4
2.1.4	Events	4
2.2	Compared Parameters	5
2.3	Aspect	6
2.4	Star Slots	9
2.4.1	Slot 3	9
2.4.2	Slot 4	10
2.4.3	Slot 5	11
2.4.4	Slot 6	12
2.4.5	Slot 7	13
2.5	FID Slots	14
2.5.1	Slot 0	14
2.5.2	Slot 1	15
2.5.3	Slot 2	16
A	Summary	17
A.1	Status	17
A.2	Comments	17

1 Front

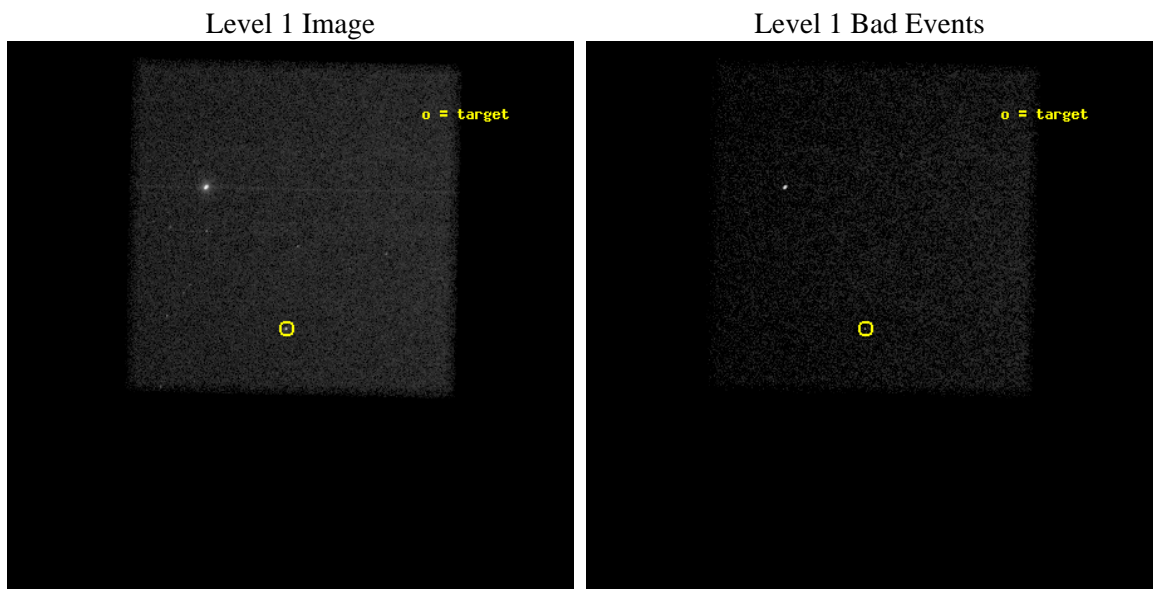
seq_num	590416	Sequence number
obs_id	6155	Observation id
title	Calibrating Pile-up in ACIS Imaging Data with PSRJ0437-4715	Propos
observer	Dr. CXC Calibration	Principal investigator
object	PSR J0437-4715	Source name
dtcycle	0	
cycle	P	events from which exps? Prim/Second/Both
ra_targ	69.315833	Observer's specified target RA [deg]
dec_targ	-47.252333	Observer's specified target Dec [deg]
ra_nom	69.313341316905	Nominal RA [deg]
dec_nom	-47.250890728959	Nominal Dec [deg]
roll_nom	271.19305936853	Nominal Roll [deg]
revision	3	Processing version of data
ontime	25128.0	Sum of GTIs [s]
livetime	24788.888011996	Livetime [s]
ontime7	25128.0	Sum of GTIs [s]
l2events	133881	Number of level 2 events



2 OBI

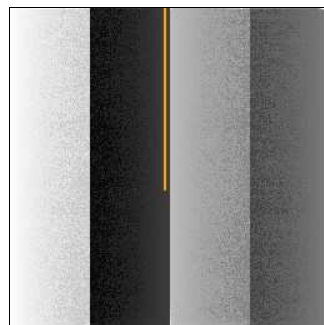
2.1 OBI

2.1.1 Images



2.1.2 Bias

Chip 7



2.1.3 Parameters

obi_num	0	Obi number	sched_exp_time	25000.000000	[s] Scheduled observation exposure time
ascdsver	8.5.1	Processing system revision	ontime	25128.0	Sum of GTIs [s]
caldsver	4.5.5	 	ontime7	25128.0	Sum of GTIs [s]
date	2012-12-18T06:01:15	Date and time of file creation	l1events	304323	Number of level 1 events
revision	3	Processing version of data			

2.1.4 Events

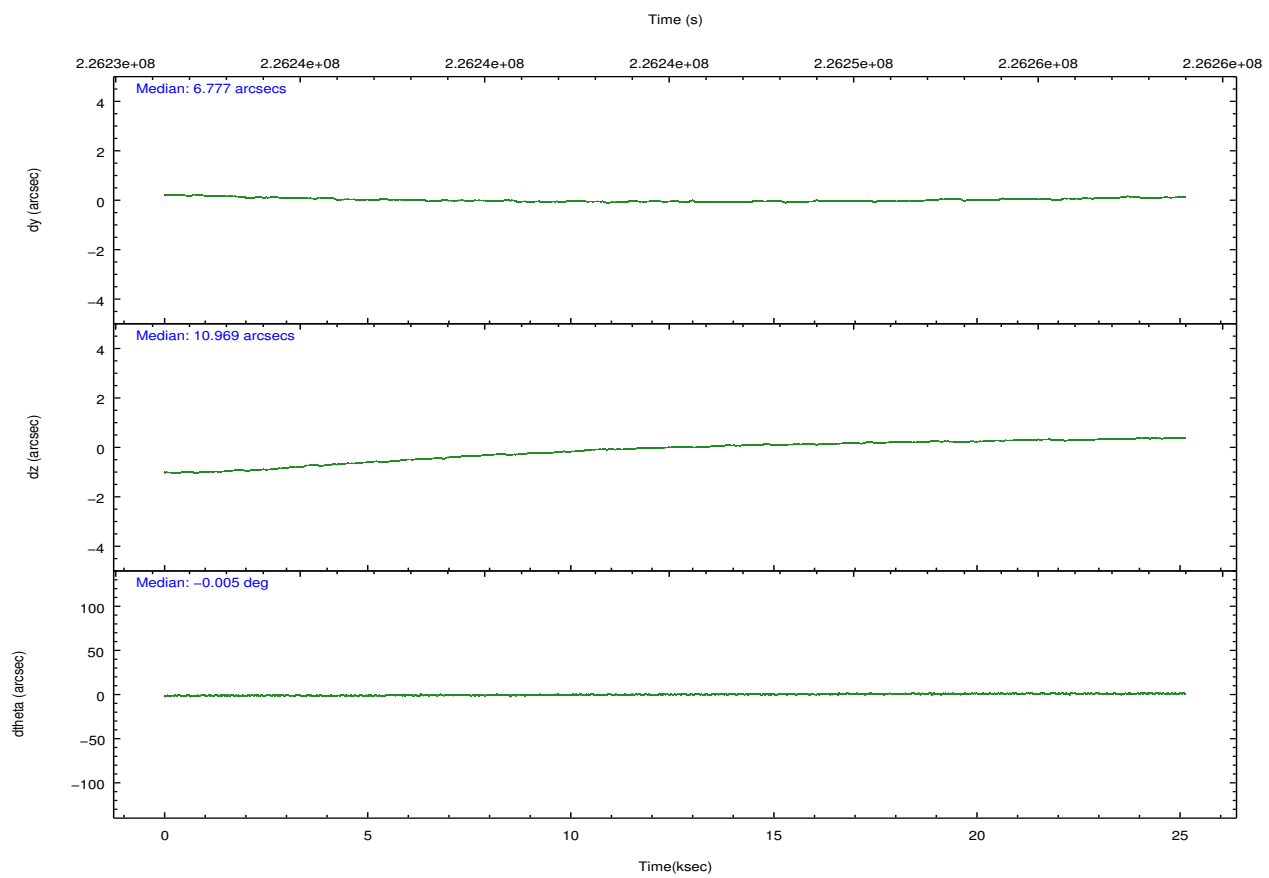
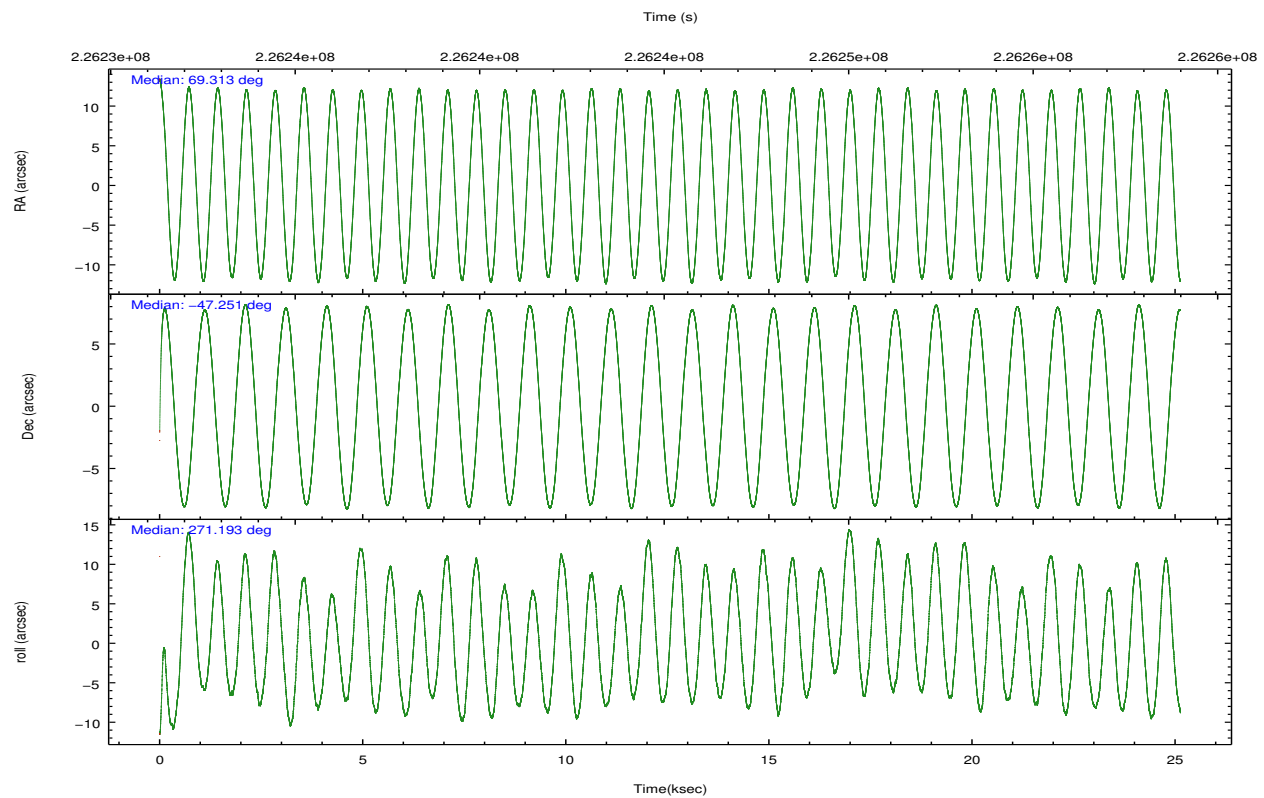
	ccd 7
level 1 events	304323
rejected events	167866
rejected %	55%

	ccd 7
grade 0 events	19922
	6%
grade 1 events	2150
	0%
grade 2 events	28774
	9%
grade 3 events	12959
	4%
grade 4 events	12661
	4%
grade 5 events	28842
	9%
grade 6 events	65107
	21%
grade 7 events	133908
	44%

2.2 Compared Parameters

Parameter	Planned	Actual	Parameter	Planned	Actual
Instrument	ACIS	ACIS	Obspar format version number	7	7
Detector	ACIS-7	ACIS-7	Obspar file type	PREDICTED	ACTUAL
Grating	NONE	NONE	Obspar update status	NONE	UPDATED
Data mode	VFAINT	VFAINT	Number of optional ACIS chips dropped	0	0
Observation mode	POINTING	POINTING	On-chip summing requested	N	N
[deg] Pointing RA	69.292104	69.31334131690463	Subarray requested	NONE	NONE
[deg] Pointing Dec	-47.227797	-47.25089072895914	Alternating exposures requested	N	N
[deg] Pointing Roll	271.020844	271.1930593685328	[s] Primary exposure time	0.000000	3
[s] Window start time (MET)	218246464.184000	218246464.184000			
[s] Window stop time (MET)	228700804.184000	228700804.184000			
[mm] SIM focus pos	-0.684267	-0.6828225247311905			
[mm] SIM defocus	0	0.001444936568705701			
[mm] SIM translation stage pos	-190.132523	-190.1400660498719			
[mm] SIM translation stage offset	0	0.00754346686406393			
[s] Observation start time (MET)	226232726.184000	226231653.78929			
Observation start date	2005-03-03T10:24:22	2005-03-03T10:07:33			
[s] Observation end time (MET)	226257726.184000	226259063.82803			
Observation end date	2005-03-03T17:21:02	2005-03-03T17:44:23			
Read mode	TIMED	TIMED			

2.3 Aspect

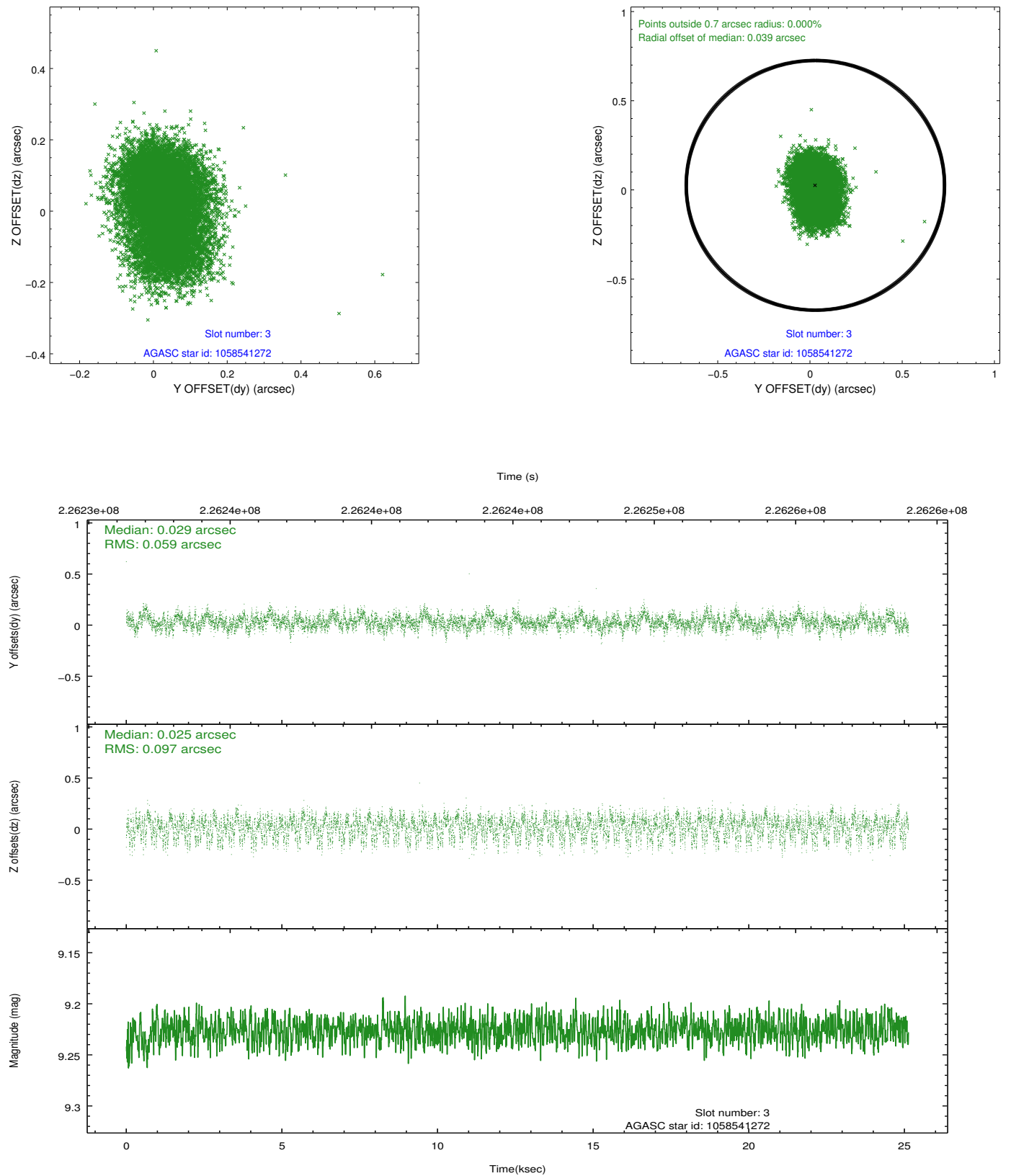


Slot Statistics

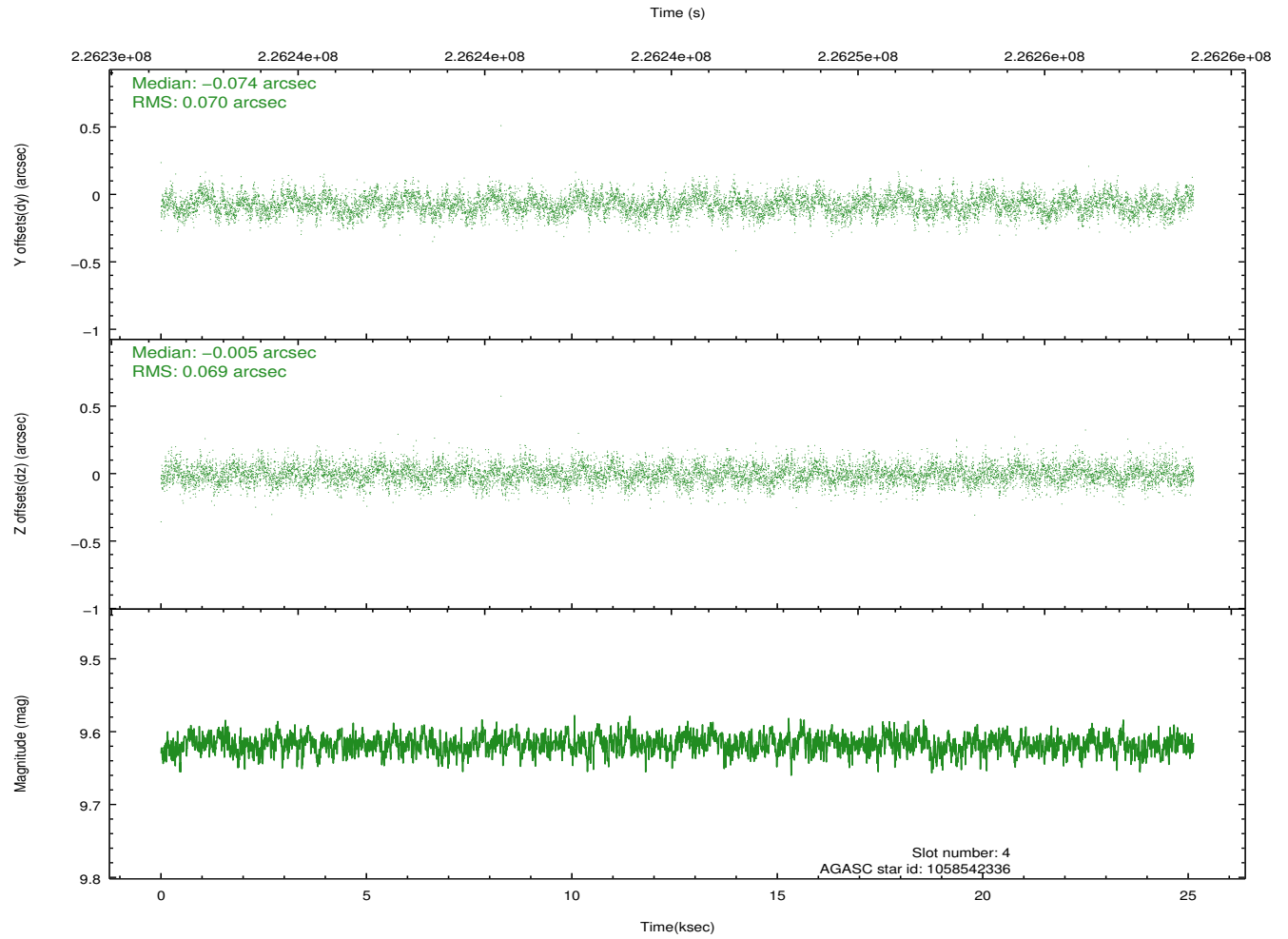
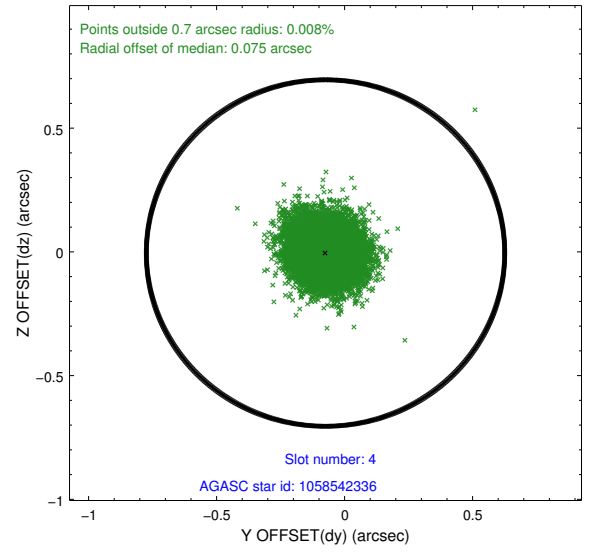
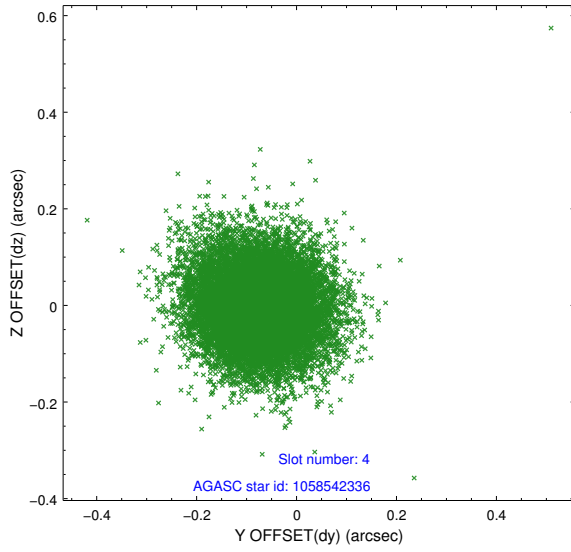
slot	status	id	mag	n_pts	med_dy	med_dz	dr1	dr2	ra	dec	mean_y	mean_z
0	FID	ACIS-S-2	7.10	6128	-0.055	-0.017	0.009	0.014	0.000000	0.000000	-759.56	-1732.12
1	FID	ACIS-S-4	7.21	6130	0.089	0.031	0.010	0.017	0.000000	0.000000	2153.77	176.33
2	FID	ACIS-S-5	7.23	6130	-0.065	-0.005	0.008	0.015	0.000000	0.000000	-1812.30	170.04
3	GUIDE	1058541272	9.23	12249	0.029	0.025	0.121	0.195	68.392275	-46.921735	-1127.96	-2192.34
4	GUIDE	1058542336	9.62	12251	-0.074	-0.005	0.104	0.169	69.740954	-46.597293	-2246.30	1150.74
5	GUIDE	1058544032	8.98	12253	0.033	-0.004	0.090	0.139	69.576631	-47.141596	-296.35	702.56
6	GUIDE	1058931064	9.47	12196	0.002	-0.050	0.094	0.154	69.760694	-47.722390	1804.26	1103.27
7	GUIDE	1058537632	9.83	12249	0.005	0.041	0.166	0.268	68.291617	-47.025396	-756.05	-2441.58

2.4 Star Slots

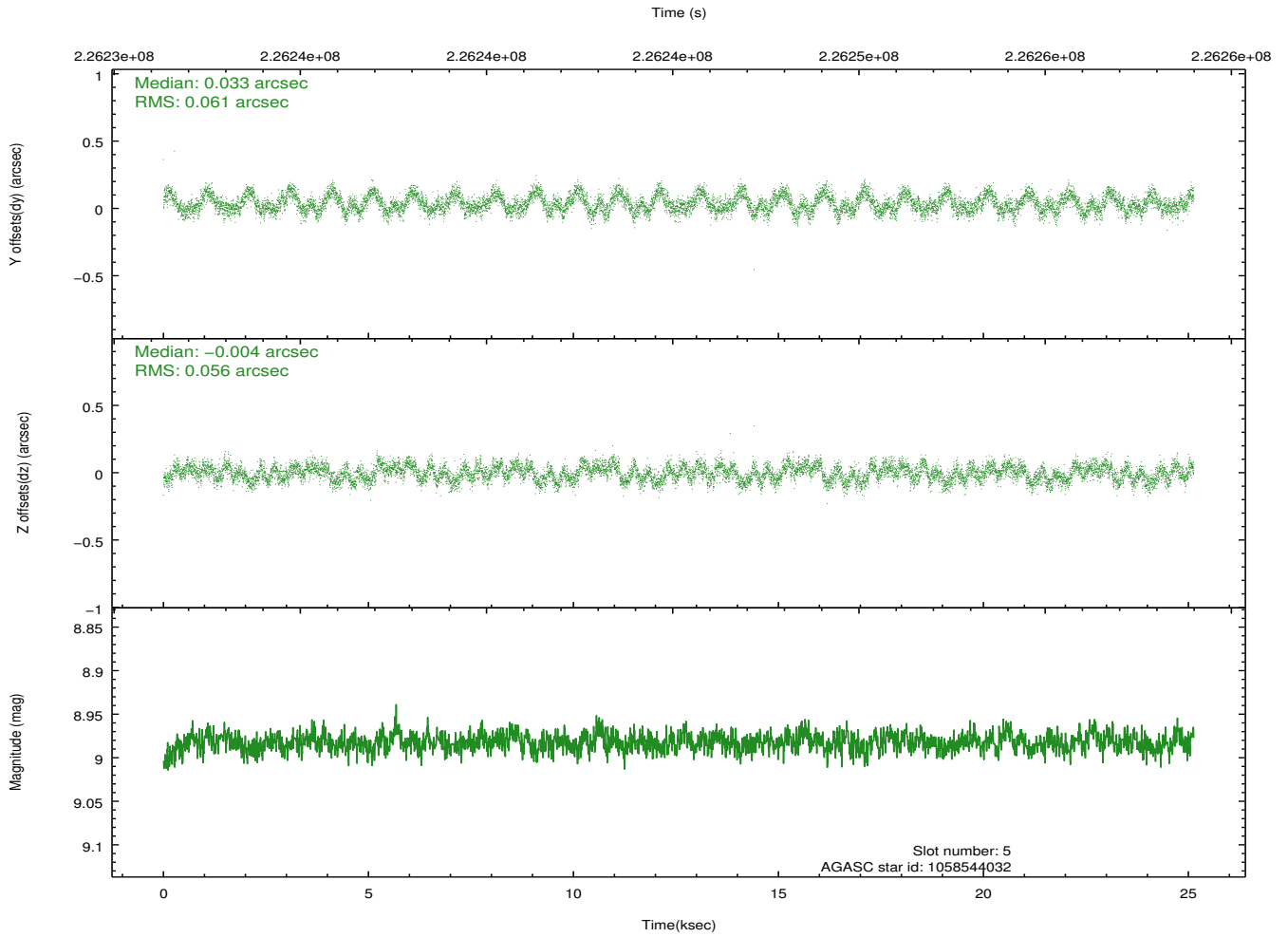
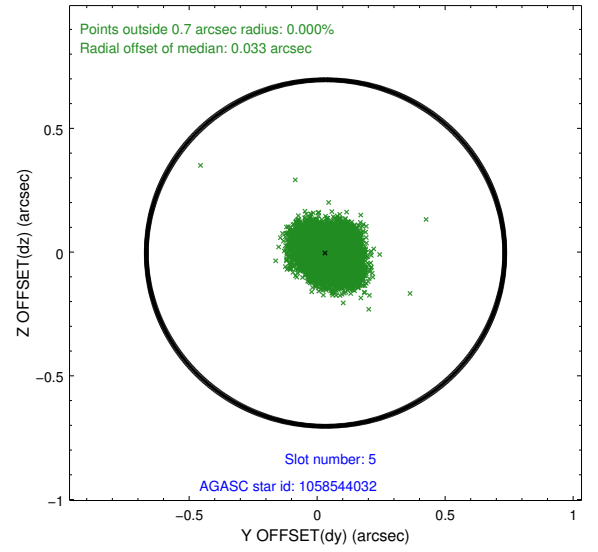
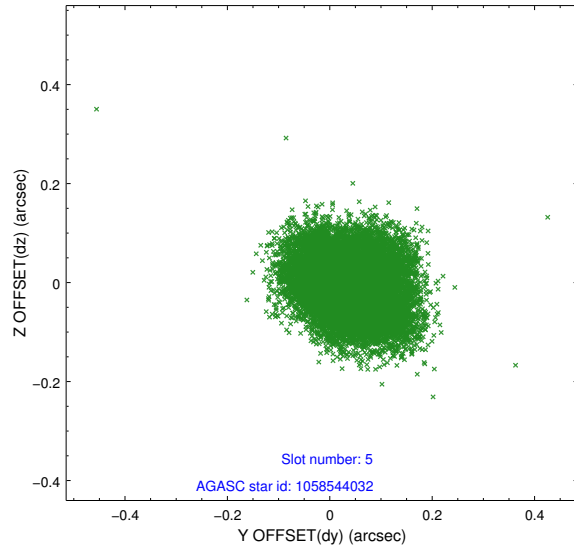
2.4.1 Slot 3



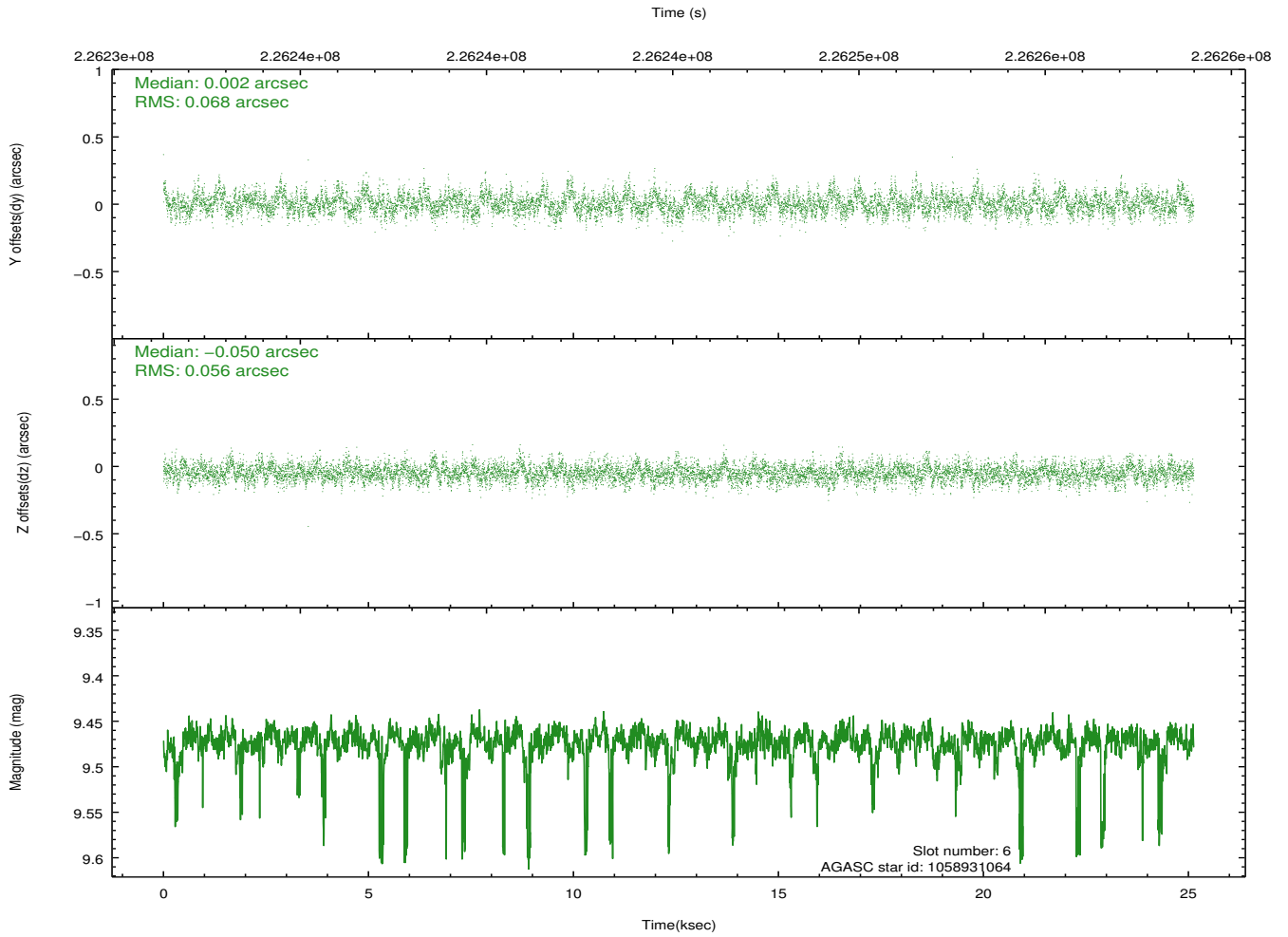
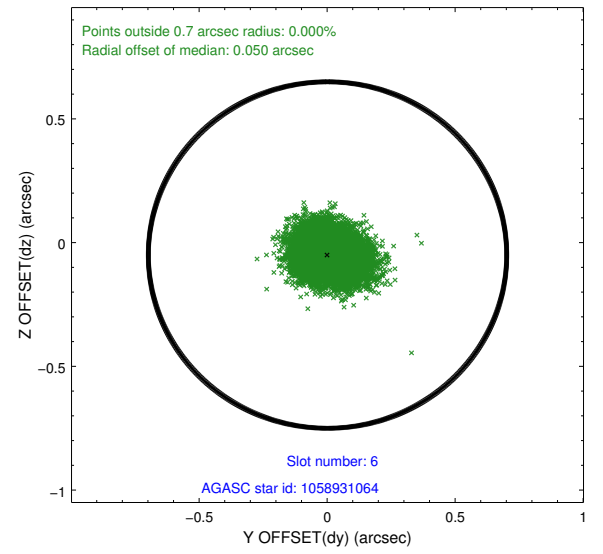
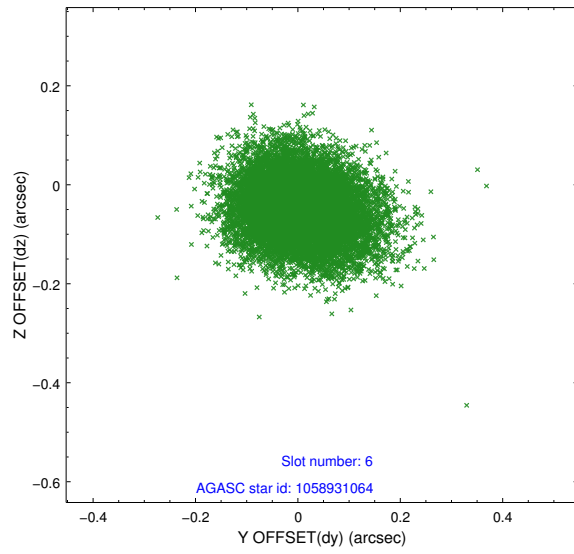
2.4.2 Slot 4



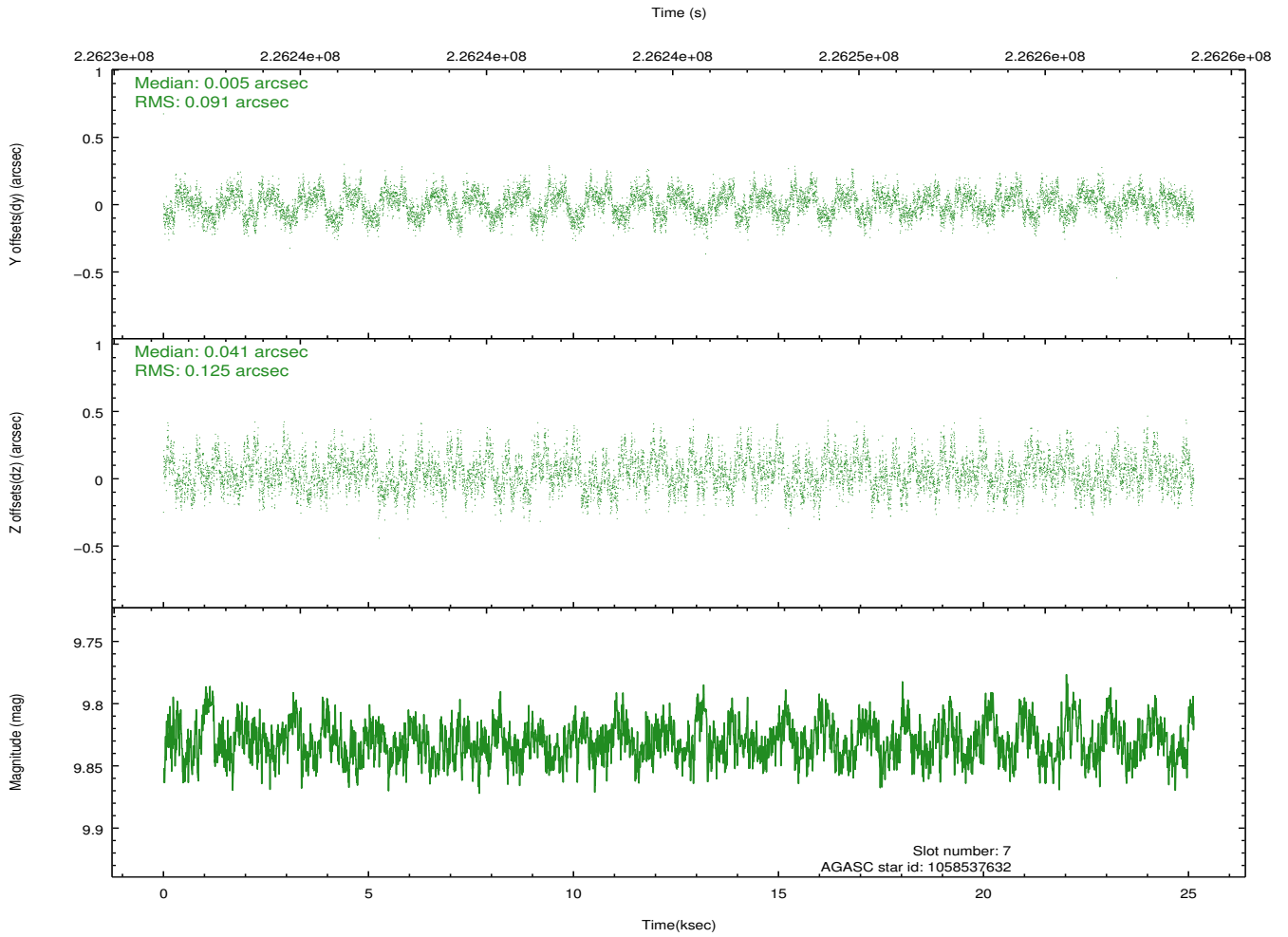
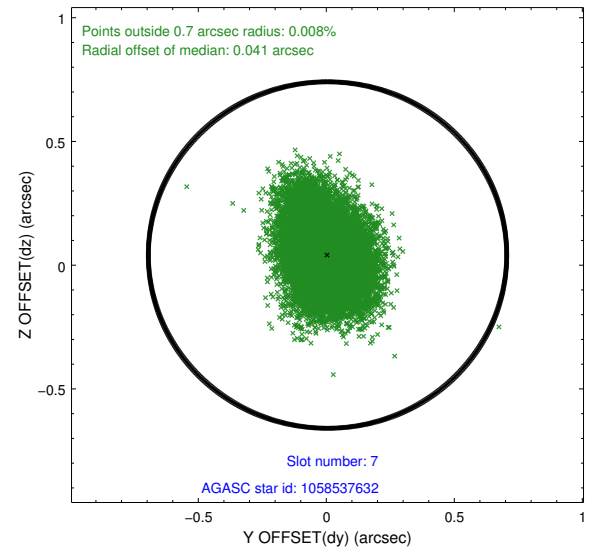
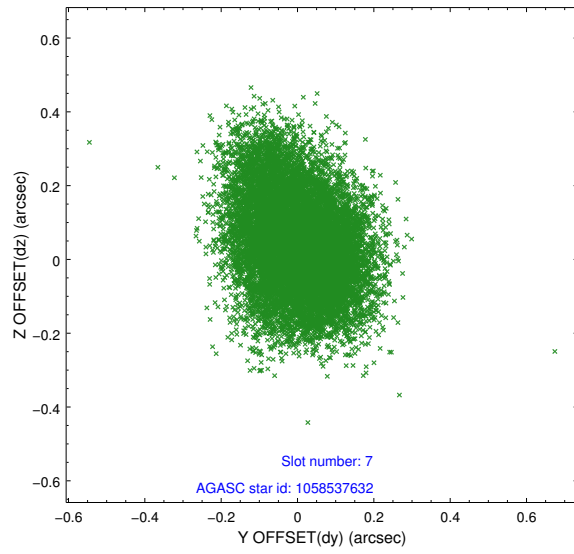
2.4.3 Slot 5



2.4.4 Slot 6

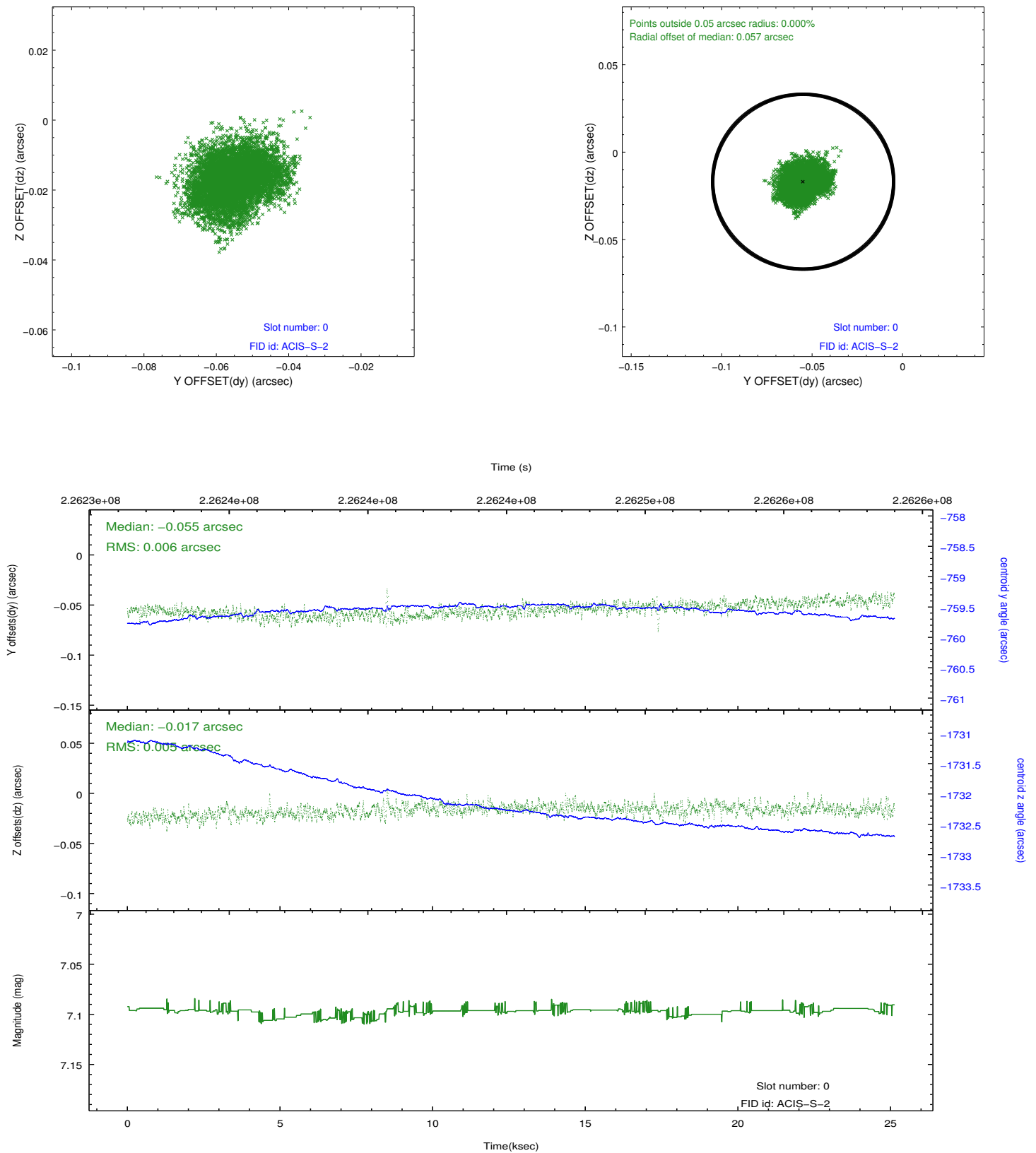


2.4.5 Slot 7

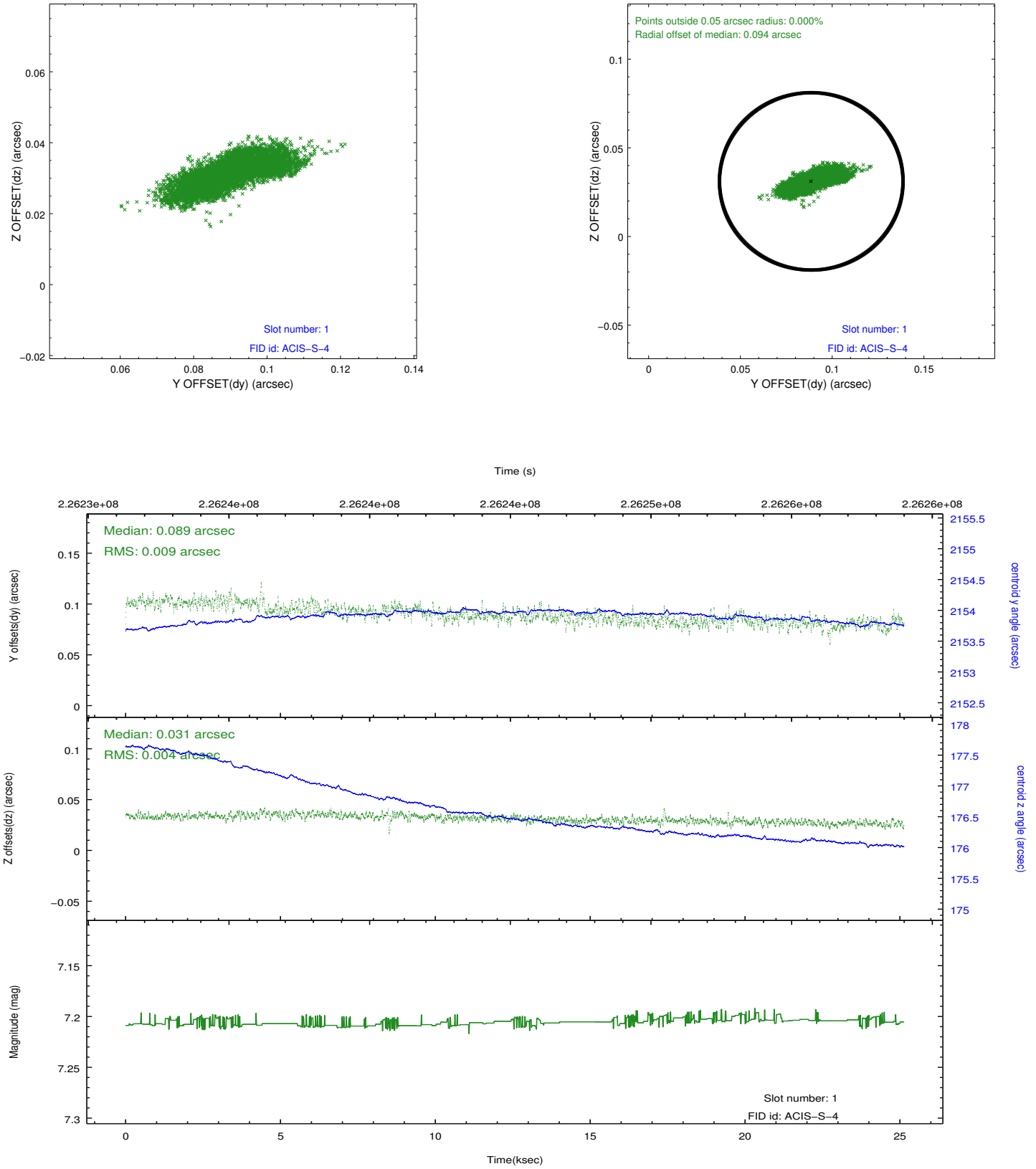


2.5 FID Slots

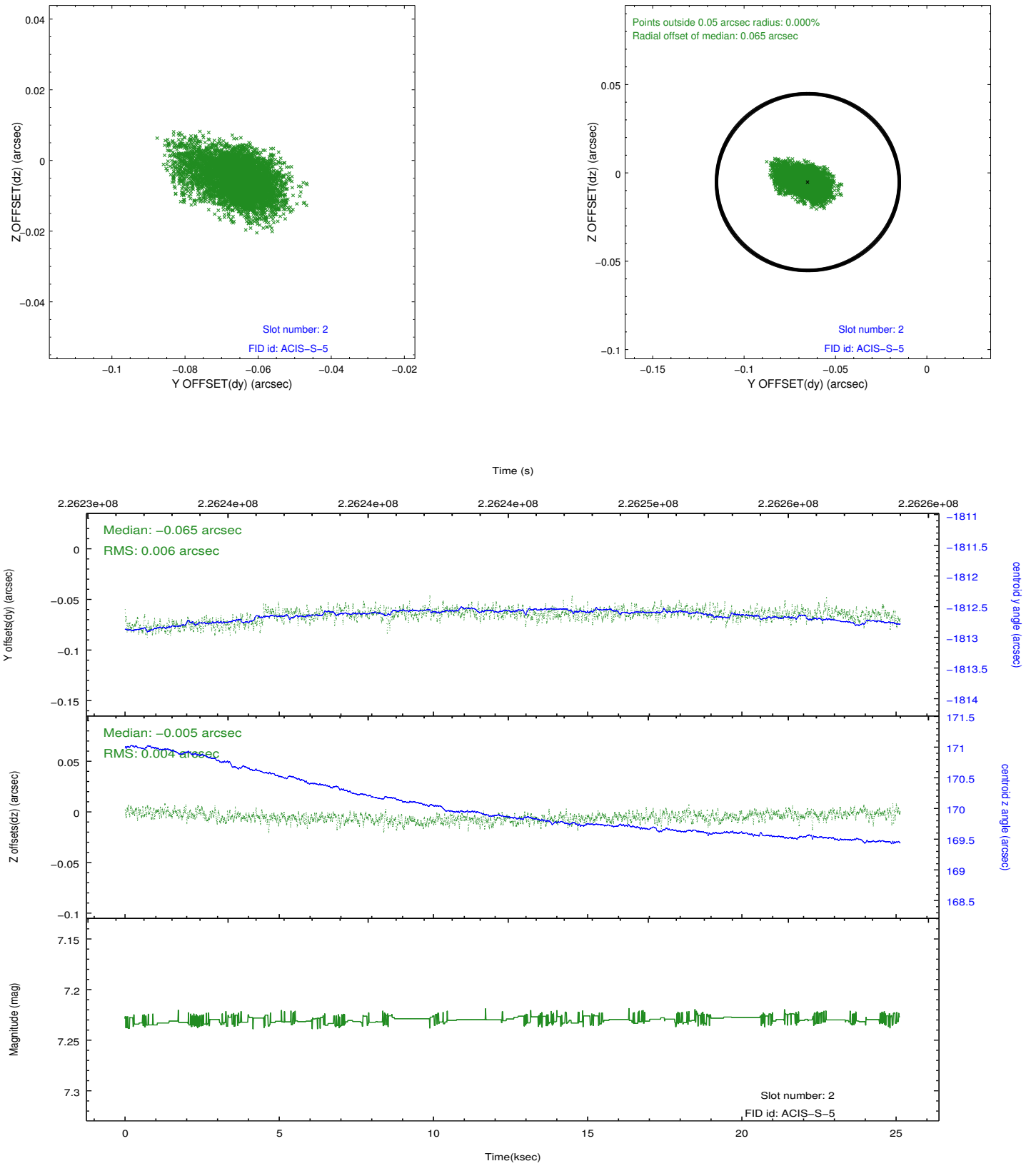
2.5.1 Slot 0



2.5.2 Slot 1



2.5.3 Slot 2



A Summary

A.1 Status

V&V Scientist	Jen Lauer
V&V Date (YYYY-MM-DD)	2013.01.10
V&V Edition	1
V&V Disposition and Status	OK
V&V Charge Time	25.128

A.2 Comments

Window constraint satisfied.