

# V&V Reference Report

## L2 ASCDS Version : 7.6.7.2

Observation 5137 - L2 Version 001  
Chandra X-Ray Center

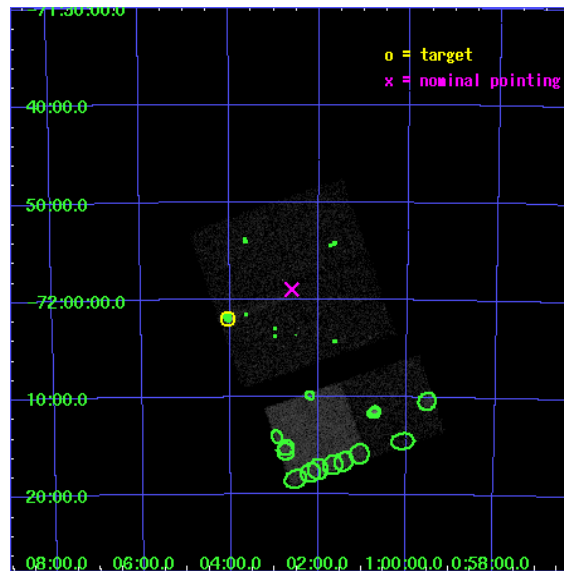
L2 Processing Date : May 20 2006

## Contents

<b>1</b>	<b>Front</b>	<b>2</b>
<b>2</b>	<b>OBI</b>	<b>3</b>
2.1	OBI . . . . .	3
2.1.1	Images . . . . .	3
2.1.2	Bias . . . . .	3
2.1.3	Parameters . . . . .	4
2.1.4	Events . . . . .	4
2.2	Compared Parameters . . . . .	5
2.3	Aspect . . . . .	6
2.4	Star Slots . . . . .	9
2.4.1	Slot 3 . . . . .	9
2.4.2	Slot 4 . . . . .	10
2.4.3	Slot 5 . . . . .	11
2.4.4	Slot 6 . . . . .	12
2.4.5	Slot 7 . . . . .	13
2.5	FID Slots . . . . .	14
2.5.1	Slot 0 . . . . .	14
2.5.2	Slot 1 . . . . .	15
2.5.3	Slot 2 . . . . .	16
<b>3</b>	<b>Point Sources</b>	<b>17</b>
<b>A</b>	<b>Summary</b>	<b>18</b>
A.1	Status . . . . .	18
A.2	Comments . . . . .	18

# 1 Front

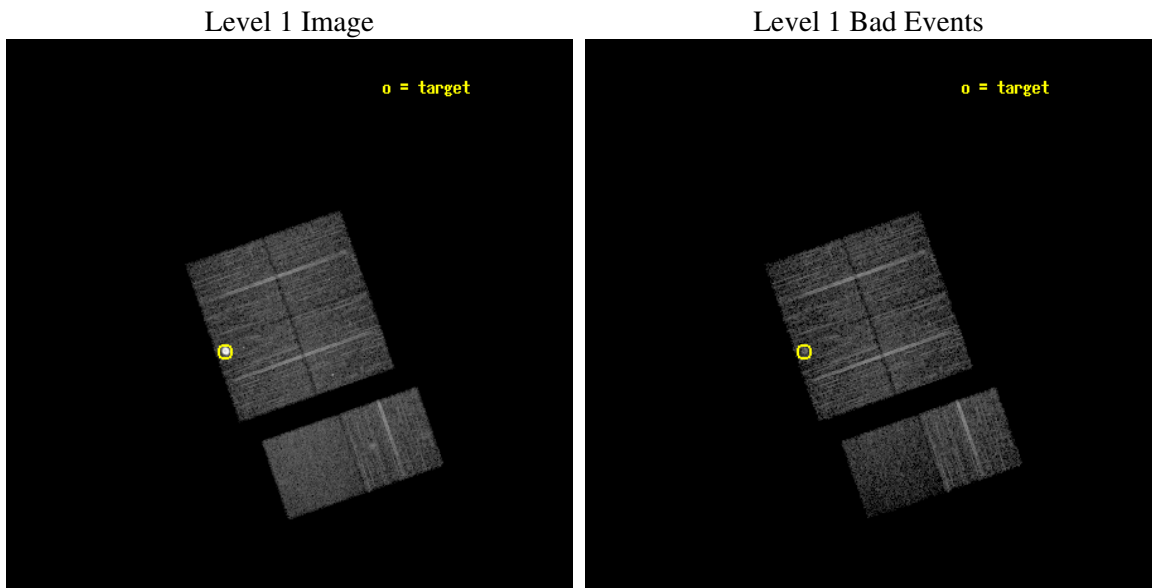
seq_num	590335
obs_id	5137
title	AO5B ACIS-I Calibration Observations of E0102-72
observer	Dr. CXC Calibration
object	E0102-72[I3,-120,-7,0.5,0]
dtcycle	0
cycle	P
ra_targ	16.01
dec_targ	-72.032028
ra_nom	15.650934986378
dec_nom	-71.982758699685
roll_nom	160.8486380536
revision	2
ontime	8140.7999696732
livetime	8037.7162586559
ontime0	8140.7999696732
ontime1	8140.7999696732
ontime2	8140.7999696732
ontime3	8140.7999696732
ontime6	8140.7999696732
ontime7	8140.7999696732
l2events	60712



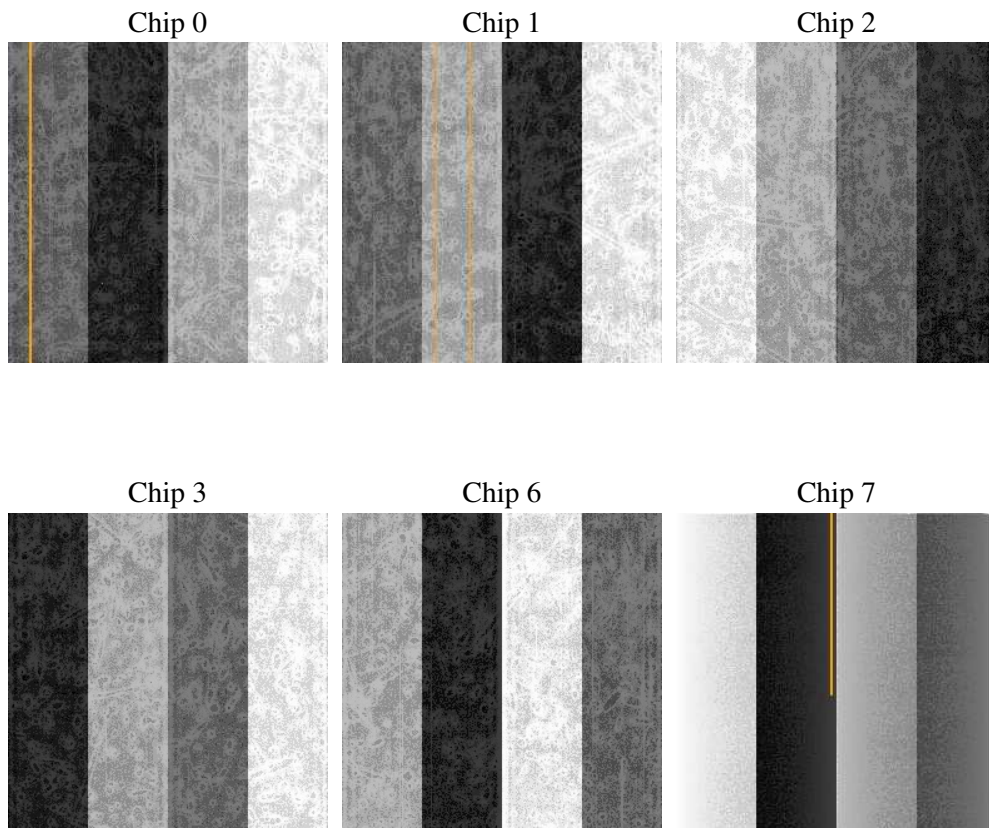
## 2 OBI

### 2.1 OBI

#### 2.1.1 Images



#### 2.1.2 Bias



### 2.1.3 Parameters

obi_num	0
ascdsver	7.6.7.2
caldbver	3.2.2
date	2006-05-20T11:46:08
revision	2

sched_exp_time	8000.000000
ontime	8374.7496594489
ontime0	8374.749679327
ontime1	8374.7496594489
ontime2	8374.7496594489
ontime3	8374.7496594489
ontime6	8374.749679327
ontime7	8374.749679327
l1events	293613

### 2.1.4 Events

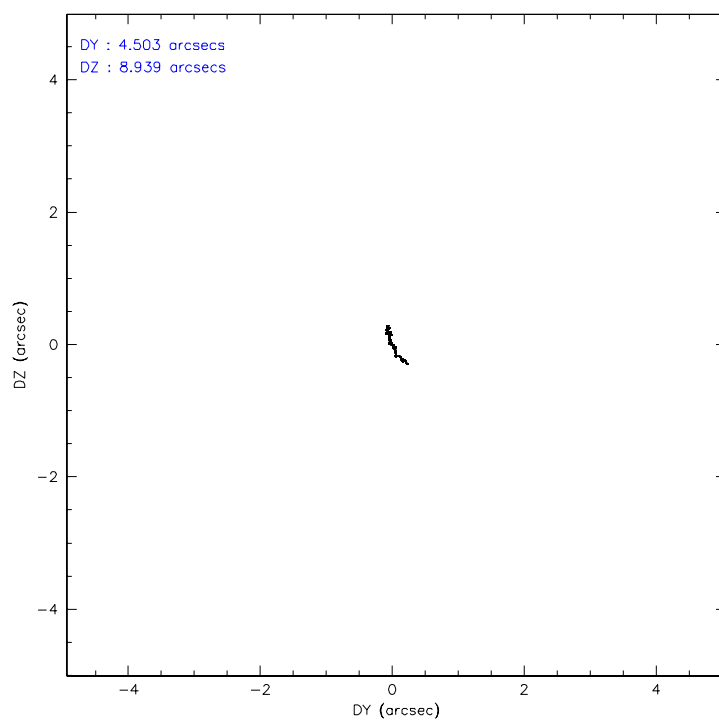
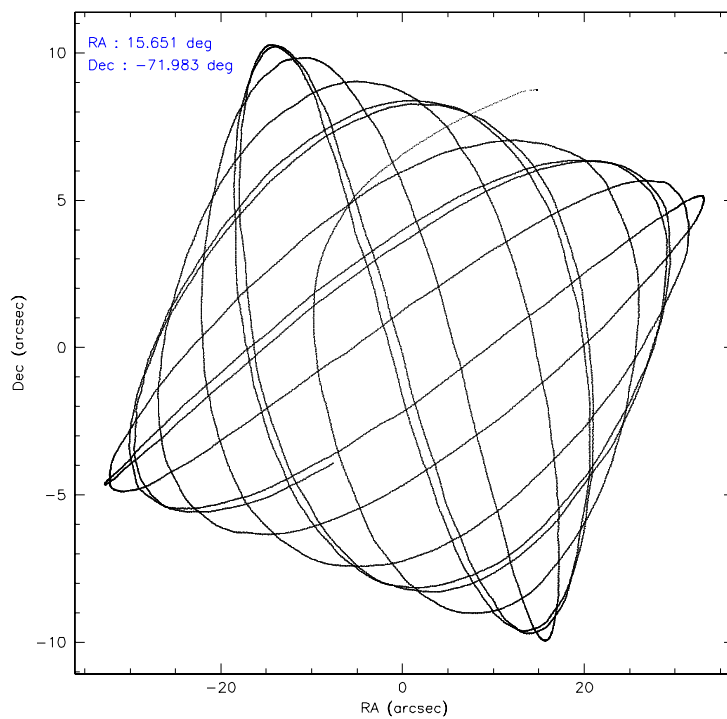
	ccd 0	ccd 1	ccd 2	ccd 3	ccd 6	ccd 7
level 1 events	43129	42676	47060	68709	48837	43202
rejected events	38490	37956	42347	42094	43454	23995
rejected %	89%	88%	89%	61%	88%	55%

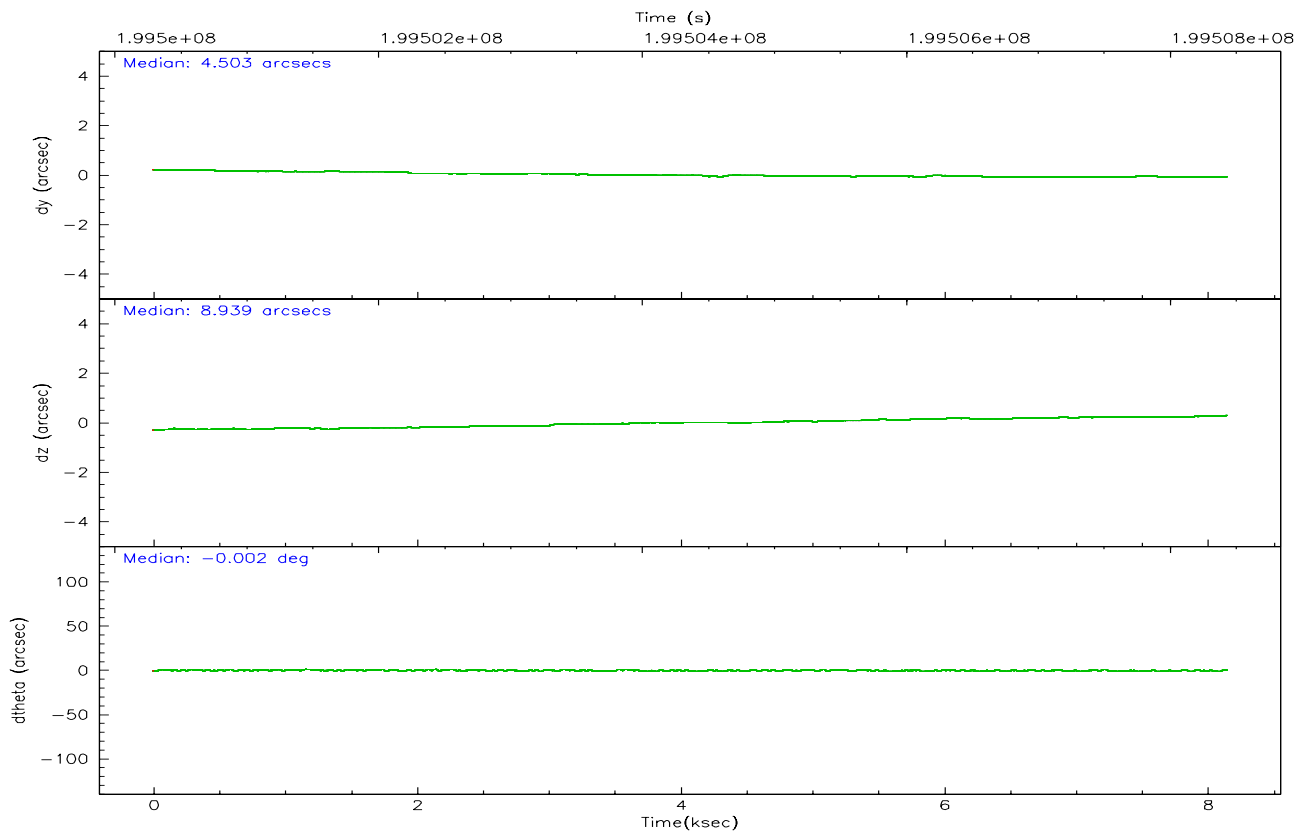
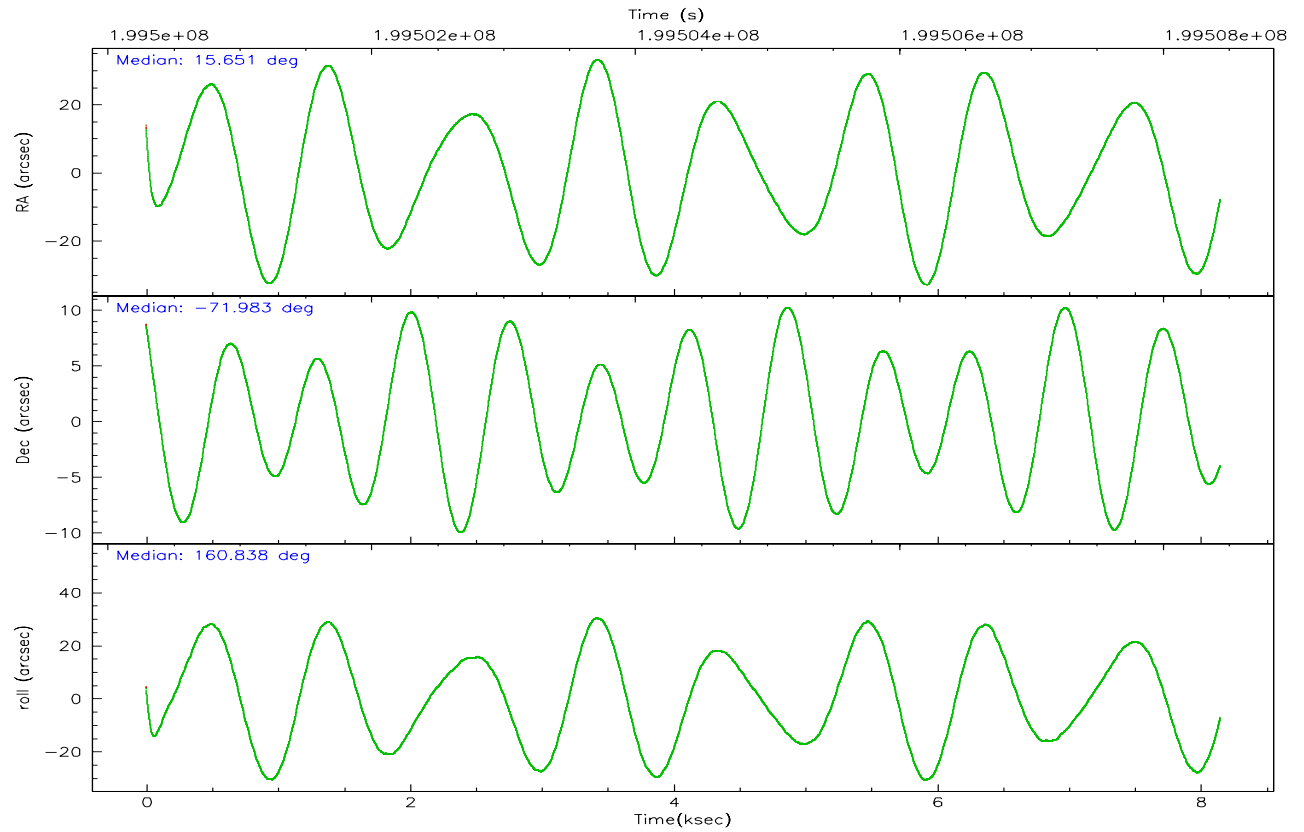
	ccd 0	ccd 1	ccd 2	ccd 3	ccd 6	ccd 7
grade 0 events	1802	1896	1963	21720	2547	1417
	4%	4%	4%	31%	5%	3%
grade 1 events	26	19	28	181	31	20
	0%	0%	0%	0%	0%	0%
grade 2 events	1051	1004	1081	2544	1080	5014
	2%	2%	2%	3%	2%	11%
grade 3 events	565	545	503	910	519	1306
	1%	1%	1%	1%	1%	3%
grade 4 events	504	574	530	986	499	1235
	1%	1%	1%	1%	1%	2%
grade 5 events	1443	1455	1339	1601	1584	3400
	3%	3%	2%	2%	3%	7%
grade 6 events	851	918	789	986	903	10774
	1%	2%	1%	1%	1%	24%
grade 7 events	36887	36265	40827	39781	41674	20036
	85%	84%	86%	57%	85%	46%

## 2.2 Compared Parameters

Parameter	Planned	Actual	Parameter	Planned	Actual
Instrument	ACIS	ACIS	Obspar format version number	6	6
Detector	ACIS-012367	ACIS-012367	Obspar file type	PREDICTED	ACTUAL
Grating	NONE	NONE	Obspar update status	NONE	UPDATED
Data mode	VFAINT	VFAINT	On-chip summing requested	N	N
Observation mode	POINTING	POINTING	Subarray requested	NONE	NONE
Pointing RA	15.737872	15.65093498637818	Alternating exposures requested	N	N
Pointing Dec	-71.977449	-71.98275869968481	Primary exposure time	0.000000	3.2
Pointing Roll	160.722632	160.8486380536017			
Window start time	197164864.184000	197164864.184000			
Window stop time	199670464.184000	199670464.184000			
SIM focus pos (mm)	-0.782348	-0.7809083437167272			
SIM defocus (mm)	0	0.001439871863259334			
SIM translation stage pos (mm)	-233.592463	-233.5874344608287			
SIM translation stage offset (mm)	0	-0.005018542100998502			
Observation start time	199500430.184000	199499264.11965			
Observation start date	2004-04-28T00:46:06	2004-04-28T00:27:44			
Observation end time	199508430.184000	199508563.94506			
Observation end date	2004-04-28T02:59:26	2004-04-28T03:02:43			
Read mode	TIMED	TIMED			

## 2.3 Aspect





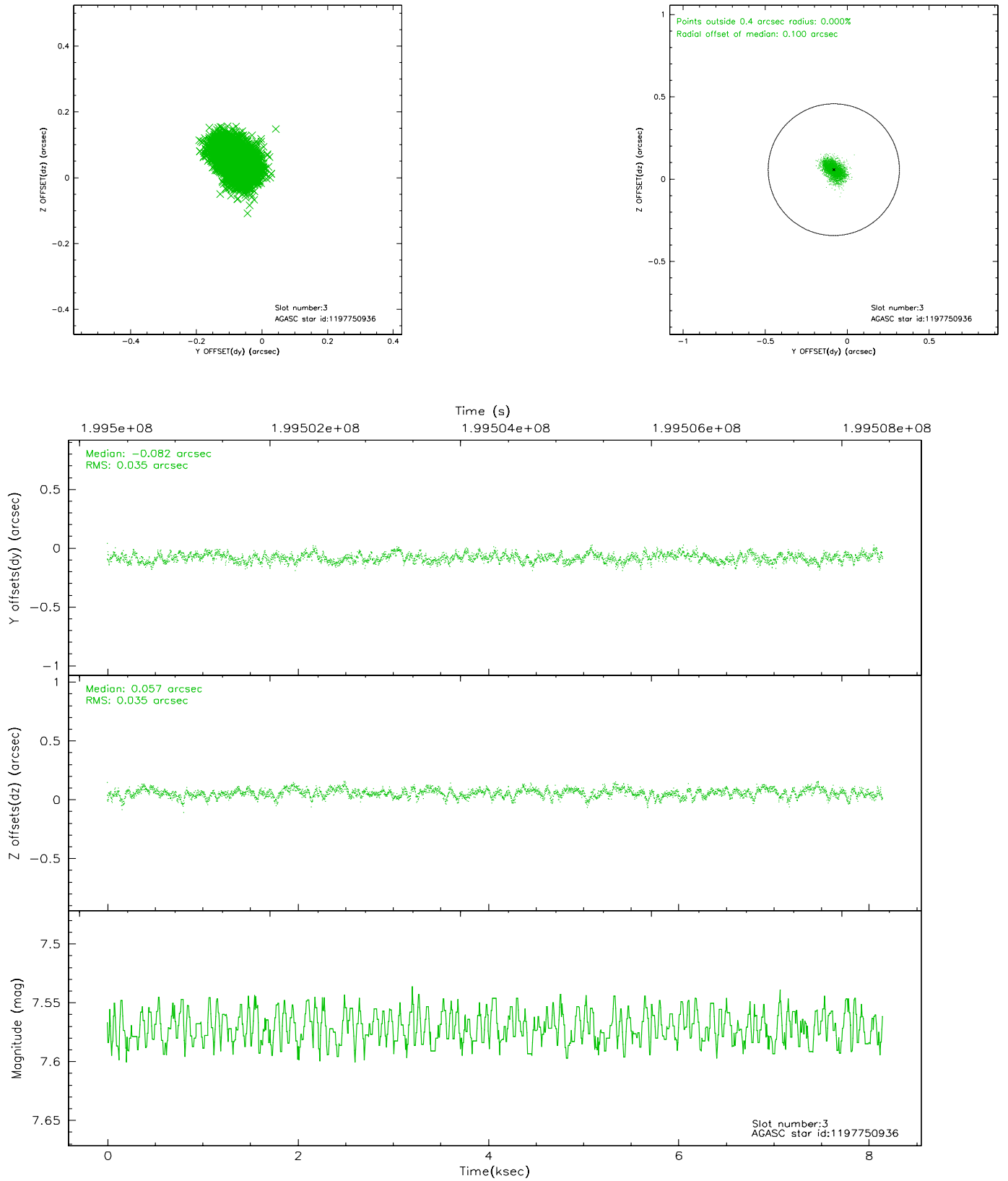
### Slot Statistics

slot	status	id	mag	n_pts	med_dy	med_dz	dr1	dr2	ra	dec	mean_y	mean_z
0	FID	ACIS-I-1	7.23	1988	0.003	0.061	0.006	0.011	0.000000	0.000000	935.23	-832.31
1	FID	ACIS-I-5	7.23	1988	-0.150	0.037	0.006	0.010	0.000000	0.000000	-1812.66	1064.79
2	FID	ACIS-I-6	7.25	1988	0.055	-0.028	0.007	0.012	0.000000	0.000000	400.07	1710.03
3	GUIDE	1197750936	7.57	3976	-0.082	0.057	0.052	0.086	15.387940	-71.549550	884.82	-1320.83
4	GUIDE	1197884536	8.50	3976	0.046	0.012	0.065	0.103	17.160729	-71.835289	-1343.79	-992.89
5	GUIDE	1197884712	8.30	3975	0.062	-0.022	0.056	0.089	16.087398	-72.252690	-689.79	809.49
6	GUIDE	1197885328	7.23	3976	-0.010	0.055	0.065	0.102	16.283090	-71.733943	-292.33	-1027.94
7	GUIDE	1198190968	10.01	3971	-0.017	-0.102	0.132	0.217	15.749622	-72.545972	-687.93	1927.40

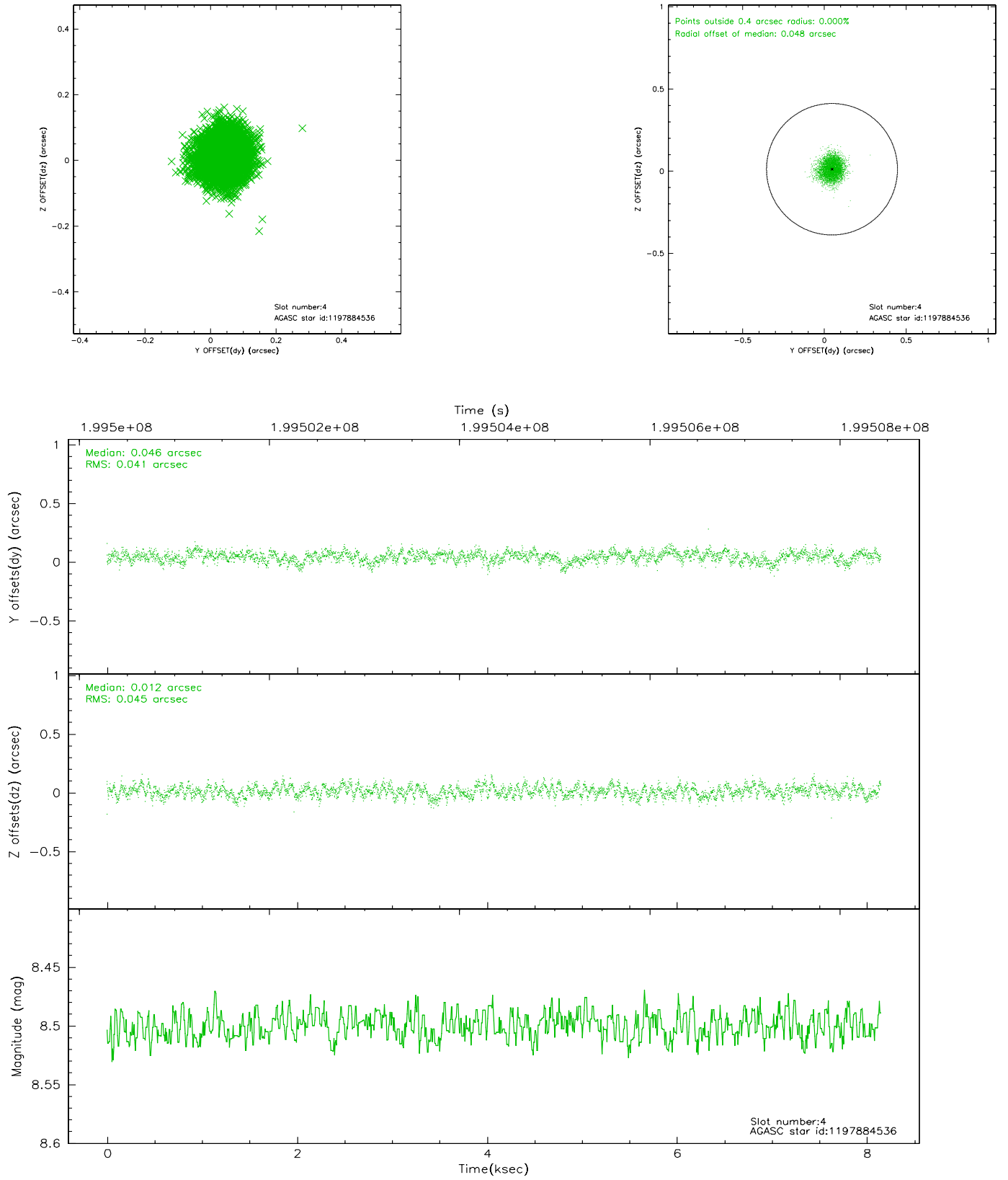


## 2.4 Star Slots

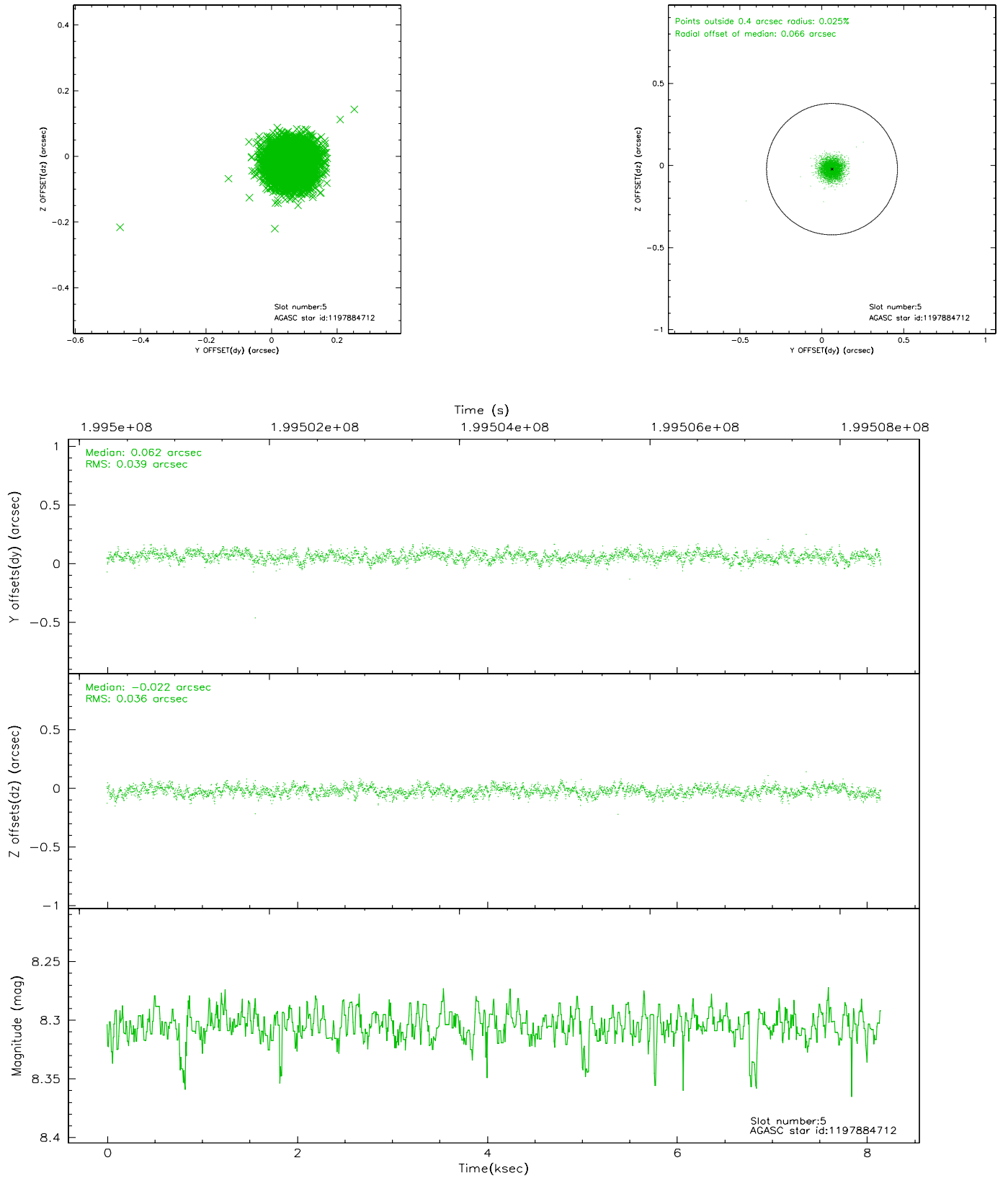
### 2.4.1 Slot 3



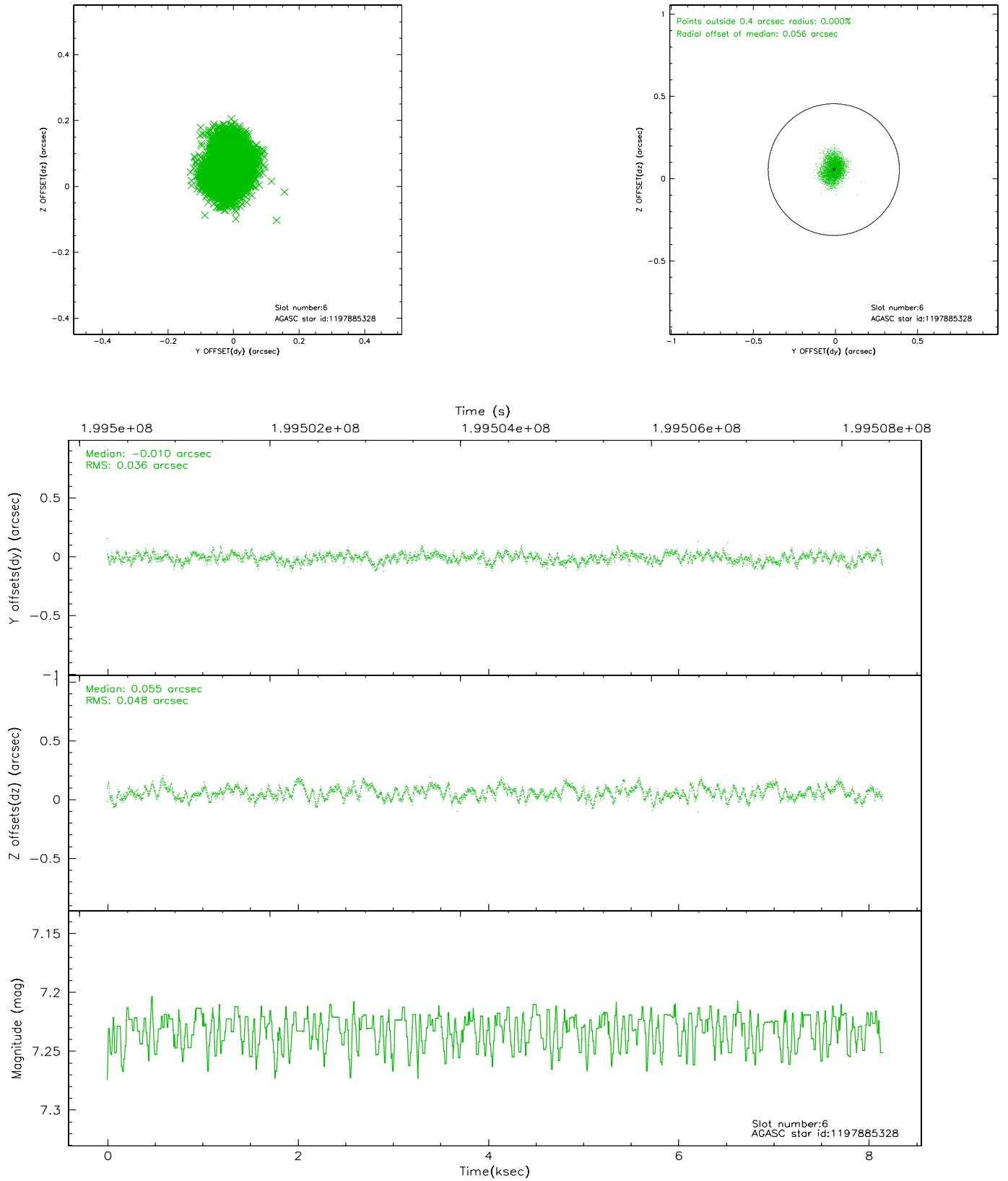
## 2.4.2 Slot 4



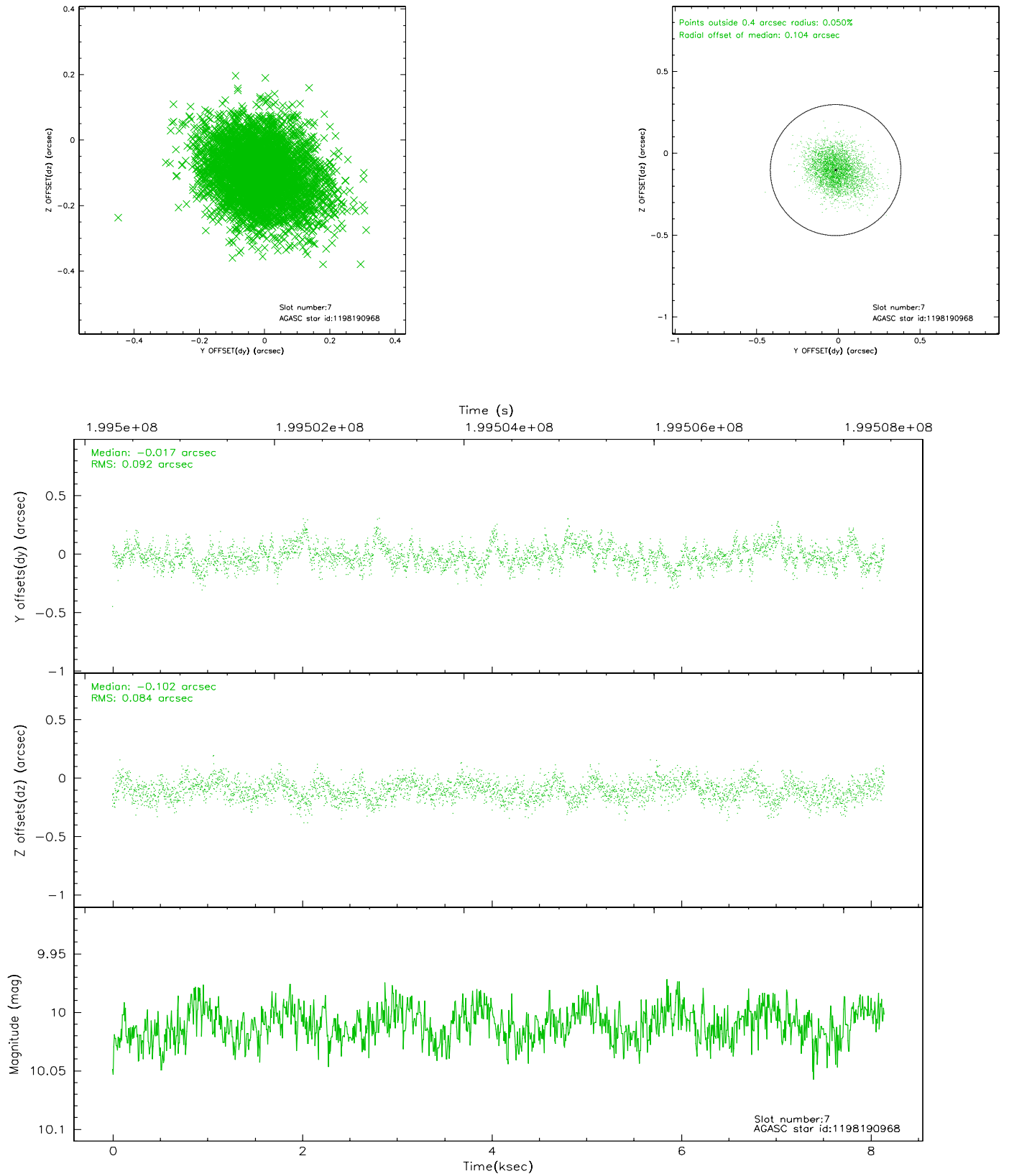
### 2.4.3 Slot 5



## 2.4.4 Slot 6

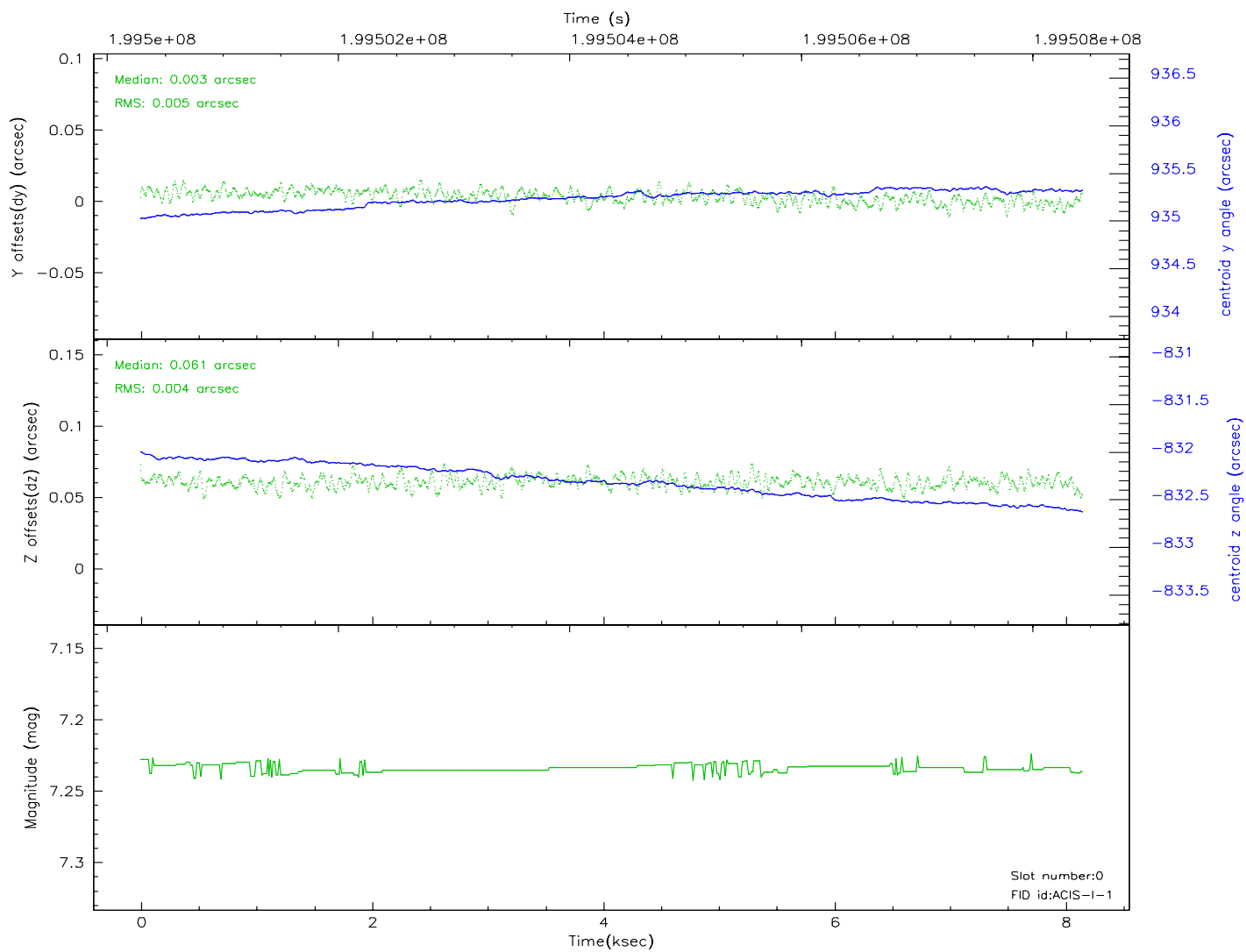
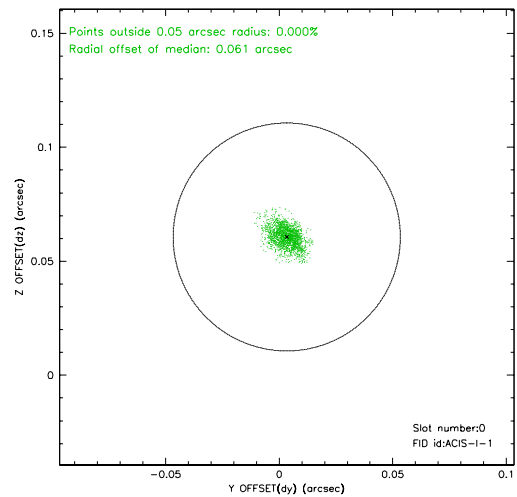
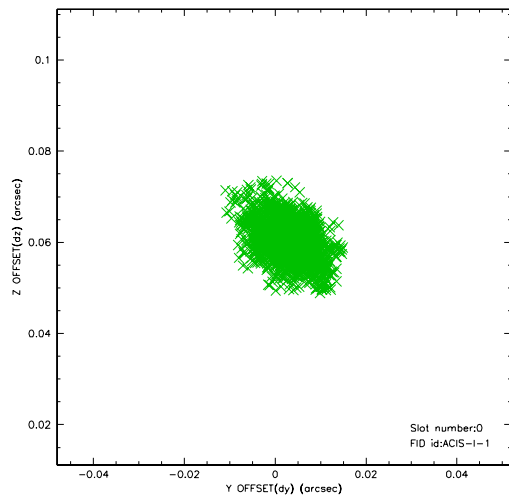


## 2.4.5 Slot 7

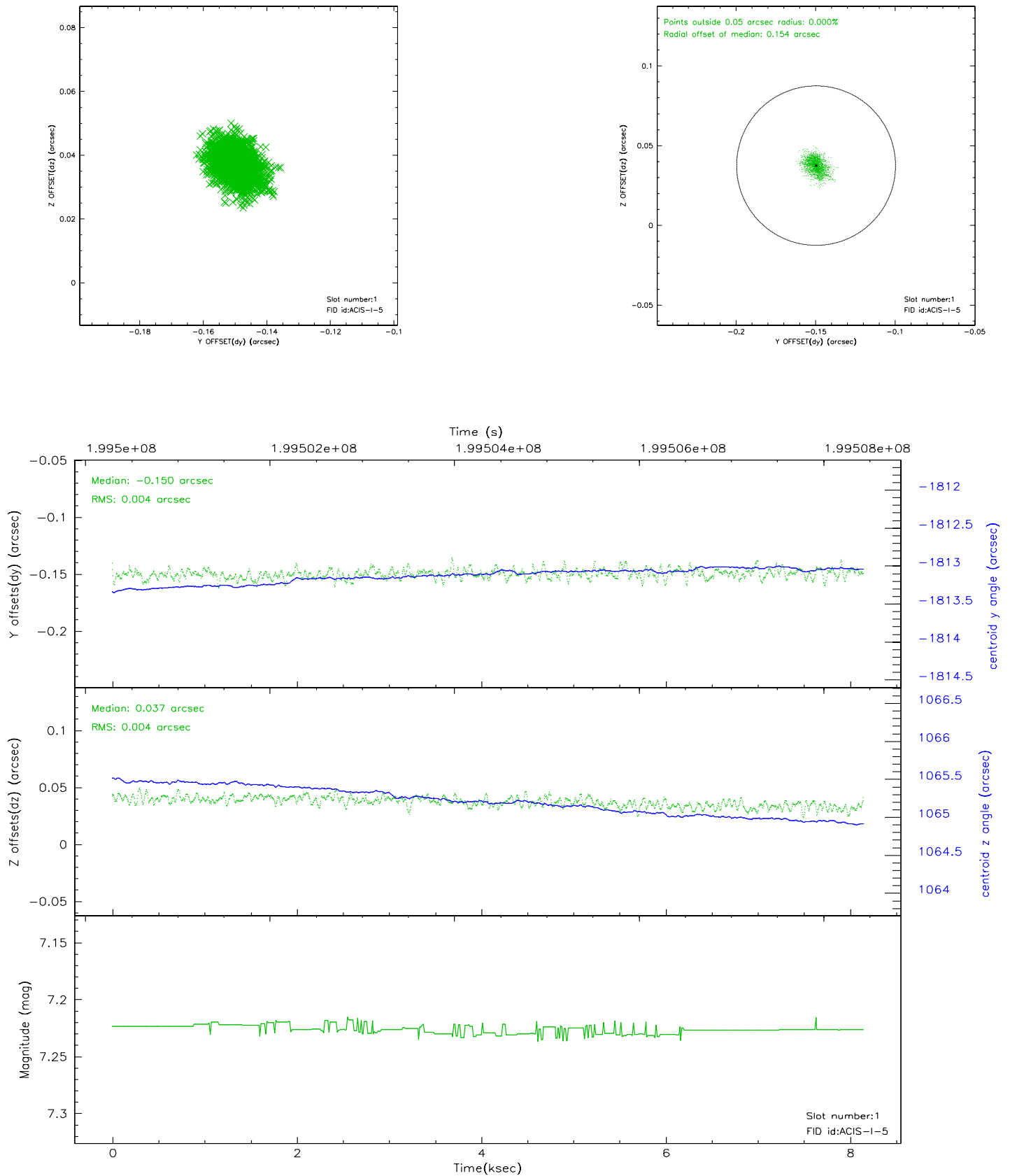


## 2.5 FID Slots

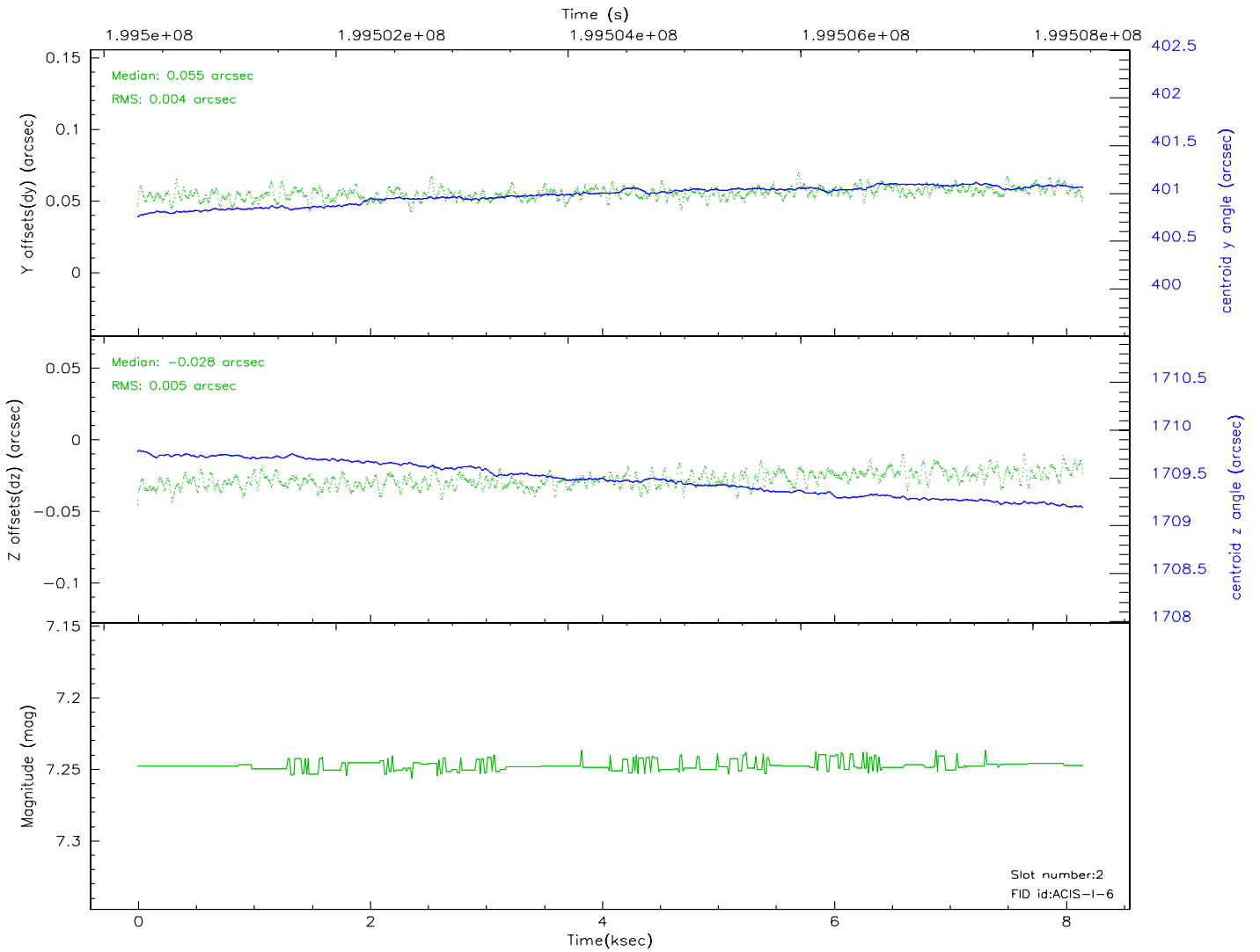
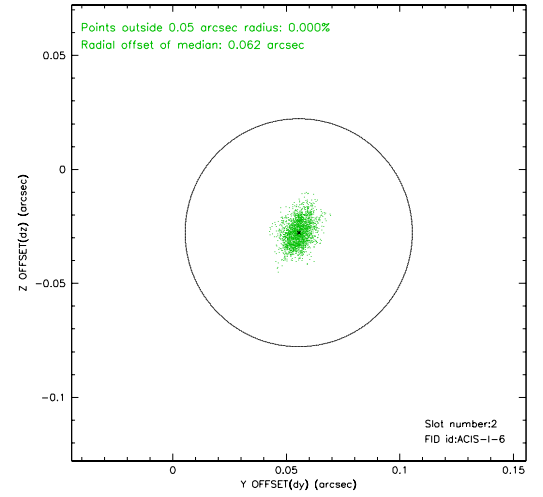
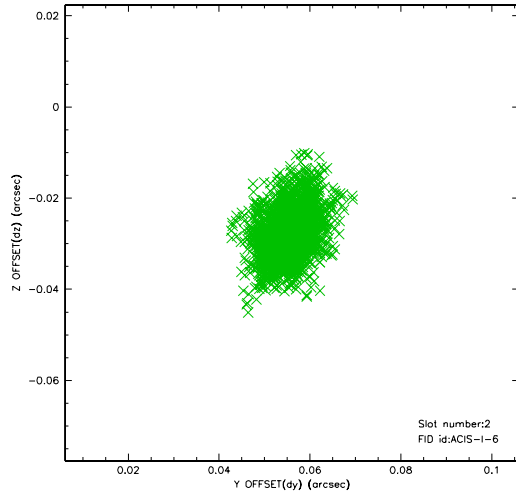
### 2.5.1 Slot 0



## 2.5.2 Slot 1

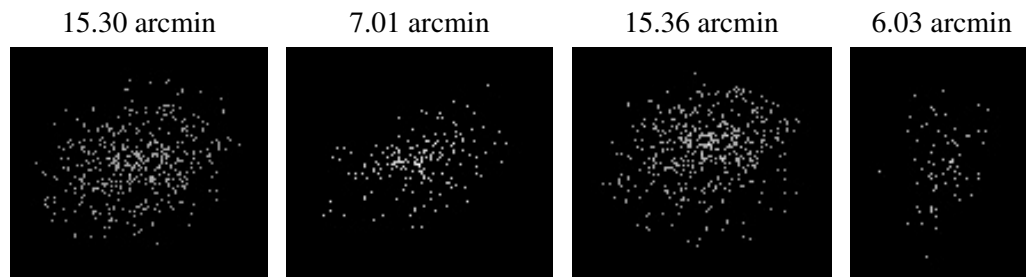


### 2.5.3 Slot 2





### 3 Point Sources



## A Summary

### A.1 Status

V&V Scientist	Beth Sundheim
V&V Date (YYYY-MM-DD)	2006.05.21
V&V Edition	1
V&V Disposition and Status	OK
V&V Charge Time	8.14

### A.2 Comments

Window constraint satisfied.