

# V&V Reference Report

## L2 ASCDS Version : 8.5

Observation 5349 - L2 Version 4  
Chandra X-Ray Center

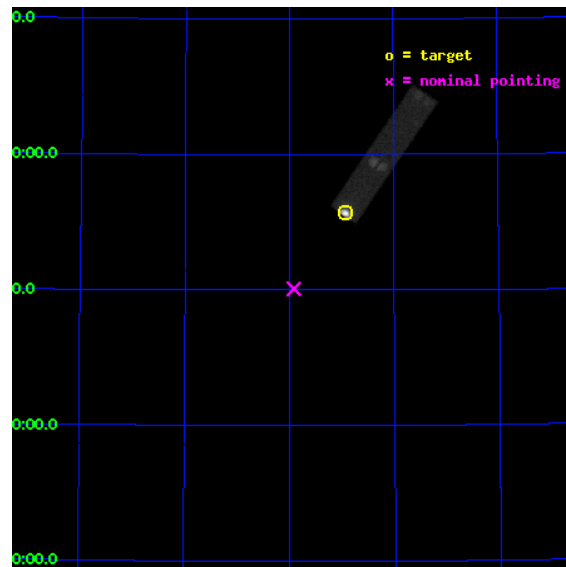
L2 Processing Date : Dec 10 2012

## Contents

<b>1</b>	<b>Front</b>	<b>2</b>
<b>2</b>	<b>OBI</b>	<b>3</b>
2.1	OBI . . . . .	3
2.1.1	Images . . . . .	3
2.1.2	Parameters . . . . .	4
2.1.3	Events . . . . .	4
2.2	Compared Parameters . . . . .	5
2.3	Aspect . . . . .	6
2.4	Star Slots . . . . .	9
2.4.1	Slot 3 . . . . .	9
2.4.2	Slot 4 . . . . .	10
2.4.3	Slot 5 . . . . .	11
2.4.4	Slot 6 . . . . .	12
2.4.5	Slot 7 . . . . .	13
2.5	FID Slots . . . . .	14
2.5.1	Slot 0 . . . . .	14
2.5.2	Slot 1 . . . . .	15
2.5.3	Slot 2 . . . . .	16
<b>A</b>	<b>Summary</b>	<b>17</b>
A.1	Status . . . . .	17
A.2	Comments . . . . .	17

# 1 Front

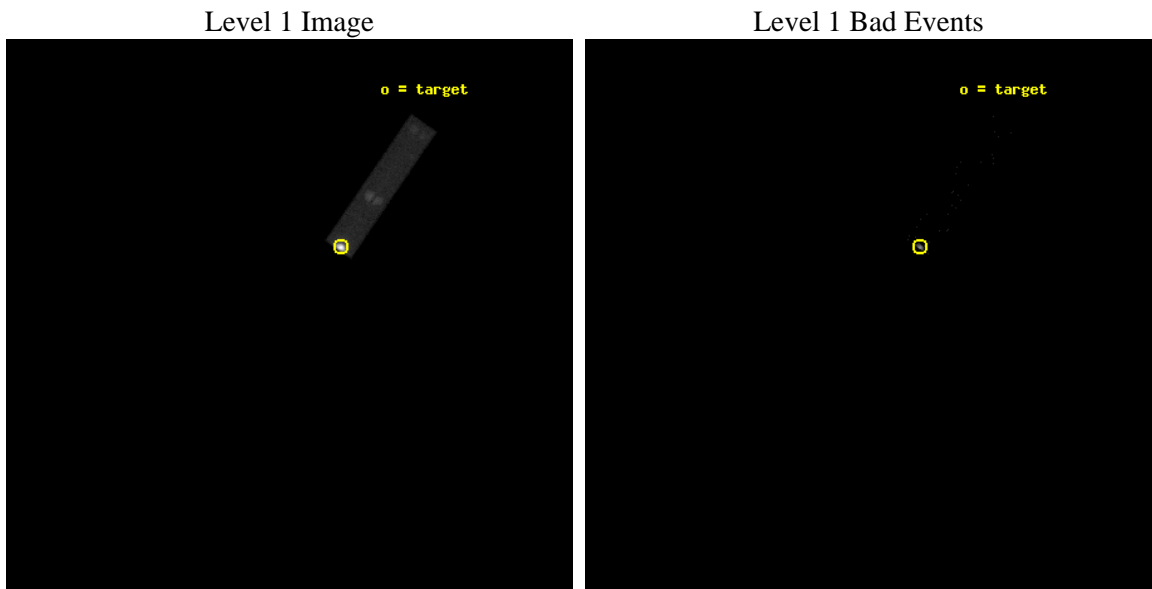
seq_num	290446	Sequence number
obs_id	5349	Observation id
title	Monitoring the health of the HRC UV Ion shield	Proposal title
observer	Dr. CXC Calibration	Principal investigator
object	Vega	Source name
ra_targ	279.235	Observer's specified target RA [deg]
dec_targ	38.783778	Observer's specified target Dec [deg]
ra_nom	279.4793399986	Nominal RA [deg]
dec_nom	38.504629563203	Nominal Dec [deg]
roll_nom	304.36192965092	Nominal Roll [deg]
revision	4	Processing version of data
ontime	3186.9813928902	[s]
livetime	1197.6156717556	Ontime multiplied by DTCOR
l2events	498286	Number of level 2 events



## 2 OBI

### 2.1 OBI

#### 2.1.1 Images



### 2.1.2 Parameters

obi_num	0	Obi number	sched_exp_time	3000.000000	[s] Scheduled observation exposure time
ascdsver	8.5	Processing system revision	ontime	3186.9813928902	[s]
caldsver	4.5.4	&#160	l1events	615867	Number of level 1 events
date	2012-12-11T00:26:55	Date and time of file creation			
revision	4	Processing version of data			

### 2.1.3 Events

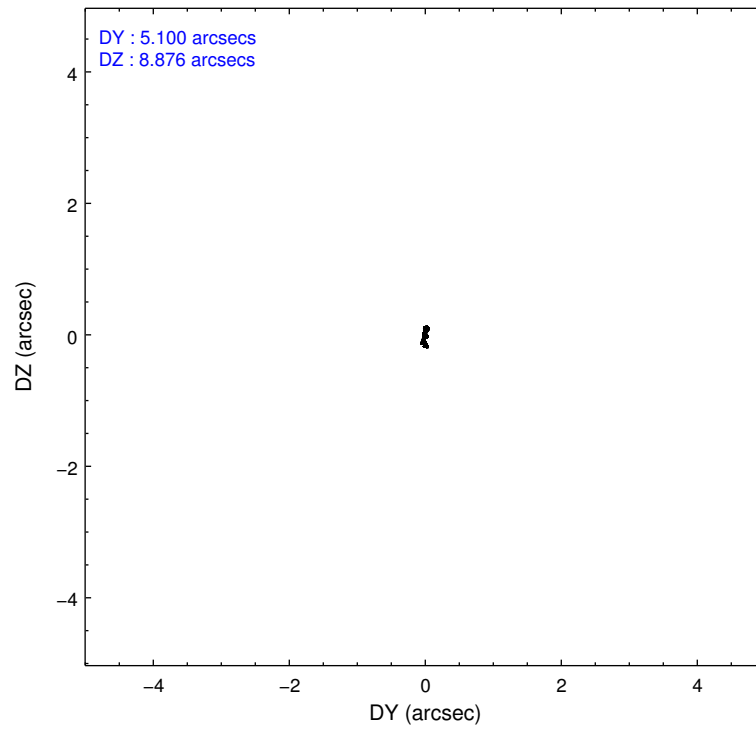
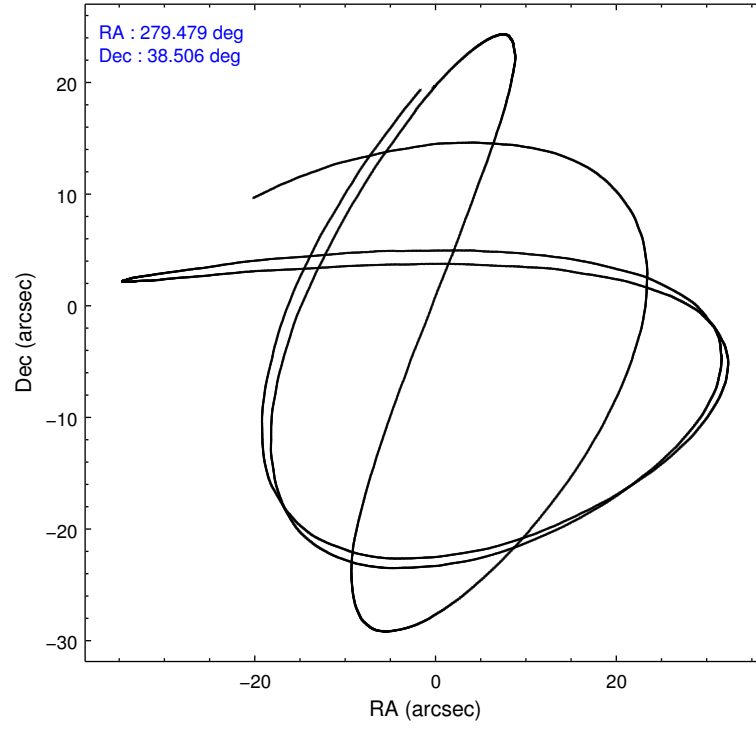
Level 1 Events

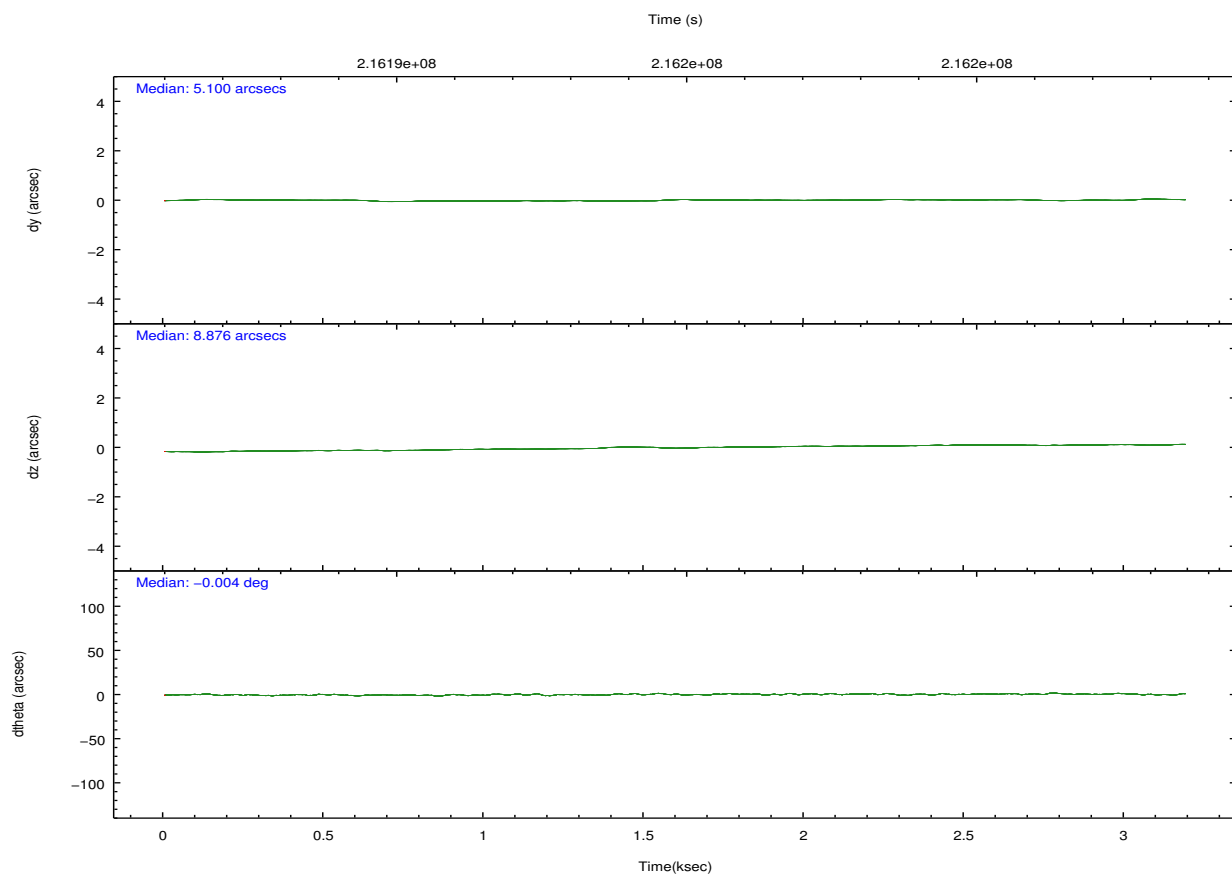
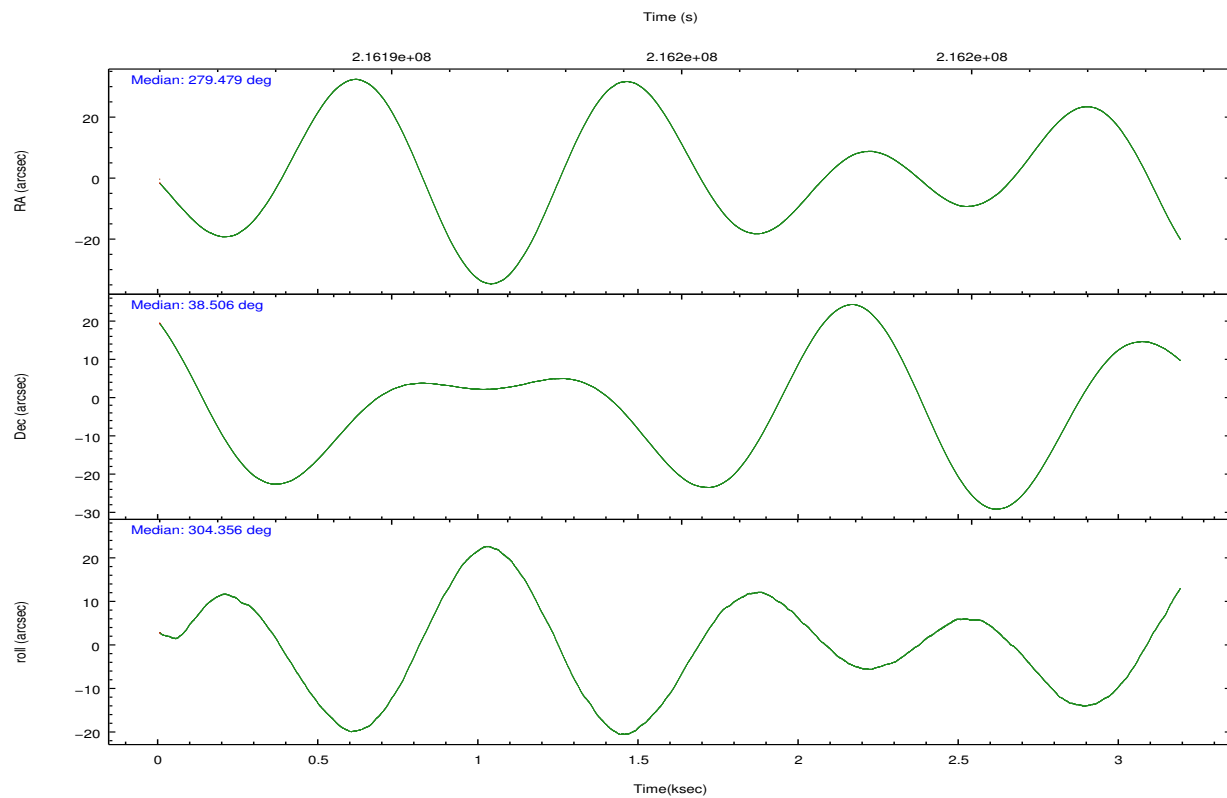
	<b>segment 1</b>	<b>segment 2</b>	<b>segment 3</b>
level 1 events	615810	52	5
rejected events	28199	17	5
rejected %	4%	32%	100%

## 2.2 Compared Parameters

Parameter	Planned	Actual	Parameter	Planned	Actual
Instrument	HRC	HRC	Obspar format version number	7	7
Detector	HRC-S	HRC-S	Obspar file type	PREDICTED	ACTUAL
Grating	NONE	NONE	Obspar update status	NONE	UPDATED
Data mode	OBSERVING	OBSERVING			
Observation mode	POINTING	POINTING			
[deg] Pointing RA	279.445487	279.4793399985987			
[deg] Pointing Dec	38.515789	38.50462956320271			
[deg] Pointing Roll	304.315684	304.361929650917			
[s] Window start time (MET)	215654464.184000	215654464.184000			
[s] Window stop time (MET)	218246404.184000	218246404.184000			
[mm] SIM focus pos	-1.429586	-1.428180813131781			
[mm] SIM defocus	0.1037507710433287	0.1051558262725154			
[mm] SIM translation stage pos	250.455976	250.466033080201			
[mm] SIM translation stage offset	0	-0.01005468664627074			
[s] Observation start time (MET)	216193554.184000	216193178.48677			
Observation start date	2004-11-07T05:44:50	2004-11-07T05:39:38			
[s] Observation end time (MET)	216196554.184000	216197225.69945			
Observation end date	2004-11-07T06:34:50	2004-11-07T06:47:05			

## 2.3 Aspect





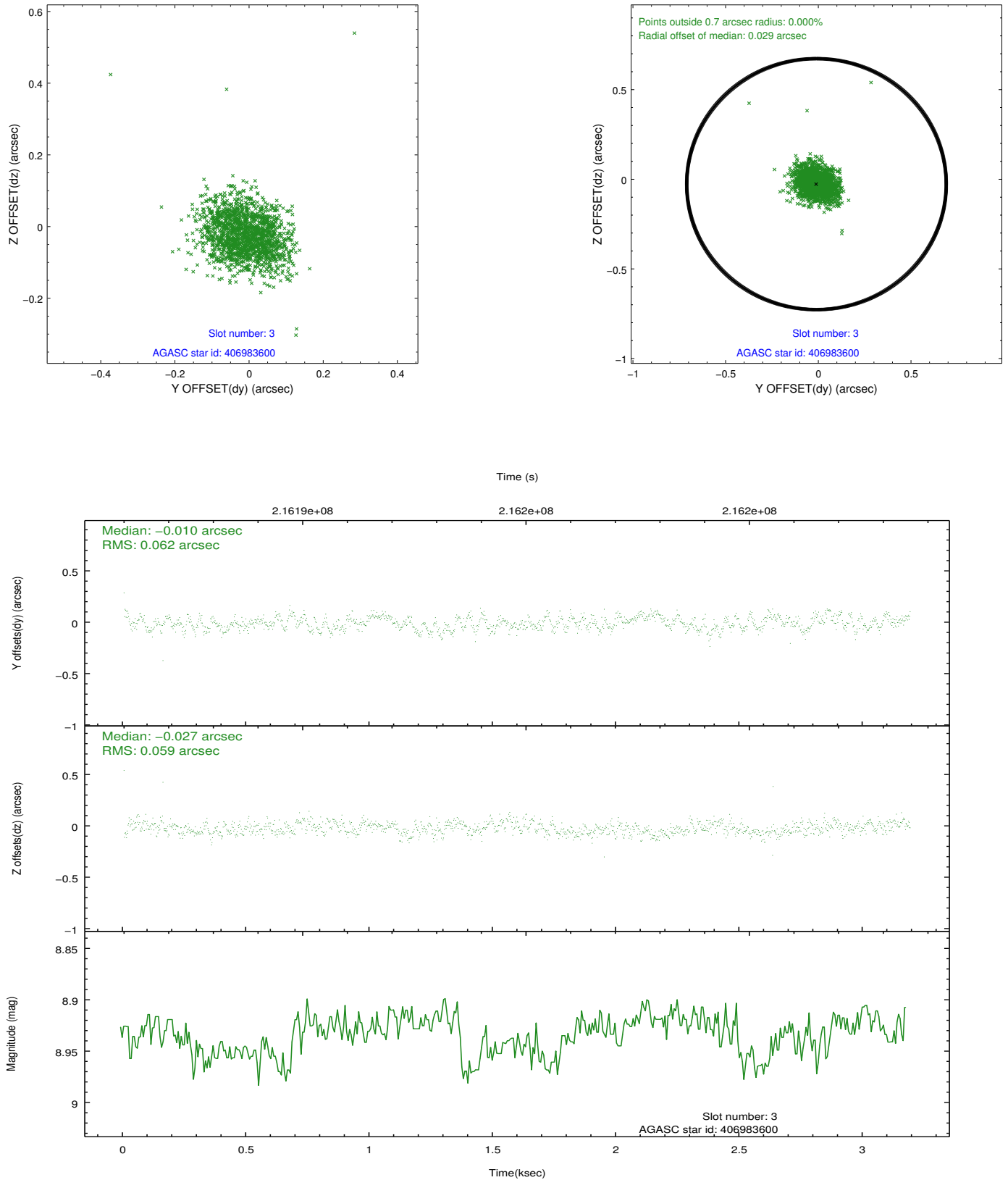
Slot Statistics

slot	status	id	mag	n_pts	med_dy	med_dz	dr1	dr2	ra	dec	mean_y	mean_z
0	FID	HRC-S-1	7.01	778	0.118	-0.175	0.009	0.014	0.000000	0.000000	-1159.20	-457.52
1	FID	HRC-S-2	6.99	778	0.127	-0.094	0.004	0.008	0.000000	0.000000	1239.00	-450.66
2	FID	HRC-S-3	7.01	778	0.145	-0.033	0.008	0.014	0.000000	0.000000	-1160.31	571.57
3	GUIDE	406983600	8.93	1556	-0.010	-0.027	0.088	0.139	279.940957	39.020708	-722.97	2171.54
4	GUIDE	406985120	7.42	1556	-0.084	0.062	0.064	0.101	278.839732	38.894839	-2089.12	-628.13
5	GUIDE	406990192	8.99	1554	0.024	-0.054	0.089	0.152	278.510952	38.533654	-1549.03	-2130.43
6	GUIDE	406992968	7.66	1556	0.018	-0.069	0.064	0.101	279.925490	37.993090	2317.64	64.89
7	GUIDE	406993992	7.63	1555	0.051	0.091	0.062	0.104	279.053714	38.034587	804.44	-1892.41

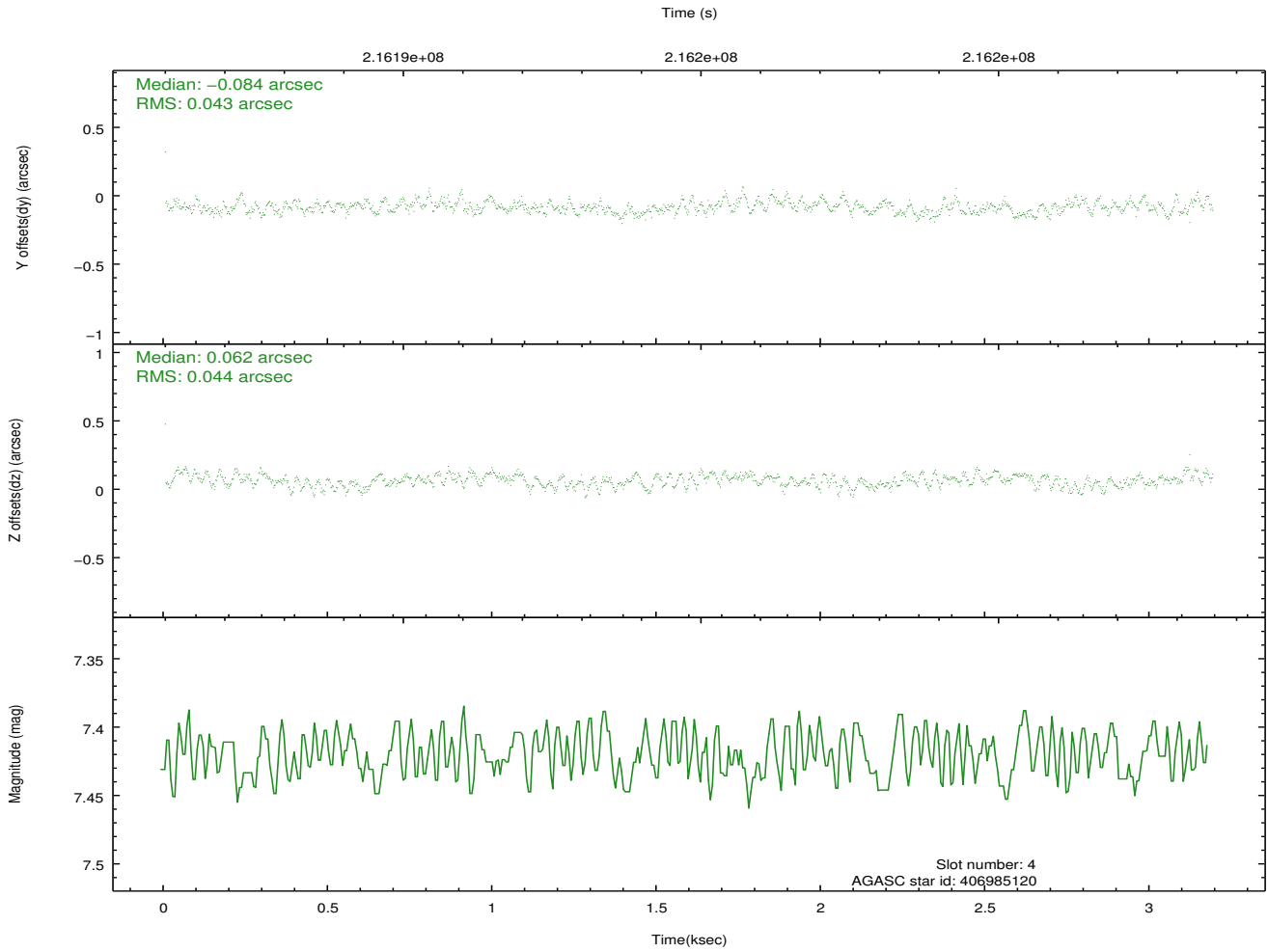
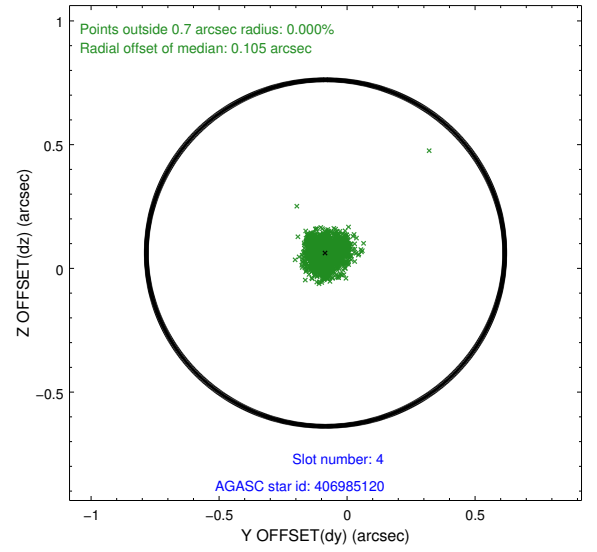
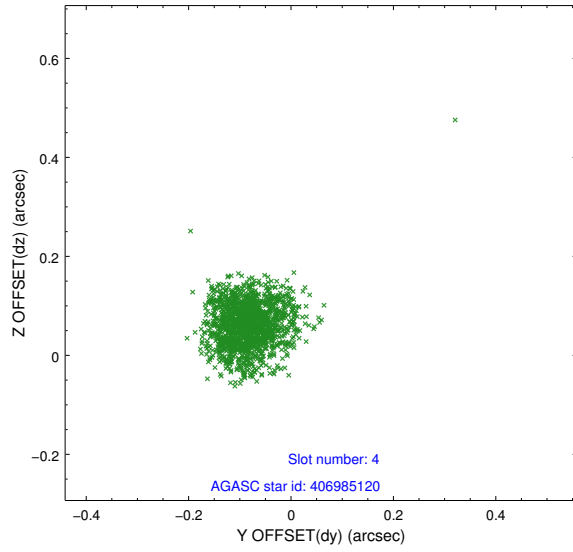


## 2.4 Star Slots

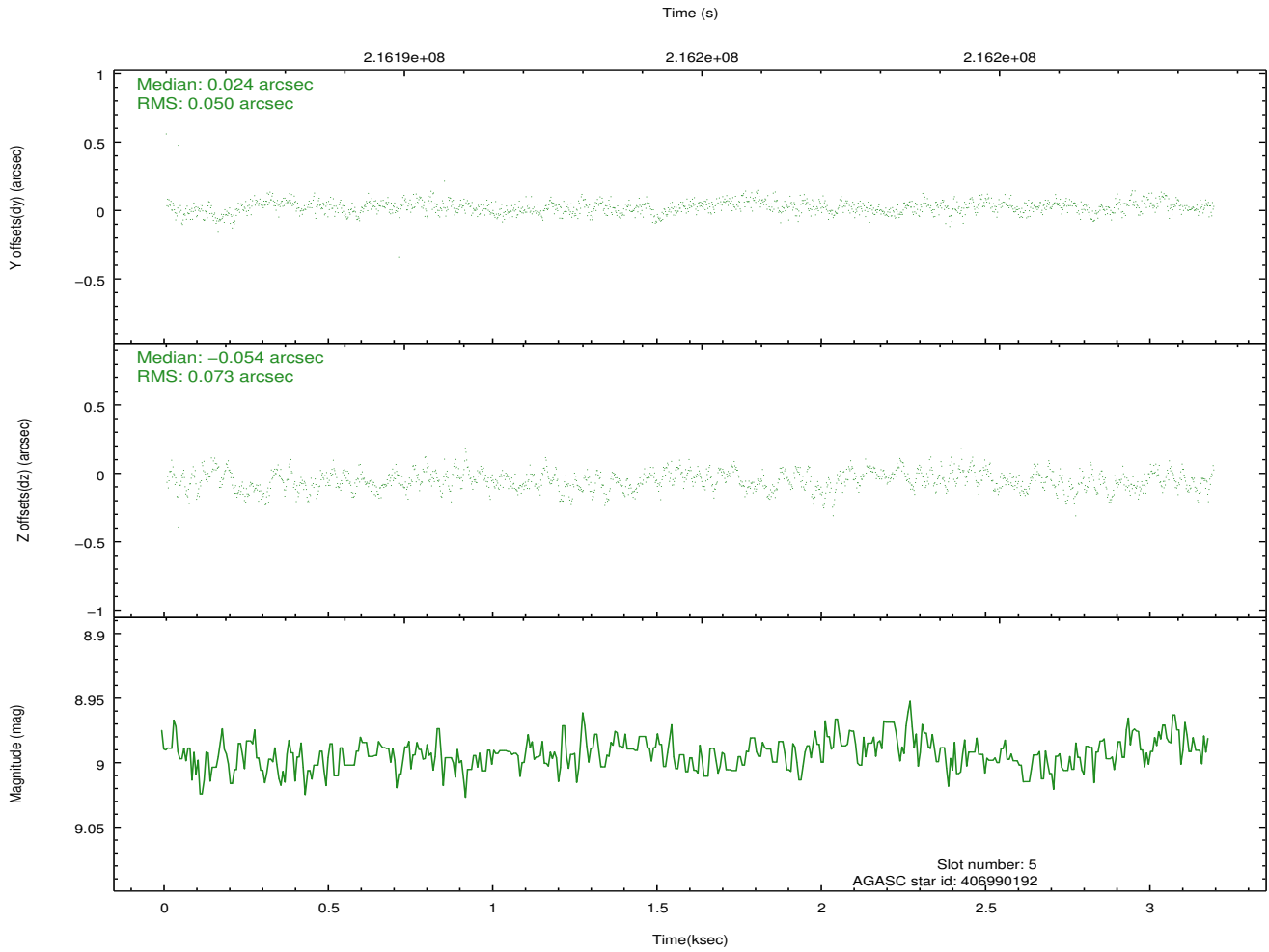
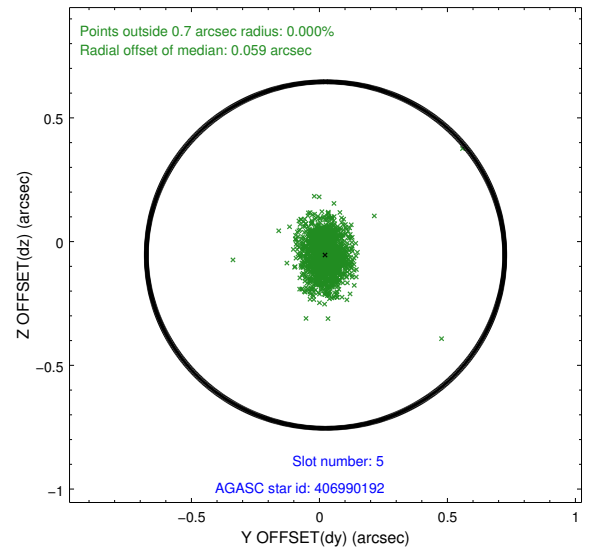
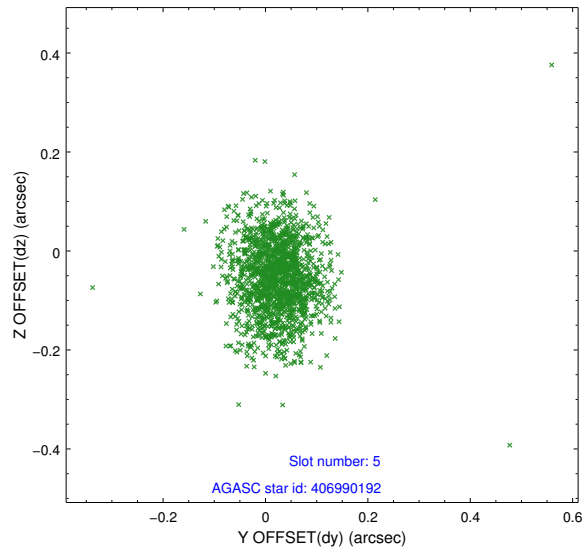
### 2.4.1 Slot 3



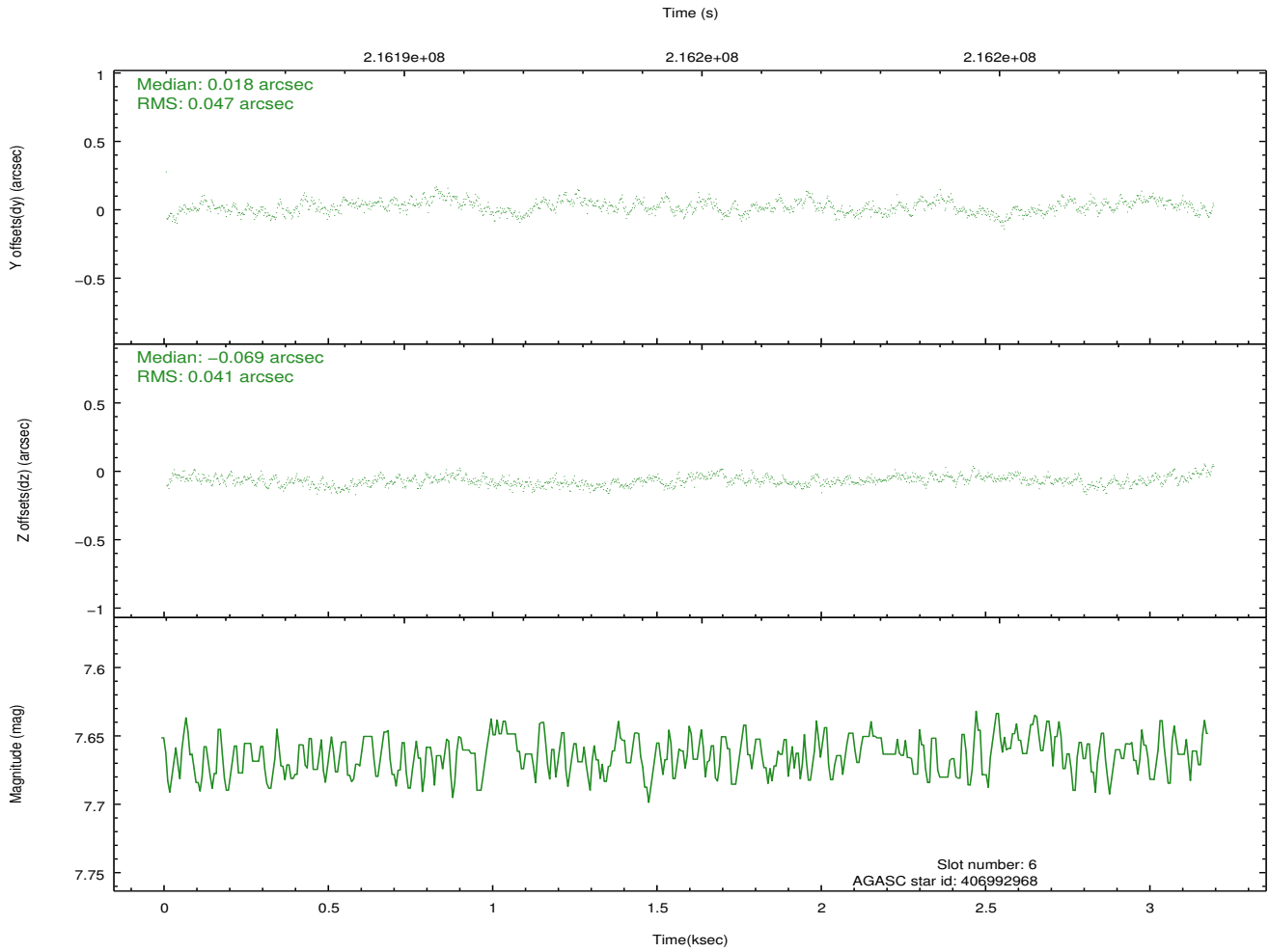
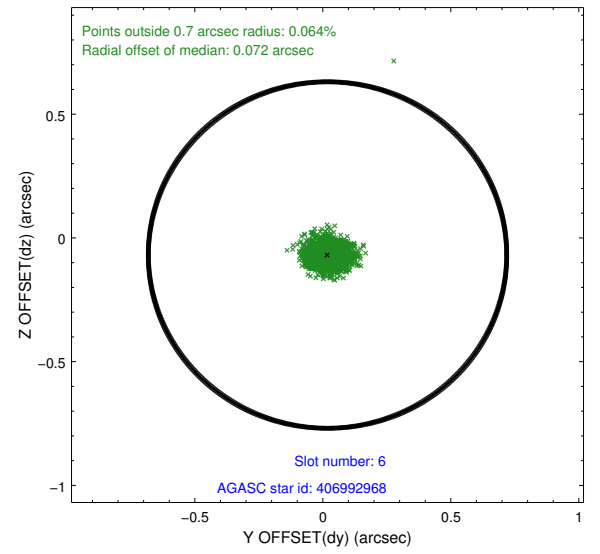
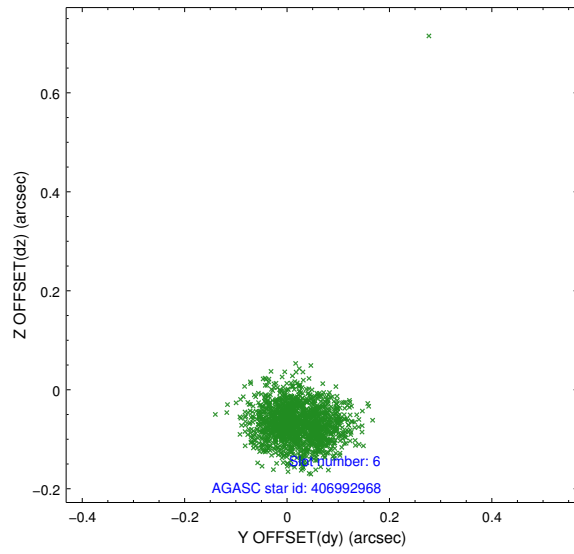
## 2.4.2 Slot 4



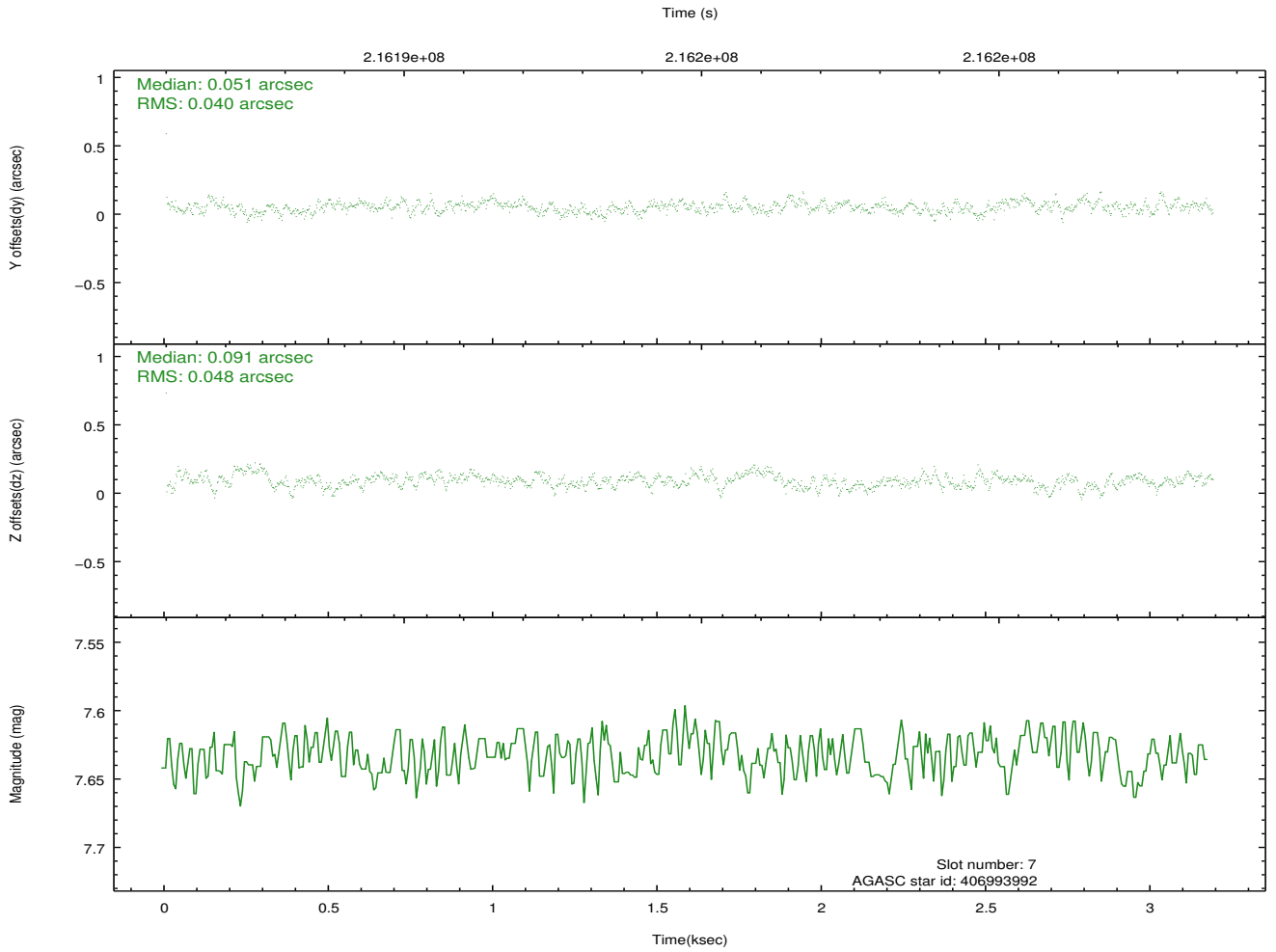
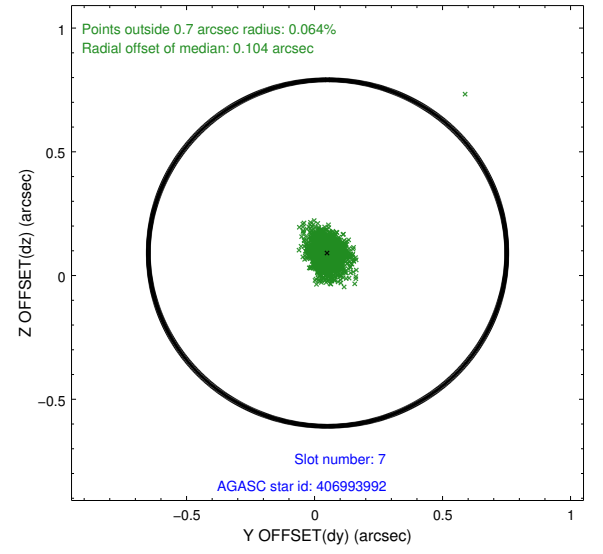
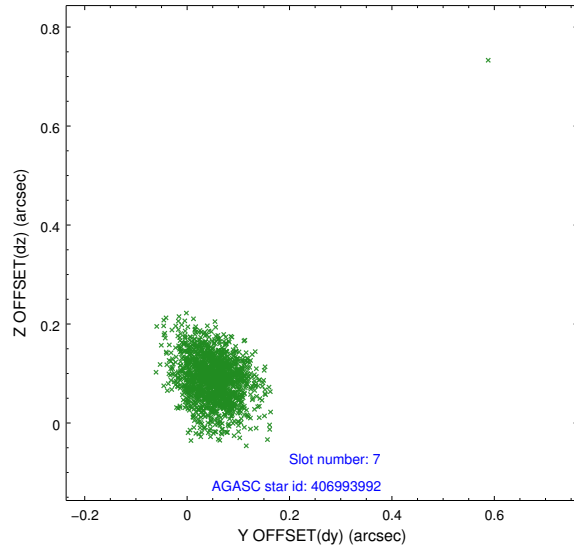
### 2.4.3 Slot 5



## 2.4.4 Slot 6

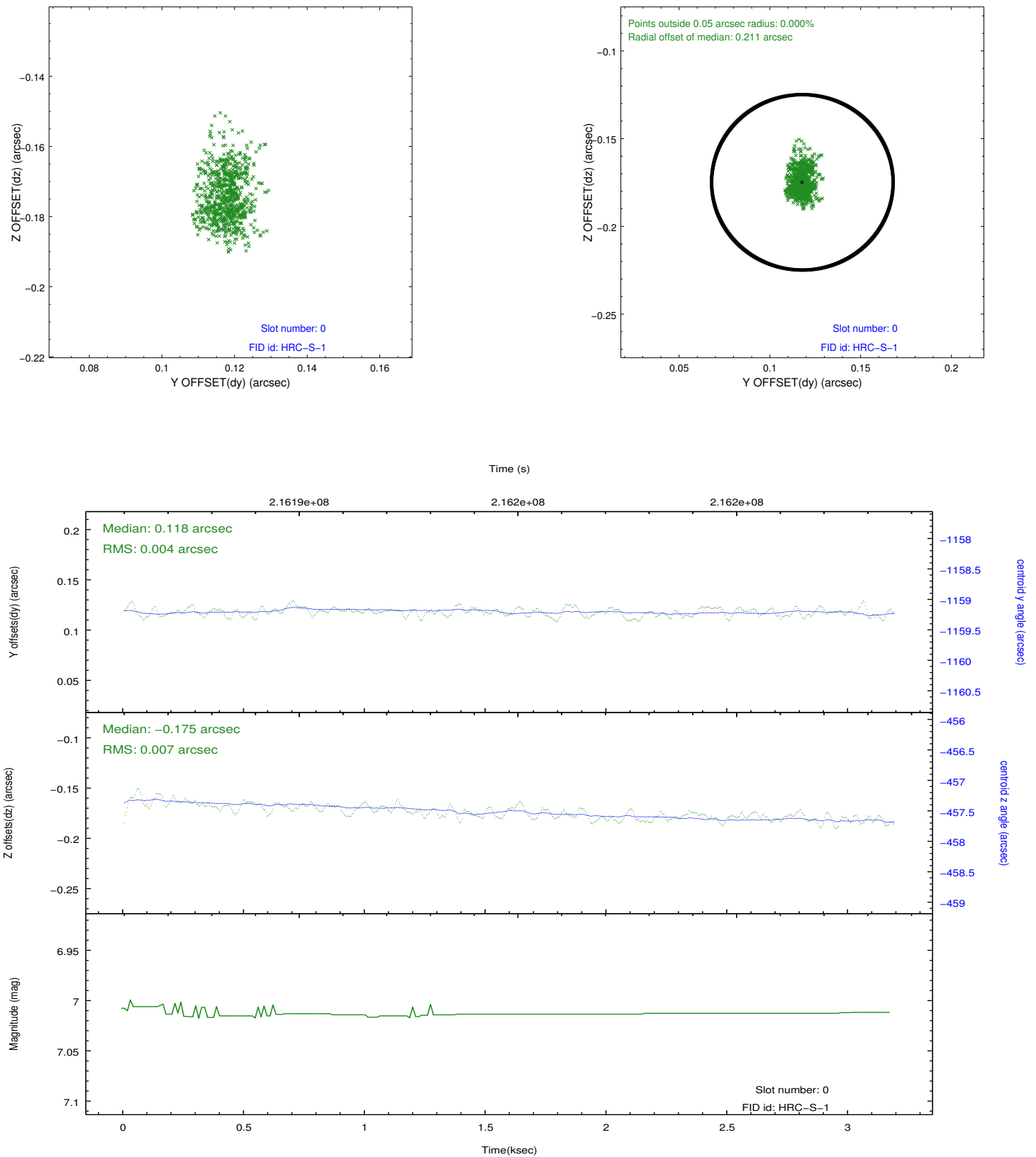


## 2.4.5 Slot 7

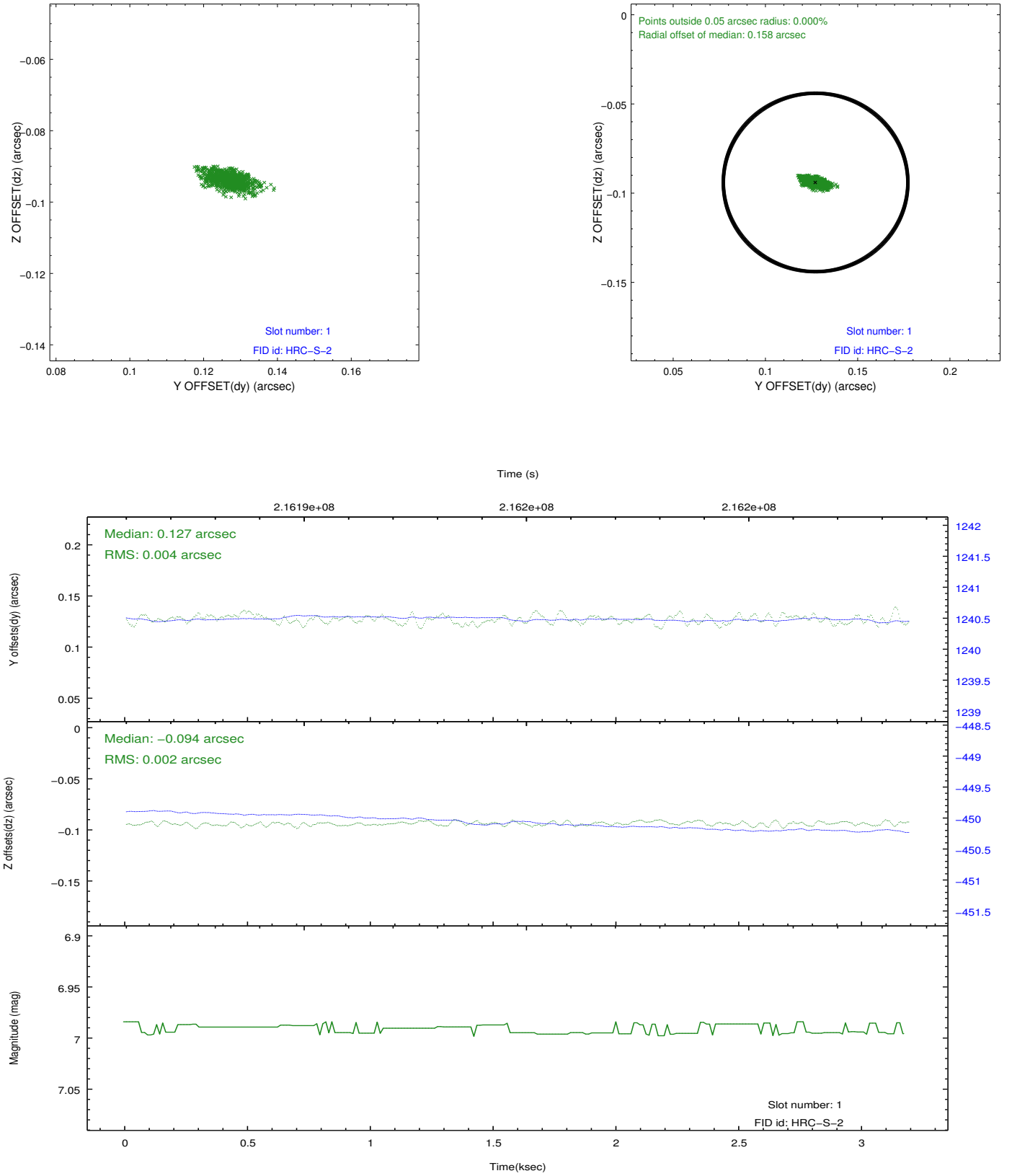


## 2.5 FID Slots

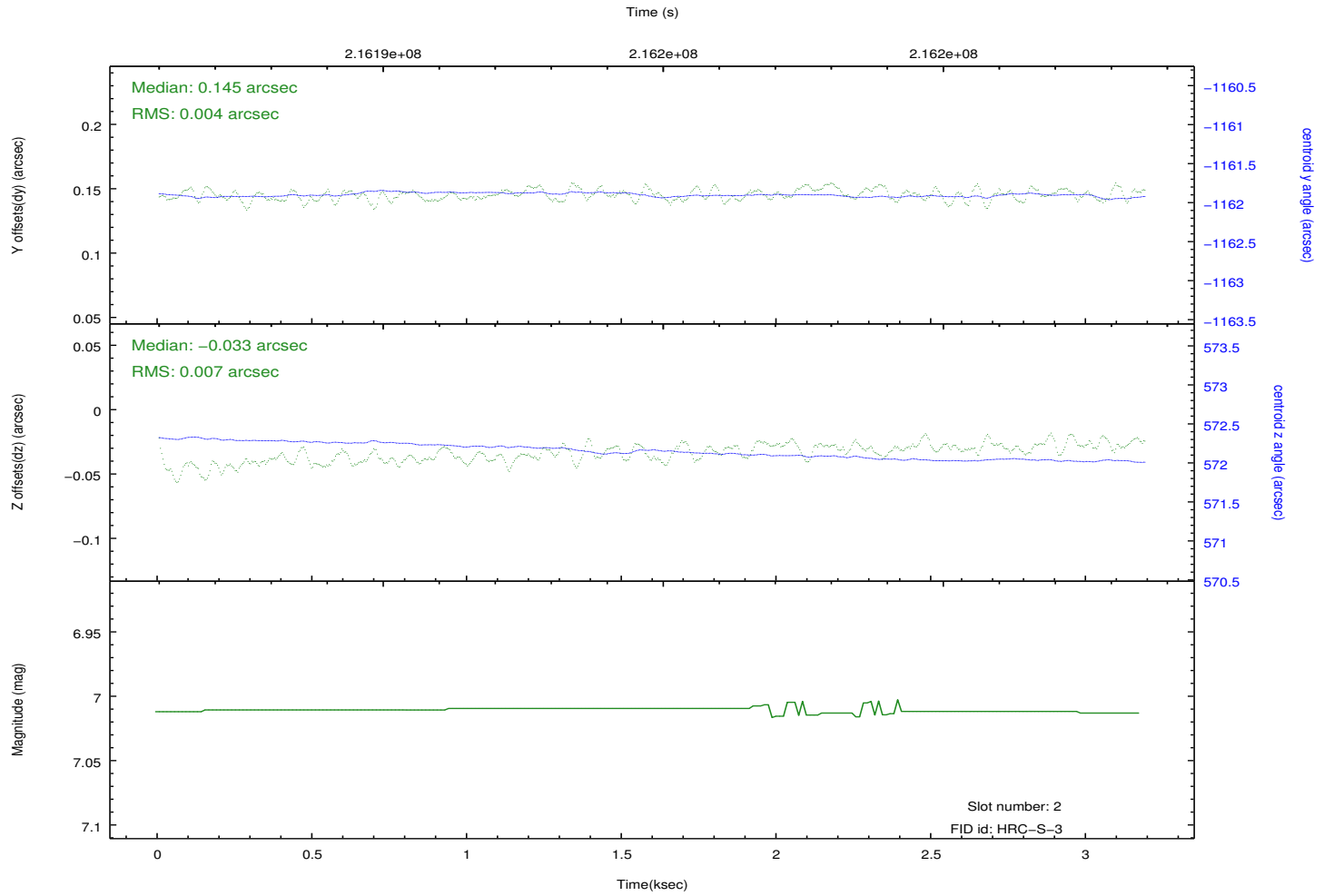
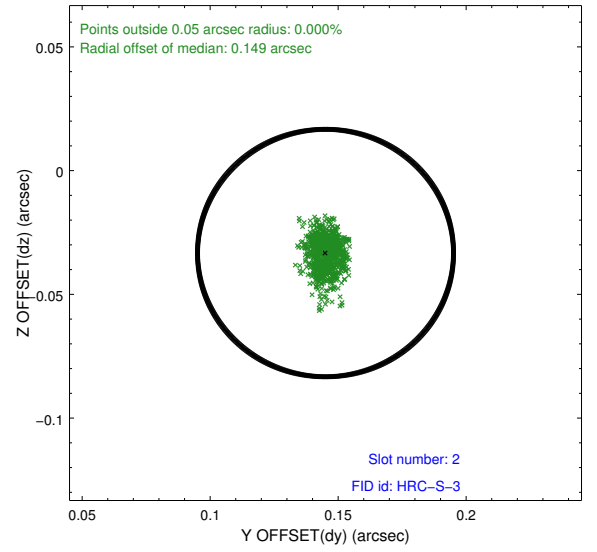
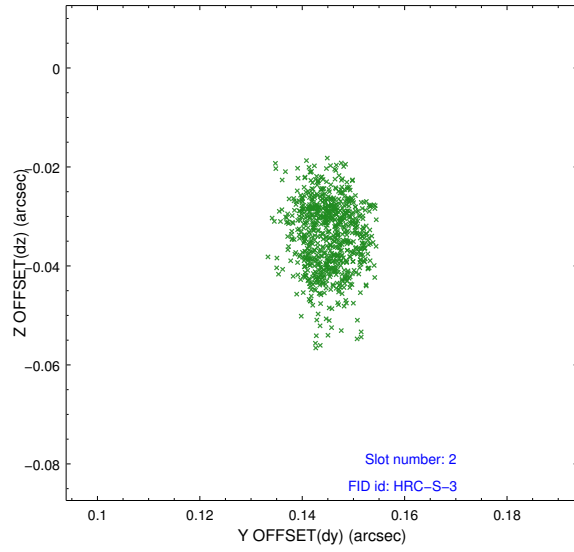
### 2.5.1 Slot 0



## 2.5.2 Slot 1



### 2.5.3 Slot 2





## A Summary

### A.1 Status

V&V Scientist	Jen Lauer
V&V Date (YYYY-MM-DD)	2013.01.03
V&V Edition	1
V&V Disposition and Status	OK
V&V Charge Time	3.186

### A.2 Comments

Window constraint satisfied.