

V&V Reference Report

L2 ASCDS Version : 8.5

Observation 5121 - L2 Version 3
Chandra X-Ray Center

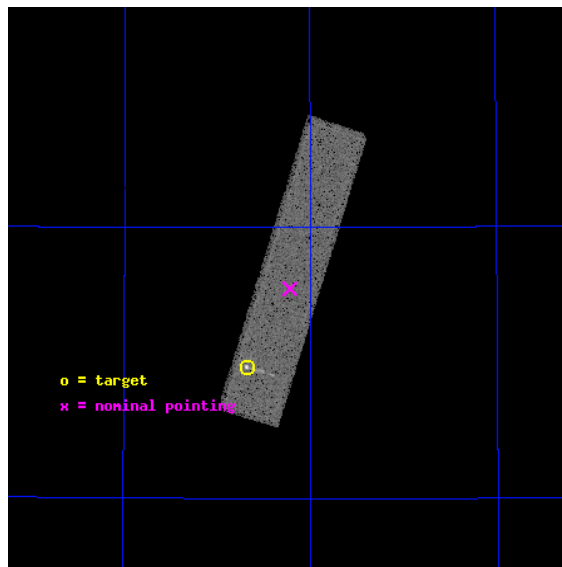
L2 Processing Date : Dec 11 2012

Contents

1	Front	2
2	OBI	3
2.1	OBI	3
2.1.1	Images	3
2.1.2	Parameters	4
2.1.3	Events	4
2.2	Compared Parameters	5
2.3	Aspect	6
2.4	Star Slots	9
2.4.1	Slot 3	9
2.4.2	Slot 4	10
2.4.3	Slot 5	11
2.4.4	Slot 6	12
2.4.5	Slot 7	13
2.5	FID Slots	14
2.5.1	Slot 0	14
2.5.2	Slot 1	15
2.5.3	Slot 2	16
A	Summary	17
A.1	Status	17
A.2	Comments	17

1 Front

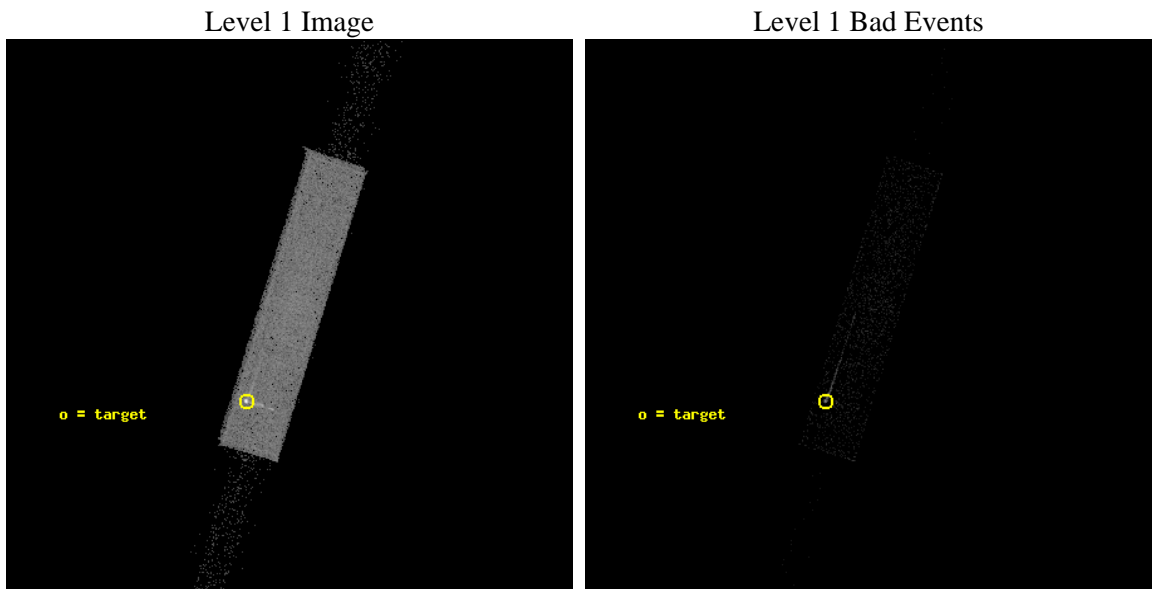
seq_num	290394	Sequence number
obs_id	5121	Observation id
title	AO5B Calibration Observations to Monitor the Spatial Variations in the HRC-S Gain	Proposal title
observer	Dr. CXC Calibration	Principal investigator
object	ArLac	Source name
ra_targ	332.17	Observer's specified target RA [deg]
dec_targ	45.742306	Observer's specified target Dec [deg]
ra_nom	332.05437303857	Nominal RA [deg]
dec_nom	45.887035248085	Nominal Dec [deg]
roll_nom	287.16210208158	Nominal Roll [deg]
revision	3	Processing version of data
ontime	1052.6750473082	[s]
livetime	1045.8975589638	Ontime multiplied by DTCOR
l2events	45616	Number of level 2 events



2 OBI

2.1 OBI

2.1.1 Images



2.1.2 Parameters

obi_num	1	Obi number	sched_exp_time	900.000000	[s] Scheduled observation exposure time
ascdsver	8.5	Processing system revision	ontime	1052.6750473082	[s]
caldbver	4.5.4	 	l1events	77335	Number of level 1 events
date	2012-12-12T00:12:25	Date and time of file creation			
revision	3	Processing version of data			

2.1.3 Events

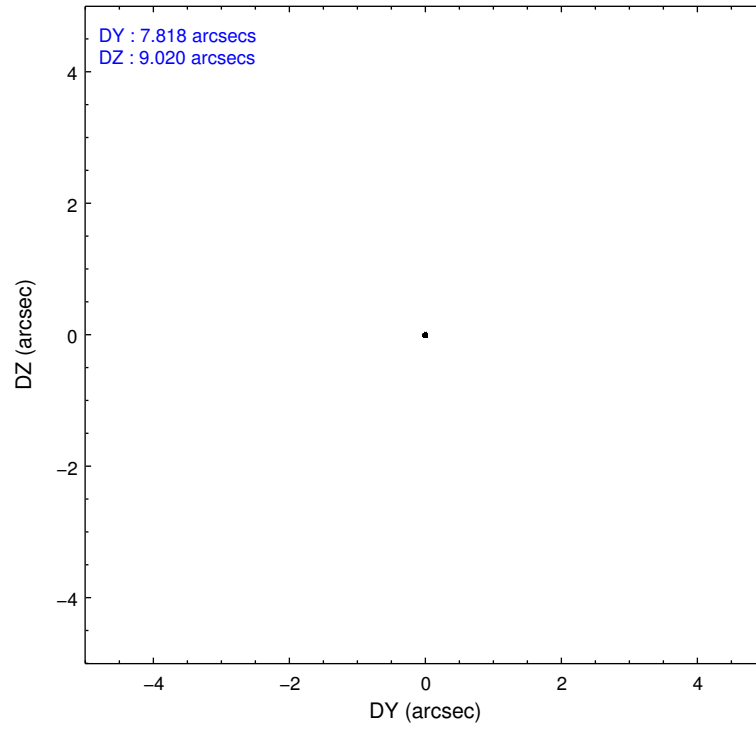
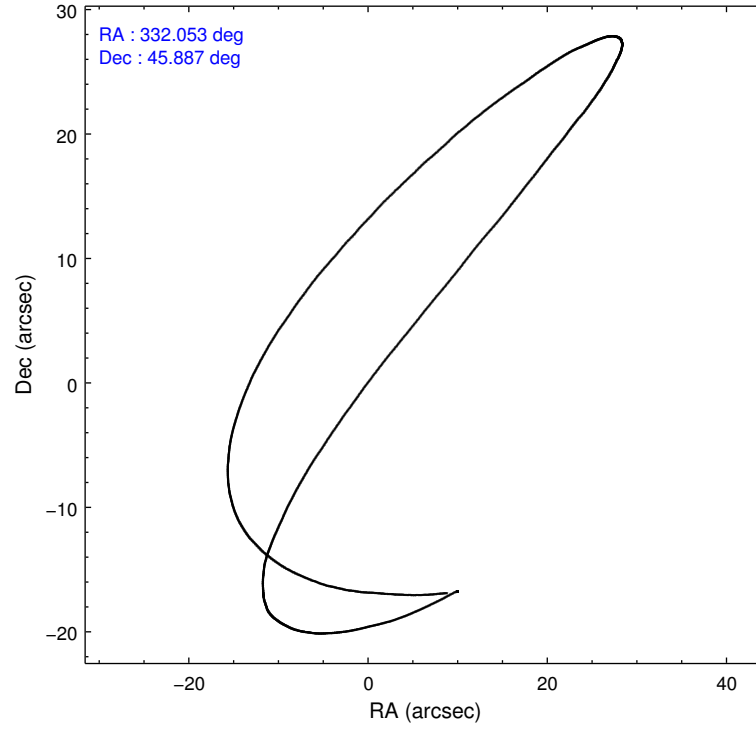
Level 1 Events

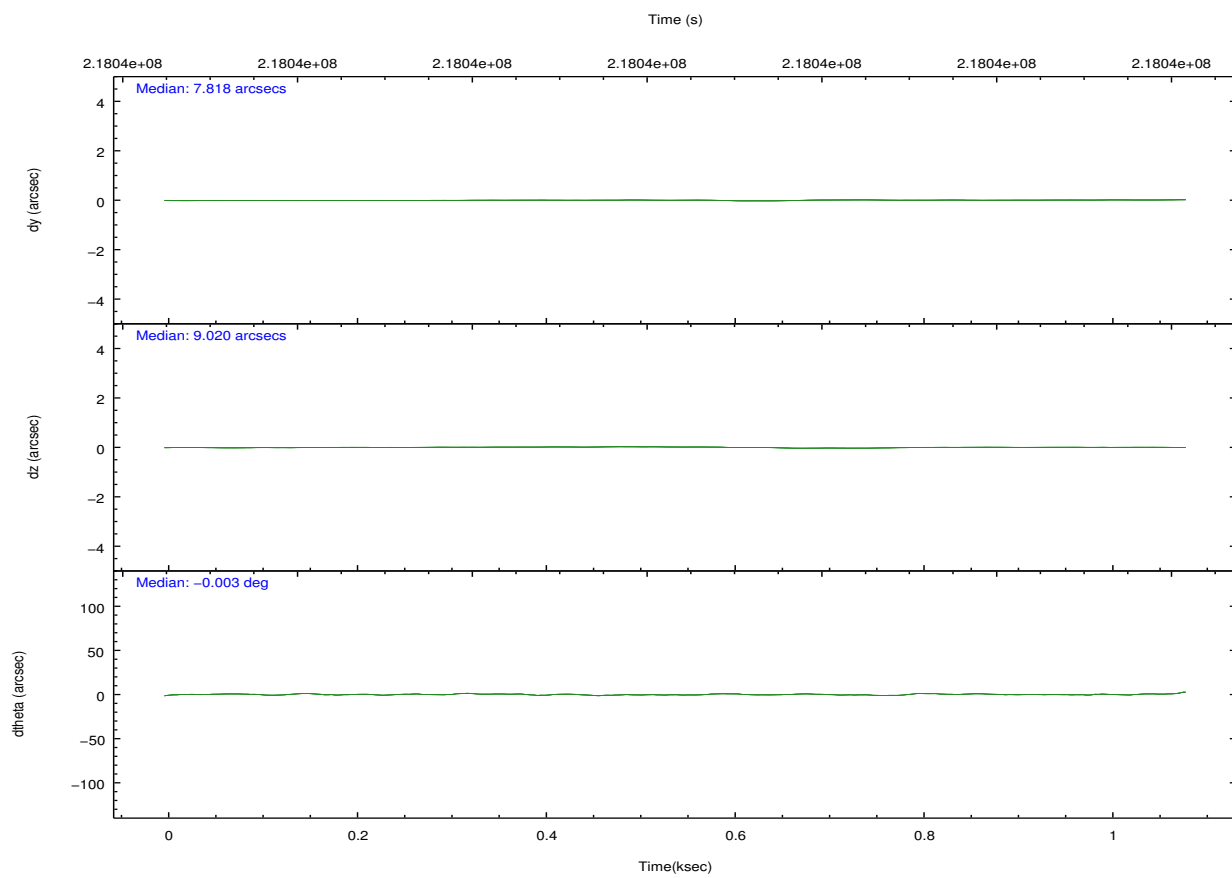
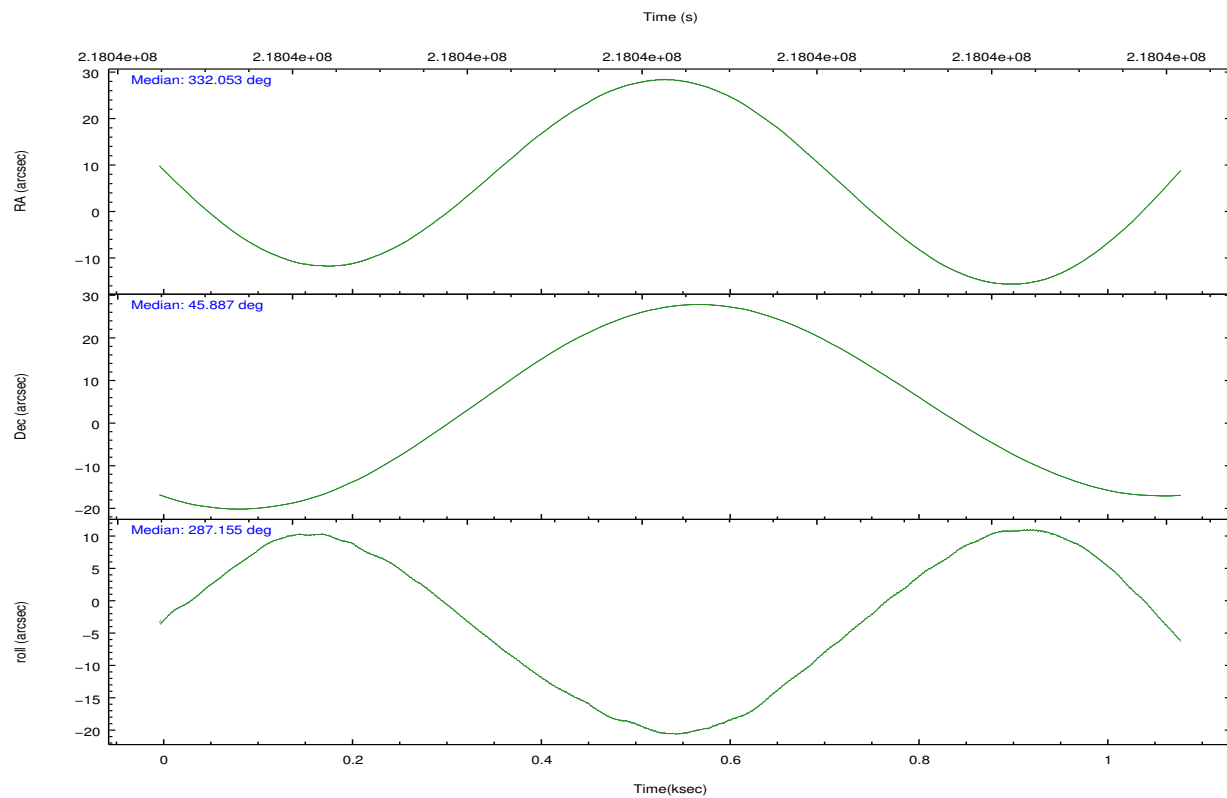
	segment 1	segment 2	segment 3
level 1 events	809	75758	768
rejected events	809	19134	768
rejected %	100%	25%	100%

2.2 Compared Parameters

Parameter	Planned	Actual	Parameter	Planned	Actual
Instrument	HRC	HRC	Obspar format version number	7	7
Detector	HRC-S	HRC-S	Obspar file type	PREDICTED	ACTUAL
Grating	NONE	NONE	Obspar update status	NONE	UPDATED
Data mode	OBSERVING	OBSERVING			
Observation mode	POINTING	POINTING			
[deg] Pointing RA	332.024454	332.0543730385697			
[deg] Pointing Dec	45.905735	45.88703524808523			
[deg] Pointing Roll	287.116244	287.1621020815766			
[mm] SIM focus pos	-1.429586	-1.428180813131781			
[mm] SIM defocus	0.1037507710433287	0.1051558262725154			
[mm] SIM translation stage pos	250.455976	250.466033080201			
[mm] SIM translation stage offset	0	-0.01005468664627074			
[s] Observation start time (MET)	218035473.184000	218035096.90693			
Observation start date	2004-11-28T13:23:29	2004-11-28T13:18:16			
[s] Observation end time (MET)	218036373.184000	218036506.7945			
Observation end date	2004-11-28T13:38:29	2004-11-28T13:41:46			

2.3 Aspect



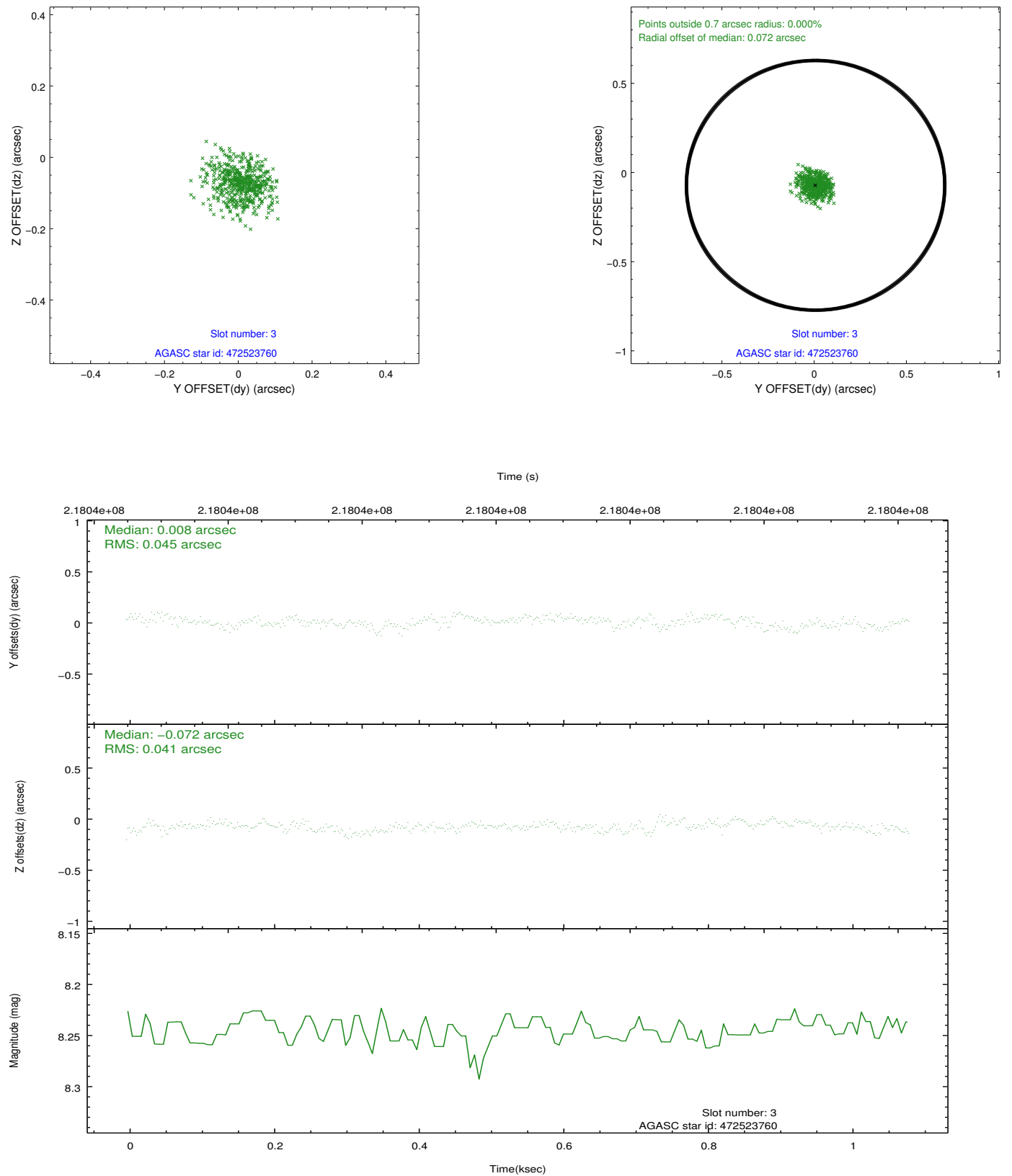


Slot Statistics

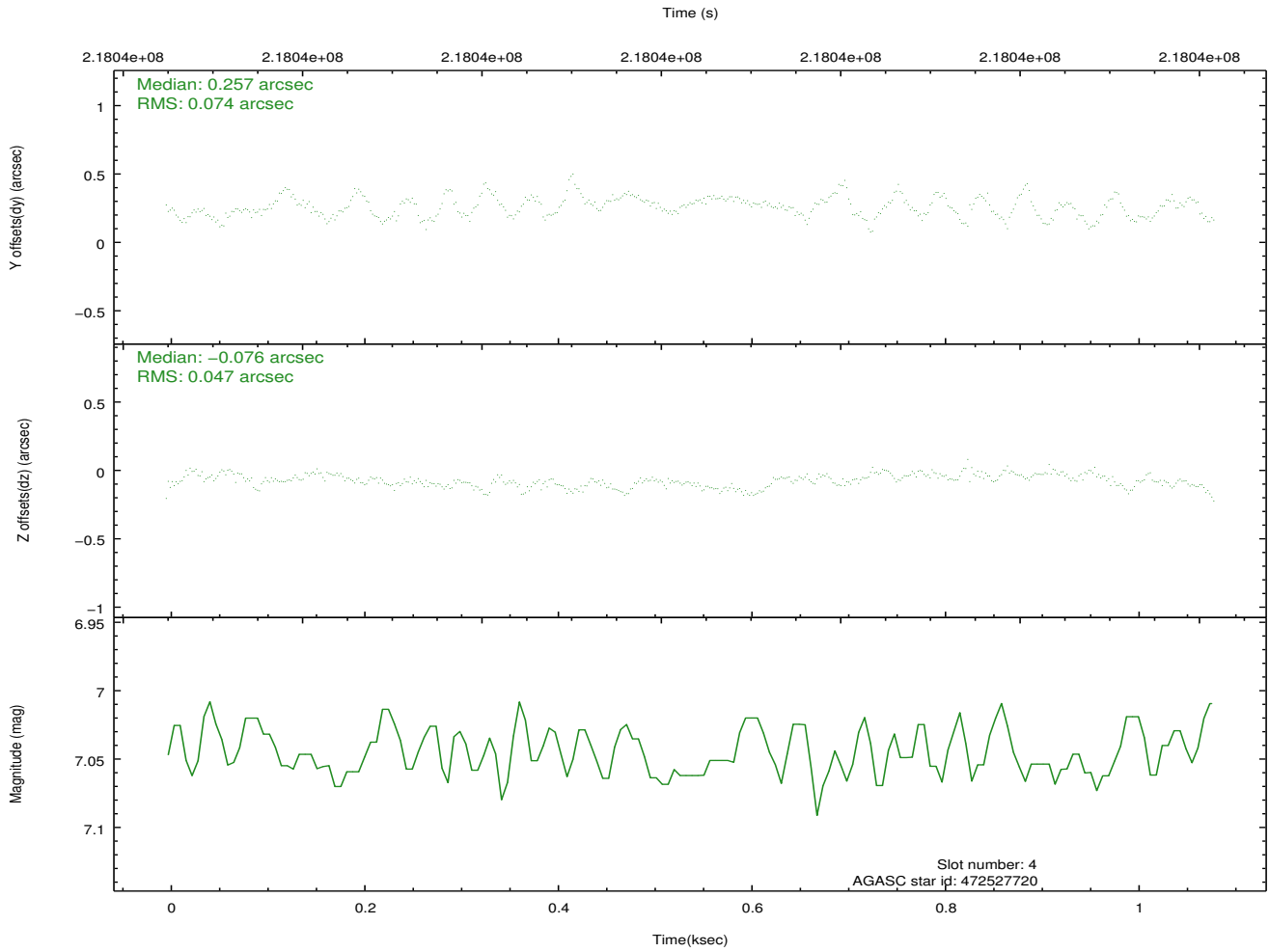
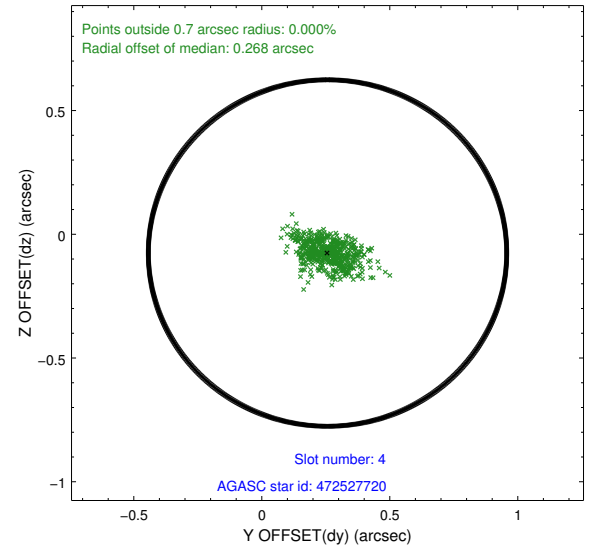
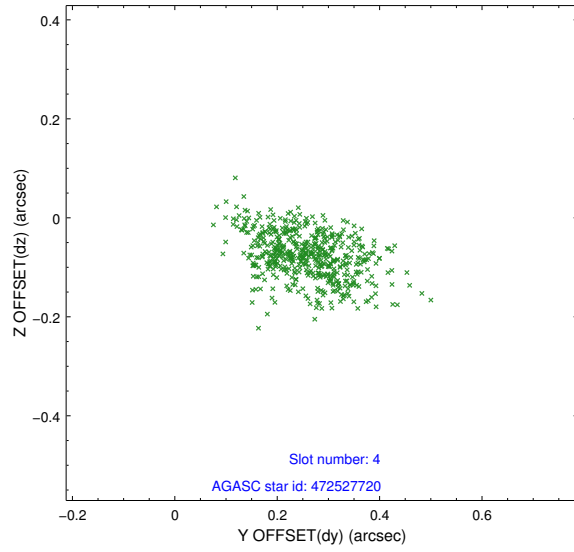
slot	status	id	mag	n_pts	med_dy	med_dz	dr1	dr2	ra	dec	mean_y	mean_z
0	FID	HRC-S-1	7.03	264	0.147	-0.162	0.007	0.010	0.000000	0.000000	-1161.97	-457.67
1	FID	HRC-S-2	7.03	264	0.155	-0.119	0.005	0.009	0.000000	0.000000	1233.31	-452.02
2	FID	HRC-S-3	7.04	264	0.088	-0.022	0.007	0.013	0.000000	0.000000	-1160.08	570.28
3	GUIDE	472523760	8.25	529	0.008	-0.072	0.065	0.104	331.645363	45.403260	1445.26	-1443.17
4	GUIDE	472527720	7.05	529	0.257	-0.076	0.093	0.156	331.460205	45.112509	2306.19	-2207.33
5	GUIDE	472535400	8.78	529	-0.271	-0.073	0.084	0.140	331.047001	46.353888	-2266.21	-1842.19
6	GUIDE	472655152	9.43	528	0.007	0.104	0.099	0.168	332.504239	45.862991	493.60	1106.28
7	GUIDE	472659832	9.46	528	-0.002	0.117	0.108	0.169	332.780399	46.098139	-114.07	2016.42

2.4 Star Slots

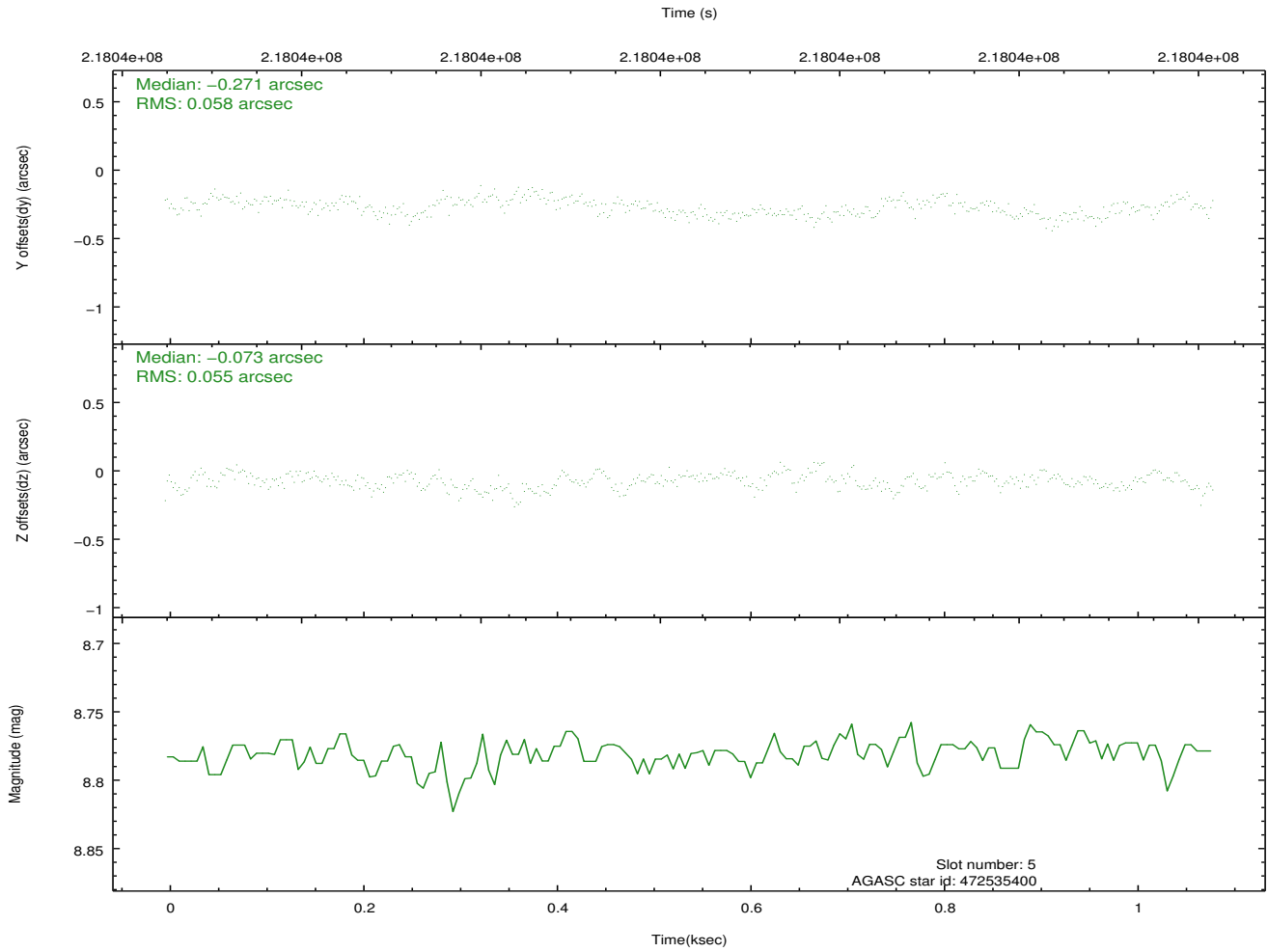
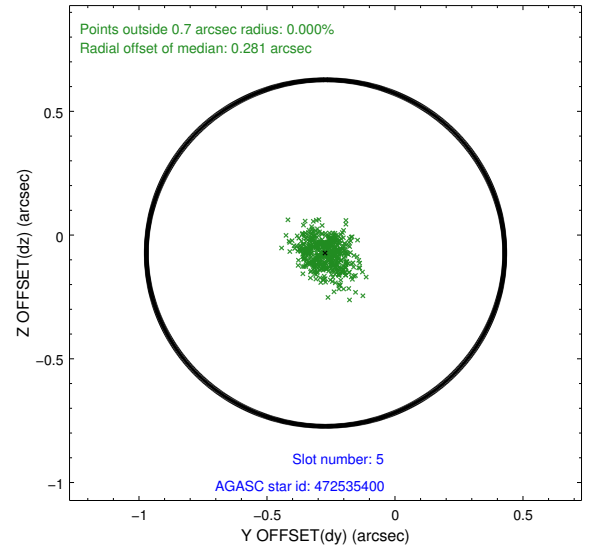
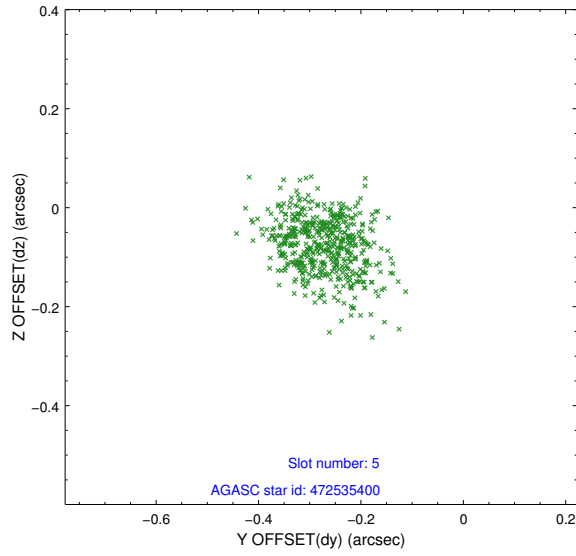
2.4.1 Slot 3



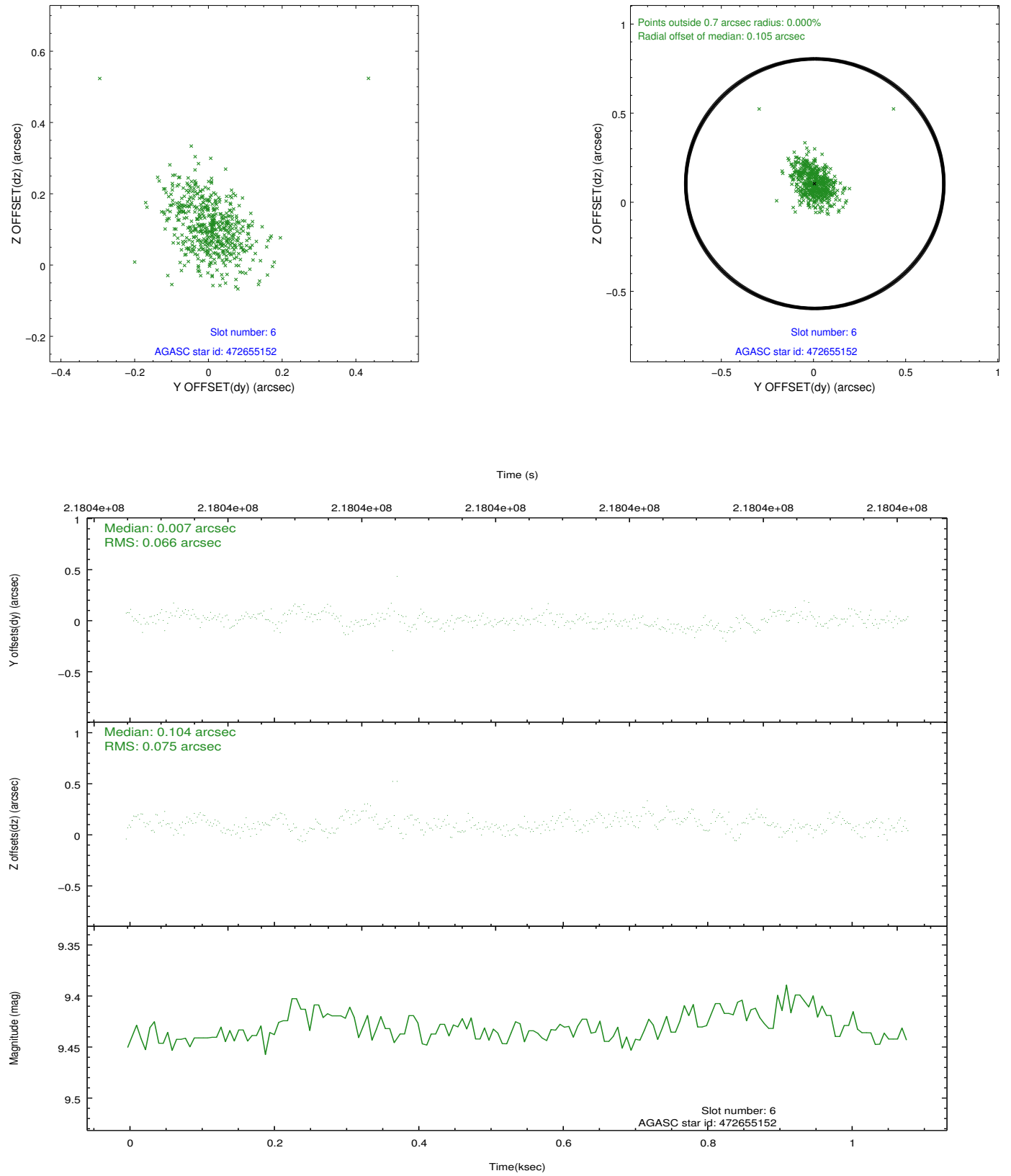
2.4.2 Slot 4



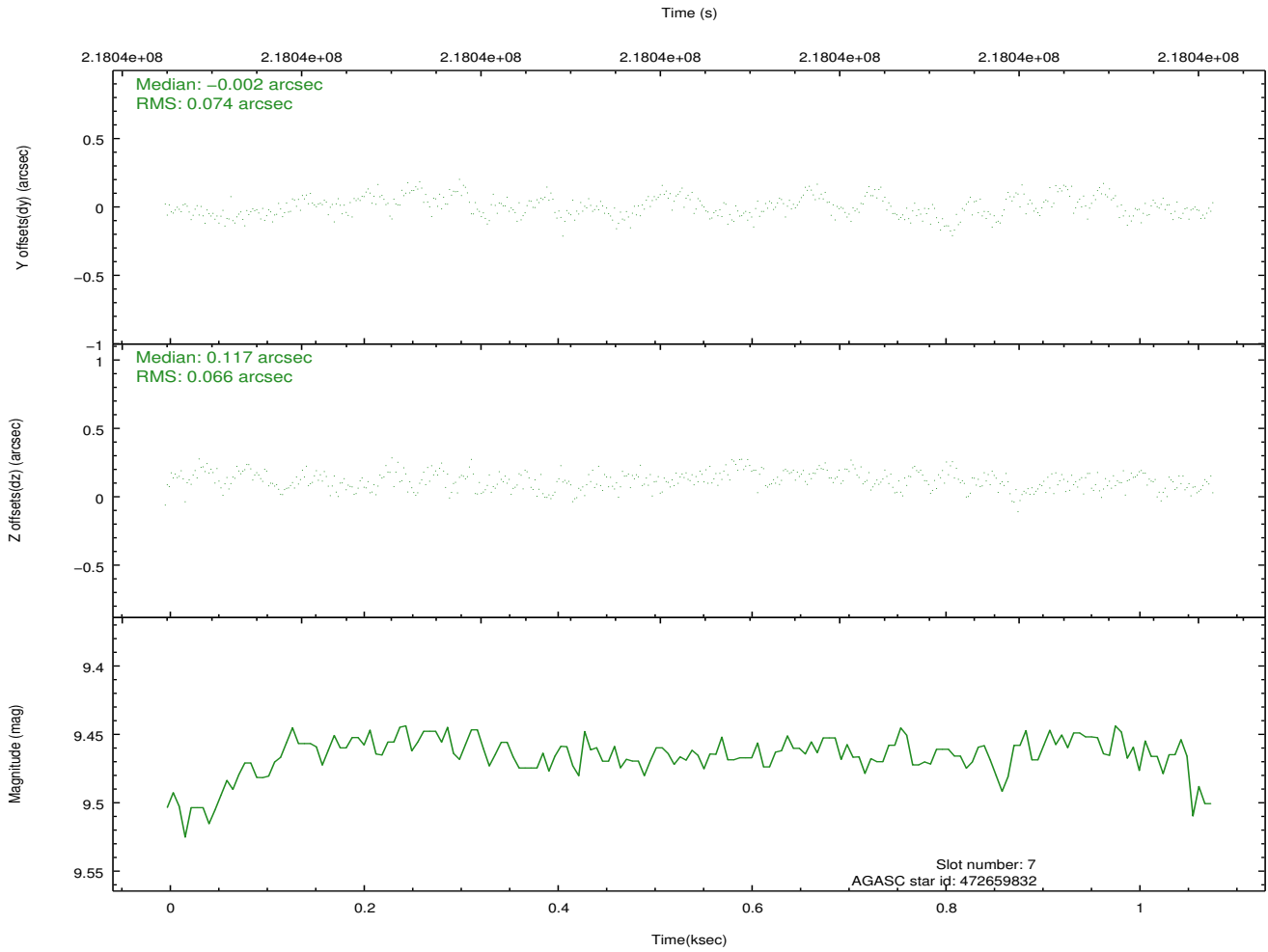
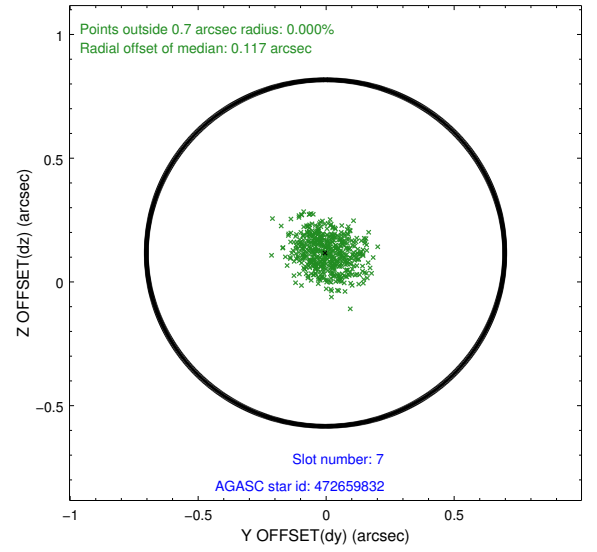
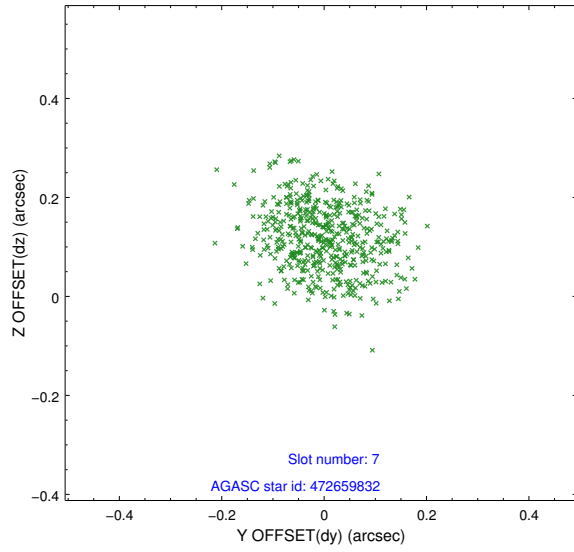
2.4.3 Slot 5



2.4.4 Slot 6

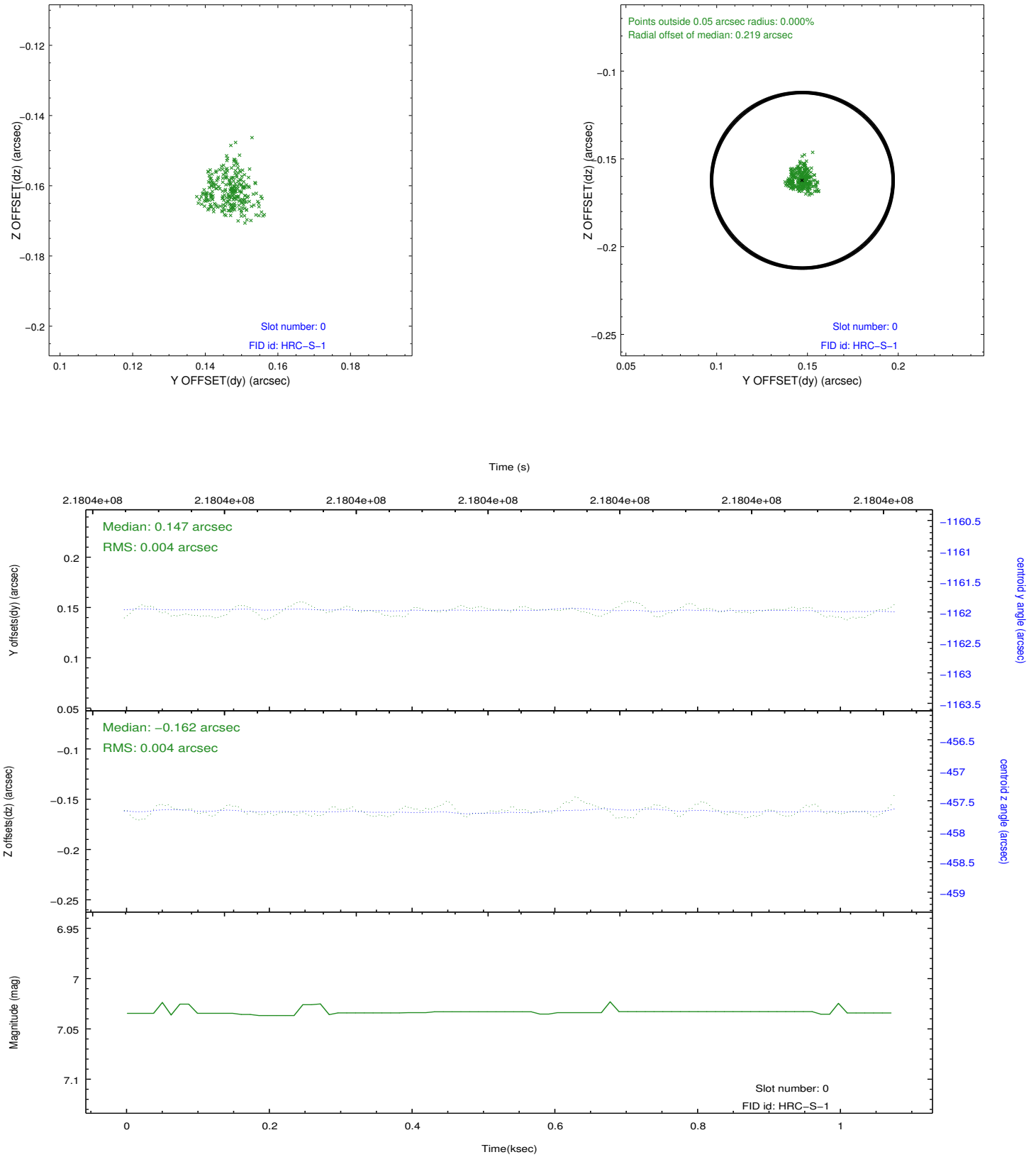


2.4.5 Slot 7

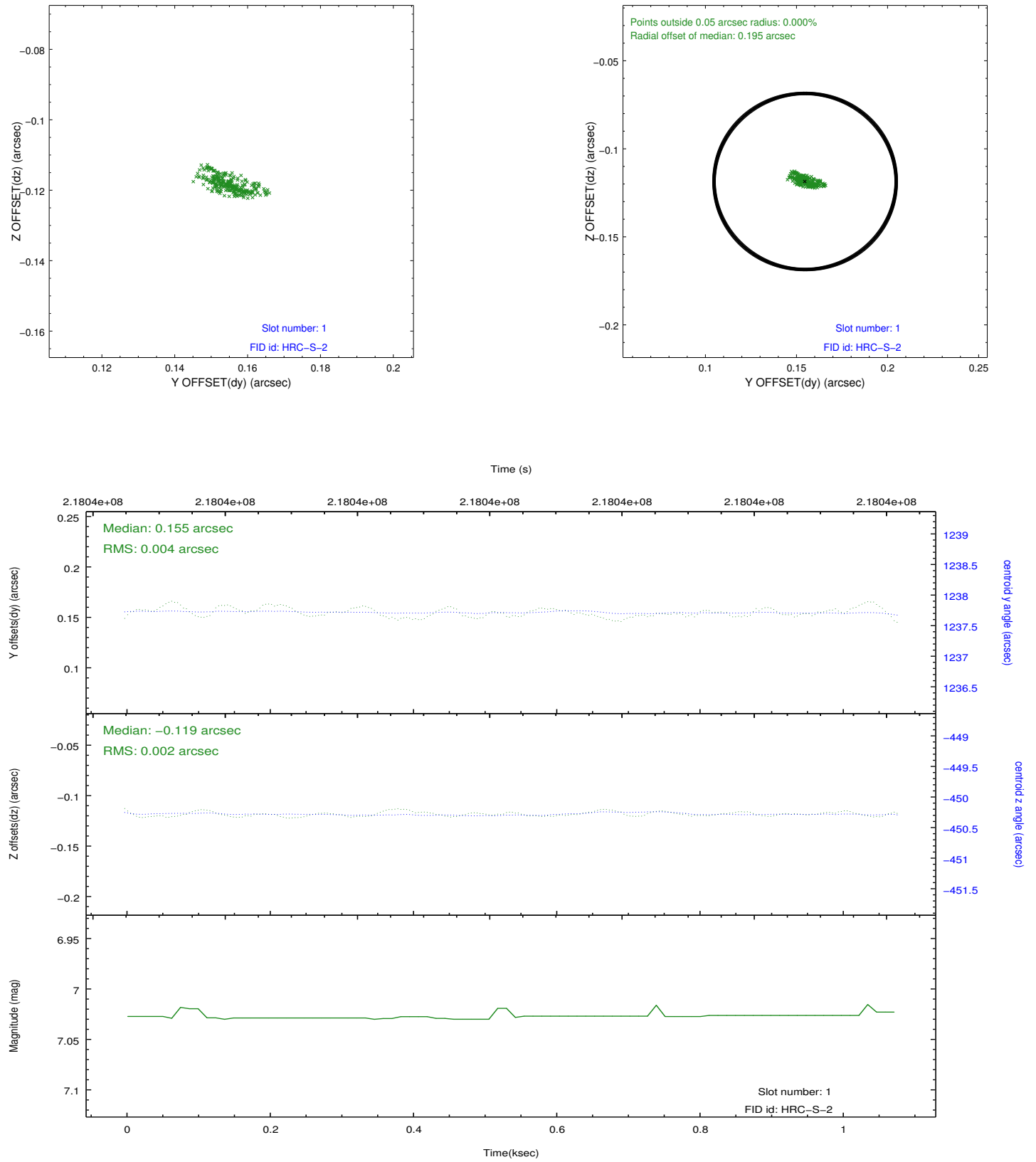


2.5 FID Slots

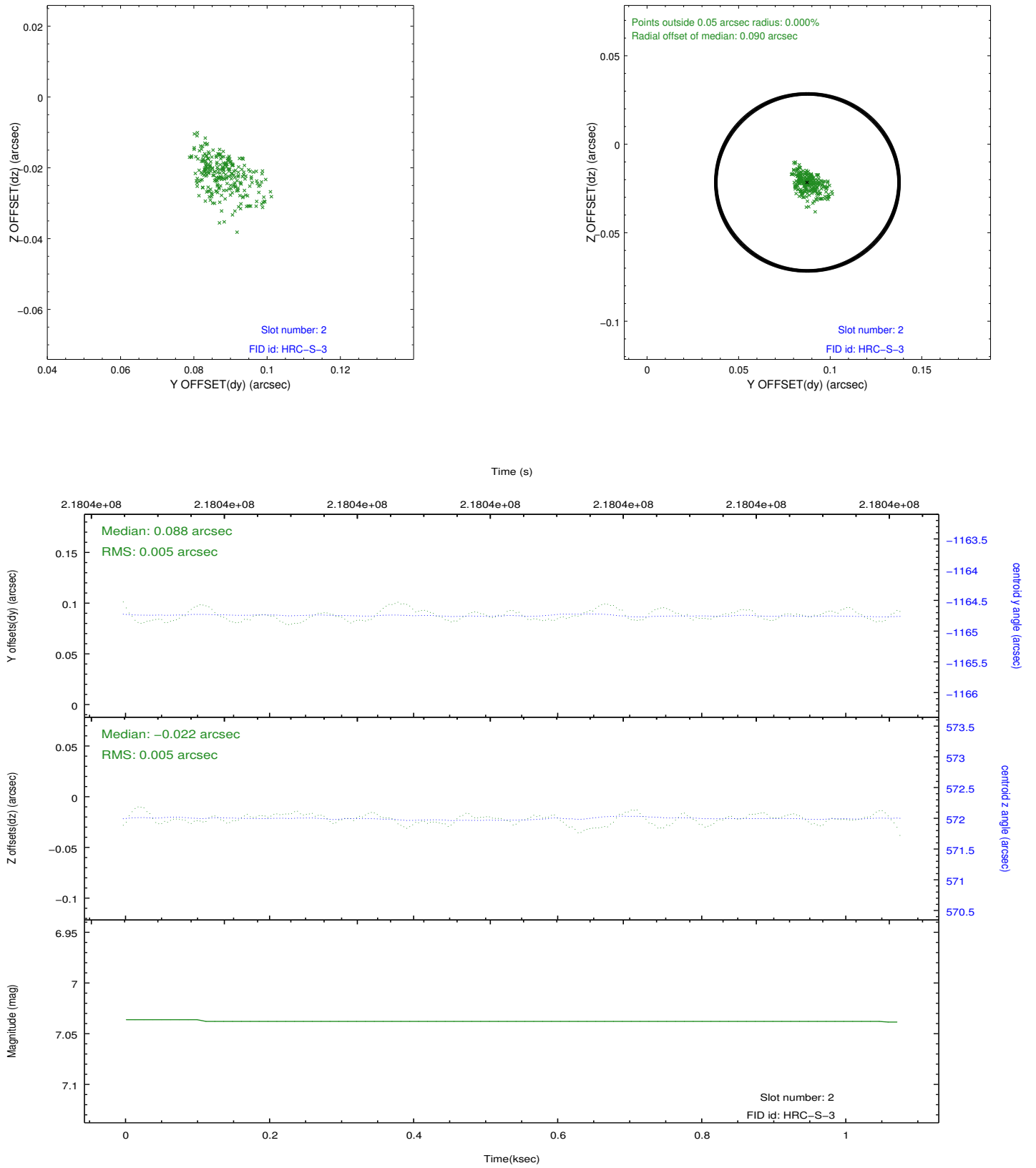
2.5.1 Slot 0



2.5.2 Slot 1



2.5.3 Slot 2



A Summary

A.1 Status

V&V Scientist	Jen Lauer
V&V Date (YYYY-MM-DD)	2013.01.02
V&V Edition	1
V&V Disposition and Status	OK
V&V Charge Time	1.052675

A.2 Comments