

V&V Reference Report

L2 ASCDS Version : 8.5

Observation 5076 - L2 Version 4
Chandra X-Ray Center

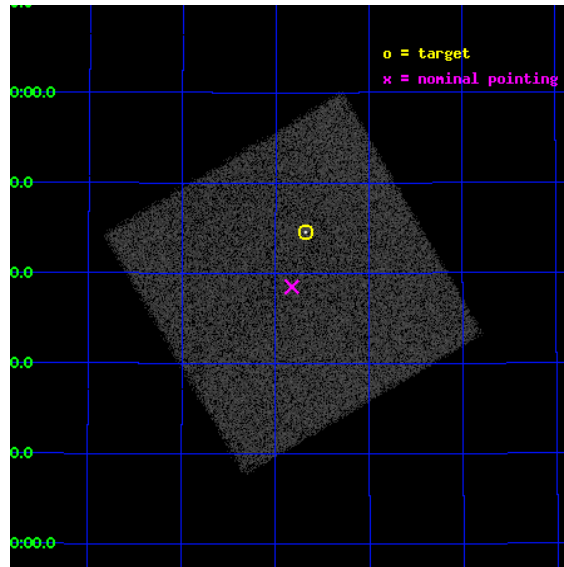
L2 Processing Date : Dec 11 2012

Contents

1	Front	2
2	OBI	3
2.1	OBI	3
2.1.1	Images	3
2.1.2	Parameters	4
2.1.3	Events	4
2.2	Compared Parameters	5
2.3	Aspect	6
2.4	Star Slots	9
2.4.1	Slot 3	9
2.4.2	Slot 4	10
2.4.3	Slot 5	11
2.4.4	Slot 6	12
2.4.5	Slot 7	13
2.5	FID Slots	14
2.5.1	Slot 0	14
2.5.2	Slot 1	15
2.5.3	Slot 2	16
A	Summary	17
A.1	Status	17
A.2	Comments	17

1 Front

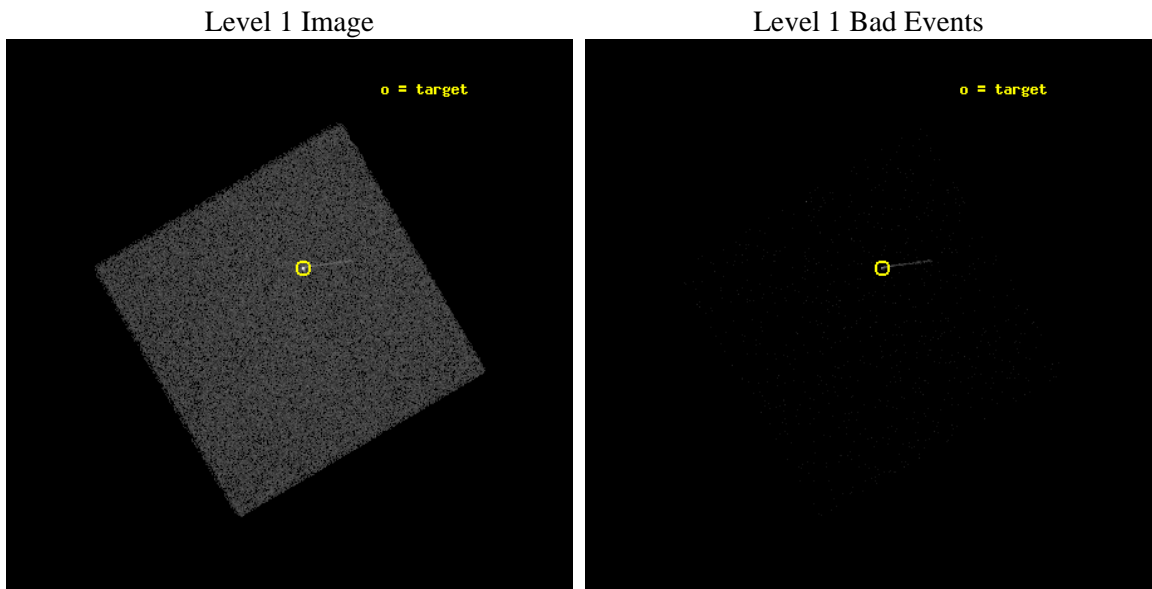
seq_num	290349	Sequence number
obs_id	5076	Observation id
title	AO5 Calibration Observations to Monitor the Spatial Variations in the HRC-I Gain	Proposal title
observer	Dr. CXC Calibration	Principal investigator
object	ArLac	Source name
ra_targ	332.17	Observer's specified target RA [deg]
dec_targ	45.742306	Observer's specified target Dec [deg]
ra_nom	332.20638428041	Nominal RA [deg]
dec_nom	45.641609487867	Nominal Dec [deg]
roll_nom	284.61711171154	Nominal Roll [deg]
revision	4	Processing version of data
ontime	1083.4250486791	[s]
livetime	1047.9904528234	Ontime multiplied by DTCOR
l2events	84728	Number of level 2 events



2 OBI

2.1 OBI

2.1.1 Images



2.1.2 Parameters

obi_num	1	Obi number	sched_exp_time	900.000000	[s] Scheduled observation exposure time
ascdsver	8.5	Processing system revision	ontime	1083.4250486791	[s]
caldbver	4.5.4	 	l1events	149584	Number of level 1 events
date	2012-12-11T23:47:19	Date and time of file creation			
revision	4	Processing version of data			

2.1.3 Events

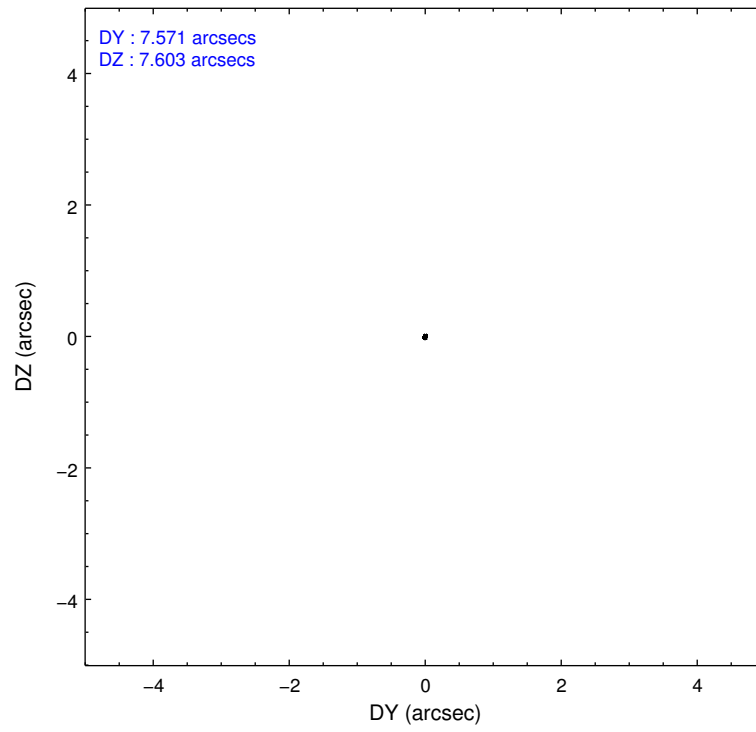
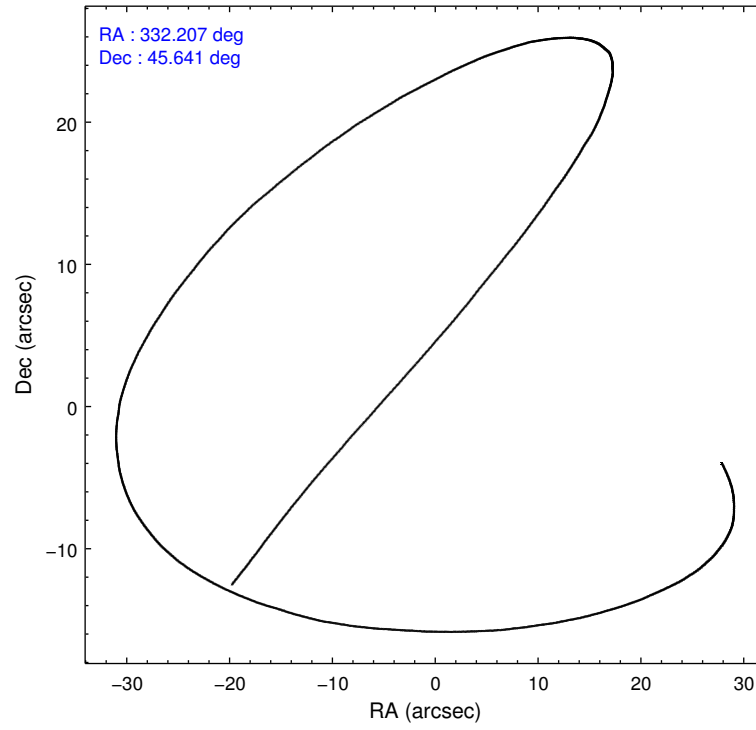
Level 1 Events

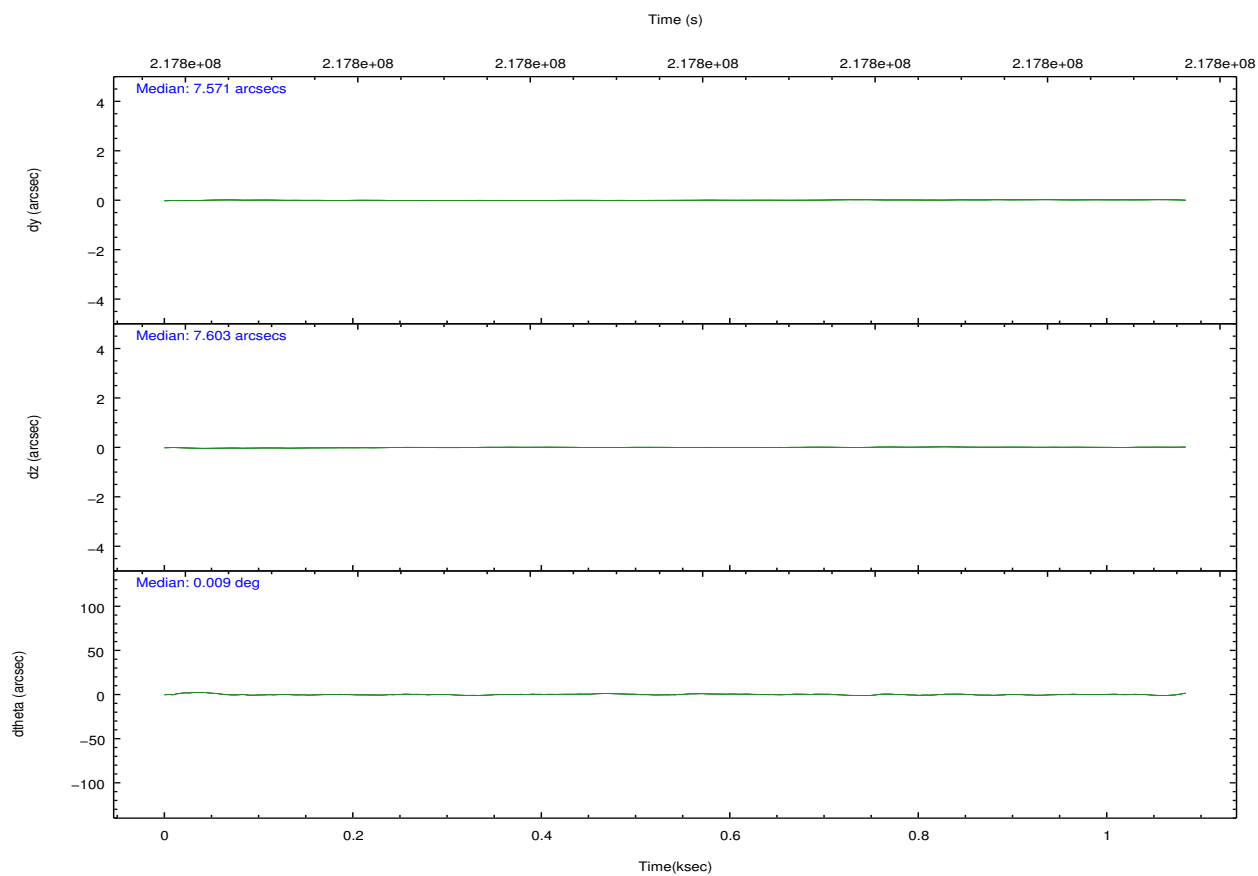
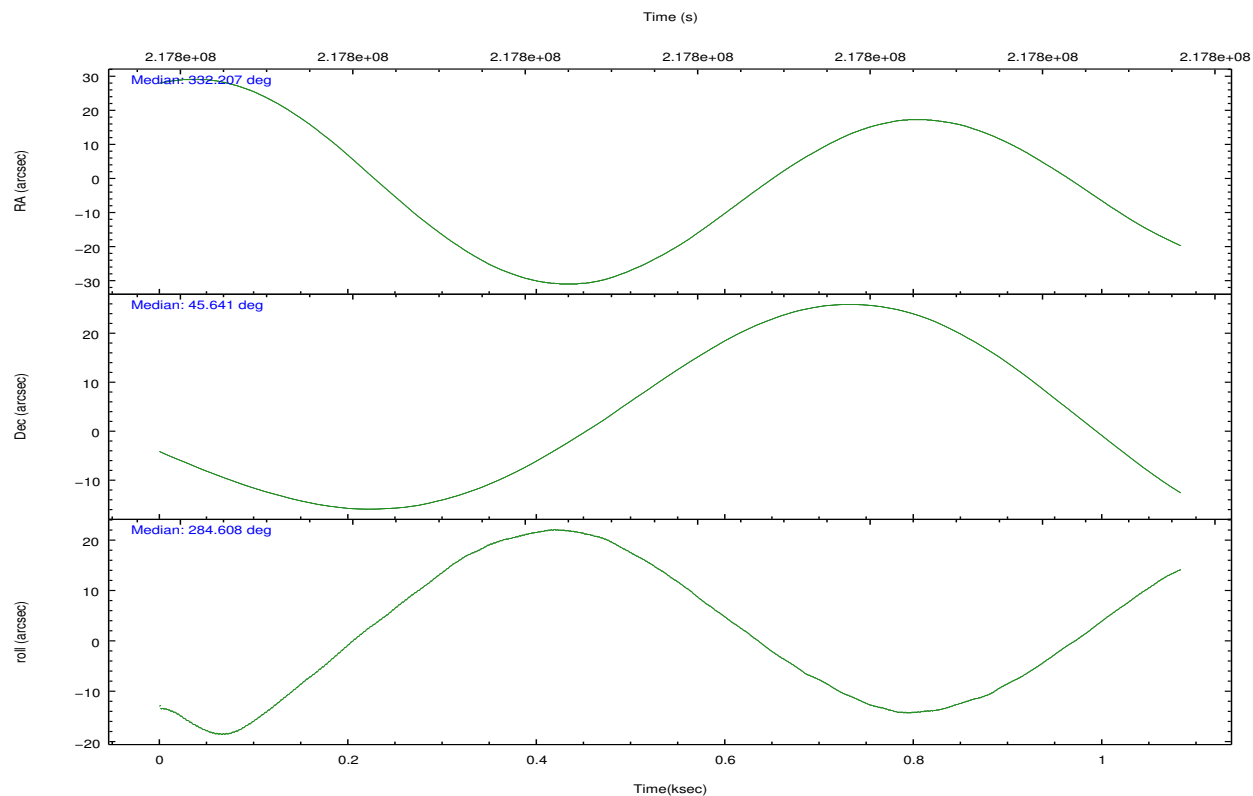
	segment 0
level 1 events	149584
rejected events	31054
rejected %	20%

2.2 Compared Parameters

Parameter	Planned	Actual	Parameter	Planned	Actual
Instrument	HRC	HRC	Obspar format version number	7	7
Detector	HRC-I	HRC-I	Obspar file type	PREDICTED	ACTUAL
Grating	NONE	NONE	Obspar update status	NONE	UPDATED
Data mode	OBSERVING	OBSERVING			
Observation mode	POINTING	POINTING			
[deg] Pointing RA	332.177682	332.206384280408			
[deg] Pointing Dec	45.660309	45.64160948786737			
[deg] Pointing Roll	284.733096	284.6171117115421			
[mm] SIM focus pos	-1.040293	-1.038866356238299			
[mm] SIM defocus	0	0.001426264420575141			
[mm] SIM translation stage pos	126.985494	126.9854943052878			
[mm] SIM translation stage offset	0	-5.413686238853188e-06			
[s] Observation start time (MET)	217797207.184000	217796831.03372			
Observation start date	2004-11-25T19:12:23	2004-11-25T19:07:11			
[s] Observation end time (MET)	217798107.184000	217798241.43378			
Observation end date	2004-11-25T19:27:23	2004-11-25T19:30:41			

2.3 Aspect



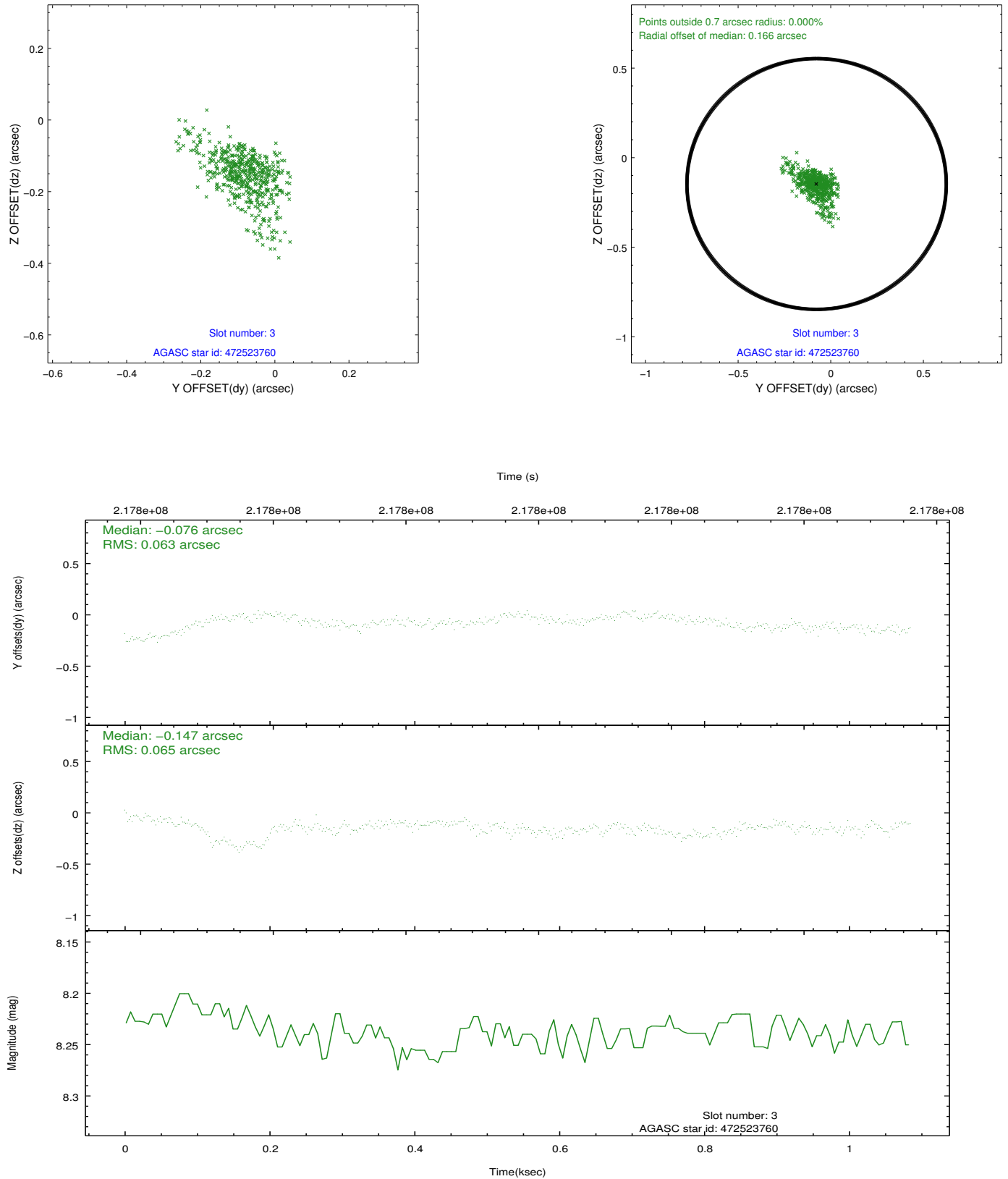


Slot Statistics

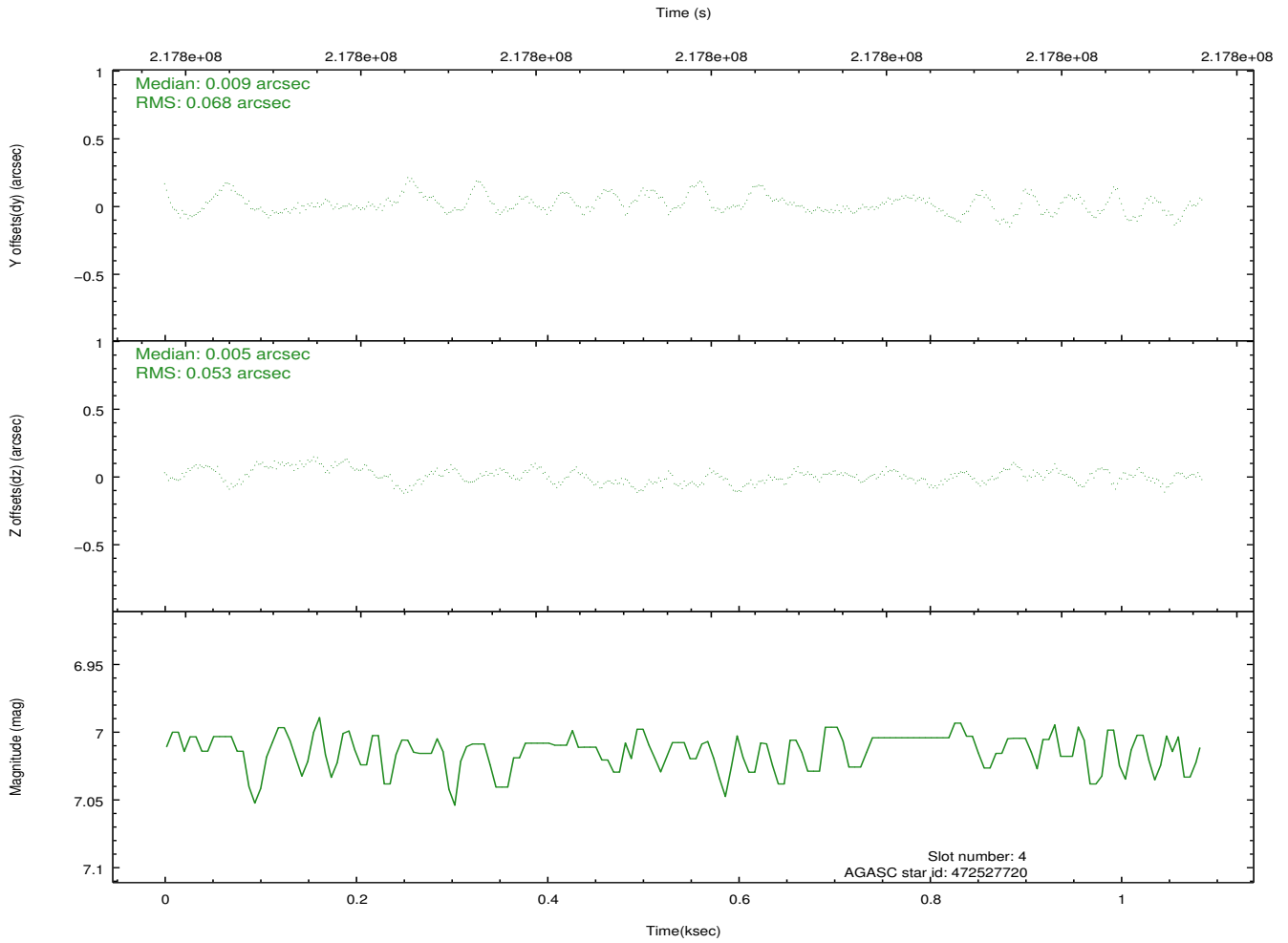
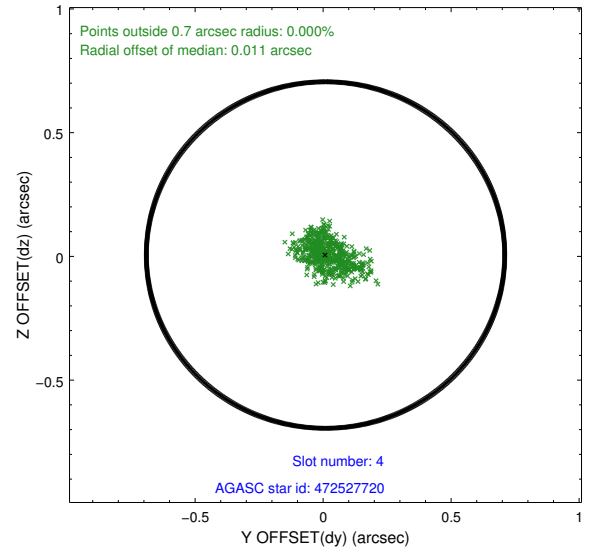
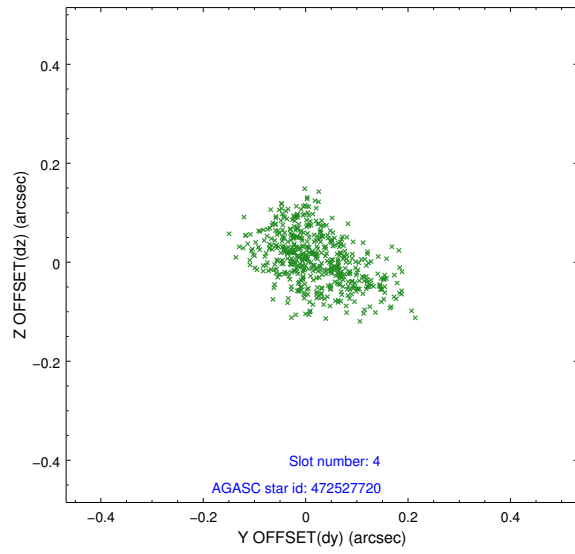
slot	status	id	mag	n_pts	med_dy	med_dz	dr1	dr2	ra	dec	mean_y	mean_z
0	FID	HRC-I-1	7.01	265	0.002	0.035	0.006	0.011	0.000000	0.000000	-763.19	-1295.47
1	FID	HRC-I-2	7.05	265	0.143	-0.118	0.006	0.010	0.000000	0.000000	846.71	-1302.10
2	FID	HRC-I-3	7.10	265	-0.026	-0.007	0.006	0.010	0.000000	0.000000	-1188.48	1004.14
3	GUIDE	472523760	8.24	530	-0.076	-0.147	0.087	0.187	331.645363	45.403260	549.04	-1537.64
4	GUIDE	472527720	7.01	530	0.009	0.005	0.092	0.150	331.460205	45.112509	1437.67	-2267.12
5	GUIDE	472654568	9.43	529	0.160	0.019	0.132	0.232	332.194449	45.063576	2091.84	-511.15
6	GUIDE	472655152	9.43	530	-0.002	0.083	0.097	0.183	332.504239	45.862991	-494.81	974.74
7	GUIDE	472659832	9.46	529	-0.086	0.061	0.120	0.204	332.780399	46.098139	-1148.10	1857.07

2.4 Star Slots

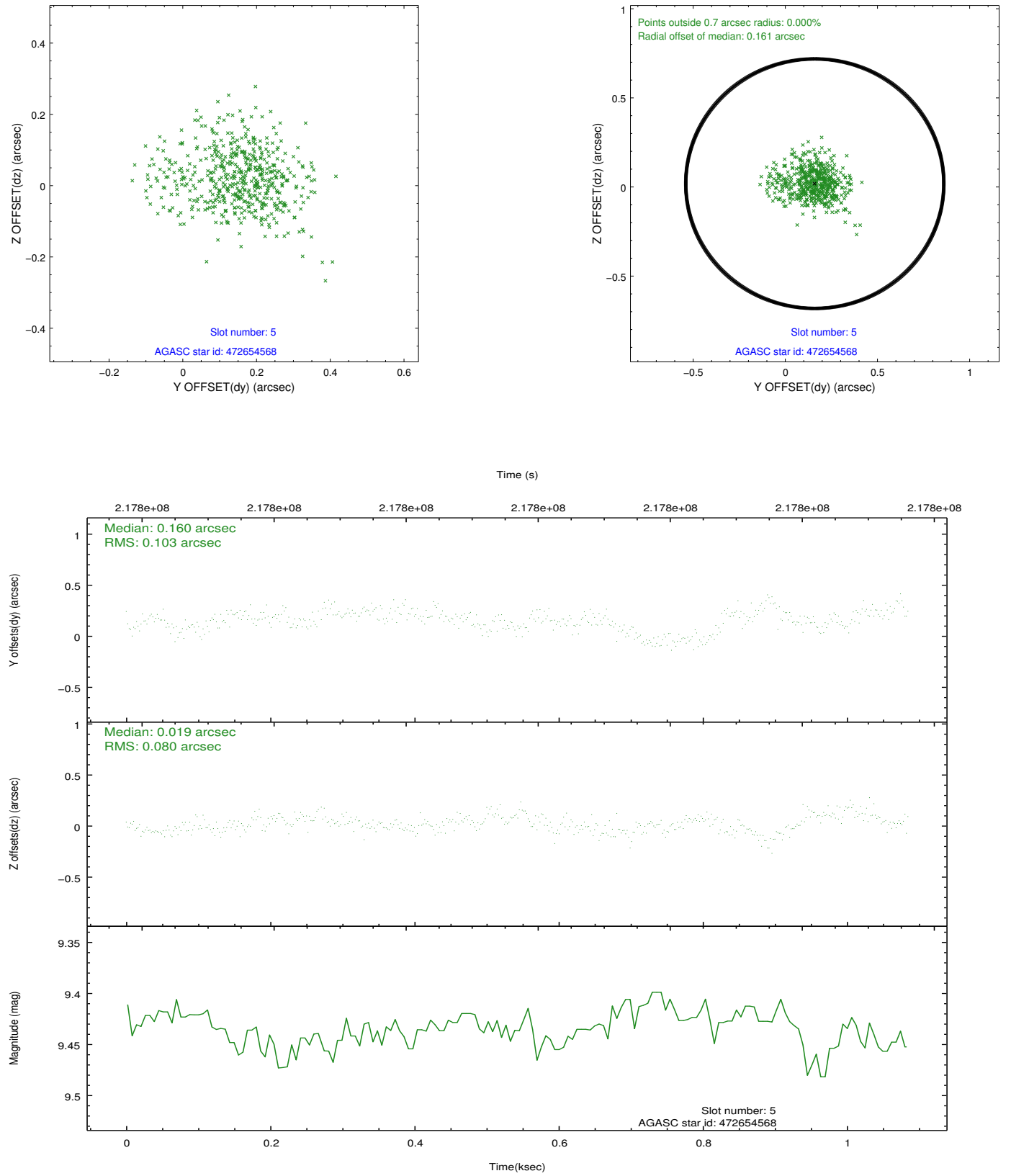
2.4.1 Slot 3



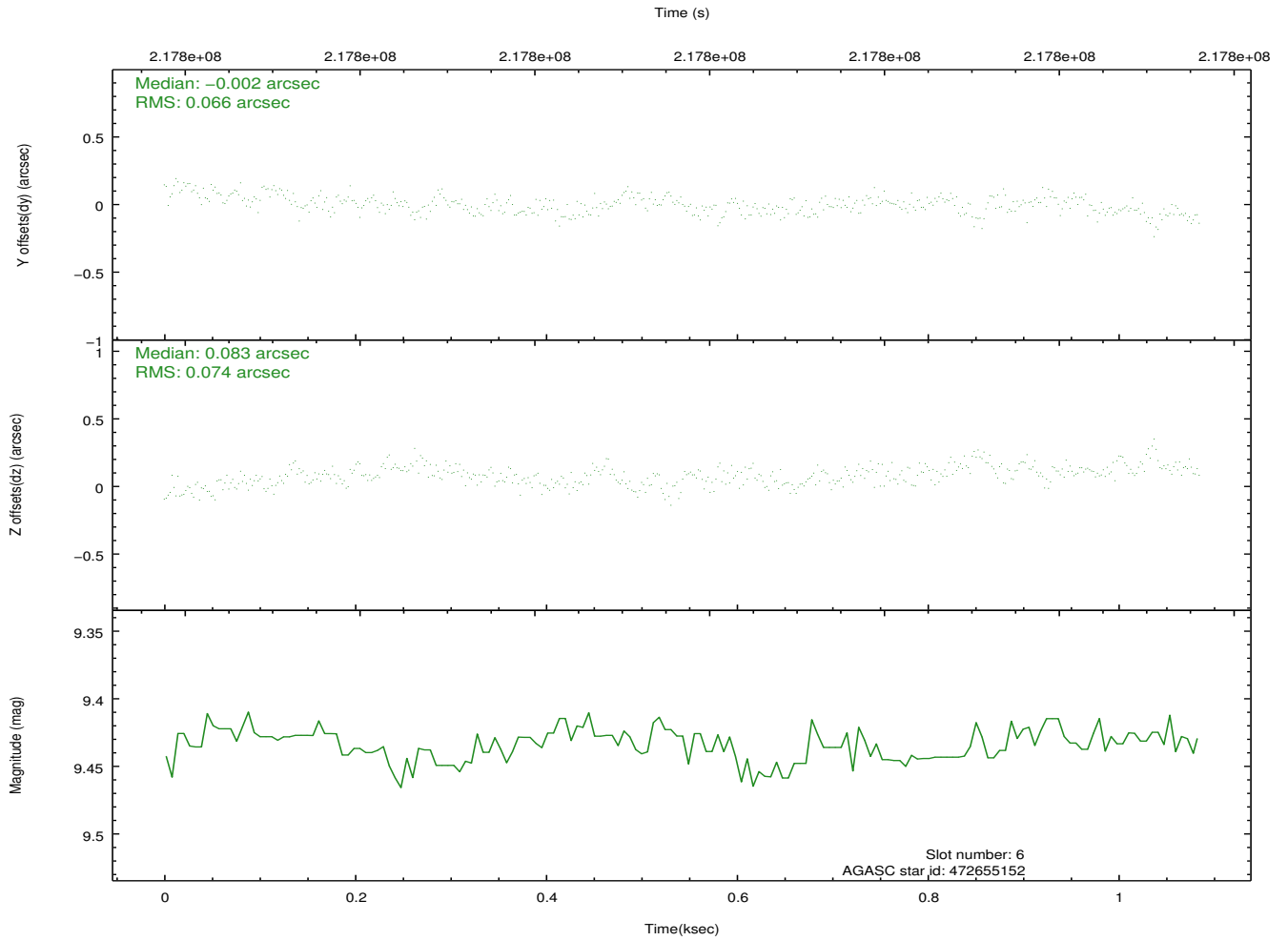
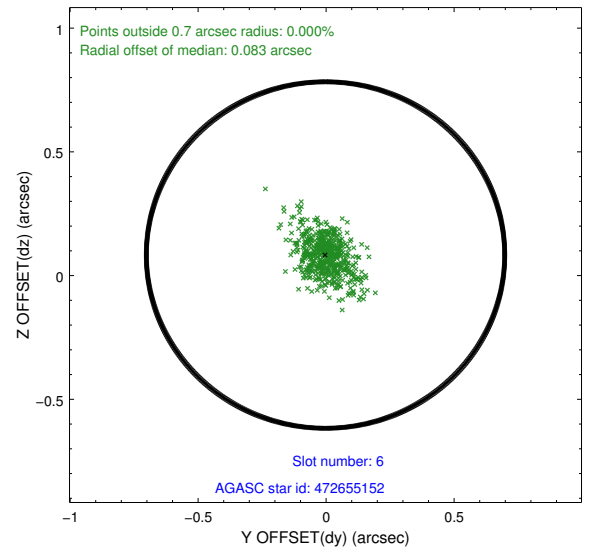
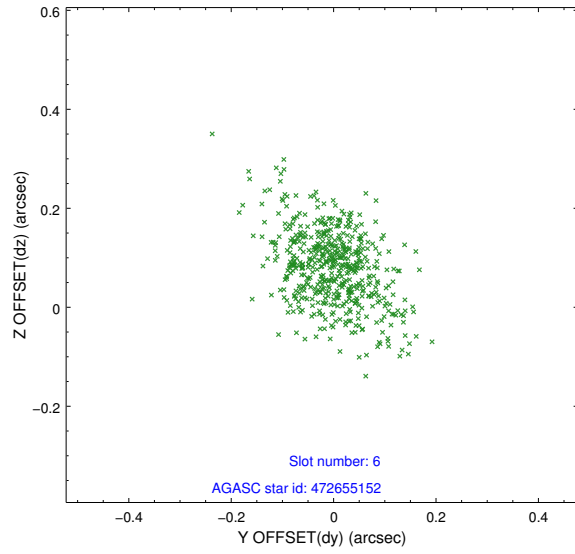
2.4.2 Slot 4



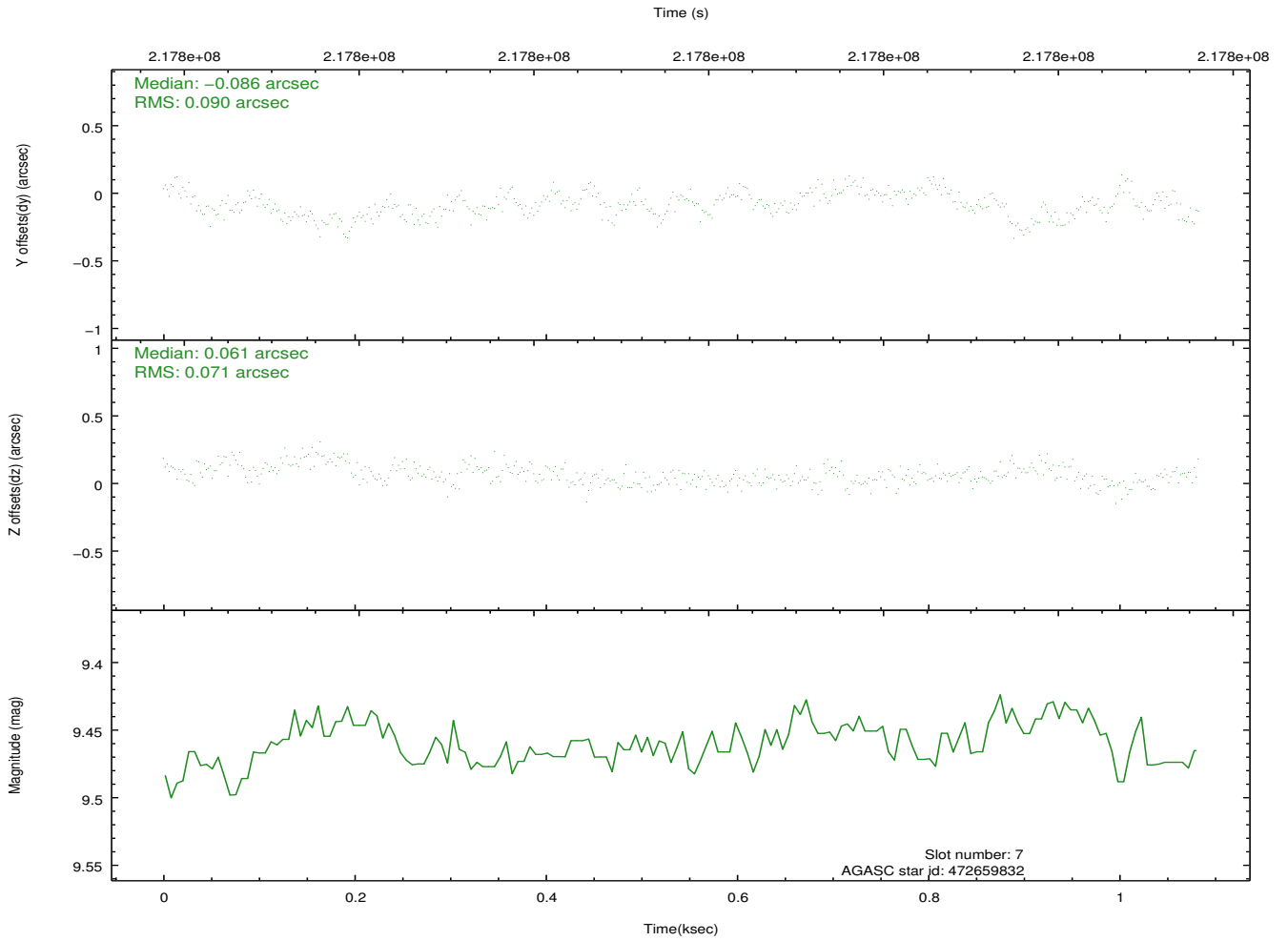
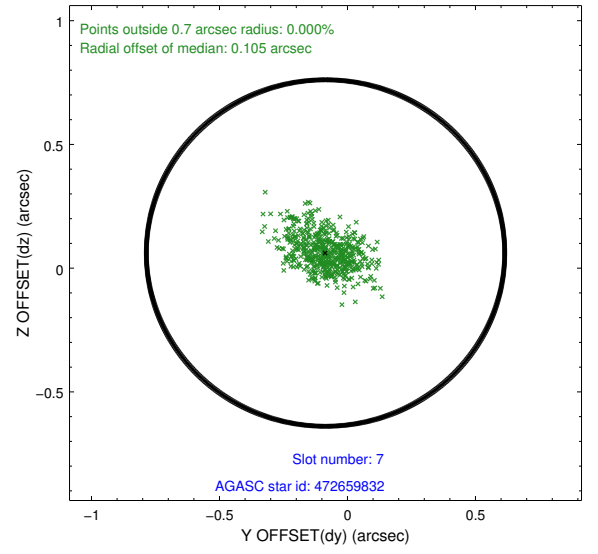
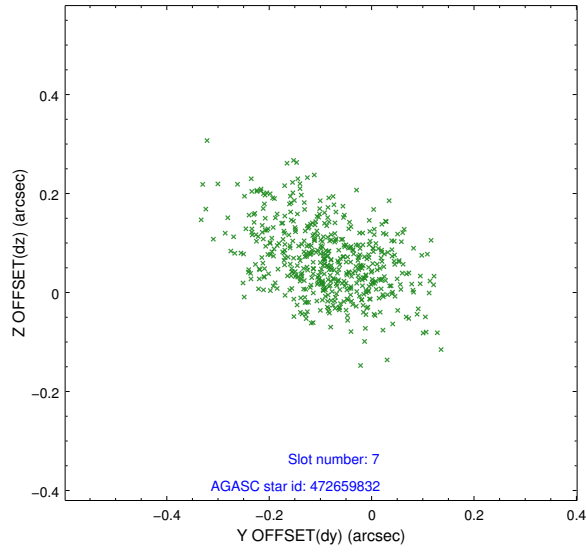
2.4.3 Slot 5



2.4.4 Slot 6

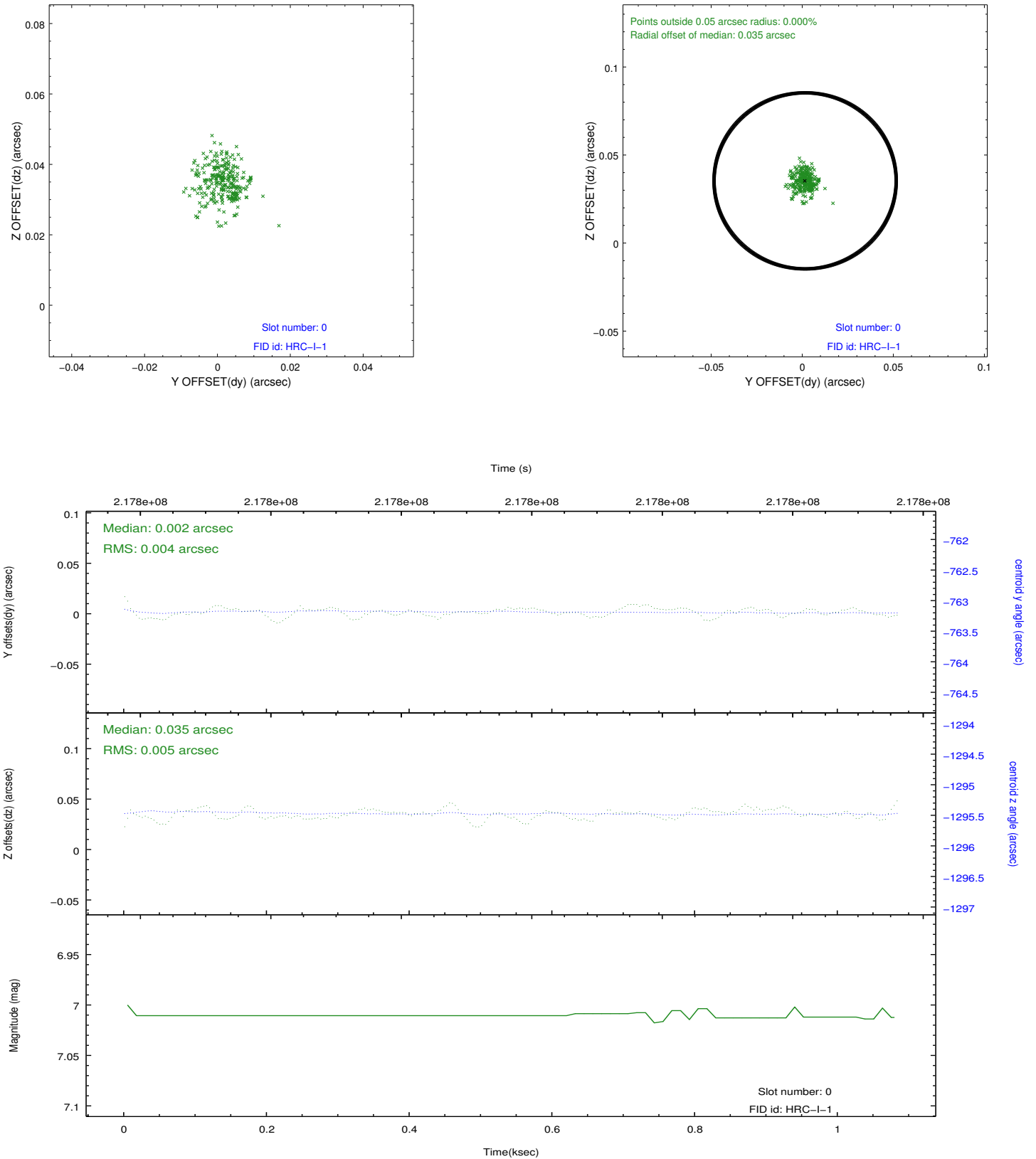


2.4.5 Slot 7

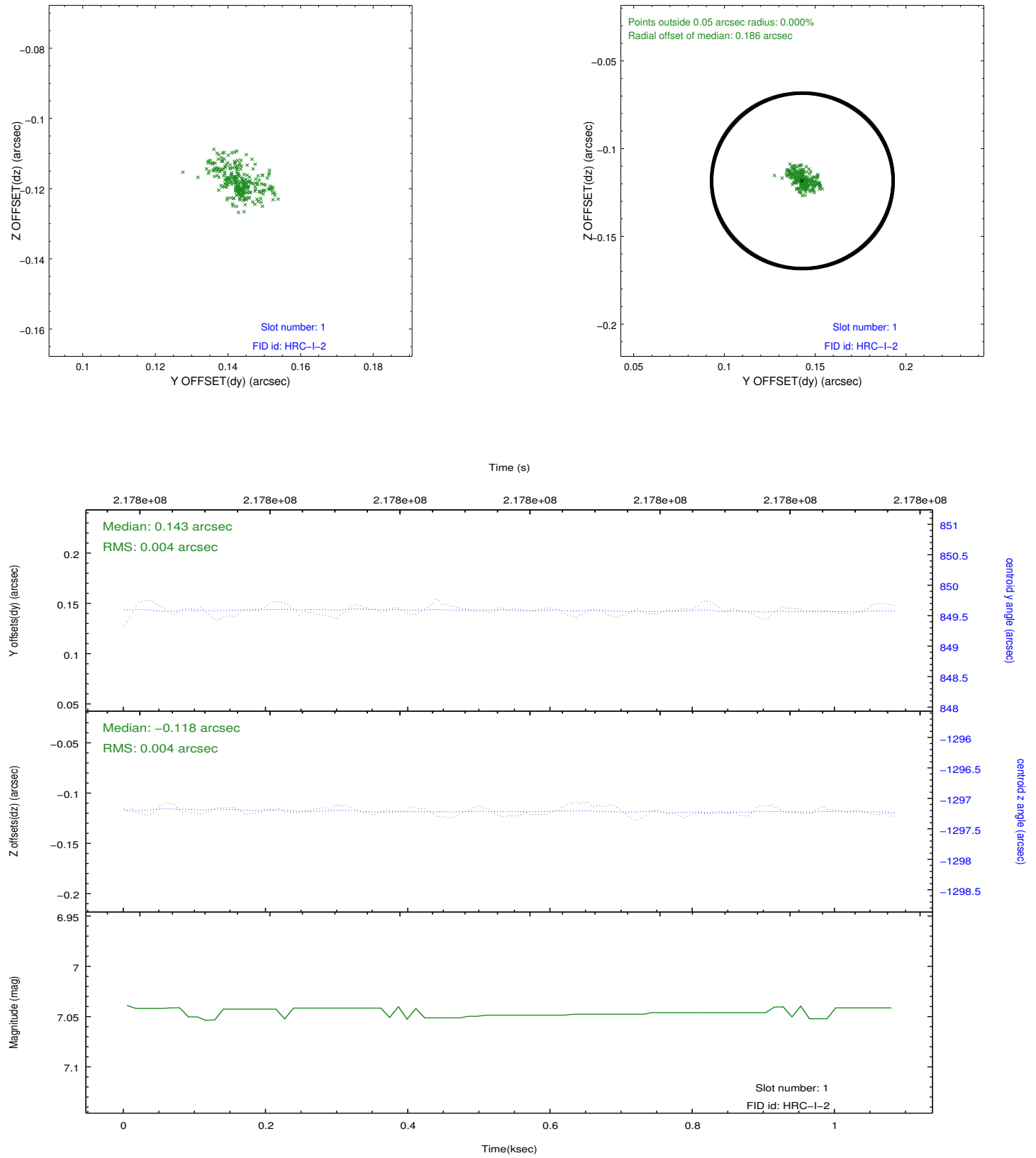


2.5 FID Slots

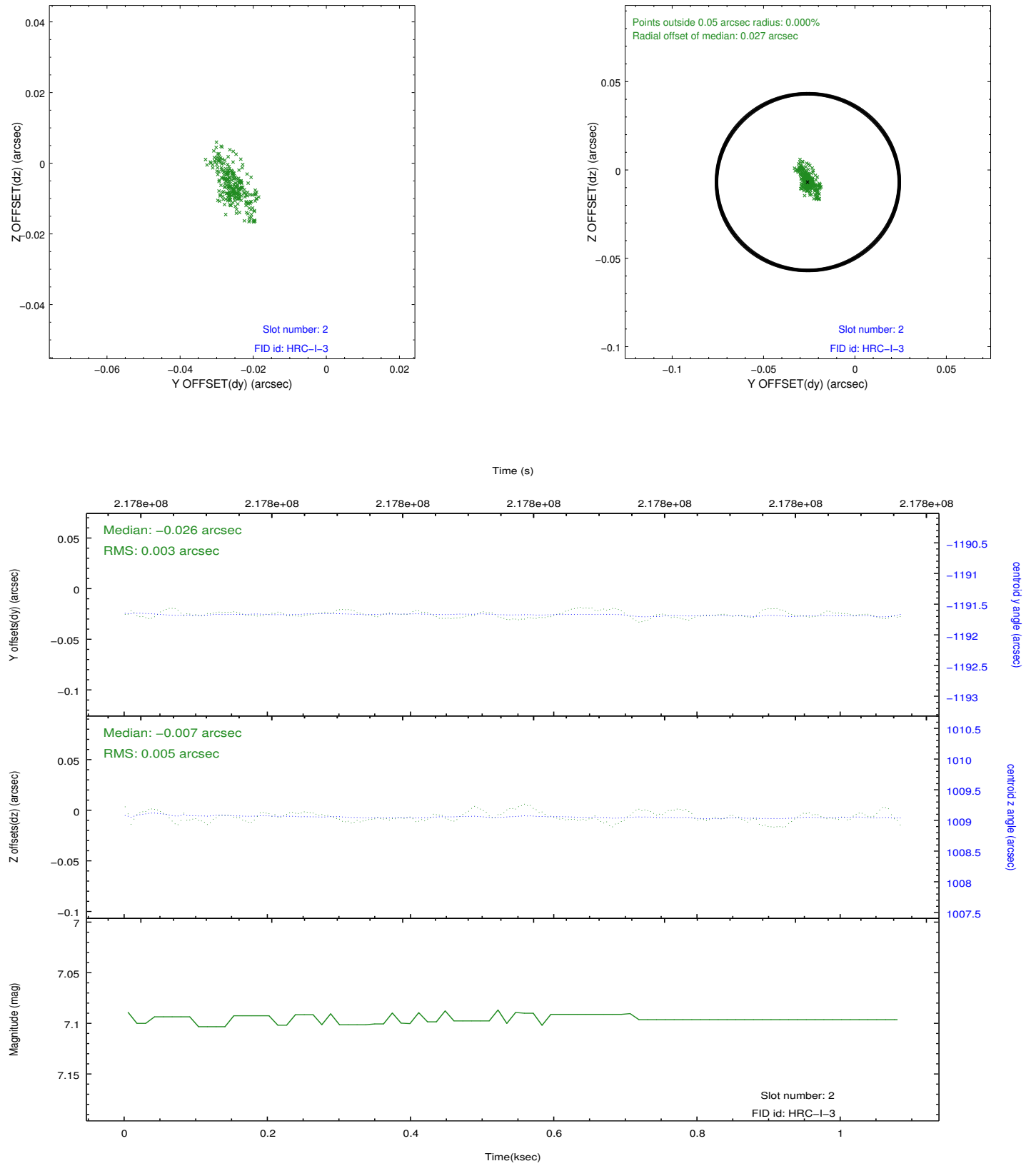
2.5.1 Slot 0



2.5.2 Slot 1



2.5.3 Slot 2



A Summary

A.1 Status

V&V Scientist	Jen Lauer
V&V Date (YYYY-MM-DD)	2013.01.02
V&V Edition	1
V&V Disposition and Status	OK
V&V Charge Time	1.083425

A.2 Comments