

V&V Reference Report

L2 ASCDS Version : 7.6.9

Observation 3573 - L2 Version 001
Chandra X-Ray Center

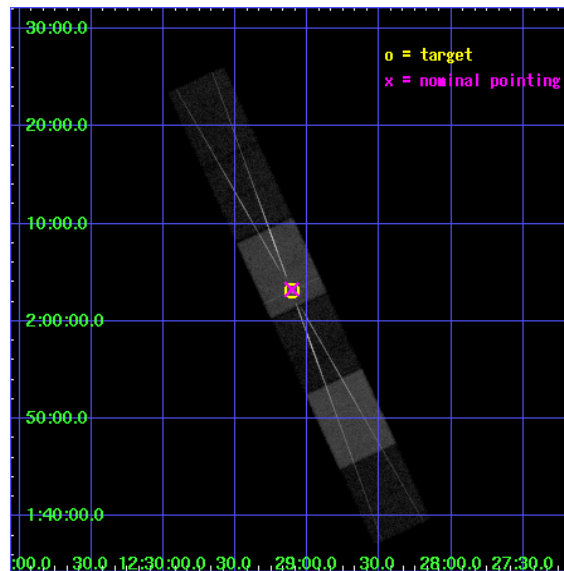
L2 Processing Date : Sep 18 2006

Contents

1	Front	2
2	OBI	3
2.1	OBI	3
2.1.1	Images	3
2.1.2	Bias	3
2.1.3	Parameters	4
2.1.4	Events	4
2.2	Compared Parameters	5
2.3	Aspect	6
2.4	Star Slots	9
2.4.1	Slot 3	9
2.4.2	Slot 4	10
2.4.3	Slot 5	11
2.4.4	Slot 6	12
2.4.5	Slot 7	13
2.5	FID Slots	14
2.5.1	Slot 0	14
2.5.2	Slot 1	15
2.5.3	Slot 2	16
3	Gratings	17
3.1	HEG Arm	17
3.2	MEG Arm	19
A	Summary	21
A.1	Status	21
A.2	Comments	21

1 Front

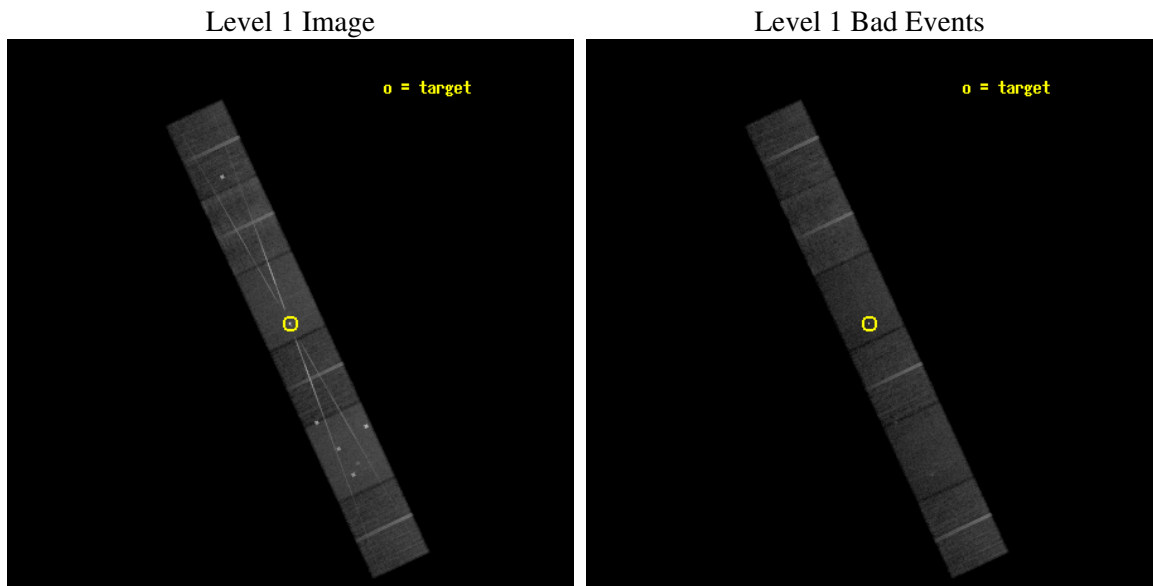
seq_num	790076
obs_id	3573
title	AO4 CALIBRATION OBSERVATIONS OF 3C273
observer	Dr. CXC Calibration
object	3C273
dtcycle	0
cycle	P
ra_targ	187.277917
dec_targ	2.052389
ra_nom	187.27699636271
dec_nom	2.0544051114081
roll_nom	245.06387547171
revision	2
ontime	30162.5
livetime	29675.349463212
ontime4	30162.5
ontime5	30162.5
ontime6	30162.5
ontime7	30162.5
ontime8	30162.5
ontime9	30162.5
l2events	310756



2 OBI

2.1 OBI

2.1.1 Images

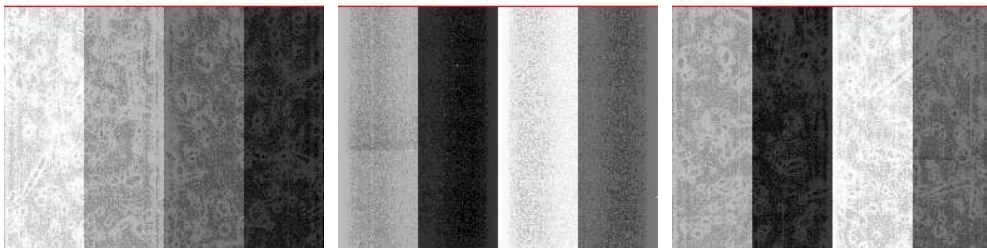


2.1.2 Bias

Chip 4

Chip 5

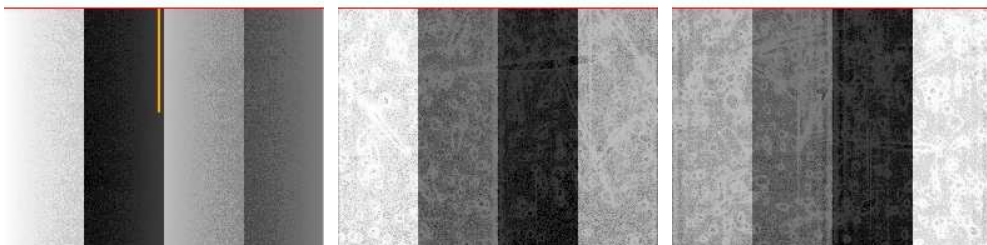
Chip 6



Chip 7

Chip 8

Chip 9



2.1.3 Parameters

obi_num	1
ascdsver	7.6.9
caldsver	3.2.3
date	2006-09-18T07:28:52
revision	2

sched_exp_time	30000.000000
ontime	30166.861613244
ontime4	30166.861613244
ontime5	30166.861613244
ontime6	30166.861613244
ontime7	30166.861613244
ontime8	30166.861613244
ontime9	30166.861613244
l1events	1187569

2.1.4 Events

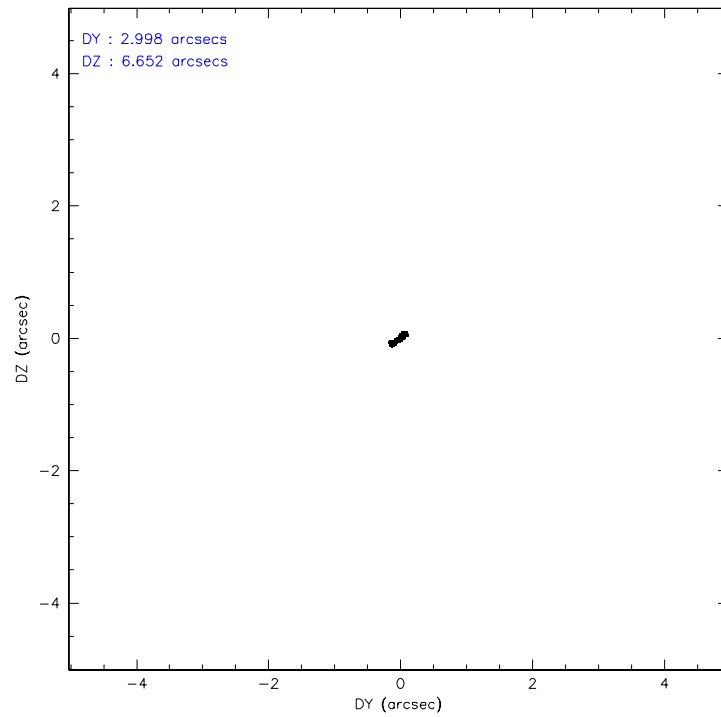
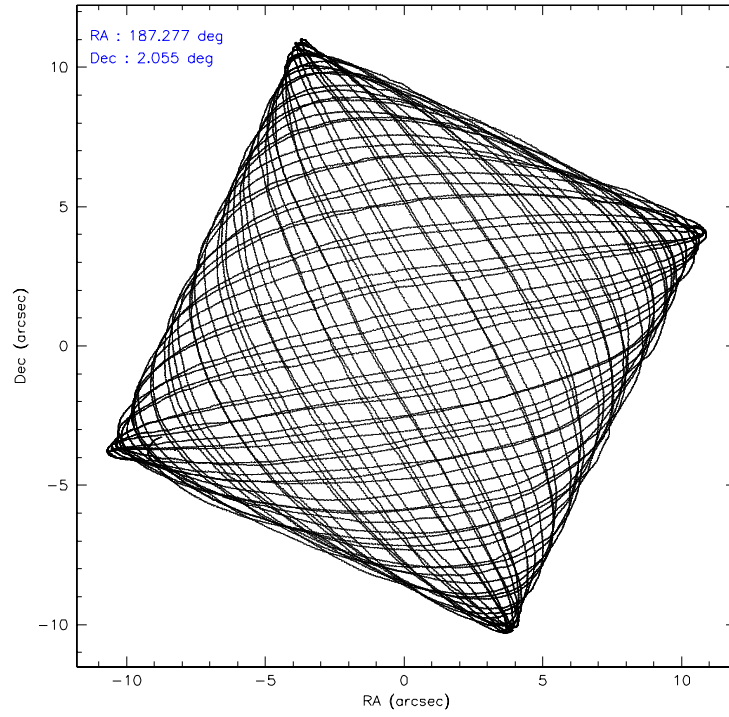
	ccd 4	ccd 5	ccd 6	ccd 7	ccd 8	ccd 9
level 1 events	166460	240624	179792	234045	207125	159523
rejected events	145685	119778	134478	125045	153873	133964
rejected %	87%	49%	74%	53%	74%	83%

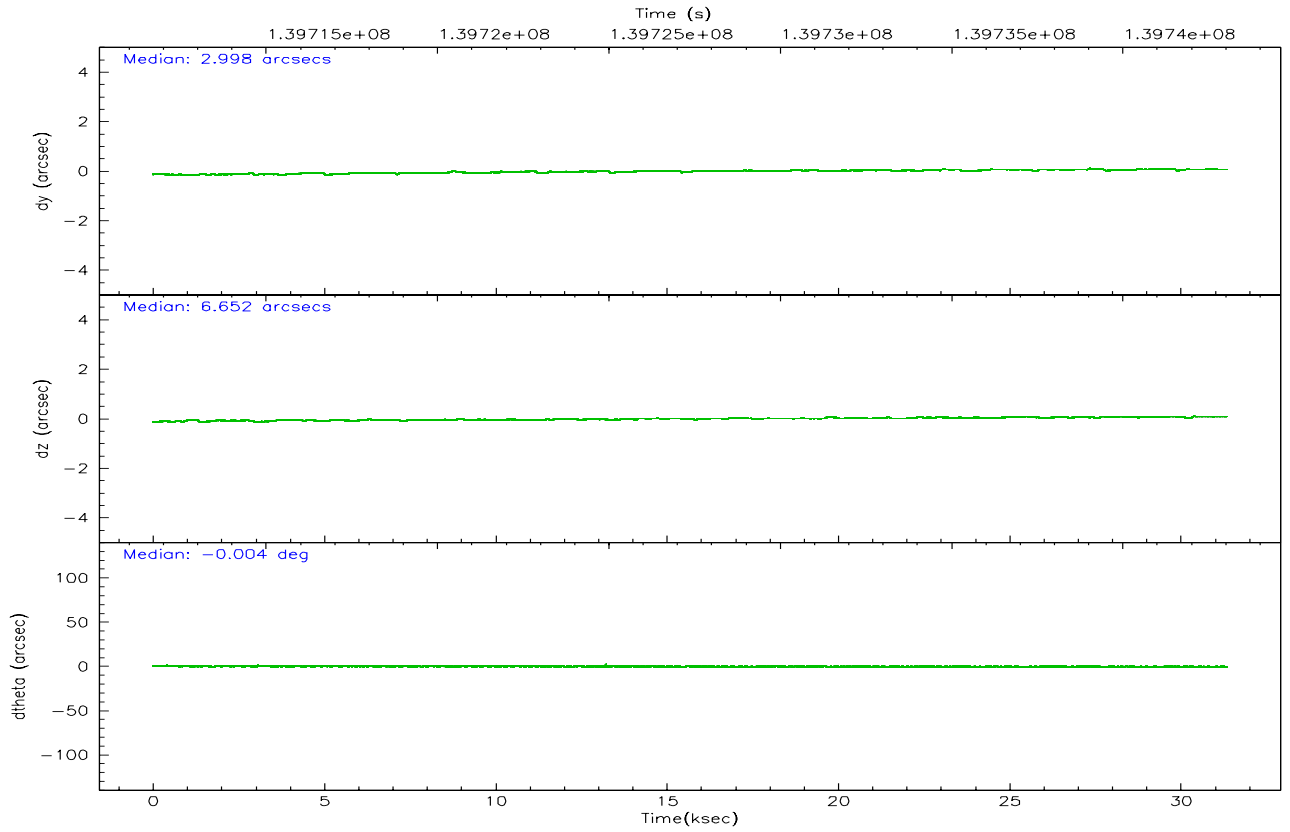
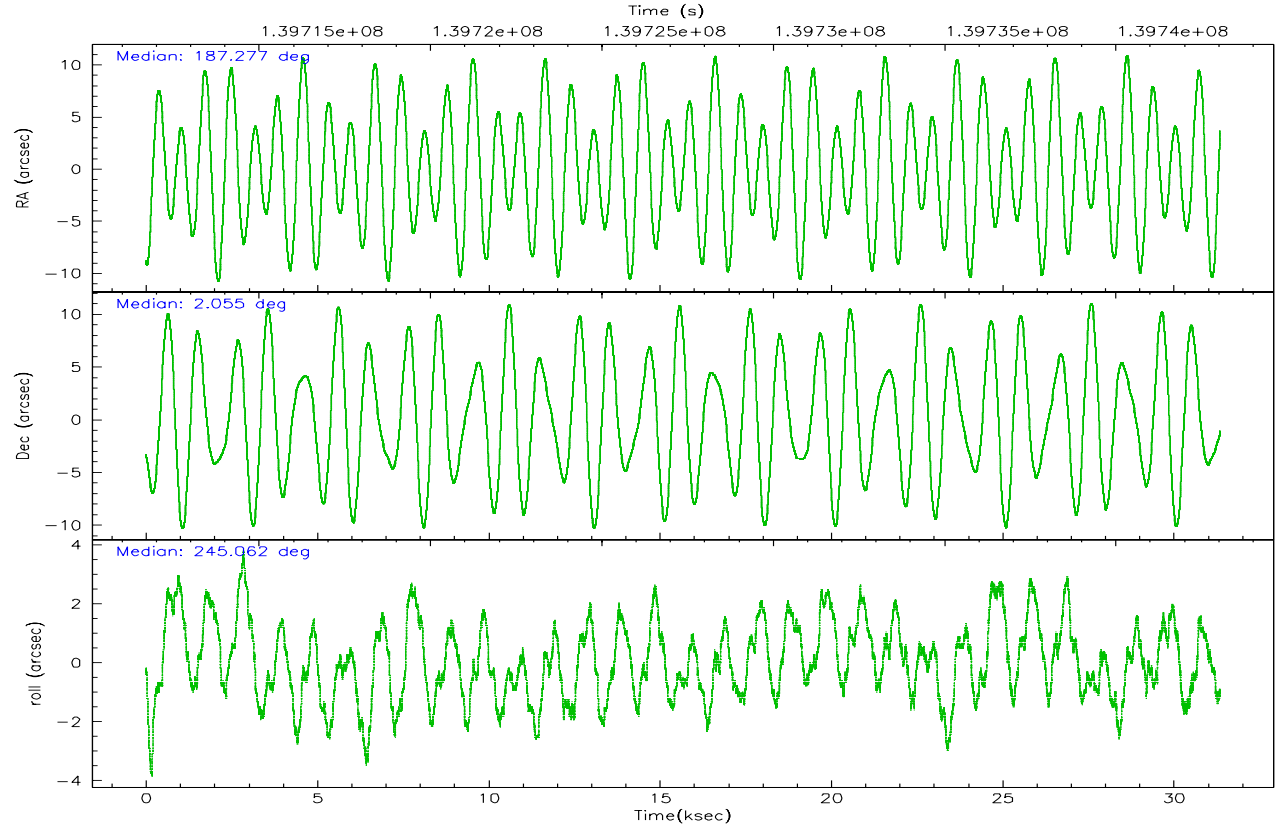
	ccd 4	ccd 5	ccd 6	ccd 7	ccd 8	ccd 9
grade 0 events	9219	27340	28721	11392	23348	14211
	5%	11%	15%	4%	11%	8%
grade 1 events	76	571	148	333	139	104
	0%	0%	0%	0%	0%	0%
grade 2 events	4594	32080	6711	27051	10059	3845
	2%	13%	3%	11%	4%	2%
grade 3 events	1846	3460	2860	7736	4519	1930
	1%	1%	1%	3%	2%	1%
grade 4 events	1794	3510	2803	7670	4141	1923
	1%	1%	1%	3%	1%	1%
grade 5 events	5271	11107	6392	15446	8117	6506
	3%	4%	3%	6%	3%	4%
grade 6 events	3325	54474	4229	55174	11192	3654
	1%	22%	2%	23%	5%	2%
grade 7 events	140335	108082	127928	109243	145610	127350
	84%	44%	71%	46%	70%	79%

2.2 Compared Parameters

Parameter	Planned	Actual	Parameter	Planned	Actual
Instrument	ACIS	ACIS	Obspar format version number	6	6
Detector	ACIS-456789	ACIS-456789	Obspar file type	PREDICTED	ACTUAL
Grating	HETG	HETG	Obspar update status	NONE	UPDATED
Data mode	FAINT	FAINT	Number of optional ACIS chips dropped	0	0
Observation mode	POINTING	POINTING	On-chip summing requested	N	N
Pointing RA	187.274261	187.2769963627118	Subarray requested	CUSTOM	CUSTOM
Pointing Dec	2.081523	2.05440511140812	Subarray start row	1	1
Pointing Roll	244.907347	245.0638754717111	Subarray row count	774	774
Window start time	139276864.184000	139276864.184000	Alternating exposures requested	N	N
Window stop time	141782464.184000	141782464.184000	Primary exposure time	0.000000	2.5
SIM focus pos (mm)	-0.684267	-0.6828225247311905			
SIM defocus (mm)	0	0.001444936568705701			
SIM translation stage pos (mm)	-187.132523	-187.1228876879999			
SIM translation stage offset (mm)	-3	-3.009634895007935			
Observation start time	139713041.184000	139711495.38315			
Observation start date	2002-06-06T01:09:37	2002-06-06T00:44:55			
Observation end time	139743041.184000	139743514.84696			
Observation end date	2002-06-06T09:29:37	2002-06-06T09:38:34			
Read mode	TIMED	TIMED			

2.3 Aspect



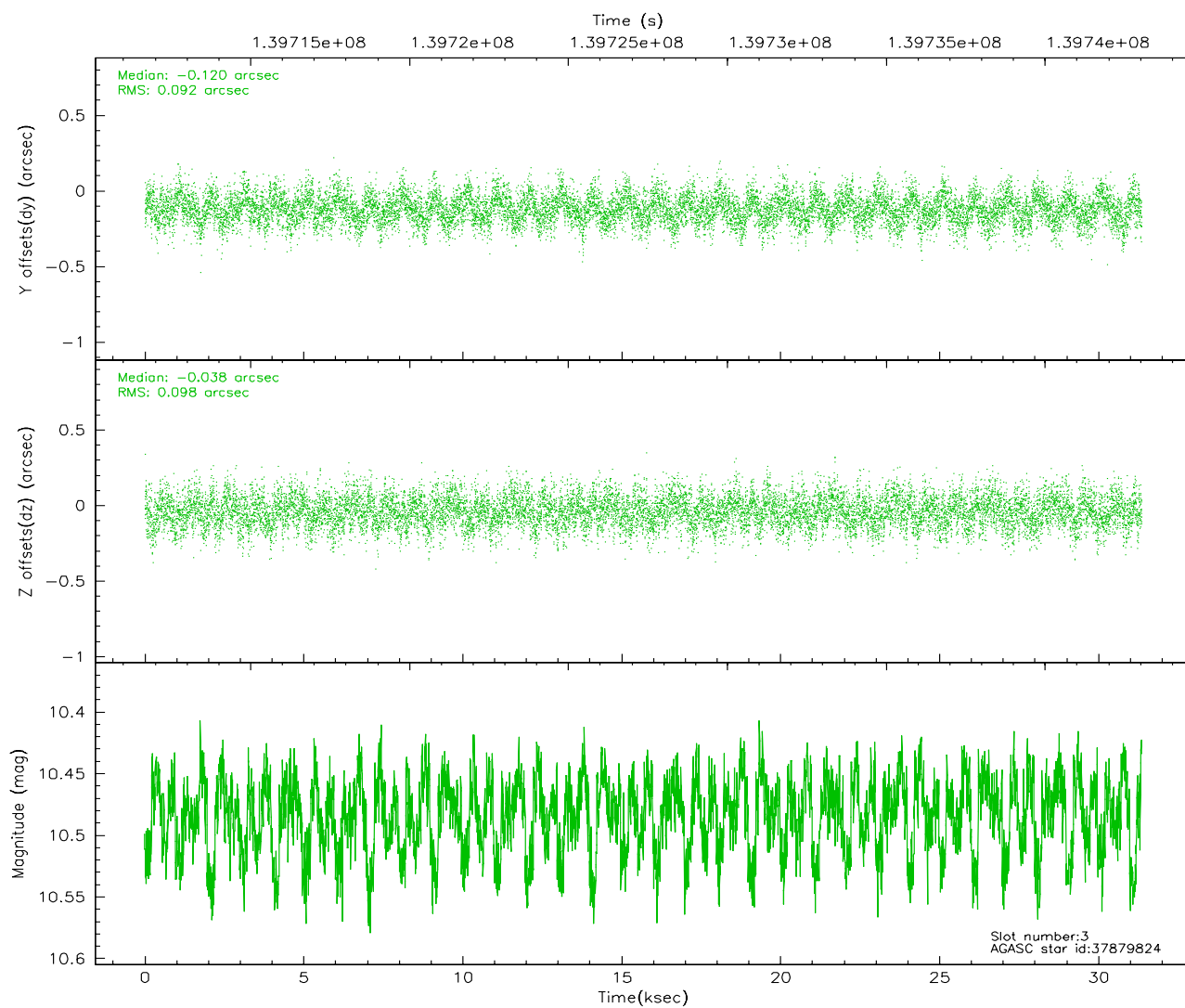
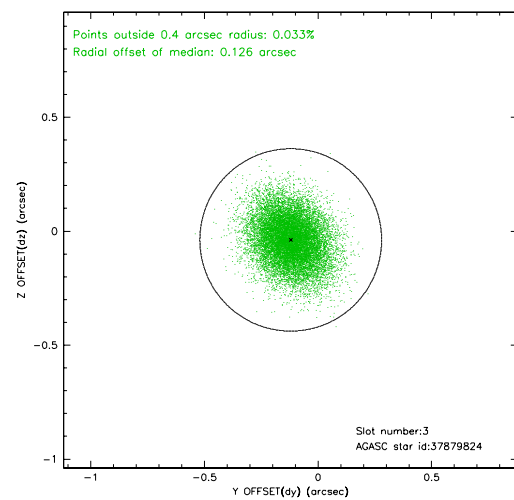
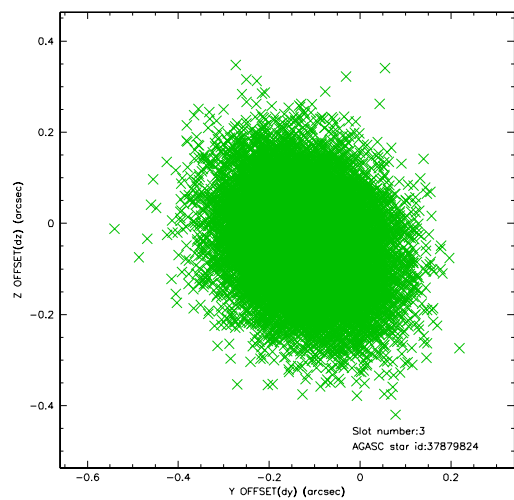


Slot Statistics

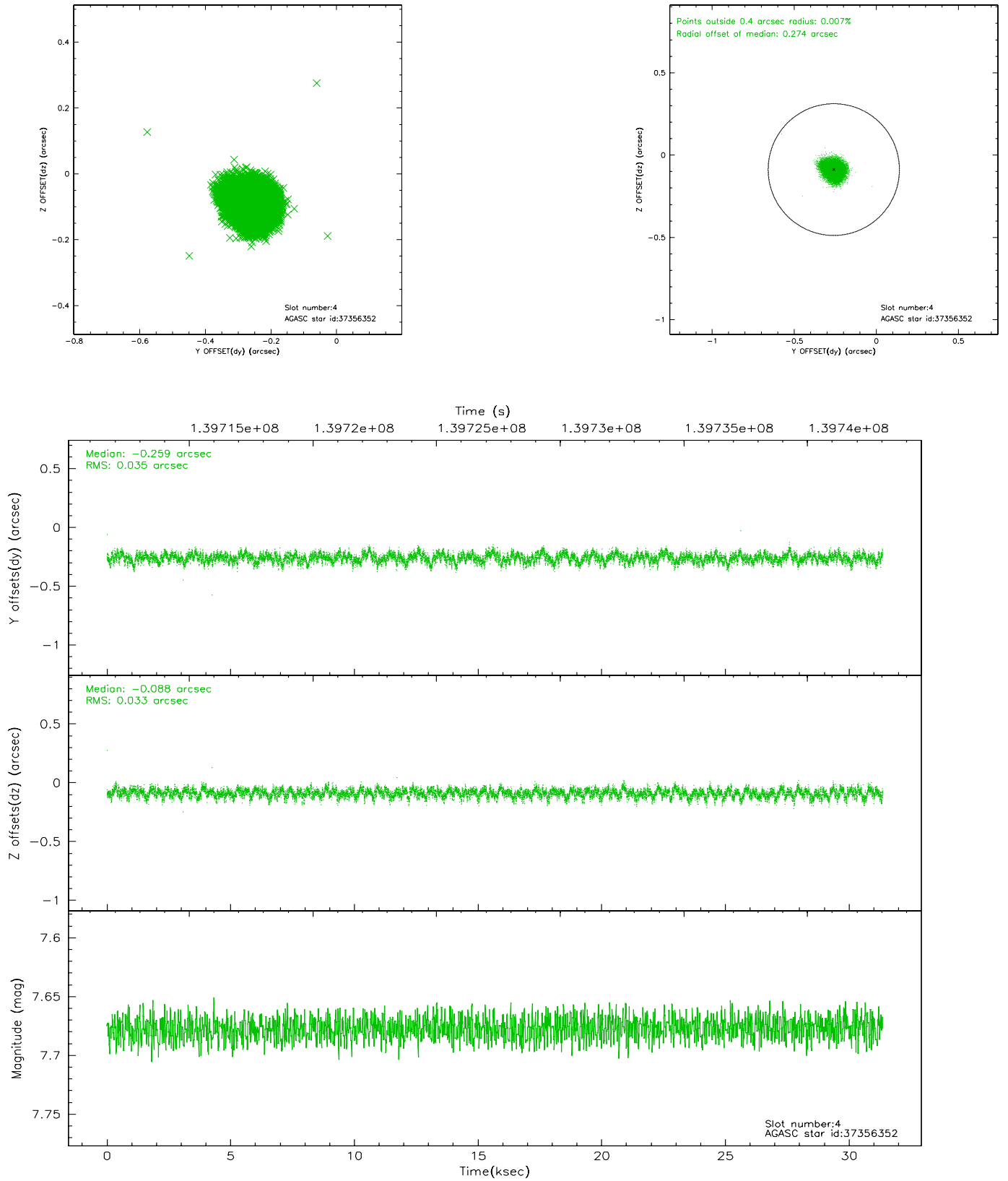
slot	status	id	mag	n_pts	med_dy	med_dz	dr1	dr2	ra	dec	mean_y	mean_z
0	FID	ACIS-S-2	7.10	7646	-0.025	-0.031	0.007	0.011	0.000000	0.000000	-755.43	-1789.98
1	FID	ACIS-S-4	7.19	7646	-0.036	0.020	0.007	0.012	0.000000	0.000000	2157.79	118.49
2	FID	ACIS-S-5	7.24	7647	0.030	0.019	0.007	0.011	0.000000	0.000000	-1808.15	112.21
3	GUIDE	37879824	10.48	15272	-0.120	-0.038	0.143	0.234	187.728661	2.497183	-2048.35	845.81
4	GUIDE	37356352	7.68	15290	-0.259	-0.088	0.052	0.082	187.433784	2.618460	-1993.98	-299.79
5	GUIDE	36965296	9.09	15283	0.059	-0.064	0.076	0.125	186.926292	1.837429	1326.89	-760.86
6	GUIDE	36965816	9.27	15281	0.016	-0.011	0.075	0.122	186.823353	1.771455	1699.19	-995.58
7	GUIDE	37883040	10.03	15287	0.309	0.202	0.117	0.192	187.575516	1.280402	2152.69	2205.80

2.4 Star Slots

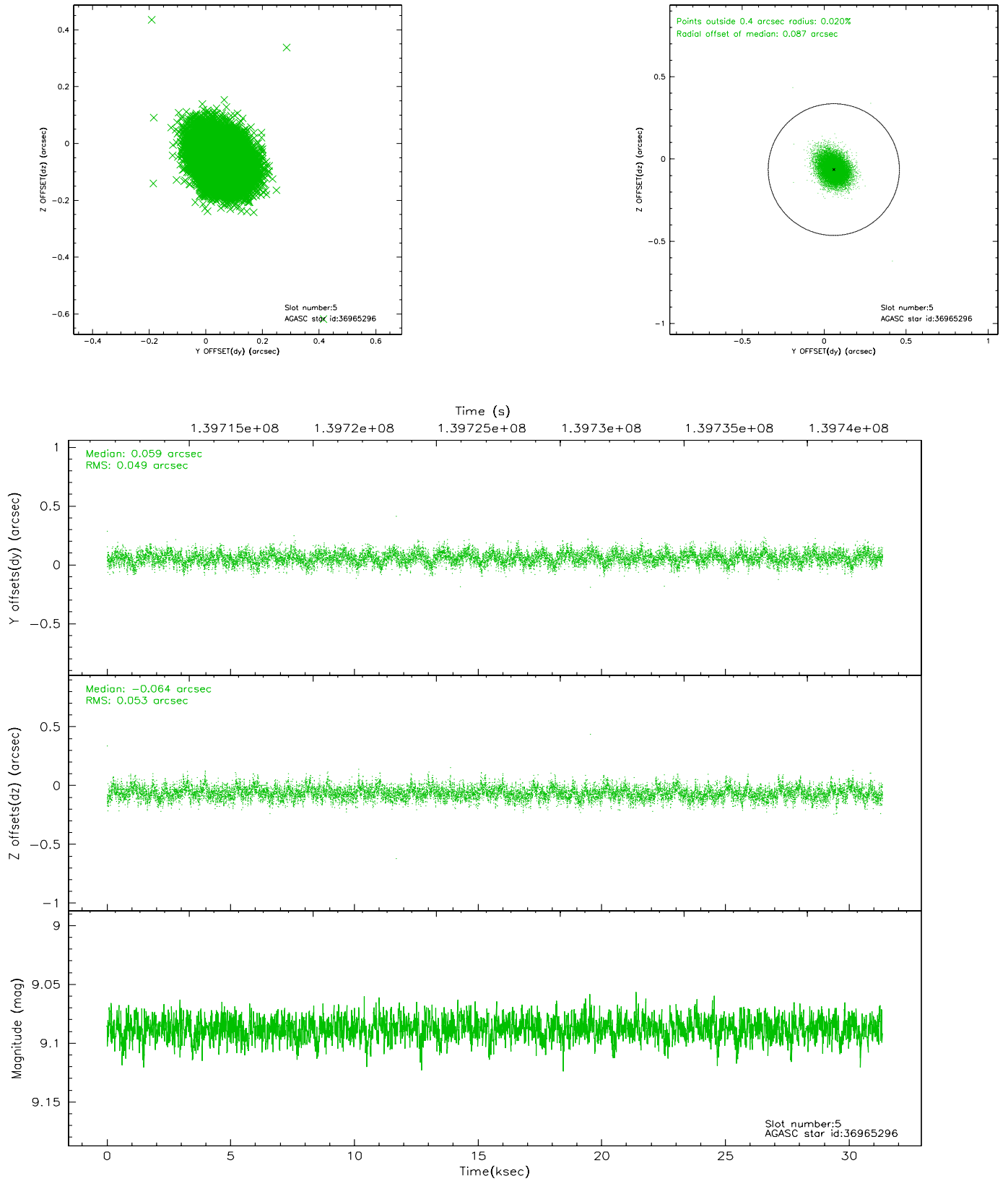
2.4.1 Slot 3



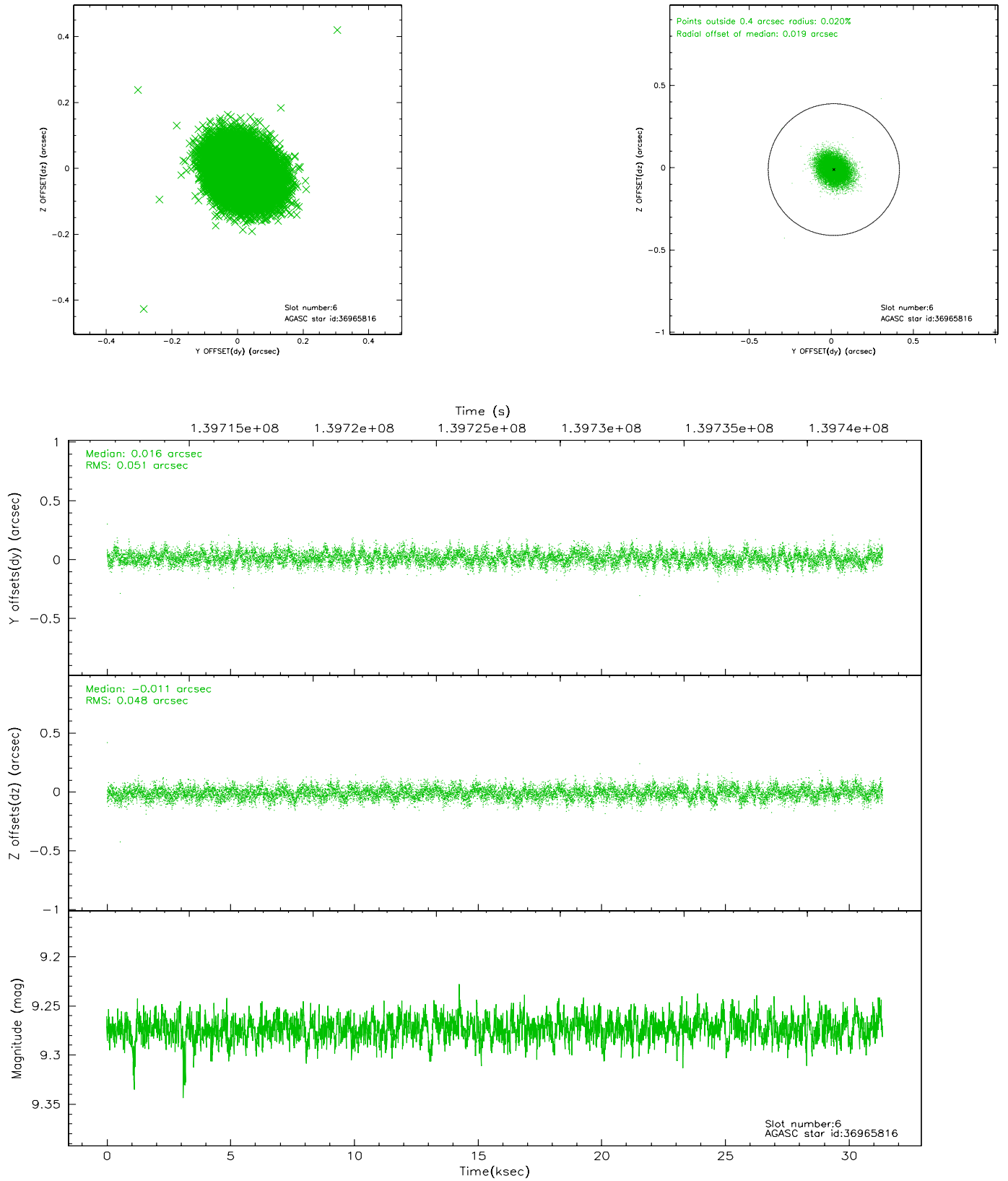
2.4.2 Slot 4



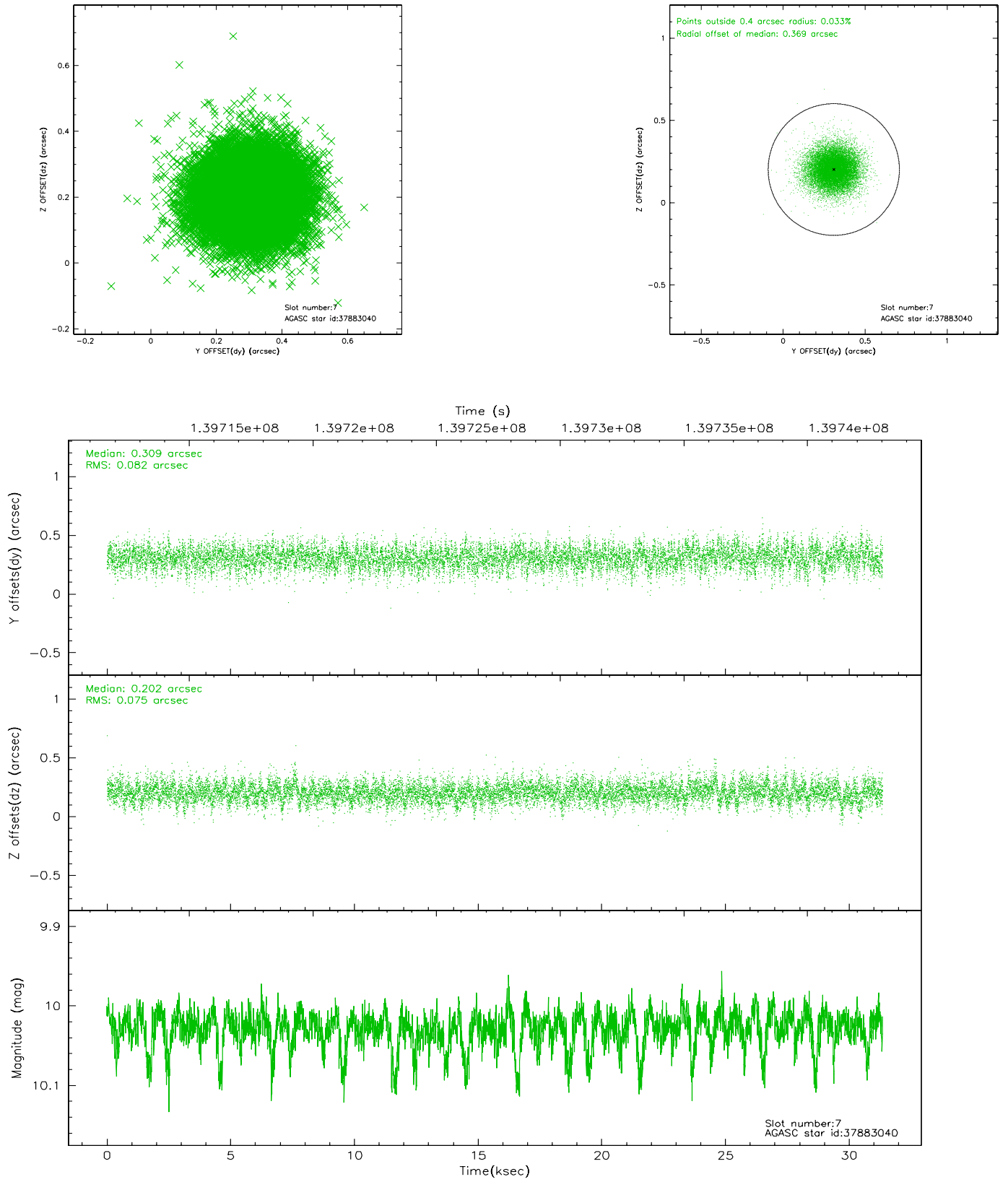
2.4.3 Slot 5



2.4.4 Slot 6

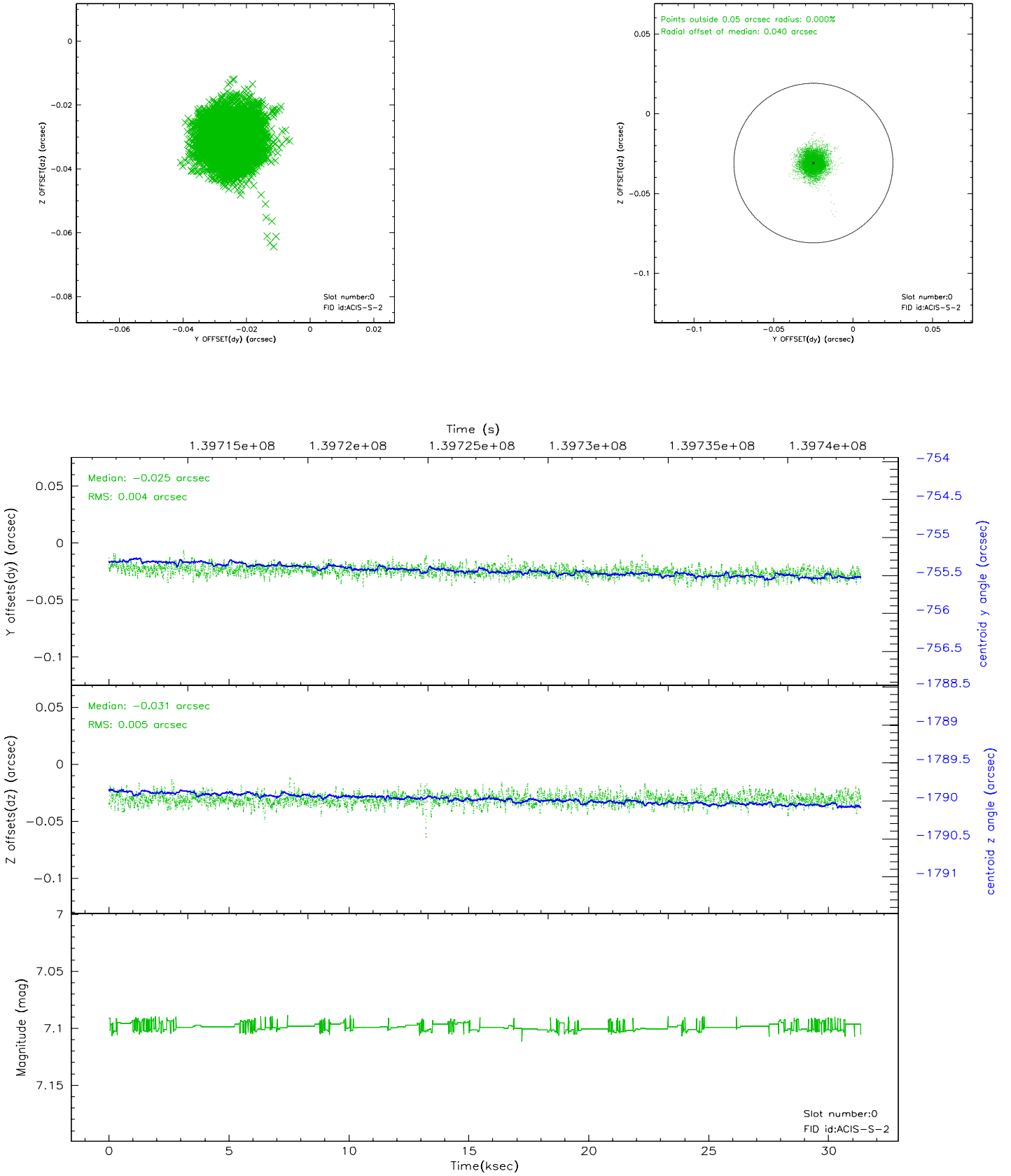


2.4.5 Slot 7

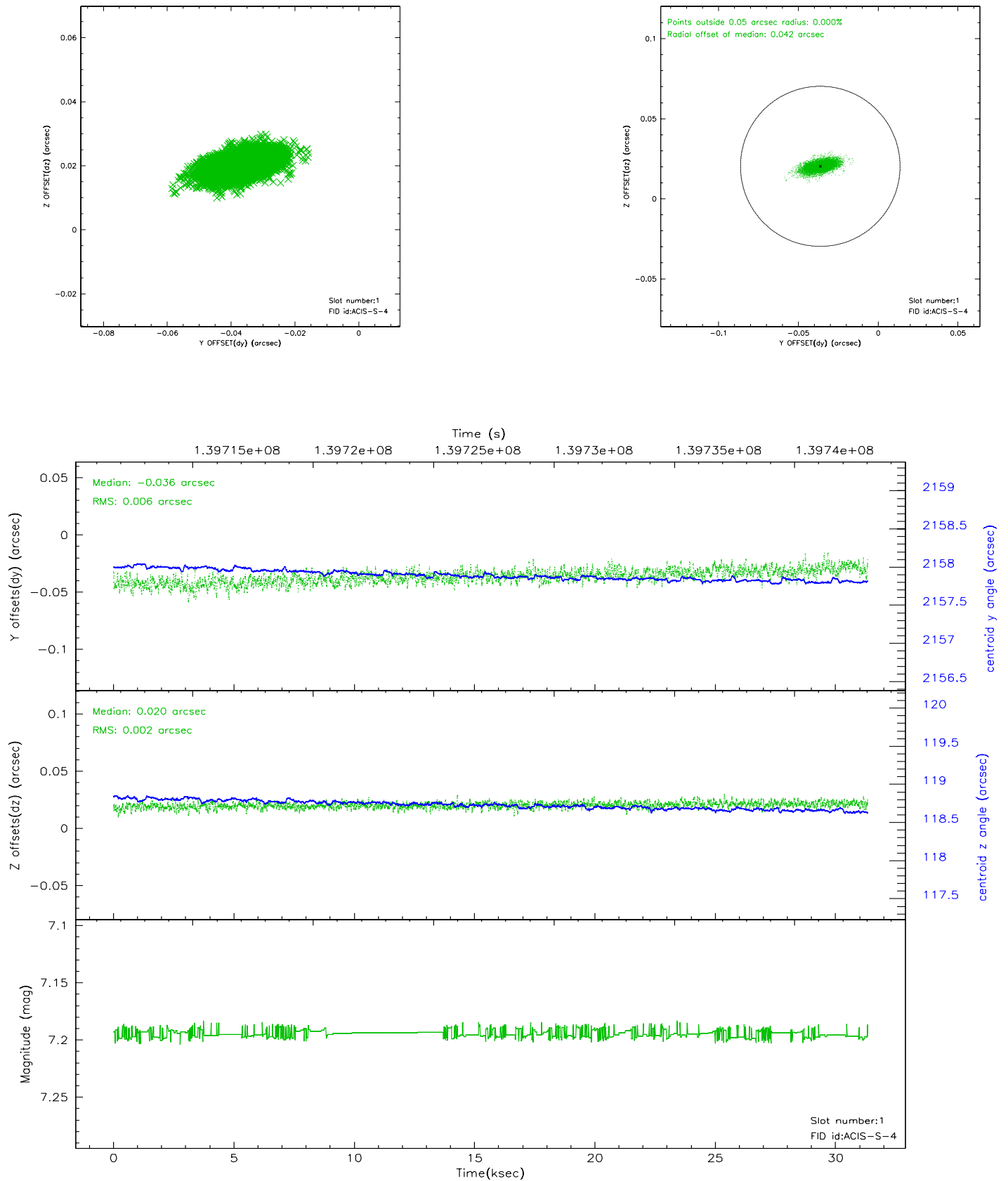


2.5 FID Slots

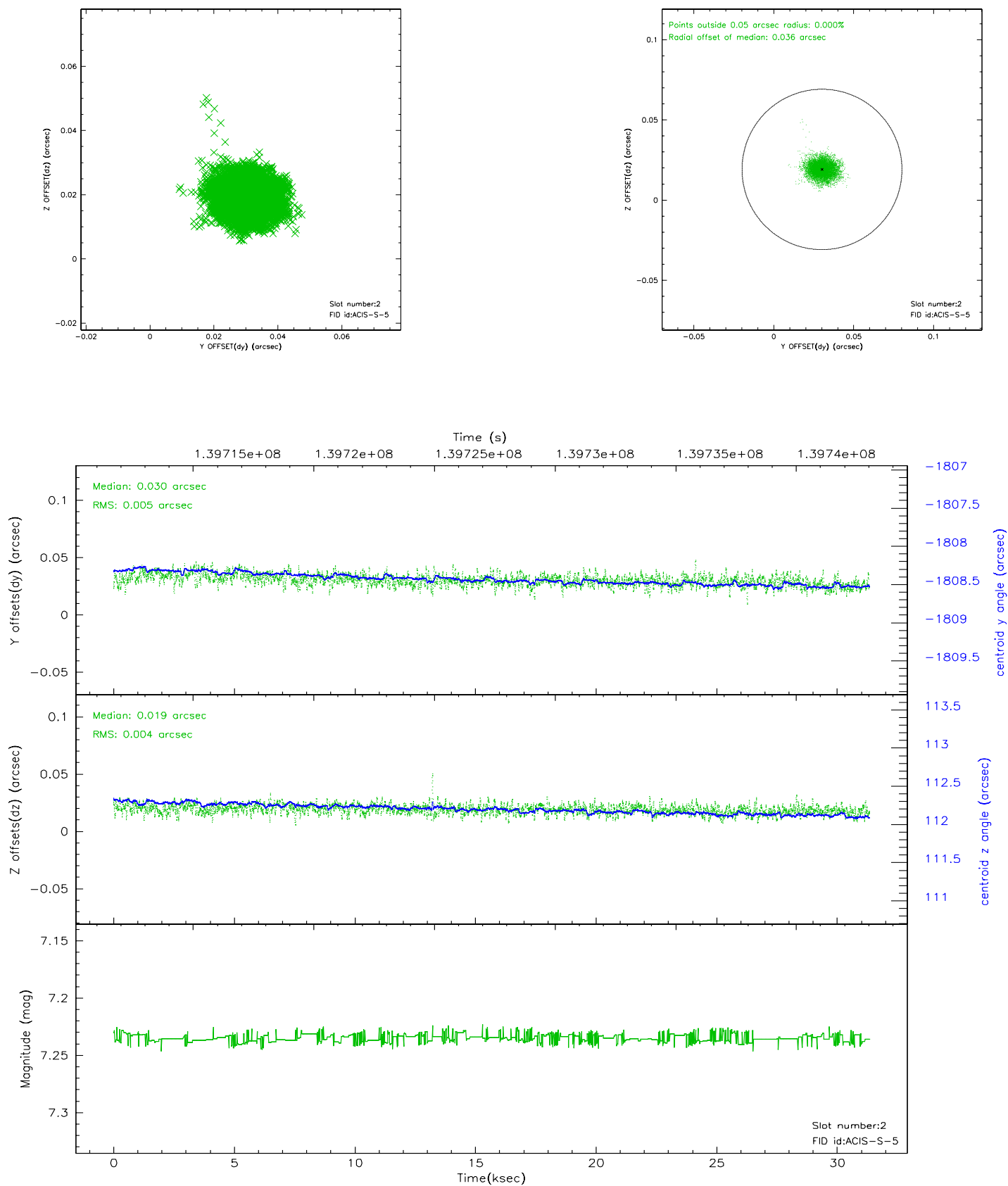
2.5.1 Slot 0



2.5.2 Slot 1

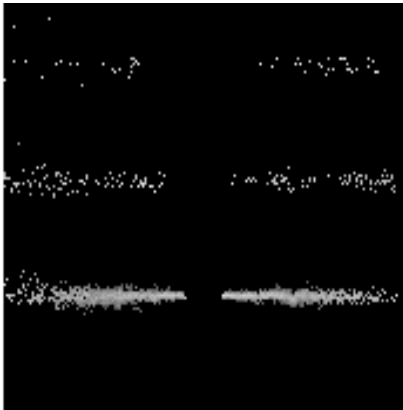


2.5.3 Slot 2

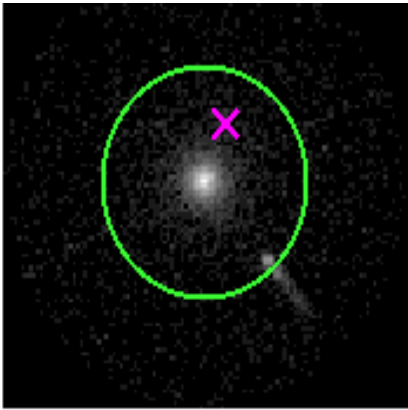


3 Gratings

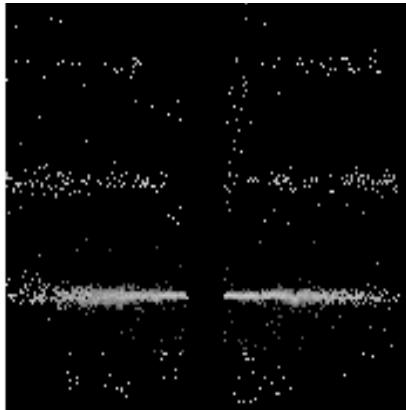
3.1 HEG Arm



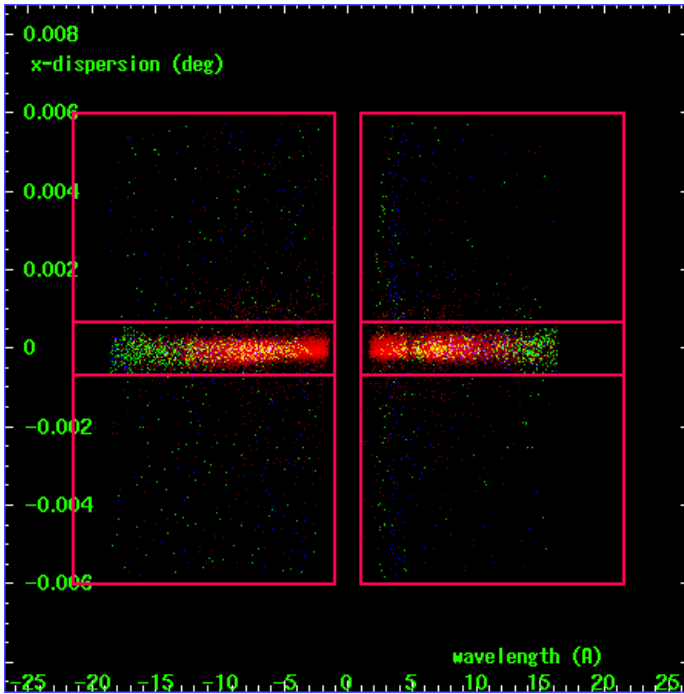
HEG Order Sort 123



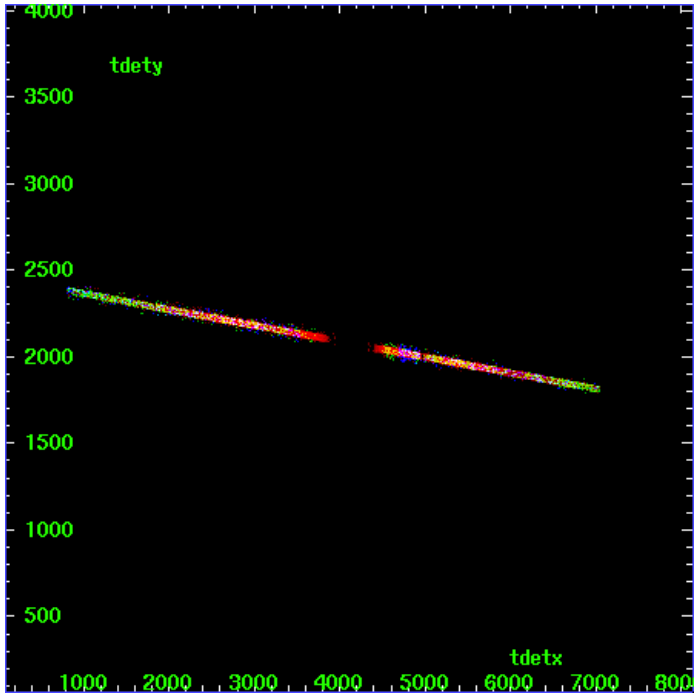
HEG Zero Order



HEG Order Sort ALL

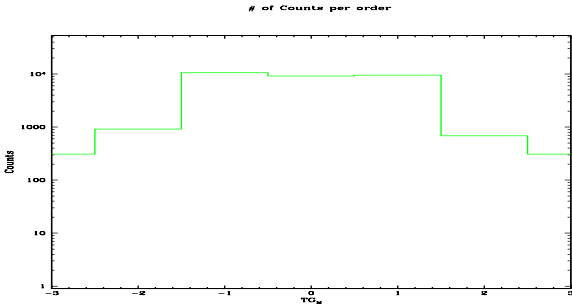


Spot Image HEG

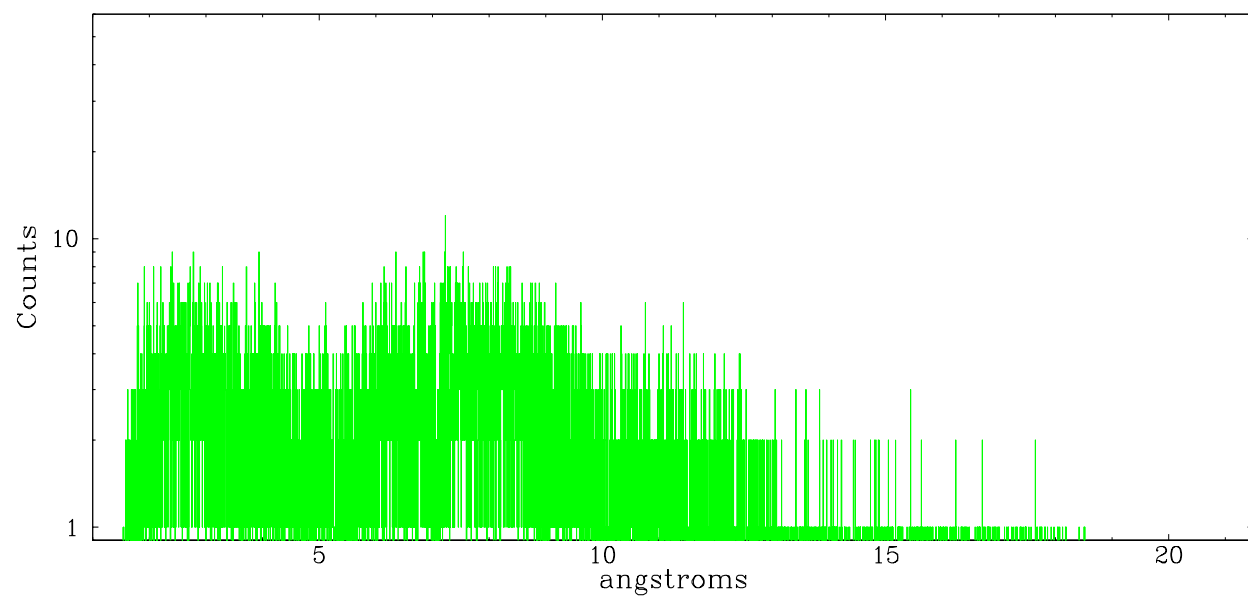


Full Detector HEG

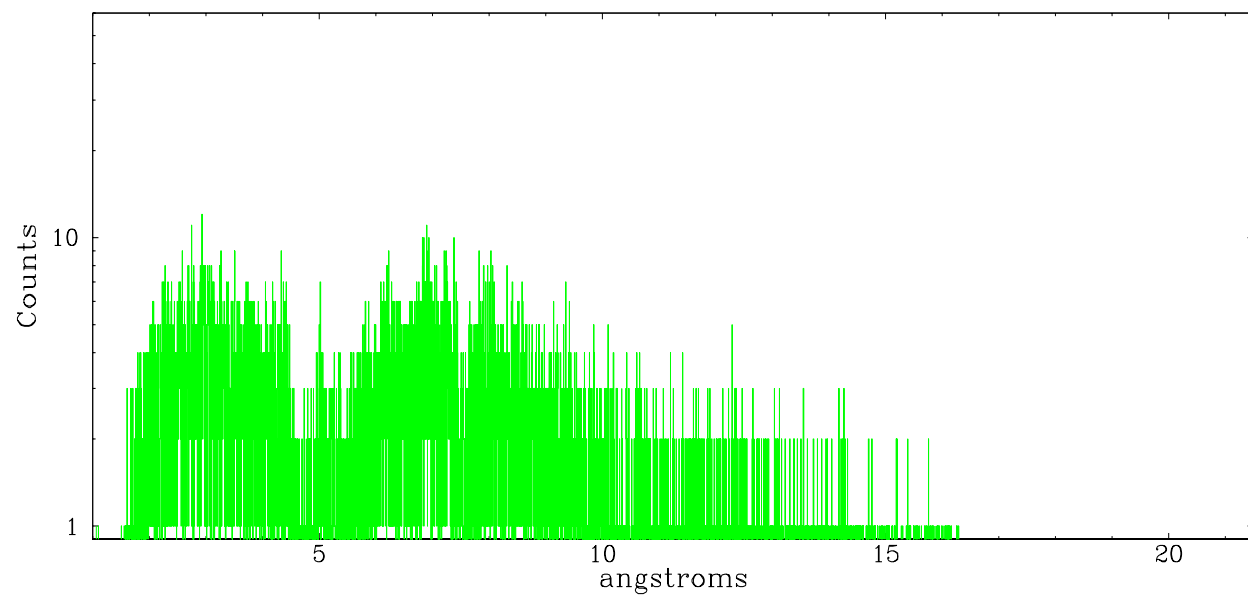
	order -3	order -2	order -1	order 0	order 1	order 2	order 3
Events	309	913	10567	9158	9504	683	310



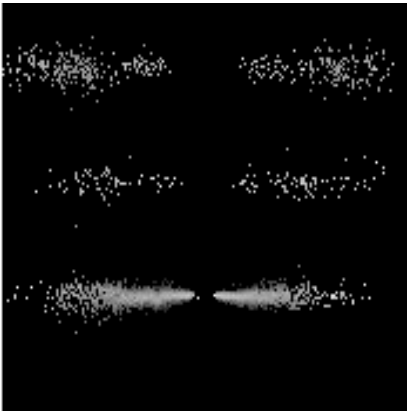
heg order -1



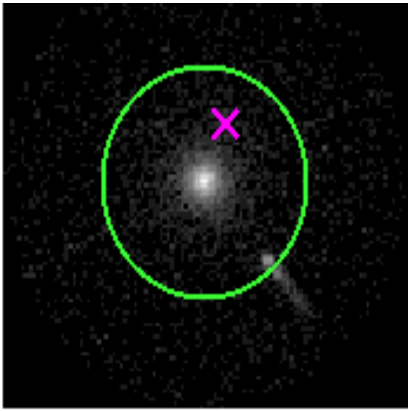
heg order +1



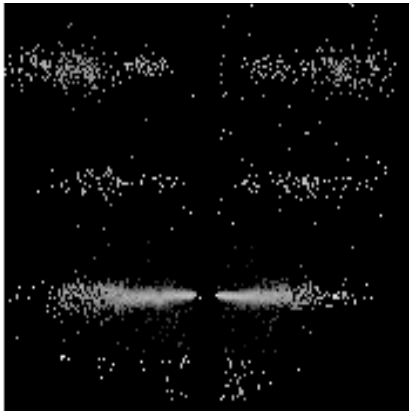
3.2 MEG Arm



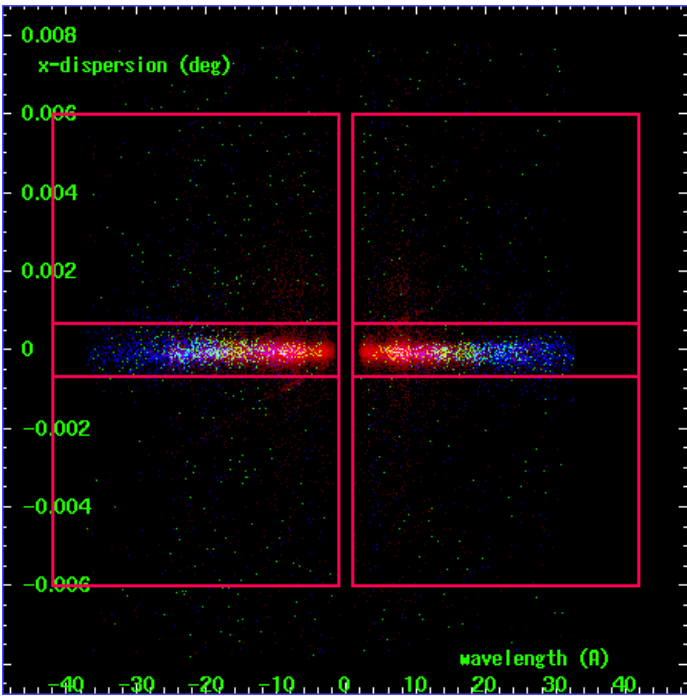
MEG Order Sort 123



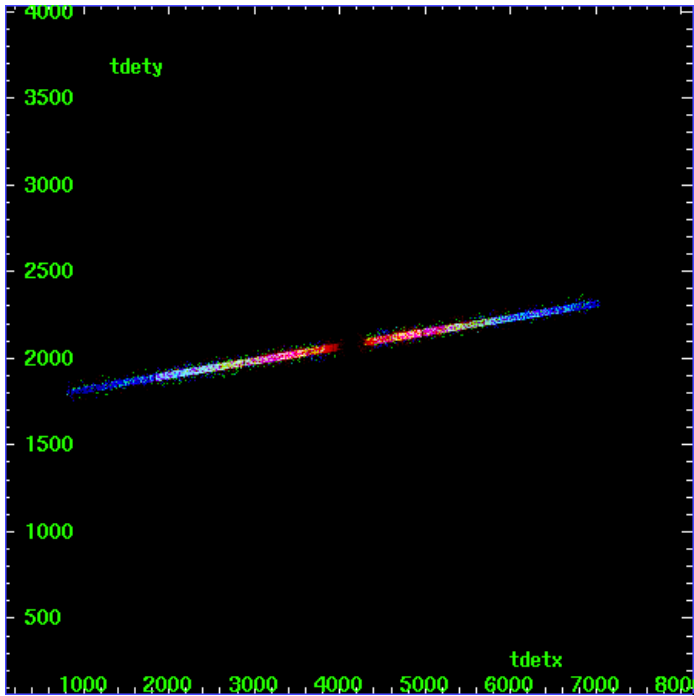
MEG Zero Order



MEG Order Sort ALL

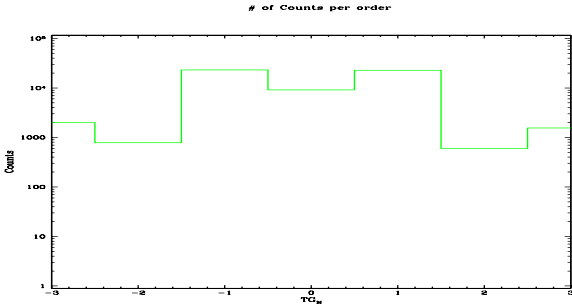


Spot Image MEG

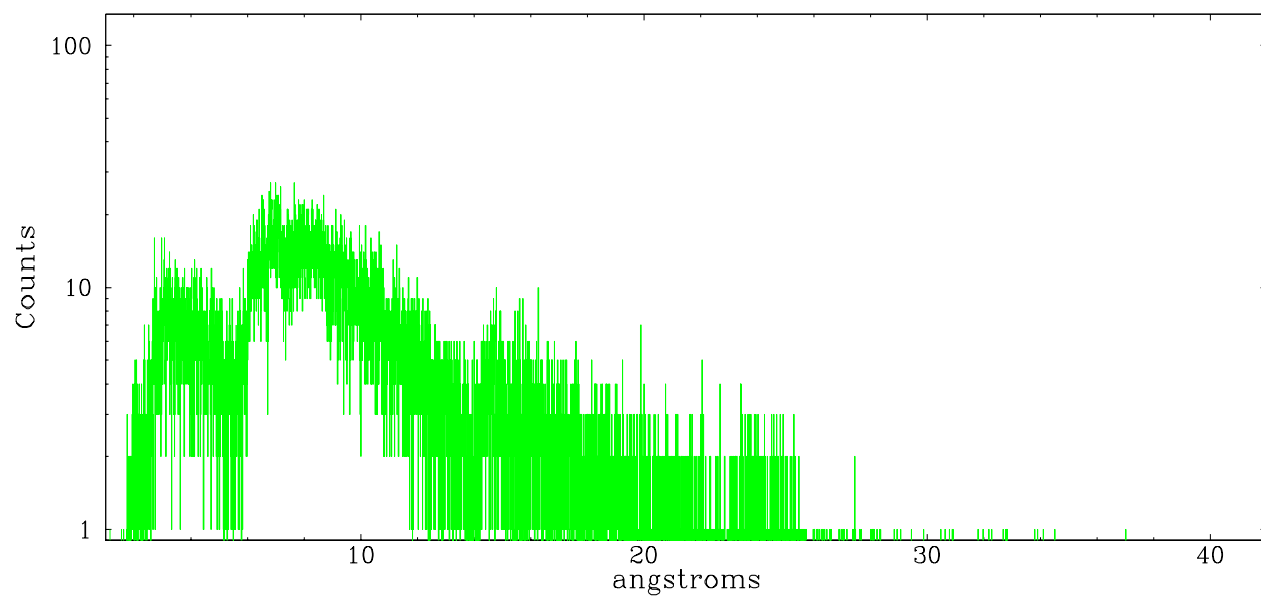


Full Detector MEG

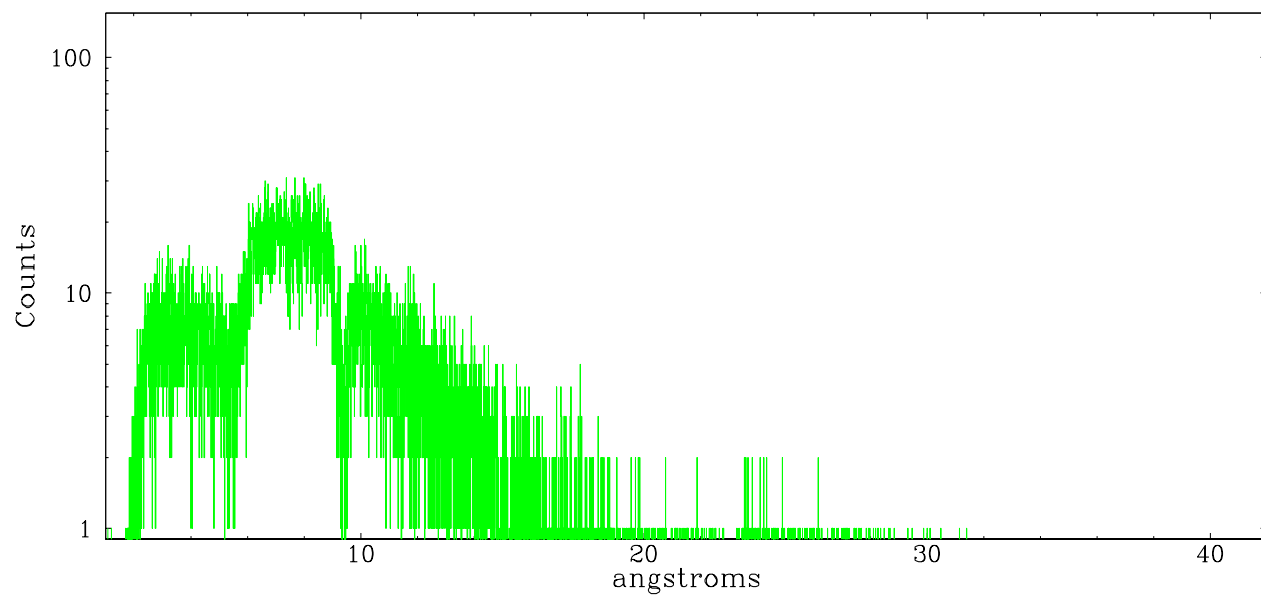
	order -3	order -2	order -1	order 0	order 1	order 2	order 3
Events	1993	783	23141	9158	22803	597	1560



meg order -1



meg order +1



A Summary

A.1 Status

V&V Scientist	Joy Nichols
V&V Date (YYYY-MM-DD)	2006.09.20
V&V Edition	1
V&V Disposition and Status	OK
V&V Charge Time	30.165

A.2 Comments