

# V&V Reference Report

## L2 ASCDS Version : 7.6.8.1

Observation 3695 - L2 Version 001  
Chandra X-Ray Center

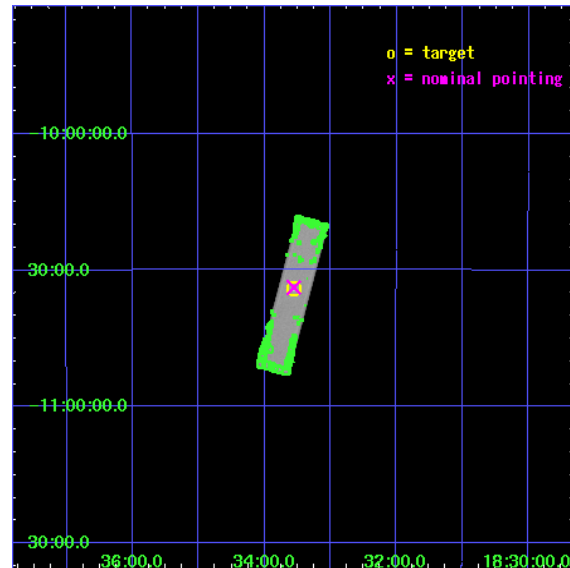
L2 Processing Date : Aug 11 2006

## Contents

<b>1</b>	<b>Front</b>	<b>2</b>
<b>2</b>	<b>OBI</b>	<b>3</b>
2.1	OBI . . . . .	3
2.1.1	Images . . . . .	3
2.1.2	Parameters . . . . .	4
2.1.3	Events . . . . .	4
2.2	Compared Parameters . . . . .	5
2.3	Aspect . . . . .	6
2.4	Star Slots . . . . .	9
2.4.1	Slot 3 . . . . .	9
2.4.2	Slot 4 . . . . .	10
2.4.3	Slot 5 . . . . .	11
2.4.4	Slot 6 . . . . .	12
2.4.5	Slot 7 . . . . .	13
2.5	FID Slots . . . . .	14
2.5.1	Slot 0 . . . . .	14
2.5.2	Slot 1 . . . . .	15
2.5.3	Slot 2 . . . . .	16
<b>3</b>	<b>Point Sources</b>	<b>17</b>
<b>A</b>	<b>Summary</b>	<b>18</b>
A.1	Status . . . . .	18
A.2	Comments . . . . .	18

# 1 Front

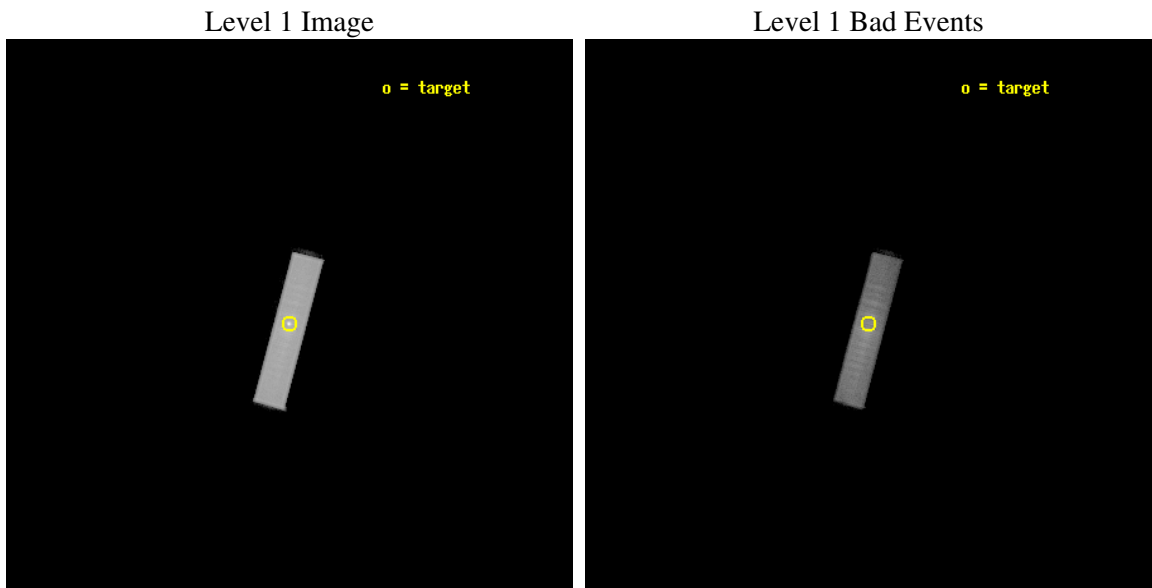
seq_num	590307
obs_id	3695
title	AO4A OBSERVATIONS OF THE STANDARD CANDLES CAS A AND G21.5-09
observer	Dr. CXC Calibration
object	G21.5-0.9
ra_targ	278.389583
dec_targ	-10.568528
ra_nom	278.38850432473
dec_nom	-10.564011910216
roll_nom	104.91977740643
revision	2
ontime	18966.857052267
livetime	18876.980188413
l2events	551535



## 2 OBI

### 2.1 OBI

#### 2.1.1 Images



### 2.1.2 Parameters

obi_num	1
ascdsver	7.6.8.1
caldbver	3.2.3
date	2006-08-11T18:51:59
revision	2

sched_exp_time	19000.000000
ontime	19052.700806022
l1events	787051

### 2.1.3 Events

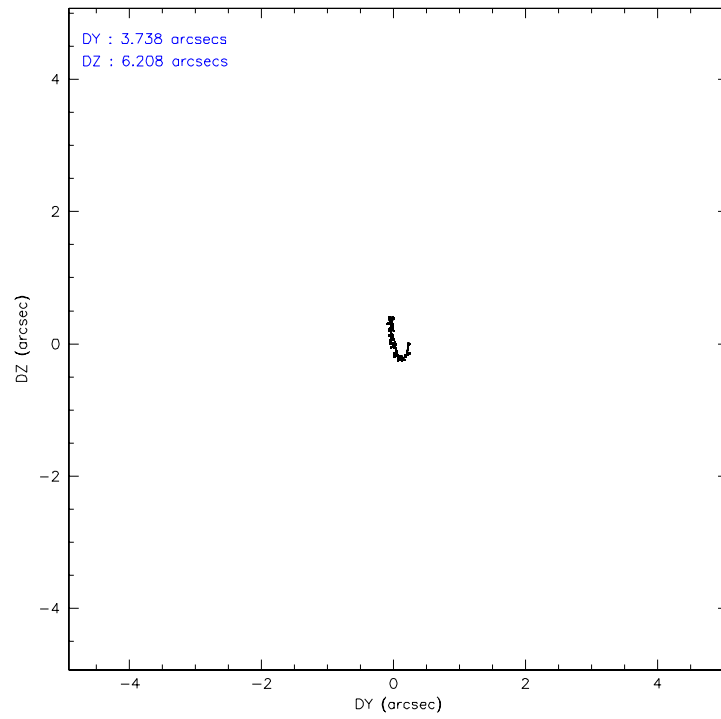
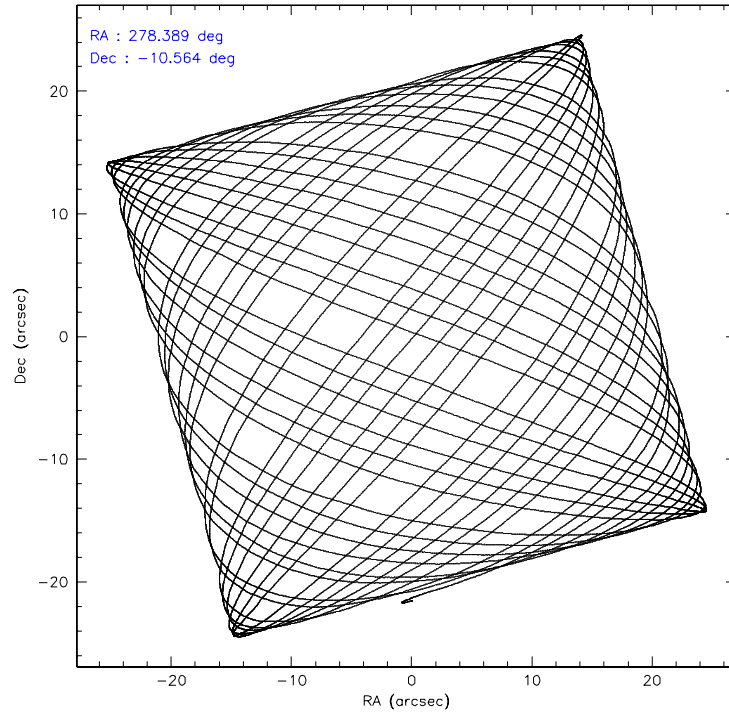
Level 1 Events

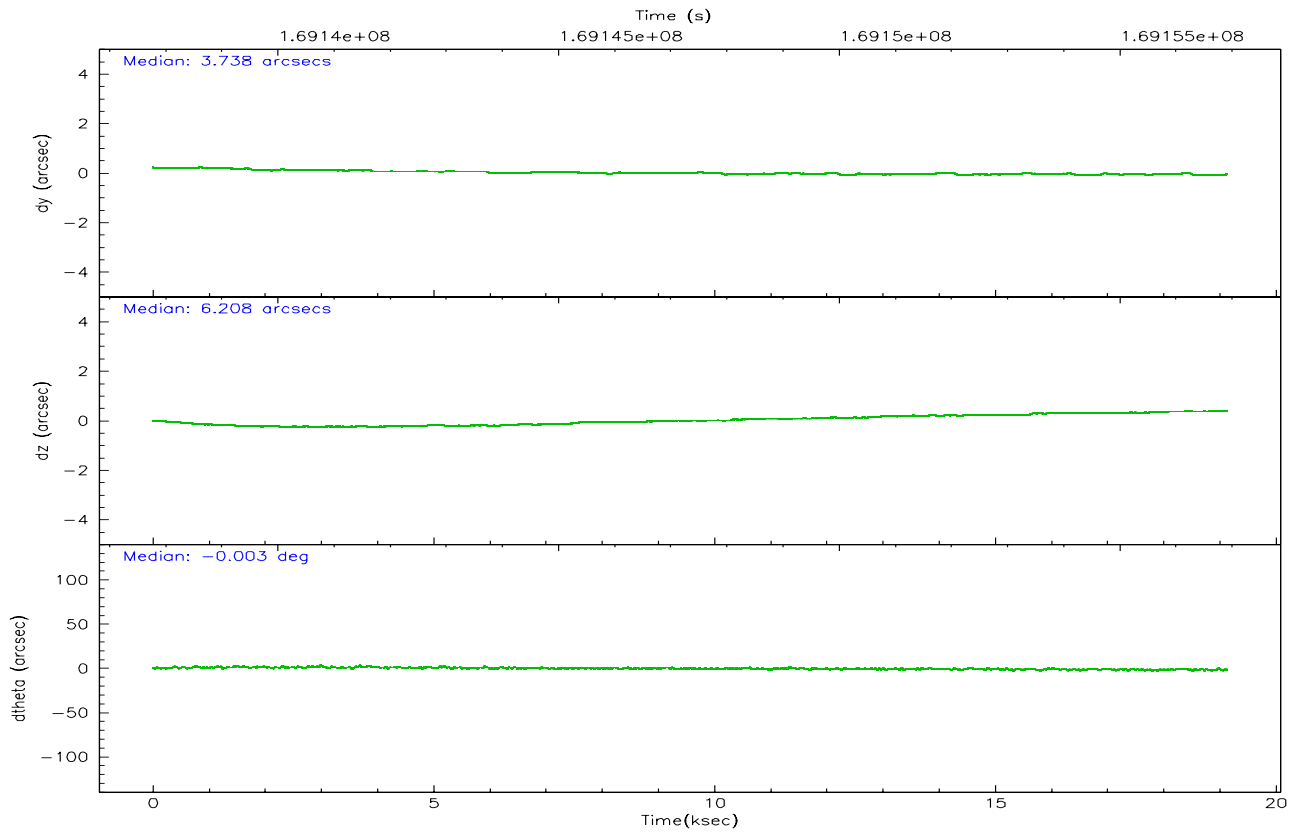
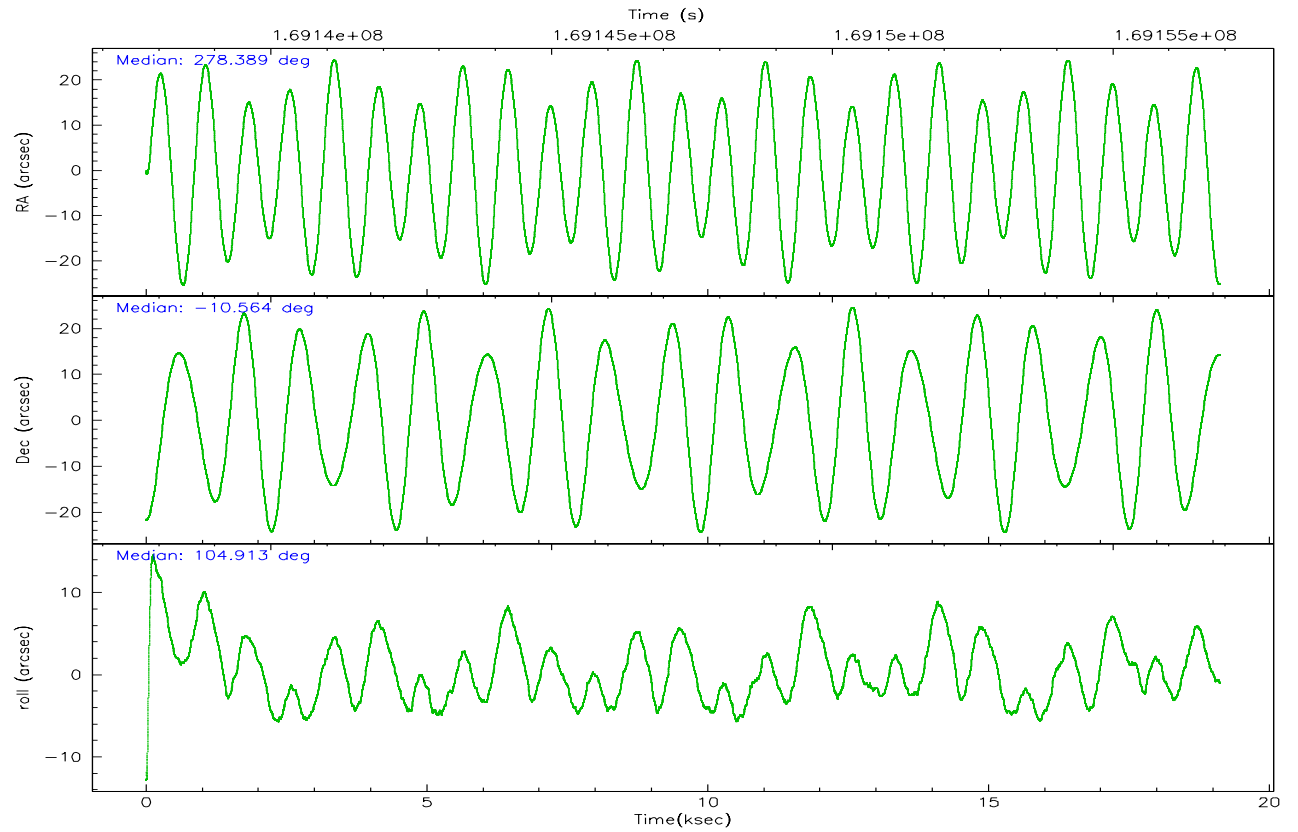
	<b>segment 1</b>	<b>segment 2</b>	<b>segment 3</b>
level 1 events	0	787051	0
rejected events	0	189244	0
rejected %	0%	24%	0%

## 2.2 Compared Parameters

Parameter	Planned	Actual	Parameter	Planned	Actual
Instrument	HRC	HRC	Obspar format version number	6	6
Detector	HRC-S	HRC-S	Obspar file type	PREDICTED	ACTUAL
Grating	NONE	NONE	Obspar update status	NONE	UPDATED
Data mode	OBSERVING	OBSERVING			
Observation mode	POINTING	POINTING			
Pointing RA	278.410036	278.3885043247296			
Pointing Dec	-10.583201	-10.56401191021598			
Pointing Roll	104.856408	104.9197774064253			
Window start time	168134464.184000	168134464.184000			
Window stop time	170640064.184000	170640064.184000			
SIM focus pos (mm)	-1.429586	-1.428180813131781			
SIM defocus (mm)	0.1037507710433287	0.1051558262725154			
SIM translation stage pos (mm)	250.455976	250.466033080201			
SIM translation stage offset (mm)	0	-0.01005468664627074			
Observation start time	169137905.184000	169137132.03325			
Observation start date	2003-05-12T14:44:01	2003-05-12T14:32:12			
Observation end time	169156905.184000	169157932.35913			
Observation end date	2003-05-12T20:00:41	2003-05-12T20:18:52			

## 2.3 Aspect





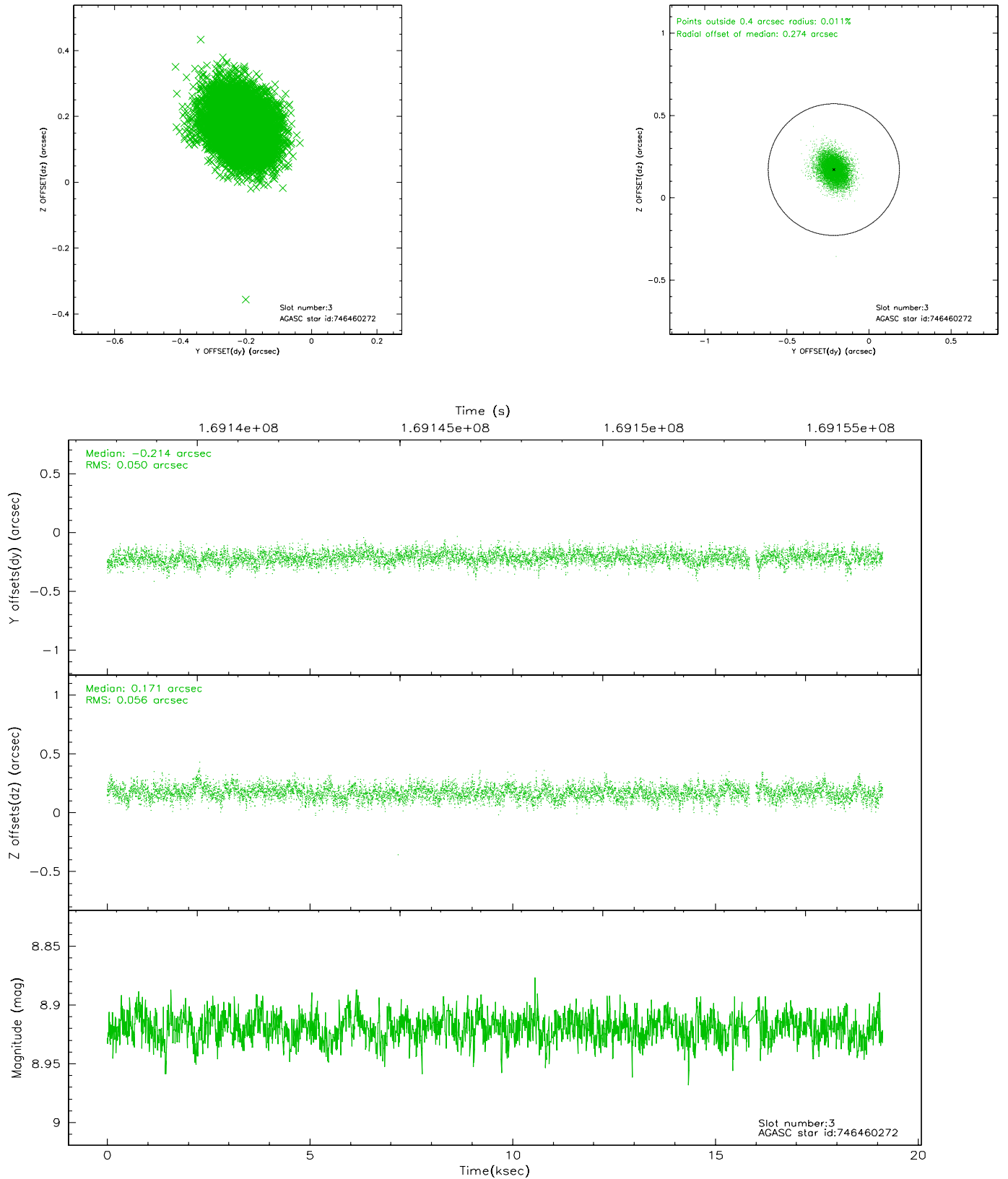
### Slot Statistics

slot	status	id	mag	n_pts	med_dy	med_dz	dr1	dr2	ra	dec	mean_y	mean_z
0	FID	HRC-S-1	7.02	4663	0.148	-0.166	0.015	0.023	0.000000	0.000000	-1157.82	-454.80
1	FID	HRC-S-2	7.02	4662	0.109	-0.098	0.009	0.021	0.000000	0.000000	1241.57	-447.49
2	FID	HRC-S-3	7.03	4661	0.135	-0.038	0.014	0.023	0.000000	0.000000	-1160.28	574.76
3	GUIDE	746460272	8.92	9243	-0.214	0.171	0.079	0.130	278.847488	-10.152127	1101.99	-1895.27
4	GUIDE	746460328	9.81	9310	-0.187	0.069	0.146	0.237	278.603974	-9.898096	2207.53	-1296.58
5	GUIDE	746462392	8.54	9326	0.083	0.083	0.080	0.128	279.038421	-10.890715	-1641.73	-1862.97
6	GUIDE	746462456	8.40	9325	0.097	-0.050	0.068	0.108	278.652171	-10.530173	-35.67	-877.11
7	GUIDE	746995400	9.49	9321	0.216	-0.271	0.112	0.180	278.078957	-11.289885	-2159.69	1782.01

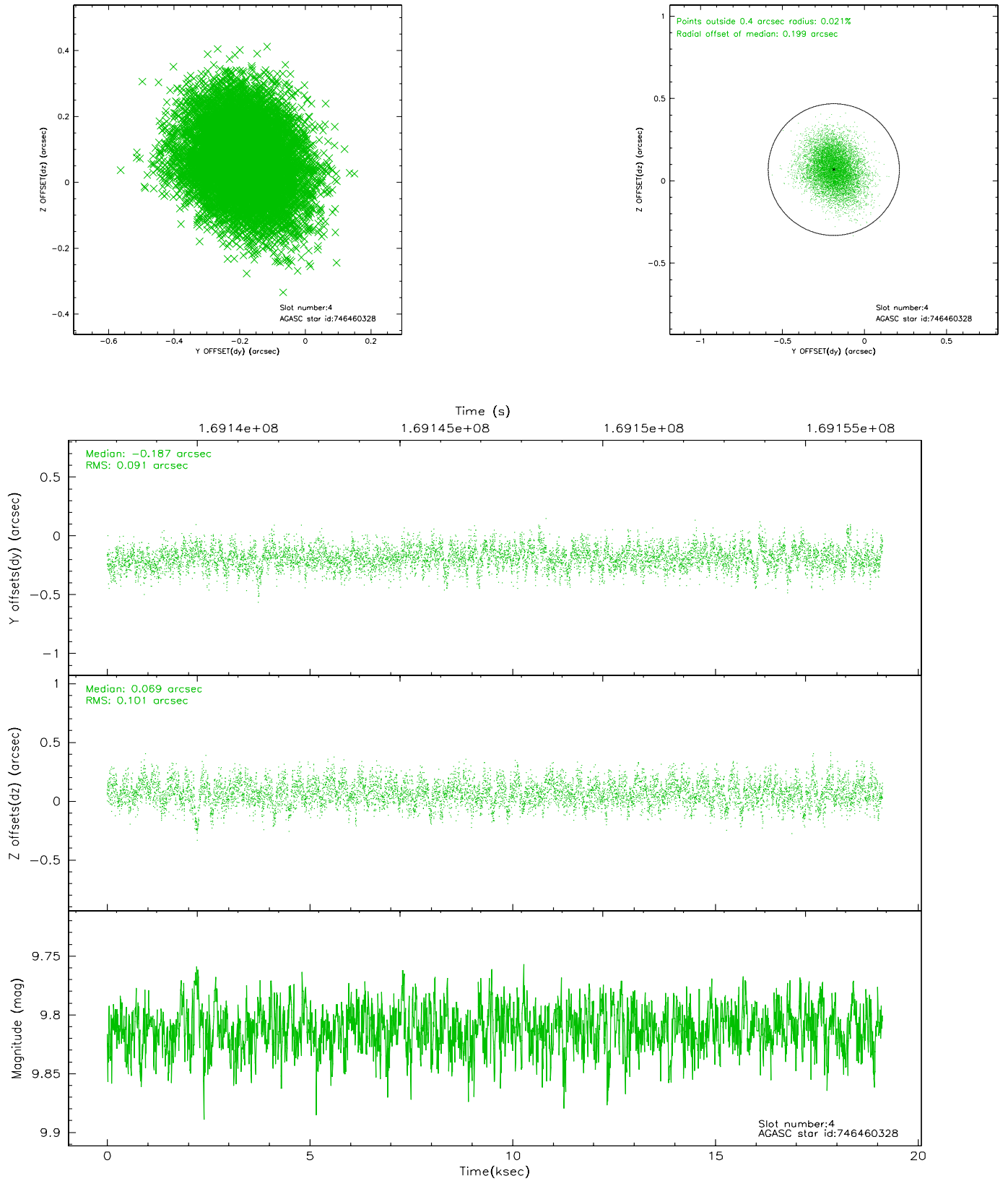


## 2.4 Star Slots

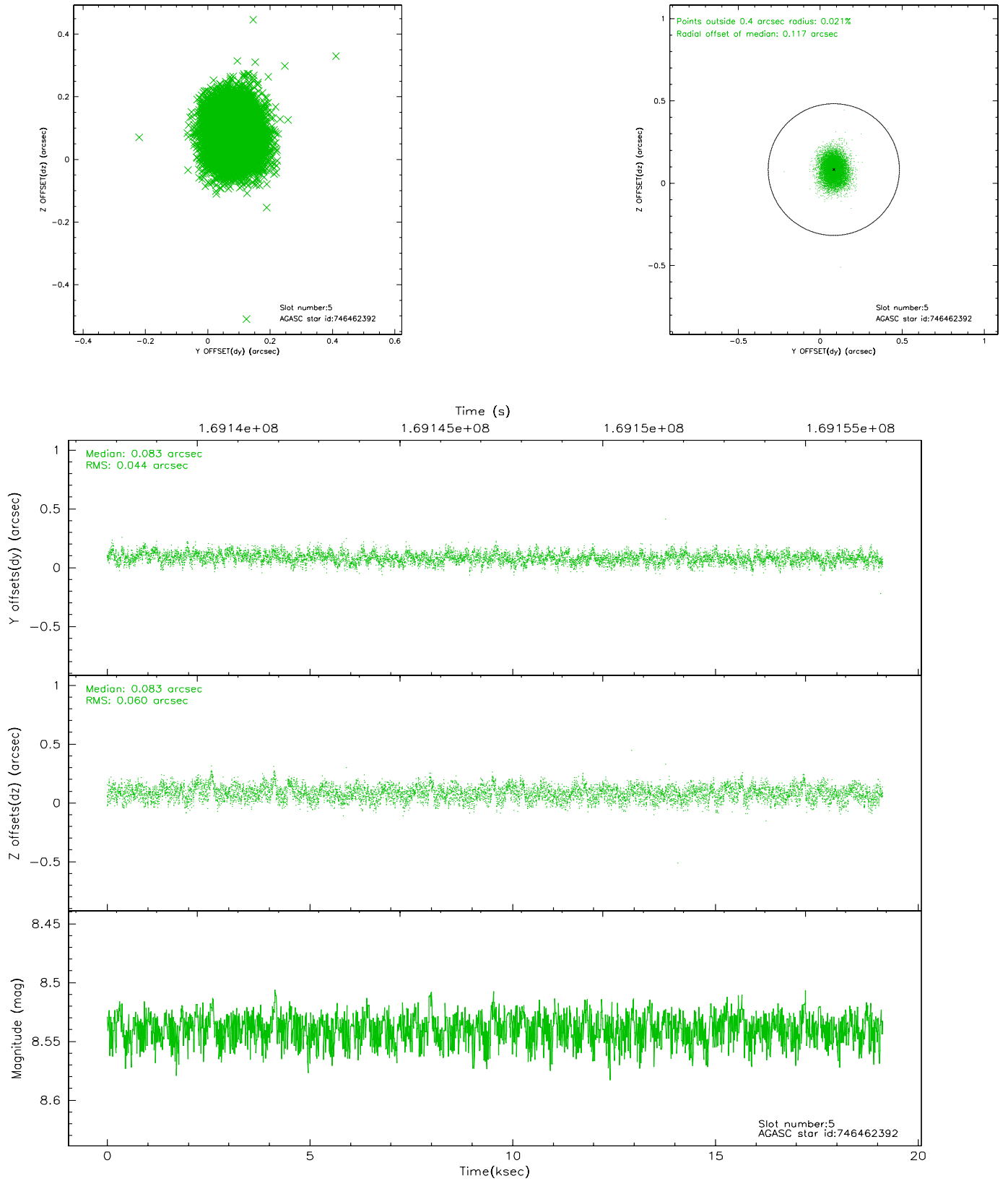
### 2.4.1 Slot 3



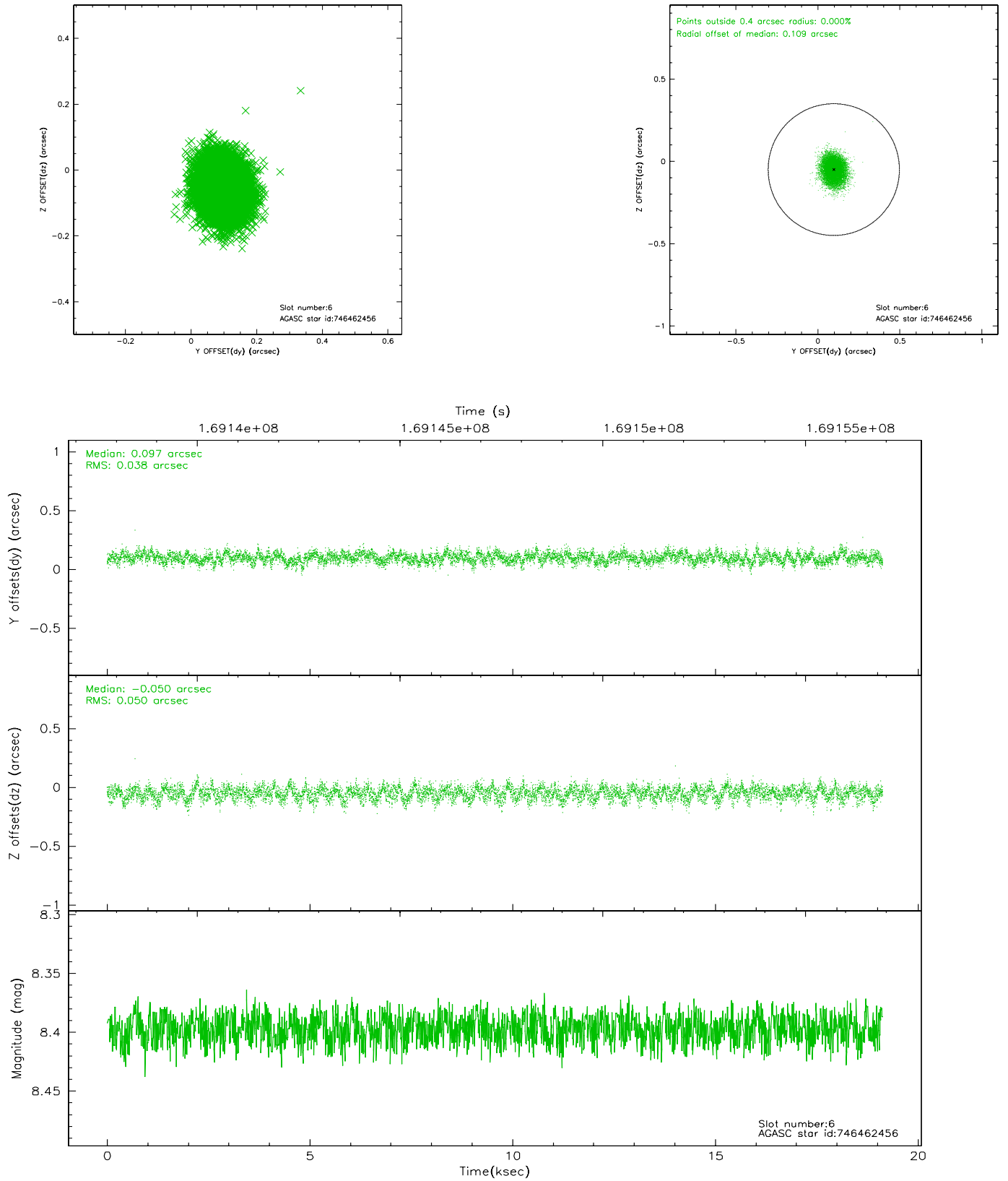
## 2.4.2 Slot 4



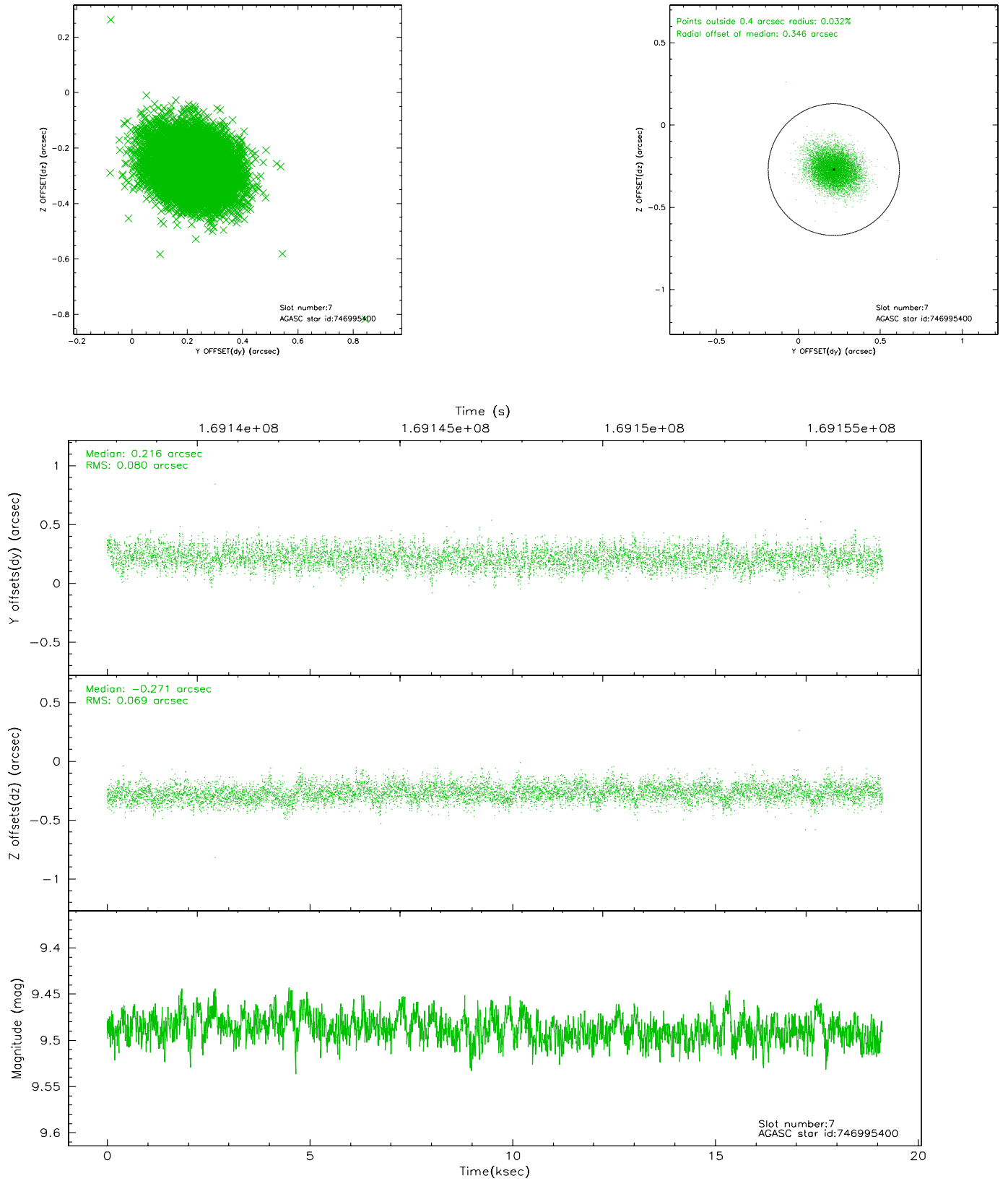
### 2.4.3 Slot 5



## 2.4.4 Slot 6

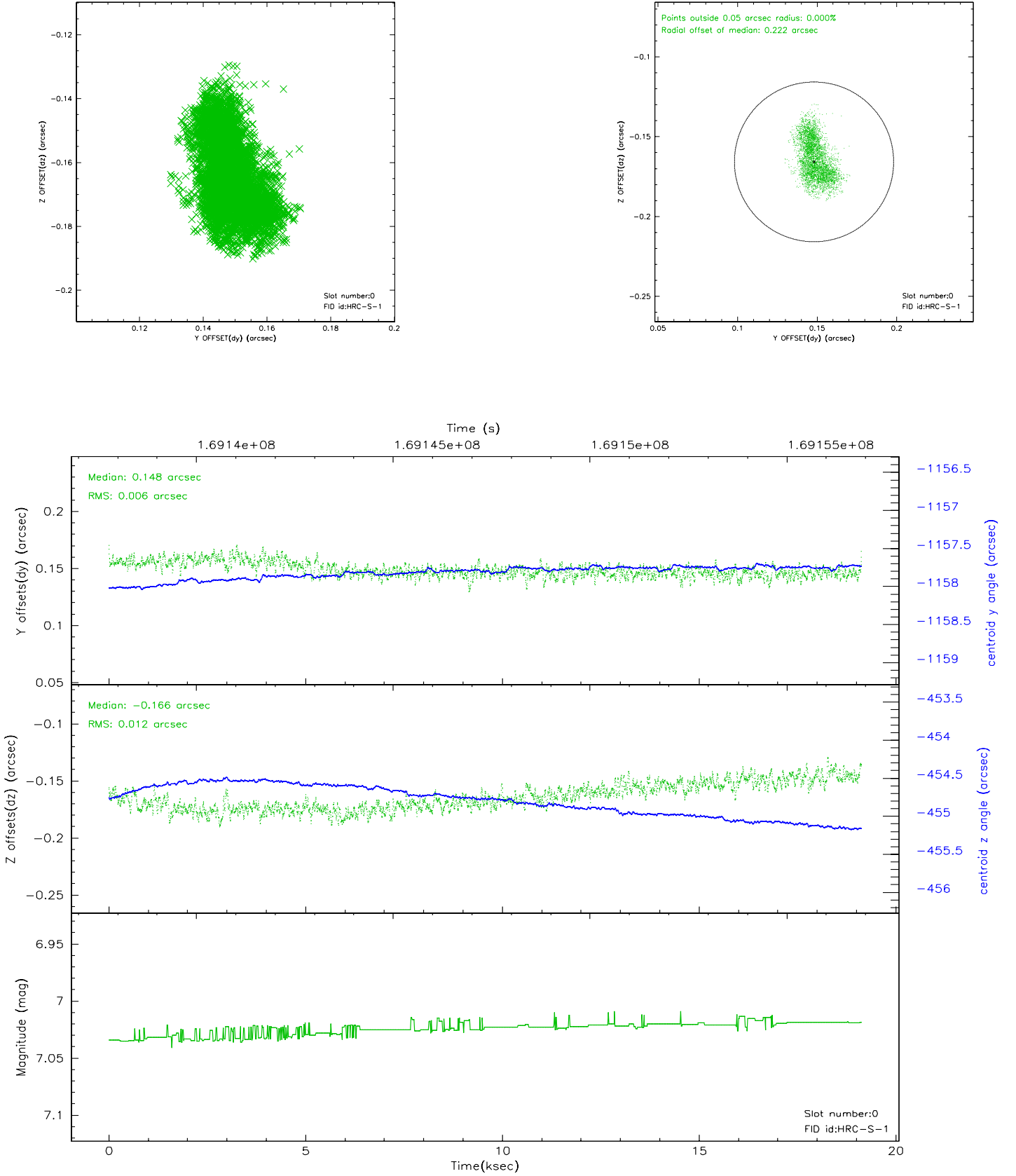


## 2.4.5 Slot 7

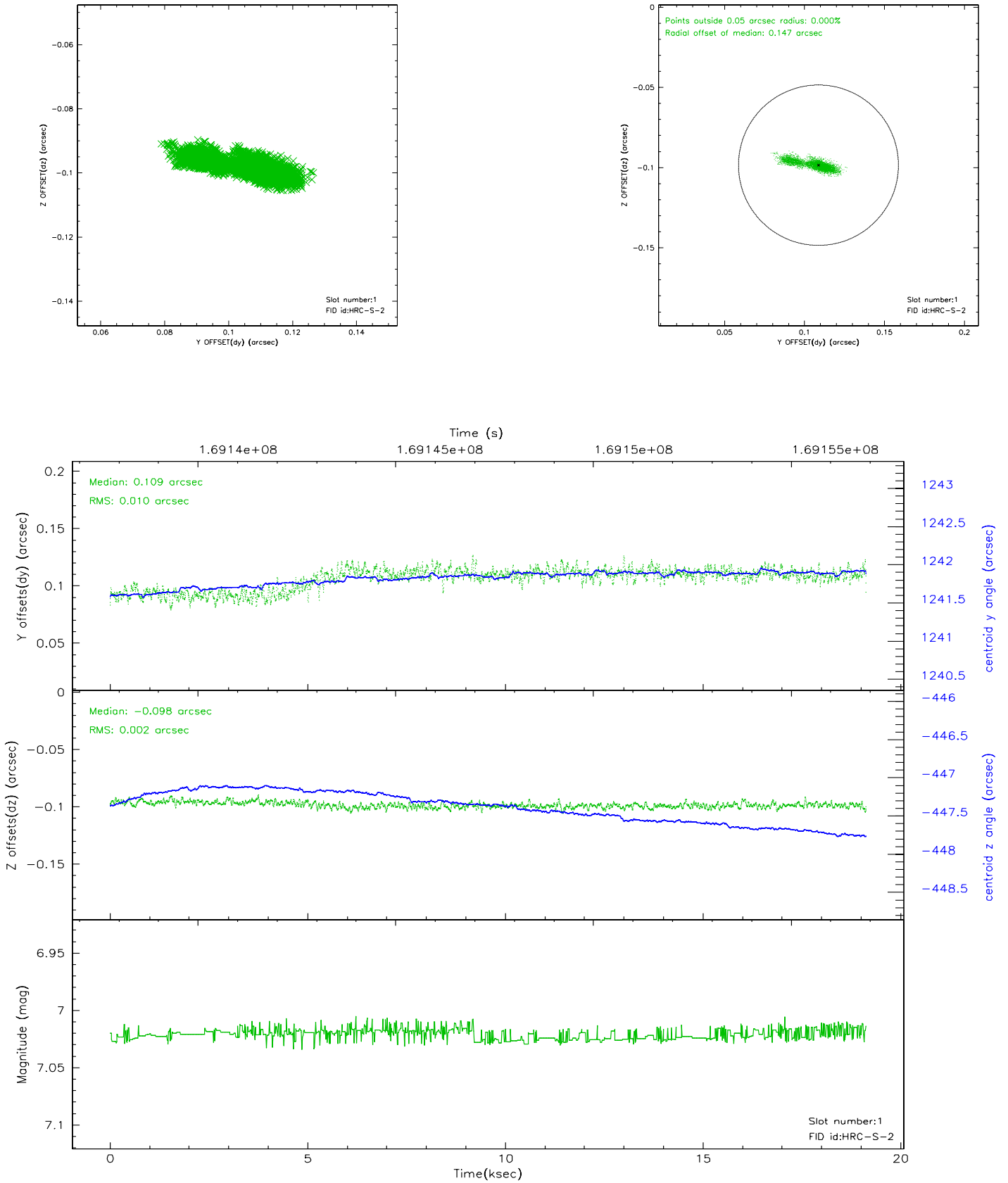


## 2.5 FID Slots

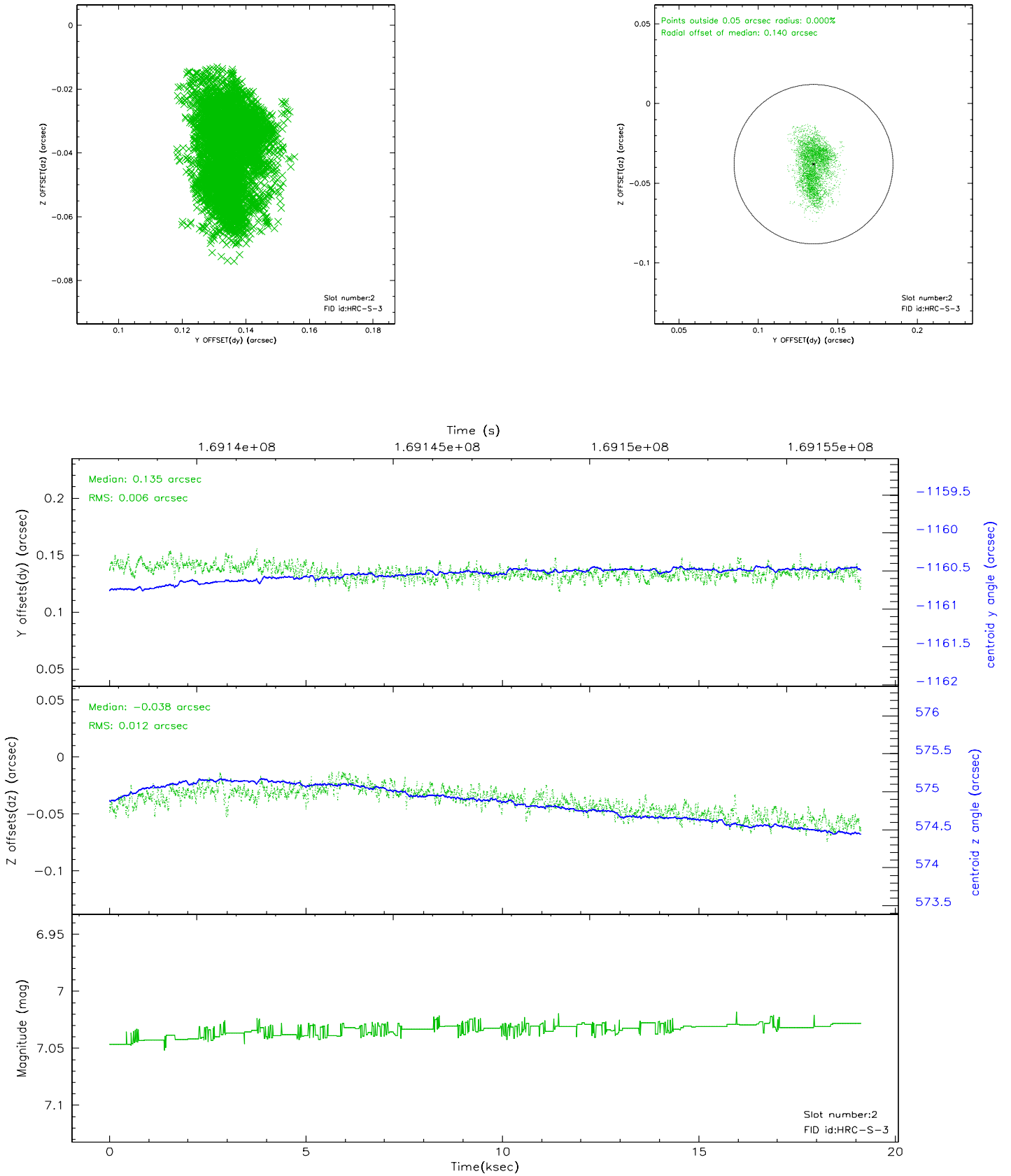
### 2.5.1 Slot 0



## 2.5.2 Slot 1

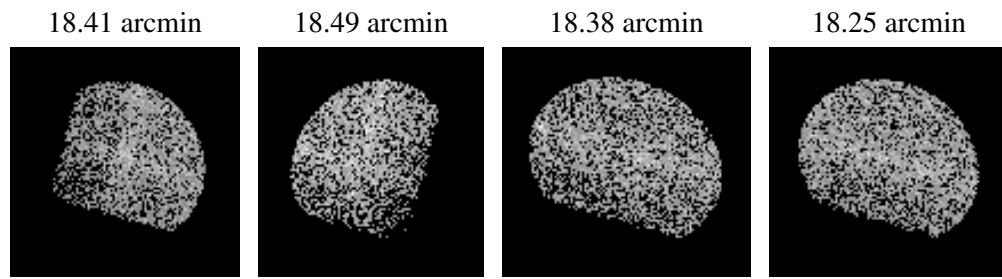


### 2.5.3 Slot 2





### 3 Point Sources



## A Summary

### A.1 Status

V&V Scientist	Jen Lauer
V&V Date (YYYY-MM-DD)	2006.08.13
V&V Edition	1
V&V Disposition and Status	OK
V&V Charge Time	18.966

### A.2 Comments

Window constraint met.