

# V&V Reference Report

## L2 ASCDS Version : 7.6.8.1

Observation 3693 - L2 Version 001  
Chandra X-Ray Center

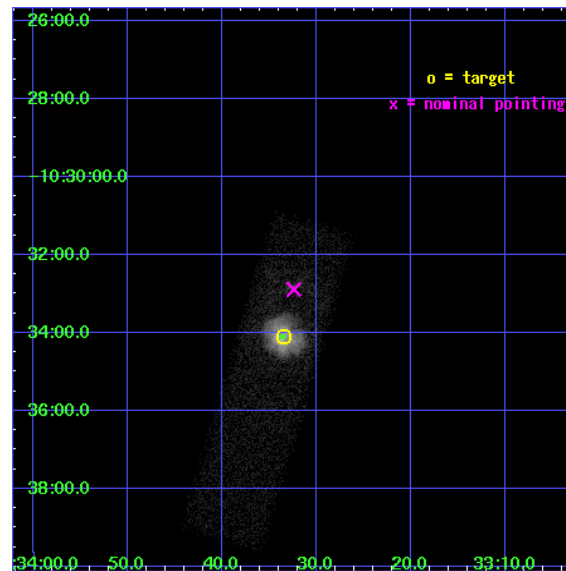
L2 Processing Date : Aug 11 2006

## Contents

<b>1</b>	<b>Front</b>	<b>2</b>
<b>2</b>	<b>OBI</b>	<b>3</b>
2.1	OBI . . . . .	3
2.1.1	Images . . . . .	3
2.1.2	Bias . . . . .	3
2.1.3	Parameters . . . . .	4
2.1.4	Events . . . . .	4
2.2	Compared Parameters . . . . .	5
2.3	Aspect . . . . .	6
2.4	Star Slots . . . . .	9
2.4.1	Slot 3 . . . . .	9
2.4.2	Slot 4 . . . . .	10
2.4.3	Slot 5 . . . . .	11
2.4.4	Slot 6 . . . . .	12
2.4.5	Slot 7 . . . . .	13
2.5	FID Slots . . . . .	14
2.5.1	Slot 0 . . . . .	14
2.5.2	Slot 1 . . . . .	15
2.5.3	Slot 2 . . . . .	16
<b>3</b>	<b>Point Sources</b>	<b>17</b>
<b>A</b>	<b>Summary</b>	<b>18</b>
A.1	Status . . . . .	18
A.2	Comments . . . . .	18

# 1 Front

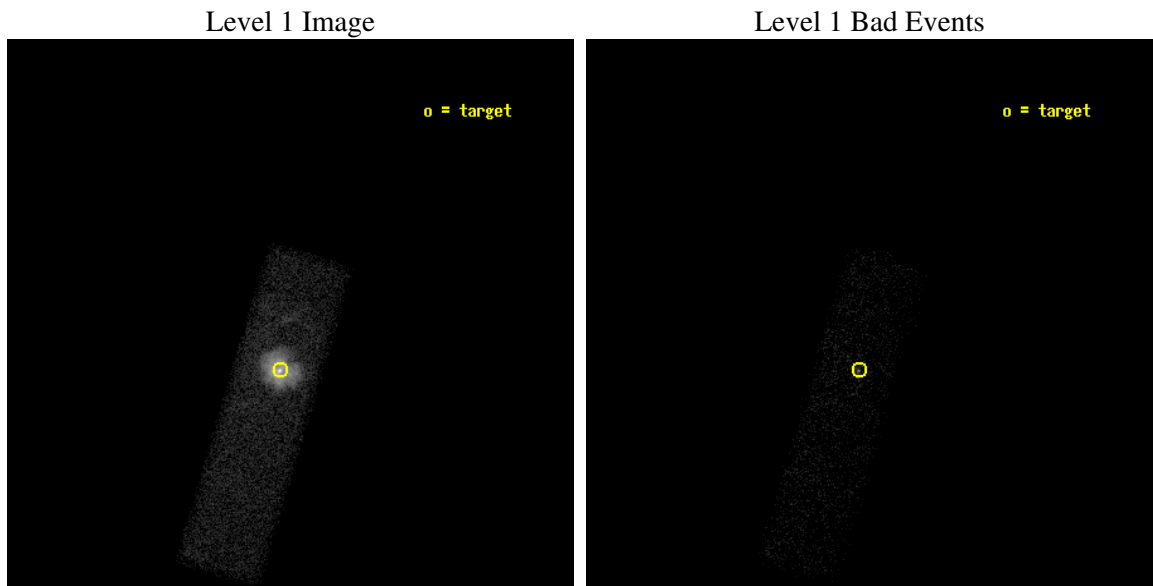
seq_num	590305
obs_id	3693
title	AO4A OBSERVATIONS OF THE STANDARD CANDLES CAS A AND G21.5-09
observer	Dr. CXC Calibration
object	G21.5-0.9[Chip S3, T=120, Offsets=-1.0,0,0]
dtcycle	0
cycle	P
ra_targ	278.389583
dec_targ	-10.568528
ra_nom	278.38519333277
dec_nom	-10.548258908257
roll_nom	106.66504064061
revision	2
ontime	10285.477063239
livetime	9783.5794380659
ontime7	10285.477063239
l2events	43317



## 2 OBI

### 2.1 OBI

#### 2.1.1 Images



#### 2.1.2 Bias

Chip 7



### 2.1.3 Parameters

obi_num	1
ascdsver	7.6.8.1
caldbver	3.2.3
date	2006-08-11T23:18:40
revision	2

sched_exp_time	9459.400000
ontime	10287.490315795
ontime7	10287.490315795
l1events	56968

### 2.1.4 Events

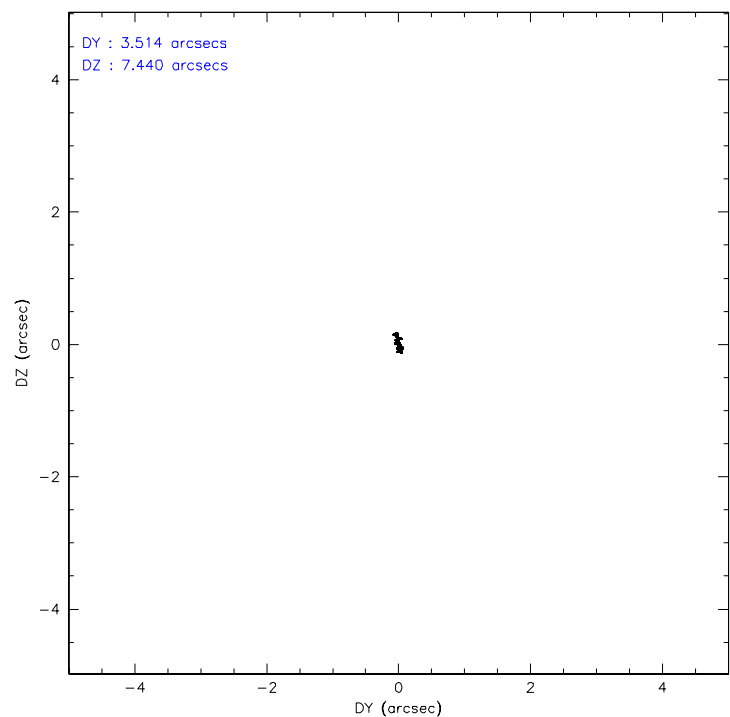
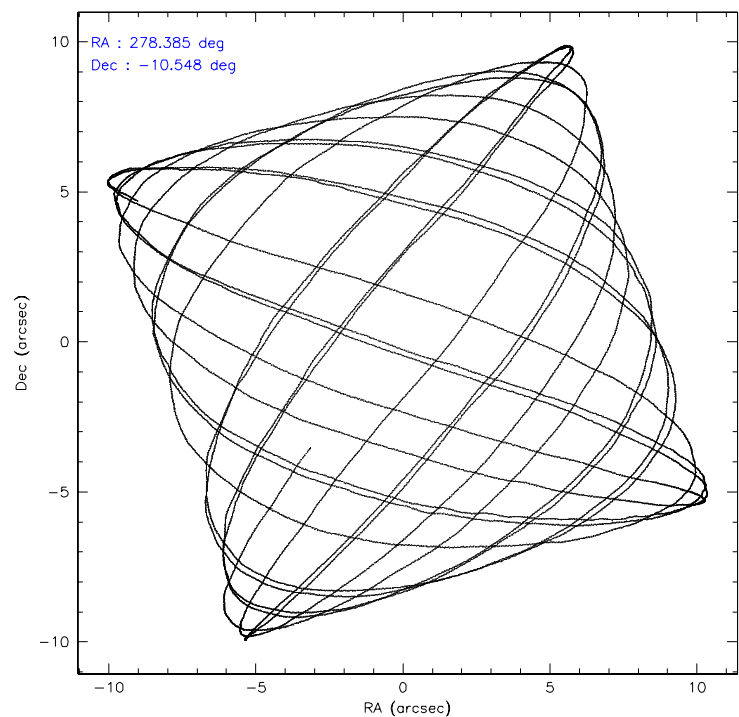
	<b>ccd 7</b>
level 1 events	56968
rejected events	13287
rejected %	23%

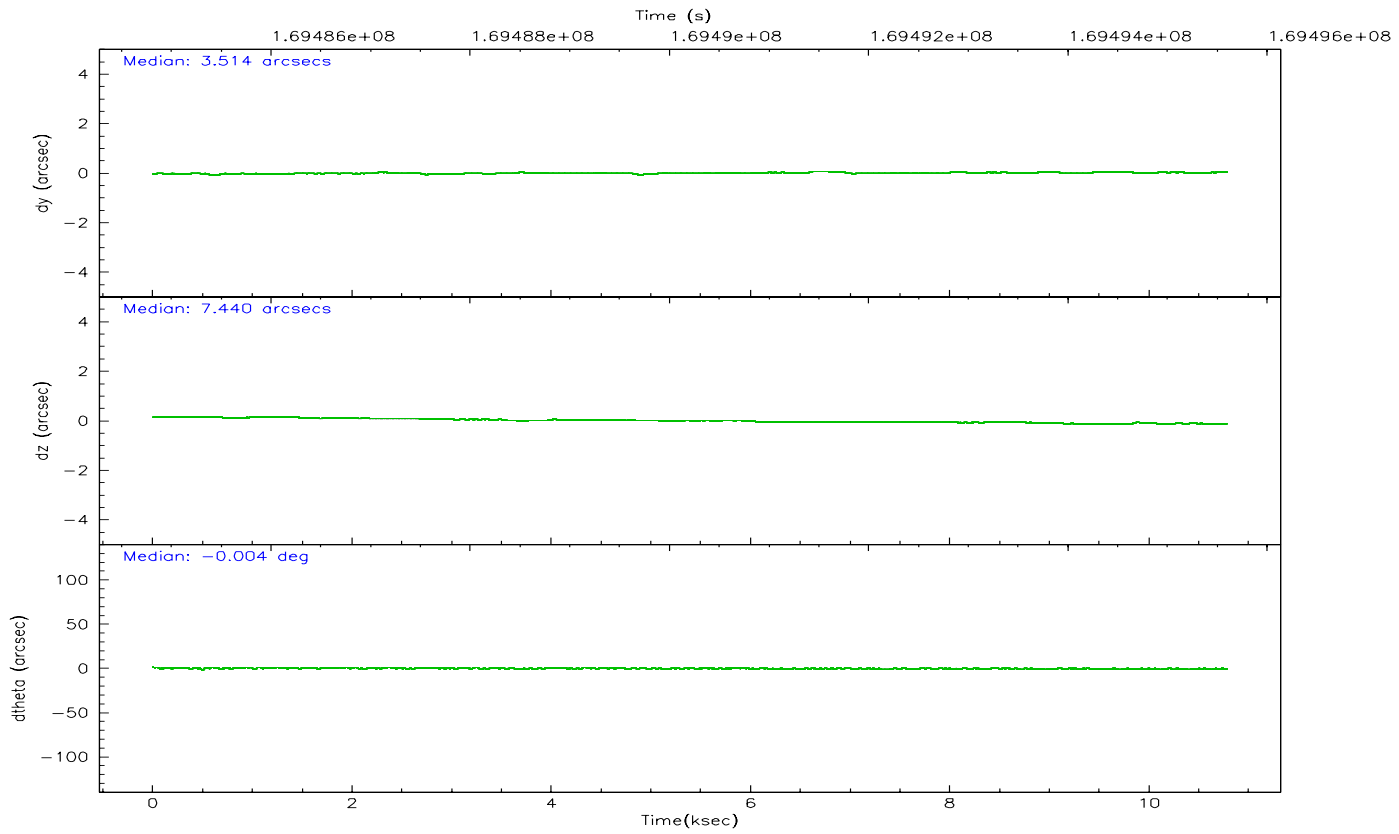
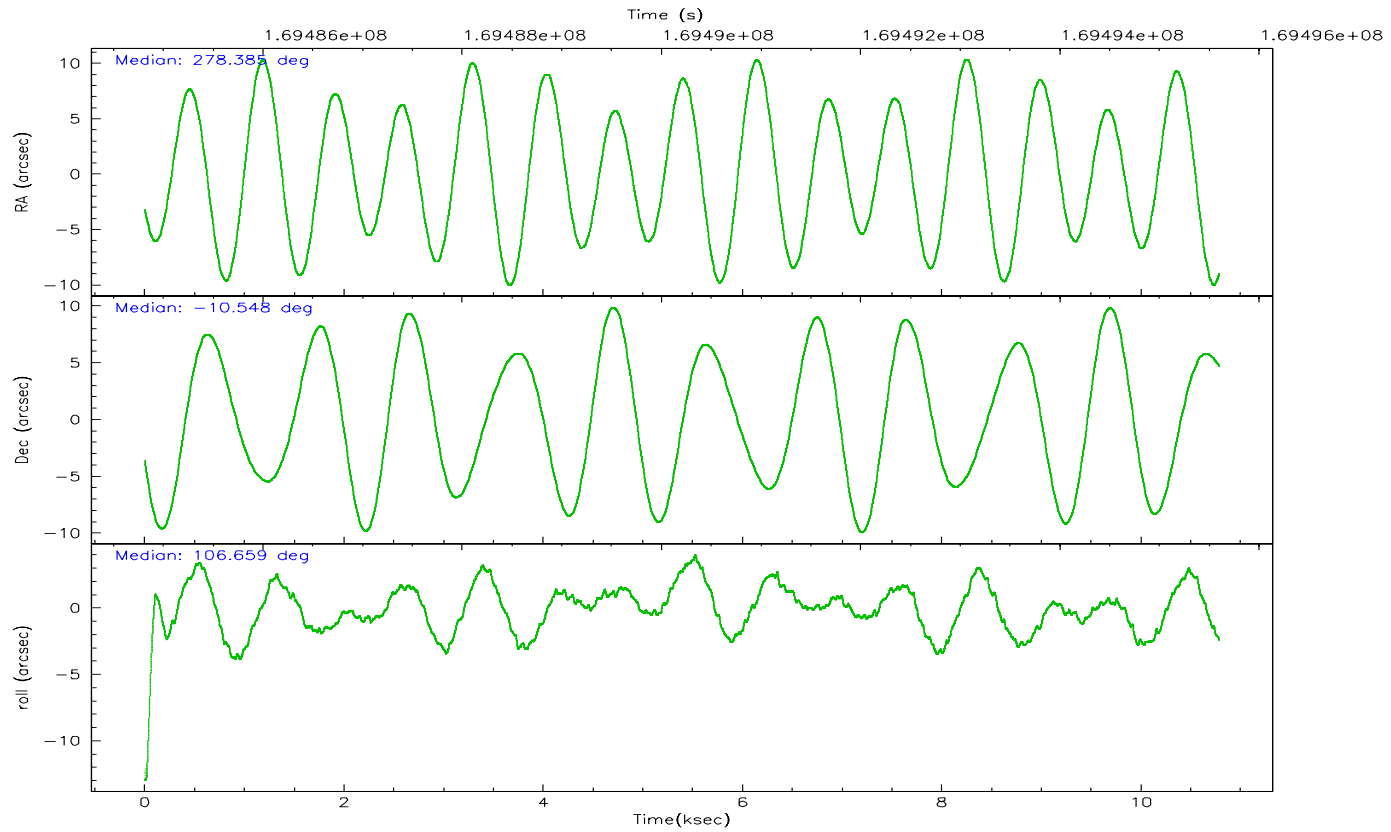
	<b>ccd 7</b>
grade 0 events	7580
	13%
grade 1 events	41
	0%
grade 2 events	11524
	20%
grade 3 events	4386
	7%
grade 4 events	4253
	7%
grade 5 events	1790
	3%
grade 6 events	15951
	27%
grade 7 events	11443
	20%

## 2.2 Compared Parameters

Parameter	Planned	Actual	Parameter	Planned	Actual
Instrument	ACIS	ACIS	Obspar format version number	6	6
Detector	ACIS-7	ACIS-7	Obspar file type	PREDICTED	ACTUAL
Grating	NONE	NONE	Obspar update status	NONE	UPDATED
Data mode	VFAINT	VFAINT	On-chip summing requested	N	N
Observation mode	POINTING	POINTING	Subarray requested	CUSTOM	1/4
Pointing RA	278.405638	278.3851933327728	Subarray start row	384	384
Pointing Dec	-10.566627	-10.54825890825659	Subarray row count	256	256
Pointing Roll	106.512153	106.6650406406113	Alternating exposures requested	N	N
Window start time	168134464.184000	168134464.184000	Primary exposure time	0.000000	0.8
Window stop time	170640064.184000	170640064.184000			
SIM focus pos (mm)	-0.684267	-0.6828225247311905			
SIM defocus (mm)	0	0.001444936568705701			
SIM translation stage pos (mm)	-190.132523	-190.1425803651734			
SIM translation stage offset (mm)	0	0.01005778216563158			
Observation start time	169486143.184000	169484611.66046			
Observation start date	2003-05-16T15:27:59	2003-05-16T15:03:31			
Observation end time	169495603.184000	169495917.41093			
Observation end date	2003-05-16T18:05:39	2003-05-16T18:11:57			
Read mode	TIMED	TIMED			

## 2.3 Aspect





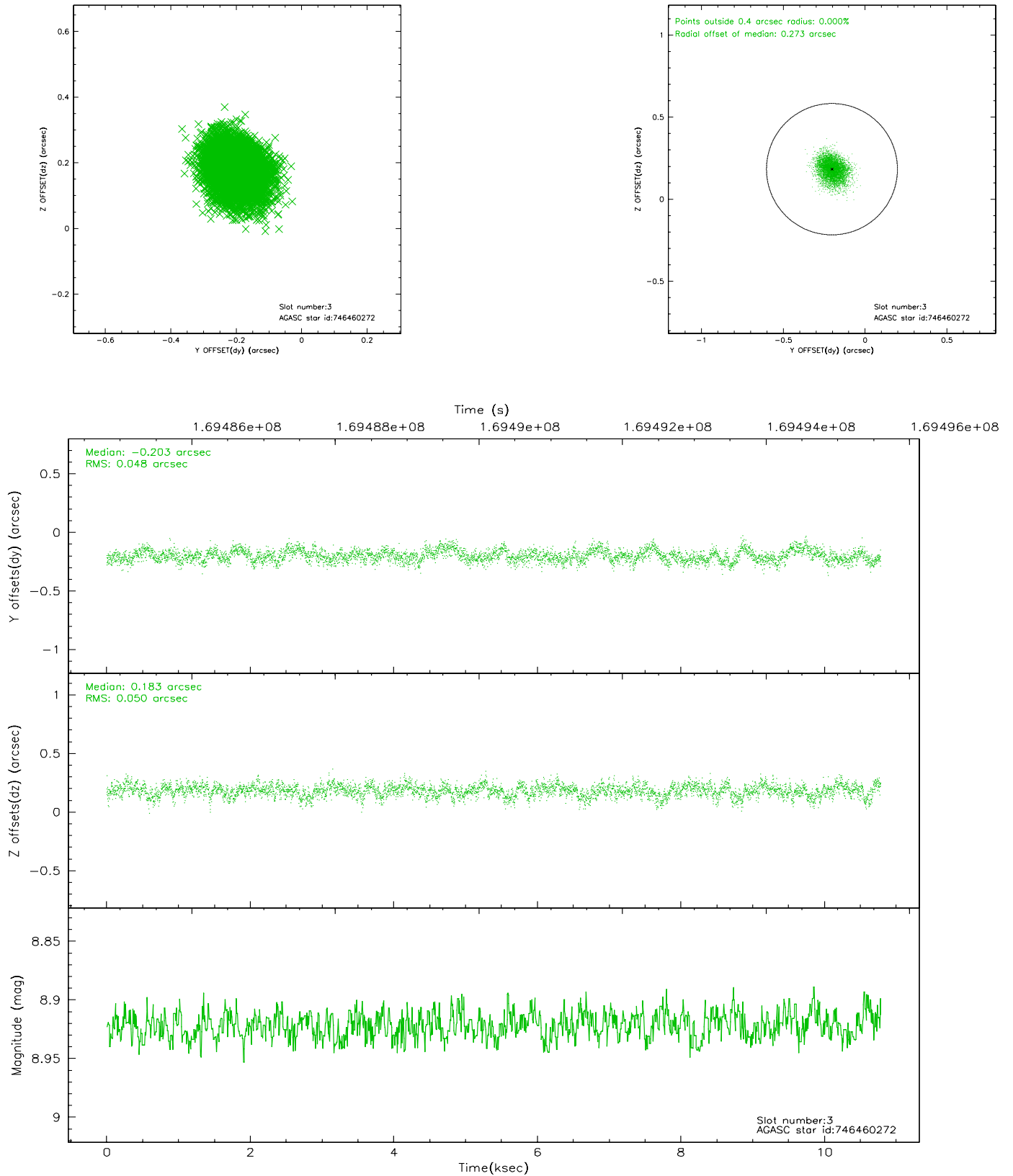
### Slot Statistics

slot	status	id	mag	n_pts	med_dy	med_dz	dr1	dr2	ra	dec	mean_y	mean_z
0	FID	ACIS-S-2	7.11	2628	-0.002	0.016	0.006	0.011	0.000000	0.000000	-756.18	-1728.55
1	FID	ACIS-S-4	7.21	2628	-0.023	-0.003	0.005	0.009	0.000000	0.000000	2156.87	179.41
2	FID	ACIS-S-5	7.24	2628	-0.006	-0.004	0.006	0.010	0.000000	0.000000	-1808.40	173.63
3	GUIDE	746460272	8.92	5258	-0.203	0.183	0.075	0.121	278.847488	-10.152127	984.99	-1924.59
4	GUIDE	746460328	9.81	5256	-0.155	0.059	0.114	0.179	278.603974	-9.898096	2107.65	-1358.24
5	GUIDE	746462392	8.53	5257	0.085	0.043	0.071	0.110	279.038421	-10.890715	-1756.34	-1813.04
6	GUIDE	746462456	8.39	5256	0.056	-0.024	0.075	0.115	278.652171	-10.530173	-122.79	-874.01
7	GUIDE	746995400	9.50	5257	0.212	-0.257	0.098	0.161	278.078957	-11.289885	-2168.85	1845.51

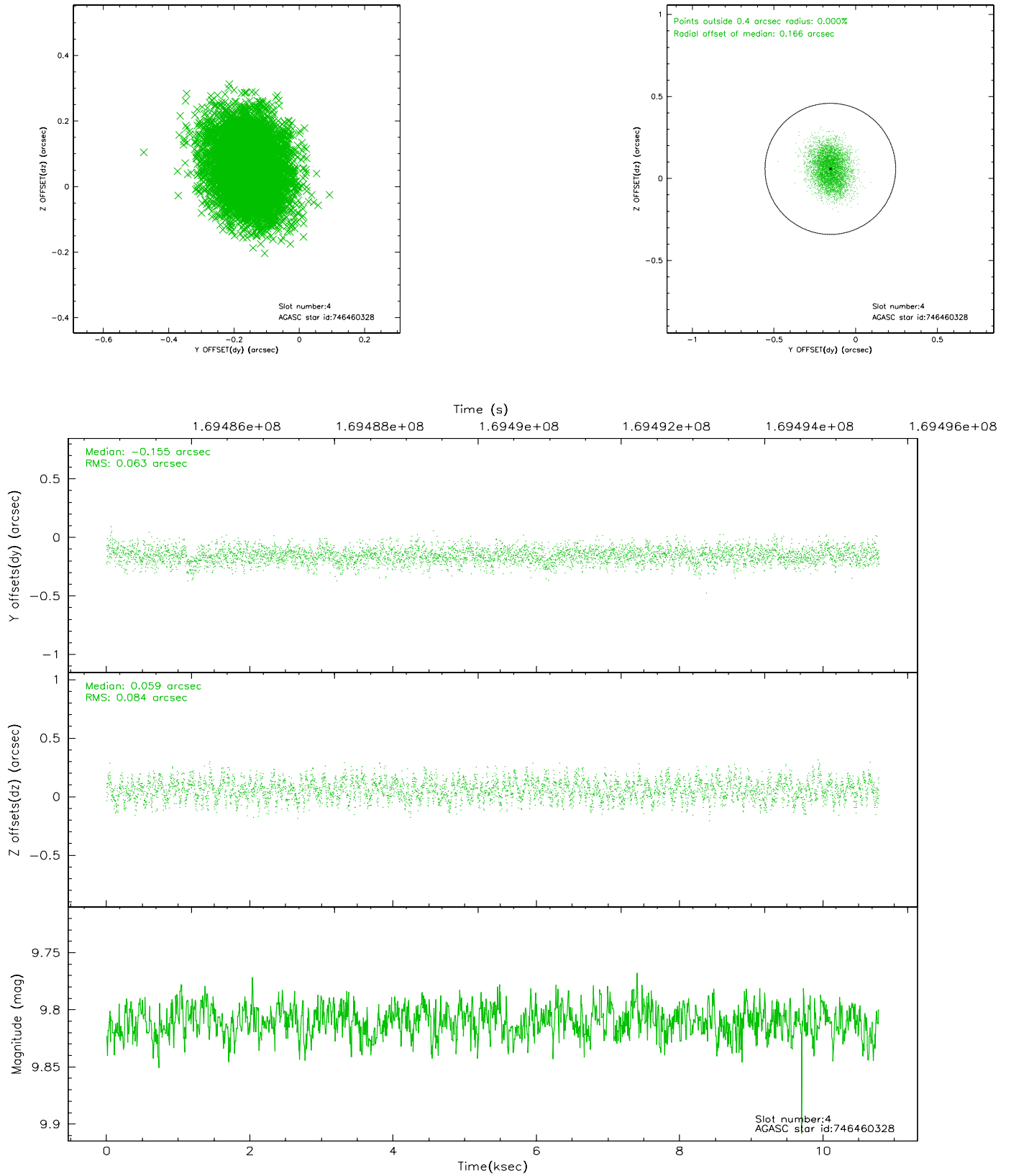


## 2.4 Star Slots

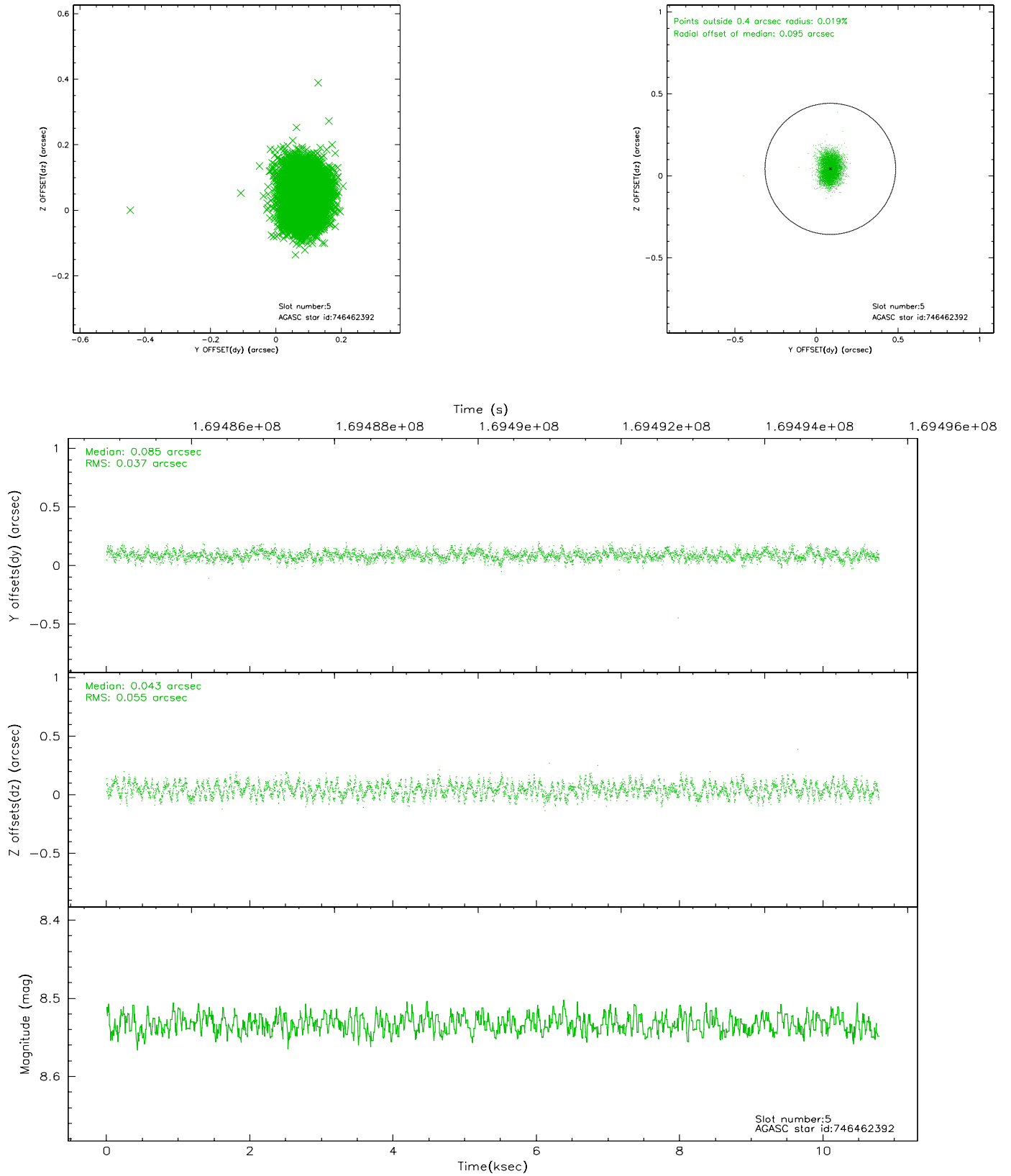
### 2.4.1 Slot 3



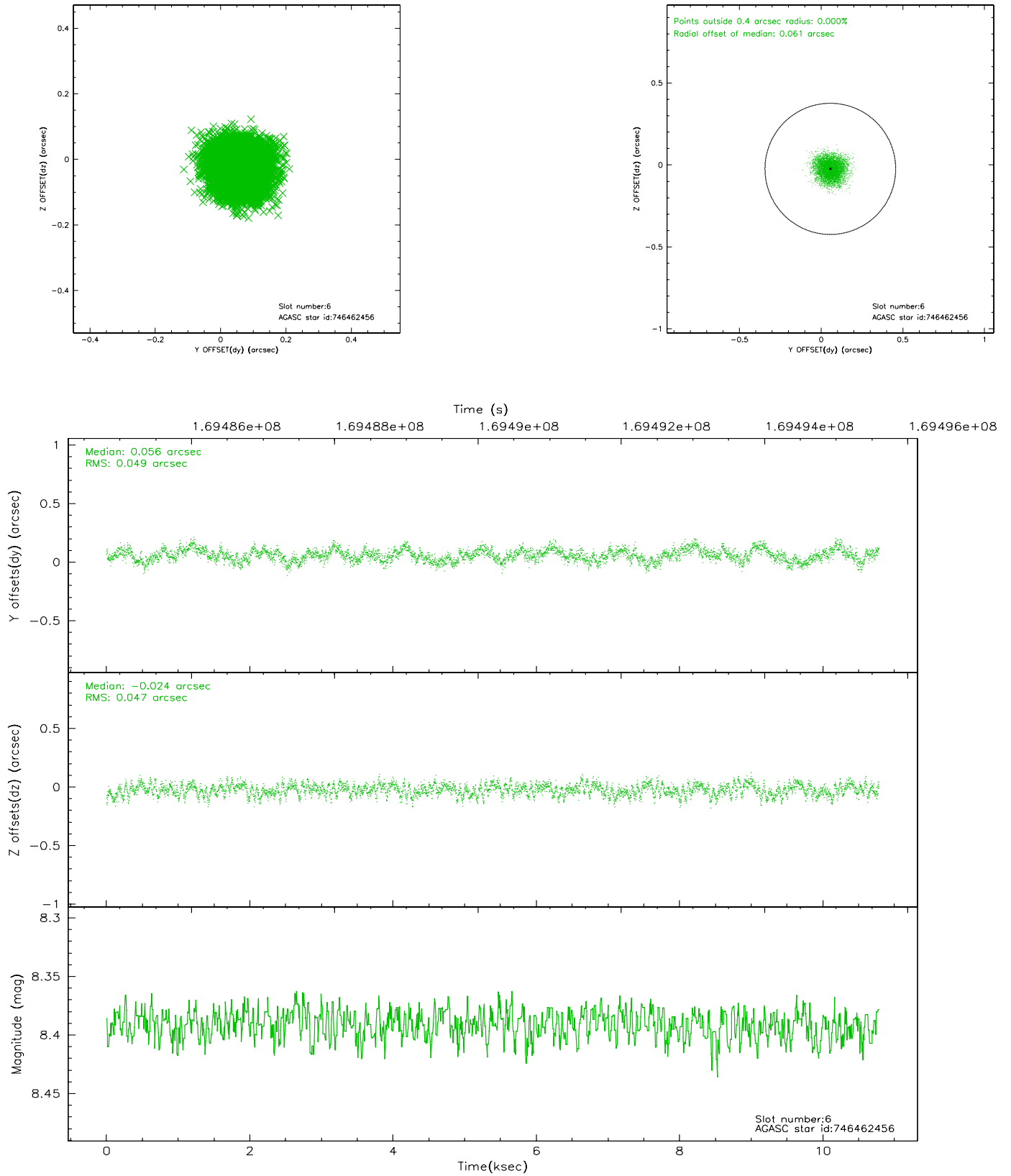
## 2.4.2 Slot 4



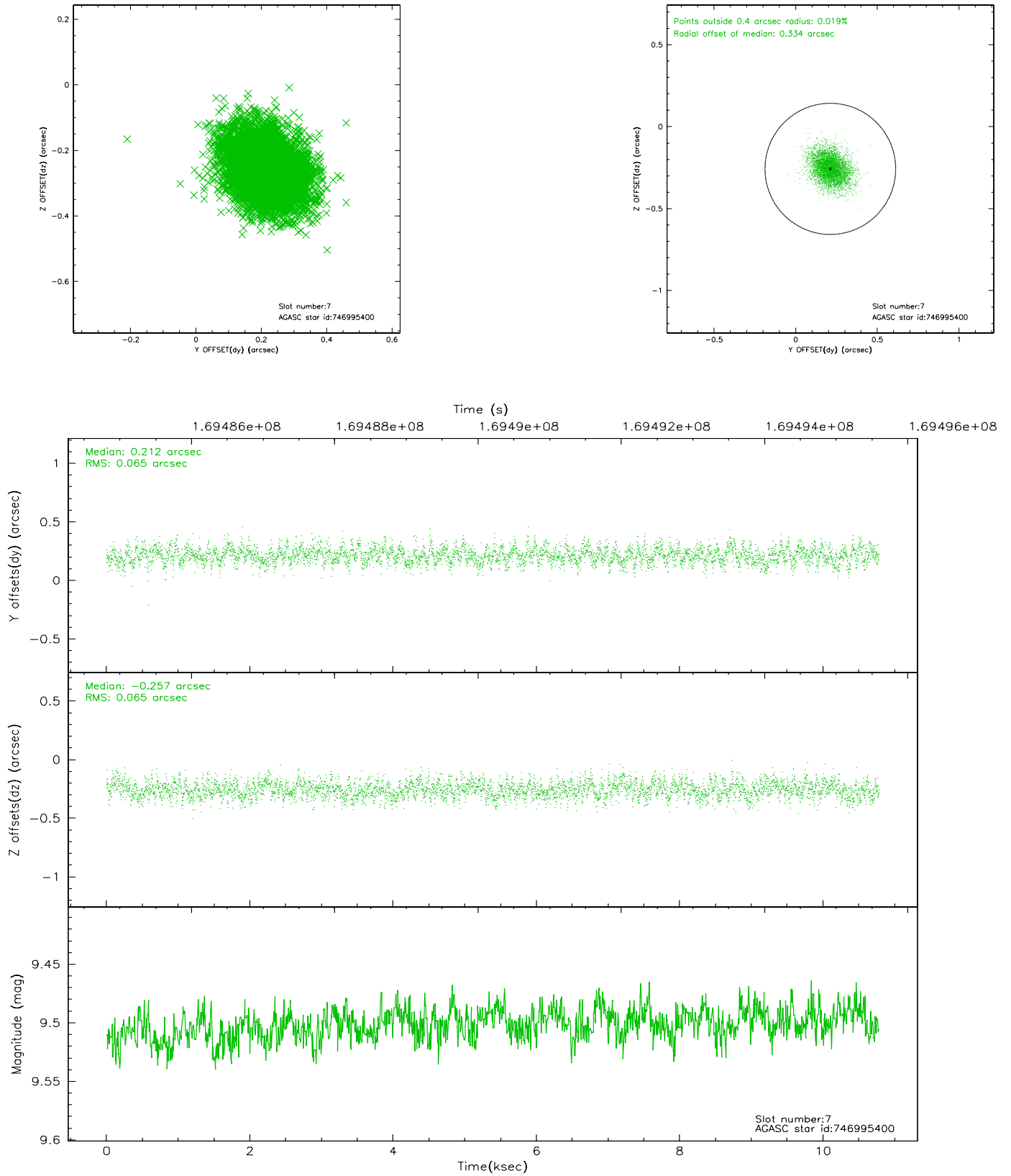
### 2.4.3 Slot 5



## 2.4.4 Slot 6

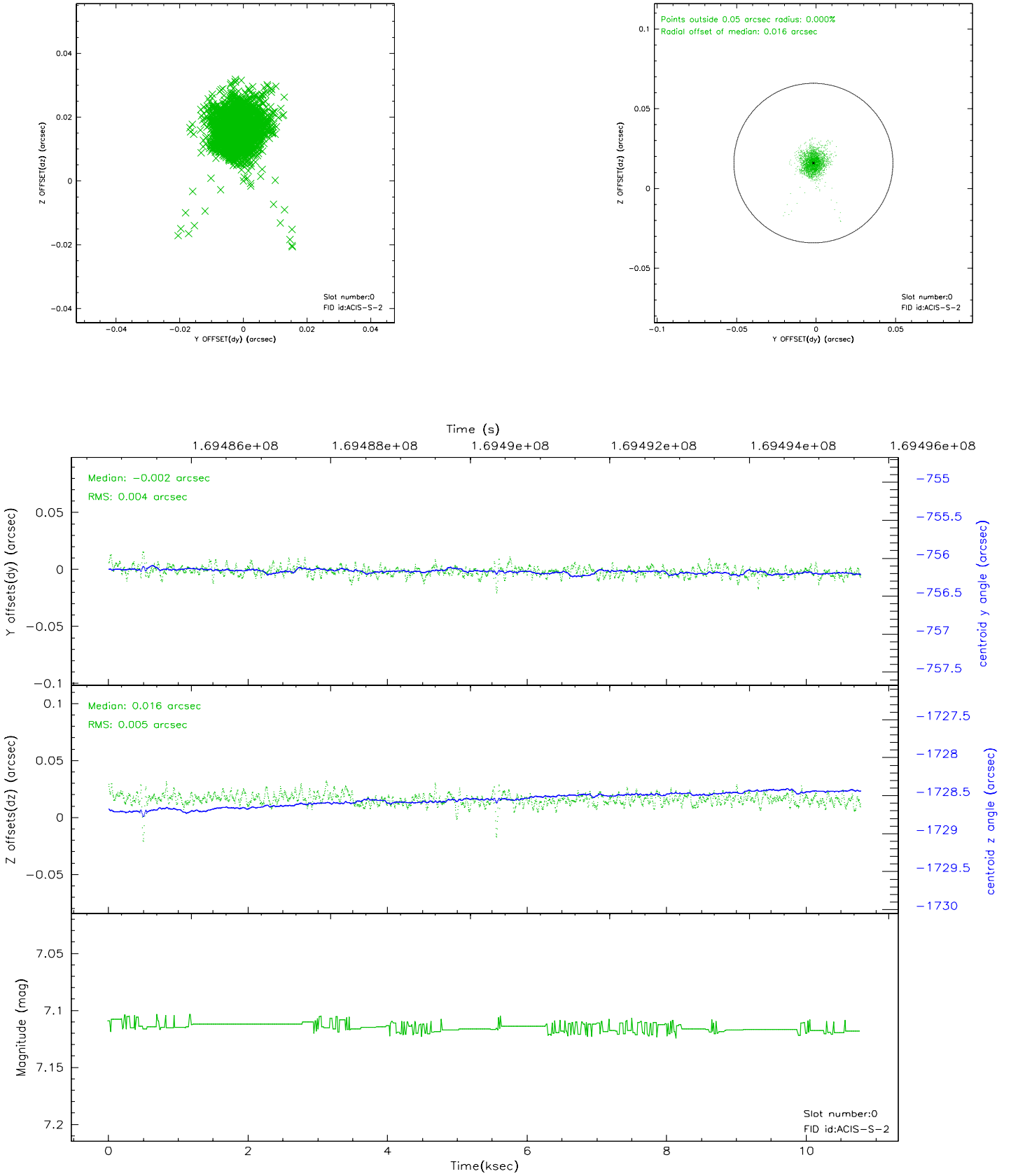


## 2.4.5 Slot 7

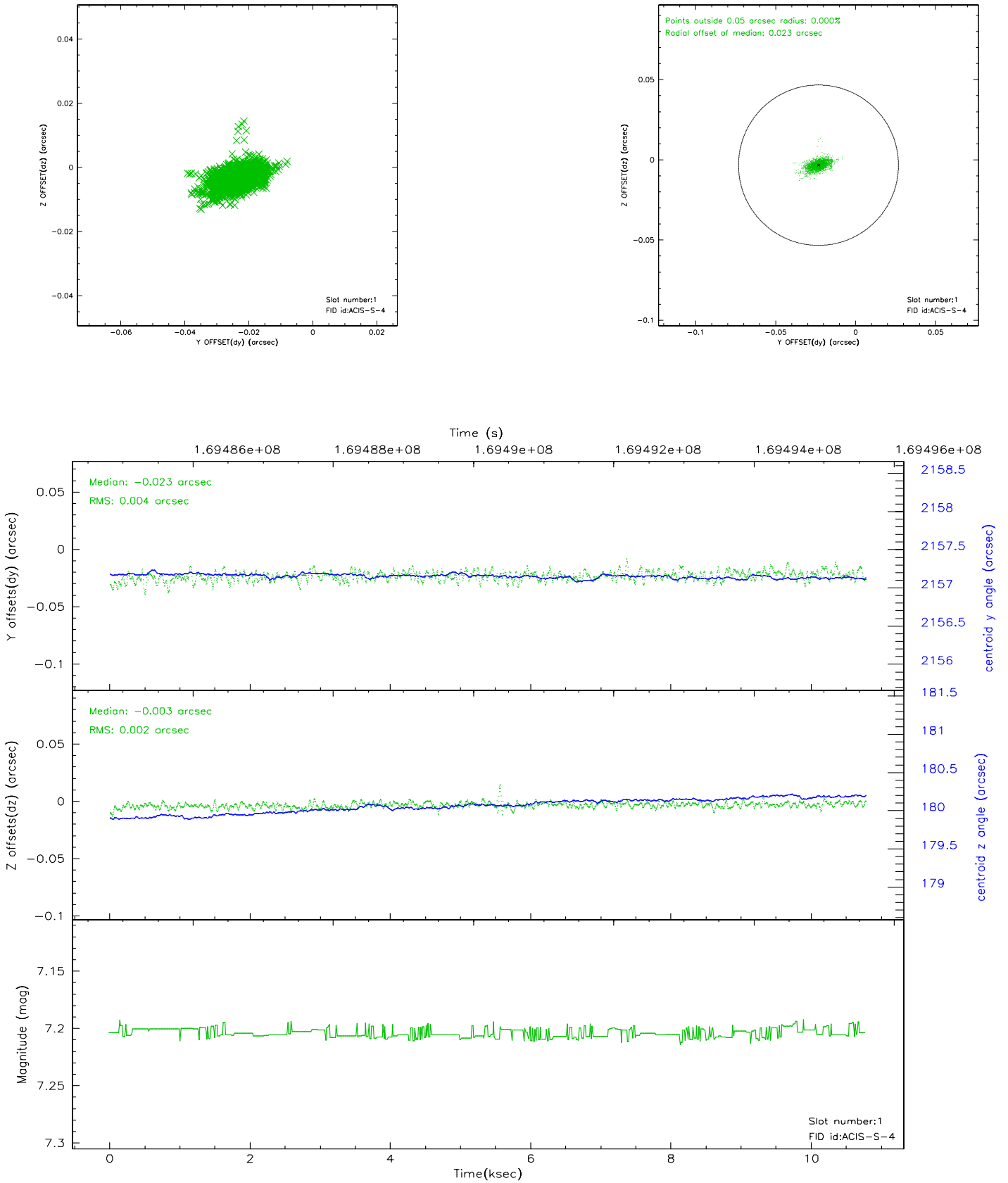


## 2.5 FID Slots

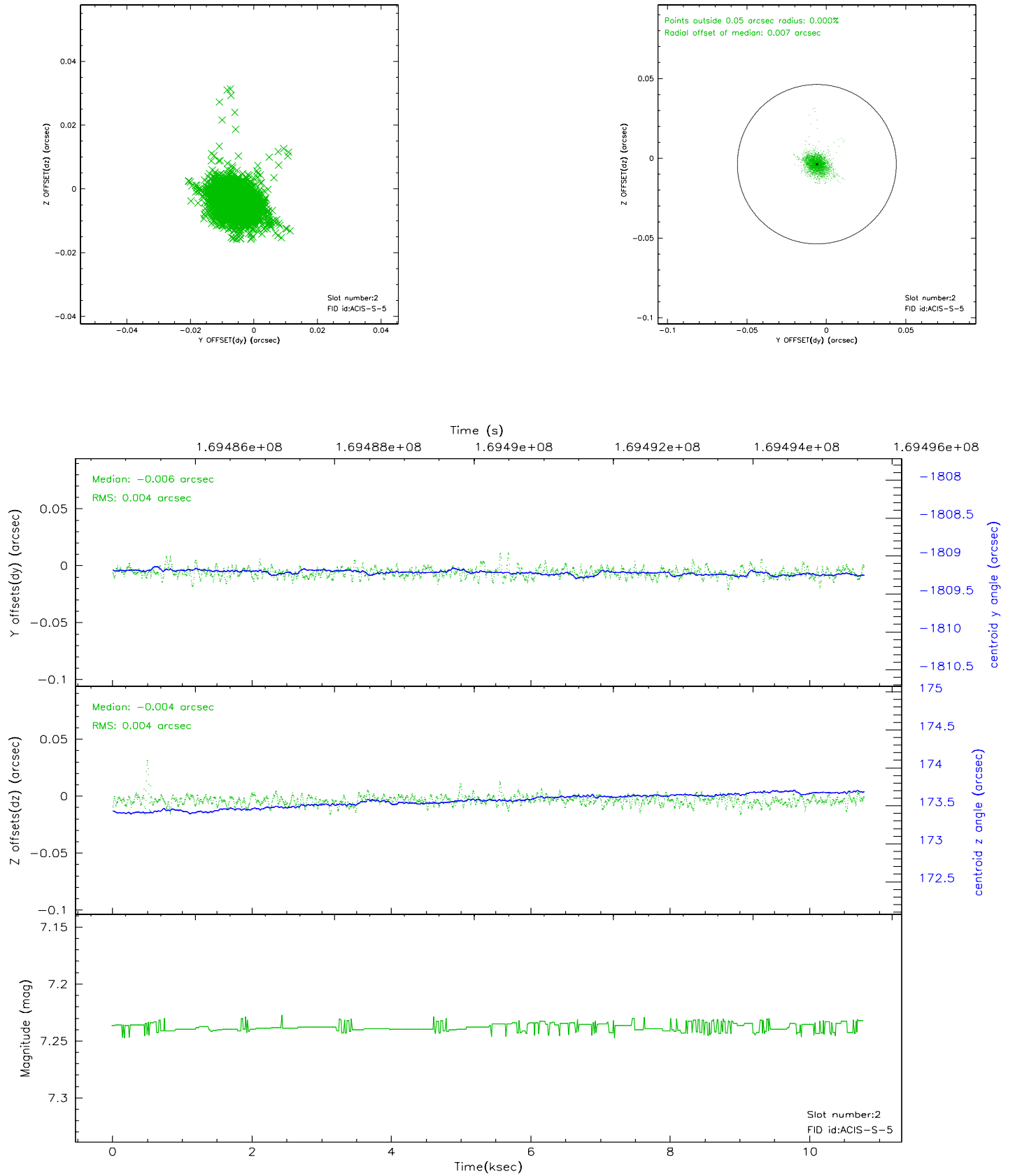
### 2.5.1 Slot 0



## 2.5.2 Slot 1



### 2.5.3 Slot 2





### 3 Point Sources

## A Summary

### A.1 Status

V&V Scientist	Jen Lauer
V&V Date (YYYY-MM-DD)	2006.08.13
V&V Edition	1
V&V Disposition and Status	OK
V&V Charge Time	10.286

### A.2 Comments

Window constraint met.