

V&V Reference Report

L2 ASCDS Version : 8.4.5

Observation 3667 - L2 Version 4
Chandra X-Ray Center

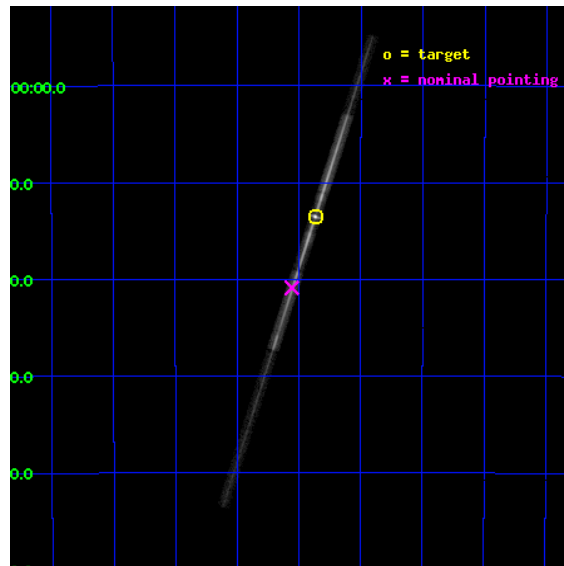
L2 Processing Date : Mar 22 2013

Contents

1	Front	2
2	OBI	3
2.1	OBI	3
2.1.1	Images	3
2.1.2	Bias	3
2.1.3	Parameters	4
2.1.4	Events	4
2.2	Compared Parameters	5
2.3	Aspect	6
2.4	Star Slots	9
2.4.1	Slot 3	9
2.4.2	Slot 4	10
2.4.3	Slot 5	11
2.4.4	Slot 6	12
2.4.5	Slot 7	13
2.5	FID Slots	14
2.5.1	Slot 0	14
2.5.2	Slot 1	15
2.5.3	Slot 2	16
3	Gratings	17
3.1	LETG Arm	17
A	Summary	19
A.1	Status	19
A.2	Comments	19

1 Front

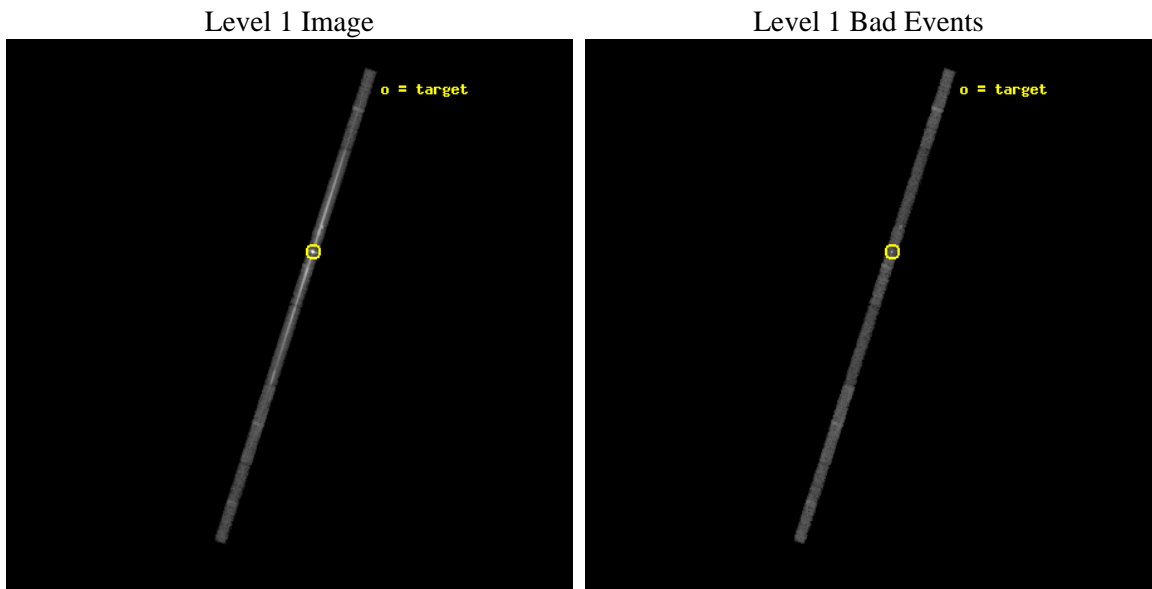
seq_num	790079	Sequence number
obs_id	3667	Observation id
title	INVESTIGATING THE CONTAMINATION BUILD-UP ON ACIS	Proposal title
observer	Dr. CXC Calibration	Principal investigator
object	PKS2155-304	Source name
dtcycle	0	
cycle	P	events from which exps? Prim/Second/Both
ra_targ	329.716667	Observer's specified target RA [deg]
dec_targ	-30.225556	Observer's specified target Dec [deg]
ra_nom	329.76411901598	Nominal RA [deg]
dec_nom	-30.348203828694	Nominal Dec [deg]
roll_nom	107.88543690145	Nominal Roll [deg]
revision	4	Processing version of data
ontime	15011.458704352	Sum of GTIs [s]
livetime	14180.099715328	Livetime [s]
ontime4	15010.661821365	Sum of GTIs [s]
ontime5	15011.458704352	Sum of GTIs [s]
ontime6	15011.458704352	Sum of GTIs [s]
ontime7	15011.458704352	Sum of GTIs [s]
ontime8	15011.458704352	Sum of GTIs [s]
ontime9	15011.458704352	Sum of GTIs [s]
l2events	203902	Number of level 2 events



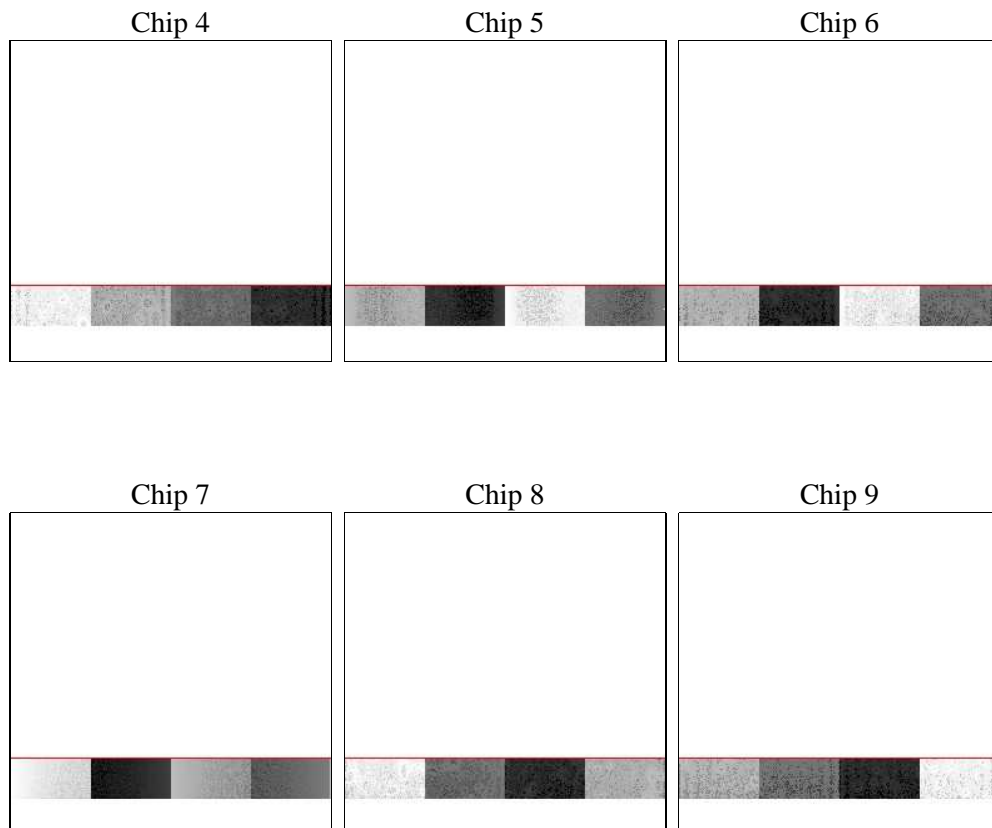
2 OBI

2.1 OBI

2.1.1 Images



2.1.2 Bias



2.1.3 Parameters

obi_num	0	Obi number	sched_exp_time	14500.000000	[s] Scheduled observation exposure time
ascdsver	8.4.5	Processing system revision	ontime	15011.458704352	Sum of GTIs [s]
caldsver	4.5.2	 	ontime4	15010.661821365	Sum of GTIs [s]
date	2012-10-09T04:00:54	Date and time of file creation	ontime5	15011.458704352	Sum of GTIs [s]
revision	3	Processing version of data	ontime6	15011.458704352	Sum of GTIs [s]
			ontime7	15011.458704352	Sum of GTIs [s]
			ontime8	15011.458704352	Sum of GTIs [s]
			ontime9	15011.458704352	Sum of GTIs [s]
			l1events	297716	Number of level 1 events

2.1.4 Events

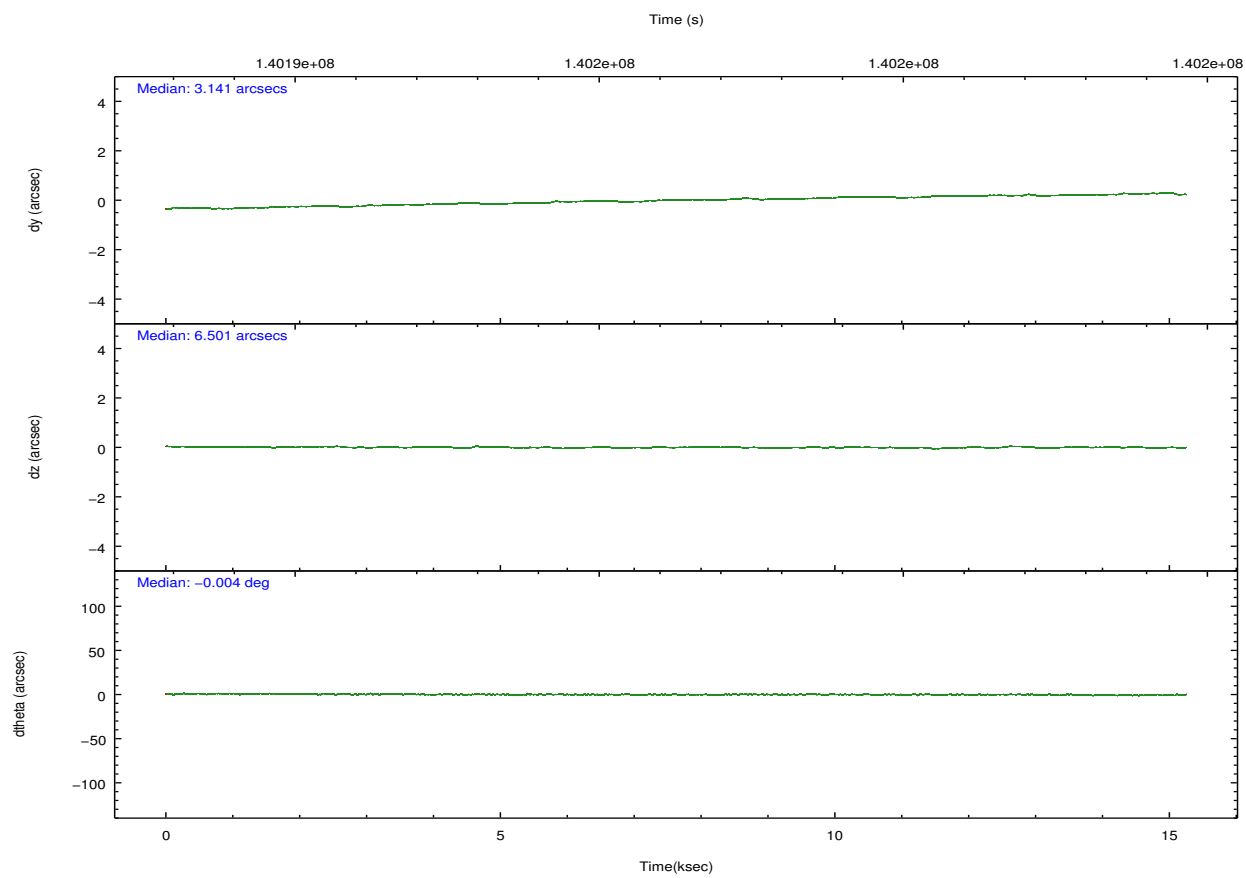
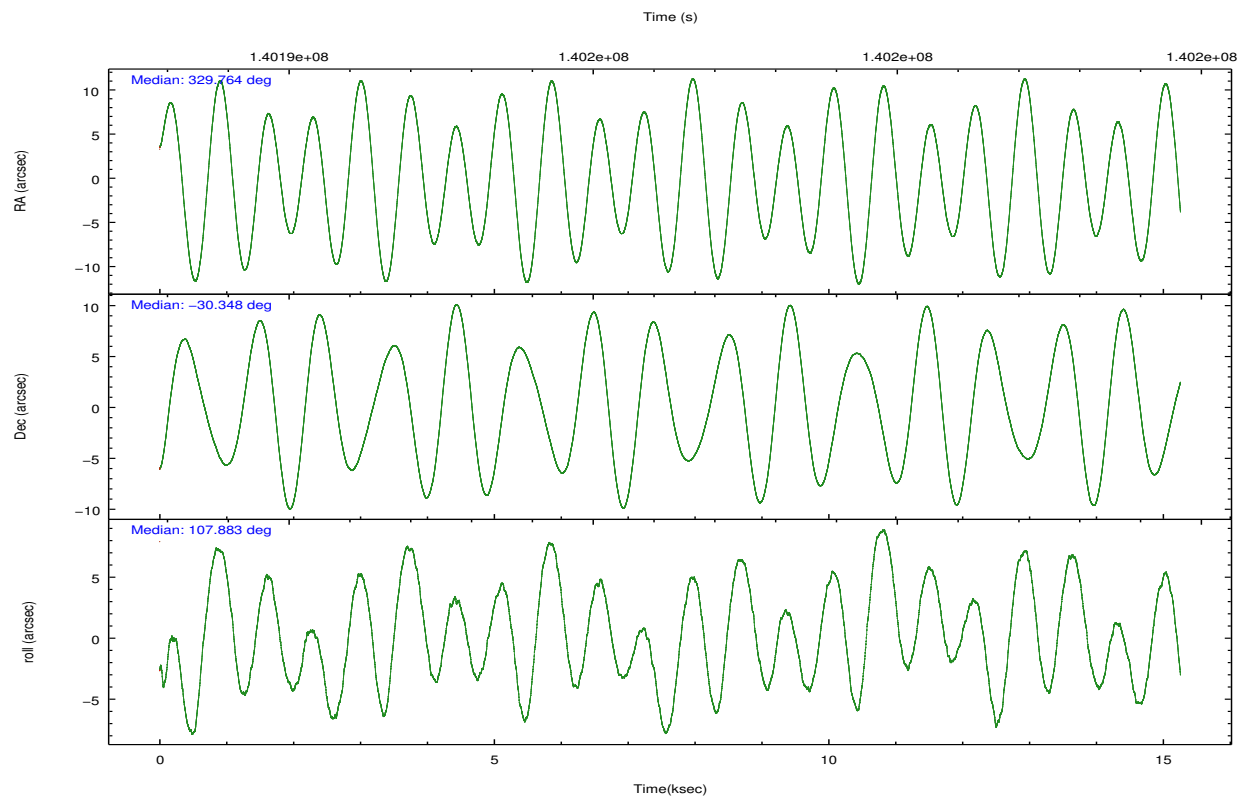
	ccd 4	ccd 5	ccd 6	ccd 7	ccd 8	ccd 9
level 1 events	20349	66977	131988	39028	23473	15901
rejected events	15866	9584	15364	9477	18076	13246
rejected %	77%	14%	11%	24%	77%	83%

	ccd 4	ccd 5	ccd 6	ccd 7	ccd 8	ccd 9
grade 0 events	2914	24863	95369	10960	2629	1381
	14%	37%	72%	28%	11%	8%
grade 1 events	4	318	740	22	5	1
	0%	0%	0%	0%	0%	0%
grade 2 events	560	13659	11248	6787	739	363
	2%	20%	8%	17%	3%	2%
grade 3 events	369	5542	3655	3235	535	343
	1%	8%	2%	8%	2%	2%
grade 4 events	330	5563	3587	3177	463	288
	1%	8%	2%	8%	1%	1%
grade 5 events	453	1900	752	1654	577	488
	2%	2%	0%	4%	2%	3%
grade 6 events	310	7771	2769	5394	1031	280
	1%	11%	2%	13%	4%	1%
grade 7 events	15409	7361	13868	7799	17494	12757
	75%	10%	10%	19%	74%	80%

2.2 Compared Parameters

Parameter	Planned	Actual	Parameter	Planned	Actual
Instrument	ACIS	ACIS	Obspar format version number	7	7
Detector	ACIS-456789	ACIS-456789	Obspar file type	PREDICTED	ACTUAL
Grating	LETG	LETG	Obspar update status	NONE	UPDATED
Data mode	FAINT	FAINT	Number of optional ACIS chips dropped	0	0
Observation mode	POINTING	POINTING	On-chip summing requested	N	N
[deg] Pointing RA	329.787780	329.764119015979	Subarray requested	CUSTOM	1/8
[deg] Pointing Dec	-30.366213	-30.34820382869412	Subarray start row	113	113
[deg] Pointing Roll	107.740761	107.8854369014525	Subarray row count	128	128
[s] Window start time (MET)	140054464.184000	140054464.184000	Alternating exposures requested	N	N
[s] Window stop time (MET)	143683264.184000	143683264.184000	[s] Primary exposure time	0.000000	0.7
[mm] SIM focus pos	-0.684267	-0.6828225247311905			
[mm] SIM defocus	0	0.001444936568705701			
[mm] SIM translation stage pos	-182.132523	-182.1370004450064			
[mm] SIM translation stage offset	-8	-7.995522138001405			
[s] Observation start time (MET)	140189396.184000	140188156.79015			
Observation start date	2002-06-11T13:28:52	2002-06-11T13:09:16			
[s] Observation end time (MET)	140203896.184000	140204224.6908			
Observation end date	2002-06-11T17:30:32	2002-06-11T17:37:04			
Read mode	TIMED	TIMED			

2.3 Aspect

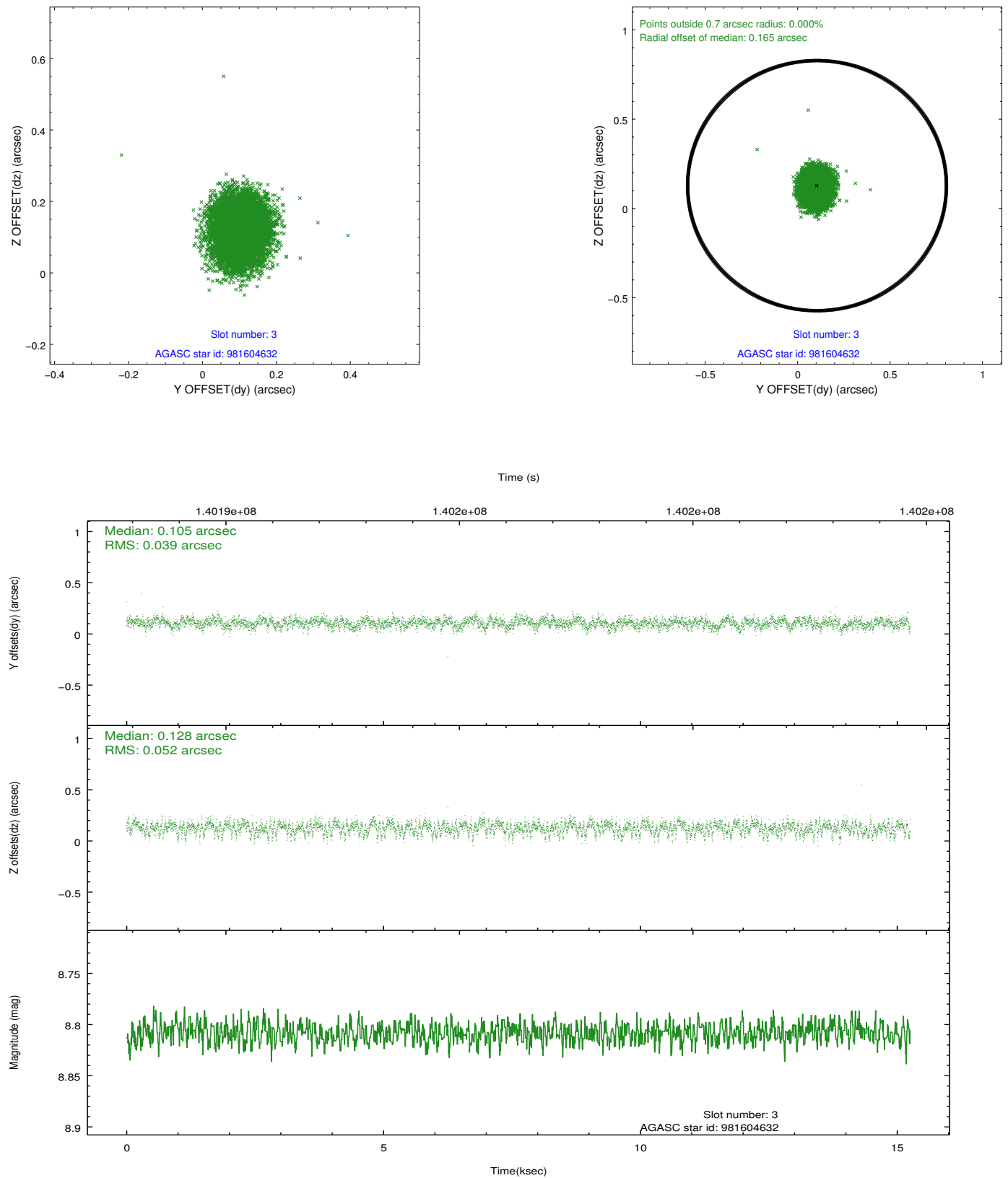


Slot Statistics

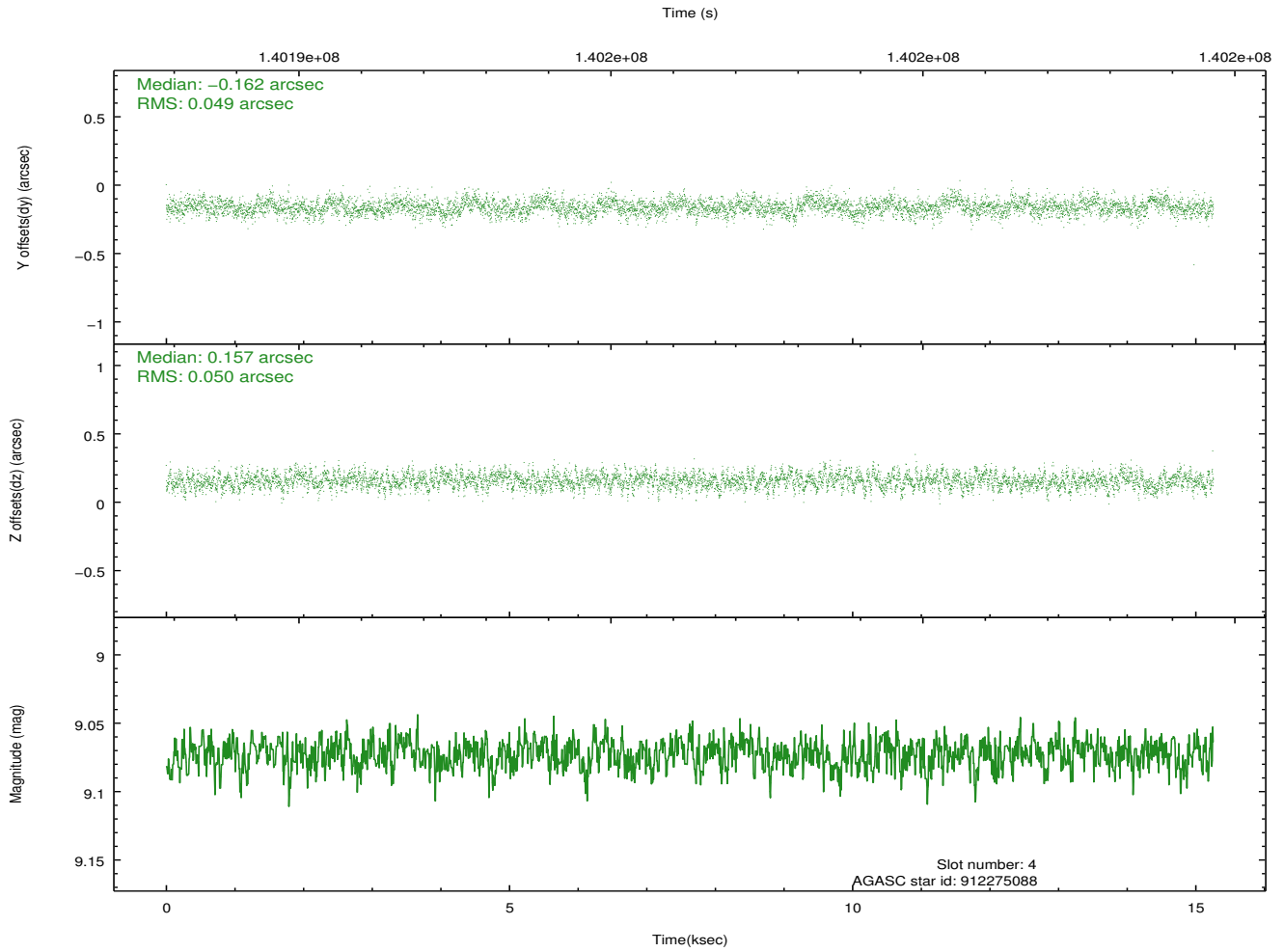
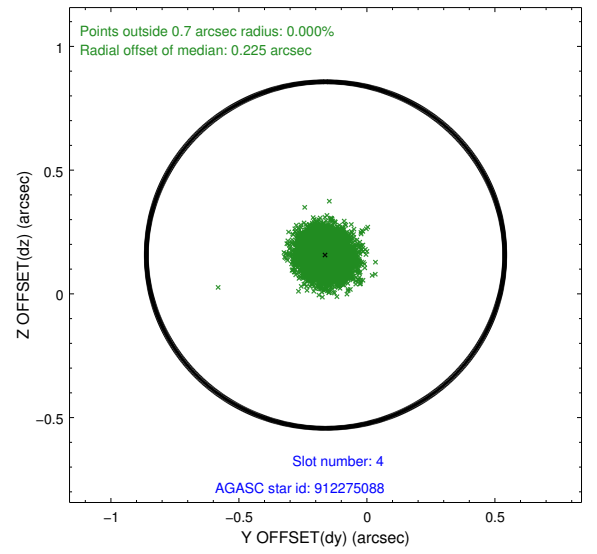
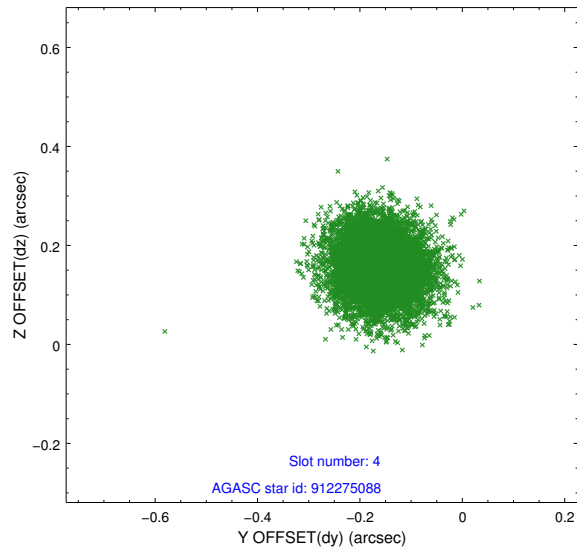
slot	status	id	mag	n_pts	med_dy	med_dz	dr1	dr2	ra	dec	mean_y	mean_z
0	FID	ACIS-S-2	7.09	3720	-0.038	-0.106	0.008	0.012	0.000000	0.000000	-755.25	-1892.46
1	FID	ACIS-S-4	7.18	3721	0.048	0.046	0.006	0.011	0.000000	0.000000	2158.00	15.79
2	FID	ACIS-S-5	7.23	3721	-0.042	0.067	0.007	0.012	0.000000	0.000000	-1807.70	9.85
3	GUIDE	981604632	8.81	7442	0.105	0.128	0.069	0.112	330.675672	-30.712490	-2034.74	-2234.25
4	GUIDE	912275088	9.07	7438	-0.162	0.157	0.075	0.121	329.619228	-29.738698	2311.50	-186.47
5	GUIDE	981478152	9.40	7372	0.008	-0.198	0.085	0.141	329.415589	-30.057192	1411.63	765.95
6	GUIDE	981468128	9.36	7440	0.184	0.102	0.073	0.120	329.756350	-30.158334	743.03	-134.64
7	GUIDE	981469488	9.60	7436	-0.139	-0.184	0.087	0.146	329.261199	-30.045155	1597.32	1211.79

2.4 Star Slots

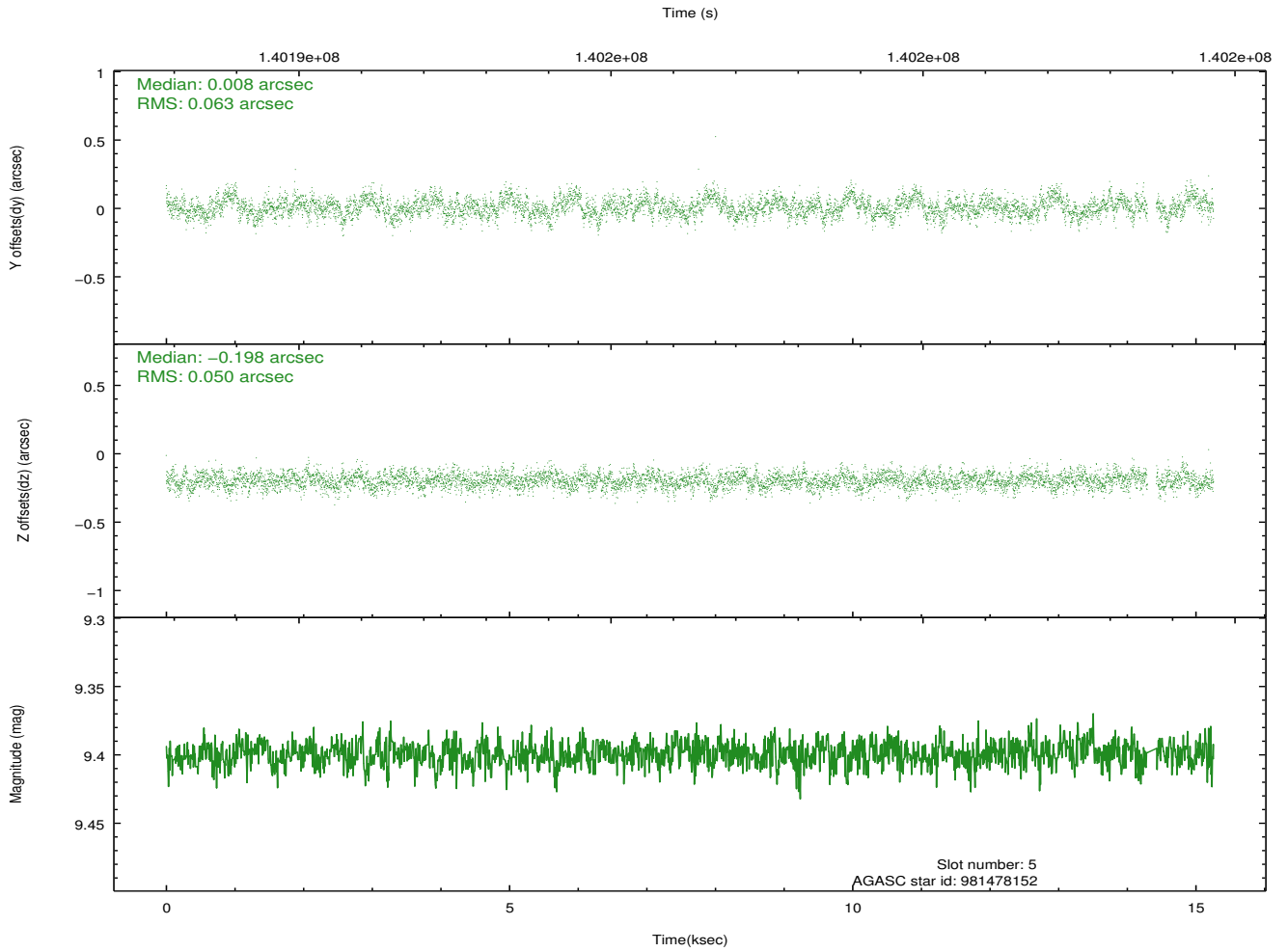
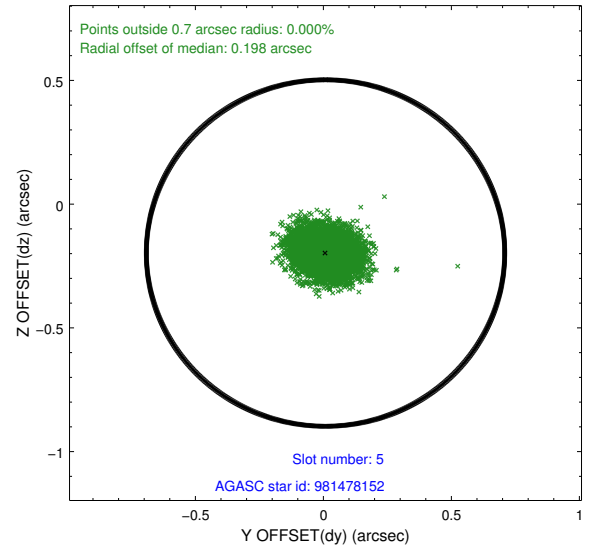
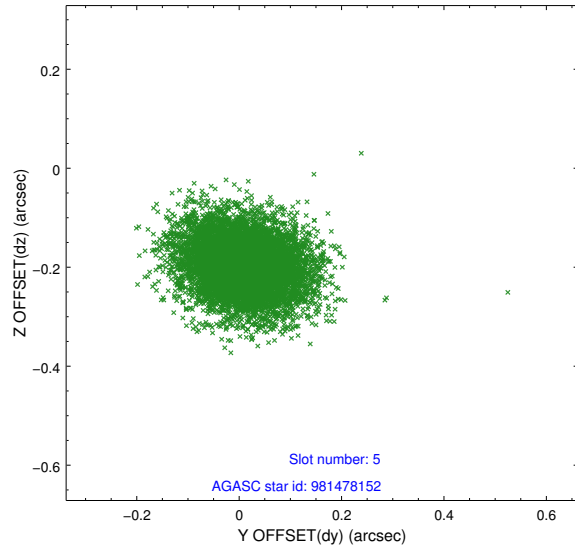
2.4.1 Slot 3



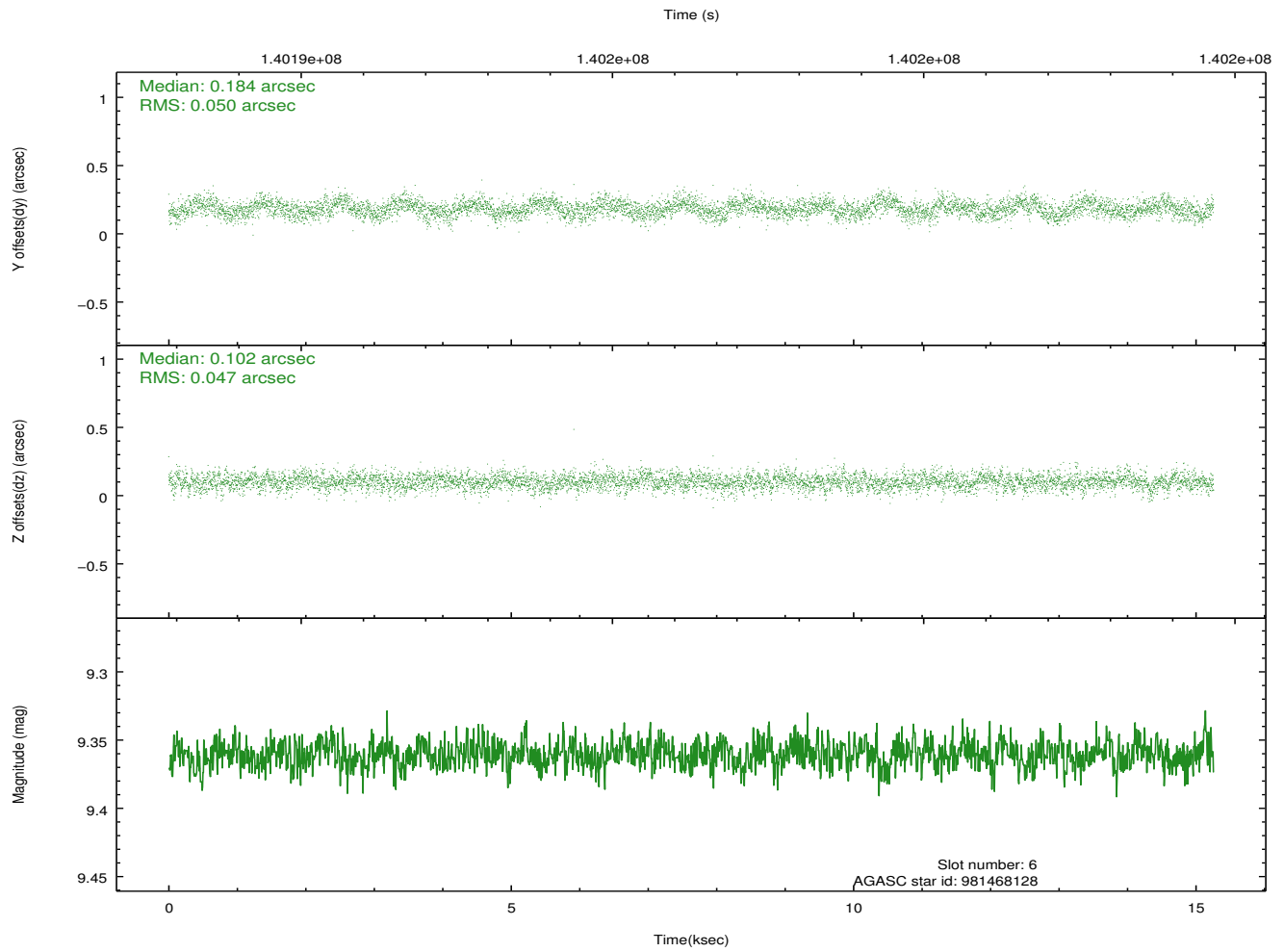
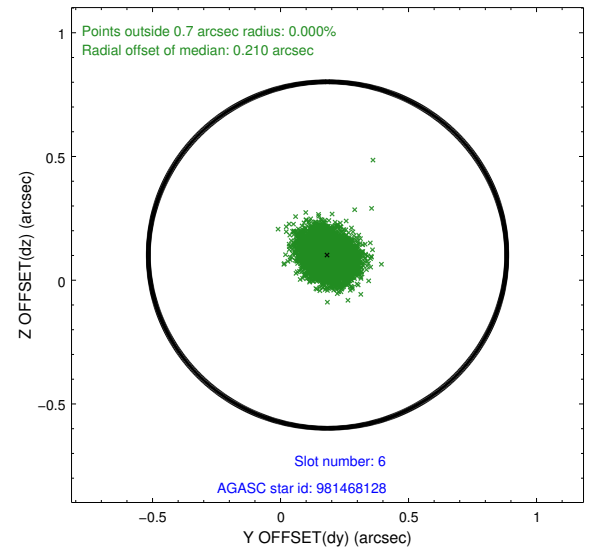
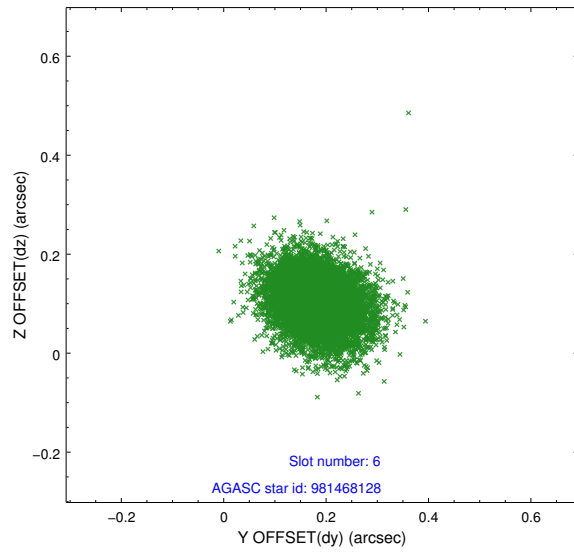
2.4.2 Slot 4



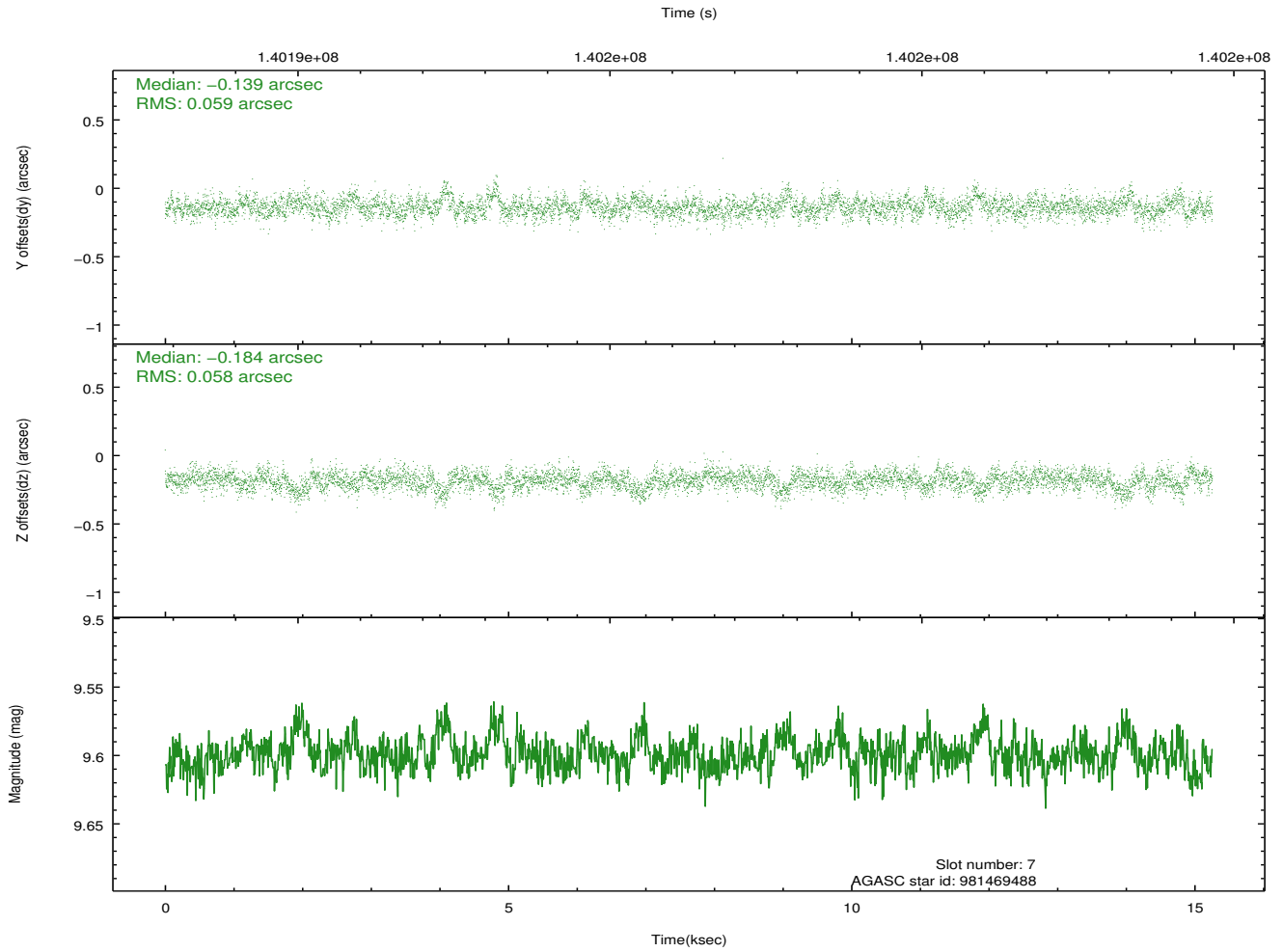
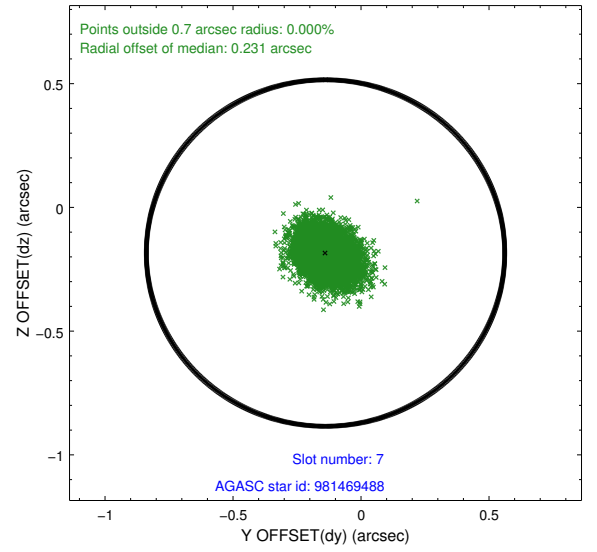
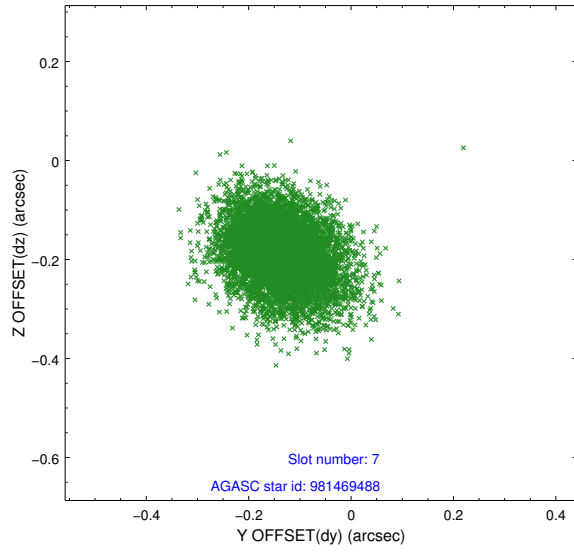
2.4.3 Slot 5



2.4.4 Slot 6

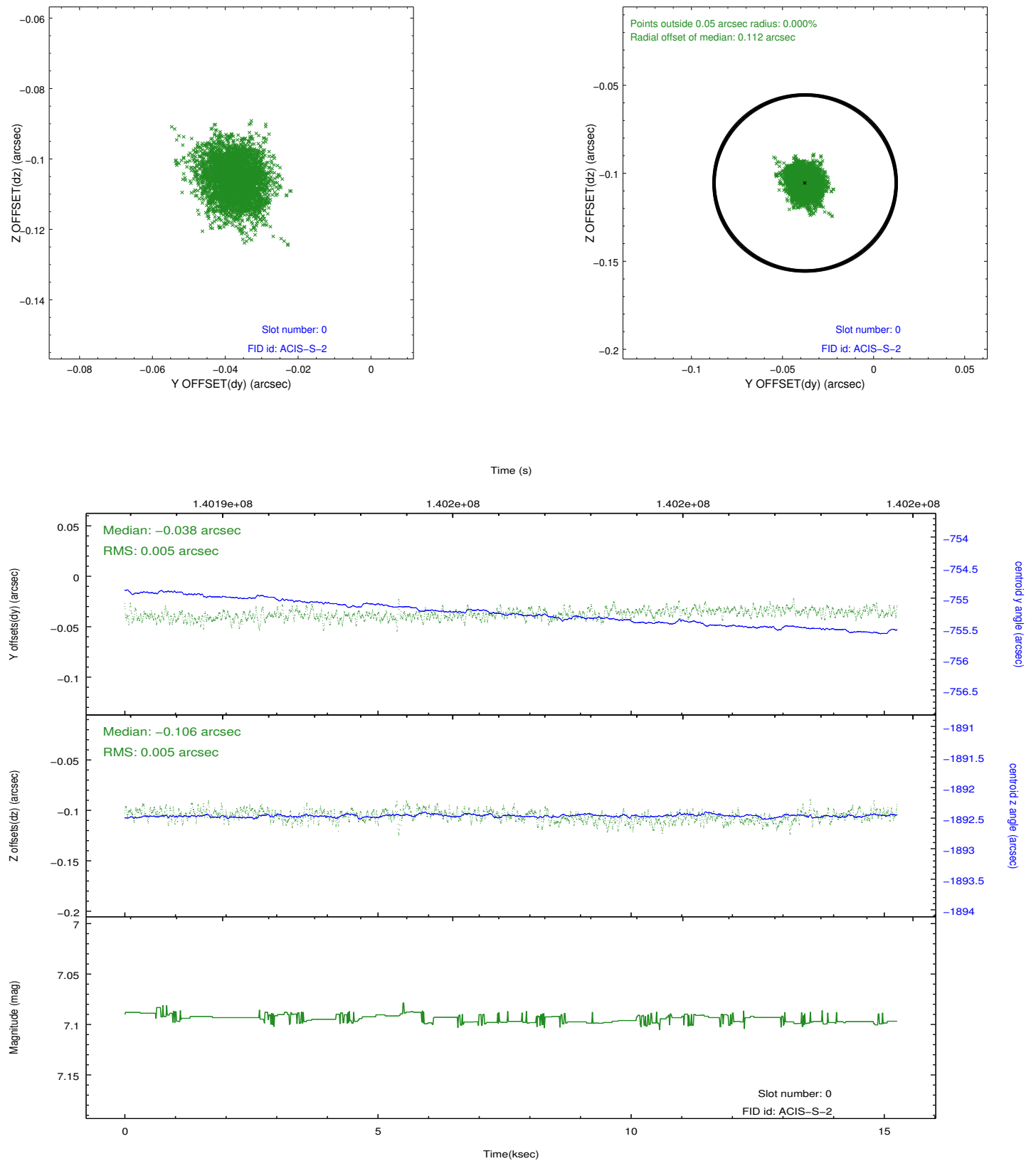


2.4.5 Slot 7

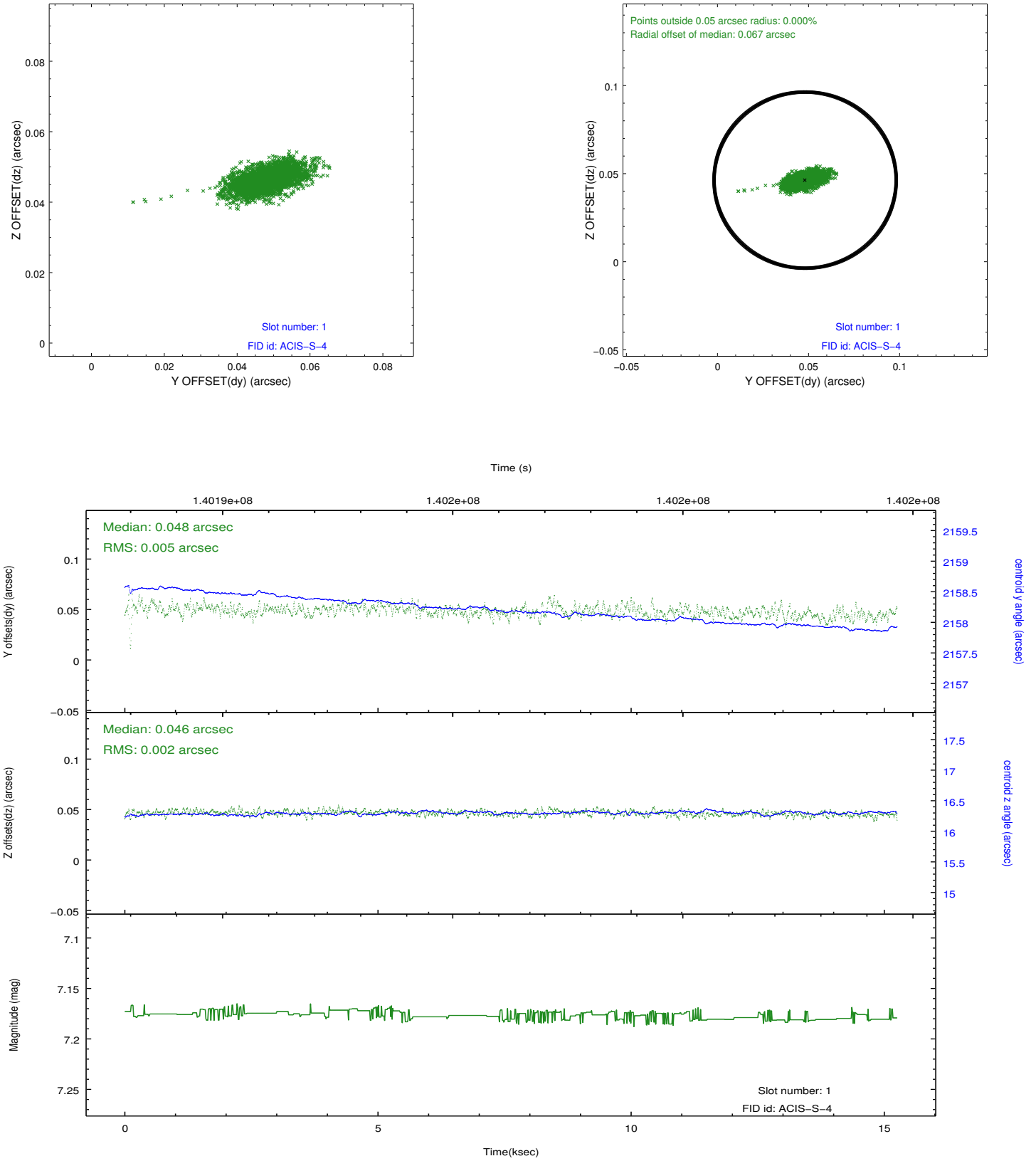


2.5 FID Slots

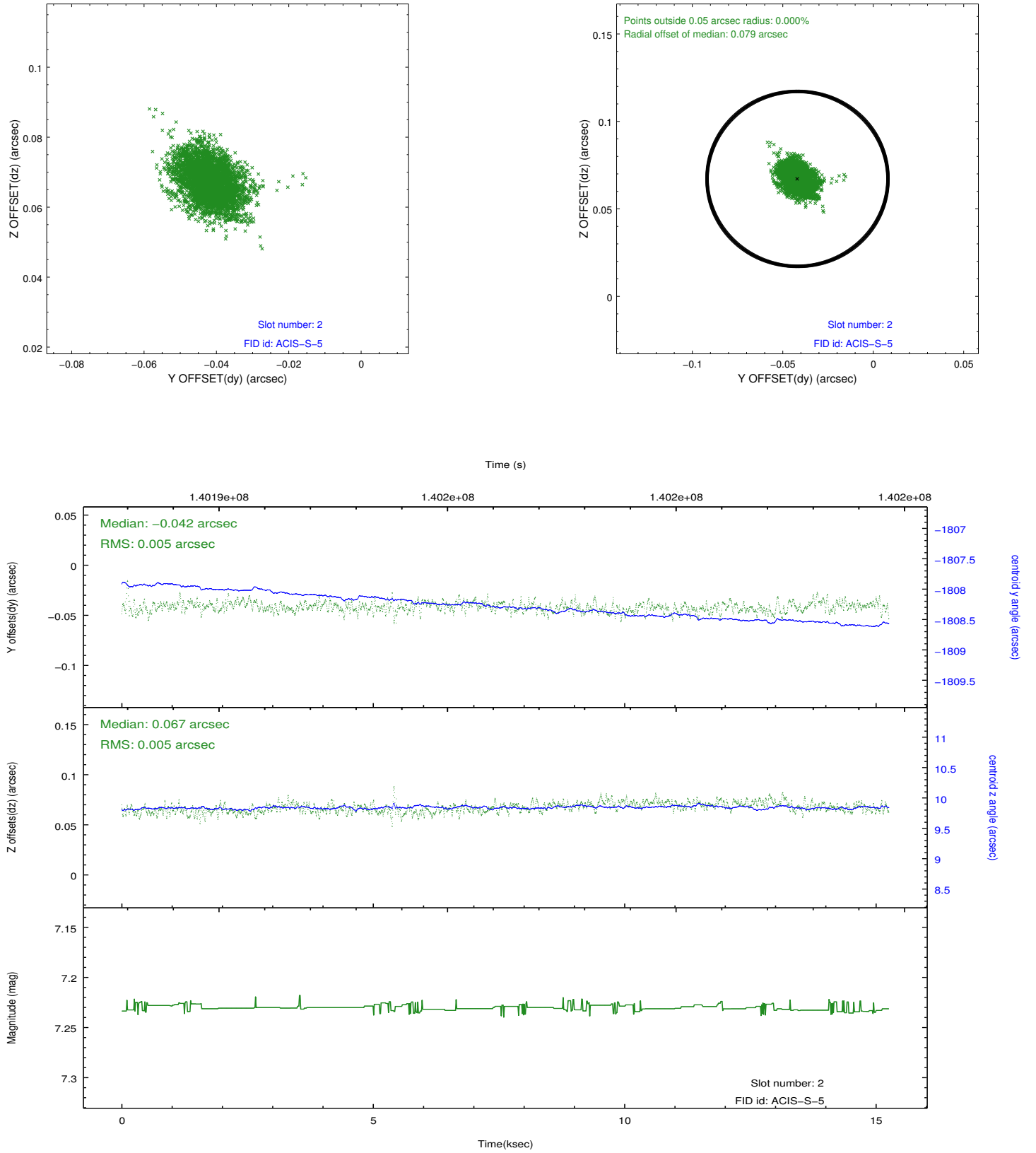
2.5.1 Slot 0



2.5.2 Slot 1

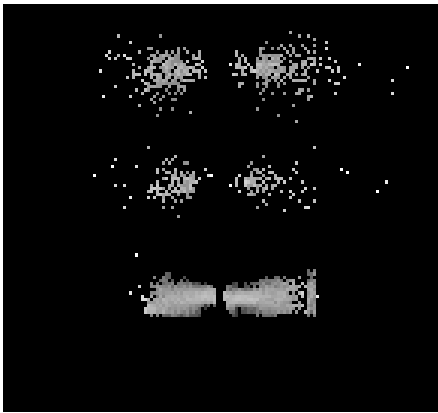


2.5.3 Slot 2

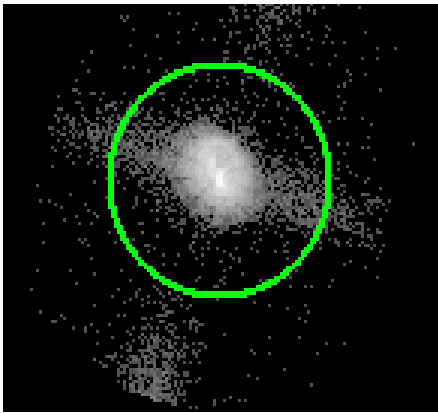


3 Gratings

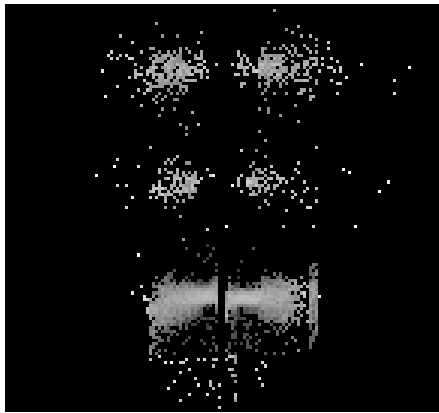
3.1 LETG Arm



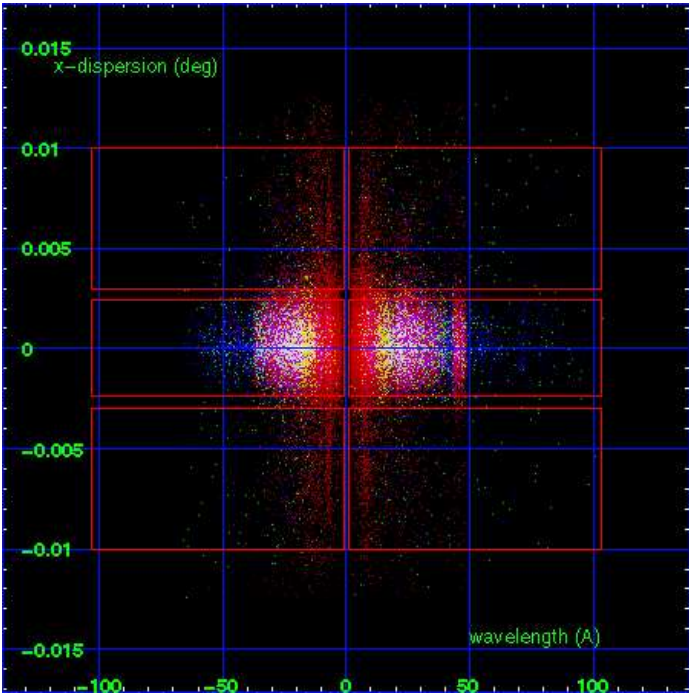
LETG Order Sort 123



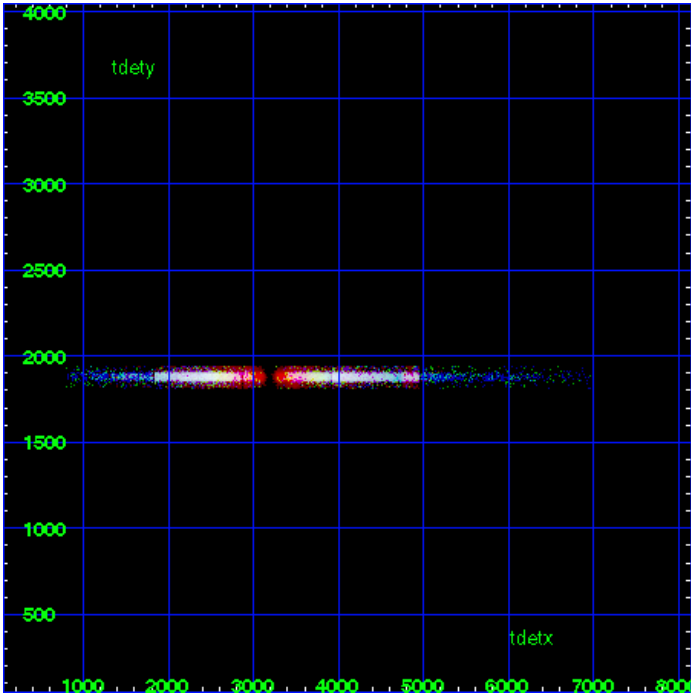
LETG Zero Order



LETG Order Sort ALL

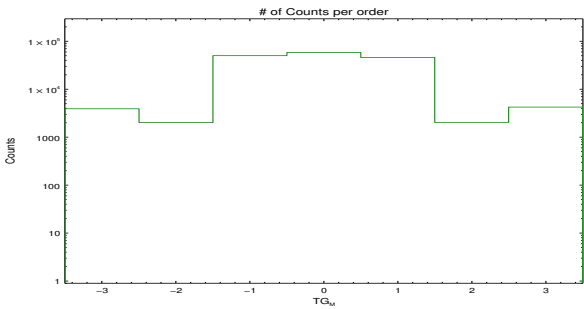


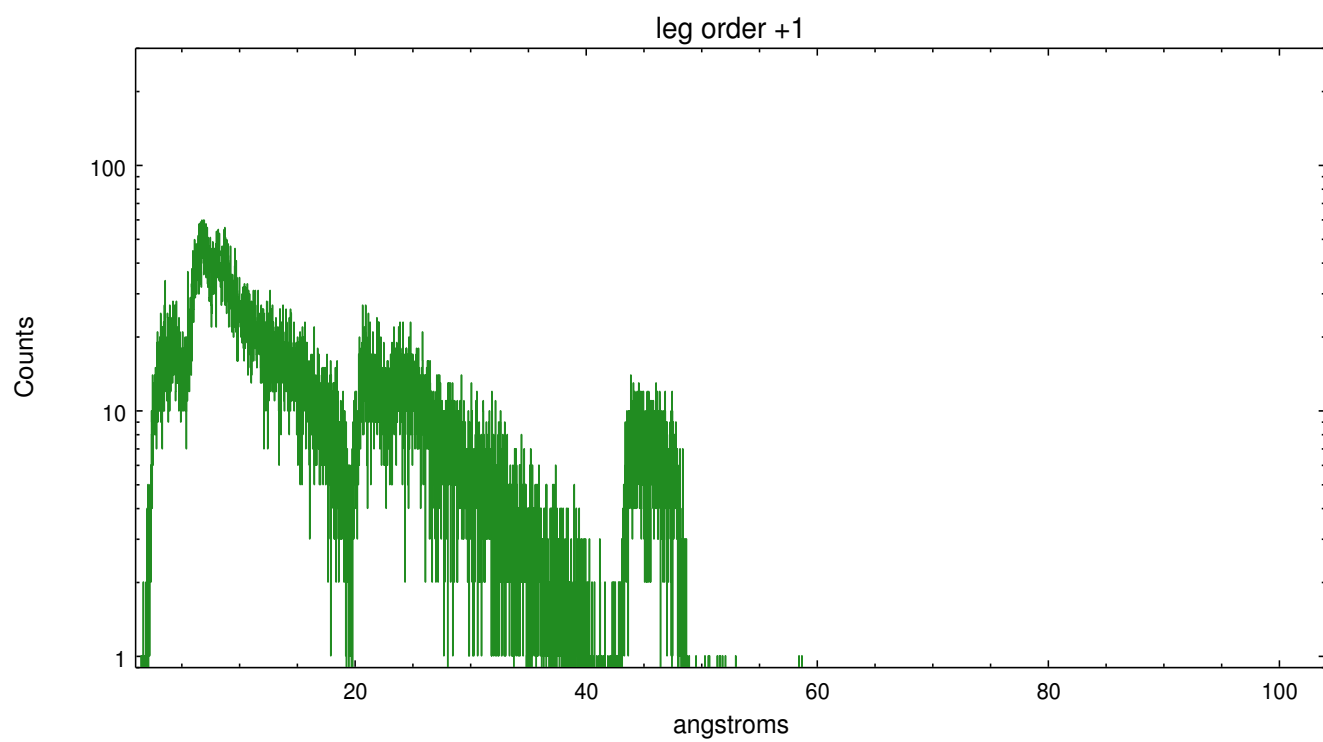
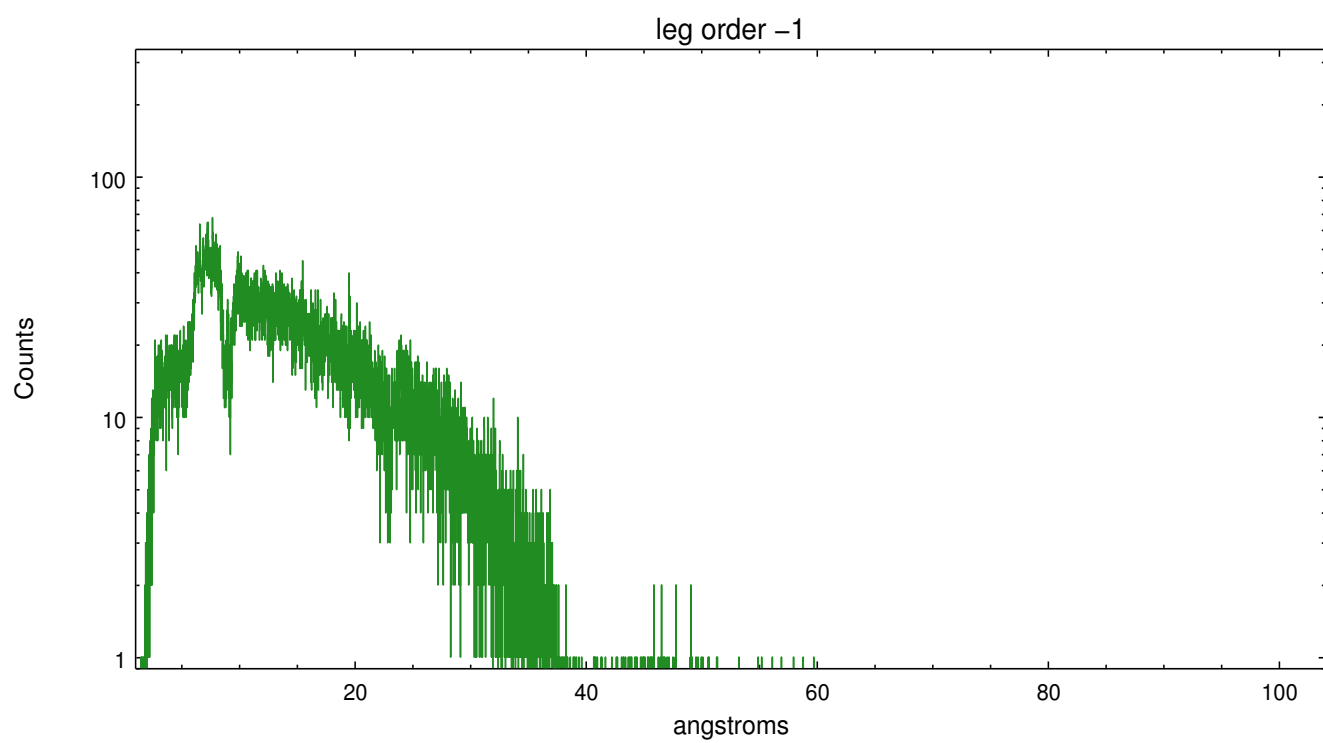
Spot Image LETG



Full Detector LETG

	order -3	order -2	order -1	order 0	order 1	order 2	order 3
Events	3933	2031	50608	58830	46183	2044	4261





A Summary

A.1 Status

V&V Scientist	David Huenemoerder
V&V Date (YYYY-MM-DD)	2013.03.28
V&V Edition	1
V&V Disposition and Status	OK
V&V Charge Time	15.012

A.2 Comments

warning: far off-axis source; there is no grating line spread function calibration (grating rmf) off-axis.