

V&V Reference Report

L2 ASCDS Version : 7.6.9

Observation 3474 - L2 Version 001
Chandra X-Ray Center

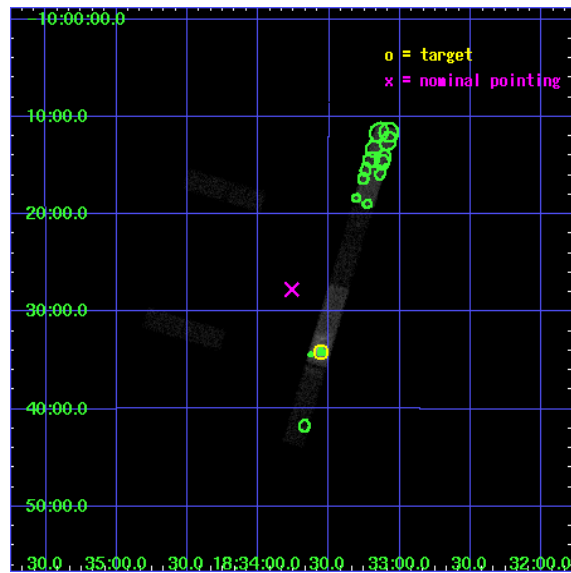
L2 Processing Date : Sep 16 2006

Contents

1	Front	2
2	OBI	3
2.1	OBI	3
2.1.1	Images	3
2.1.2	Bias	3
2.1.3	Parameters	4
2.1.4	Events	4
2.2	Compared Parameters	5
2.3	Aspect	6
2.4	Star Slots	9
2.4.1	Slot 3	9
2.4.2	Slot 4	10
2.4.3	Slot 5	11
2.4.4	Slot 6	12
2.4.5	Slot 7	13
2.5	FID Slots	14
2.5.1	Slot 0	14
2.5.2	Slot 1	15
2.5.3	Slot 2	16
3	Point Sources	17
A	Summary	18
A.1	Status	18
A.2	Comments	18

1 Front

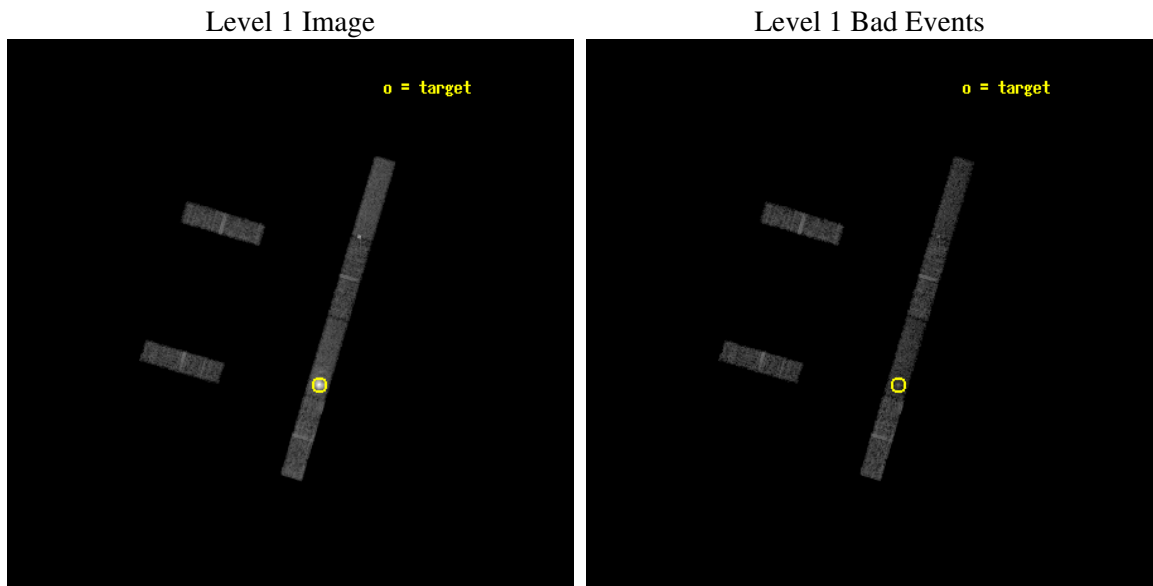
seq_num	590273
obs_id	3474
title	AO3A CALIBRATION OBSERVATIONS THE STANDARD CANDLES CAS A AND G21.5-09
observer	Dr. CXC Calibration
object	G21.5-0.9 [Chip S3, T=120, Offsets=-1,0,0]
dtcycle	0
cycle	P
ra_targ	278.389583
dec_targ	-10.568528
ra_nom	278.44060517316
dec_nom	-10.462411192013
roll_nom	106.70724938913
revision	2
ontime	9624.9999478459
livetime	9278.815766871
ontime2	9624.9999478459
ontime3	9624.9999478459
ontime5	9624.9999478459
ontime6	9624.9999478459
ontime7	9624.9999478459
ontime8	9624.9999478459
l2events	53890



2 OBI

2.1 OBI

2.1.1 Images



2.1.2 Bias

Chip 2

Chip 3

Chip 5



Chip 6

Chip 7

Chip 8



2.1.3 Parameters

obi_num	1
ascdsver	7.6.9
caldsver	3.2.3
date	2006-09-16T14:01:00
revision	2

sched_exp_time	9500.000000
ontime	10361.661592841
ontime2	10361.661592841
ontime3	10362.802632838
ontime5	10362.802632838
ontime6	10362.802632838
ontime7	10361.661592841
ontime8	10362.802632838
l1events	158890

2.1.4 Events

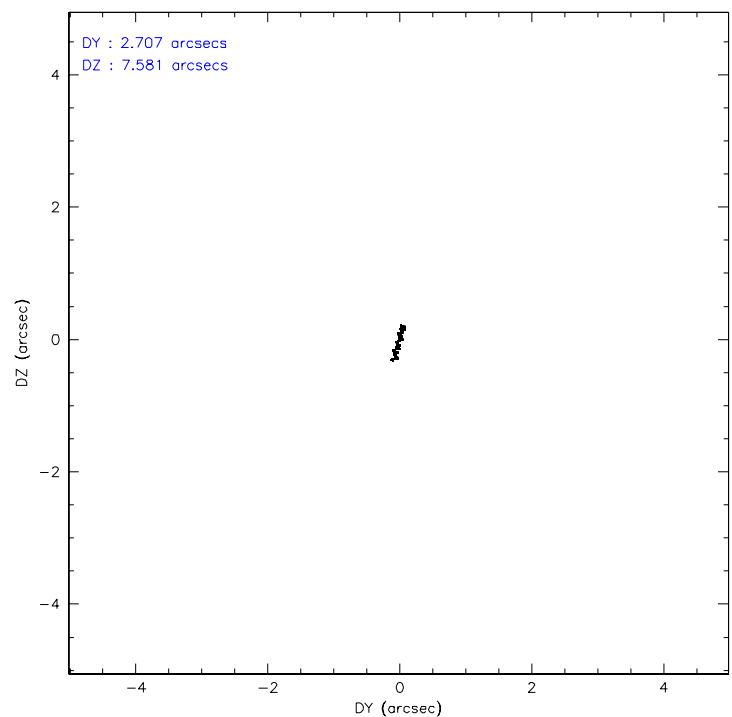
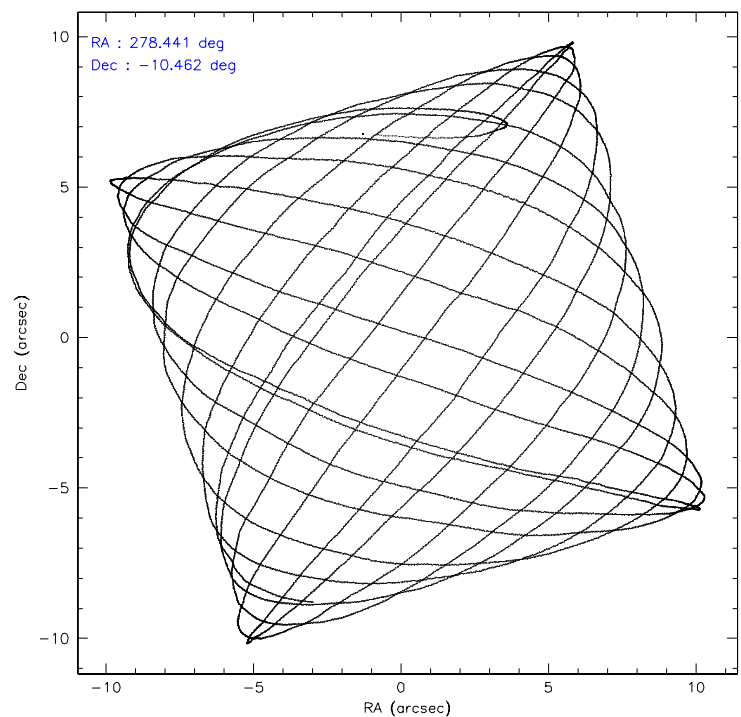
	ccd 2	ccd 3	ccd 5	ccd 6	ccd 7	ccd 8
level 1 events	20261	18117	24870	19182	50177	26283
rejected events	18187	16141	13946	16913	13331	21032
rejected %	89%	89%	56%	88%	26%	80%

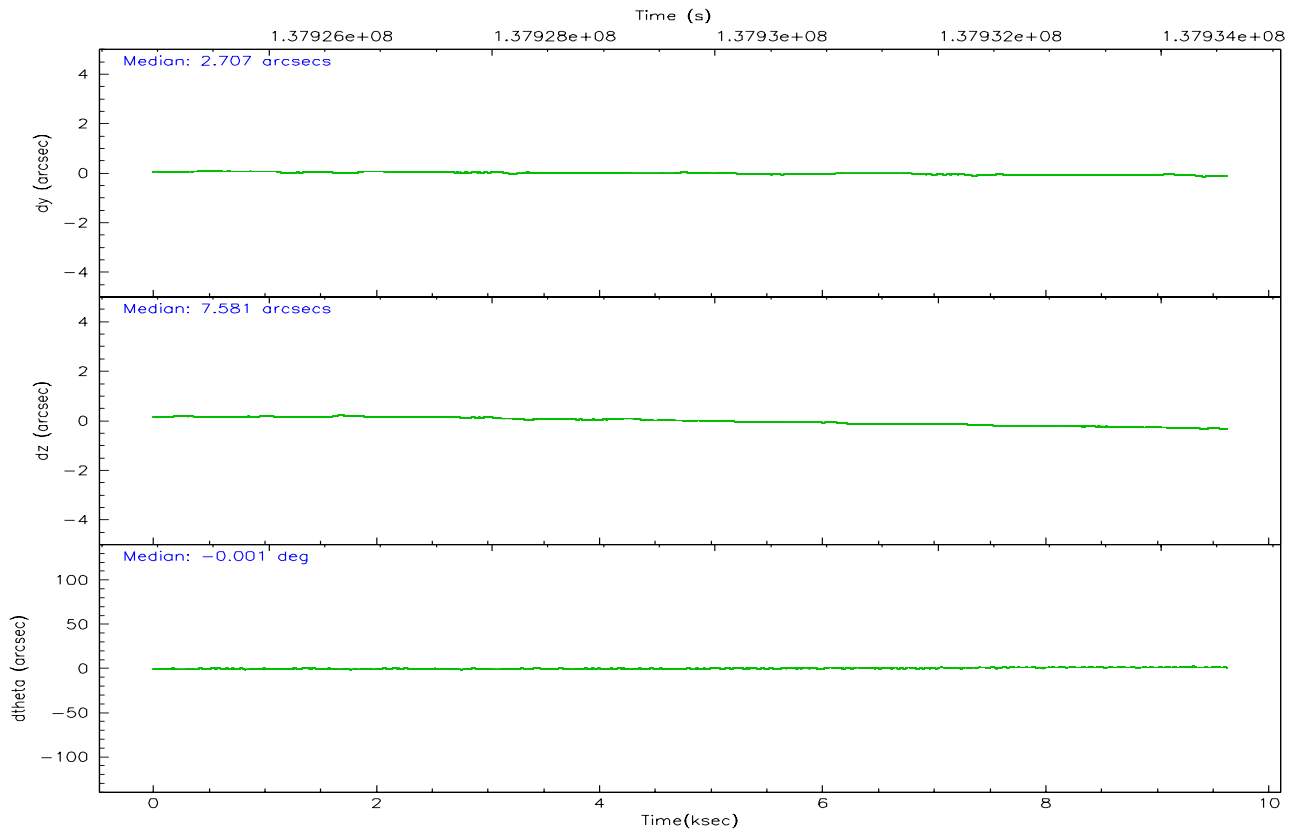
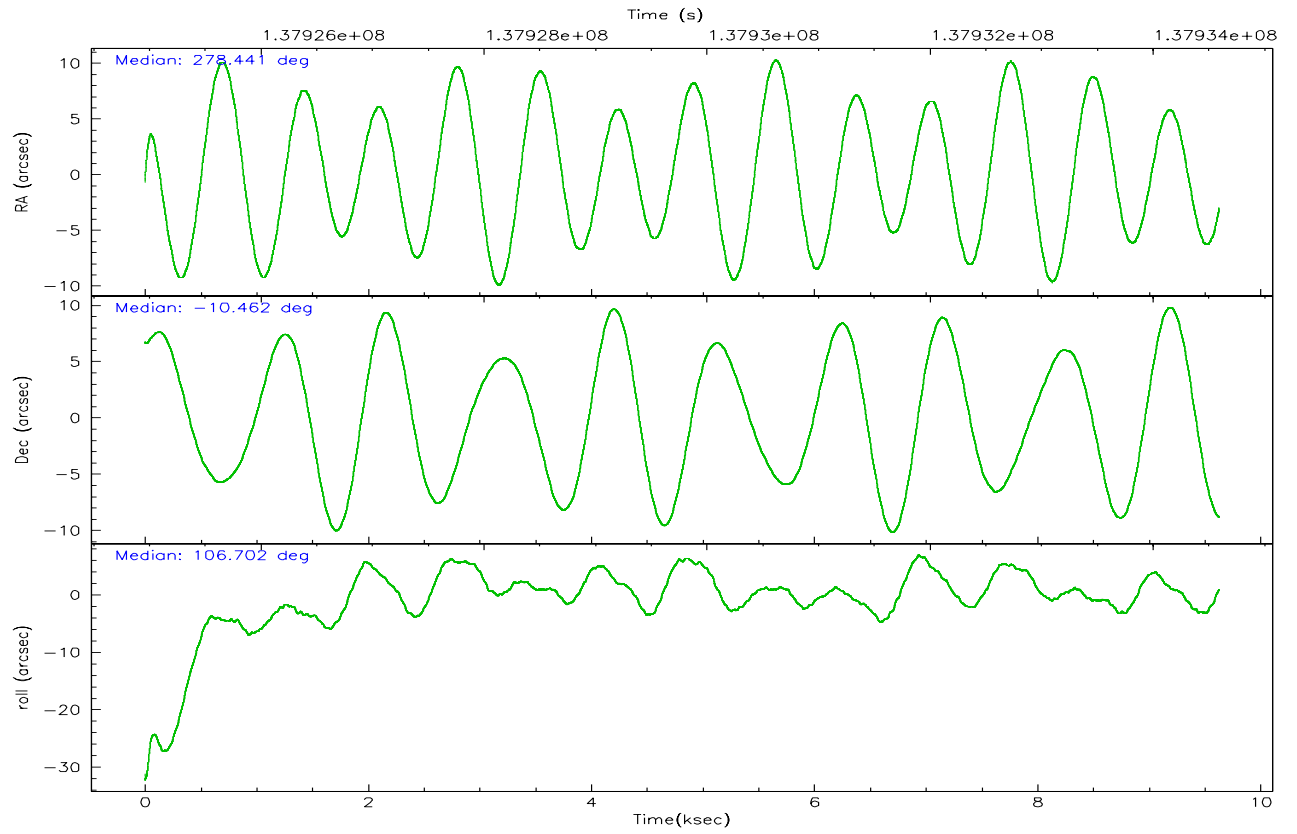
	ccd 2	ccd 3	ccd 5	ccd 6	ccd 7	ccd 8
grade 0 events	889	813	1454	999	6132	1881
	4%	4%	5%	5%	12%	7%
grade 1 events	4	10	177	5	24	6
	0%	0%	0%	0%	0%	0%
grade 2 events	389	357	3332	405	9294	1042
	1%	1%	13%	2%	18%	3%
grade 3 events	304	295	646	319	4023	662
	1%	1%	2%	1%	8%	2%
grade 4 events	288	300	666	304	3907	653
	1%	1%	2%	1%	7%	2%
grade 5 events	583	584	1514	665	1870	875
	2%	3%	6%	3%	3%	3%
grade 6 events	355	360	5888	403	14592	1378
	1%	1%	23%	2%	29%	5%
grade 7 events	17449	15398	11193	16082	10335	19786
	86%	84%	45%	83%	20%	75%

2.2 Compared Parameters

Parameter	Planned	Actual	Parameter	Planned	Actual
Instrument	ACIS	ACIS	Obspar format version number	6	6
Detector	ACIS-235678	ACIS-235678	Obspar file type	PREDICTED	ACTUAL
Grating	NONE	NONE	Obspar update status	NONE	UPDATED
Data mode	FAINT	FAINT	Number of optional ACIS chips dropped	0	0
Observation mode	POINTING	POINTING	On-chip summing requested	N	N
Pointing RA	278.461064	278.440605173158	Subarray requested	CUSTOM	1/4
Pointing Dec	-10.480884	-10.46241119201275	Subarray start row	1	1
Pointing Roll	106.554352	106.7072493891285	Subarray row count	256	256
Window start time	135216064.184000	135216064.184000	Alternating exposures requested	N	N
Window stop time	139190464.184000	139190464.184000	Primary exposure time	0.000000	1.1
SIM focus pos (mm)	-0.684267	-0.6828225247311905			
SIM defocus (mm)	0	0.001444936568705701			
SIM translation stage pos (mm)	-194.422523	-194.4244593237301			
SIM translation stage offset (mm)	4.29	4.291936740722321			
Observation start time	137925085.184000	137923966.54769			
Observation start date	2002-05-16T08:30:21	2002-05-16T08:12:46			
Observation end time	137934585.184000	137935468.07316			
Observation end date	2002-05-16T11:08:41	2002-05-16T11:24:28			
Read mode	TIMED	TIMED			

2.3 Aspect



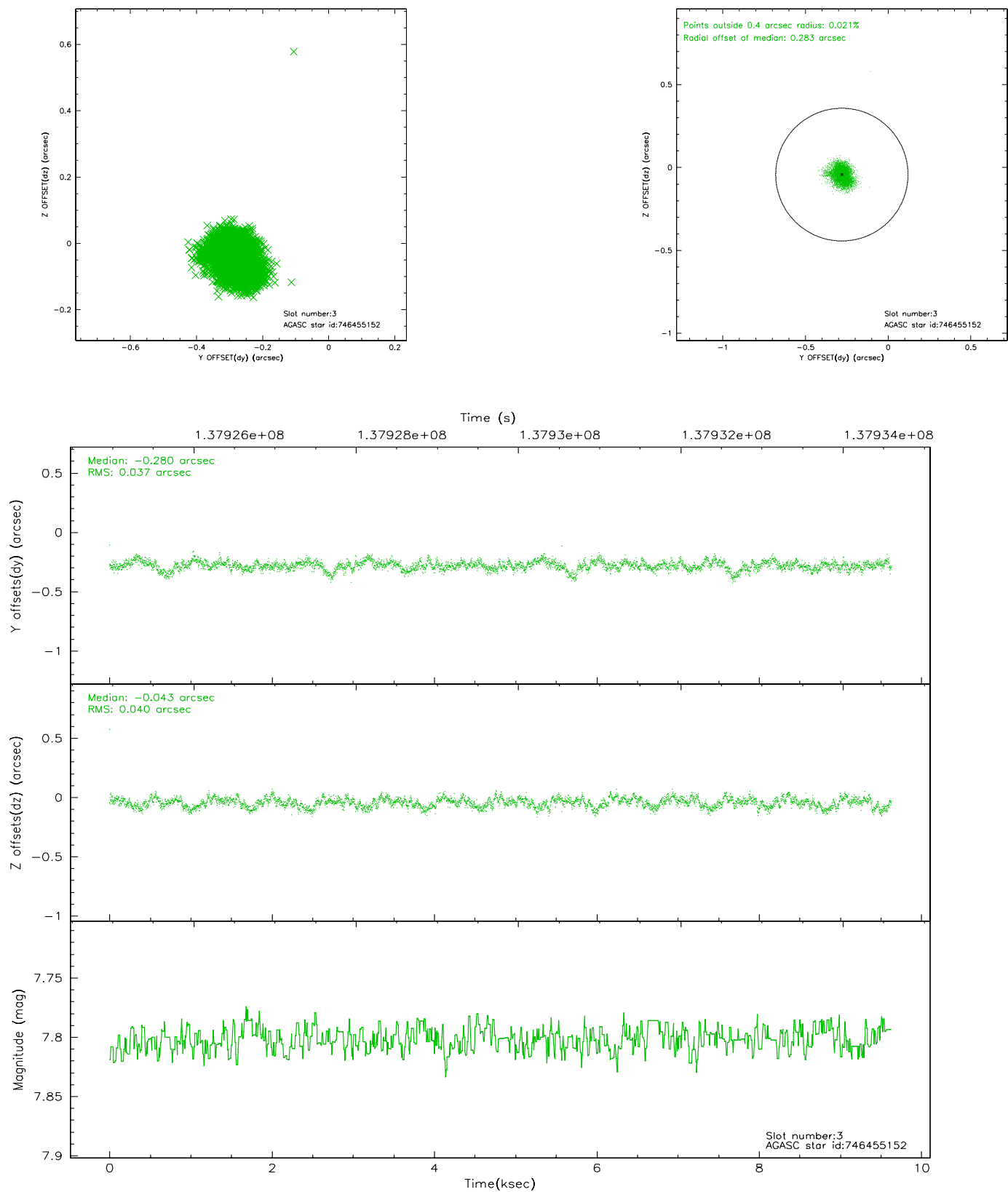


Slot Statistics

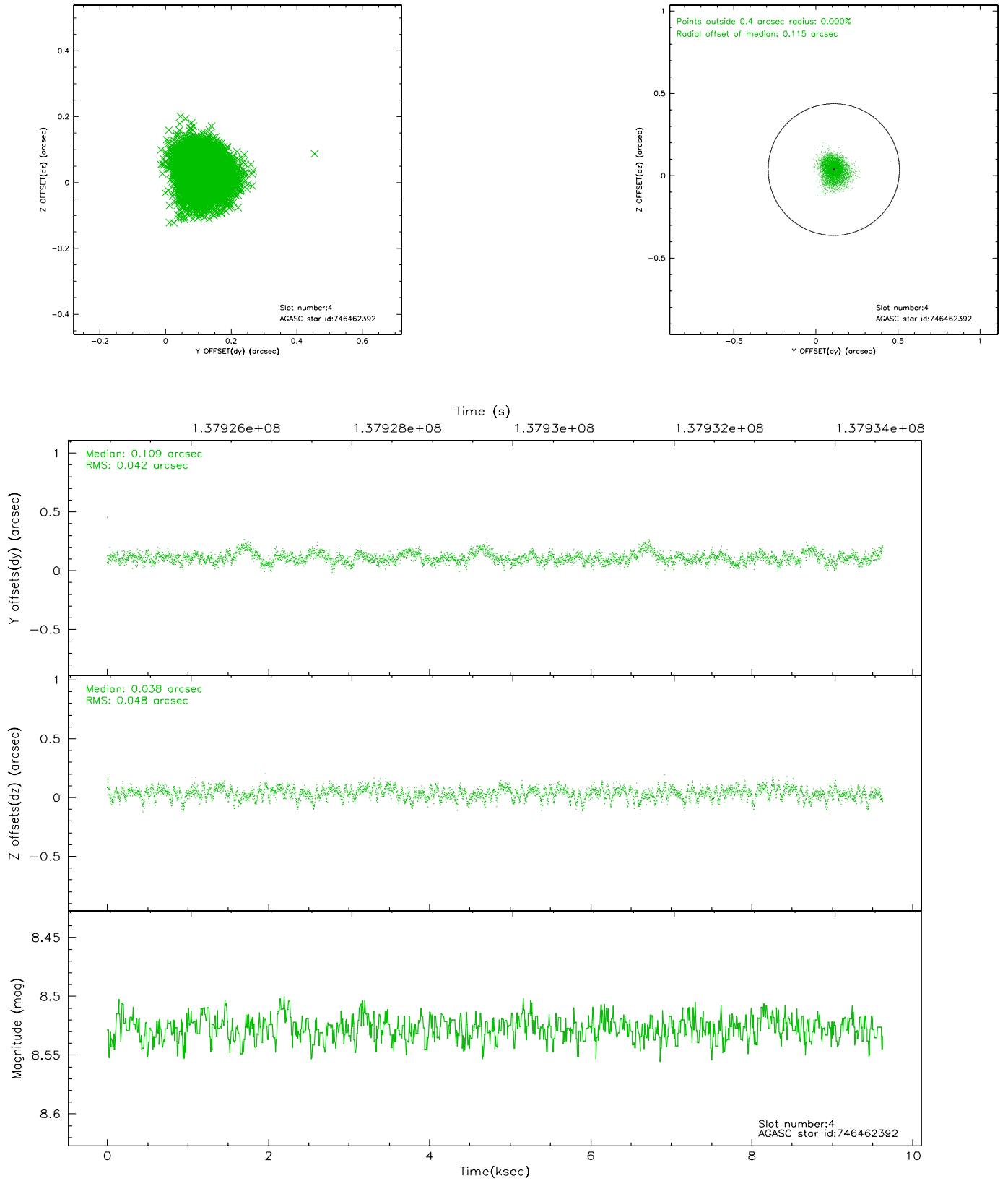
slot	status	id	mag	n_pts	med_dy	med_dz	dr1	dr2	ra	dec	mean_y	mean_z
0	FID	ACIS-S-3	7.36	2348	-0.060	0.036	0.012	0.019	0.000000	0.000000	57.45	-1769.45
1	FID	ACIS-S-4	7.20	2348	-0.009	0.015	0.007	0.011	0.000000	0.000000	2157.77	267.39
2	FID	ACIS-S-5	7.24	2349	0.040	-0.041	0.009	0.014	0.000000	0.000000	-1807.68	261.87
3	GUIDE	746455152	7.80	4698	-0.280	-0.043	0.057	0.093	278.447893	-9.976732	1752.34	-472.58
4	GUIDE	746462392	8.53	4697	0.109	0.038	0.068	0.110	279.038421	-10.890715	-1998.00	-1536.31
5	GUIDE	746455112	8.93	4695	0.080	0.023	0.074	0.120	278.266531	-10.703234	-572.28	886.92
6	GUIDE	746460328	9.81	4688	-0.058	-0.005	0.131	0.212	278.603974	-9.898096	1865.86	-1083.48
7	GUIDE	746461728	9.77	4691	0.148	-0.012	0.097	0.160	278.986921	-10.530755	-703.66	-1733.08

2.4 Star Slots

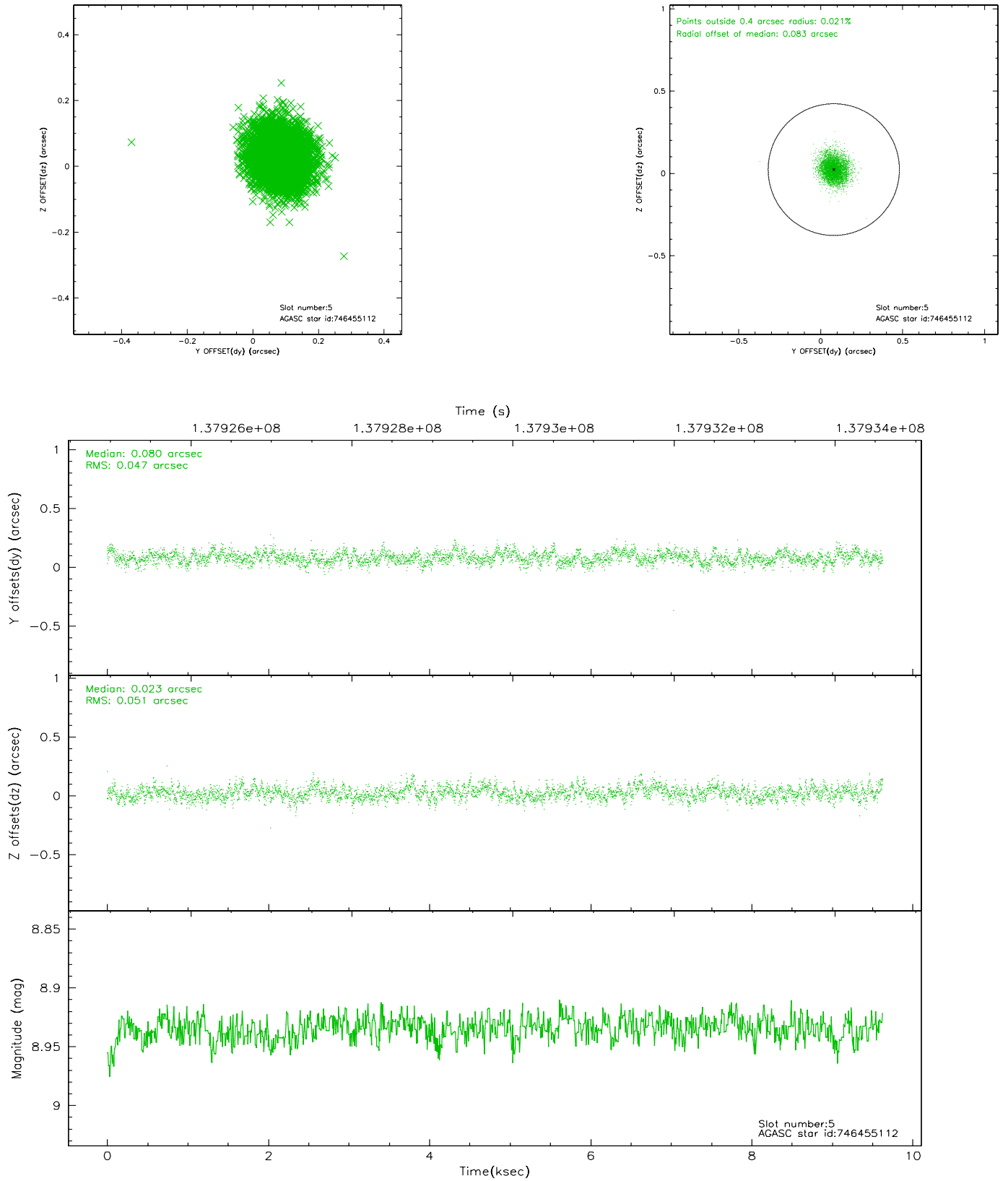
2.4.1 Slot 3



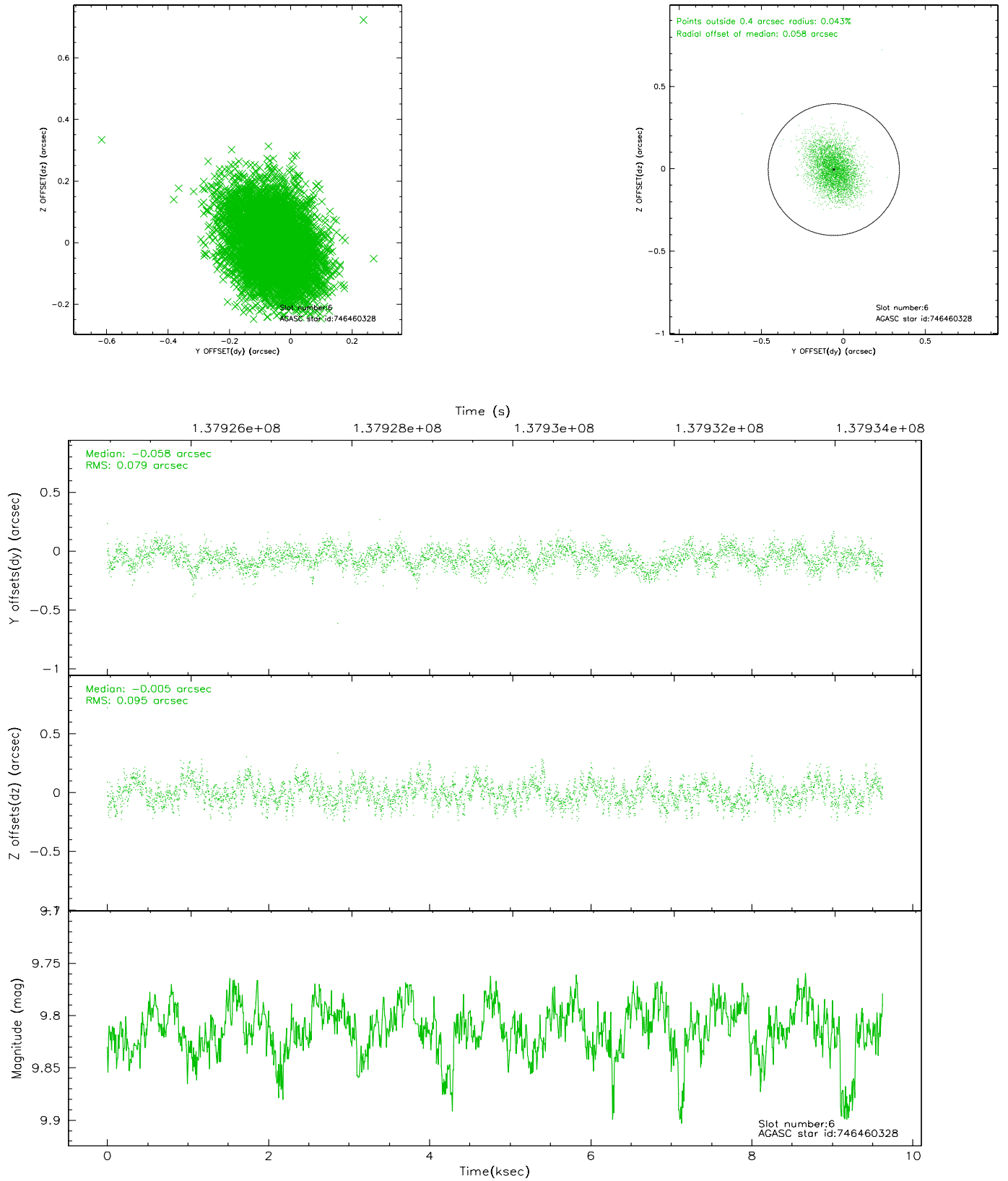
2.4.2 Slot 4



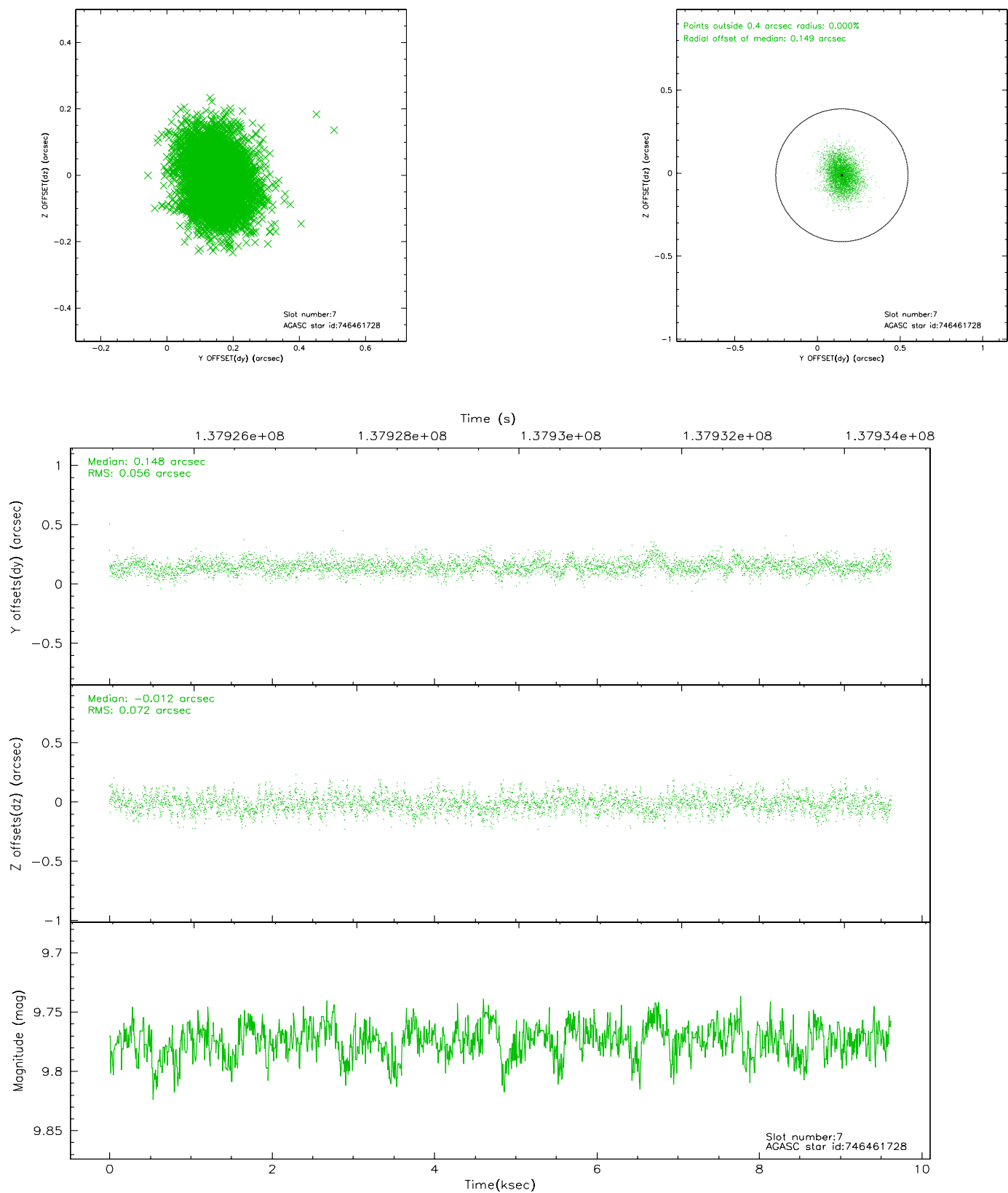
2.4.3 Slot 5



2.4.4 Slot 6

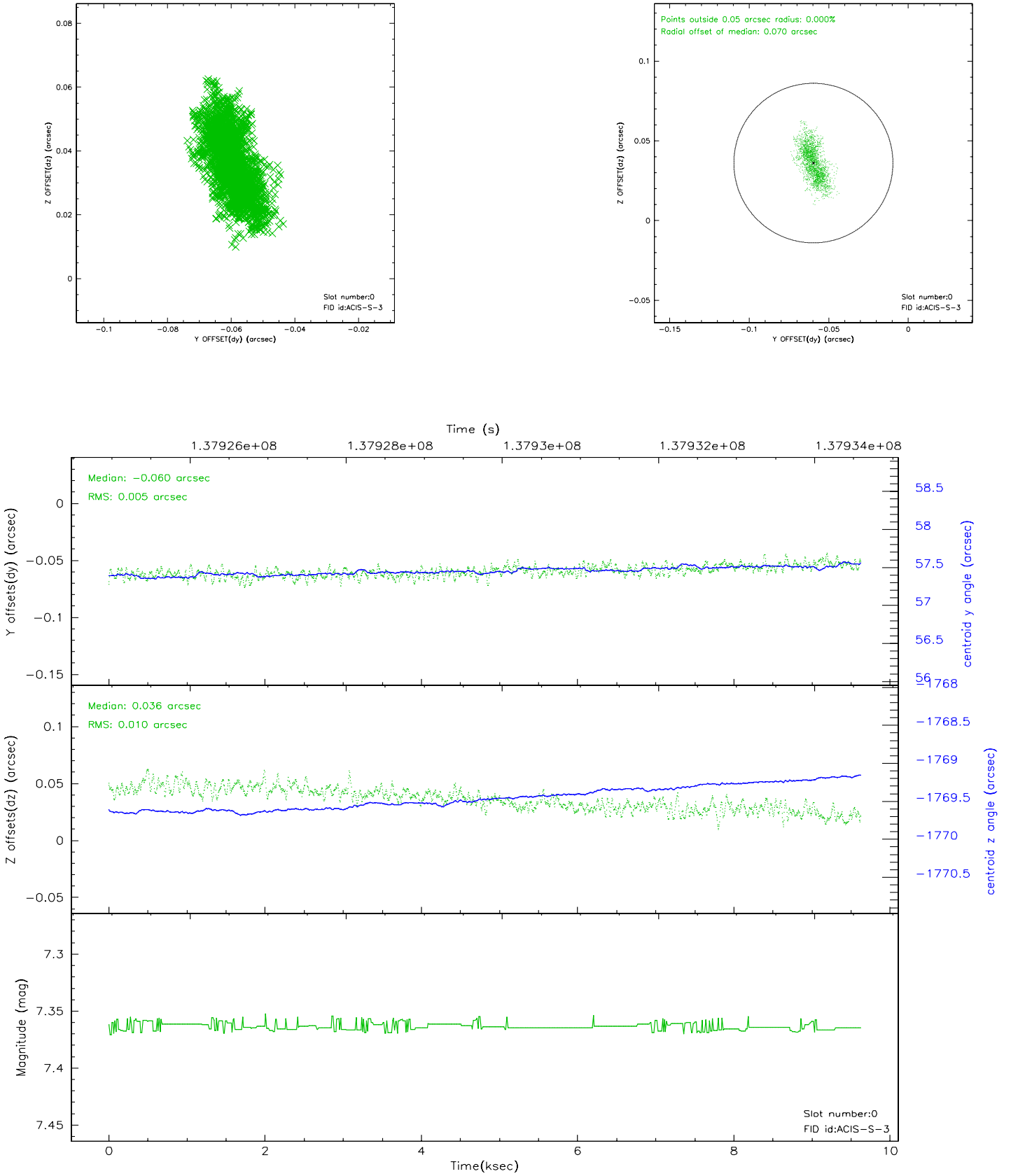


2.4.5 Slot 7

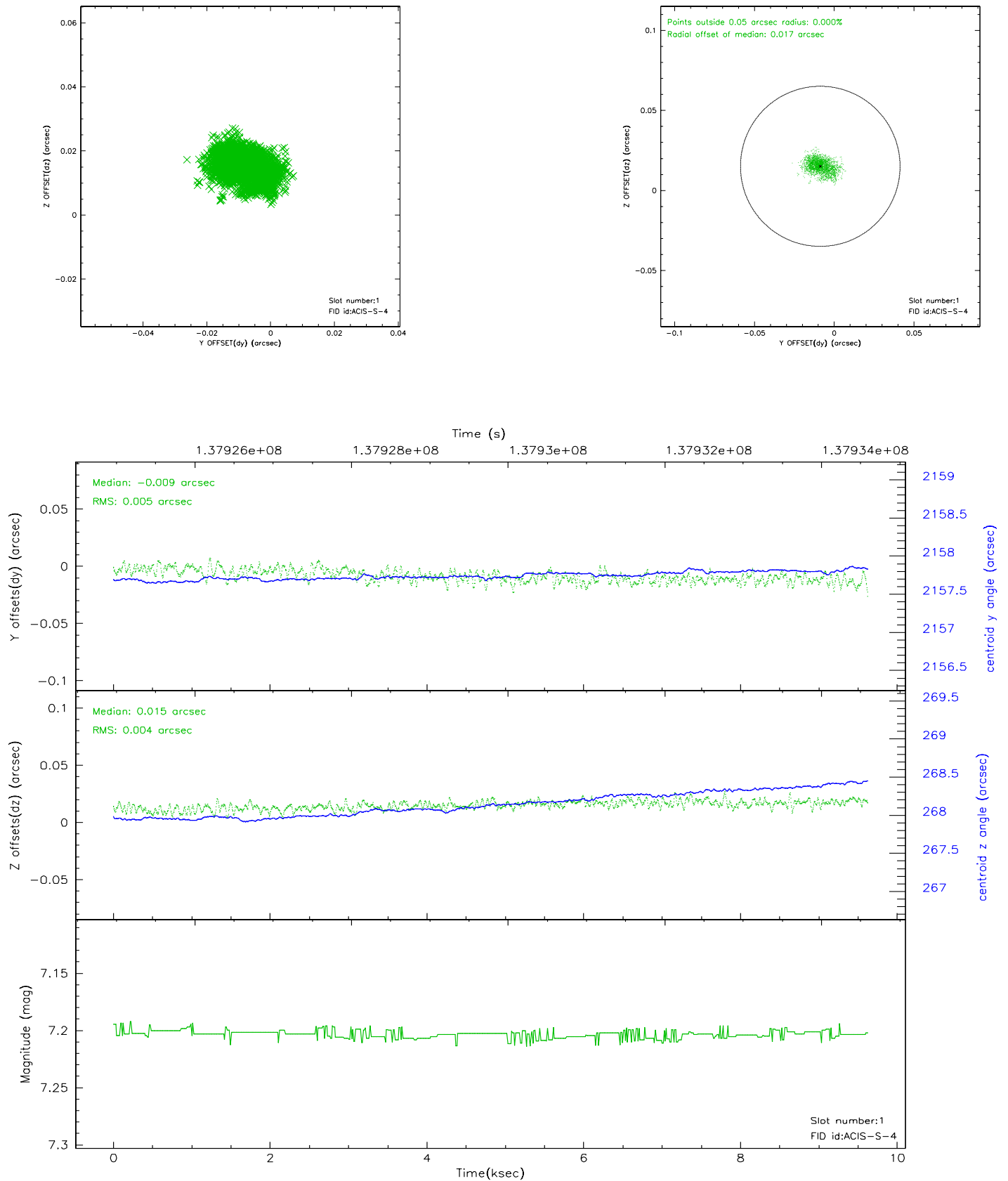


2.5 FID Slots

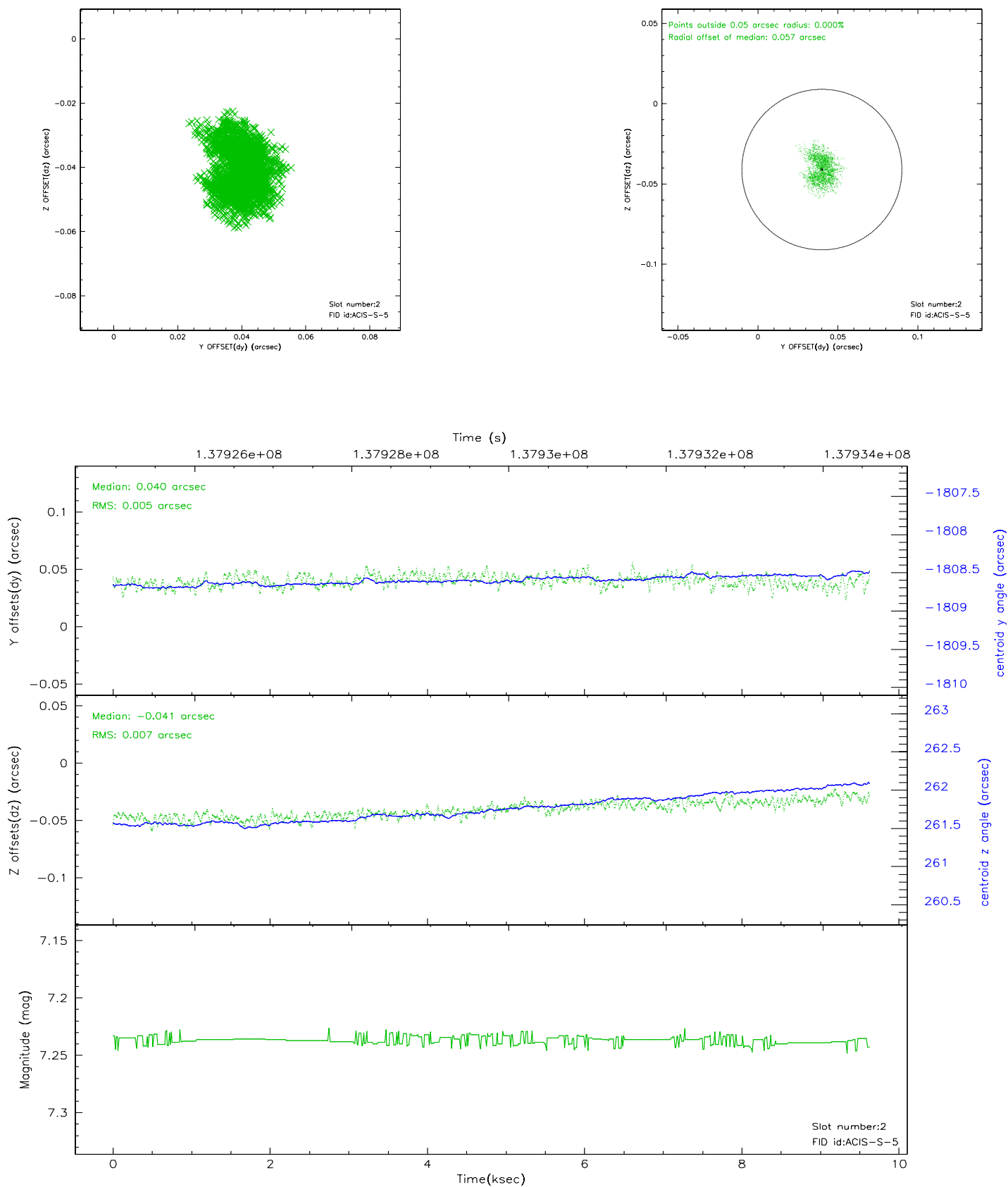
2.5.1 Slot 0



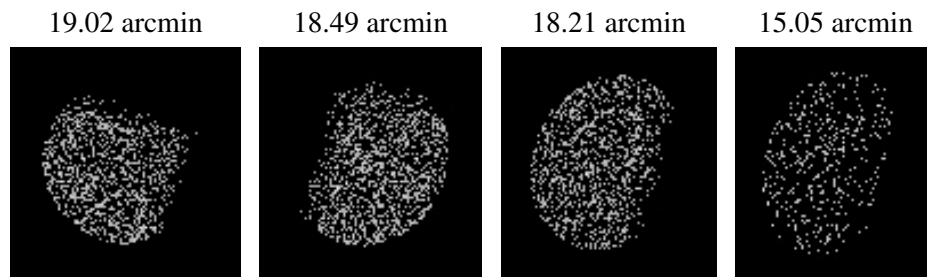
2.5.2 Slot 1



2.5.3 Slot 2



3 Point Sources



A Summary

A.1 Status

V&V Scientist	Doug Morgan
V&V Date (YYYY-MM-DD)	2006.09.17
V&V Edition	1
V&V Disposition and Status	OK
V&V Charge Time	9.625

A.2 Comments