

# V&V Reference Report

## L2 ASCDS Version : 8.4.5

Observation 2875 - L2 Version 3  
Chandra X-Ray Center

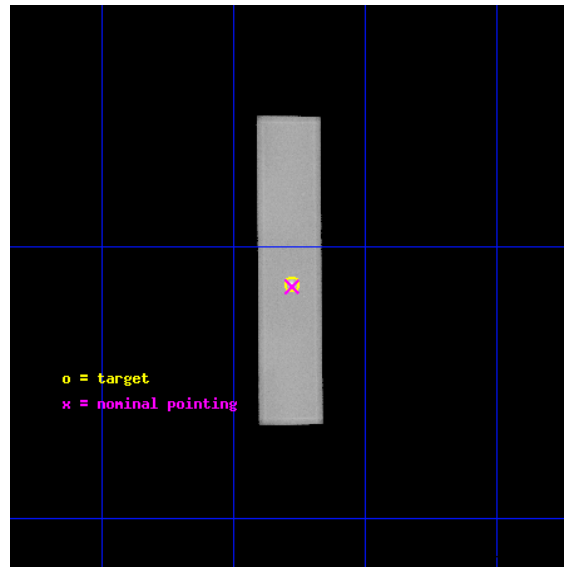
L2 Processing Date : Oct 14 2012

## Contents

<b>1</b>	<b>Front</b>	<b>2</b>
<b>2</b>	<b>OBI</b>	<b>3</b>
2.1	OBI . . . . .	3
2.1.1	Images . . . . .	3
2.1.2	Parameters . . . . .	4
2.1.3	Events . . . . .	4
2.2	Compared Parameters . . . . .	5
2.3	Aspect . . . . .	6
2.4	Star Slots . . . . .	9
2.4.1	Slot 3 . . . . .	9
2.4.2	Slot 4 . . . . .	10
2.4.3	Slot 5 . . . . .	11
2.4.4	Slot 6 . . . . .	12
2.4.5	Slot 7 . . . . .	13
2.5	FID Slots . . . . .	14
2.5.1	Slot 0 . . . . .	14
2.5.2	Slot 1 . . . . .	15
2.5.3	Slot 2 . . . . .	16
<b>A</b>	<b>Summary</b>	<b>17</b>
A.1	Status . . . . .	17
A.2	Comments . . . . .	17

# 1 Front

seq_num	590264	Sequence number
obs_id	2875	Observation id
title	AO3B CALIBRATION OBSERVATIONS THE STANDARD CANDLES CAS A AND G21.5-09	Proposal title
observer	Dr. CXC Calibration	Principal investigator
object	G21.5-0.9 [HRC-S, Offsets=0,0,0]	Source name
ra_targ	278.389583	Observer's specified target RA [deg]
dec_targ	-10.568528	Observer's specified target Dec [deg]
ra_nom	278.3893793429	Nominal RA [deg]
dec_nom	-10.573309916048	Nominal Dec [deg]
roll_nom	269.47598370114	Nominal Roll [deg]
revision	3	Processing version of data
ontime	19818.632068932	[s]
livetime	19705.611485993	Ontime multiplied by DTCOR
l2events	767573	Number of level 2 events

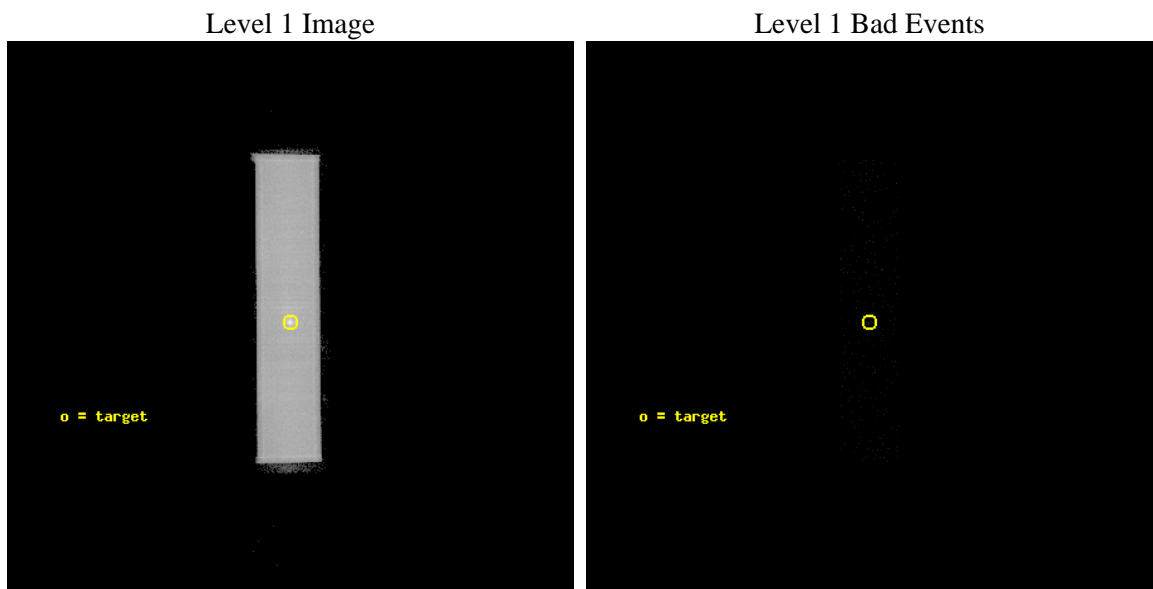




## 2 OBI

### 2.1 OBI

#### 2.1.1 Images



### 2.1.2 Parameters

obi_num	1	Obi number	sched_exp_time	20000.000000	[s] Scheduled observation exposure time
ascdsver	8.4.5	Processing system revision	ontime	19818.632068932	[s]
caldbver	4.5.2	&#160	l1events	937742	Number of level 1 events
date	2012-10-14T18:15:11	Date and time of file creation			
revision	3	Processing version of data			

### 2.1.3 Events

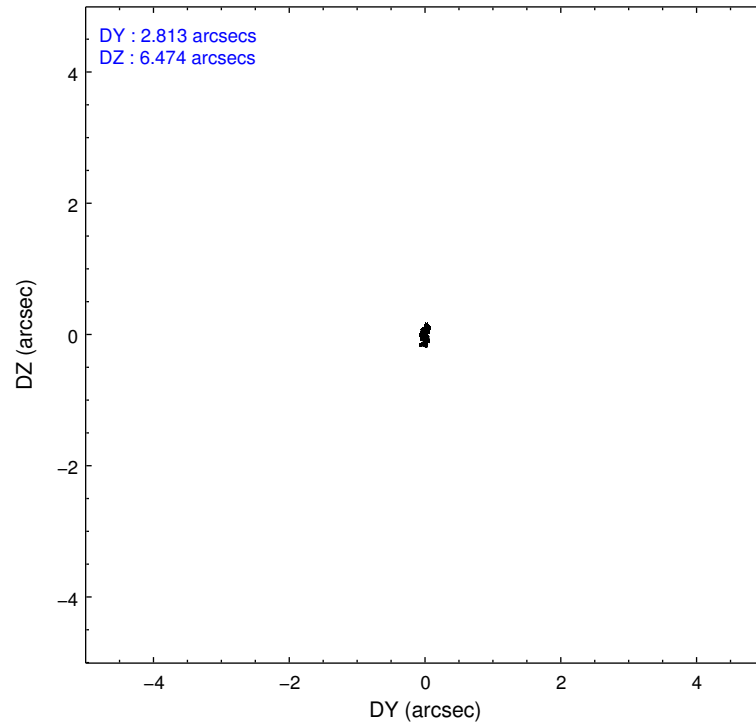
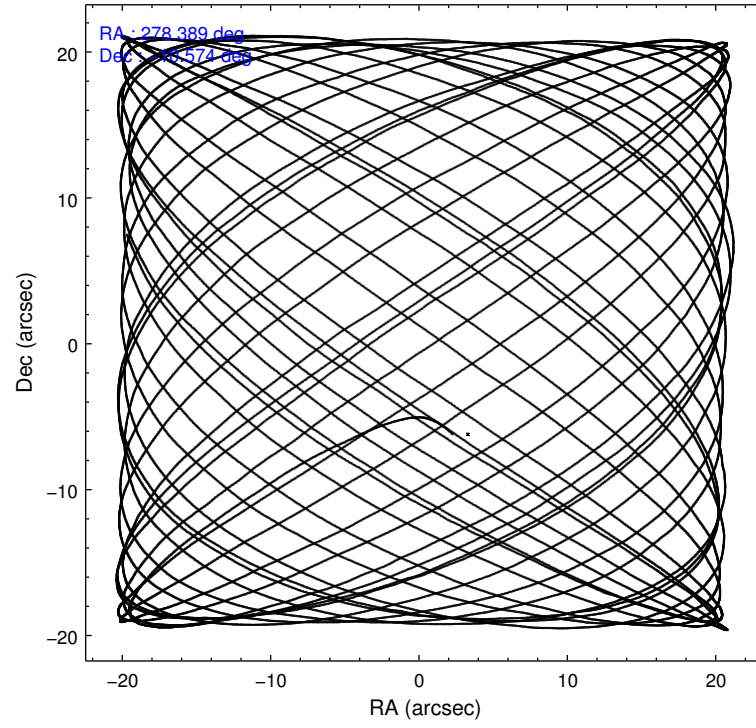
Level 1 Events

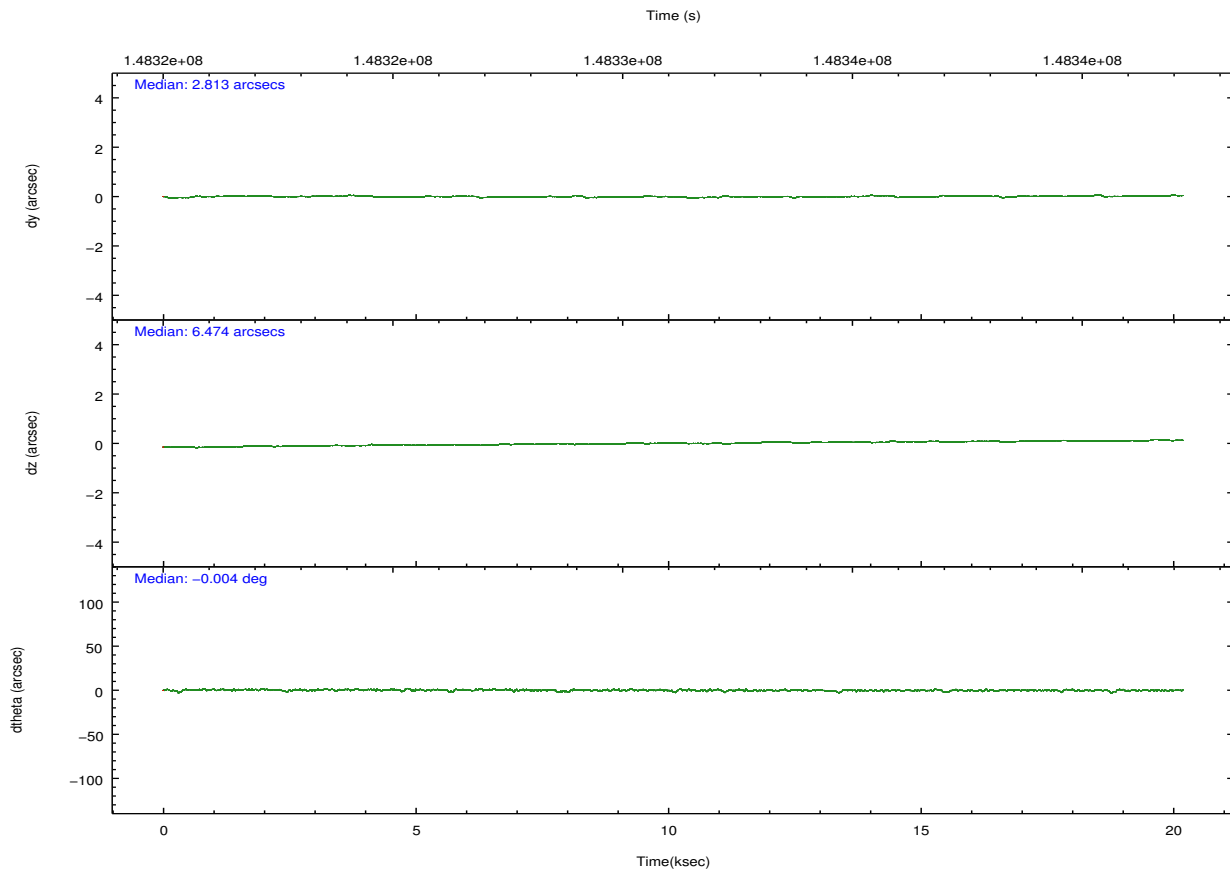
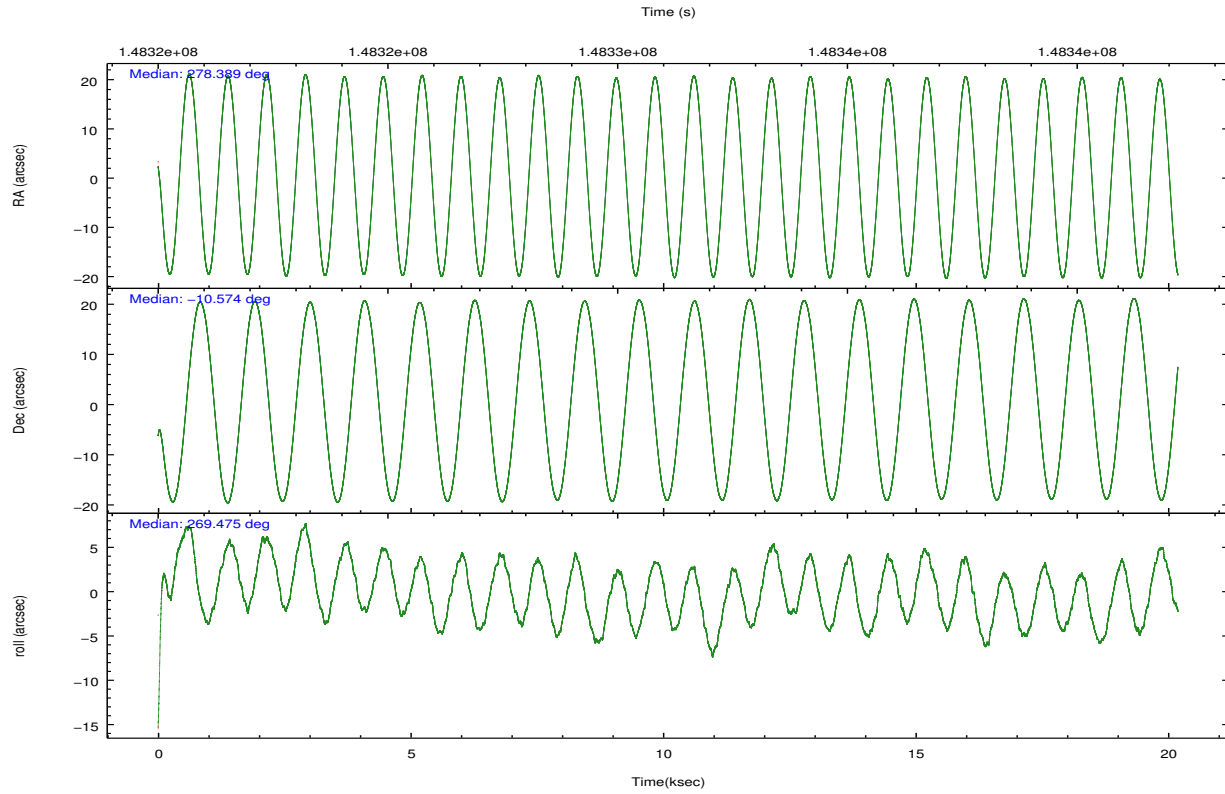
	segment 1	segment 2	segment 3
level 1 events	1	937732	9
rejected events	1	2772	9
rejected %	100%	0%	100%

## 2.2 Compared Parameters

Parameter	Planned	Actual	Parameter	Planned	Actual
Instrument	HRC	HRC	Obspar format version number	7	7
Detector	HRC-S	HRC-S	Obspar file type	PREDICTED	ACTUAL
Grating	NONE	NONE	Obspar update status	NONE	UPDATED
Data mode	OBSERVING	OBSERVING			
Observation mode	POINTING	POINTING			
[deg] Pointing RA	278.373853	278.3893793428995			
[deg] Pointing Dec	-10.549037	-10.57330991604795			
[deg] Pointing Roll	269.405815	269.4759837011432			
[s] Window start time (MET)	147225664.184000	147225664.184000			
[s] Window stop time (MET)	149731264.184000	149731264.184000			
[mm] SIM focus pos	-1.429586	-1.428180813131781			
[mm] SIM defocus	0.1037507710433287	0.1051558262725154			
[mm] SIM translation stage pos	250.455976	250.466033080201			
[mm] SIM translation stage offset	0	-0.01005468664627074			
[s] Observation start time (MET)	148321191.184000	148320357.47455			
Observation start date	2002-09-13T16:18:47	2002-09-13T16:05:57			
[s] Observation end time (MET)	148341191.184000	148341445.82542			
Observation end date	2002-09-13T21:52:07	2002-09-13T21:57:25			

## 2.3 Aspect



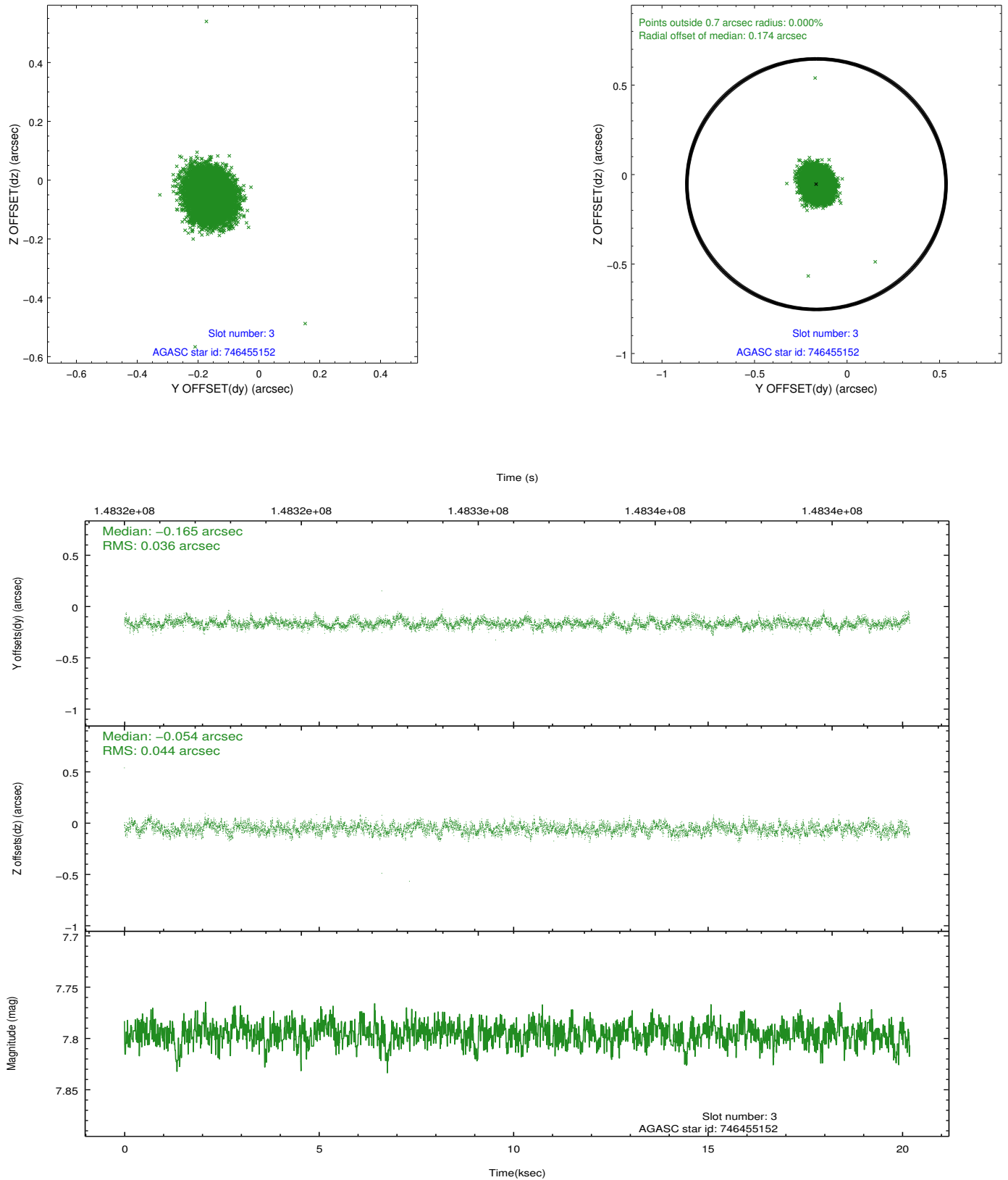


### Slot Statistics

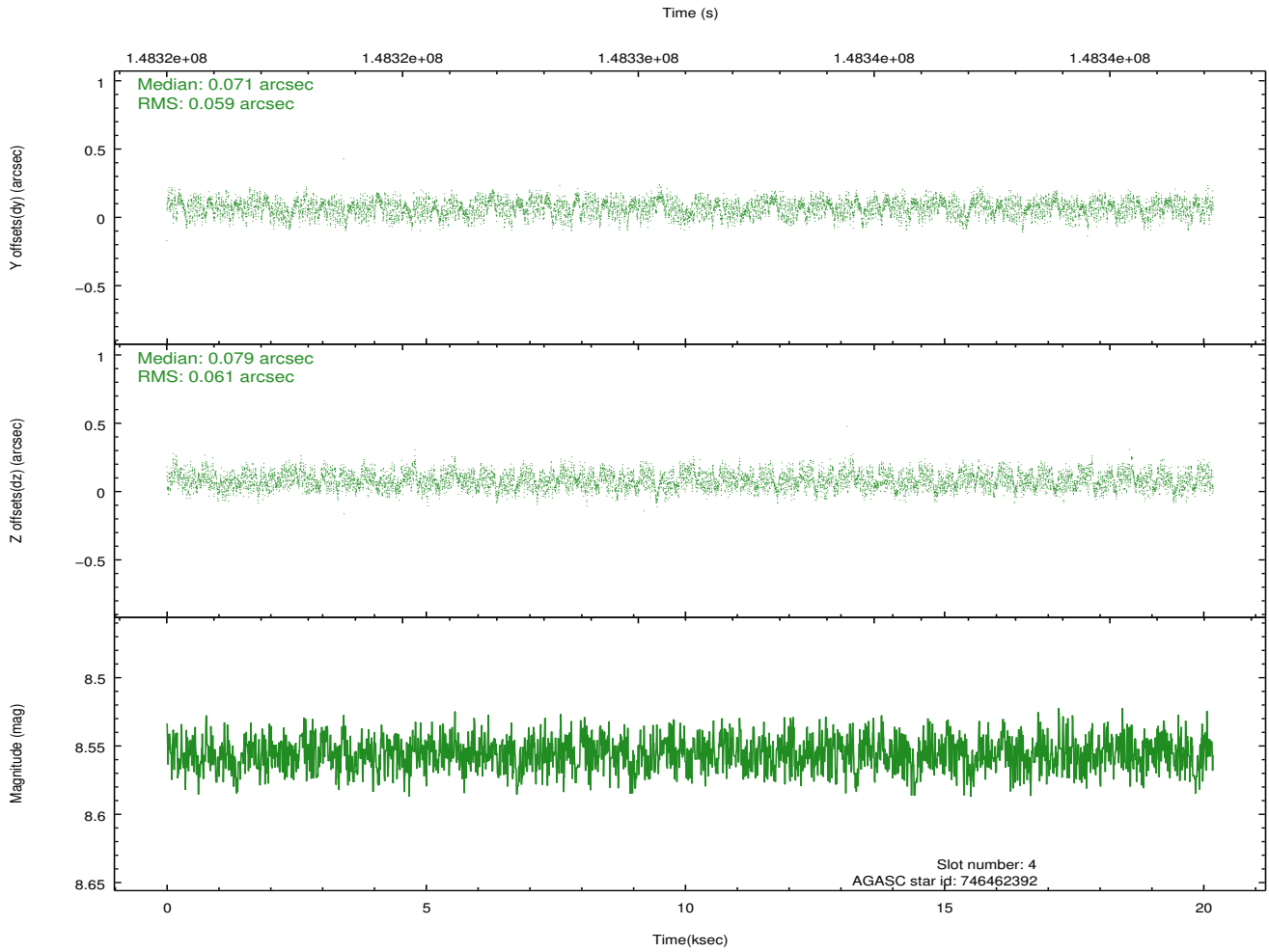
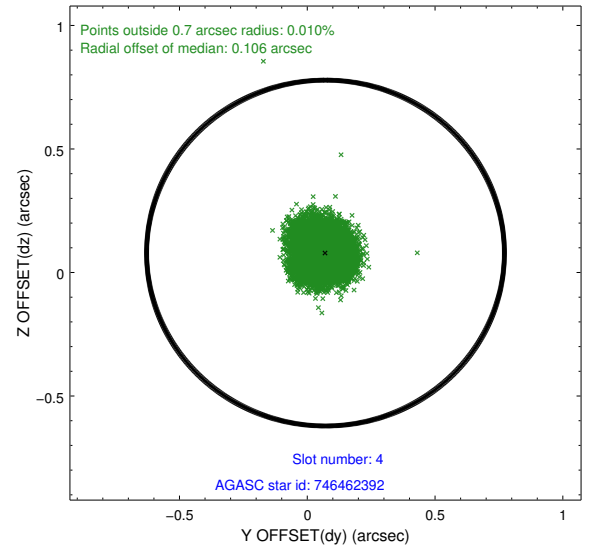
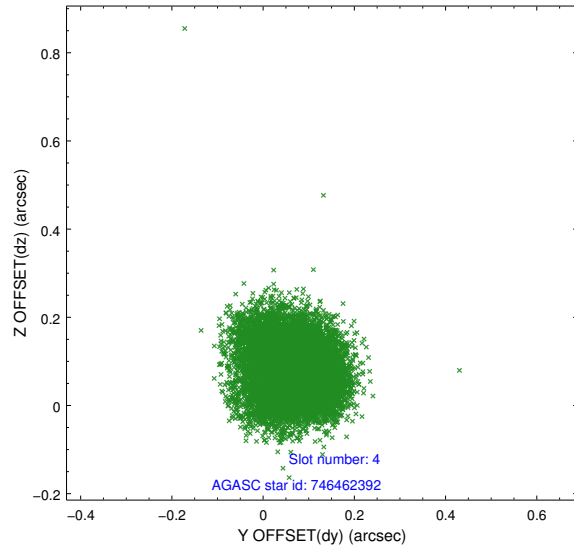
slot	status	id	mag	n_pts	med_dy	med_dz	dr1	dr2	ra	dec	mean_y	mean_z
0	FID	HRC-S-1	6.98	4924	0.139	-0.116	0.009	0.020	0.000000	0.000000	-1156.84	-455.00
1	FID	HRC-S-2	6.98	4925	0.103	-0.093	0.006	0.012	0.000000	0.000000	1242.57	-447.70
2	FID	HRC-S-3	7.00	4924	0.147	-0.093	0.010	0.025	0.000000	0.000000	-1159.31	574.46
3	GUIDE	746455152	7.80	9850	-0.165	-0.054	0.061	0.097	278.447893	-9.976732	-2064.48	240.87
4	GUIDE	746462392	8.56	9848	0.071	0.079	0.091	0.143	279.038421	-10.890715	1207.10	2362.32
5	GUIDE	746455112	8.93	9842	0.193	-0.188	0.077	0.126	278.266531	-10.703234	557.89	-373.83
6	GUIDE	746460328	9.81	9834	-0.092	0.052	0.134	0.225	278.603974	-9.898096	-2352.70	791.58
7	GUIDE	746461728	9.79	9830	-0.004	0.105	0.127	0.221	278.986921	-10.530755	-87.90	2169.09

## 2.4 Star Slots

### 2.4.1 Slot 3

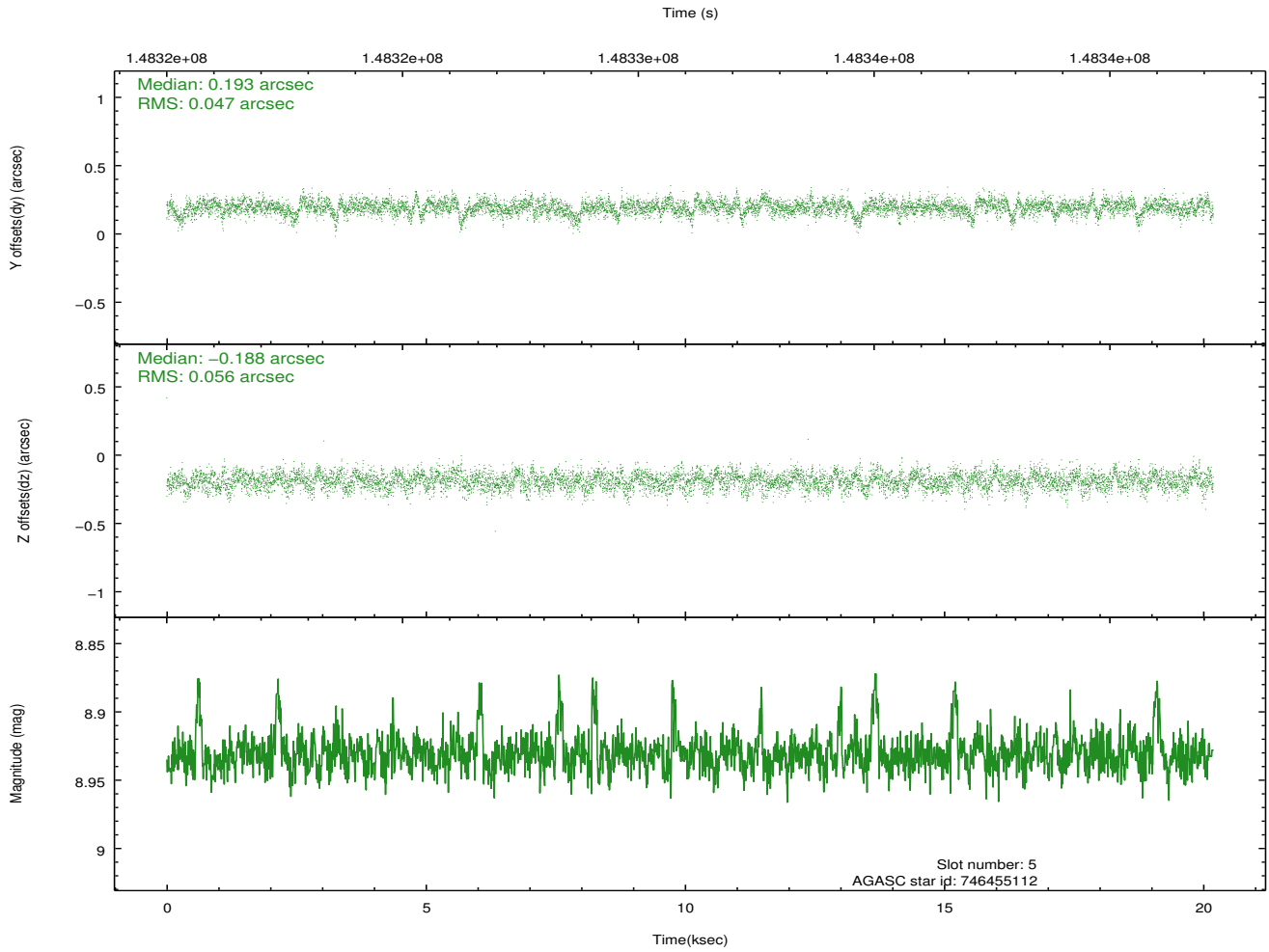
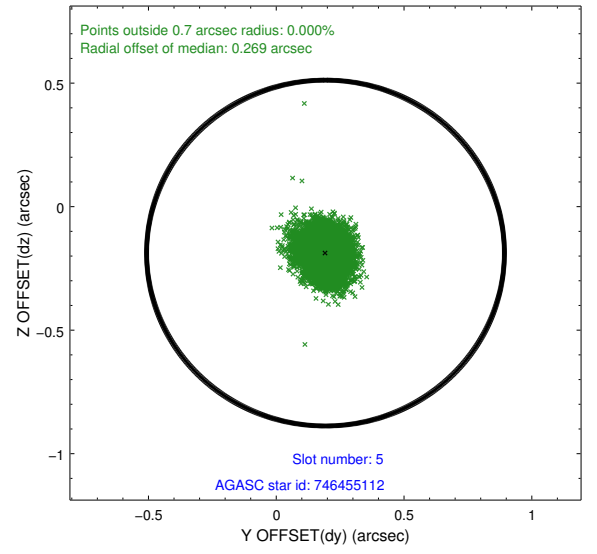
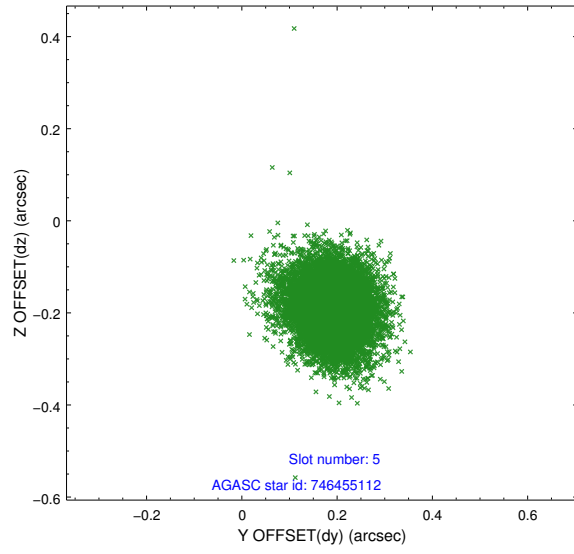


## 2.4.2 Slot 4

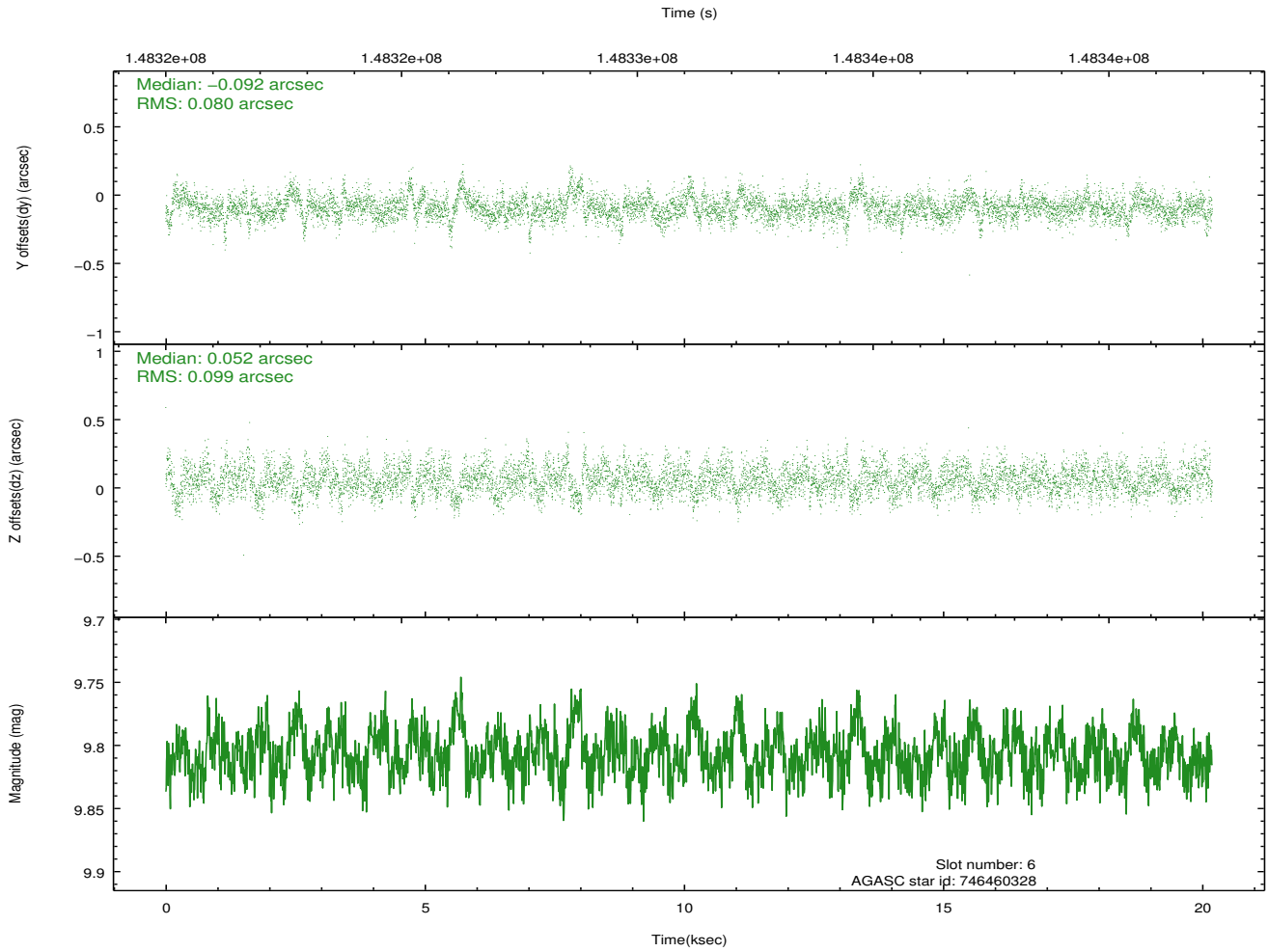
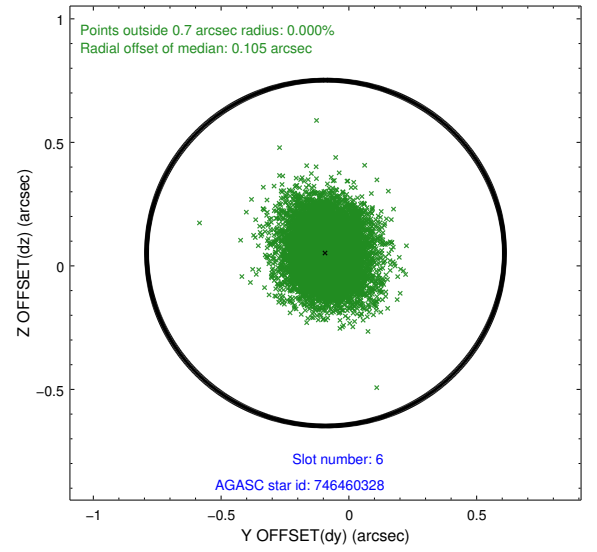
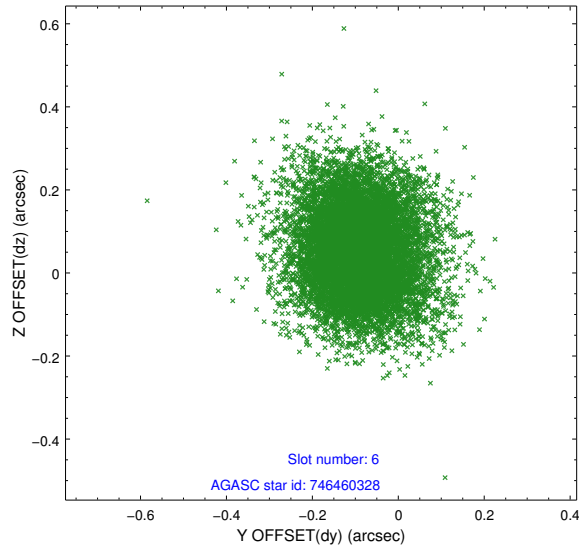




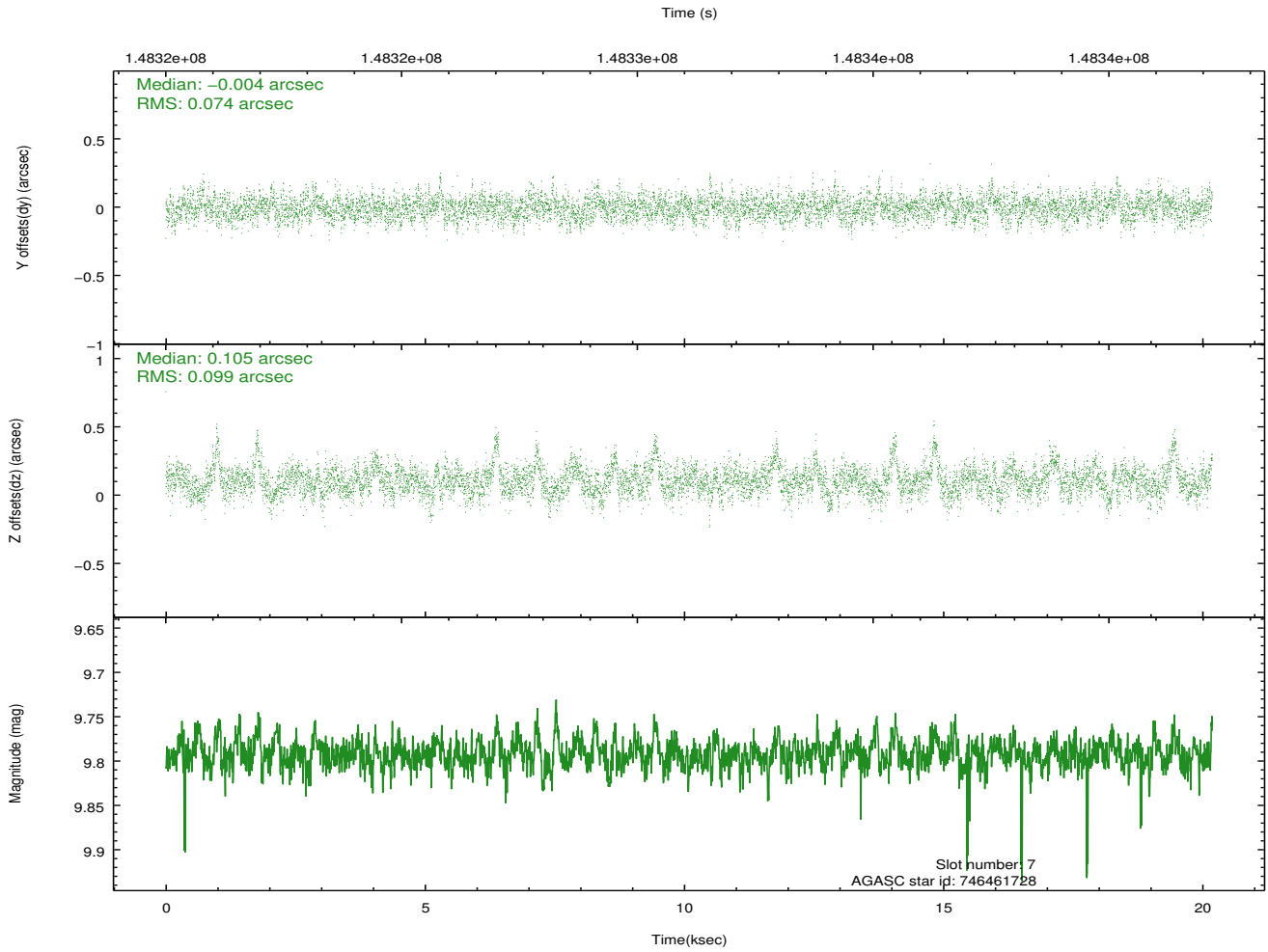
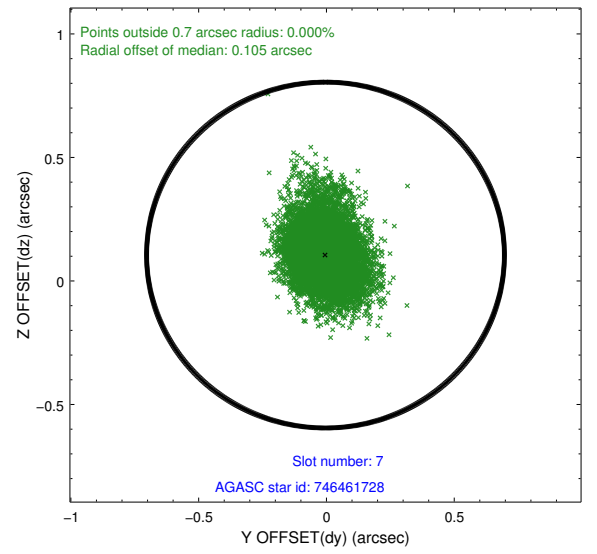
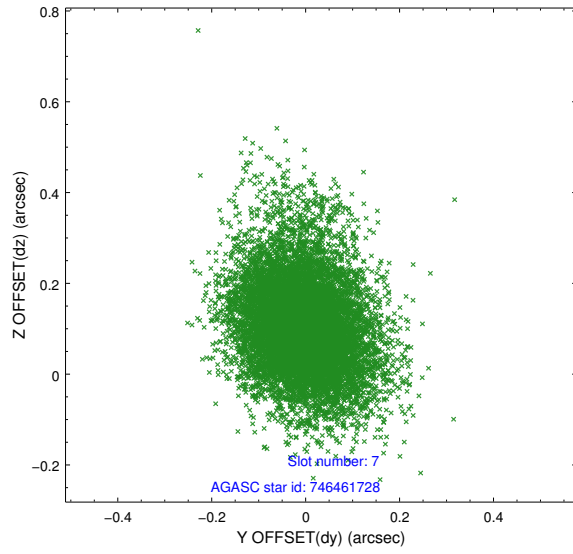
### 2.4.3 Slot 5



## 2.4.4 Slot 6

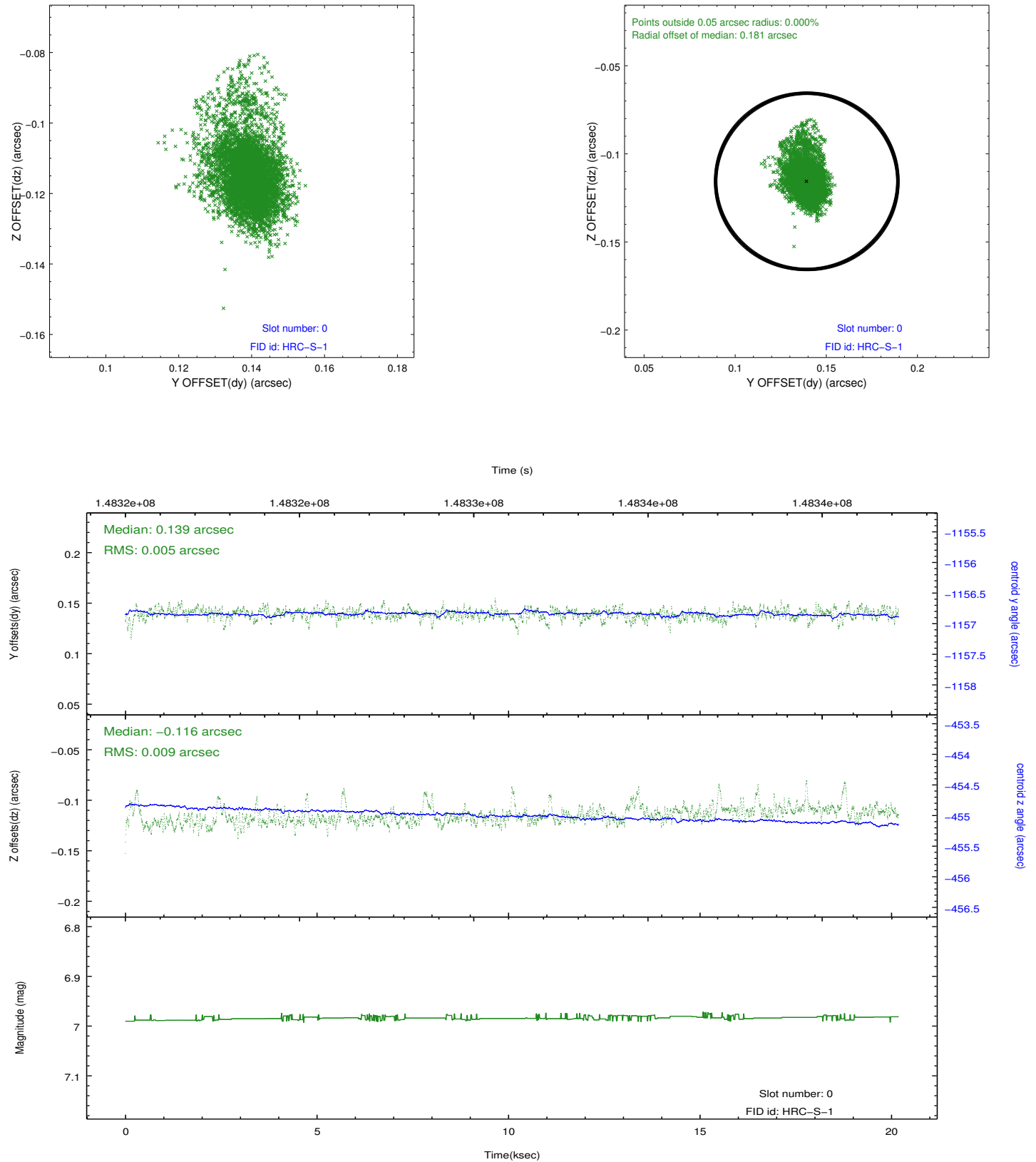


## 2.4.5 Slot 7

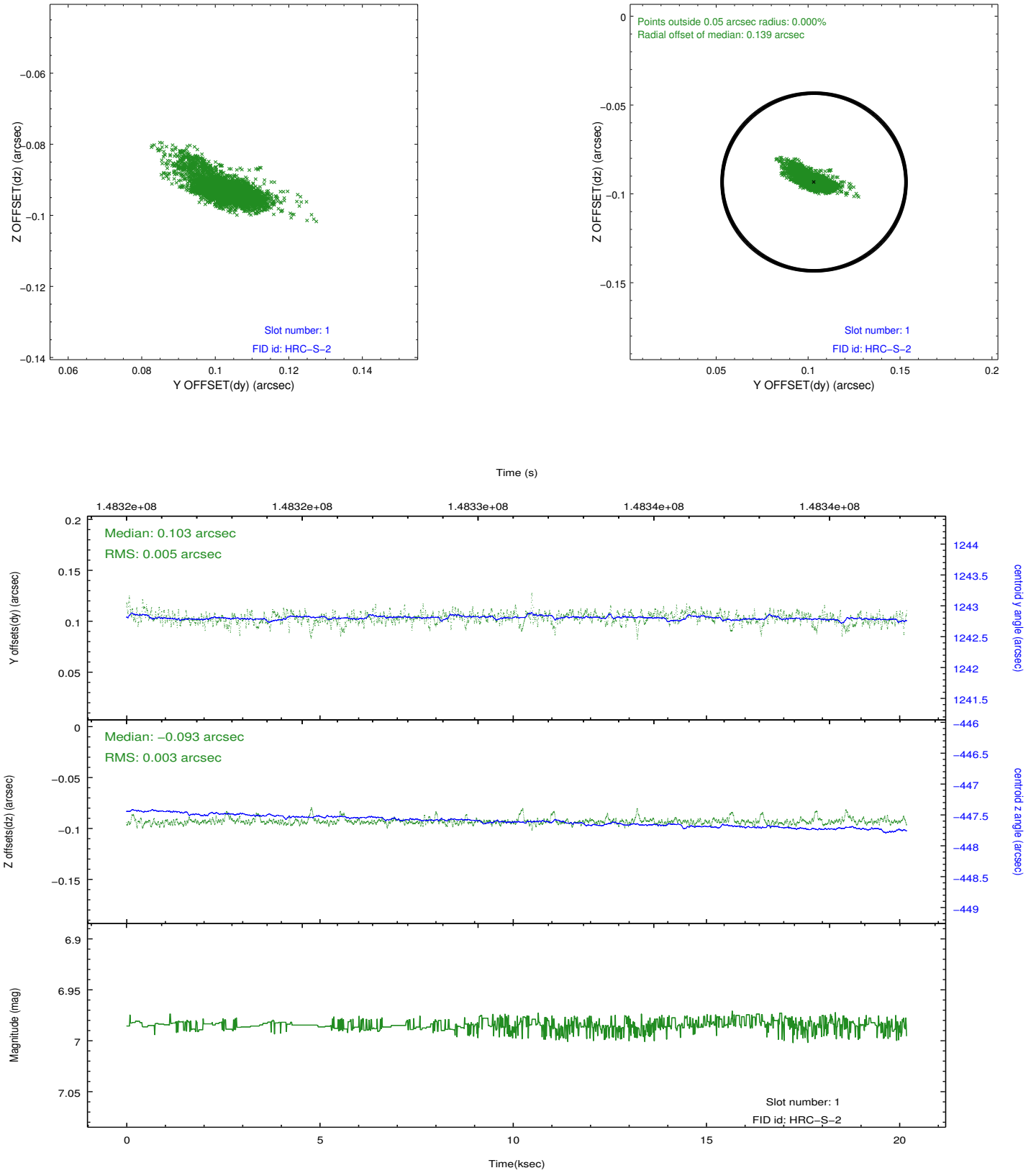


## 2.5 FID Slots

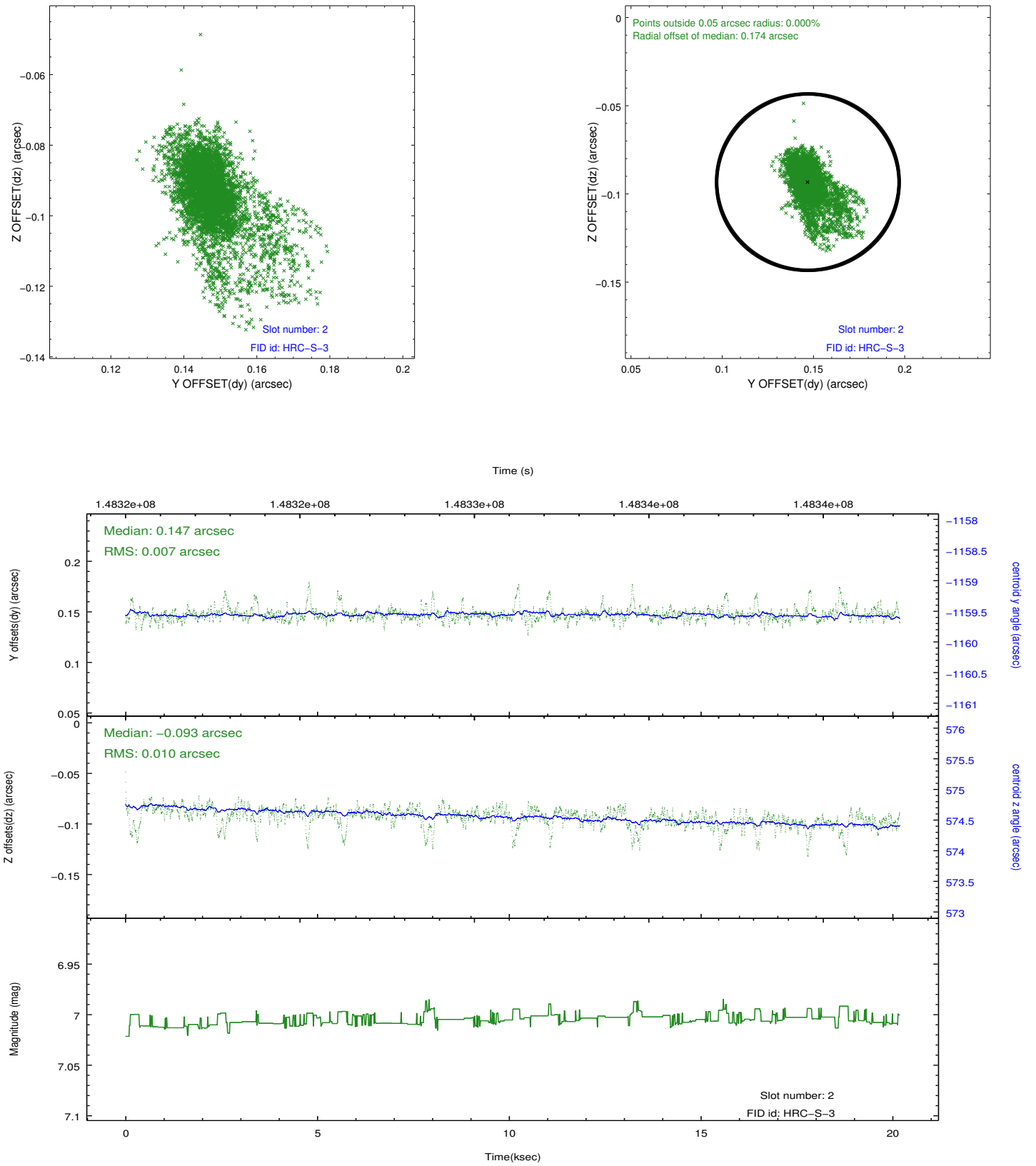
### 2.5.1 Slot 0



## 2.5.2 Slot 1



### 2.5.3 Slot 2



## A Summary

### A.1 Status

V&V Scientist	Beth Sundheim
V&V Date (YYYY-MM-DD)	2012.10.24
V&V Edition	1
V&V Disposition and Status	OK
V&V Charge Time	19.818

### A.2 Comments

Window preference met.