

V&V Reference Report

L2 ASCDS Version : 7.6.9

Observation 2875 - L2 Version 001
Chandra X-Ray Center

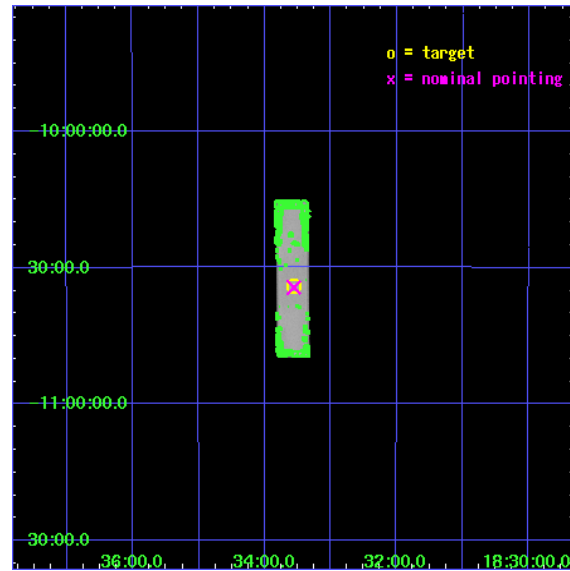
L2 Processing Date : Oct 4 2006

Contents

1	Front	2
2	OBI	3
2.1	OBI	3
2.1.1	Images	3
2.1.2	Parameters	4
2.1.3	Events	4
2.2	Compared Parameters	5
2.3	Aspect	6
2.4	Star Slots	9
2.4.1	Slot 3	9
2.4.2	Slot 4	10
2.4.3	Slot 5	11
2.4.4	Slot 6	12
2.4.5	Slot 7	13
2.5	FID Slots	14
2.5.1	Slot 0	14
2.5.2	Slot 1	15
2.5.3	Slot 2	16
3	Point Sources	17
A	Summary	18
A.1	Status	18
A.2	Comments	18

1 Front

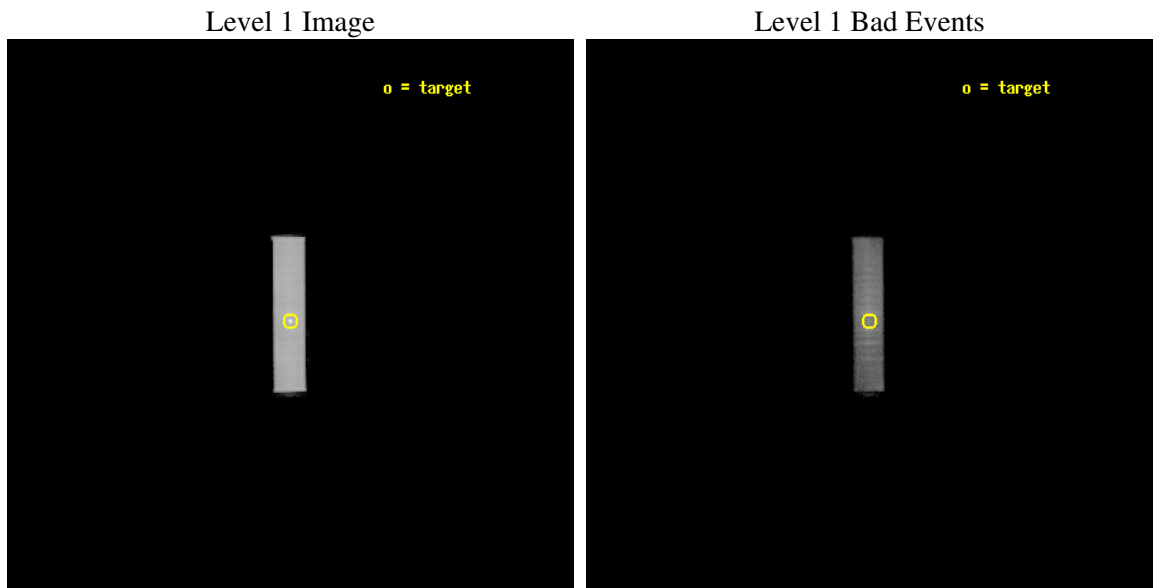
seq_num	590264
obs_id	2875
title	AO3B CALIBRATION OBSERVATIONS THE STANDARD CANDLES CAS A AND G21.5-09
observer	Dr. CXC Calibration
object	G21.5-0.9 [HRC-S, Offsets=0,0,0]
ra_targ	278.389583
dec_targ	-10.568528
ra_nom	278.3893793455
dec_nom	-10.573309906862
roll_nom	269.47598370129
revision	2
ontime	19818.632068902
livetime	19710.594104978
l2events	726340



2 OBI

2.1 OBI

2.1.1 Images



2.1.2 Parameters

obi_num	1
ascdsver	7.6.9
caldsver	3.2.3
date	2006-10-04T09:17:37
revision	2

sched_exp_time	20000.000000
ontime	19912.675822794
l1events	937742

2.1.3 Events

Level 1 Events

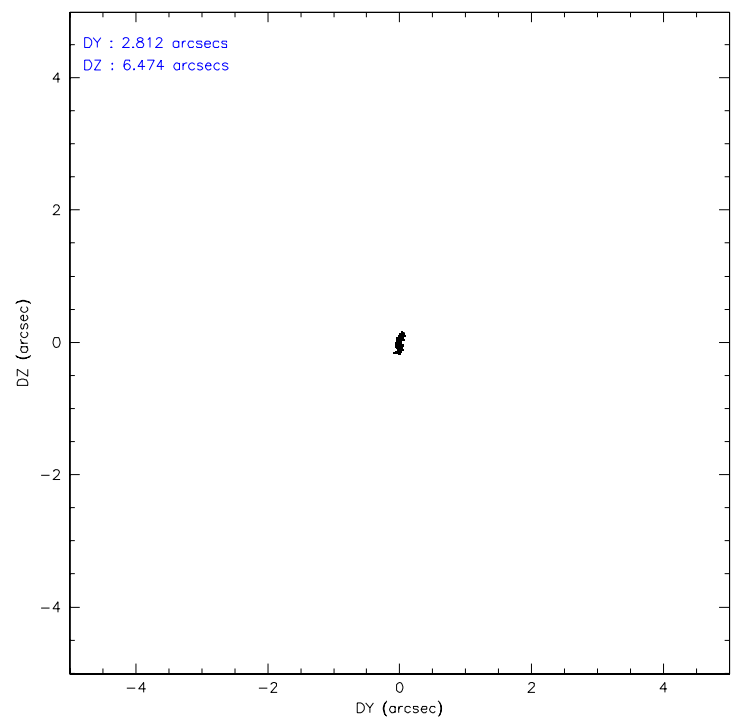
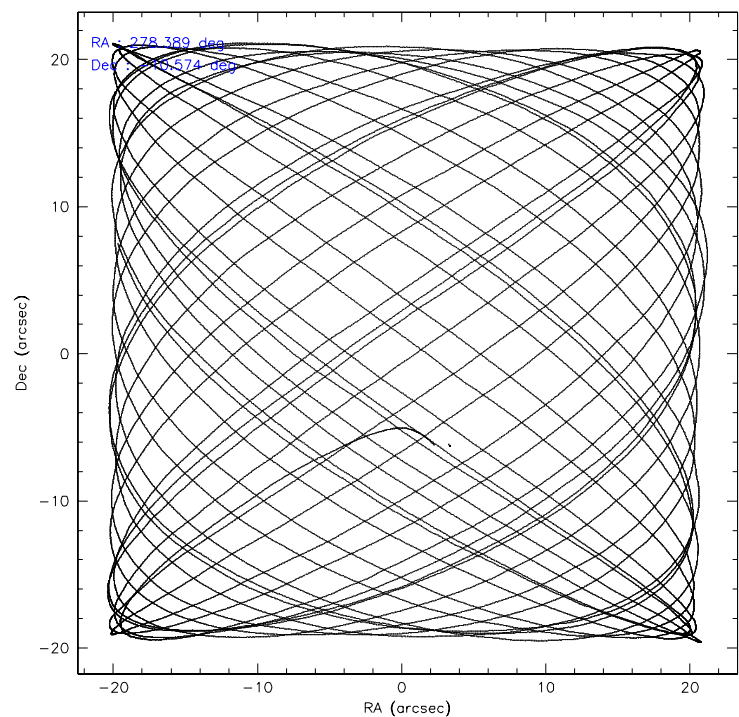
	segment 1	segment 2	segment 3
level 1 events	1	937732	9
rejected events	1	161461	9
rejected %	100%	17%	100%

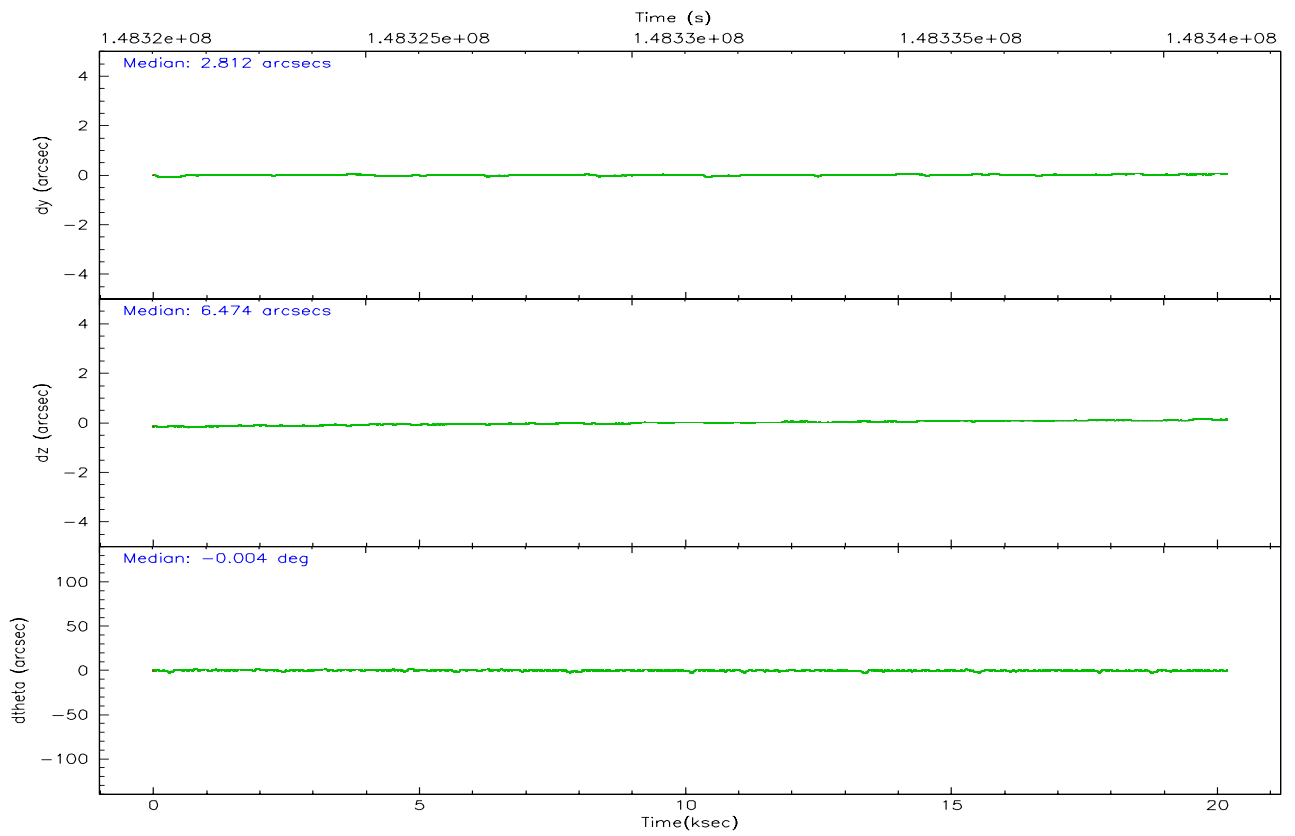
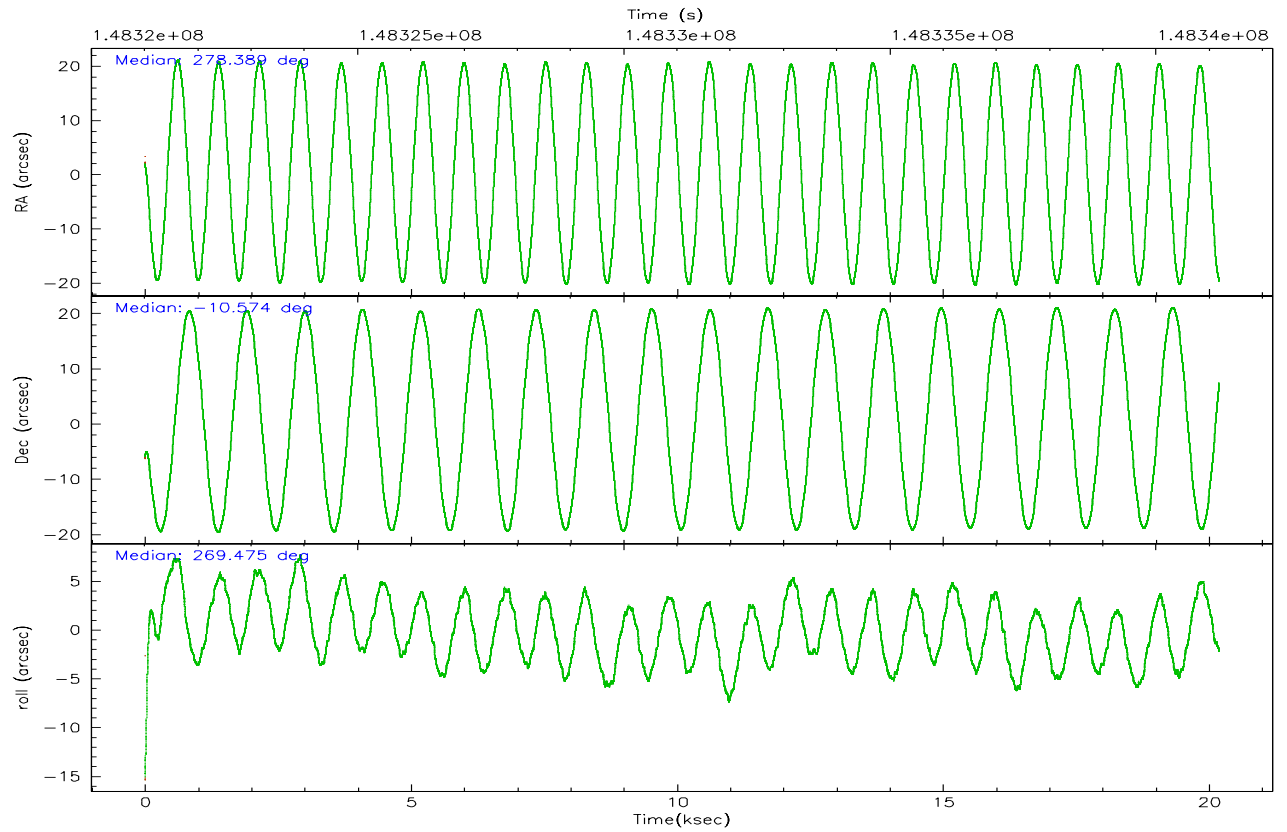
2.2 Compared Parameters

Parameter	Planned	Actual
Instrument	HRC	HRC
Detector	HRC-S	HRC-S
Grating	NONE	NONE
Data mode	OBSERVING	OBSERVING
Observation mode	POINTING	POINTING
Pointing RA	278.373853	278.3893793455017
Pointing Dec	-10.549037	-10.57330990686224
Pointing Roll	269.405815	269.475983701293
Window start time	147225664.184000	147225664.184000
Window stop time	149731264.184000	149731264.184000
SIM focus pos (mm)	-1.429586	-1.428180813131781
SIM defocus (mm)	0.1037507710433287	0.1051558262725154
SIM translation stage pos (mm)	250.455976	250.466033080201
SIM translation stage offset (mm)	0	-0.01005468664627074
Observation start time	148321191.184000	148320357.47455
Observation start date	2002-09-13T16:18:47	2002-09-13T16:05:57
Observation end time	148341191.184000	148341445.82542
Observation end date	2002-09-13T21:52:07	2002-09-13T21:57:25

Parameter	Planned	Actual
Obspar format version number	6	6
Obspar file type	PREDICTED	ACTUAL
Obspar update status	NONE	UPDATED

2.3 Aspect



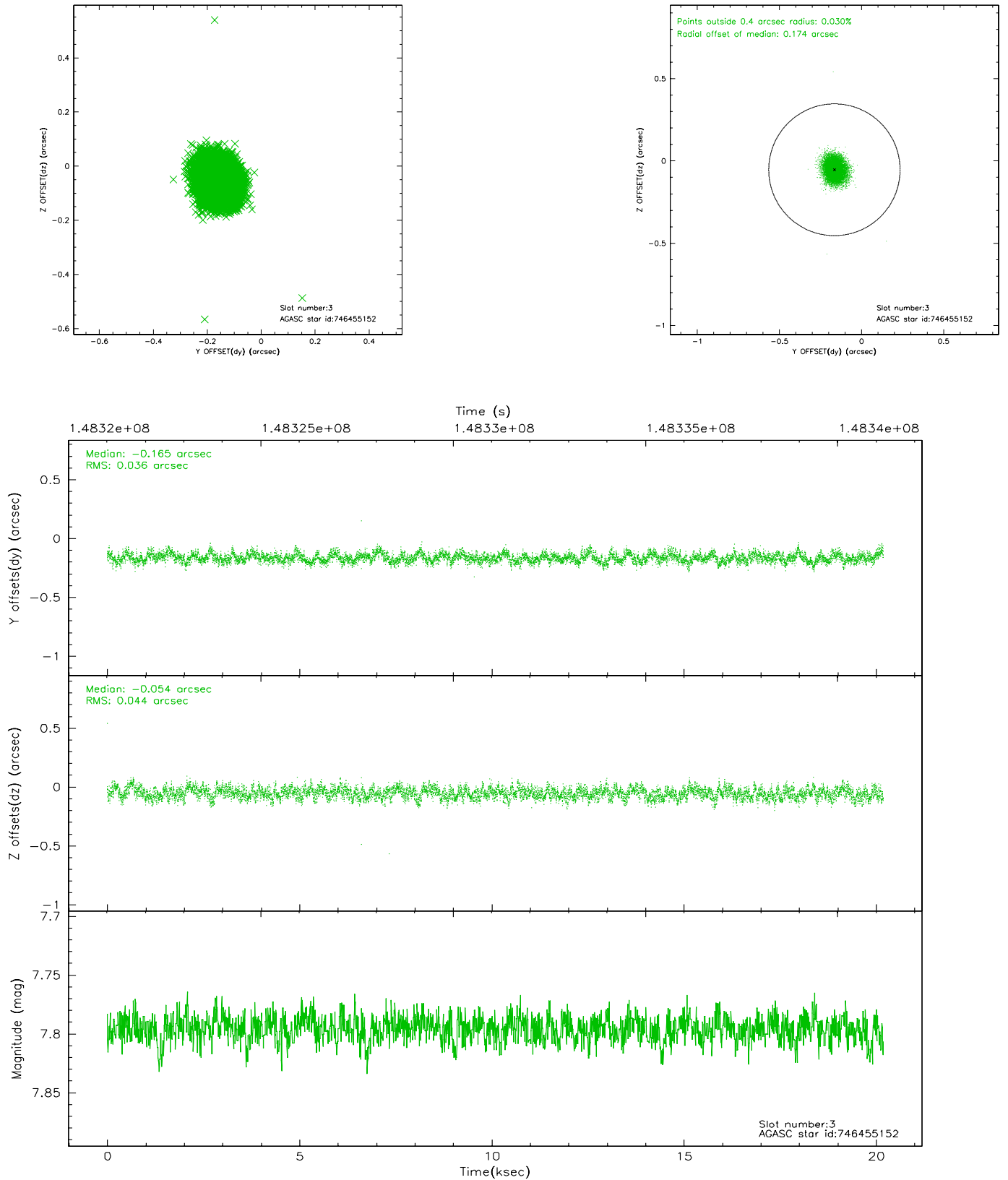


Slot Statistics

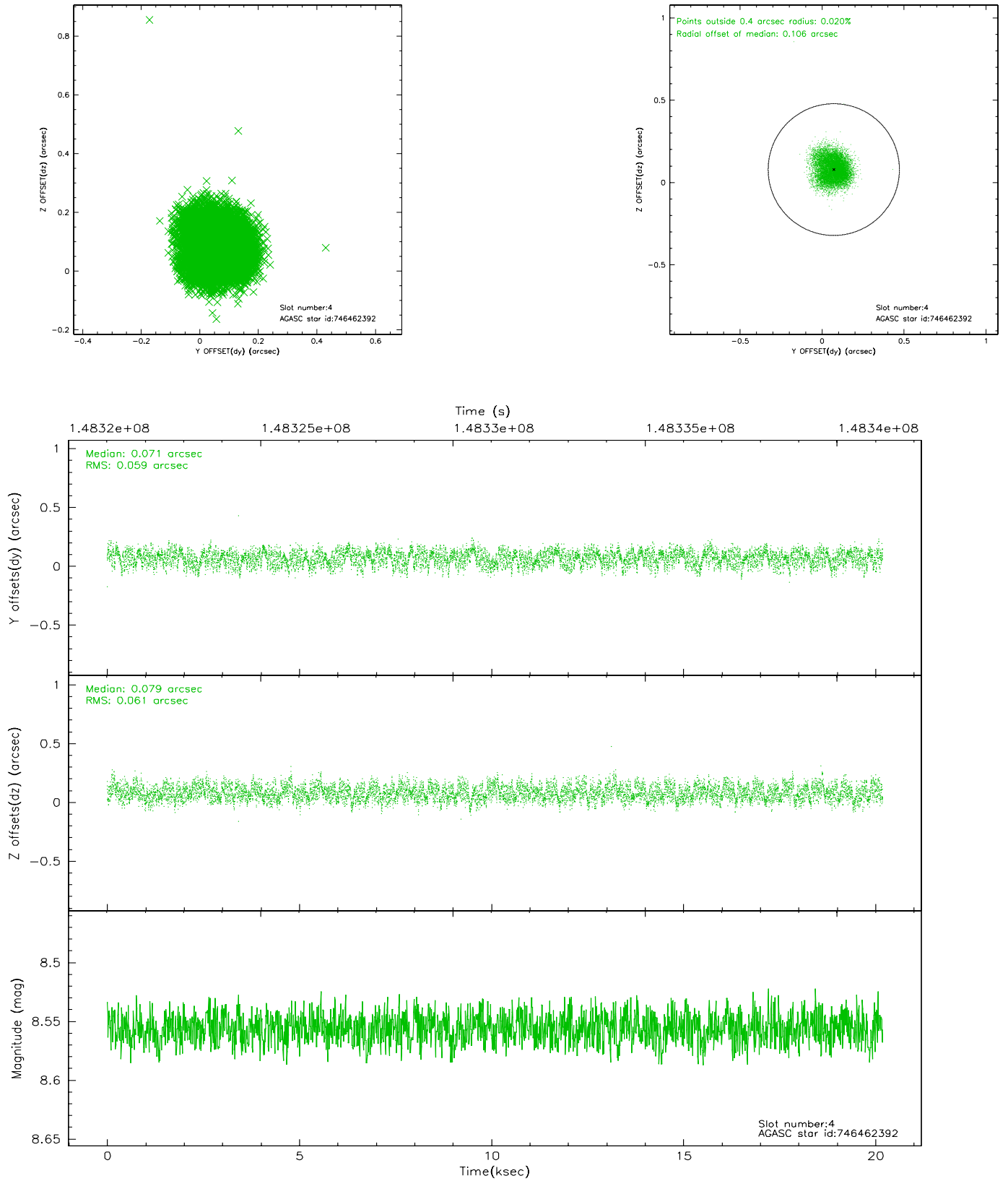
slot	status	id	mag	n_pts	med_dy	med_dz	dr1	dr2	ra	dec	mean_y	mean_z
0	FID	HRC-S-1	6.98	4924	0.139	-0.116	0.009	0.020	0.000000	0.000000	-1156.84	-455.00
1	FID	HRC-S-2	6.98	4925	0.103	-0.093	0.006	0.012	0.000000	0.000000	1242.57	-447.70
2	FID	HRC-S-3	7.00	4924	0.147	-0.093	0.010	0.025	0.000000	0.000000	-1159.31	574.46
3	GUIDE	746455152	7.80	9850	-0.165	-0.054	0.061	0.097	278.447893	-9.976732	-2064.48	240.87
4	GUIDE	746462392	8.56	9848	0.071	0.079	0.091	0.143	279.038421	-10.890715	1207.10	2362.32
5	GUIDE	746455112	8.93	9842	0.193	-0.188	0.077	0.126	278.266531	-10.703234	557.89	-373.83
6	GUIDE	746460328	9.81	9834	-0.092	0.052	0.134	0.225	278.603974	-9.898096	-2352.70	791.58
7	GUIDE	746461728	9.79	9830	-0.004	0.105	0.127	0.221	278.986921	-10.530755	-87.90	2169.09

2.4 Star Slots

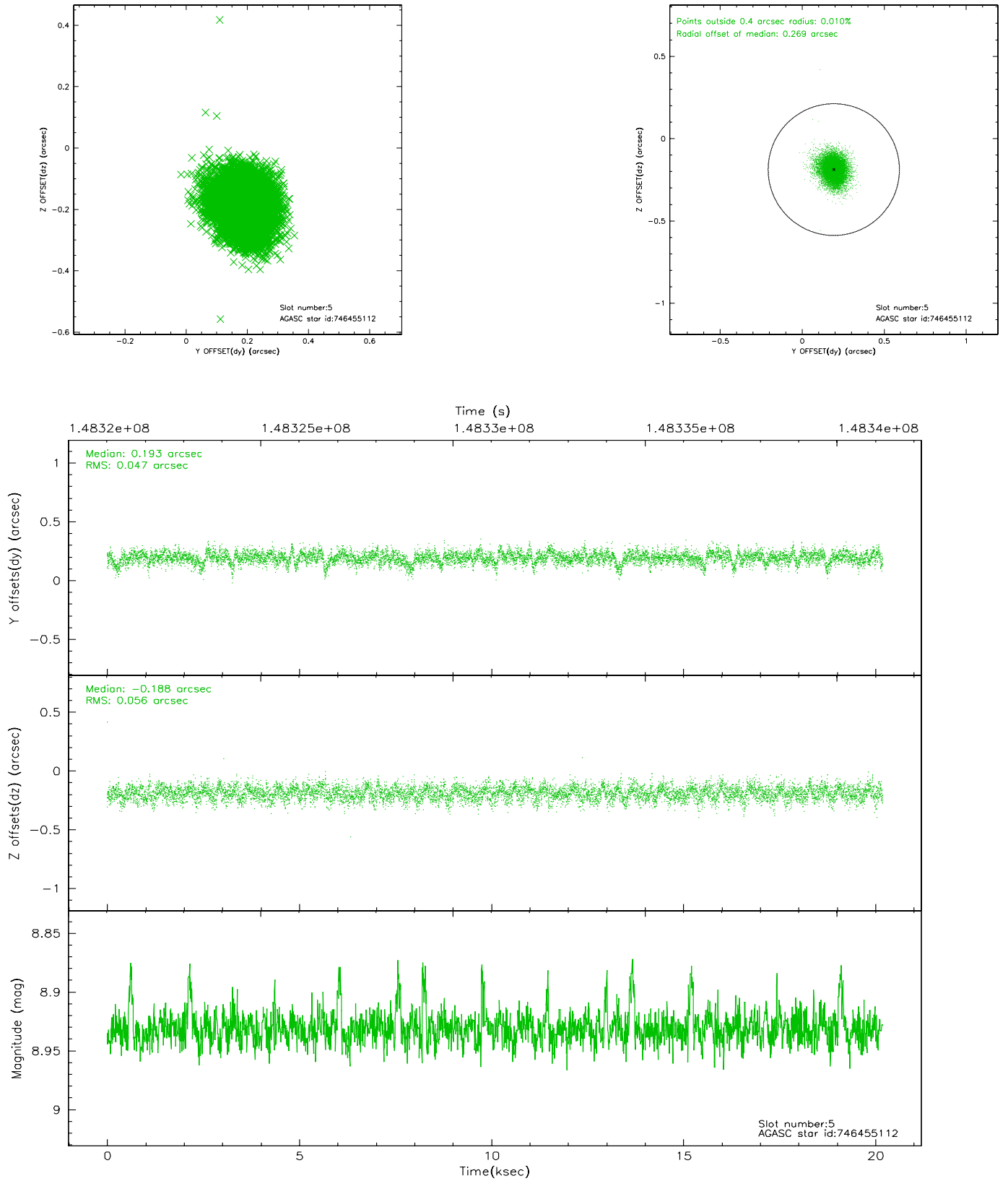
2.4.1 Slot 3



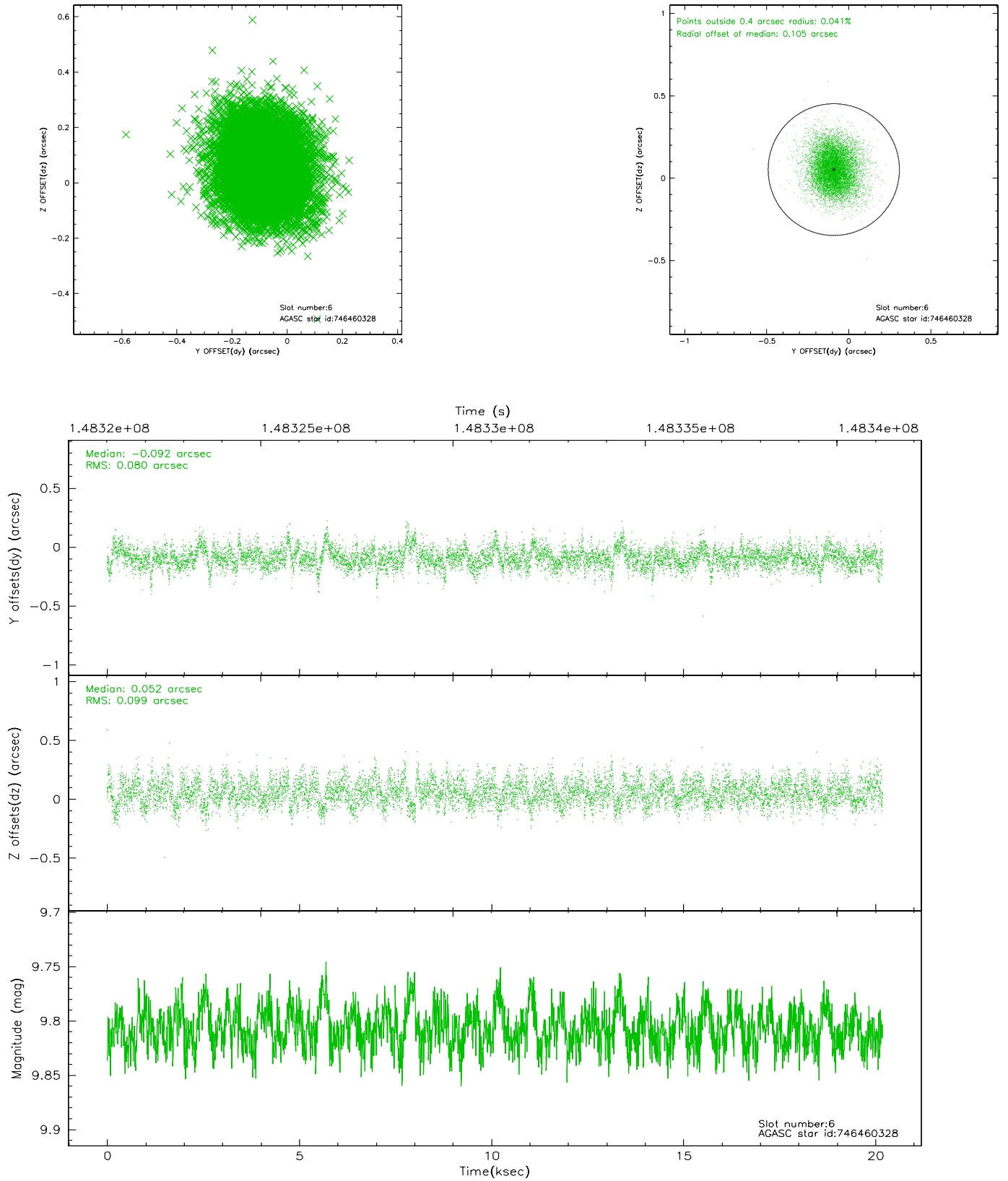
2.4.2 Slot 4



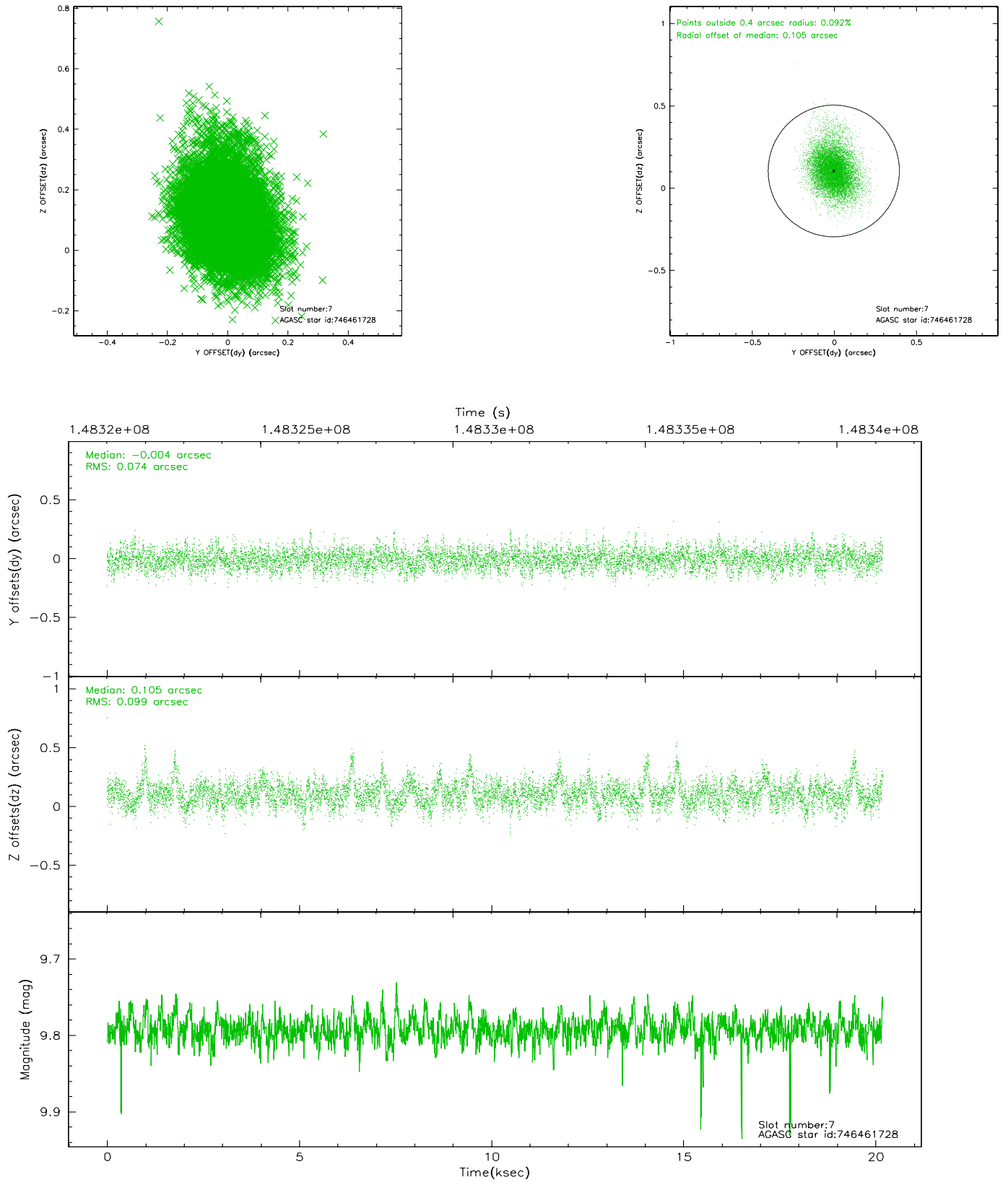
2.4.3 Slot 5



2.4.4 Slot 6

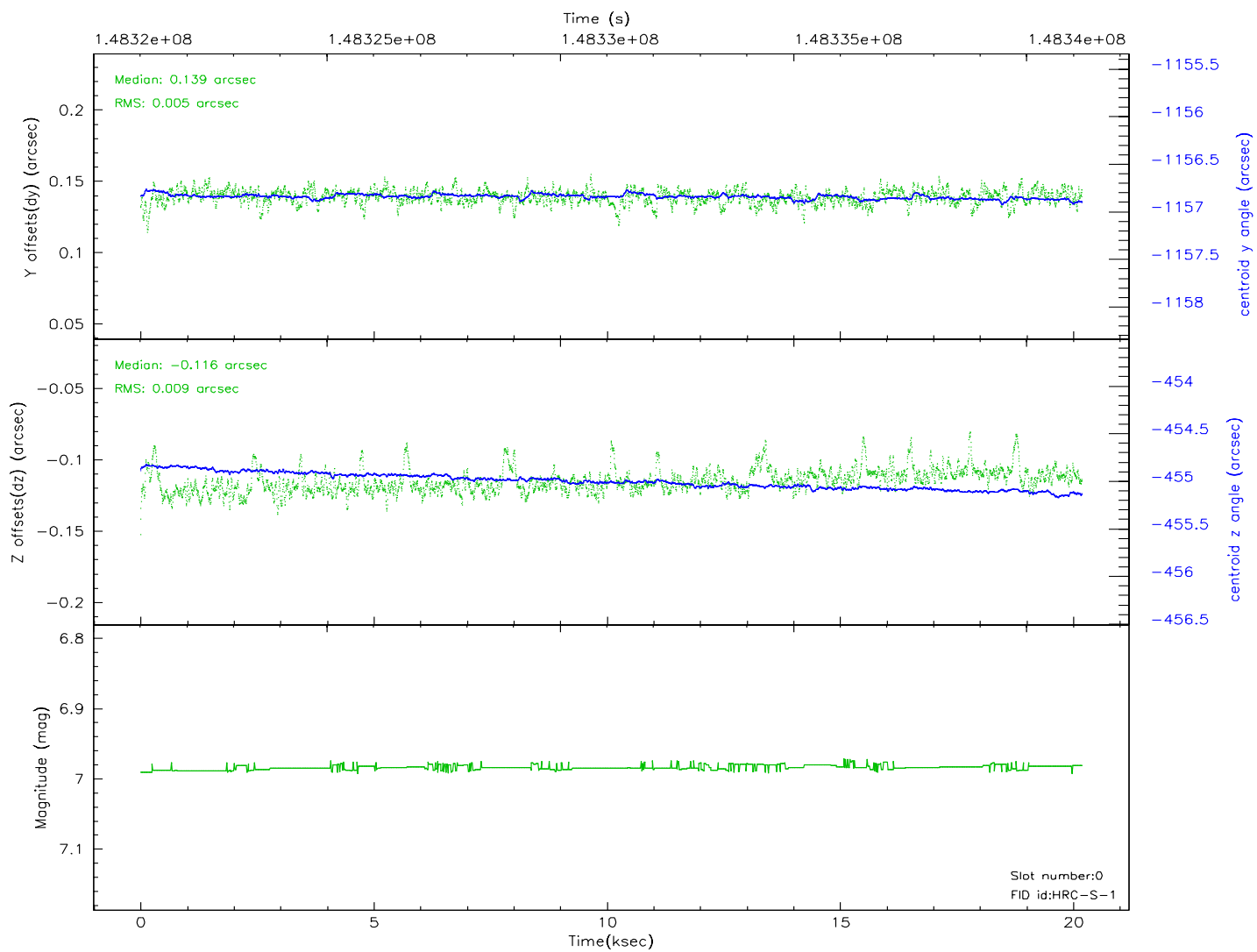
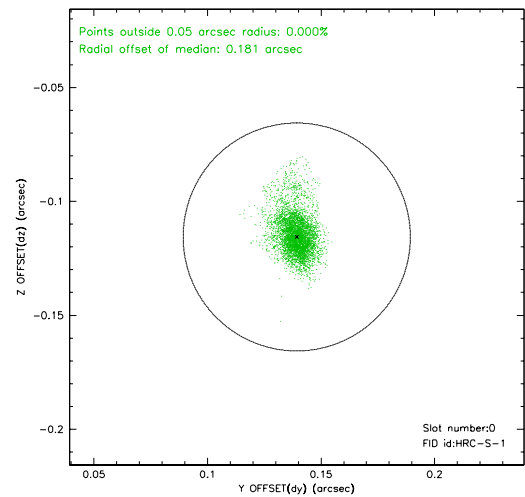
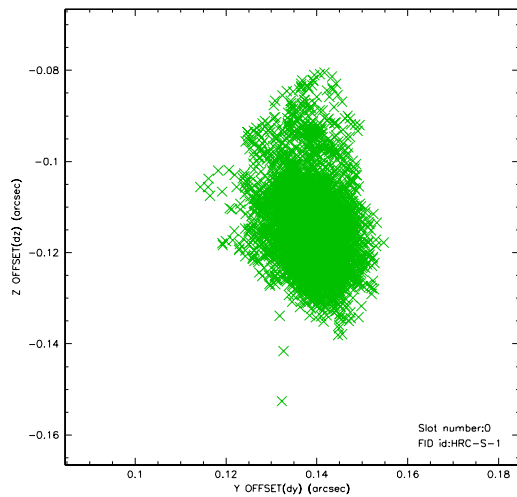


2.4.5 Slot 7

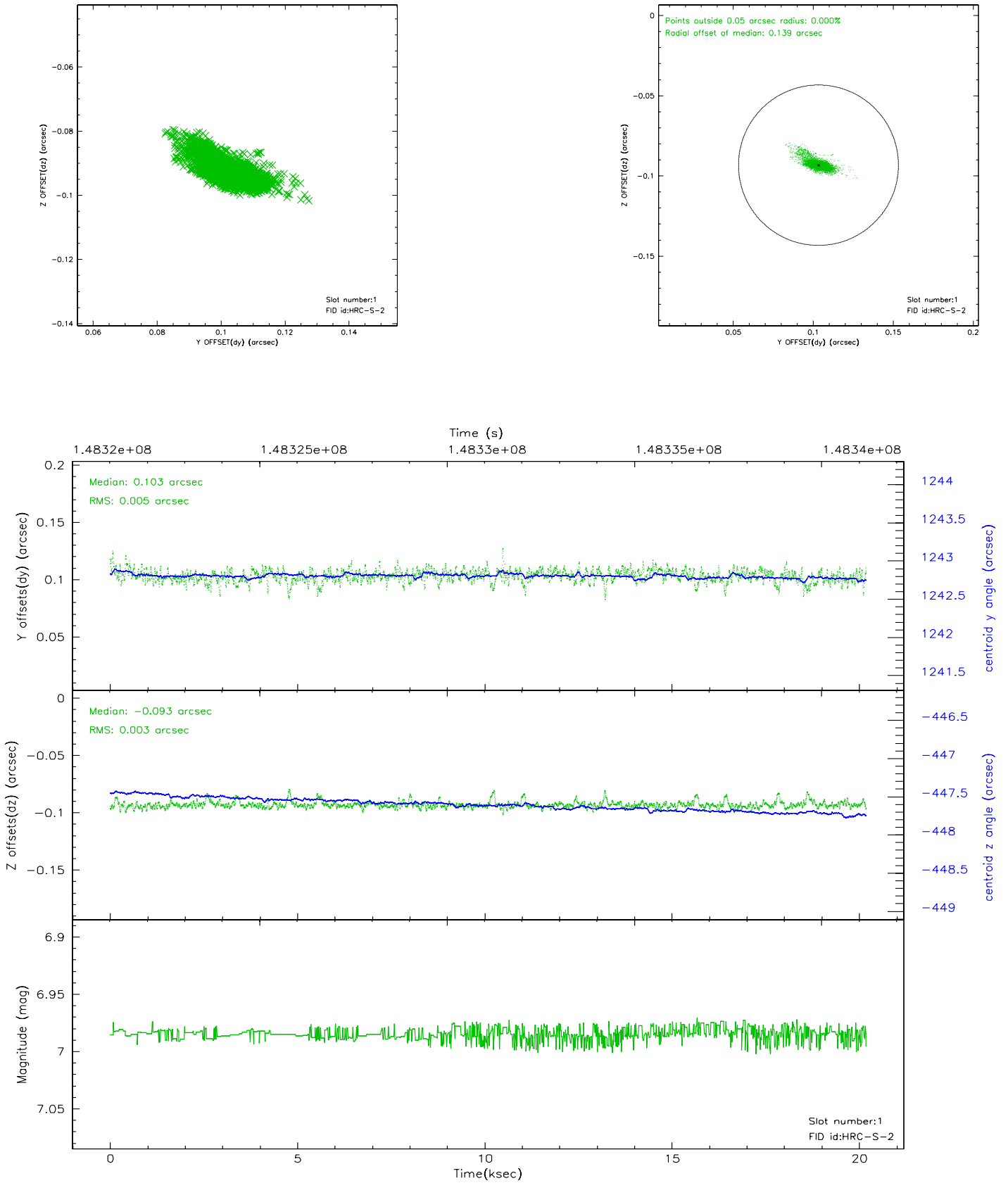


2.5 FID Slots

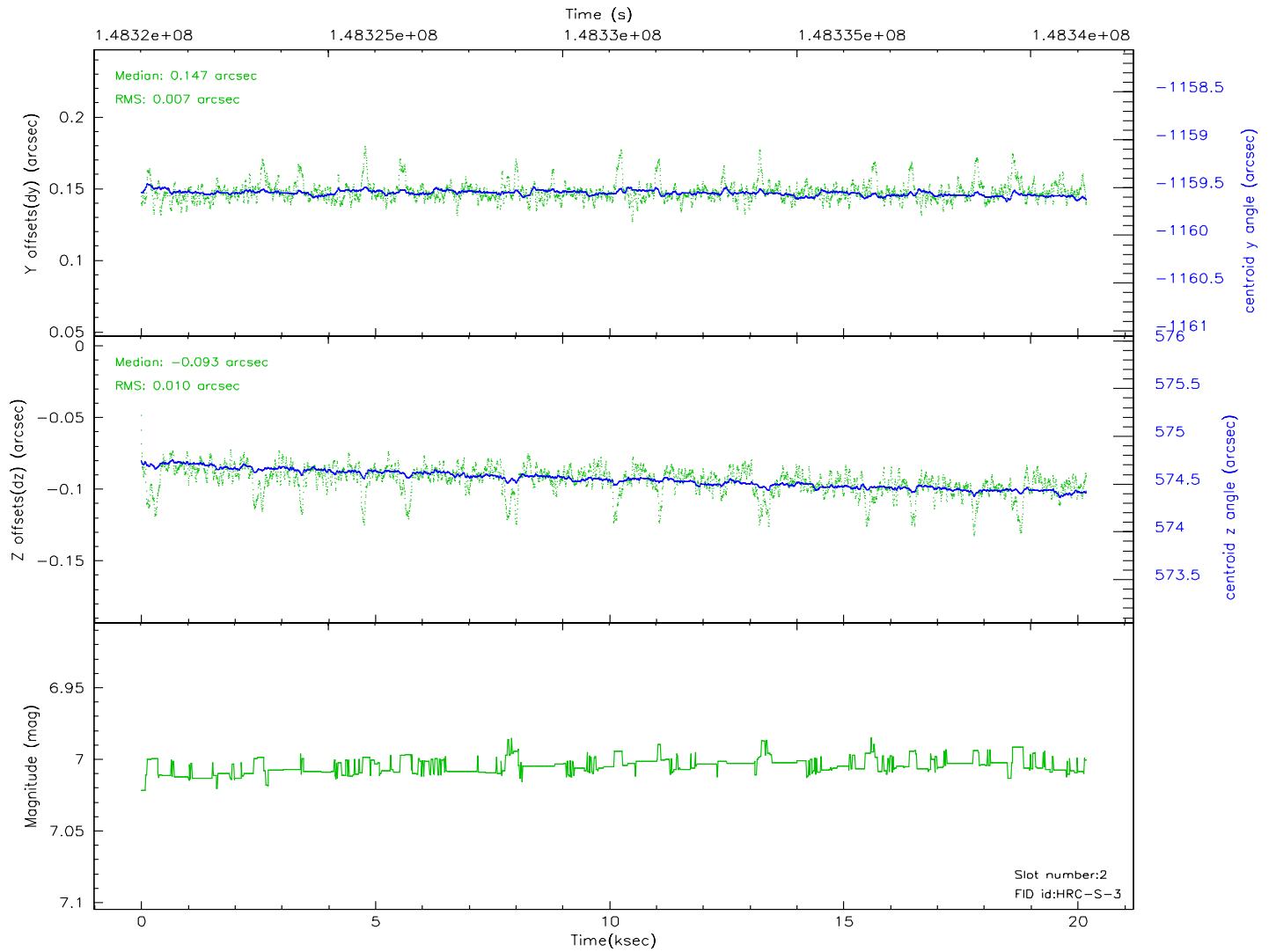
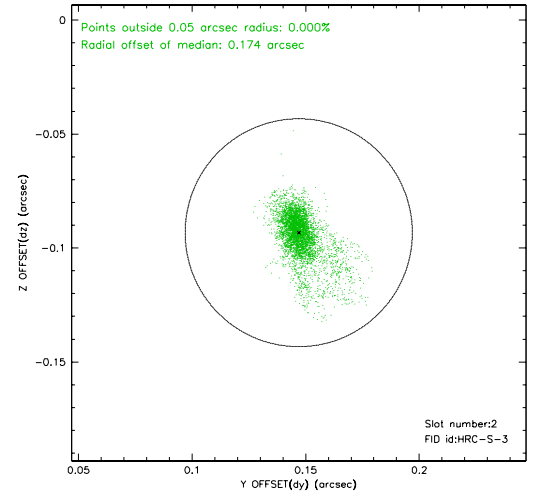
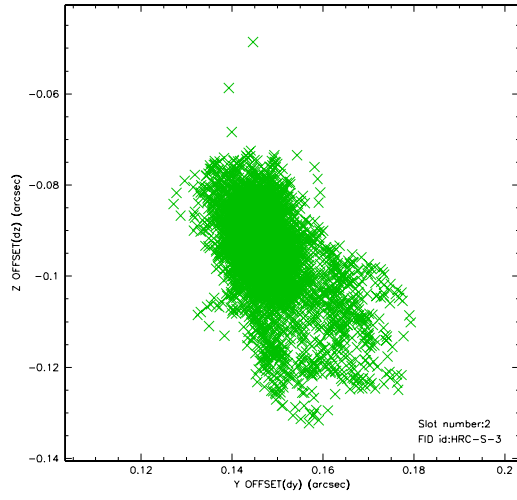
2.5.1 Slot 0



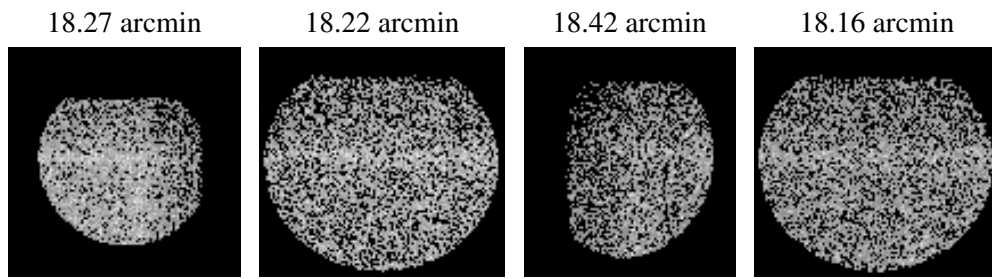
2.5.2 Slot 1



2.5.3 Slot 2



3 Point Sources



A Summary

A.1 Status

V&V Scientist	Jen Lauer
V&V Date (YYYY-MM-DD)	2006.10.04
V&V Edition	1
V&V Disposition and Status	OK
V&V Charge Time	19.818

A.2 Comments

Window constraint met.