

V&V Reference Report

L2 ASCDS Version : 7.6.8.1

Observation 2871 - L2 Version 3
Chandra X-Ray Center

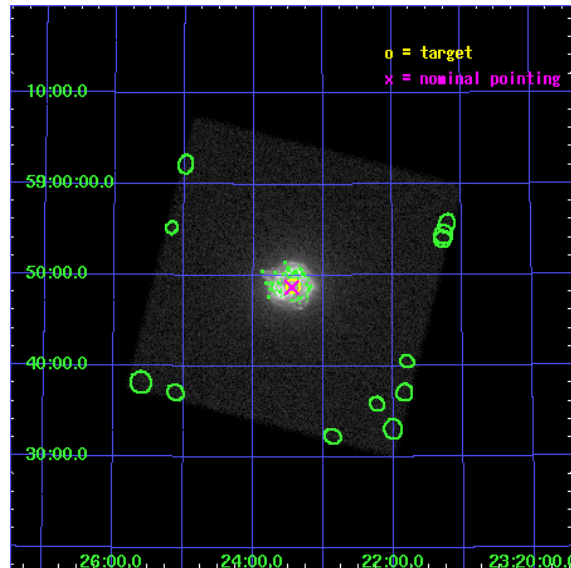
L2 Processing Date : Nov 21 2007

Contents

1	Front	2
2	OBI	3
2.1	OBI	3
2.1.1	Images	3
2.1.2	Parameters	4
2.1.3	Events	4
2.2	Compared Parameters	5
2.3	Aspect	6
2.4	Star Slots	9
2.4.1	Slot 3	9
2.4.2	Slot 4	10
2.4.3	Slot 5	11
2.4.4	Slot 6	12
2.4.5	Slot 7	13
2.5	FID Slots	14
2.5.1	Slot 0	14
2.5.2	Slot 1	15
2.5.3	Slot 2	16
3	Point Sources	17
A	Summary	18
A.1	Status	18
A.2	Comments	18

1 Front

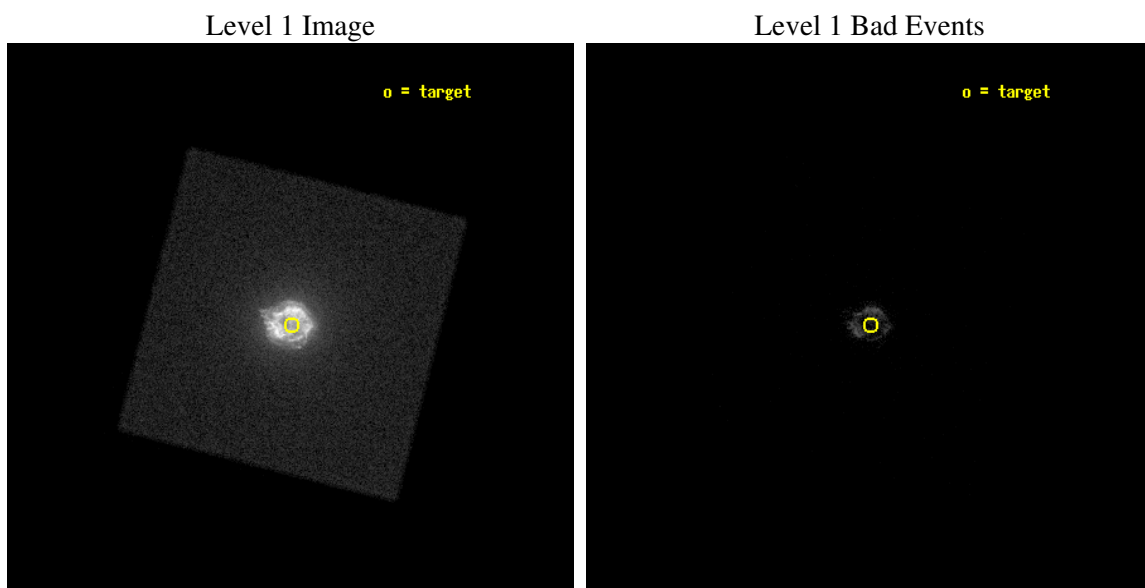
seq_num	590260
obs_id	2871
title	AO3A CALIBRATION OBSERVATIONS THE STANDARD CANDLES CAS A AND G21.5-09
observer	Dr. CXC Calibration
object	CAS A [HRC-I, Offsets=0,0,0]
ra_targ	350.8575
dec_targ	58.814833
ra_nom	350.86194504858
dec_nom	58.811448699312
roll_nom	329.33806373425
revision	3
ontime	4981.7564509809
livetime	4921.3727207569
l2events	581982



2 OBI

2.1 OBI

2.1.1 Images



2.1.2 Parameters

obi_num	1
ascdsver	7.6.11.2
caldbver	3.4.1
date	2007-11-21T20:08:21
revision	3

sched_exp_time	5000.000000
ontime	4981.7564509809
l1events	701722

2.1.3 Events

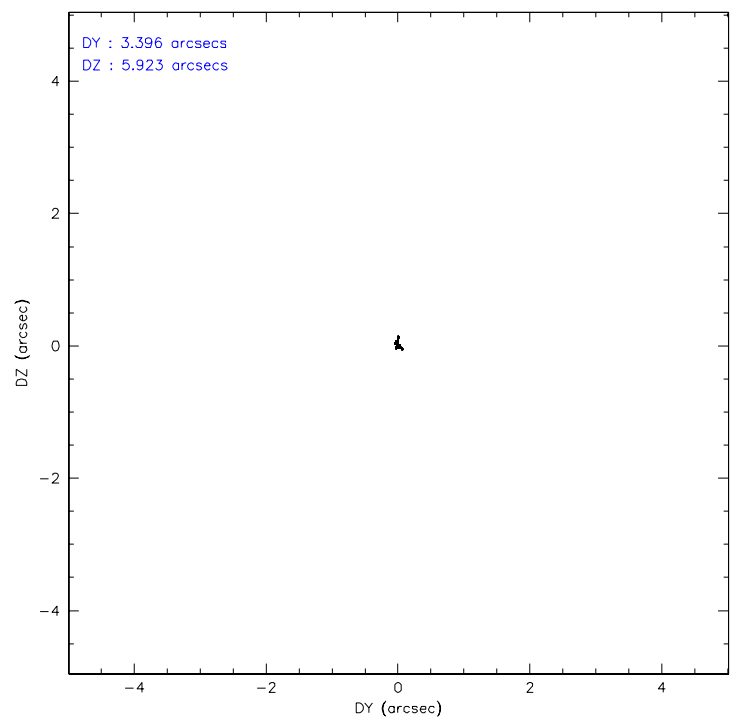
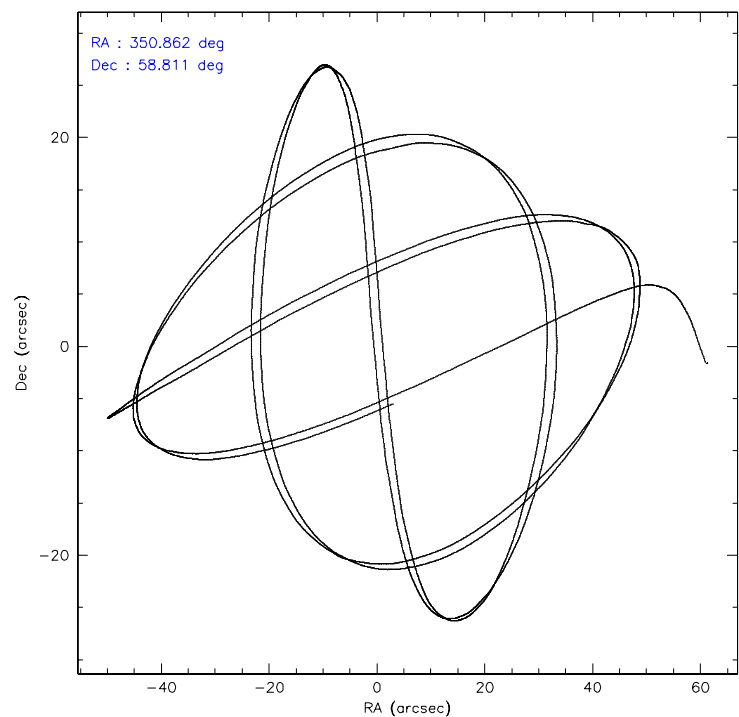
Level 1 Events

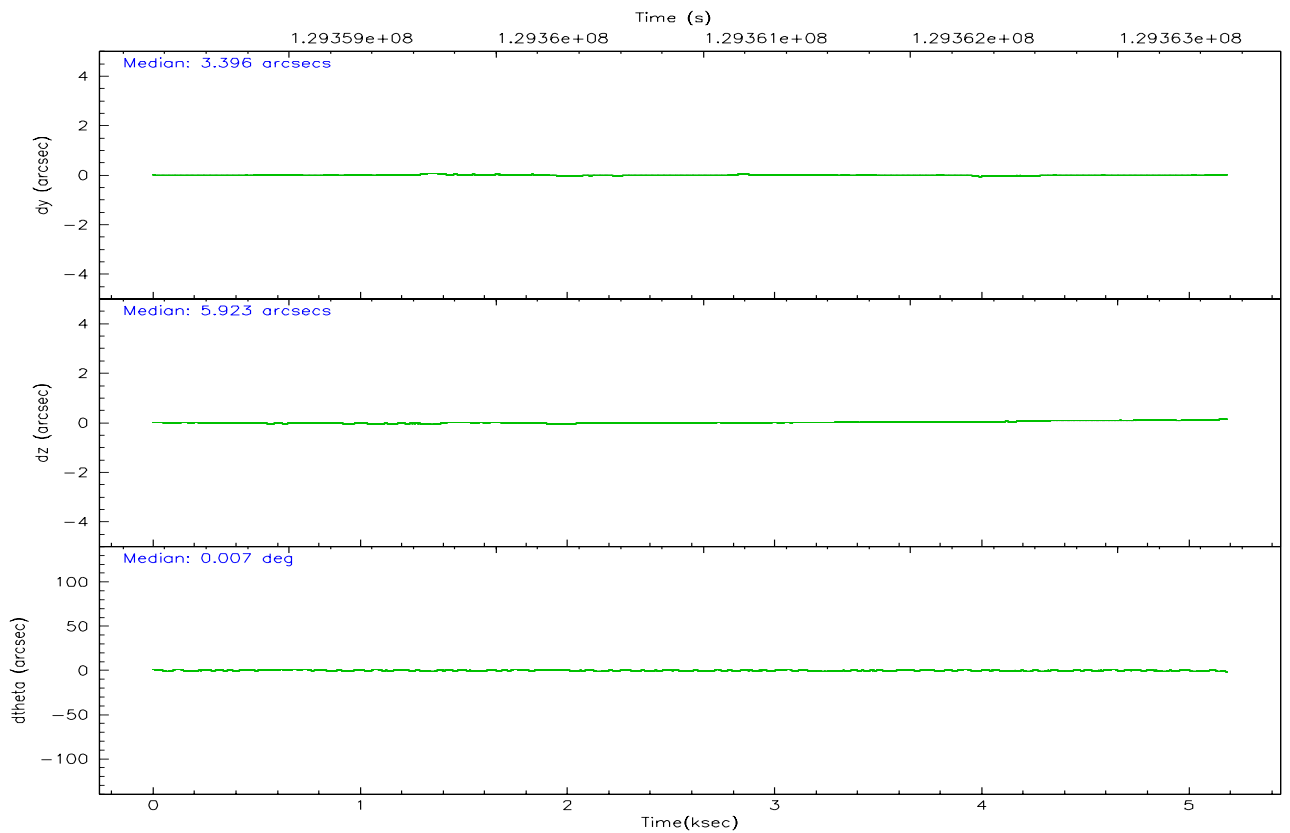
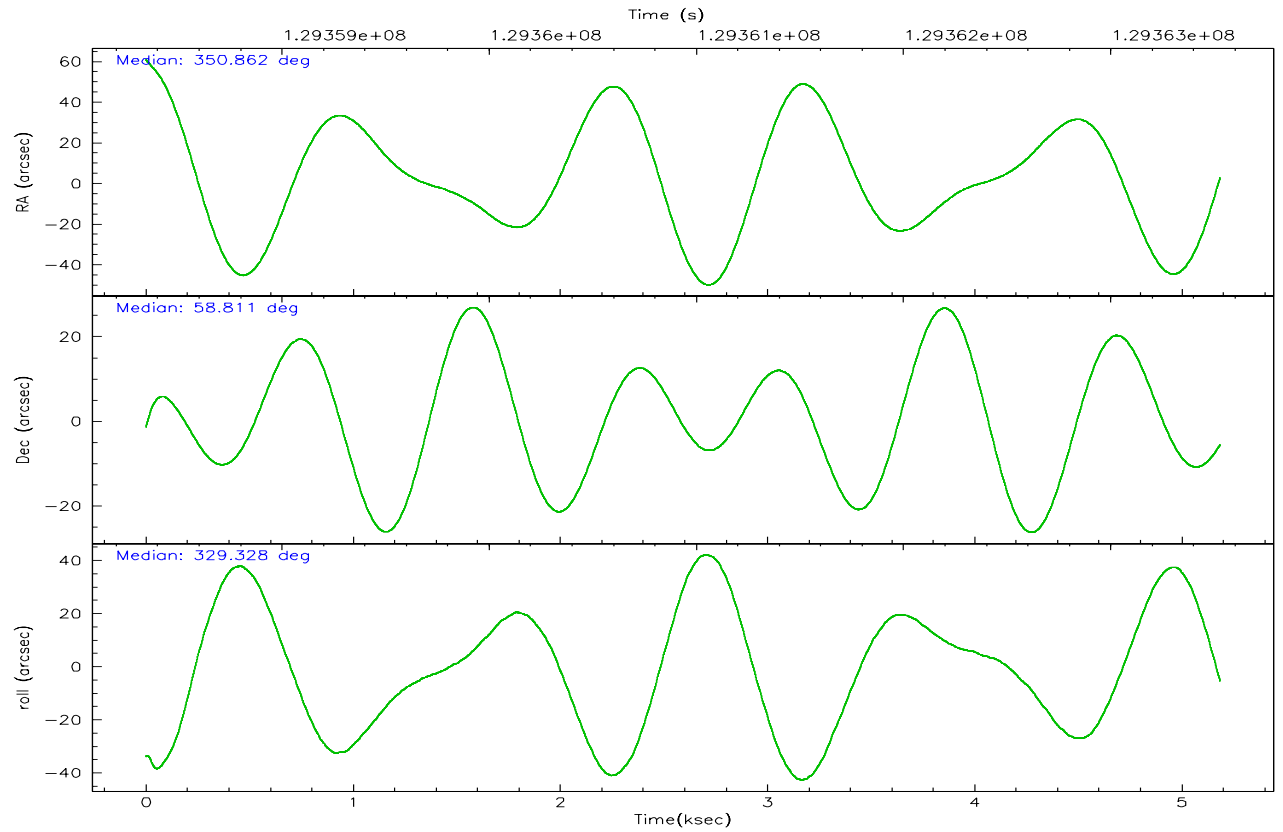
	segment 0
level 1 events	701722
rejected events	9208
rejected %	1%

2.2 Compared Parameters

Parameter	Planned	Actual	Parameter	Planned	Actual
Instrument	HRC	HRC	Obspar format version number	6	6
Detector	HRC-I	HRC-I	Obspar file type	PREDICTED	ACTUAL
Grating	NONE	NONE	Obspar update status	NONE	UPDATED
Data mode	OBSERVING	OBSERVING			
Observation mode	POINTING	POINTING			
Pointing RA	350.809973	350.8619450485843			
Pointing Dec	58.811164	58.8114486993116			
Pointing Roll	329.477985	329.338063734252			
Window start time	126230464.184000	126230464.184000			
Window stop time	131241664.184000	131241664.184000			
SIM focus pos (mm)	-1.040293	-1.038866356238299			
SIM defocus (mm)	0	0.001426264420575141			
SIM translation stage pos (mm)	126.985494	126.9854943052878			
SIM translation stage offset (mm)	0	-5.413686238853188e-06			
Observation start time	129358530.184000	129357764.96272			
Observation start date	2002-02-06T04:54:26	2002-02-06T04:42:44			
Observation end time	129363530.184000	129363797.60046			
Observation end date	2002-02-06T06:17:46	2002-02-06T06:23:17			

2.3 Aspect



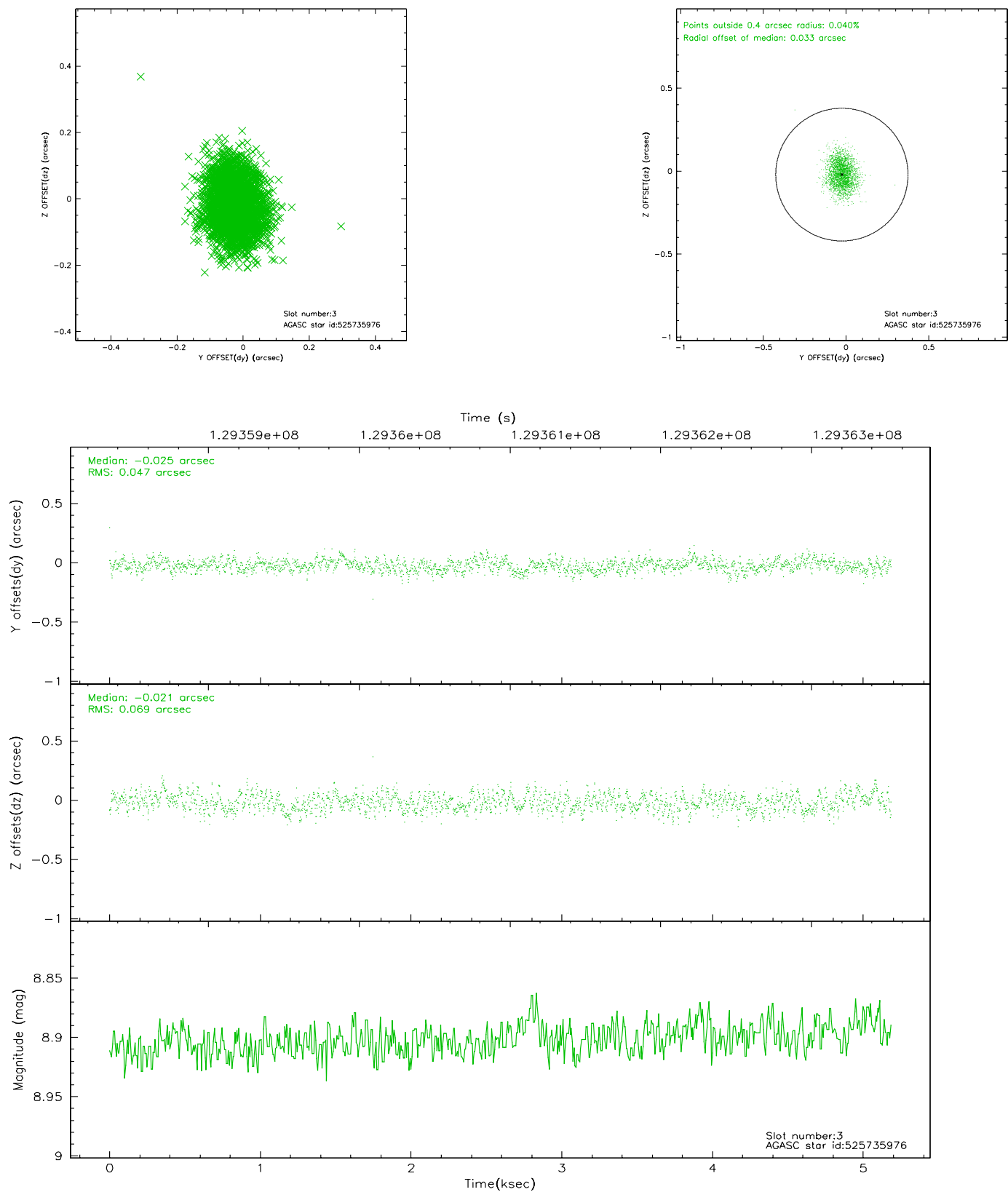


Slot Statistics

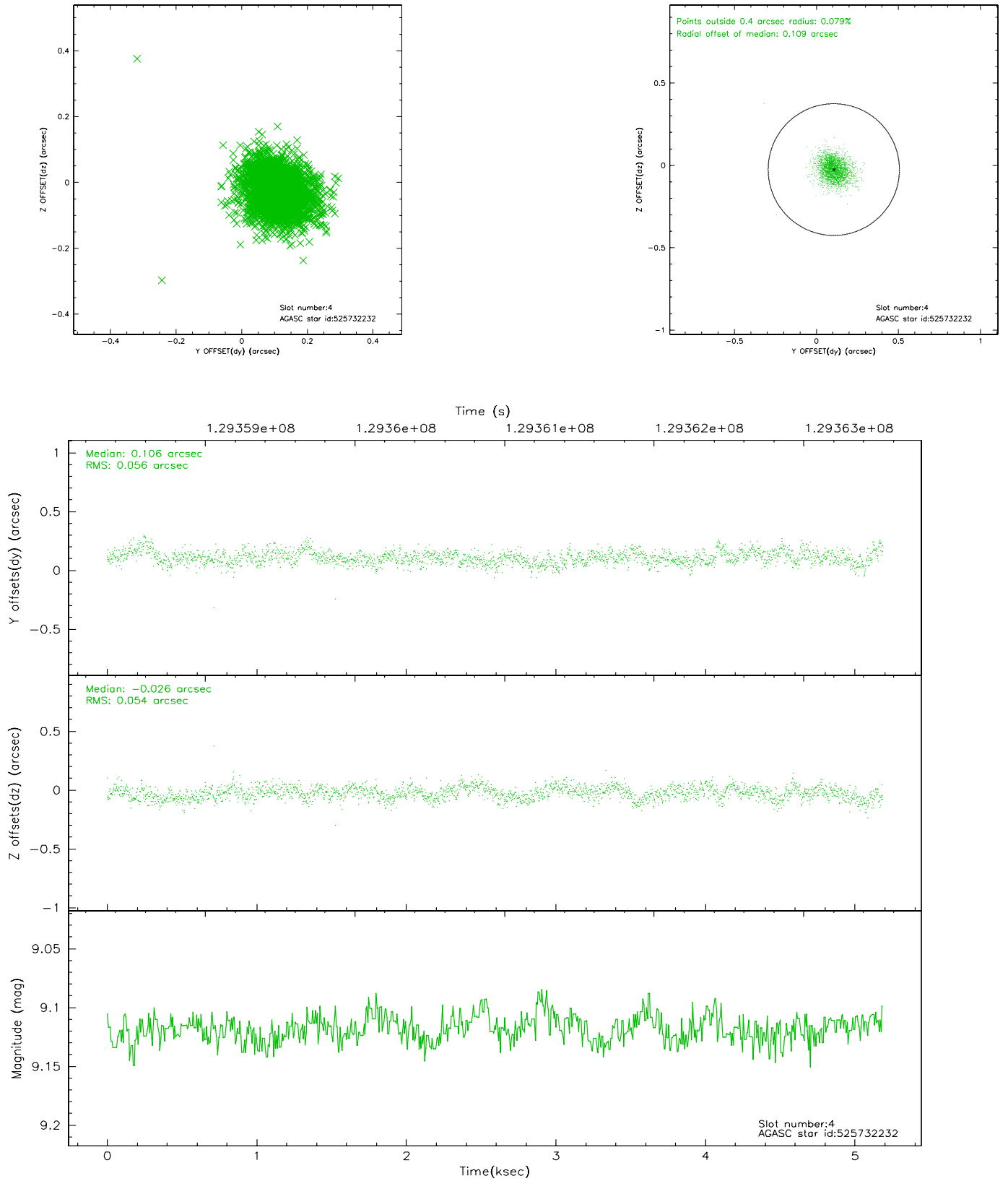
slot	status	id	mag	n_pts	med_dy	med_dz	dr1	dr2	ra	dec	mean_y	mean_z
0	FID	HRC-I-1	6.96	1265	0.009	0.030	0.007	0.011	0.000000	0.000000	-758.84	-1293.80
1	FID	HRC-I-2	7.00	1265	0.067	-0.039	0.006	0.010	0.000000	0.000000	853.25	-1296.42
2	FID	HRC-I-3	7.04	1265	0.043	-0.080	0.005	0.010	0.000000	0.000000	-1186.67	1009.62
3	GUIDE	525735976	8.90	2529	-0.025	-0.021	0.089	0.142	350.142956	58.277622	-115.56	-2290.40
4	GUIDE	525732232	9.12	2530	0.106	-0.026	0.081	0.133	351.669550	58.757012	1476.07	655.39
5	GUIDE	525736400	9.08	2531	0.014	0.079	0.079	0.129	350.974563	59.175145	-404.33	1283.63
6	GUIDE	525609504	9.07	2530	0.000	0.018	0.094	0.152	349.896632	58.356658	-661.37	-2274.96
7	GUIDE	525737208	9.39	2527	-0.098	-0.049	0.100	0.156	351.154109	59.407897	-550.02	2171.20

2.4 Star Slots

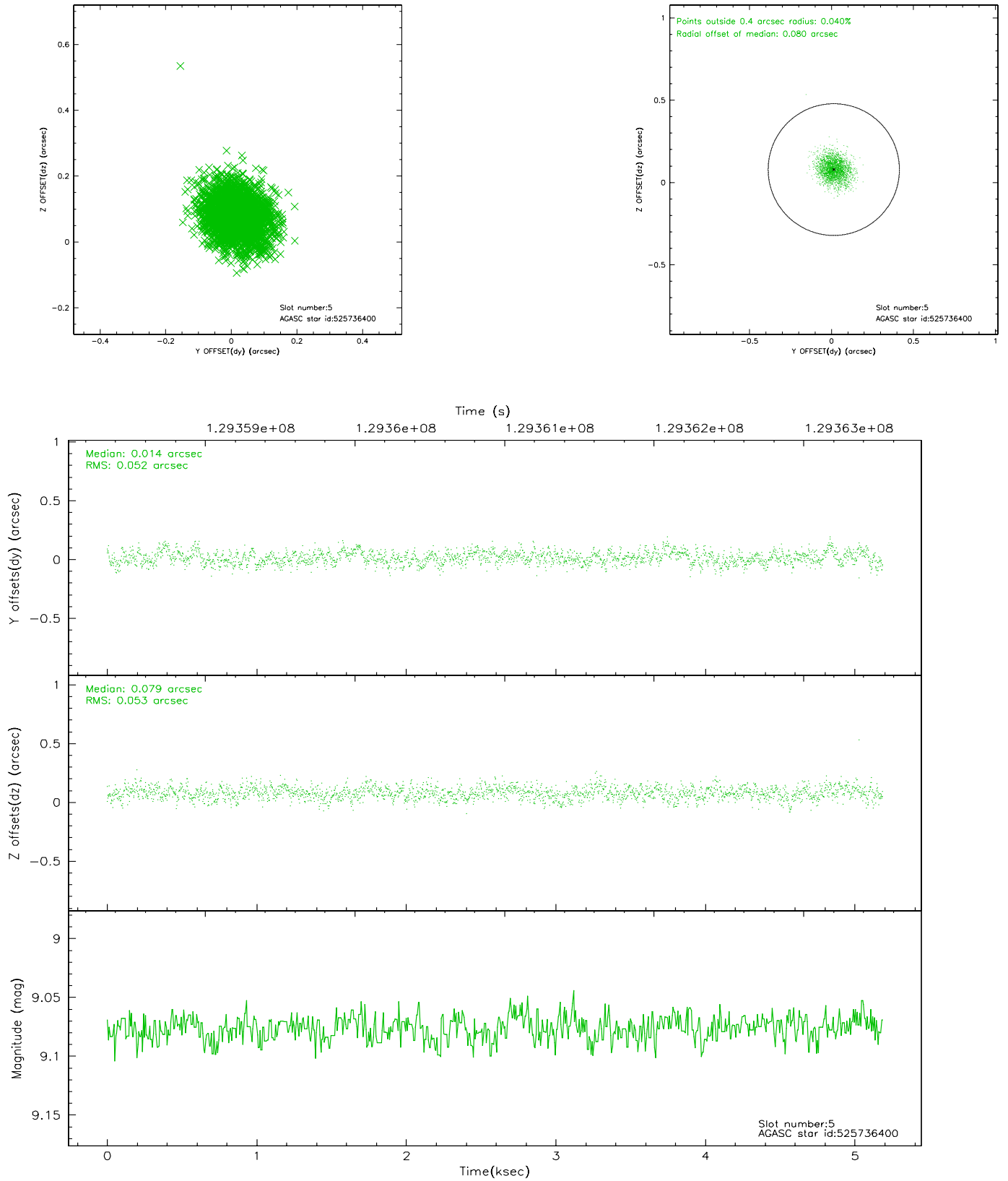
2.4.1 Slot 3



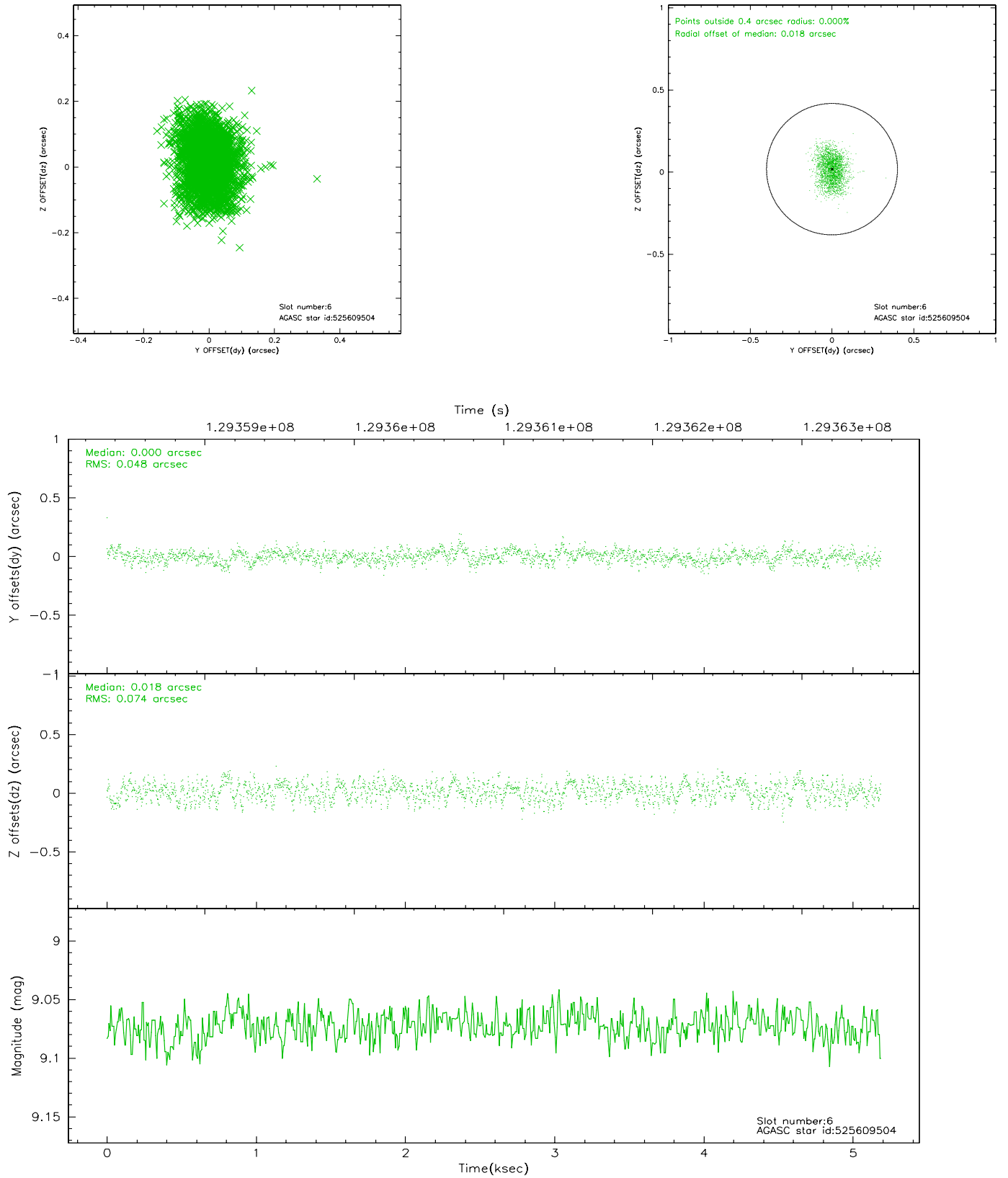
2.4.2 Slot 4



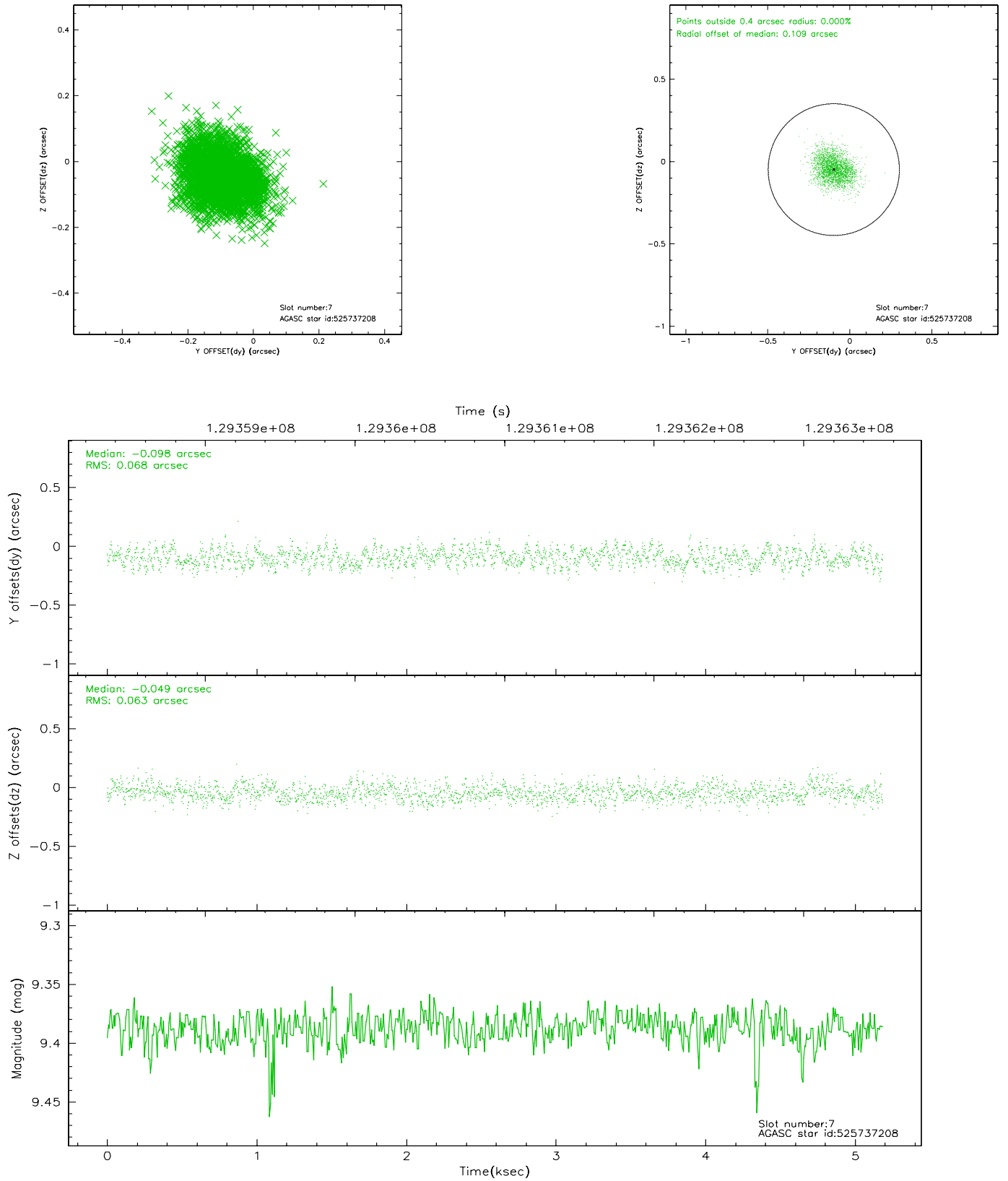
2.4.3 Slot 5



2.4.4 Slot 6

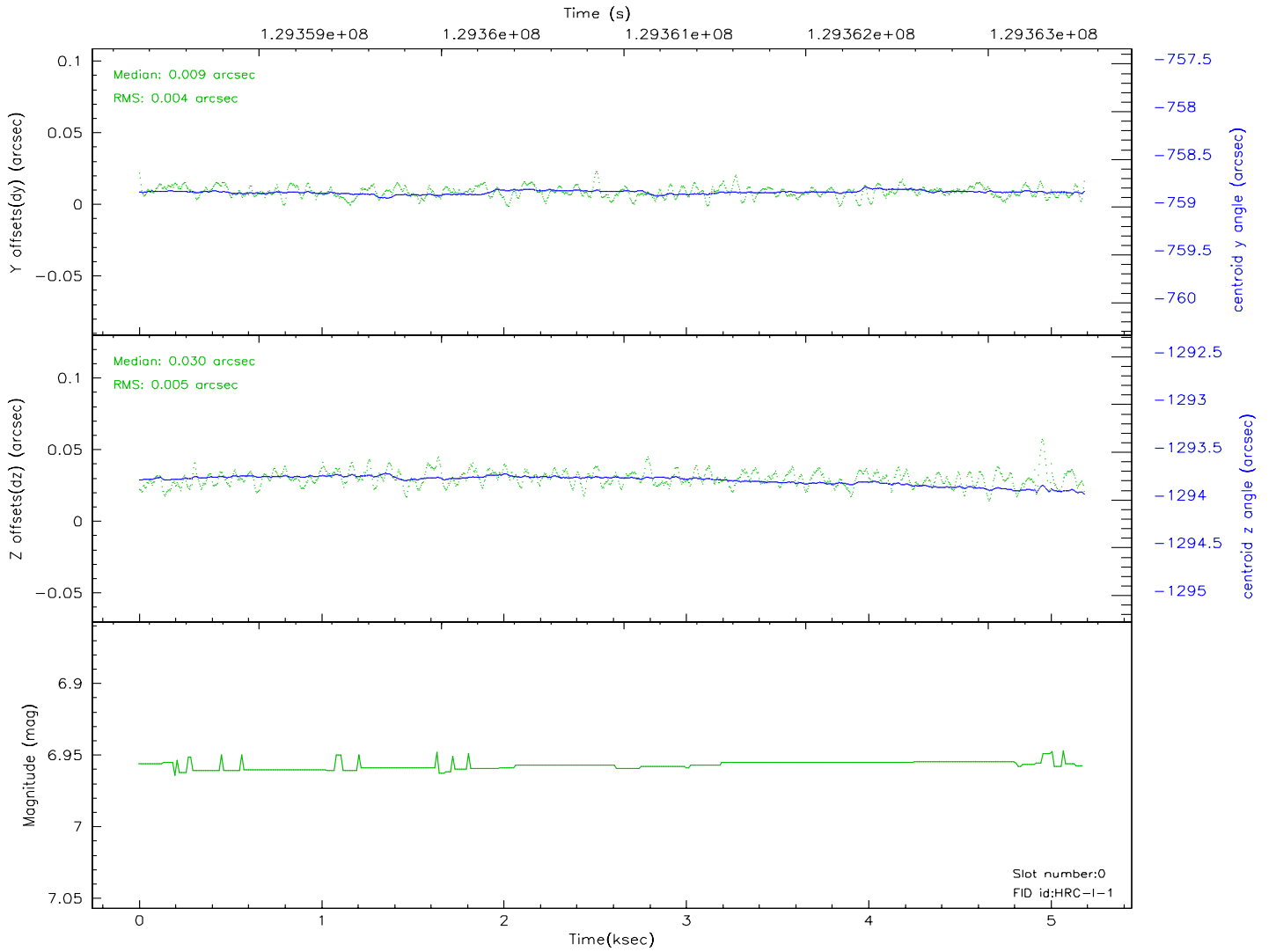
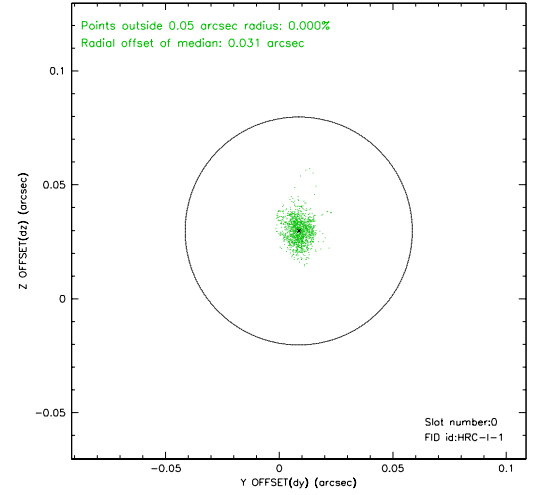
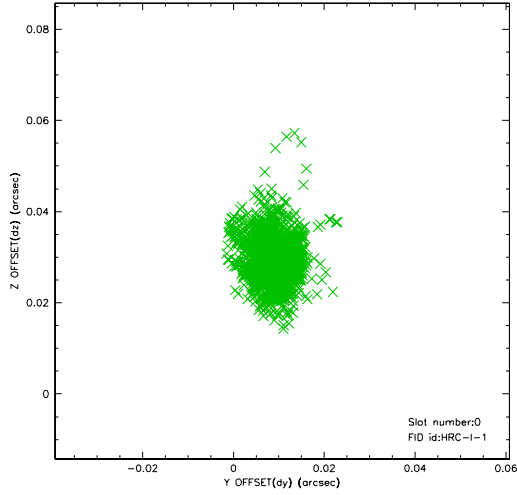


2.4.5 Slot 7

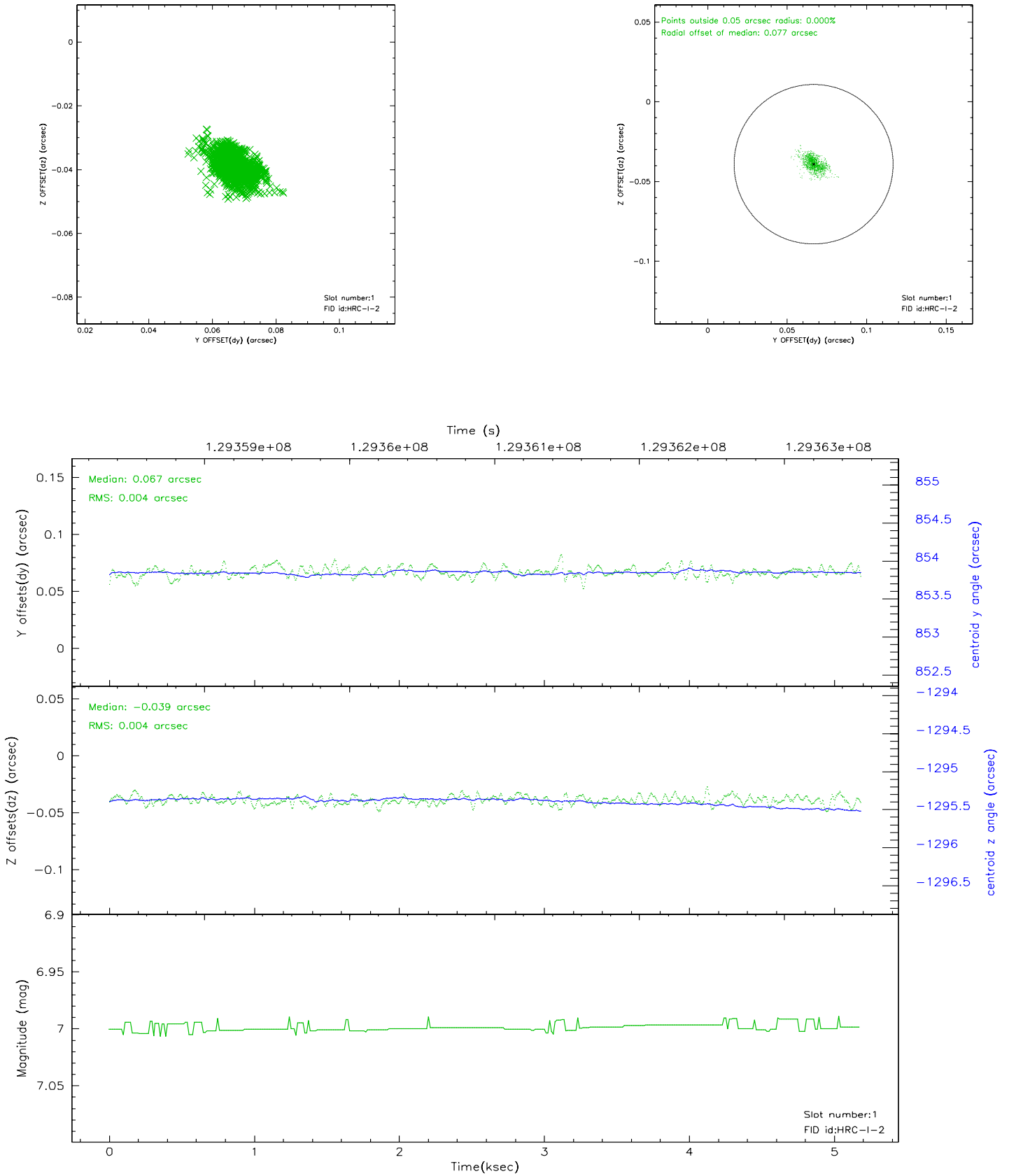


2.5 FID Slots

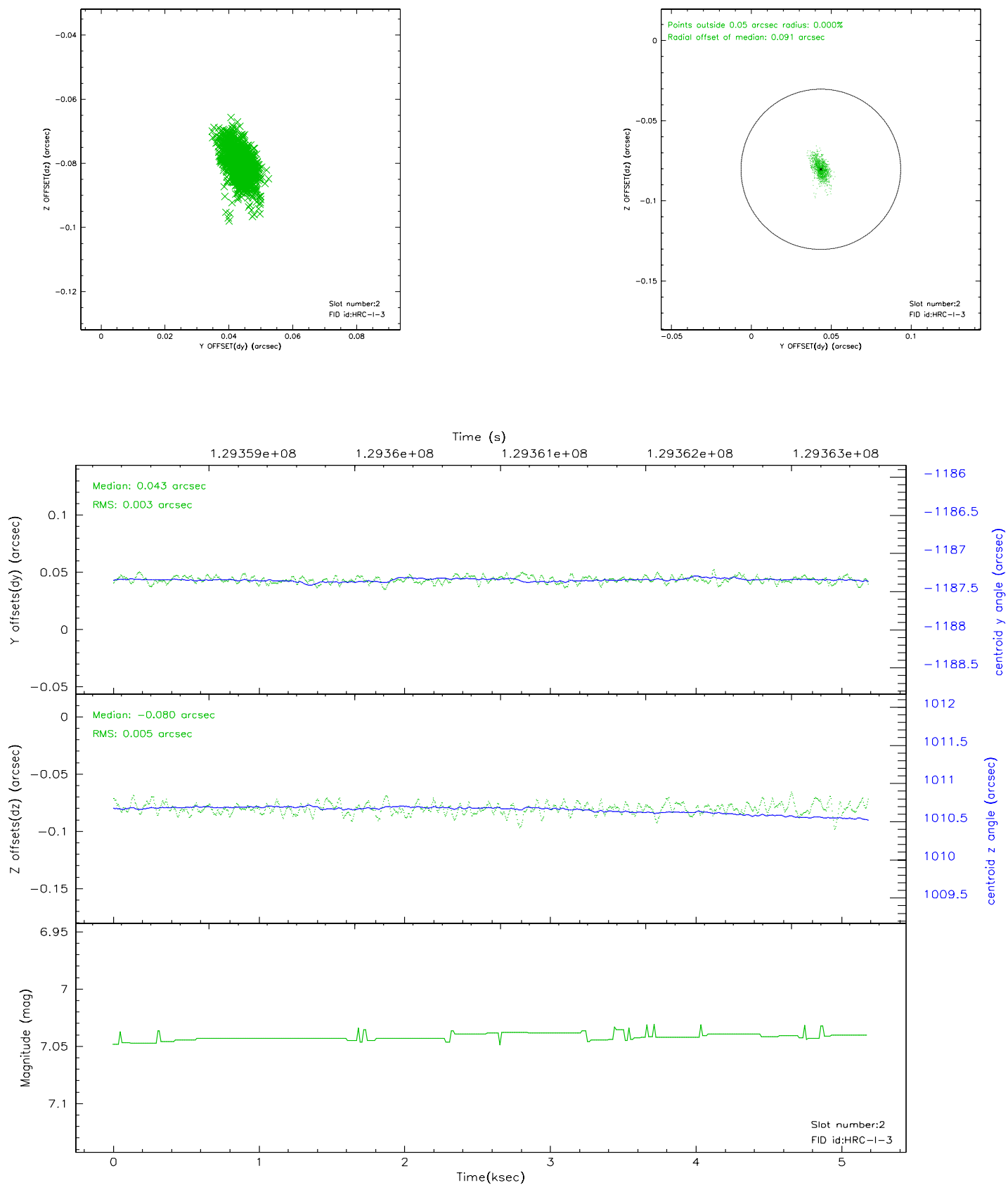
2.5.1 Slot 0



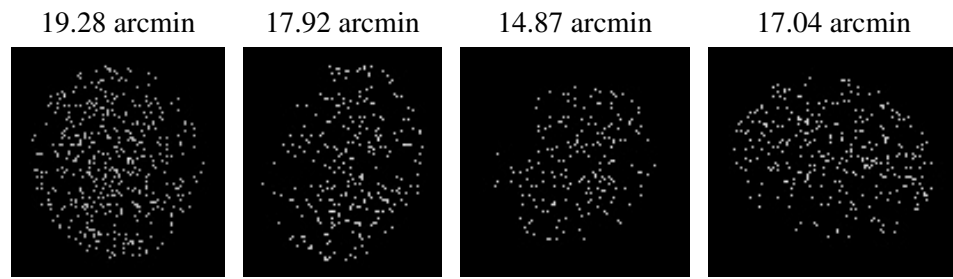
2.5.2 Slot 1



2.5.3 Slot 2



3 Point Sources



A Summary

A.1 Status

V&V Scientist	Jen Lauer
V&V Date (YYYY-MM-DD)	2007.12.04
V&V Edition	1
V&V Disposition and Status	OK
V&V Charge Time	4.981

A.2 Comments

Window constraint met.

The current observation has been reprocessed as part of Repro III ('C' supplement) the purpose of which is to update all HRC-I ObsIDs since Jan 2000 to the latest calibrations available for that configuration. Specifically, we are updating the DEGAP solution and the Gain Maps applied. For more information see the Repro IIIC web page at

<http://asc.harvard.edu/cda/repro3.html#IIIC>

and the associated links.