

V&V Reference Report

L2 ASCDS Version : 7.6.8.1

Observation 2869 - L2 Version 001
Chandra X-Ray Center

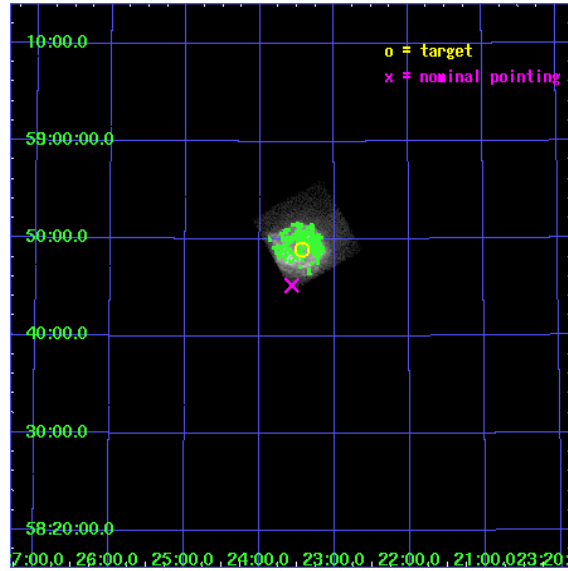
L2 Processing Date : Aug 31 2006

Contents

| | | |
|----------|-------------------------------|-----------|
| 1 | Front | 2 |
| 2 | OBI | 3 |
| 2.1 | OBI | 3 |
| 2.1.1 | Images | 3 |
| 2.1.2 | Bias | 3 |
| 2.1.3 | Parameters | 4 |
| 2.1.4 | Events | 4 |
| 2.2 | Compared Parameters | 5 |
| 2.3 | Aspect | 6 |
| 2.4 | Star Slots | 9 |
| 2.4.1 | Slot 3 | 9 |
| 2.4.2 | Slot 4 | 10 |
| 2.4.3 | Slot 5 | 11 |
| 2.4.4 | Slot 6 | 12 |
| 2.4.5 | Slot 7 | 13 |
| 2.5 | FID Slots | 14 |
| 2.5.1 | Slot 0 | 14 |
| 2.5.2 | Slot 1 | 15 |
| 2.5.3 | Slot 2 | 16 |
| 3 | Point Sources | 17 |
| A | Summary | 18 |
| A.1 | Status | 18 |
| A.2 | Comments | 18 |

1 Front

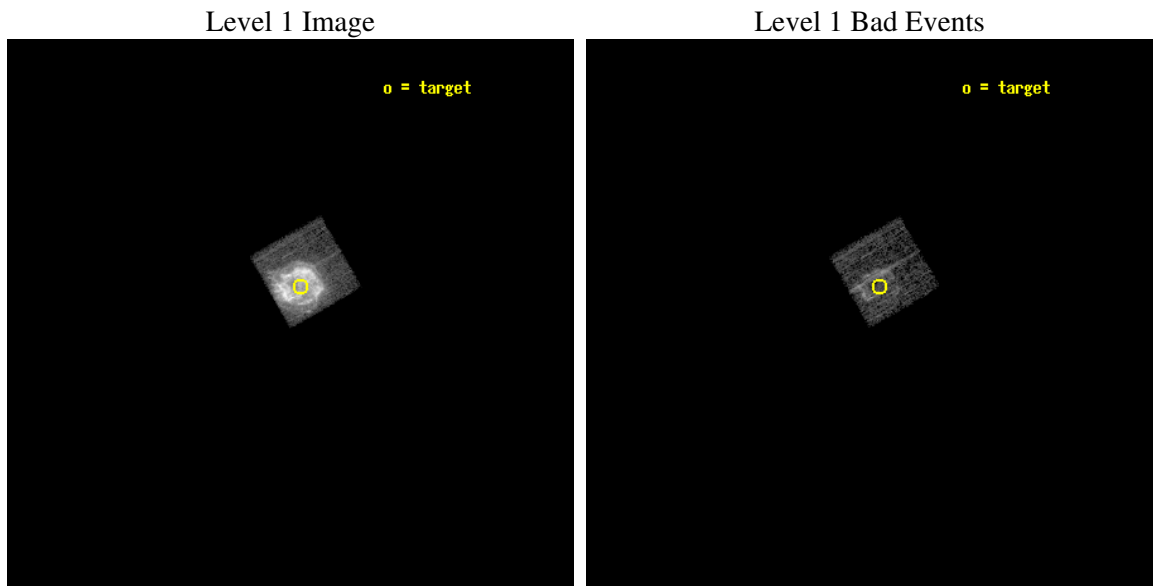
| | |
|----------|---|
| seq_num | 590258 |
| obs_id | 2869 |
| title | AO3A CALIBRATION OBSERVATIONS THE STANDARD CANDLES CAS A AND G21.5-09 |
| observer | Dr. CXC Calibration |
| object | CAS A [Chip I3, T=120, Offsets=-2,2,0] |
| dtcycle | 0 |
| cycle | P |
| ra_targ | 350.8575 |
| dec_targ | 58.814833 |
| ra_nom | 350.89239116913 |
| dec_nom | 58.754206804277 |
| roll_nom | 330.24246350631 |
| revision | 2 |
| ontime | 1439.8876201212 |
| livetime | 1421.654896079 |
| ontime0 | 1955.2000018209 |
| ontime1 | 1955.2000018209 |
| ontime2 | 1955.2000018209 |
| ontime3 | 1439.8876201212 |
| ontime6 | 1955.2000018209 |
| ontime7 | 1955.2000018209 |
| l2events | 308159 |



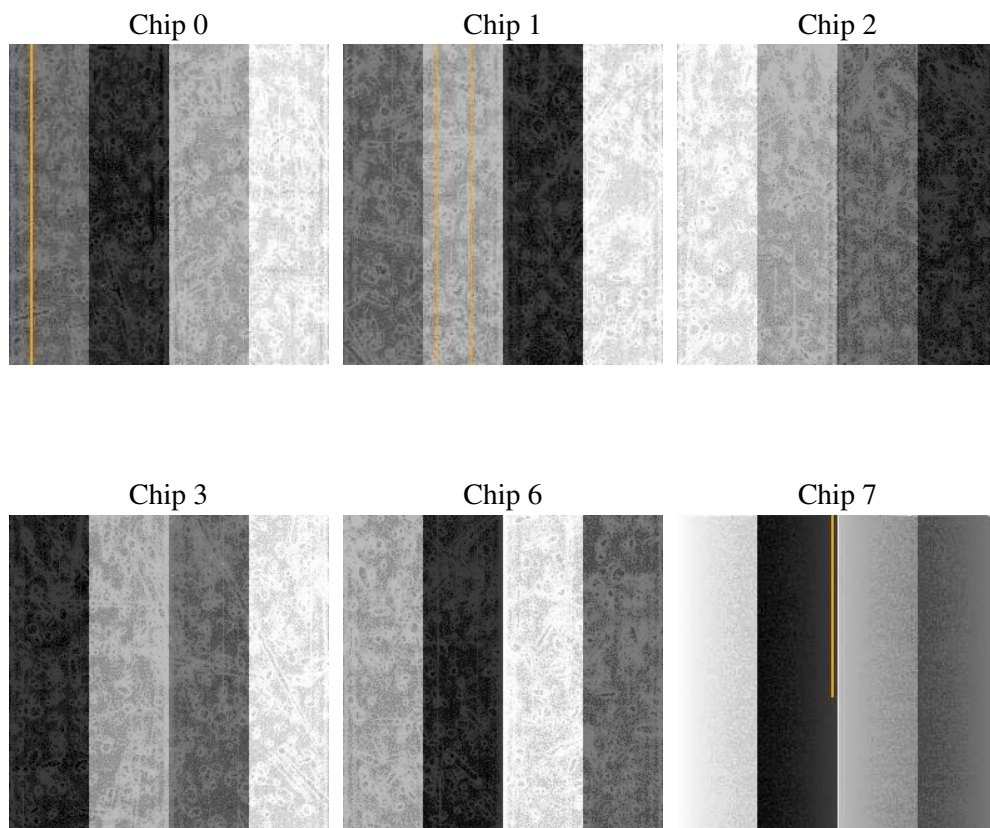
2 OBI

2.1 OBI

2.1.1 Images



2.1.2 Bias



2.1.3 Parameters

| | |
|----------|---------------------|
| obi_num | 1 |
| ascdsver | 7.6.8.1 |
| caldsver | 3.2.3 |
| date | 2006-08-31T10:56:57 |
| revision | 2 |

| | |
|----------------|-----------------|
| sched_exp_time | 2000.000000 |
| ontime | 1445.4915372729 |
| ontime0 | 1960.8039189726 |
| ontime1 | 1960.8039189726 |
| ontime2 | 1960.8039189726 |
| ontime3 | 1445.4915372729 |
| ontime6 | 1960.8039189726 |
| ontime7 | 1960.8039189726 |
| l1events | 372661 |

2.1.4 Events

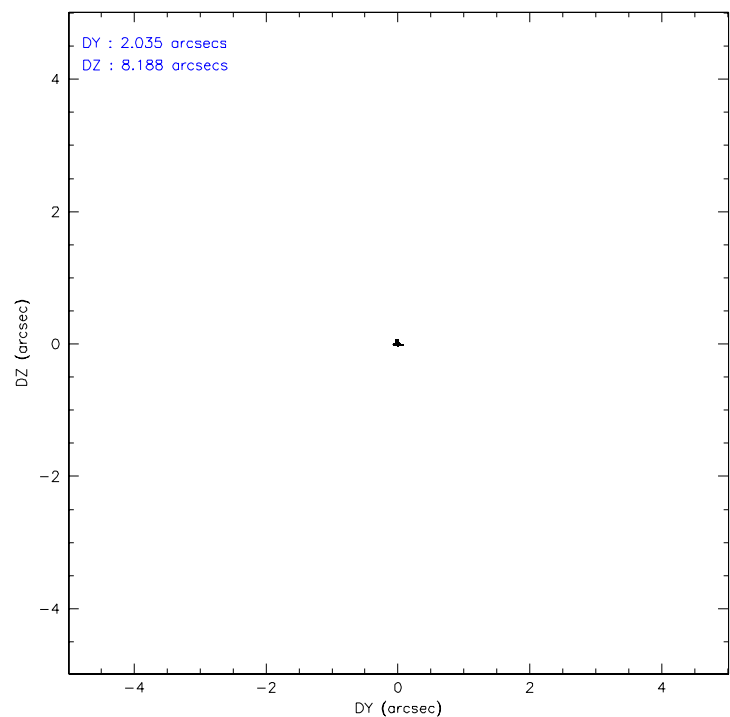
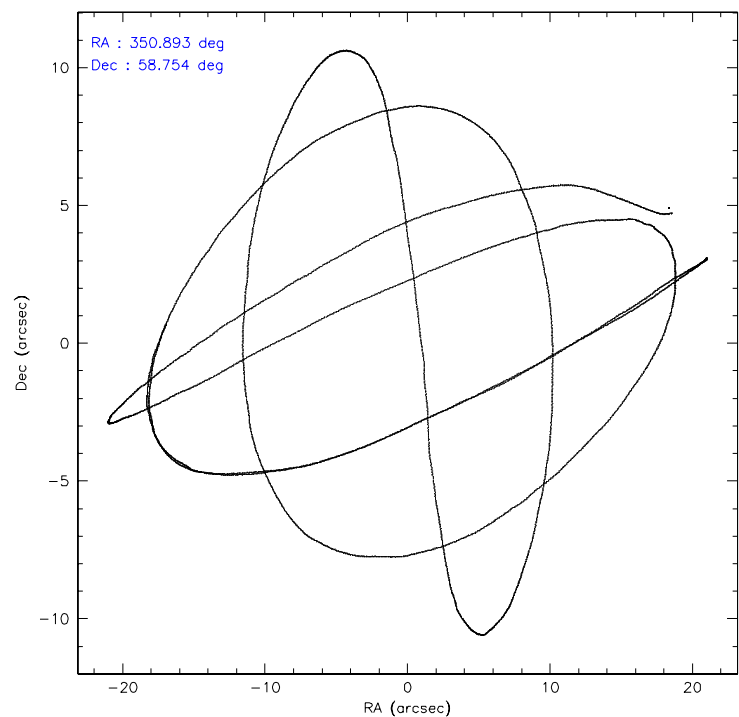
| | ccd 0 | ccd 1 | ccd 2 | ccd 3 | ccd 6 | ccd 7 |
|--------------------|----------|----------|----------|--------|----------|----------|
| level 1 events | 0 | 0 | 0 | 372661 | 0 | 0 |
| rejected events | 0 | 0 | 0 | 51141 | 0 | 0 |
| rejected % | 0% | 0% | 0% | 13% | 0% | 0% |

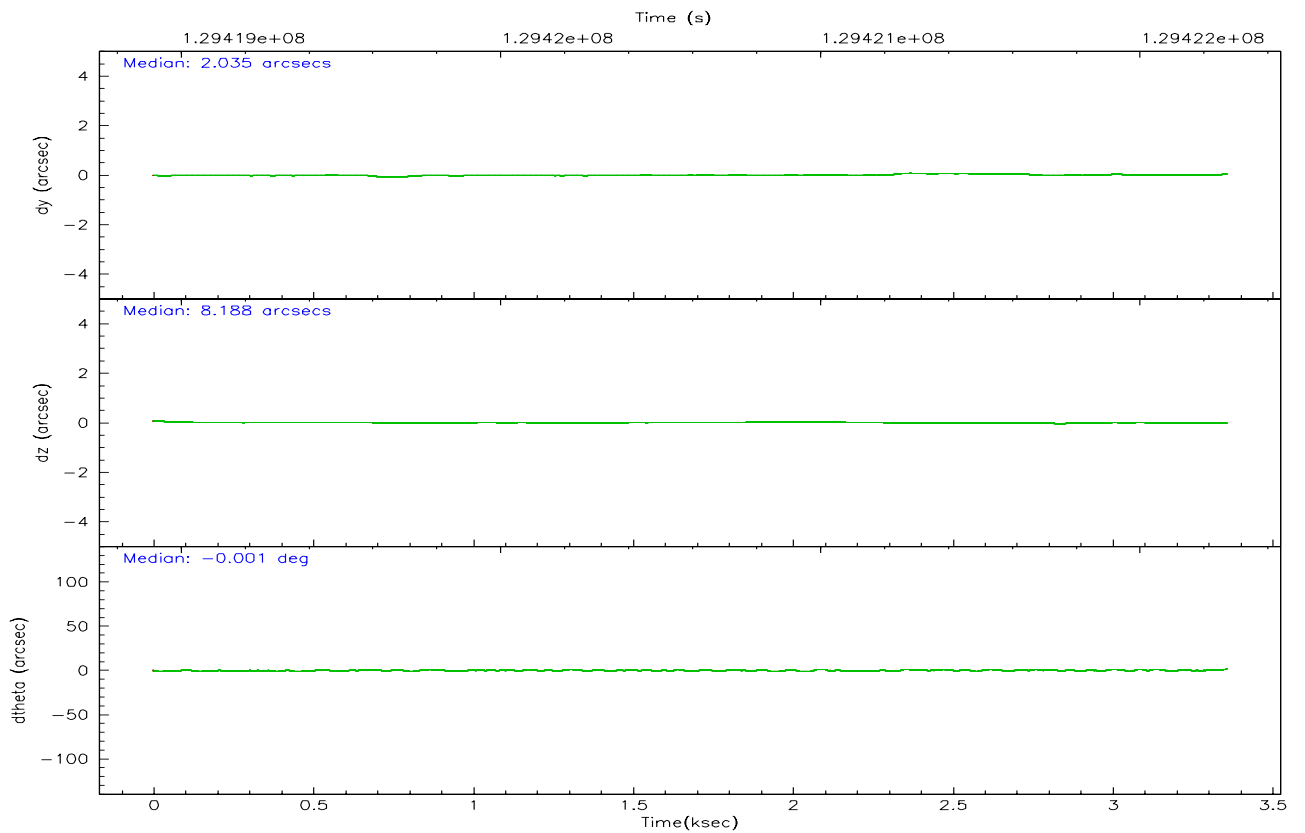
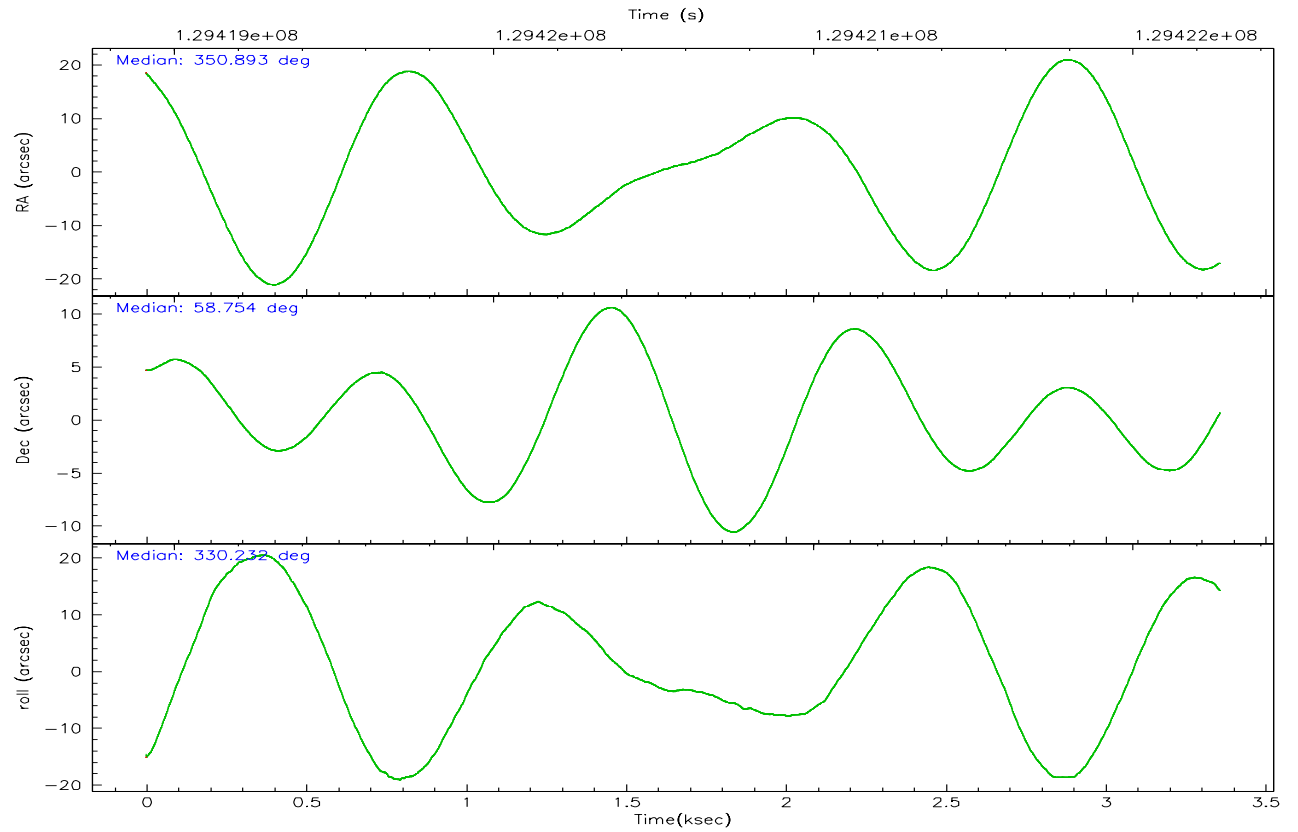
| | ccd 0 | ccd 1 | ccd 2 | ccd 3 | ccd 6 | ccd 7 |
|-------------------|----------|----------|----------|--------|----------|----------|
| grade 0 events | 0 | 0 | 0 | 261616 | 0 | 0 |
| | 0% | 0% | 0% | 70% | 0% | 0% |
| grade 1 events | 0 | 0 | 0 | 4289 | 0 | 0 |
| | 0% | 0% | 0% | 1% | 0% | 0% |
| grade 2 events | 0 | 0 | 0 | 33713 | 0 | 0 |
| | 0% | 0% | 0% | 9% | 0% | 0% |
| grade 3 events | 0 | 0 | 0 | 10264 | 0 | 0 |
| | 0% | 0% | 0% | 2% | 0% | 0% |
| grade 4 events | 0 | 0 | 0 | 10274 | 0 | 0 |
| | 0% | 0% | 0% | 2% | 0% | 0% |
| grade 5 events | 0 | 0 | 0 | 2866 | 0 | 0 |
| | 0% | 0% | 0% | 0% | 0% | 0% |
| grade 6 events | 0 | 0 | 0 | 7124 | 0 | 0 |
| | 0% | 0% | 0% | 1% | 0% | 0% |
| grade 7 events | 0 | 0 | 0 | 42515 | 0 | 0 |
| | 0% | 0% | 0% | 11% | 0% | 0% |

2.2 Compared Parameters

| Parameter | Planned | Actual | Parameter | Planned | Actual |
|-----------------------------------|---------------------|-----------------------|---------------------------------|-----------|---------|
| Instrument | ACIS | ACIS | Obspar format version number | 6 | 6 |
| Detector | ACIS-012367 | ACIS-012367 | Obspar file type | PREDICTED | ACTUAL |
| Grating | NONE | NONE | Obspar update status | NONE | UPDATED |
| Data mode | FAINT | FAINT | On-chip summing requested | N | N |
| Observation mode | POINTING | POINTING | Subarray requested | NONE | NONE |
| Pointing RA | 350.839648 | 350.8923911691288 | Alternating exposures requested | N | N |
| Pointing Dec | 58.754008 | 58.75420680427708 | Primary exposure time | 0.000000 | 3.2 |
| Pointing Roll | 330.078878 | 330.2424635063134 | | | |
| Window start time | 126230464.184000 | 126230464.184000 | | | |
| Window stop time | 131241664.184000 | 131241664.184000 | | | |
| SIM focus pos (mm) | -0.782348 | -0.7809083437167272 | | | |
| SIM defocus (mm) | 0 | 0.001439871863259334 | | | |
| SIM translation stage pos (mm) | -233.592463 | -233.5874344608287 | | | |
| SIM translation stage offset (mm) | 0 | -0.005018542100998502 | | | |
| Observation start time | 129420270.184000 | 129418723.76518 | | | |
| Observation start date | 2002-02-06T22:03:26 | 2002-02-06T21:38:43 | | | |
| Observation end time | 129422270.184000 | 129422735.61534 | | | |
| Observation end date | 2002-02-06T22:36:46 | 2002-02-06T22:45:35 | | | |
| Read mode | TIMED | TIMED | | | |

2.3 Aspect



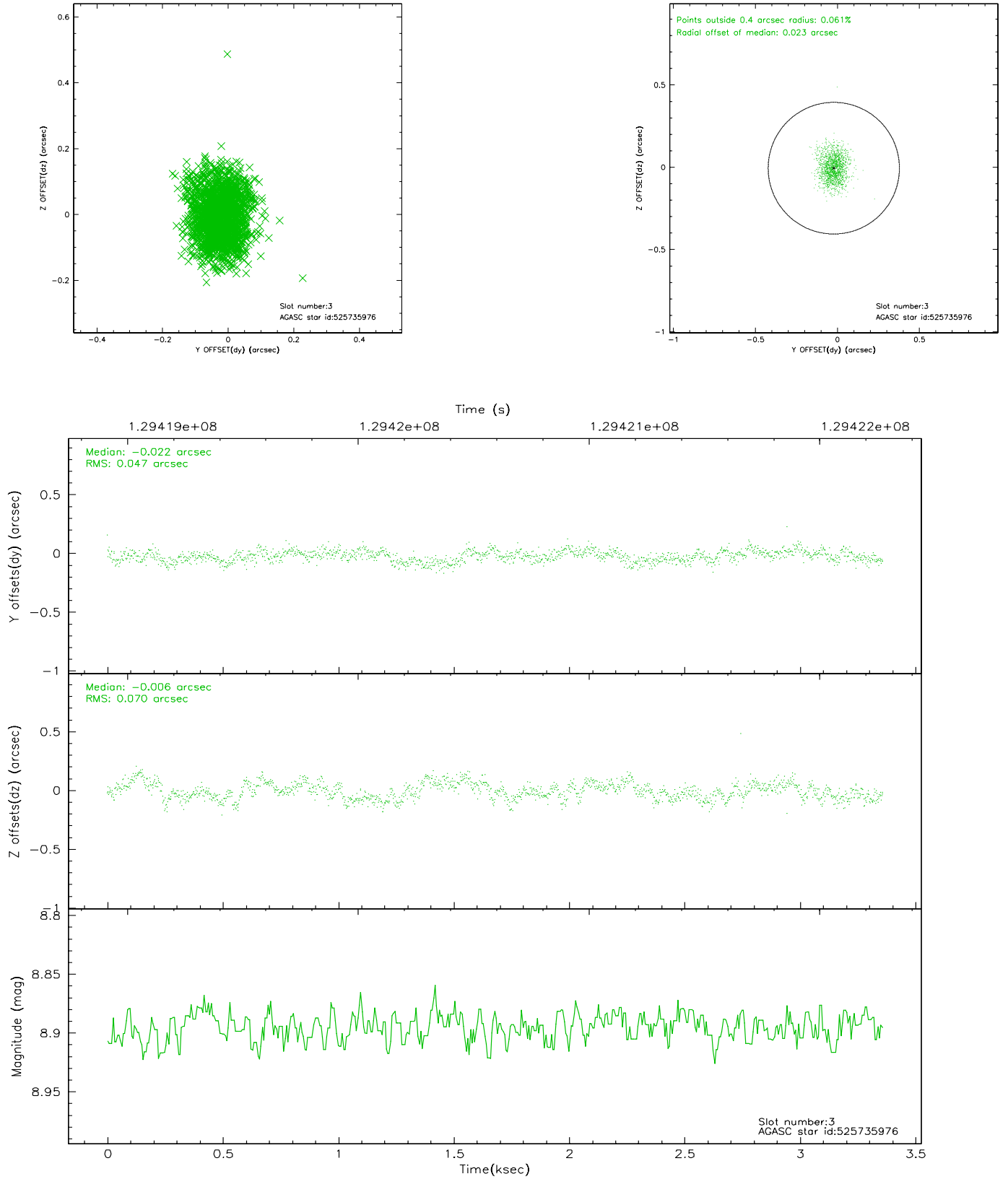


Slot Statistics

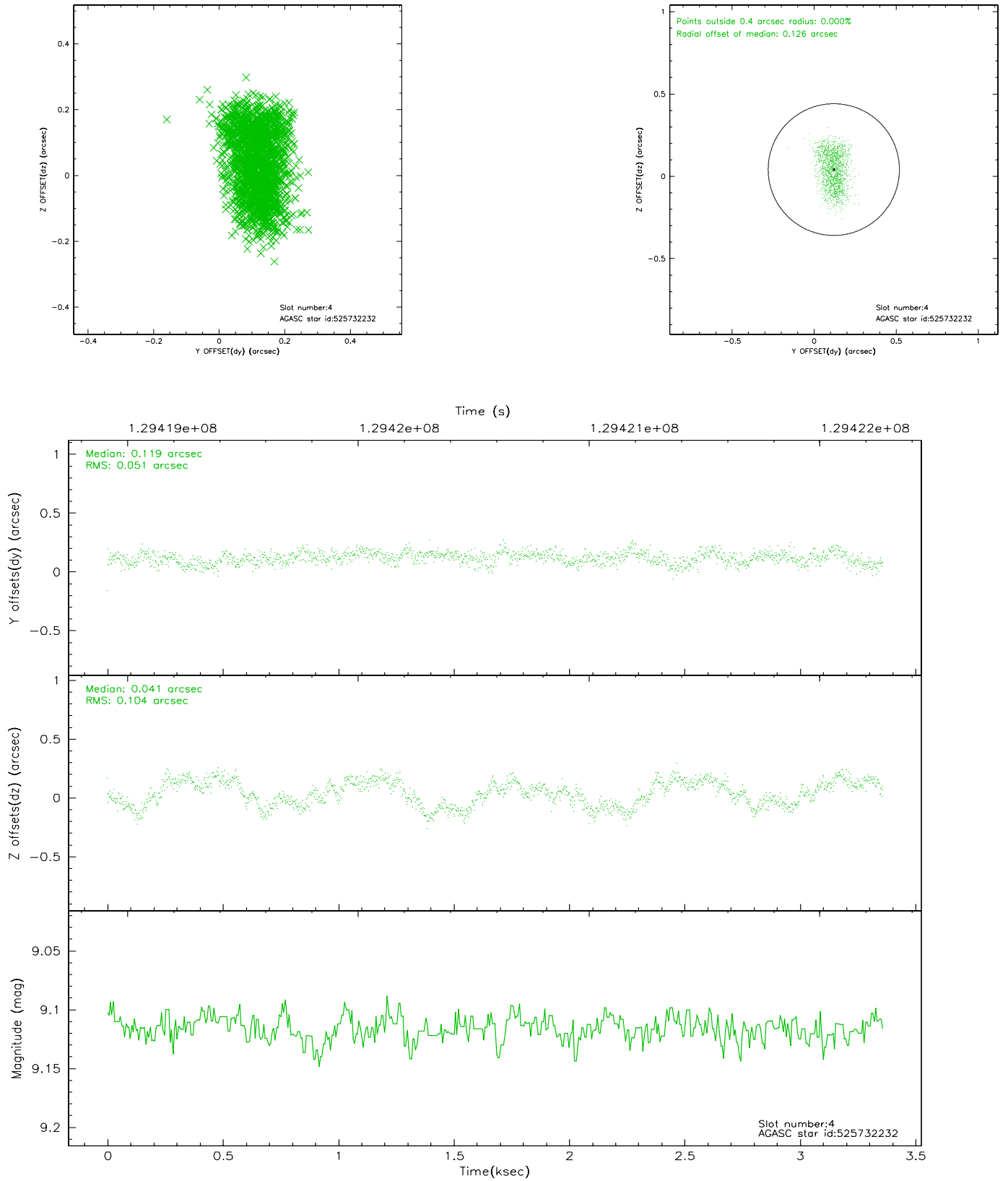
| slot | status | id | mag | n_pts | med_dy | med_dz | dr1 | dr2 | ra | dec | mean_y | mean_z |
|------|--------|-----------|------|-------|--------|--------|-------|-------|------------|-----------|----------|----------|
| 0 | FID | ACIS-I-1 | 7.24 | 819 | -0.061 | 0.103 | 0.006 | 0.010 | 0.000000 | 0.000000 | 937.71 | -831.52 |
| 1 | FID | ACIS-I-5 | 7.23 | 820 | 0.011 | 0.021 | 0.005 | 0.009 | 0.000000 | 0.000000 | -1809.25 | 1064.97 |
| 2 | FID | ACIS-I-6 | 7.26 | 820 | -0.042 | -0.053 | 0.006 | 0.010 | 0.000000 | 0.000000 | 401.26 | 1711.52 |
| 3 | GUIDE | 525735976 | 8.89 | 1638 | -0.022 | -0.006 | 0.090 | 0.145 | 350.142956 | 58.277622 | -290.42 | -2138.78 |
| 4 | GUIDE | 525732232 | 9.12 | 1640 | 0.119 | 0.041 | 0.127 | 0.195 | 351.669550 | 58.757012 | 1333.19 | 789.09 |
| 5 | GUIDE | 525609504 | 9.07 | 1640 | -0.022 | 0.036 | 0.083 | 0.137 | 349.896632 | 58.356658 | -835.07 | -2117.42 |
| 6 | GUIDE | 525732528 | 9.37 | 1627 | -0.067 | -0.039 | 0.119 | 0.189 | 351.607241 | 59.298932 | 239.42 | 2409.27 |
| 7 | GUIDE | 525737208 | 9.37 | 1637 | -0.001 | -0.035 | 0.106 | 0.171 | 351.154109 | 59.407897 | -675.63 | 2329.68 |

2.4 Star Slots

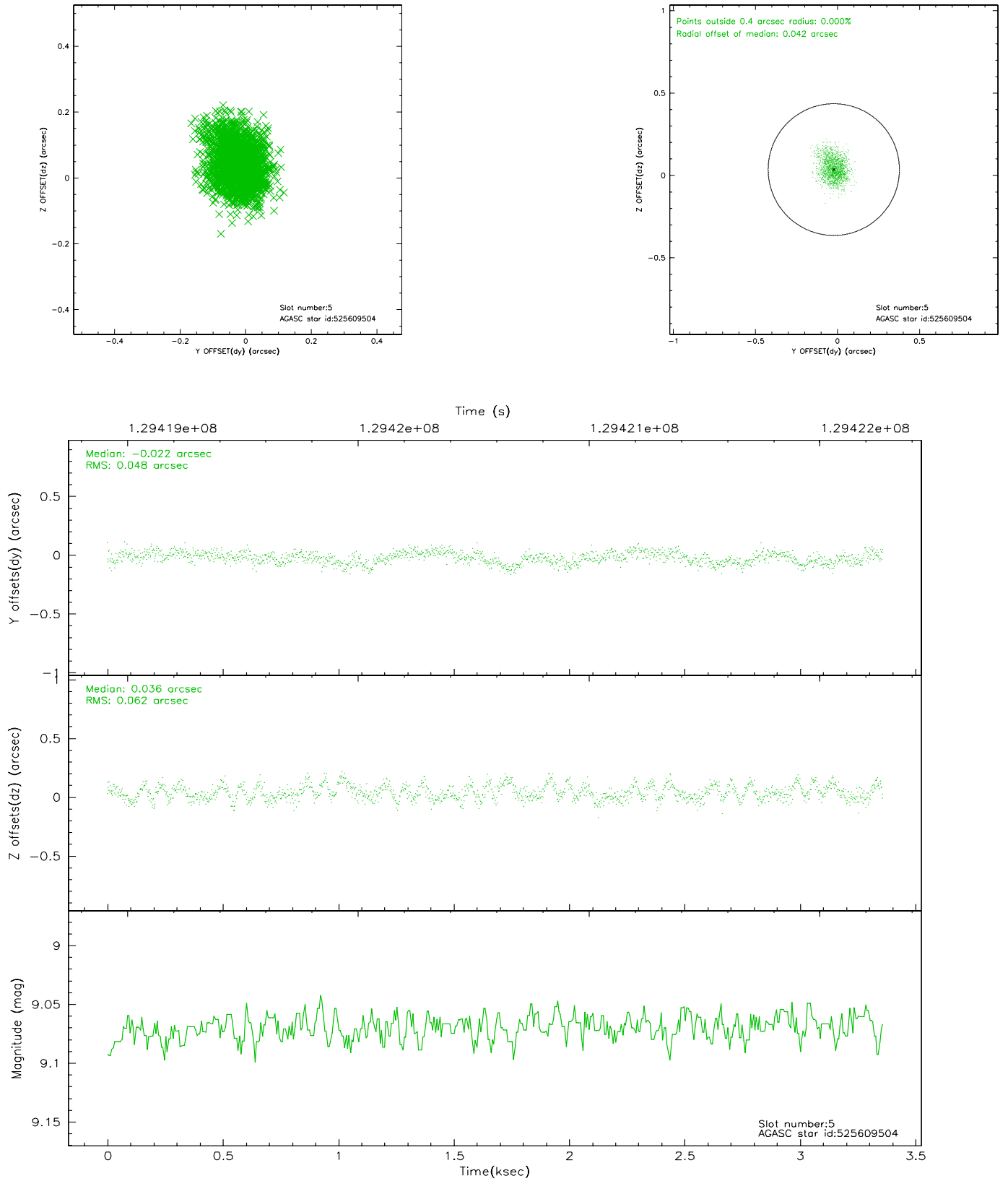
2.4.1 Slot 3



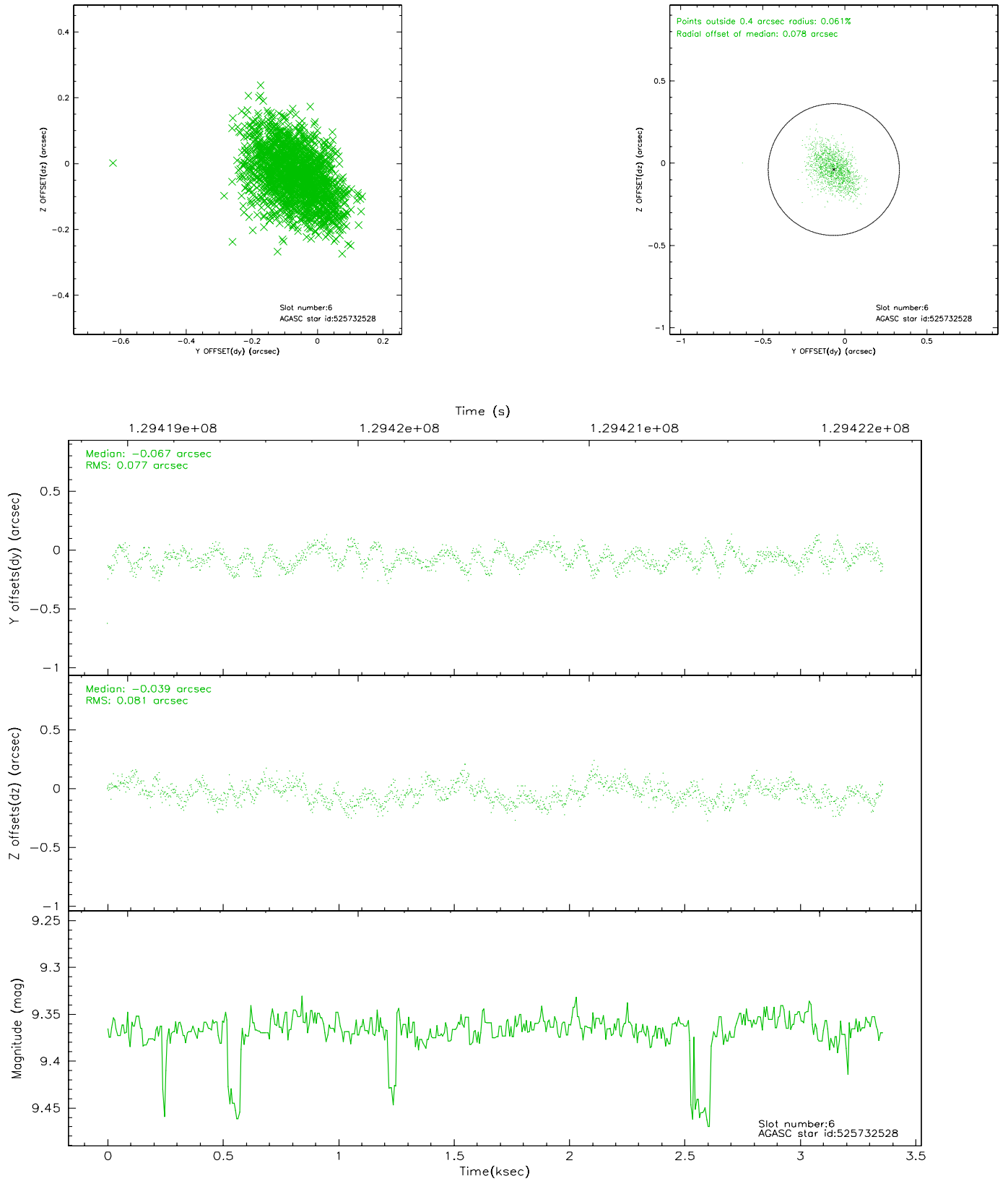
2.4.2 Slot 4



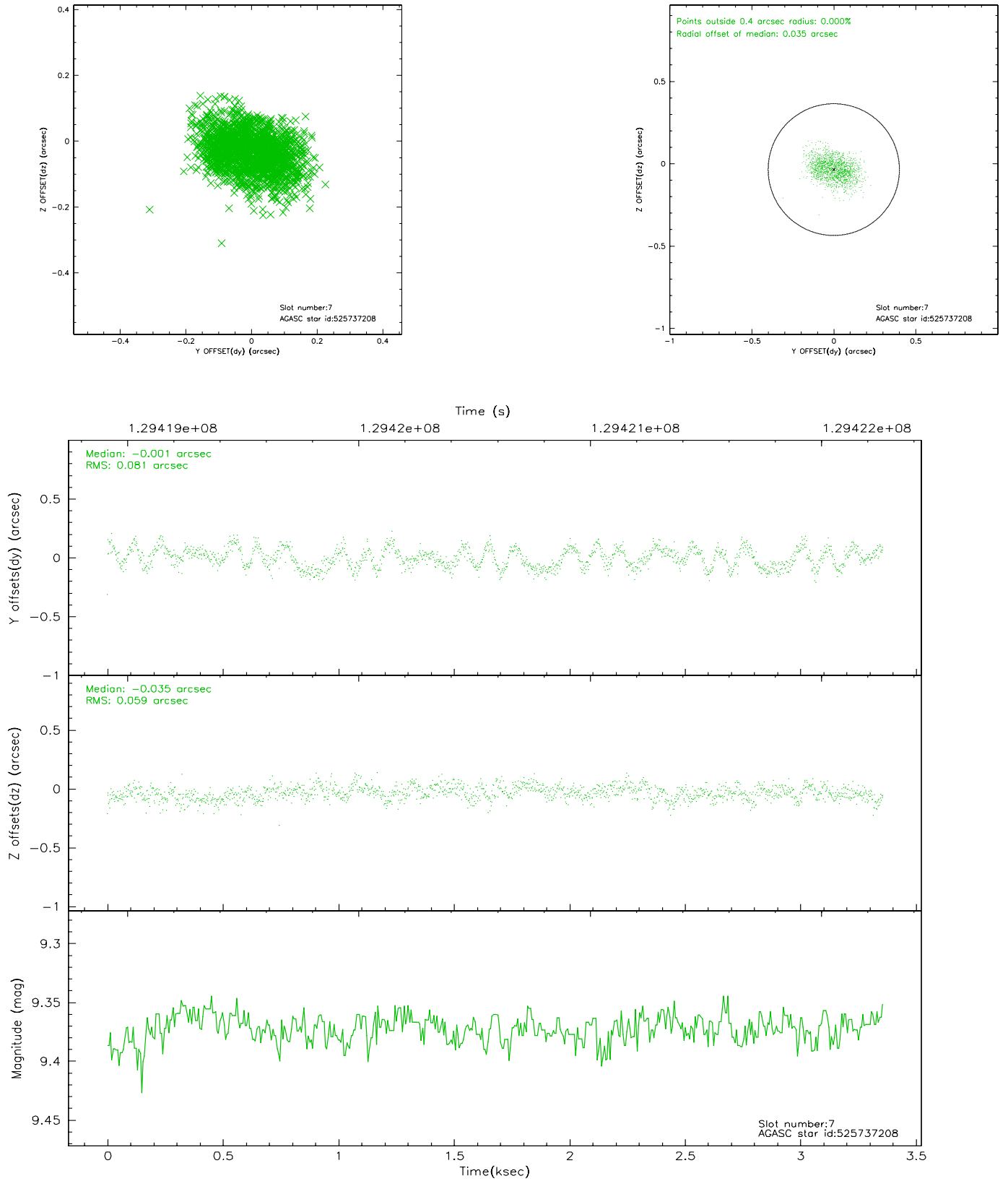
2.4.3 Slot 5



2.4.4 Slot 6

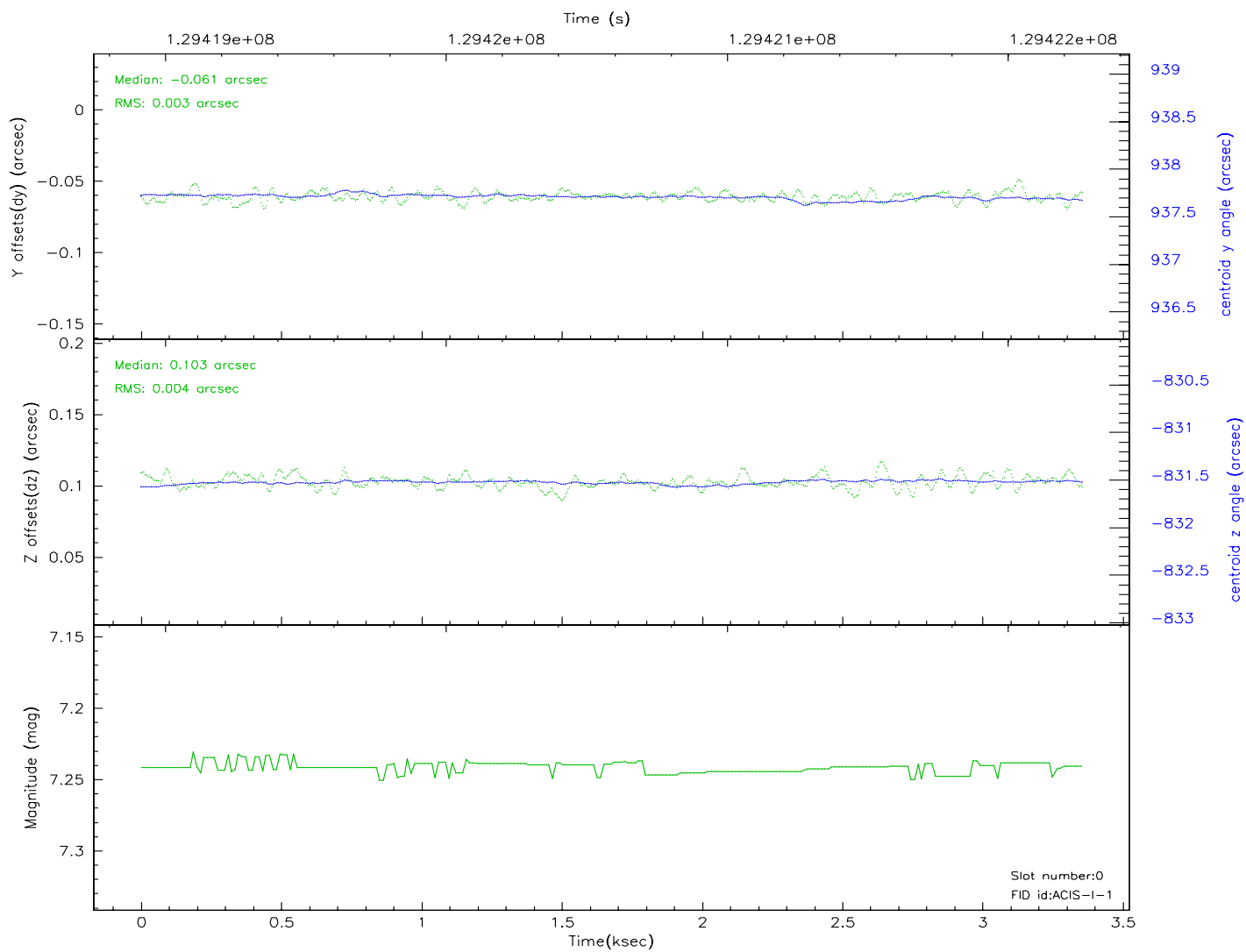
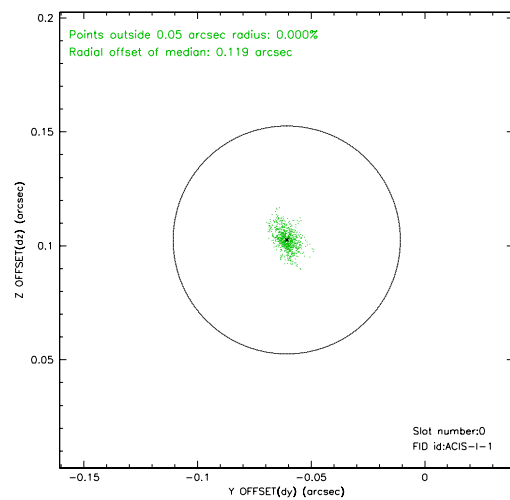
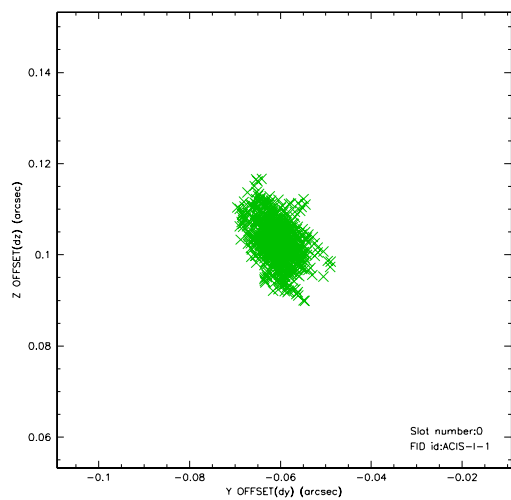


2.4.5 Slot 7

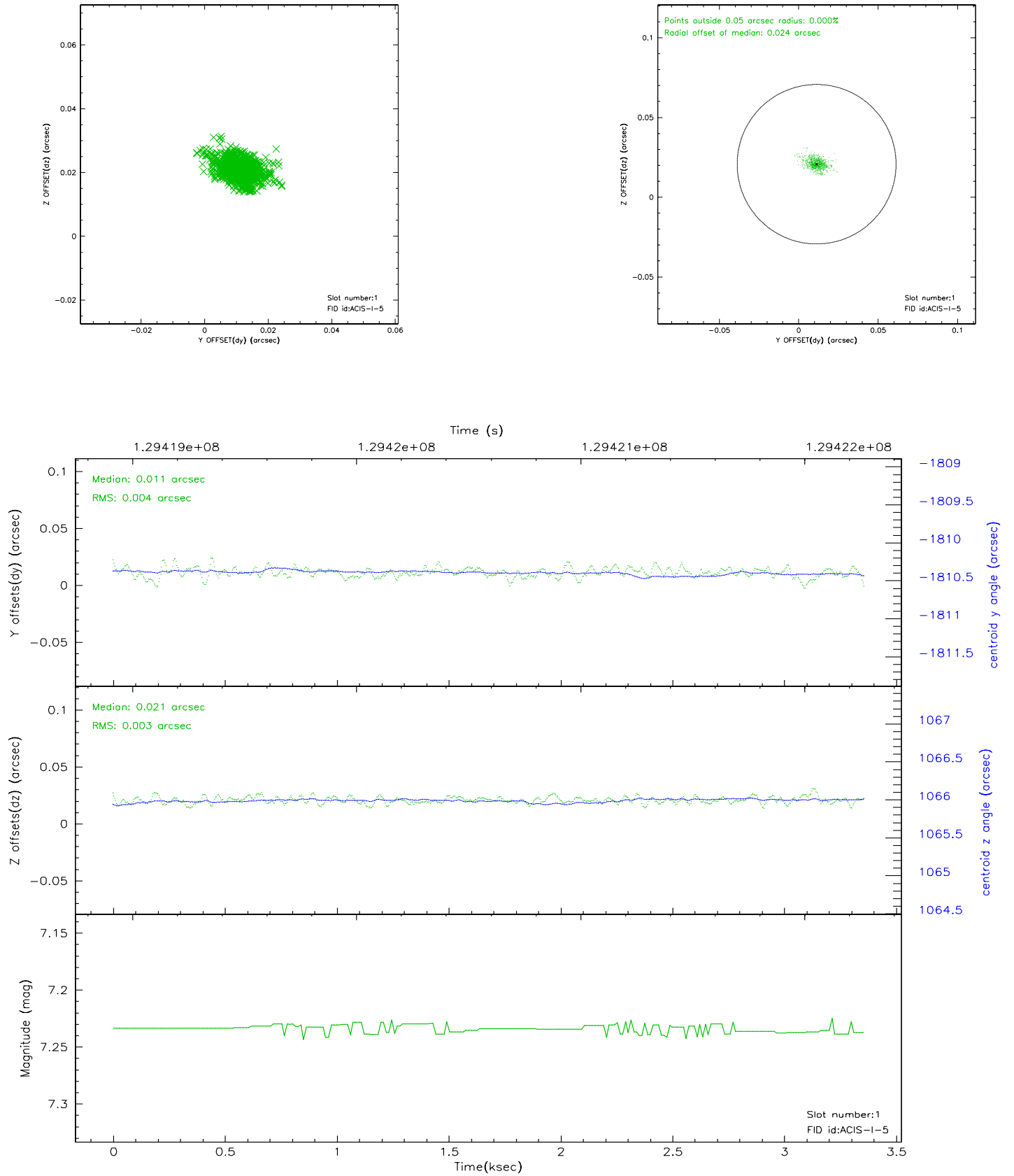


2.5 FID Slots

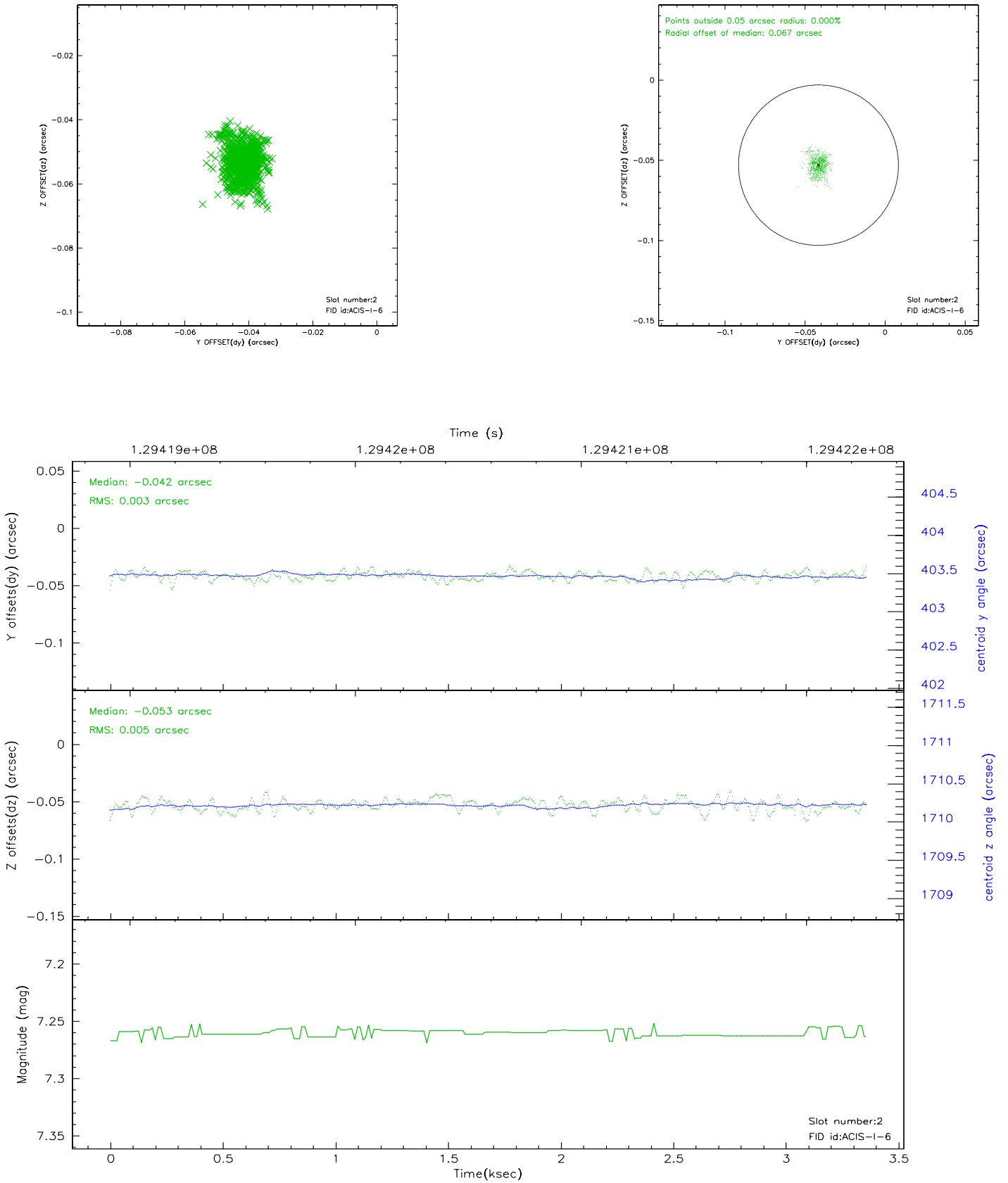
2.5.1 Slot 0



2.5.2 Slot 1



2.5.3 Slot 2



3 Point Sources

A Summary

A.1 Status

| | |
|----------------------------|-------------|
| V&V Scientist | Joy Nichols |
| V&V Date (YYYY-MM-DD) | 2006.09.01 |
| V&V Edition | 1 |
| V&V Disposition and Status | OK |
| V&V Charge Time | 1.958 |

A.2 Comments

Charge time for this ObsId remains at original value of 1.988 ks,
although
with the current processing the charge time would have been 1.44 ksec.
The original charge time did not take into account the dropped
exposures
due to telemetry saturation for chip 3.

Window constraint met.