

# V&V Reference Report

## L2 ASCDS Version : 8.4.5

Observation 2856 - L2 Version 3  
Chandra X-Ray Center

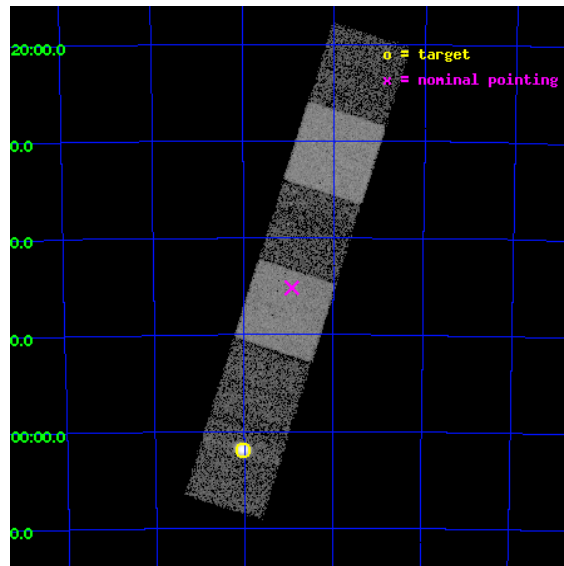
L2 Processing Date : Oct 9 2012

## Contents

<b>1</b>	<b>Front</b>	<b>2</b>
<b>2</b>	<b>OBI</b>	<b>3</b>
2.1	OBI . . . . .	3
2.1.1	Images . . . . .	3
2.1.2	Bias . . . . .	3
2.1.3	Parameters . . . . .	4
2.1.4	Events . . . . .	4
2.2	Compared Parameters . . . . .	5
2.3	Aspect . . . . .	6
2.4	Star Slots . . . . .	9
2.4.1	Slot 3 . . . . .	9
2.4.2	Slot 4 . . . . .	10
2.4.3	Slot 5 . . . . .	11
2.4.4	Slot 6 . . . . .	12
2.4.5	Slot 7 . . . . .	13
2.5	FID Slots . . . . .	14
2.5.1	Slot 0 . . . . .	14
2.5.2	Slot 1 . . . . .	15
2.5.3	Slot 2 . . . . .	16
<b>A</b>	<b>Summary</b>	<b>17</b>
A.1	Status . . . . .	17
A.2	Comments . . . . .	17

# 1 Front

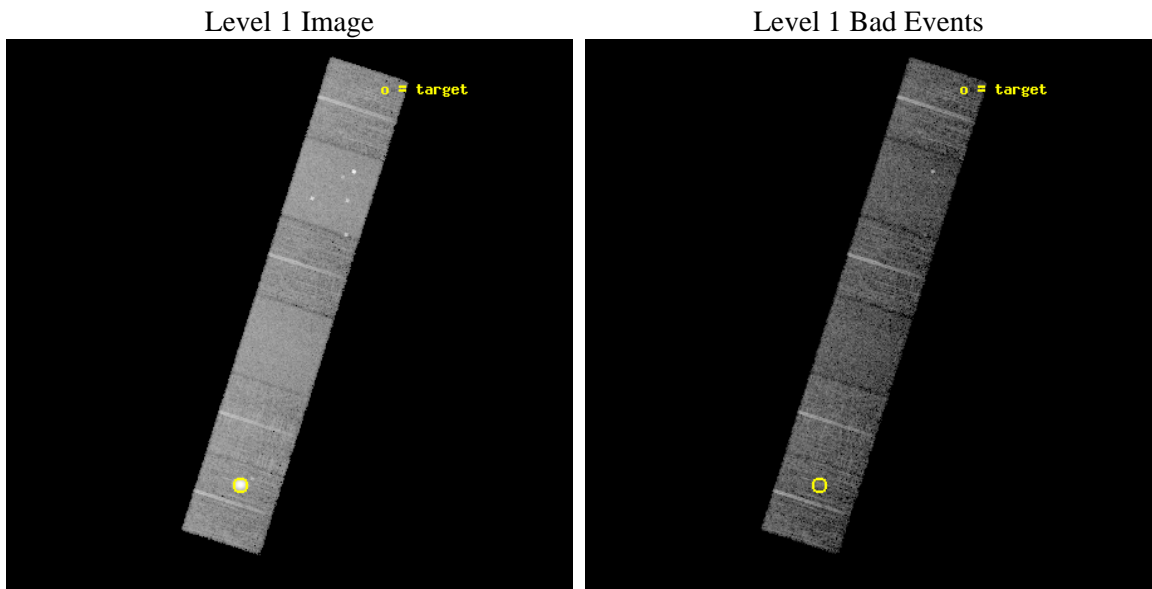
seq_num	590245	Sequence number
obs_id	2856	Observation id
title	AO3B ACIS-S CALIBRATION OBSERVATIONS OF E0102-72	Proposal title
observer	Dr. CXC Calibration	Principal investigator
object	E0102-72.3 [Chip S5, T=120, Offsets=-17,0,0]	Source name
dtcycle	0	&#160
cycle	P	events from which exps? Prim/Second/Both
ra_targ	16.01	Observer's specified target RA [deg]
dec_targ	-72.032028	Observer's specified target Dec [deg]
ra_nom	15.730613461068	Nominal RA [deg]
dec_nom	-71.753020865922	Nominal Dec [deg]
roll_nom	107.64353874201	Nominal Roll [deg]
revision	3	Processing version of data
ontime	7659.9888868332	Sum of GTIs [s]
livetime	7562.9934952565	Livetime [s]
ontime4	7660.1940868199	Sum of GTIs [s]
ontime5	7660.1120068133	Sum of GTIs [s]
ontime6	7660.07096681	Sum of GTIs [s]
ontime7	7660.1530468166	Sum of GTIs [s]
ontime8	7660.0298271179	Sum of GTIs [s]
ontime9	7659.9888868332	Sum of GTIs [s]
l2events	100450	Number of level 2 events



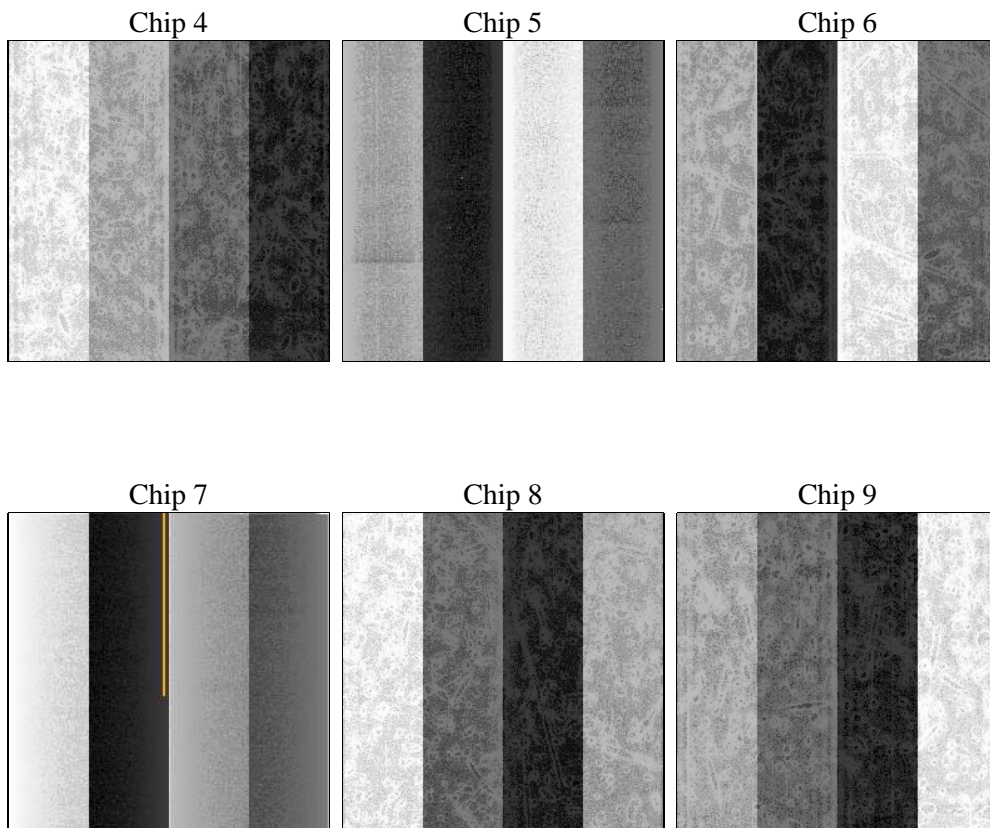
## 2 OBI

### 2.1 OBI

#### 2.1.1 Images



#### 2.1.2 Bias



### 2.1.3 Parameters

obi_num	0	Obi number	sched_exp_time	7900.000000	[s] Scheduled observation exposure time
ascdsver	8.4.5	Processing system revision	ontime	7659.9888868332	Sum of GTIs [s]
caldsver	4.5.2	&#160	ontime4	7660.1940868199	Sum of GTIs [s]
date	2012-10-10T00:57:27	Date and time of file creation	ontime5	7660.1120068133	Sum of GTIs [s]
revision	3	Processing version of data	ontime6	7660.07096681	Sum of GTIs [s]
			ontime7	7660.1530468166	Sum of GTIs [s]
			ontime8	7660.0298271179	Sum of GTIs [s]
			ontime9	7659.9888868332	Sum of GTIs [s]
			l1events	390685	Number of level 1 events

### 2.1.4 Events

	ccd 4	ccd 5	ccd 6	ccd 7	ccd 8	ccd 9		ccd 4	ccd 5	ccd 6	ccd 7	ccd 8	ccd 9
level 1 events	56424	76886	50752	65592	66642	74389	grade 0 events	2571	5500	2433	2758	4077	21835
rejected events	50212	39983	44768	38215	53430	46539		4%	7%	4%	4%	6%	29%
rejected %	88%	52%	88%	58%	80%	62%	grade 1 events	32	492	18	50	45	98
								0%	0%	0%	0%	0%	0%
							grade 2 events	1499	10679	1185	5450	2852	2794
								2%	13%	2%	8%	4%	3%
							grade 3 events	573	1728	599	2461	1442	940
								1%	2%	1%	3%	2%	1%
							grade 4 events	553	1468	561	2497	1392	911
								0%	1%	1%	3%	2%	1%
							grade 5 events	1875	5630	2226	6362	2844	2320
								3%	7%	4%	9%	4%	3%
							grade 6 events	1016	17528	1207	14211	3478	1401
								1%	22%	2%	21%	5%	1%
							grade 7 events	48305	33861	42523	31803	50512	44090
								85%	44%	83%	48%	75%	59%

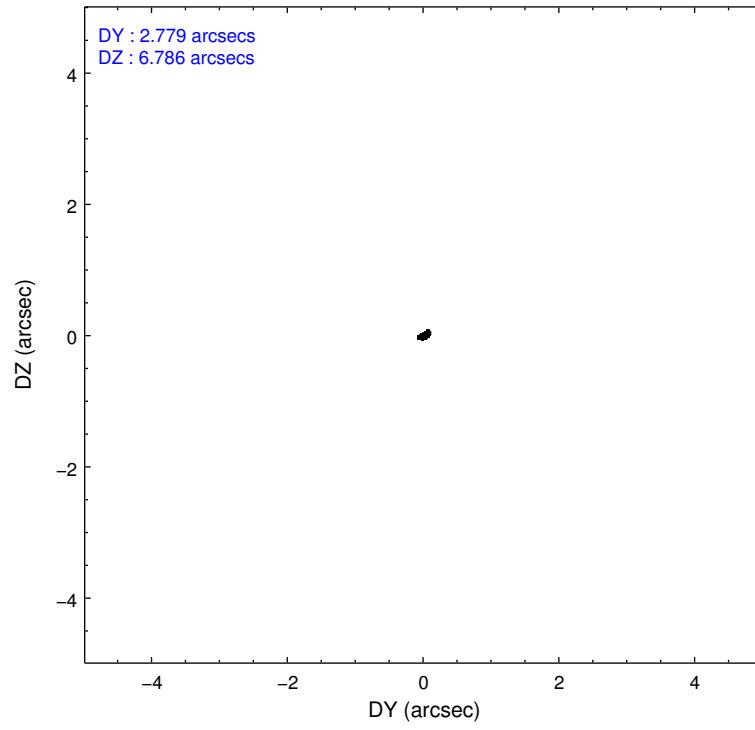
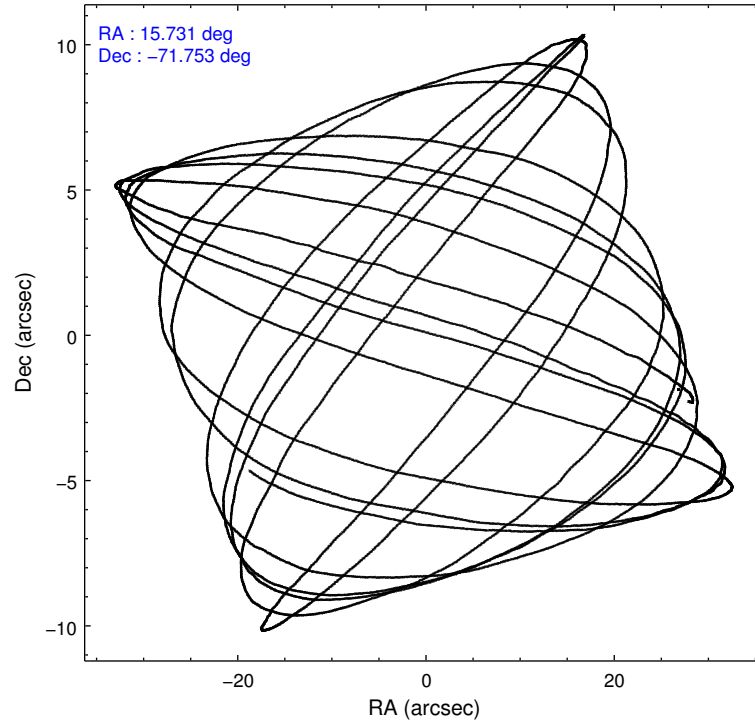


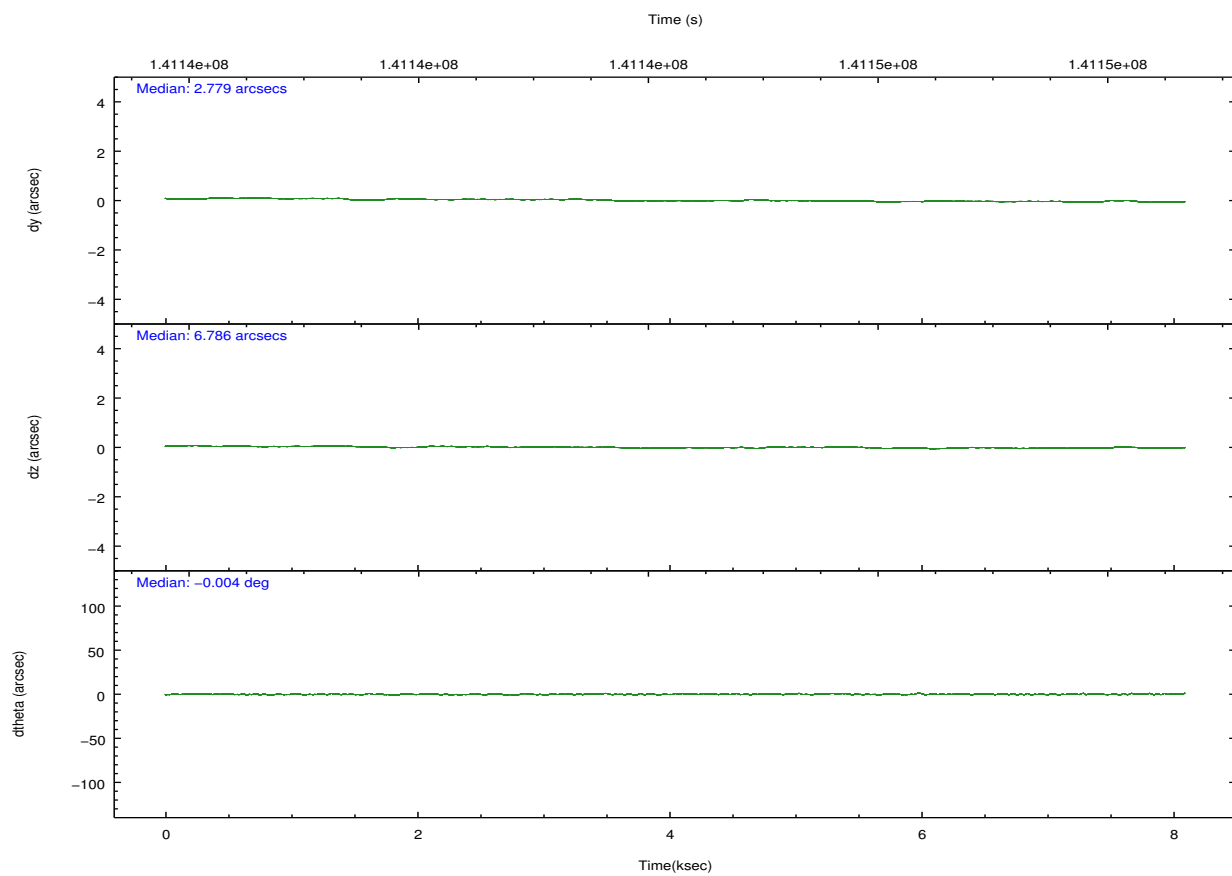
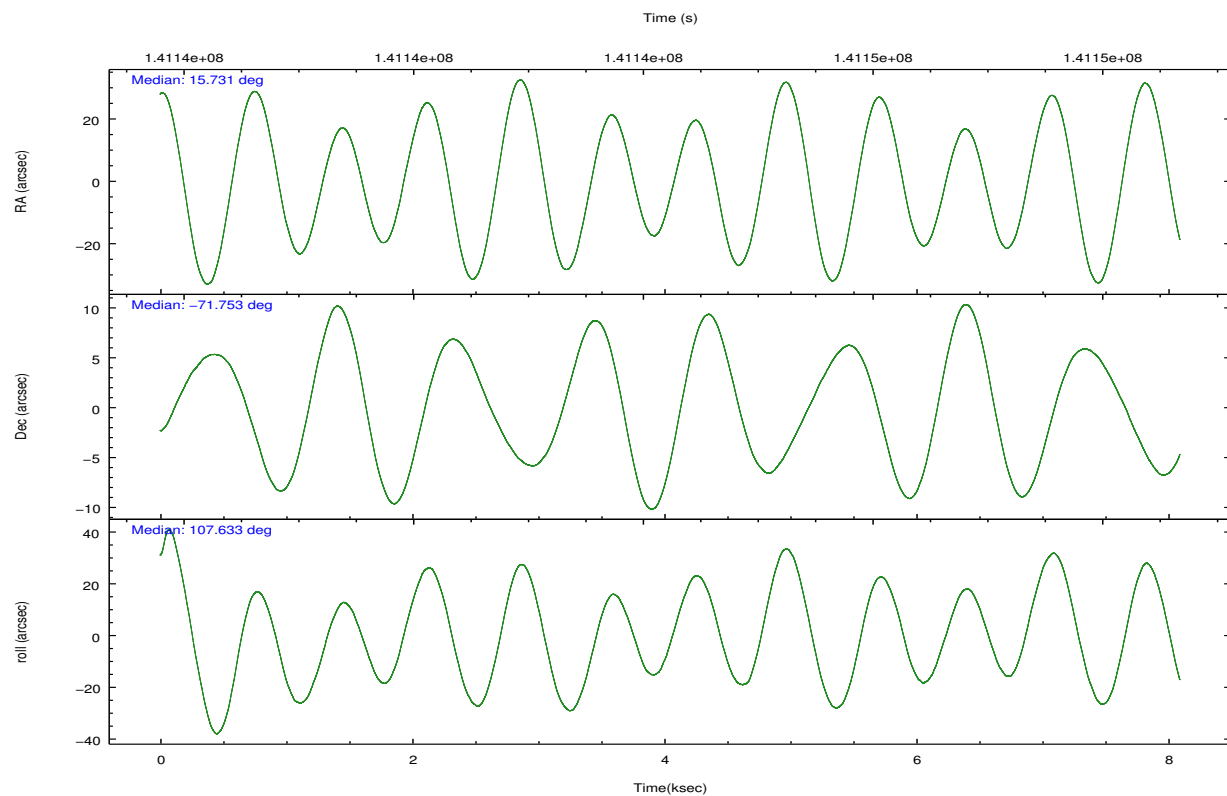
## 2.2 Compared Parameters

Parameter	Planned	Actual
Instrument	ACIS	ACIS
Detector	ACIS-456789	ACIS-456789
Grating	NONE	NONE
Data mode	FAINT	FAINT
Observation mode	POINTING	POINTING
[deg] Pointing RA	15.795674	15.73061346106751
[deg] Pointing Dec	-71.771114	-71.75302086592237
[deg] Pointing Roll	107.548700	107.6435387420121
[s] Window start time (MET)	139276864.184000	139276864.184000
[s] Window stop time (MET)	141782464.184000	141782464.184000
[mm] SIM focus pos	-0.684267	-0.6828225247311905
[mm] SIM defocus	0	0.001444936568705701
[mm] SIM translation stage pos	-190.132523	-190.1425803651734
[mm] SIM translation stage offset	0	0.01005778216563158
[s] Observation start time (MET)	141140378.184000	141139914.42909
Observation start date	2002-06-22T13:38:34	2002-06-22T13:31:54
[s] Observation end time (MET)	141148278.184000	141149072.80447
Observation end date	2002-06-22T15:50:14	2002-06-22T16:04:32
Read mode	TIMED	TIMED

Parameter	Planned	Actual
Obspar format version number	7	7
Obspar file type	PREDICTED	ACTUAL
Obspar update status	NONE	UPDATED
Number of optional ACIS chips dropped	0	0
On-chip summing requested	N	N
Subarray requested	NONE	NONE
Alternating exposures requested	N	N
[s] Primary exposure time	0.000000	3.2

## 2.3 Aspect



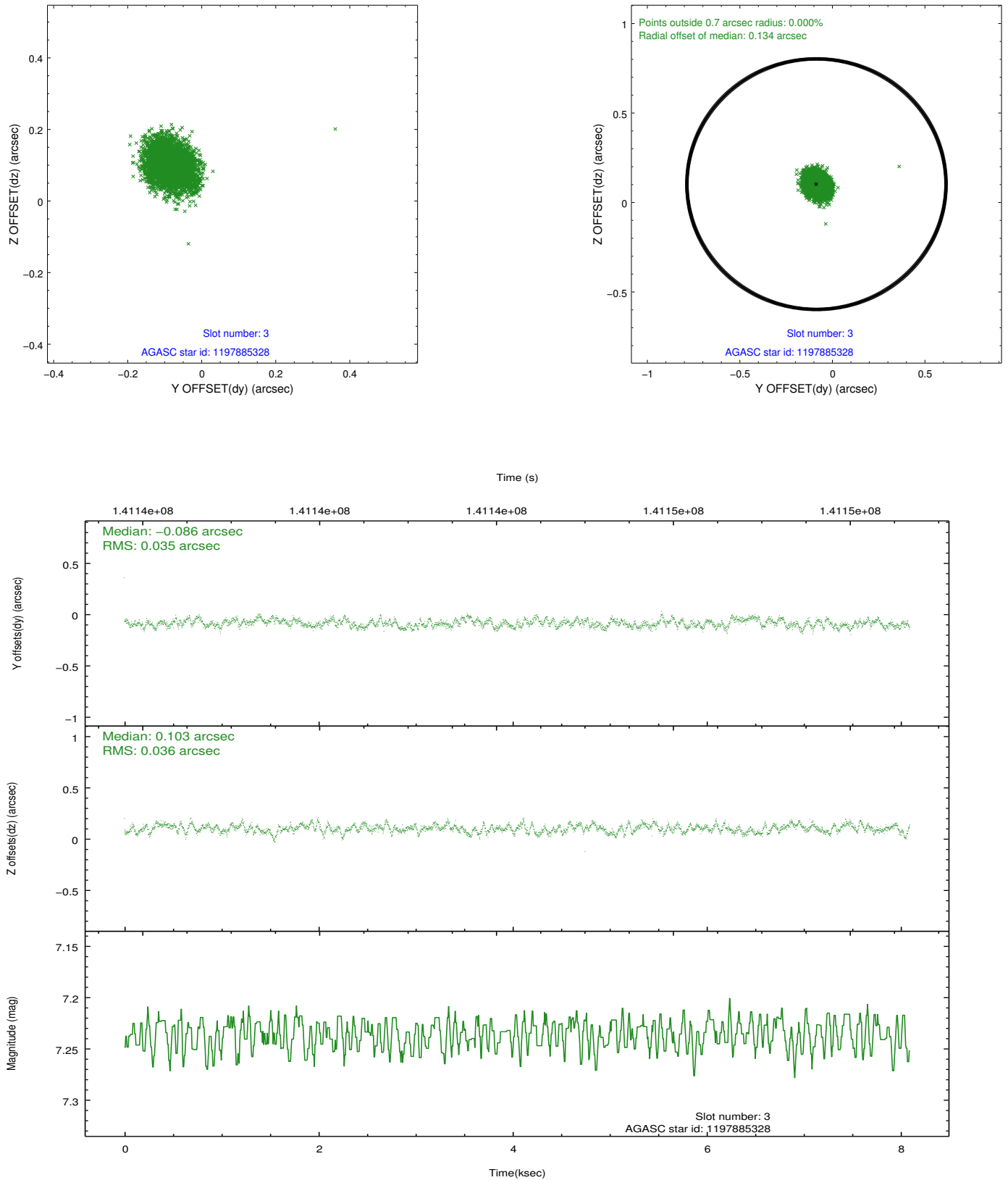


### Slot Statistics

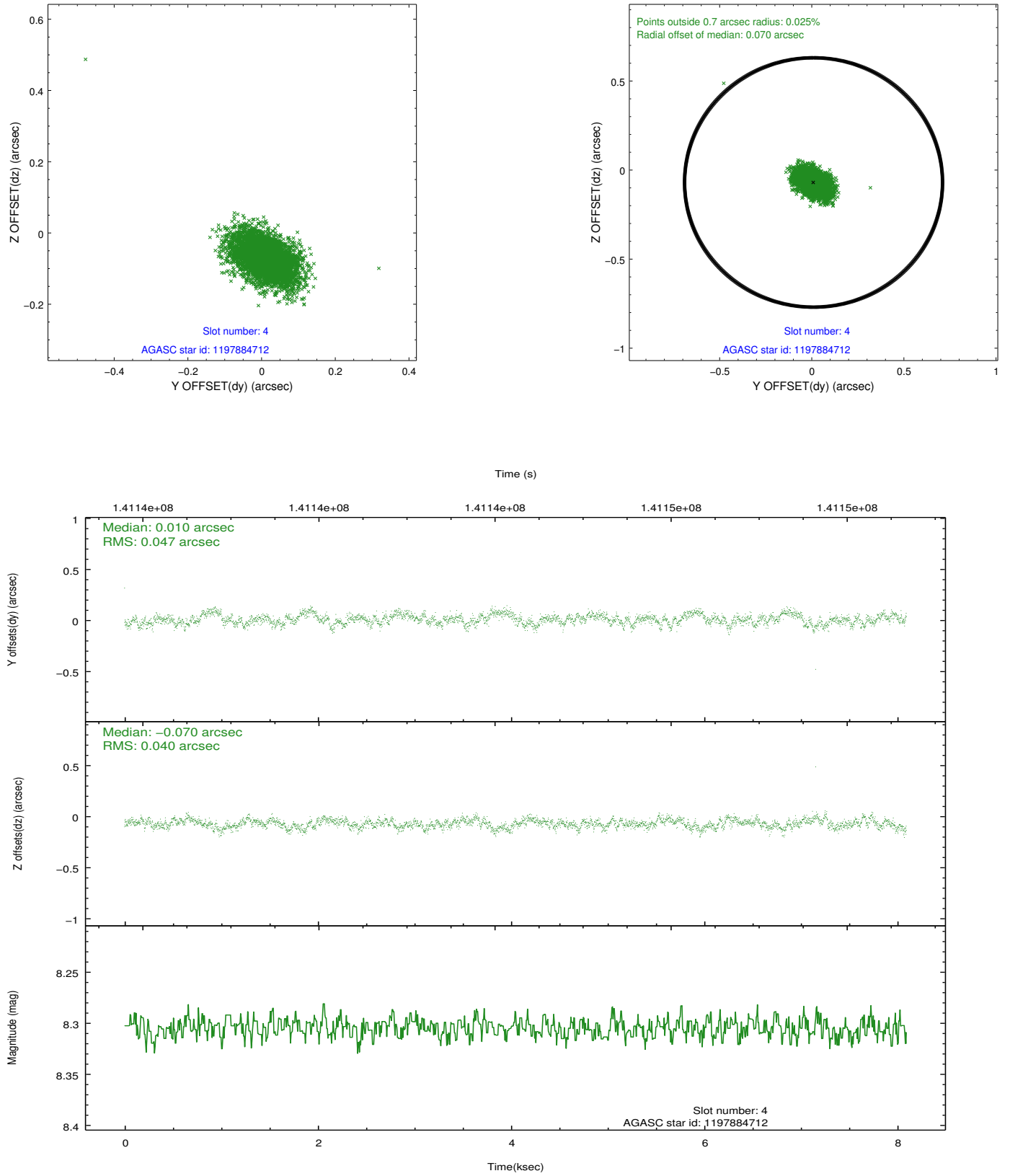
slot	status	id	mag	n_pts	med_dy	med_dz	dr1	dr2	ra	dec	mean_y	mean_z
0	FID	ACIS-S-2	7.11	1974	-0.009	-0.005	0.006	0.010	0.000000	0.000000	-755.42	-1727.91
1	FID	ACIS-S-4	7.20	1974	-0.007	0.001	0.006	0.010	0.000000	0.000000	2157.53	179.89
2	FID	ACIS-S-6	7.35	1974	-0.012	0.010	0.007	0.011	0.000000	0.000000	407.43	818.07
3	GUIDE	1197885328	7.24	3949	-0.086	0.103	0.054	0.085	16.283090	-71.733943	-40.19	-564.31
4	GUIDE	1197884712	8.30	3949	0.010	-0.070	0.064	0.107	16.087398	-72.252690	-1750.20	217.11
5	GUIDE	1197750640	9.73	3943	0.059	-0.072	0.103	0.168	15.758835	-72.088048	-1075.89	382.65
6	GUIDE	1197878768	9.62	3946	-0.113	0.059	0.094	0.154	16.656786	-71.304581	1295.12	-1451.44
7	GUIDE	1197749664	9.57	3944	0.123	-0.021	0.104	0.173	15.809015	-72.366369	-2047.13	631.38

## 2.4 Star Slots

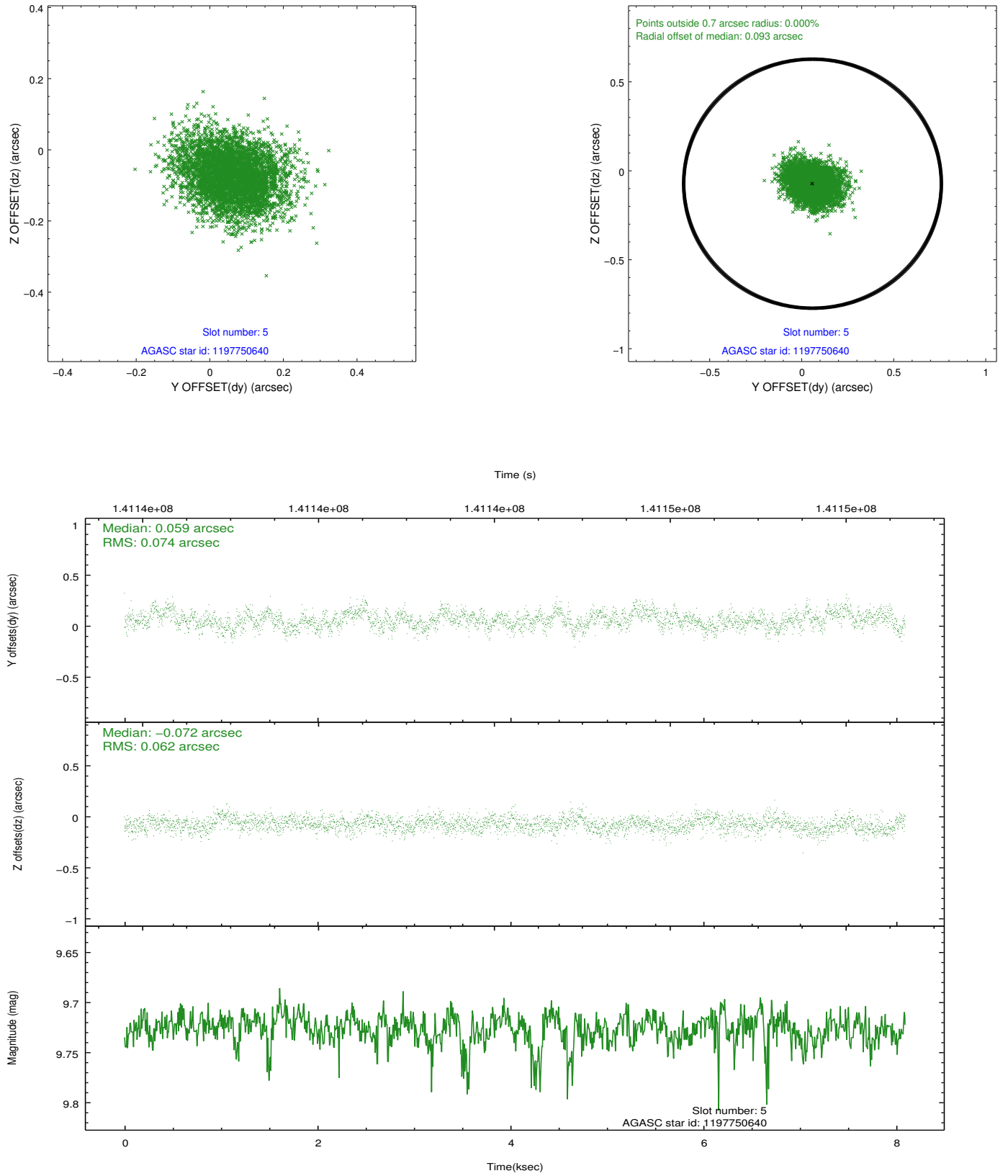
### 2.4.1 Slot 3



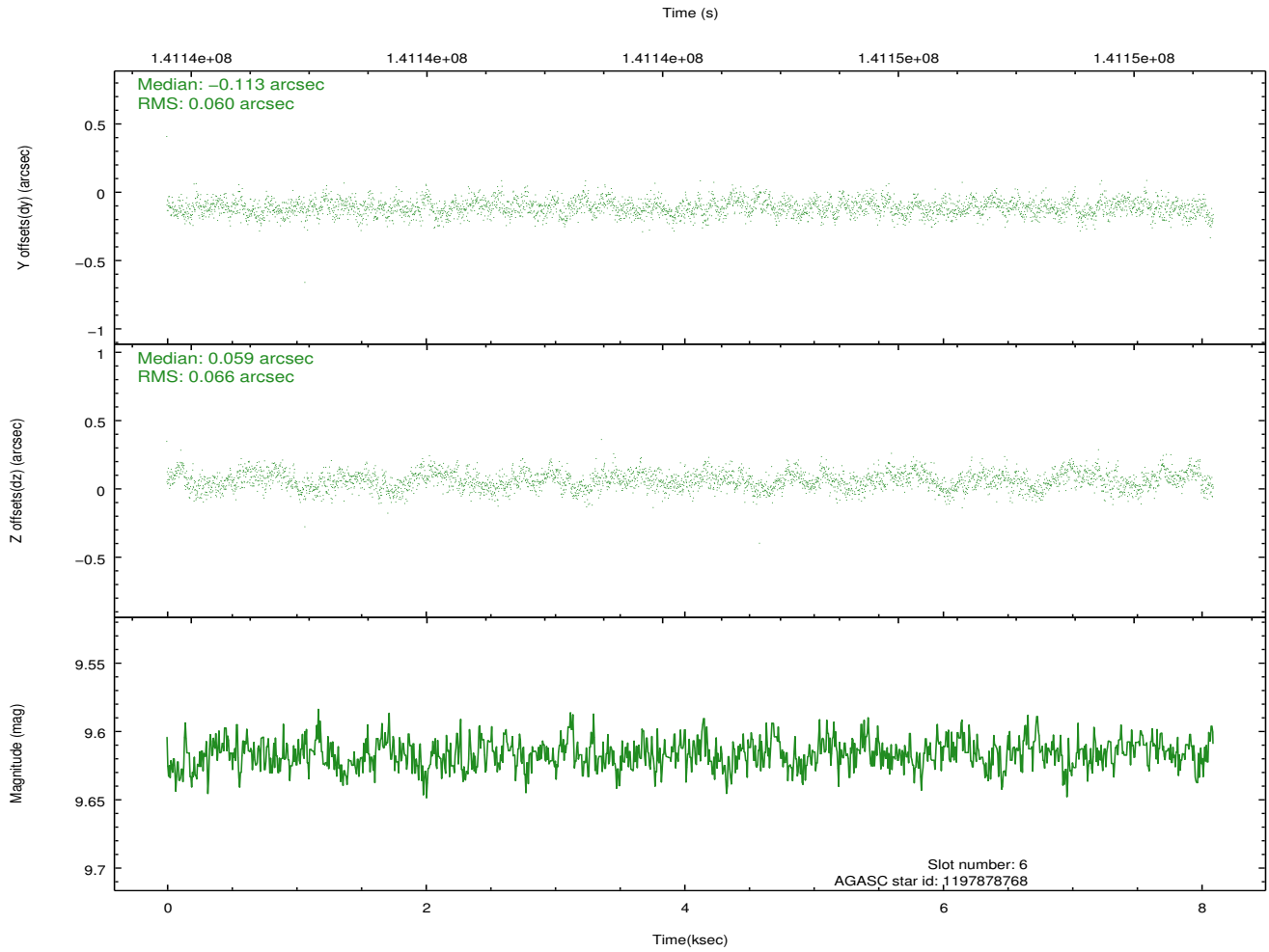
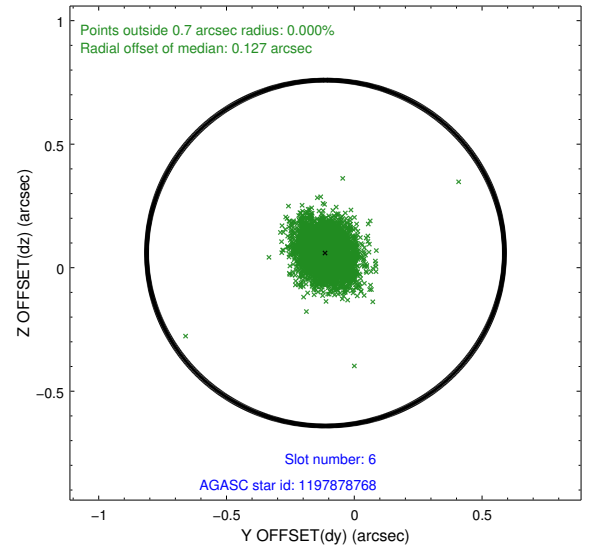
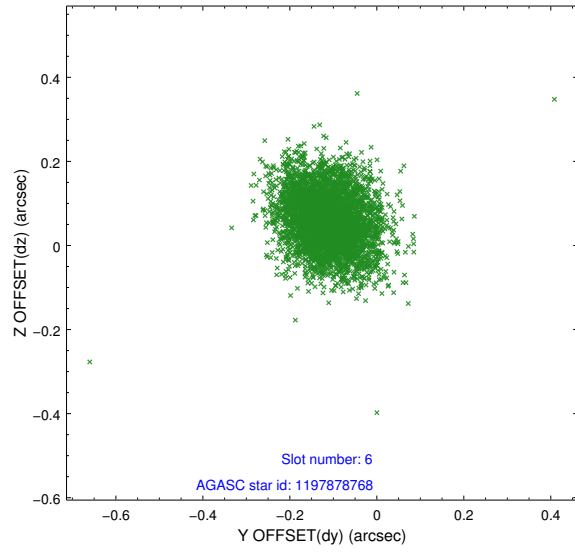
## 2.4.2 Slot 4



### 2.4.3 Slot 5

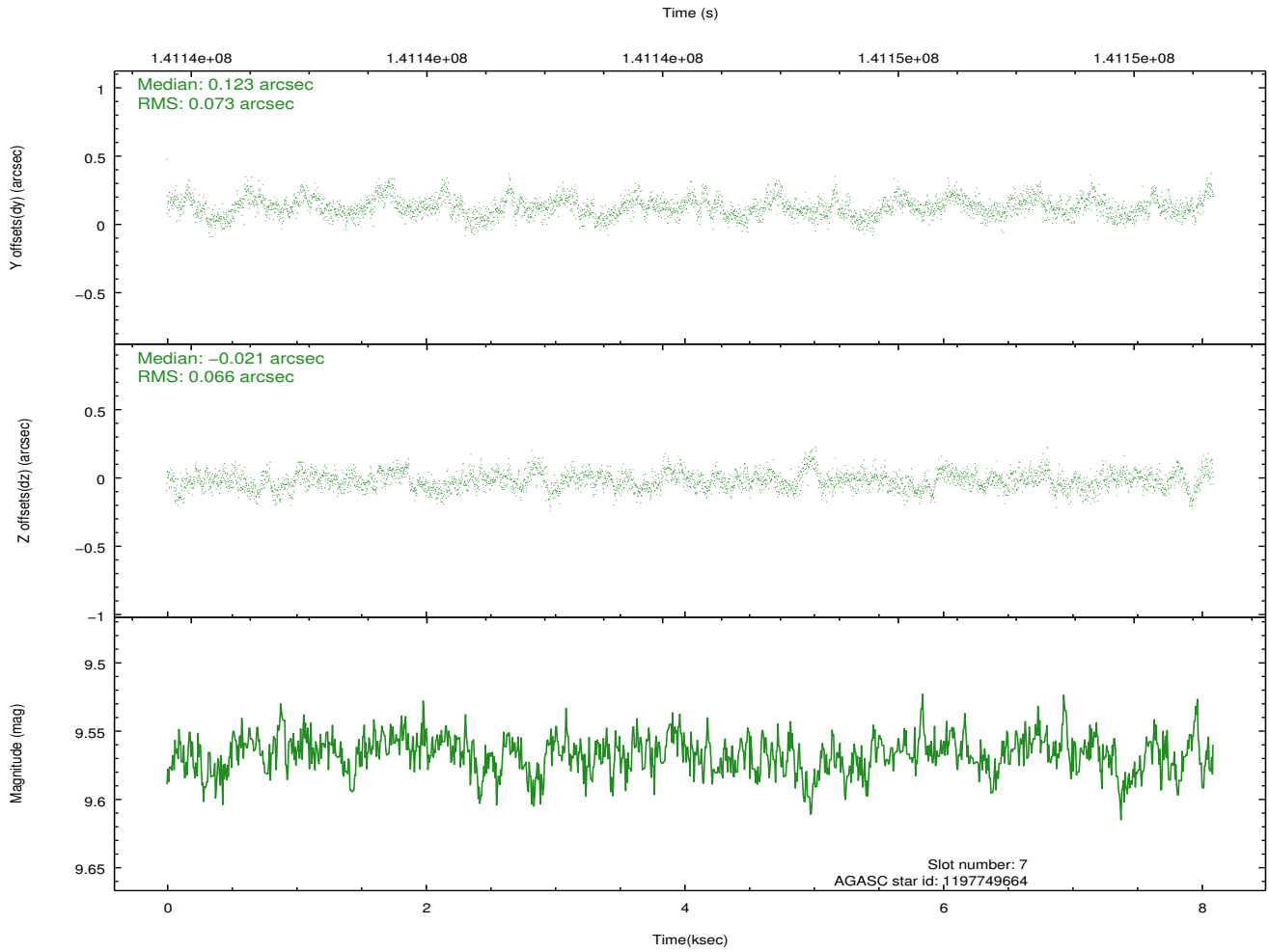
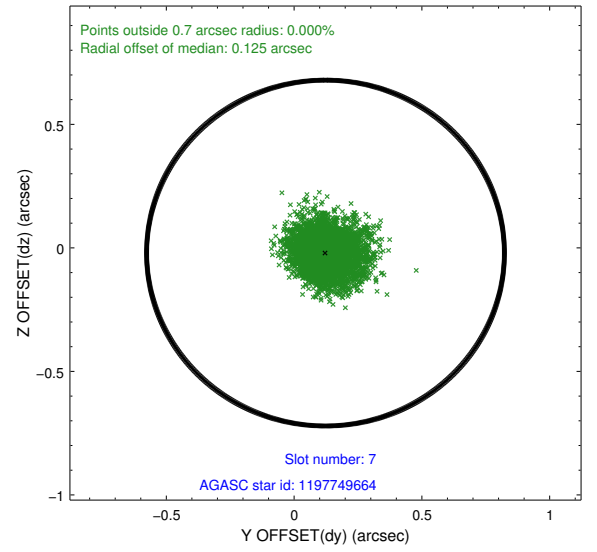
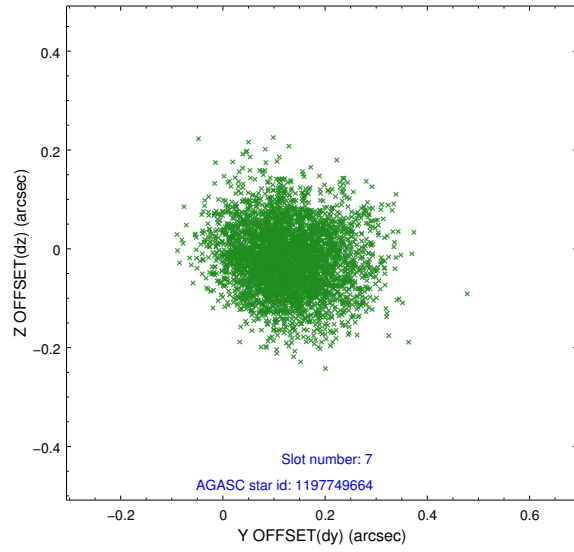


## 2.4.4 Slot 6



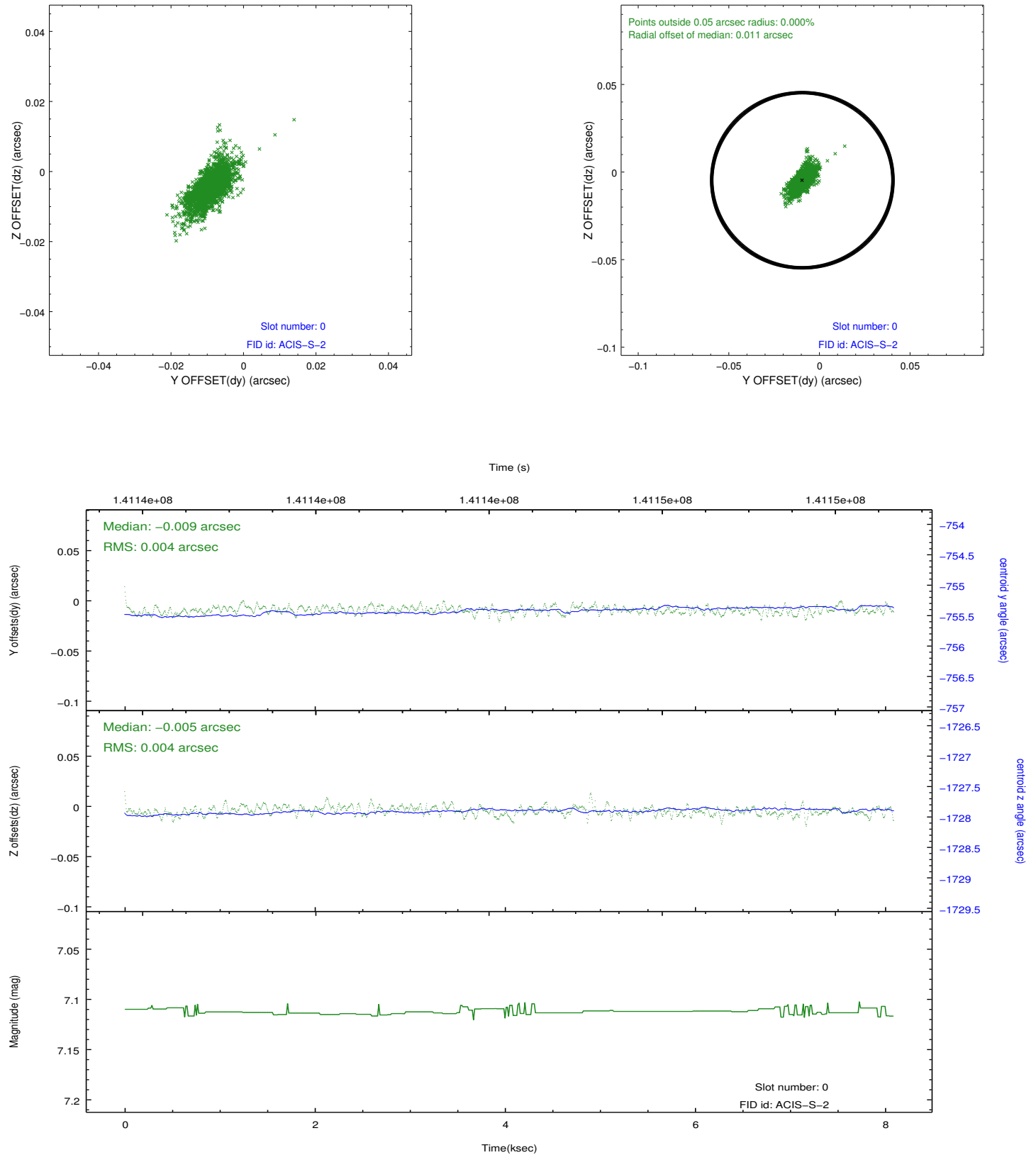


## 2.4.5 Slot 7

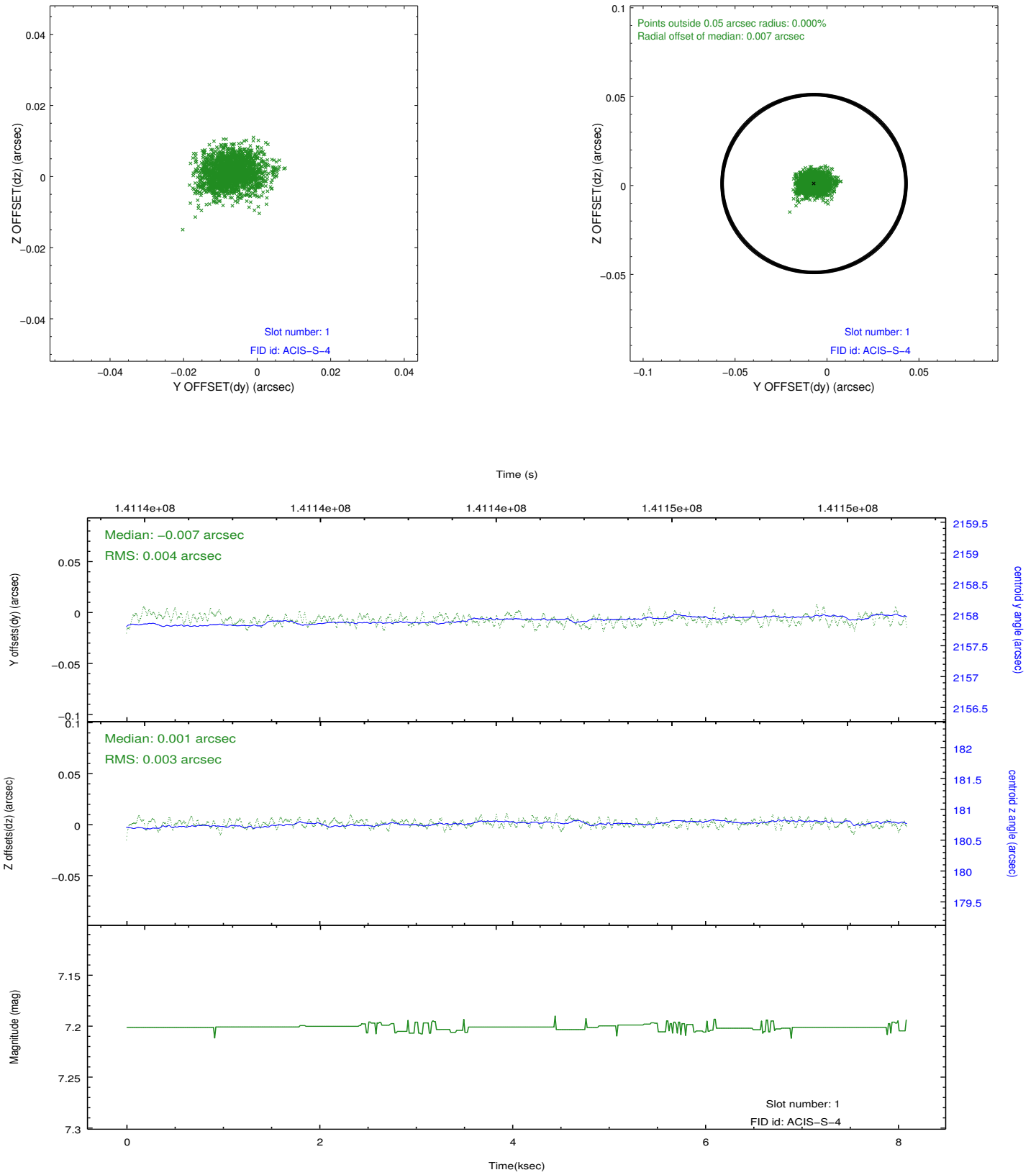


## 2.5 FID Slots

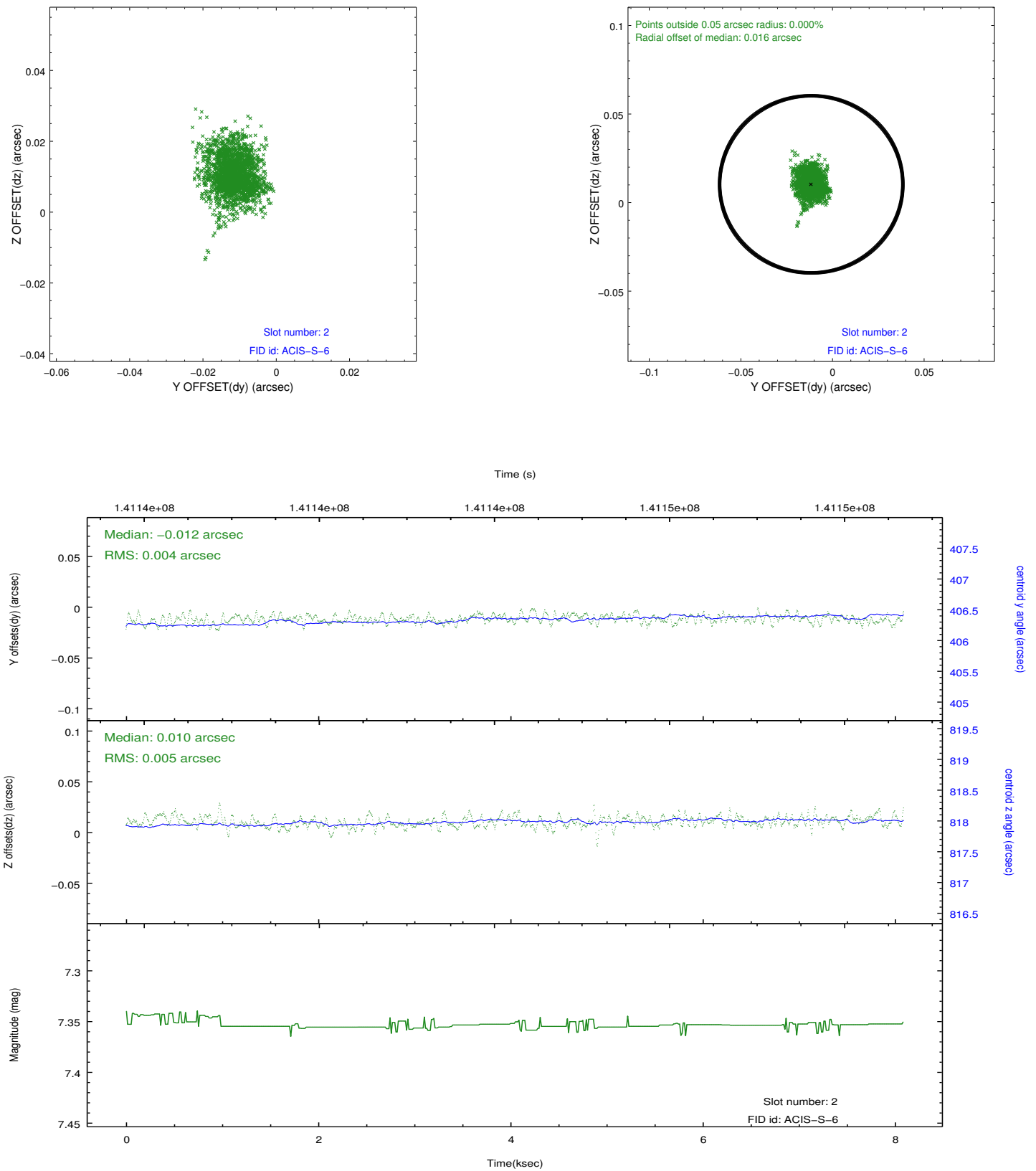
### 2.5.1 Slot 0



## 2.5.2 Slot 1



### 2.5.3 Slot 2



## A Summary

### A.1 Status

V&V Scientist	Jen Lauer
V&V Date (YYYY-MM-DD)	2012.10.19
V&V Edition	1
V&V Disposition and Status	OK
V&V Charge Time	7.66

### A.2 Comments

Window constraint satisfied.