

V&V Reference Report

L2 ASCDS Version : 7.6.9

Observation 2856 - L2 Version 001
Chandra X-Ray Center

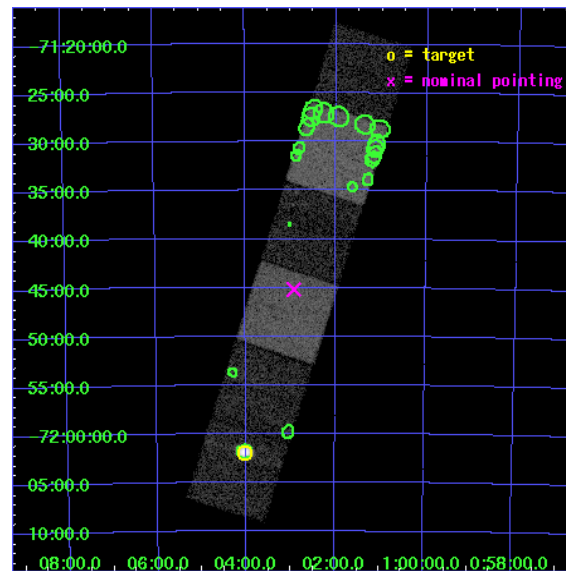
L2 Processing Date : Sep 20 2006

Contents

1	Front	2
2	OBI	3
2.1	OBI	3
2.1.1	Images	3
2.1.2	Bias	3
2.1.3	Parameters	4
2.1.4	Events	4
2.2	Compared Parameters	5
2.3	Aspect	6
2.4	Star Slots	9
2.4.1	Slot 3	9
2.4.2	Slot 4	10
2.4.3	Slot 5	11
2.4.4	Slot 6	12
2.4.5	Slot 7	13
2.5	FID Slots	14
2.5.1	Slot 0	14
2.5.2	Slot 1	15
2.5.3	Slot 2	16
3	Point Sources	17
A	Summary	18
A.1	Status	18
A.2	Comments	18

1 Front

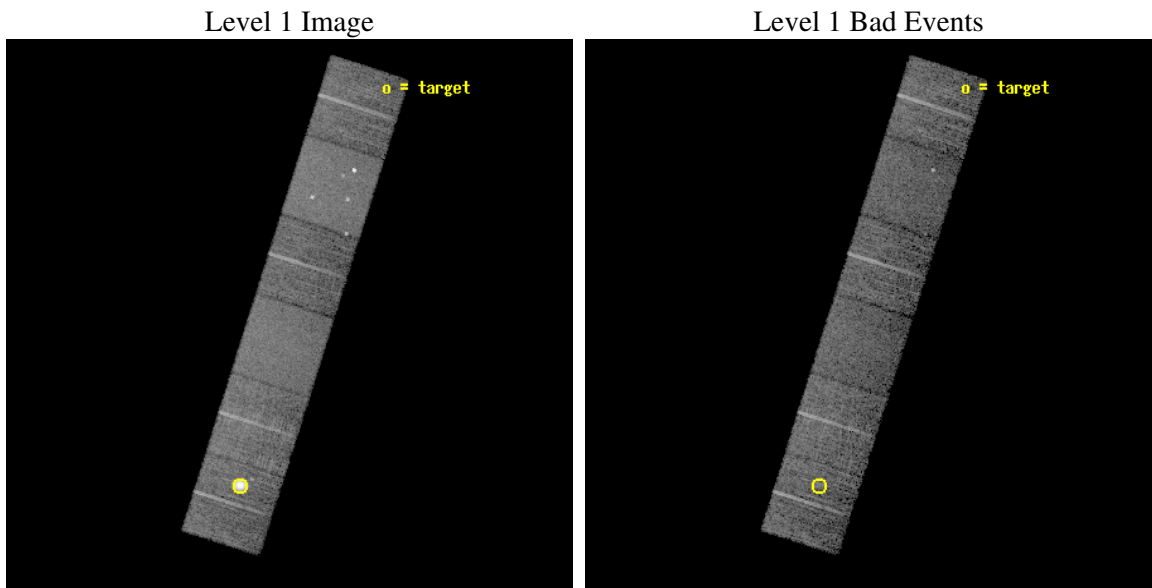
seq_num	590245
obs_id	2856
title	AO3B ACIS-S CALIBRATION OBSERVATIONS OF E0102-72
observer	Dr. CXC Calibration
object	E0102-72.3 [Chip S5, T=120, Offsets=-17,0,0]
dtcycle	0
cycle	P
ra_targ	16.01
dec_targ	-72.032028
ra_nom	15.730613461067
dec_nom	-71.753020865922
roll_nom	107.64353874201
revision	2
ontime	7660.7999714613
livetime	7563.7943094427
ontime4	7660.7307384312
ontime5	7660.7999714613
ontime6	7660.7999714613
ontime7	7660.7718083262
ontime8	7660.7999714613
ontime9	7660.7999714613
l2events	97352



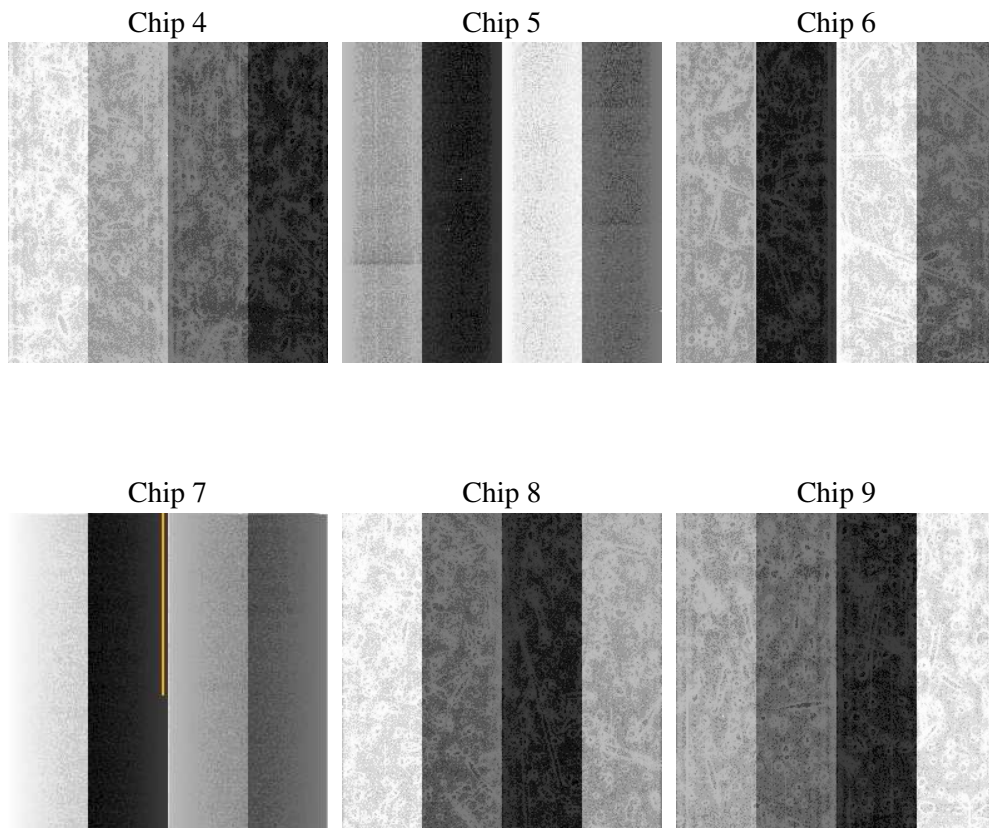
2 OBI

2.1 OBI

2.1.1 Images



2.1.2 Bias



2.1.3 Parameters

obi_num	0
ascdsver	7.6.9
caldbver	3.2.3
date	2006-09-21T00:06:41
revision	2

sched_exp_time	7900.000000
ontime	7664.9658738673
ontime4	7661.7248537838
ontime5	7661.7248836756
ontime6	7661.7248836756
ontime7	7661.7248836756
ontime8	7664.9657741785
ontime9	7664.9658738673
l1events	390685

2.1.4 Events

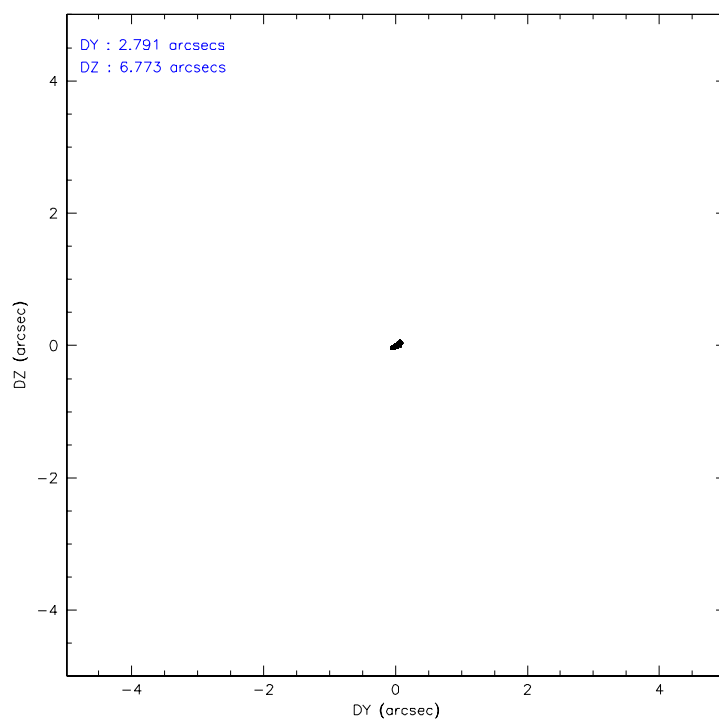
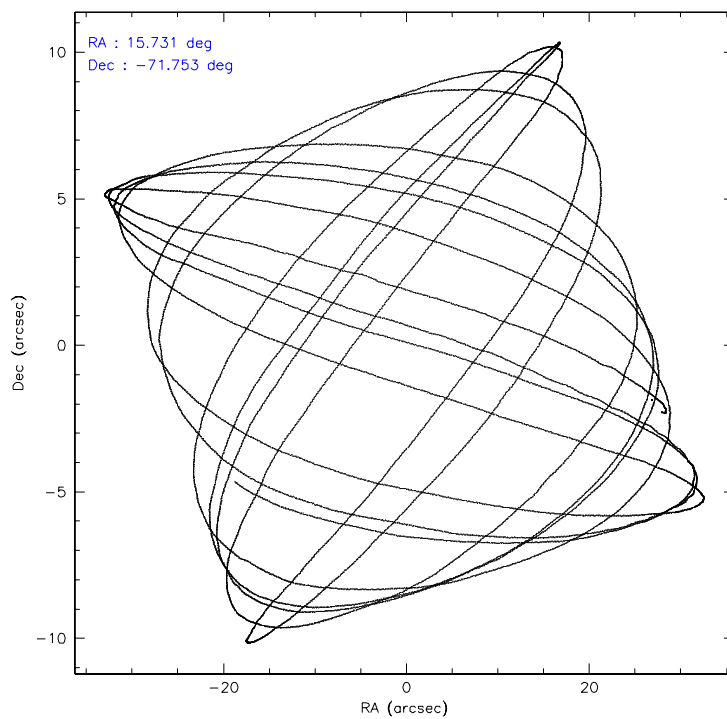
	ccd 4	ccd 5	ccd 6	ccd 7	ccd 8	ccd 9
level 1 events	56424	76886	50752	65592	66642	74389
rejected events	50212	41116	44767	40327	53420	46520
rejected %	88%	53%	88%	61%	80%	62%

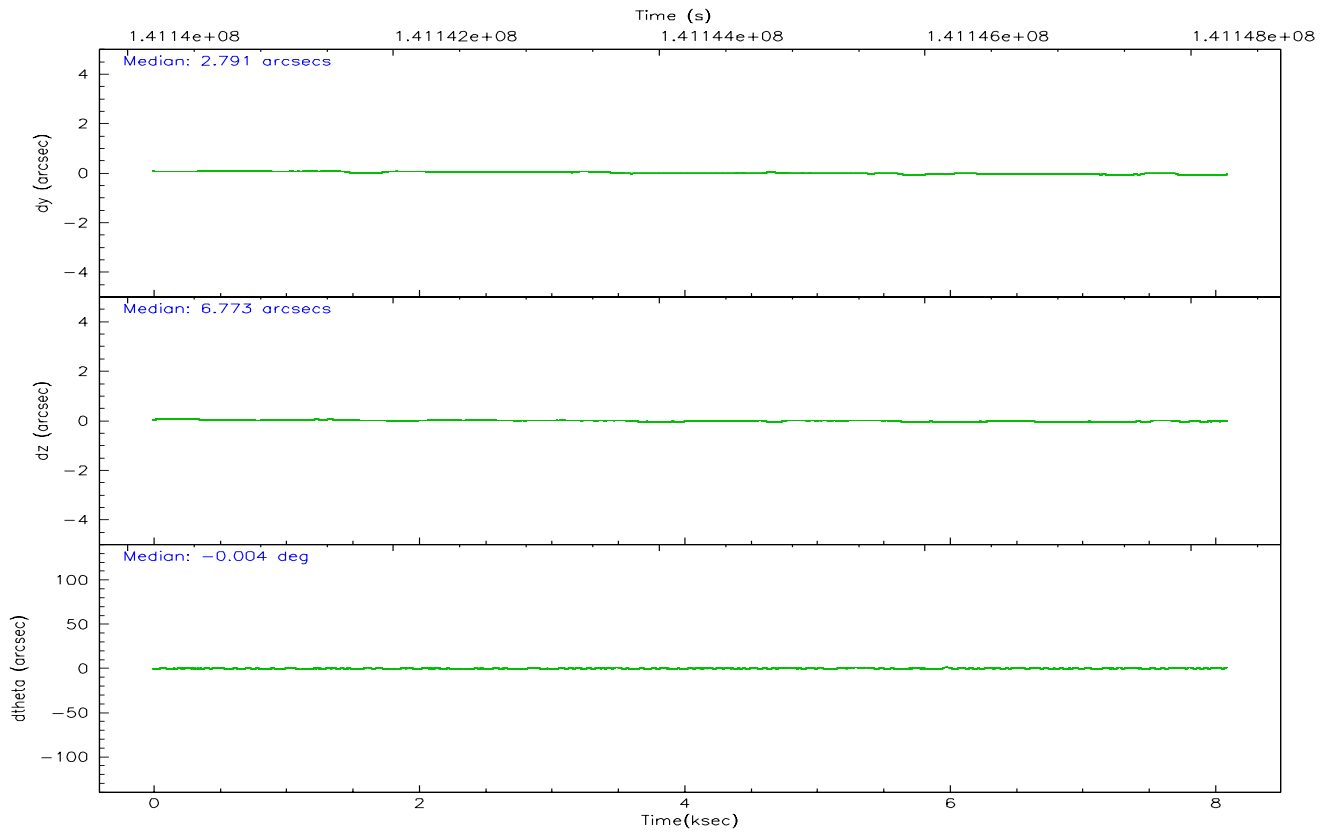
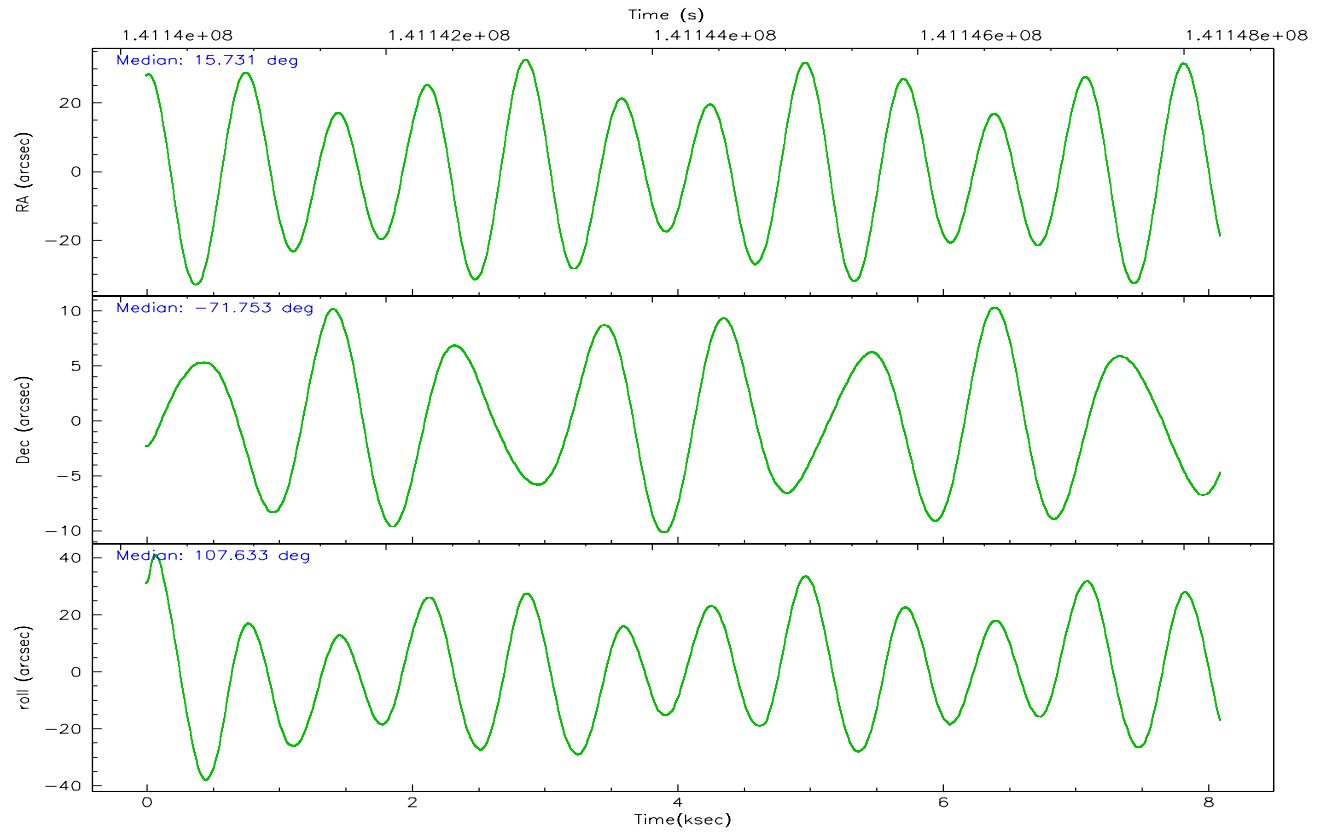
	ccd 4	ccd 5	ccd 6	ccd 7	ccd 8	ccd 9
grade 0 events	2571	4583	2432	1668	4077	21835
	4%	5%	4%	2%	6%	29%
grade 1 events	32	438	18	28	45	98
	0%	0%	0%	0%	0%	0%
grade 2 events	1499	10878	1186	6332	2852	2794
	2%	14%	2%	9%	4%	3%
grade 3 events	573	973	599	1347	1442	940
	1%	1%	1%	2%	2%	1%
grade 4 events	553	826	561	1336	1392	911
	0%	1%	1%	2%	2%	1%
grade 5 events	1875	3622	2226	4454	2844	2320
	3%	4%	4%	6%	4%	3%
grade 6 events	1016	18510	1207	14582	3478	1401
	1%	24%	2%	22%	5%	1%
grade 7 events	48305	37056	42523	35845	50512	44090
	85%	48%	83%	54%	75%	59%

2.2 Compared Parameters

Parameter	Planned	Actual	Parameter	Planned	Actual
Instrument	ACIS	ACIS	Obspar format version number	6	6
Detector	ACIS-456789	ACIS-456789	Obspar file type	PREDICTED	ACTUAL
Grating	NONE	NONE	Obspar update status	NONE	UPDATED
Data mode	FAINT	FAINT	Number of optional ACIS chips dropped	0	0
Observation mode	POINTING	POINTING	On-chip summing requested	N	N
Pointing RA	15.795674	15.73061346106749	Subarray requested	NONE	NONE
Pointing Dec	-71.771114	-71.75302086592234	Alternating exposures requested	N	N
Pointing Roll	107.548700	107.6435387420121	Primary exposure time	0.000000	3.2
Window start time	139276864.184000	139276864.184000			
Window stop time	141782464.184000	141782464.184000			
SIM focus pos (mm)	-0.684267	-0.6828225247311905			
SIM defocus (mm)	0	0.001444936568705701			
SIM translation stage pos (mm)	-190.132523	-190.1425803651734			
SIM translation stage offset (mm)	0	0.01005778216563158			
Observation start time	141140378.184000	141139914.42909			
Observation start date	2002-06-22T13:38:34	2002-06-22T13:31:54			
Observation end time	141148278.184000	141149072.80447			
Observation end date	2002-06-22T15:50:14	2002-06-22T16:04:32			
Read mode	TIMED	TIMED			

2.3 Aspect



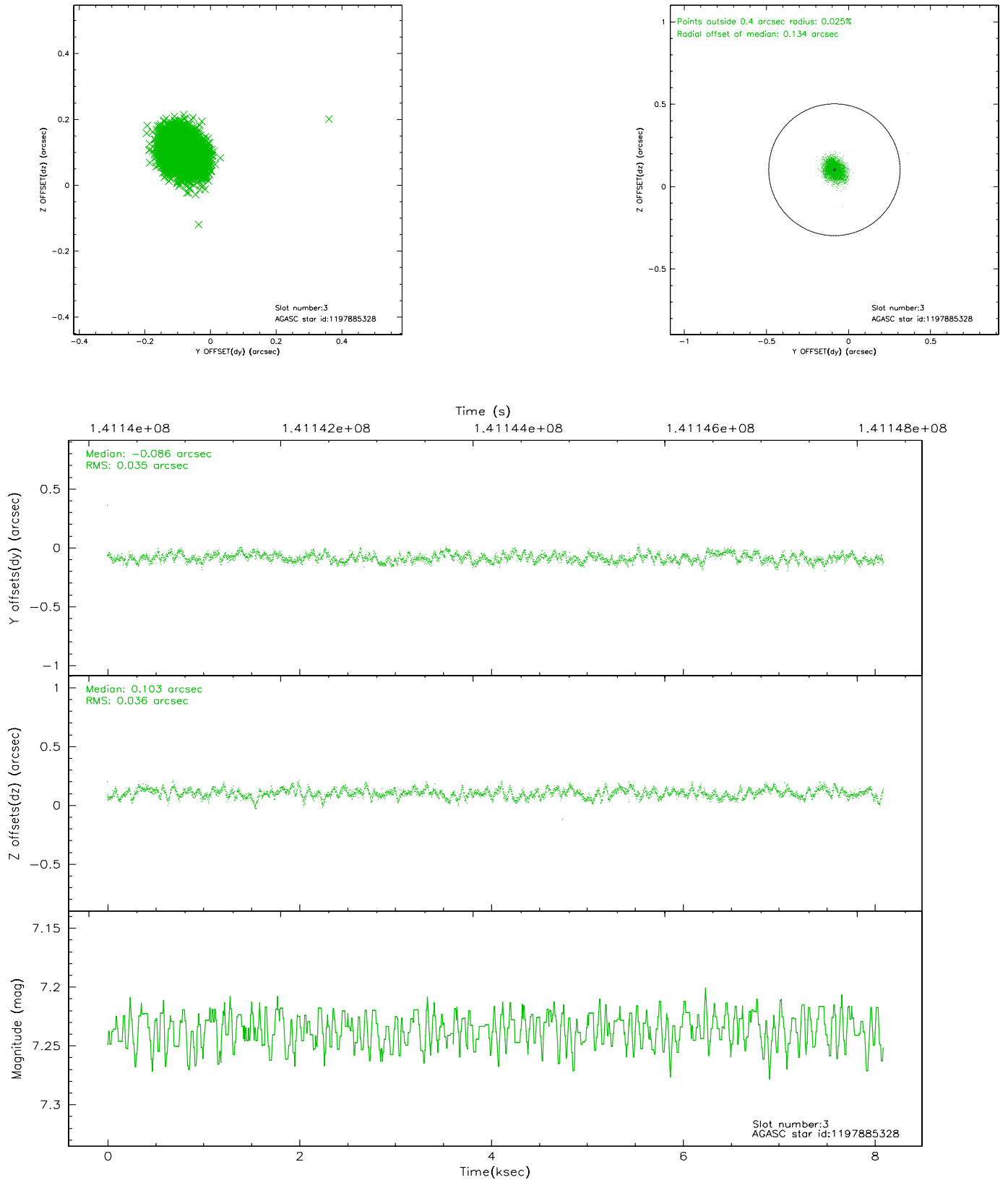


Slot Statistics

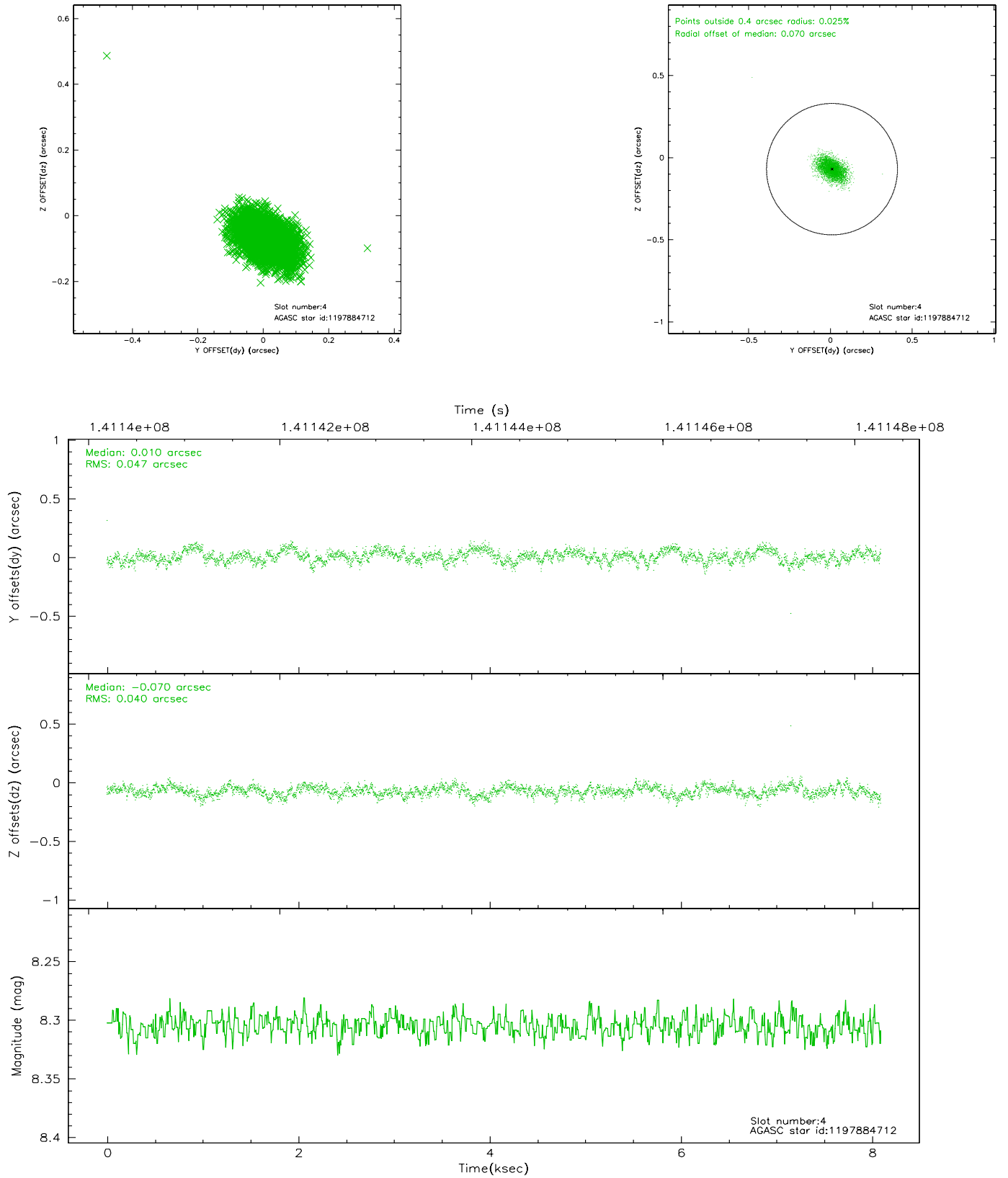
slot	status	id	mag	n_pts	med_dy	med_dz	dr1	dr2	ra	dec	mean_y	mean_z
0	FID	ACIS-S-2	7.11	1974	0.016	0.023	0.005	0.010	0.000000	0.000000	-755.41	-1727.87
1	FID	ACIS-S-4	7.20	1974	-0.036	-0.007	0.006	0.009	0.000000	0.000000	2157.49	179.90
2	FID	ACIS-S-6	7.35	1974	-0.008	-0.009	0.007	0.011	0.000000	0.000000	407.42	818.06
3	GUIDE	1197885328	7.24	3949	-0.086	0.103	0.054	0.085	16.283090	-71.733943	-40.19	-564.31
4	GUIDE	1197884712	8.30	3949	0.010	-0.070	0.064	0.107	16.087398	-72.252690	-1750.20	217.11
5	GUIDE	1197750640	9.73	3943	0.059	-0.072	0.103	0.168	15.758835	-72.088048	-1075.89	382.65
6	GUIDE	1197878768	9.62	3946	-0.113	0.059	0.094	0.154	16.656786	-71.304581	1295.12	-1451.44
7	GUIDE	1197749664	9.57	3944	0.123	-0.021	0.104	0.173	15.809015	-72.366369	-2047.13	631.38

2.4 Star Slots

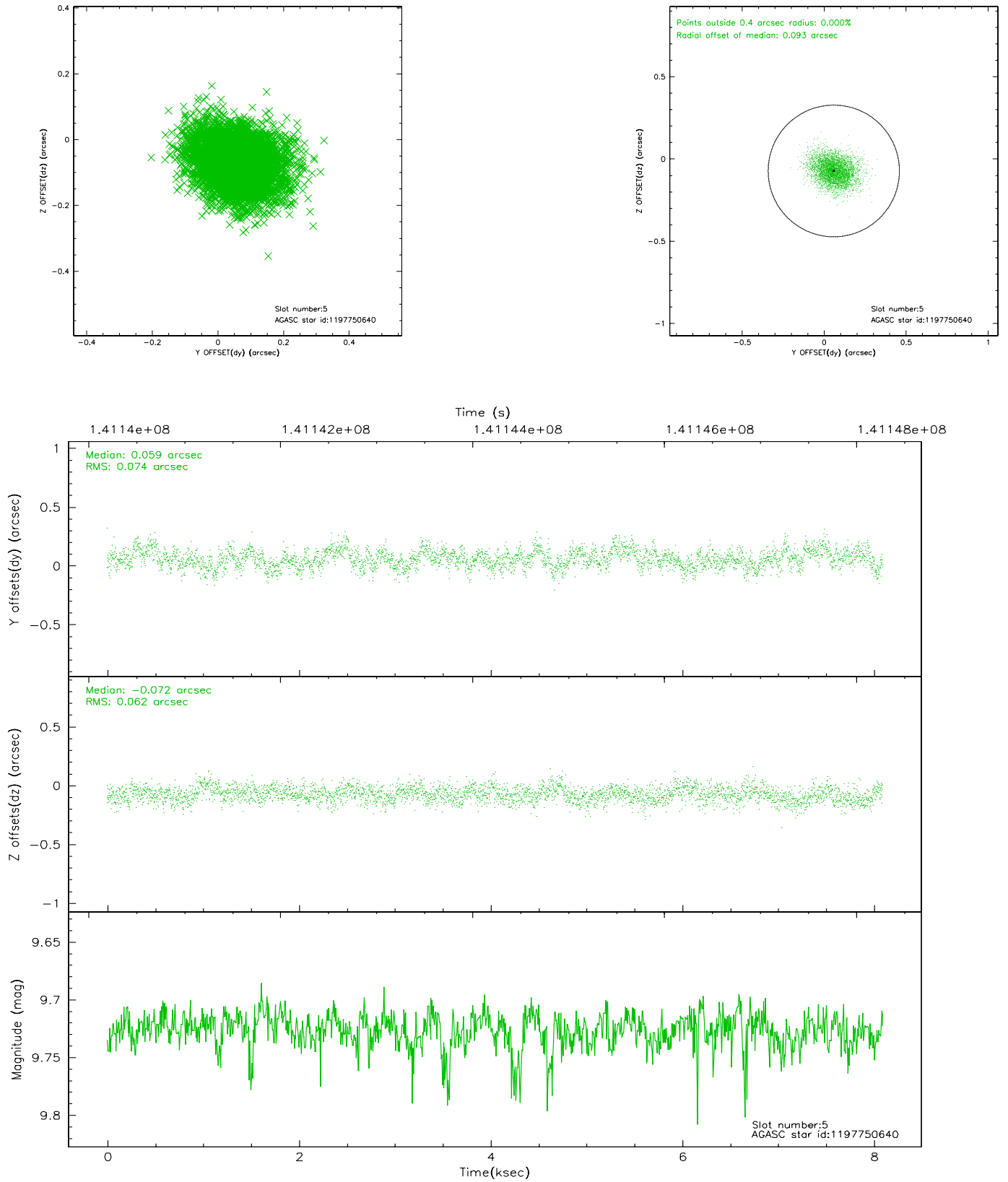
2.4.1 Slot 3



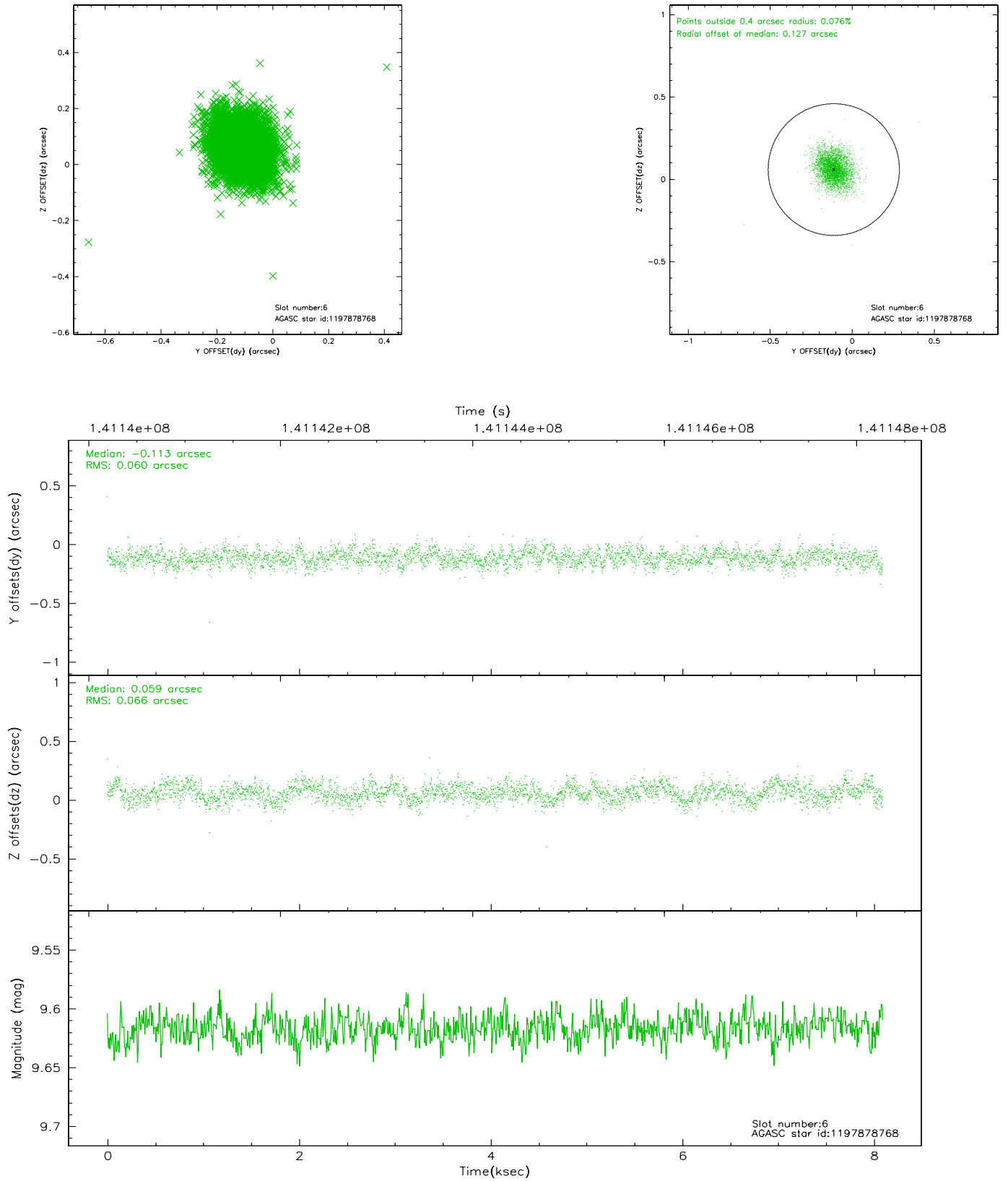
2.4.2 Slot 4



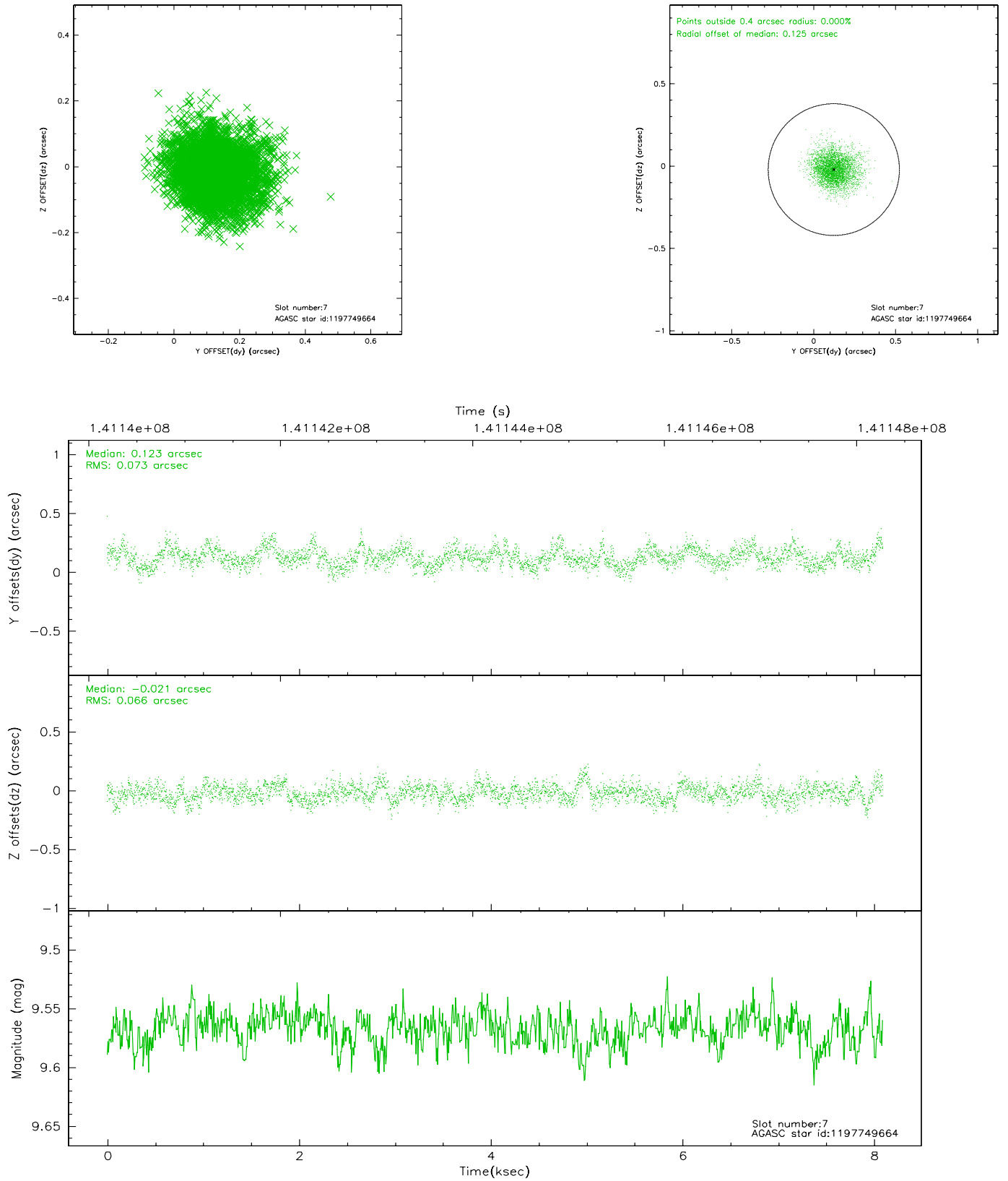
2.4.3 Slot 5



2.4.4 Slot 6

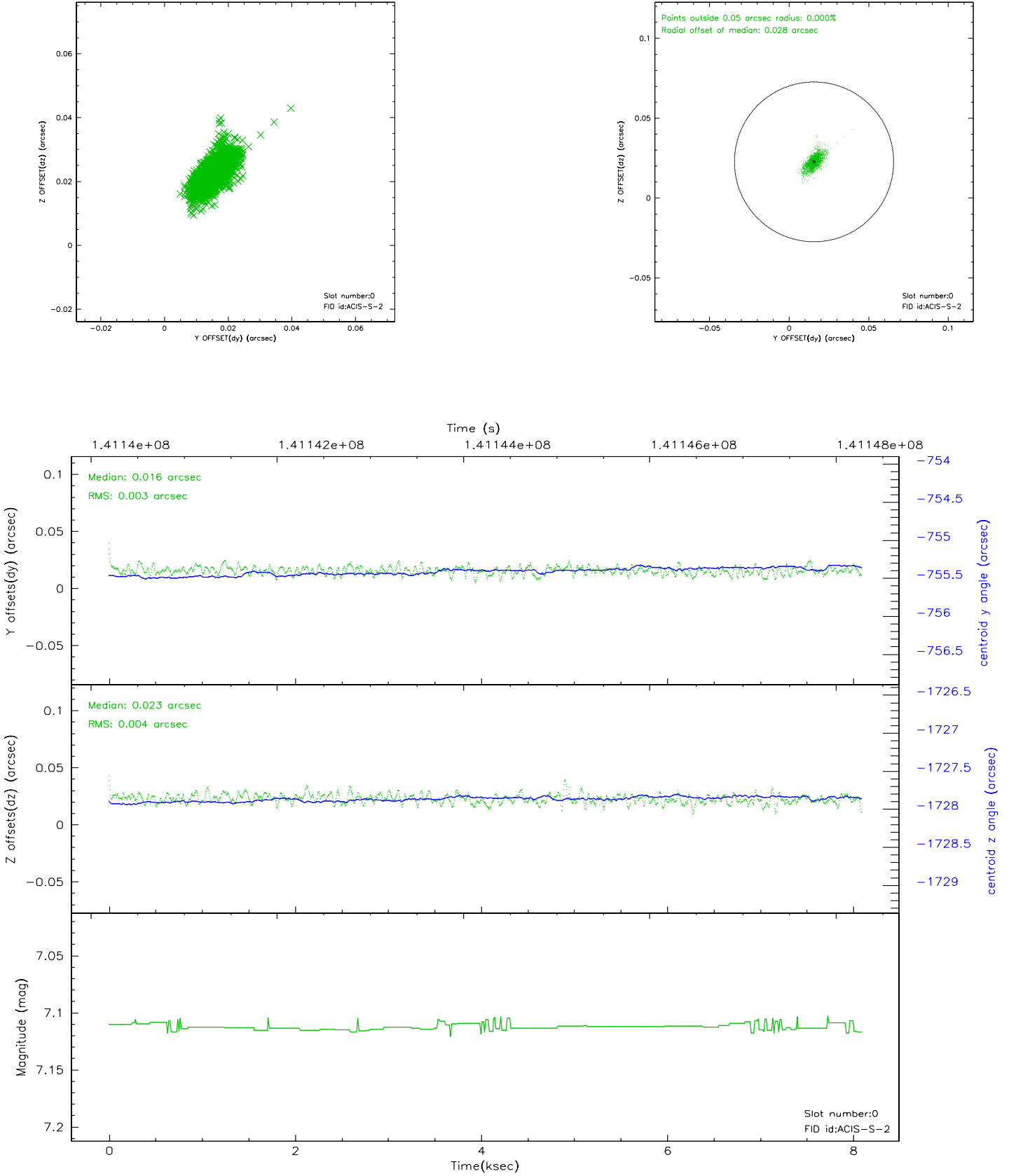


2.4.5 Slot 7

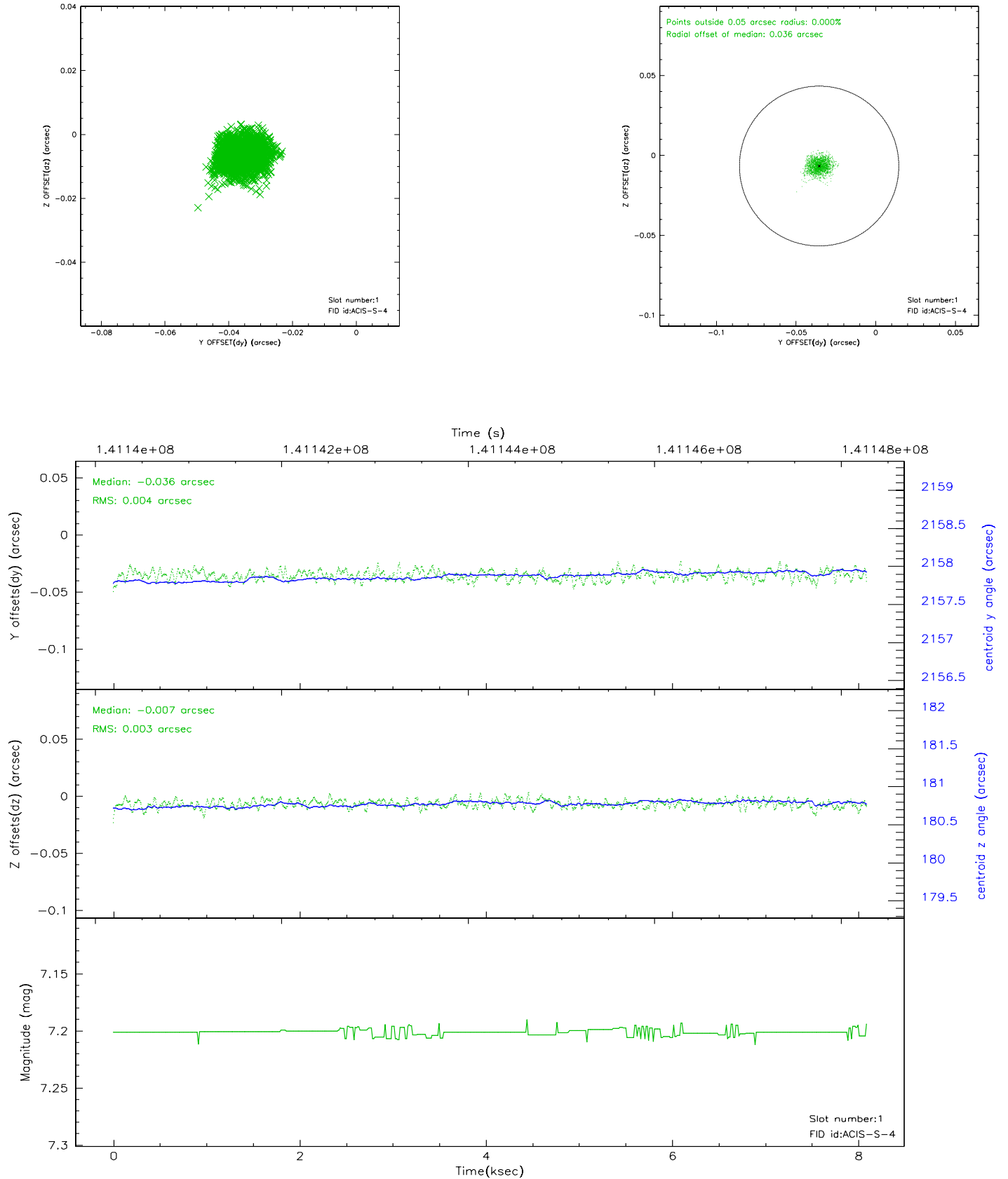


2.5 FID Slots

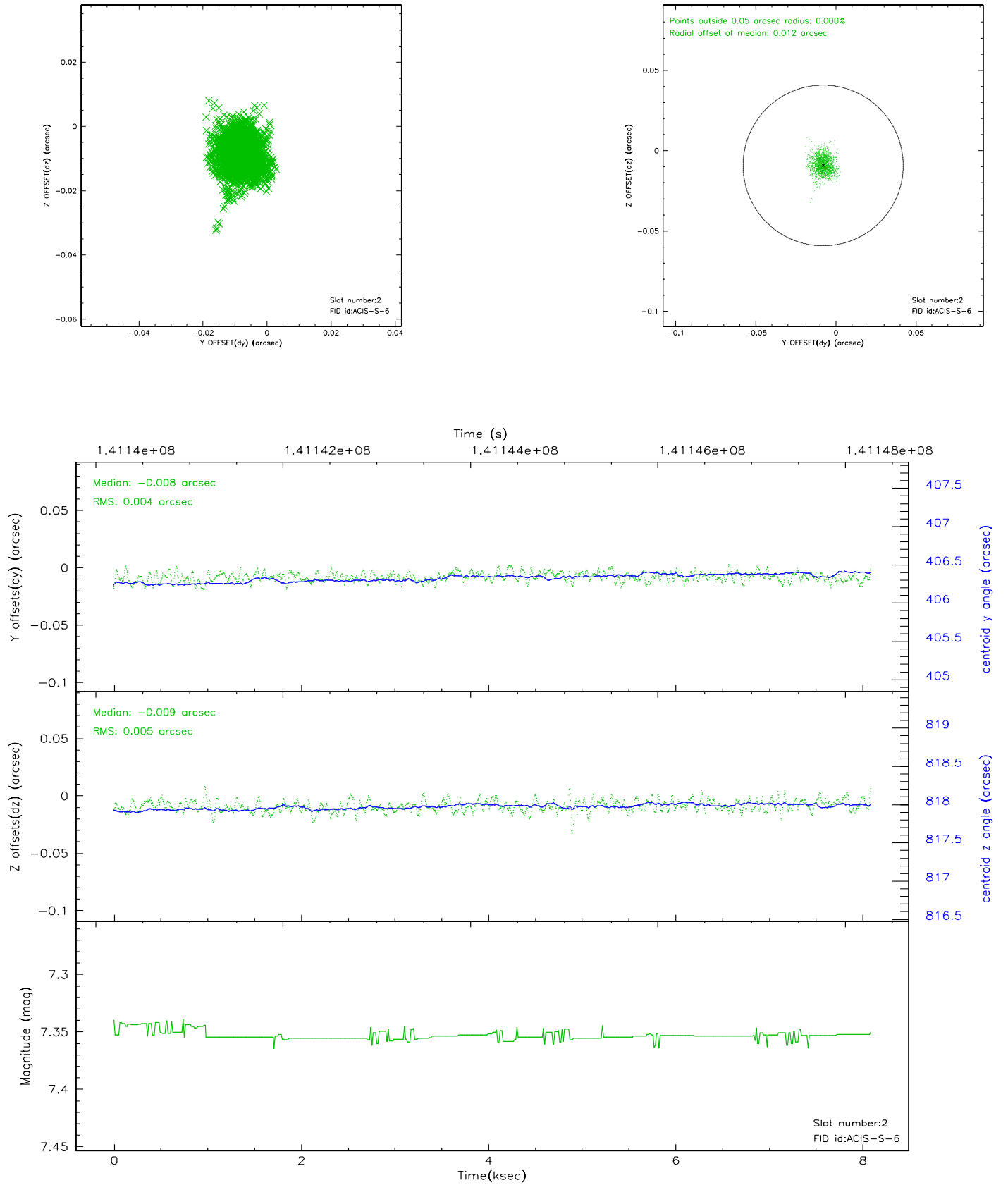
2.5.1 Slot 0



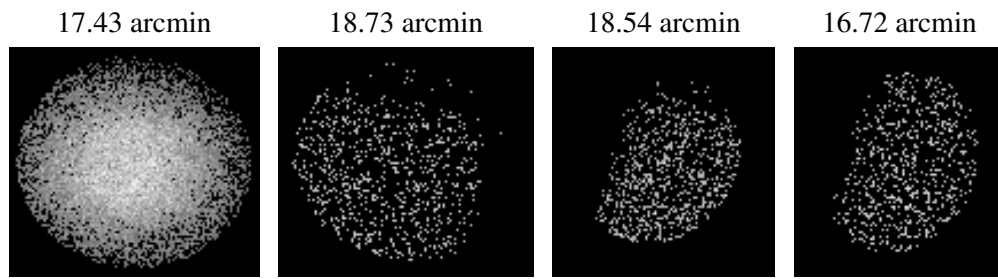
2.5.2 Slot 1



2.5.3 Slot 2



3 Point Sources



A Summary

A.1 Status

V&V Scientist	Beth Sundheim
V&V Date (YYYY-MM-DD)	2006.09.21
V&V Edition	1
V&V Disposition and Status	OK
V&V Charge Time	7.66

A.2 Comments

Window constraint satisfied.