

V&V Reference Report

L2 ASCDS Version : 8.4.5

Observation 2853 - L2 Version 3
Chandra X-Ray Center

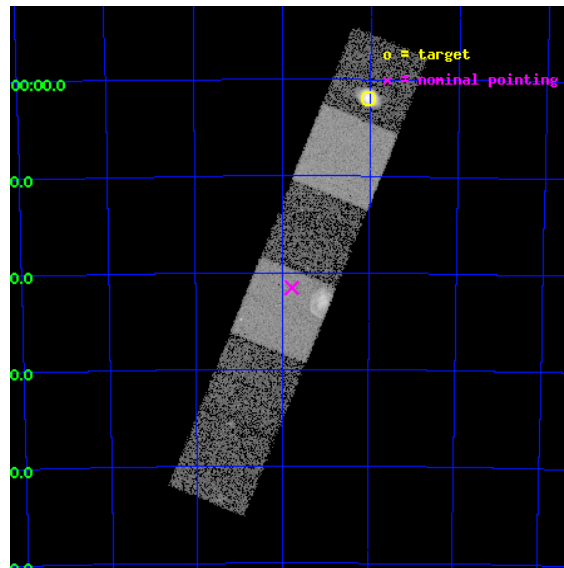
L2 Processing Date : Oct 9 2012

Contents

1	Front	2
2	OBI	3
2.1	OBI	3
2.1.1	Images	3
2.1.2	Bias	3
2.1.3	Parameters	4
2.1.4	Events	4
2.2	Compared Parameters	5
2.3	Aspect	6
2.4	Star Slots	9
2.4.1	Slot 3	9
2.4.2	Slot 4	10
2.4.3	Slot 5	11
2.4.4	Slot 6	12
2.4.5	Slot 7	13
2.5	FID Slots	14
2.5.1	Slot 0	14
2.5.2	Slot 1	15
2.5.3	Slot 2	16
A	Summary	17
A.1	Status	17
A.2	Comments	17

1 Front

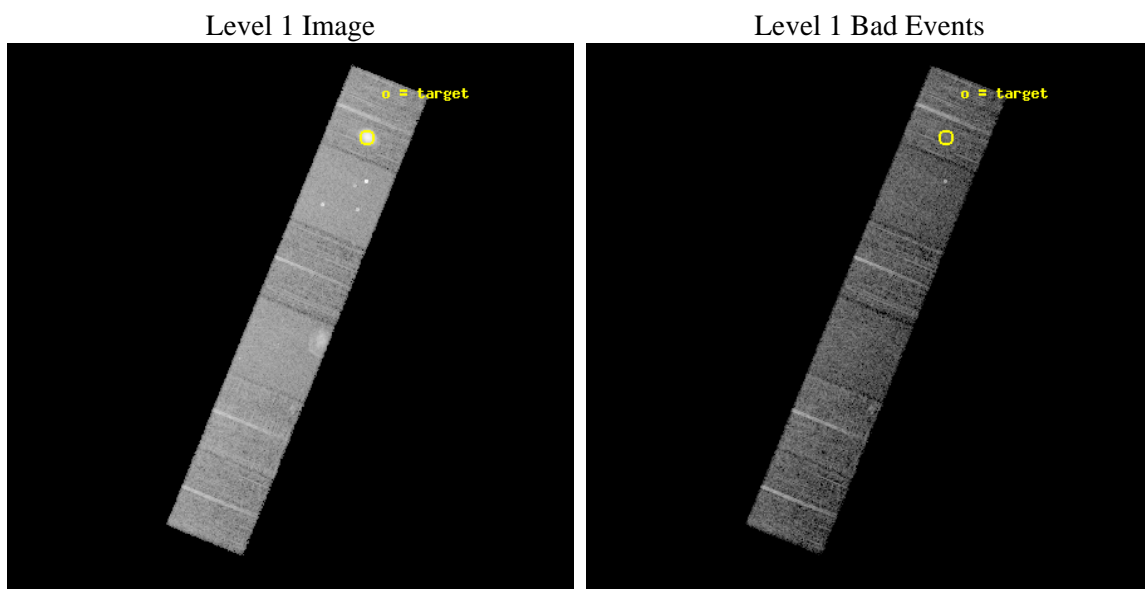
seq_num	590242	Sequence number
obs_id	2853	Observation id
title	AO3B ACIS-S CALIBRATION OBSERVATIONS OF E0102-72	Proposal title
observer	Dr. CXC Calibration	Principal investigator
object	E0102-72.3 [Chip S0, T=120, Offsets=21,0,0]	Source name
dtcycle	0	
cycle	P	events from which exps? Prim/Second/Both
ra_targ	16.01	Observer's specified target RA [deg]
dec_targ	-72.032028	Observer's specified target Dec [deg]
ra_nom	16.444639535578	Nominal RA [deg]
dec_nom	-72.359298503132	Nominal Dec [deg]
roll_nom	112.19085761367	Nominal Roll [deg]
revision	3	Processing version of data
ontime	7855.9999707341	Sum of GTIs [s]
livetime	7756.5225687894	Livetime [s]
ontime4	7855.9999707341	Sum of GTIs [s]
ontime5	7855.9999707341	Sum of GTIs [s]
ontime6	7855.9999707341	Sum of GTIs [s]
ontime7	7855.9999707341	Sum of GTIs [s]
ontime8	7855.9999707341	Sum of GTIs [s]
ontime9	7855.9999707341	Sum of GTIs [s]
l2events	105260	Number of level 2 events



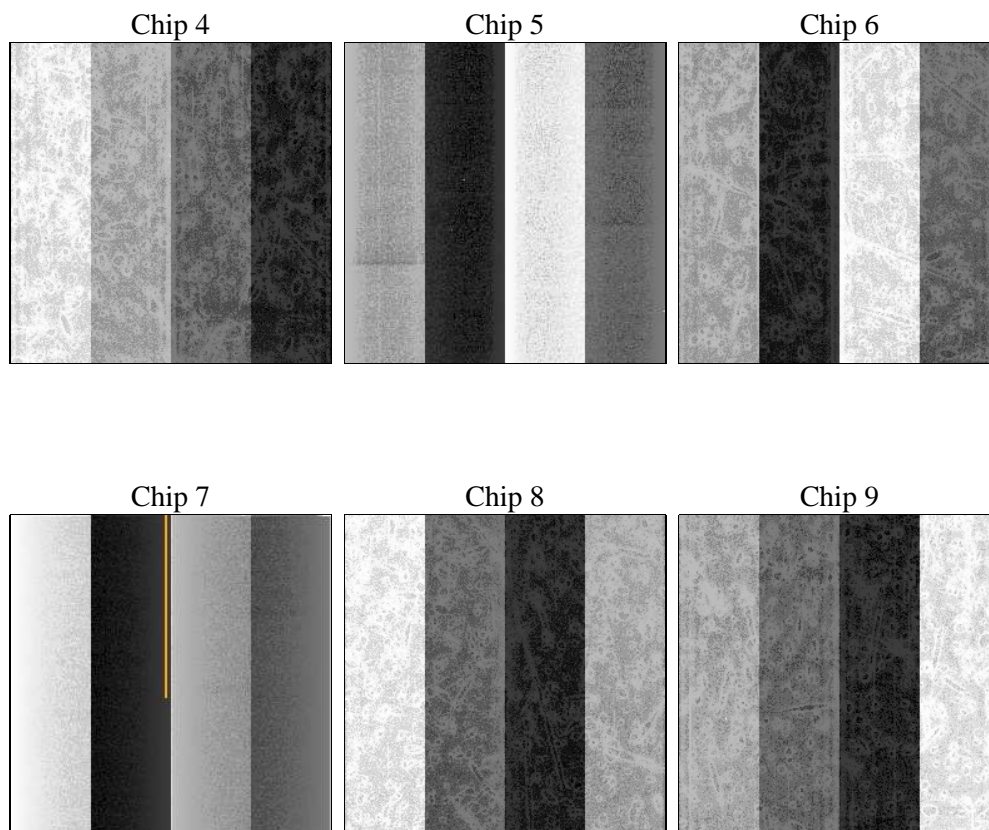
2 OBI

2.1 OBI

2.1.1 Images



2.1.2 Bias



2.1.3 Parameters

obi_num	0	Obi number	sched_exp_time	7900.000000	[s] Scheduled observation exposure time
ascdsver	8.4.5	Processing system revision	ontime	7855.9999707341	Sum of GTIs [s]
caldsver	4.5.2	 	ontime4	7855.9999707341	Sum of GTIs [s]
date	2012-10-10T00:58:12	Date and time of file creation	ontime5	7855.9999707341	Sum of GTIs [s]
revision	3	Processing version of data	ontime6	7855.9999707341	Sum of GTIs [s]
			ontime7	7855.9999707341	Sum of GTIs [s]
			ontime8	7855.9999707341	Sum of GTIs [s]
			ontime9	7855.9999707341	Sum of GTIs [s]
			l1events	397373	Number of level 1 events

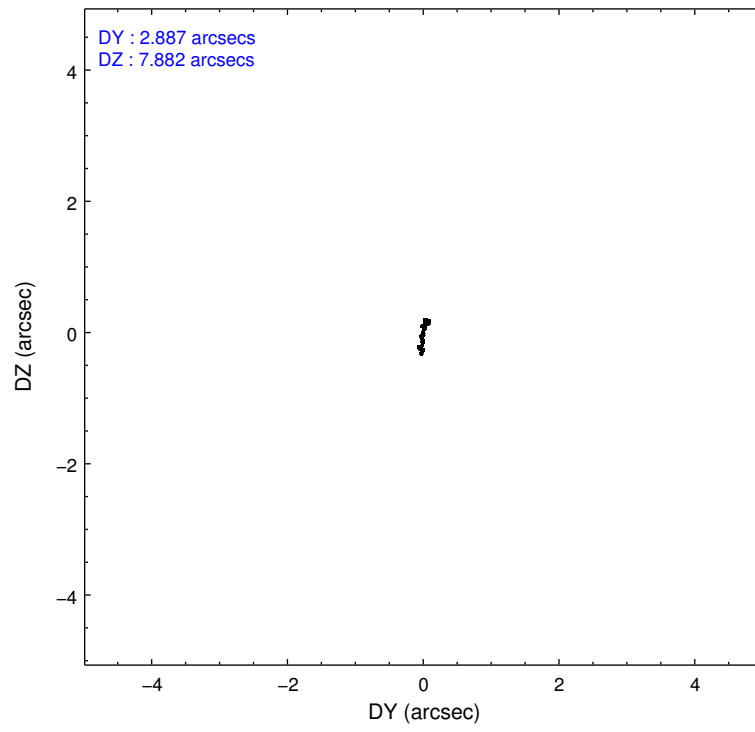
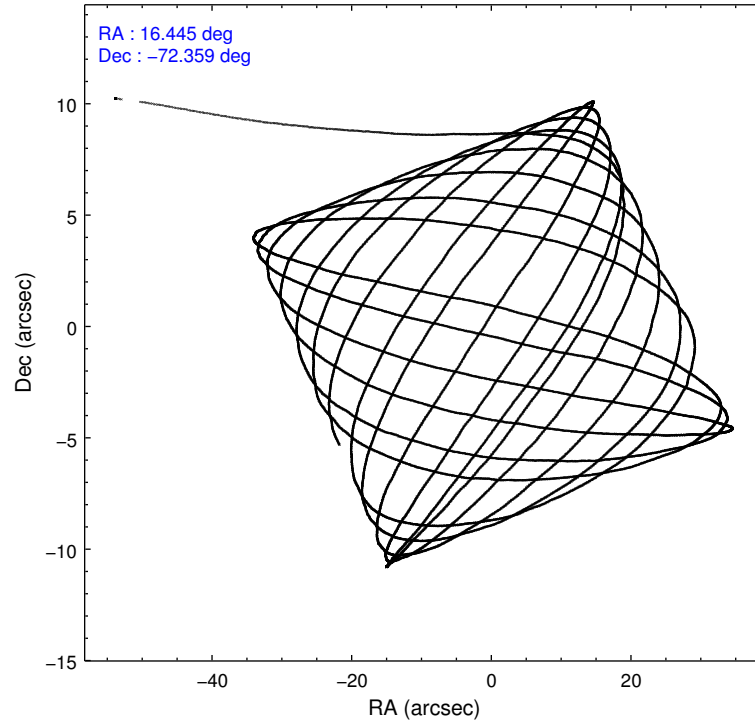
2.1.4 Events

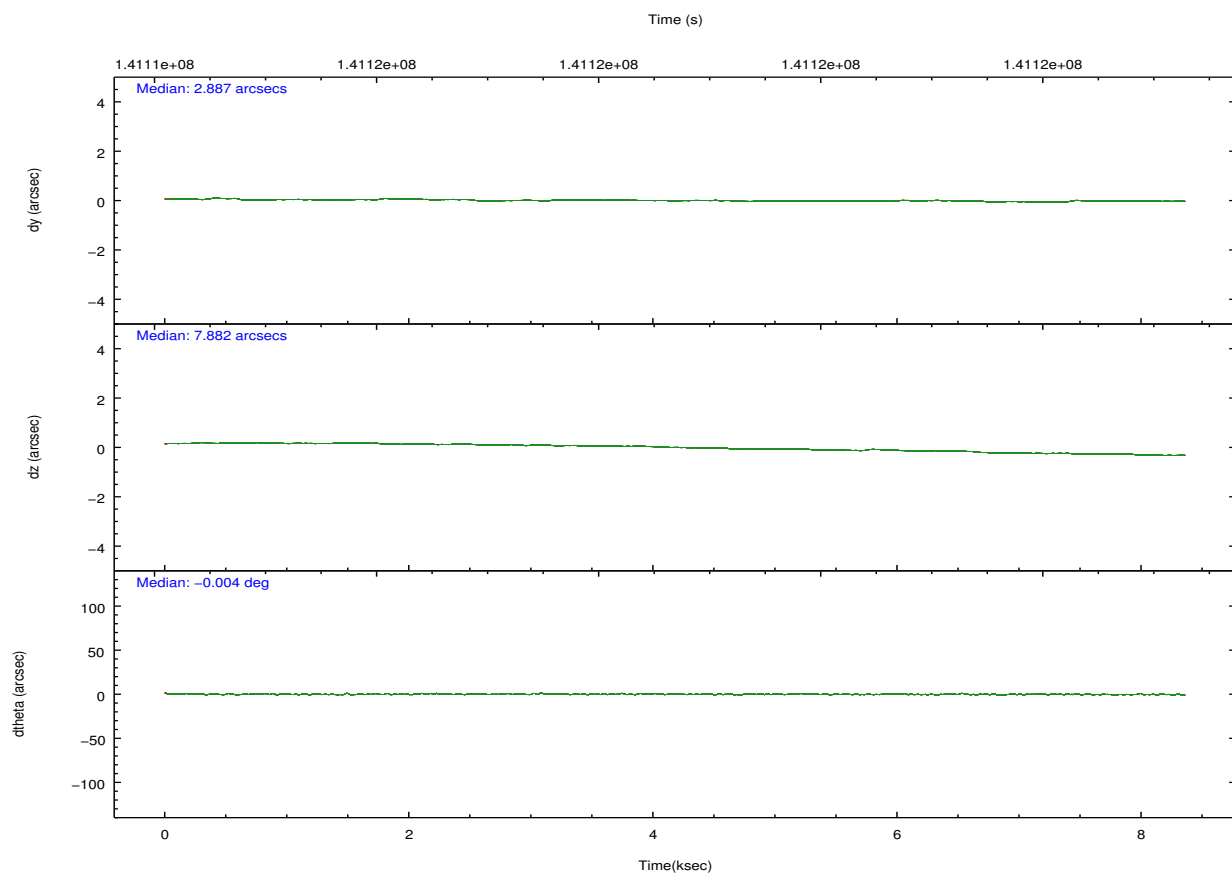
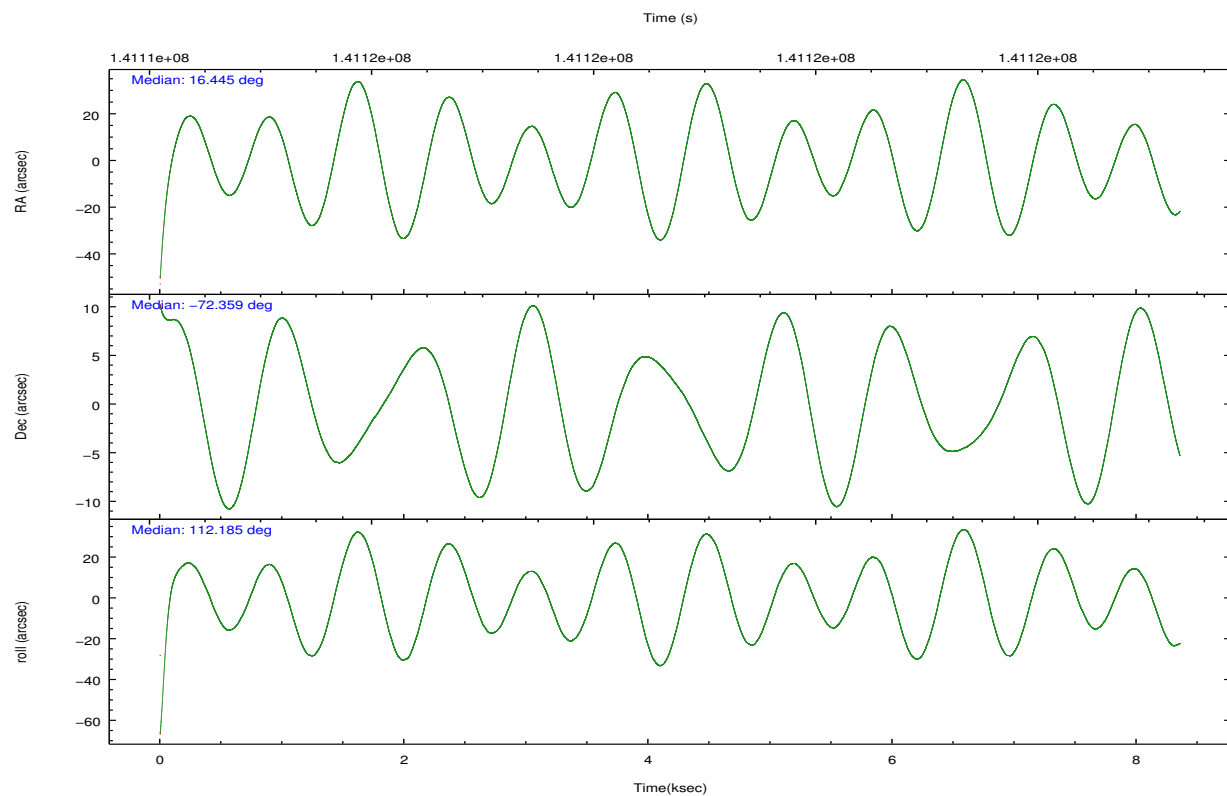
	ccd 4	ccd 5	ccd 6	ccd 7	ccd 8	ccd 9		ccd 4	ccd 5	ccd 6	ccd 7	ccd 8	ccd 9
level 1 events	78653	78386	52062	73300	65031	49941	grade 0 events	20007	5532	2609	4538	4062	2603
rejected events	52939	40566	45858	39914	52000	43604		25%	7%	5%	6%	6%	5%
rejected %	67%	51%	88%	54%	79%	87%	grade 1 events	112	420	22	73	37	18
								0%	0%	0%	0%	0%	0%
							grade 2 events	2831	11310	1244	7098	2975	1322
								3%	14%	2%	9%	4%	2%
							grade 3 events	861	1661	604	3253	1346	584
								1%	2%	1%	4%	2%	1%
							grade 4 events	852	1499	591	3149	1249	574
								1%	1%	1%	4%	1%	1%
							grade 5 events	1888	5532	2297	6523	2886	2296
								2%	7%	4%	8%	4%	4%
							grade 6 events	1205	17847	1164	15394	3404	1261
								1%	22%	2%	21%	5%	2%
							grade 7 events	50897	34585	43531	33272	49072	41283
								64%	44%	83%	45%	75%	82%

2.2 Compared Parameters

Parameter	Planned	Actual	Parameter	Planned	Actual
Instrument	ACIS	ACIS	Obspar format version number	7	7
Detector	ACIS-456789	ACIS-456789	Obspar file type	PREDICTED	ACTUAL
Grating	NONE	NONE	Obspar update status	NONE	UPDATED
Data mode	FAINT	FAINT	Number of optional ACIS chips dropped	0	0
Observation mode	POINTING	POINTING	On-chip summing requested	N	N
[deg] Pointing RA	16.516494	16.44463953557844	Subarray requested	NONE	NONE
[deg] Pointing Dec	-72.375782	-72.35929850313184	Alternating exposures requested	N	N
[deg] Pointing Roll	112.102748	112.1908576136743	[s] Primary exposure time	0.000000	3.2
[s] Window start time (MET)	139276864.184000	139276864.184000			
[s] Window stop time (MET)	141782464.184000	141782464.184000			
[mm] SIM focus pos	-0.684267	-0.6828225247311905			
[mm] SIM defocus	0	0.001444936568705701			
[mm] SIM translation stage pos	-190.132523	-190.1425803651734			
[mm] SIM translation stage offset	0	0.01005778216563158			
[s] Observation start time (MET)	141114973.184000	141113876.35303			
Observation start date	2002-06-22T06:35:09	2002-06-22T06:17:56			
[s] Observation end time (MET)	141122873.184000	141123007.0534			
Observation end date	2002-06-22T08:46:49	2002-06-22T08:50:07			
Read mode	TIMED	TIMED			

2.3 Aspect



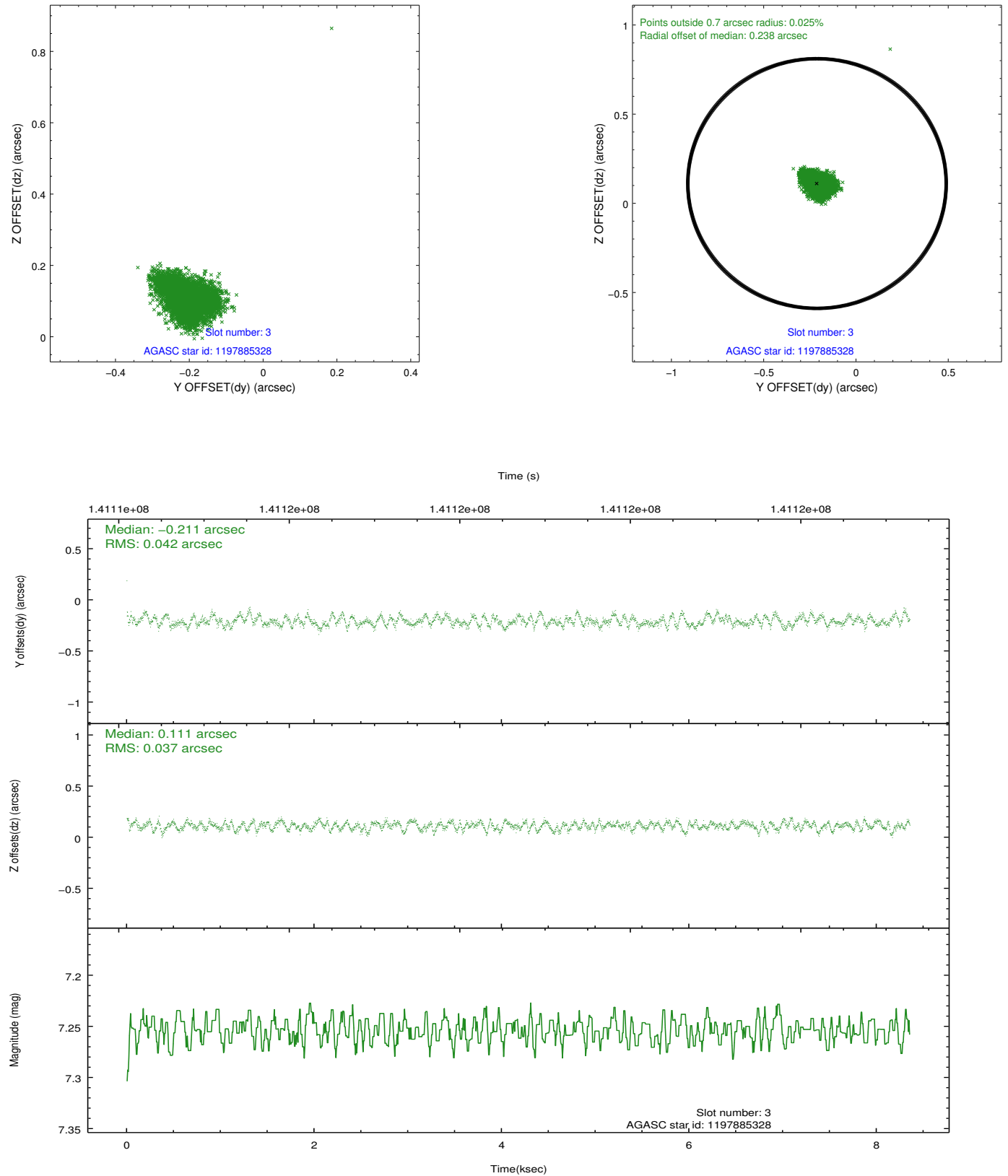


Slot Statistics

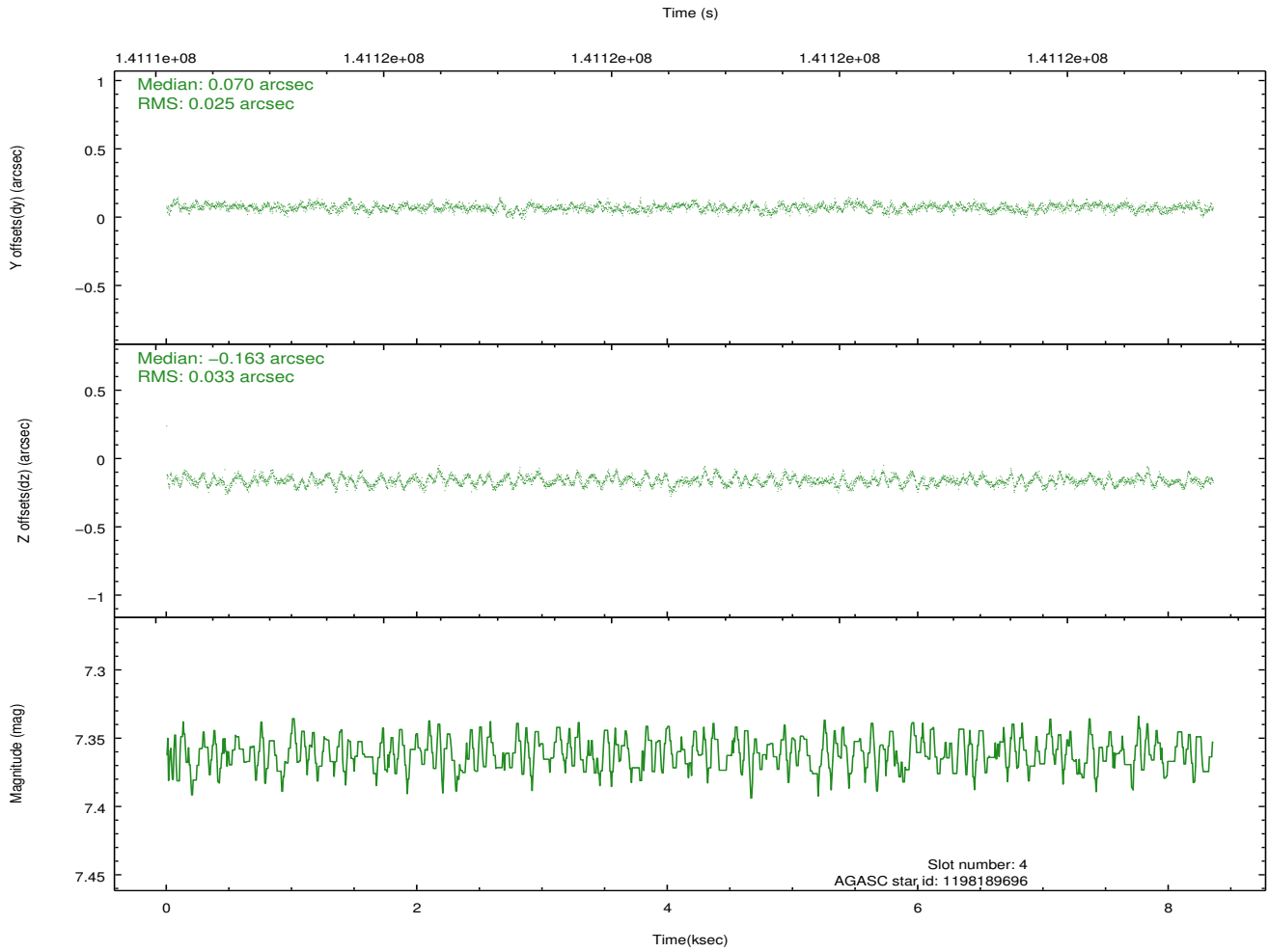
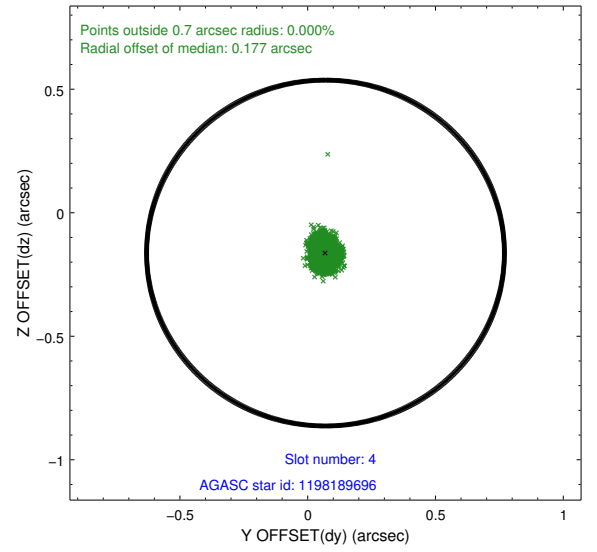
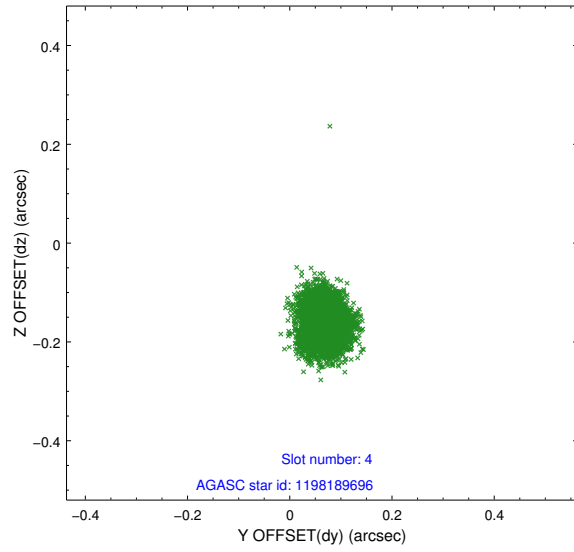
slot	status	id	mag	n_pts	med_dy	med_dz	dr1	dr2	ra	dec	mean_y	mean_z
0	FID	ACIS-S-2	7.11	2038	-0.006	-0.001	0.007	0.011	0.000000	0.000000	-755.55	-1729.00
1	FID	ACIS-S-4	7.20	2039	-0.031	0.003	0.005	0.010	0.000000	0.000000	2157.41	178.79
2	FID	ACIS-S-5	7.24	2039	0.007	0.006	0.007	0.012	0.000000	0.000000	-1807.51	173.24
3	GUIDE	1197885328	7.25	4075	-0.211	0.111	0.059	0.091	16.283090	-71.733943	2239.53	-625.01
4	GUIDE	1198189696	7.36	4076	0.070	-0.163	0.044	0.070	15.223750	-72.697522	-565.58	1723.49
5	GUIDE	1197884536	8.50	4076	-0.052	0.029	0.066	0.106	17.160729	-71.835289	1527.35	-1399.83
6	GUIDE	1198283128	7.61	4077	-0.047	0.098	0.049	0.077	17.272580	-72.642428	-1199.07	-389.48
7	GUIDE	1198282744	9.00	4075	0.242	-0.073	0.063	0.101	17.028326	-73.013356	-2331.19	365.47

2.4 Star Slots

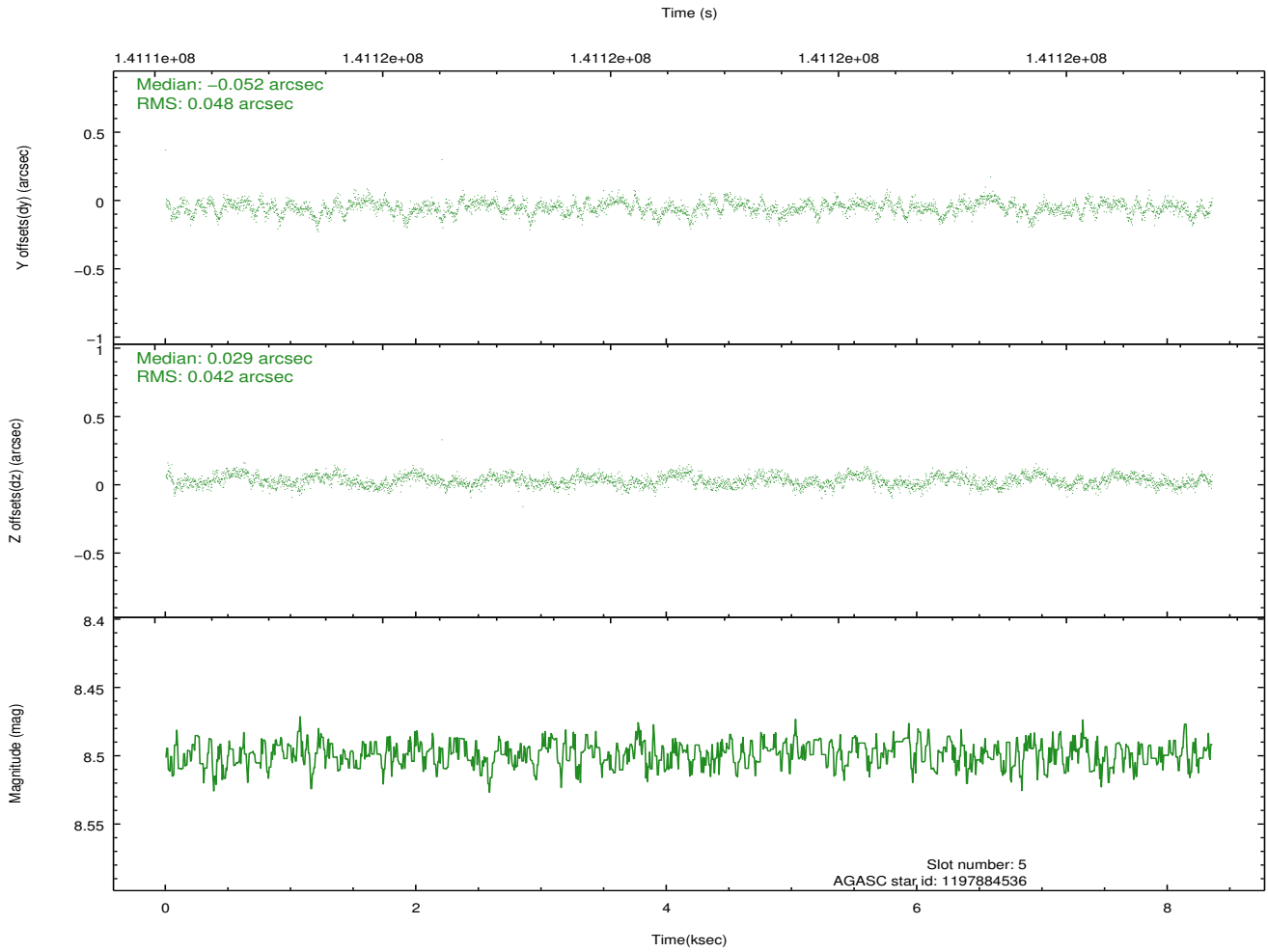
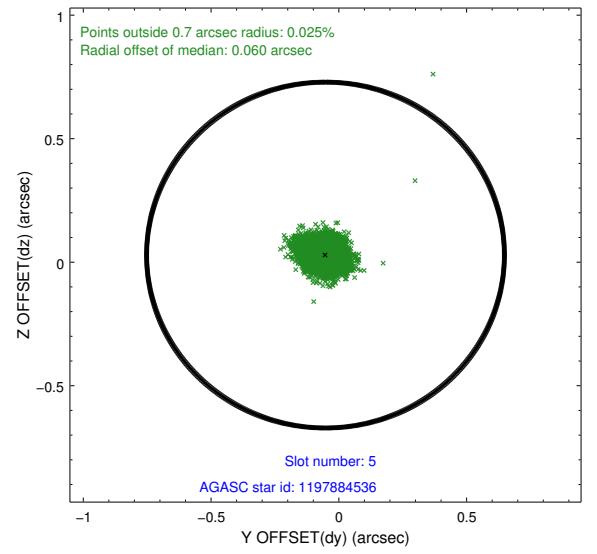
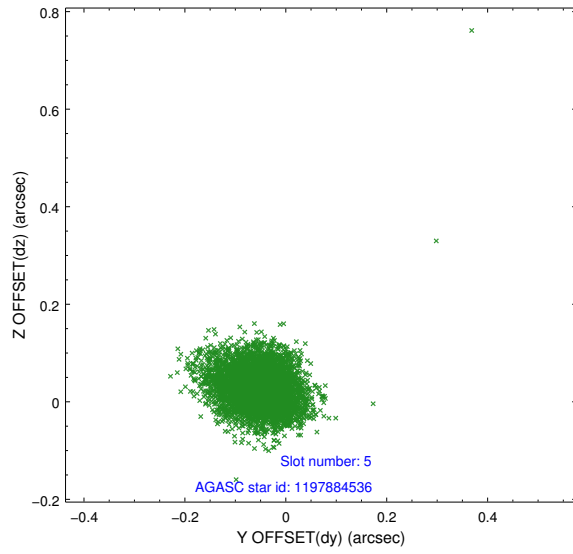
2.4.1 Slot 3



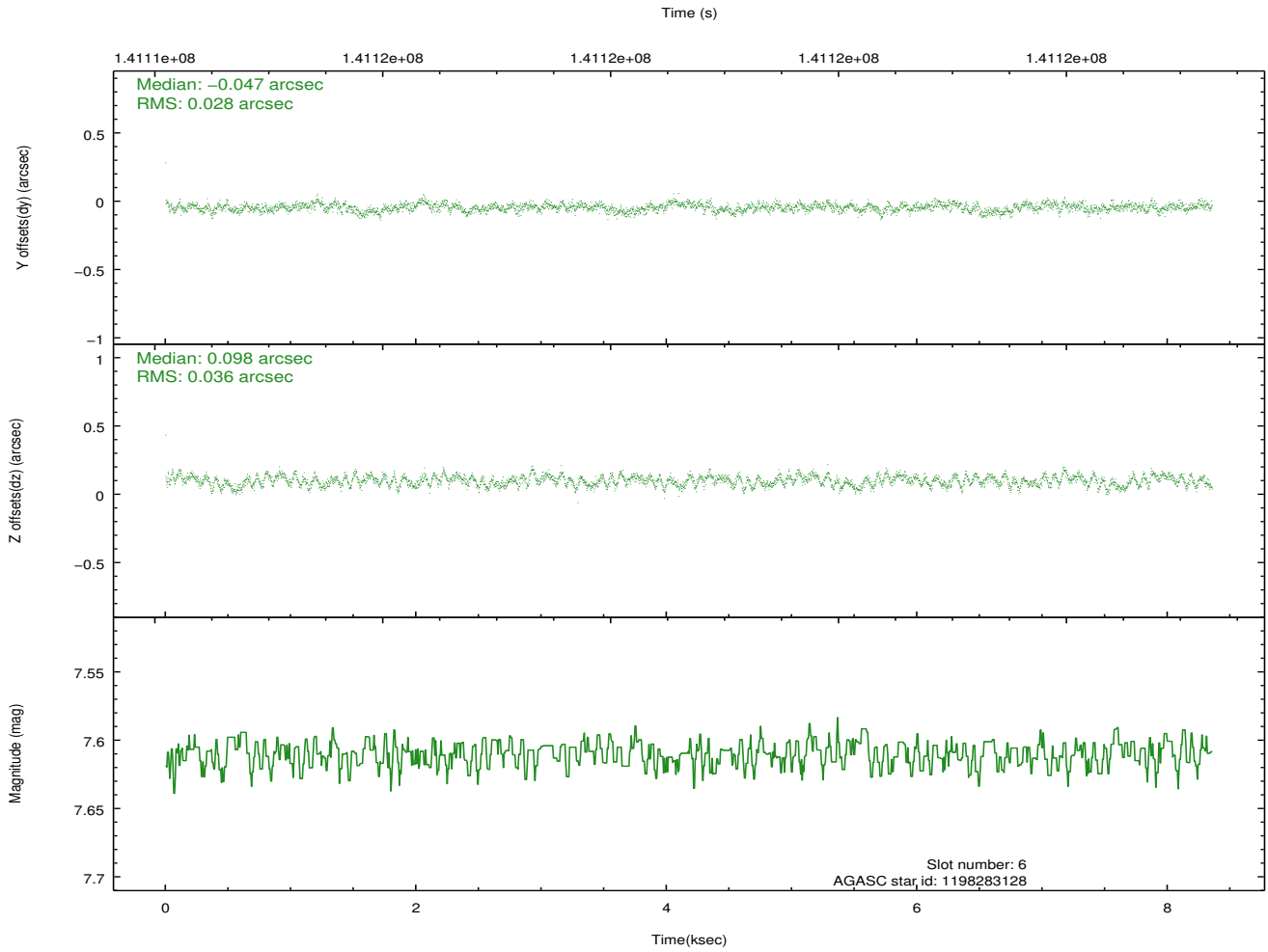
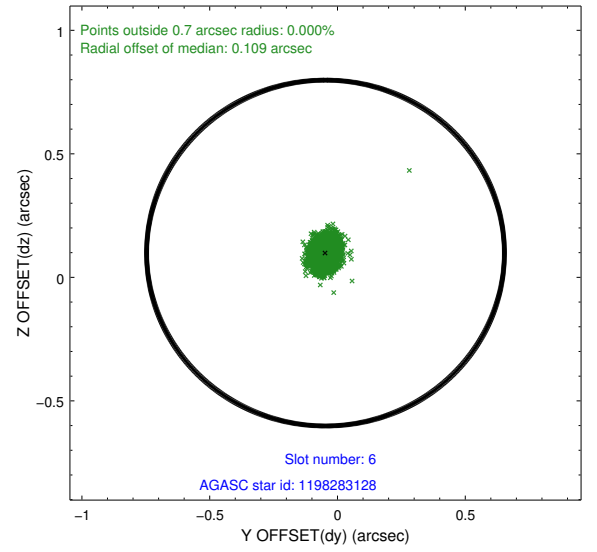
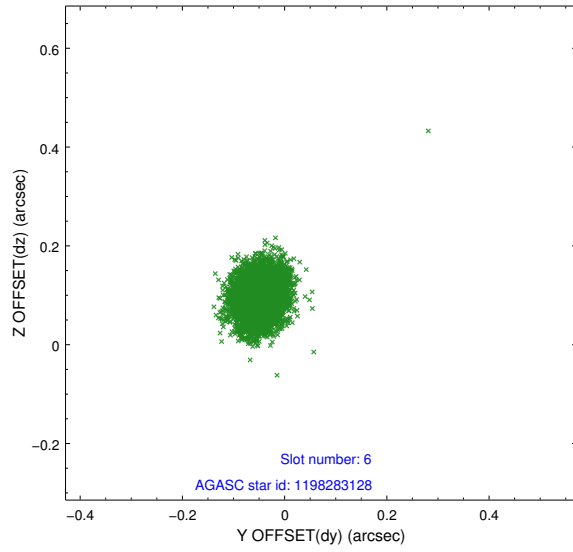
2.4.2 Slot 4



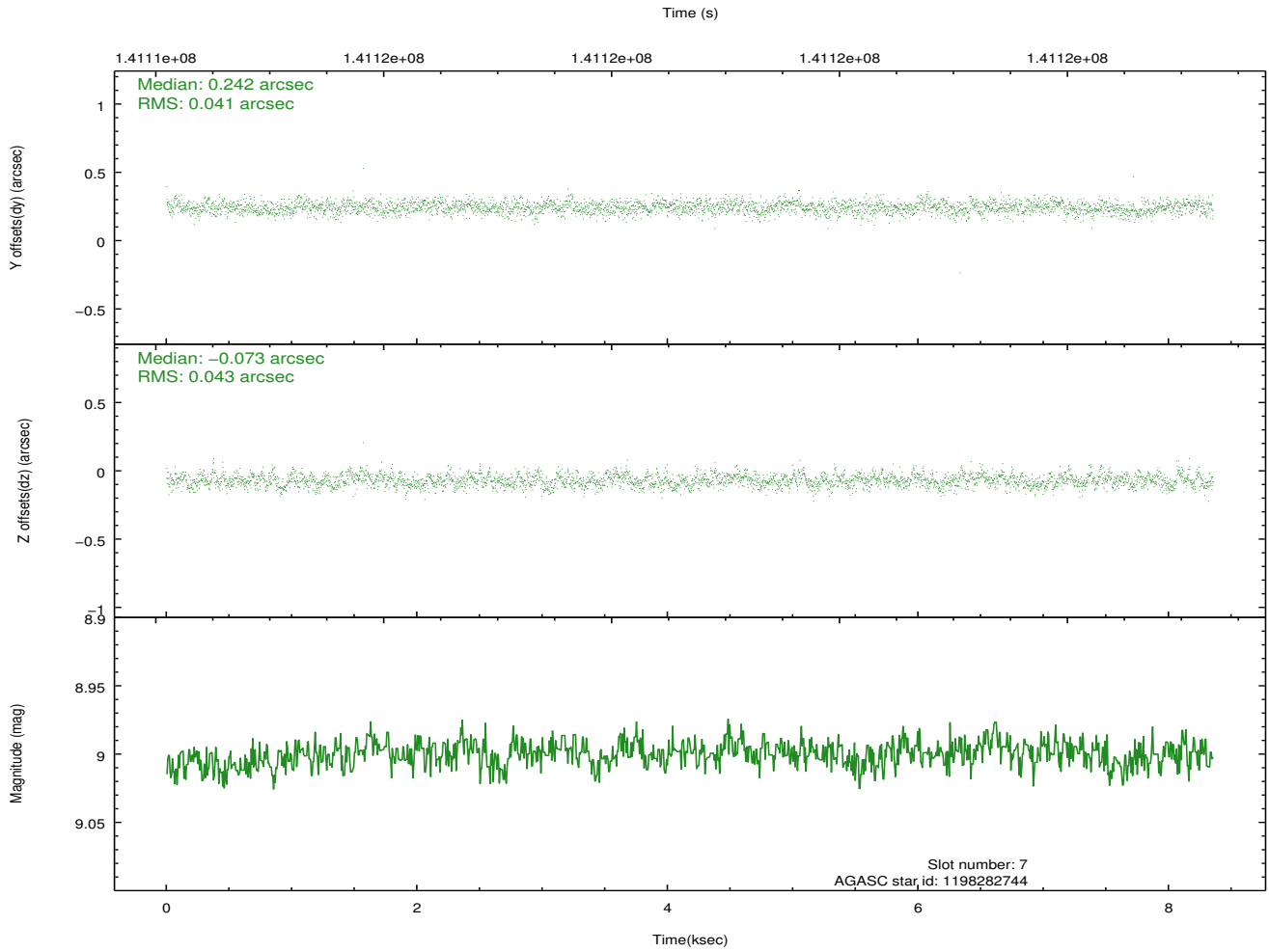
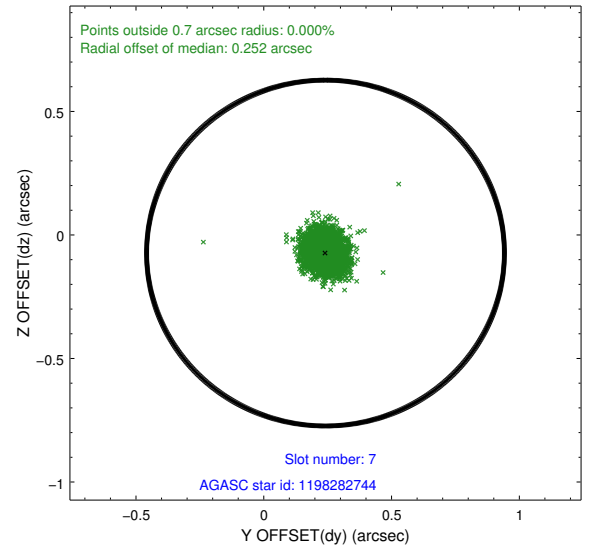
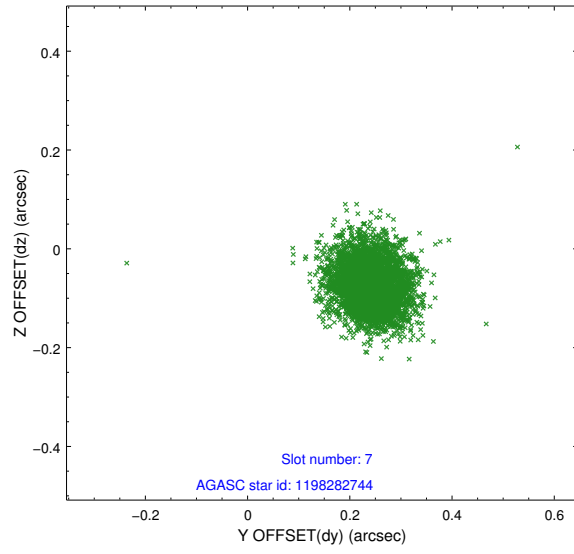
2.4.3 Slot 5



2.4.4 Slot 6

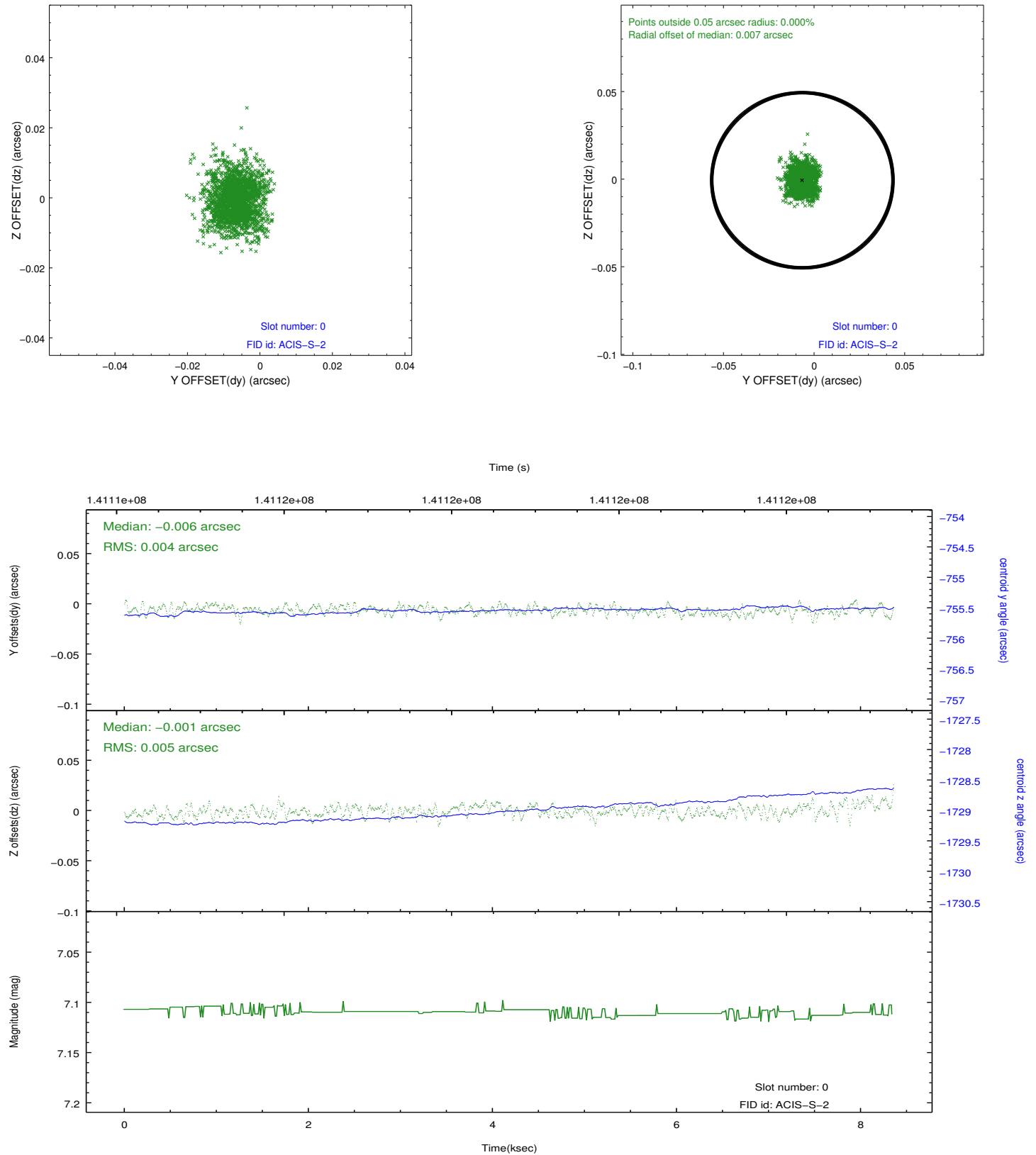


2.4.5 Slot 7

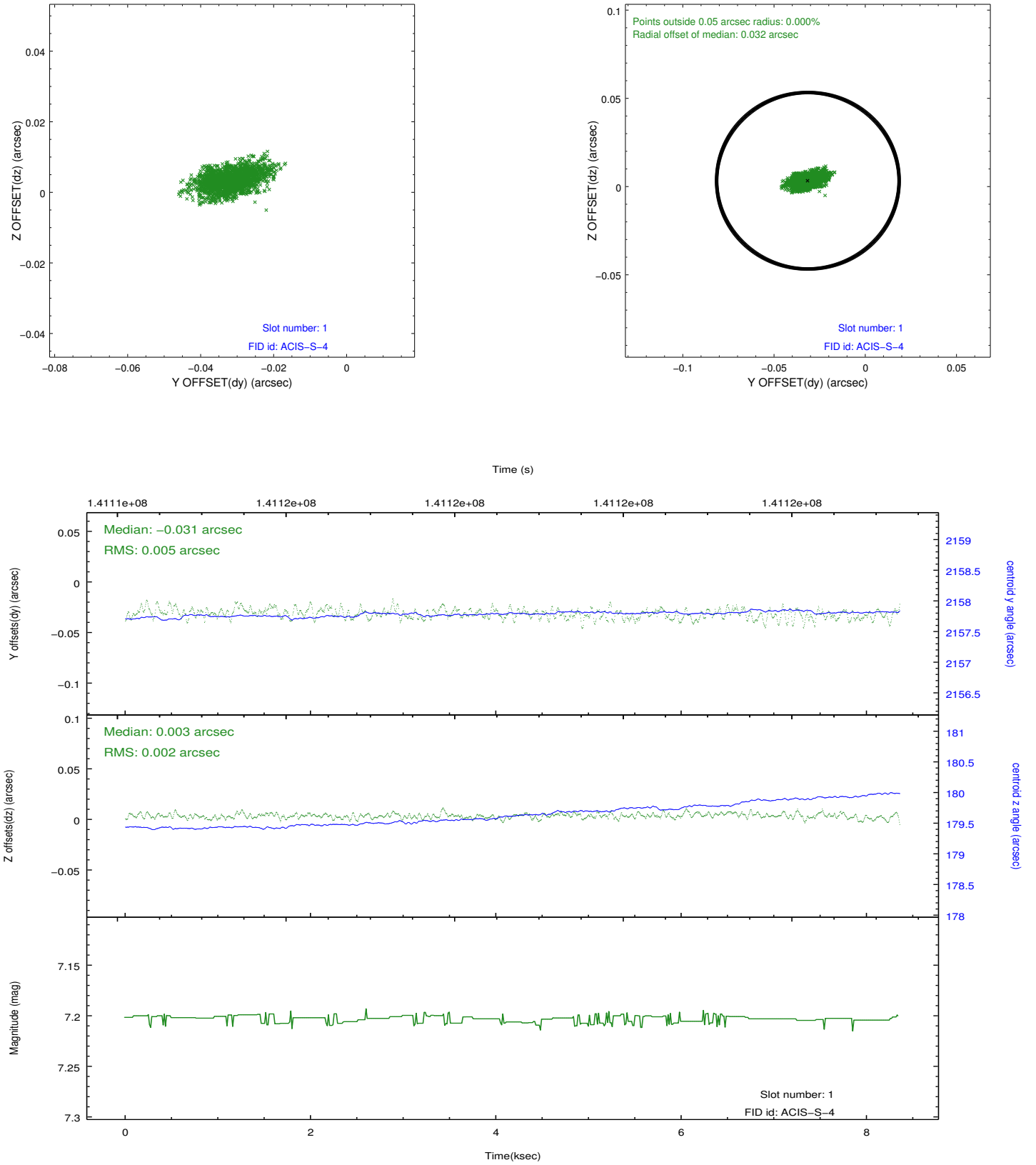


2.5 FID Slots

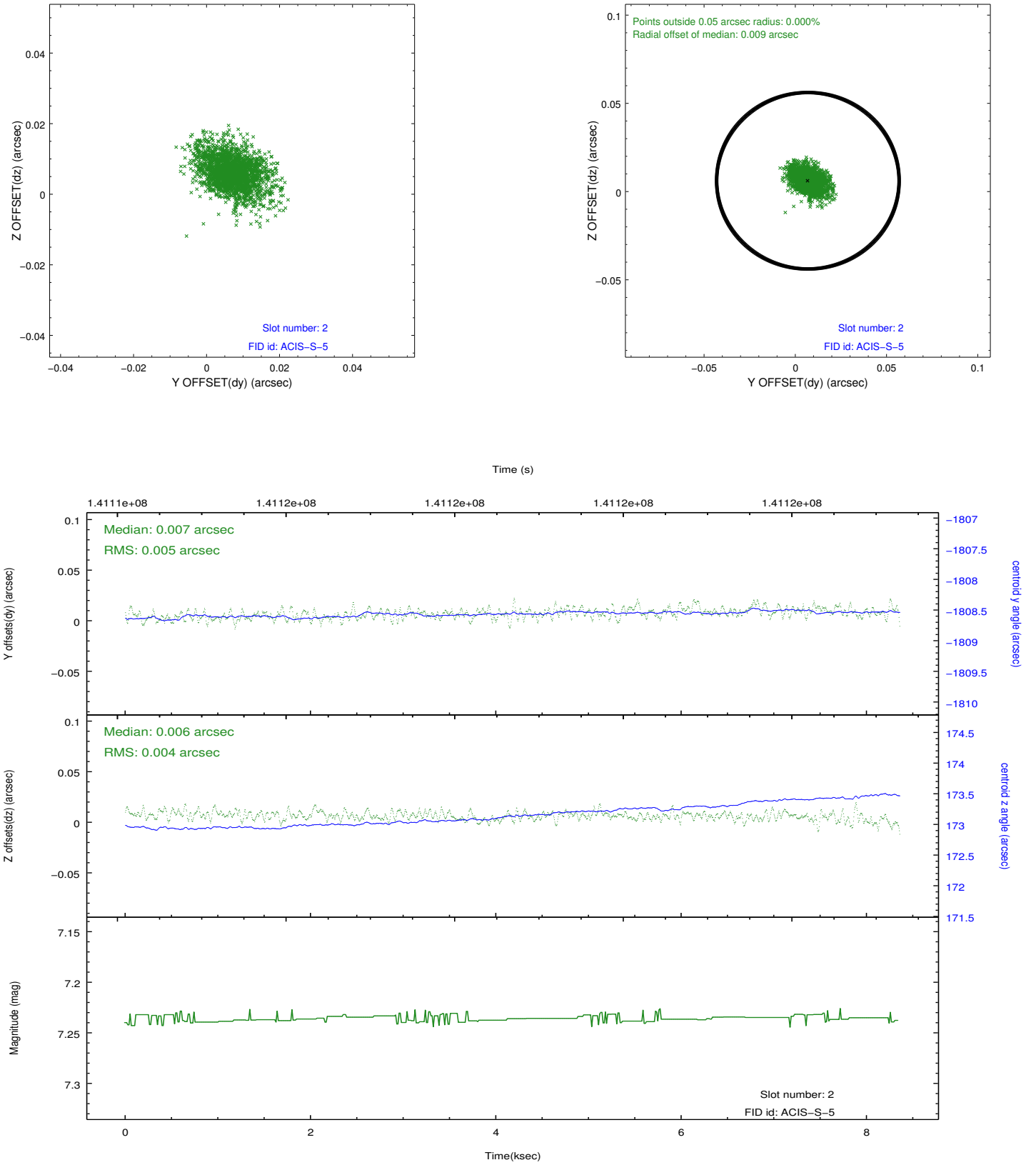
2.5.1 Slot 0



2.5.2 Slot 1



2.5.3 Slot 2



A Summary

A.1 Status

V&V Scientist	Jen Lauer
V&V Date (YYYY-MM-DD)	2012.10.19
V&V Edition	1
V&V Disposition and Status	OK
V&V Charge Time	7.859

A.2 Comments

Window constraint satisfied.