

V&V Reference Report

L2 ASCDS Version : 8.4.5

Observation 2850 - L2 Version 3
Chandra X-Ray Center

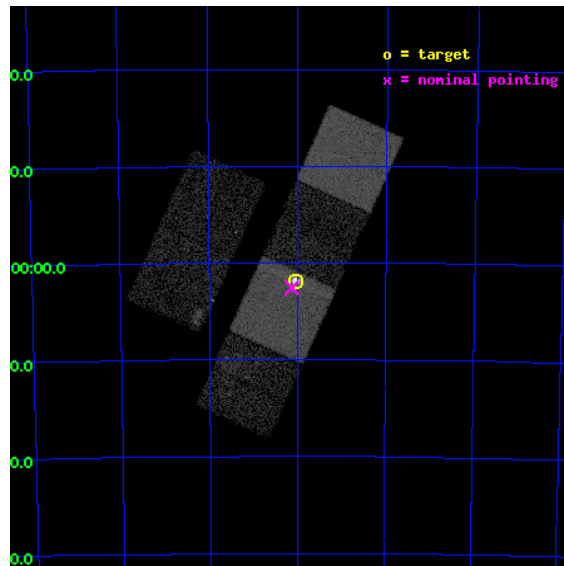
L2 Processing Date : Oct 9 2012

Contents

1	Front	2
2	OBI	3
2.1	OBI	3
2.1.1	Images	3
2.1.2	Bias	3
2.1.3	Parameters	4
2.1.4	Events	4
2.2	Compared Parameters	5
2.3	Aspect	6
2.4	Star Slots	9
2.4.1	Slot 3	9
2.4.2	Slot 4	10
2.4.3	Slot 5	11
2.4.4	Slot 6	12
2.4.5	Slot 7	13
2.5	FID Slots	14
2.5.1	Slot 0	14
2.5.2	Slot 1	15
2.5.3	Slot 2	16
A	Summary	17
A.1	Status	17
A.2	Comments	17

1 Front

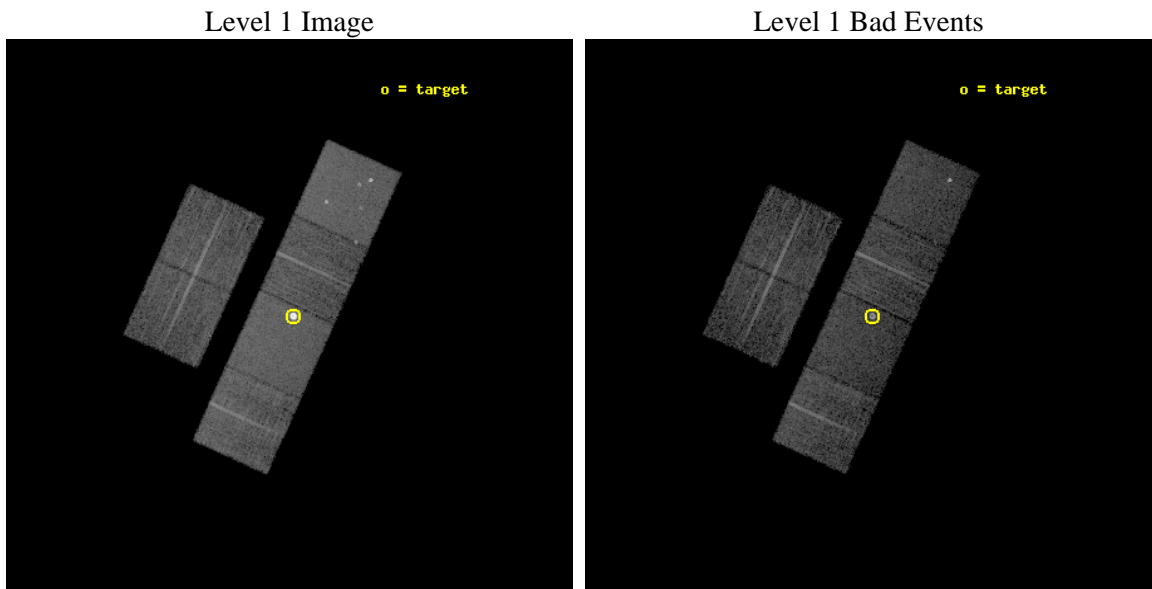
seq_num	590239	Sequence number
obs_id	2850	Observation id
title	AO3B ACIS-S CALIBRATION OBSERVATIONS OF E0102-72	Proposal title
observer	Dr. CXC Calibration	Principal investigator
object	E0102-72.3 [Chip S3, T=120, Offsets=1,0,0]	Source name
dtcycle	0	
cycle	P	events from which exps? Prim/Second/Both
ra_targ	16.01	Observer's specified target RA [deg]
dec_targ	-72.032028	Observer's specified target Dec [deg]
ra_nom	16.031676918881	Nominal RA [deg]
dec_nom	-72.042862736828	Nominal Dec [deg]
roll_nom	114.35039693056	Nominal Roll [deg]
revision	3	Processing version of data
ontime	7859.1999707222	Sum of GTIs [s]
livetime	7759.6820484508	Livetime [s]
ontime2	7859.1999707222	Sum of GTIs [s]
ontime3	7859.1999707222	Sum of GTIs [s]
ontime5	7859.1999707222	Sum of GTIs [s]
ontime6	7859.1999707222	Sum of GTIs [s]
ontime7	7859.1999707222	Sum of GTIs [s]
ontime8	7859.1999707222	Sum of GTIs [s]
l2events	139110	Number of level 2 events



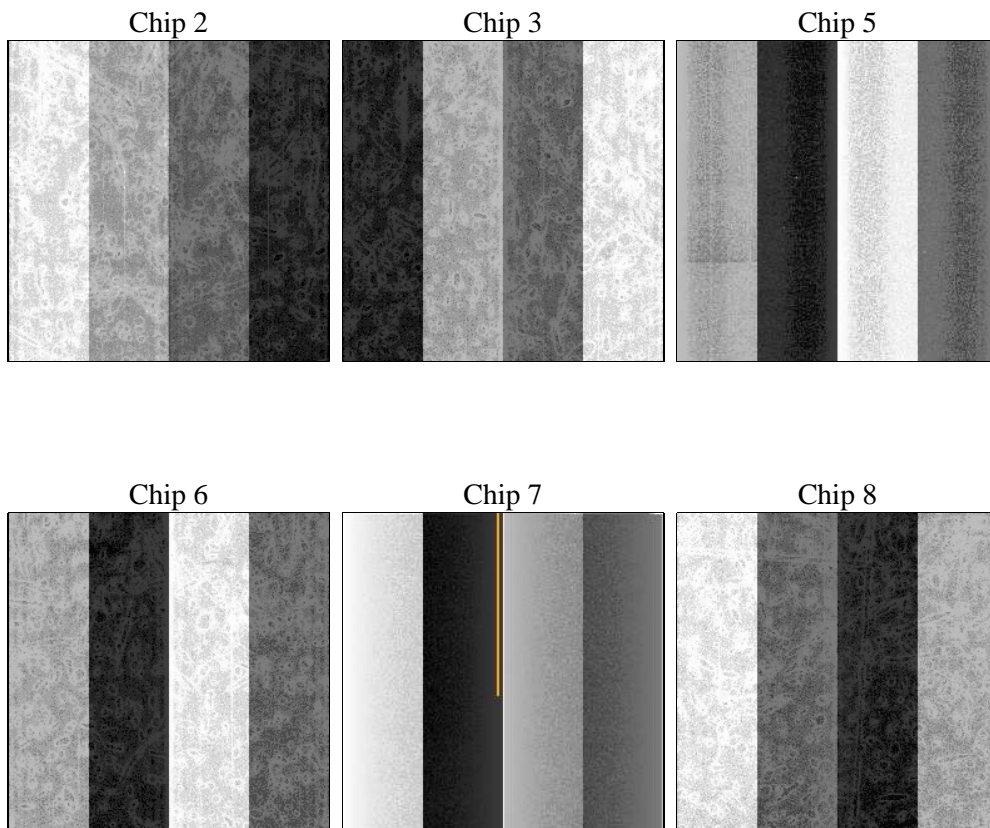
2 OBI

2.1 OBI

2.1.1 Images



2.1.2 Bias



2.1.3 Parameters

obi_num	0	Obi number	sched_exp_time	7900.000000	[s] Scheduled observation exposure time
ascdsver	8.4.5	Processing system revision	ontime	7859.1999707222	Sum of GTIs [s]
caldbver	4.5.2	 	ontime2	7859.1999707222	Sum of GTIs [s]
date	2012-10-10T00:26:42	Date and time of file creation	ontime3	7859.1999707222	Sum of GTIs [s]
revision	3	Processing version of data	ontime5	7859.1999707222	Sum of GTIs [s]
			ontime6	7859.1999707222	Sum of GTIs [s]
			ontime7	7859.1999707222	Sum of GTIs [s]
			ontime8	7859.1999707222	Sum of GTIs [s]
			l1events	416971	Number of level 1 events

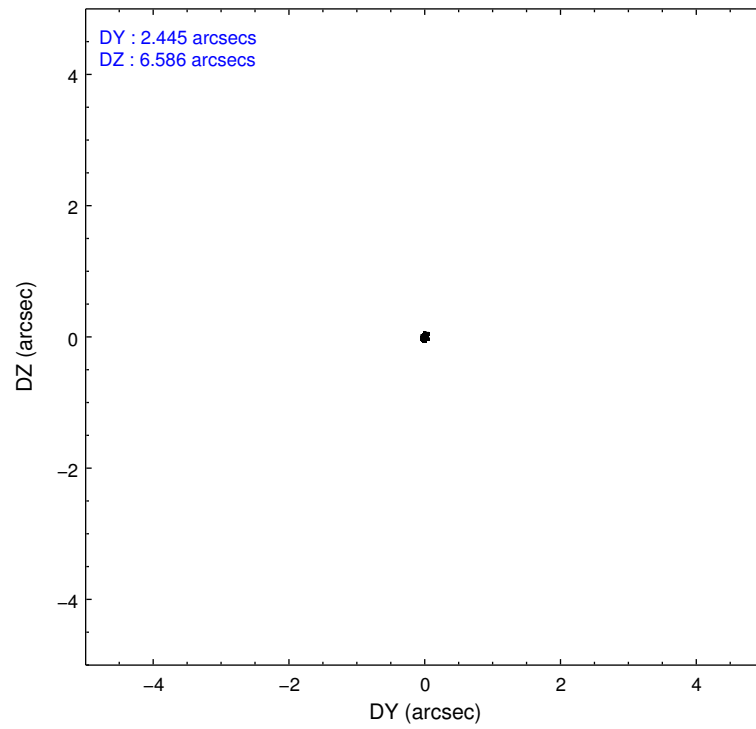
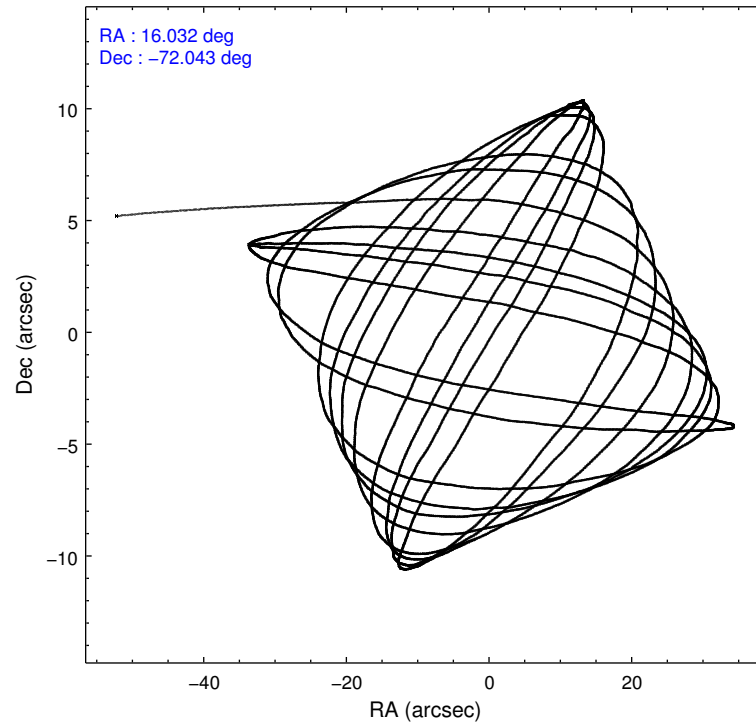
2.1.4 Events

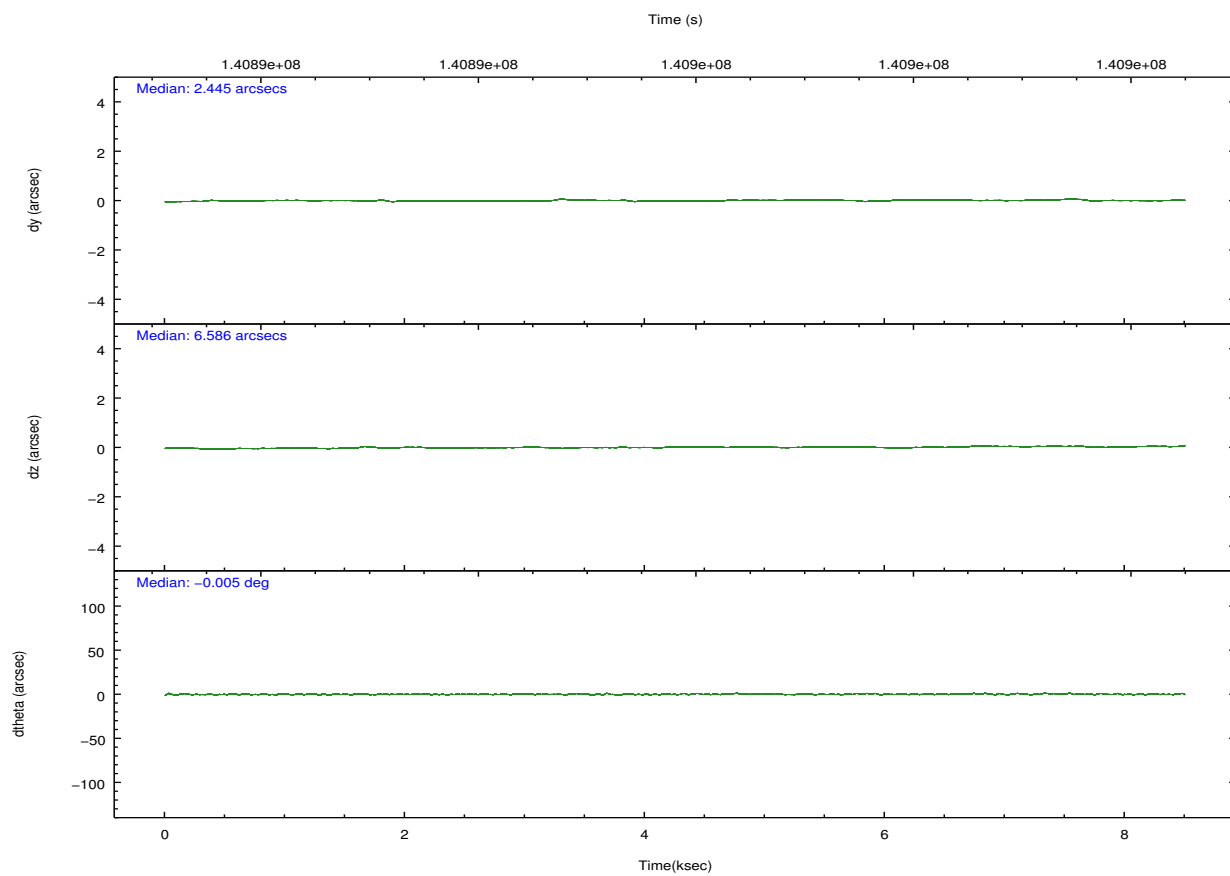
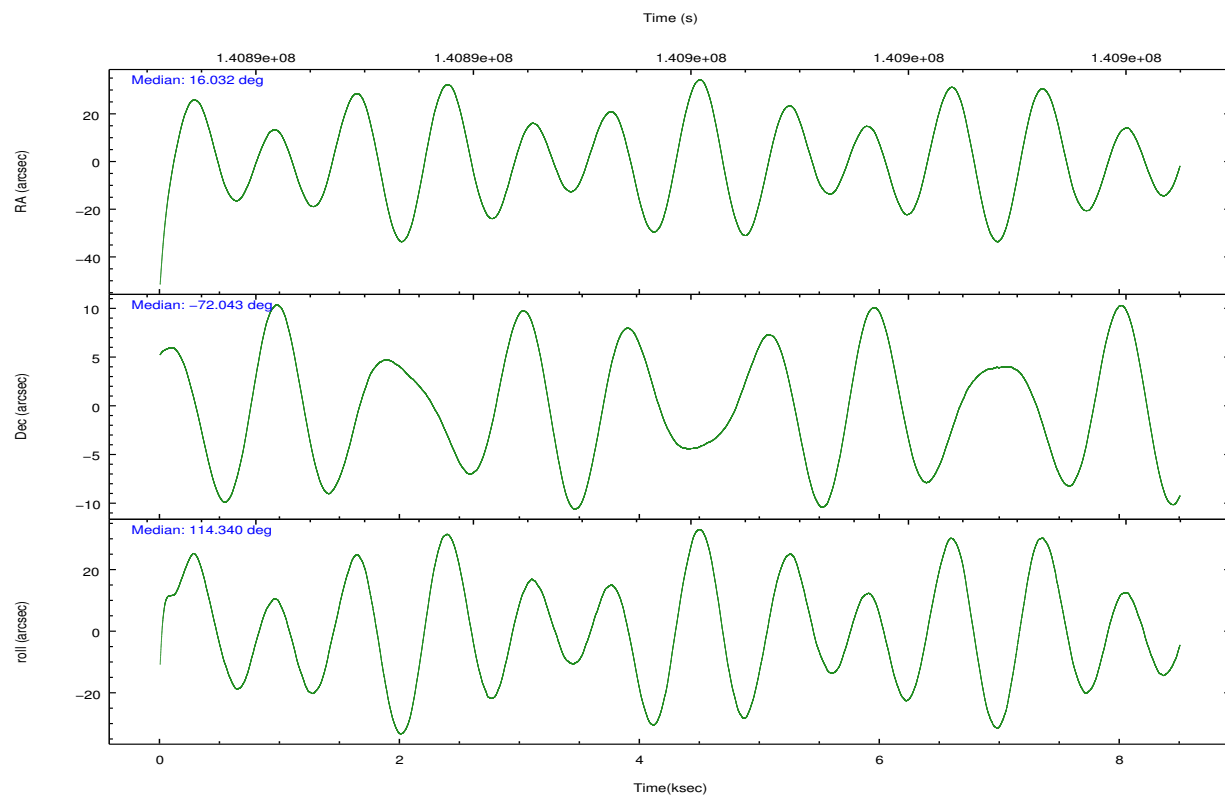
	ccd 2	ccd 3	ccd 5	ccd 6	ccd 7	ccd 8		ccd 2	ccd 3	ccd 5	ccd 6	ccd 7	ccd 8
level 1 events	52205	47308	75082	51697	127215	63464	grade 0 events	2376	2843	4709	2555	21213	4526
rejected events	46424	41251	40335	45588	39904	50564		4%	6%	6%	4%	16%	7%
rejected %	88%	87%	53%	88%	31%	79%	grade 1 events	21	25	133	20	458	33
								0%	0%	0%	0%	0%	0%
							grade 2 events	1306	1179	10180	1197	22496	2593
								2%	2%	13%	2%	17%	4%
							grade 3 events	508	527	1342	573	9834	1357
								0%	1%	1%	1%	7%	2%
							grade 4 events	550	547	1344	615	9824	1286
								1%	1%	1%	1%	7%	2%
							grade 5 events	1853	1977	5356	2258	7236	2702
								3%	4%	7%	4%	5%	4%
							grade 6 events	1043	966	17206	1174	24014	3155
								1%	2%	22%	2%	18%	4%
							grade 7 events	44548	39244	34812	43305	32140	47812
								85%	82%	46%	83%	25%	75%

2.2 Compared Parameters

Parameter	Planned	Actual	Parameter	Planned	Actual
Instrument	ACIS	ACIS	Obspar format version number	7	7
Detector	ACIS-235678	ACIS-235678	Obspar file type	PREDICTED	ACTUAL
Grating	NONE	NONE	Obspar update status	NONE	UPDATED
Data mode	FAINT	FAINT	Number of optional ACIS chips dropped	0	0
Observation mode	POINTING	POINTING	On-chip summing requested	N	N
[deg] Pointing RA	16.104264	16.03167691888102	Subarray requested	NONE	NONE
[deg] Pointing Dec	-72.058444	-72.04286273682833	Alternating exposures requested	N	N
[deg] Pointing Roll	114.262767	114.3503969305625	[s] Primary exposure time	0.000000	3.2
[s] Window start time (MET)	139276864.184000	139276864.184000			
[s] Window stop time (MET)	141782464.184000	141782464.184000			
[mm] SIM focus pos	-0.684267	-0.6828225247311905			
[mm] SIM defocus	0	0.001444936568705701			
[mm] SIM translation stage pos	-190.132523	-190.1400660498719			
[mm] SIM translation stage offset	0	0.00754346686406393			
[s] Observation start time (MET)	140892158.184000	140890991.1189			
Observation start date	2002-06-19T16:41:34	2002-06-19T16:23:11			
[s] Observation end time (MET)	140900058.184000	140900192.54428			
Observation end date	2002-06-19T18:53:14	2002-06-19T18:56:32			
Read mode	TIMED	TIMED			

2.3 Aspect



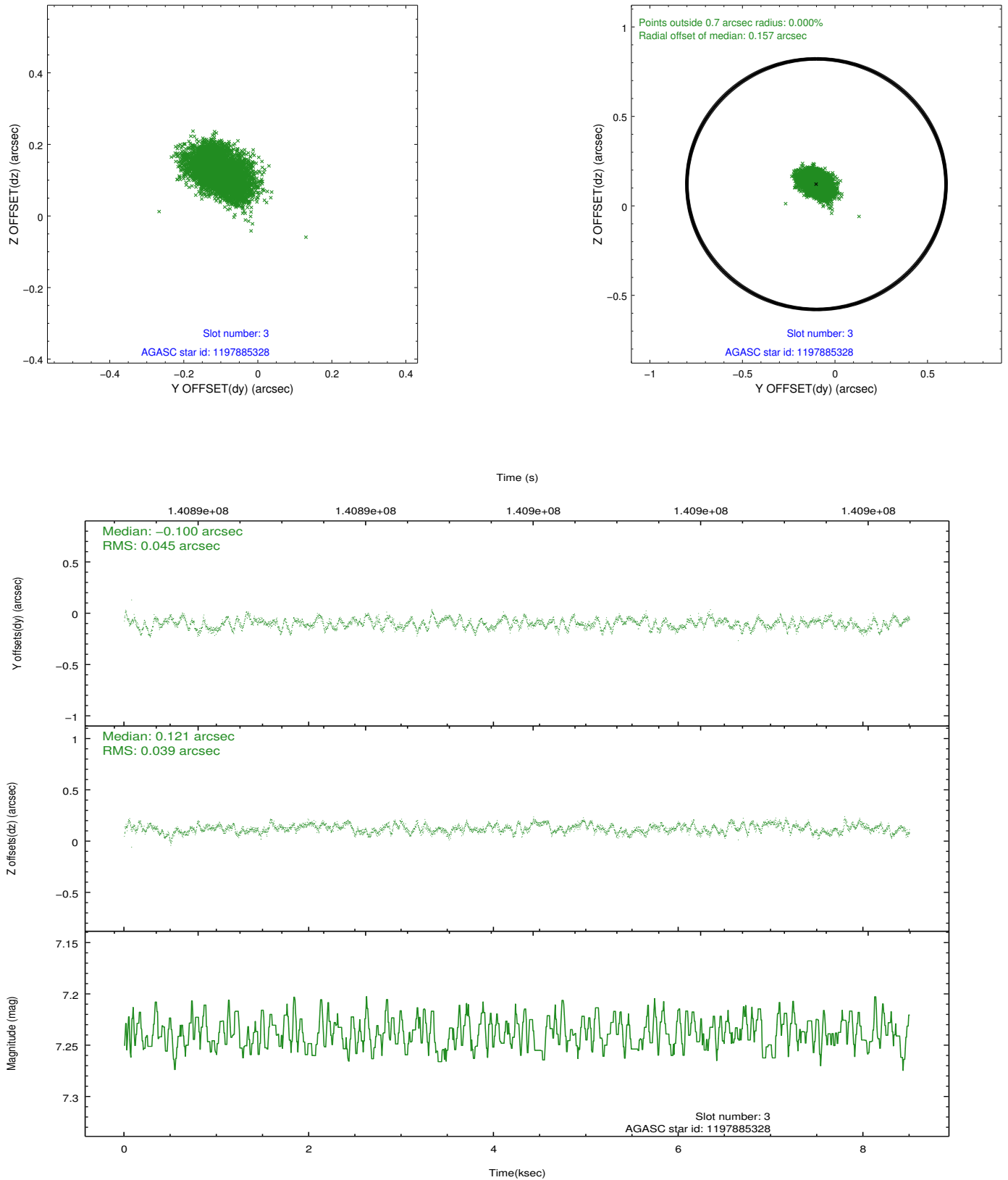


Slot Statistics

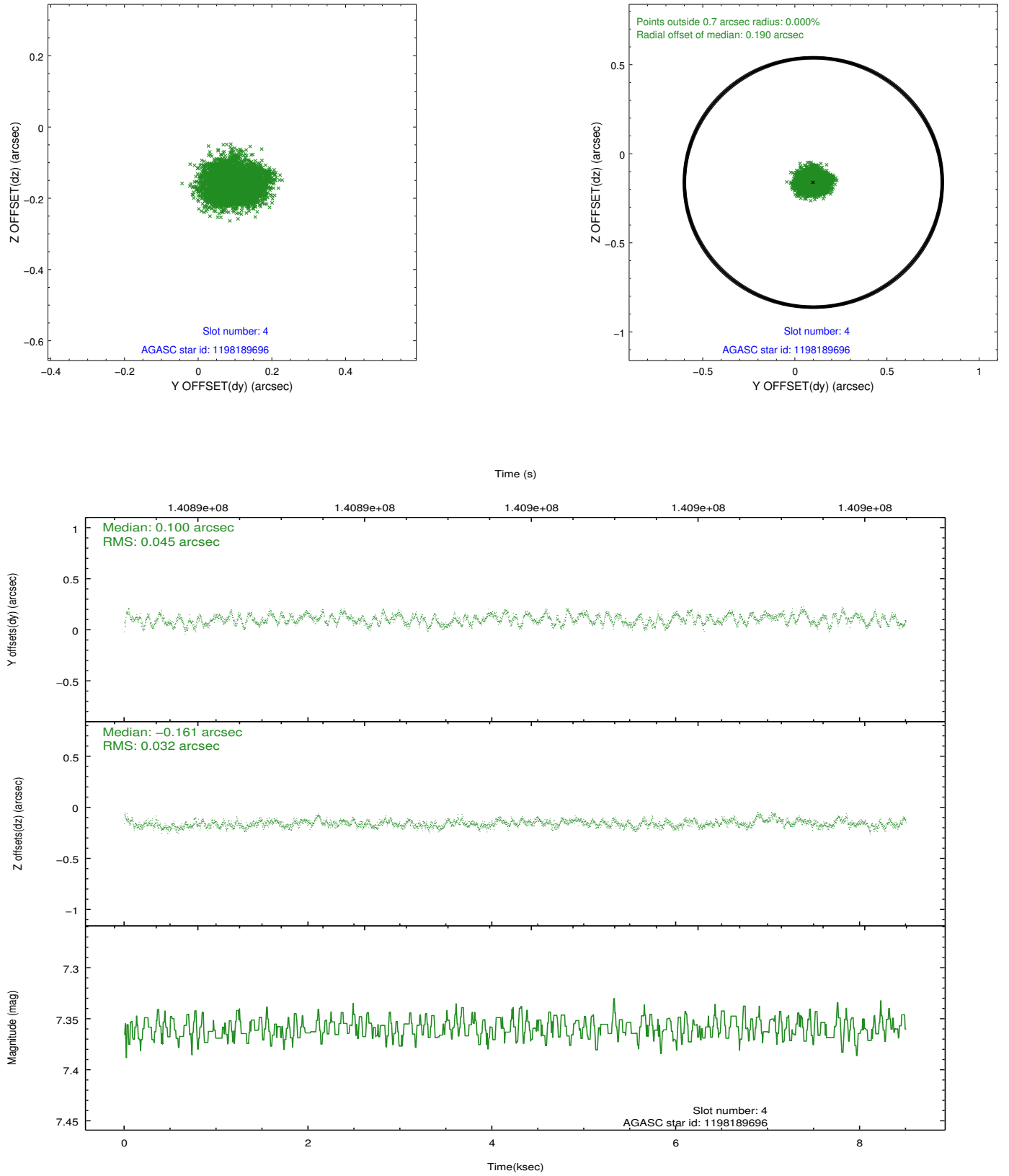
slot	status	id	mag	n_pts	med_dy	med_dz	dr1	dr2	ra	dec	mean_y	mean_z
0	FID	ACIS-S-1	7.18	2073	0.015	-0.042	0.006	0.011	0.000000	0.000000	940.98	-1723.41
1	FID	ACIS-S-5	7.25	2073	0.002	0.020	0.006	0.010	0.000000	0.000000	-1807.66	173.54
2	FID	ACIS-S-6	7.35	2074	-0.038	0.034	0.007	0.011	0.000000	0.000000	405.78	818.25
3	GUIDE	1197885328	7.24	4147	-0.100	0.121	0.065	0.101	16.283090	-71.733943	982.30	-663.93
4	GUIDE	1198189696	7.36	4147	0.100	-0.161	0.060	0.092	15.223750	-72.697522	-1716.00	1807.02
5	GUIDE	1197884536	8.49	4147	-0.014	0.064	0.066	0.110	17.160729	-71.835289	236.01	-1406.27
6	GUIDE	1197878768	9.62	4145	-0.022	0.036	0.115	0.191	16.656786	-71.304581	2210.45	-1695.40
7	GUIDE	1197749416	10.26	4142	0.034	-0.060	0.149	0.242	13.610513	-71.871242	1709.93	2292.36

2.4 Star Slots

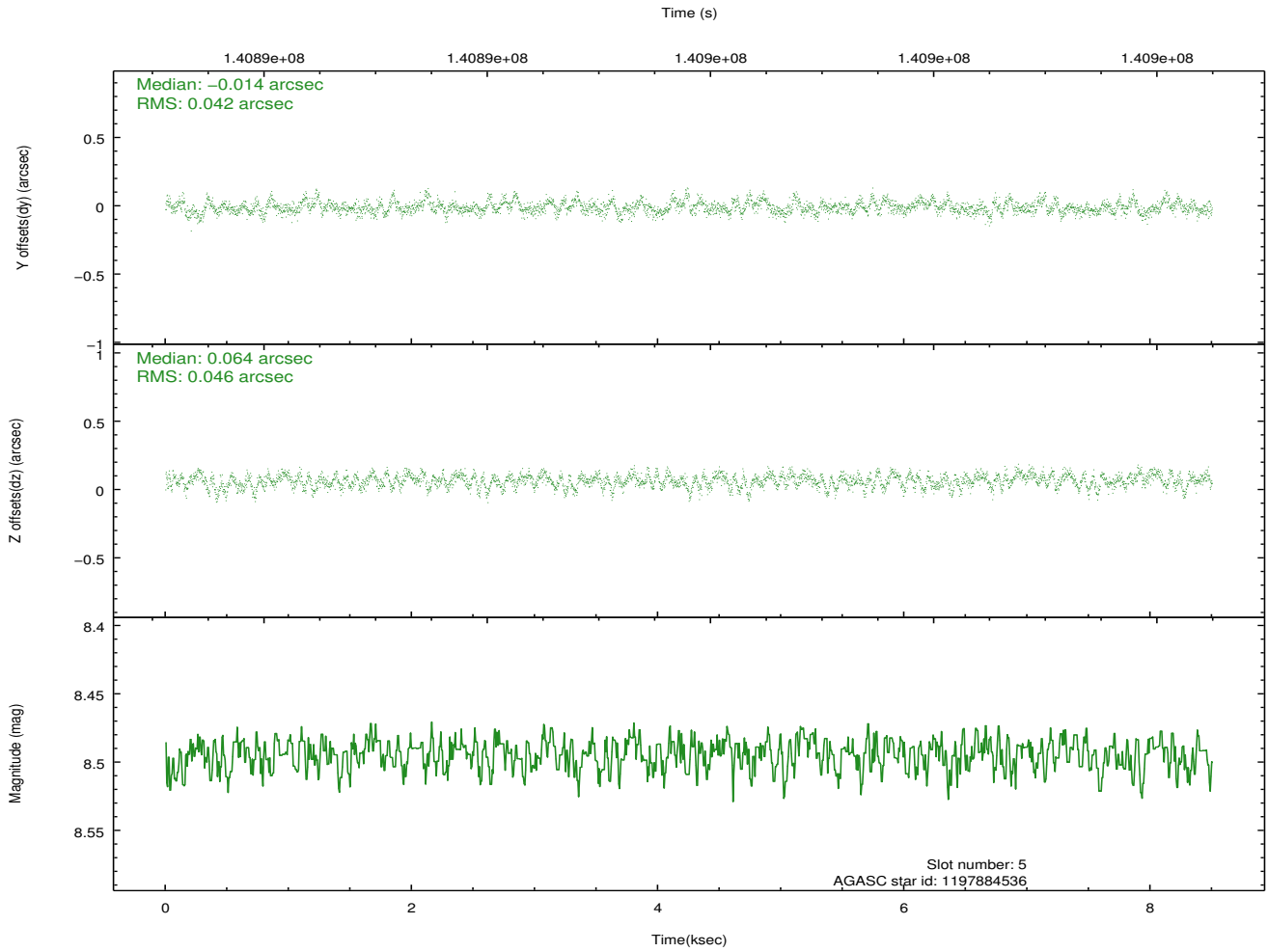
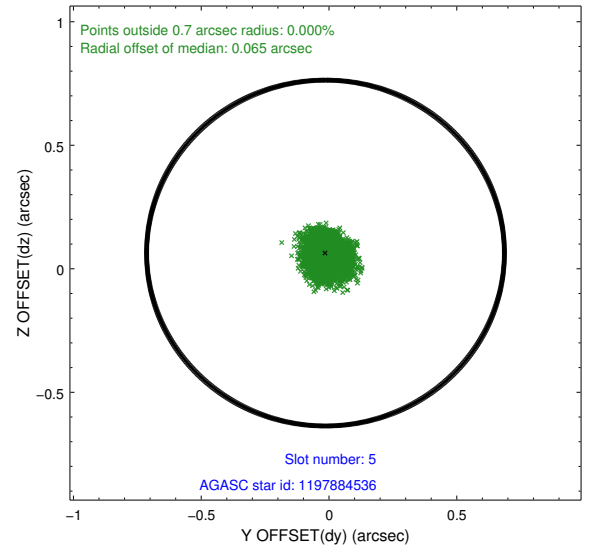
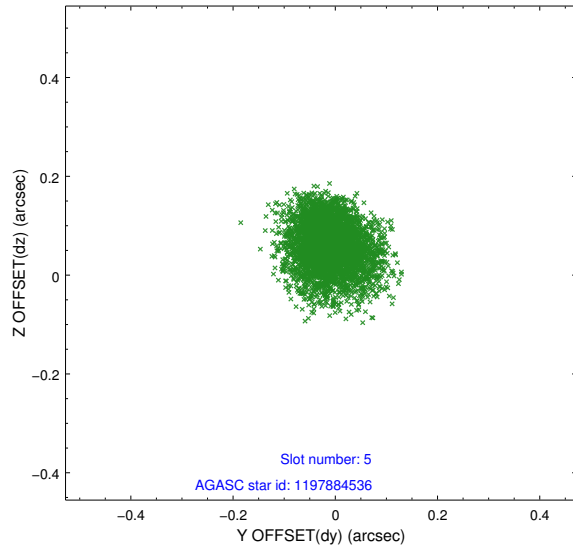
2.4.1 Slot 3



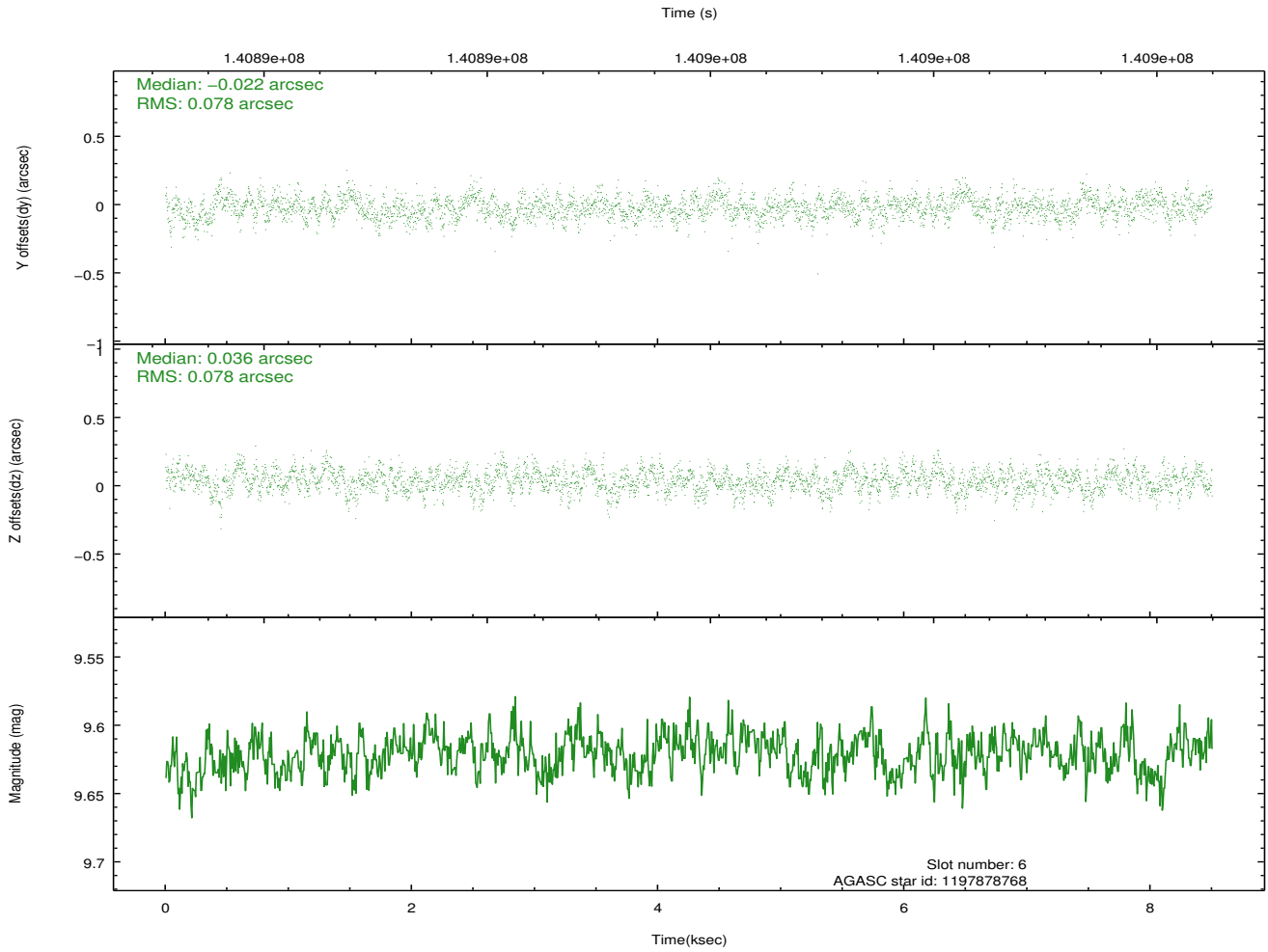
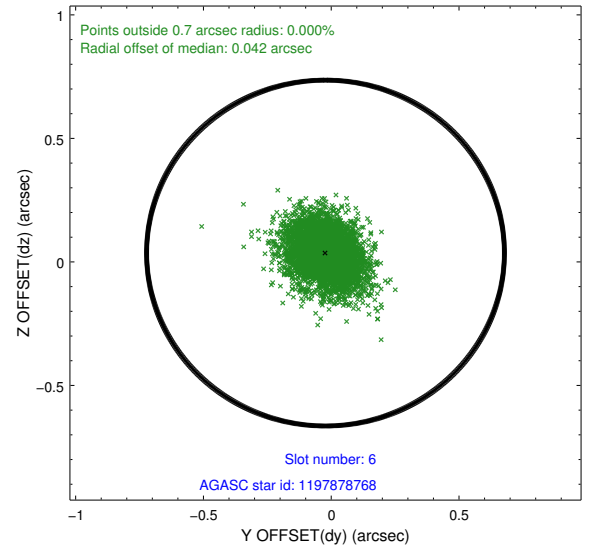
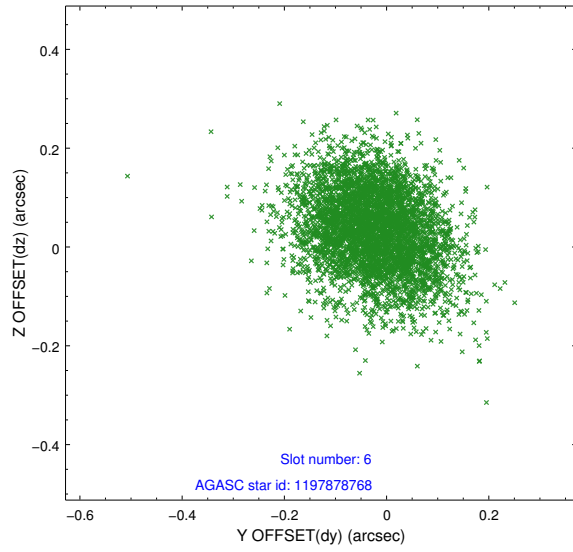
2.4.2 Slot 4



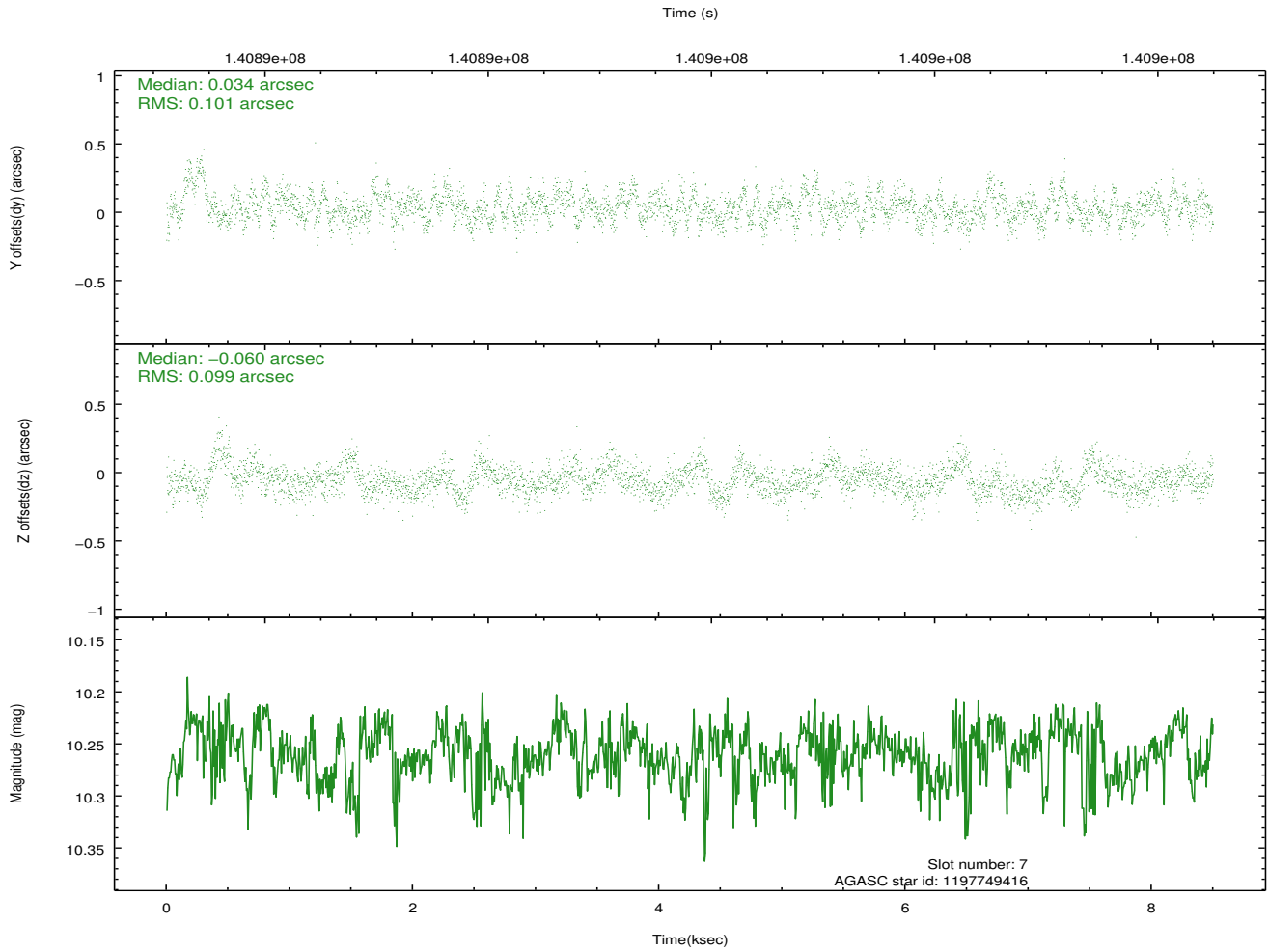
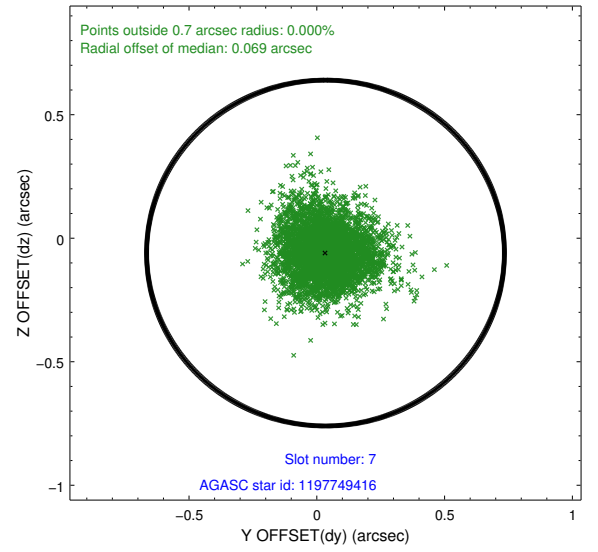
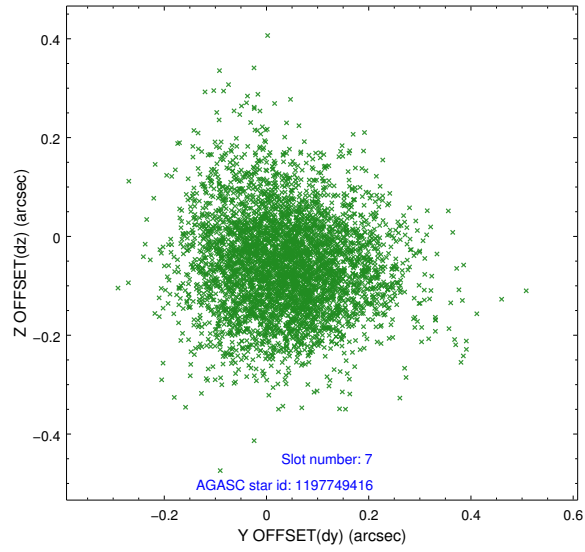
2.4.3 Slot 5



2.4.4 Slot 6

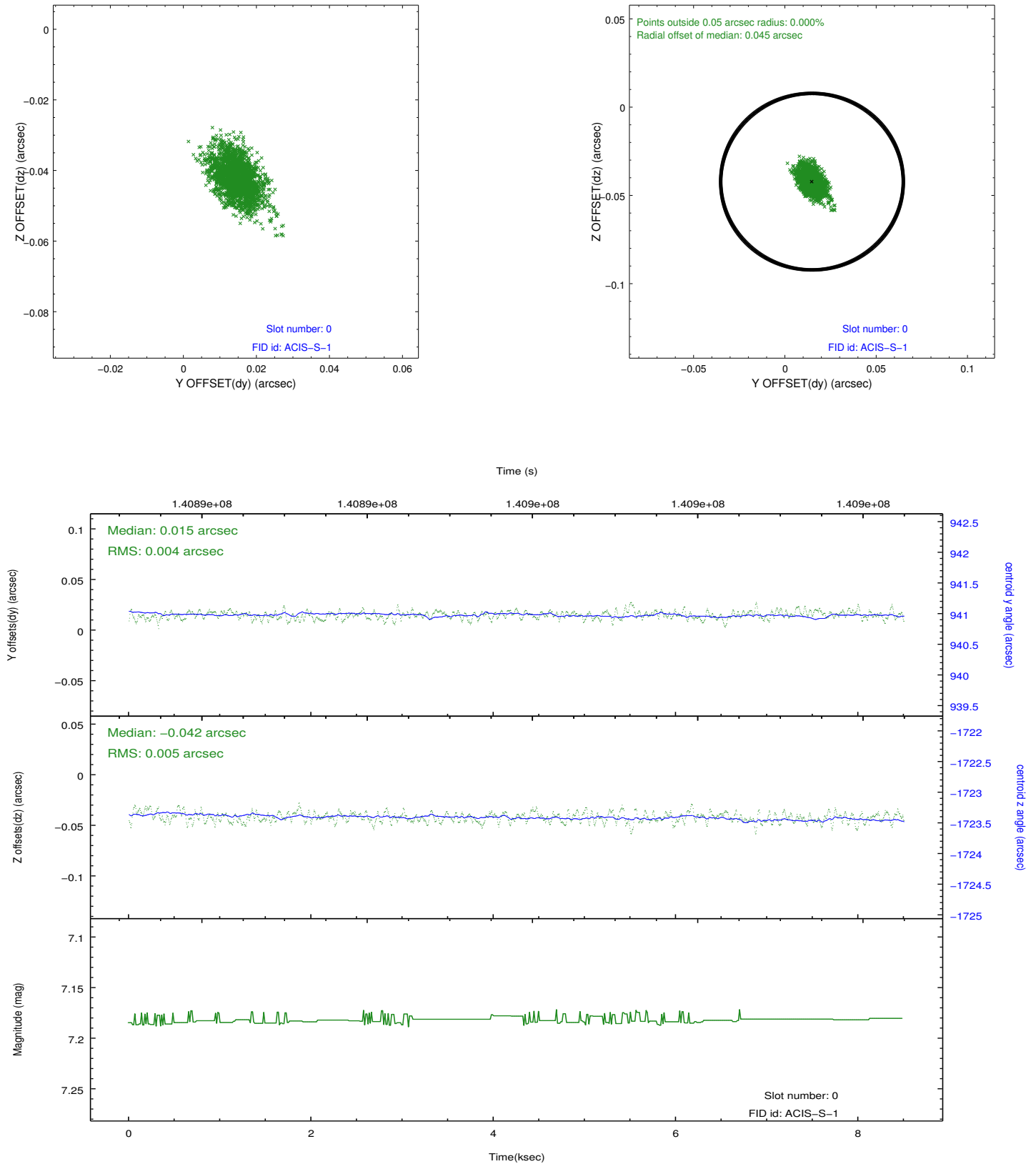


2.4.5 Slot 7

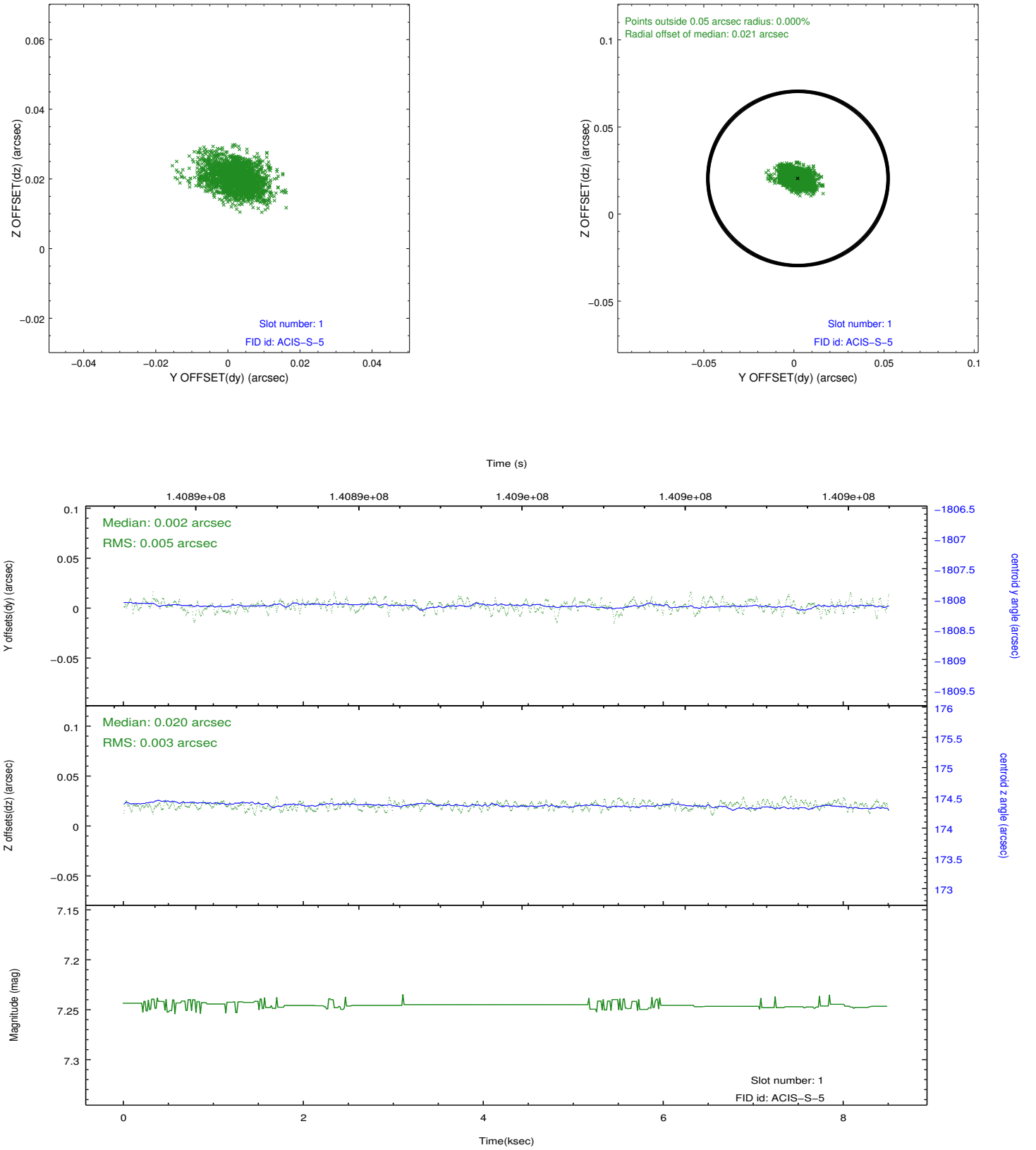


2.5 FID Slots

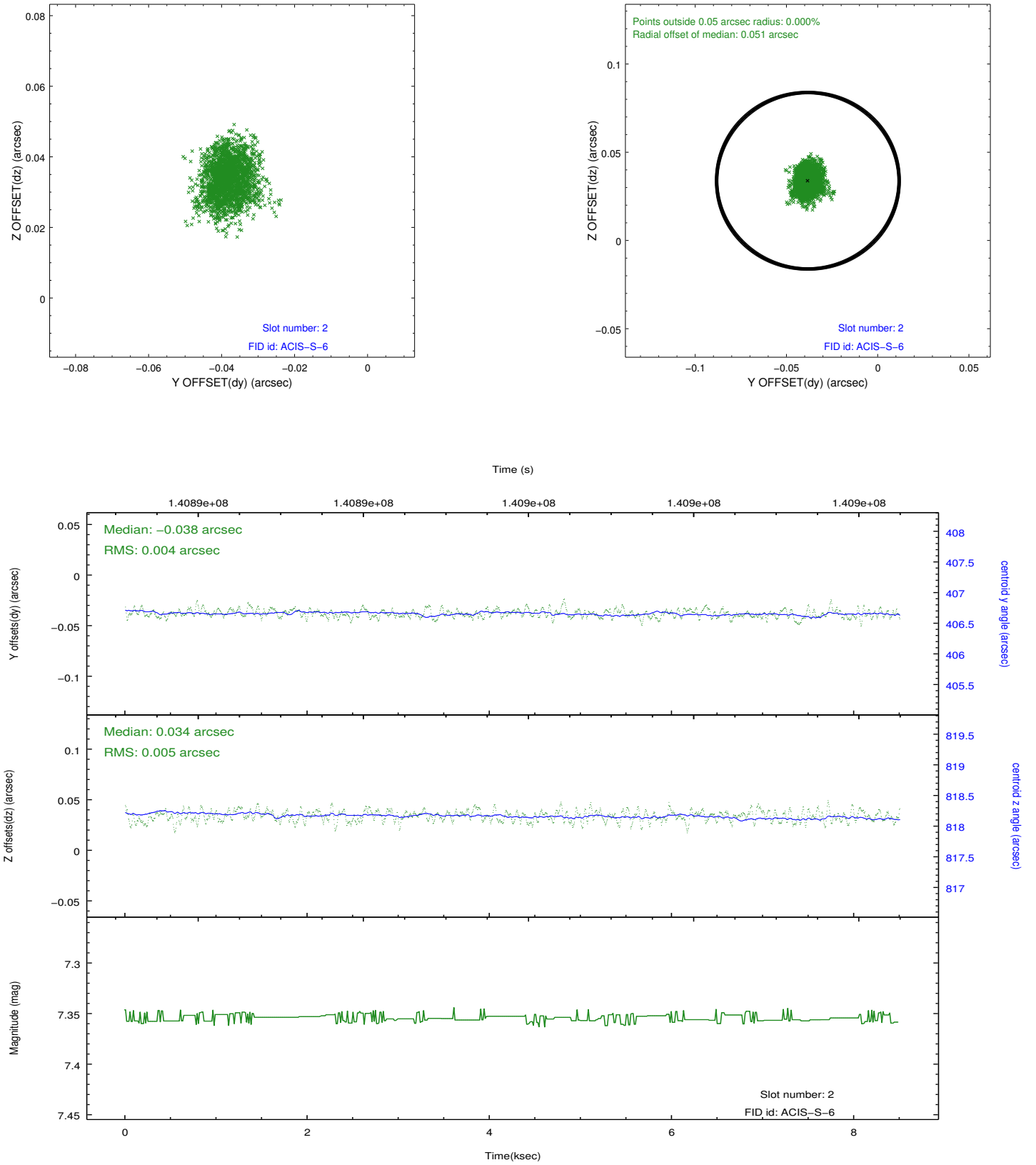
2.5.1 Slot 0



2.5.2 Slot 1



2.5.3 Slot 2



A Summary

A.1 Status

V&V Scientist	Jen Lauer
V&V Date (YYYY-MM-DD)	2012.10.19
V&V Edition	1
V&V Disposition and Status	OK
V&V Charge Time	7.862

A.2 Comments

Window constraint met.