

# V&V Reference Report

## L2 ASCDS Version : 7.6.10

Observation 2845 - L2 Version 001  
Chandra X-Ray Center

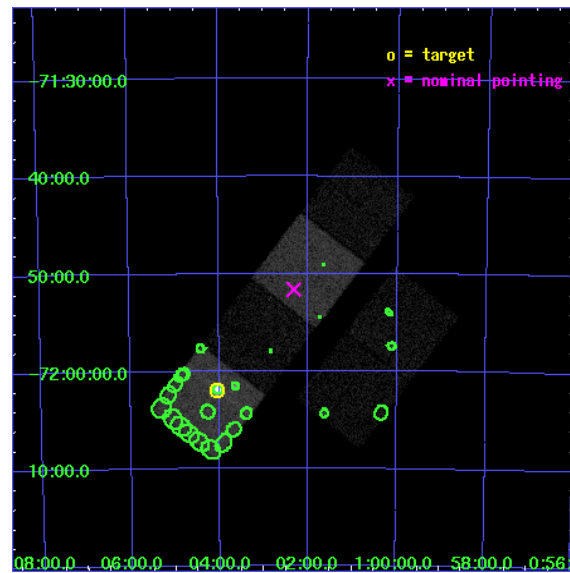
L2 Processing Date : Jan 21 2007

## Contents

<b>1</b>	<b>Front</b>	<b>2</b>
<b>2</b>	<b>OBI</b>	<b>3</b>
2.1	OBI . . . . .	3
2.1.1	Images . . . . .	3
2.1.2	Bias . . . . .	3
2.1.3	Parameters . . . . .	4
2.1.4	Events . . . . .	4
2.2	Compared Parameters . . . . .	5
2.3	Aspect . . . . .	6
2.4	Star Slots . . . . .	9
2.4.1	Slot 3 . . . . .	9
2.4.2	Slot 4 . . . . .	10
2.4.3	Slot 5 . . . . .	11
2.4.4	Slot 6 . . . . .	12
2.4.5	Slot 7 . . . . .	13
2.5	FID Slots . . . . .	14
2.5.1	Slot 0 . . . . .	14
2.5.2	Slot 1 . . . . .	15
2.5.3	Slot 2 . . . . .	16
<b>3</b>	<b>Point Sources</b>	<b>17</b>
<b>A</b>	<b>Summary</b>	<b>18</b>
A.1	Status . . . . .	18
A.2	Comments . . . . .	18

# 1 Front

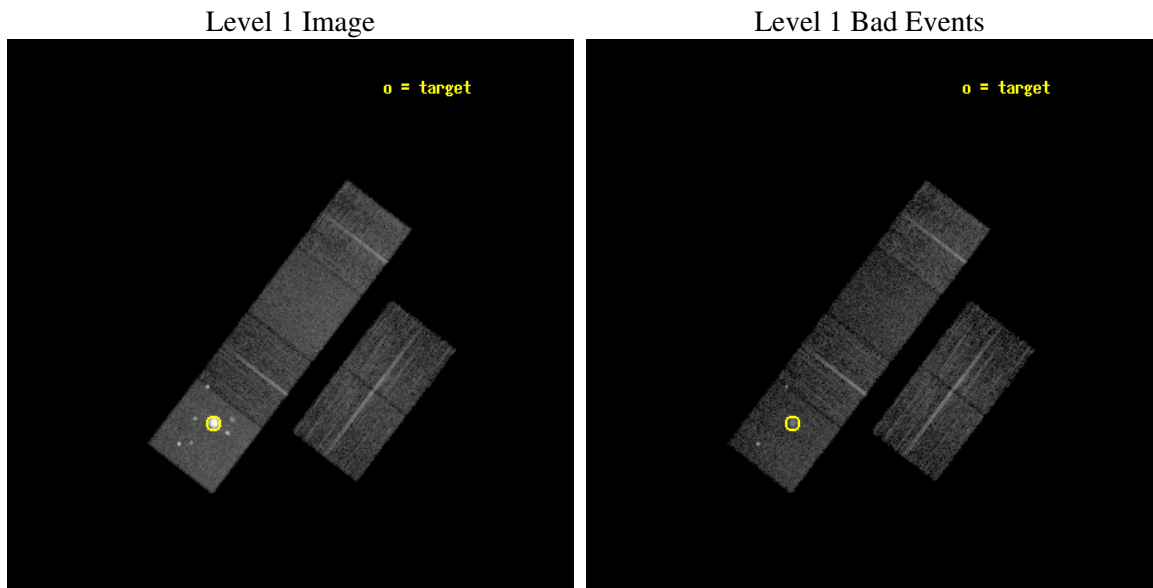
seq_num	590234
obs_id	2845
title	AO3A ACIS-S CALIBRATION OBSERVATIONS OF E0102-72
observer	Dr. CXC Calibration
object	E0102-72.3 [Chip S1, T=120, Offsets=13,0,0]
dtcycle	0
cycle	P
ra_targ	16.01
dec_targ	-72.032028
ra_nom	15.579317112508
dec_nom	-71.860380513203
roll_nom	307.38042342558
revision	2
ontime	7558.4000070393
livetime	7462.6909950281
ontime2	7558.4000070393
ontime3	7558.4000070393
ontime5	7558.4000070393
ontime6	7558.4000070393
ontime7	7558.4000070393
ontime8	7555.1591763794
l2events	125876



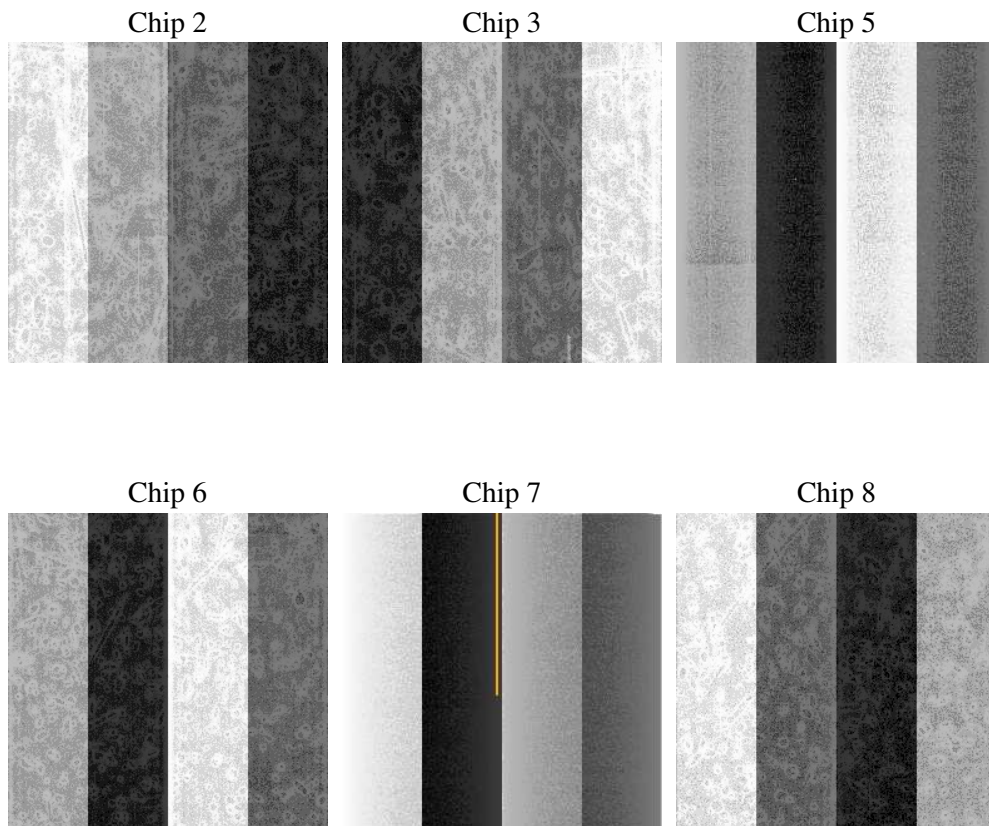
## 2 OBI

### 2.1 OBI

#### 2.1.1 Images



#### 2.1.2 Bias



### 2.1.3 Parameters

obi_num	1
ascdsver	7.6.10
caldsver	3.3.0
date	2007-01-20T13:18:20
revision	2

sched_exp_time	7800.000000
ontime	7558.4000070393
ontime2	7558.4000070393
ontime3	7558.4000070393
ontime5	7558.4000070393
ontime6	7558.4000070393
ontime7	7558.4000070393
ontime8	7555.1591763794
l1events	394370

### 2.1.4 Events

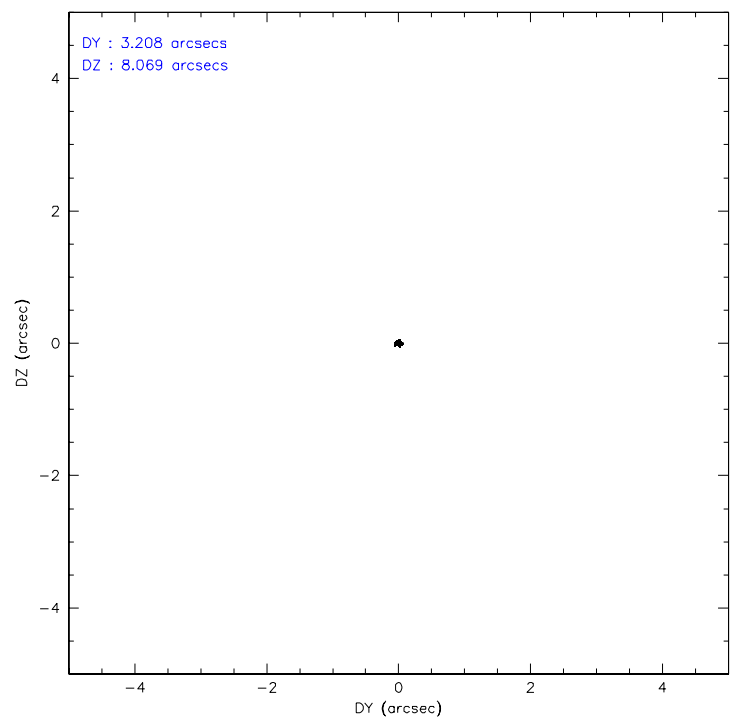
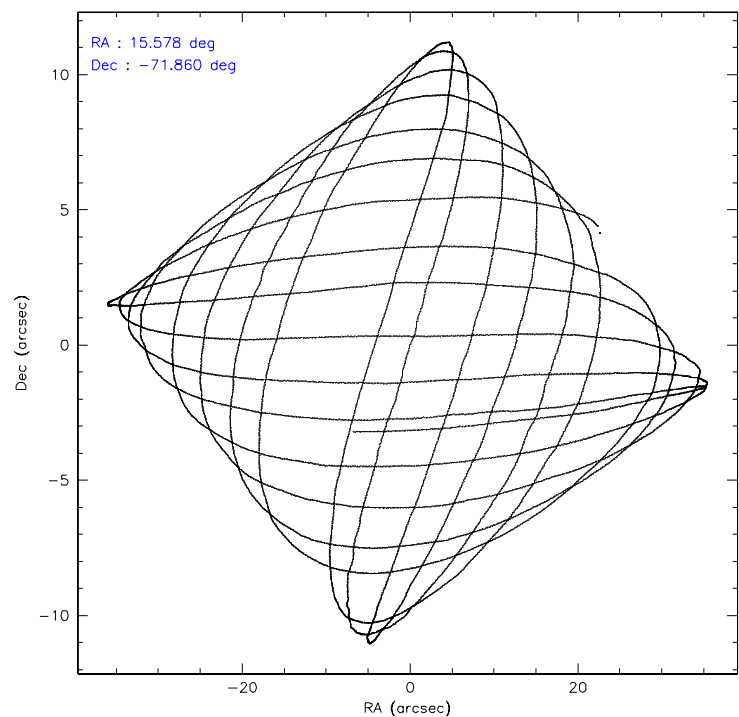
	ccd 2	ccd 3	ccd 5	ccd 6	ccd 7	ccd 8
level 1 events	49285	46944	124605	48056	63207	62273
rejected events	43669	41283	38969	42191	36091	50079
rejected %	88%	87%	31%	87%	57%	80%

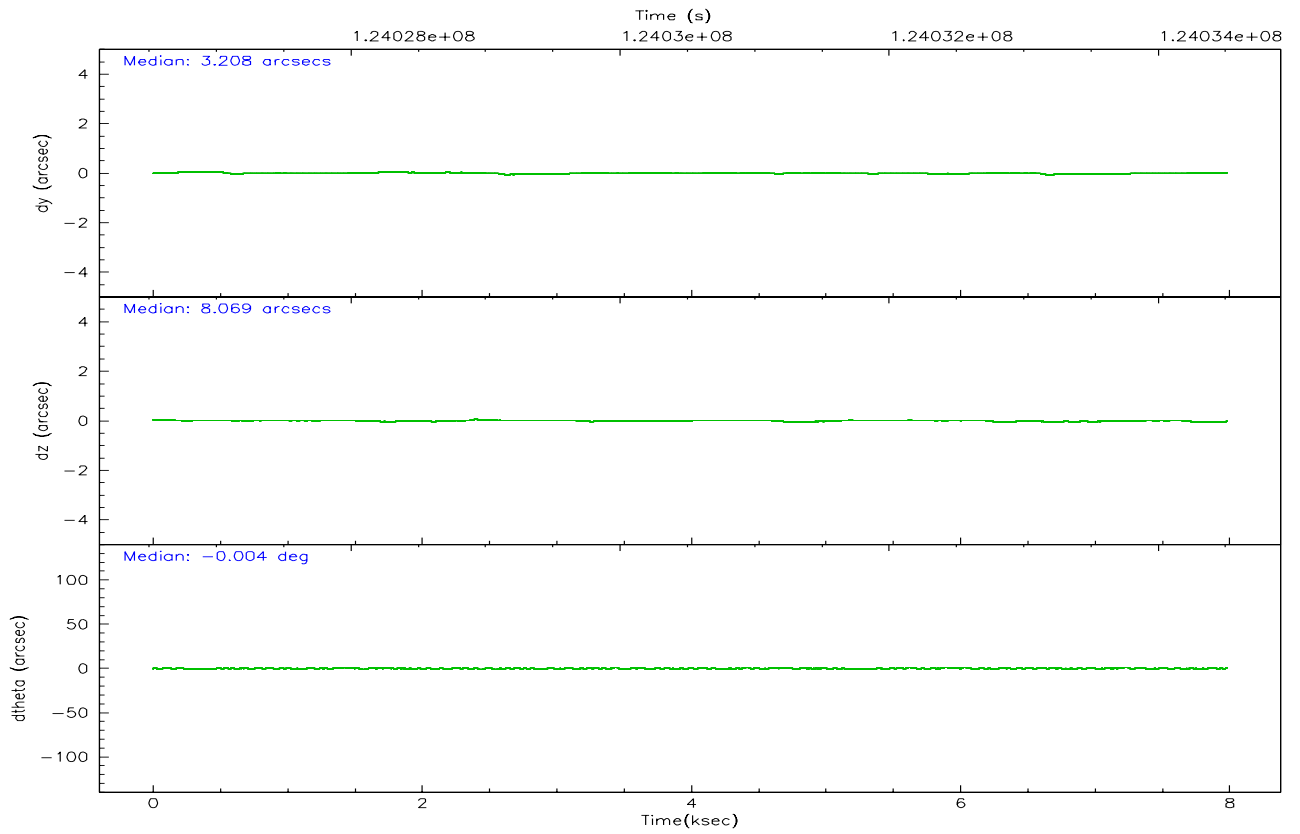
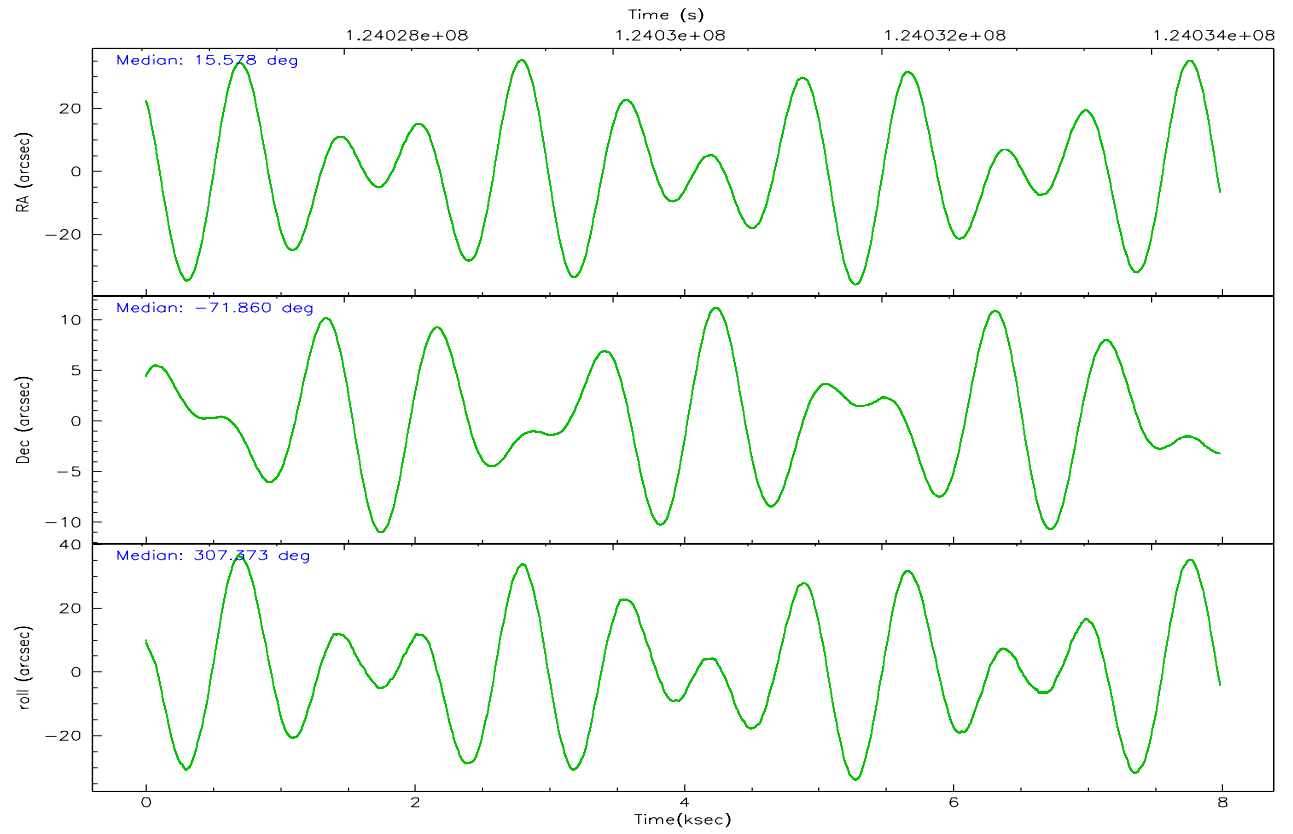
	ccd 2	ccd 3	ccd 5	ccd 6	ccd 7	ccd 8
grade 0 events	2530	2474	29640	2474	2767	3875
	5%	5%	23%	5%	4%	6%
grade 1 events	22	24	328	23	48	42
	0%	0%	0%	0%	0%	0%
grade 2 events	1146	1144	23530	1162	5400	2667
	2%	2%	18%	2%	8%	4%
grade 3 events	529	528	5831	566	2373	1196
	1%	1%	4%	1%	3%	1%
grade 4 events	506	525	5856	553	2378	1187
	1%	1%	4%	1%	3%	1%
grade 5 events	1582	1815	6086	2065	5947	2569
	3%	3%	4%	4%	9%	4%
grade 6 events	912	992	20848	1117	14215	3273
	1%	2%	16%	2%	22%	5%
grade 7 events	42058	39442	32486	40096	30079	47464
	85%	84%	26%	83%	47%	76%

## 2.2 Compared Parameters

Parameter	Planned	Actual	Parameter	Planned	Actual
Instrument	ACIS	ACIS	Obspar format version number	6	6
Detector	ACIS-235678	ACIS-235678	Obspar file type	PREDICTED	ACTUAL
Grating	NONE	NONE	Obspar update status	NONE	UPDATED
Data mode	FAINT	FAINT	Number of optional ACIS chips dropped	0	0
Observation mode	POINTING	POINTING	On-chip summing requested	N	N
Pointing RA	15.498095	15.57931711250766	Subarray requested	NONE	NONE
Pointing Dec	-71.850193	-71.86038051320322	Alternating exposures requested	N	N
Pointing Roll	307.146620	307.3804234255755	Primary exposure time	0.000000	3.2
Window start time	123552064.184000	123552064.184000			
Window stop time	126144064.184000	126144064.184000			
SIM focus pos (mm)	-0.684267	-0.6828225247311905			
SIM defocus (mm)	0	0.001444936568705701			
SIM translation stage pos (mm)	-190.132523	-190.1425803651734			
SIM translation stage offset (mm)	0	0.01005778216563158			
Observation start time	124026709.184000	124026332.82351			
Observation start date	2001-12-06T11:50:45	2001-12-06T11:45:32			
Observation end time	124034509.184000	124035266.21137			
Observation end date	2001-12-06T14:00:45	2001-12-06T14:14:26			
Read mode	TIMED	TIMED			

## 2.3 Aspect





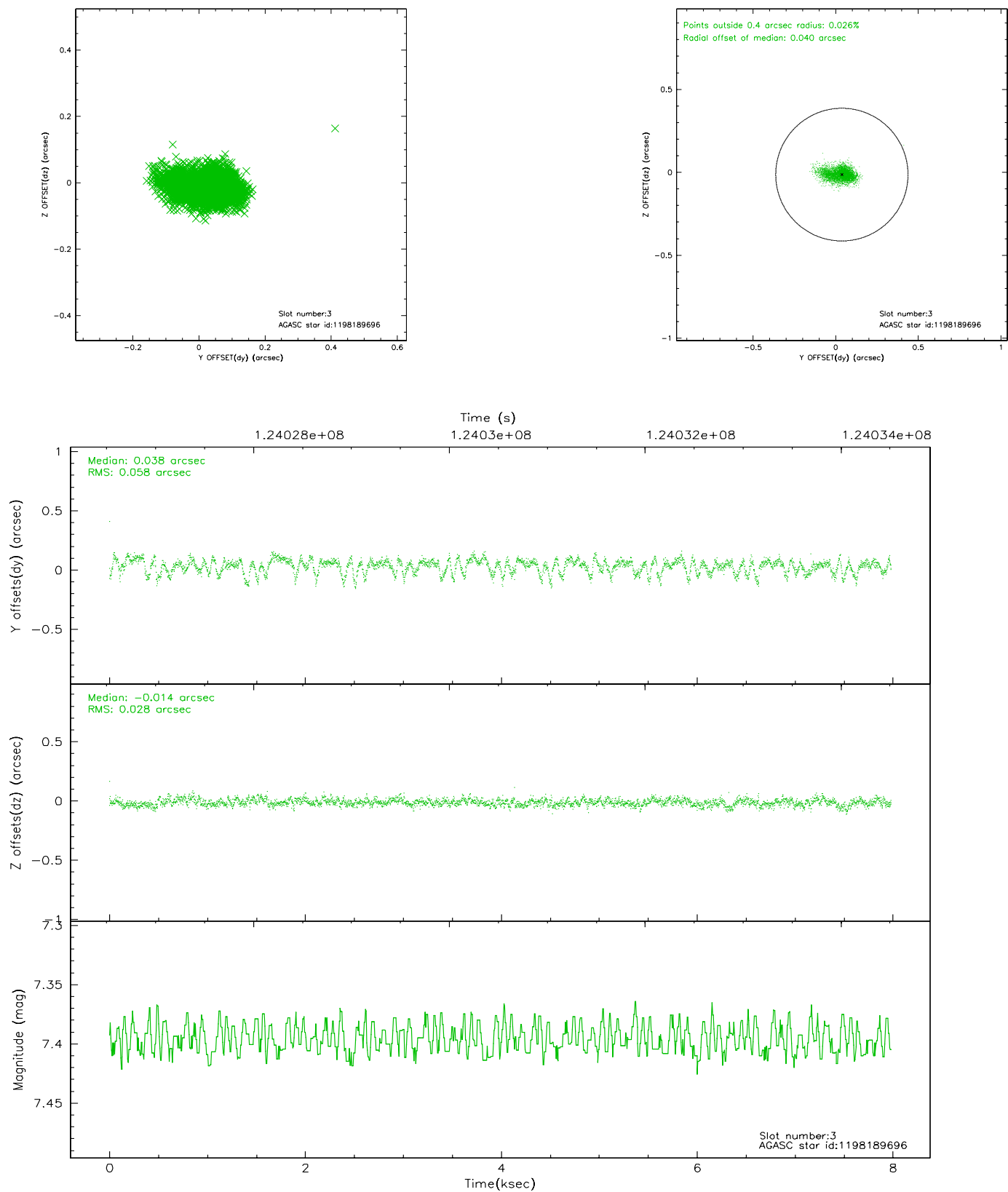
### Slot Statistics

slot	status	id	mag	n_pts	med_dy	med_dz	dr1	dr2	ra	dec	mean_y	mean_z
0	FID	ACIS-S-2	7.11	1947	0.009	0.021	0.006	0.010	0.000000	0.000000	-755.86	-1729.18
1	FID	ACIS-S-4	7.20	1947	-0.075	-0.010	0.005	0.009	0.000000	0.000000	2157.03	178.52
2	FID	ACIS-S-5	7.24	1947	0.035	-0.003	0.006	0.010	0.000000	0.000000	-1807.75	173.03
3	GUIDE	1198189696	7.40	3895	0.038	-0.014	0.064	0.120	15.223750	-72.697522	2255.57	-2075.46
4	GUIDE	1197750936	7.55	3895	-0.068	-0.015	0.052	0.081	15.387940	-71.549550	-937.29	553.67
5	GUIDE	1197884536	8.49	3891	0.013	0.069	0.068	0.107	17.160729	-71.835289	1104.58	1505.29
6	GUIDE	1197878768	9.63	3893	0.050	-0.018	0.107	0.171	16.656786	-71.304581	-747.48	2245.34
7	GUIDE	1197750160	10.25	3891	-0.028	-0.016	0.150	0.245	12.997994	-71.773722	-1871.78	-2111.04

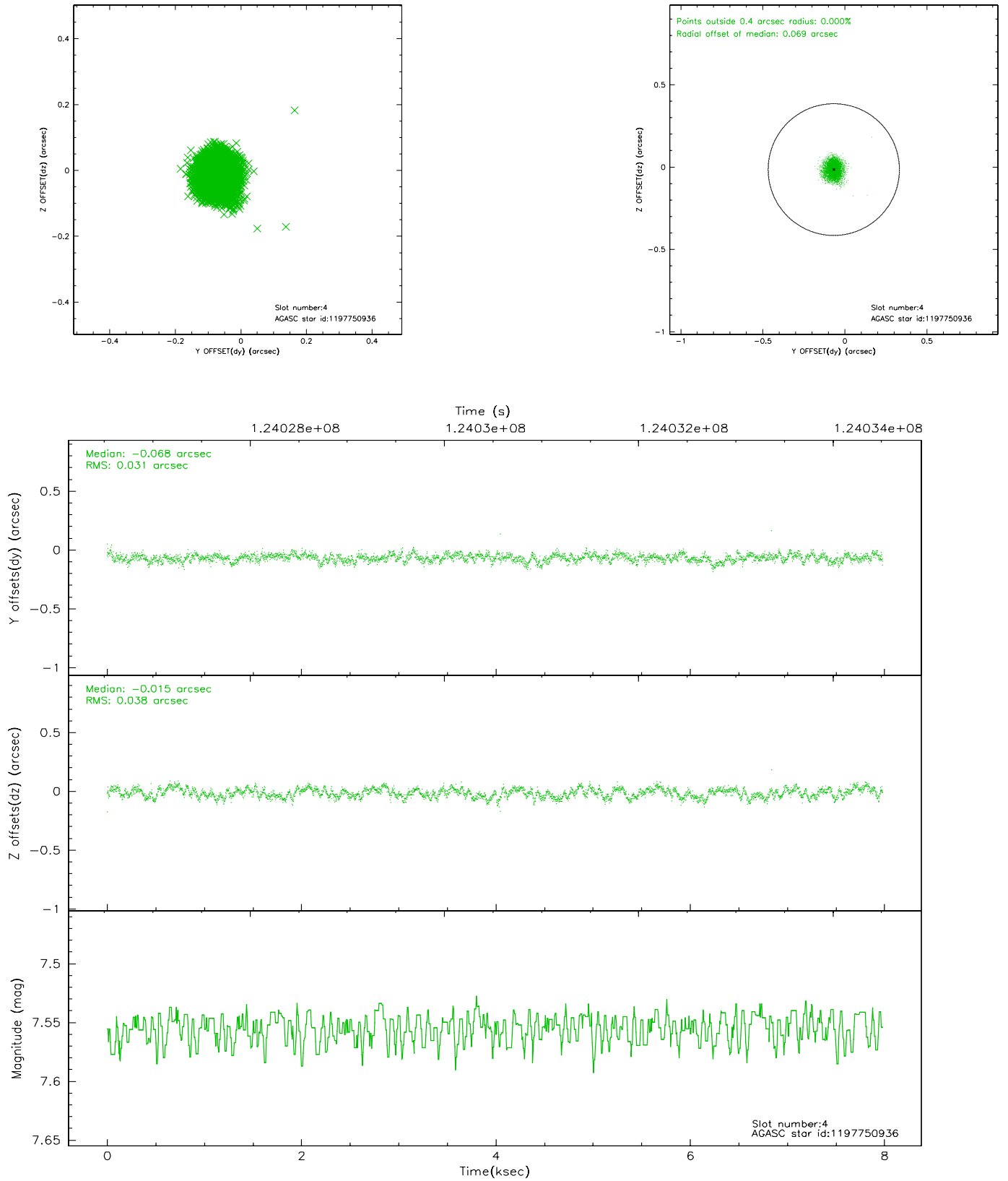


## 2.4 Star Slots

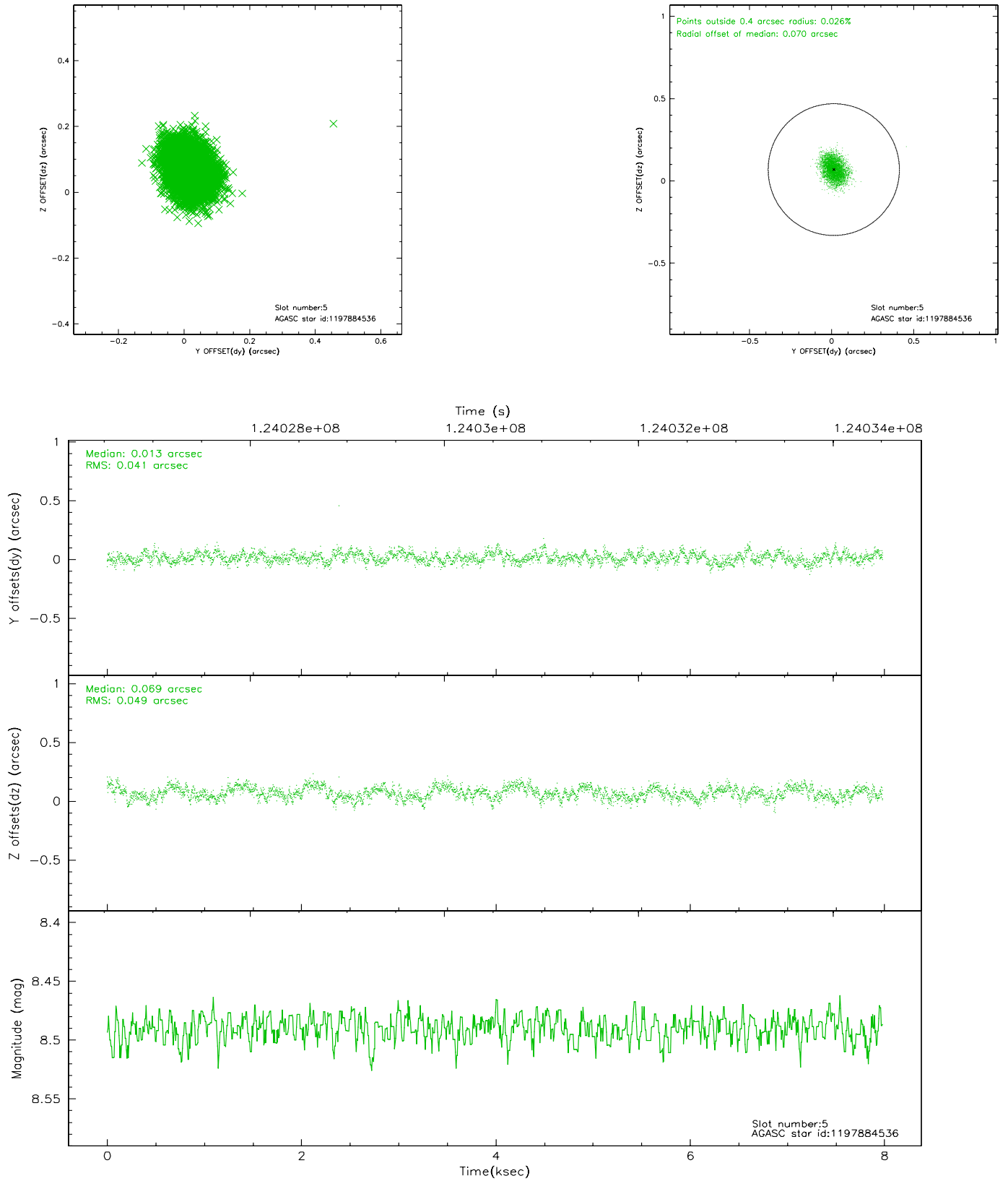
### 2.4.1 Slot 3



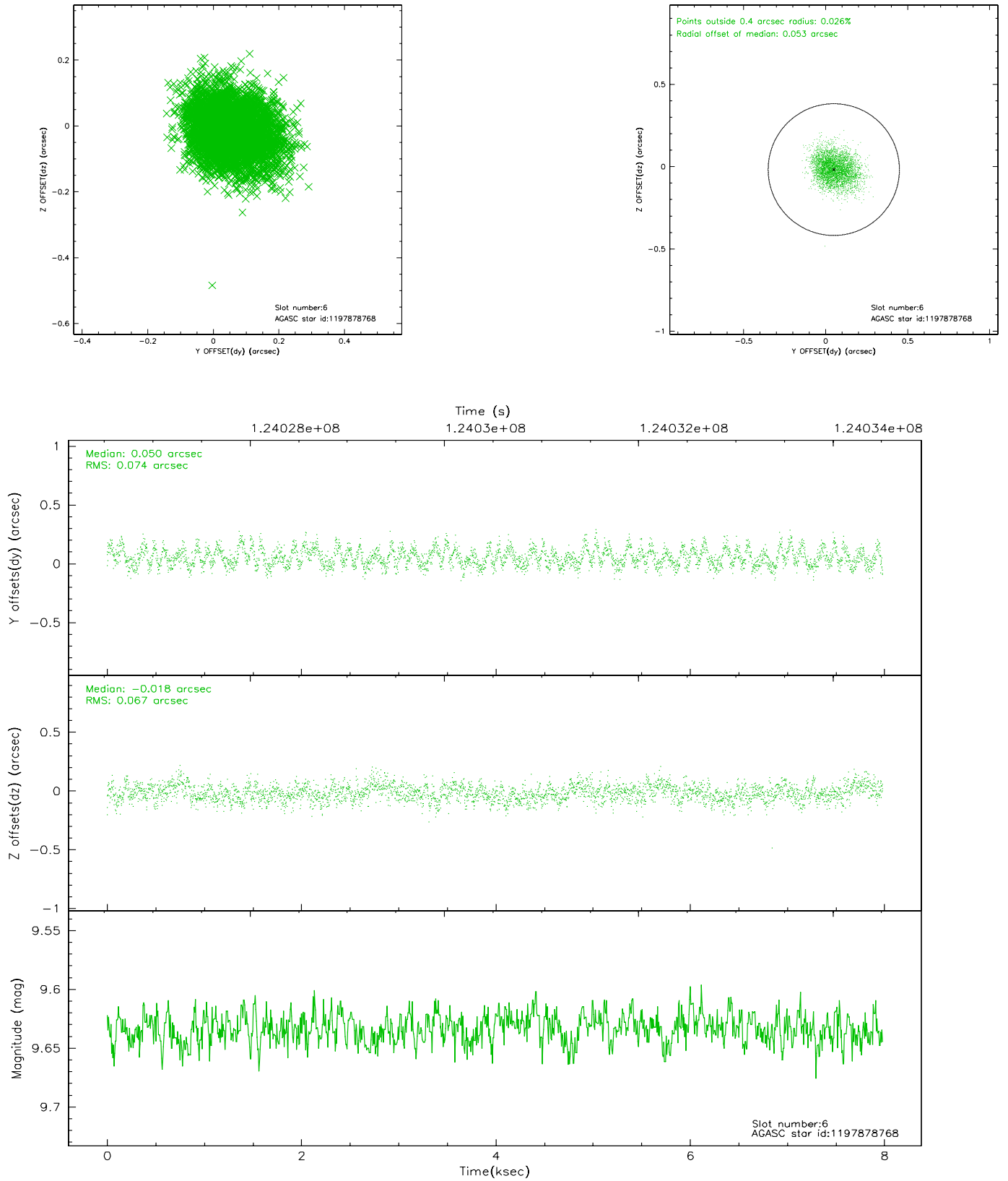
## 2.4.2 Slot 4



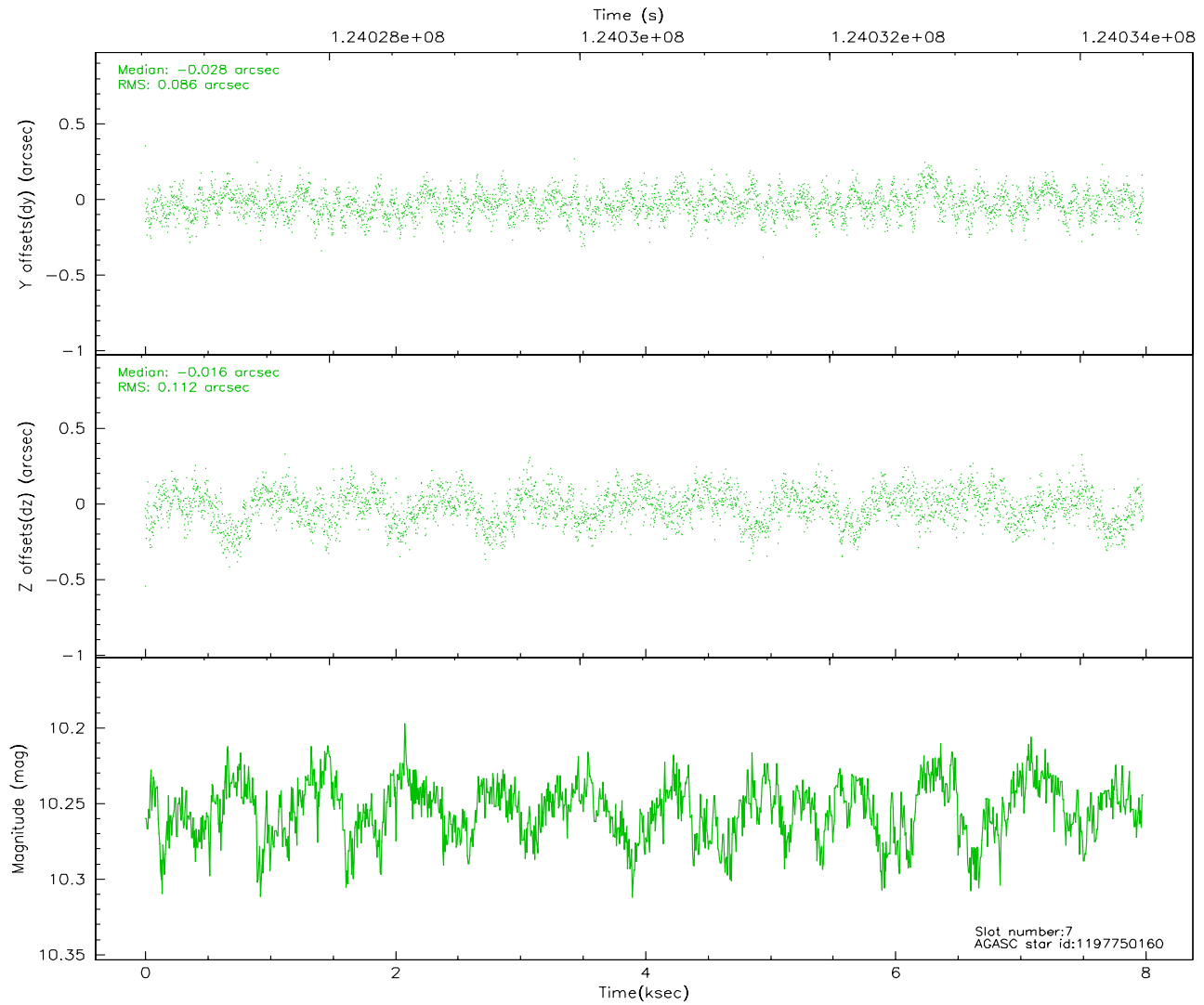
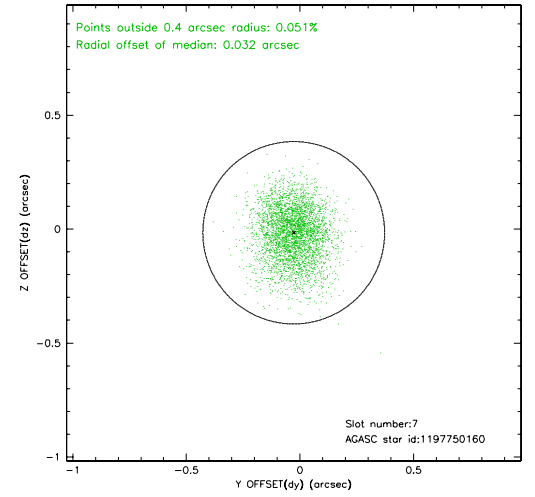
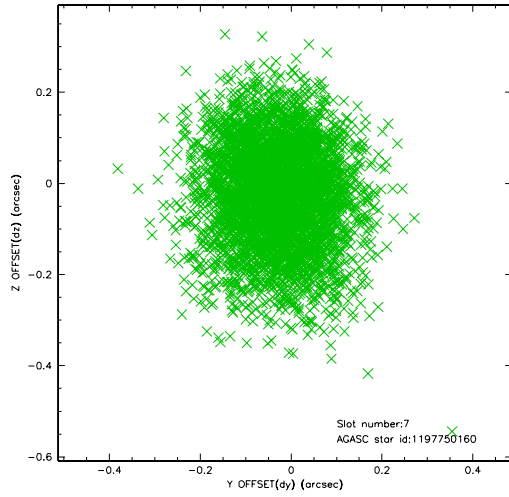
### 2.4.3 Slot 5



## 2.4.4 Slot 6

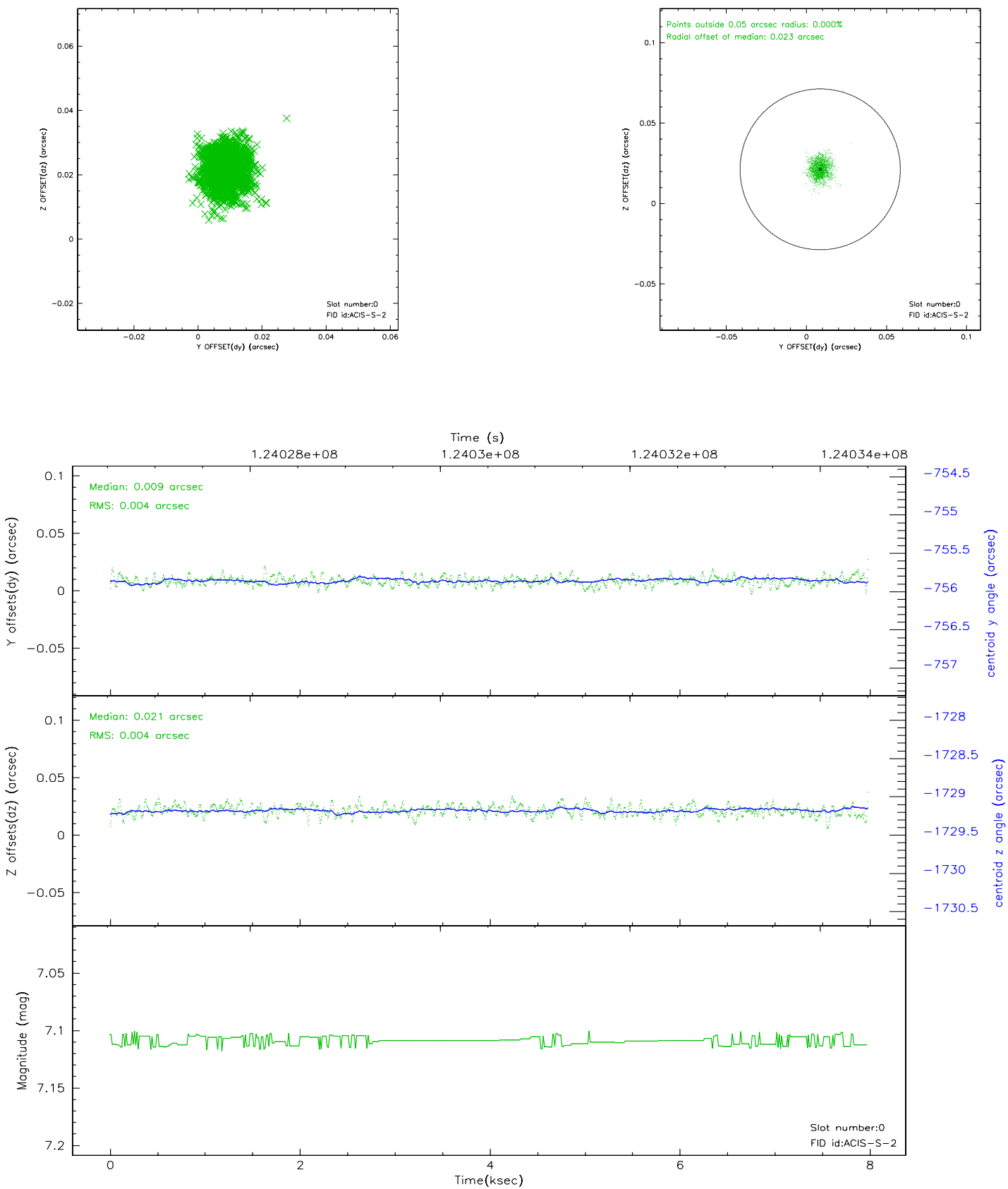


## 2.4.5 Slot 7

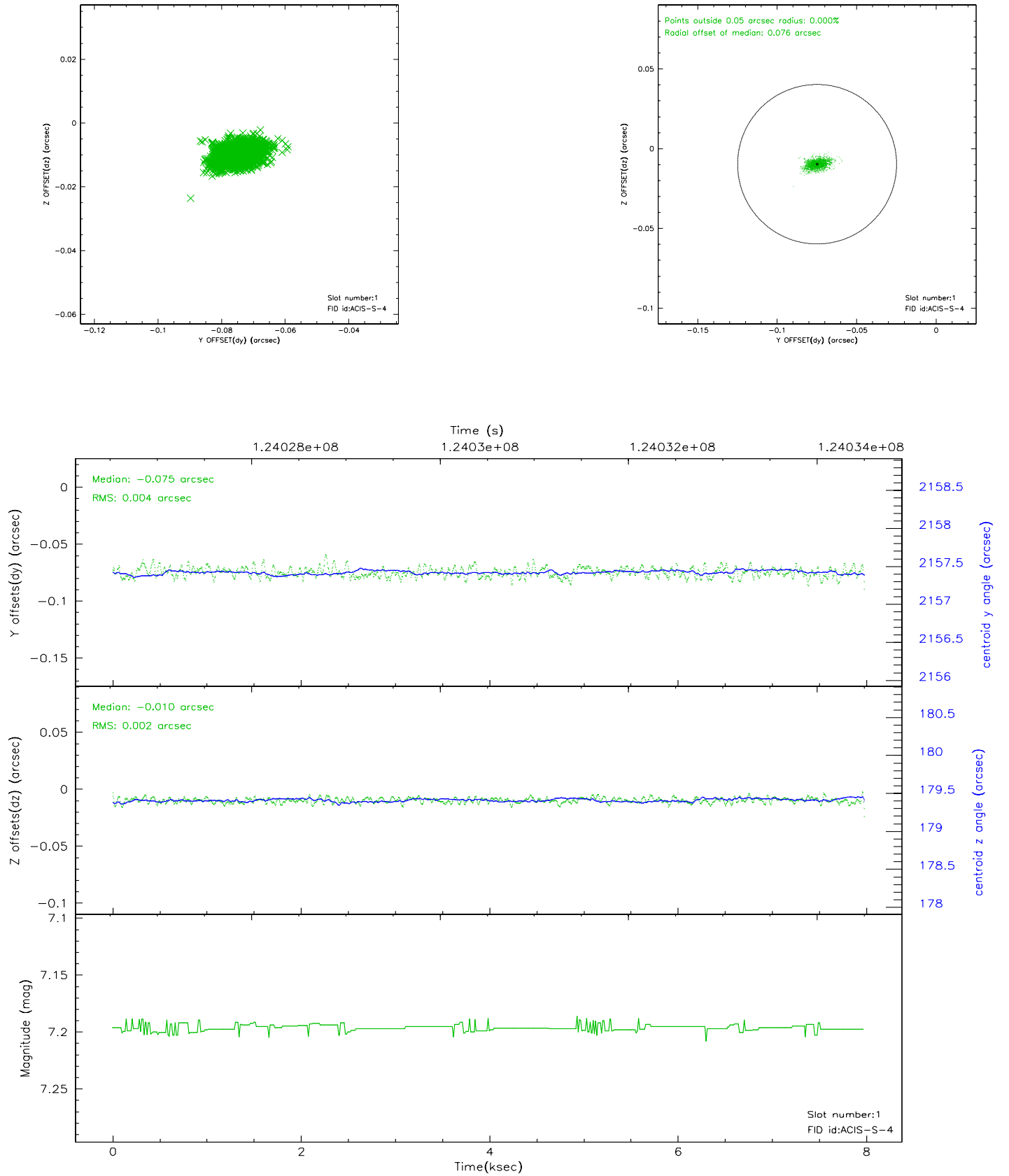


## 2.5 FID Slots

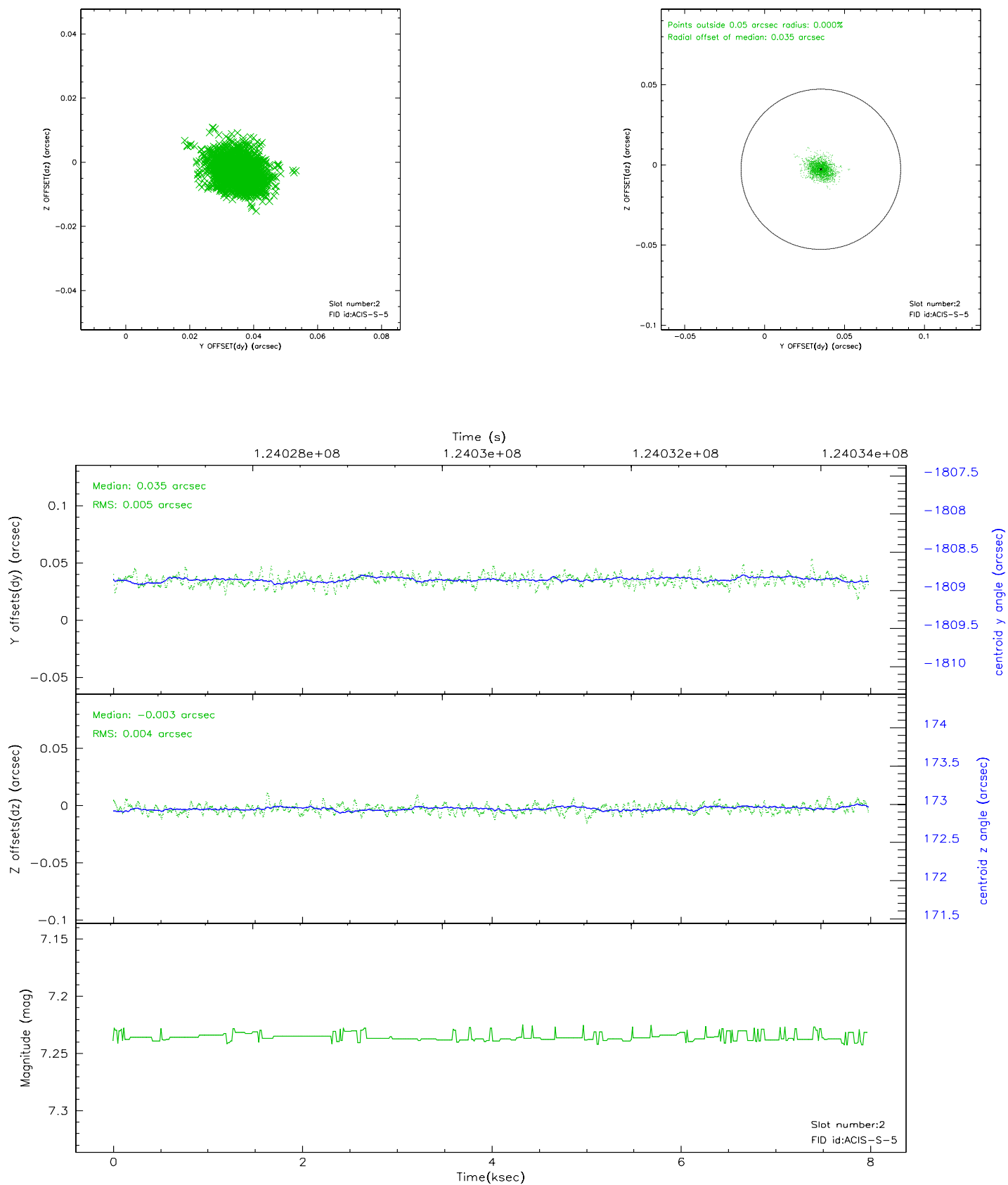
### 2.5.1 Slot 0



## 2.5.2 Slot 1

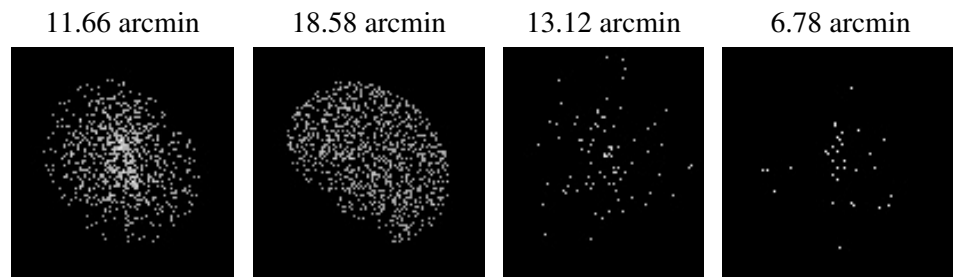


### 2.5.3 Slot 2





### 3 Point Sources



## A Summary

### A.1 Status

V&V Scientist	Beth Sundheim
V&V Date (YYYY-MM-DD)	2007.01.21
V&V Edition	1
V&V Disposition and Status	OK
V&V Charge Time	7.561

### A.2 Comments