

V&V Reference Report

L2 ASCDS Version : 7.6.10

Observation 2844 - L2 Version 001
Chandra X-Ray Center

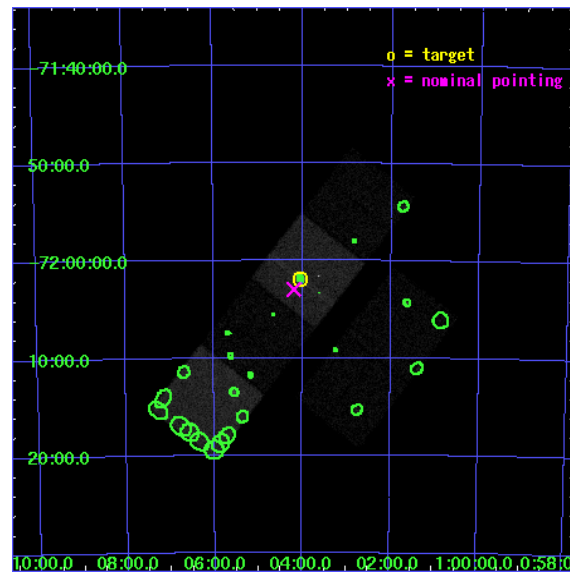
L2 Processing Date : Jan 21 2007

Contents

1	Front	2
2	OBI	3
2.1	OBI	3
2.1.1	Images	3
2.1.2	Bias	3
2.1.3	Parameters	4
2.1.4	Events	4
2.2	Compared Parameters	5
2.3	Aspect	6
2.4	Star Slots	9
2.4.1	Slot 3	9
2.4.2	Slot 4	10
2.4.3	Slot 5	11
2.4.4	Slot 6	12
2.4.5	Slot 7	13
2.5	FID Slots	14
2.5.1	Slot 0	14
2.5.2	Slot 1	15
2.5.3	Slot 2	16
3	Point Sources	17
A	Summary	18
A.1	Status	18
A.2	Comments	18

1 Front

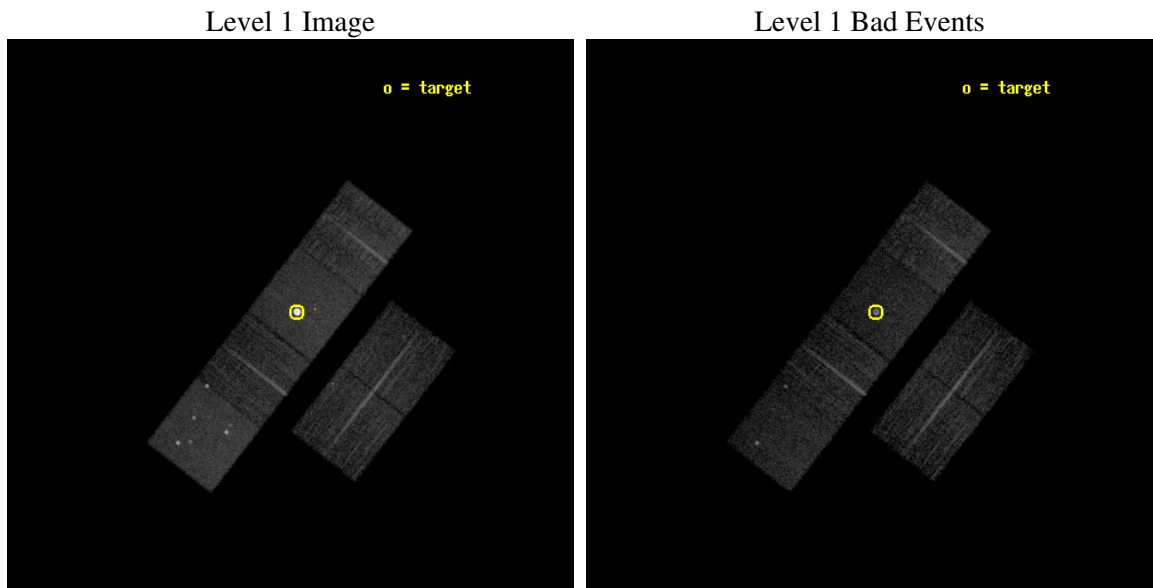
seq_num	590233
obs_id	2844
title	AO3A ACIS-S CALIBRATION OBSERVATIONS OF E0102-72
observer	Dr. CXC Calibration
object	E0102-72.3 [Chip S3, T=120, Offsets=-1.0.0]
dtcycle	0
cycle	P
ra_targ	16.01
dec_targ	-72.032028
ra_nom	16.046668422536
dec_nom	-72.049500930169
roll_nom	307.86717574364
revision	2
ontime	7552.0000070333
livetime	7456.3720356758
ontime2	7552.0000070333
ontime3	7552.0000070333
ontime5	7552.0000070333
ontime6	7552.0000070333
ontime7	7552.0000070333
ontime8	7548.7590467781
l2events	138422



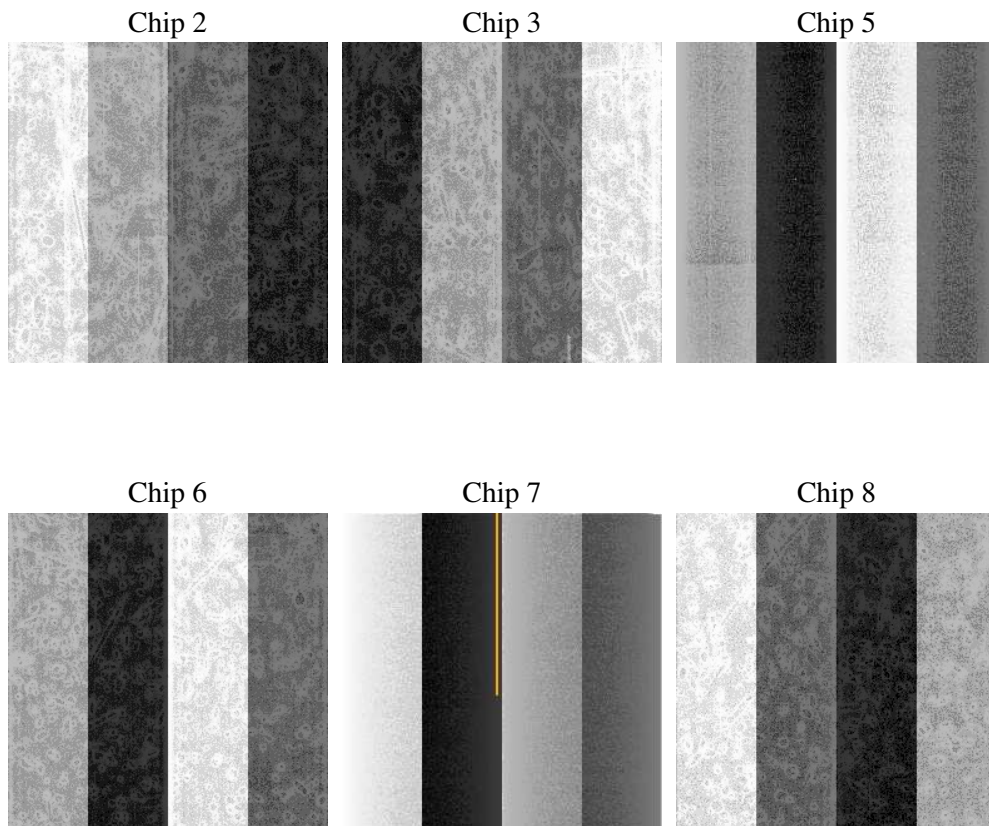
2 OBI

2.1 OBI

2.1.1 Images



2.1.2 Bias



2.1.3 Parameters

obi_num	1
ascdsver	7.6.10
caldsver	3.3.0
date	2007-01-20T13:19:33
revision	2

sched_exp_time	7800.000000
ontime	7552.0000070333
ontime2	7552.0000070333
ontime3	7552.0000070333
ontime5	7552.0000070333
ontime6	7552.0000070333
ontime7	7552.0000070333
ontime8	7548.7590467781
l1events	408220

2.1.4 Events

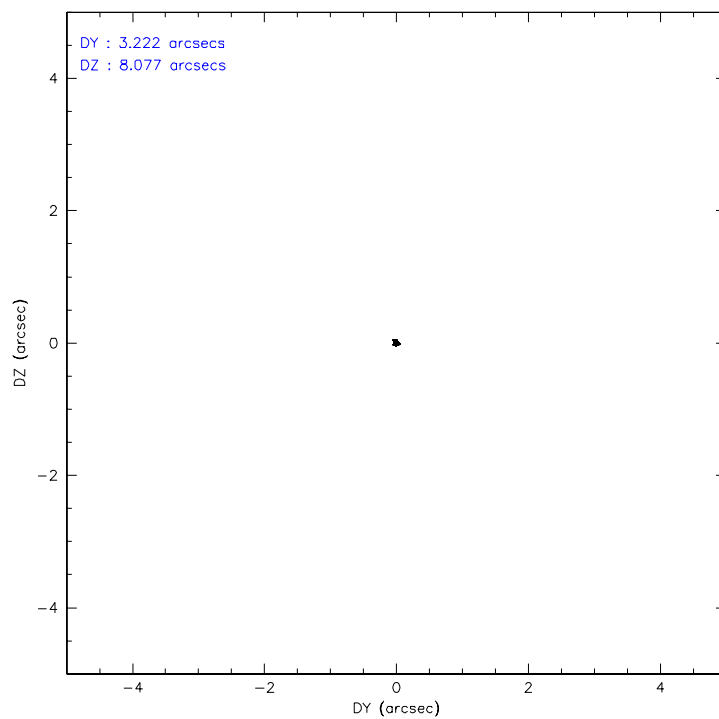
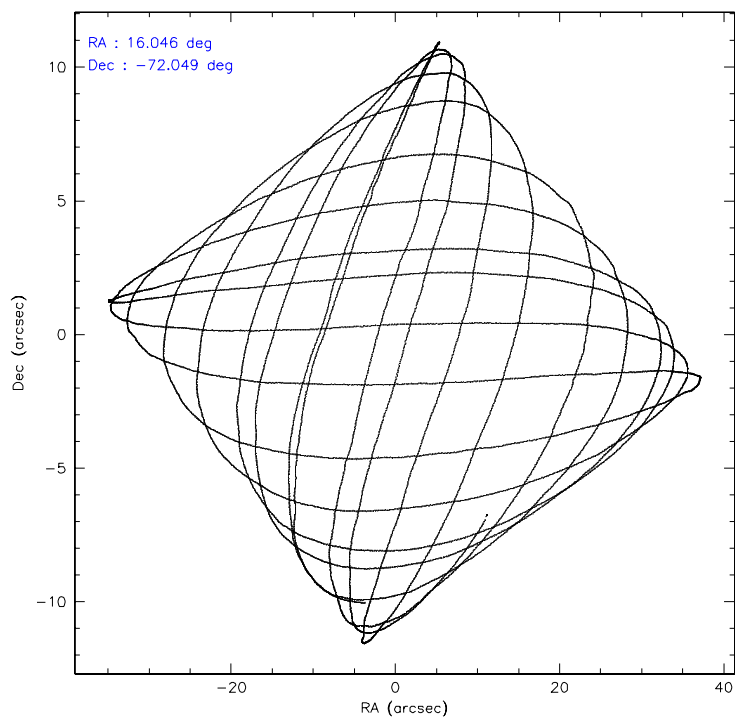
	ccd 2	ccd 3	ccd 5	ccd 6	ccd 7	ccd 8
level 1 events	49615	47133	73042	49280	125059	64091
rejected events	43472	41441	37678	42612	38351	51158
rejected %	87%	87%	51%	86%	30%	79%

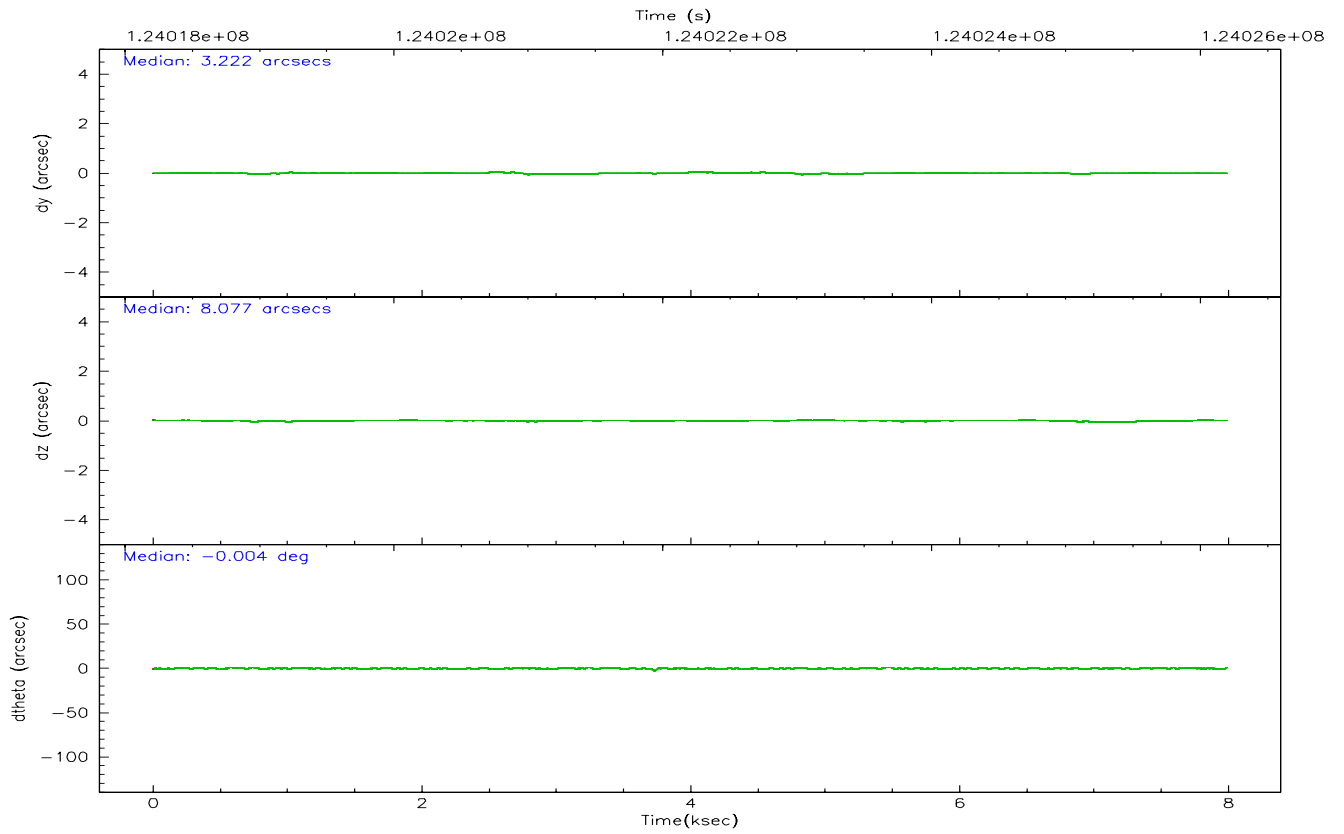
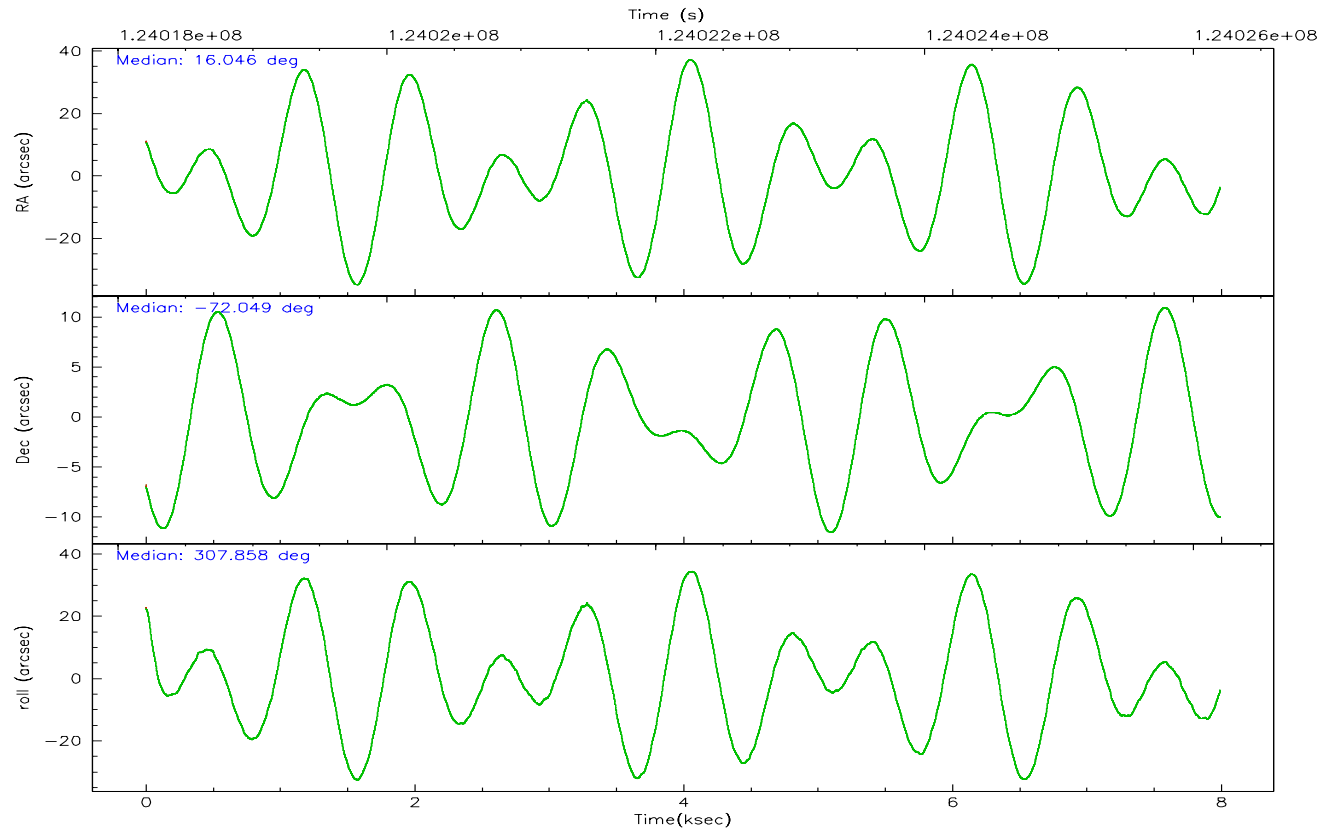
	ccd 2	ccd 3	ccd 5	ccd 6	ccd 7	ccd 8
grade 0 events	2831	2537	5504	3143	25034	4106
	5%	5%	7%	6%	20%	6%
grade 1 events	15	24	205	24	527	36
	0%	0%	0%	0%	0%	0%
grade 2 events	1300	1110	10160	1262	21330	2833
	2%	2%	13%	2%	17%	4%
grade 3 events	512	534	1493	552	9410	1342
	1%	1%	2%	1%	7%	2%
grade 4 events	516	538	1353	572	9470	1262
	1%	1%	1%	1%	7%	1%
grade 5 events	1700	1843	5623	2139	7095	2560
	3%	3%	7%	4%	5%	3%
grade 6 events	987	976	16893	1144	21531	3394
	1%	2%	23%	2%	17%	5%
grade 7 events	41754	39571	31811	40444	30662	48558
	84%	83%	43%	82%	24%	75%

2.2 Compared Parameters

Parameter	Planned	Actual	Parameter	Planned	Actual
Instrument	ACIS	ACIS	Obspar format version number	6	6
Detector	ACIS-235678	ACIS-235678	Obspar file type	PREDICTED	ACTUAL
Grating	NONE	NONE	Obspar update status	NONE	UPDATED
Data mode	FAINT	FAINT	Number of optional ACIS chips dropped	0	0
Observation mode	POINTING	POINTING	On-chip summing requested	N	N
Pointing RA	15.964519	16.04666842253572	Subarray requested	NONE	NONE
Pointing Dec	-72.039483	-72.04950093016863	Alternating exposures requested	N	N
Pointing Roll	307.632389	307.8671757436428	Primary exposure time	0.000000	3.2
Window start time	123552064.184000	123552064.184000			
Window stop time	126144064.184000	126144064.184000			
SIM focus pos (mm)	-0.684267	-0.6828225247311905			
SIM defocus (mm)	0	0.001444936568705701			
SIM translation stage pos (mm)	-190.132523	-190.1425803651734			
SIM translation stage offset (mm)	0	0.01005778216563158			
Observation start time	124018399.184000	124018023.14818			
Observation start date	2001-12-06T09:32:15	2001-12-06T09:27:03			
Observation end time	124026199.184000	124026332.82351			
Observation end date	2001-12-06T11:42:15	2001-12-06T11:45:32			
Read mode	TIMED	TIMED			

2.3 Aspect



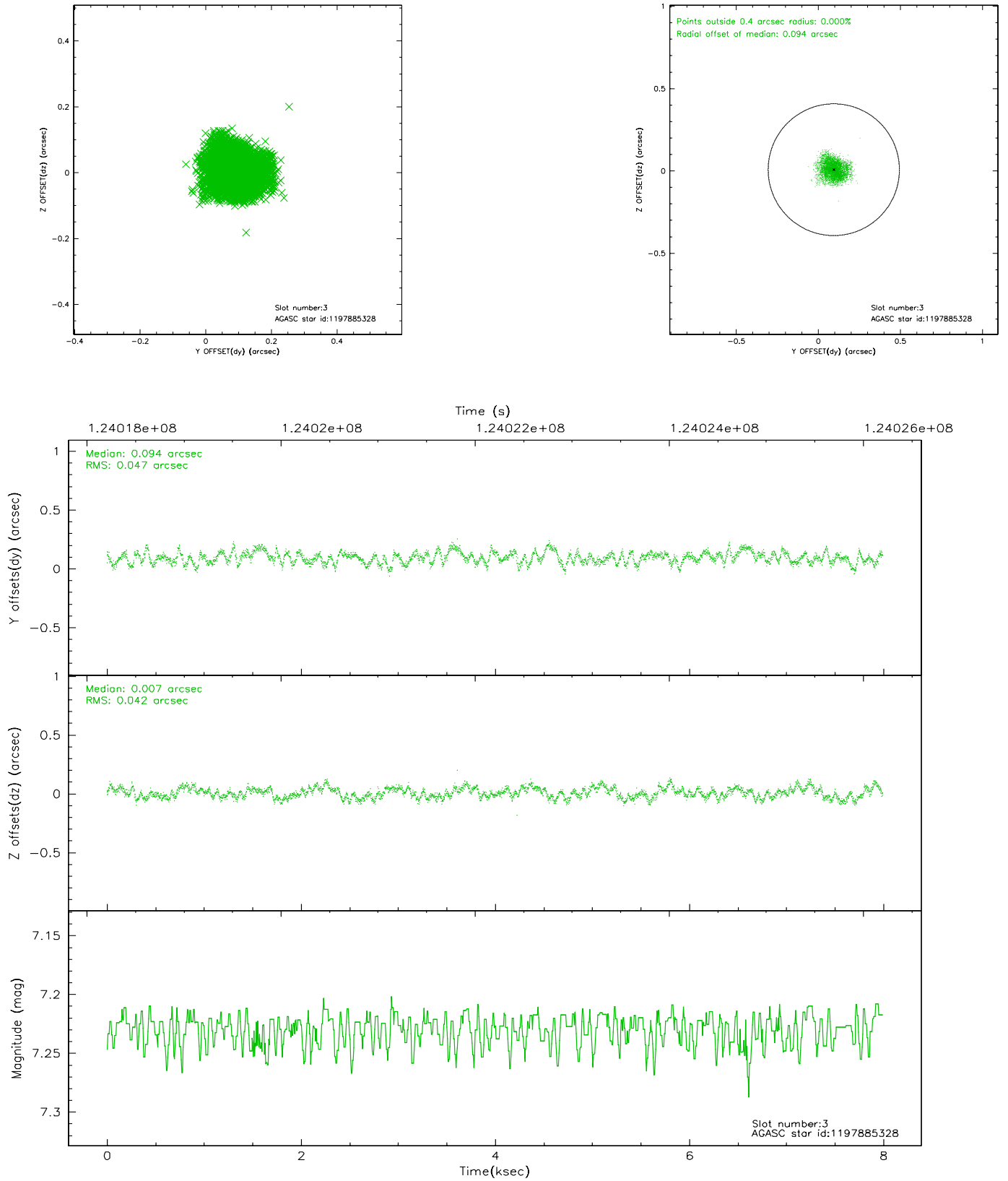


Slot Statistics

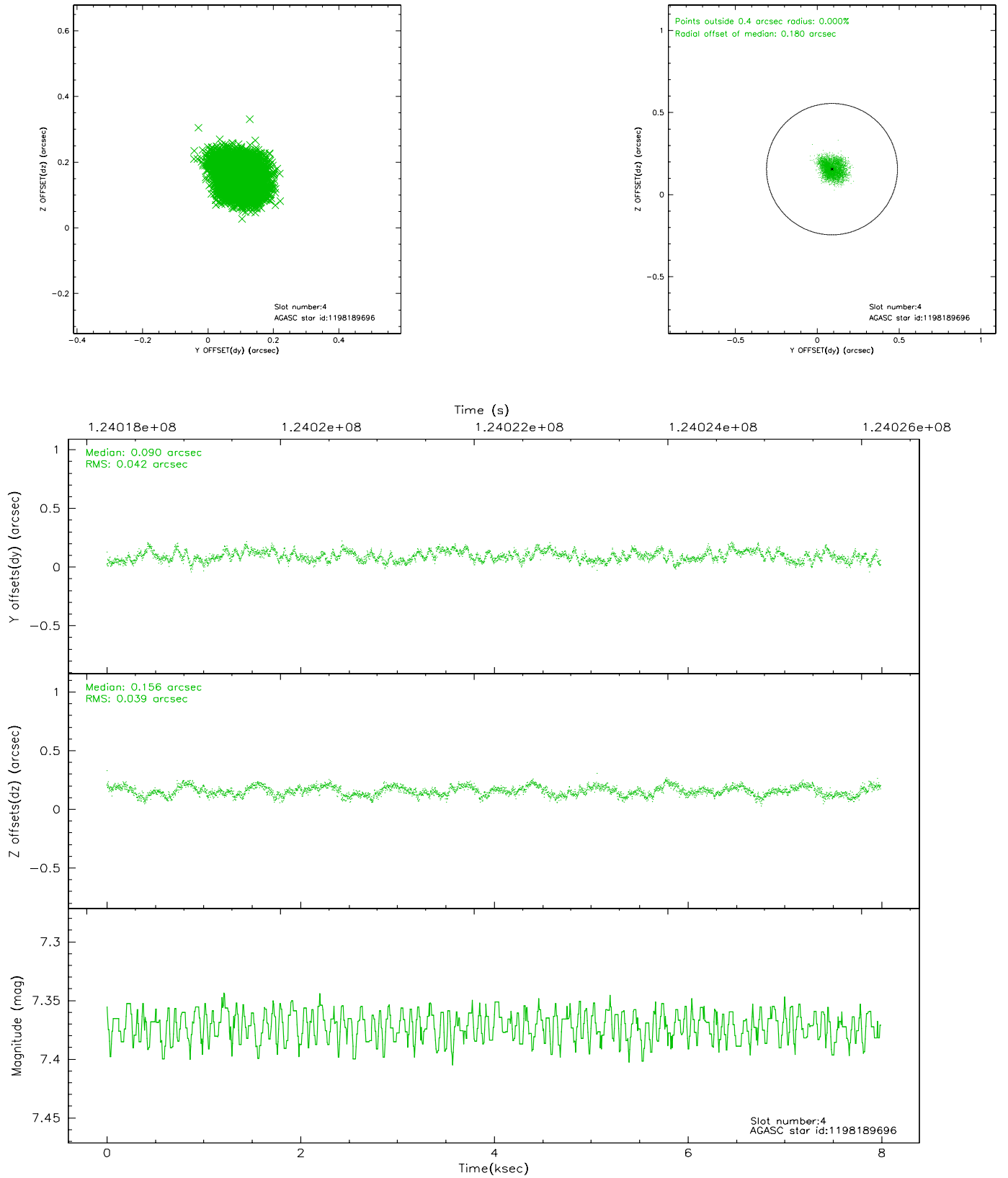
slot	status	id	mag	n_pts	med_dy	med_dz	dr1	dr2	ra	dec	mean_y	mean_z
0	FID	ACIS-S-2	7.11	1949	0.009	0.018	0.006	0.011	0.000000	0.000000	-755.87	-1729.20
1	FID	ACIS-S-4	7.20	1949	-0.074	-0.009	0.005	0.010	0.000000	0.000000	2157.02	178.51
2	FID	ACIS-S-5	7.24	1949	0.033	-0.000	0.006	0.011	0.000000	0.000000	-1807.77	173.02
3	GUIDE	1197885328	7.23	3897	0.094	0.007	0.068	0.106	16.283090	-71.733943	-650.62	956.68
4	GUIDE	1198189696	7.37	3898	0.090	0.156	0.063	0.096	15.223750	-72.697522	1396.19	-2076.14
5	GUIDE	1197884536	8.50	3896	0.072	0.120	0.084	0.131	17.160729	-71.835289	248.51	1504.29
6	GUIDE	1197878768	9.63	3897	0.097	0.007	0.117	0.183	16.656786	-71.304581	-1603.85	2246.39
7	BAD	1197749416	10.27	3713	-0.357	-0.305	0.166	0.270	13.610513	-71.871242	-2048.60	-1747.79

2.4 Star Slots

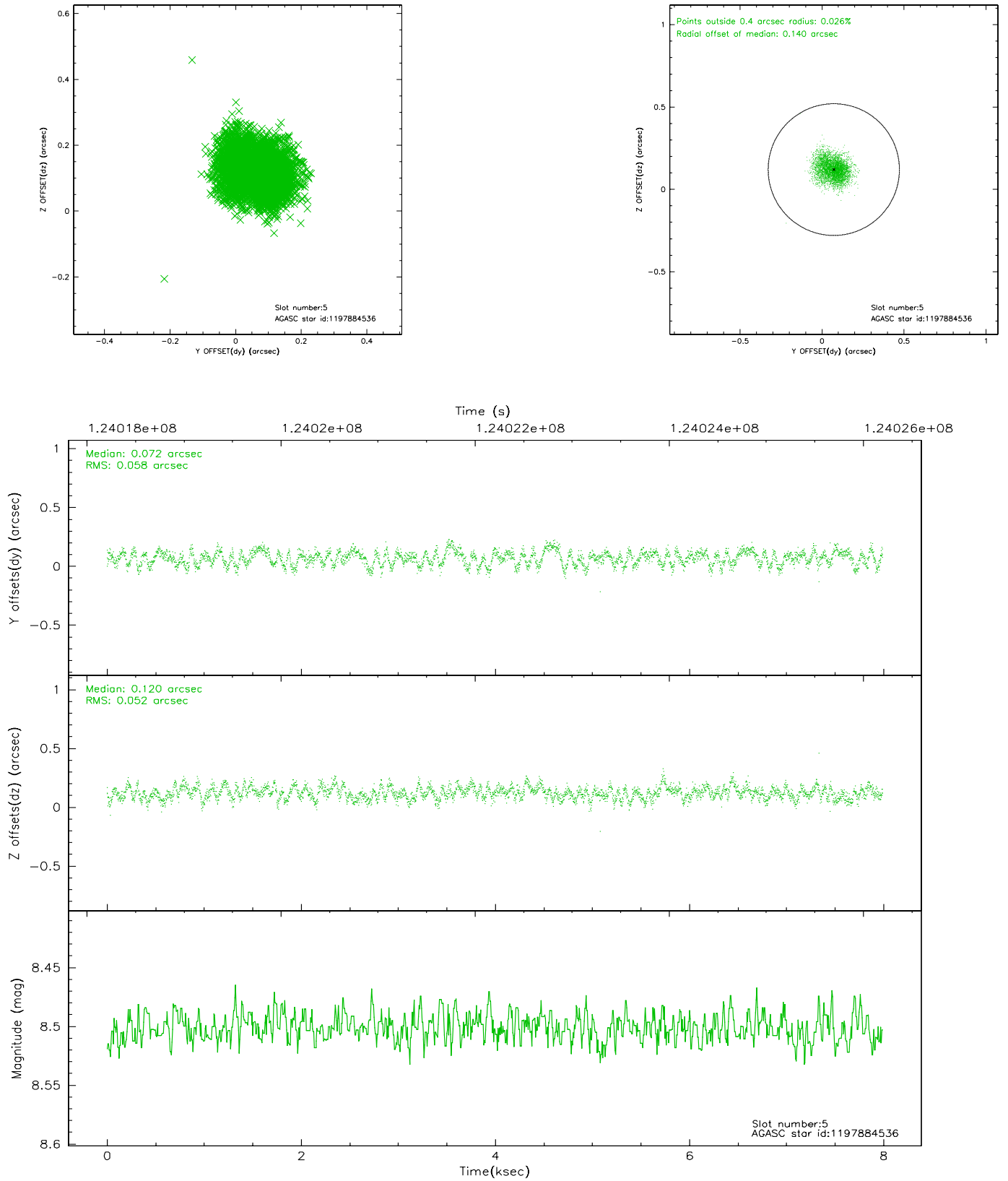
2.4.1 Slot 3



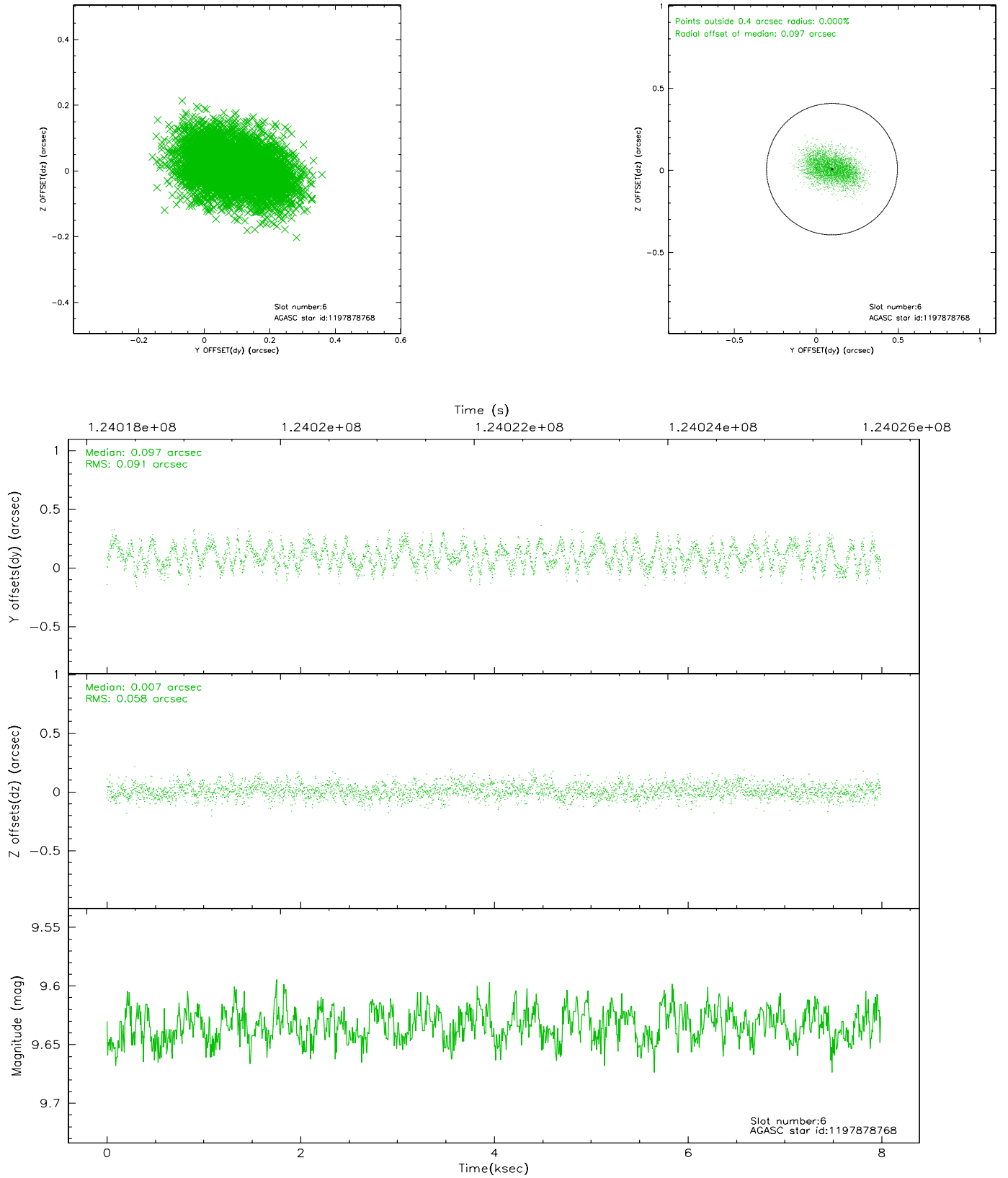
2.4.2 Slot 4



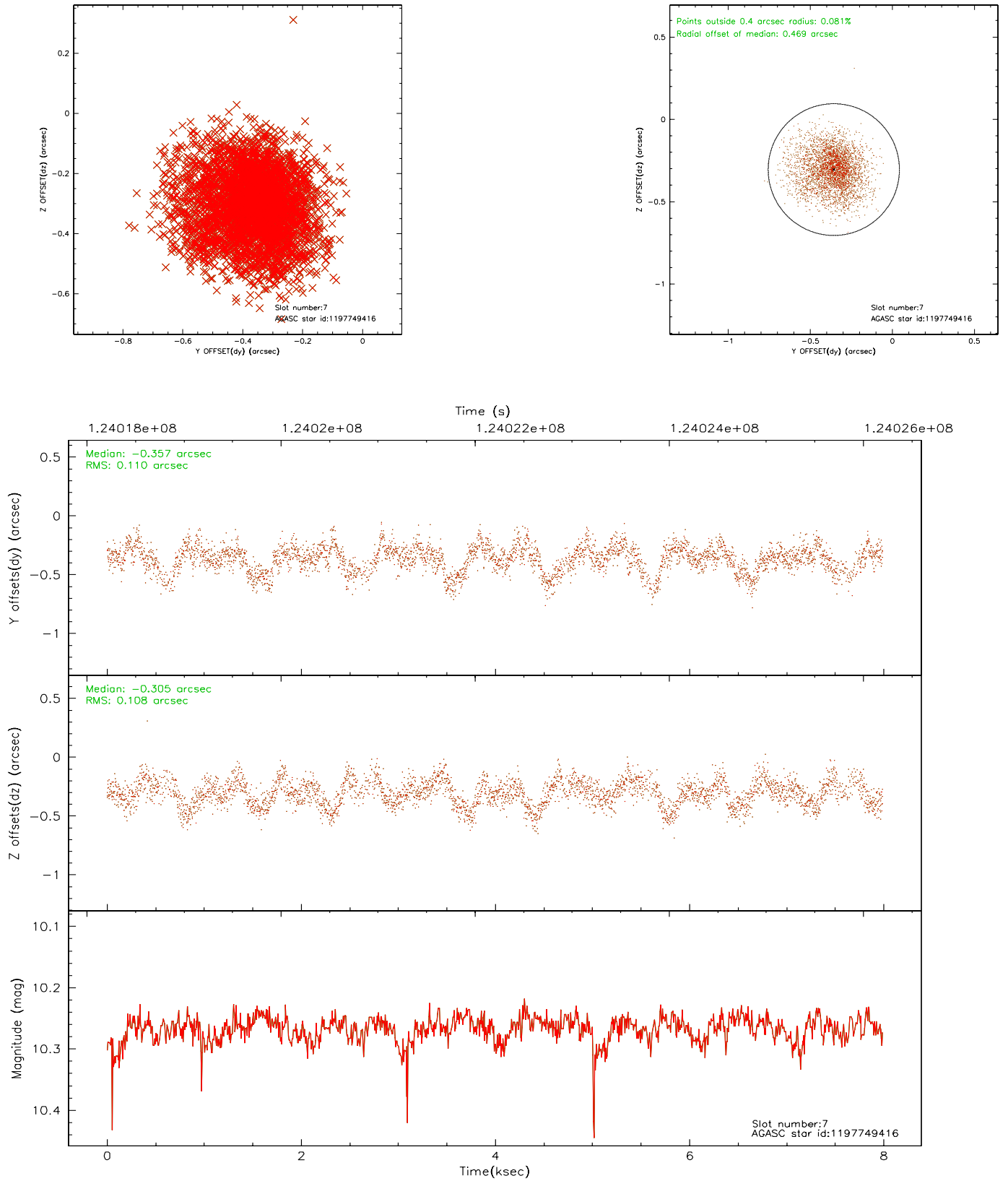
2.4.3 Slot 5



2.4.4 Slot 6

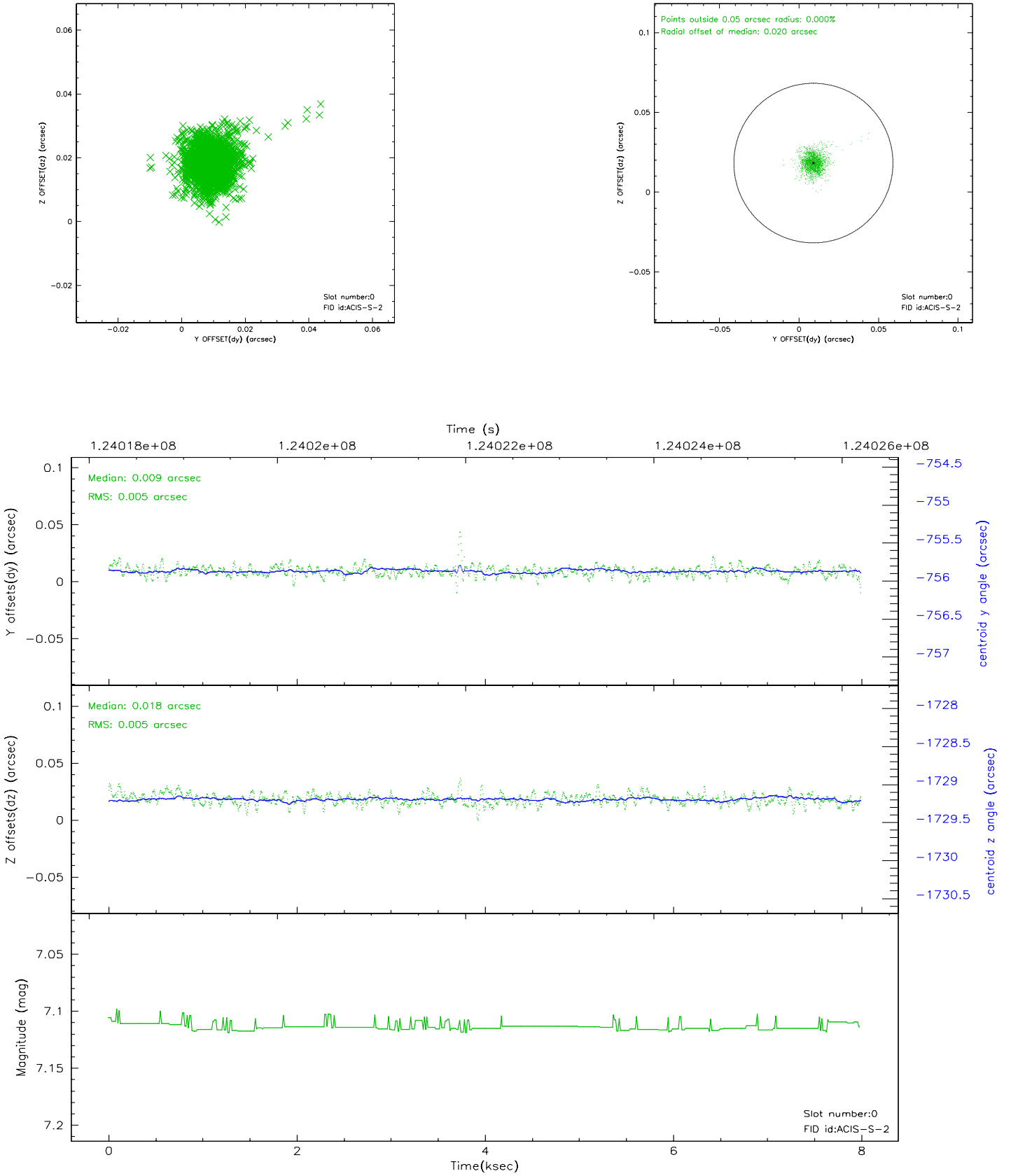


2.4.5 Slot 7

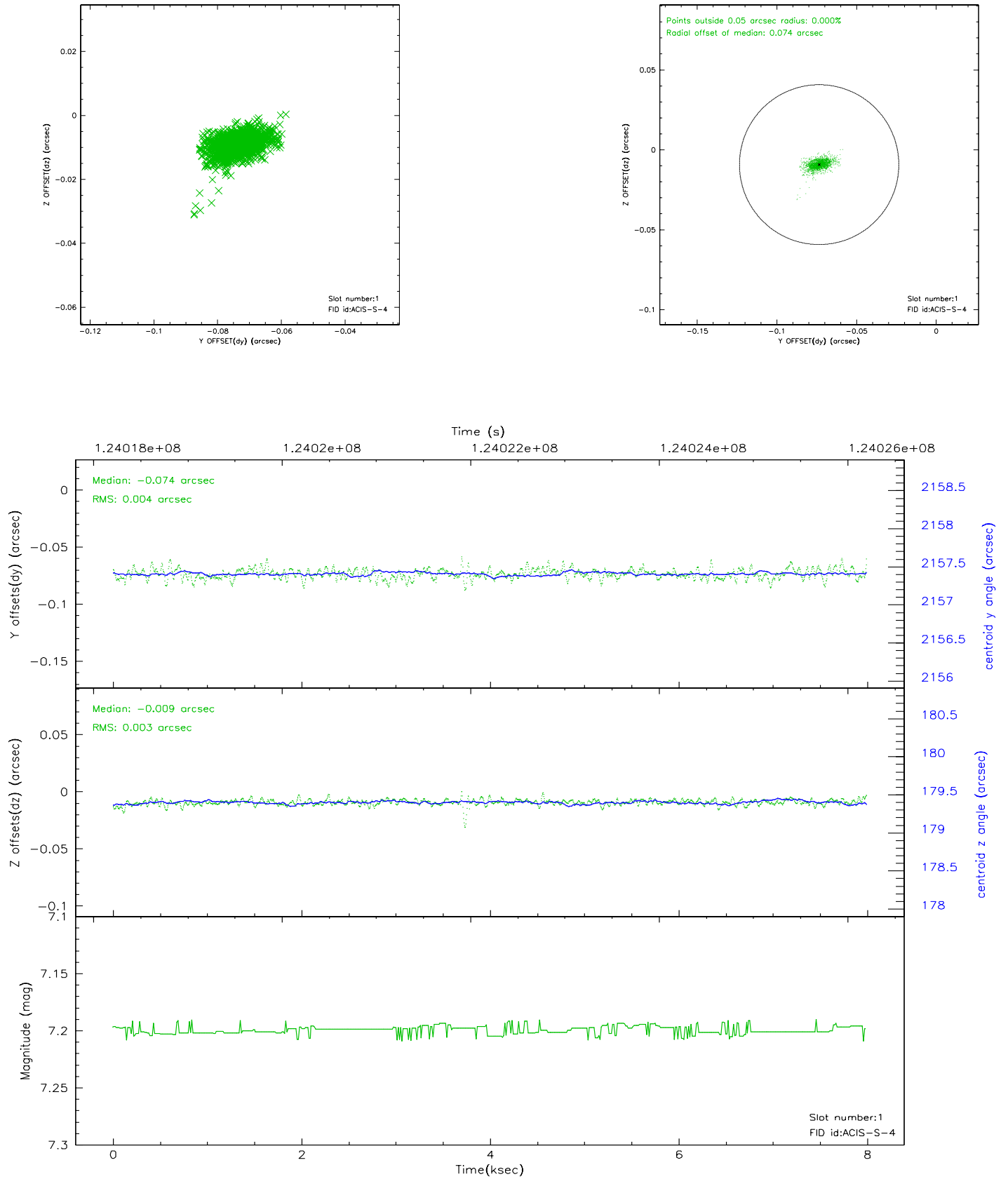


2.5 FID Slots

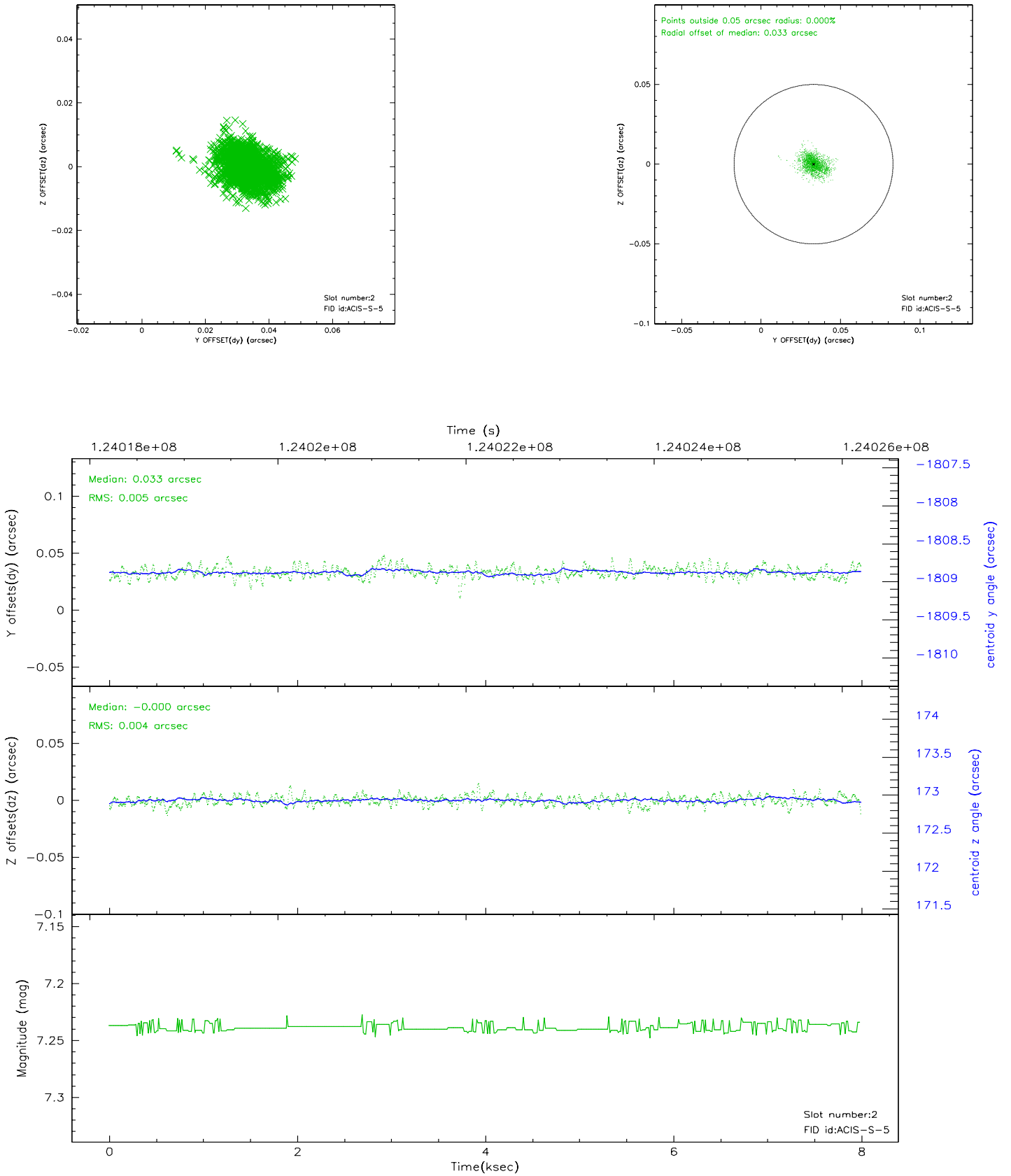
2.5.1 Slot 0



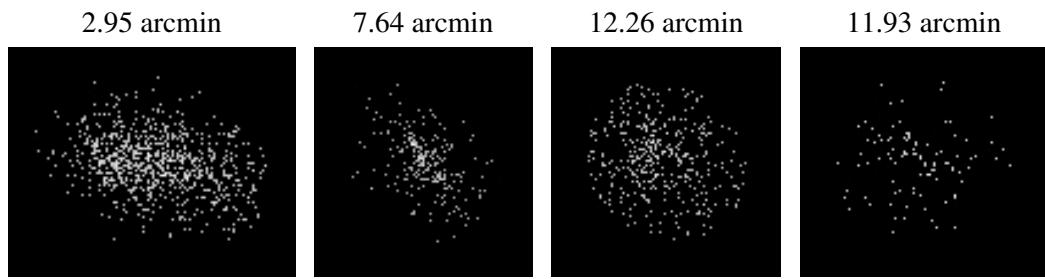
2.5.2 Slot 1



2.5.3 Slot 2



3 Point Sources



A Summary

A.1 Status

V&V Scientist	Beth Sundheim
V&V Date (YYYY-MM-DD)	2007.01.21
V&V Edition	1
V&V Disposition and Status	OK
V&V Charge Time	7.555

A.2 Comments

The guide star in slot 7 was removed from the aspect solution due to poor data quality. The aspect solution is not expected to be degraded by removing one guide star or fid light from the solution.