

V&V Reference Report

L2 ASCDS Version : 7.6.10

Observation 2843 - L2 Version 001
Chandra X-Ray Center

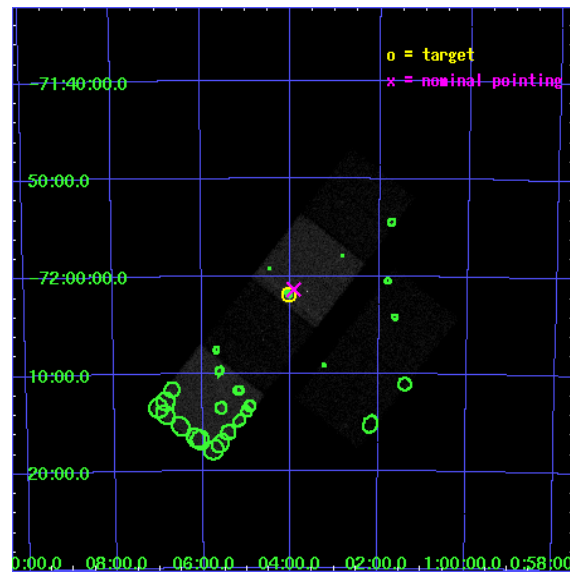
L2 Processing Date : Jan 21 2007

Contents

| | | |
|----------|-------------------------------|-----------|
| 1 | Front | 2 |
| 2 | OBI | 3 |
| 2.1 | OBI | 3 |
| 2.1.1 | Images | 3 |
| 2.1.2 | Bias | 3 |
| 2.1.3 | Parameters | 4 |
| 2.1.4 | Events | 4 |
| 2.2 | Compared Parameters | 5 |
| 2.3 | Aspect | 6 |
| 2.4 | Star Slots | 9 |
| 2.4.1 | Slot 3 | 9 |
| 2.4.2 | Slot 4 | 10 |
| 2.4.3 | Slot 5 | 11 |
| 2.4.4 | Slot 6 | 12 |
| 2.4.5 | Slot 7 | 13 |
| 2.5 | FID Slots | 14 |
| 2.5.1 | Slot 0 | 14 |
| 2.5.2 | Slot 1 | 15 |
| 2.5.3 | Slot 2 | 16 |
| 3 | Point Sources | 17 |
| A | Summary | 18 |
| A.1 | Status | 18 |
| A.2 | Comments | 18 |

1 Front

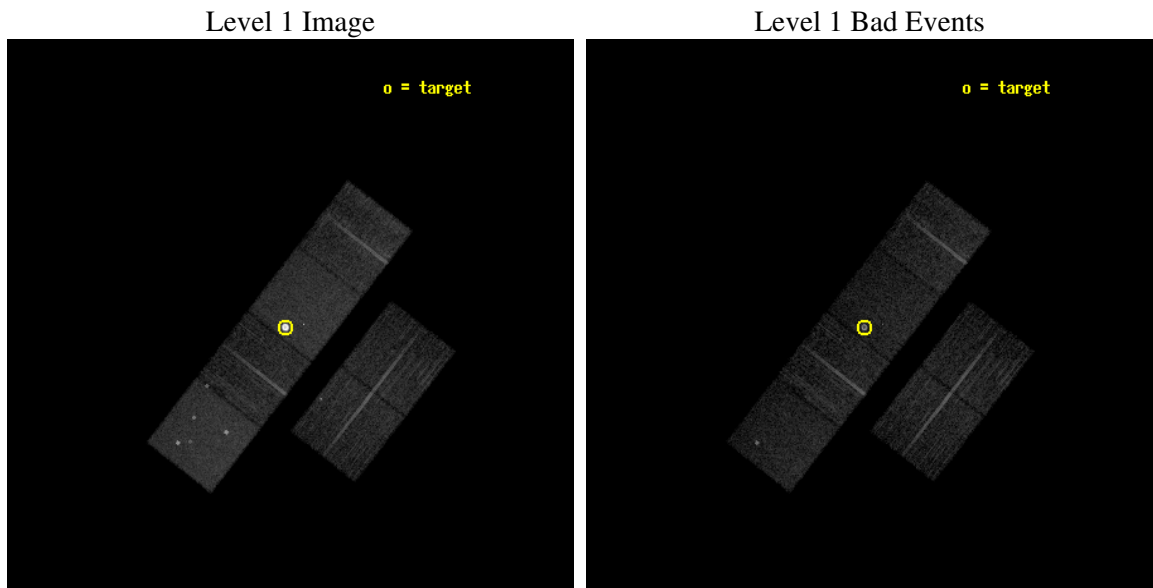
| | |
|----------|--|
| seq_num | 590232 |
| obs_id | 2843 |
| title | AO3A ACIS-S CALIBRATION OBSERVATIONS OF E0102-72 |
| observer | Dr. CXC Calibration |
| object | E0102-72.3 [Chip S3, T=120, Offsets=1,0,0] |
| dtcycle | 0 |
| cycle | P |
| ra_targ | 16.01 |
| dec_targ | -72.032028 |
| ra_nom | 15.980578013646 |
| dec_nom | -72.023093572873 |
| roll_nom | 307.91721790391 |
| revision | 2 |
| ontime | 7760.0000072271 |
| livetime | 7661.7382146245 |
| ontime2 | 7760.0000072271 |
| ontime3 | 7760.0000072271 |
| ontime5 | 7760.0000072271 |
| ontime6 | 7760.0000072271 |
| ontime7 | 7760.0000072271 |
| ontime8 | 7760.0000072271 |
| l2events | 144103 |



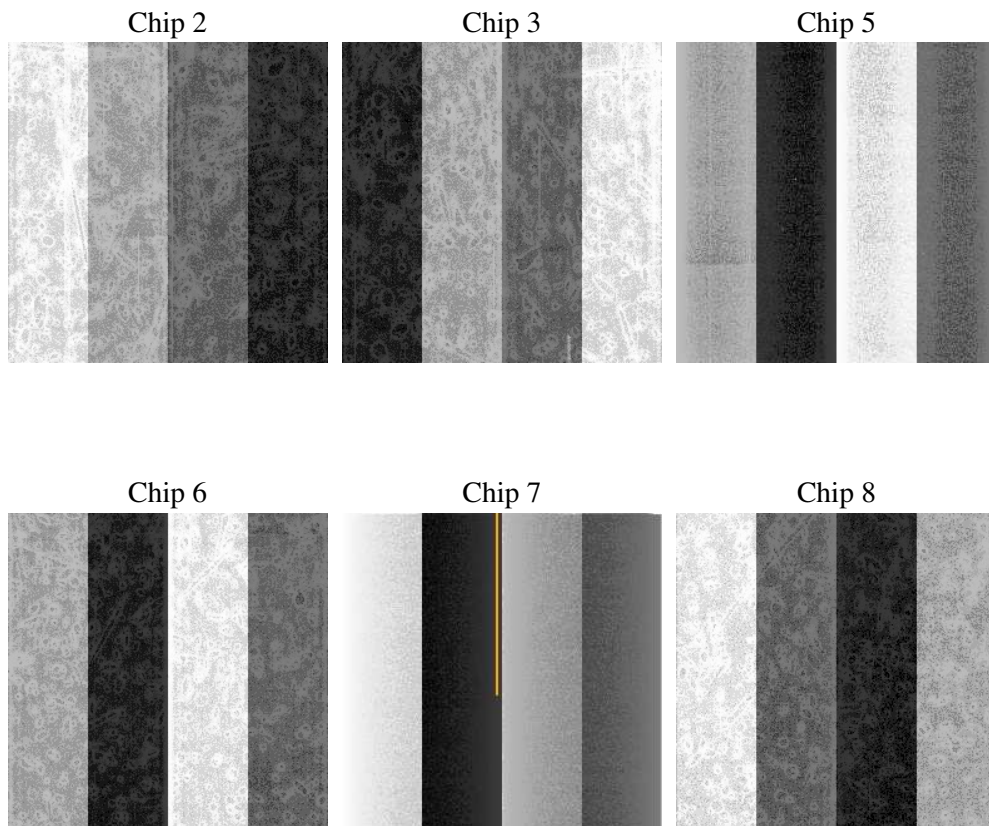
2 OBI

2.1 OBI

2.1.1 Images



2.1.2 Bias



2.1.3 Parameters

| | |
|----------|---------------------|
| obi_num | 1 |
| ascdsver | 7.6.10 |
| caldbver | 3.3.0 |
| date | 2007-01-20T12:48:10 |
| revision | 2 |

| | |
|----------------|-----------------|
| sched_exp_time | 7800.000000 |
| ontime | 7760.0000072271 |
| ontime2 | 7760.0000072271 |
| ontime3 | 7760.0000072271 |
| ontime5 | 7760.0000072271 |
| ontime6 | 7760.0000072271 |
| ontime7 | 7760.0000072271 |
| ontime8 | 7760.0000072271 |
| l1events | 417598 |

2.1.4 Events

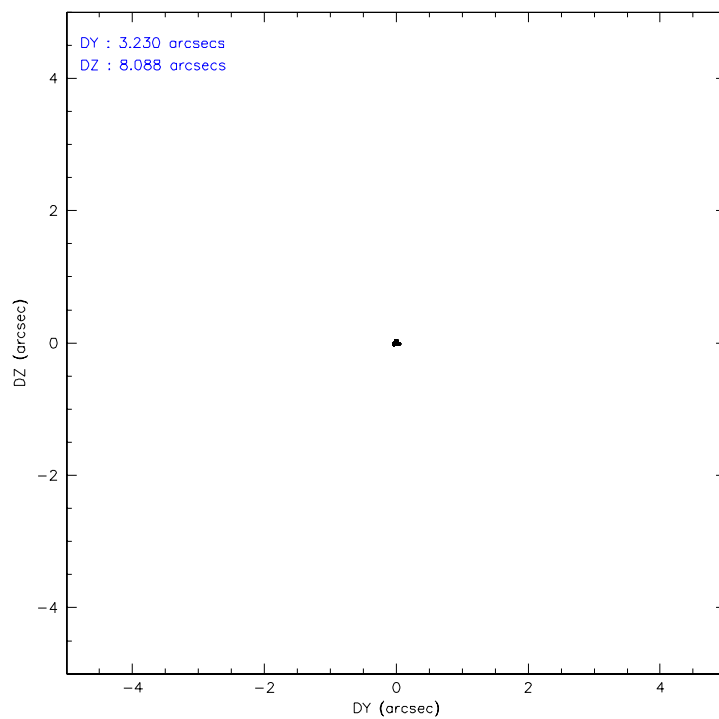
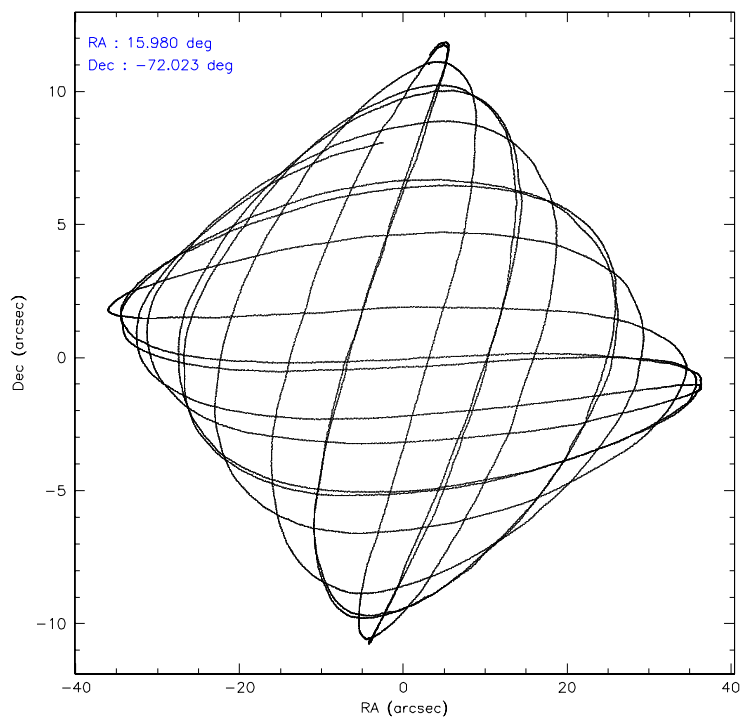
| | ccd 2 | ccd 3 | ccd 5 | ccd 6 | ccd 7 | ccd 8 |
|-----------------|-------|-------|-------|-------|--------|-------|
| level 1 events | 50847 | 47955 | 76119 | 51763 | 129752 | 61162 |
| rejected events | 44488 | 42063 | 38532 | 45265 | 39586 | 48485 |
| rejected % | 87% | 87% | 50% | 87% | 30% | 79% |

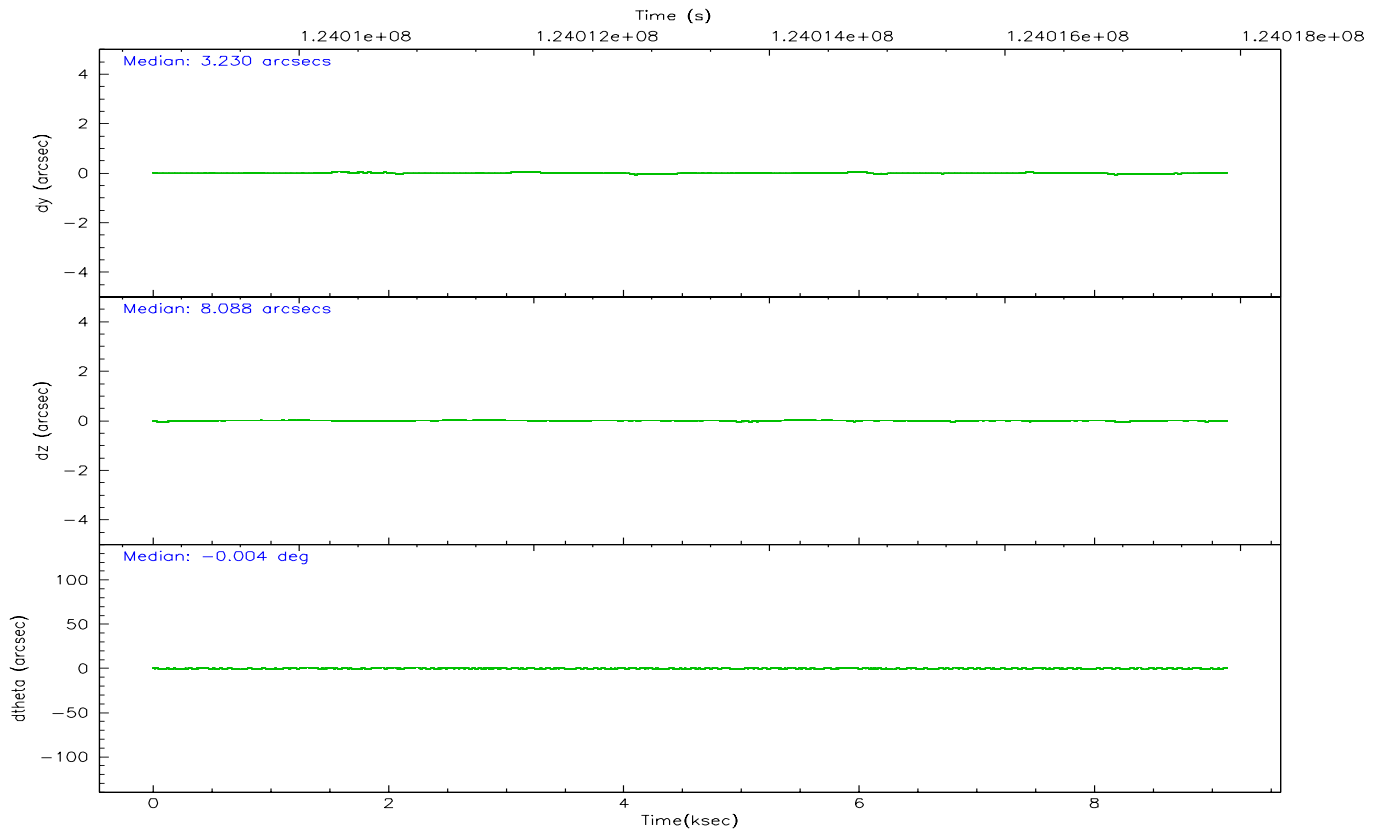
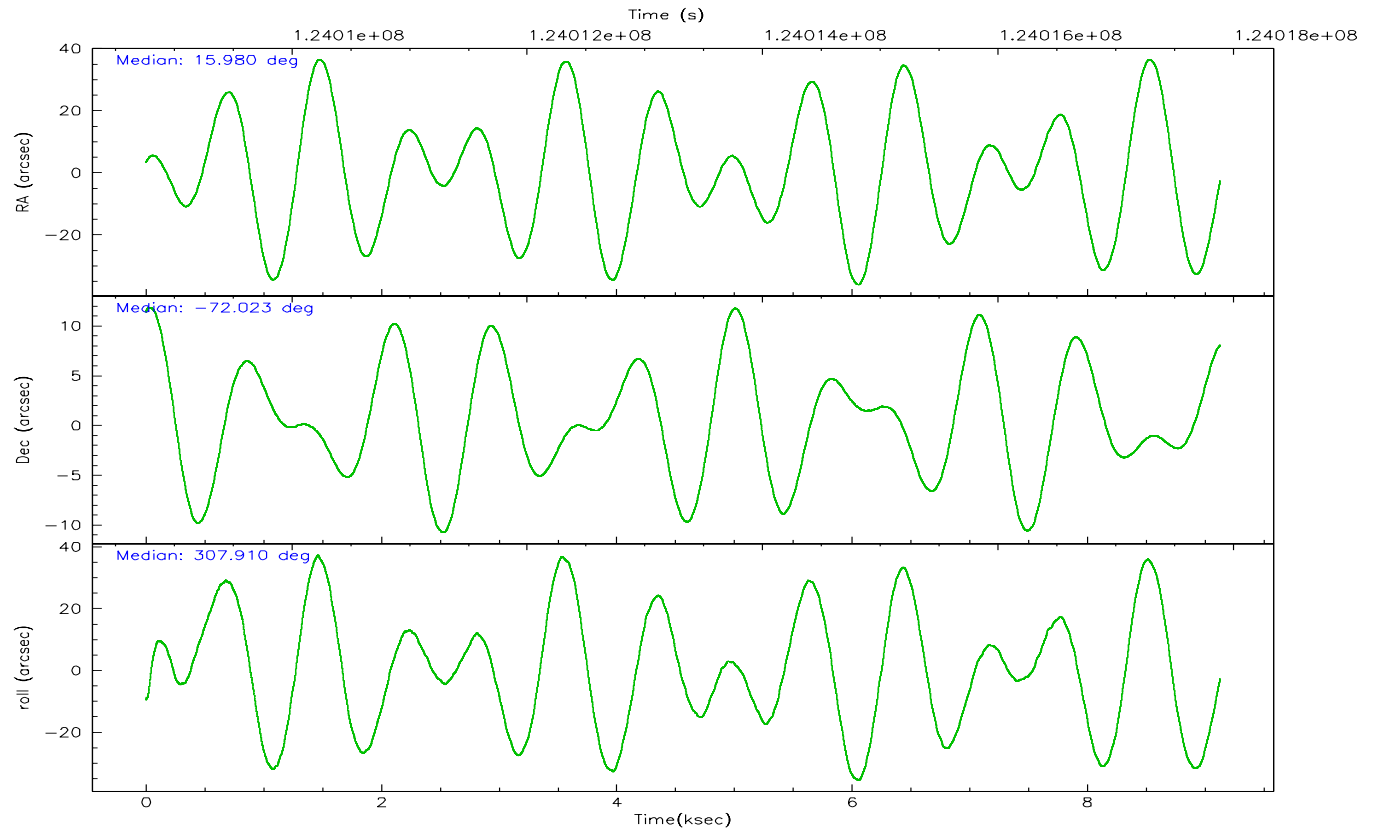
| | ccd 2 | ccd 3 | ccd 5 | ccd 6 | ccd 7 | ccd 8 |
|----------------|-------|-------|-------|-------|-------|-------|
| grade 0 events | 2872 | 2612 | 6254 | 3030 | 22546 | 4170 |
| | 5% | 5% | 8% | 5% | 17% | 6% |
| grade 1 events | 26 | 19 | 103 | 34 | 495 | 28 |
| | 0% | 0% | 0% | 0% | 0% | 0% |
| grade 2 events | 1334 | 1206 | 10783 | 1234 | 22862 | 2669 |
| | 2% | 2% | 14% | 2% | 17% | 4% |
| grade 3 events | 527 | 515 | 1603 | 562 | 10334 | 1359 |
| | 1% | 1% | 2% | 1% | 7% | 2% |
| grade 4 events | 575 | 548 | 1536 | 554 | 9852 | 1281 |
| | 1% | 1% | 2% | 1% | 7% | 2% |
| grade 5 events | 1823 | 1844 | 5738 | 1989 | 7281 | 2689 |
| | 3% | 3% | 7% | 3% | 5% | 4% |
| grade 6 events | 1051 | 1013 | 17425 | 1118 | 24608 | 3204 |
| | 2% | 2% | 22% | 2% | 18% | 5% |
| grade 7 events | 42639 | 40198 | 32677 | 43242 | 31774 | 45762 |
| | 83% | 83% | 42% | 83% | 24% | 74% |

2.2 Compared Parameters

| Parameter | Planned | Actual | Parameter | Planned | Actual |
|-----------------------------------|---------------------|----------------------|---------------------------------------|-----------|---------|
| Instrument | ACIS | ACIS | Obspar format version number | 6 | 6 |
| Detector | ACIS-235678 | ACIS-235678 | Obspar file type | PREDICTED | ACTUAL |
| Grating | NONE | NONE | Obspar update status | NONE | UPDATED |
| Data mode | FAINT | FAINT | Number of optional ACIS chips dropped | 0 | 0 |
| Observation mode | POINTING | POINTING | On-chip summing requested | N | N |
| Pointing RA | 15.898479 | 15.98057801364575 | Subarray requested | NONE | NONE |
| Pointing Dec | -72.013122 | -72.02309357287254 | Alternating exposures requested | N | N |
| Pointing Roll | 307.682506 | 307.9172179039138 | Primary exposure time | 0.000000 | 3.2 |
| Window start time | 123552064.184000 | 123552064.184000 | | | |
| Window stop time | 126144064.184000 | 126144064.184000 | | | |
| SIM focus pos (mm) | -0.684267 | -0.6828225247311905 | | | |
| SIM defocus (mm) | 0 | 0.001444936568705701 | | | |
| SIM translation stage pos (mm) | -190.132523 | -190.1425803651734 | | | |
| SIM translation stage offset (mm) | 0 | 0.01005778216563158 | | | |
| Observation start time | 124010089.184000 | 124008558.8103 | | | |
| Observation start date | 2001-12-06T07:13:45 | 2001-12-06T06:49:18 | | | |
| Observation end time | 124017889.184000 | 124018023.14818 | | | |
| Observation end date | 2001-12-06T09:23:45 | 2001-12-06T09:27:03 | | | |
| Read mode | TIMED | TIMED | | | |

2.3 Aspect



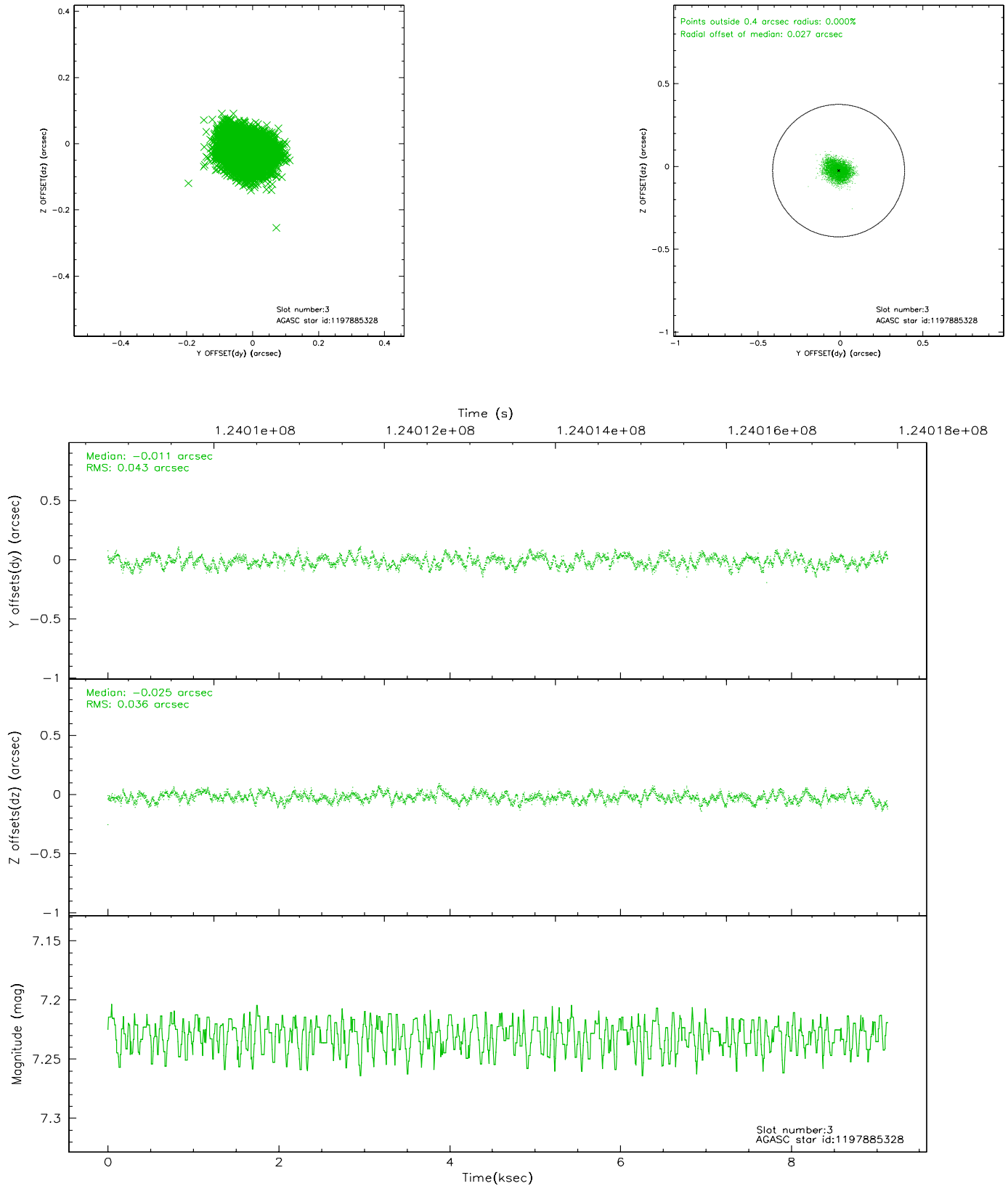


Slot Statistics

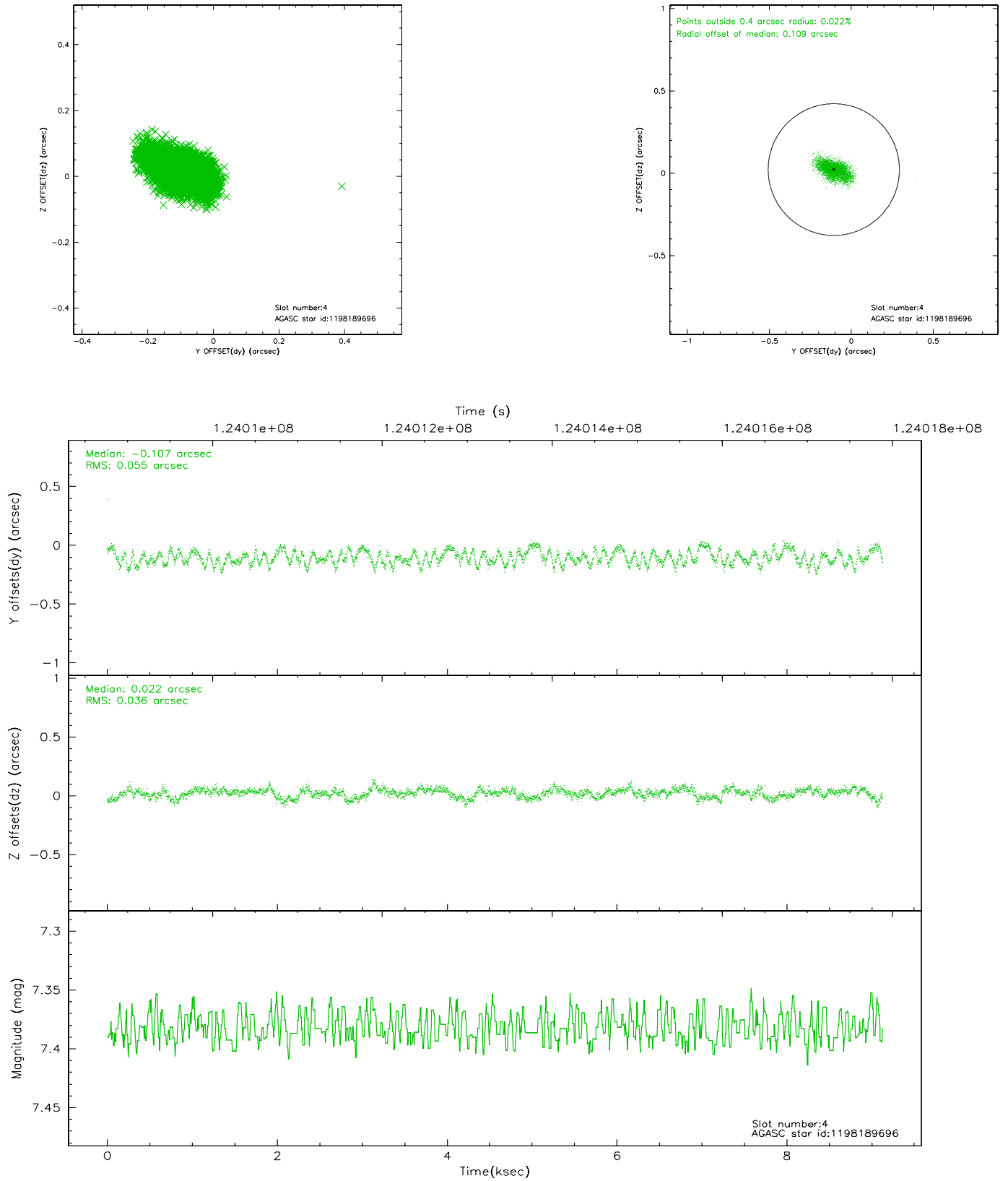
| slot | status | id | mag | n_pts | med_dy | med_dz | dr1 | dr2 | ra | dec | mean_y | mean_z |
|------|--------|------------|-------|-------|--------|--------|-------|-------|-----------|------------|----------|----------|
| 0 | FID | ACIS-S-2 | 7.12 | 2228 | 0.008 | 0.017 | 0.007 | 0.012 | 0.000000 | 0.000000 | -755.88 | -1729.21 |
| 1 | FID | ACIS-S-4 | 7.20 | 2228 | -0.072 | -0.008 | 0.005 | 0.009 | 0.000000 | 0.000000 | 2157.06 | 178.61 |
| 2 | FID | ACIS-S-5 | 7.24 | 2228 | 0.032 | 0.001 | 0.006 | 0.010 | 0.000000 | 0.000000 | -1807.92 | 173.00 |
| 3 | GUIDE | 1197885328 | 7.23 | 4456 | -0.011 | -0.025 | 0.061 | 0.094 | 16.283090 | -71.733943 | -528.96 | 957.90 |
| 4 | GUIDE | 1198189696 | 7.38 | 4456 | -0.107 | 0.022 | 0.069 | 0.115 | 15.223750 | -72.697522 | 1511.76 | -2079.14 |
| 5 | GUIDE | 1197884536 | 8.49 | 4456 | -0.013 | 0.061 | 0.063 | 0.104 | 17.160729 | -71.835289 | 371.28 | 1503.76 |
| 6 | GUIDE | 1197878768 | 9.63 | 4446 | 0.035 | -0.026 | 0.142 | 0.233 | 16.656786 | -71.304581 | -1479.53 | 2249.47 |
| 7 | GUIDE | 1197749416 | 10.26 | 4415 | 0.083 | -0.031 | 0.128 | 0.207 | 13.610513 | -71.871242 | -1931.88 | -1744.08 |

2.4 Star Slots

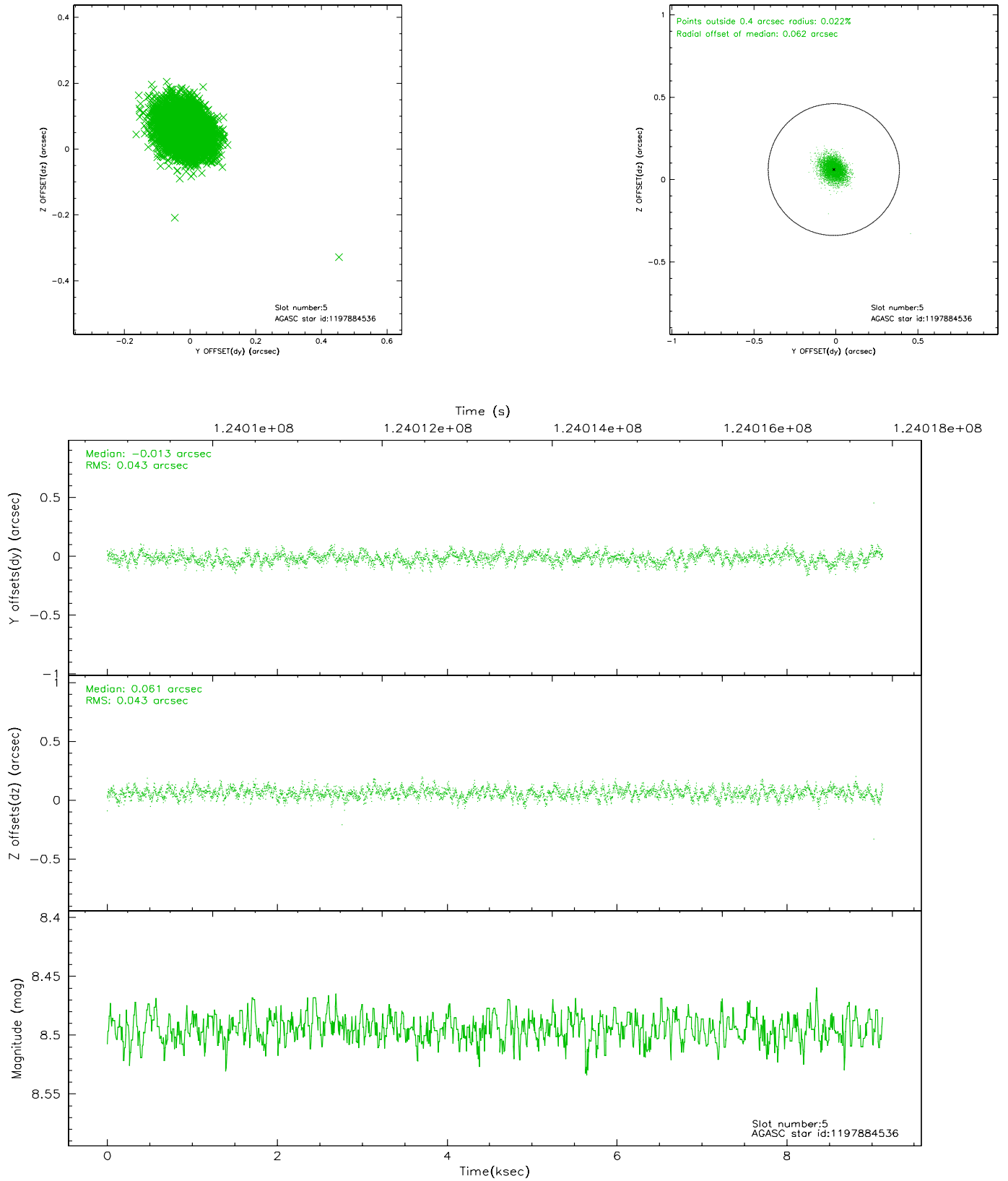
2.4.1 Slot 3



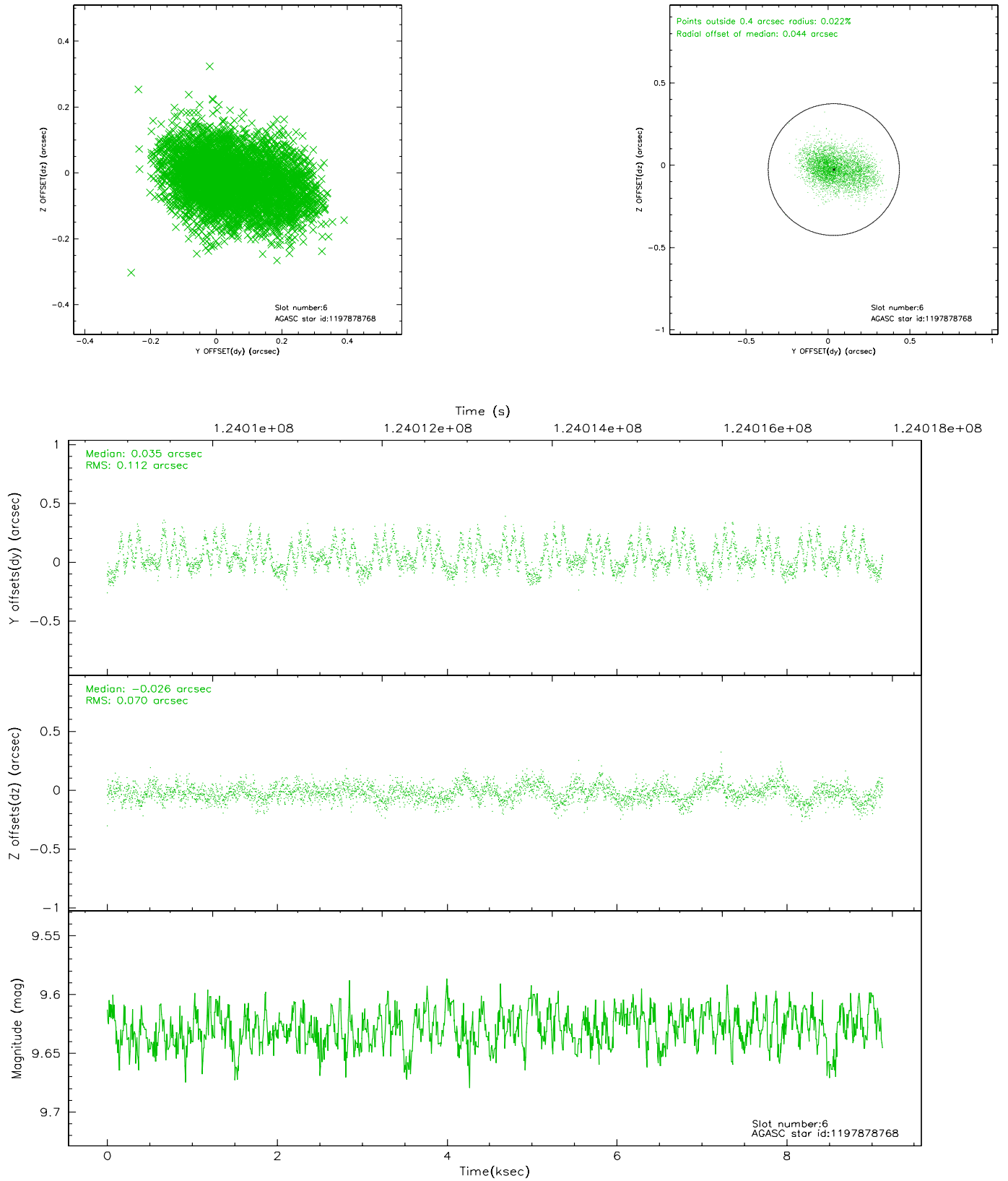
2.4.2 Slot 4



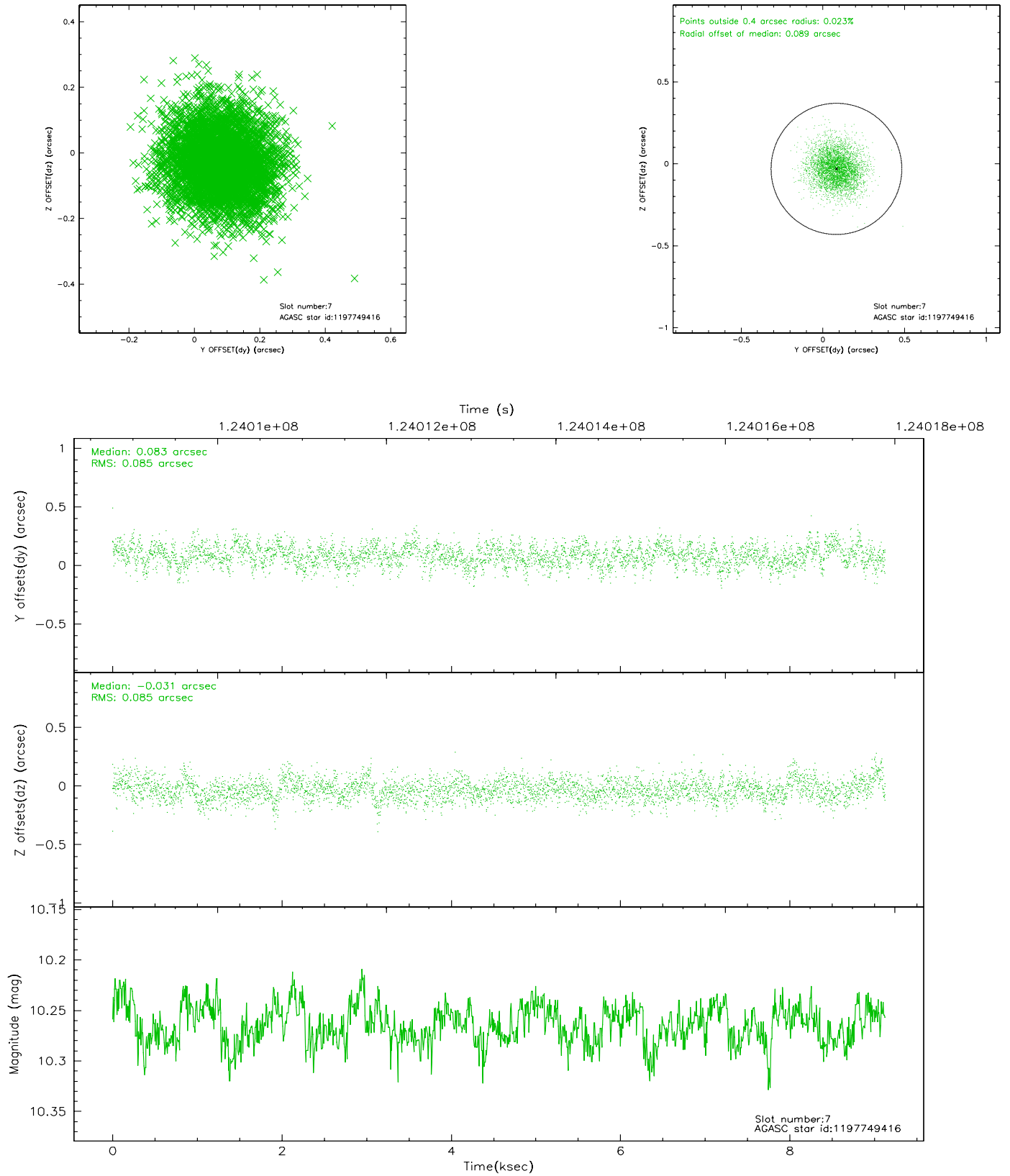
2.4.3 Slot 5



2.4.4 Slot 6

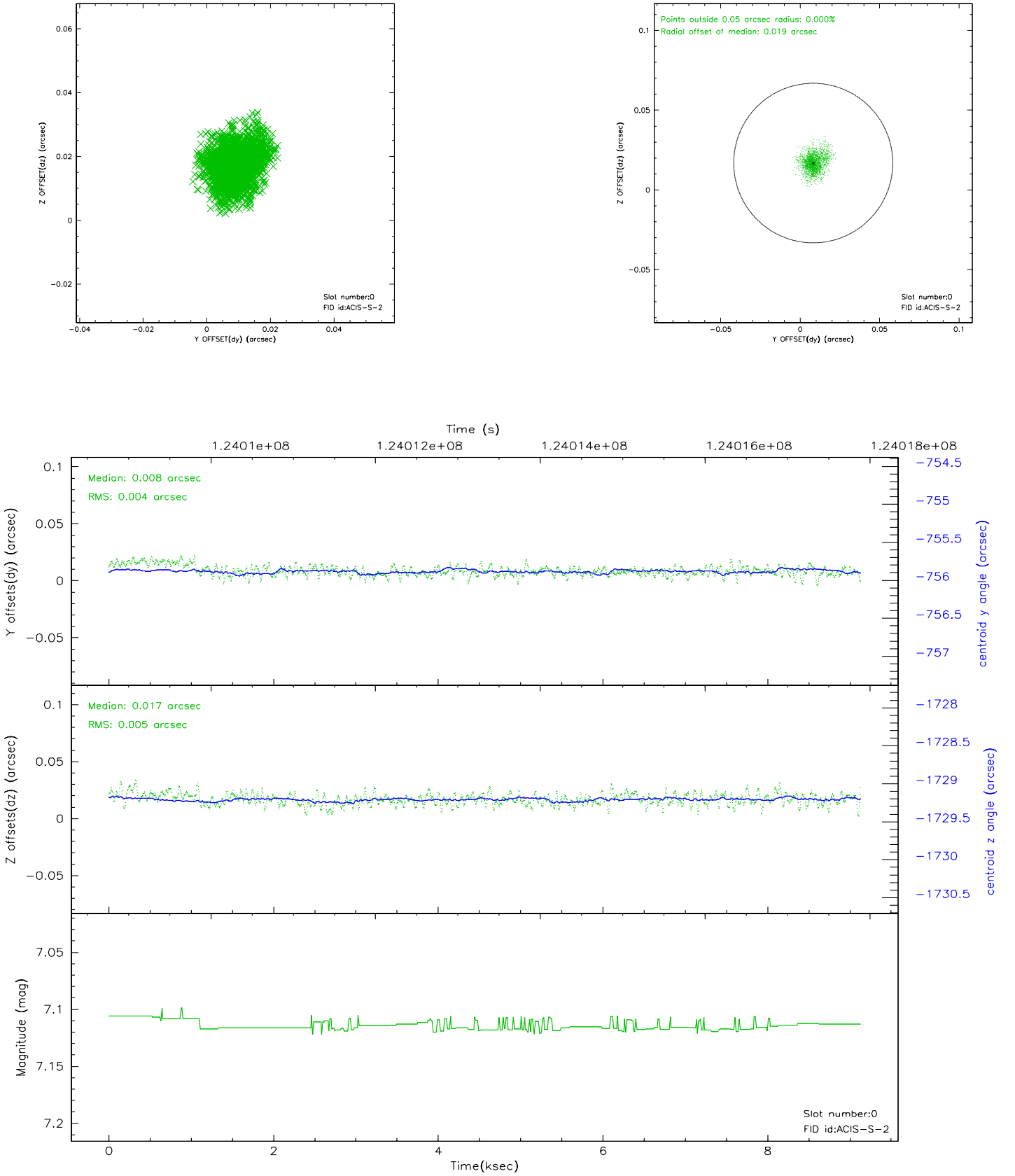


2.4.5 Slot 7

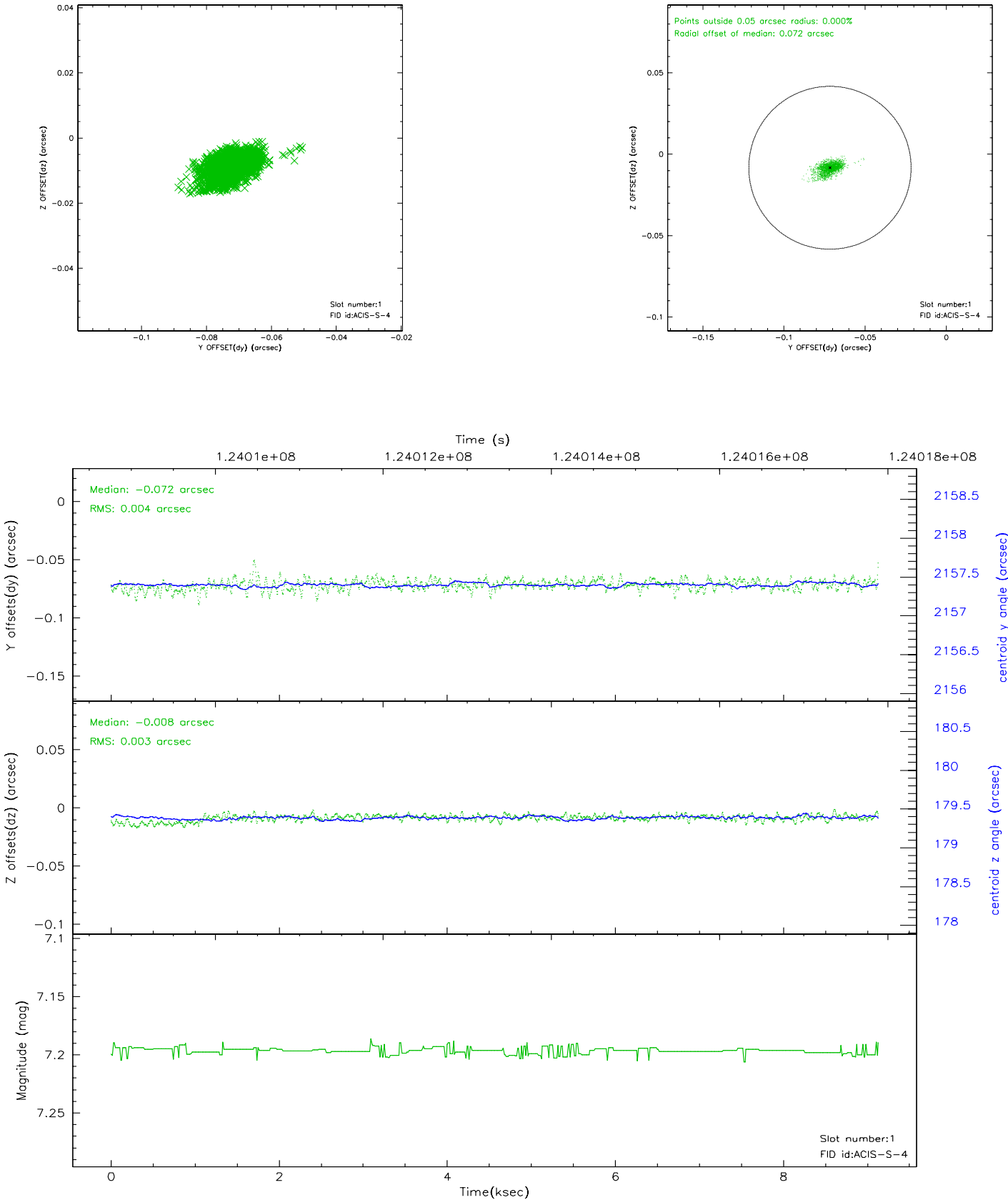


2.5 FID Slots

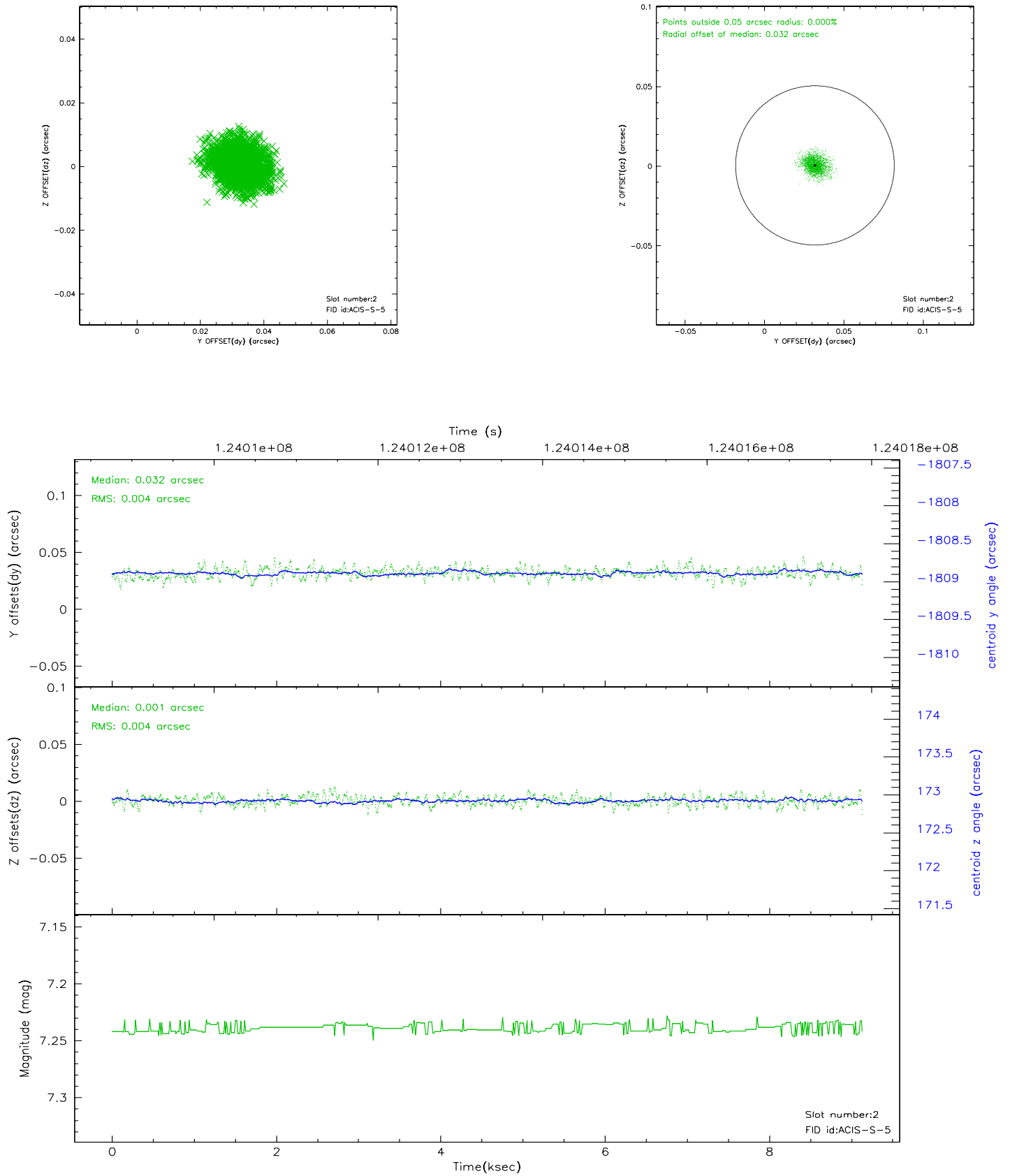
2.5.1 Slot 0



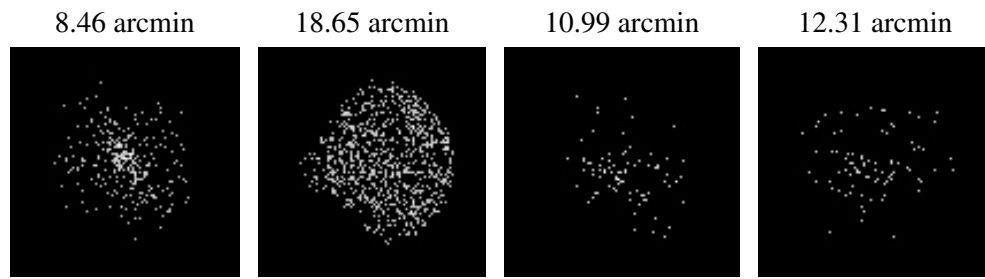
2.5.2 Slot 1



2.5.3 Slot 2



3 Point Sources



A Summary

A.1 Status

| | |
|----------------------------|---------------|
| V&V Scientist | Beth Sundheim |
| V&V Date (YYYY-MM-DD) | 2007.01.21 |
| V&V Edition | 1 |
| V&V Disposition and Status | OK |
| V&V Charge Time | 7.76 |

A.2 Comments