

V&V Reference Report

L2 ASCDS Version : 7.6.9

Observation 4288 - L2 Version 3
Chandra X-Ray Center

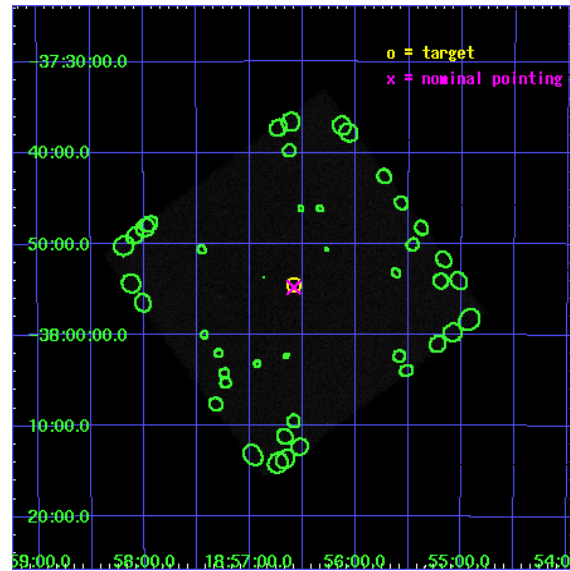
L2 Processing Date : Nov 21 2007

Contents

1	Front	2
2	OBI	3
2.1	OBI	3
2.1.1	Images	3
2.1.2	Parameters	4
2.1.3	Events	4
2.2	Compared Parameters	5
2.3	Aspect	6
2.4	Star Slots	9
2.4.1	Slot 3	9
2.4.2	Slot 4	10
2.4.3	Slot 5	11
2.4.4	Slot 6	12
2.4.5	Slot 7	13
2.5	FID Slots	14
2.5.1	Slot 0	14
2.5.2	Slot 1	15
2.5.3	Slot 2	16
3	Point Sources	17
A	Summary	18
A.1	Status	18
A.2	Comments	18

1 Front

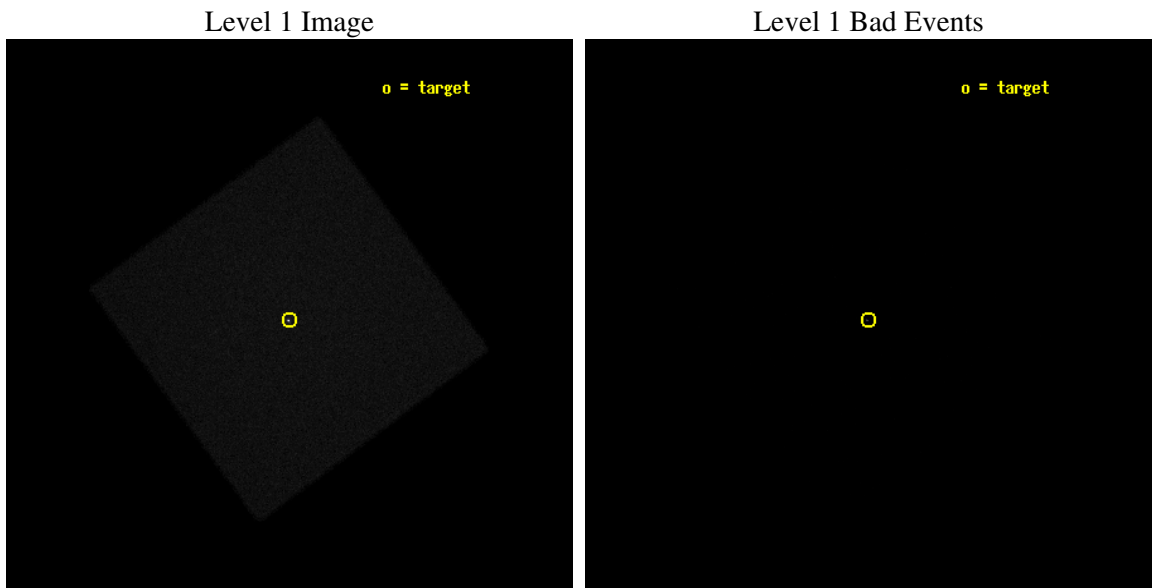
seq_num	490020
obs_id	4288
title	CALIBRATION OF ACIS PARTICLE BACKGROUND AND HRC QUANTUM EFFICIENCY
observer	Dr Maxim Markevitch
object	RXJ1856.5-3754
ra_targ	284.147083
dec_targ	-37.909611
ra_nom	284.14589891246
dec_nom	-37.913699807078
roll_nom	278.61781676608
revision	3
ontime	8469.8316005766
livetime	8416.9721400732
l2events	343667



2 OBI

2.1 OBI

2.1.1 Images



2.1.2 Parameters

obi_num	0
ascdsver	7.6.11.2
caldbver	3.4.1
date	2007-11-22T00:33:43
revision	3

sched_exp_time	8487.906000
ontime	8469.8316005766
l1events	494761

2.1.3 Events

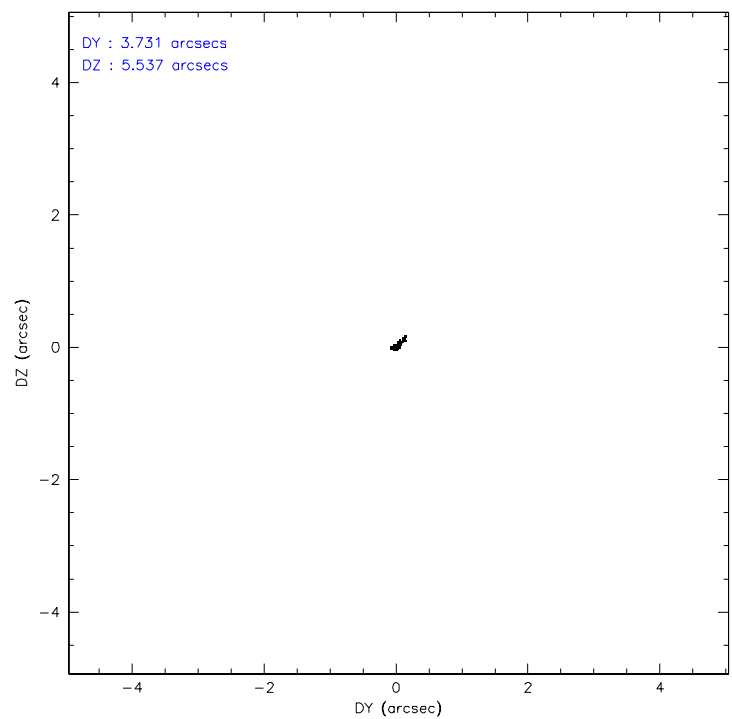
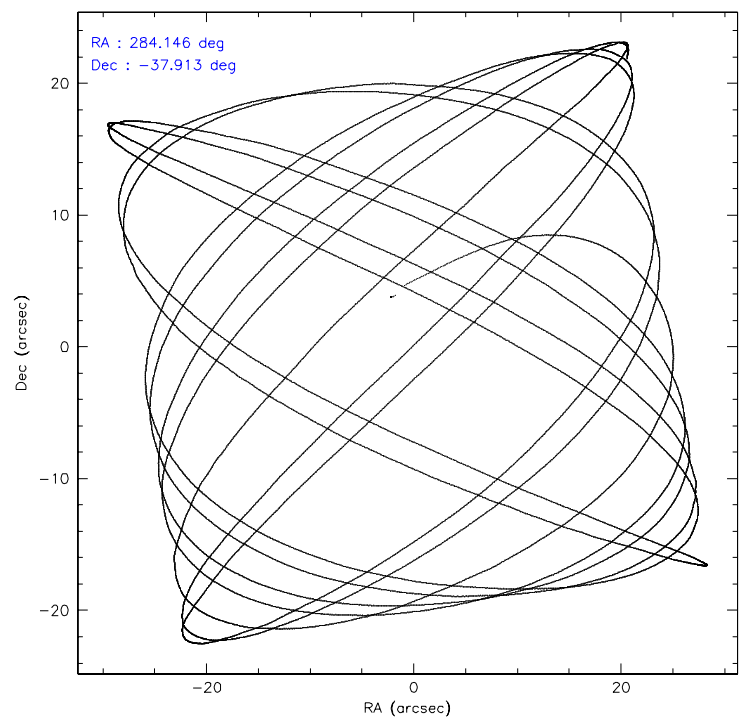
Level 1 Events

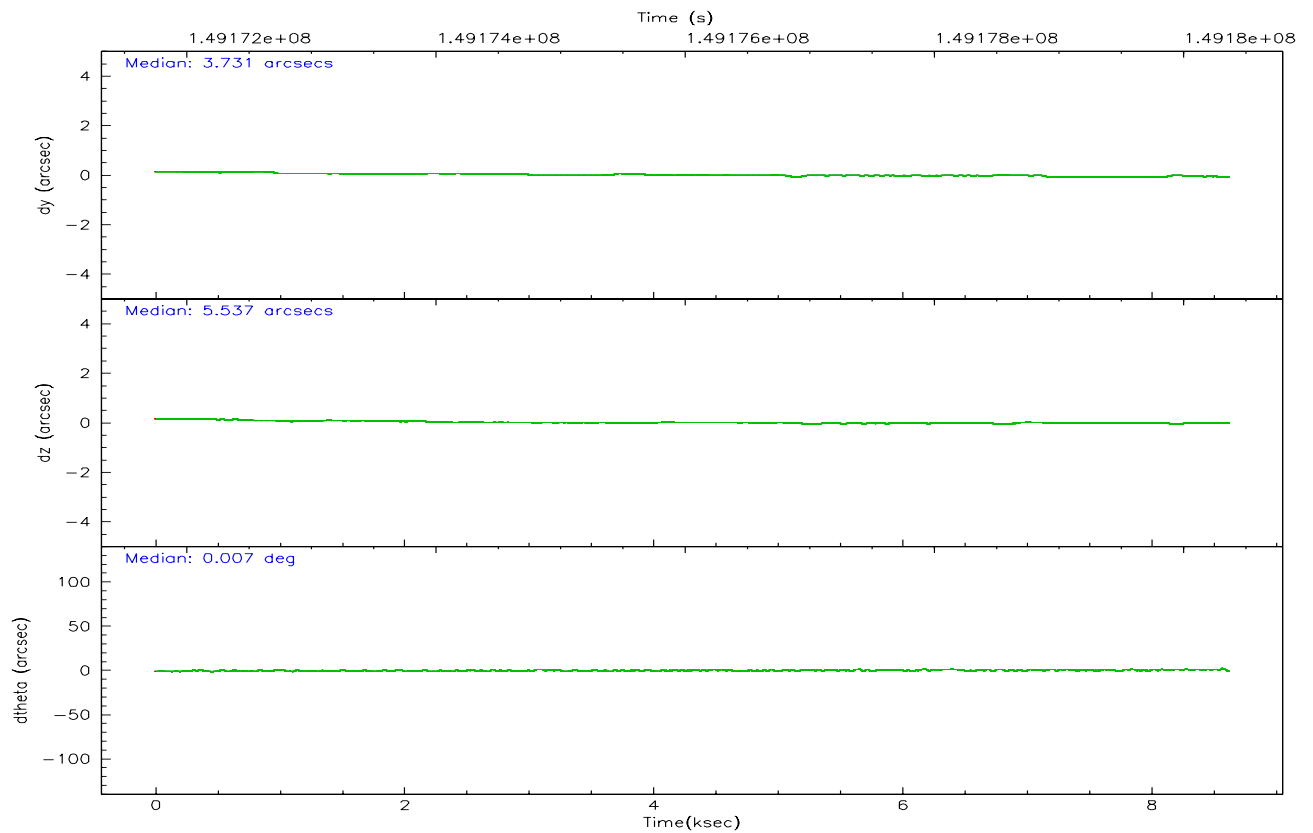
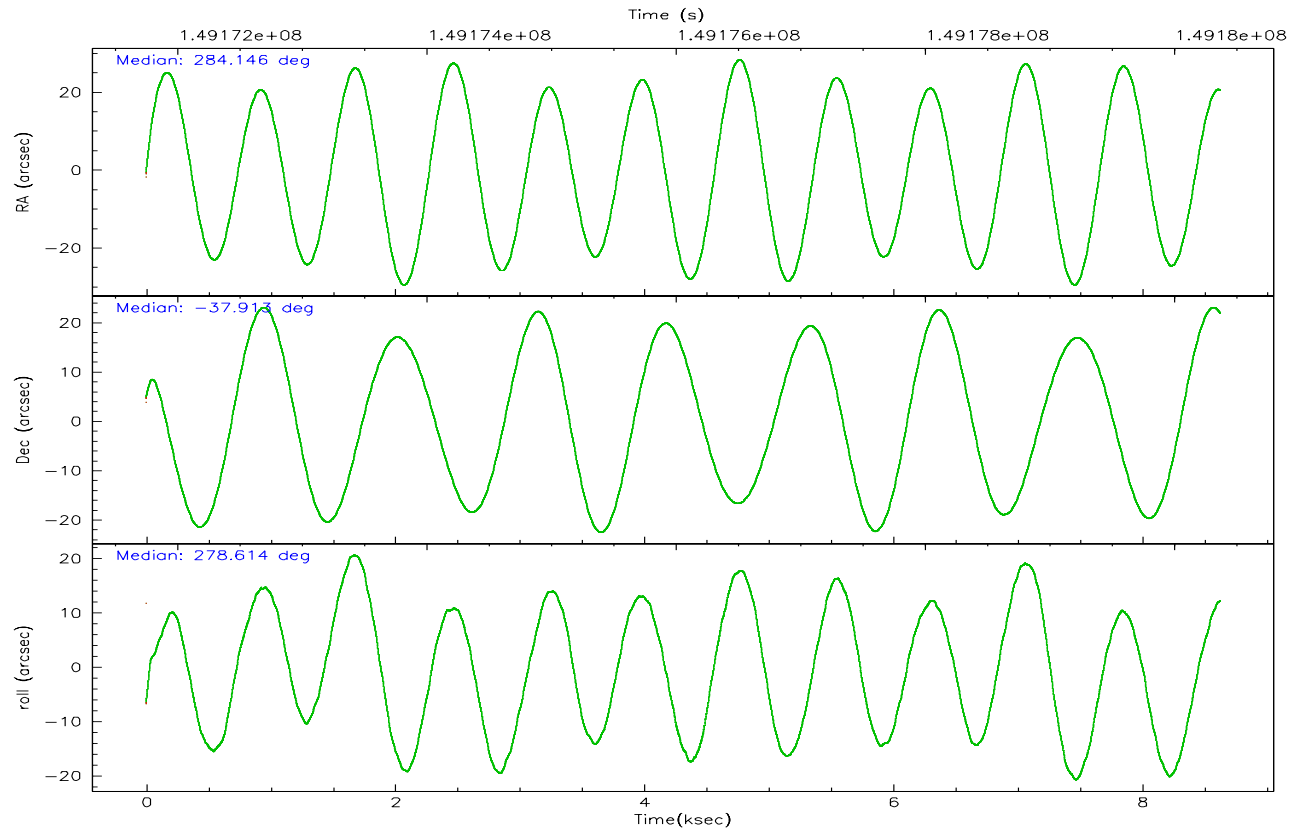
	segment 0
level 1 events	494761
rejected events	15553
rejected %	3%

2.2 Compared Parameters

Parameter	Planned	Actual	Parameter	Planned	Actual
Instrument	HRC	HRC	Obspar format version number	6	6
Detector	HRC-I	HRC-I	Obspar file type	PREDICTED	ACTUAL
Grating	NONE	NONE	Obspar update status	NONE	UPDATED
Data mode	OBSERVING	OBSERVING			
Observation mode	POINTING	POINTING			
Pointing RA	284.123752	284.1458989124629			
Pointing Dec	-37.892871	-37.91369980707825			
Pointing Roll	278.699702	278.6178167660795			
SIM focus pos (mm)	-1.040293	-1.038866356238299			
SIM defocus (mm)	0	0.001426264420575141			
SIM translation stage pos (mm)	126.985494	126.9829799899862			
SIM translation stage offset (mm)	0	0.002508901615314585			
Observation start time	149171879.184000	149170951.70973			
Observation start date	2002-09-23T12:36:55	2002-09-23T12:22:31			
Observation end time	149180367.184000	149180682.03514			
Observation end date	2002-09-23T14:58:23	2002-09-23T15:04:42			

2.3 Aspect



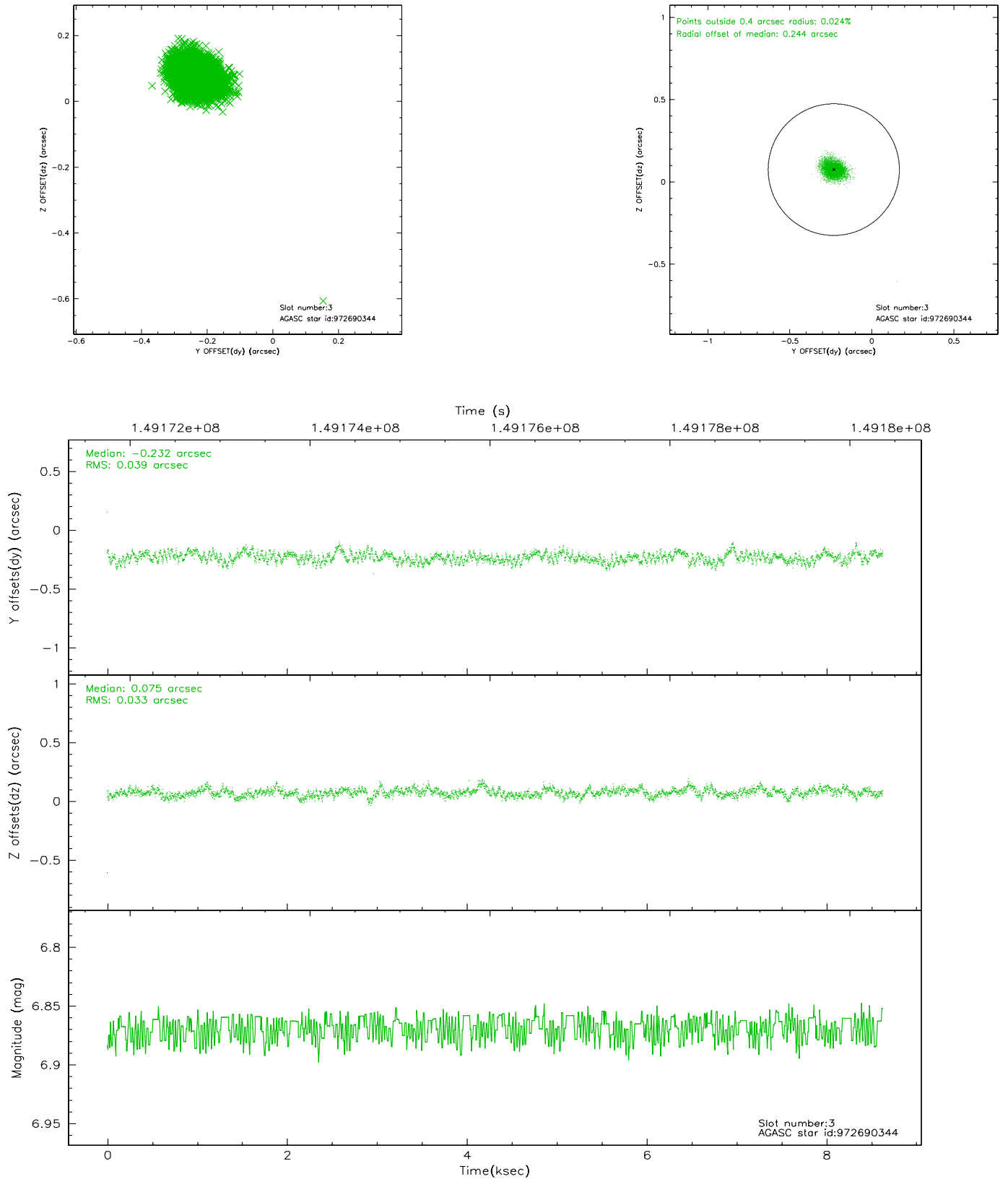


Slot Statistics

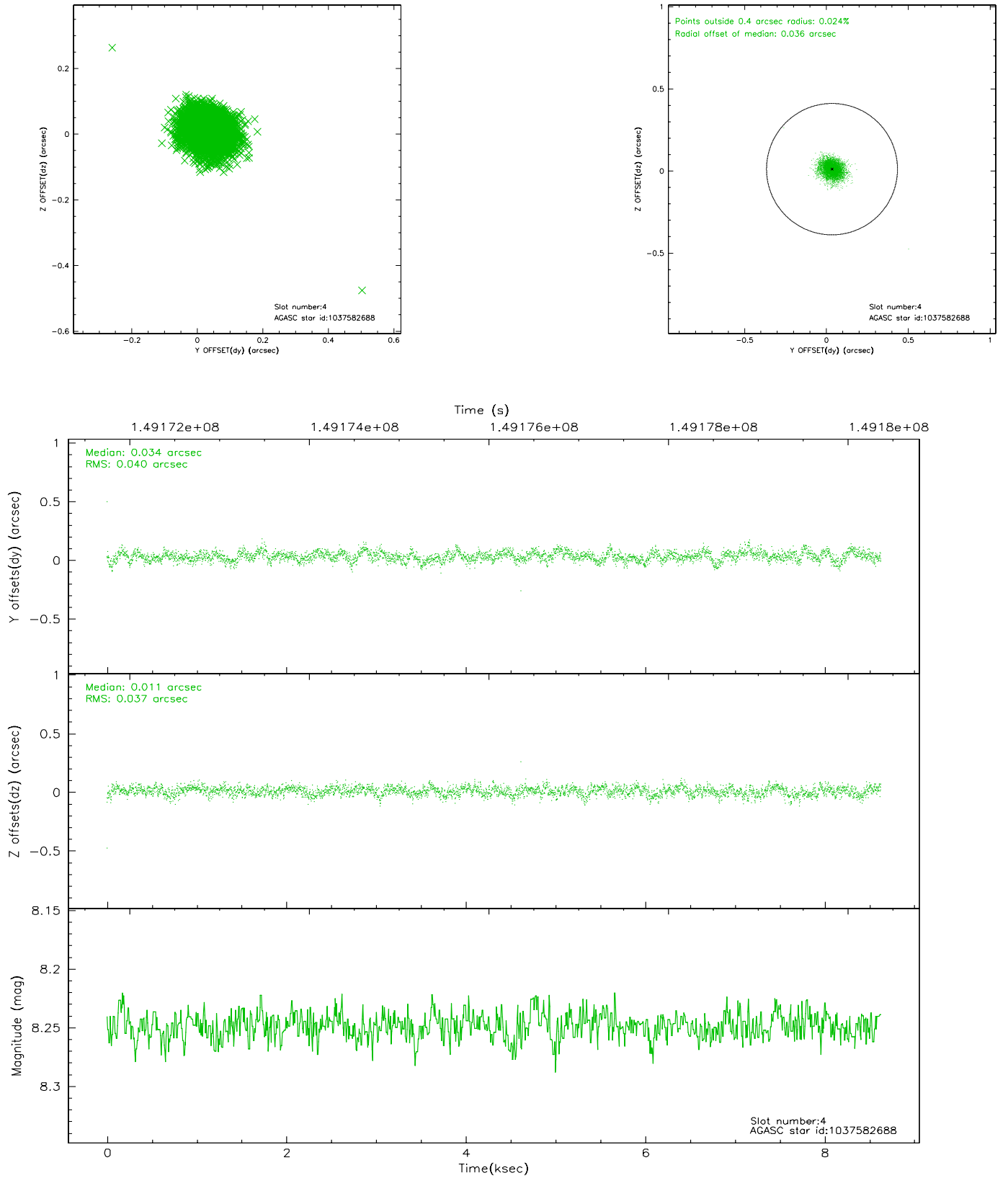
slot	status	id	mag	n_pts	med_dy	med_dz	dr1	dr2	ra	dec	mean_y	mean_z
0	FID	HRC-I-1	6.96	2105	-0.001	0.027	0.008	0.014	0.000000	0.000000	-759.20	-1293.36
1	FID	HRC-I-2	7.00	2105	0.081	-0.044	0.007	0.013	0.000000	0.000000	853.15	-1295.57
2	FID	HRC-I-3	7.05	2105	0.039	-0.072	0.007	0.012	0.000000	0.000000	-1187.31	1010.48
3	GUIDE	972690344	6.87	4210	-0.232	0.075	0.052	0.087	284.562162	-37.316991	-1855.34	1553.64
4	GUIDE	1037582688	8.25	4210	0.034	0.011	0.055	0.092	284.131110	-38.409051	1841.16	-260.23
5	GUIDE	1037581728	8.65	4207	0.227	-0.168	0.098	0.152	283.813802	-38.579091	2313.78	-1236.44
6	GUIDE	1037569240	9.53	4204	-0.258	-0.150	0.099	0.161	283.536783	-37.688368	-973.56	-1543.07
7	GUIDE	1037574184	9.60	4207	0.231	0.229	0.119	0.198	284.929729	-38.472831	2418.65	1928.13

2.4 Star Slots

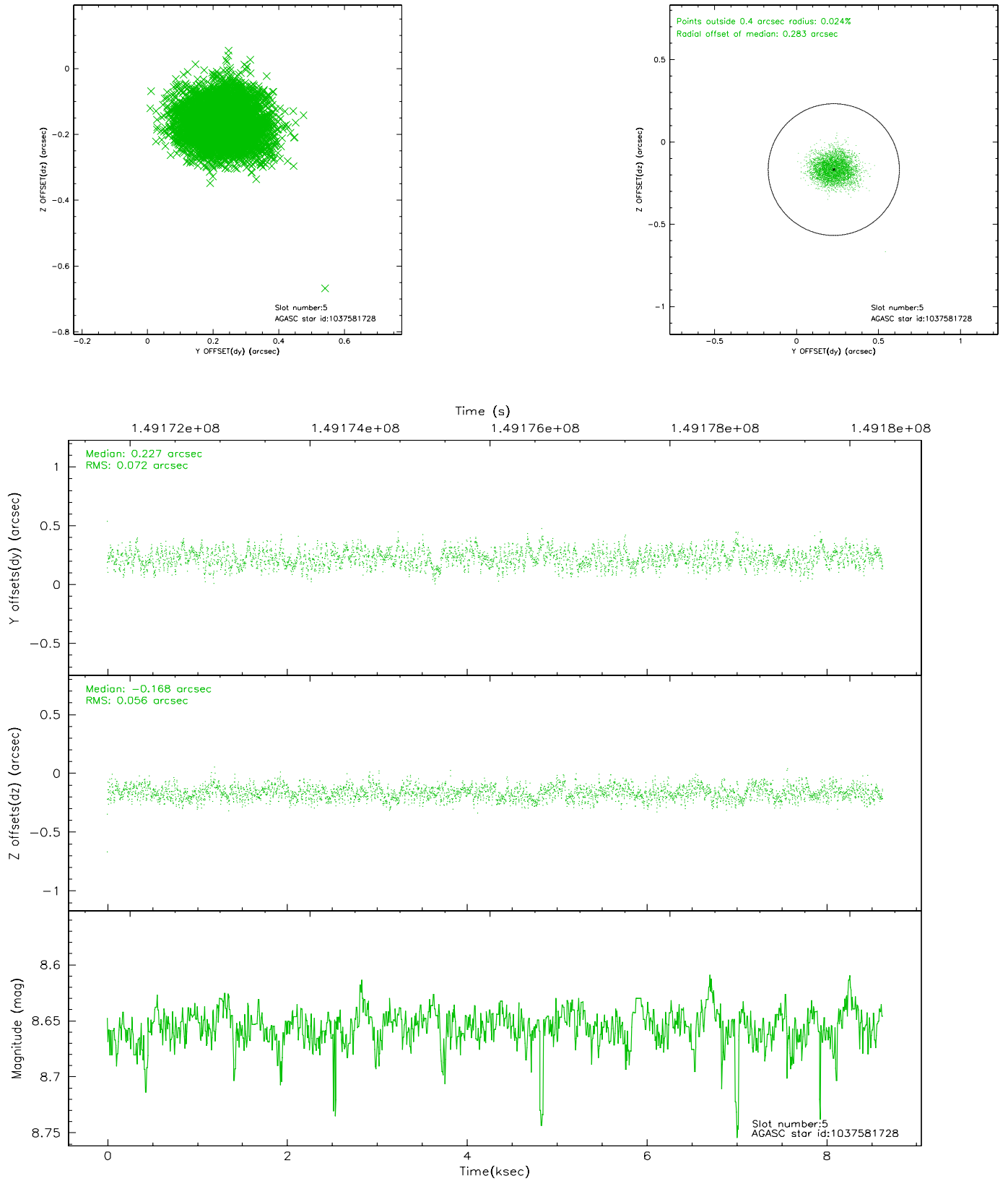
2.4.1 Slot 3



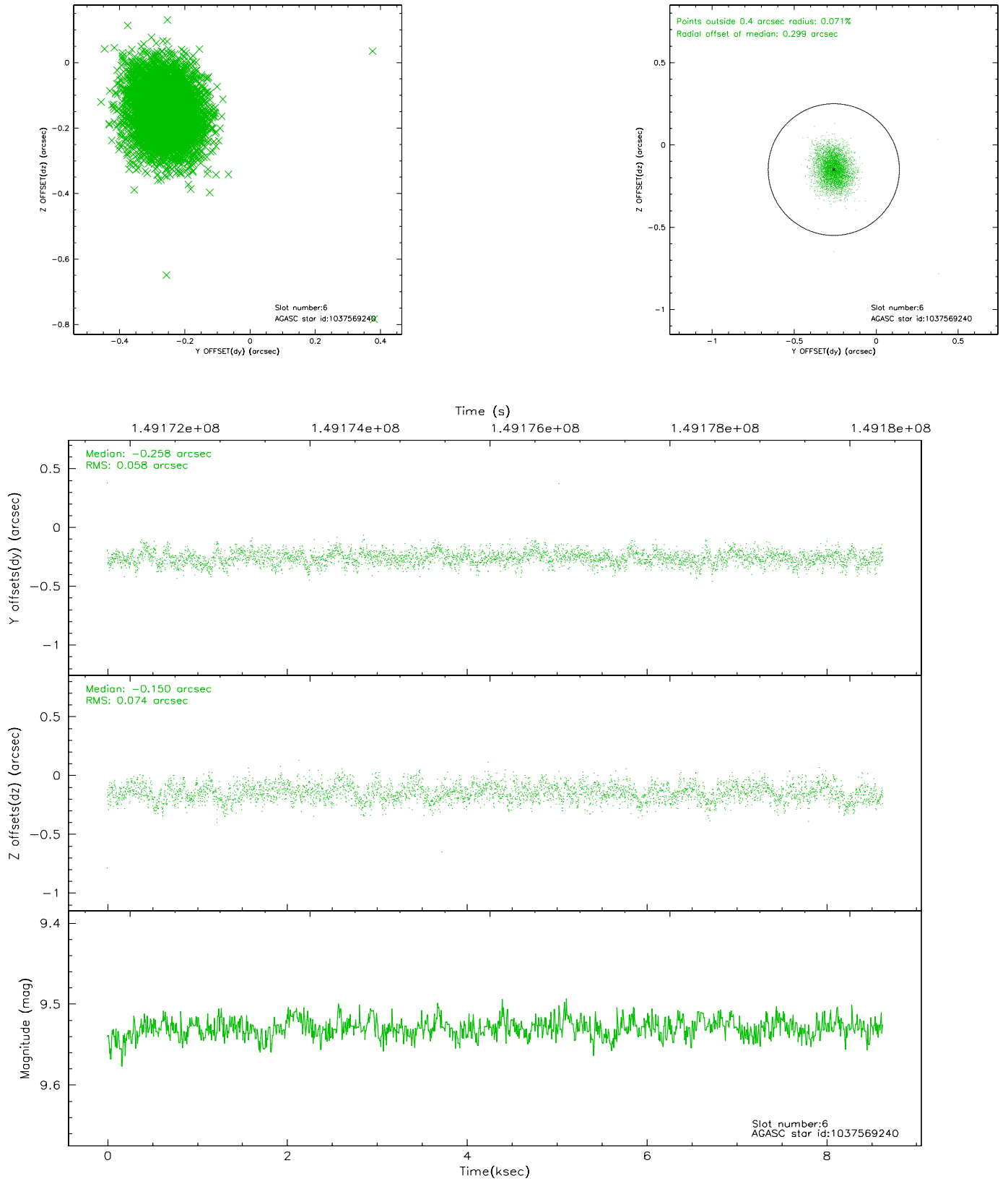
2.4.2 Slot 4



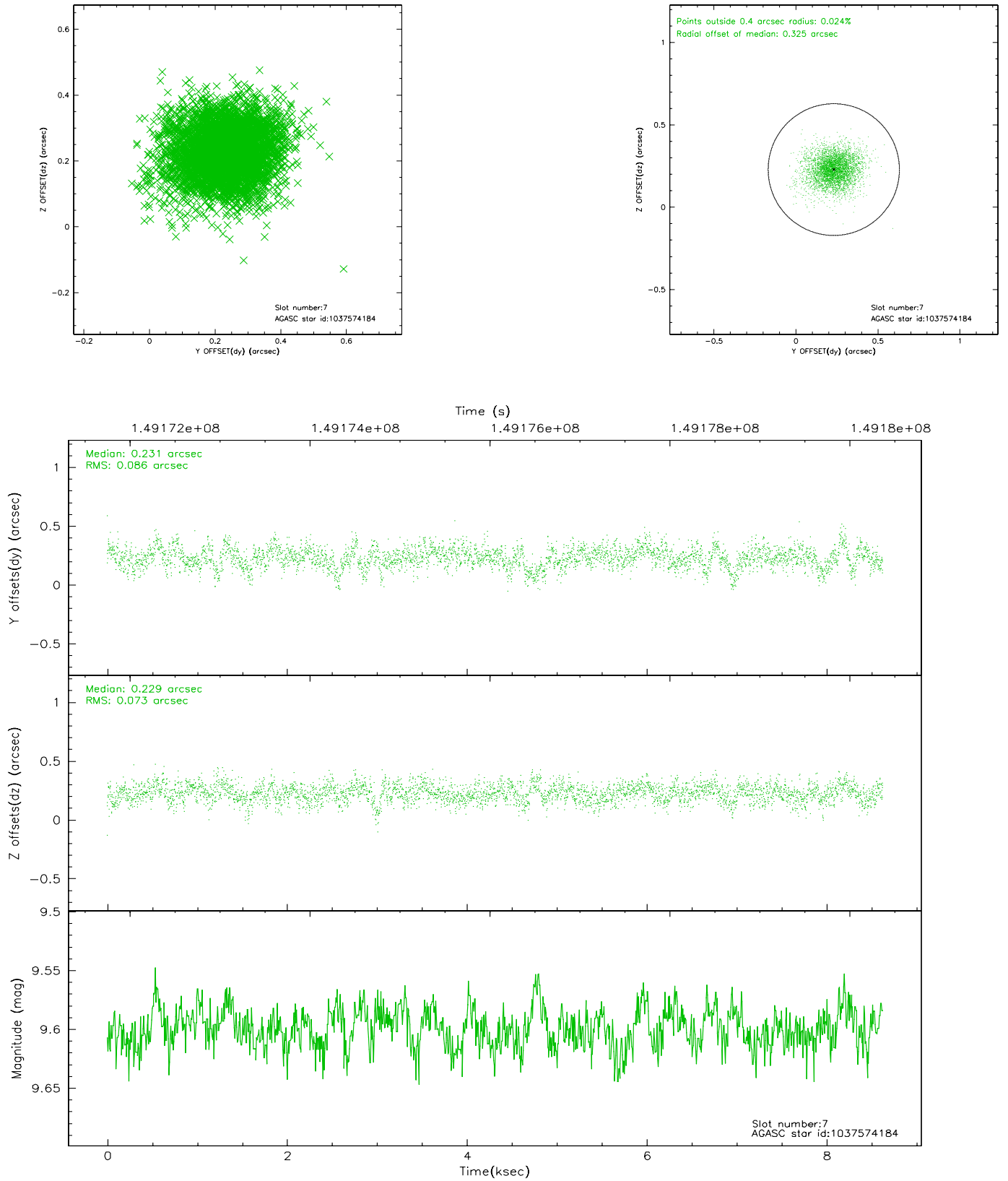
2.4.3 Slot 5



2.4.4 Slot 6

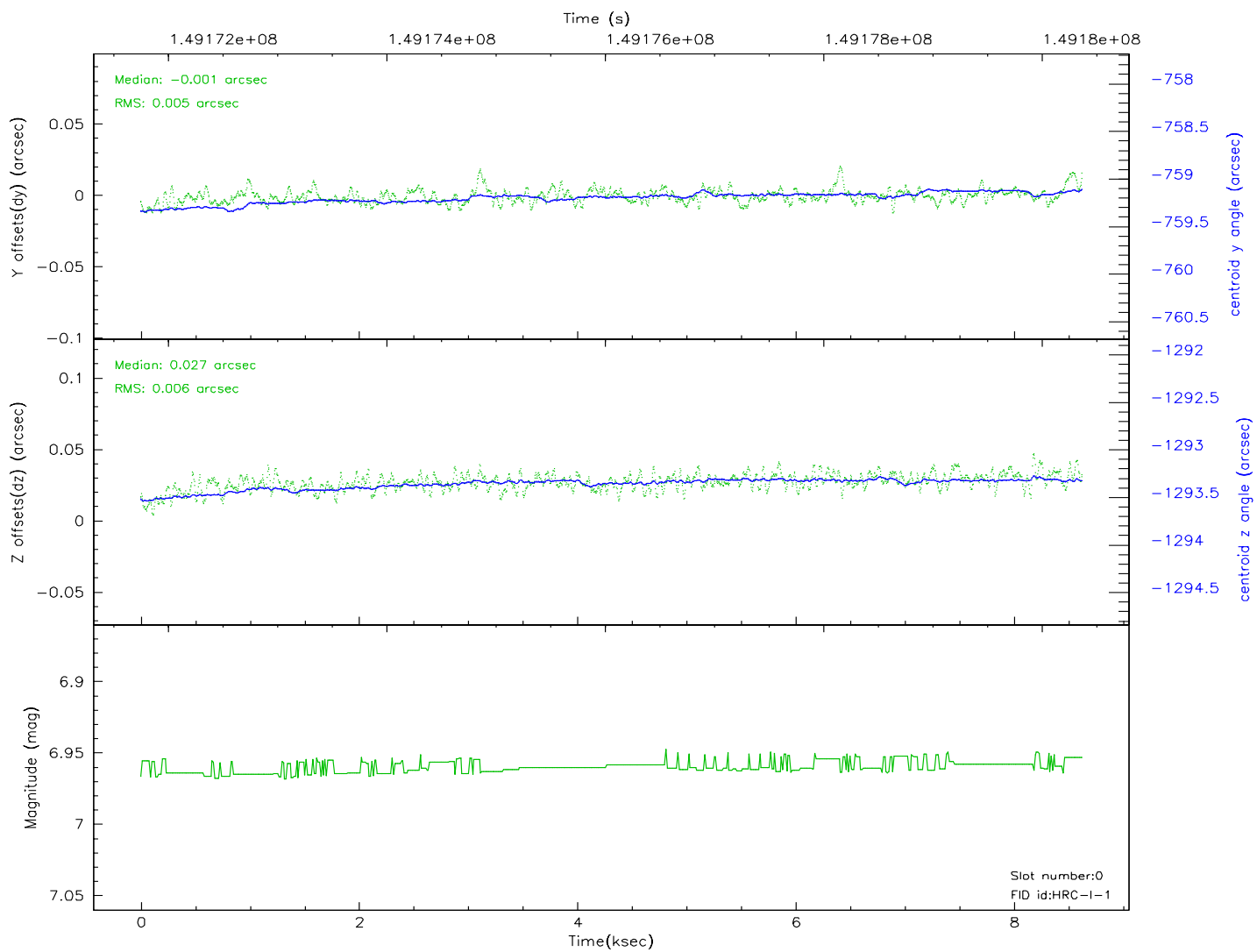
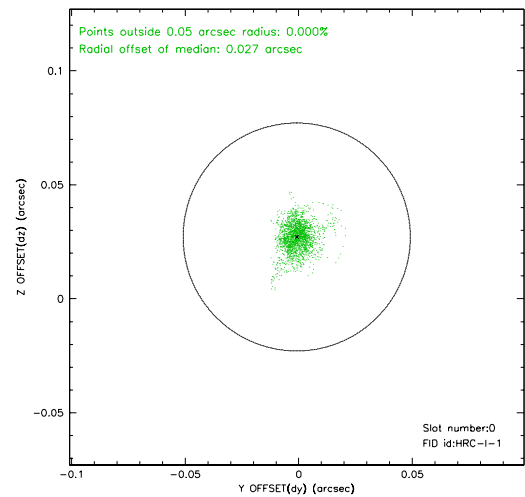
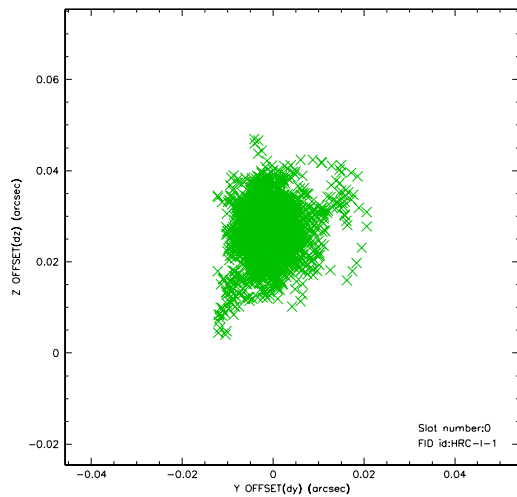


2.4.5 Slot 7

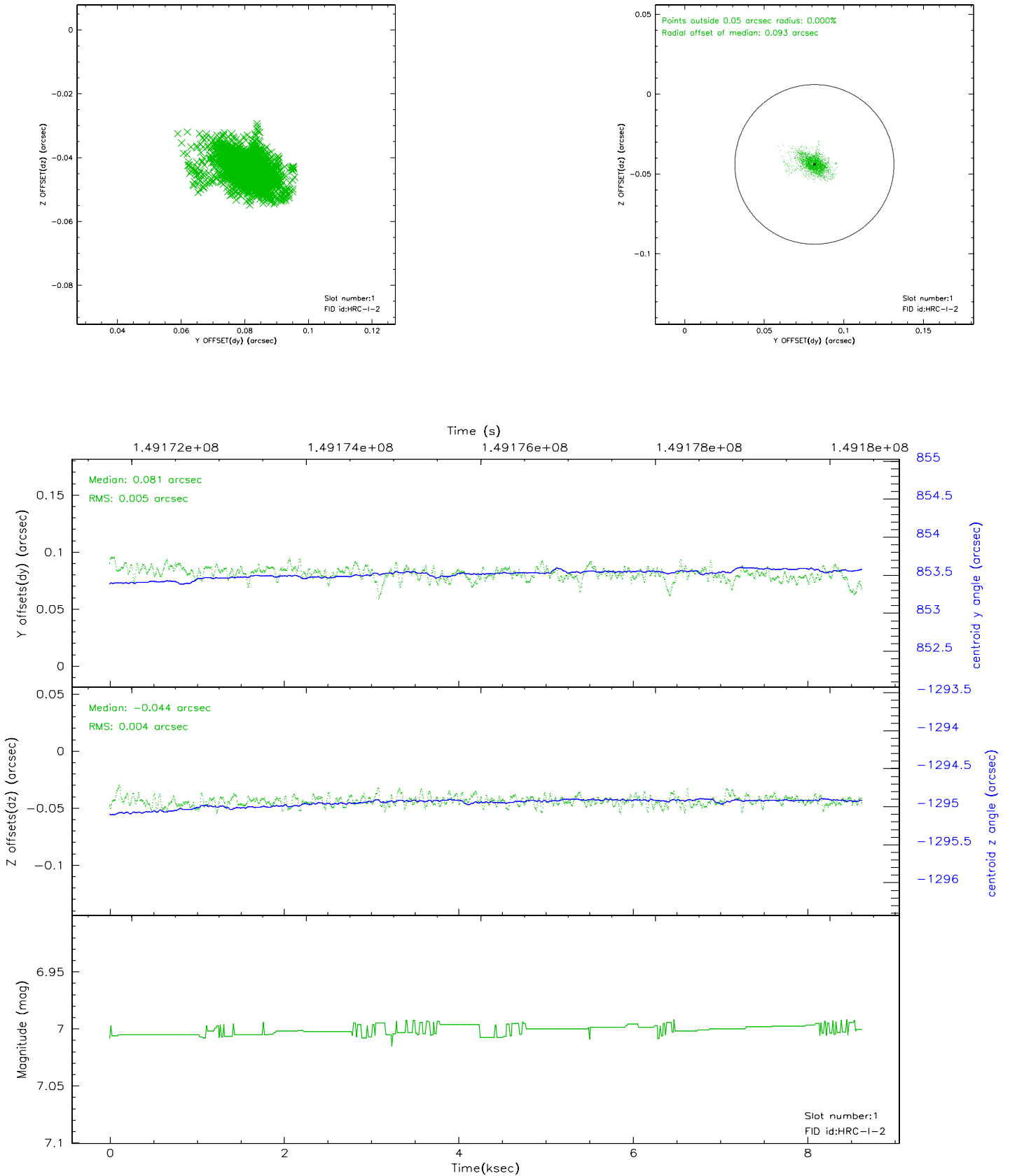


2.5 FID Slots

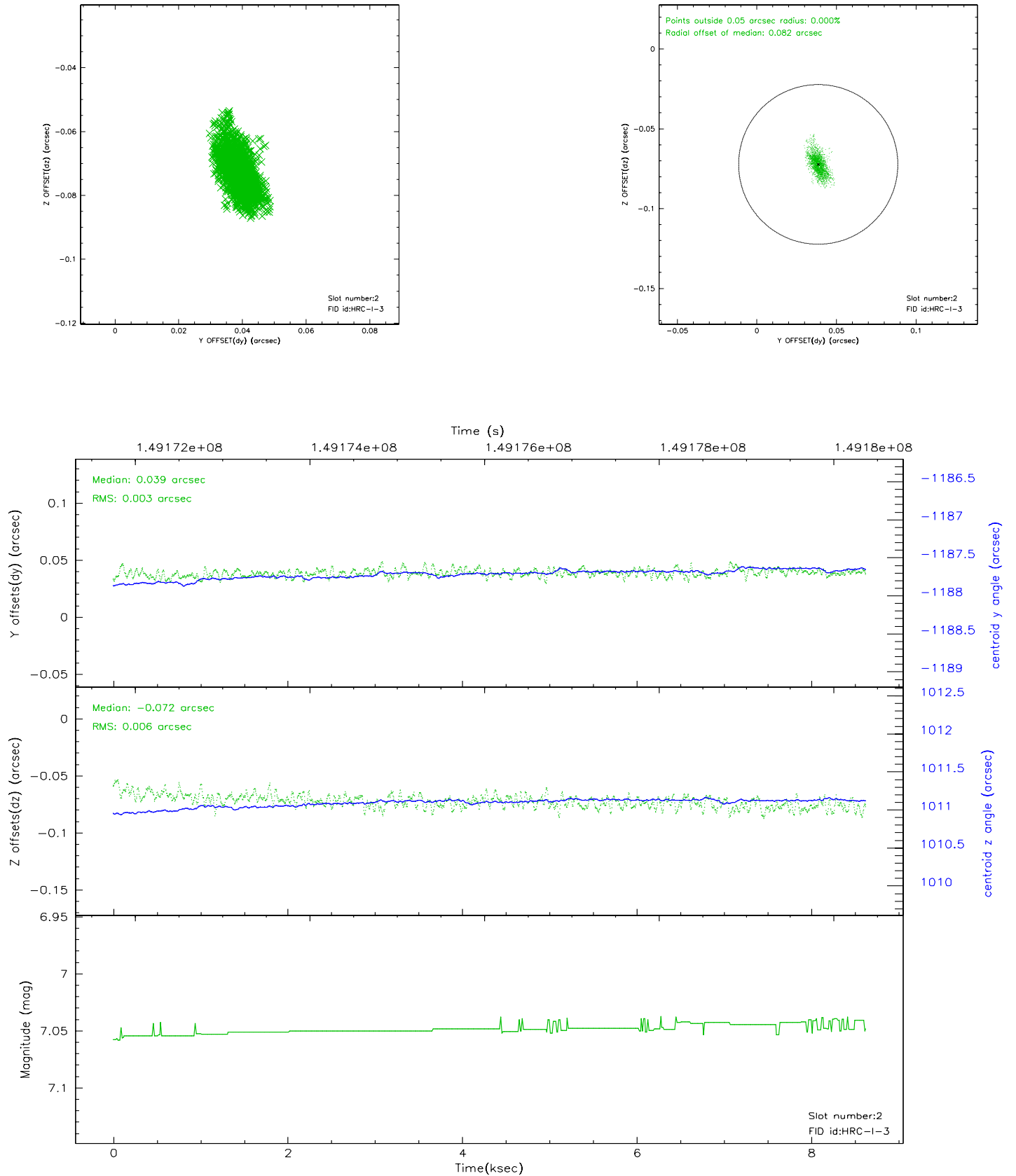
2.5.1 Slot 0



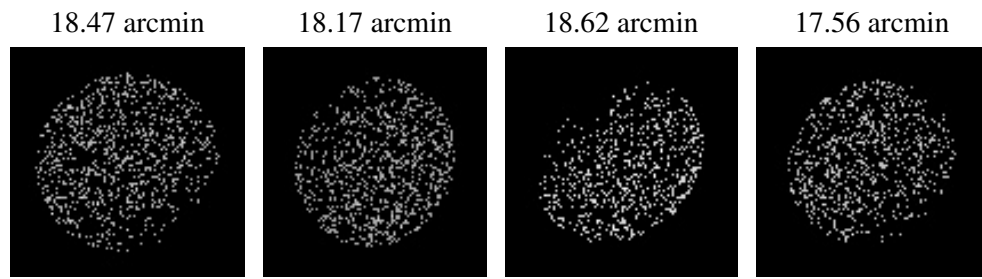
2.5.2 Slot 1



2.5.3 Slot 2



3 Point Sources



A Summary

A.1 Status

V&V Scientist	Jen Lauer
V&V Date (YYYY-MM-DD)	2007.12.04
V&V Edition	1
V&V Disposition and Status	OK
V&V Charge Time	8.469

A.2 Comments

The current observation has been reprocessed as part of Repro III ('C' supplement) the purpose of which is to update all HRC-I ObsIDs since Jan 2000 to the latest calibrations available for that configuration. Specifically, we are updating the DEGAP solution and the Gain Maps applied. For more information see the Repro IIIC web page at

<http://asc.harvard.edu/cda/repro3.html#IIIC>

and the associated links.