

V&V Reference Report

L2 ASCDS Version : 7.6.10

Observation 2599 - L2 Version 001
Chandra X-Ray Center

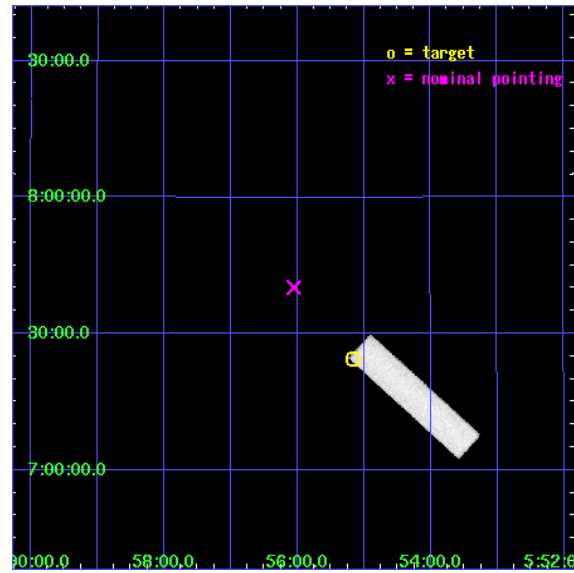
L2 Processing Date : Jan 20 2007

Contents

1	Front	2
2	OBI	3
2.1	OBI	3
2.1.1	Images	3
2.1.2	Parameters	4
2.1.3	Events	4
2.2	Compared Parameters	5
2.3	Aspect	6
2.4	Star Slots	9
2.4.1	Slot 3	9
2.4.2	Slot 4	10
2.4.3	Slot 5	11
2.4.4	Slot 6	12
2.4.5	Slot 7	13
2.5	FID Slots	14
2.5.1	Slot 0	14
2.5.2	Slot 1	15
2.5.3	Slot 2	16
3	Point Sources	17
A	Summary	18
A.1	Status	18
A.2	Comments	18

1 Front

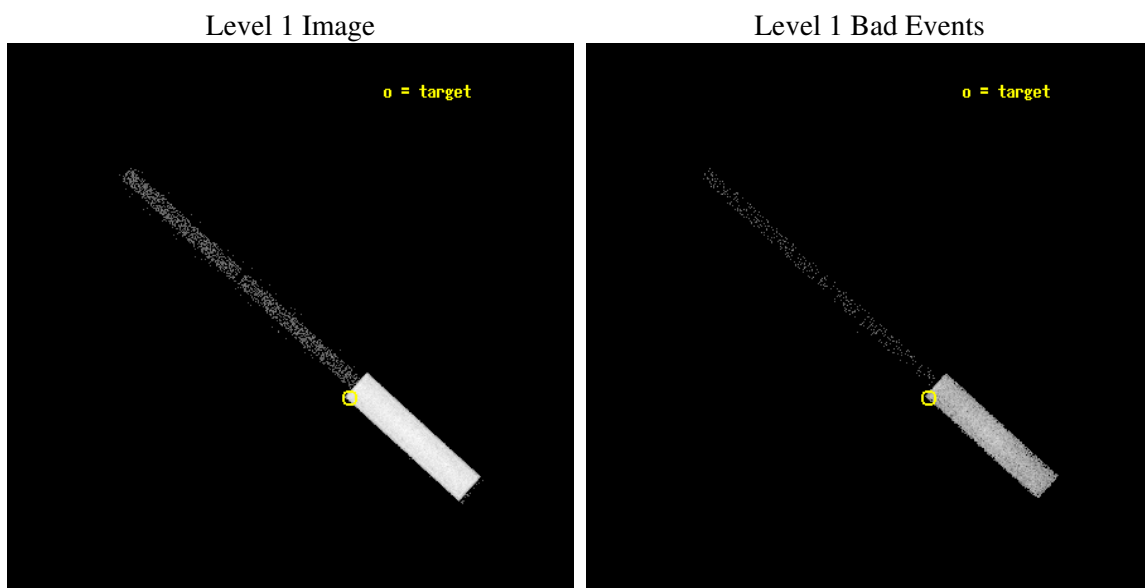
seq_num	290155
obs_id	2599
title	AO3 CALIBRATION OBSERVATIONS OF BETELGEUSE
observer	Dr. CXC Calibration
object	BETELGEUSE
ra_targ	88.792917
dec_targ	7.407056
ra_nom	89.013093672546
dec_nom	7.6699296068201
roll_nom	41.999413756948
revision	2
ontime	2143.5313358009
livetime	2132.8181170592
l2events	75917



2 OBI

2.1 OBI

2.1.1 Images



2.1.2 Parameters

obi_num	1
ascdsver	7.6.10
caldbver	3.3.0
date	2007-01-20T14:06:28
revision	2

sched_exp_time	2000.000000
ontime	2143.5313358009
l1events	120394

2.1.3 Events

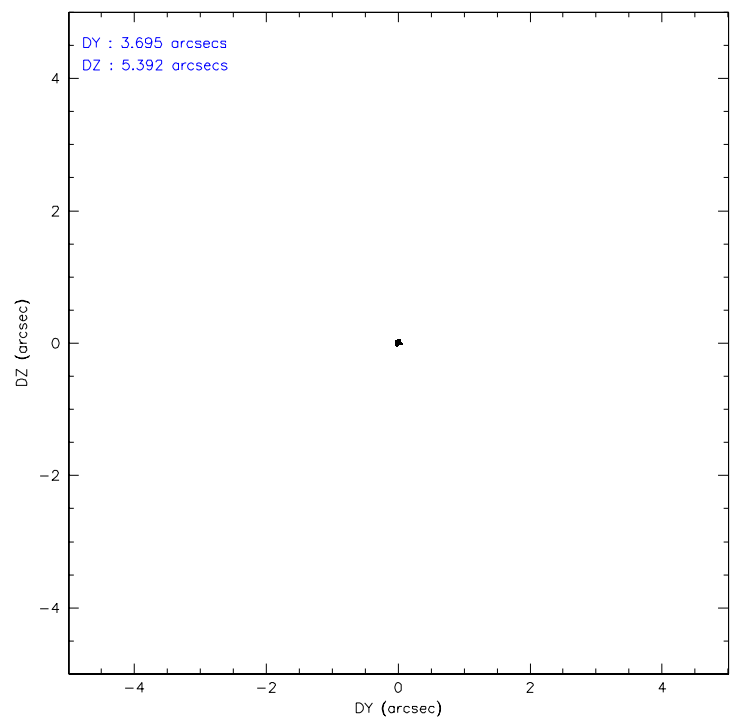
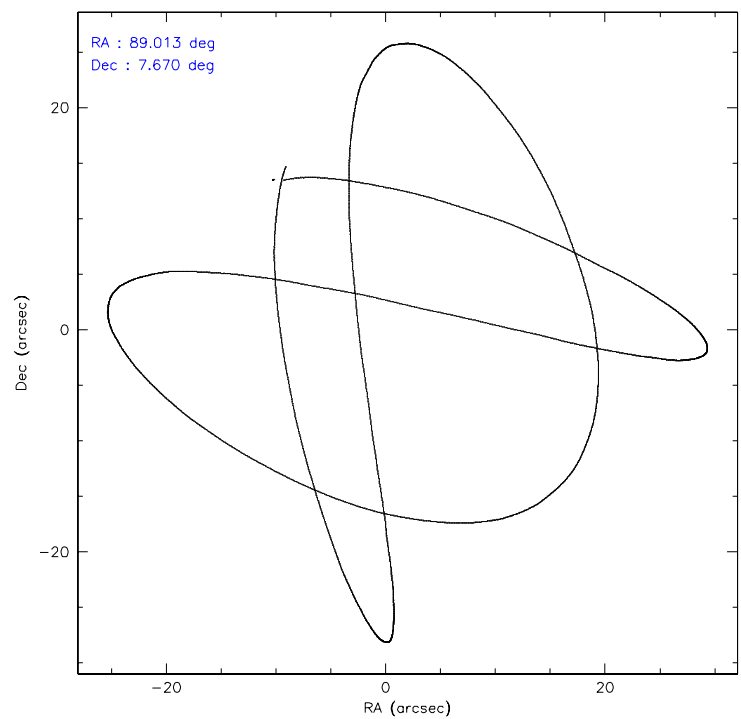
Level 1 Events

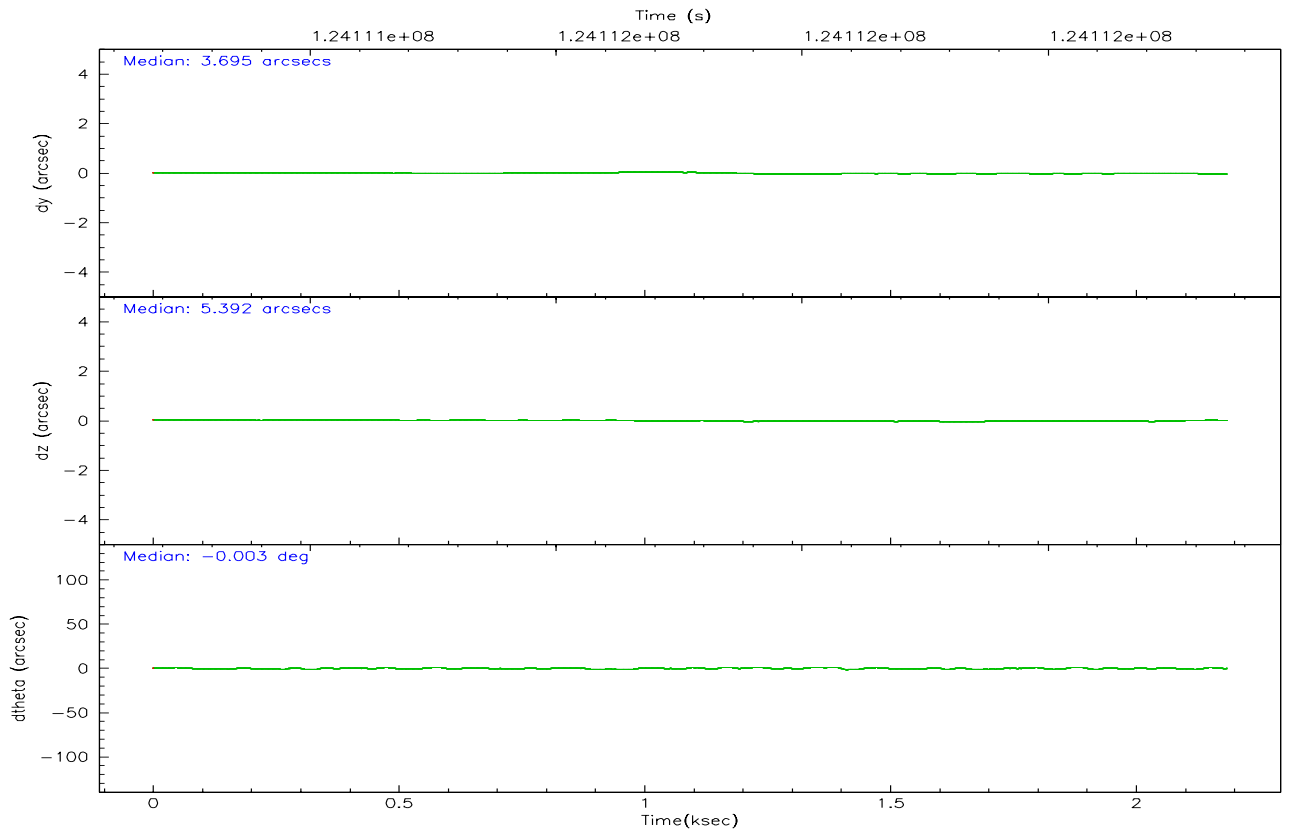
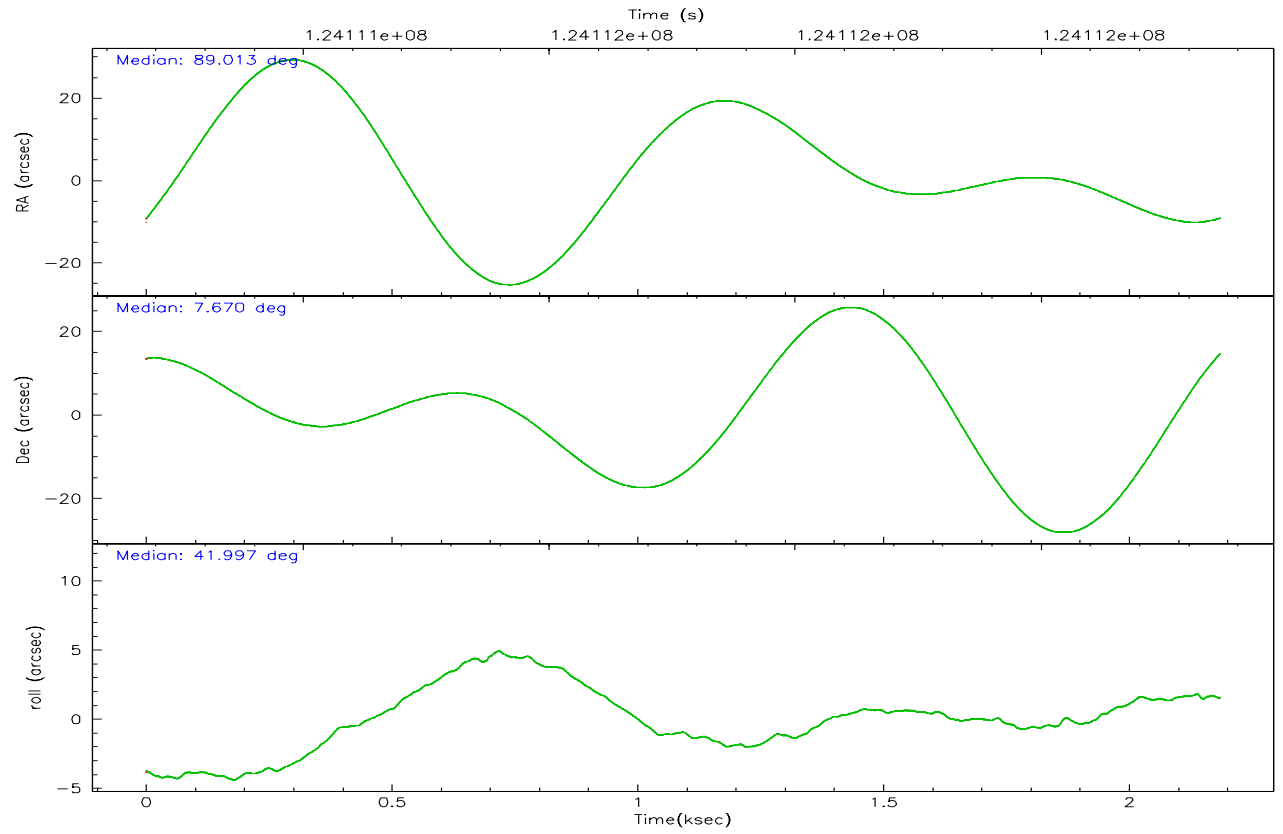
	segment 1	segment 2	segment 3
level 1 events	118064	1131	1199
rejected events	33735	1106	1199
rejected %	28%	97%	100%

2.2 Compared Parameters

Parameter	Planned	Actual	Parameter	Planned	Actual
Instrument	HRC	HRC	Obspar format version number	6	6
Detector	HRC-S	HRC-S	Obspar file type	PREDICTED	ACTUAL
Grating	NONE	NONE	Obspar update status	NONE	UPDATED
Data mode	OBSERVING	OBSERVING			
Observation mode	POINTING	POINTING			
Pointing RA	89.005343	89.01309367254574			
Pointing Dec	7.642481	7.669929606820089			
Pointing Roll	41.933099	41.99941375694798			
Window start time	123552064.184000	123552064.184000			
Window stop time	126144064.184000	126144064.184000			
SIM focus pos (mm)	-1.429586	-1.428180813131781			
SIM defocus (mm)	0.1037507710433287	0.1051558262725154			
SIM translation stage pos (mm)	250.455976	250.466033080201			
SIM translation stage offset (mm)	0	-0.01005468664627074			
Observation start time	124110865.184000	124110489.42688			
Observation start date	2001-12-07T11:13:21	2001-12-07T11:08:09			
Observation end time	124112865.184000	124113035.52698			
Observation end date	2001-12-07T11:46:41	2001-12-07T11:50:35			

2.3 Aspect



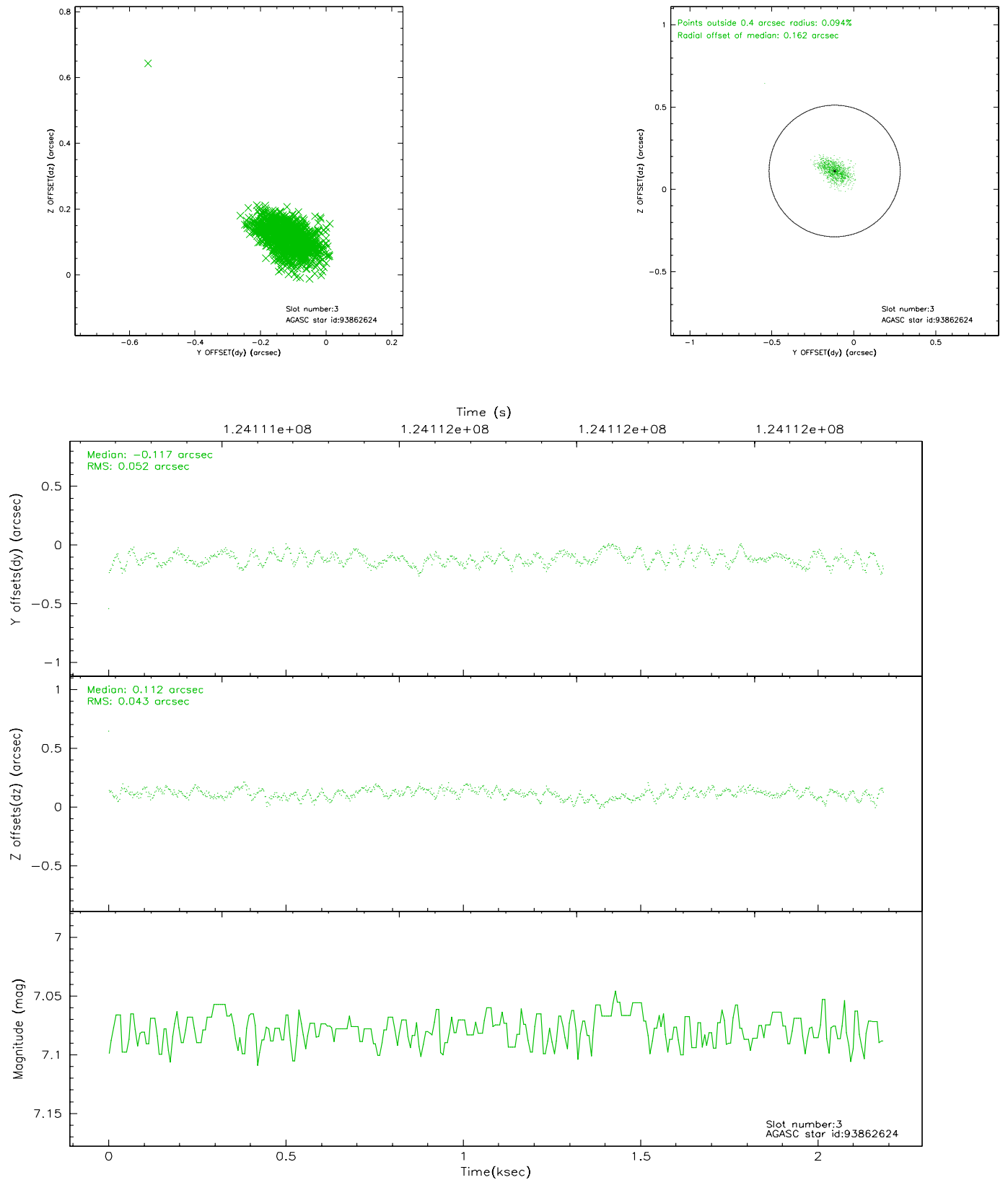


Slot Statistics

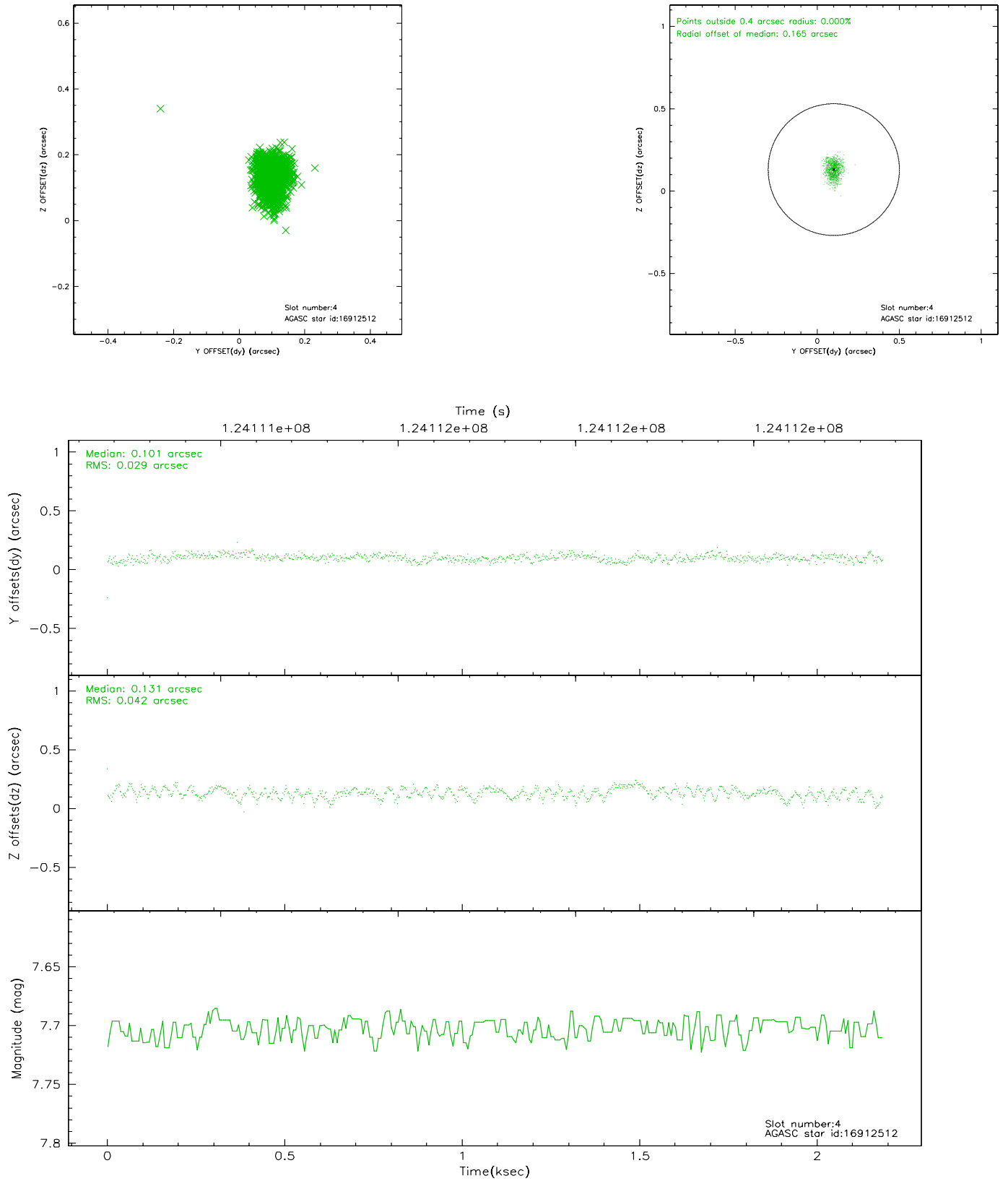
slot	status	id	mag	n_pts	med_dy	med_dz	dr1	dr2	ra	dec	mean_y	mean_z
0	FID	HRC-S-1	6.99	533	0.164	-0.168	0.006	0.011	0.000000	0.000000	-1157.73	-453.94
1	FID	HRC-S-2	6.98	534	0.080	-0.094	0.005	0.010	0.000000	0.000000	1239.70	-447.37
2	FID	HRC-S-3	7.01	534	0.146	-0.040	0.006	0.010	0.000000	0.000000	-1158.14	574.88
3	GUIDE	93862624	7.08	1067	-0.117	0.112	0.069	0.112	89.614911	7.860553	2143.39	-865.64
4	GUIDE	16912512	7.70	1067	0.101	0.131	0.052	0.085	88.651510	7.129862	-2170.44	-526.95
5	GUIDE	93854800	7.58	1065	0.078	-0.125	0.058	0.094	88.376308	7.655454	-1638.85	1536.70
6	GUIDE	93862944	8.14	1067	-0.095	0.115	0.064	0.106	89.630914	7.938807	2372.31	-692.45
7	GUIDE	93855712	8.86	1066	0.033	-0.235	0.101	0.155	88.684908	8.226237	558.02	2327.49

2.4 Star Slots

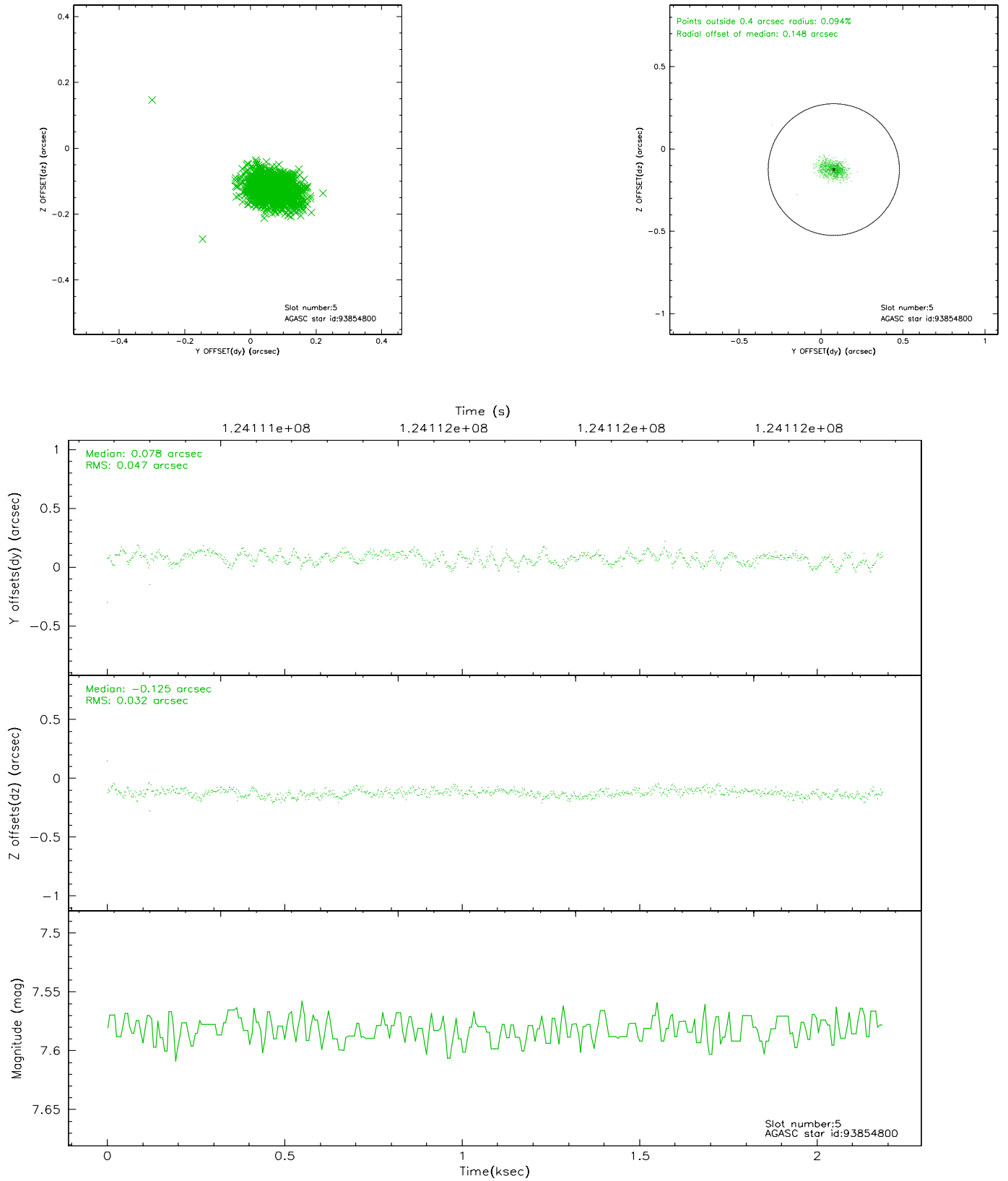
2.4.1 Slot 3



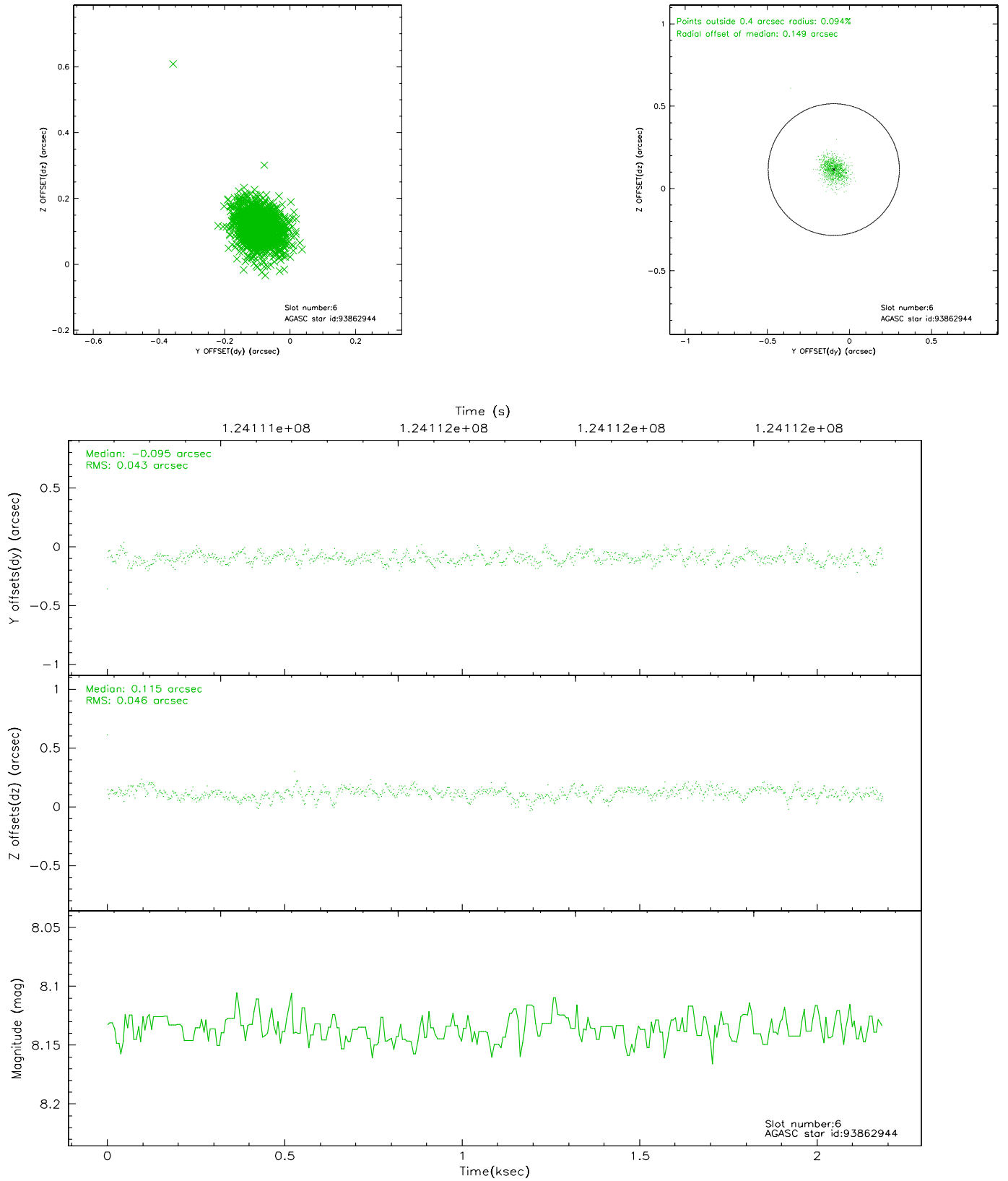
2.4.2 Slot 4



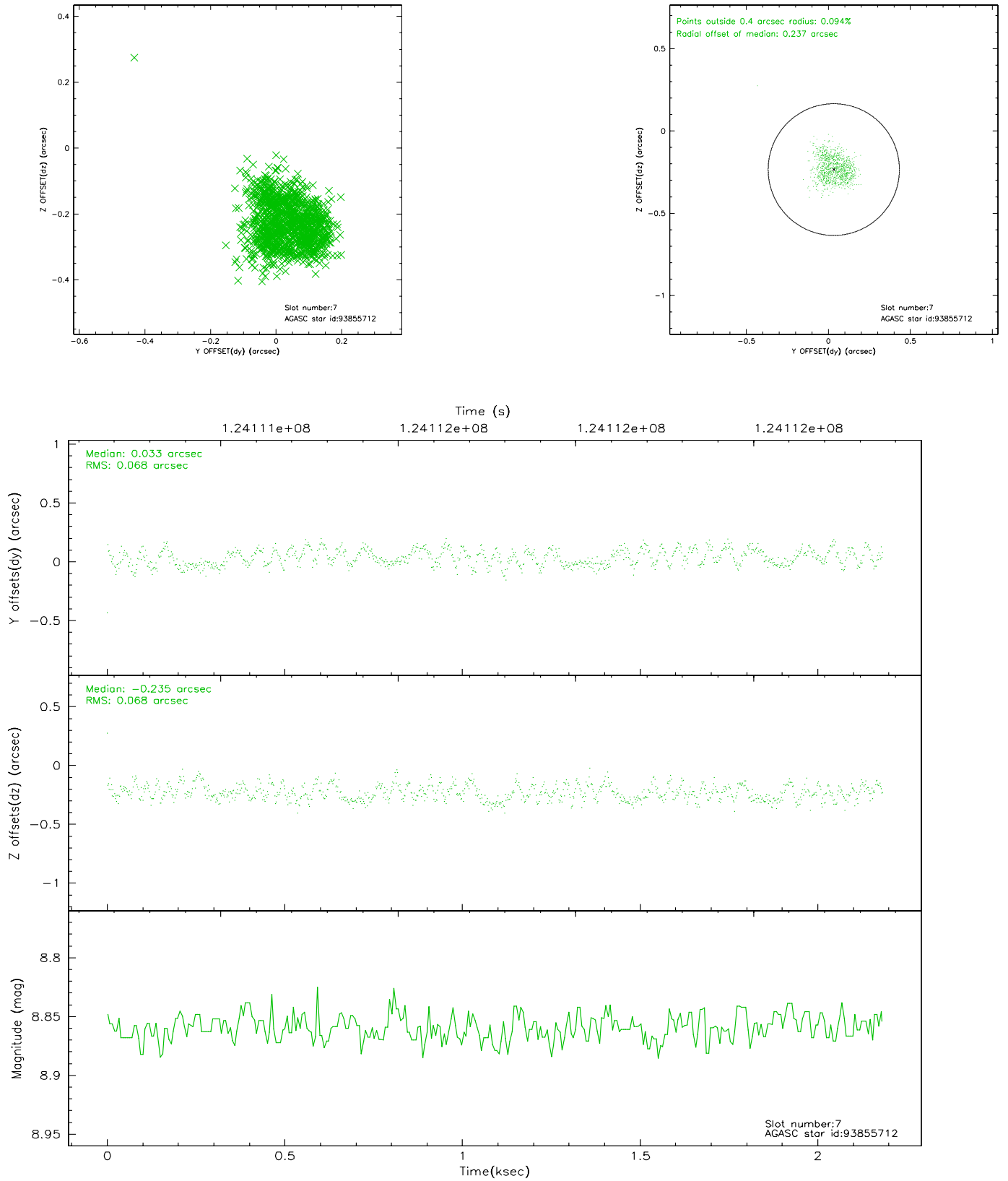
2.4.3 Slot 5



2.4.4 Slot 6

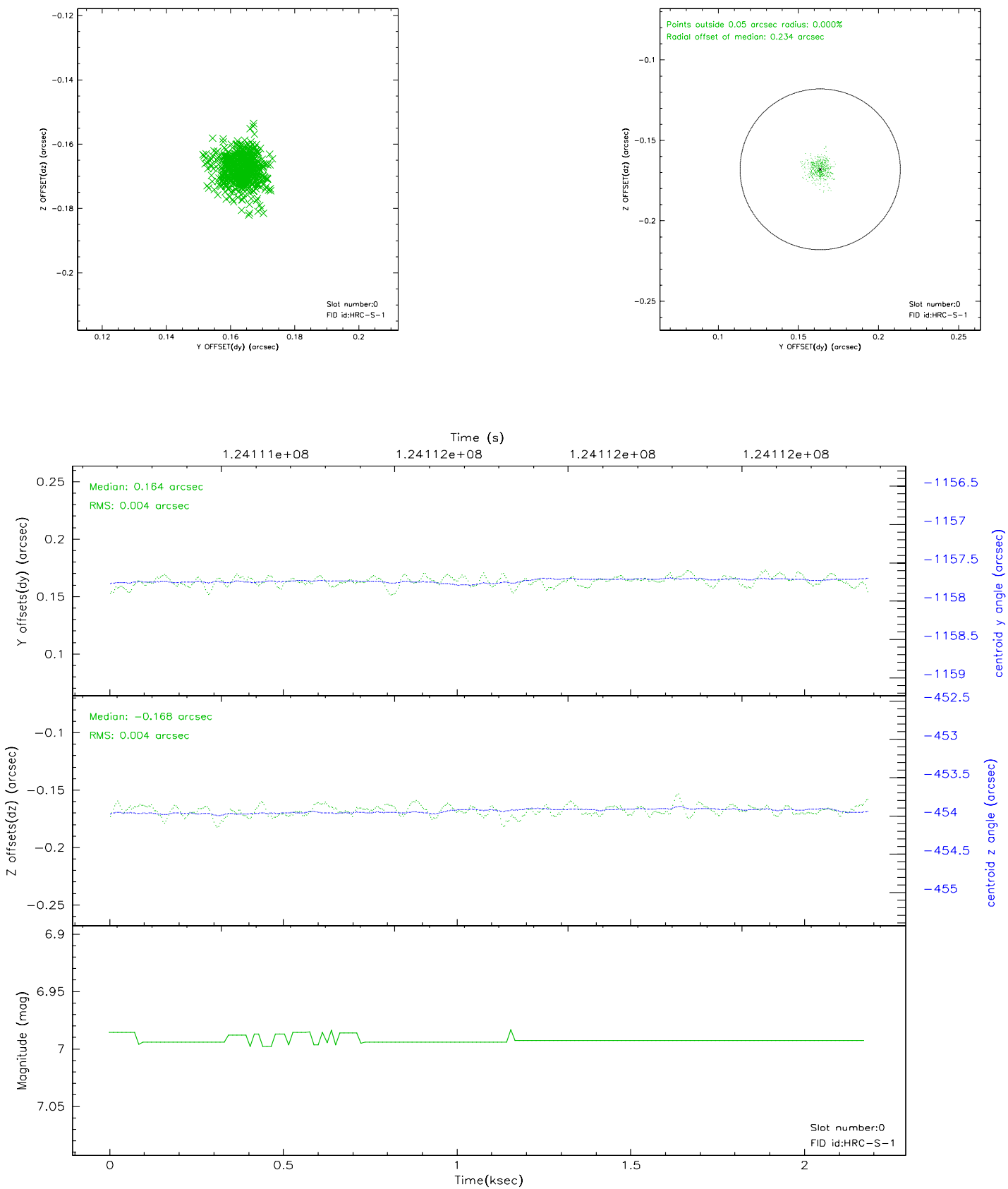


2.4.5 Slot 7

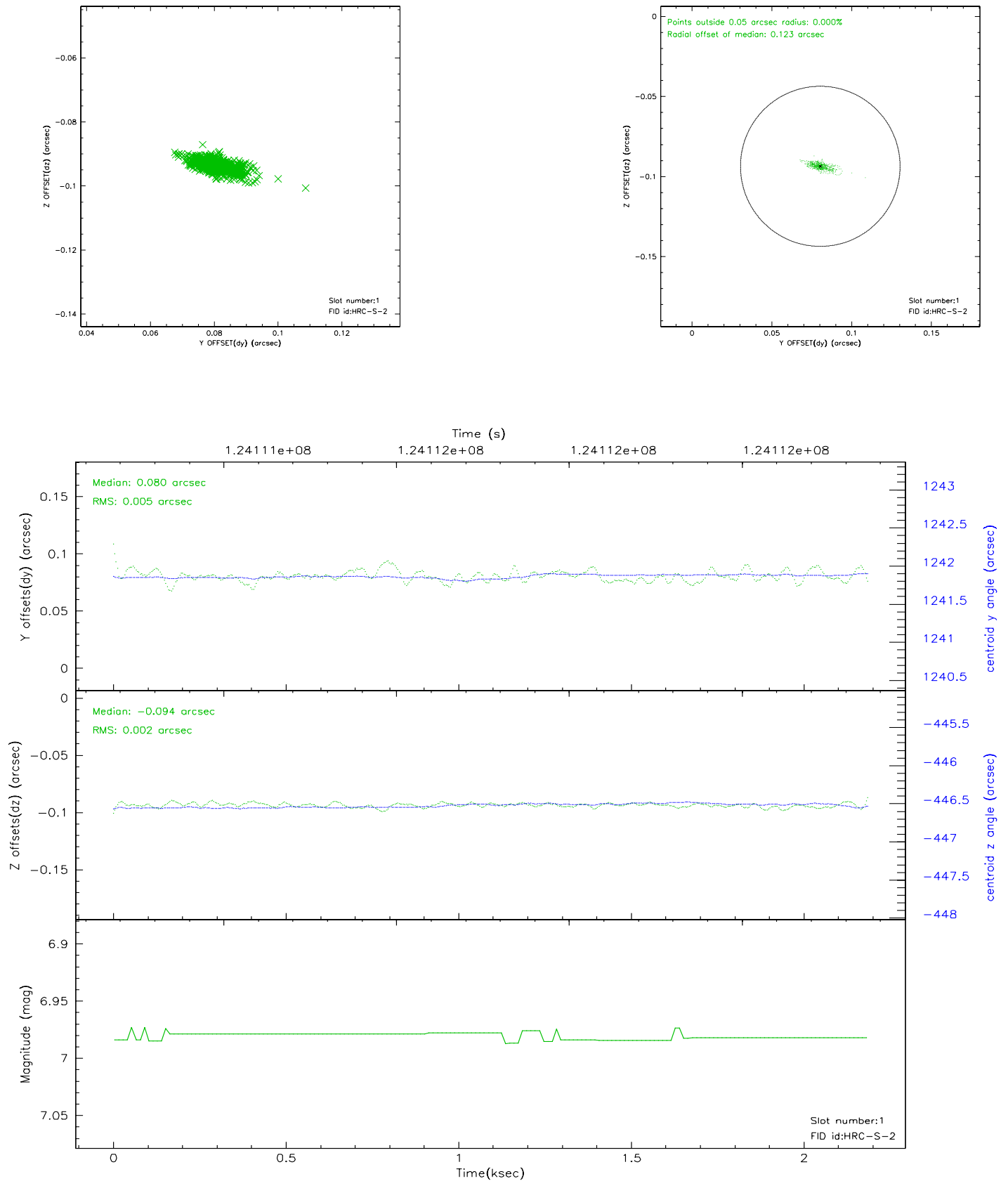


2.5 FID Slots

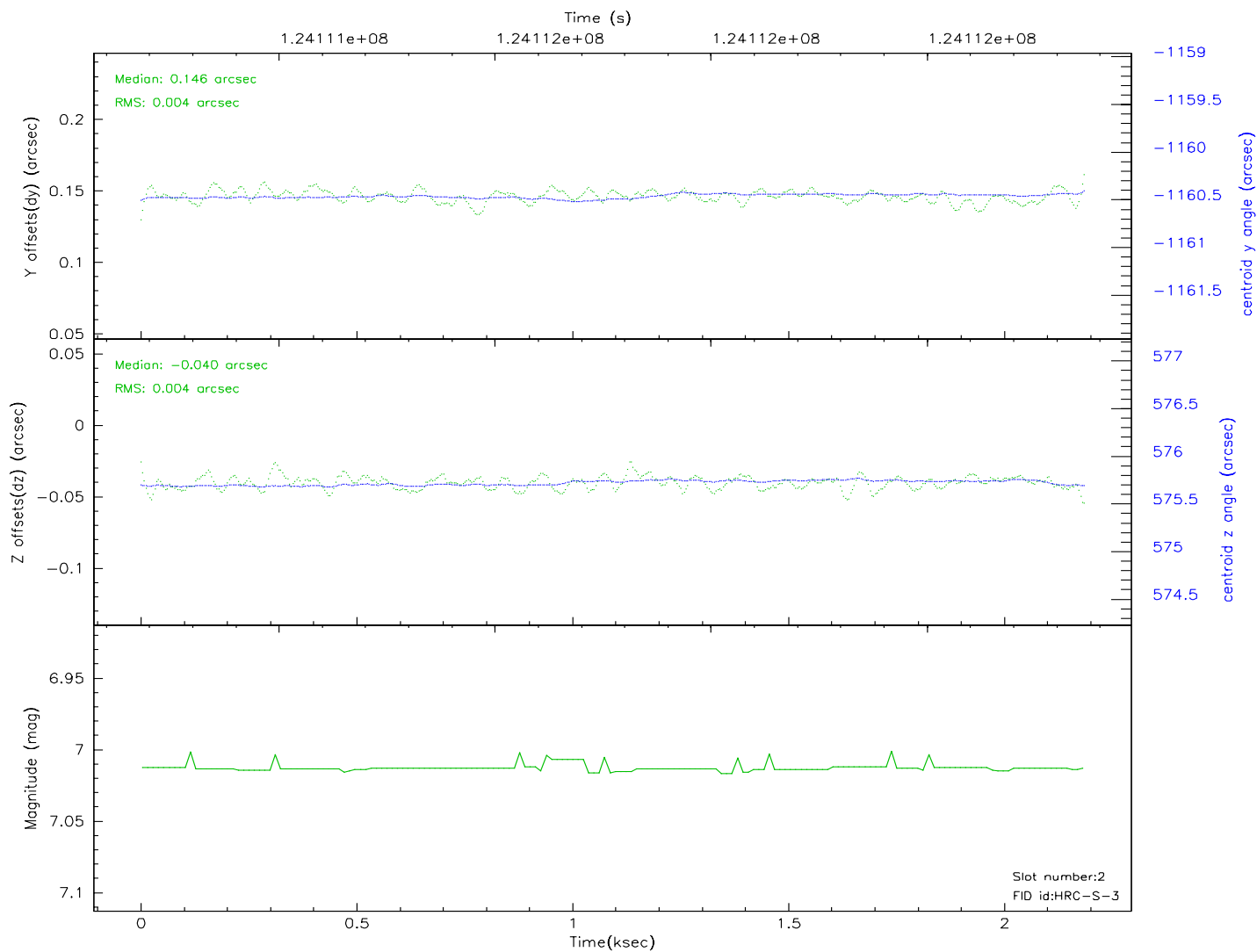
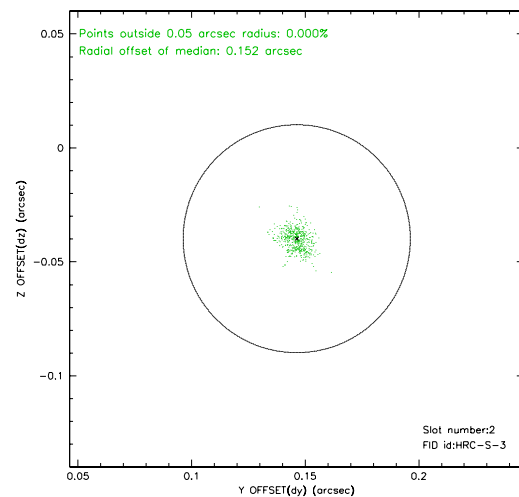
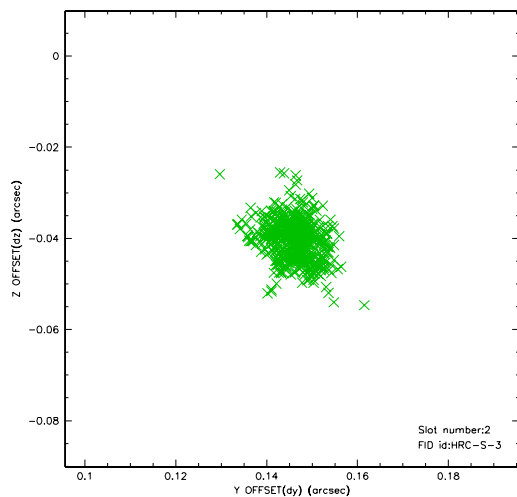
2.5.1 Slot 0



2.5.2 Slot 1



2.5.3 Slot 2



3 Point Sources

A Summary

A.1 Status

V&V Scientist	Beth Sundheim
V&V Date (YYYY-MM-DD)	2007.01.21
V&V Edition	1
V&V Disposition and Status	OK
V&V Charge Time	2.184

A.2 Comments