

V&V Reference Report

L2 ASCDS Version : 7.6.9

Observation 1544 - L2 Version 001
Chandra X-Ray Center

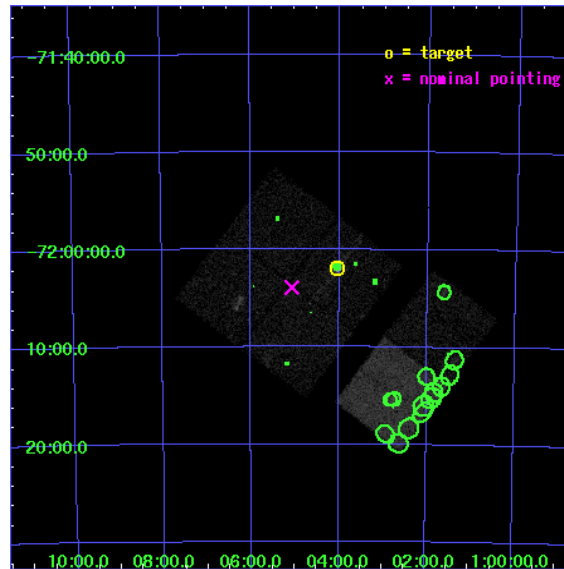
L2 Processing Date : Nov 25 2006

Contents

1	Front	2
2	OBI	3
2.1	OBI	3
2.1.1	Images	3
2.1.2	Bias	3
2.1.3	Parameters	4
2.1.4	Events	4
2.2	Compared Parameters	5
2.3	Aspect	6
2.4	Star Slots	9
2.4.1	Slot 3	9
2.4.2	Slot 4	10
2.4.3	Slot 5	11
2.4.4	Slot 6	12
2.4.5	Slot 7	13
2.5	FID Slots	14
2.5.1	Slot 0	14
2.5.2	Slot 1	15
2.5.3	Slot 2	16
3	Point Sources	17
A	Summary	18
A.1	Status	18
A.2	Comments	18

1 Front

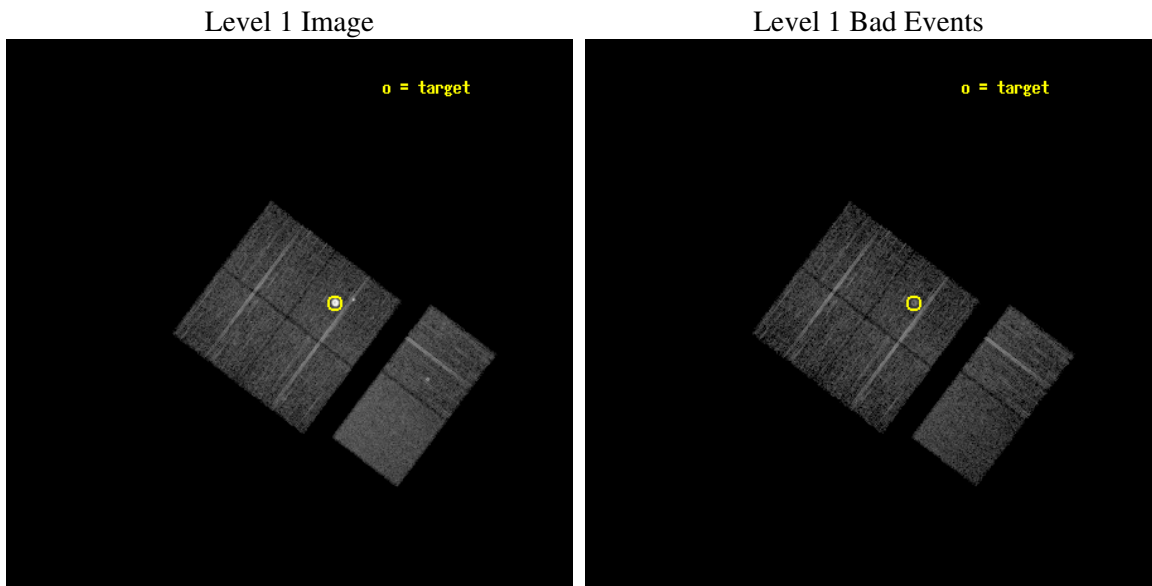
seq_num	590153
obs_id	1544
title	ACIS CALIBRATION OBSERVATION OF THE SUPERNOVA REMNANT E0102-72 (JUNE 2001)
observer	Dr. CXC Calibration
object	E0102-72.3 [Chip I2, T=120, Offsets=4,2,0]
dtcycle	0
cycle	P
ra_targ	16.01
dec_targ	-72.032028
ra_nom	16.266557018612
dec_nom	-72.065250988558
roll_nom	127.09902429237
revision	2
ontime	7510.3590467423
livetime	7415.2583582972
ontime0	7510.359076649
ontime1	7513.6000069976
ontime2	7510.3590467423
ontime3	7513.6000069976
ontime6	7513.6000069976
ontime7	7513.6000069976
l2events	78264



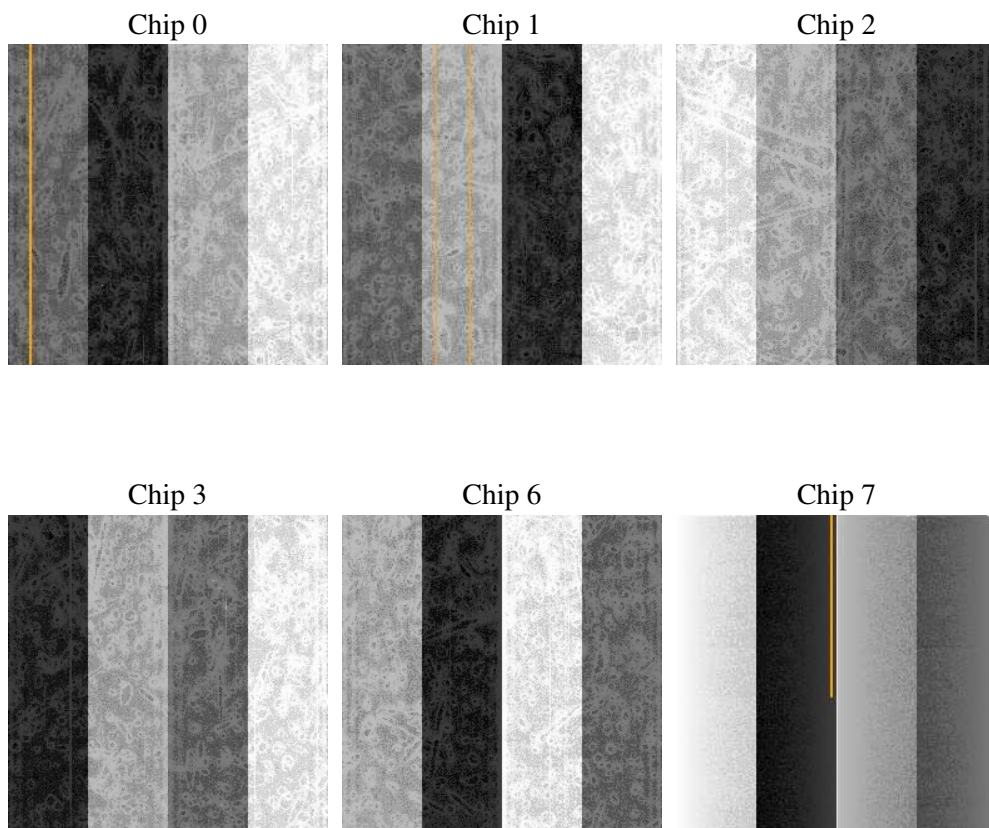
2 OBI

2.1 OBI

2.1.1 Images



2.1.2 Bias



2.1.3 Parameters

obi_num	0
ascdsver	7.6.9
caldbver	3.2.4
date	2006-11-25T07:27:30
revision	2

sched_exp_time	7755.000000
ontime	7515.8760825098
ontime0	7515.8761124164
ontime1	7519.117042765
ontime2	7515.8760825098
ontime3	7519.117042765
ontime6	7519.117042765
ontime7	7519.1170726866
l1events	340527

2.1.4 Events

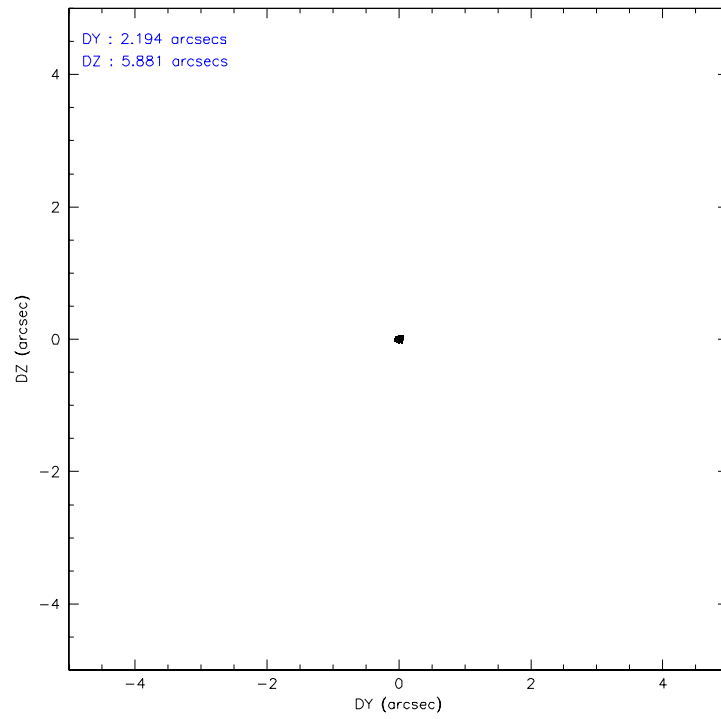
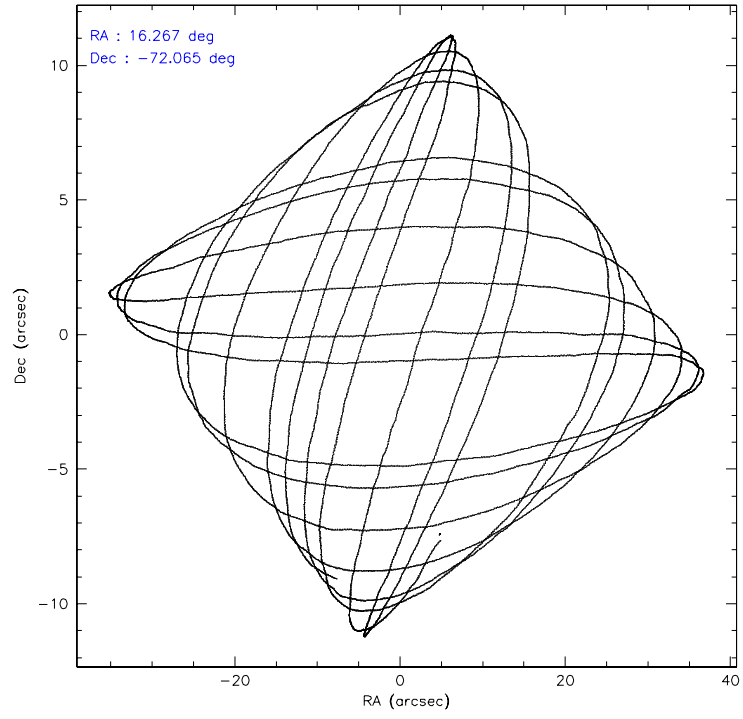
	ccd 0	ccd 1	ccd 2	ccd 3	ccd 6	ccd 7
level 1 events	46655	48720	76903	50800	53762	63687
rejected events	40854	42036	43163	44412	47116	39072
rejected %	87%	86%	56%	87%	87%	61%

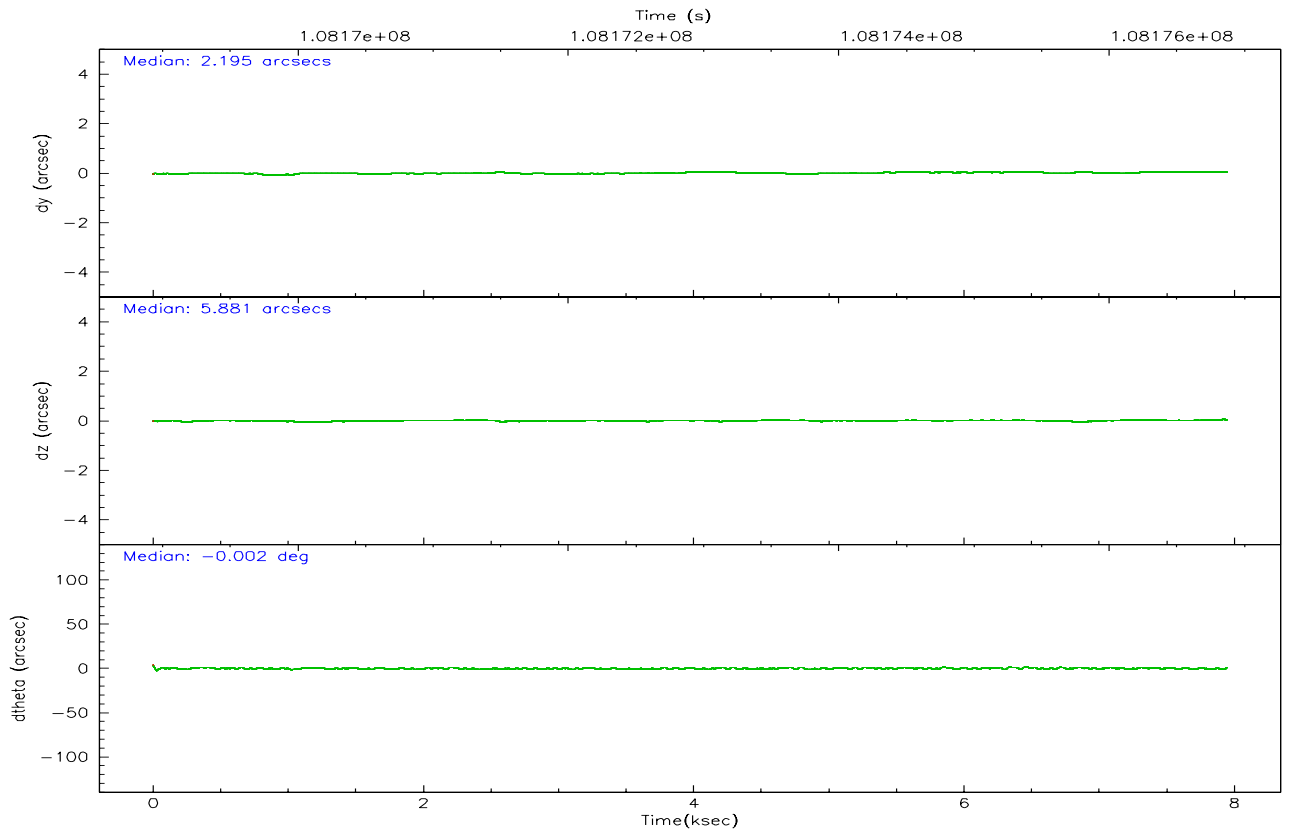
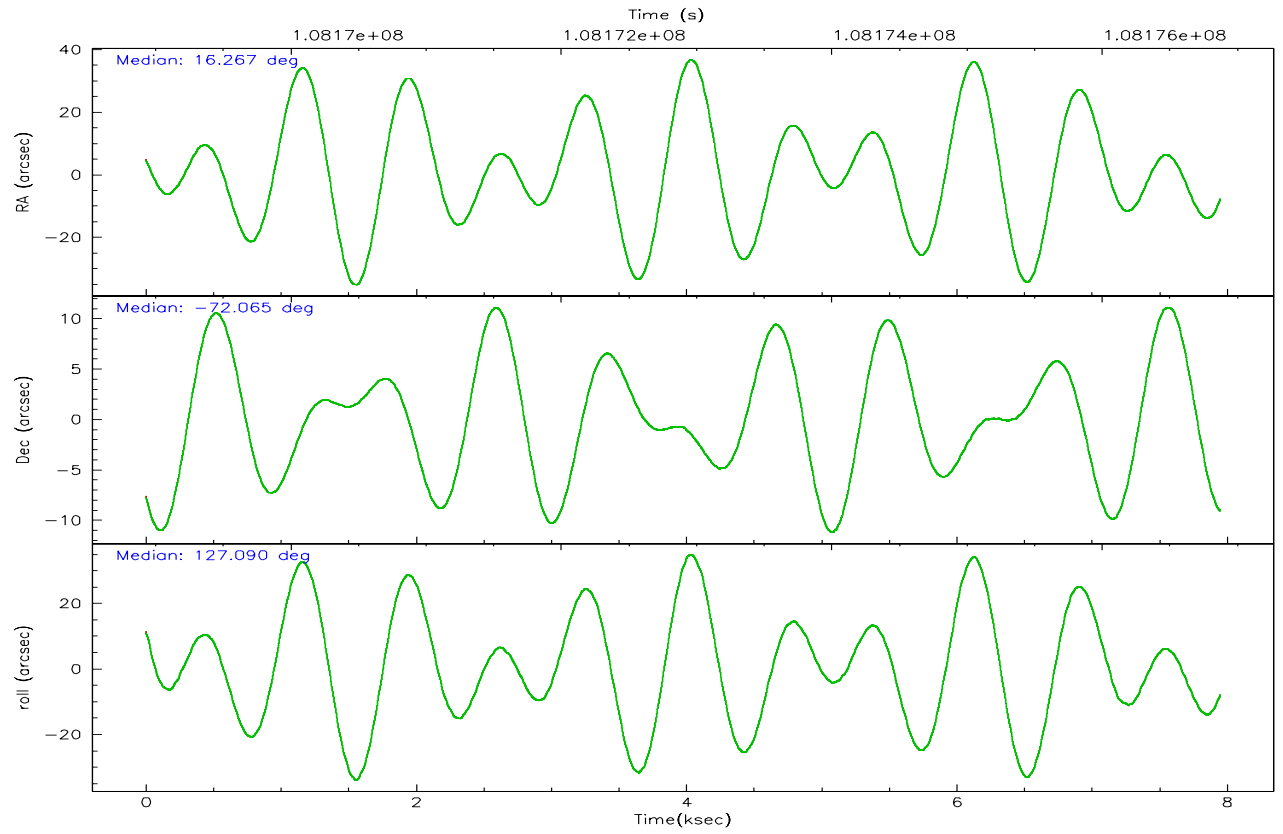
	ccd 0	ccd 1	ccd 2	ccd 3	ccd 6	ccd 7
grade 0 events	2483	2974	27289	3052	3077	1654
	5%	6%	35%	6%	5%	2%
grade 1 events	26	20	265	24	23	39
	0%	0%	0%	0%	0%	0%
grade 2 events	1192	1300	3198	1148	1217	5944
	2%	2%	4%	2%	2%	9%
grade 3 events	549	666	1051	564	588	1308
	1%	1%	1%	1%	1%	2%
grade 4 events	592	538	985	613	550	1307
	1%	1%	1%	1%	1%	2%
grade 5 events	1821	1997	1740	1845	2102	4233
	3%	4%	2%	3%	3%	6%
grade 6 events	991	1209	1254	1021	1220	14428
	2%	2%	1%	2%	2%	22%
grade 7 events	39001	40016	41121	42533	44985	34774
	83%	82%	53%	83%	83%	54%

2.2 Compared Parameters

Parameter	Planned	Actual	Parameter	Planned	Actual
Instrument	ACIS	ACIS	Obspar format version number	6	6
Detector	ACIS-012367	ACIS-012367	Obspar file type	PREDICTED	ACTUAL
Grating	NONE	NONE	Obspar update status	NONE	UPDATED
Data mode	FAINT	FAINT	Number of optional ACIS chips dropped	0	0
Observation mode	POINTING	POINTING	On-chip summing requested	N	N
Pointing RA	16.348901	16.26655701861188	Subarray requested	NONE	NONE
Pointing Dec	-72.075883	-72.06525098855774	Alternating exposures requested	N	N
Pointing Roll	126.968681	127.0990242923746	Primary exposure time	0.000000	3.2
Window start time	107740864.184000	107740864.184000			
Window stop time	110246464.184000	110246464.184000			
SIM focus pos (mm)	-0.782348	-0.7809083437167272			
SIM defocus (mm)	0	0.001439871863259334			
SIM translation stage pos (mm)	-233.592463	-233.5874344608287			
SIM translation stage offset (mm)	0	-0.005018542100998502			
Observation start time	108169121.184000	108168744.77228			
Observation start date	2001-06-05T22:57:37	2001-06-05T22:52:24			
Observation end time	108176876.184000	108177025.2351			
Observation end date	2001-06-06T01:06:52	2001-06-06T01:10:25			
Read mode	TIMED	TIMED			

2.3 Aspect



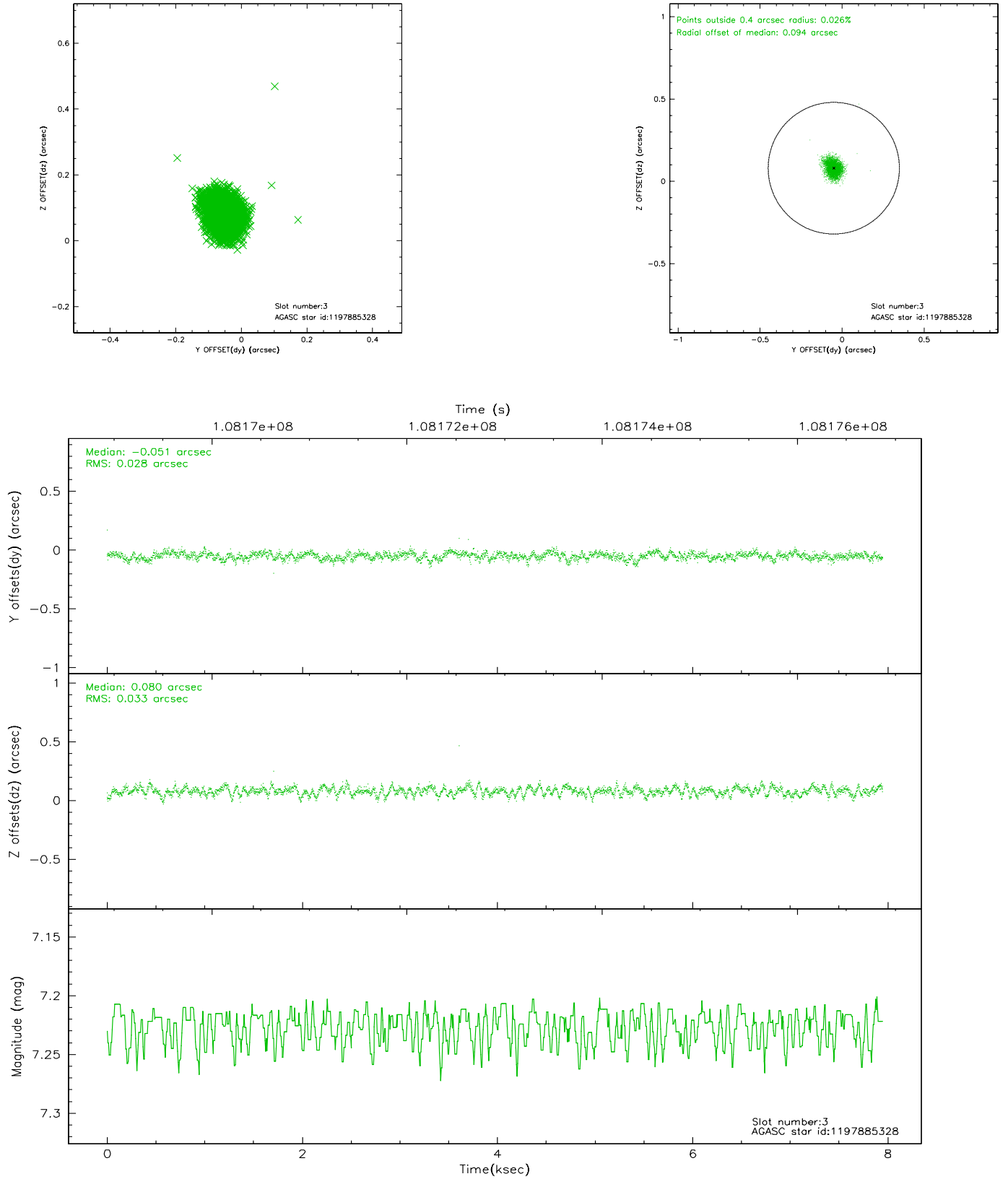


Slot Statistics

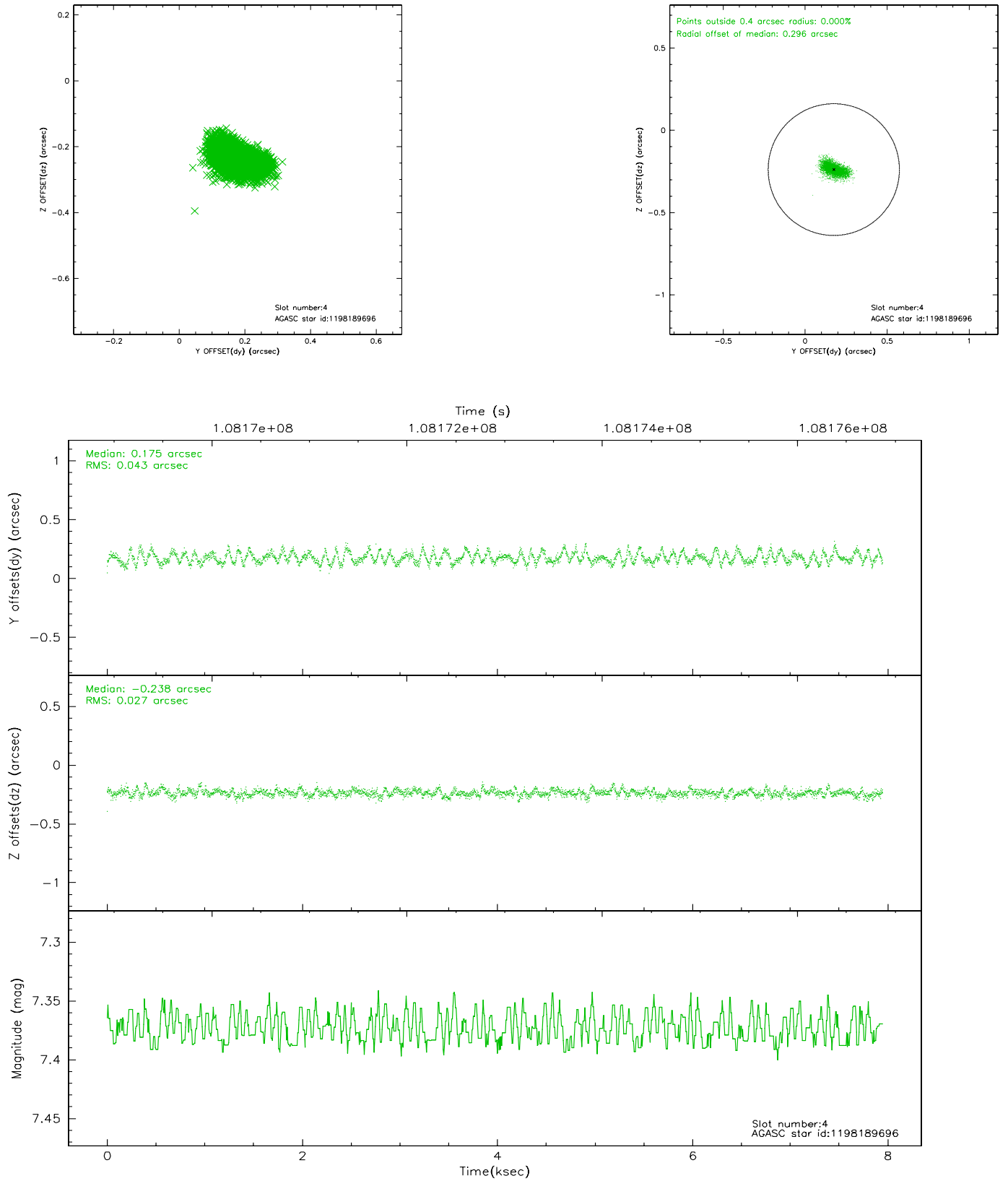
slot	status	id	mag	n_pts	med_dy	med_dz	dr1	dr2	ra	dec	mean_y	mean_z
0	FID	ACIS-I-2	7.15	1939	-0.015	-0.025	0.008	0.014	0.000000	0.000000	-756.57	-835.64
1	FID	ACIS-I-4	7.18	1939	-0.073	0.025	0.005	0.009	0.000000	0.000000	2157.11	1070.24
2	FID	ACIS-I-5	7.23	1939	-0.013	0.068	0.008	0.014	0.000000	0.000000	-1809.48	1068.93
3	GUIDE	1197885328	7.23	3878	-0.051	0.080	0.045	0.073	16.283090	-71.733943	1028.93	-680.78
4	GUIDE	1198189696	7.37	3878	0.175	-0.238	0.055	0.090	15.223750	-72.697522	-1071.82	2314.56
5	GUIDE	1197750936	7.58	3876	-0.189	0.099	0.052	0.087	15.387940	-71.549550	2165.60	-258.37
6	GUIDE	1197884536	8.49	3875	-0.012	0.060	0.058	0.090	17.160729	-71.835289	140.72	-1245.03
7	GUIDE	1197884712	8.30	3875	0.077	0.000	0.048	0.078	16.087398	-72.252690	-335.71	612.12

2.4 Star Slots

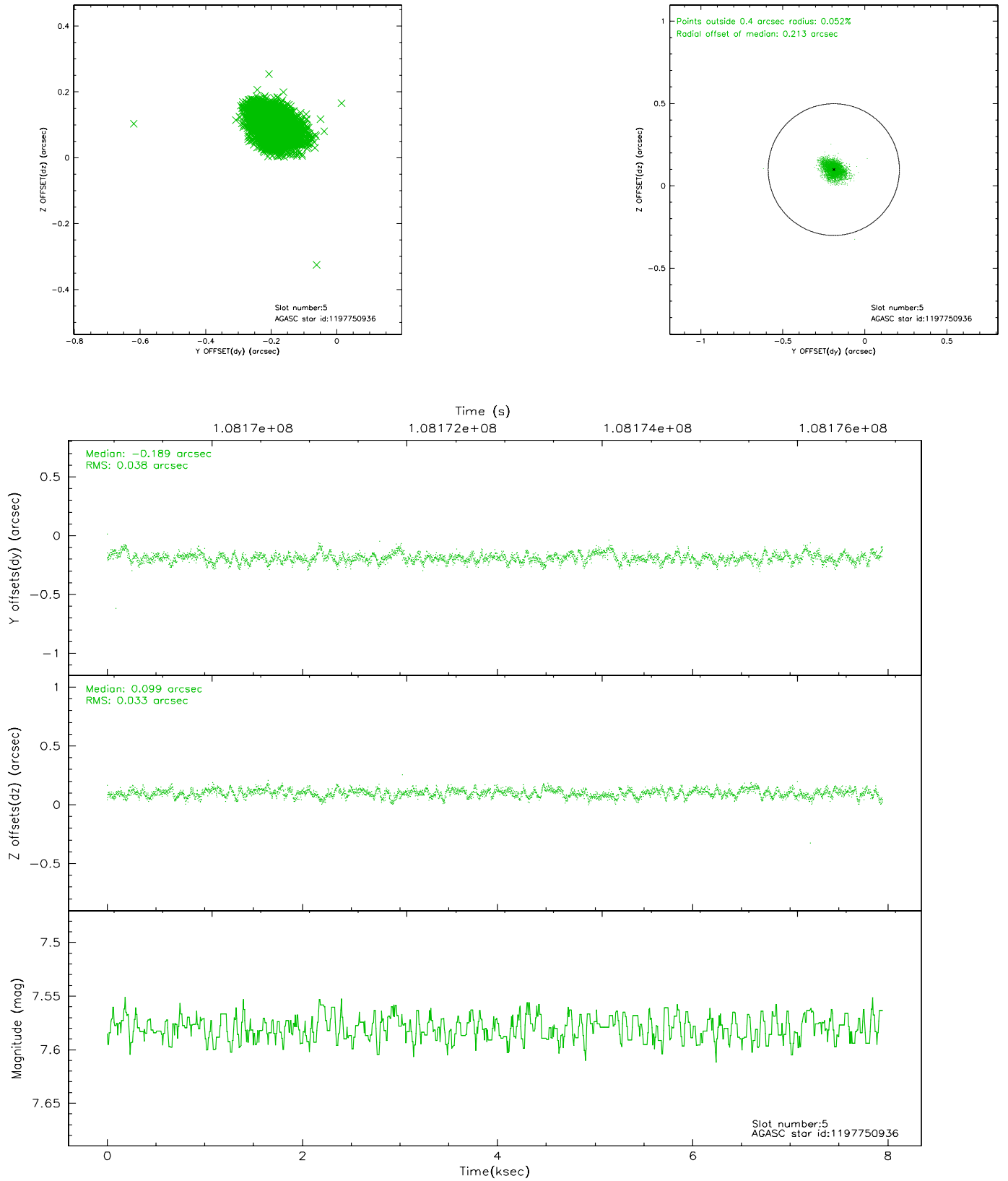
2.4.1 Slot 3



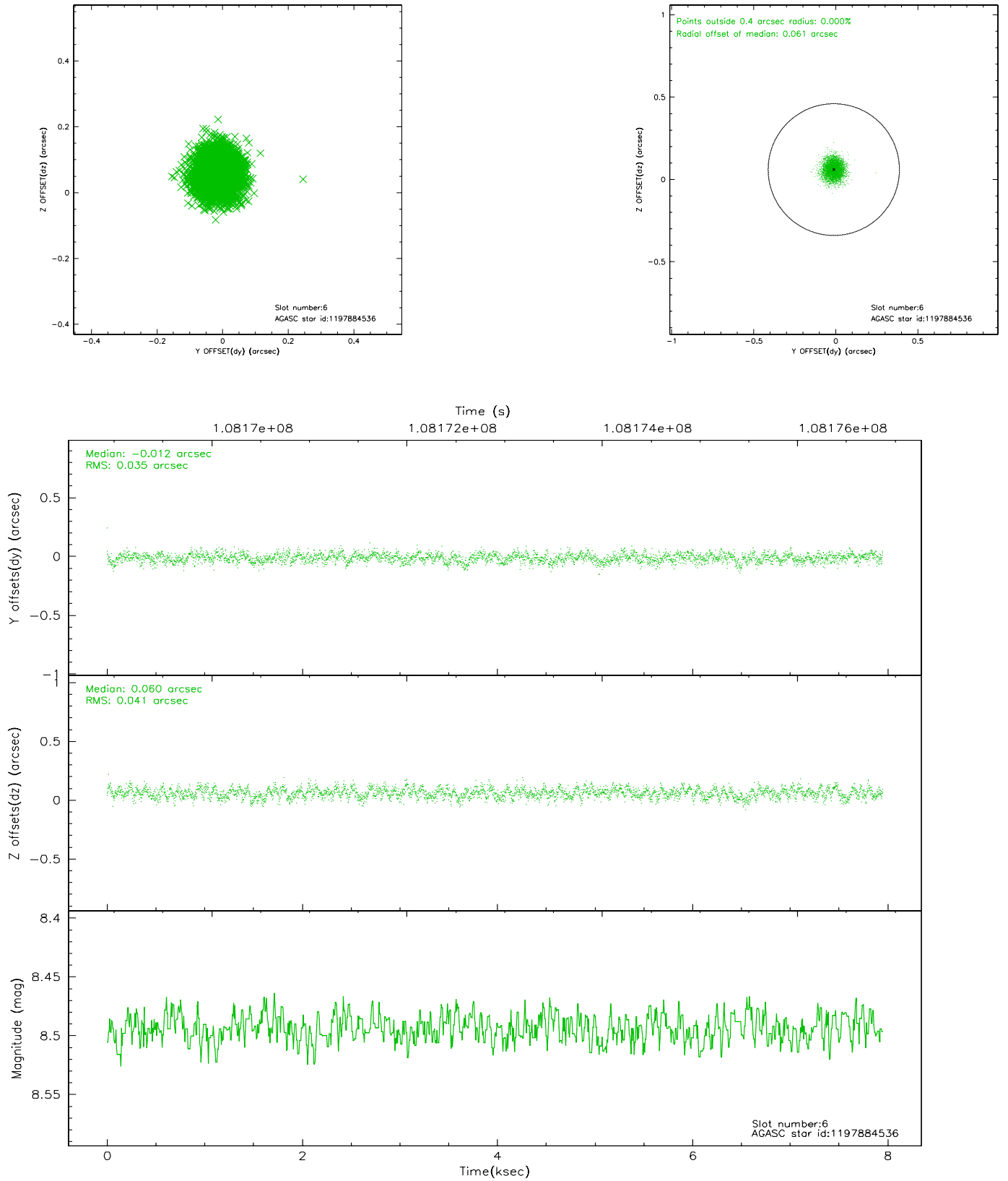
2.4.2 Slot 4



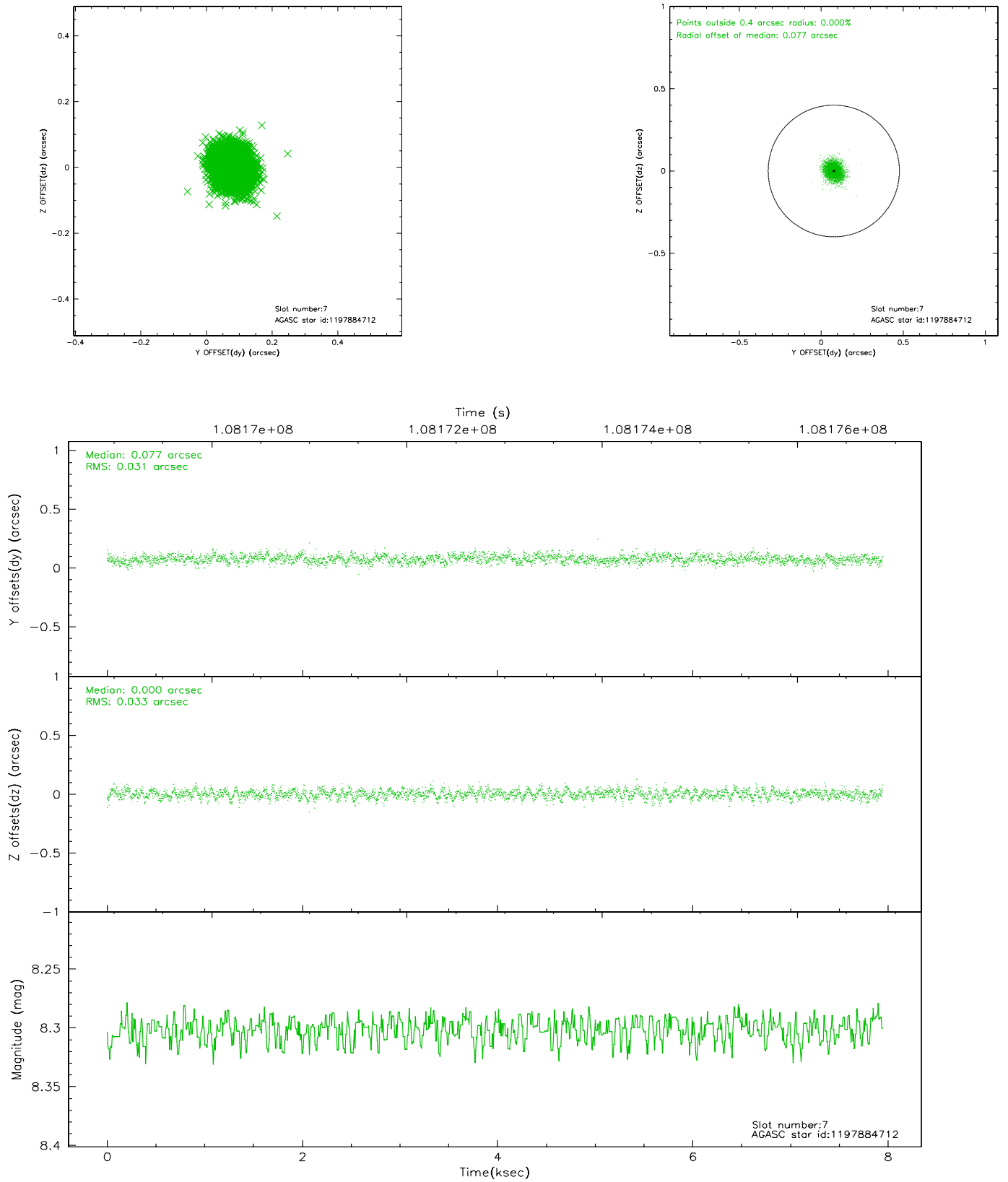
2.4.3 Slot 5



2.4.4 Slot 6

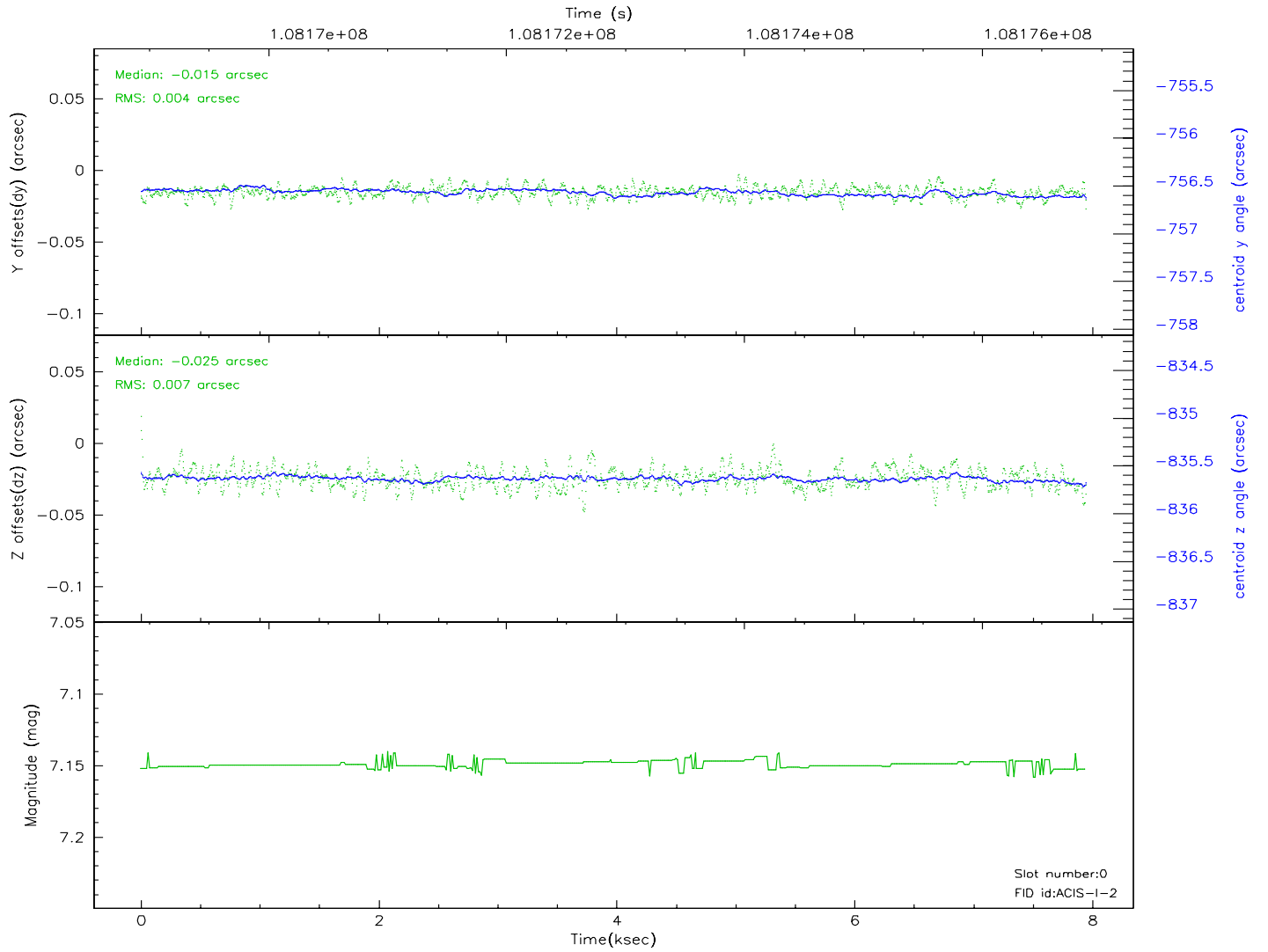
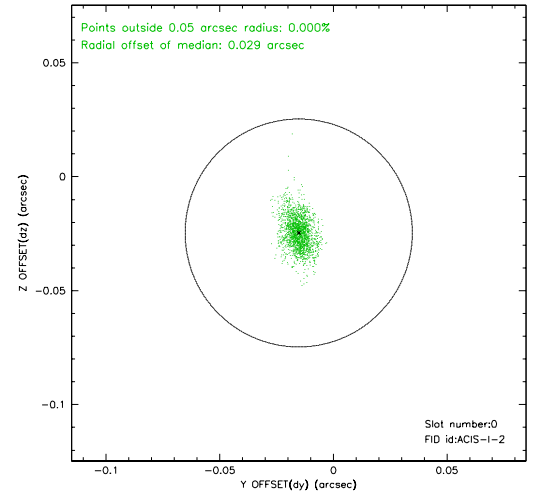
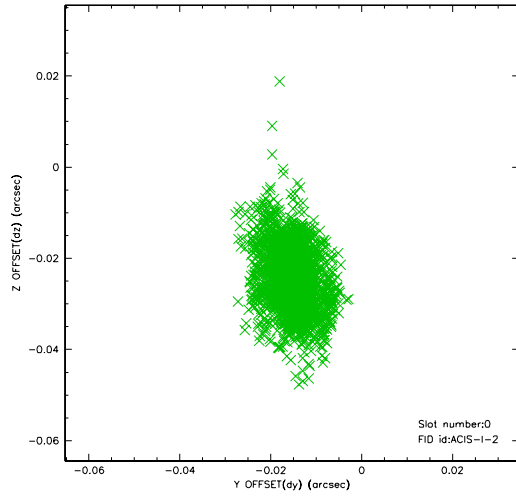


2.4.5 Slot 7

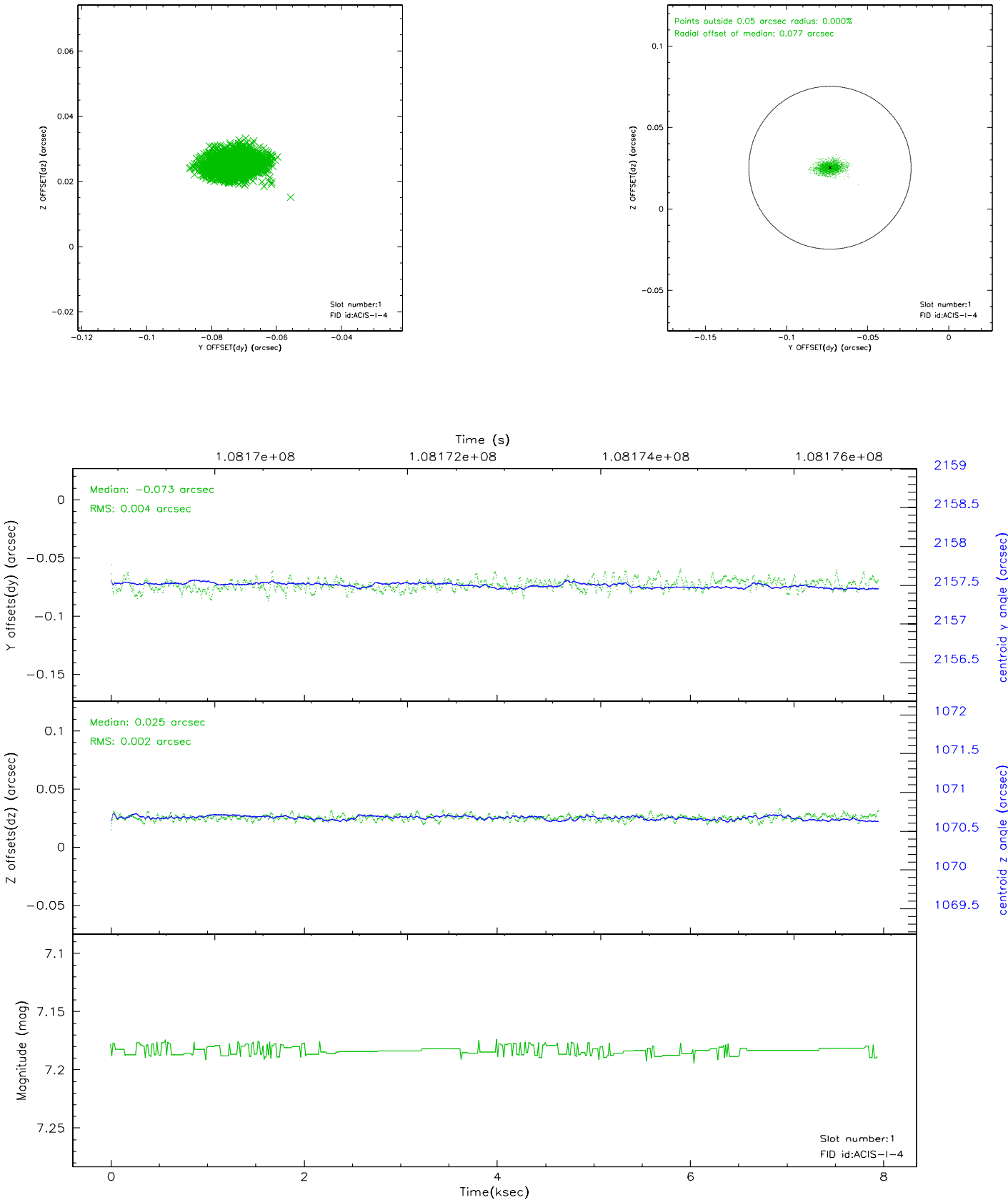


2.5 FID Slots

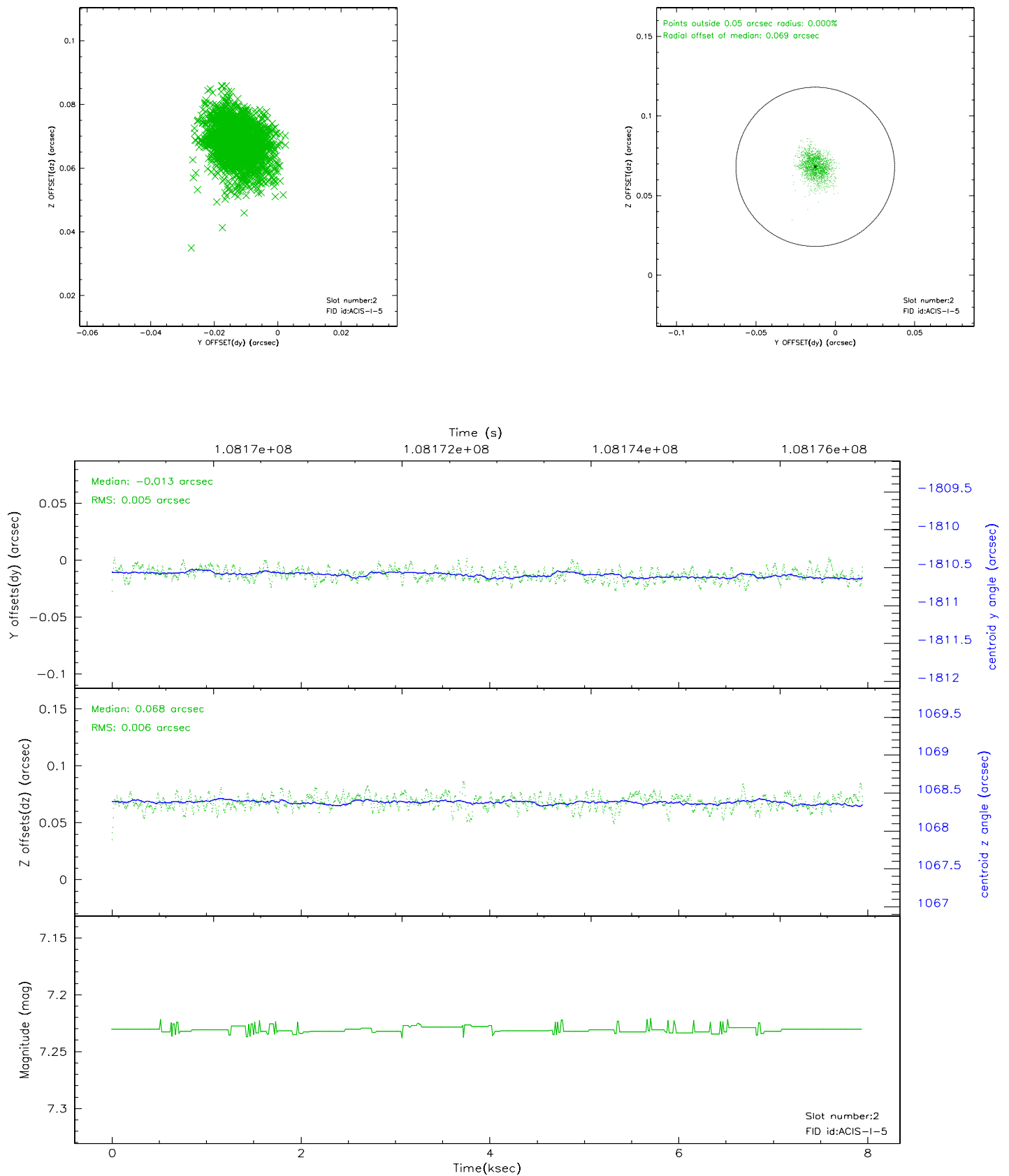
2.5.1 Slot 0



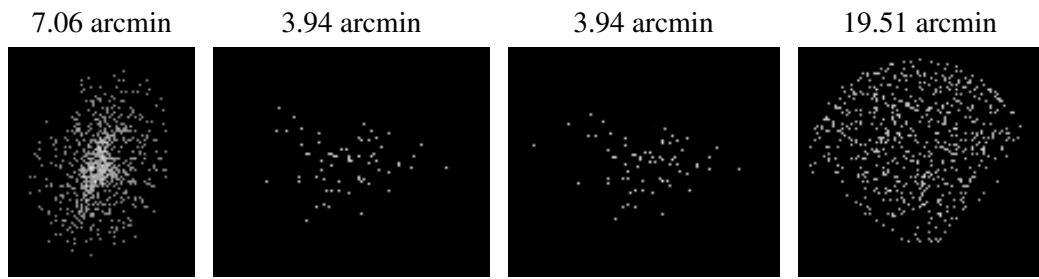
2.5.2 Slot 1



2.5.3 Slot 2



3 Point Sources



A Summary

A.1 Status

V&V Scientist	Beth Sundheim
V&V Date (YYYY-MM-DD)	2006.11.27
V&V Edition	1
V&V Disposition and Status	OK
V&V Charge Time	7.5

A.2 Comments

Window constraint OK.