

V&V Reference Report

L2 ASCDS Version : 7.6.9

Observation 1533 - L2 Version 001
Chandra X-Ray Center

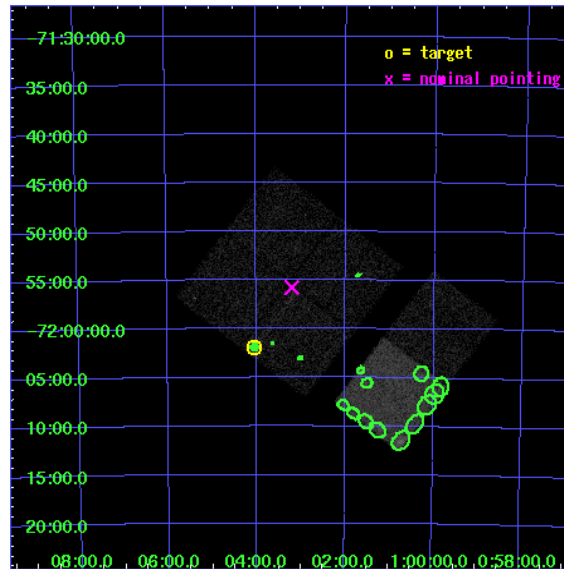
L2 Processing Date : Nov 25 2006

Contents

1	Front	2
2	OBI	3
2.1	OBI	3
2.1.1	Images	3
2.1.2	Bias	3
2.1.3	Parameters	4
2.1.4	Events	4
2.2	Compared Parameters	5
2.3	Aspect	6
2.4	Star Slots	9
2.4.1	Slot 3	9
2.4.2	Slot 4	10
2.4.3	Slot 5	11
2.4.4	Slot 6	12
2.4.5	Slot 7	13
2.5	FID Slots	14
2.5.1	Slot 0	14
2.5.2	Slot 1	15
2.5.3	Slot 2	16
3	Point Sources	17
A	Summary	18
A.1	Status	18
A.2	Comments	18

1 Front

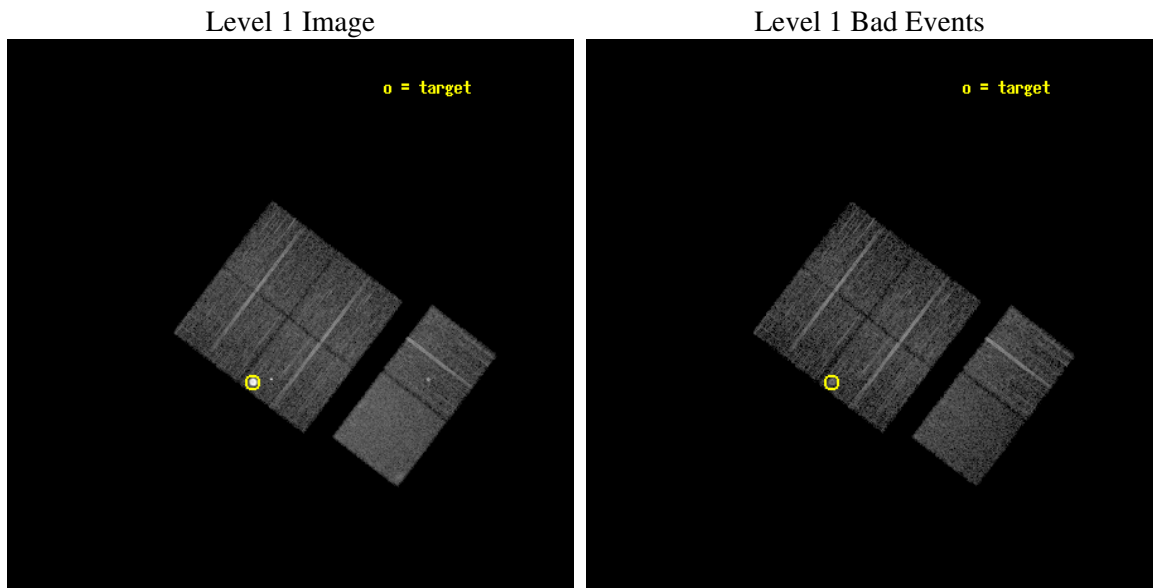
seq_num	590142
obs_id	1533
title	ACIS CALIBRATION OBSERVATION OF THE SUPERNOVA REMNANT E0102-72 (JUNE 2001)
observer	Dr. CXC Calibration
object	E0102-72.3 [Chip I3, T=120, Offsets=-7,0,0]
dtcycle	0
cycle	P
ra_targ	16.01
dec_targ	-72.032028
ra_nom	15.799459864565
dec_nom	-71.929494317769
roll_nom	127.34372707653
revision	2
ontime	7510.4000069946
livetime	7415.2987998861
ontime0	7510.4000069946
ontime1	7510.4000069946
ontime2	7510.4000069946
ontime3	7510.4000069946
ontime6	7510.4000069946
ontime7	7510.4000069946
l2events	72752



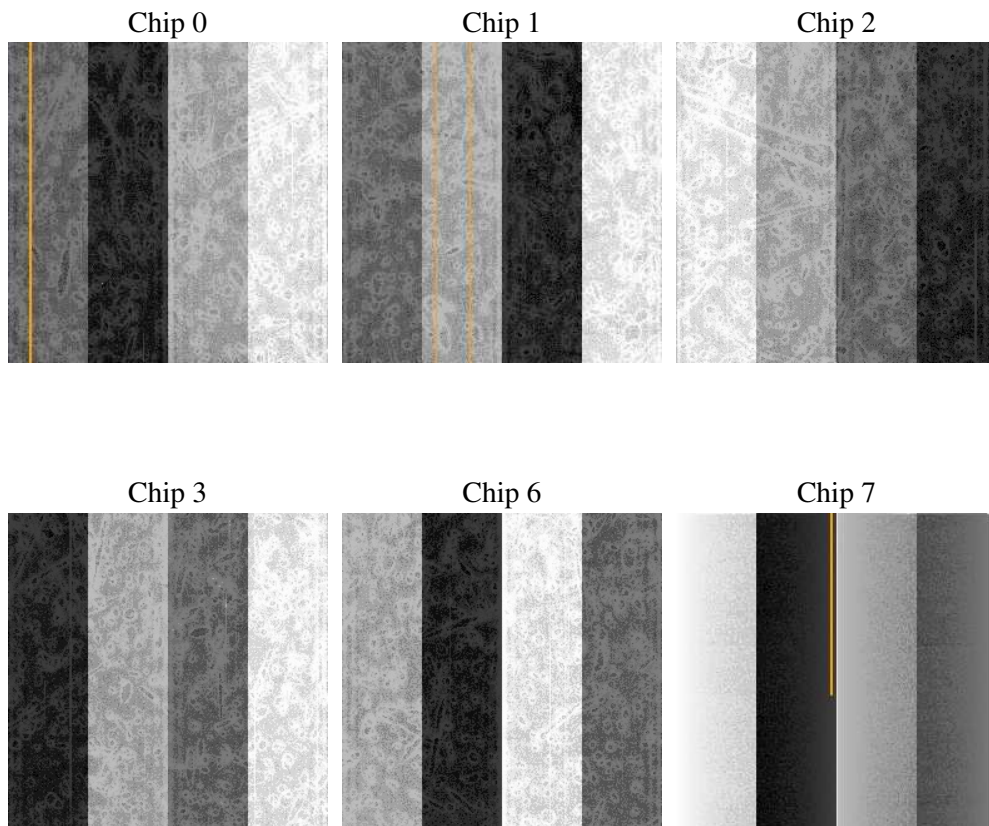
2 OBI

2.1 OBI

2.1.1 Images



2.1.2 Bias



2.1.3 Parameters

obi_num	0
ascdsver	7.6.9
caldbver	3.2.4
date	2006-11-25T06:41:59
revision	2

sched_exp_time	7755.000000
ontime	7515.8757625967
ontime0	7515.8757625967
ontime1	7515.8757625967
ontime2	7515.8757625967
ontime3	7515.8757625967
ontime6	7515.8757625967
ontime7	7515.8757625967
l1events	326195

2.1.4 Events

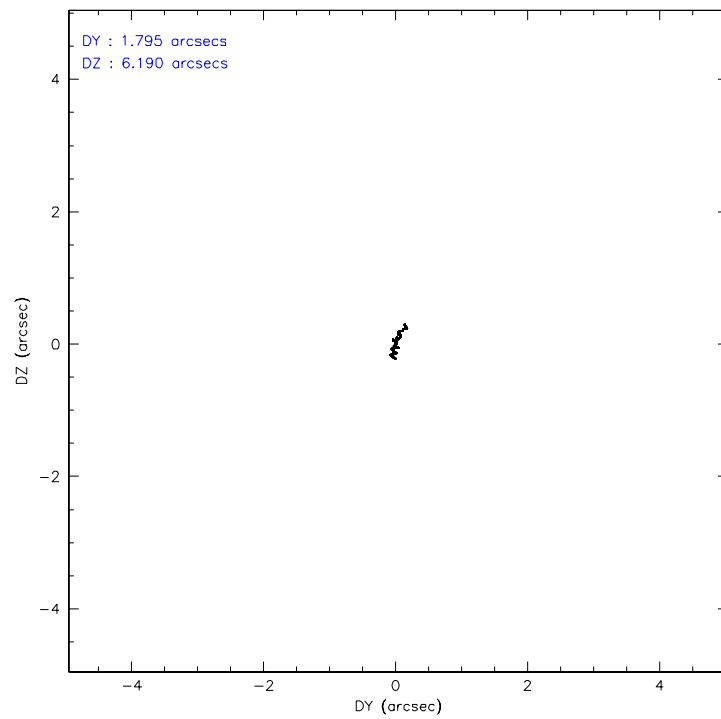
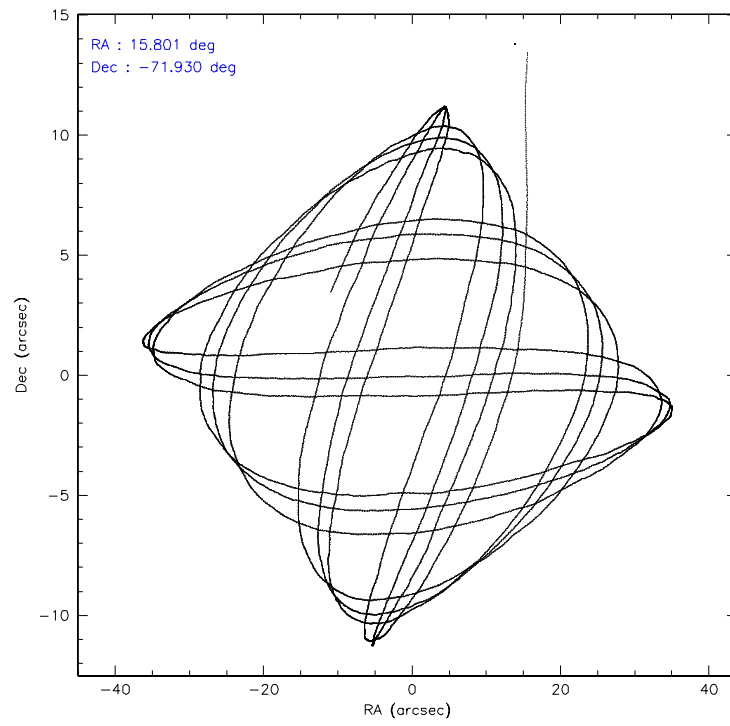
	ccd 0	ccd 1	ccd 2	ccd 3	ccd 6	ccd 7
level 1 events	44717	44530	48376	72721	52443	63408
rejected events	39060	38592	42716	43456	46052	38357
rejected %	87%	86%	88%	59%	87%	60%

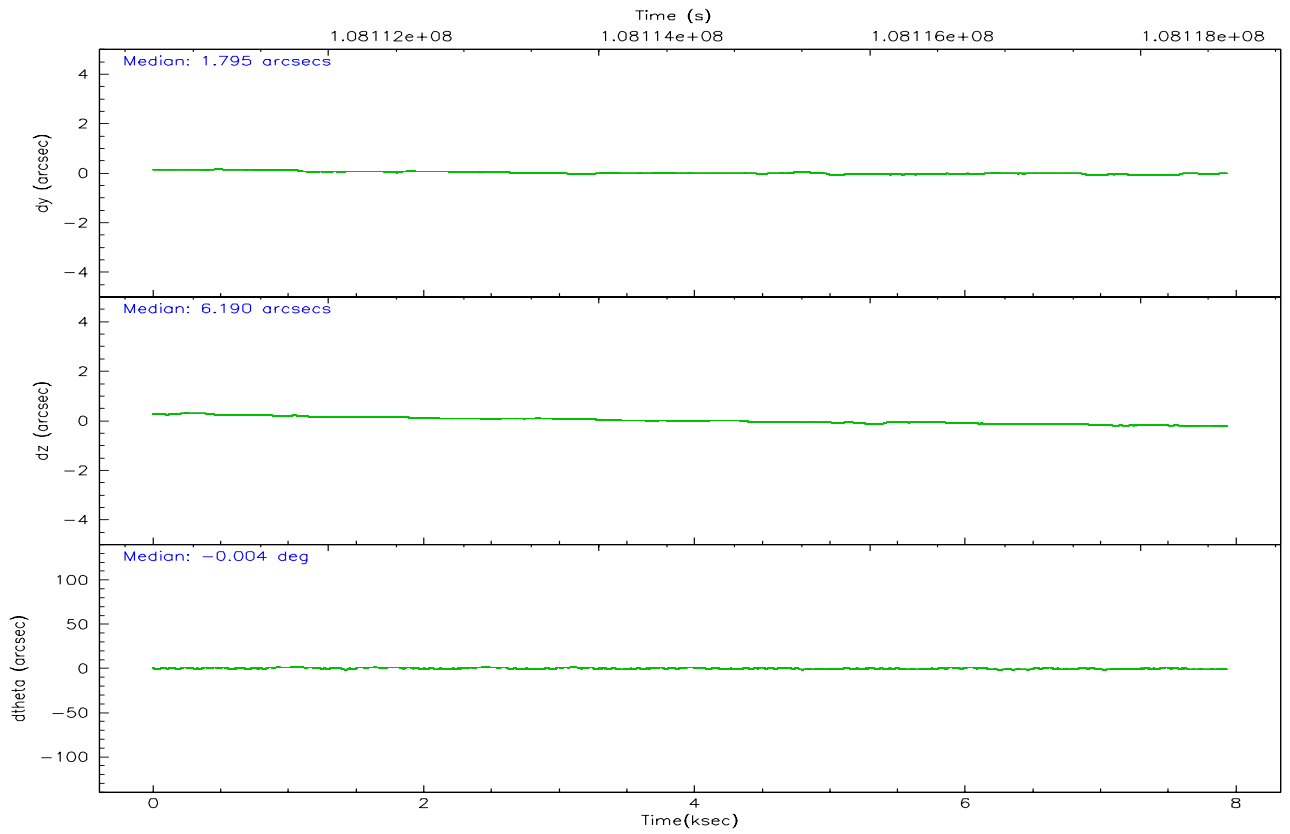
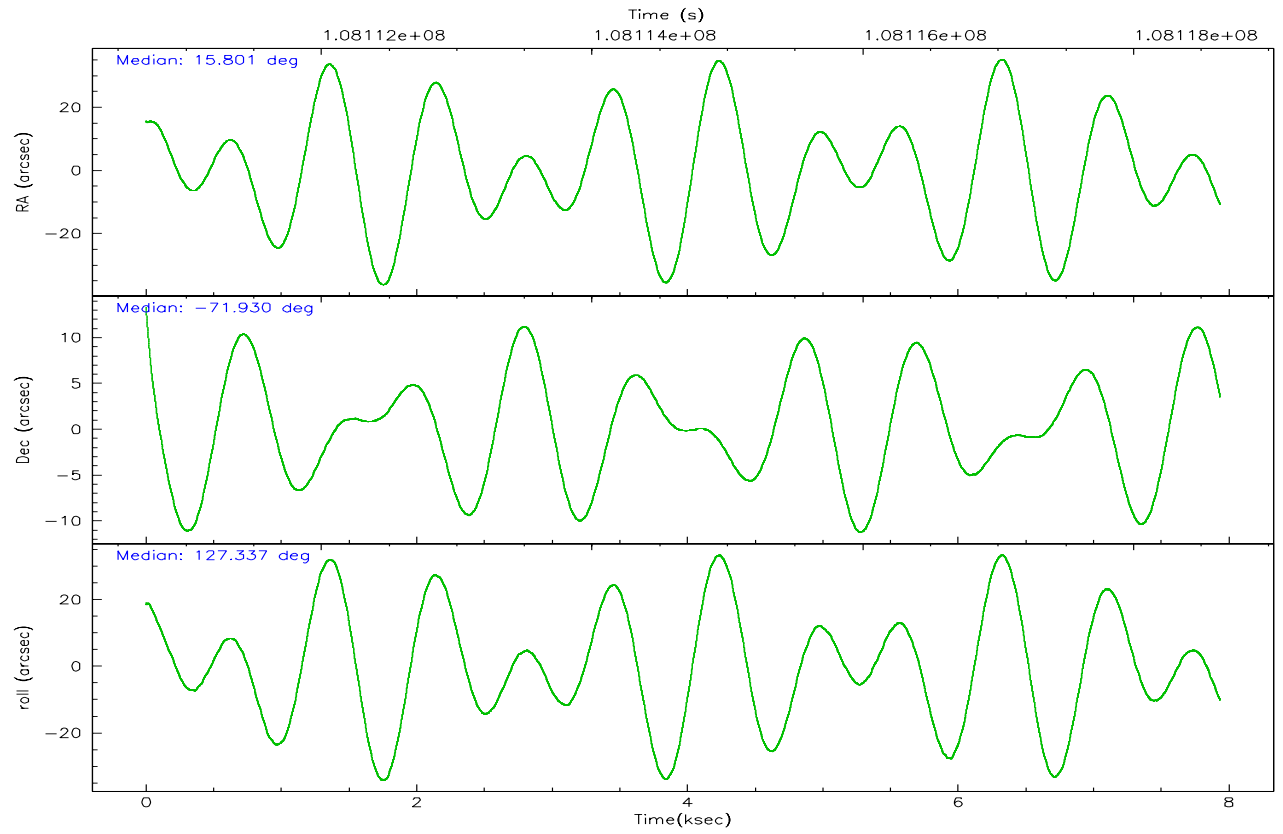
	ccd 0	ccd 1	ccd 2	ccd 3	ccd 6	ccd 7
grade 0 events	2443	2481	2534	22978	2935	1872
	5%	5%	5%	31%	5%	2%
grade 1 events	27	22	29	193	28	34
	0%	0%	0%	0%	0%	0%
grade 2 events	1225	1199	1116	3013	1167	6125
	2%	2%	2%	4%	2%	9%
grade 3 events	506	586	494	989	549	1423
	1%	1%	1%	1%	1%	2%
grade 4 events	510	564	523	1033	533	1436
	1%	1%	1%	1%	1%	2%
grade 5 events	1734	1831	1700	1949	2158	4232
	3%	4%	3%	2%	4%	6%
grade 6 events	978	1115	1001	1276	1219	14222
	2%	2%	2%	1%	2%	22%
grade 7 events	37294	36732	40979	41290	43854	34064
	83%	82%	84%	56%	83%	53%

2.2 Compared Parameters

Parameter	Planned	Actual	Parameter	Planned	Actual
Instrument	ACIS	ACIS	Obspar format version number	6	6
Detector	ACIS-012367	ACIS-012367	Obspar file type	PREDICTED	ACTUAL
Grating	NONE	NONE	Obspar update status	NONE	UPDATED
Data mode	FAINT	FAINT	Number of optional ACIS chips dropped	0	0
Observation mode	POINTING	POINTING	On-chip summing requested	N	N
Pointing RA	15.881139	15.79945986456478	Subarray requested	NONE	NONE
Pointing Dec	-71.940039	-71.9294943177685	Alternating exposures requested	N	N
Pointing Roll	127.212687	127.3437270765328	Primary exposure time	0.000000	3.2
Window start time	107740864.184000	107740864.184000			
Window stop time	110246464.184000	110246464.184000			
SIM focus pos (mm)	-0.782348	-0.7809083437167272			
SIM defocus (mm)	0	0.001439871863259334			
SIM translation stage pos (mm)	-233.592463	-233.5874344608287			
SIM translation stage offset (mm)	0	-0.005018542100998502			
Observation start time	108110885.184000	108110100.42			
Observation start date	2001-06-05T06:47:01	2001-06-05T06:35:00			
Observation end time	108118640.184000	108118773.97033			
Observation end date	2001-06-05T08:56:16	2001-06-05T08:59:33			
Read mode	TIMED	TIMED			

2.3 Aspect



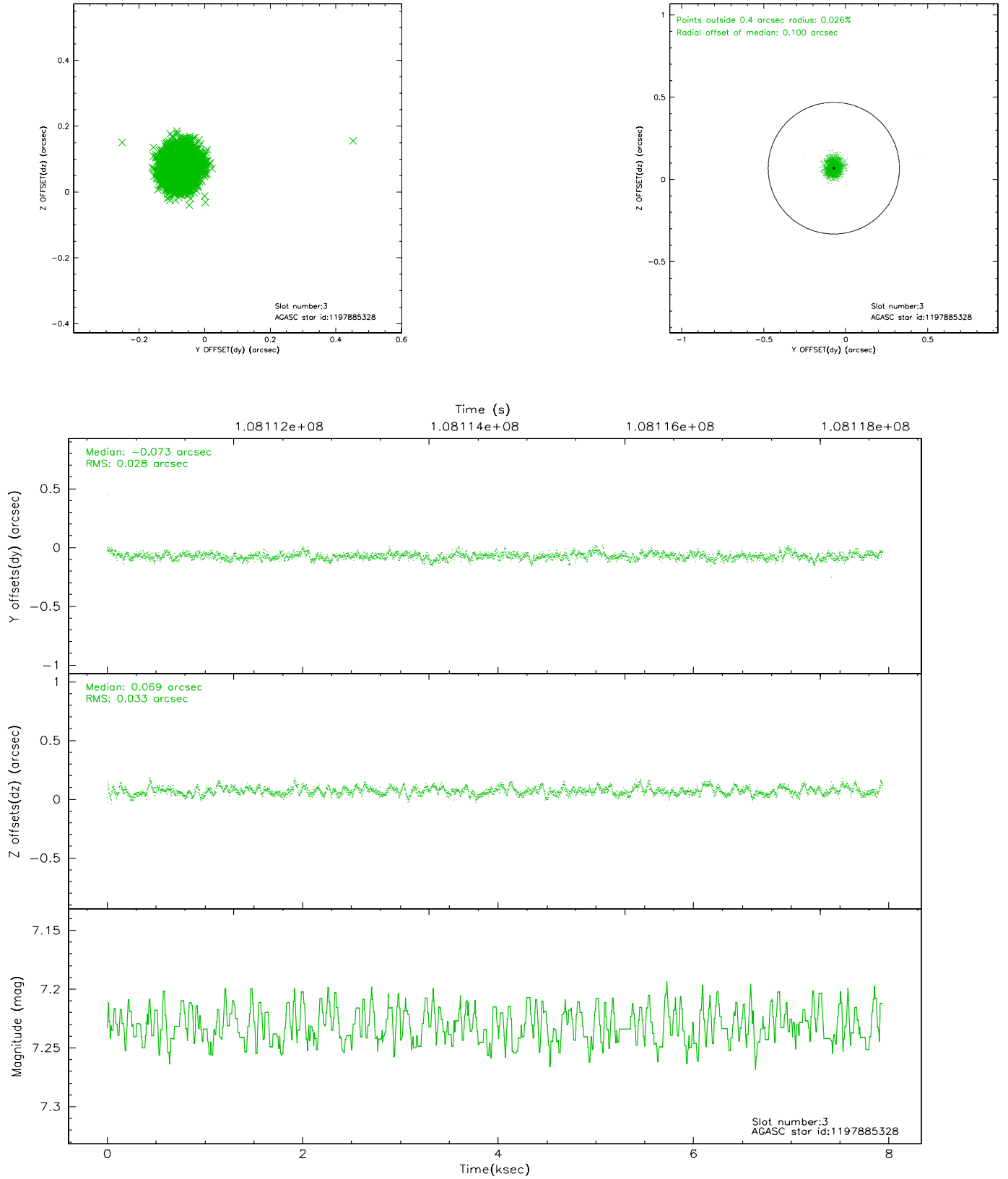


Slot Statistics

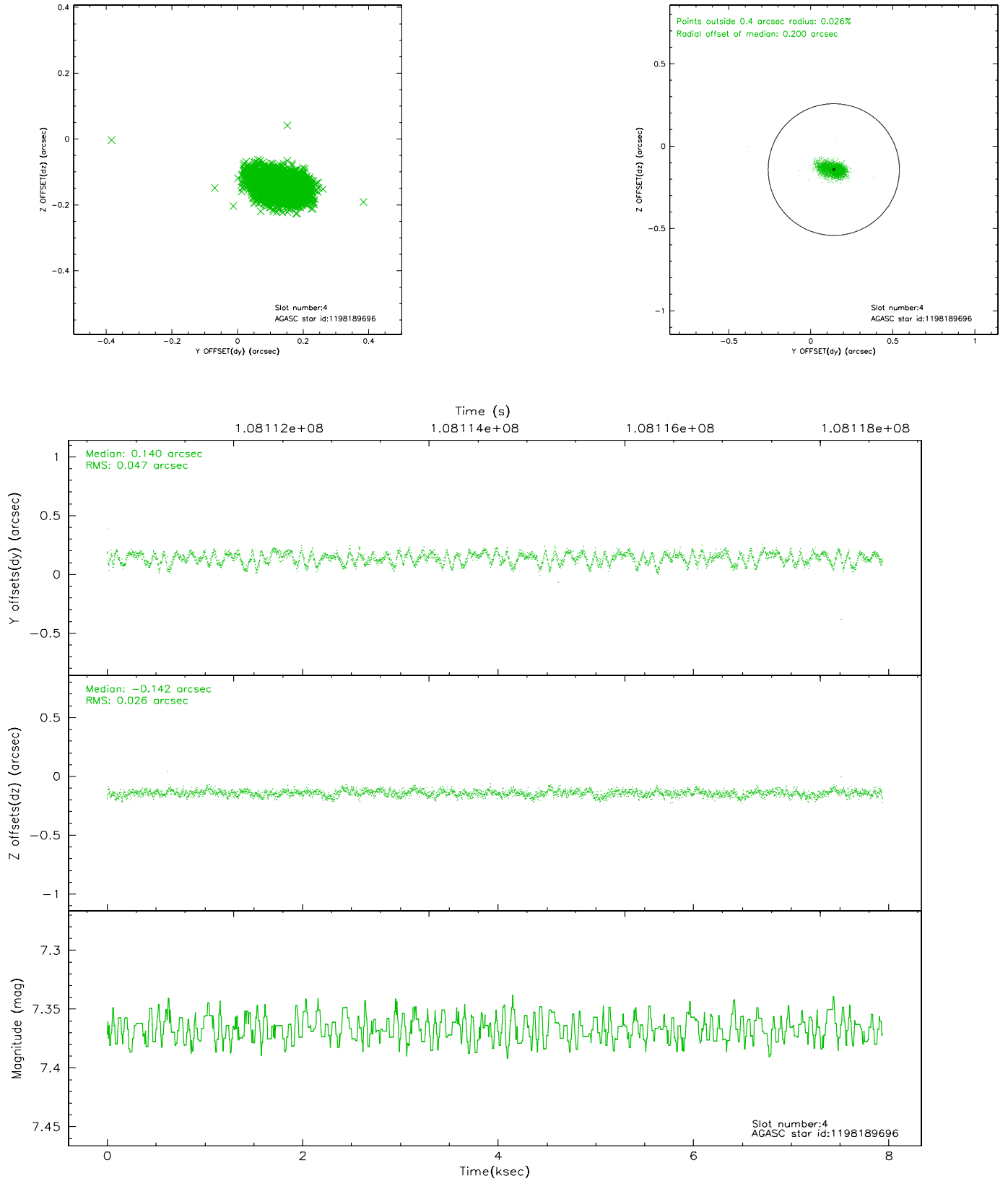
slot	status	id	mag	n_pts	med_dy	med_dz	dr1	dr2	ra	dec	mean_y	mean_z
0	FID	ACIS-I-1	7.25	1936	0.016	-0.018	0.009	0.014	0.000000	0.000000	938.06	-829.57
1	FID	ACIS-I-5	7.23	1936	0.132	0.115	0.012	0.020	0.000000	0.000000	-1809.60	1067.62
2	FID	ACIS-I-6	7.25	1935	-0.239	-0.026	0.012	0.022	0.000000	0.000000	402.50	1712.85
3	GUIDE	1197885328	7.23	3872	-0.073	0.069	0.046	0.074	16.283090	-71.733943	316.39	-807.71
4	GUIDE	1198189696	7.37	3873	0.140	-0.142	0.055	0.093	15.223750	-72.697522	-1748.31	2212.83
5	GUIDE	1197750936	7.57	3873	-0.075	0.068	0.045	0.075	15.387940	-71.549550	1458.01	-399.08
6	GUIDE	1197884536	8.50	3873	0.008	0.039	0.065	0.107	17.160729	-71.835289	-578.70	-1361.28
7	GUIDE	1197884712	8.31	3872	0.004	-0.033	0.056	0.089	16.087398	-72.252690	-1032.81	501.47

2.4 Star Slots

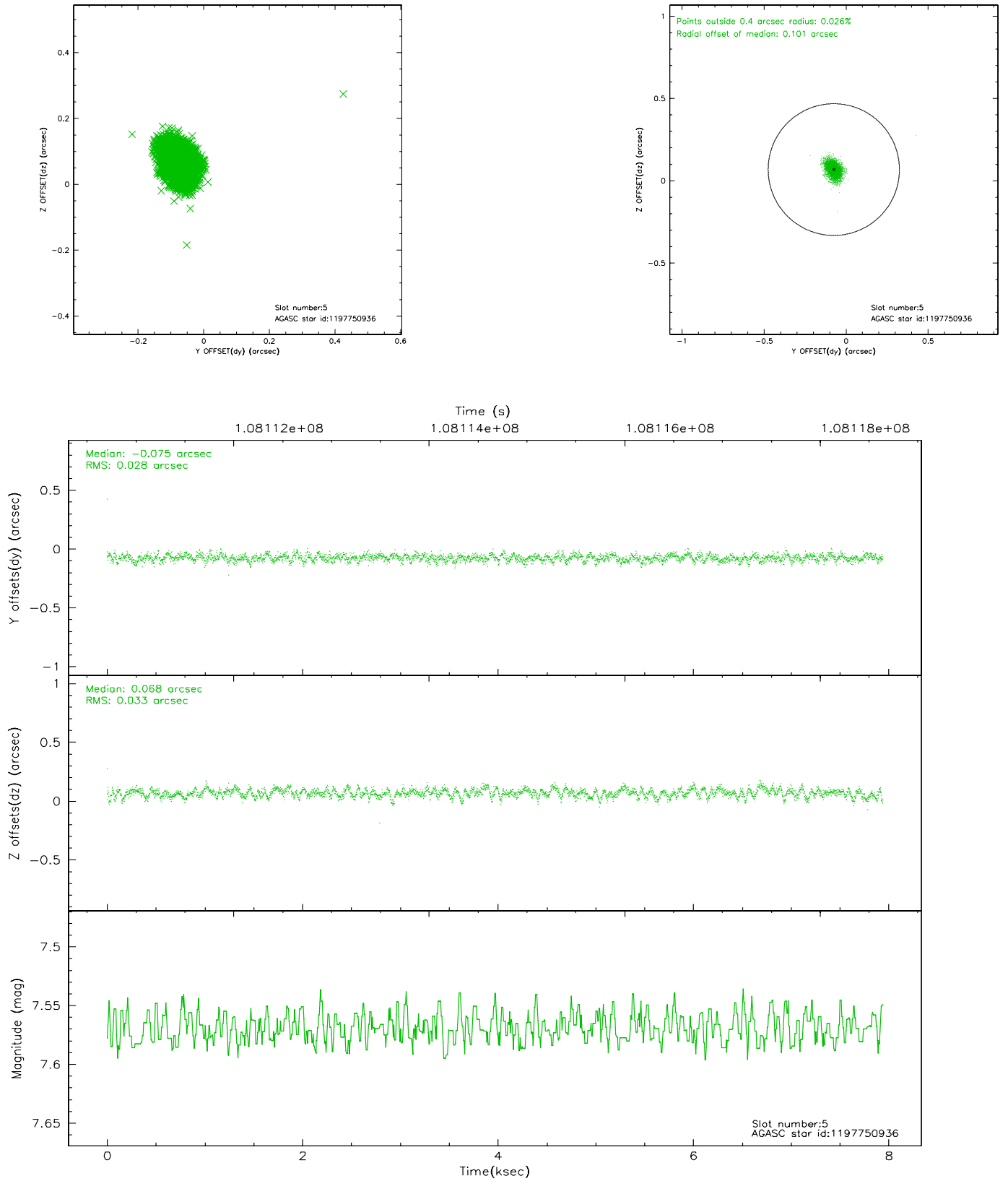
2.4.1 Slot 3



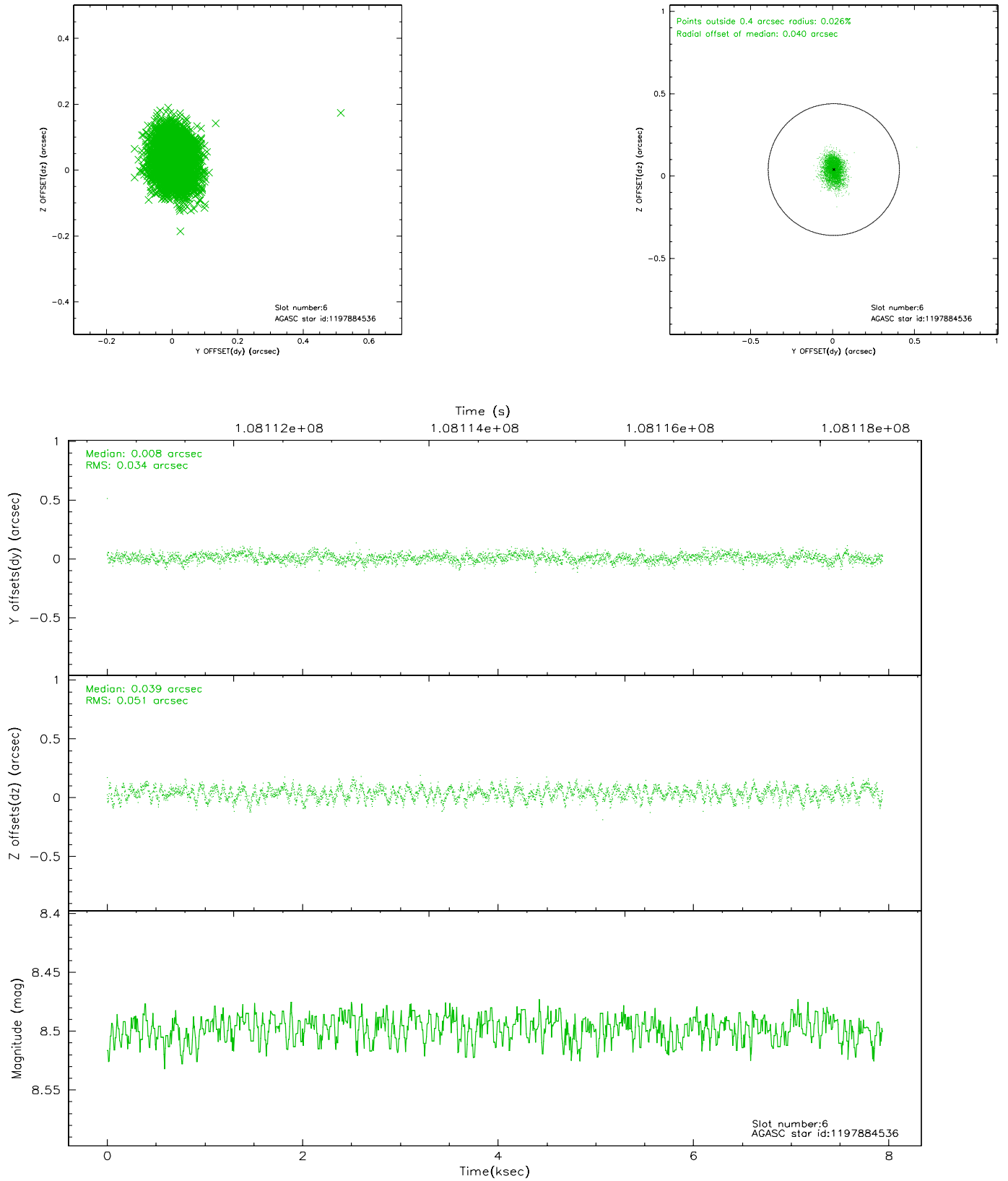
2.4.2 Slot 4



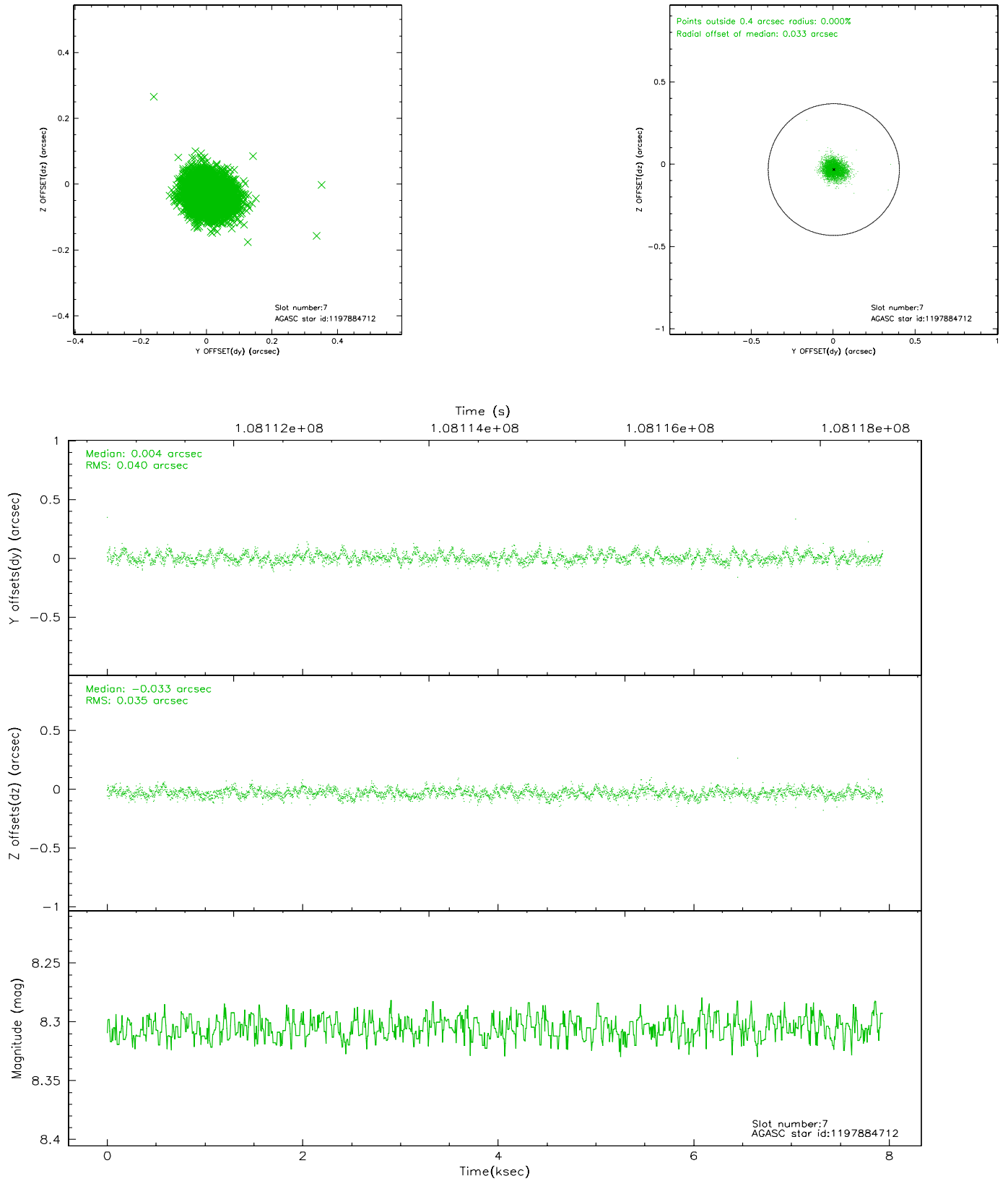
2.4.3 Slot 5



2.4.4 Slot 6

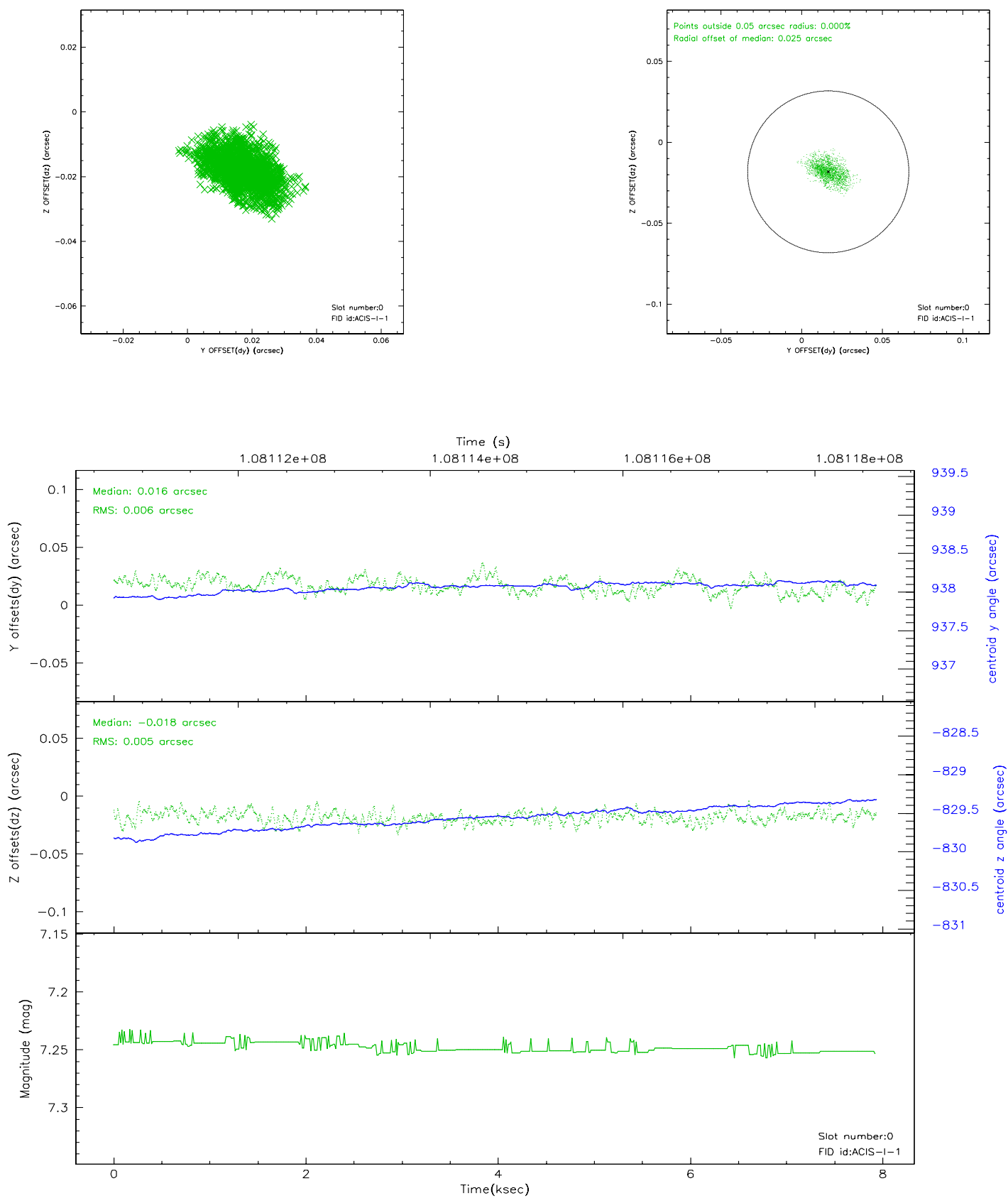


2.4.5 Slot 7

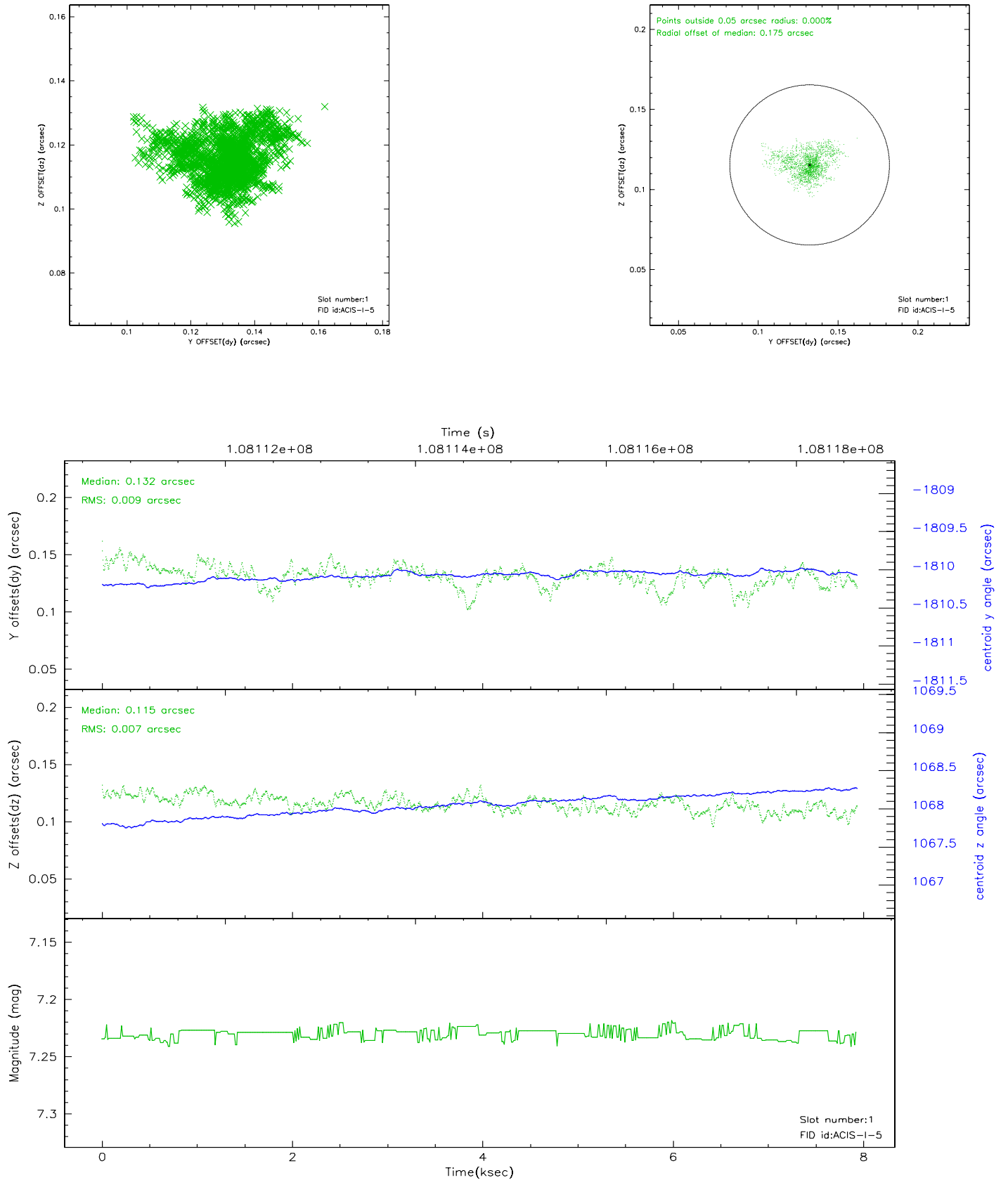


2.5 FID Slots

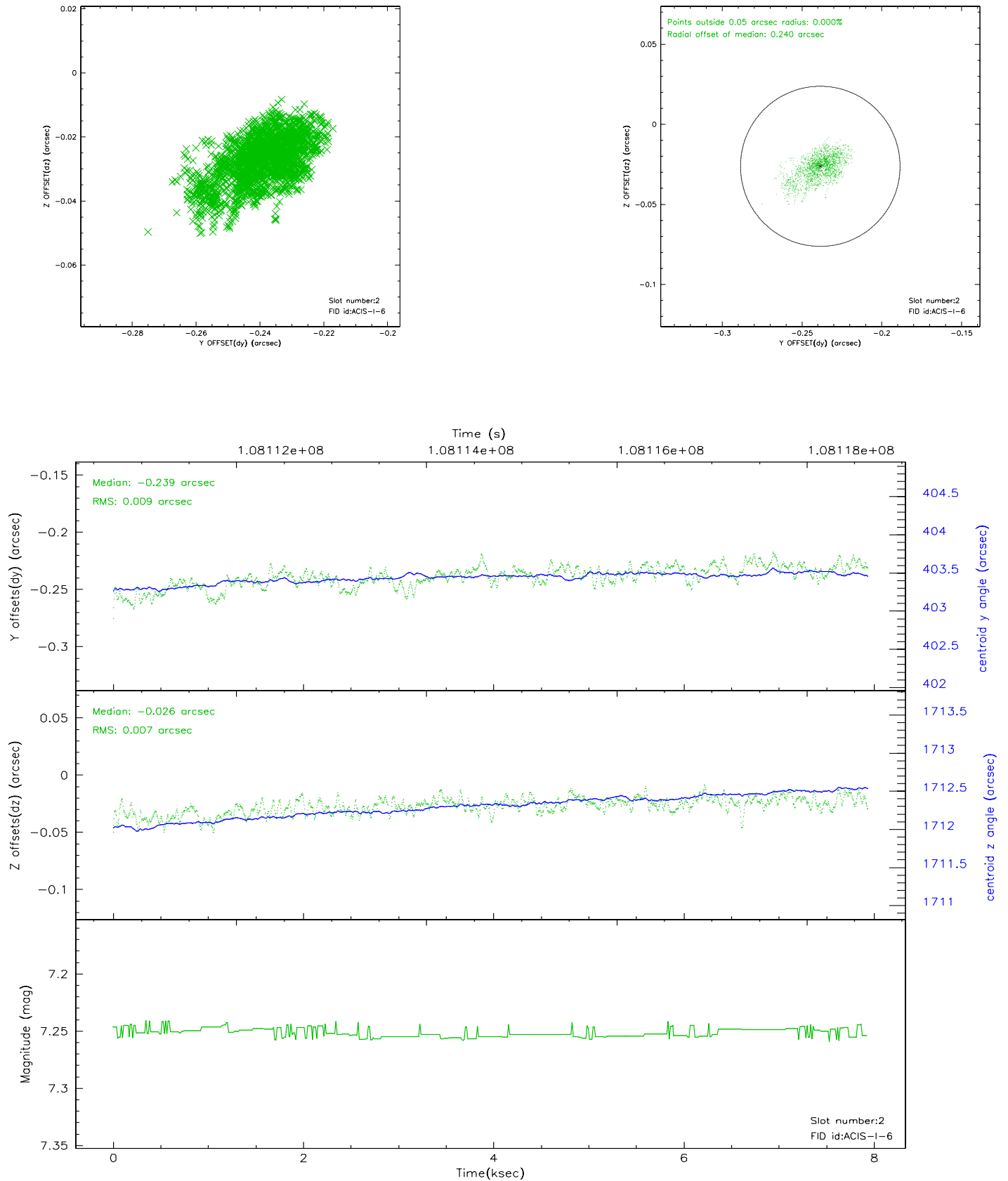
2.5.1 Slot 0



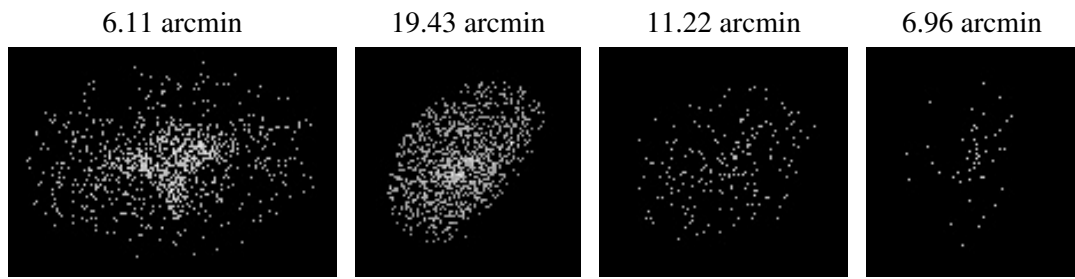
2.5.2 Slot 1



2.5.3 Slot 2



3 Point Sources



A Summary

A.1 Status

V&V Scientist	Beth Sundheim
V&V Date (YYYY-MM-DD)	2006.11.27
V&V Edition	1
V&V Disposition and Status	OK
V&V Charge Time	7.513

A.2 Comments

Window constraint OK.