

V&V Reference Report

L2 ASCDS Version : 7.6.11

Observation 1311 - L2 Version 3
Chandra X-Ray Center

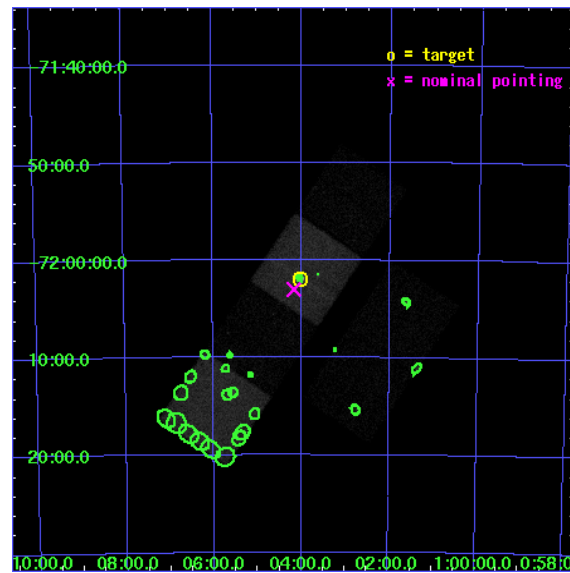
L2 Processing Date : Jul 12 2007

Contents

1	Front	2
2	OBI	3
2.1	OBI	3
2.1.1	Images	3
2.1.2	Bias	3
2.1.3	Parameters	4
2.1.4	Events	4
2.2	Compared Parameters	5
2.3	Aspect	6
2.4	Star Slots	9
2.4.1	Slot 3	9
2.4.2	Slot 4	10
2.4.3	Slot 5	11
2.4.4	Slot 6	12
2.4.5	Slot 7	13
2.5	FID Slots	14
2.5.1	Slot 0	14
2.5.2	Slot 1	15
2.5.3	Slot 2	16
3	Point Sources	17
A	Summary	18
A.1	Status	18
A.2	Comments	18

1 Front

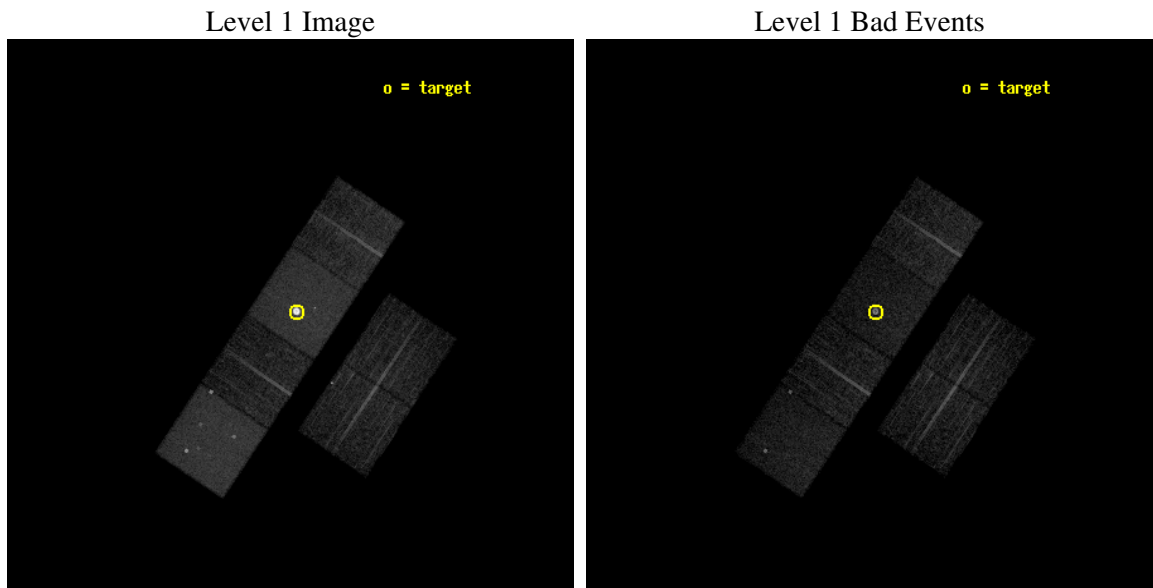
seq_num	590125
obs_id	1311
title	ACIS CALIBRATION OBSERVATION OF THE SUPERNOVA REMNANT E0102-72 (DEC 2000)
observer	Dr. CXC Calibration
object	E0102-72.3 [Chip S3, T=120, Offsets=-1,0,0]
dtcycle	0
cycle	P
ra_targ	16.01
dec_targ	-72.032028
ra_nom	16.042481516623
dec_nom	-72.050378258631
roll_nom	303.73247459753
revision	3
ontime	7753.6000072211
livetime	7655.4192552723
ontime2	7753.6000072211
ontime3	7753.6000072211
ontime5	7753.6000072211
ontime6	7753.6000072211
ontime7	7753.6000072211
ontime8	7750.3590469658
l2events	173576



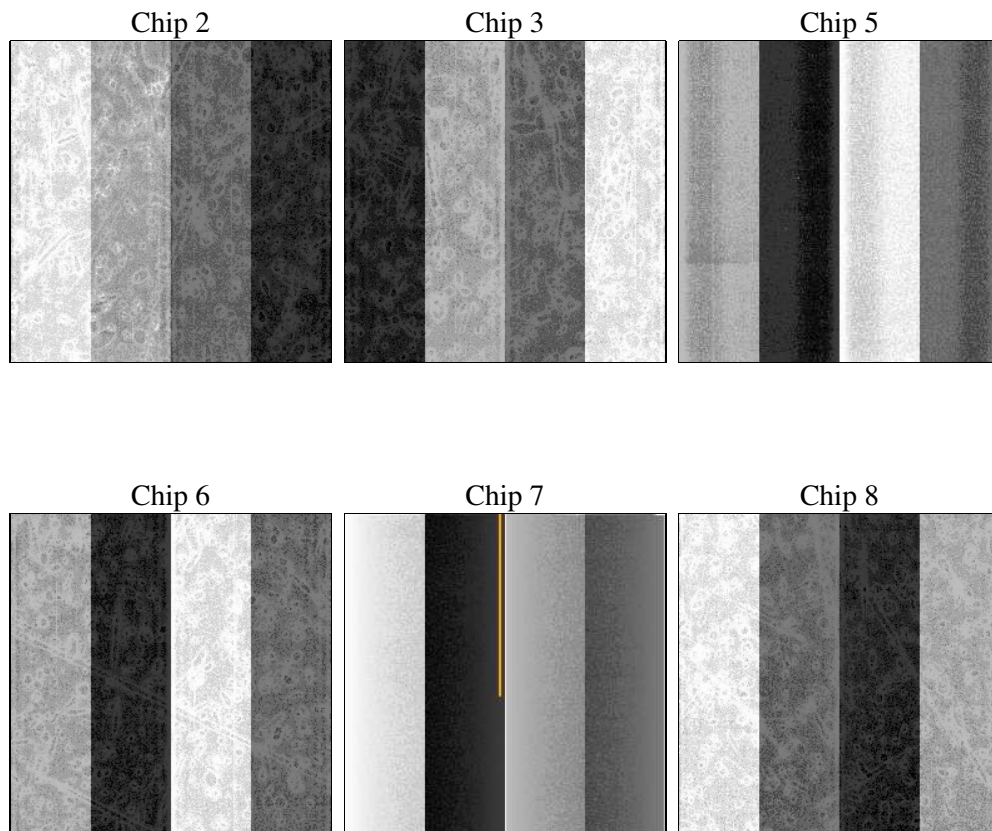
2 OBI

2.1 OBI

2.1.1 Images



2.1.2 Bias



2.1.3 Parameters

obi_num	0
ascdsver	7.6.11
caldsver	3.4.0
date	2007-07-12T21:25:10
revision	3

sched_exp_time	8000.000000
ontime	7753.6000072211
ontime2	7753.6000072211
ontime3	7753.6000072211
ontime5	7753.6000072211
ontime6	7753.6000072211
ontime7	7753.6000072211
ontime8	7750.3590469658
l1events	429947

2.1.4 Events

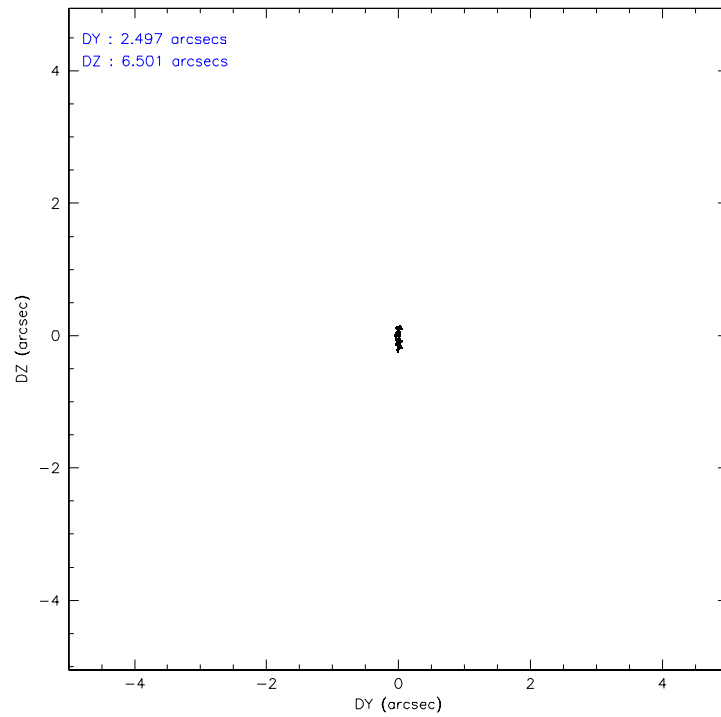
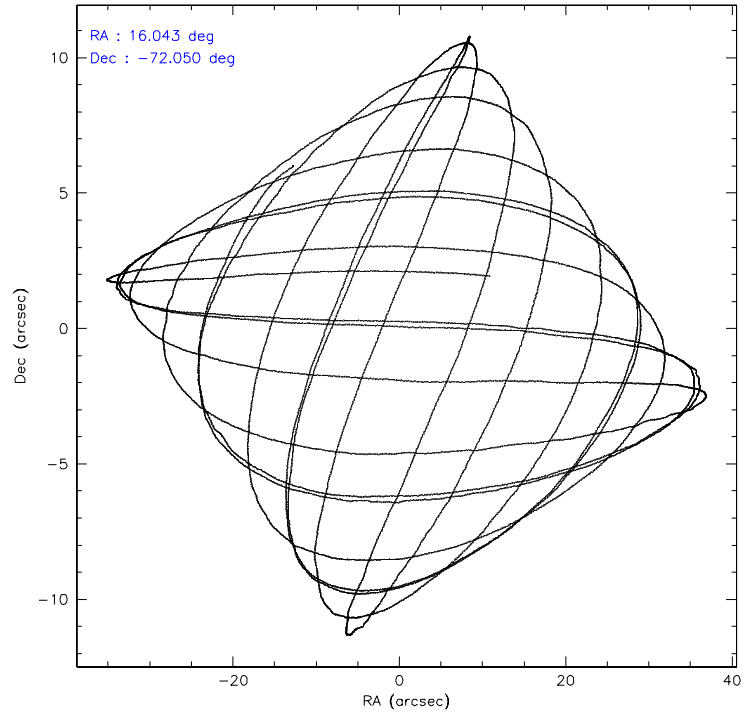
	ccd 2	ccd 3	ccd 5	ccd 6	ccd 7	ccd 8
level 1 events	48374	43669	84417	46784	146232	60471
rejected events	42225	38007	37104	40174	37179	48523
rejected %	87%	87%	43%	85%	25%	80%

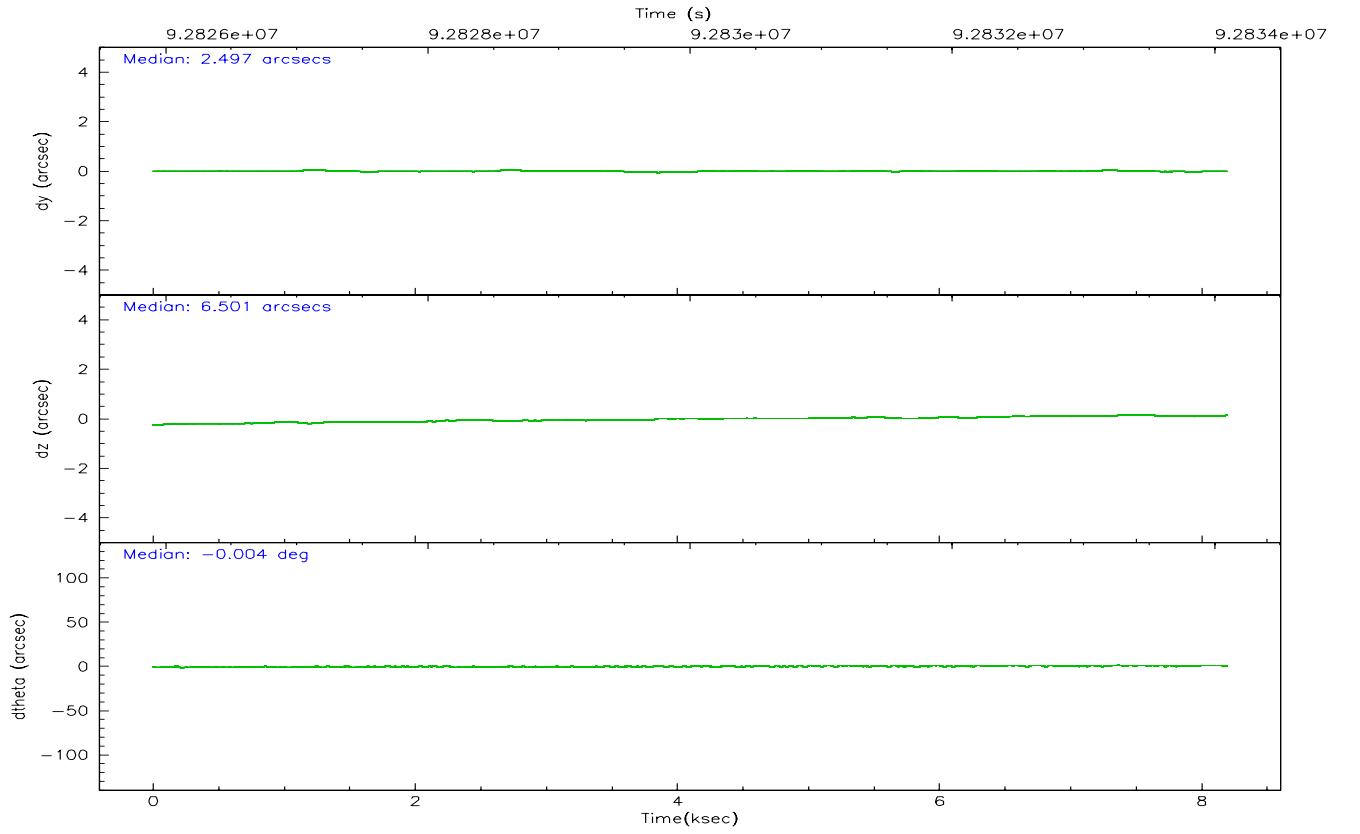
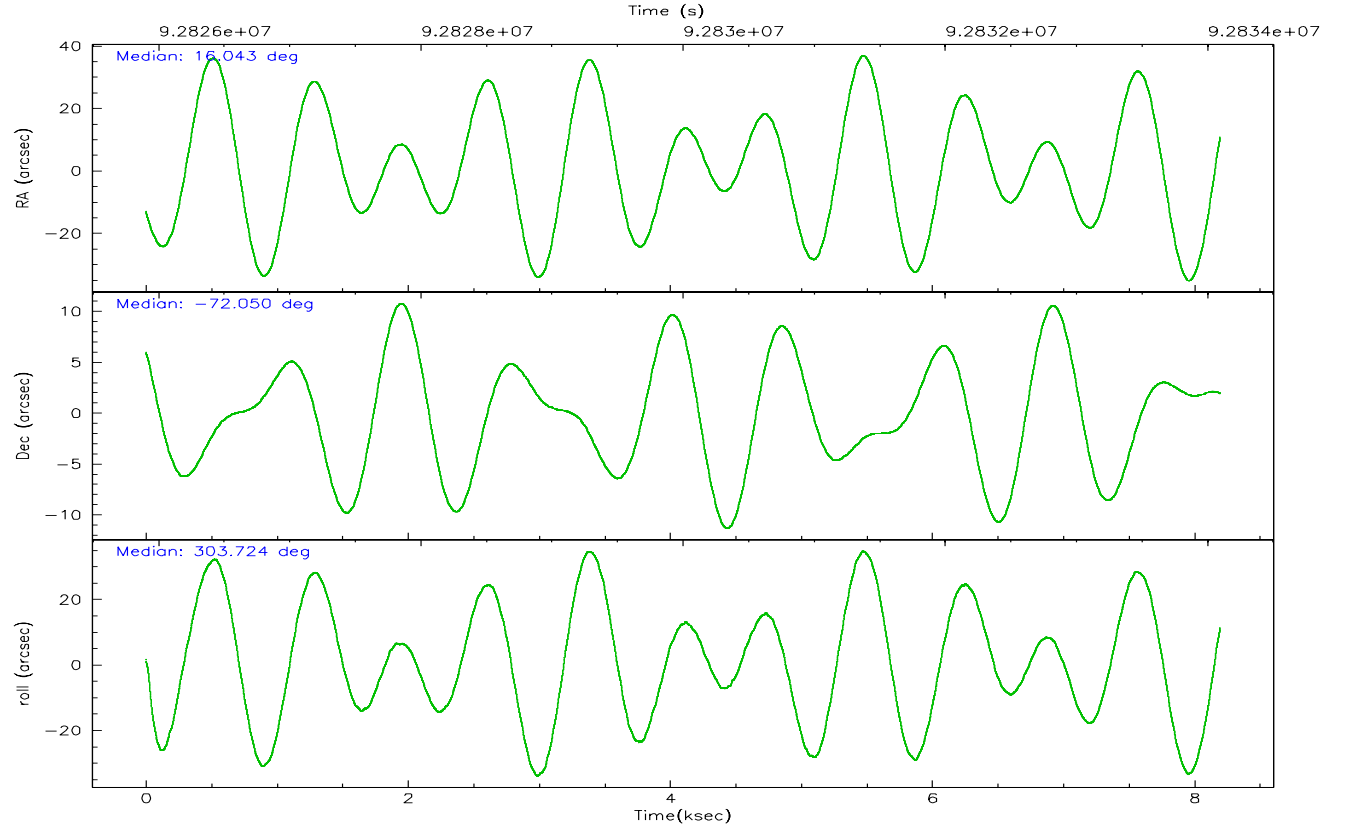
	ccd 2	ccd 3	ccd 5	ccd 6	ccd 7	ccd 8
grade 0 events	2958	2641	7609	3325	30340	4137
	6%	6%	9%	7%	20%	6%
grade 1 events	35	15	325	20	701	53
	0%	0%	0%	0%	0%	0%
grade 2 events	1210	1100	13688	1163	25878	2379
	2%	2%	16%	2%	17%	3%
grade 3 events	508	511	2520	556	11615	1369
	1%	1%	2%	1%	7%	2%
grade 4 events	523	461	2458	536	11618	1229
	1%	1%	2%	1%	7%	2%
grade 5 events	1467	1649	5317	1912	6952	2321
	3%	3%	6%	4%	4%	3%
grade 6 events	956	957	21168	1042	29804	2837
	1%	2%	25%	2%	20%	4%
grade 7 events	40717	36335	31332	38230	29324	46146
	84%	83%	37%	81%	20%	76%

2.2 Compared Parameters

Parameter	Planned	Actual	Parameter	Planned	Actual
Instrument	ACIS	ACIS	Obspar format version number	6	6
Detector	ACIS-235678	ACIS-235678	Obspar file type	PREDICTED	ACTUAL
Grating	NONE	NONE	Obspar update status	NONE	UPDATED
Data mode	FAINT	FAINT	Number of optional ACIS chips dropped	0	0
Observation mode	POINTING	POINTING	On-chip summing requested	N	N
Pointing RA	15.962876	16.04248151662329	Subarray requested	NONE	NONE
Pointing Dec	-72.038444	-72.05037825863079	Alternating exposures requested	N	N
Pointing Roll	303.500120	303.73247459753	Primary exposure time	0.000000	3.2
Window start time	92016064.184000	92016064.184000			
Window stop time	94608064.184000	94608064.184000			
SIM focus pos (mm)	-0.684267	-0.6828225247311905			
SIM defocus (mm)	0	0.001444936568705701			
SIM translation stage pos (mm)	-190.132523	-190.1400660498719			
SIM translation stage offset (mm)	0	0.00754346686406393			
Observation start time	92826098.184000	92825722.129777			
Observation start date	2000-12-10T09:00:34	2000-12-10T08:55:22			
Observation end time	92834098.184000	92834231.68010201			
Observation end date	2000-12-10T11:13:54	2000-12-10T11:17:11			
Read mode	TIMED	TIMED			

2.3 Aspect



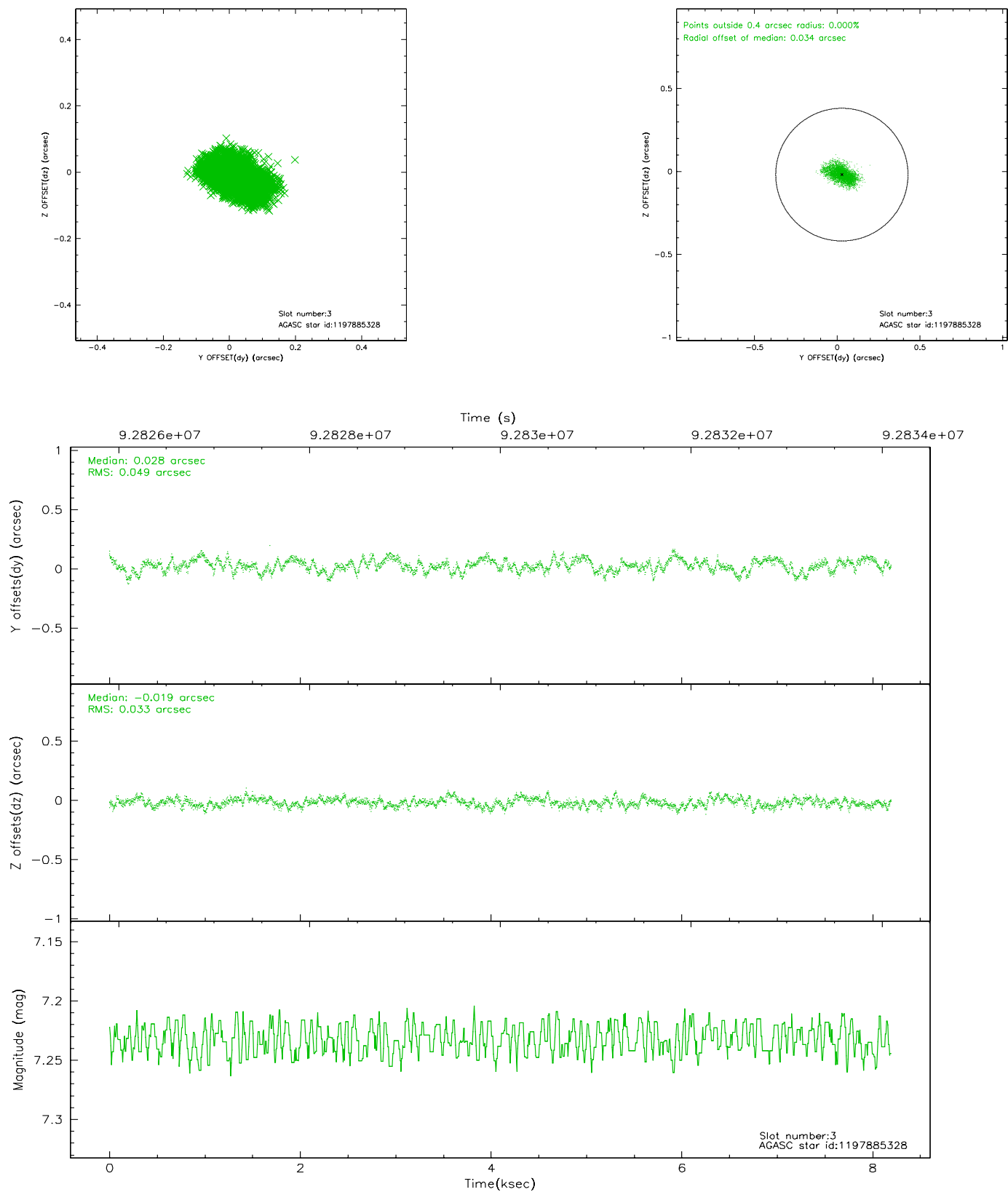


Slot Statistics

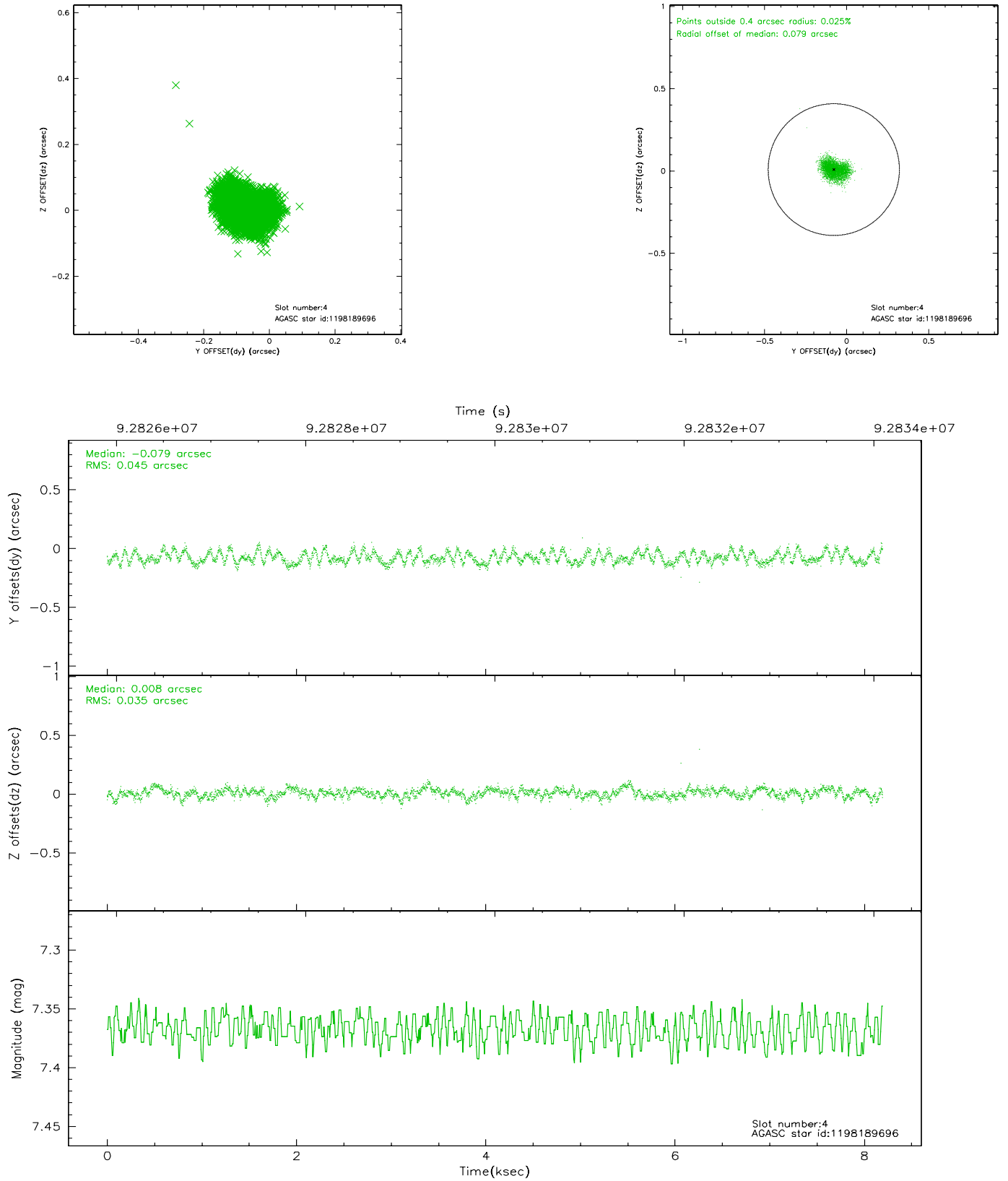
slot	status	id	mag	n_pts	med_dy	med_dz	dr1	dr2	ra	dec	mean_y	mean_z
0	FID	ACIS-S-2	7.12	1999	-0.019	0.022	0.007	0.011	0.000000	0.000000	-755.14	-1727.61
1	FID	ACIS-S-4	7.20	1998	-0.053	0.003	0.005	0.009	0.000000	0.000000	2157.79	180.16
2	FID	ACIS-S-5	7.23	1998	0.042	-0.016	0.007	0.010	0.000000	0.000000	-1807.05	174.57
3	GUIDE	1197885328	7.23	3998	0.028	-0.019	0.064	0.103	16.283090	-71.733943	-714.40	905.62
4	GUIDE	1198189696	7.37	3999	-0.079	0.008	0.062	0.095	15.223750	-72.697522	1545.50	-1971.91
5	GUIDE	1197750936	7.56	3999	-0.050	-0.070	0.053	0.085	15.387940	-71.549550	-1826.70	422.46
6	GUIDE	1197884536	8.49	3998	0.050	0.064	0.067	0.106	17.160729	-71.835289	142.17	1517.27
7	GUIDE	1197749416	10.28	3995	0.045	0.017	0.136	0.214	13.610513	-71.871242	-1913.15	-1892.93

2.4 Star Slots

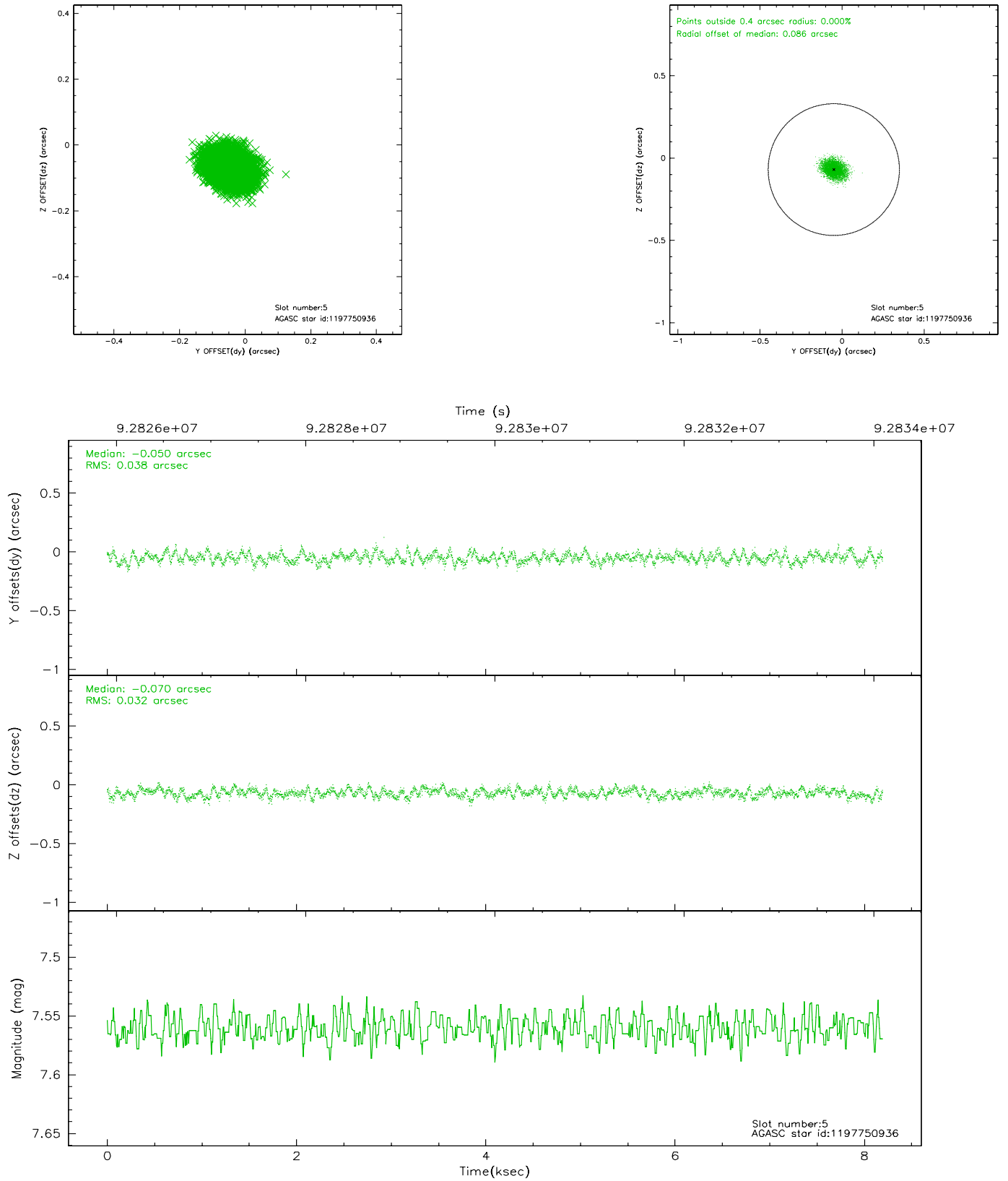
2.4.1 Slot 3



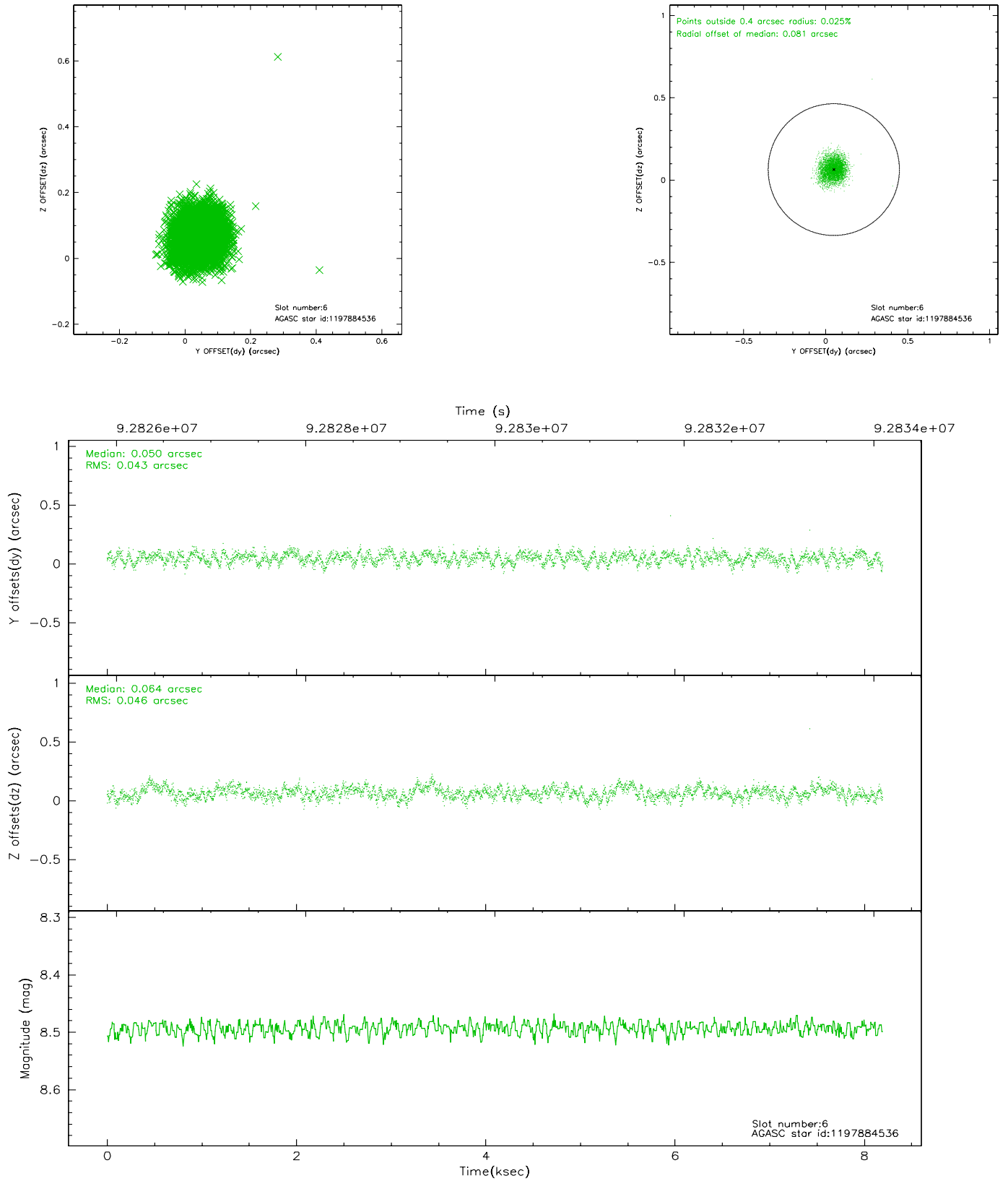
2.4.2 Slot 4



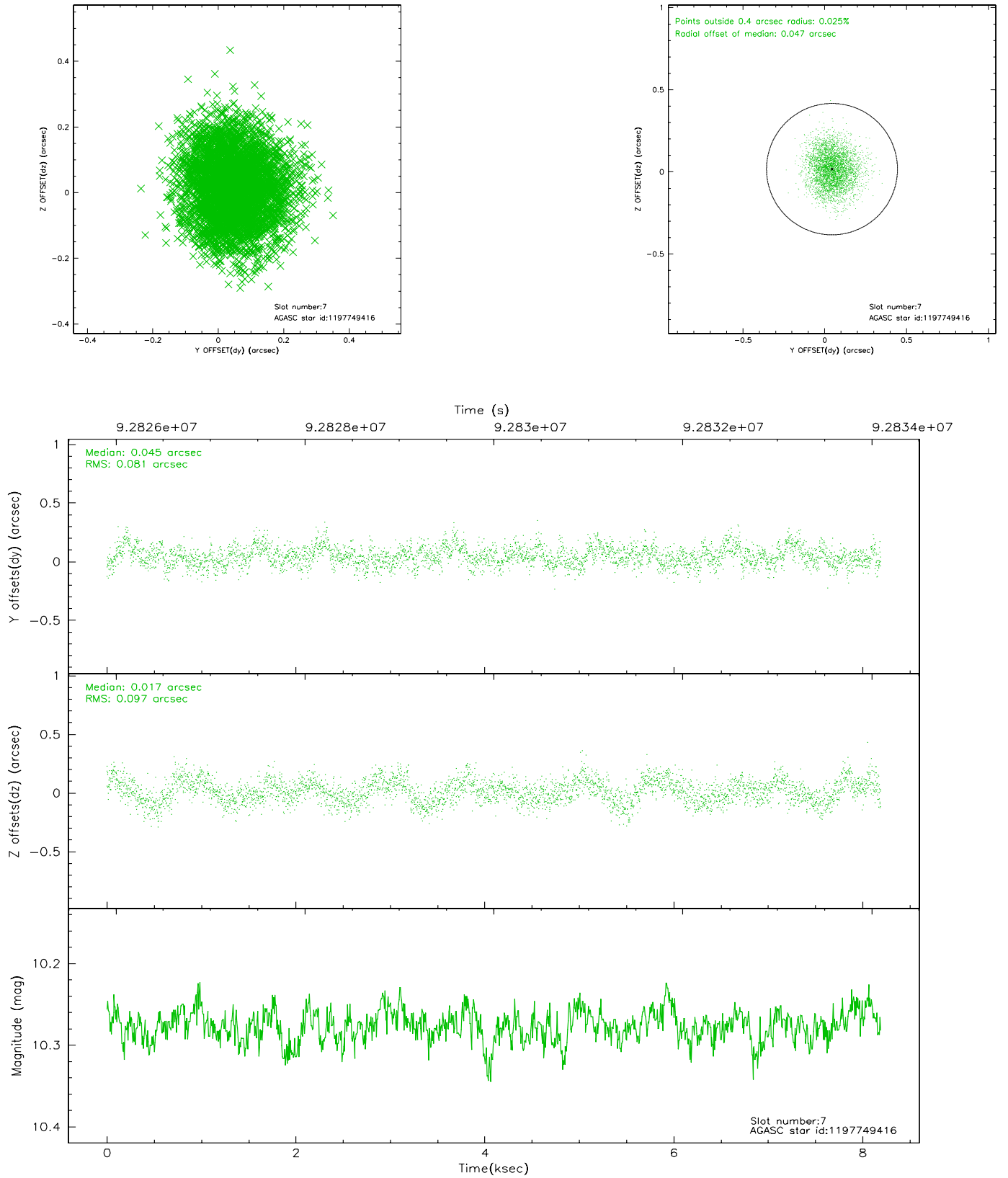
2.4.3 Slot 5



2.4.4 Slot 6

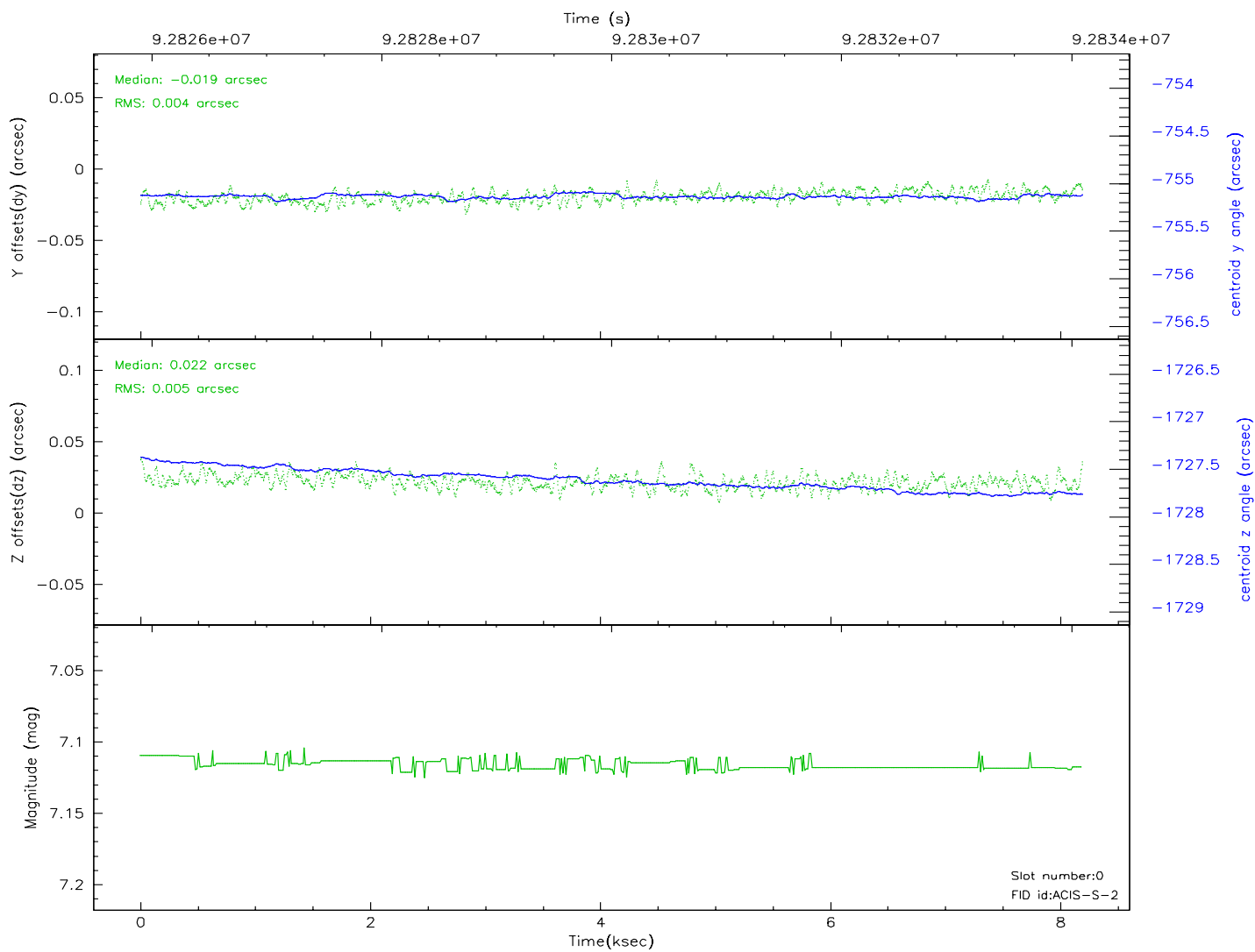
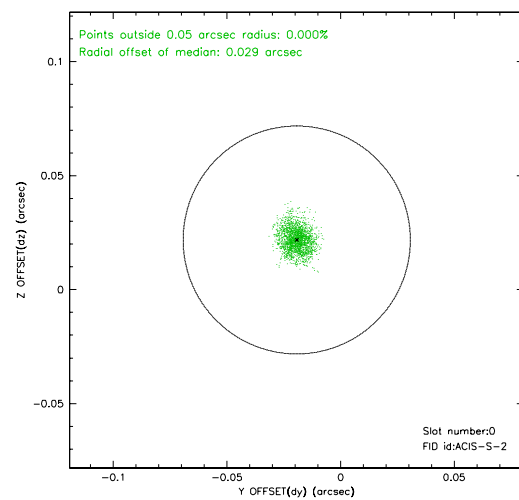
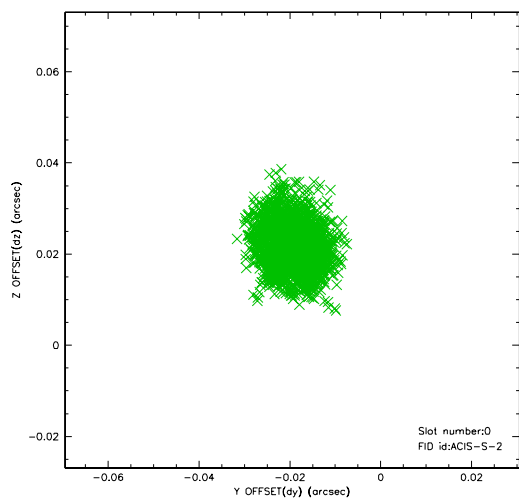


2.4.5 Slot 7

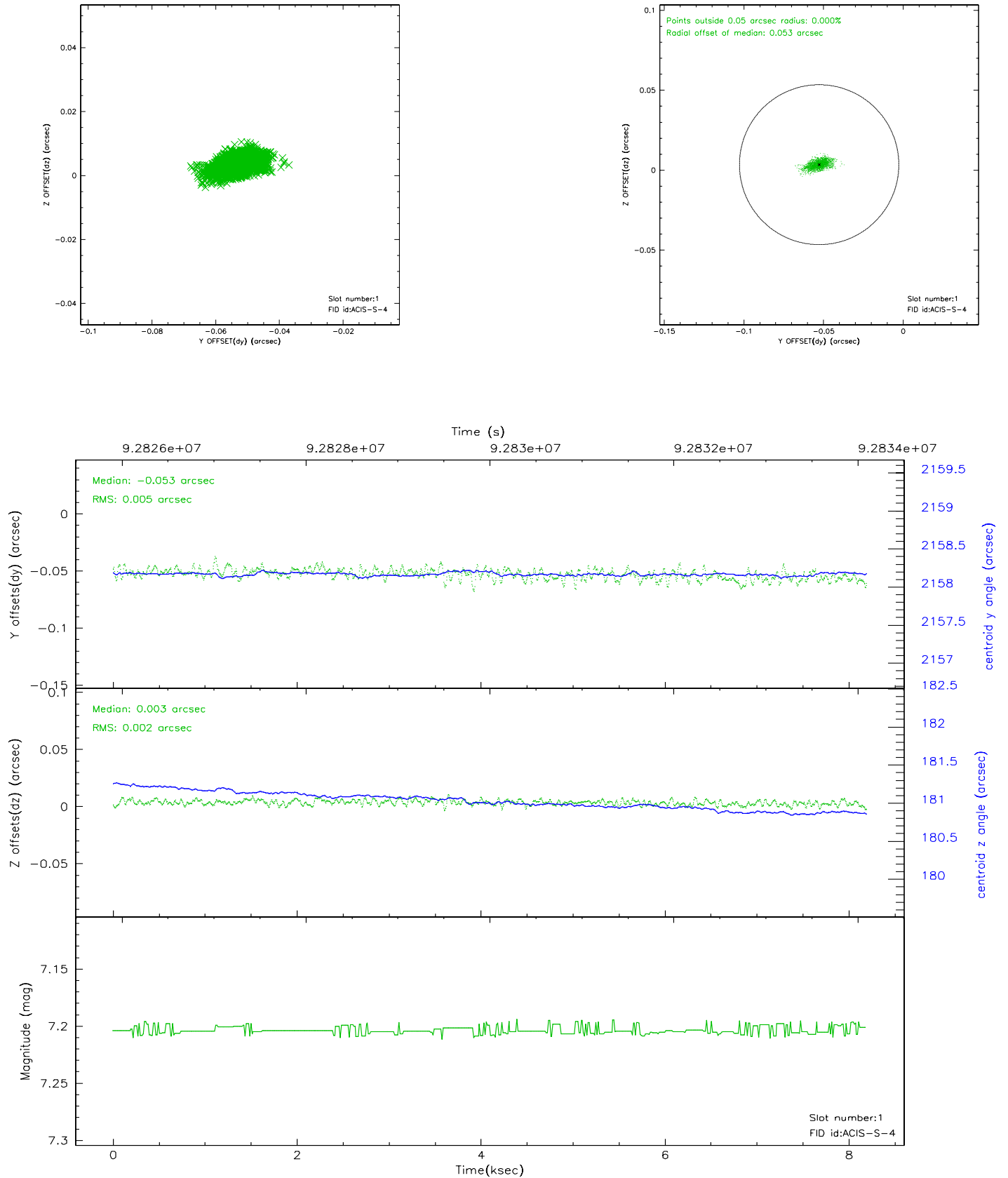


2.5 FID Slots

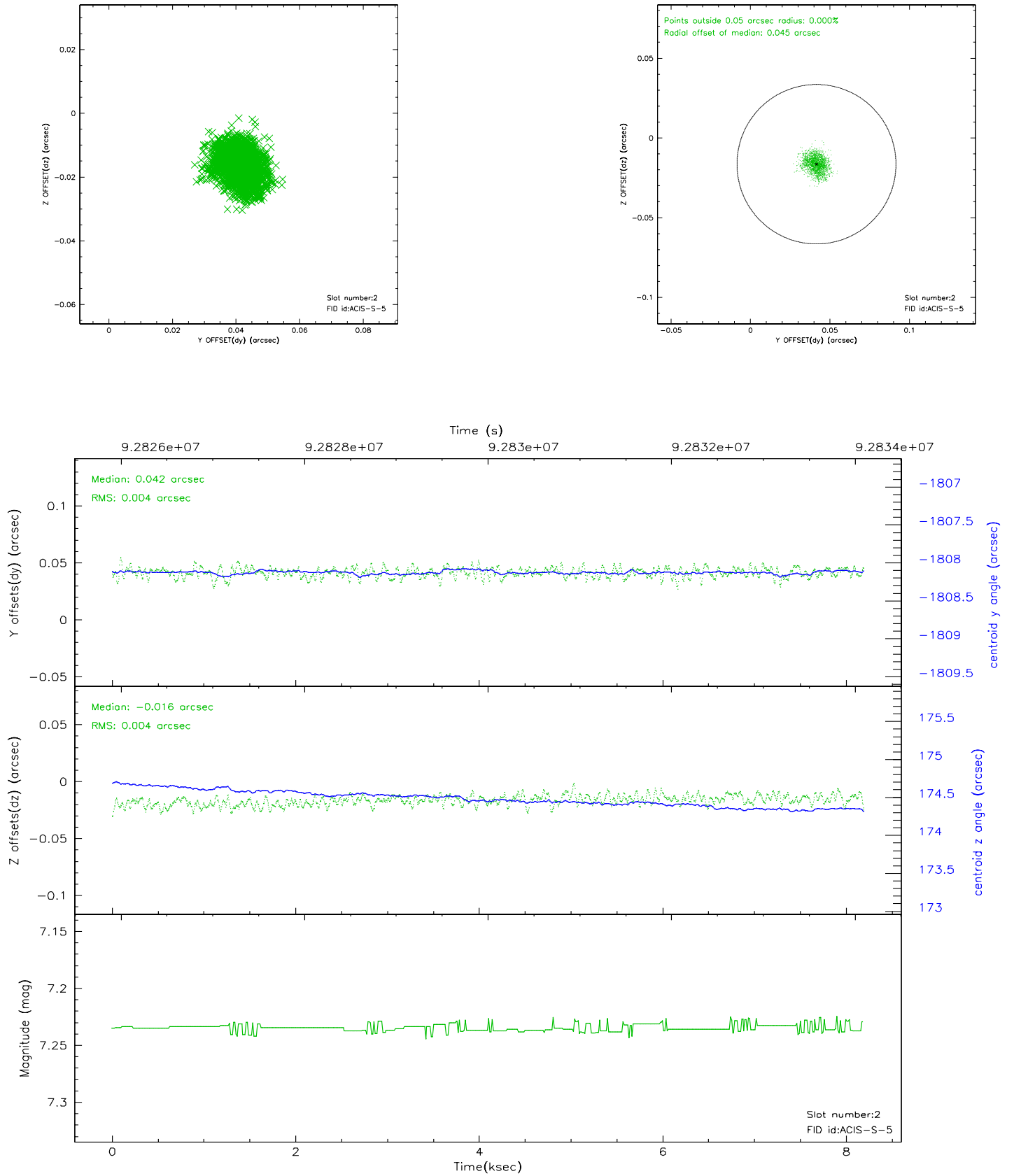
2.5.1 Slot 0



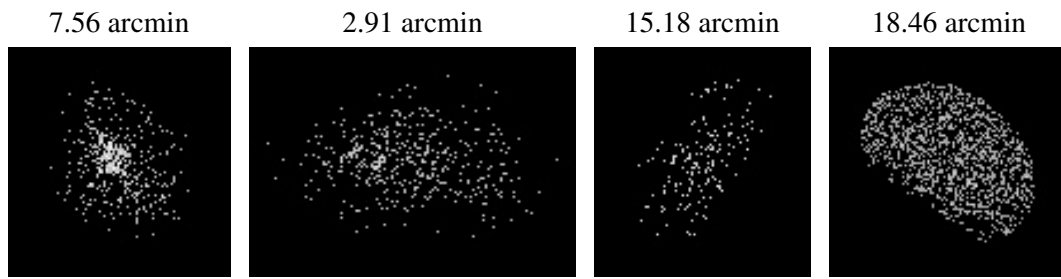
2.5.2 Slot 1



2.5.3 Slot 2



3 Point Sources



A Summary

A.1 Status

V&V Scientist	Joy Nichols
V&V Date (YYYY-MM-DD)	2010.10.01
V&V Edition	2
V&V Disposition and Status	OK
V&V Charge Time	7.8

A.2 Comments

Charge time for this ObsId remains at original value of 7.8 ks, although with the current processing the charge time would have been 7.75 ksec.===
There are 2 observations with the obsid 1311. They appear in separate spacecraft loads with these duplicate numbers. Because the 2 obsids used different instrument configurations, the telemetry file of the first obsid 1311 was edited to create a new obsid number, obsid 62864. This obsid retains the 1311 designation.