

# V&V Reference Report

## L2 ASCDS Version : 8.4.5

Observation 1801 - L2 Version 6  
Chandra X-Ray Center

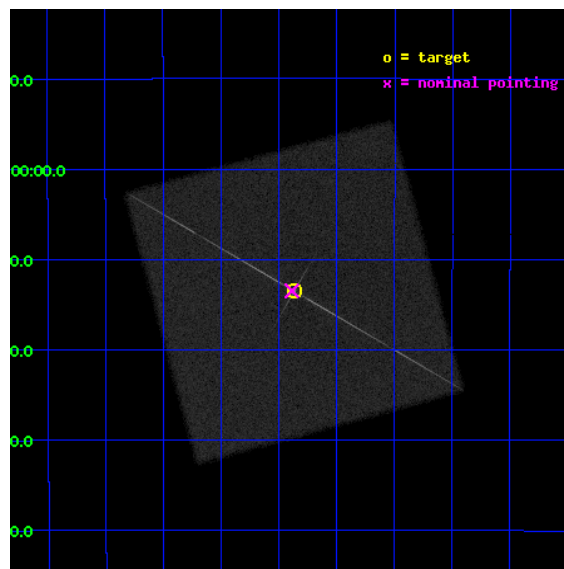
L2 Processing Date : Aug 31 2012

## Contents

<b>1</b>	<b>Front</b>	<b>2</b>
<b>2</b>	<b>OBI</b>	<b>3</b>
2.1	OBI . . . . .	3
2.1.1	Images . . . . .	3
2.1.2	Parameters . . . . .	4
2.1.3	Events . . . . .	4
2.2	Compared Parameters . . . . .	5
2.3	Aspect . . . . .	6
2.4	Star Slots . . . . .	9
2.4.1	Slot 3 . . . . .	9
2.4.2	Slot 4 . . . . .	10
2.4.3	Slot 5 . . . . .	11
2.4.4	Slot 6 . . . . .	12
2.4.5	Slot 7 . . . . .	13
2.5	FID Slots . . . . .	14
2.5.1	Slot 0 . . . . .	14
2.5.2	Slot 1 . . . . .	15
2.5.3	Slot 2 . . . . .	16
<b>3</b>	<b>Gratings</b>	<b>17</b>
3.1	LETG Arm . . . . .	17
<b>A</b>	<b>Summary</b>	<b>19</b>
A.1	Status . . . . .	19
A.2	Comments . . . . .	19

# 1 Front

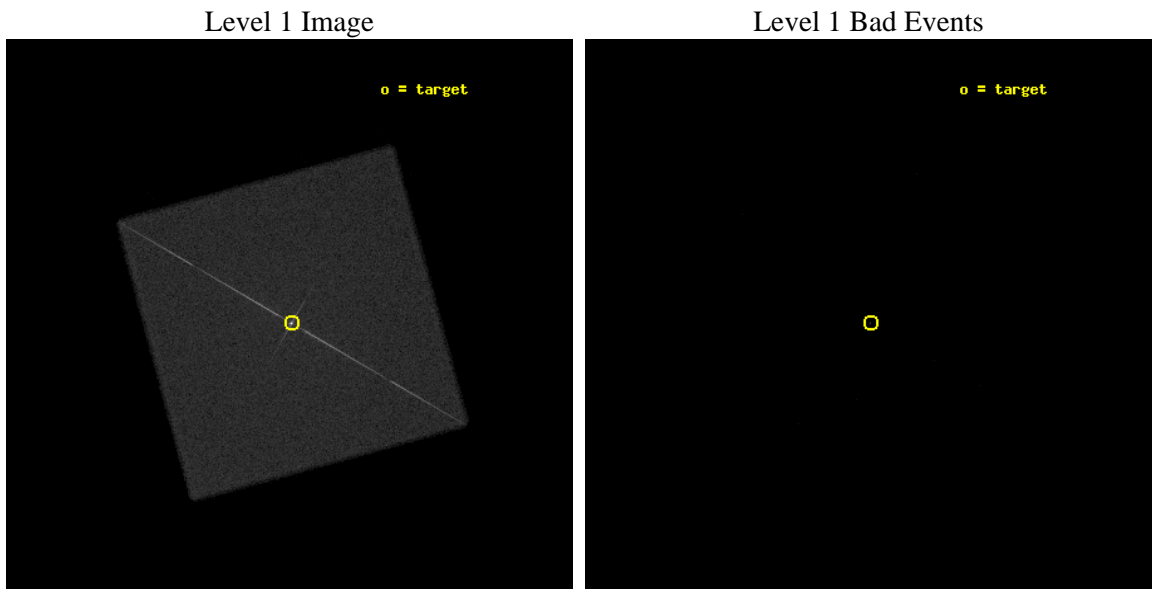
seq_num	390019	Sequence number
obs_id	1801	Observation id
title	GRATINGS CALIBRATION OBSERVATIONS OF PKS2155-304	Proposal title
observer	Dr. CXC Calibration	Principal investigator
object	PKS2155-304	Source name
ra_targ	329.716667	Observer's specified target RA [deg]
dec_targ	-30.225556	Observer's specified target Dec [deg]
ra_nom	329.72186774248	Nominal RA [deg]
dec_nom	-30.224951491146	Nominal Dec [deg]
roll_nom	29.834586852796	Nominal Roll [deg]
revision	6	Processing version of data
ontime	13791.375515252	[s]
livetime	13730.054171137	Ontime multiplied by DTCOR
l2events	346534	Number of level 2 events



## 2 OBI

### 2.1 OBI

#### 2.1.1 Images



### 2.1.2 Parameters

obi_num	0	Obi number	sched_exp_time	10000.000000	[s] Scheduled observation exposure time
ascdsver	8.4.5	Processing system revision	ontime	13791.375515252	[s]
caldsver	4.5.1.1	&#160	l1events	501338	Number of level 1 events
date	2012-08-31T12:31:46	Date and time of file creation			
revision	6	Processing version of data			

### 2.1.3 Events

#### Level 1 Events

	<b>segment 0</b>
level 1 events	501338
rejected events	1653
rejected %	0%

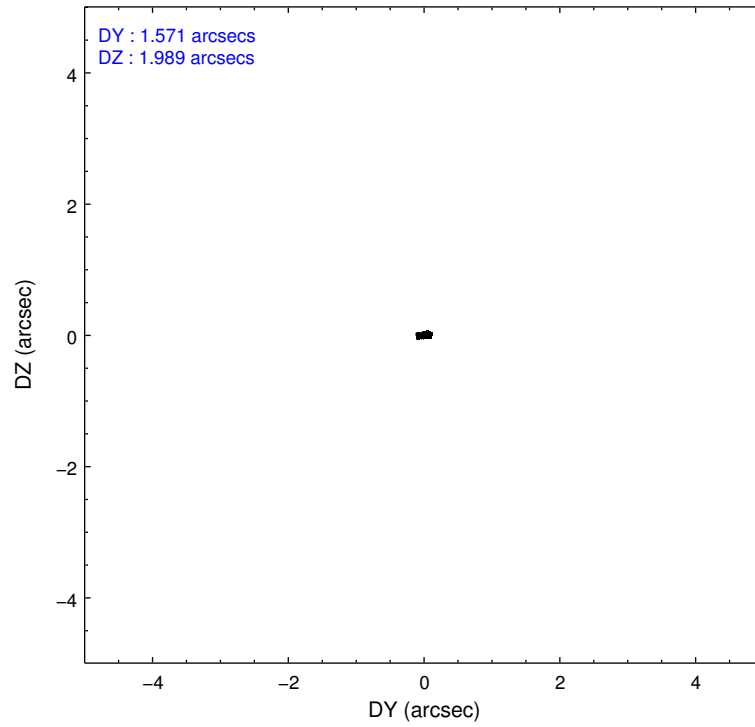
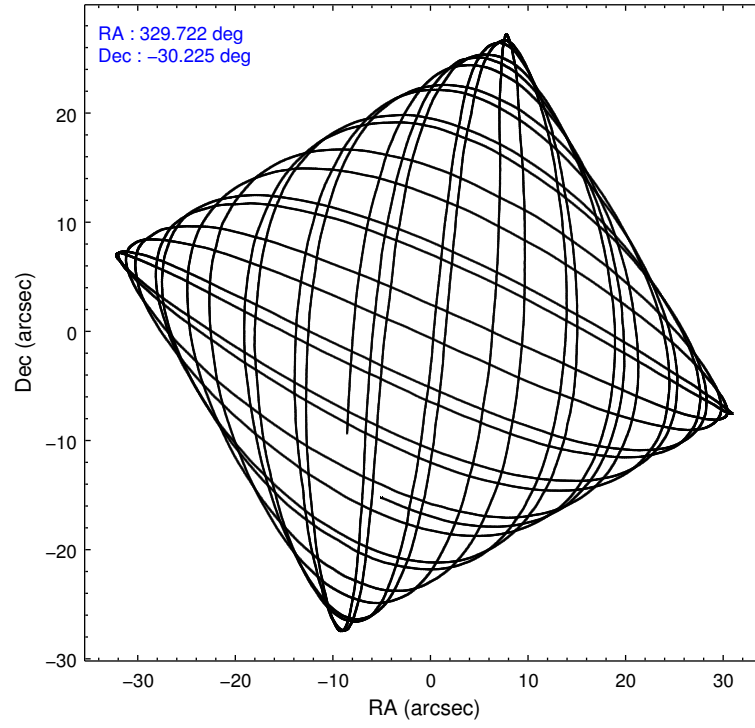


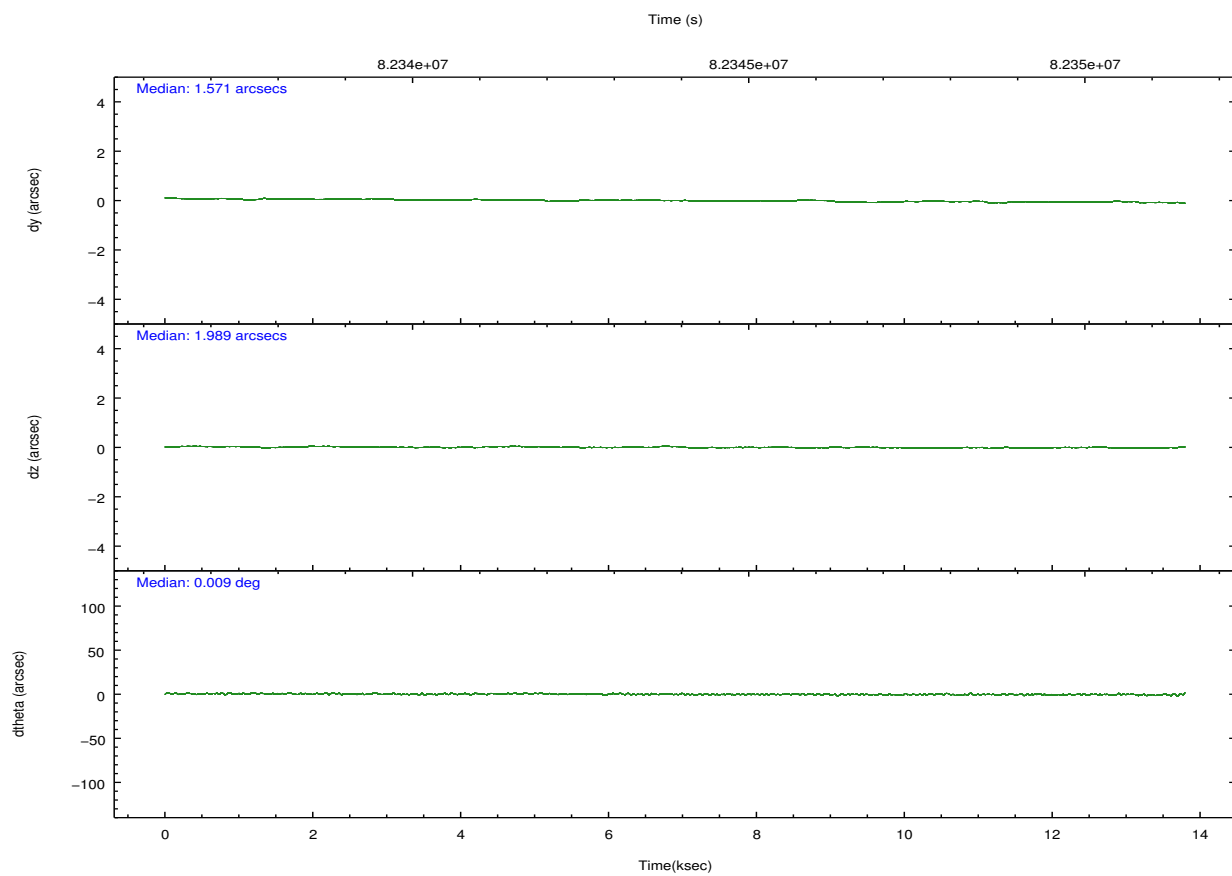
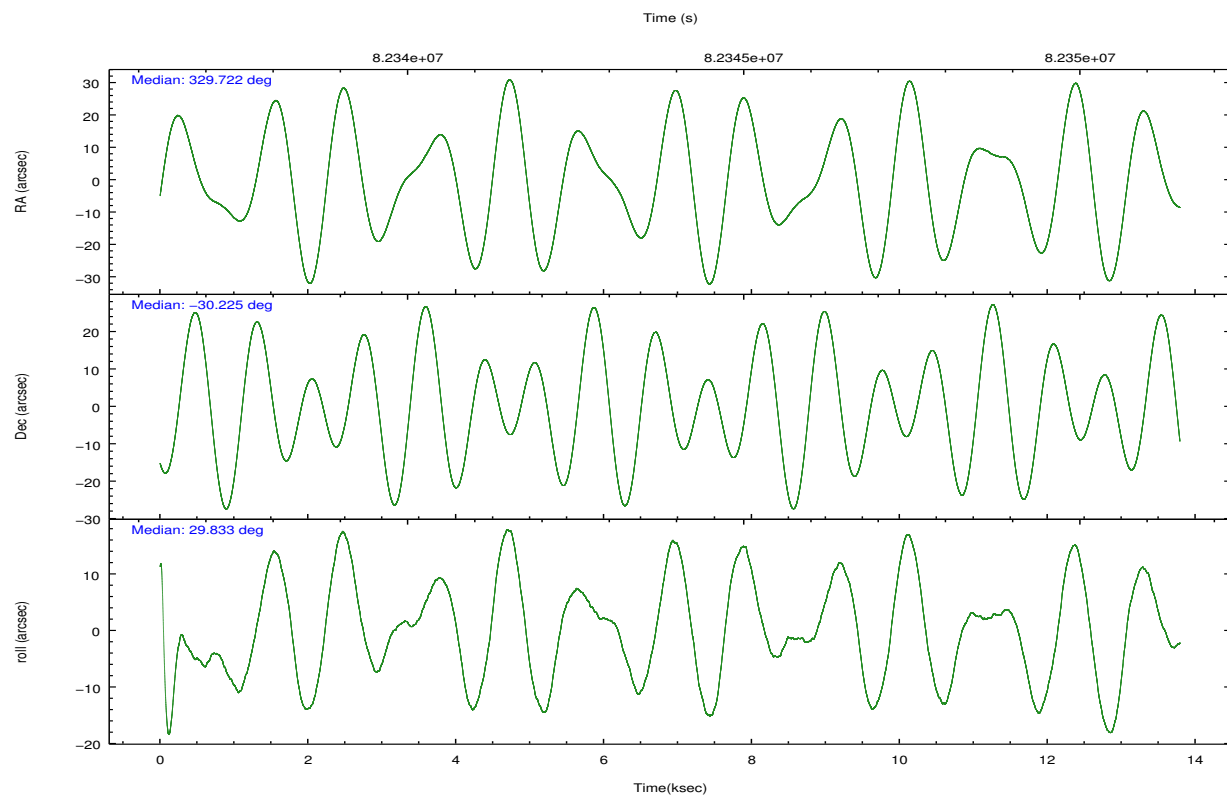
## 2.2 Compared Parameters

Parameter	Planned	Actual
Instrument	HRC	HRC
Detector	HRC-I	HRC-I
Grating	LETG	LETG
Data mode	OBSERVING	OBSERVING
Observation mode	POINTING	POINTING
[deg] Pointing RA	329.706317	329.7218677424796
[deg] Pointing Dec	-30.248779	-30.22495149114633
[deg] Pointing Roll	29.922244	29.83458685279592
[mm] SIM focus pos	-1.040293	-1.038866356238299
[mm] SIM defocus	0	0.001426264420575141
[mm] SIM translation stage pos	126.985494	126.9829799899862
[mm] SIM translation stage offset	0	0.002508901615314585
[s] Observation start time (MET)	82337203.184000	82336827.545991
Observation start date	2000-08-10T23:25:39	2000-08-10T23:20:27
[s] Observation end time (MET)	82347203.184000	82351015.59652101
Observation end date	2000-08-11T02:12:19	2000-08-11T03:16:55

Parameter	Planned	Actual
Obspar format version number	7	7
Obspar file type	PREDICTED	ACTUAL
Obspar update status	NONE	UPDATED

## 2.3 Aspect



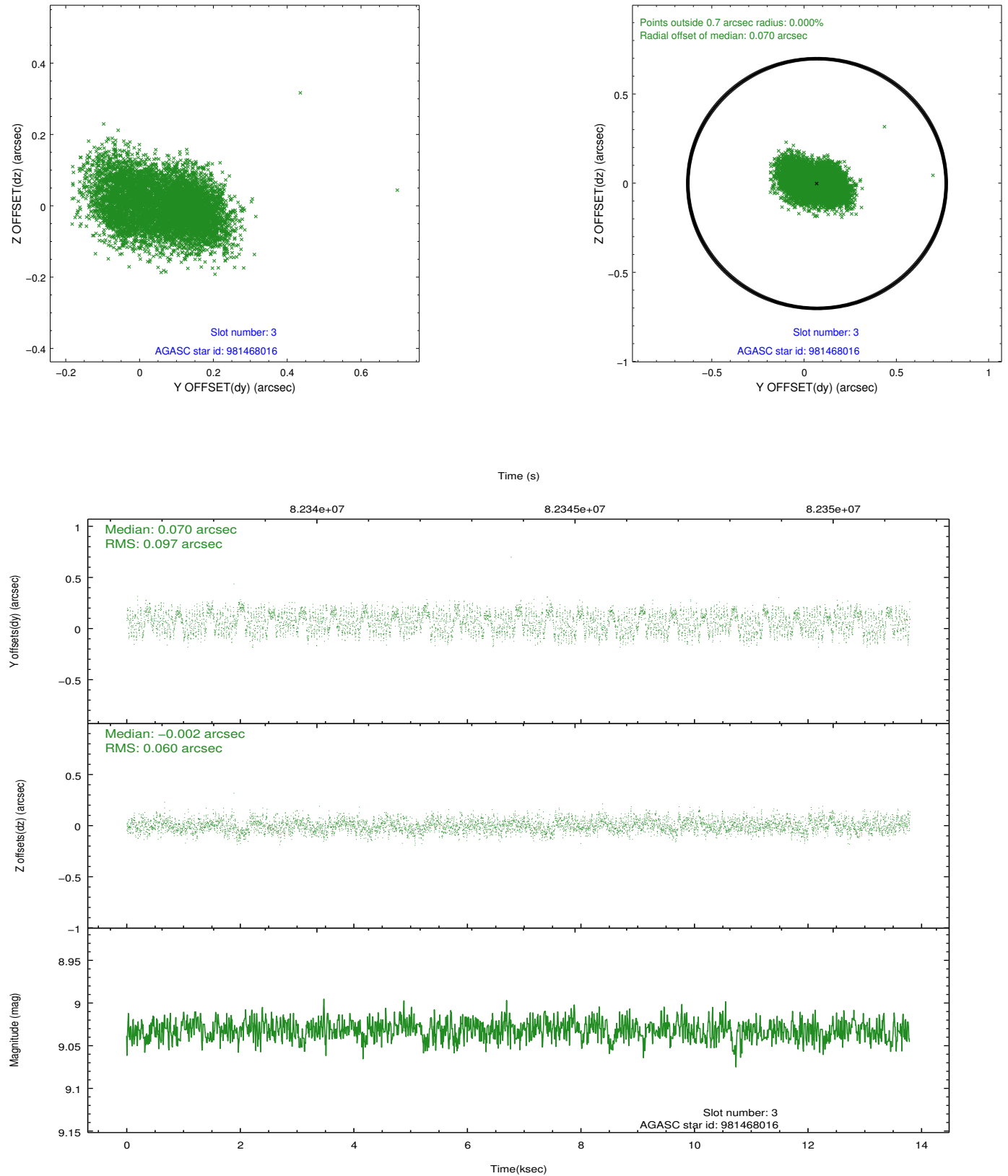


### Slot Statistics

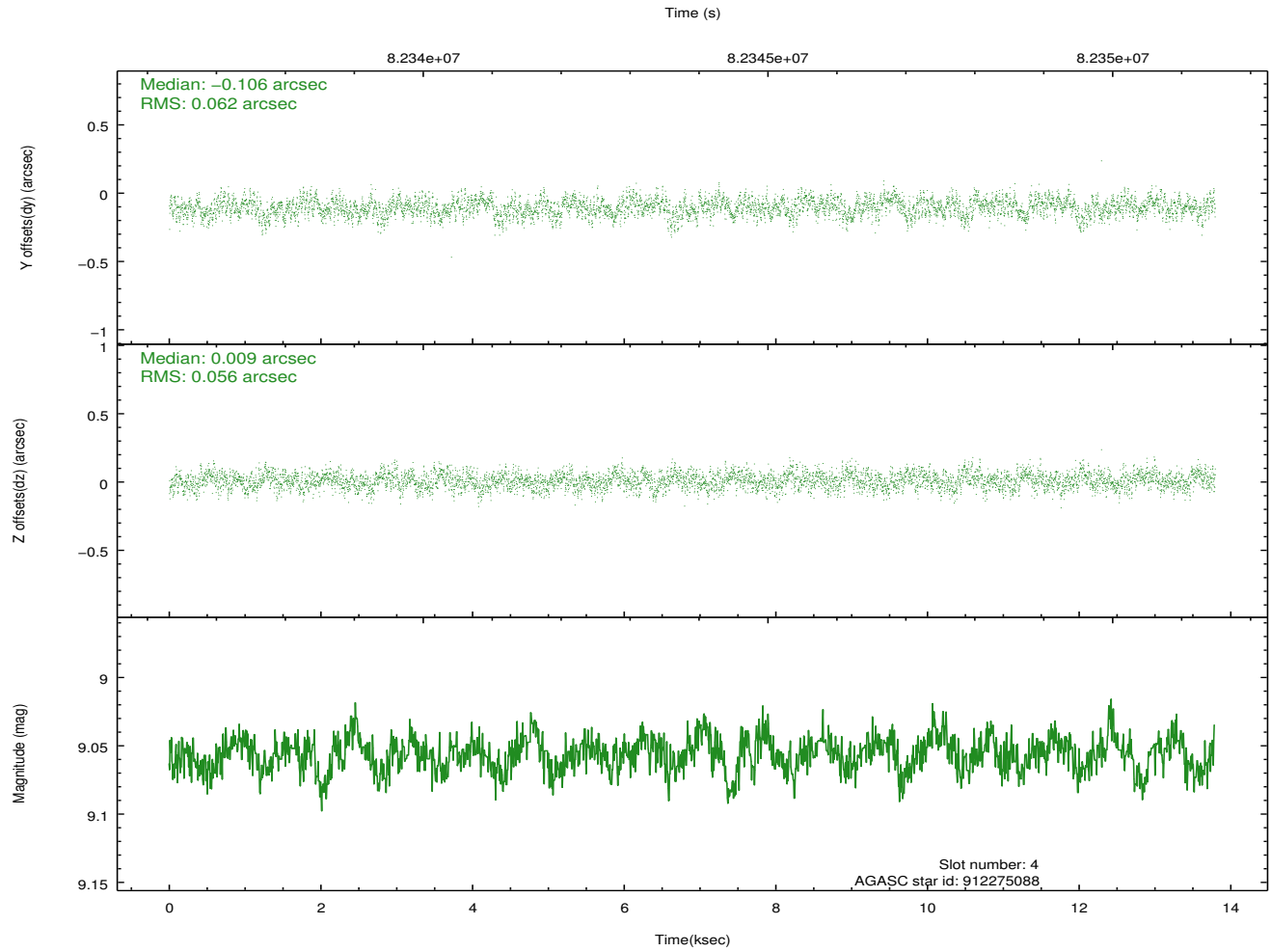
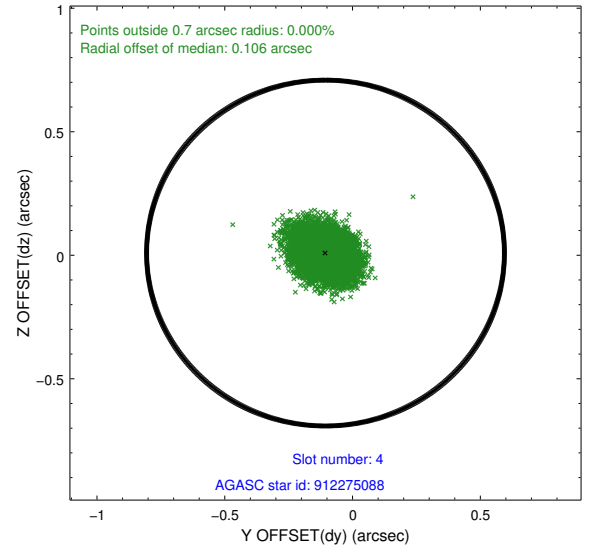
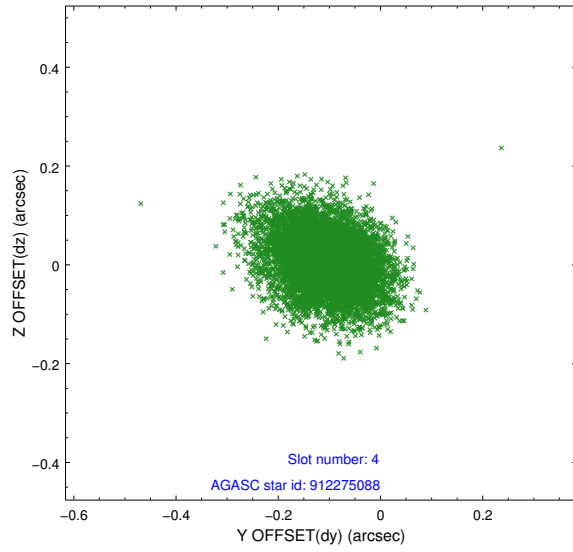
slot	status	id	mag	n_pts	med_dy	med_dz	dr1	dr2	ra	dec	mean_y	mean_z
0	FID	HRC-I-1	6.96	3364	0.047	-0.030	0.012	0.018	0.000000	0.000000	-756.98	-1289.71
1	FID	HRC-I-2	7.01	3364	0.039	-0.011	0.008	0.013	0.000000	0.000000	855.42	-1291.67
2	FID	HRC-I-4	7.00	3364	0.031	-0.051	0.015	0.021	0.000000	0.000000	1286.09	1012.02
3	GUIDE	981468016	9.03	6725	0.070	-0.002	0.123	0.190	328.842457	-30.034984	-1954.97	2001.65
4	GUIDE	912275088	9.06	6728	-0.106	0.009	0.089	0.144	329.619228	-29.738698	679.21	1728.03
5	GUIDE	981478152	9.41	6729	0.034	0.029	0.080	0.134	329.415589	-30.057192	-441.90	1049.39
6	GUIDE	981468128	9.36	6725	-0.001	-0.029	0.090	0.148	329.756350	-30.158334	296.98	205.07
7	GUIDE	981469488	9.61	6727	0.009	-0.009	0.108	0.178	329.261199	-30.045155	-838.23	1325.38

## 2.4 Star Slots

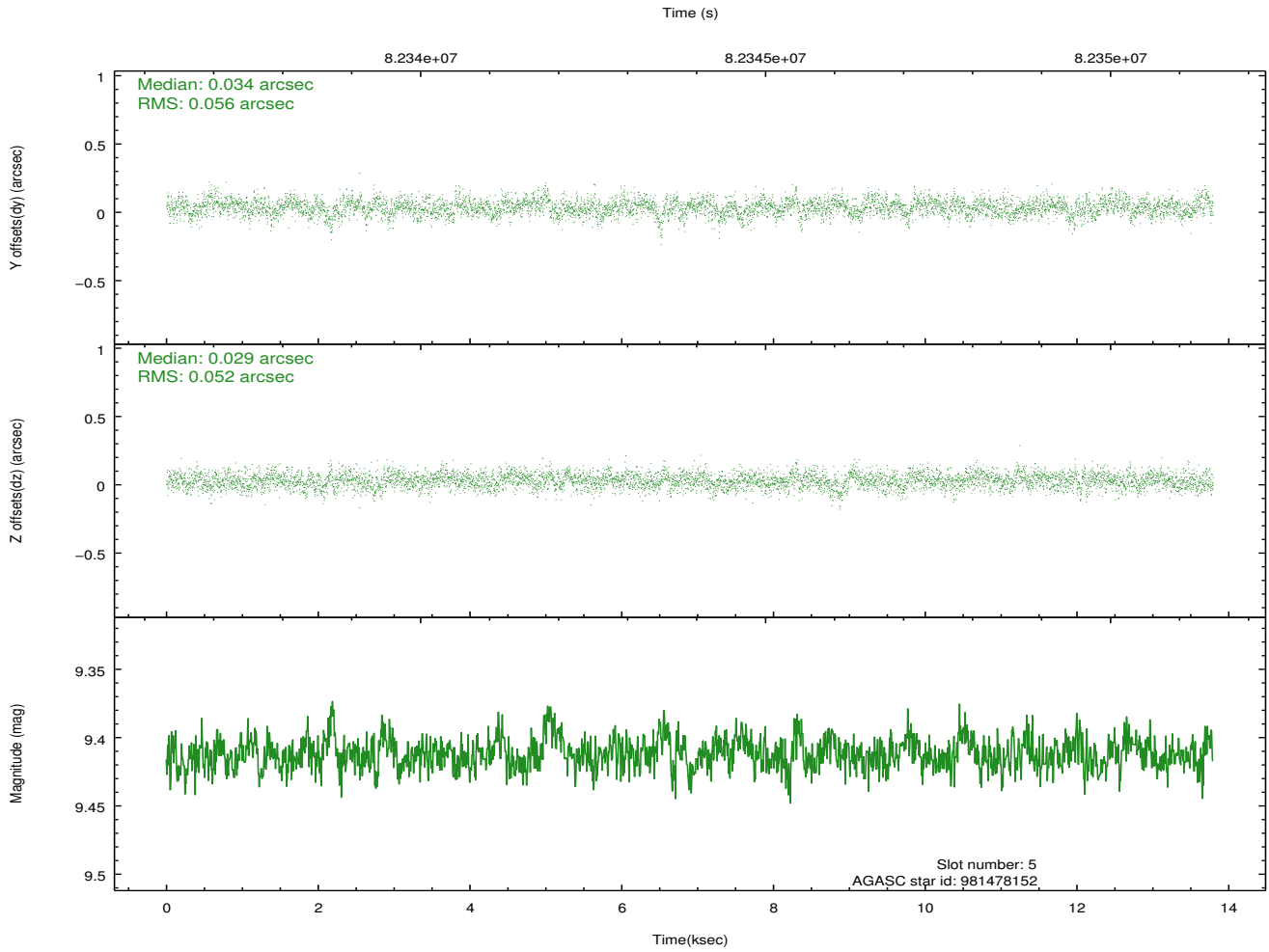
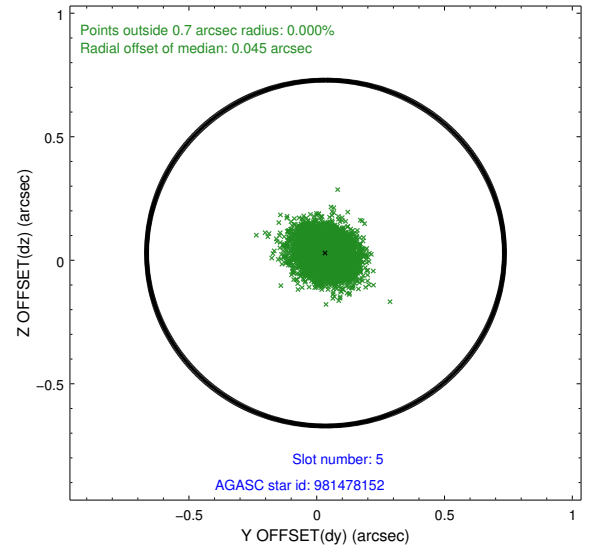
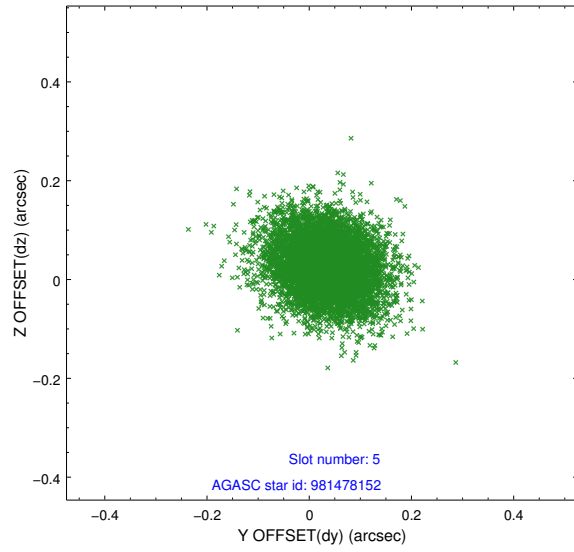
### 2.4.1 Slot 3



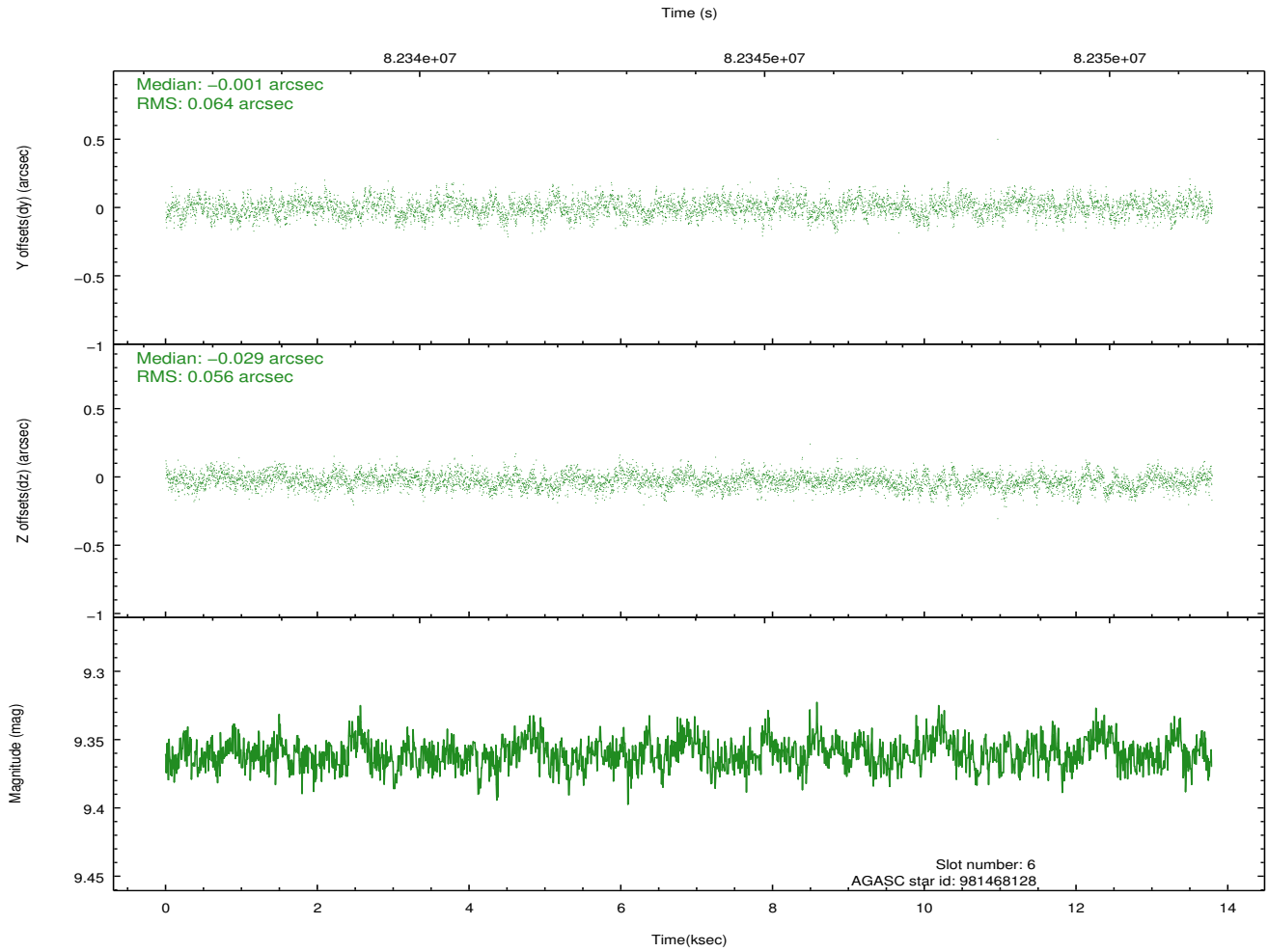
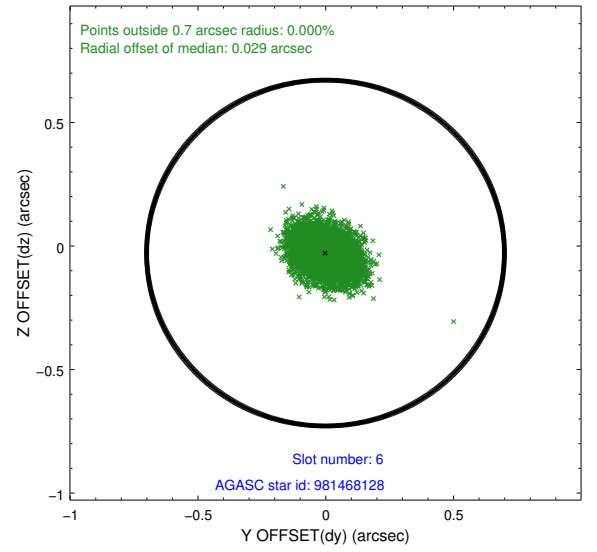
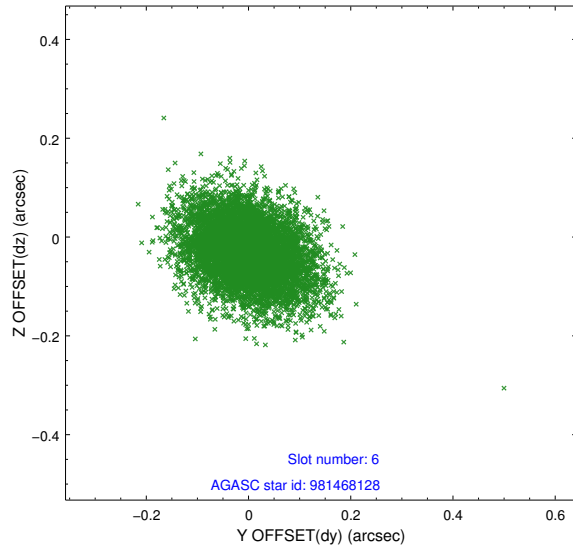
## 2.4.2 Slot 4



### 2.4.3 Slot 5

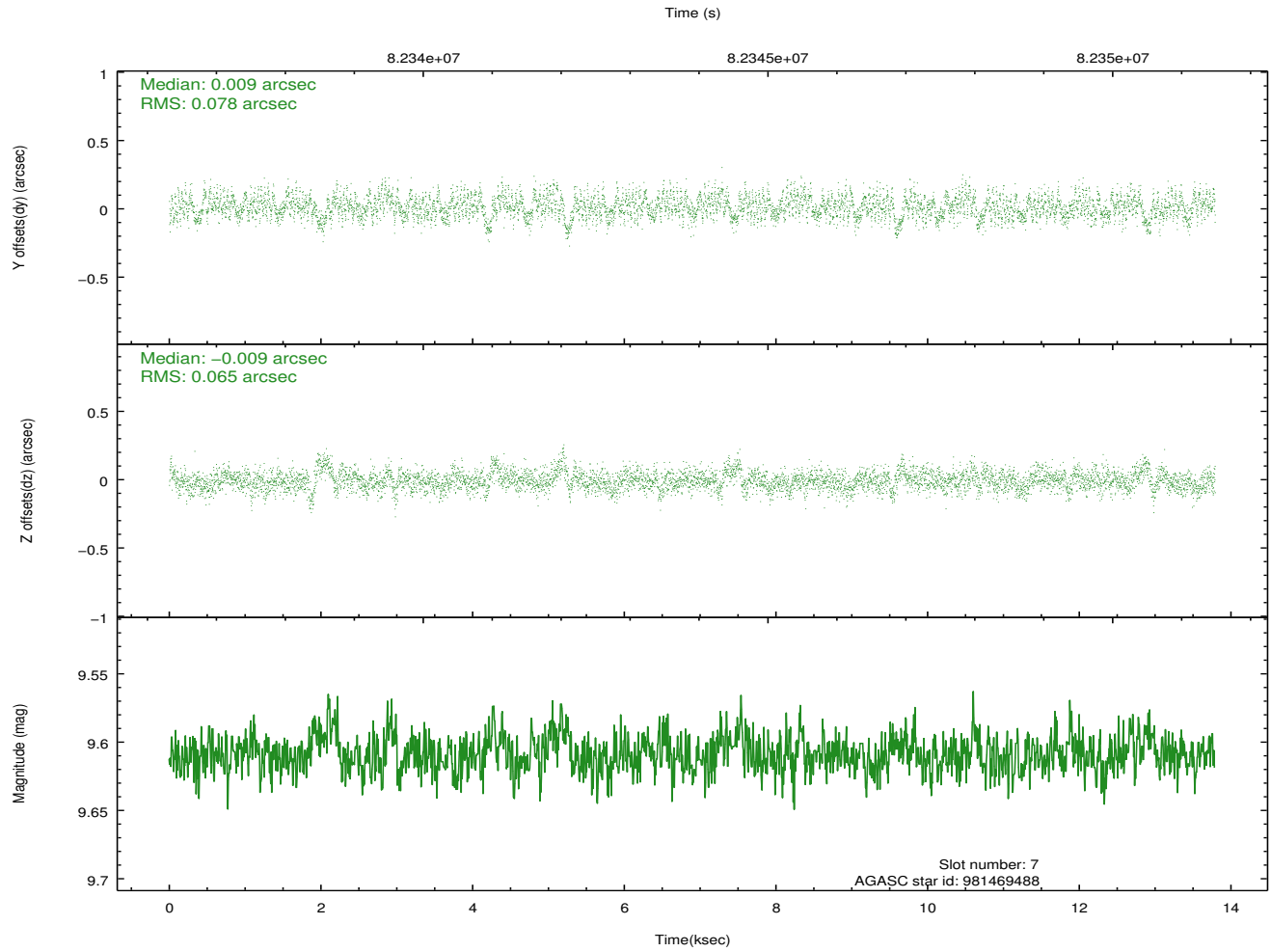
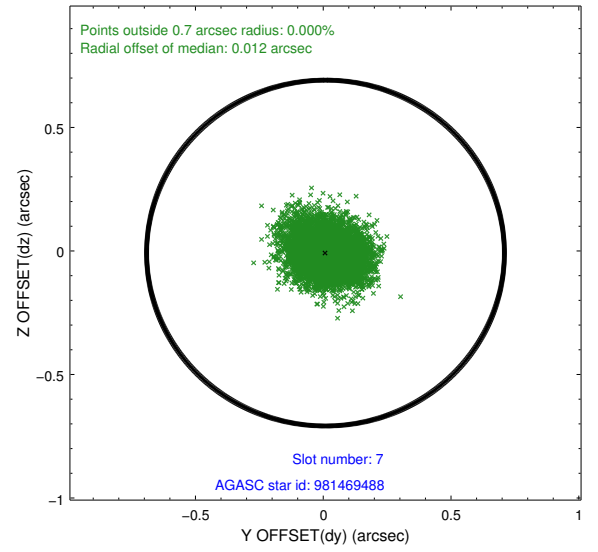
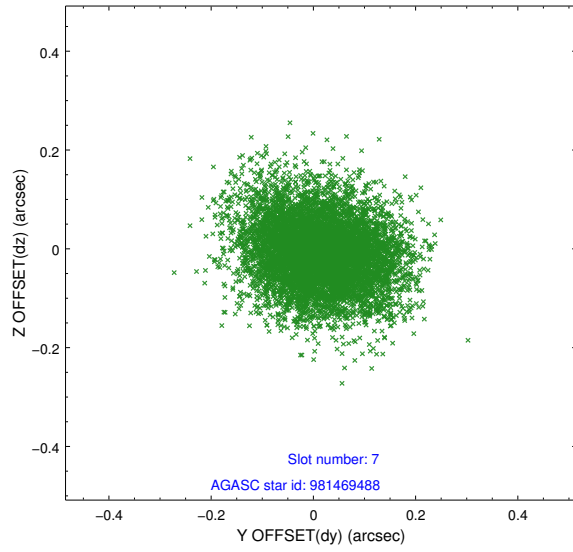


## 2.4.4 Slot 6



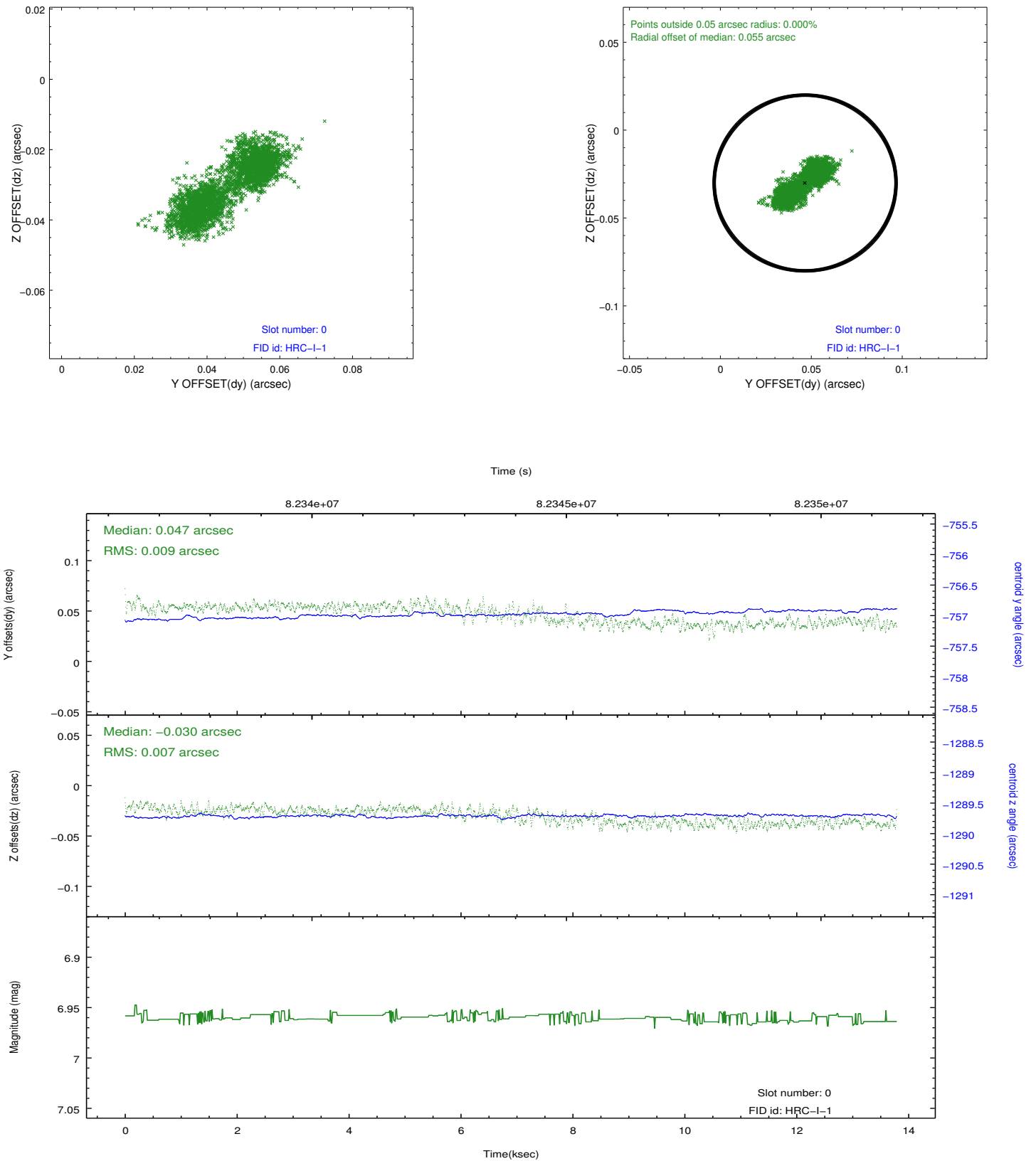


## 2.4.5 Slot 7

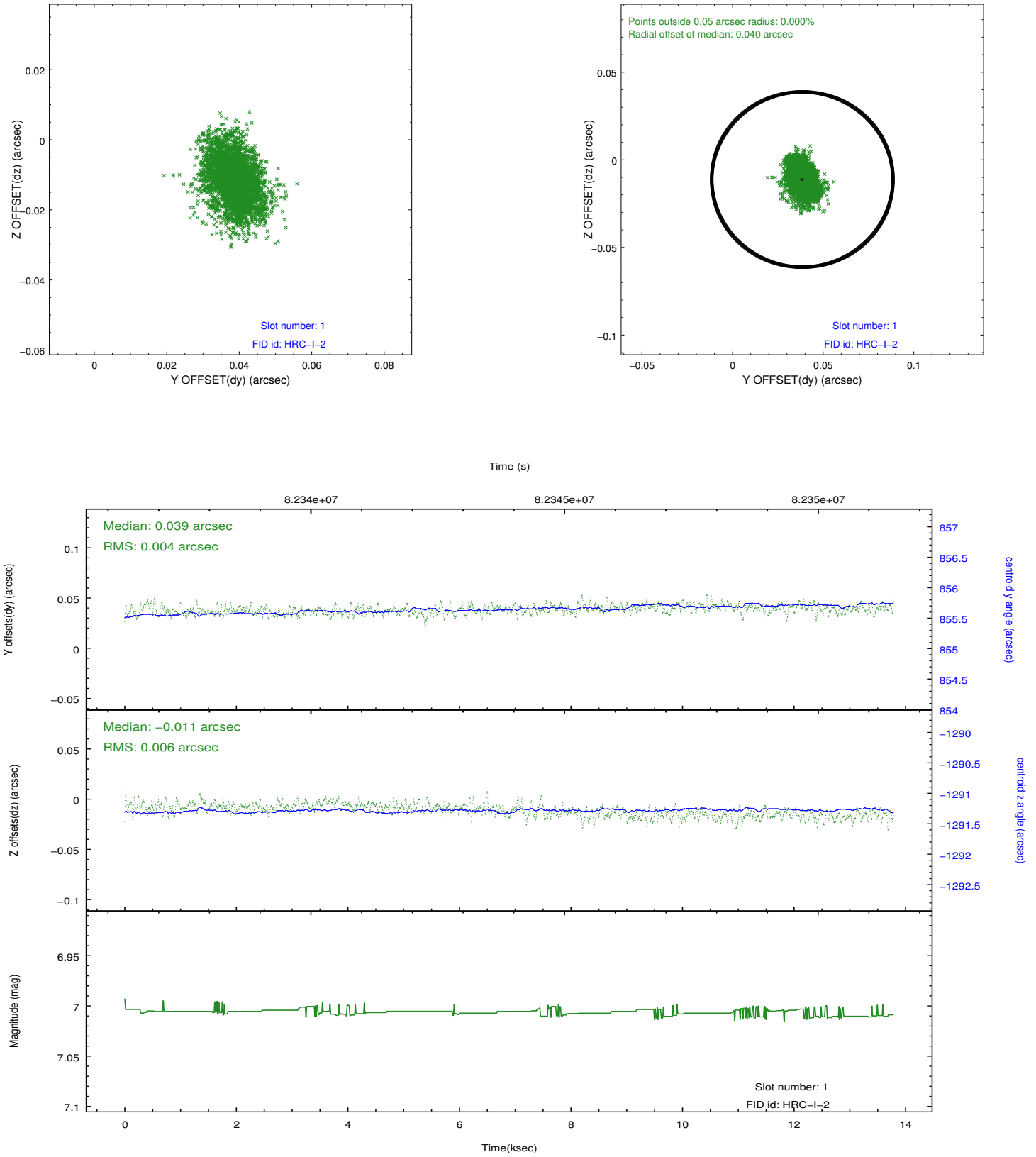


## 2.5 FID Slots

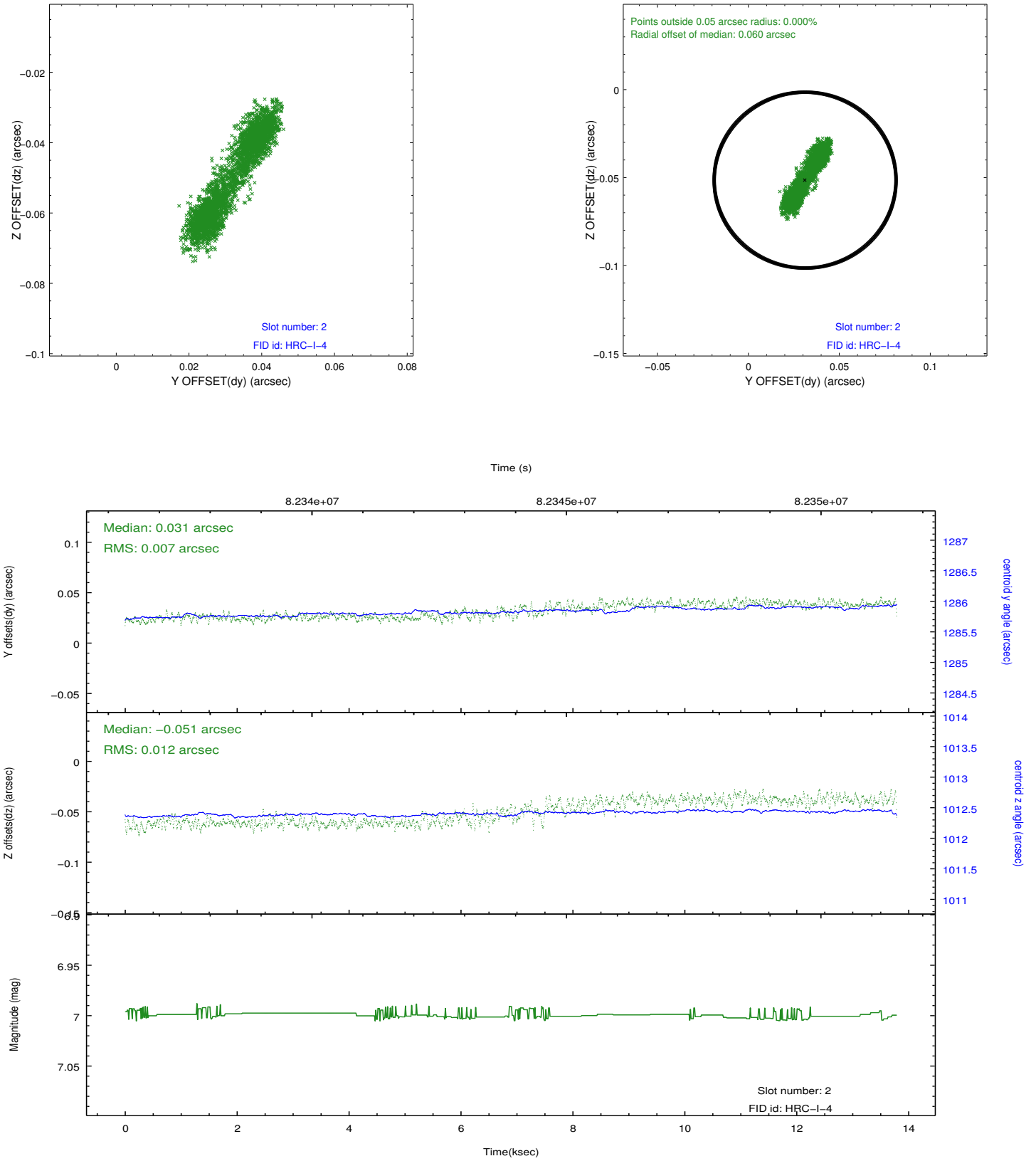
### 2.5.1 Slot 0



## 2.5.2 Slot 1

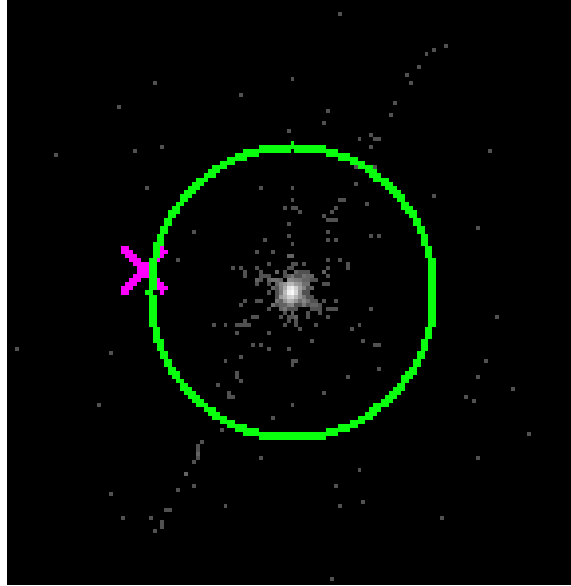


### 2.5.3 Slot 2

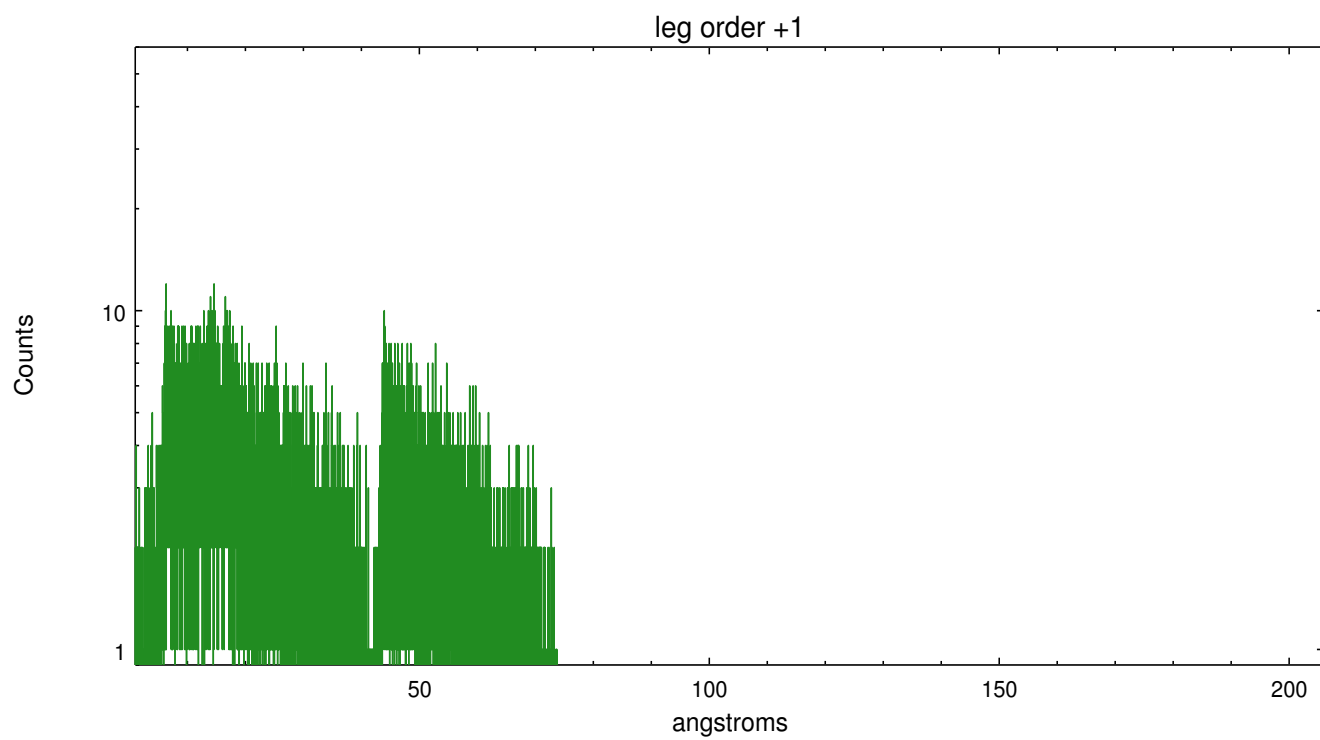
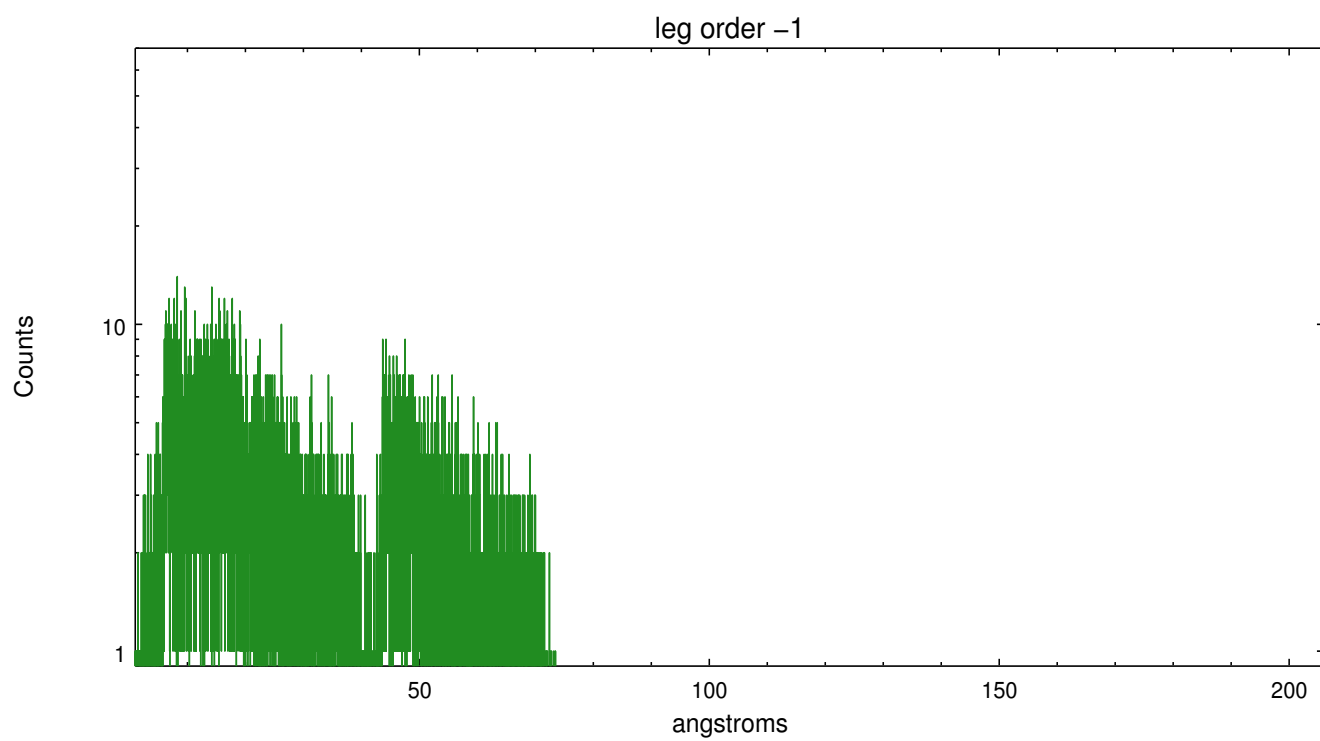


## 3 Gratings

### 3.1 LETG Arm



LETG Zero Order



## A Summary

### A.1 Status

V&V Scientist	Joy Nichols
V&V Date (YYYY-MM-DD)	2012.09.12
V&V Edition	1
V&V Disposition and Status	OK
V&V Charge Time	13.787

### A.2 Comments