

V&V Reference Report

L2 ASCDS Version : 8.4.5

Observation 3370 - L2 Version 4
Chandra X-Ray Center

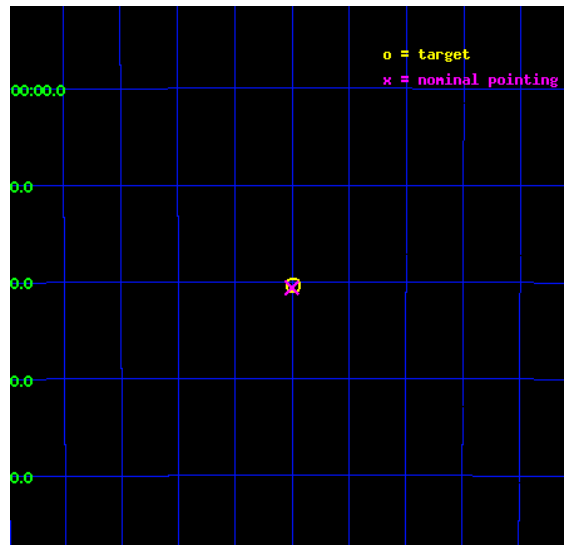
L2 Processing Date : Sep 24 2012

Contents

1	Front	2
2	OBI	3
2.1	OBI	3
2.1.1	Images	3
2.1.2	Bias	3
2.1.3	Parameters	4
2.1.4	Events	4
2.2	Compared Parameters	5
2.3	Star Slots	6
2.4	FID Slots	6
A	Summary	7
A.1	Status	7
A.2	Comments	7

1 Front

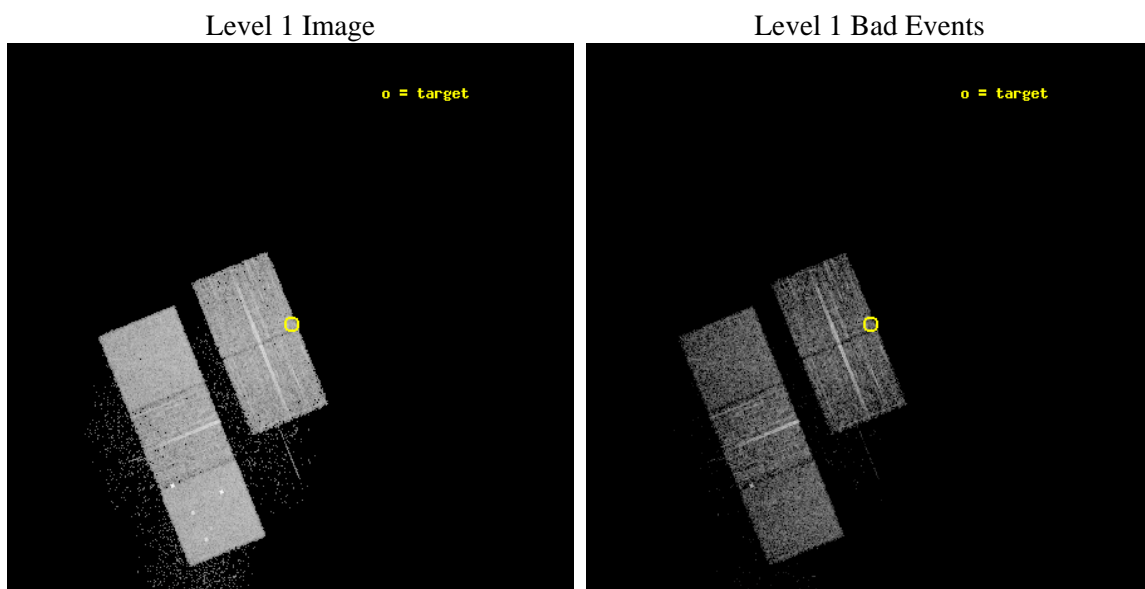
seq_num	190007	Sequence number
obs_id	3370	Observation id
title	ACIS DARK CURRENT CALIBARTION ON DARK MOON	Proposal title
observer	DR. SCOTT WOLK	Principal investigator
object	DARK MOON	Source name
dtcycle	0	
cycle	P	events from which exps? Prim/Second/Both
ra_targ	235.74868	Observer's specified target RA [deg]
dec_targ	-37.34	Observer's specified target Dec [deg]
ra_nom	235.75037266755	Nominal RA [deg]
dec_nom	-37.343592108508	Nominal Dec [deg]
roll_nom	248.04857545639	Nominal Roll [deg]
revision	4	Processing version of data
ontime	0.0	Sum of GTIs [s]
livetime	0.0	Livetime [s]
ontime2	0.0	Sum of GTIs [s]
ontime3	0.0	Sum of GTIs [s]
ontime5	0.0	Sum of GTIs [s]
ontime6	0.0	Sum of GTIs [s]
ontime7	0.0	Sum of GTIs [s]
l2events	0	Number of level 2 events



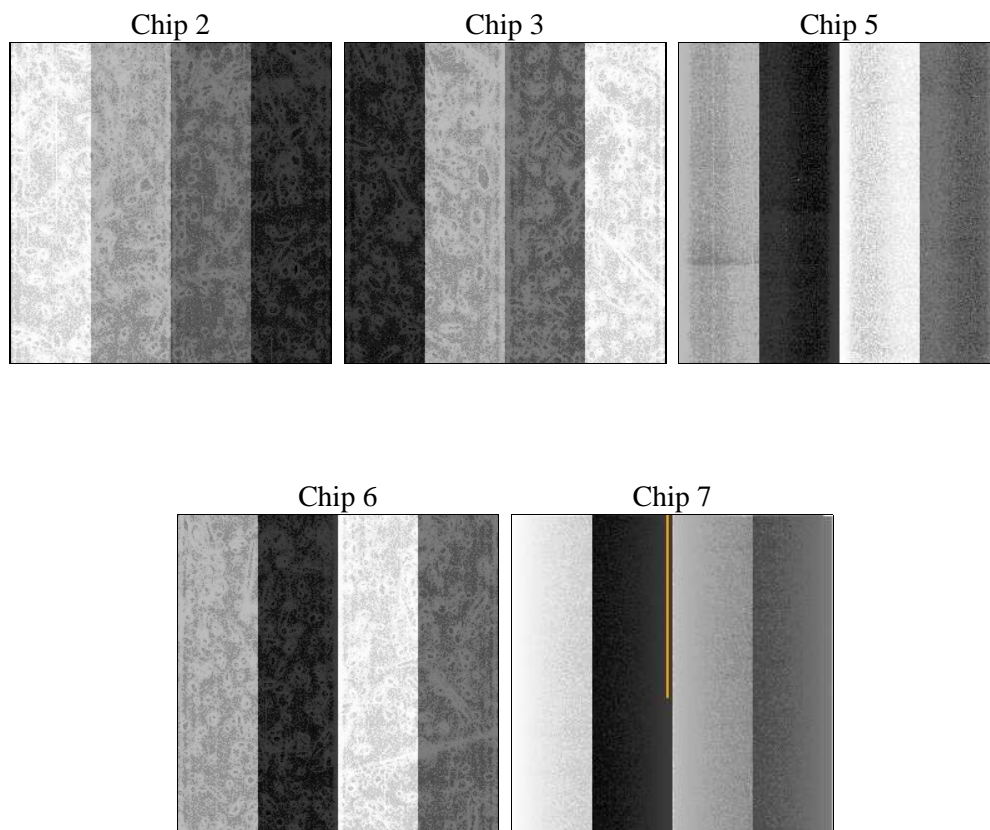
2 OBI

2.1 OBI

2.1.1 Images



2.1.2 Bias



2.1.3 Parameters

obi_num	0	Obi number	sched_exp_time	5160.000000	[s] Scheduled observation exposure time
ascdsver	8.4.5	Processing system revision	ontime	0.0	Sum of GTIs [s]
caldsver	4.5.1.1	 	ontime2	5122.158122614	Sum of GTIs [s]
date	2012-09-24T12:03:34	Date and time of file creation	ontime3	5122.1991626024	Sum of GTIs [s]
revision	4	Processing version of data	ontime5	5122.2401726842	Sum of GTIs [s]
			ontime6	5122.1170826107	Sum of GTIs [s]
			ontime7	5122.2812126875	Sum of GTIs [s]
			l1events	194741	Number of level 1 events

2.1.4 Events

	ccd 2	ccd 3	ccd 5	ccd 6	ccd 7
level 1 events	33737	33234	50227	34832	42711
rejected events	30215	29709	26508	31169	25095
rejected %	89%	89%	52%	89%	58%

	ccd 2	ccd 3	ccd 5	ccd 6	ccd 7
grade 0 events	1437	1453	3586	1350	1527
	4%	4%	7%	3%	3%
grade 1 events	16	20	136	19	43
	0%	0%	0%	0%	0%
grade 2 events	760	712	6274	792	3531
	2%	2%	12%	2%	8%
grade 3 events	355	379	1051	381	1532
	1%	1%	2%	1%	3%
grade 4 events	328	330	1104	352	1635
	0%	0%	2%	1%	3%
grade 5 events	1116	1294	3703	1396	4212
	3%	3%	7%	4%	9%
grade 6 events	642	651	11704	788	9391
	1%	1%	23%	2%	21%
grade 7 events	29083	28395	22669	29754	20840
	86%	85%	45%	85%	48%

2.2 Compared Parameters

Parameter	Planned	Actual	Parameter	Planned	Actual
Instrument	ACIS	ACIS	Obspar format version number	7	7
Detector	ACIS-23567	ACIS-23567	Obspar file type	PREDICTED	ACTUAL
Grating	NONE	NONE	Obspar update status	OVERRIDE	OVERRIDE
Data mode	VFAINT	VFAINT	Number of optional ACIS chips dropped	0	0
Observation mode	POINTING	POINTING	On-chip summing requested	N	N
[deg] Pointing RA	235.7503718744411	235.7503726675508	Subarray requested	NONE	NONE
[deg] Pointing Dec	-37.34359179117558	-37.34359210850754	Alternating exposures requested	N	N
[deg] Pointing Roll	248.0485749680326	248.0485754563884	[s] Primary exposure time	3.1	3.1
[s] Window start time (MET)	117525664.184000	117525664.184000			
[s] Window stop time (MET)	117568864.184000	117568864.184000			
[mm] SIM focus pos	-0.78090834371673	-0.78090834371673			
[mm] SIM defocus	0.001439854621703041	0.001439854621703041			
[mm] SIM translation stage pos	-233.5874344608	-233.5874344608			
[mm] SIM translation stage offset	-0.005028630631784381	-0.005028630631784381			
[s] Observation start time (MET)	117536422.5773628	117536422.5773628			
Observation start date	2001-09-22T09:00:00	2001-09-22T09:00:22			
[s] Observation end time (MET)	117541803.8275756	117541803.8275756			
Observation end date	2001-09-22T10:26:00	2001-09-22T10:30:03			
Read mode	TIMED	TIMED			

2.3 Star Slots

2.4 FID Slots

A Summary

A.1 Status

V&V Scientist	Beth Sundheim
V&V Date (YYYY-MM-DD)	2012.09.27
V&V Edition	1
V&V Disposition and Status	OK
V&V Charge Time	5.12

A.2 Comments

Charge time remains at previous value of 5.12 ksec. Charge time is based on Level 1 events because the OBC aspect solution was used (violation of earth angle constraint.) Consequently, there are no Level 2 events and no GTI.

Window preference met.