

# V&V Reference Report

## L2 ASCDS Version : 8.1.1

Observation 1412 - L2 Version 5

Chandra X-Ray Center

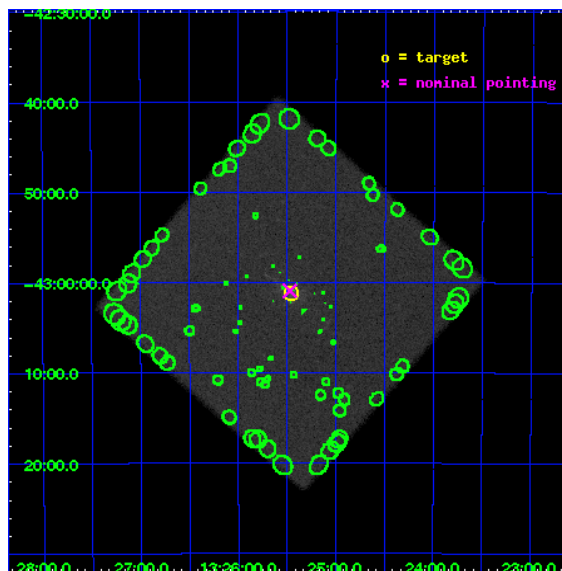
L2 Processing Date : Nov 26 2009

## Contents

<b>1</b>	<b>Front</b>	<b>2</b>
<b>2</b>	<b>OBI</b>	<b>3</b>
2.1	OBI . . . . .	3
2.1.1	Images . . . . .	3
2.1.2	Parameters . . . . .	4
2.1.3	Events . . . . .	4
2.2	Compared Parameters . . . . .	5
2.3	Aspect . . . . .	6
2.4	Star Slots . . . . .	9
2.4.1	Slot 3 . . . . .	9
2.4.2	Slot 4 . . . . .	10
2.4.3	Slot 5 . . . . .	11
2.4.4	Slot 6 . . . . .	12
2.4.5	Slot 7 . . . . .	13
2.5	FID Slots . . . . .	14
2.5.1	Slot 0 . . . . .	14
2.5.2	Slot 1 . . . . .	15
2.5.3	Slot 2 . . . . .	16
<b>3</b>	<b>Point Sources</b>	<b>17</b>
<b>A</b>	<b>Summary</b>	<b>18</b>
A.1	Status . . . . .	18
A.2	Comments . . . . .	18

# 1 Front

seq_num	780362	Sequence number
obs_id	1412	Observation id
title	DEMONSTRATION IMAGE OF CEN A	Proposal title
observer	Dr. CXC Calibration	Principal investigator
object	CEN A	Source name
ra_targ	201.365	Observer's specified target RA
dec_targ	-43.019722	Observer's specified target Dec
ra_nom	201.36790886648	Nominal RA
dec_nom	-43.015513453968	Nominal Dec
roll_nom	86.093128795895	Nominal Roll
revision	5	Processing version of data
ontime	15063.144295573	[s]
livetime	14971.364333105	Ontime multiplied by DTCOR
l2events	455888	Number of level 2 events

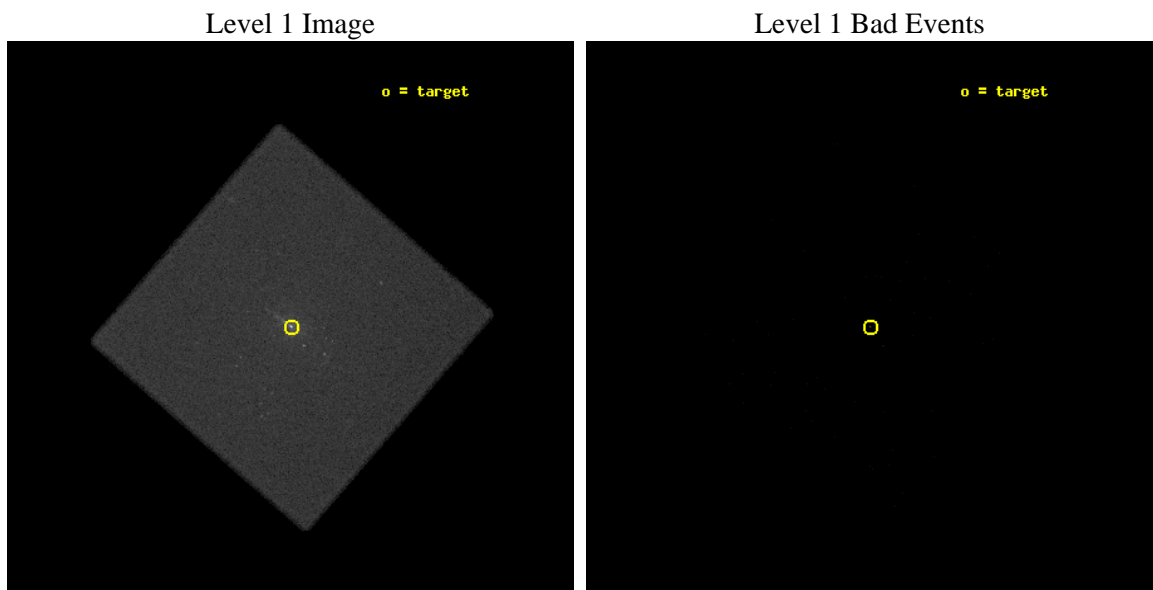




## 2 OBI

### 2.1 OBI

#### 2.1.1 Images



### 2.1.2 Parameters

obi_num	0	Obi number	sched_exp_time	14850.000000	Scheduled observation exposure time
ascdsver	8.1.1	Processing system revision	ontime	15063.144295573	[s]
caldbver	4.1.4	&#160	ll events	691365	Number of level 1 events
date	2009-11-26T08:02:54	Date and time of file creation			
revision	4	Processing version of data			

### 2.1.3 Events

#### Level 1 Events

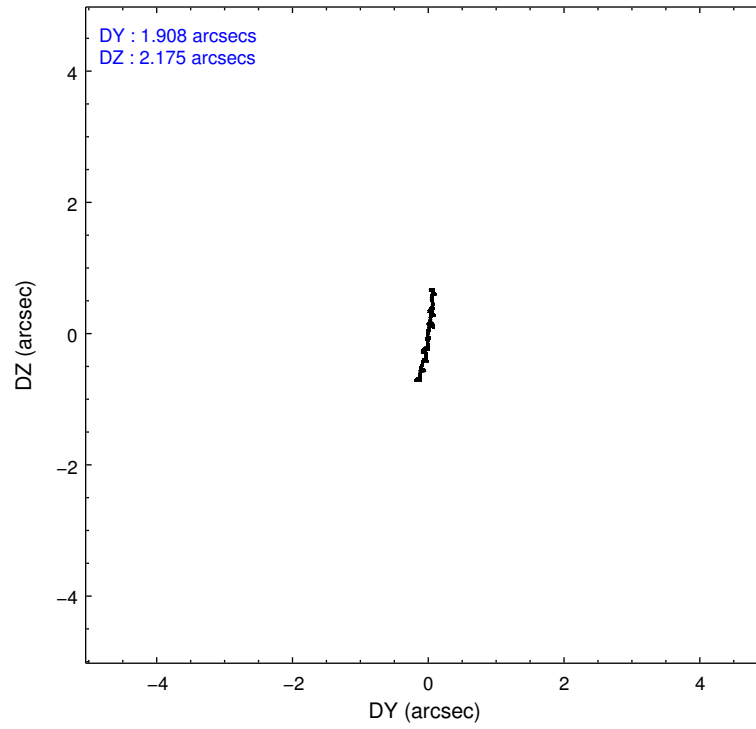
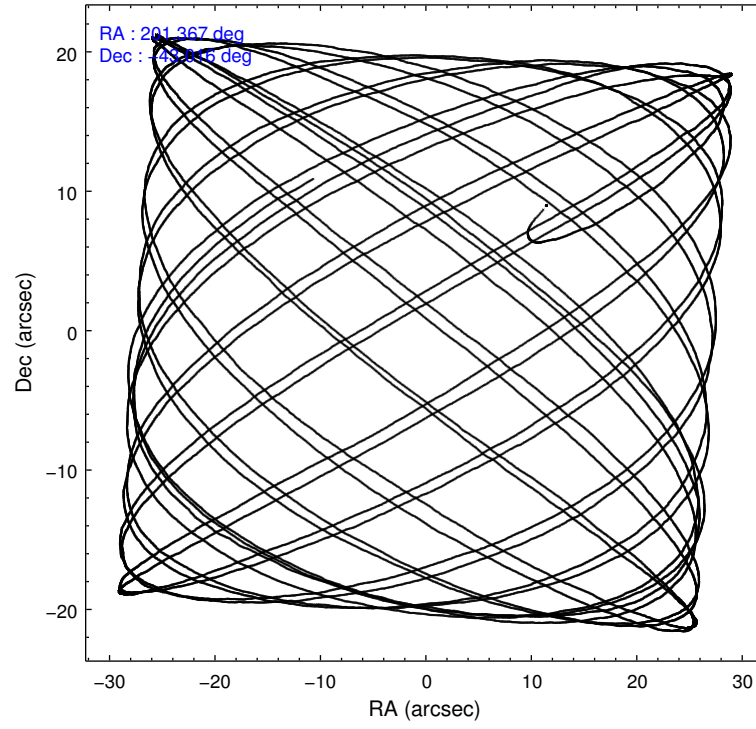
	<b>segment 0</b>
level 1 events	691365
rejected events	2232
rejected %	0%

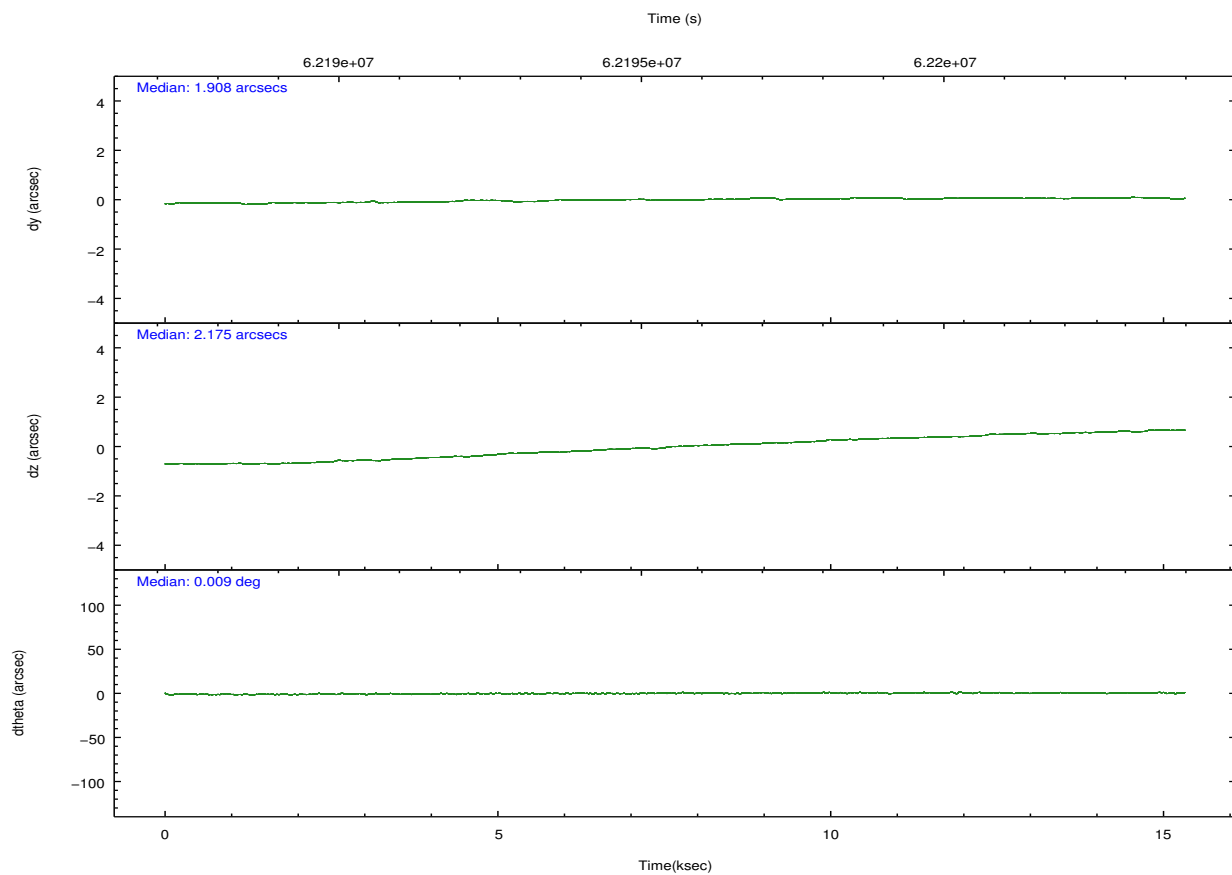
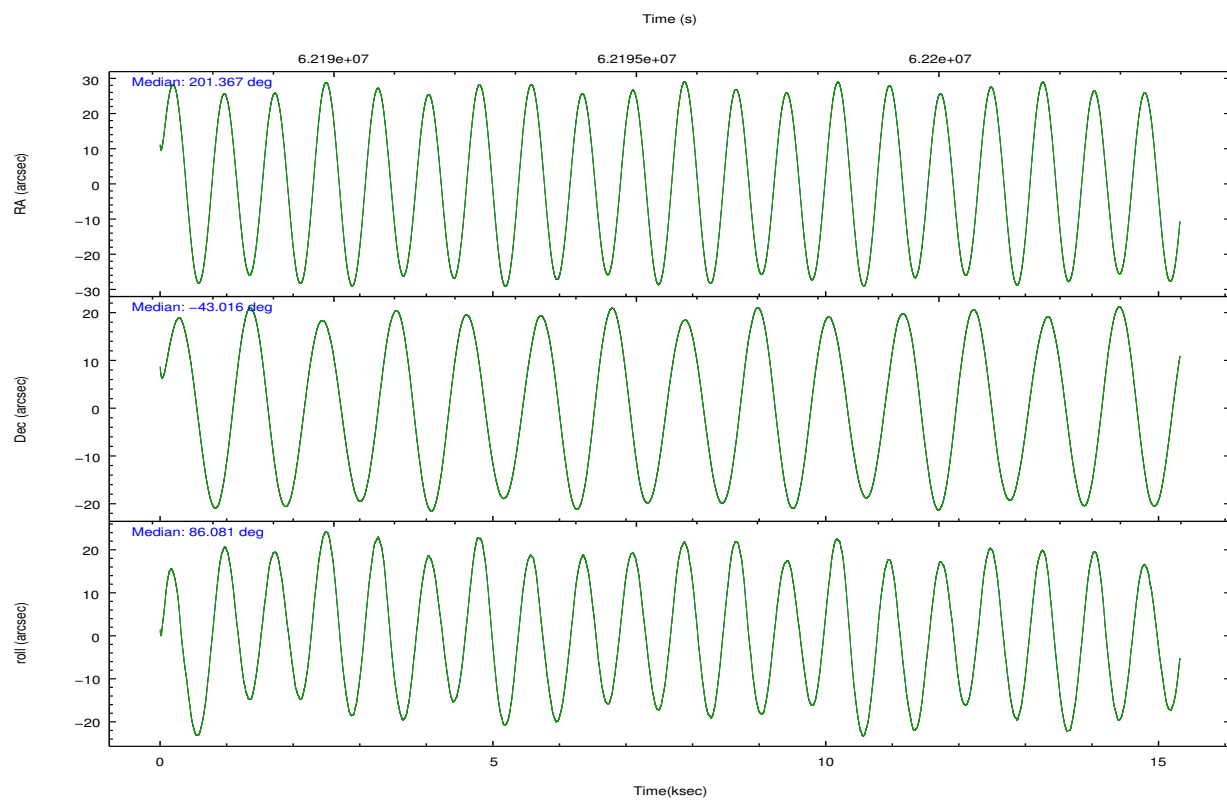
## 2.2 Compared Parameters

Parameter	Planned	Actual
Instrument	HRC	HRC
Detector	HRC-I	HRC-I
Grating	NONE	NONE
Data mode	OBSERVING	OBSERVING
Observation mode	POINTING	POINTING
Pointing RA	201.384625	201.367908866477
Pointing Dec	-43.040060	-43.01551345396776
Pointing Roll	86.200033	86.0931287958947
SIM focus pos (mm)	-1.040293	-1.038866356238299
SIM defocus (mm)	0	0.001426264420575141
SIM translation stage pos (mm)	126.985494	126.9854943052878
SIM translation stage offset (mm)	0	-5.413686238853188e-06
Observation start time	62188367.184000	62187126.140823
Observation start date	1999-12-21T18:31:43	1999-12-21T18:12:06
Observation end time	62203217.184000	62203918.203932
Observation end date	1999-12-21T22:39:13	1999-12-21T22:51:58

Parameter	Planned	Actual
Obspar format version number	6	6
Obspar file type	PREDICTED	ACTUAL
Obspar update status	NONE	UPDATED

## 2.3 Aspect



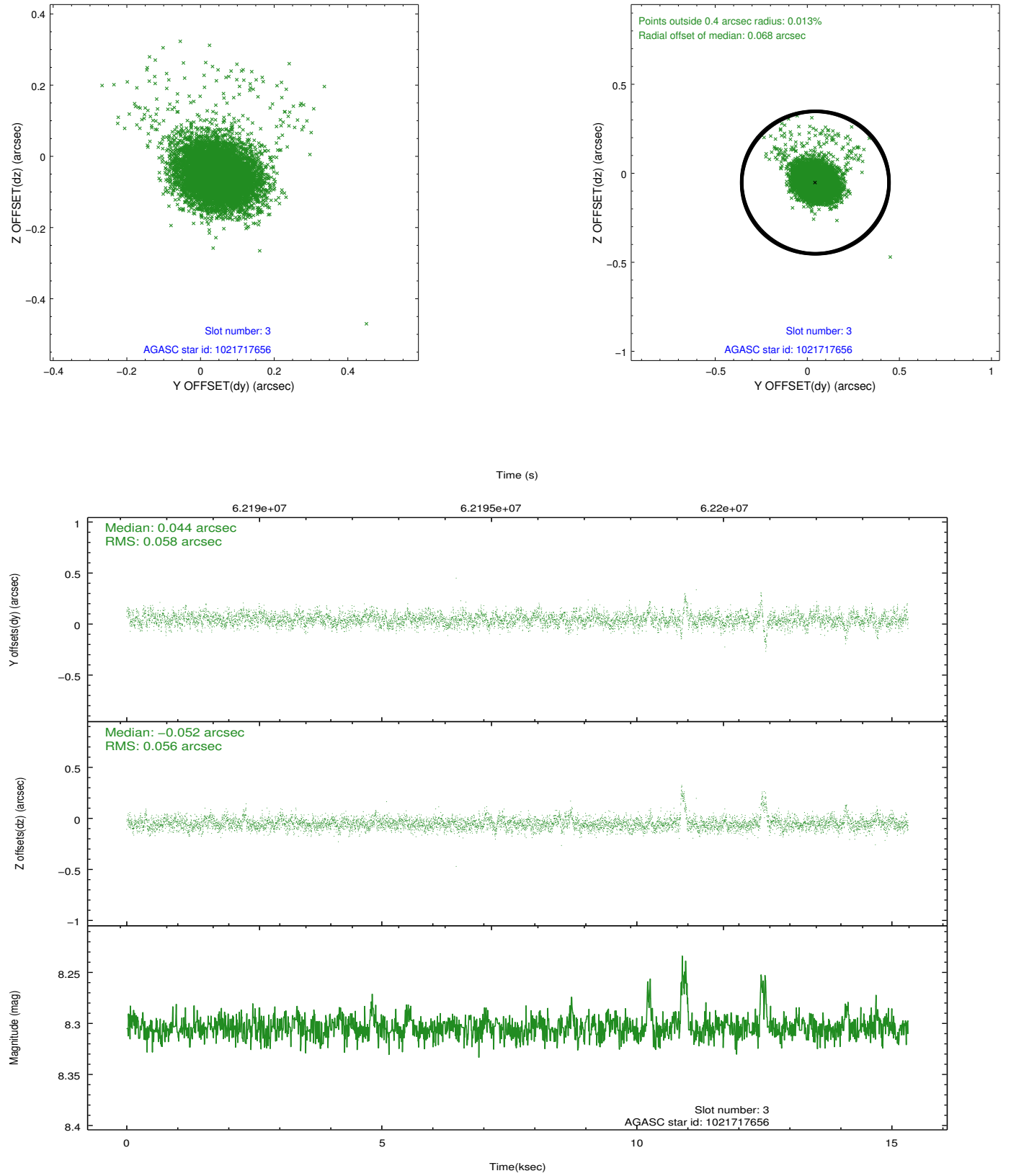


Slot Statistics

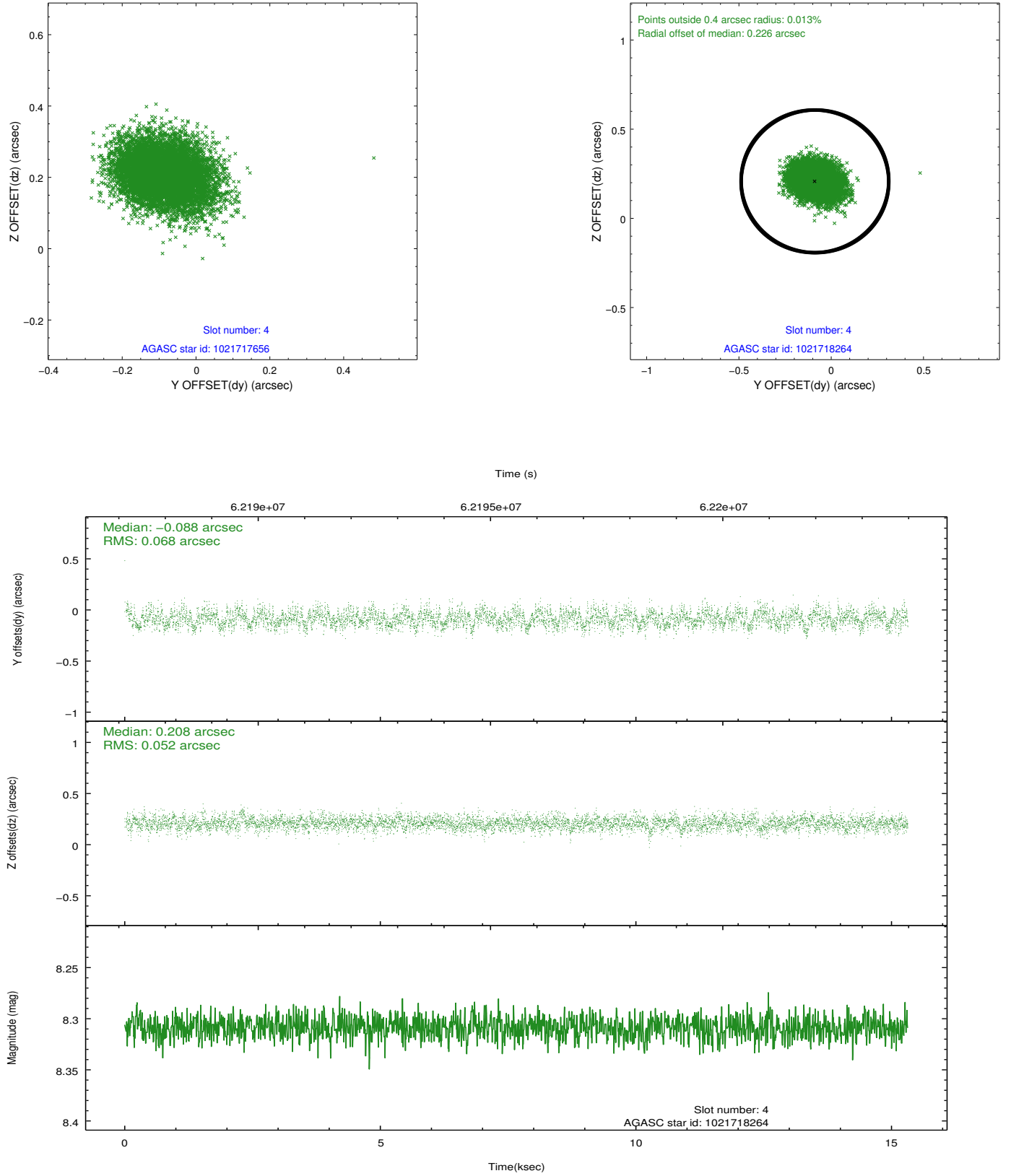
slot	status	id	mag	n_pts	med_dy	med_dz	dr1	dr2	ra	dec	mean_y	mean_z
0	FID	HRC-I-1	6.94	7474	0.043	-0.051	0.015	0.021	0.000000	0.000000	-757.30	-1289.94
1	FID	HRC-I-3	7.03	7473	0.044	-0.010	0.007	0.012	0.000000	0.000000	-1185.88	1014.49
2	FID	HRC-I-4	6.97	7473	0.028	-0.032	0.012	0.021	0.000000	0.000000	1285.33	1012.37
3	GUIDE	1021717656	8.30	7448	0.044	-0.052	0.079	0.136	201.139642	-43.082878	-196.75	631.19
4	GUIDE	1021718264	8.31	7461	-0.088	0.208	0.091	0.148	202.114846	-42.795539	998.88	-1867.57
5	GUIDE	1021720872	9.81	7460	0.000	-0.163	0.159	0.258	200.668338	-42.835886	600.56	1933.51
6	GUIDE	1021722032	10.18	7372	-0.030	-0.141	0.200	0.325	200.643231	-42.613906	1392.54	2060.09
7	GUIDE	1021716600	9.97	7404	0.073	0.144	0.171	0.279	201.501119	-42.681520	1309.26	-222.48

## 2.4 Star Slots

### 2.4.1 Slot 3

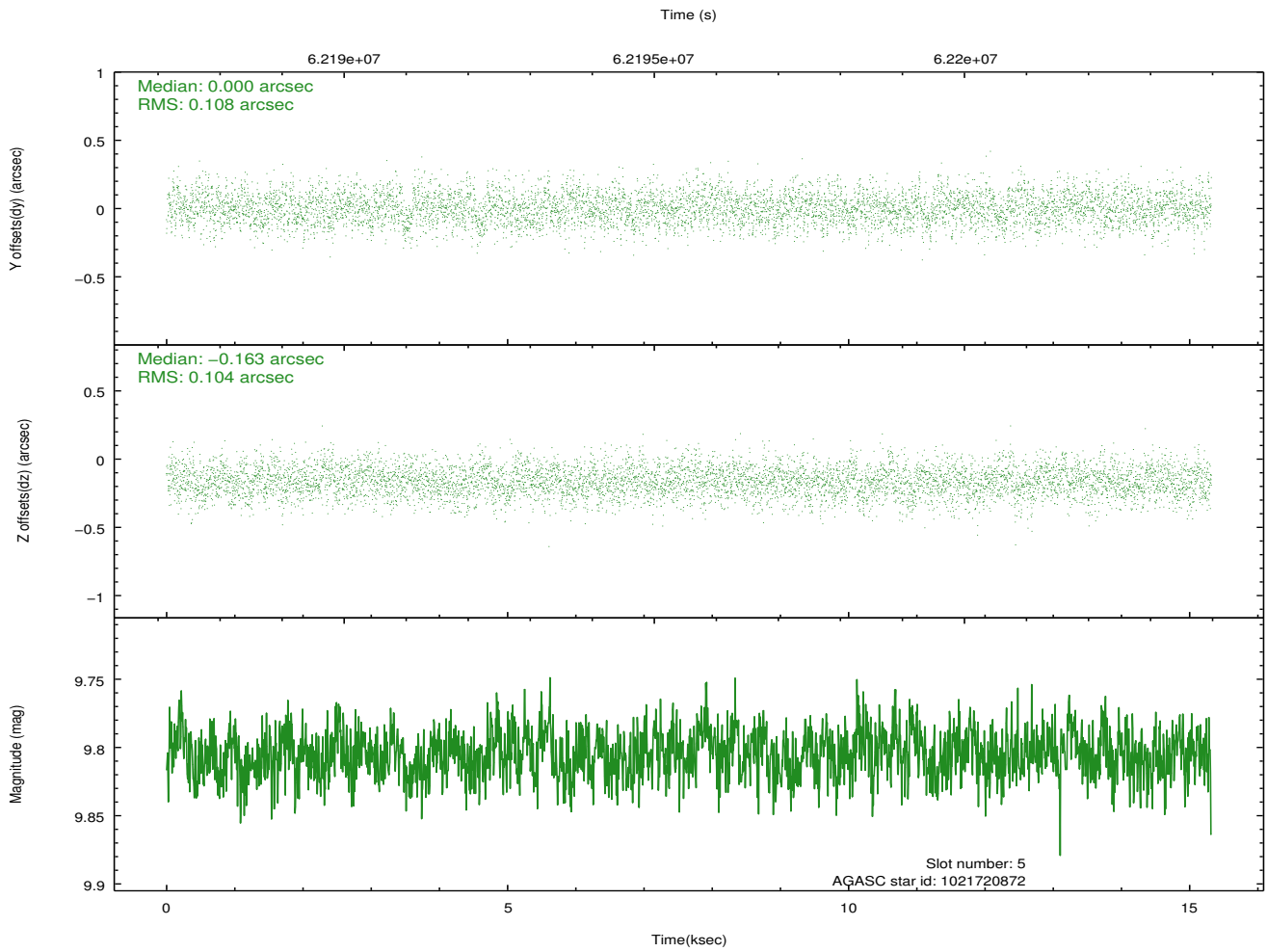
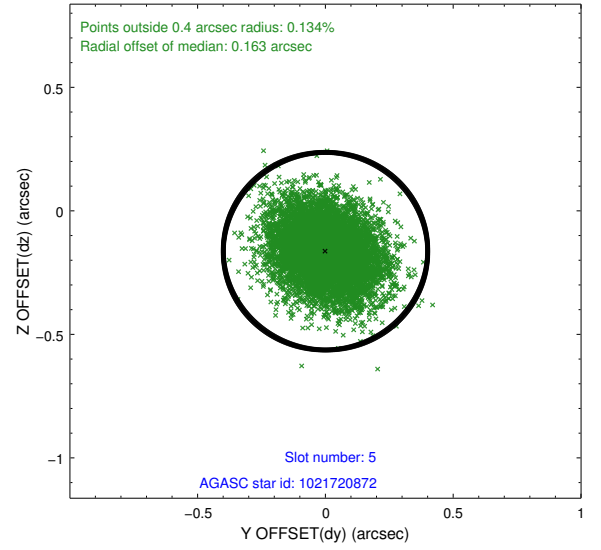
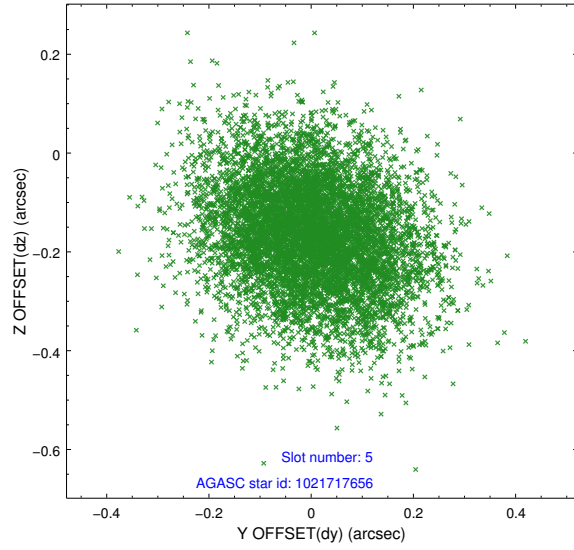


## 2.4.2 Slot 4

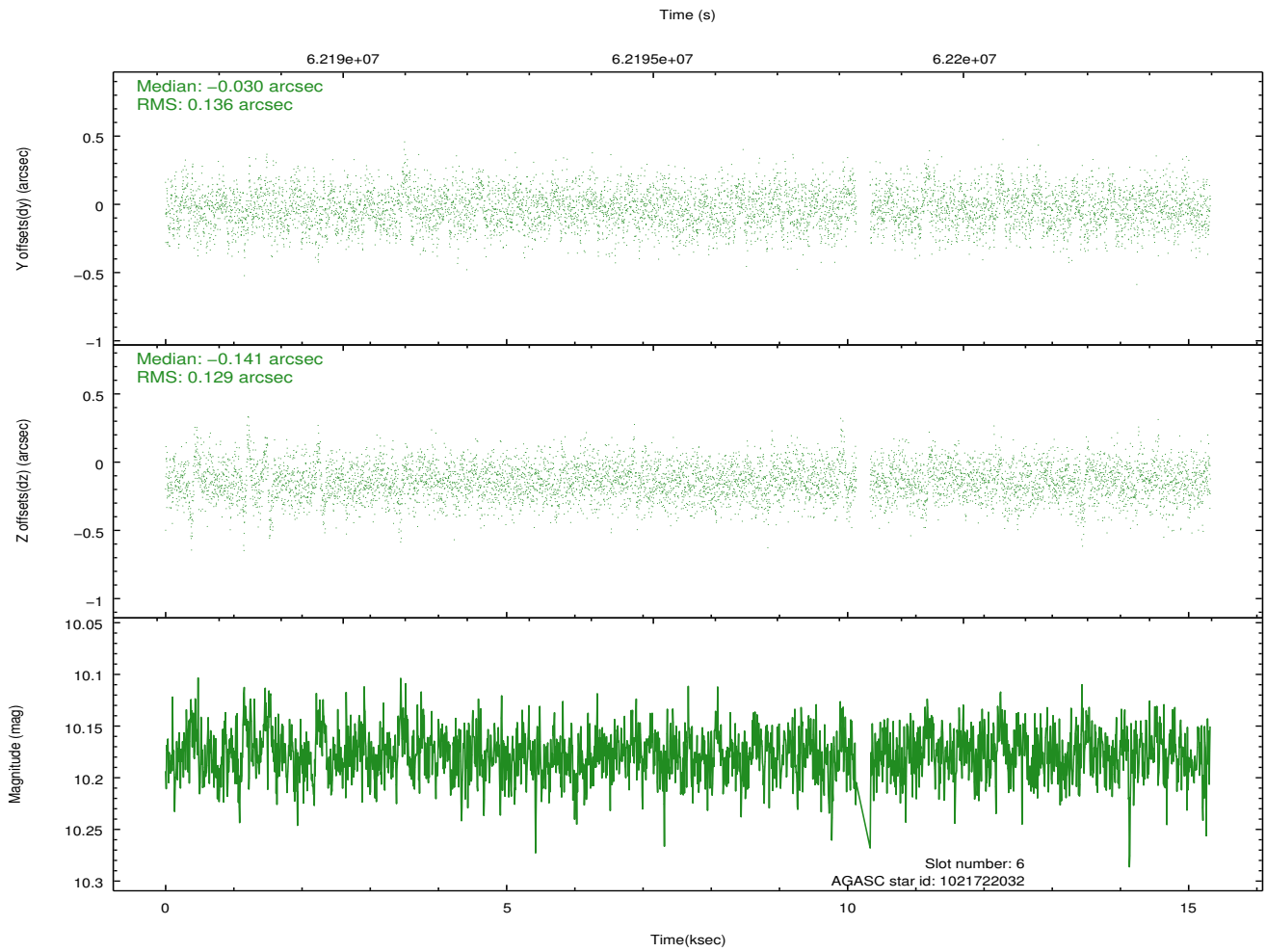
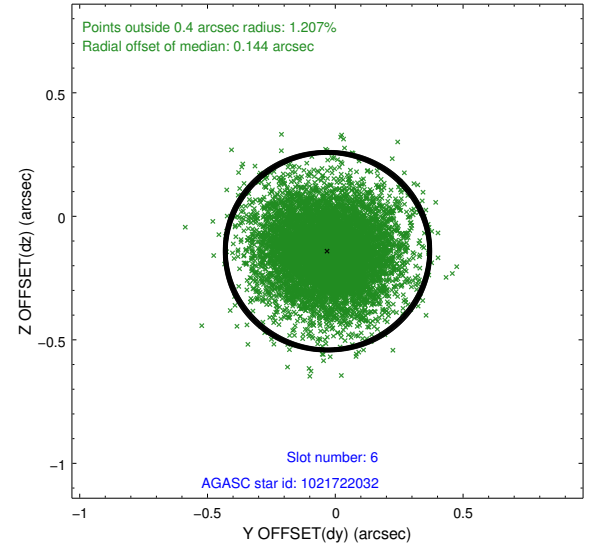
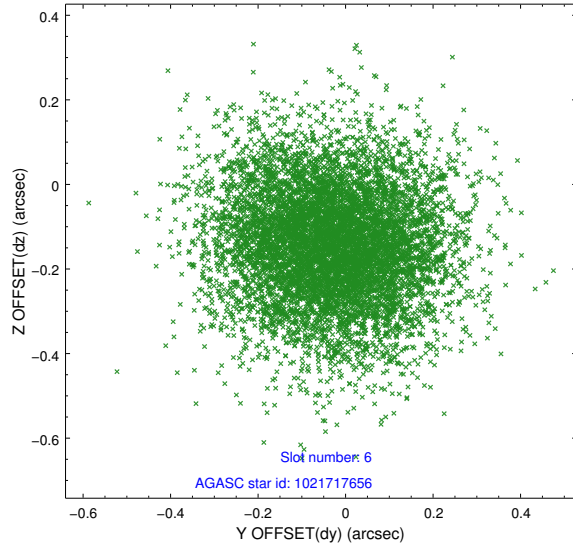




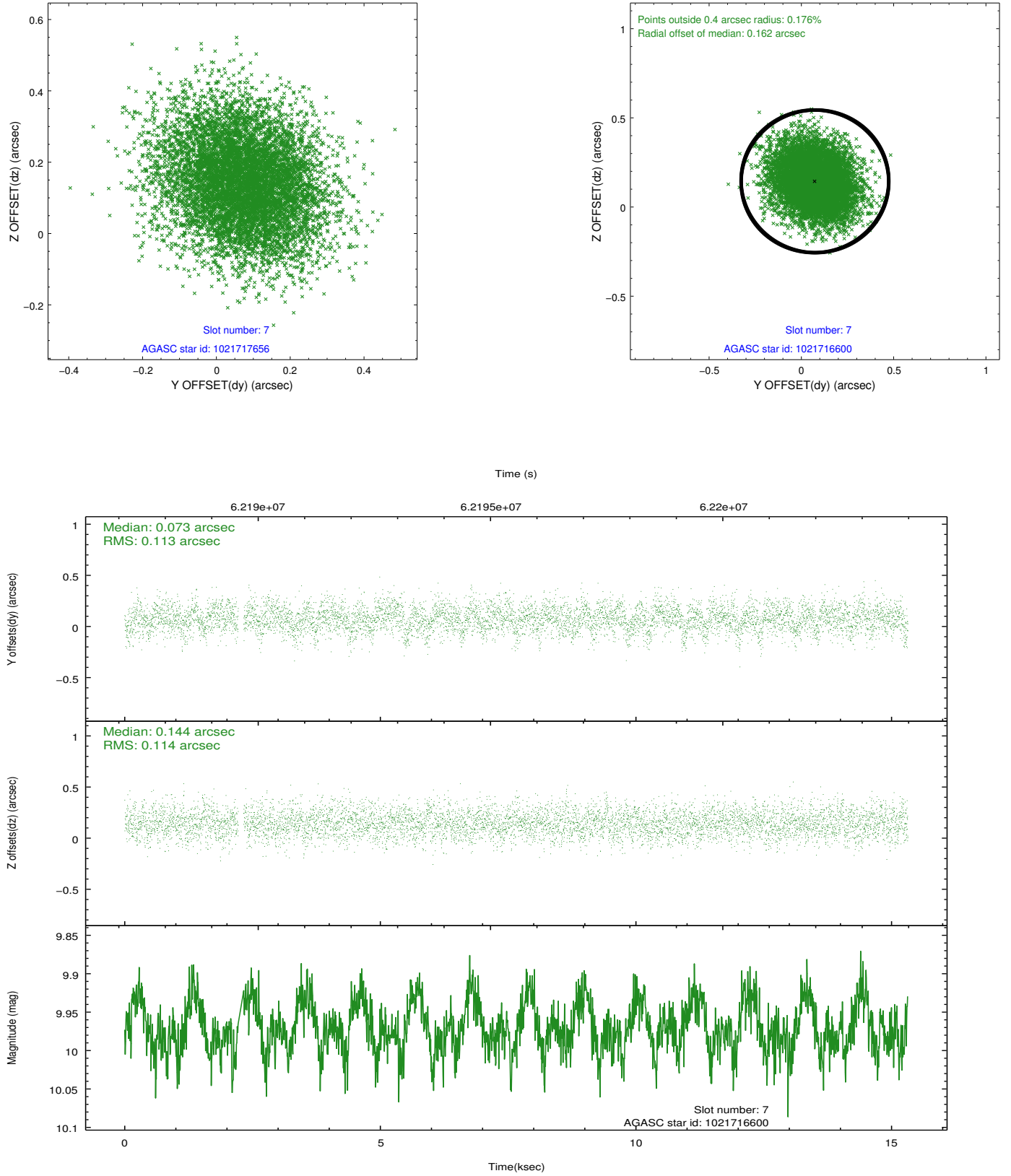
### 2.4.3 Slot 5



## 2.4.4 Slot 6

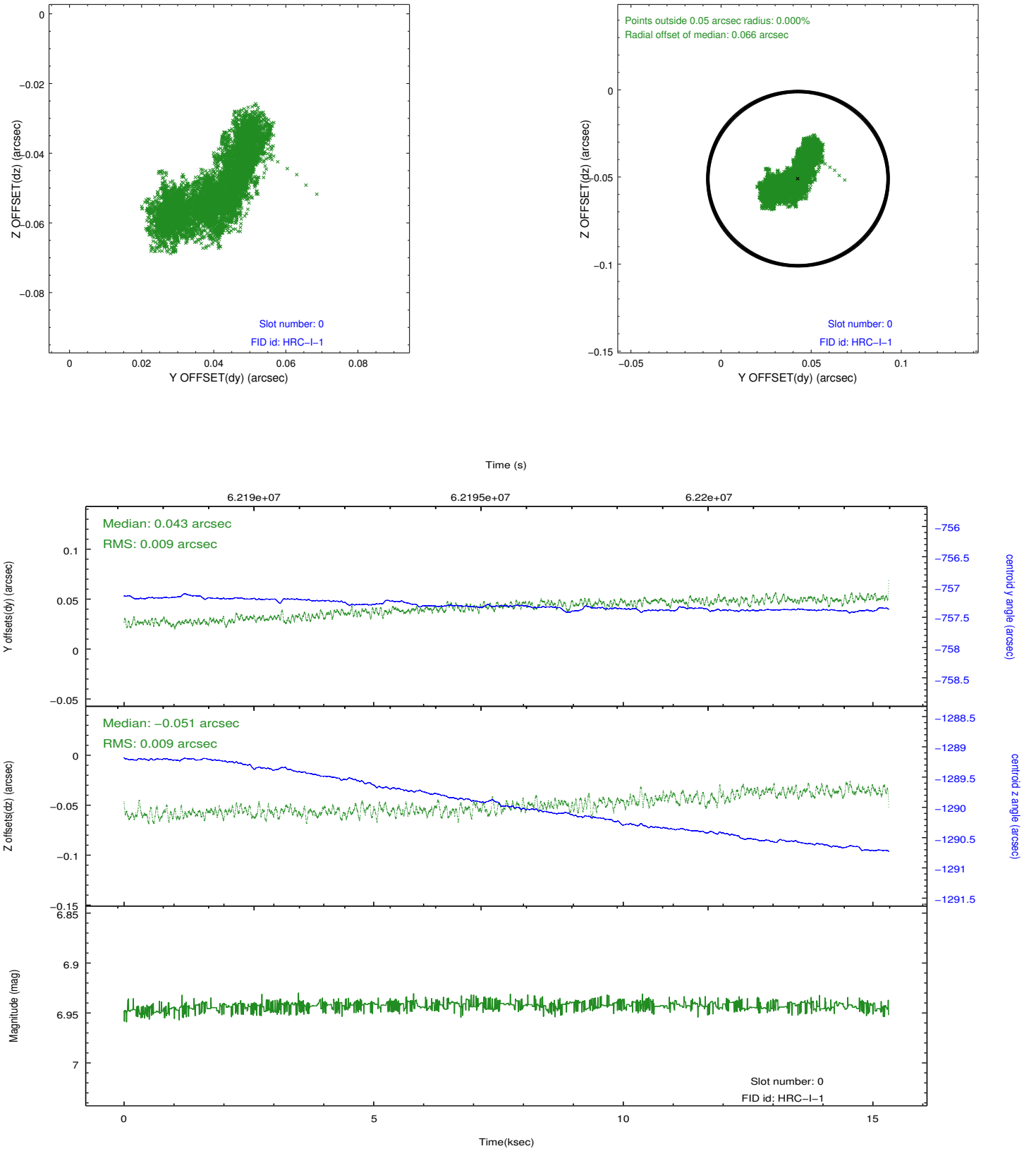


## 2.4.5 Slot 7

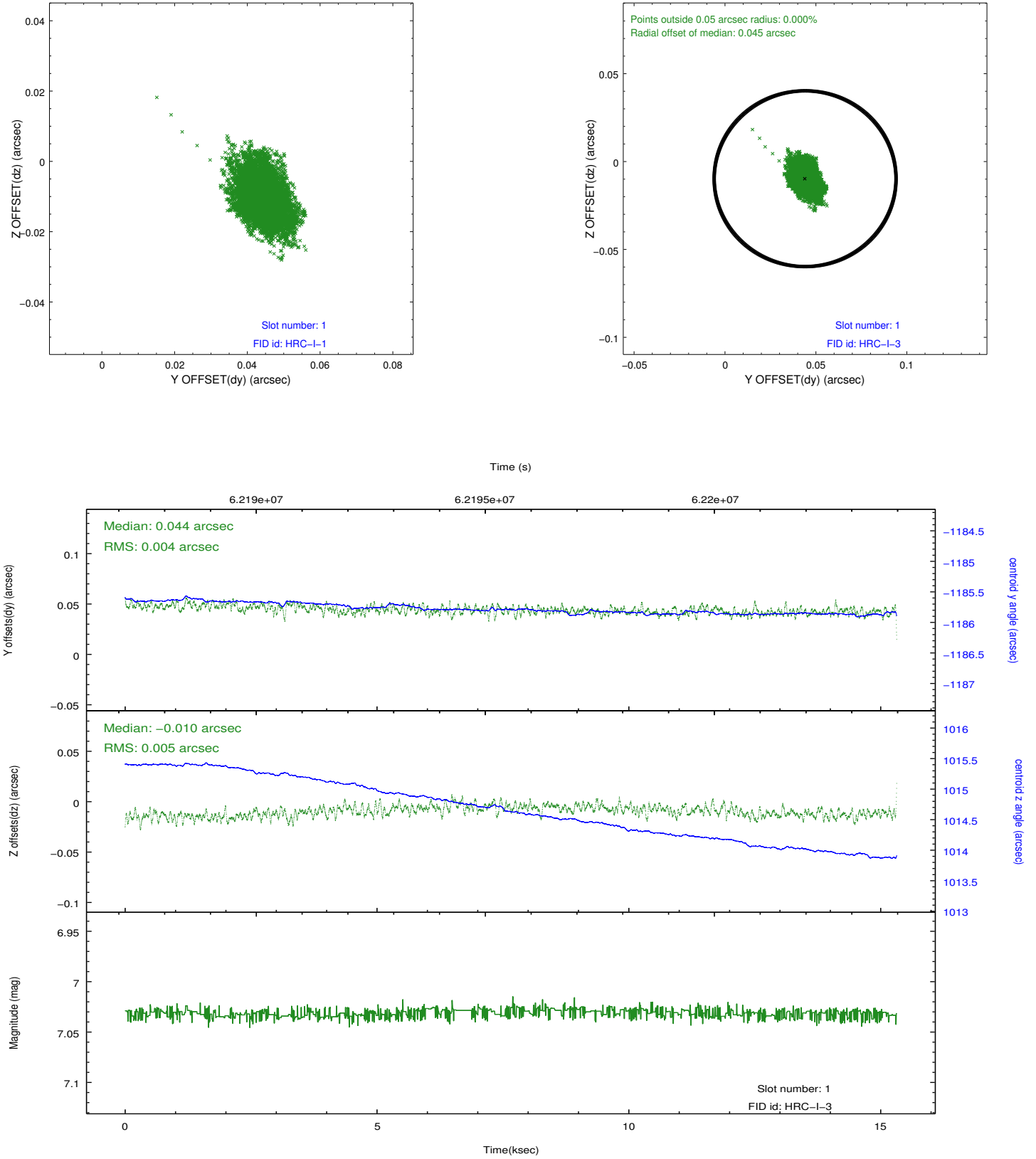


## 2.5 FID Slots

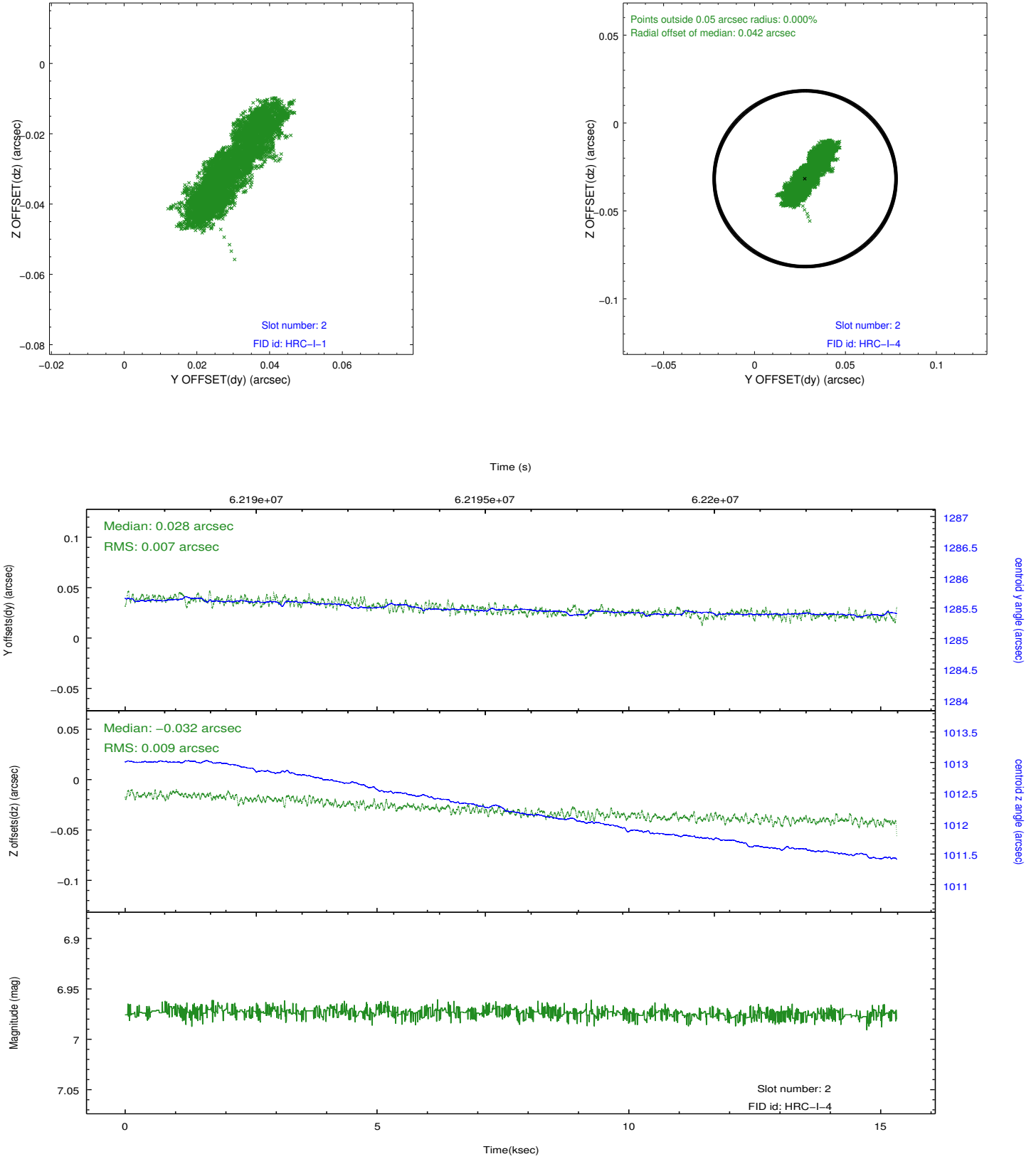
### 2.5.1 Slot 0



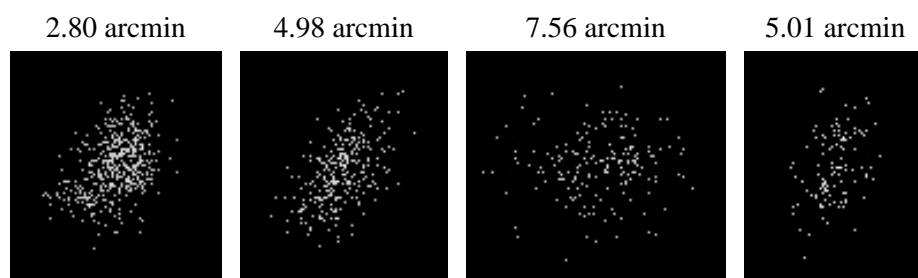
## 2.5.2 Slot 1



### 2.5.3 Slot 2



### 3 Point Sources



# A Summary

## A.1 Status

V&V Scientist	Joy Nichols
V&V Date (YYYY-MM-DD)	2009.12.01
V&V Edition	1
V&V Disposition and Status	OK
V&V Charge Time	15.059

## A.2 Comments

HRC hard PSF calibration.