

V&V Reference Report

L2 ASCDS Version : 7.6.10

Observation 194 - L2 Version 001
Chandra X-Ray Center

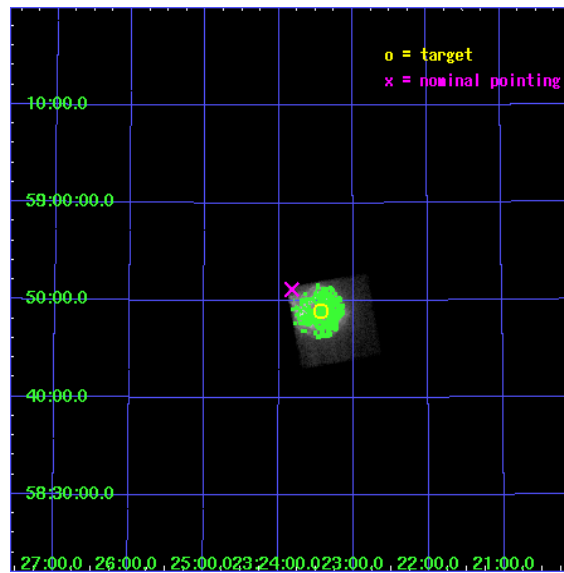
L2 Processing Date : May 19 2007

Contents

1	Front	2
2	OBI	3
2.1	OBI	3
2.1.1	Images	3
2.1.2	Bias	3
2.1.3	Parameters	4
2.1.4	Events	4
2.2	Compared Parameters	5
2.3	Aspect	6
2.4	Star Slots	9
2.4.1	Slot 3	9
2.4.2	Slot 4	10
2.4.3	Slot 5	11
2.4.4	Slot 6	12
2.4.5	Slot 7	13
2.5	FID Slots	14
2.5.1	Slot 0	14
2.5.2	Slot 1	15
2.5.3	Slot 2	16
3	Point Sources	17
A	Summary	18
A.1	Status	18
A.2	Comments	18

1 Front

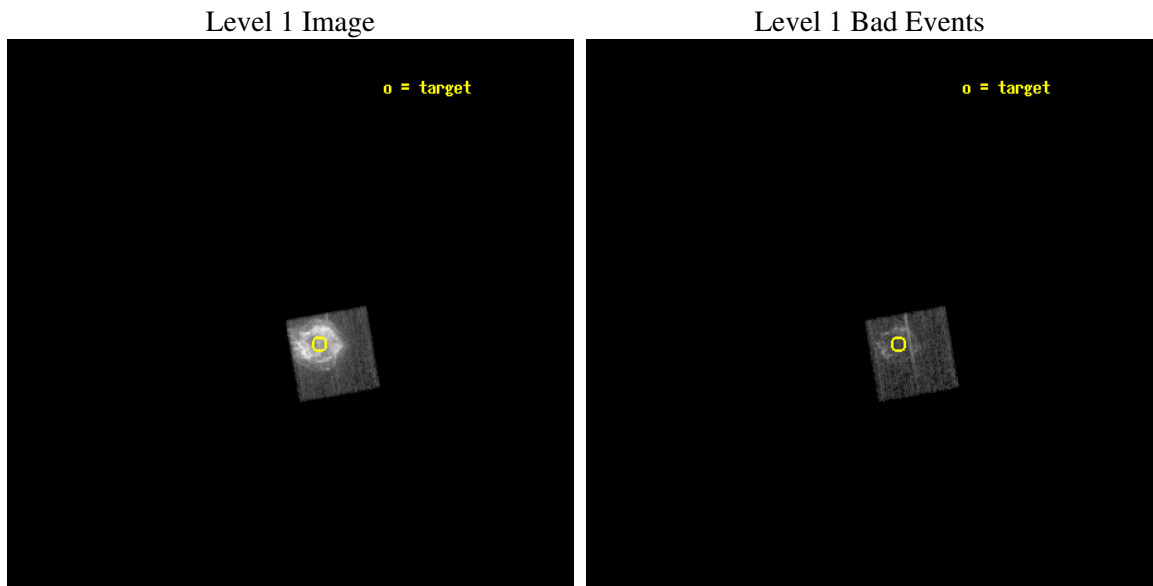
seq_num	590062
obs_id	194
title	ACIS CHIP RESPONSE TO CAS A, JUL. 99
observer	Dr. CXC Calibration
object	CAS A [Chip I3, T=120, Offsets=-2,2,0]
dtcycle	0
cycle	P
ra_targ	350.8575
dec_targ	58.814833
ra_nom	350.95598101999
dec_nom	58.852757000128
roll_nom	80.130372804465
revision	3
ontime	3422.80245848
livetime	3379.4608727865
ontime0	5036.8000046909
ontime1	5036.8000046909
ontime2	5036.8000046909
ontime3	3422.80245848
ontime6	5036.8000046909
ontime7	5036.8000046909
l2events	763492



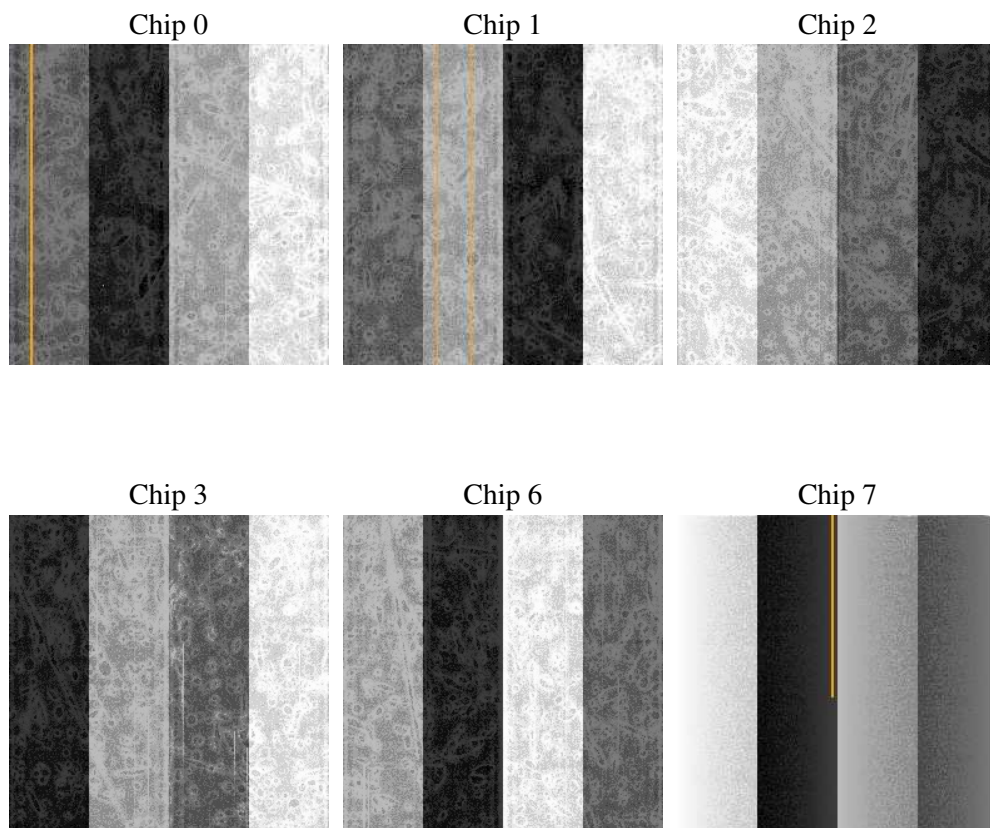
2 OBI

2.1 OBI

2.1.1 Images



2.1.2 Bias



2.1.3 Parameters

obi_num	1
ascdsver	7.6.10
caldsver	3.3.0
date	2007-05-19T10:10:11
revision	3

sched_exp_time	5222.570000
ontime	3422.80245848
ontime0	5036.8000046909
ontime1	5036.8000046909
ontime2	5036.8000046909
ontime3	3422.80245848
ontime6	5036.8000046909
ontime7	5036.8000046909
l1events	917976

2.1.4 Events

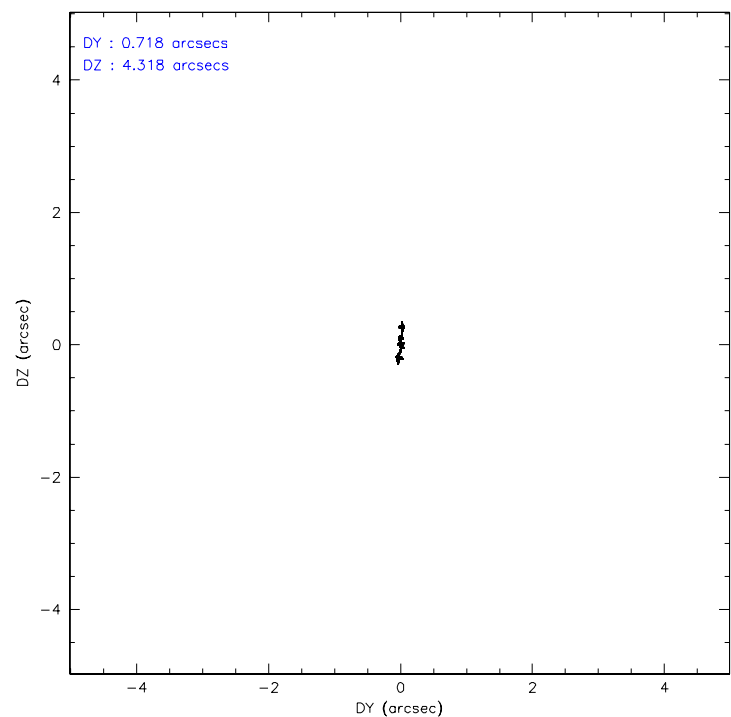
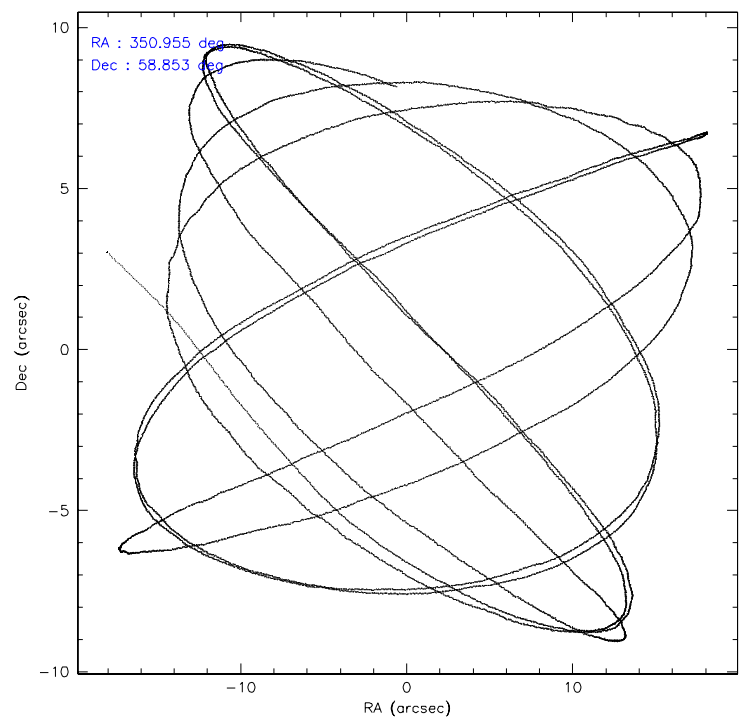
	ccd 0	ccd 1	ccd 2	ccd 3	ccd 6	ccd 7
level 1 events	0	0	0	917976	0	0
rejected events	0	0	0	129590	0	0
rejected %	0%	0%	0%	14%	0%	0%

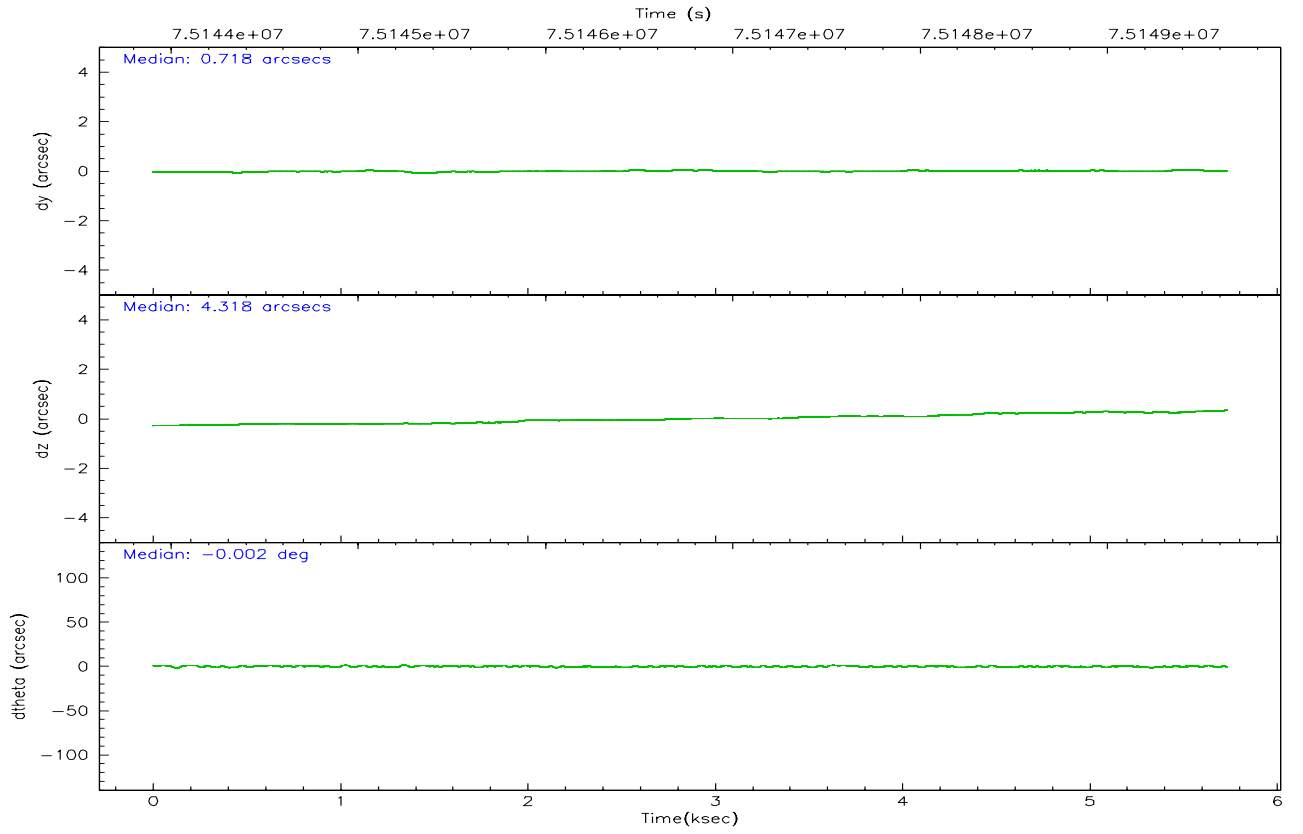
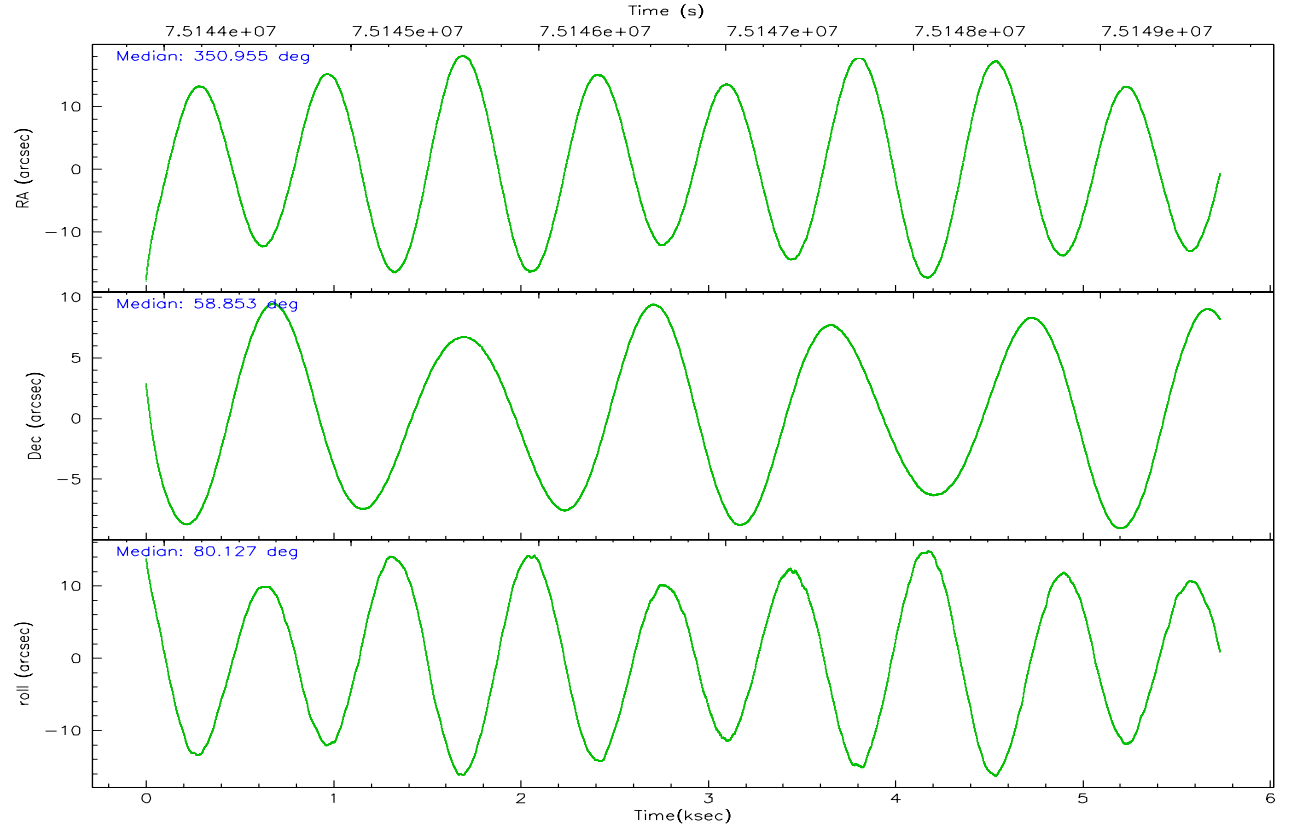
	ccd 0	ccd 1	ccd 2	ccd 3	ccd 6	ccd 7
grade 0 events	0	0	0	638470	0	0
	0%	0%	0%	69%	0%	0%
grade 1 events	0	0	0	10901	0	0
	0%	0%	0%	1%	0%	0%
grade 2 events	0	0	0	82599	0	0
	0%	0%	0%	8%	0%	0%
grade 3 events	0	0	0	25197	0	0
	0%	0%	0%	2%	0%	0%
grade 4 events	0	0	0	25416	0	0
	0%	0%	0%	2%	0%	0%
grade 5 events	0	0	0	6846	0	0
	0%	0%	0%	0%	0%	0%
grade 6 events	0	0	0	17423	0	0
	0%	0%	0%	1%	0%	0%
grade 7 events	0	0	0	111124	0	0
	0%	0%	0%	12%	0%	0%

2.2 Compared Parameters

Parameter	Planned	Actual	Parameter	Planned	Actual
Instrument	ACIS	ACIS	Obspar format version number	6	6
Detector	ACIS-012367	ACIS-012367	Obspar file type	PREDICTED	ACTUAL
Grating	NONE	NONE	Obspar update status	NONE	UPDATED
Data mode	FAINT	FAINT	Number of optional ACIS chips dropped	0	0
Observation mode	POINTING	POINTING	On-chip summing requested	N	N
Pointing RA	350.974067	350.9559810199912	Subarray requested	NONE	NONE
Pointing Dec	58.826830	58.85275700012816	Alternating exposures requested	N	N
Pointing Roll	79.906220	80.13037280446514	Primary exposure time	3.200000	3.2
SIM focus pos (mm)	-0.782348	-0.7809083437167272			
SIM defocus (mm)	0	0.001439871863259334			
SIM translation stage pos (mm)	-233.592463	-233.5874344608287			
SIM translation stage offset (mm)	0	-0.005018542100998502			
Observation start time	75144419.184000	75143296.30522899			
Observation start date	2000-05-19T17:25:55	2000-05-19T17:08:16			
Observation end time	75149641.184000	75149951.117973			
Observation end date	2000-05-19T18:52:57	2000-05-19T18:59:11			
Read mode	TIMED	TIMED			

2.3 Aspect



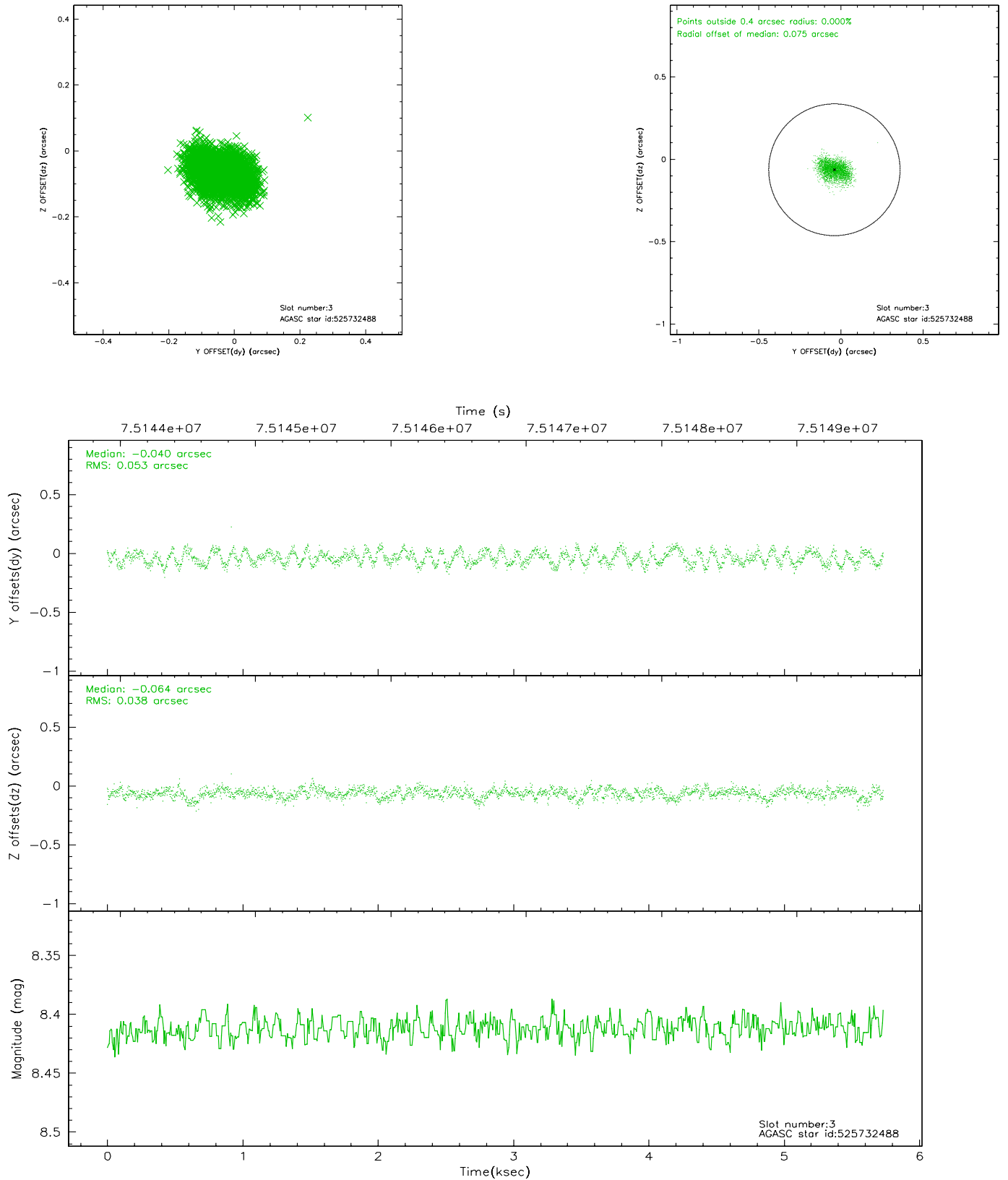


Slot Statistics

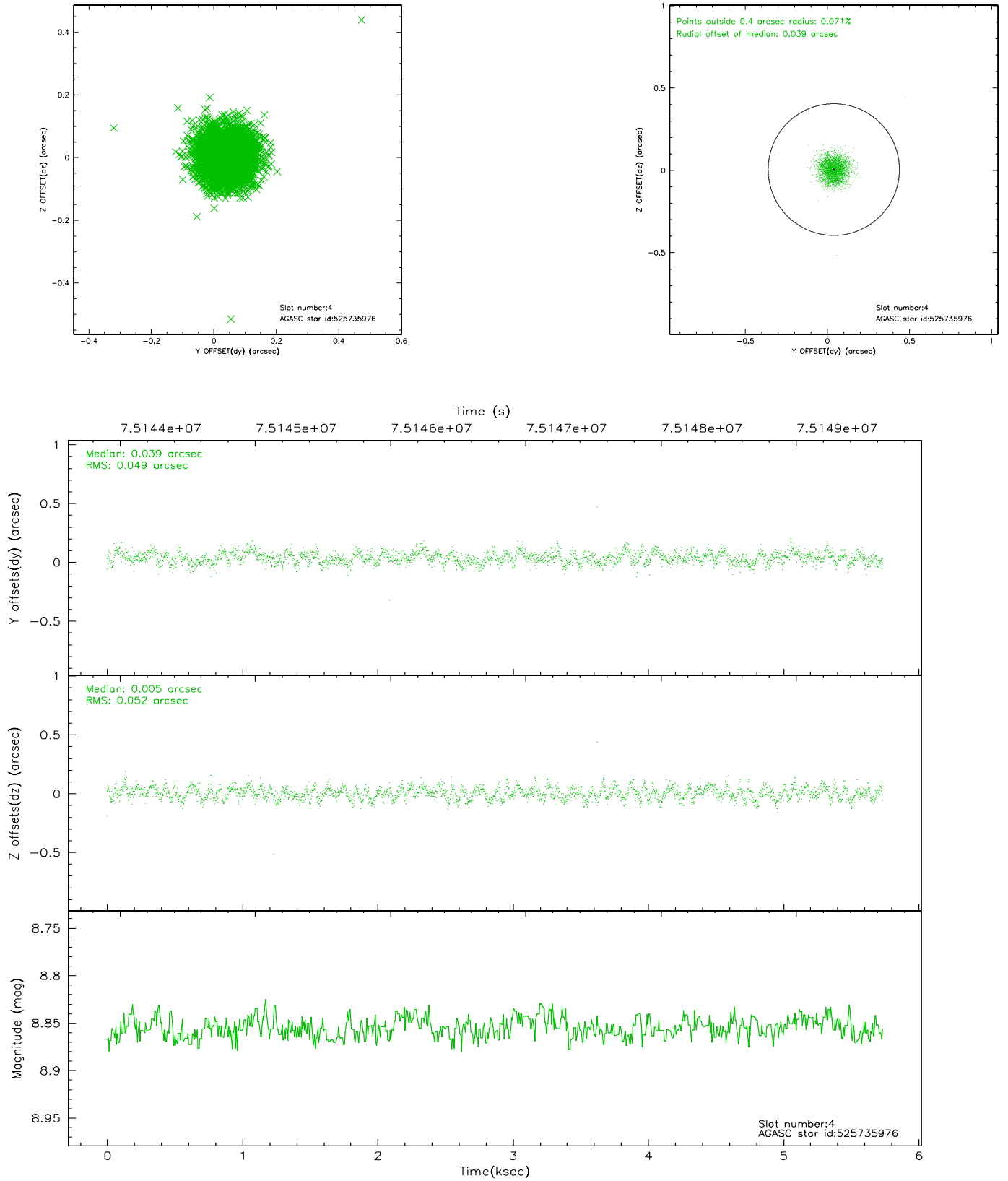
slot	status	id	mag	n_pts	med_dy	med_dz	dr1	dr2	ra	dec	mean_y	mean_z
0	FID	ACIS-I-2	7.15	1399	-0.019	-0.001	0.009	0.016	0.000000	0.000000	-755.05	-834.01
1	FID	ACIS-I-4	7.19	1398	-0.069	0.021	0.007	0.012	0.000000	0.000000	2158.49	1071.66
2	FID	ACIS-I-5	7.23	1399	-0.012	0.049	0.009	0.016	0.000000	0.000000	-1807.53	1070.73
3	GUIDE	525732488	8.41	2796	-0.040	-0.064	0.070	0.110	350.087090	58.516915	-1379.55	1446.98
4	GUIDE	525735976	8.86	2799	0.039	0.005	0.075	0.119	350.142956	58.277622	-2212.81	1203.42
5	GUIDE	525736400	9.06	2799	0.010	-0.138	0.061	0.099	350.974563	59.175145	1234.32	218.23
6	GUIDE	525732528	9.36	2799	-0.036	0.110	0.095	0.148	351.607241	59.298932	1883.56	-847.64
7	GUIDE	525734296	9.50	2795	0.026	0.083	0.085	0.142	351.276372	58.418153	-1346.12	-820.10

2.4 Star Slots

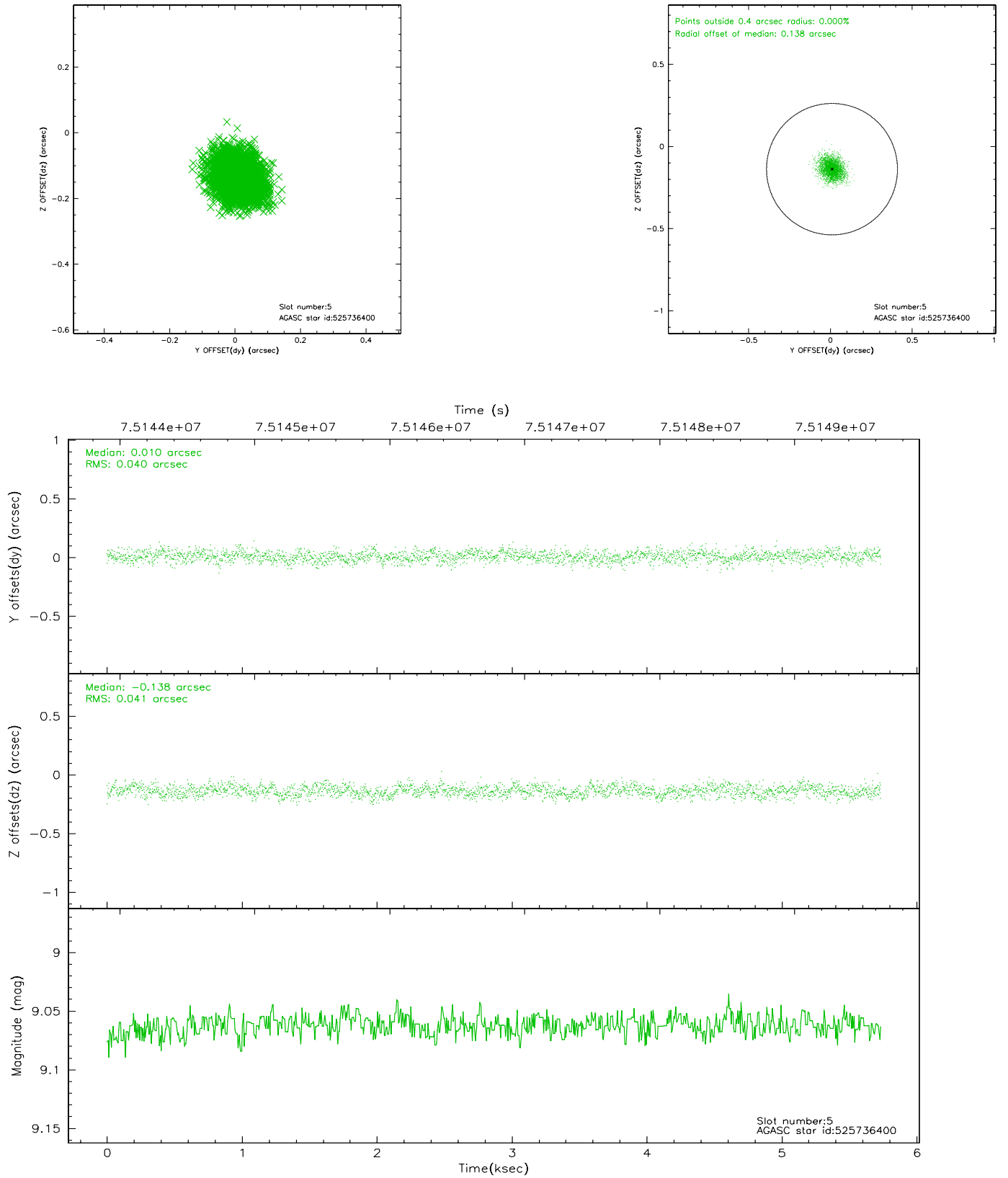
2.4.1 Slot 3



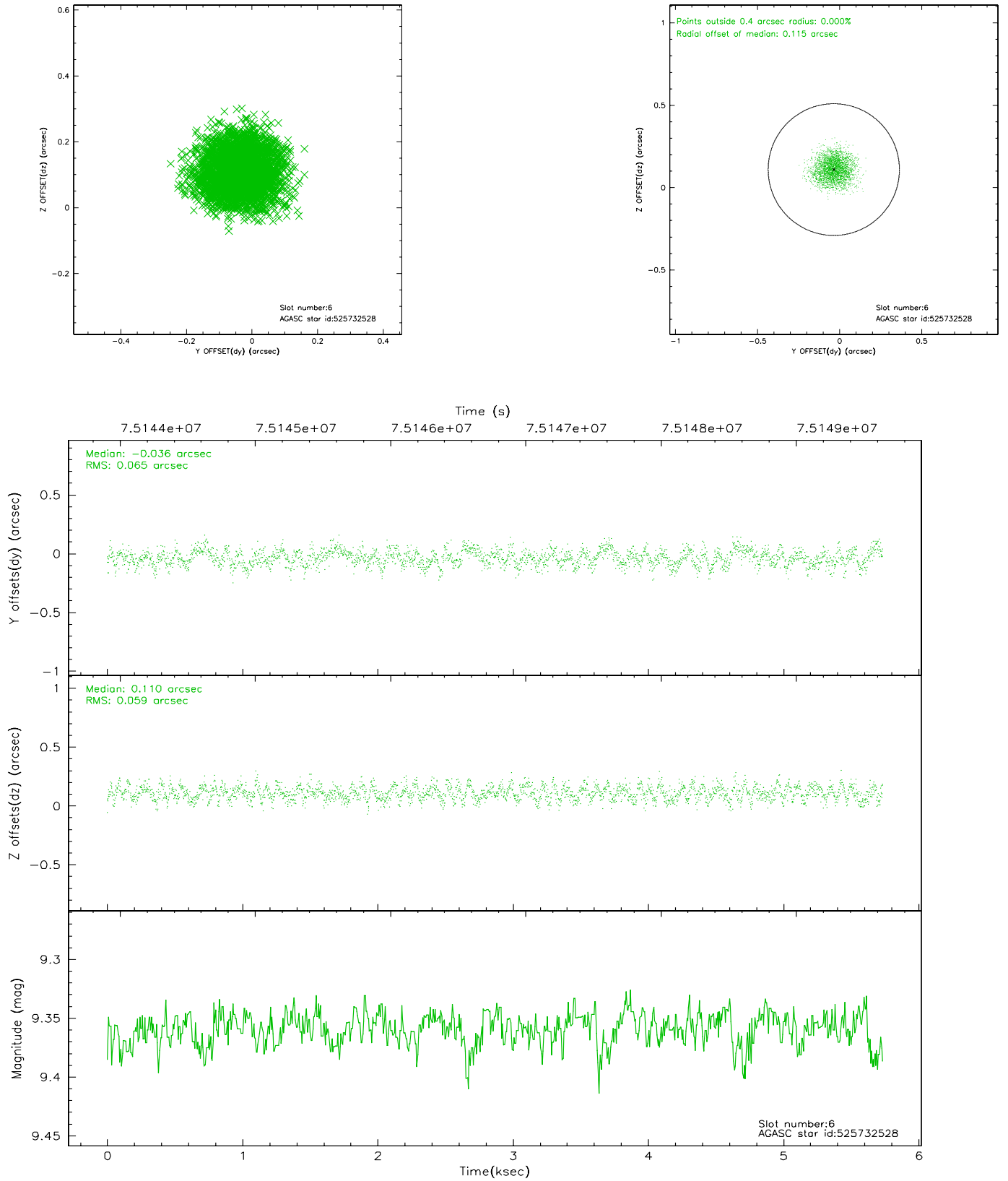
2.4.2 Slot 4



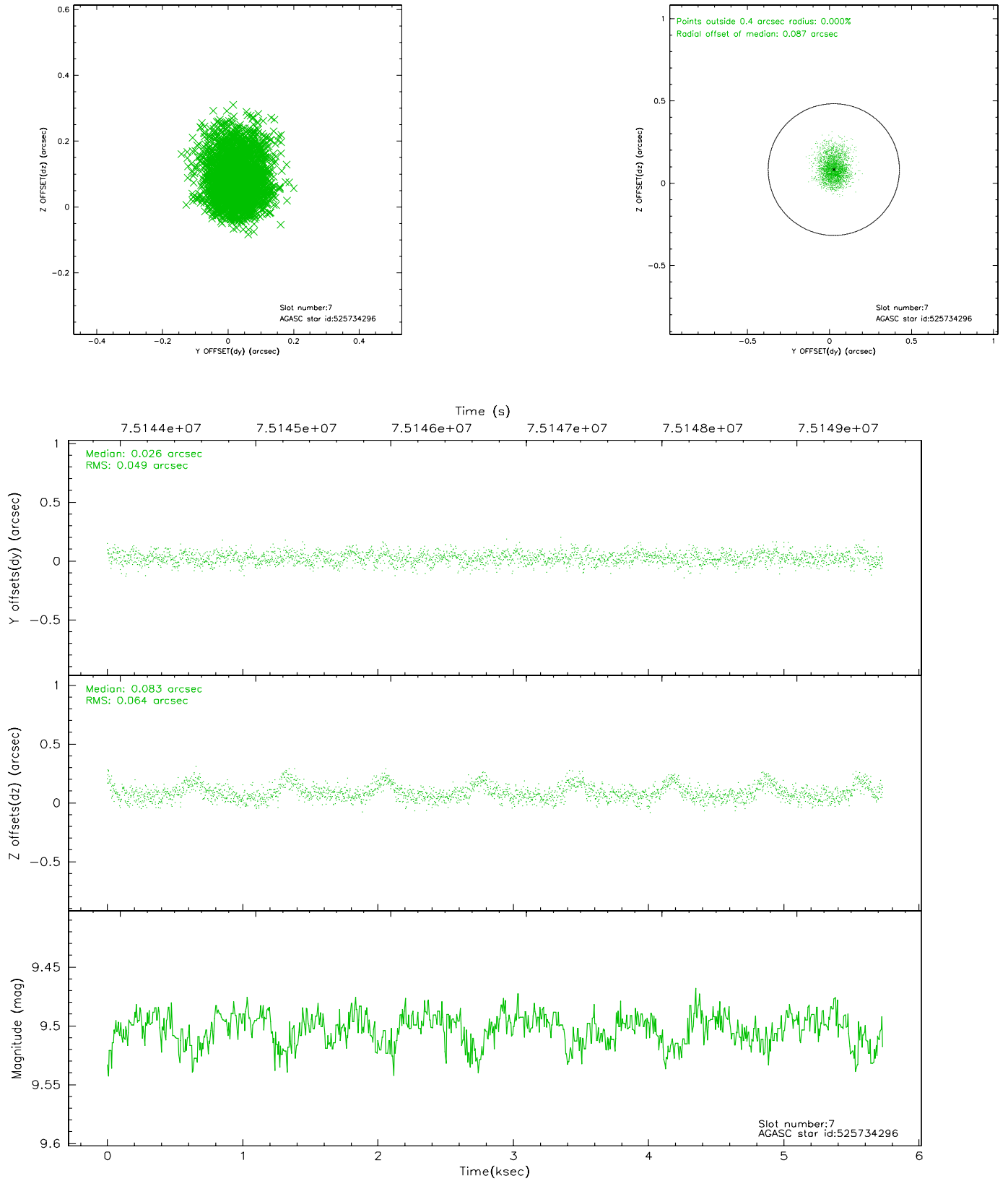
2.4.3 Slot 5



2.4.4 Slot 6

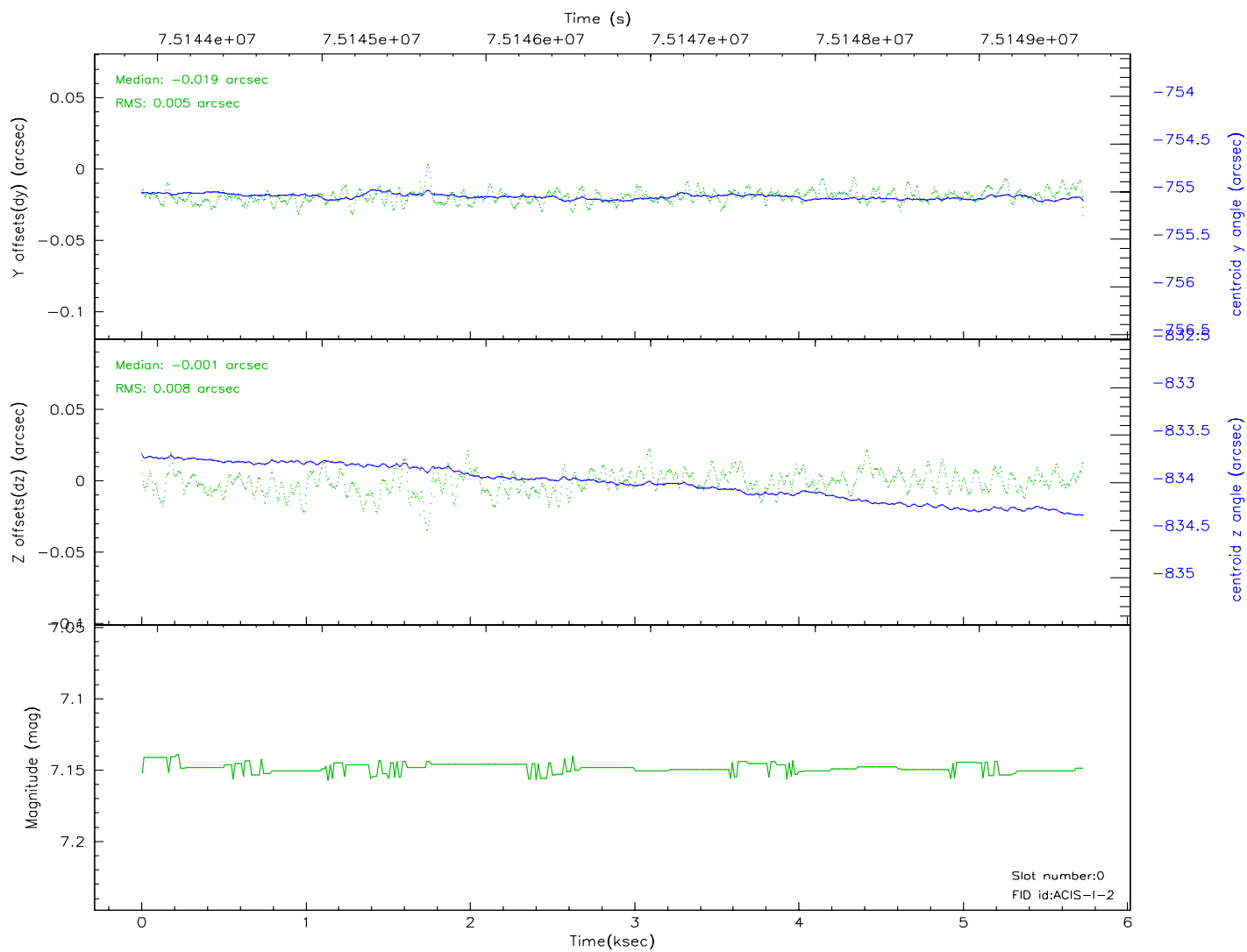
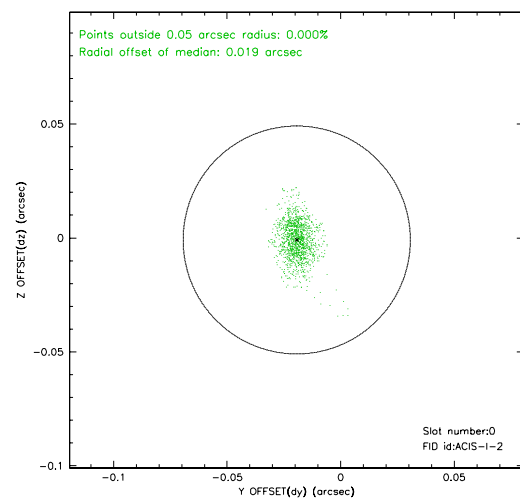
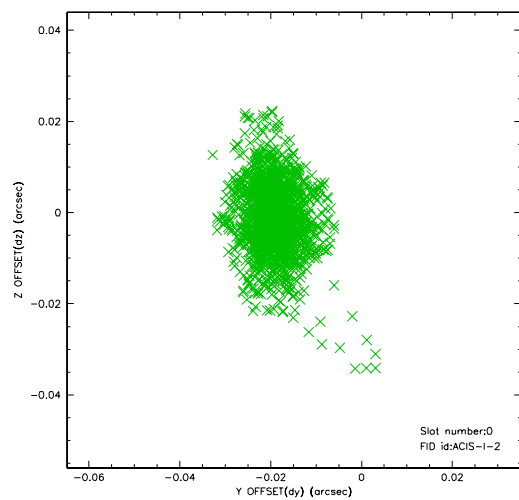


2.4.5 Slot 7

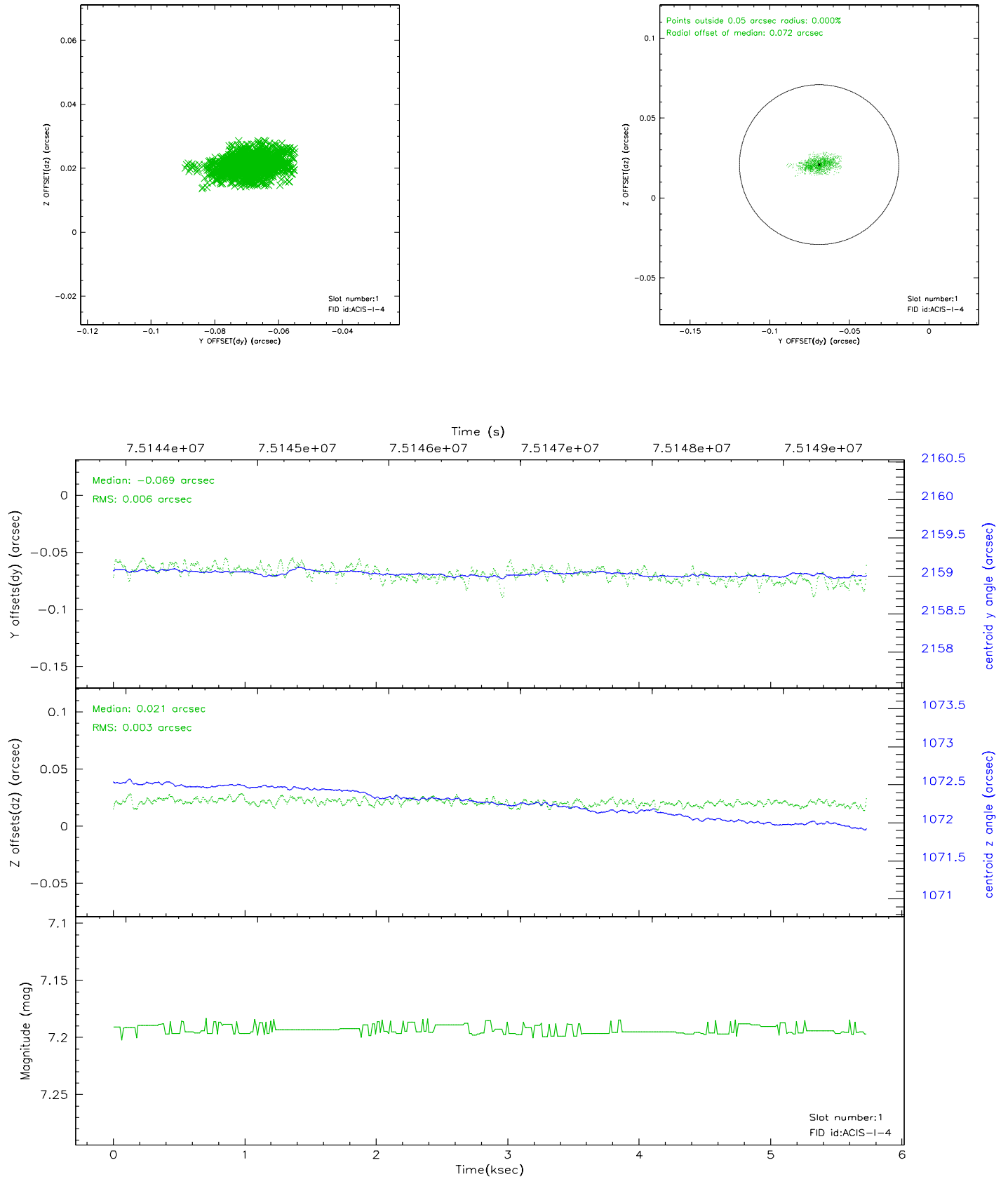


2.5 FID Slots

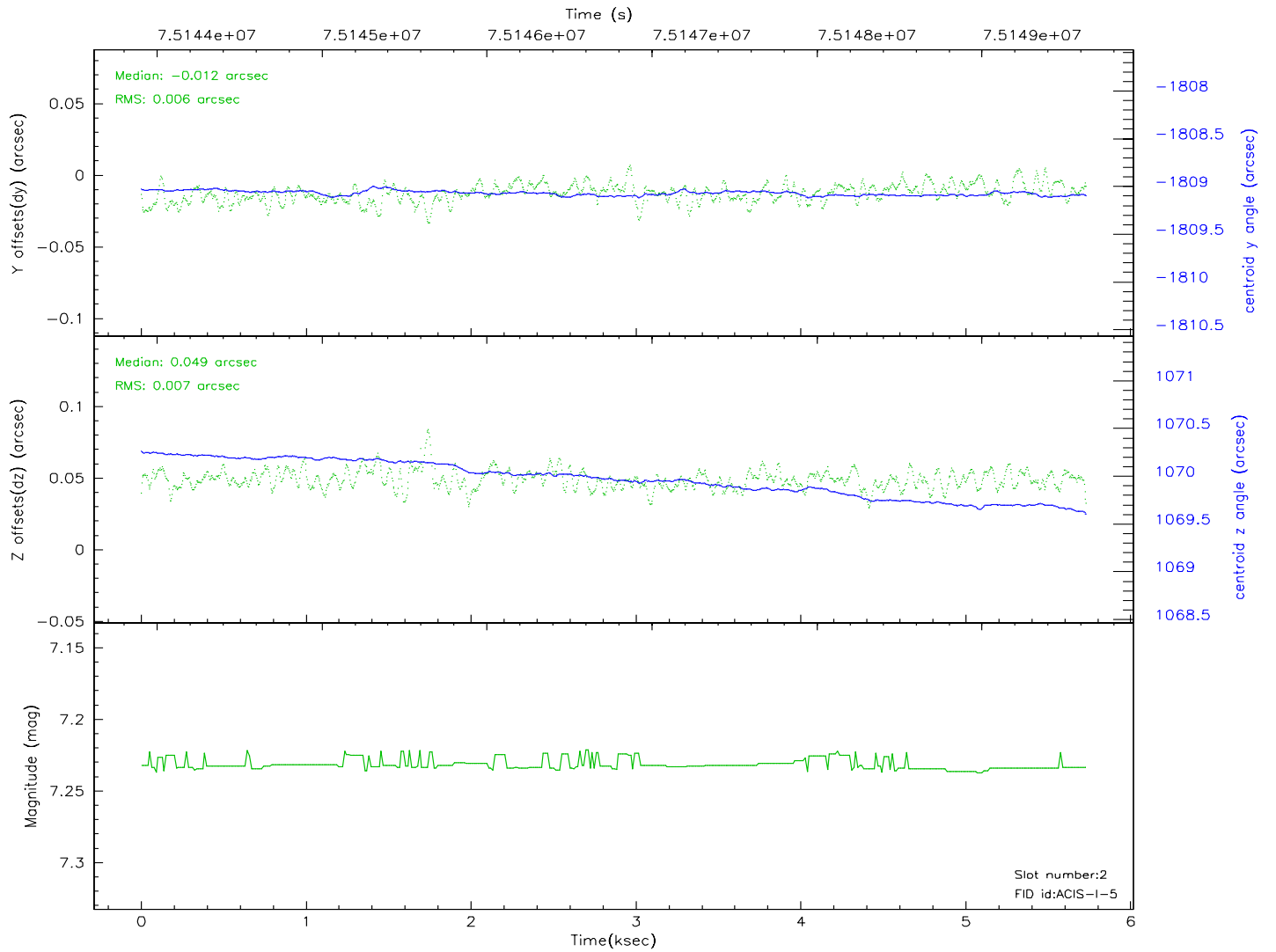
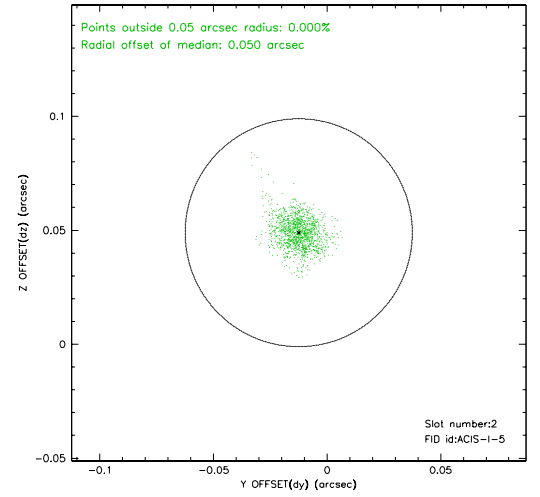
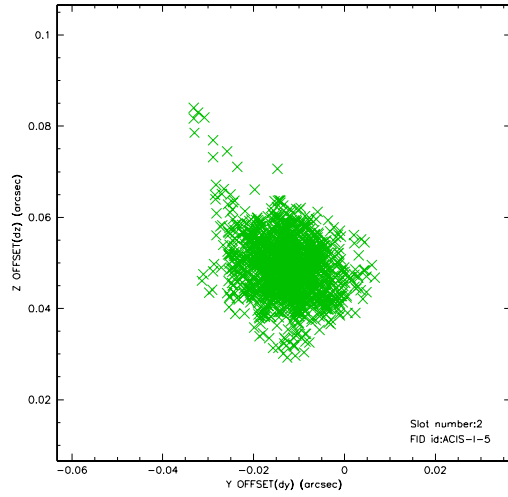
2.5.1 Slot 0



2.5.2 Slot 1



2.5.3 Slot 2



3 Point Sources

A Summary

A.1 Status

V&V Scientist	Beth Sundheim
V&V Date (YYYY-MM-DD)	2007.05.20
V&V Edition	1
V&V Disposition and Status	OK
V&V Charge Time	3.443

A.2 Comments