

V&V Reference Report

L2 ASCDS Version : 7.6.10

Observation 1736 - L2 Version 6
Chandra X-Ray Center

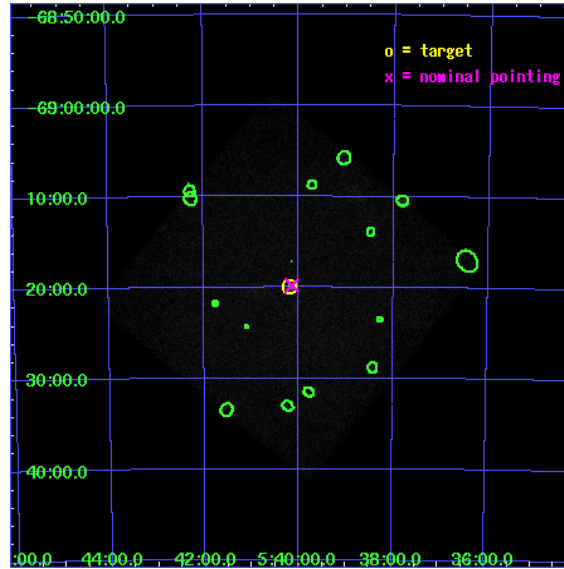
L2 Processing Date : Nov 19 2007

Contents

1	Front	2
2	OBI	3
2.1	OBI	3
2.1.1	Images	3
2.1.2	Parameters	4
2.1.3	Events	4
2.2	Compared Parameters	5
2.3	Aspect	6
2.4	Star Slots	9
2.4.1	Slot 3	9
2.4.2	Slot 4	10
2.4.3	Slot 5	11
2.4.4	Slot 6	12
2.4.5	Slot 7	13
2.5	FID Slots	14
2.5.1	Slot 0	14
2.5.2	Slot 1	15
2.5.3	Slot 2	16
3	Point Sources	17
A	Summary	18
A.1	Status	18
A.2	Comments	18

1 Front

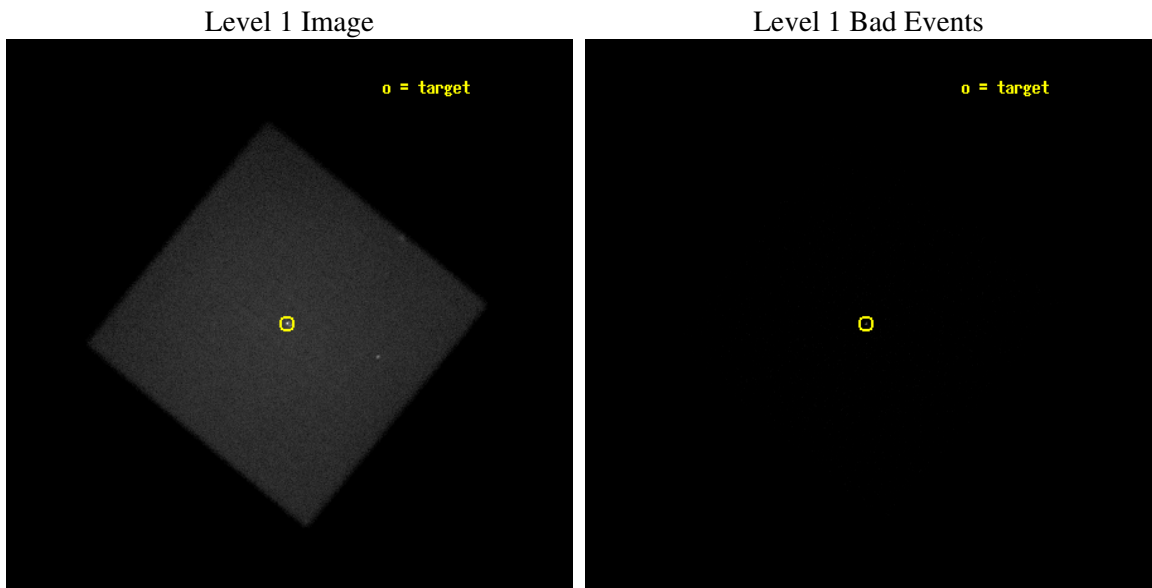
seq_num	590185
obs_id	1736
title	VERIFICATION OF AXAF TIMING CAPABILITY
observer	Dr. CXC Calibration
object	PSR B0540-69
ra_targ	85.04625
dec_targ	-69.332
ra_nom	85.034998439467
dec_nom	-69.329847727519
roll_nom	174.45499517697
revision	6
ontime	10029.881619751
livetime	9951.8347144998
l2events	159311



2 OBI

2.1 OBI

2.1.1 Images



2.1.2 Parameters

obi_num	0
ascdsver	7.6.11.2
caldbver	3.4.1
date	2007-11-20T01:47:39
revision	6

sched_exp_time	9885.000000
ontime	10029.881619751
l1events	1189638

2.1.3 Events

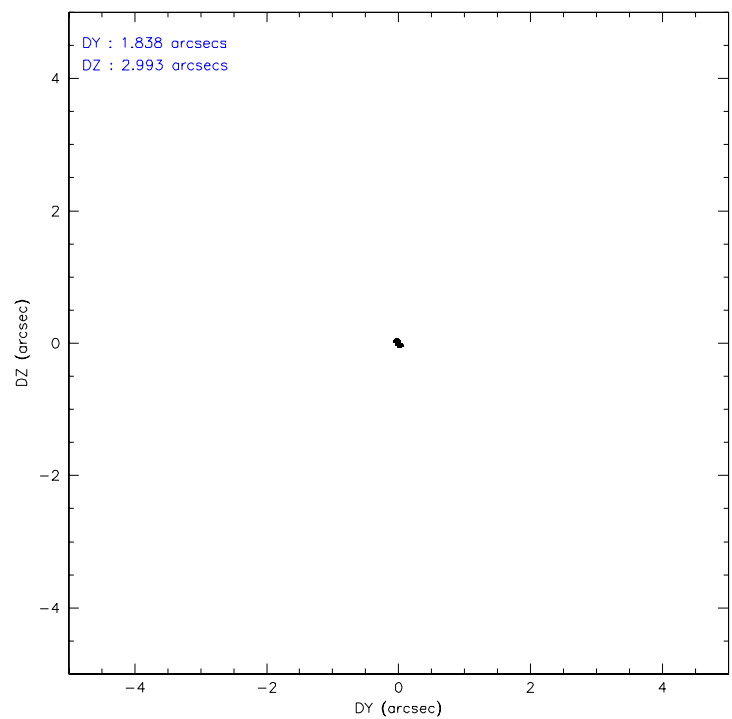
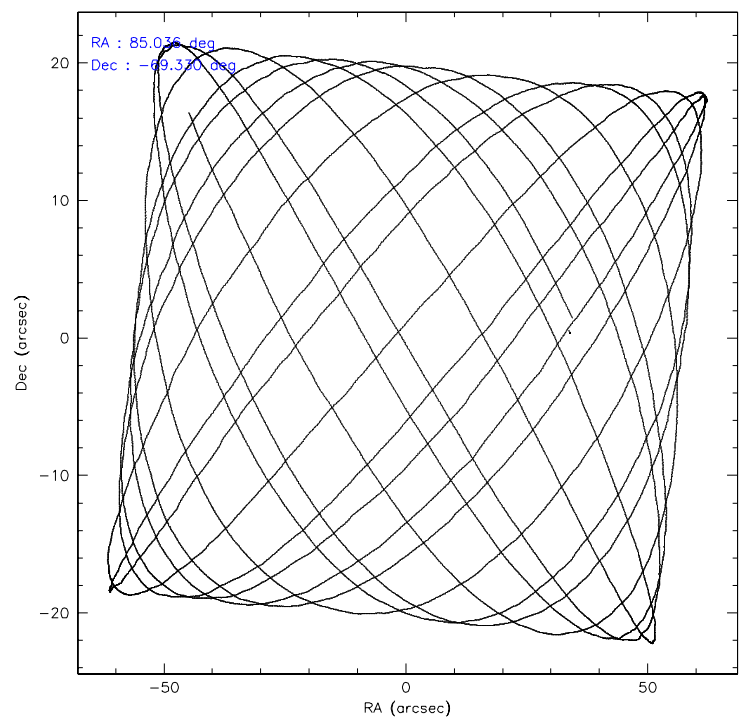
Level 1 Events

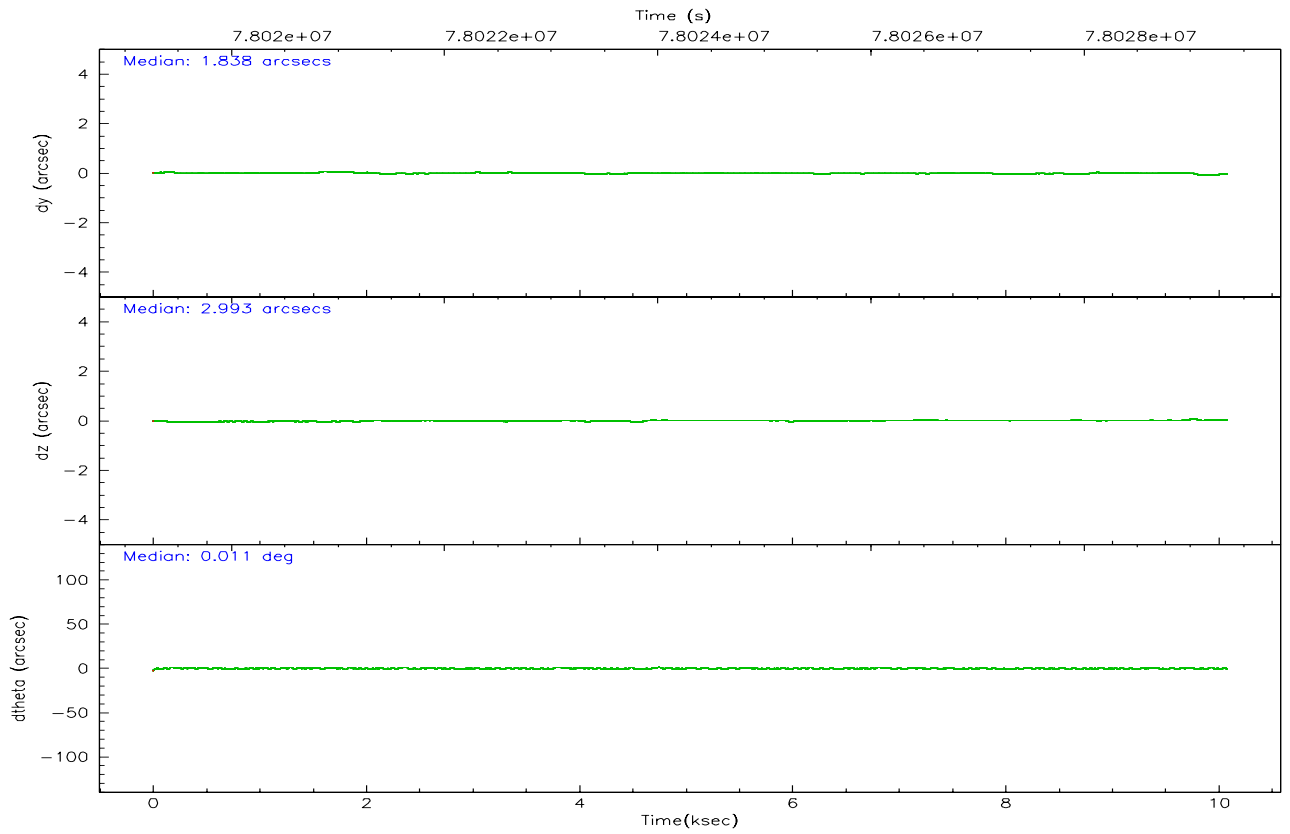
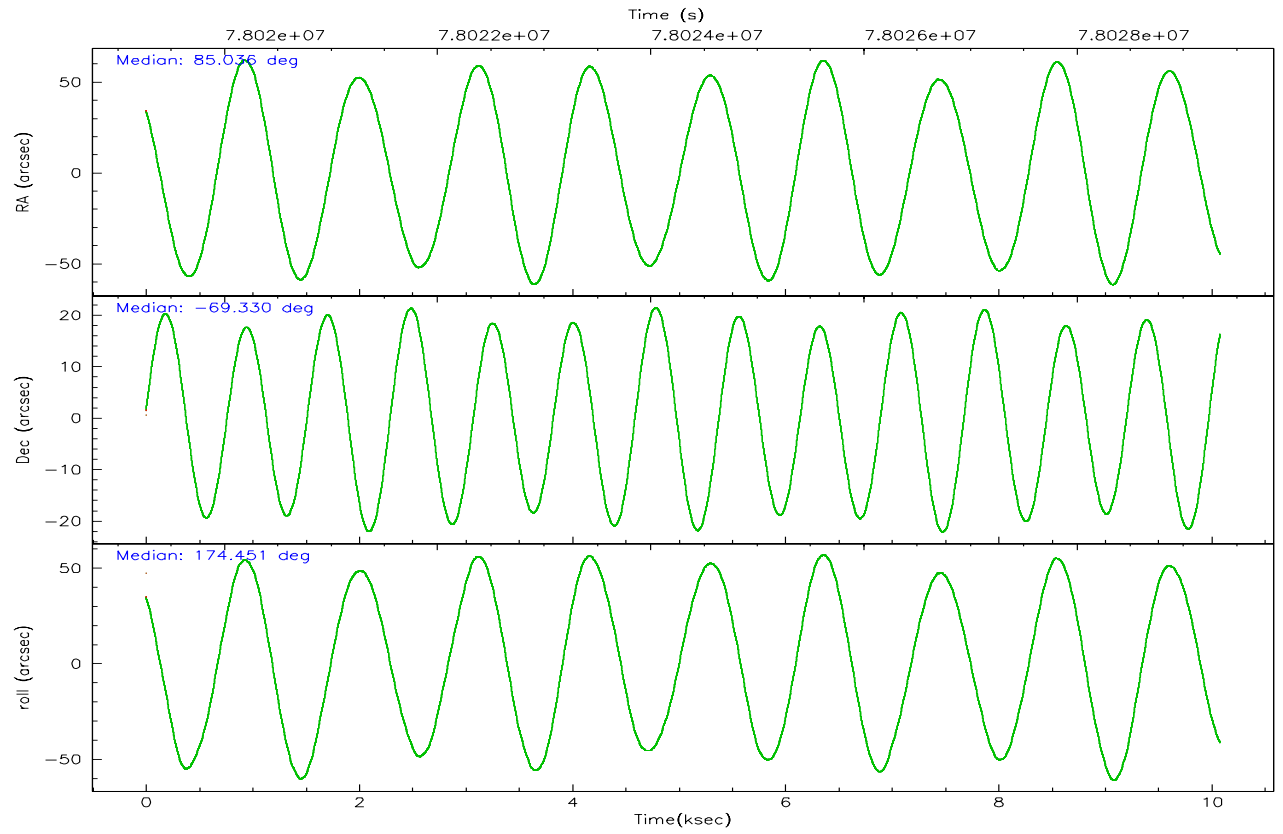
	segment 0
level 1 events	1189638
rejected events	47408
rejected %	3%

2.2 Compared Parameters

Parameter	Planned	Actual	Parameter	Planned	Actual
Instrument	HRC	HRC	Obspar format version number	6	6
Detector	HRC-I	HRC-I	Obspar file type	PREDICTED	ACTUAL
Grating	NONE	NONE	Obspar update status	NONE	UPDATED
Data mode	OBSERVING	OBSERVING			
Observation mode	POINTING	POINTING			
Pointing RA	85.104948	85.0349984394667			
Pointing Dec	-69.318233	-69.32984772751901			
Pointing Roll	174.615931	174.4549951769658			
SIM focus pos (mm)	-1.040293	-1.038866356238299			
SIM defocus (mm)	0	0.001426264420575141			
SIM translation stage pos (mm)	126.985494	126.9829799899862			
SIM translation stage offset (mm)	0	0.002508901615314585			
Observation start time	78019457.184000	78019080.998576			
Observation start date	2000-06-22T00:03:13	2000-06-21T23:58:00			
Observation end time	78029342.184000	78029476.03646			
Observation end date	2000-06-22T02:47:58	2000-06-22T02:51:16			

2.3 Aspect



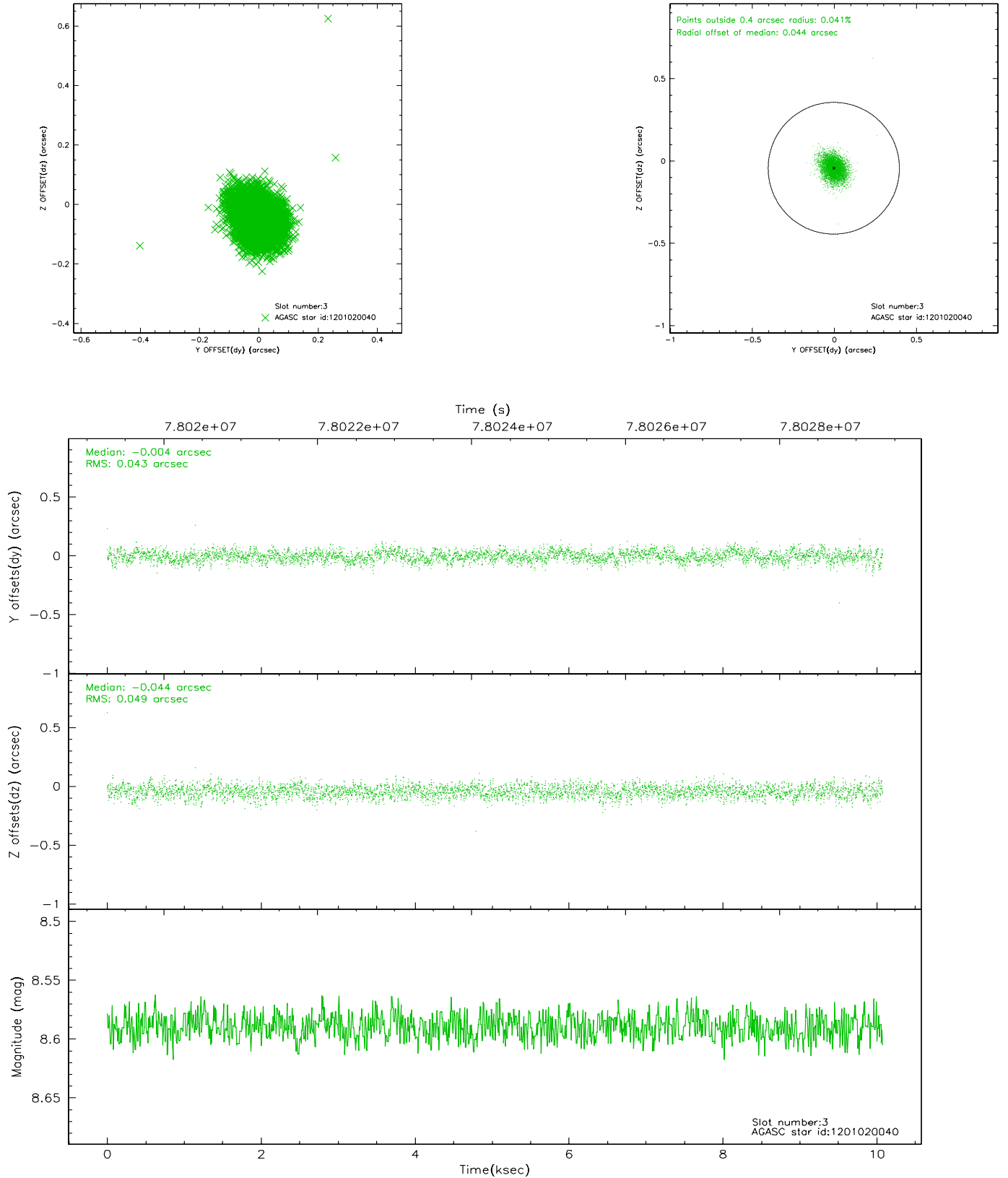


Slot Statistics

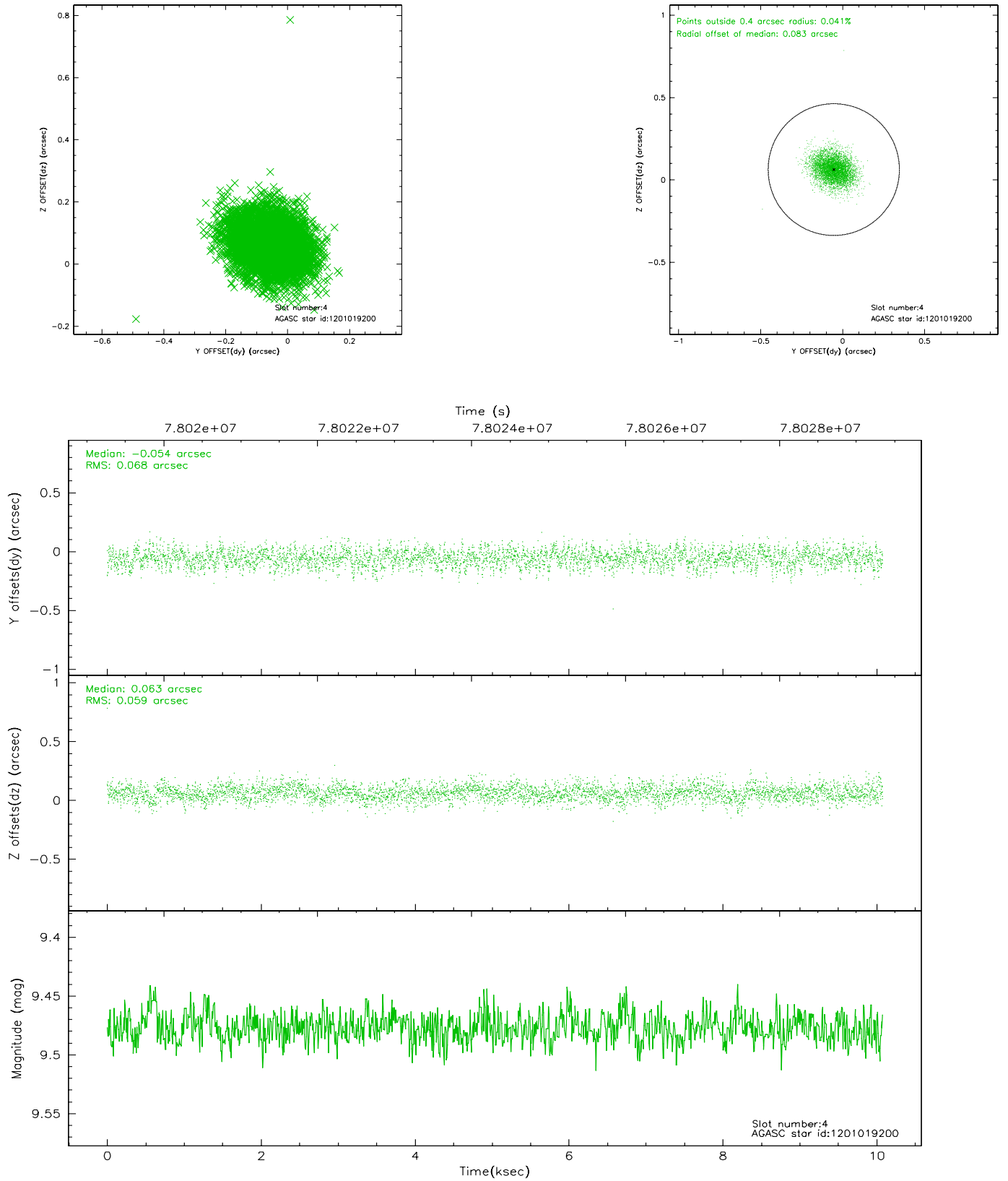
slot	status	id	mag	n_pts	med_dy	med_dz	dr1	dr2	ra	dec	mean_y	mean_z
0	FID	HRC-I-1	6.94	2457	0.067	0.025	0.006	0.010	0.000000	0.000000	-757.27	-1290.67
1	FID	HRC-I-3	7.03	2457	0.029	-0.047	0.007	0.011	0.000000	0.000000	-1186.01	1013.32
2	FID	HRC-I-4	6.98	2457	0.018	-0.068	0.005	0.008	0.000000	0.000000	1285.08	1011.74
3	GUIDE	1201020040	8.59	4912	-0.004	-0.044	0.067	0.110	85.379163	-68.879396	-205.07	-1605.12
4	GUIDE	1201019200	9.48	4908	-0.054	0.063	0.095	0.153	84.213591	-68.777384	1339.21	-1820.89
5	GUIDE	1201406992	9.27	4913	0.060	-0.058	0.083	0.138	83.682859	-69.471866	1734.39	739.93
6	GUIDE	1200885760	9.47	4910	-0.089	0.075	0.098	0.157	83.723637	-68.777667	1973.93	-1747.67
7	GUIDE	1201020088	10.59	4837	0.085	-0.036	0.138	0.224	86.319248	-68.997756	-1451.34	-1280.55

2.4 Star Slots

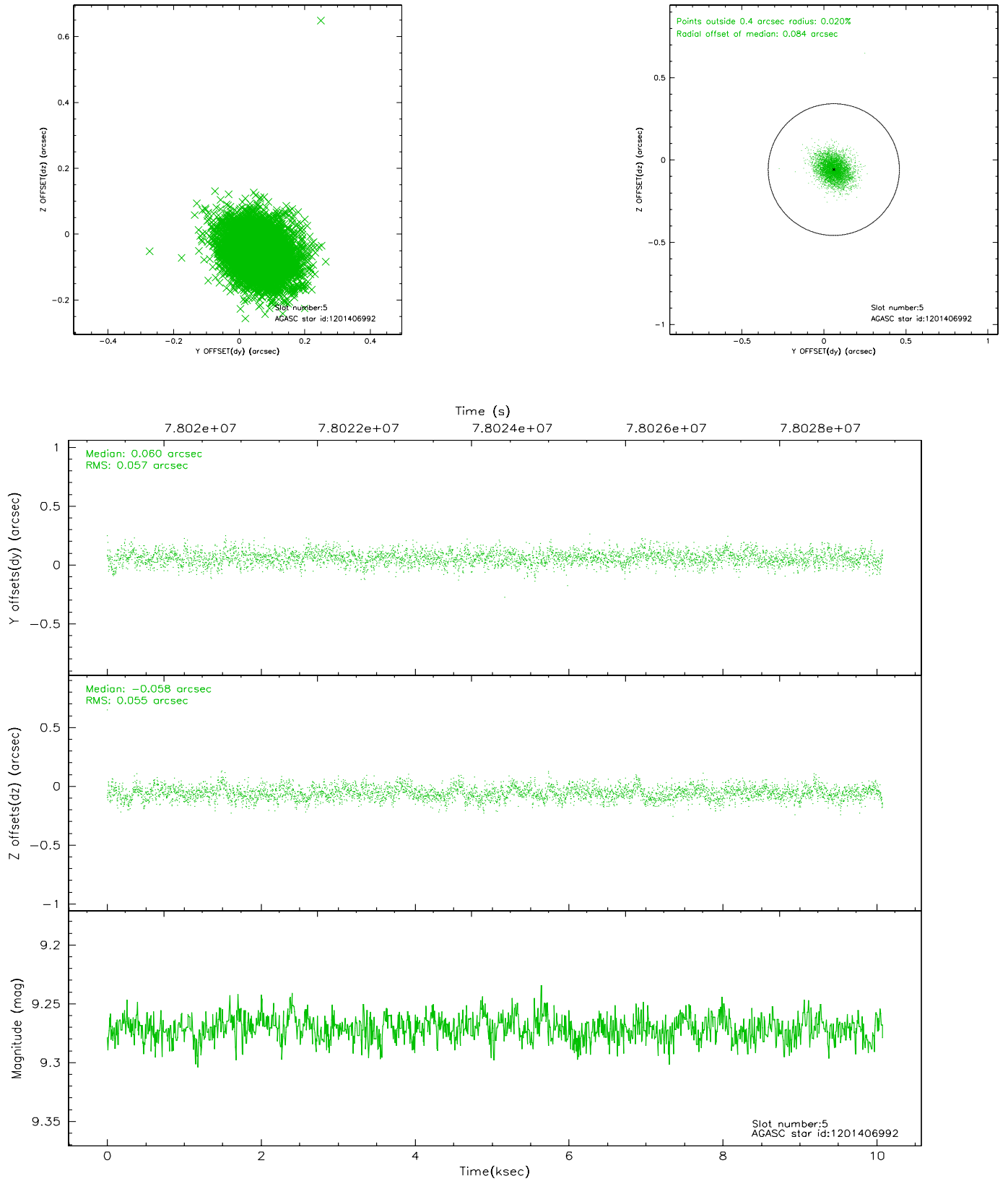
2.4.1 Slot 3



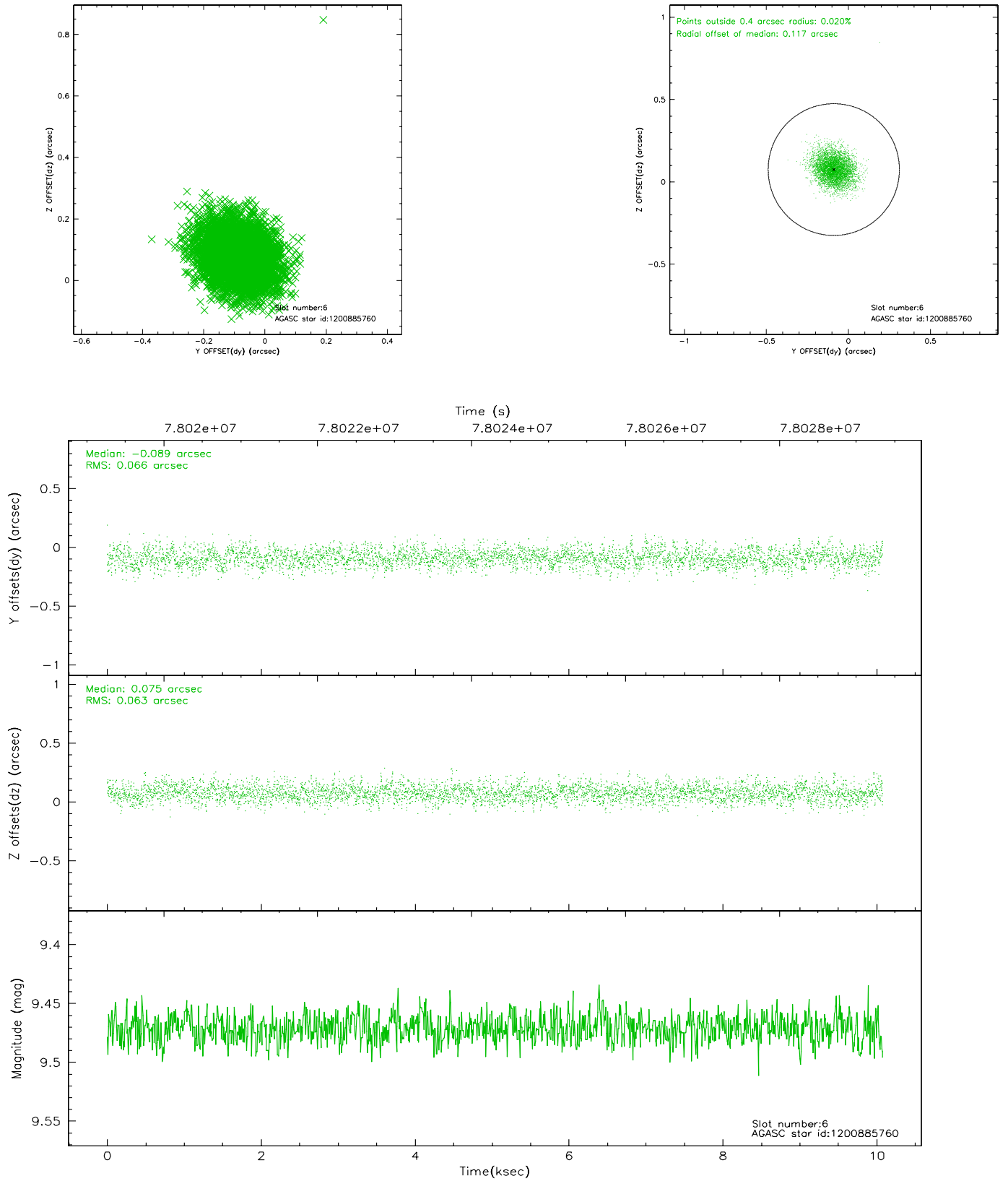
2.4.2 Slot 4



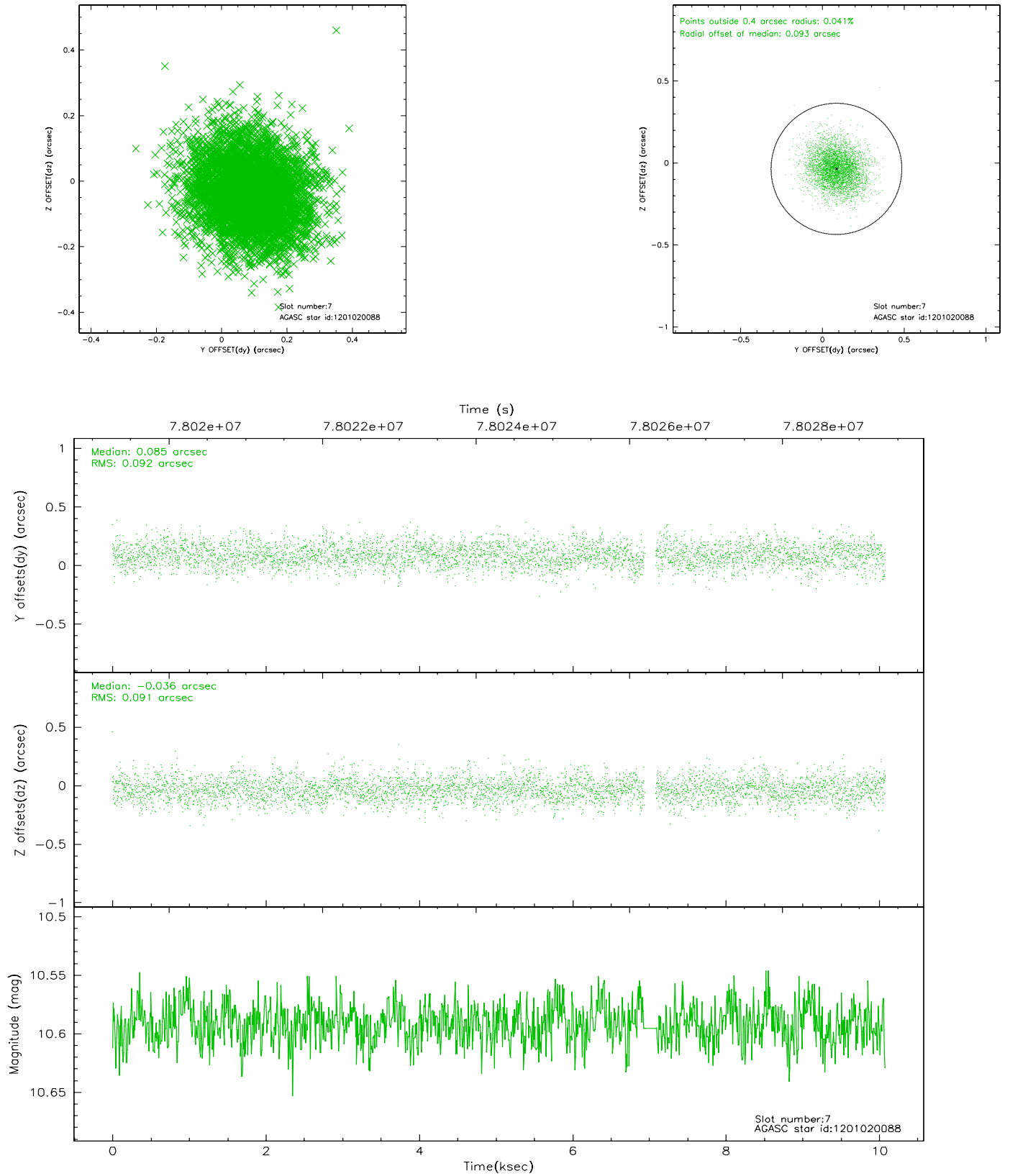
2.4.3 Slot 5



2.4.4 Slot 6

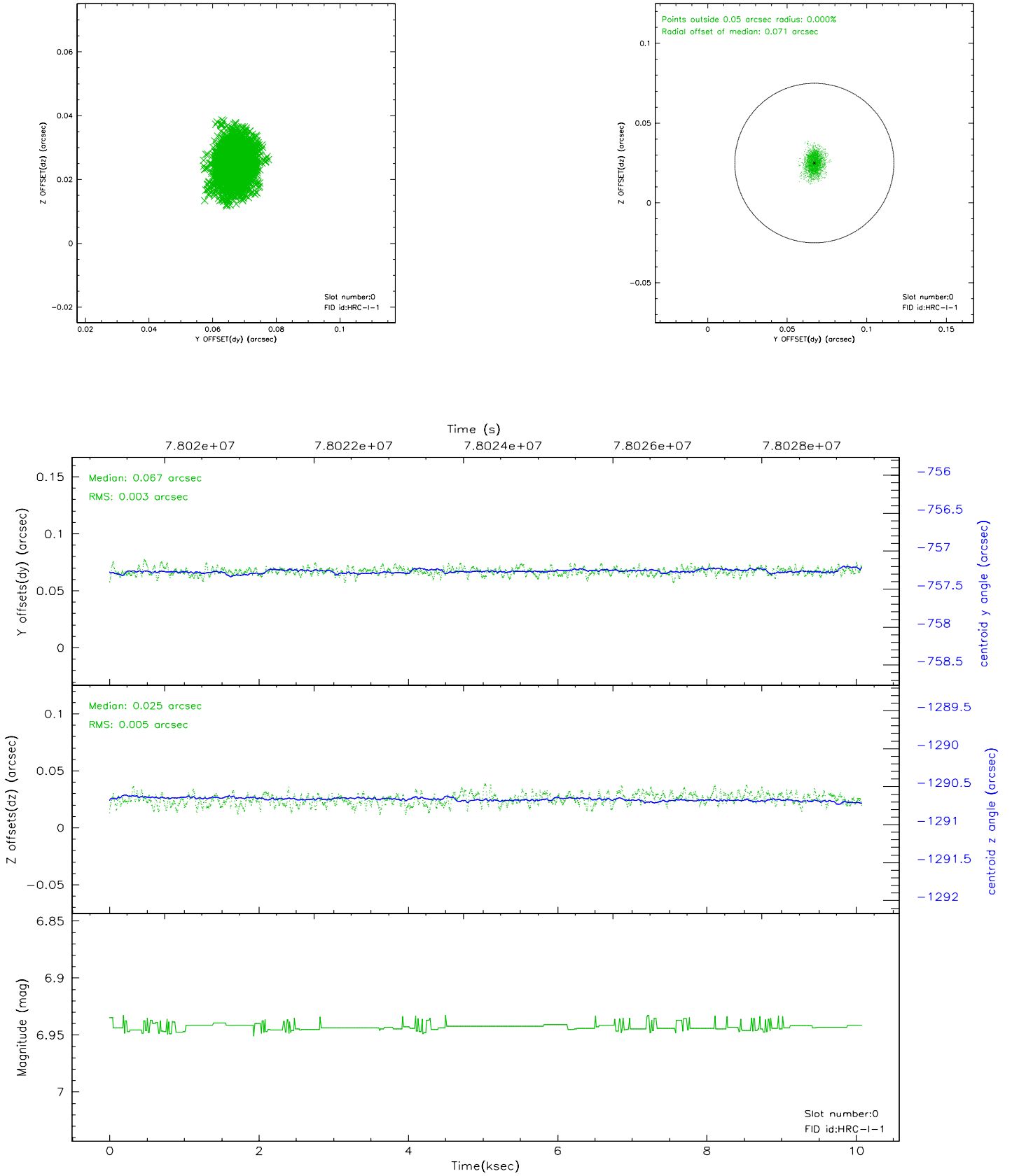


2.4.5 Slot 7

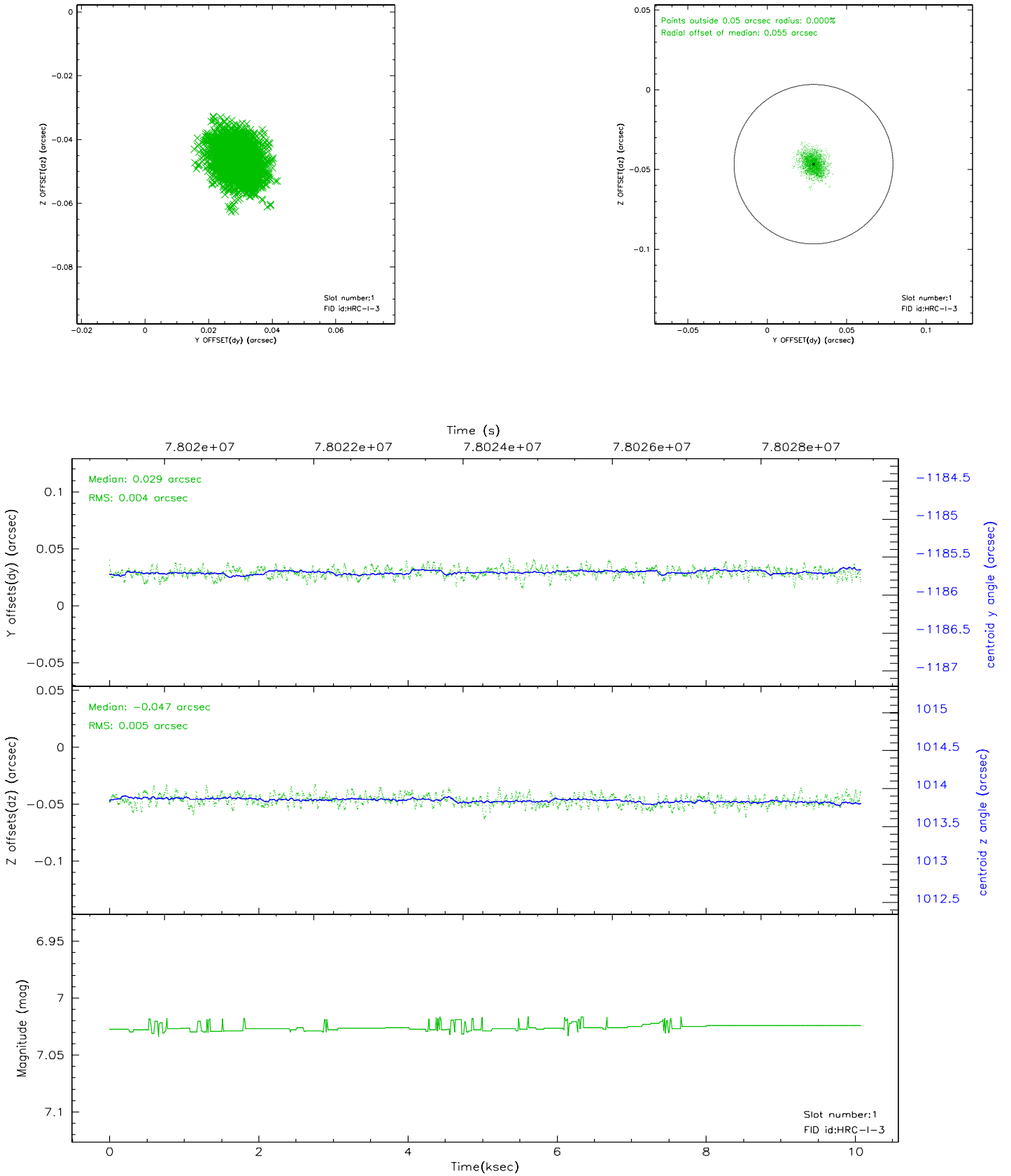


2.5 FID Slots

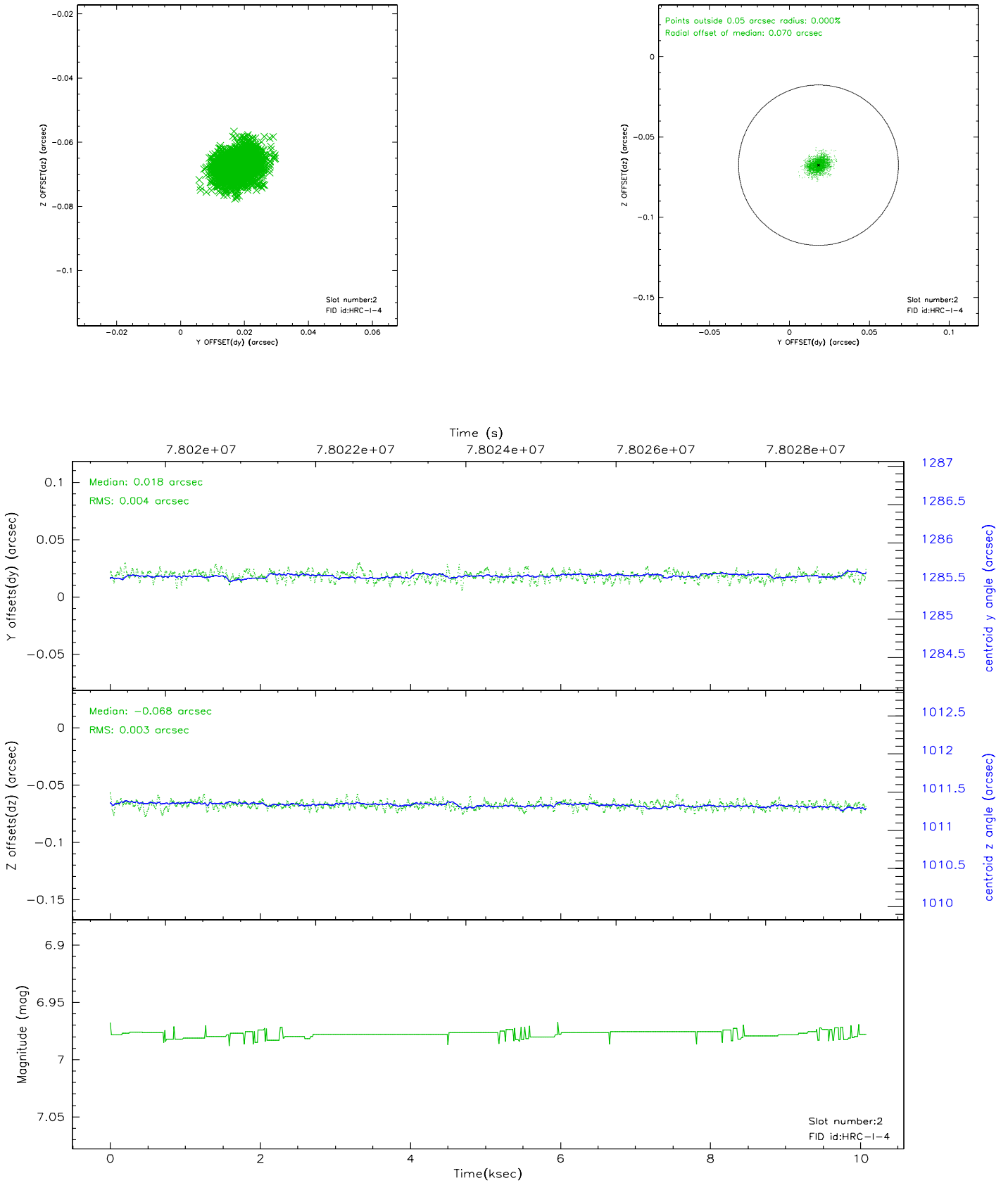
2.5.1 Slot 0



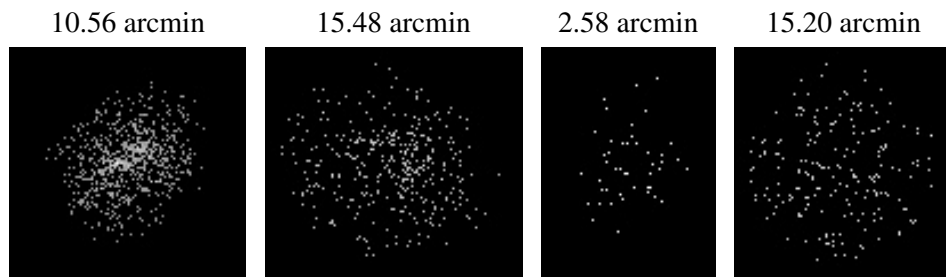
2.5.2 Slot 1



2.5.3 Slot 2



3 Point Sources



A Summary

A.1 Status

V&V Scientist	Beth Sundheim
V&V Date (YYYY-MM-DD)	2007.12.03
V&V Edition	1
V&V Disposition and Status	OK
V&V Charge Time	10.036

A.2 Comments

The current observation has been reprocessed as part of Repro III ('C' supplement) the purpose of which is to update all HRC-I ObsIDs since Jan 2000 to the latest calibrations available for that configuration. Specifically, we are updating the DEGAP solution and the Gain Maps applied. For more information see the Repro IIIC web page at:

<http://asc.harvard.edu/cda/repro3.html#IIIC>

and the associated links.